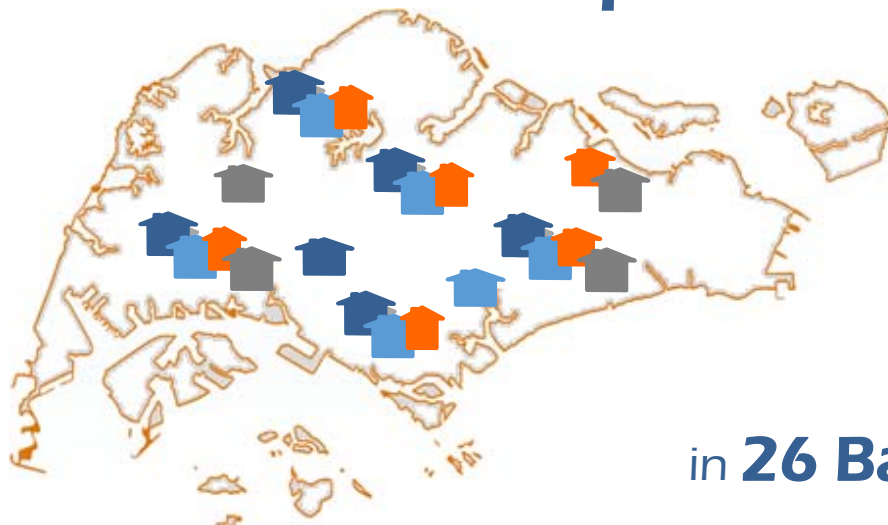


Infographics: Highlights of Household Expenditure Survey 2012/13



Covered **11,050 Dwellings**

in **26 Batches**



Over the course of **1 year**

Oct 2012









Sep 2013



Selected households were surveyed over **2 weeks**

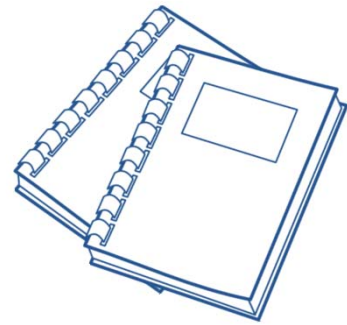
How it compares with other countries...

Singapore's HES of 11,050 dwellings is a relatively large representative sample of the households

	Singapore	Australia	Canada	Japan	United Kingdom	United States
						
Population * (Million) 	5.2	22.3	34.3	127.8	63.3	311.6
Sample in Latest HES (Number of Households) 	11,050	9,800	17,600	57,000	11,500	7,000

* Refers to 2011 data.

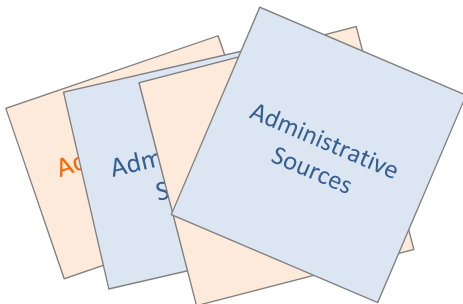
Data were collected via...



Expenditure
Diary Recording
by respondents

Supplemented with...

Administrative Sources

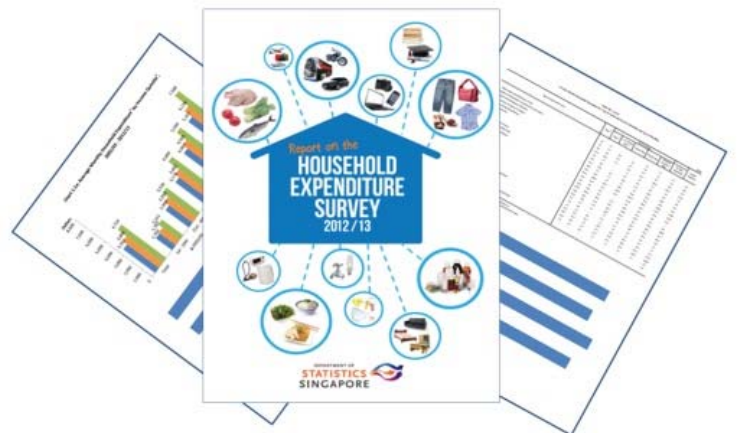


to **Improve Data Quality**
and
Reduce Response Burden

and

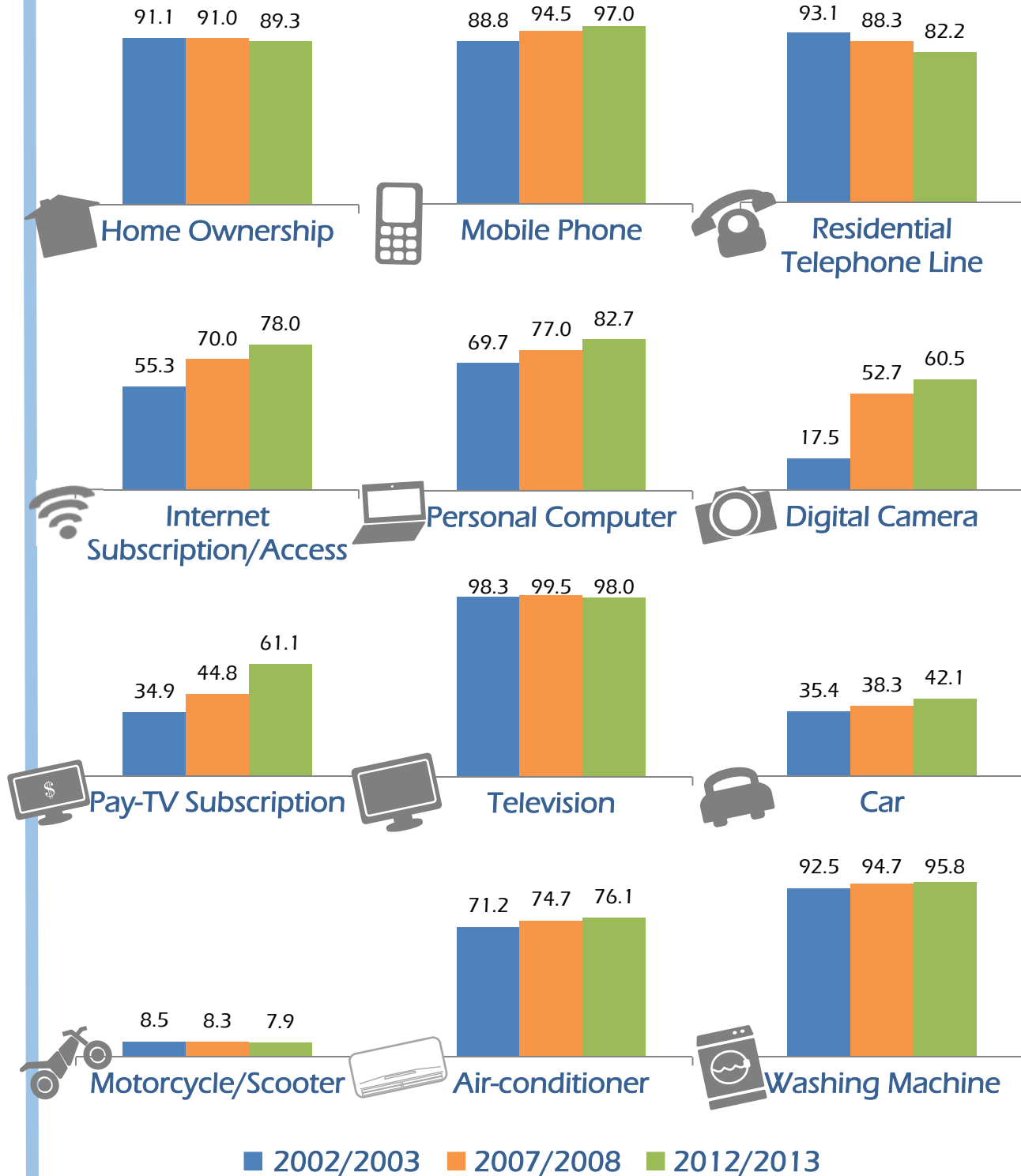


HES 2012/13
Report

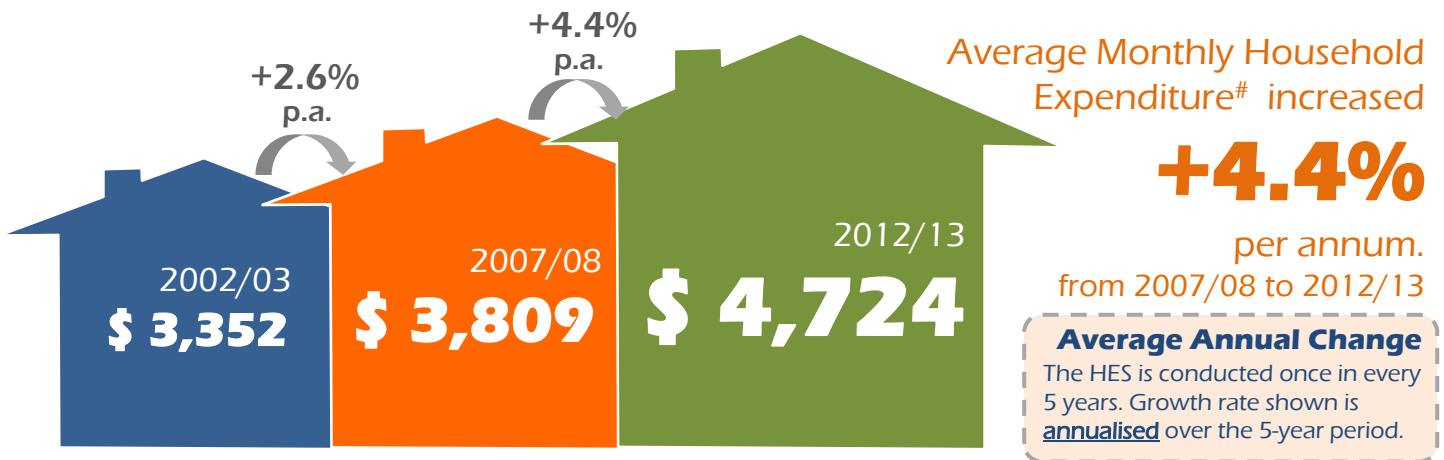


OWNERSHIP of Consumer Durables

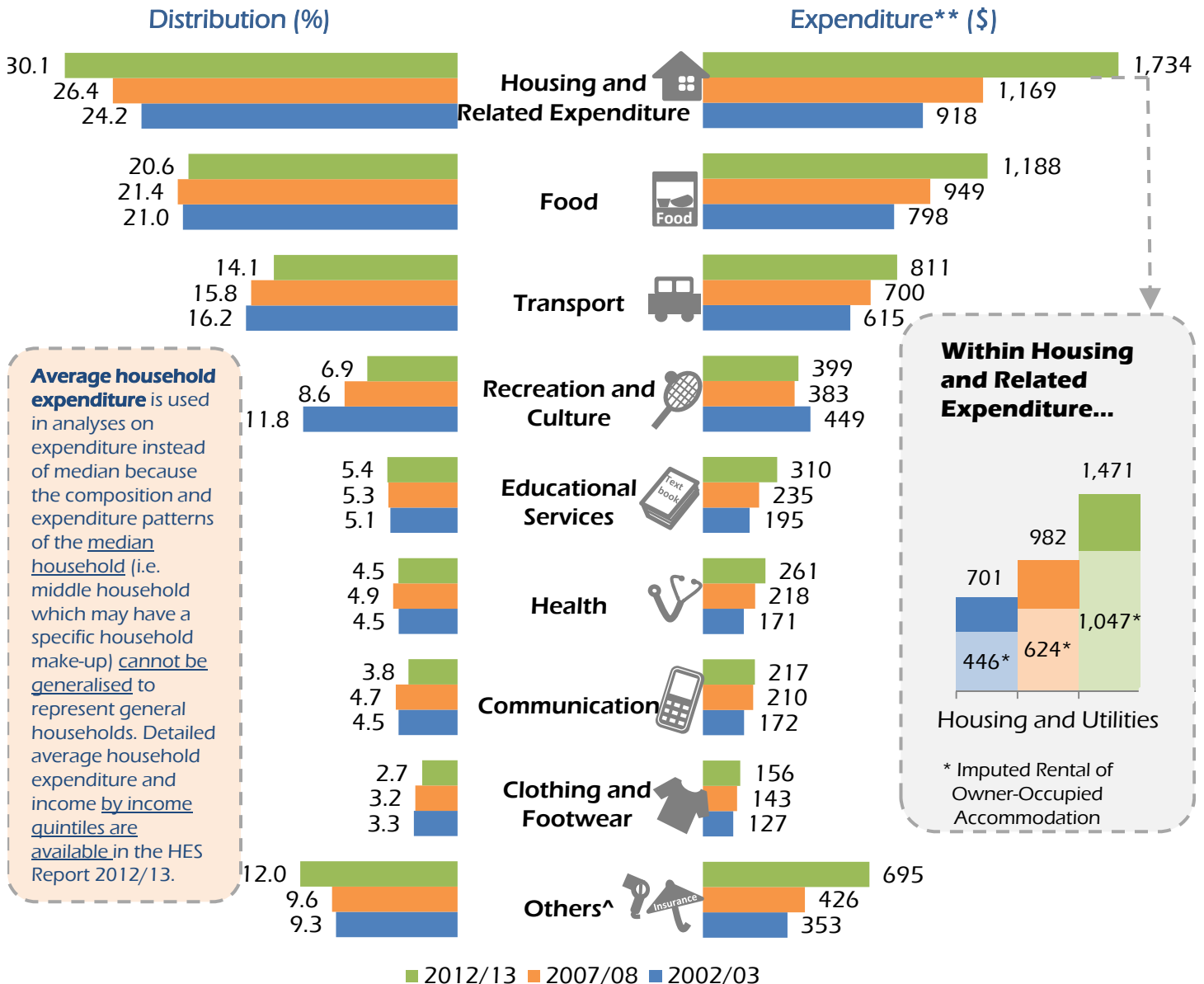
Per Cent



HOUSEHOLD EXPENDITURE



Expenditure excludes imputed rental of owner-occupied accommodation. As it is neither a cash outlay nor income, imputed rent is included only when analysing the detailed share of household expenditure by goods and services.

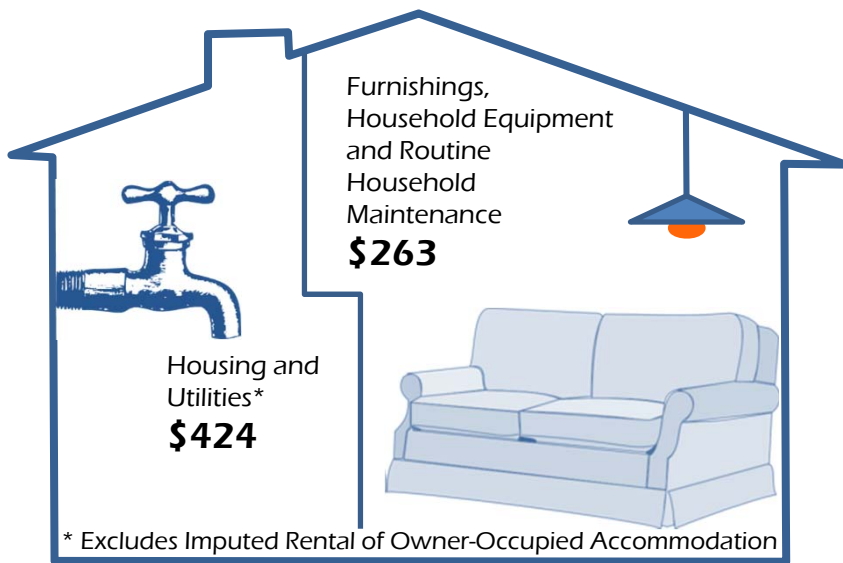


** Expenditure includes imputed rental of owner-occupied accommodation.

^ Others include expenditure on miscellaneous goods and services, including personal care services such as hairdressing, social support services and insurance, and expenditure on alcoholic beverages and tobacco and accommodation services.

Key **2012/13** Average Monthly Household Expenditure on...

Housing and Related Expenditure



Recreation and Culture

Package Tours and Holiday Expenses

\$154



Recreational and Cultural Services

\$138



Educational Services

University Education

\$105

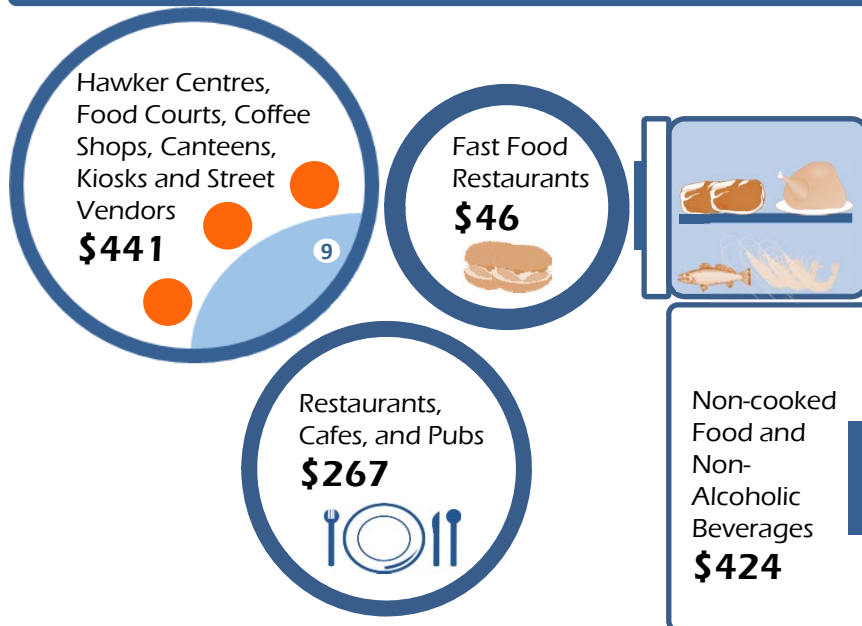


Private Tuition and Other Educational Courses

\$106



Food



Health

Outpatient Services

\$117



Medical Products, Appliances and Equipment

\$78



Communication

Telephone and Telefax Services

\$205



Clothing and Footwear

Clothing

\$122

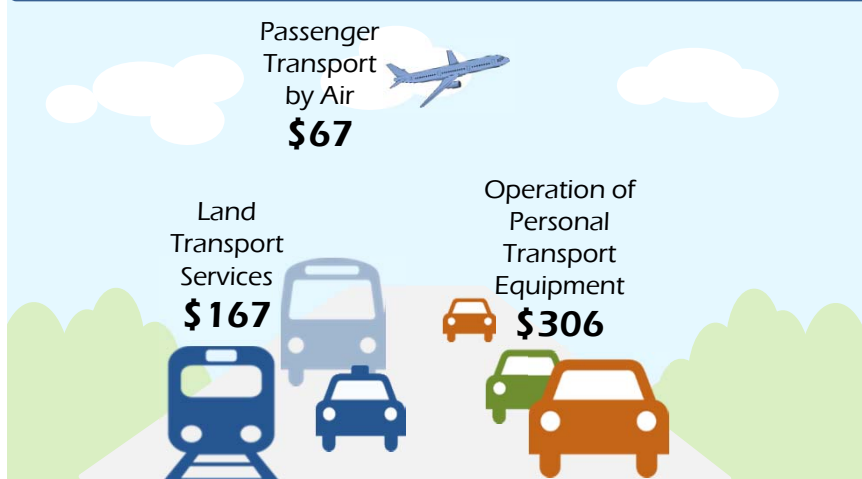


Footwear

\$34



Transport



Others

Personal Care

\$138



Insurance

\$294

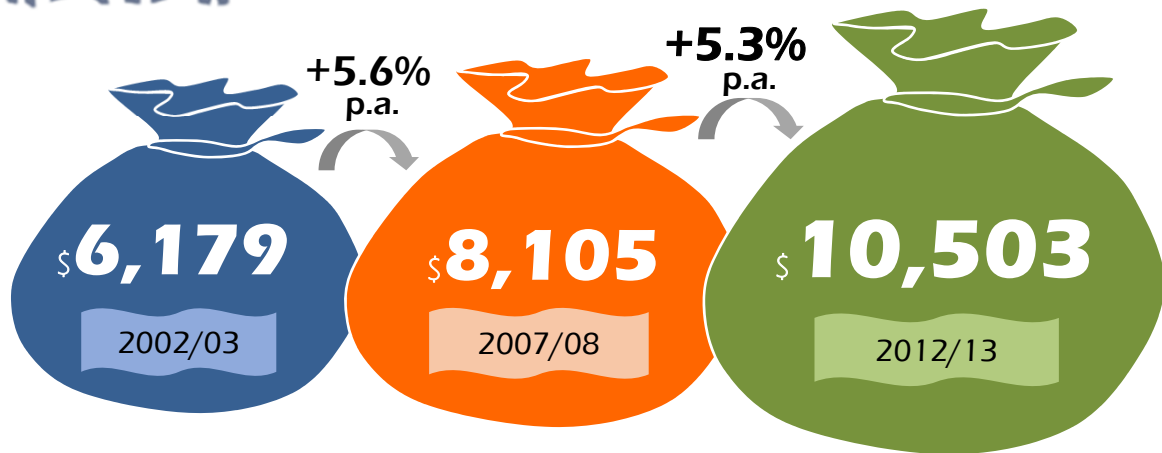


Household Income

from all sources

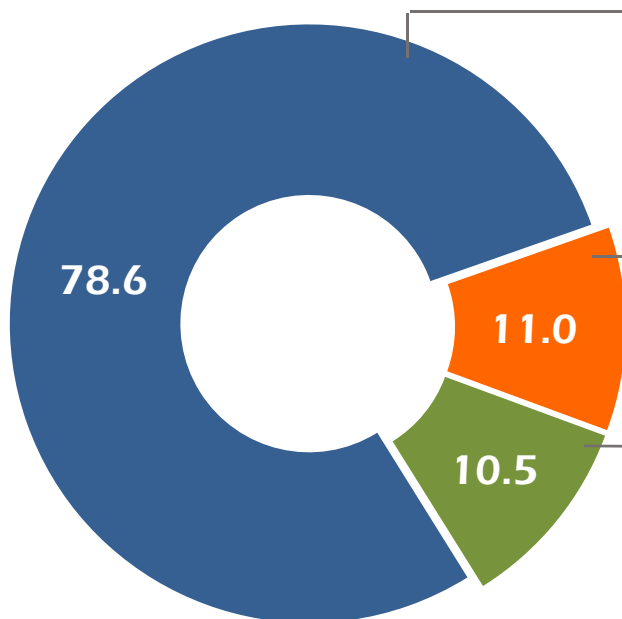


Average Monthly Household Income*
increased **5.3%** per annum from
2007/08 to 2012/13



* While household income is generally compared with household expenditure at the overall household level, income and expenditure on a per member basis provide further insights to the comparison over time where changes could be partly attributed to changes in household size. Both sets of detailed data are [available in the HES 2012/13 Report](#).

Employment Income contributed to **79%** of total household income from all sources



Employment Income

\$5,288	\$6,805	\$8,251
2002/03	2007/08	2012/13

Average Annual Growth: **+3.9%**
(2007/08 – 2012/13)

Business Income

\$608	\$892	\$1,151
2002/03	2007/08	2012/13

Average Annual Growth: **+5.2%**
(2007/08 – 2012/13)

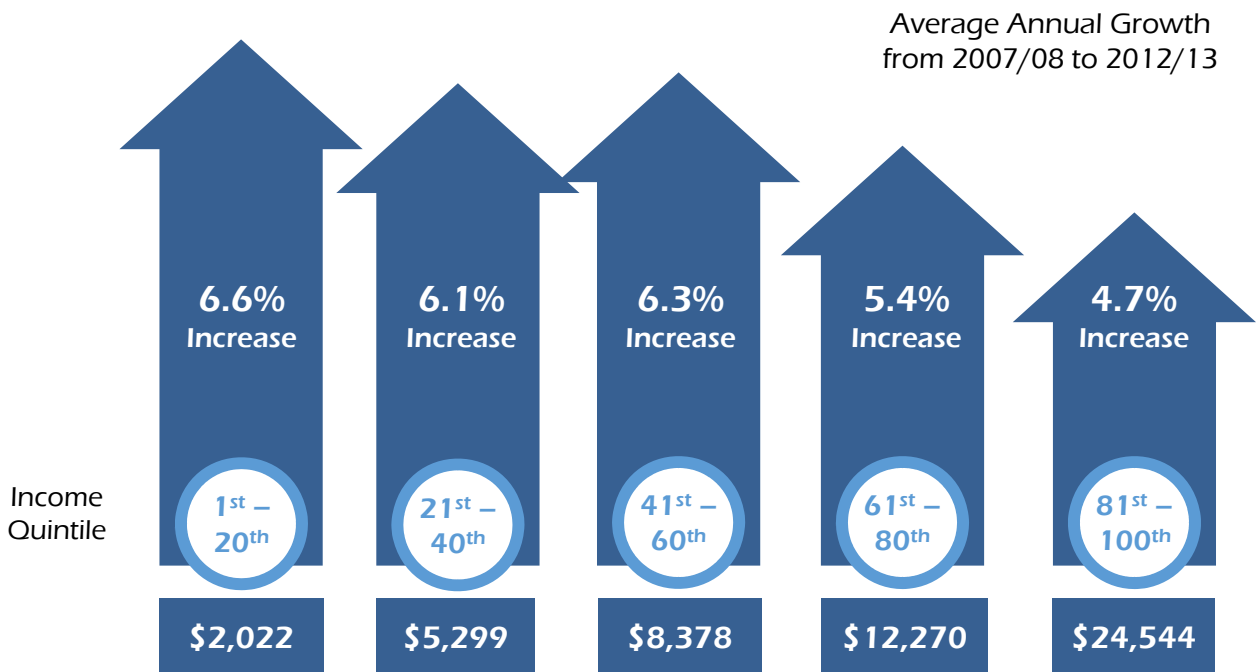
Non-Work Income

\$282	\$408	\$1,101
2002/03	2007/08	2012/13

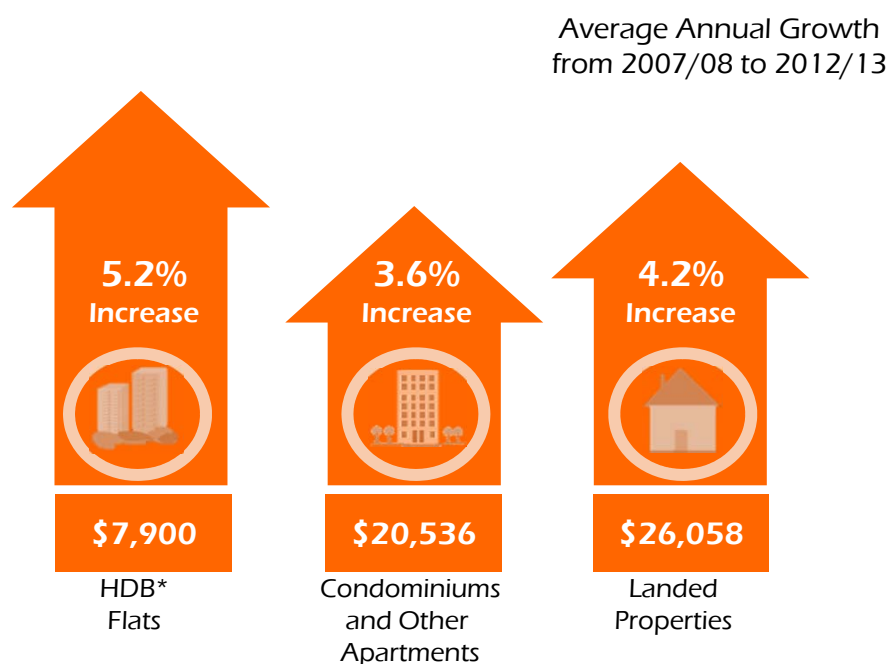
Average Annual Growth: **+22.0%**
(2007/08 – 2012/13)

Over the Last 5 Years...

Growth in Average Monthly Household Income for **All Income Groups**



Higher Income Growth among Households staying in **HDB Flats***

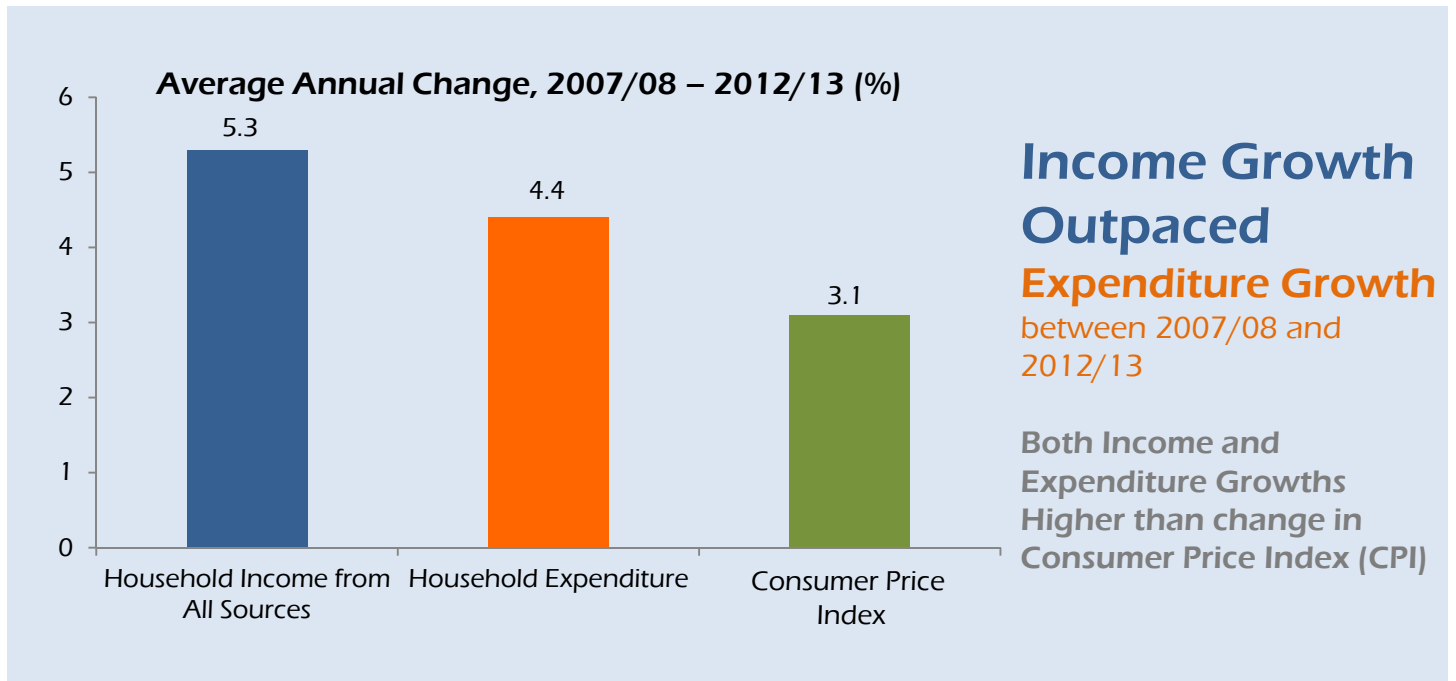


*HDB flats include non-privatised Housing and Urban Development Corporation (HUDC) flats.

Income and Expenditure Growth

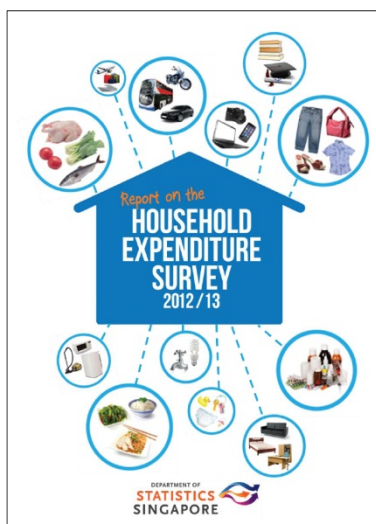
Higher than Inflation

Increase in household expenditure party reflects lifestyle changes and spending on better quality products and services



Report on the

Household Expenditure Survey 2012/13



This report presents the key findings from the Household Expenditure Survey (HES) 2012/13.

Topics covered include household consumption expenditure, households' income, as well as households' socio-economic characteristics and ownership of selected consumer durables.

Changes compared to the results of the previous HES conducted in 2007/08 were highlighted in the analyses. Detailed statistical tables are also included for users who are interested to know more. The full report may be accessed via the [SingStat Website](#).