

information paper
on
prices statistics

REBASING OF THE CONSUMER PRICE INDEX
(Base Year 2014 = 100)

Singapore Department of Statistics
February 2015

Papers in this Information Paper Series are intended to inform and clarify conceptual and methodological changes and improvements in official statistics. The views expressed are based on the latest methodological developments in the international statistical community. Statistical estimates presented in the papers are based on new or revised official statistics compiled from the best available data. Comments and suggestions are welcome.

© Singapore Department of Statistics. All rights reserved.

Please direct enquiries on this information paper to:

Consumer Price Indices Section
Singapore Department of Statistics
Tel : 6332 7700

Email : info@singstat.gov.sg

Application for the copyright owner's written permission to reproduce any part of this publication should be addressed to the Chief Statistician and emailed to the above address.

Rebasing of the Consumer Price Index (Base Year 2014 = 100)

I Introduction

1 The Department of Statistics (DOS) has completed the rebasing of the Consumer Price Index (CPI) from the base year of 2009 to 2014. The rebasing exercise is conducted once every five years to reflect the latest consumption patterns and composition of goods and services consumed by resident households.

2 This information paper presents the latest CPI series with base year of 2014 and compares the weighting patterns and the price movements in the All Items CPI between the 2014-based and 2009-based CPIs. Details such as the coverage and structure of the CPI, data collection, as well as the selection of items and outlets are also included.

II Definition and Uses of the CPI

3 The CPI is designed to measure the average price changes in a fixed basket of consumption goods and services commonly purchased by the households over time. It is commonly used as a measure of consumer price inflation. The CPI is also used as inputs in the formulation of government policies, as well as in the compilation of economic statistics at constant prices.

4 The CPI is not a Cost of Living Index (COLI) but is generally accepted as a proxy indicator when the basket of goods and services and the level of well-being experienced by households are relatively stable. The COLI is a theoretical concept which encompasses more than price changes, and is influenced by a variety of factors such as changes in lifestyle, income level, household composition and consumer preference.

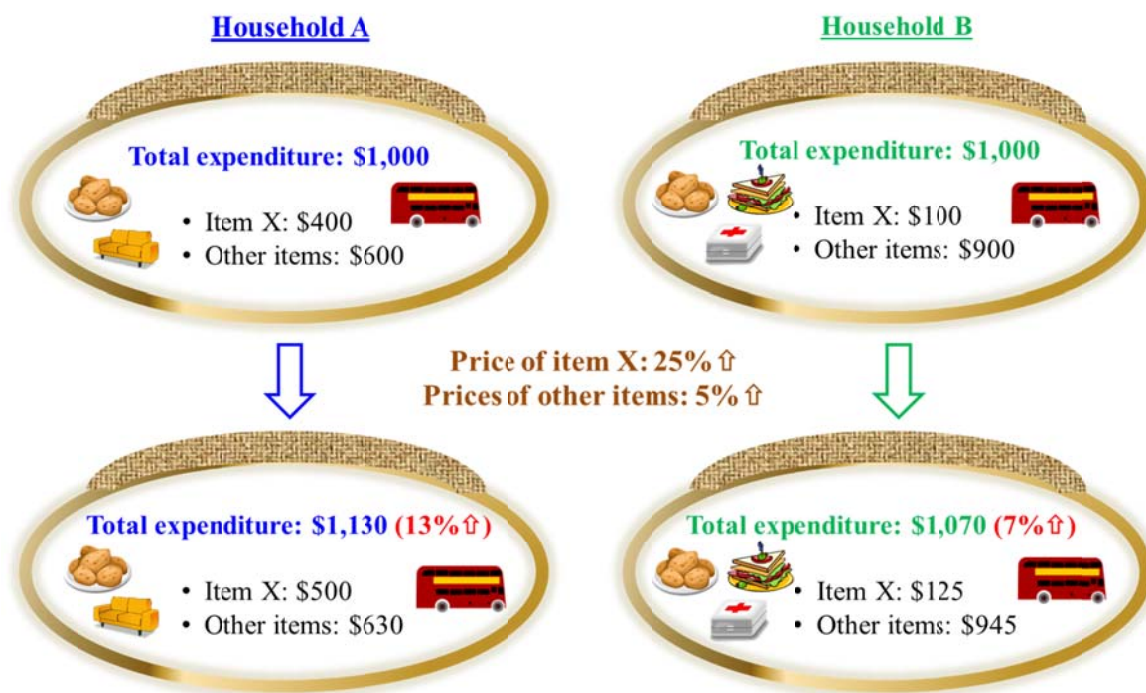
The CPI represents the average price movements across various items and outlets

5 Prices of items used in the computation of CPI are collected from a large number of retailers with a wide range of varieties such as brands, sizes and packaging. While prices of some items may increase significantly at one retail outlet, there are also others where prices have increased more moderately, remained stable or even declined. Taking into consideration the price movements of all these items, the change in the overall CPI thus represents the average price movements across the different selected items sold at various selected retailers.

6 The CPI reflects the collective experience of inflation for all households. It does not correspond to the experience of any particular household. As no two households have exactly the same spending pattern, and prices of different types of goods and services increase/decrease at varying magnitudes, each household's experience of inflation will therefore be different. Depending on the goods and services purchased by each individual household, changes in prices will impact each household to a different extent. Figure 1 illustrates the difference in impact of price changes on two households.

Figure 1
An example: Impact of price changes on households

If Household A spends a larger share of their budget on item X than Household B, and price of item X increases more than those of other items in the CPI basket, Household A's inflation experience will be higher than Household B.



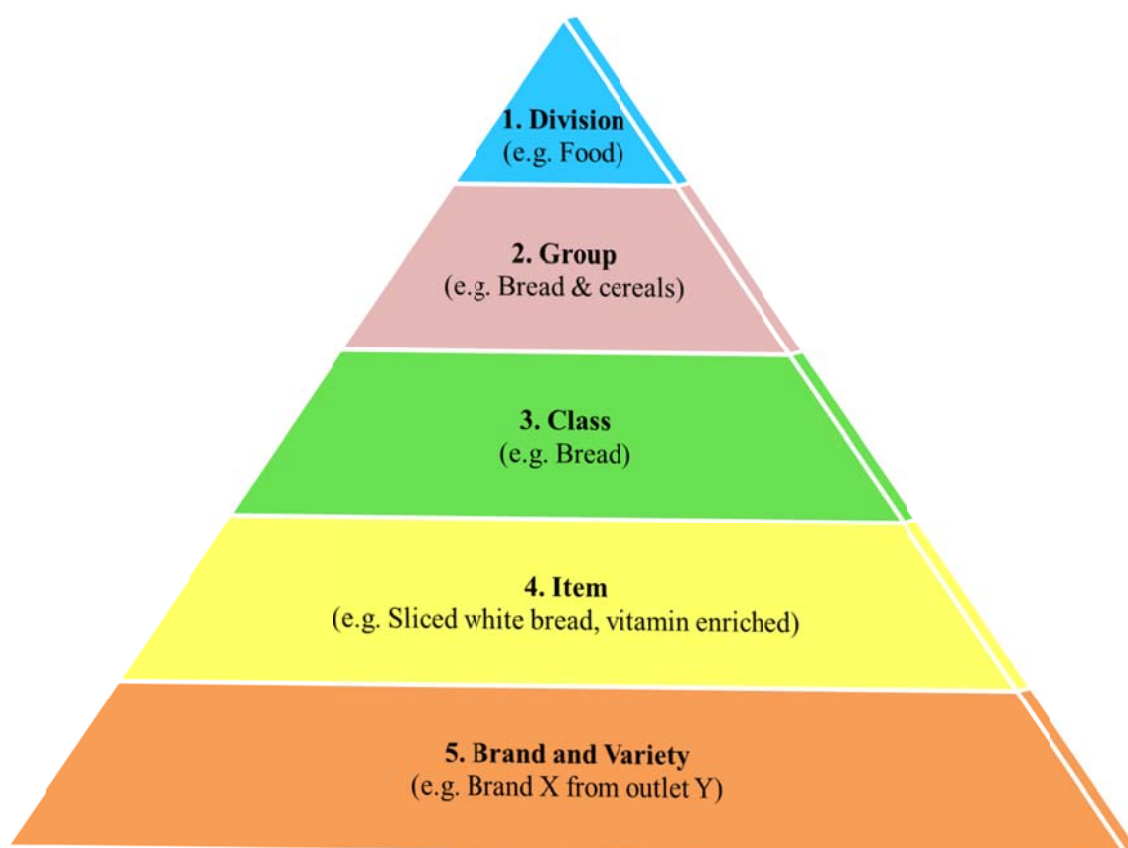
III Scope and Coverage of the CPI

7 The CPI covers only consumption expenditure incurred by resident households. Resident households are defined as households headed by Singapore Citizens or Permanent Residents. The CPI also excludes non-consumption expenditures such as loan repayments, income taxes, purchase of houses, shares and other financial assets etc.

IV Structure of the CPI

8 For the 2014-based CPI, the aggregation structure is aligned to the framework of the Classification of Individual Consumption According to Purpose (COICOP). In COICOP, the goods and services are classified broadly into ten main divisions, namely, Food, Clothing & Footwear, Housing & Utilities, Household Durables & Services, Health Care, Transport, Communication, Recreation & Culture, Education and Miscellaneous Goods & Services. The ten main divisions in the CPI are progressively classified into finer groupings as shown in Figure 2:

Figure 2
Structure of the CPI



V Data Collection

9 The price data used in the compilation of the CPI are obtained from a wide range of retailers and service providers commonly patronised by households. Prices collected refer to those actually paid by consumers, that is, inclusive of taxes levied and net of subsidies granted on the specific individual good or service. Special offers

and discount prices are considered if they are valid for a sufficiently long period and the items are available in reasonable quantities (e.g. supplies are not limited to first few customers only).

10 The price data are obtained through a combination of data collection modes. Prices of most goods and services such as utility tariffs, petrol, school fees, are obtained through postal/email enquiries or websites while those of perishable food items sold at wet markets are collected by field interviewers.

11 The frequency of data collection depends on the price behaviour of the item. Those items whose prices are volatile (e.g. perishable food items) are collected every week while items with more stable prices such as service & conservancy (S&C) charges for HDB flats, utility tariffs, bus/train fares, school fees, medical services and household durables are priced monthly, quarterly, half-yearly or as and when the prices/rates change.

VI The Consumer Price Index with Base Year 2014 =100

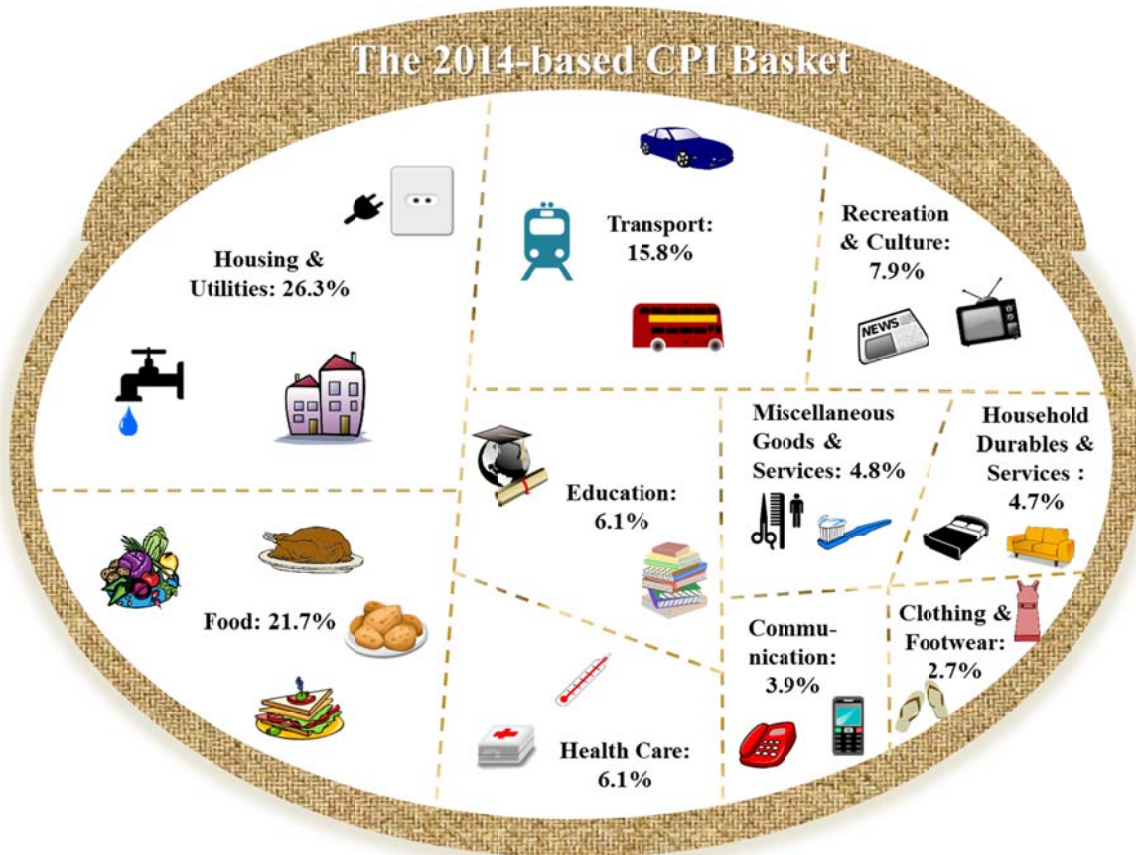
12 To maintain the relevance of CPI, the weighting pattern and the CPI basket of goods & services are updated once every five years. During this latest CPI rebasing exercise, the methodology and coverage of the CPI were also reviewed, taking into account recommendations by the International Labour Organisation (ILO) and other countries' best practices.

The 2014-Based CPI Weighting Pattern

13 In the compilation of the CPI, weights are required to reflect the relative importance of each item in the basket, that is, their share as a proportion of total household expenditure. Households tend to spend more on some items and less on the others. As a result, price movements in different items will have different impact on the households.

14 The base period (or the reference period) for the rebased CPI is 2014. The weighting pattern was derived from the expenditure values collected in the Household Expenditure Survey (HES) conducted between October 2012 and September 2013, and updated to 2014 values by taking into account price changes between 2012/13 and 2014. Figure 3 shows the weighting pattern for the 2014-based CPI.

Figure 3
2014-based CPI Weighting Pattern*



* Based on Classification of Individual Consumption According to Purpose (COICOP)

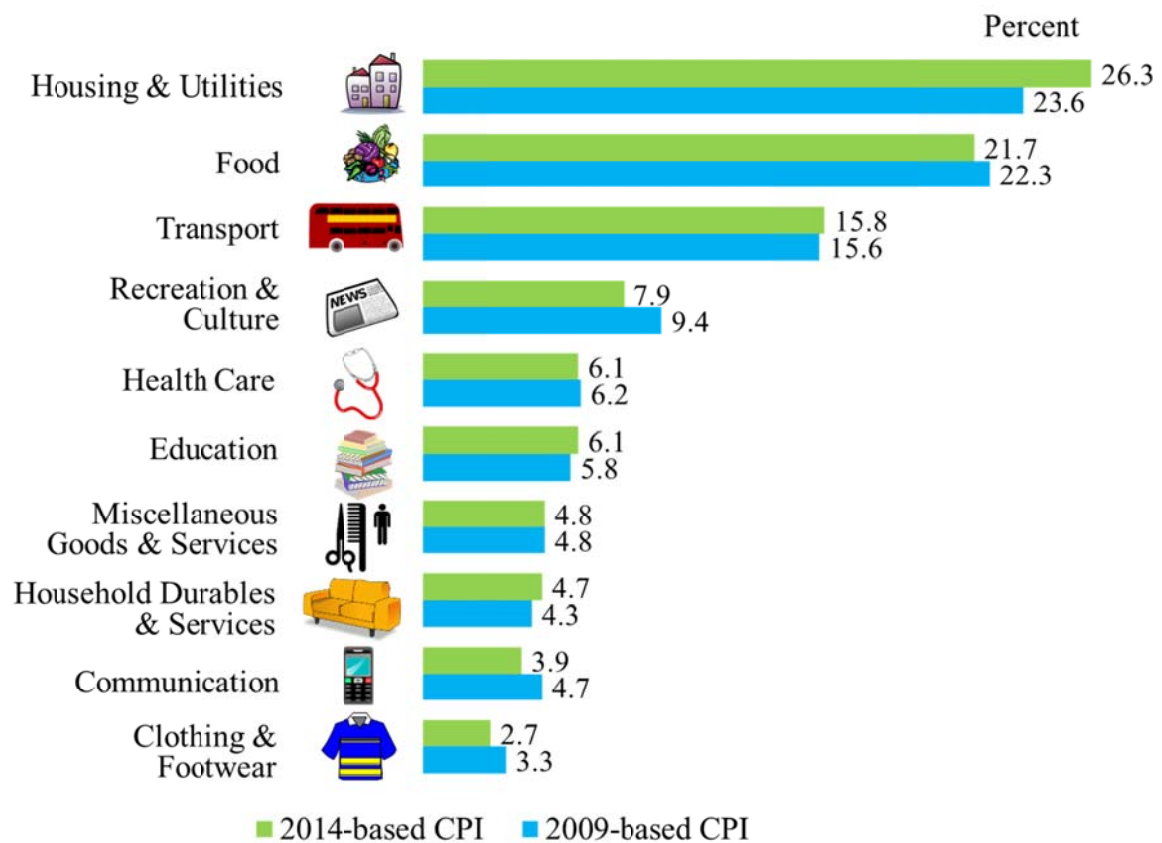
15 For the 2014-based CPI, housing & utilities, food and transport remained as the top three expenditure groups (Figure 4). Together, they accounted for about 64 per cent of the total weights in the CPI, up from 62 per cent in the 2009-based CPI.

16 The weight for housing & utilities rose from 23.6 per cent in 2009-based CPI to 26.3 per cent in 2014-based CPI, as a result of higher expenditure on both rented and owner-occupied accommodation. Within housing & utilities, there was higher share on electricity but lower share on service & conservancy (S&C) charges for HDB flats. The weight for overall food dropped from 22.3 per cent to 21.7 per cent, due mainly to the decline in the weight for food excluding food servicing services which fell from 8.5 per cent to 7.8 per cent. However, in tandem with the increasing tendency for households to dine out, the weight for food servicing services (which include meals at hawker centres, food courts and restaurants, etc.) increased marginally to 13.9 per cent, from 13.8 per cent. Reflecting higher expenditures on petrol, passenger air travel and repairs & maintenance of vehicles, the weight for transport went up to 15.8 per cent, from 15.6 per cent.

17 The weights for household durables & services and education increased to 4.7 per cent and 6.1 per cent respectively. The increases were attributed to higher expenditure on furniture and household appliances as well as increased spending on university education.

18 In contrast, the weight for communication dropped to 3.9 per cent given their slower rate of increase relative to other expenditure items. Lower expenditure on newspapers and books, as well as the scrapping of TV and radio license fees in 2011 also led to a decline in the weight for recreation & culture to 7.9 per cent. The weight for health care stood at 6.1 per cent, with higher expenditure on hospital services offsetting lower spending on dental treatment services.

Figure 4
CPI Weighting Pattern* , 2009-based and 2014-based



* Weighting patterns for both 2009-based and 2014-based CPI are derived based on Classification of Individual Consumption According to Purpose (COICOP).

New Sample of Items and Outlets

19 The goods and services included for pricing in the CPI are carefully selected to ensure that they are representative of those commonly purchased by the majority of the households. During the rebasing exercise, the goods and services included in the CPI basket, and the sample of outlets from which prices were obtained were also reviewed and updated.

20 For the 2014-based CPI, the number of brands/varieties selected had been expanded to 6,600, up from the 6,500 in the 2009-base. Items selected for pricing were those with relatively high weights. Those with relatively low weights were not selected and their weights were distributed to the selected akin items accordingly. This implied that their price movements were represented by similar items included in the CPI basket. Examples of new items included in the 2014-based CPI basket were confinement catering food, inpatient hospice service, digital subscription for newspaper, and term life insurance.

21 The total number of outlets selected for pricing in the 2014-based CPI was about 4,200. The outlets selected for pricing were based on their market shares and they covered a wide range of retailers and service providers commonly patronised by shoppers. Information on sales volume of the establishment was obtained from the Survey of Wholesale and Retail Trades to assist in the selection process. In determining the number of outlets to be recruited, considerations were also given to the price variability among outlets as well as the weight of the item priced. For those items with relatively high weights and wide price variations, more outlets and varieties were selected for pricing. In tandem with rising popularity of online shopping, more establishments with online transaction facilities, such as E-grocery stores, fashion blog shops, ticketing/travel agencies, etc., were included in the 2014-based CPI.

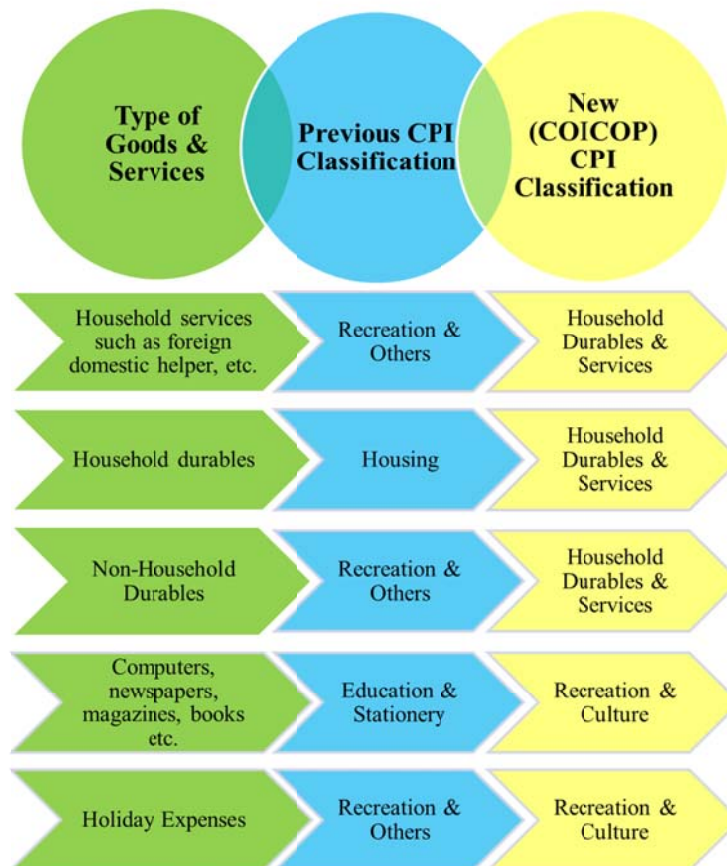
Change in the CPI Classification

22 For the 2014-based CPI, DOS has adopted a new classification which is largely COICOP to categorise the goods and services selected according to the purpose (function) they usually fulfil. This classification is recommended for the compilation of the CPI by the ILO and has been adapted to local context which better meets users' requirements. Adopting a COICOP will improve international comparability and data sharing. It will also enhance the analysis of a more integrated set of consumption, price and expenditure statistics, given that Private Consumption Expenditure (PCE) in the national accounts and HES are also COICOP-based.

23 One key difference between COICOP and the previous CPI classification is the expansion of the number of broad categories from the current eight main groups to ten divisions under the new classification (Appendix I). Some examples of other differences are illustrated in Figure 5 below.

Figure 5

Some Examples: Differences between COICOP and previous CPI classification



VII Computation of the CPI

24 The CPI is calculated using the base-weighted Laspeyres' formula.

$$I_{on} = \frac{\sum P_{nj} Q_{oj}}{\sum P_{oj} Q_{oj}} \times 100$$

$$= \frac{\sum P_{oj} Q_{oj} \left(\frac{P_{nj}}{P_{oj}} \right)}{\sum P_{oj} Q_{oj}} \times 100$$

$$= \sum \left[\frac{P_{nj}}{P_{oj}} \left(\frac{P_{oj} Q_{oj}}{\sum P_{oj} Q_{oj}} \right) \right] \times 100$$

where

I_{on}	<i>is the index for period n compared with base period o,</i>
P_{nj}	<i>is the price of item j in period n,</i>
P_{oj}	<i>is the average price of item j in base period o,</i>
Q_{oj}	<i>is the quantity of item j in base period o,</i>
P_{nj} / P_{oj}	<i>is the price relative of item j between period n and base period o,</i>
$P_{oj} \times Q_{oj}$	<i>is the expenditure on item j in the base period o,</i>
$P_{nj} \times Q_{oj}$	<i>is the expenditure on the same quantity of item j in period n,</i>
Σ	<i>means the summation over all selected items within the level.</i>

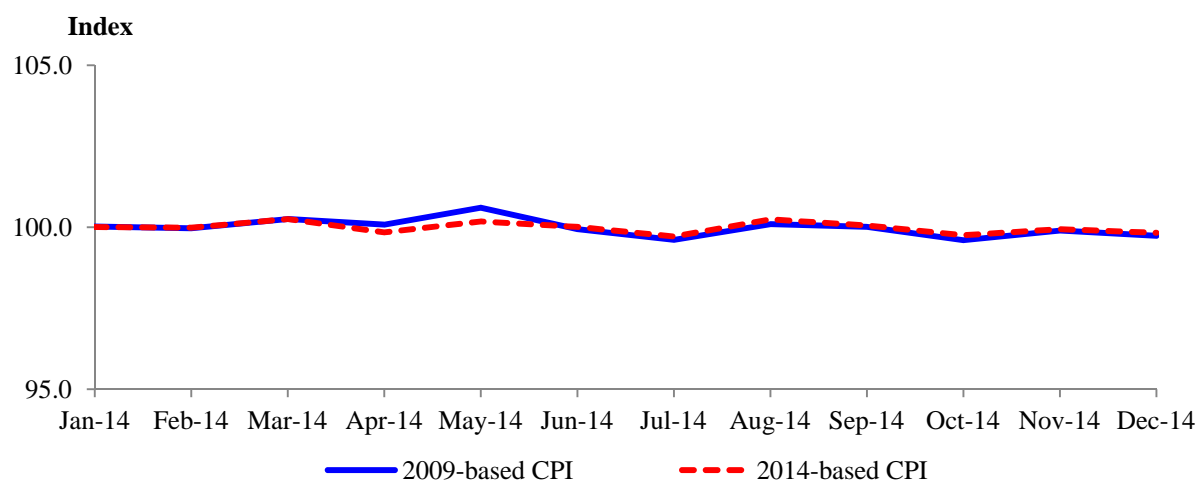
25 Several stages are involved in the calculation of the CPI. At the most detailed level, a price relative is derived for each variety by taking the ratio of its current month's average price to its corresponding base period price (P_{oj}). The price relatives are aggregated to the next higher level by taking the weighted arithmetic mean using the respective weights or geometric mean where weights are not available. All indices are then aggregated in successive levels to derive the indices at next higher levels and finally the overall CPI.

26 As the CPI is compiled on a monthly basis, the yearly index is derived by taking a simple average of the 12 months' indices for the year. Likewise, the annual inflation rate for any year is computed by taking the ratio of the index for the current year compared with that of the preceding year.

Comparison of the 2009-based and 2014-based CPI for All Items

27 Figure 6 compares the price trends of the 2009-based and 2014-based All Items CPI from January to December 2014, which is the overlapping period between the two base years. The movements of the two series are generally similar. The differences in the magnitudes of change observed between the two series are attributed primarily to the differences in weighting pattern as well as the sample of items and outlets selected, coupled with their associated price changes.

Figure 6
All Items CPI: 2009-based and 2014-based



VIII Linking of Historical Series

28 To facilitate comparison of price changes over time, the historical CPI data series are linked to the 2014-based CPI data series by re-scaling them to the new base year of 2014 via a link factor.

IX Data Dissemination

29 The 2014-based CPI series, with indices commencing from January 2014, will be released on 23 February 2015. This latest series will continue to be released on the 23rd of every month, or on the following working day if the 23rd falls on a Saturday, Sunday or a public holiday.

30 The monthly CPI press release and report for the latest reference month is available from the homepage of the Singapore Department of Statistics (<http://www.singstat.gov.sg>). The monthly and annual CPIs are also published in the Monthly Digest of Statistics (MDS) and Yearbook of Statistics (YOS).

31 To facilitate comparison and analysis, the data series on the CPI are also made available on the Department's website (<http://www.singstat.gov.sg/tablebuilder>).

2009-BASED AND 2014-BASED CPI CLASSIFICATION STRUCTURE

2009-based CPI	2014-based CPI
FOOD	FOOD
FOOD EXCLUDING PREPARED MEALS	FOOD EXCLUDING FOOD SERVICING SERVICES
Rice & Other Cereals	Bread & Cereals
Meat & Poultry	Meat
Seafood	Fish & Seafood
Dairy Products & Eggs	Milk, Cheese & Eggs
Cooking Oils & Fats	Oils & Fats
Vegetables & Vegetable Products	Vegetables
Fruits	Fruits
Sugar, Preserves & Confectionery	Sugar, Preserves & Confectionery
Non-Alcoholic Beverages	Non-Alcoholic Beverages
Other Food	Other Food
PREPARED MEALS	FOOD SERVICING SERVICES
Hawker Food (Including Food Courts)	Hawker Food (Including Food Courts)
Fast Food	Fast Food
Restaurant Food	Restaurant Food
Catered Food	Catered Food
CLOTHING & FOOTWEAR	CLOTHING & FOOTWEAR
HOUSING	HOUSING & UTILITIES
Accommodation	Accommodation
Fuel & Utilities	Fuel & Utilities
Household Durables	HOUSEHOLD DURABLES & SERVICES
	Household Durables
	Household Services & Supplies
TRANSPORT	TRANSPORT
Private Road Transport	Private Road Transport
Public Road Transport	Public Road Transport
Other Travel & Transport	Other Travel & Transport
COMMUNICATION	COMMUNICATION
EDUCATION & STATIONERY	EDUCATION
Tuition & Other Fees	Tuition & Other Fees
School Textbooks & Stationery	School Textbooks & Related Study Guides
Newspapers, Magazines & Other books	
HEALTH CARE	HEALTH CARE
Medical Treatment	Medical Products, Appliances & Equipment
Dental Treatment	Medical & Dental Treatment
Proprietary Medicine & Supplies	
Medical Health Insurance	
RECREATION & OTHERS	RECREATION & CULTURE
Recreation & Entertainment	Recreation & Entertainment
Alcoholic Drinks & Tobacco	Newspapers, Books & Stationery
Personal Care	Holiday Expenses
Household Services	MISCELLANEOUS GOODS & SERVICES
Non-Durable Household Goods	Personal Care
Personal Effects	Alcoholic Drinks & Tobacco
Hobbies & Other Miscellaneous Expenditure	Personal Effects
	Other Miscellaneous Expenditure

WEIGHTING PATTERN FOR 2014-BASED CONSUMER PRICE INDEX

Division, Group and Class	Per 10,000
ALL ITEMS	10,000
FOOD	2,167
FOOD EXCLUDING FOOD SERVICING SERVICES	774
<i>Bread & Cereals</i>	<i>141</i>
Rice	24
Flour	2
Bread	37
Noodles & Pasta	12
Biscuits & Cookies	16
Cakes & Pastries	40
Other Cereals & Cereal Preparations	10
<i>Meat</i>	<i>120</i>
Chilled Pork	37
Frozen Pork	5
Chilled Beef	8
Frozen Beef	1
Chilled Mutton	3
Frozen Mutton	1
Chilled Poultry	30
Frozen Poultry	8
Bacon, Ham & Sausages	8
Other Processed Meat Products	19
<i>Fish & Seafood</i>	<i>118</i>
Fresh Fish	66
Frozen Fish	2
Dried & Salted Fish	3
Canned / Bottled Fish	3
Other Fresh & Frozen Sea Products	25
Other Dried & Salted Sea Products	4
Other Canned / Bottled Sea Products	4
Other Prepared Fish & Seafood Products	11

WEIGHTING PATTERN FOR 2014-BASED CONSUMER PRICE INDEX

(continued)

Division, Group and Class	Per 10,000
<i>Milk, Cheese & Eggs</i>	93
Milk	70
Other Dairy Products	11
Eggs	12
<i>Oils & Fats</i>	16
Butter, Margarine & Other Fats	5
Cooking Oils	11
<i>Fruits</i>	84
Fresh Tropical Fruits	31
Fresh Non-Tropical Fruits	41
Canned / Bottled Fruits	1
Dried & Preserved Fruits	4
Nuts	6
Edible Seeds	1
<i>Vegetables</i>	95
Fresh Leafy Vegetables	31
Fresh Fruit Vegetables	18
Fresh Root Vegetables	18
Fresh Mushrooms & Spouts	4
Frozen Vegetables	2
Dried, Salted & Preserved Vegetables	4
Canned / Bottled / Packeted Vegetables & Mushrooms	4
Beans	2
Processed Beans & Beans Preparation	5
Processed Vegetable Based Products	7
<i>Sugar, Preserves & Confectionery</i>	30
Sugar	3
Sweets & Chocolates	15
Ice-Cream	7
Syrups, Sugar Preserves, Jam & Spread	5

WEIGHTING PATTERN FOR 2014-BASED CONSUMER PRICE INDEX*(continued)*

Division, Group and Class	Per 10,000
<i>Non-Alcoholic Beverages</i>	46
Coffee	10
Tea	5
Cocoa & Other Beverages	6
Mineral Water	2
Soft Drinks	15
Fruit & Vegetable Juices	7
Other Non-Alcoholic Beverages	1
<i>Other Food</i>	31
Soups, Stocks & Broths	3
Sauces, Paste, Culinary Herbs & Condiments	15
Spices & Other Related Preparations	4
Other Food n.e.c.	9
FOOD SERVICING SERVICES	1,393
Restaurant Food	486
Fast Food	85
Hawker Food (Including Food Courts)	806
Catered Food	16
CLOTHING & FOOTWEAR	273
<i>Garments</i>	201
Men's Outer-Clothing	53
Men's Under-Clothing	4
Women's Outer-Clothing	109
Women's Under-Clothing	11
Boys' Outer-Clothing	8
Boys' Under-Clothing	1
Girls' Outer-Clothing	10
Girls' Under-Clothing	1
Infants' Clothing	4

WEIGHTING PATTERN FOR 2014-BASED CONSUMER PRICE INDEX*(continued)*

Division, Group and Class	Per 10,000
<i>Other Articles of Clothing & Clothing Accessories</i>	9
Men's Clothing Accessories	4
Women's Clothing Accessories	4
Infants' Clothing Accessories	1
<i>Cleaning, Repair & Hire of Clothing</i>	4
Laundry & Cleaning of Clothing	2
Alteration of Clothing	2
<i>Footwear</i>	59
Men's Footwear	24
Women's Footwear	29
Children's Footwear (Including Infants')	5
Repair & Hire of Footwear	1
HOUSING & UTILITIES	2,625
<i>Accommodation</i>	2,287
Actual Rentals for Housing	214
Imputed Rentals for Housing	1,899
Housing Maintenance & Repairs	174
<i>Fuel & Utilities</i>	338
Water Supply	64
Refuse Collection	14
Sewerage Collection	11
Electricity	215
Gas (Including Liquefied Petroleum Gas)	34
HOUSEHOLD DURABLES & SERVICES	475
<i>Household Durables</i>	179
Furniture	63
Household Furnishings	3
Bedding & Bed Linen	13
Curtains & Other Furnishing Fabrics	6
Other Household Linens & Textiles	4

WEIGHTING PATTERN FOR 2014-BASED CONSUMER PRICE INDEX*(continued)*

Division, Group and Class	Per 10,000
Major Household Appliances	37
Small Electric Household Appliances	15
Repair of Household Appliances	7
Glassware, Tableware & Household Utensils	21
Small Tools & Miscellaneous Accessories	10
<i>Household Services & Supplies</i>	<i>296</i>
Soap & Cleansing Preparations	23
Other Non-Durable Household Goods	28
Domestic Services	244
Laundry & Cleaning of Household Linens & Textiles	1
HEALTH CARE	615
Medical Products, Appliances & Equipment	140
Medical & Dental Treatment	475
TRANSPORT	1,579
<i>Private Road Transport</i>	<i>1,149</i>
Purchase of Motor Cars	573
Purchase of Motorcycles & Scooters	14
Purchase of Bicycles	1
Spare Parts & Accessories	9
Fuels & Lubricants	252
General Repair & Maintenance of Personal Transport Equipment	88
Other Services in respect of Personal Transport Equipment	212
<i>Public Road Transport</i>	<i>304</i>
Train Fares	84
Bus Fares	90
Taxi Fares	105
Commuting Fares	21
Other Land Transport Services	4

WEIGHTING PATTERN FOR 2014-BASED CONSUMER PRICE INDEX*(continued)*

Division, Group and Class	Per 10,000
<i>Other Travel & Transport</i>	126
Air Fares	121
Sea Fares	3
Others Travel & Transport n.e.c.	2
COMMUNICATION	385
Postal & Courier Services	2
Telecommunication Equipment	19
Telecommunication Services	364
RECREATION & CULTURE	788
<i>Recreation & Entertainment</i>	388
Audio-visual, Photographic & Information Processing Equipment	66
Pets & Other Recreational Goods	72
Recreational & Cultural Services	250
<i>Newspapers, Books & Stationery</i>	50
Books	13
Newspapers	18
Magazines	3
Stationery & Art Materials	16
<i>Holiday Expenses</i>	350
Hotels	66
Other Accommodation Services	2
Package Holidays (Including Free and Easy Packages)	282
EDUCATION	615
<i>Tuition & Other Fees</i>	606
General, Vocational & Higher Education	409
Other Educational Courses	197
<i>School Textbooks & Related Study Guides</i>	9
School Textbooks & Reference Books	7
Assessment Books & Papers	2

WEIGHTING PATTERN FOR 2014-BASED CONSUMER PRICE INDEX*(continued)*

Division, Group and Class	Per 10,000
MISCELLANEOUS GOODS & SERVICES	478
<i>Personal care</i>	<i>244</i>
Hairdressing & Salons	46
Personal Grooming & Beauty Treatment	56
Electric Appliances for Personal Care	2
Other Appliances, Articles & Products for Personal Care	140
<i>Alcoholic Drinks & Tobacco</i>	<i>100</i>
Spirits	5
Wine	10
Beer (Including Stout)	12
Cigarettes	73
<i>Personal Effects</i>	<i>64</i>
Jewellery, Clocks & Watches	12
Travel Goods & Other Carriers of Personal Effects	44
Articles for Children & Babies	3
Other Personal Articles	5
<i>Other Miscellaneous Expenditure</i>	<i>70</i>

LIST OF ITEMS SELECTED FOR PRICING

Division	Group and Class	Examples of Items Priced
ALL ITEMS		
FOOD		
FOOD EXCLUDING FOOD SERVICING SERVICES		
<i>Bread & Cereals</i>		
	Rice	Thai white rice, 100% whole, fragrant, premium Thai white rice, 100% whole, fragrant, medium Thai white rice, 100% whole, ordinary Brown rice Japanese rice Australian rice Glutinous rice Basmati rice
	Flour	Wheat flour Pancake flour mix Corn flour Self-raising flour Bread flour
	Bread	White & brown bread Vitamin enriched white bread Wholemeal bread Fruit loaf Bread with meat Bread with cream Bread with other fillings Bread with no filling Chilled / frozen bread
	Noodles & Pasta	Fresh noodles Instant noodles Rice noodles Rice vermicelli Pasta

LIST OF ITEMS SELECTED FOR PRICING*(continued)*

Division	Group and Class	Examples of Items Priced
	Biscuits & Cookies	Soda crackers Butter cookies Salted & cheese biscuits Chocolate cookies Digestive biscuits Biscuits with cream Wafer biscuits Assorted biscuits
	Cakes & Pastries	Nonya, Chinese, Malay & Indian cakes / pastries Assorted / whole western cakes Curry puffs Fruit / cream rolls & puffs Waffles (including pancakes) Doughnuts Tarts
	Other Cereals & Cereal Preparations	Rolled oats Prepared baby cereals Breakfast cereals Muesli & cereal bars Instant cereal drinks
	<i>Meat</i>	
	Chilled Pork	Loin Shoulder Lean & fat Belly Side Leg
	Frozen Pork	Loin Belly Side
	Chilled Beef	Brisket Rumpsteak

LIST OF ITEMS SELECTED FOR PRICING*(continued)*

Division	Group and Class	Examples of Items Priced
	Chilled Beef <i>(continued)</i>	Striploin / Sirloin Rib Tenderloin Minced
	Frozen Beef	Minced / cubes / shabu shabu
	Chilled Mutton	Loin
	Frozen Mutton	Loin
	Chilled Poultry	Hens Spring chickens Chicken wings Chicken thighs / drumsticks Chicken fillets / breasts Ducks
	Frozen Poultry	Hens Chicken wings Chicken thighs Chicken fillets / breasts
	Bacon, Ham & Sausages	Bacon Cooked ham European sausages Chicken franks Chinese sausages
	Other Processed Meat Products	Chicken nuggets Meatballs Luncheon meat Meat pies Grilled meat (bak kwa) Meat floss Cooked pork Cooked poultry

LIST OF ITEMS SELECTED FOR PRICING*(continued)*

Division	Group and Class	Examples of Items Priced
	Other Processed Meat Products <i>(continued)</i>	Stewed pork Pork cubes Pork legs with mushroom Minced pork with bean pastes Curry chicken Corned beef Curry mutton Satays
	<i>Fish & Seafood</i>	
	Fresh Fish	Cod Coral (delah) Gold / yellow-banded scad (kuning) Grouper Horse mackerel (selar) Mackerel (kembong) Pomfret Salmon Ray Sea bass Sea bream Sheng yu Snapper Spanish mackerel (tenggiri) Threadfin Dorab Leather jacket fish
	Frozen Fish	Cod Saba
	Dried & Salted Fish	Dried anchovies (ikan bilis) Threadfin
	Canned/Bottled Fish	Sardines Tuna

LIST OF ITEMS SELECTED FOR PRICING*(continued)*

Division	Group and Class	Examples of Items Priced
	Other Fresh & Frozen Sea Products	Prawns Crabs Squids Scallops
	Other Dried & Salted Sea Products	Dried prawns Dried sea slugs Dried scallops Dried oysters Dried cuttlefish
	Other Canned/Bottled Sea Products	Abalone Clams
	Other Prepared Fish & Seafood Products	Fish cakes Fish balls Fish fingers / fillets Sotong balls Fish/prawn crackers Fish floss Fish otar Crab sticks
	<i>Milk, Cheese & Eggs</i>	
	Milk	Fresh milk UHT milk Condensed milk Evaporated milk Infant milk powder Full cream milk powder Skimmed milk powder Cultured milk Yoghurt drink
	Other Dairy Products	Cheese Soya bean milk

LIST OF ITEMS SELECTED FOR PRICING*(continued)*

Division	Group and Class	Examples of Items Priced
	Other Dairy Products <i>(continued)</i>	Yoghurt Artificial cream
	Eggs	Hen eggs Salted & preserved eggs
	<i>Oils & Fats</i>	
	Butter, Margarine & Other Fats	Margarine Butter Peanut Butter Ghee
	Cooking Oils	Cooking & vegetable oil Canola oil Sesame oil Olive oil Sunflower oil
	<i>Fruits</i>	
	Fresh Tropical Fruits	Bananas Coconuts Dragon fruits Guavas Mangoes Honey dew & rock melons Papayas Pineapples Star fruits Watermelons
	Fresh Non-Tropical Fruits	Oranges Apples Grapes Pears Lemons Strawberries Kiwis

LIST OF ITEMS SELECTED FOR PRICING*(continued)*

Division	Group and Class	Examples of Items Priced
	Canned / Bottled Fruits	Pineapples Peaches Longans Fruit cocktail
	Dried & Preserved Fruits	Dates Prunes Dried longans Dried mangoes Raisins Cranberries
	Nuts	Pistachio nuts Peanuts Cashew nuts Ginkgo nuts Lotus seeds Almonds Dried horse chestnuts Macadamia nuts
	Edible Seeds	Black melon seeds Pumpkin seeds Sunflower seeds
	<i>Vegetables</i>	
	Fresh Leafy Vegetables	Asparagus Chinese white cabbage Broccoli Cabbage Cauliflower Celery Chinese kale Baby bok choy ('nai bai') Kang kong

LIST OF ITEMS SELECTED FOR PRICING*(continued)*

Division	Group and Class	Examples of Items Priced
	Fresh Leafy Vegetables <i>(continued)</i>	Lettuce Spinach (por choy / puay leng) Small mustard Spinach (bayam) Spring onions Taiwan peh chye
	Fresh Fruit Vegetables	Bitter gourds Chillies Corns Cucumbers Egg plants French beans Green peppers Ladies' fingers Long string beans Squashes Tomatoes Winter melons
	Fresh Root Vegetables	Potatoes Sweet potatoes Onions Garlics Gingers Carrots Radishes Lotus roots
	Fresh Mushrooms & Sprouts	Bean sprouts Golden mushrooms Button mushrooms
	Frozen Vegetables	French fries Hash brown Mixed vegetables

LIST OF ITEMS SELECTED FOR PRICING*(continued)*

Division	Group and Class	Examples of Items Priced
	Dried, Salted & Preserved Vegetables	Dried chillies Dried mushrooms Dried seaweed Dried fungi Achar
	Canned / Bottled / Packeted Vegetables & Mushrooms	Button mushrooms Pickled lettuce Straw mushrooms Young corns
	Beans	Red, green & black beans
	Processed Beans & Beans Preparation	Beancurds Bean vermicelli Preserved bean curd (hoo joo) Tau pok Bean curd sticks Fermented beans Baked beans
	Processed Vegetable Based Products	Potato chips Tapioca crackers Popcorn
	<i>Sugar, Preserves & Confectionery</i>	
	Sugar	White sugar Rock sugar Brown sugar Sweetener
	Sweets & Chocolates	Sweets Fruit gums Chocolates

LIST OF ITEMS SELECTED FOR PRICING*(continued)*

Division	Group and Class	Examples of Items Priced
	Ice-Cream	Ice-cream in tubs Ice-cream bars/sticks
	Syrups, Sugar Preserves, Jam & Spread	Kaya Jam Honey Chocolate spread
	<i>Non-Alcoholic Beverages</i>	
	Coffee	Coffee powder Instant coffee
	Tea	Chinese & flower tea Tea leaves Tea bags Herbal tea Japanese green tea
	Cocoa & Other Beverages	Malted cocoa-based beverages
	Mineral Water	Mineral Water
	Soft Drinks	Aerated soft drinks Non-aerated soft drinks
	Fruit & Vegetable Juices	Fruit juices Fruit drinks
	Other Non-Alcoholic Beverages	Cordials & squashes
	<i>Other Food</i>	
	Soups, Stocks & Broths	Mushroom soups Chicken broths/cubes Chicken soups

LIST OF ITEMS SELECTED FOR PRICING*(continued)*

Division	Group and Class	Examples of Items Priced
	Sauces, Paste, Culinary Herbs & Condiments	Soy sauces Oyster sauces Tomato sauces Chilli sauces Pasta sauces Salt Mayonnaise Vinegar Pre-packed Chinese herbal preparations
	Spices & Other Related Preparations	Curry powder Curry pastes/sauces Pepper powder Spice powder
	Other Food n.e.c.	Assorted 'yong tau hoo' Sushi Jelly
FOOD SERVICING SERVICES		
	Restaurant Food	Buffet meals Dim sum Chinese cuisine Malay / Indonesian / Indian food Italian / Korean / Japanese / Thai / Vietnamese food Western food Cakes & pastries Desserts Tea & coffee Soft drinks Float / milk shake / ice cream / sundae Fruit juices Beer & stout Wine & spirits Wedding lunch / dinner

LIST OF ITEMS SELECTED FOR PRICING*(continued)*

Division	Group and Class	Examples of Items Priced
	Fast Food	Burgers & sandwiches Fried chicken Fried fish French fries Dine-in & delivery meals Hot and cold beverages Ice cream / sundaes / milk shakes
	Hawker Food (Including Food Courts)	Noodles Rice vermicelli Rice with meat / fish / vegetables Zhu chao Malay & Indian food Western food Korean / Japanese / Thai food Chinese / Nyonya cakes & dim sum Malay & Indian cakes Common local delicacies Finger food Desserts Fresh fruits Fresh fruit juices Hot & cold beverages Alcoholic beverages
	Catered Food	Regular meal catering (including confinement food) Buffet catering

CLOTHING & FOOTWEAR*Garments*

Men's Outer-Clothing	Shirts (incl. made-to-measure) T-shirts Suits (incl. made-to-measure) Jackets
----------------------	--

LIST OF ITEMS SELECTED FOR PRICING*(continued)*

Division	Group and Class	Examples of Items Priced
	Men's Outer-Clothing <i>(continued)</i>	Jeans Trousers / pants (incl. made-to-measure) Shorts & bermudas Raincoats Sarong Swimming trunks
	Men's Under-Clothing	Briefs Socks Singlets Pyjamas
	Women's Outer-Clothing	Blouses (incl. made-to-measure) T-shirts Dresses (incl. made-to-measure) Skirts / pant-suits (incl. made-to-measure) Jackets / Blazers Sweaters Pants (incl. made-to-measure) Jeans Skirts Shorts & bermudas Sarong Sari Swimming costumes Leggings / Tights
	Women's Under-Clothing	Brassieres Panties Pyjamas & night-dresses Socks / Stockings
	Boys' Outer-Clothing	Shirts T-shirts Sweaters Trousers / Jeans / Shorts School uniforms Swimming trunks

LIST OF ITEMS SELECTED FOR PRICING*(continued)*

Division	Group and Class	Examples of Items Priced
	Boys' Under-Clothing	Singlets Briefs Pyjamas Socks
	Girls' Outer-Clothing	Blouses T-shirts Dresses Suits Slacks / Jeans School uniforms Skirts Swimming costumes Sweaters
	Girls' Under-Clothing	Panties Pyjamas Socks
	Infants' Clothing	Dresses Gift sets Vests Sweaters Rompers Shorts
	<i>Other Articles of Clothing & Clothing Accessories</i>	
	Men's Clothing Accessories	Belts Handkerchiefs Neckties Caps
	Women's Clothing Accessories	Belts Scarves Shawls

LIST OF ITEMS SELECTED FOR PRICING*(continued)*

Division	Group and Class	Examples of Items Priced
	Infants' Clothing Accessories	Mittens Bibs Booties
	<i>Cleaning, Repair & Hire of Clothing</i>	
	Laundry & Cleaning of Clothing	Laundry Dry cleaning
	Alteration of Clothing	Dresses / pants / jeans
	<i>Footwear</i>	
	Men's Footwear	Shoes (leather, canvas & other materials) Sports shoes Sandals Slippers
	Women's Footwear	Shoes (leather, canvas & other materials) Sports shoes Dress sandals Slippers
	Children's Footwear (Including Infants')	Shoes (leather, canvas & other materials) Sports shoes Sandals / slippers
	Repair & Hire of Footwear	Repair of soles & heels
	HOUSING & UTILITIES	
	<i>Accommodation</i>	
	Actual Rentals for Housing	Monthly rentals for whole houses and rooms, including hostels
	Imputed Rentals for Housing	Imputed rentals for housing
	Housing Maintenance & Repairs	Monthly service & conservancy charges for flats

LIST OF ITEMS SELECTED FOR PRICING*(continued)*

Division	Group and Class	Examples of Items Priced
	Housing Maintenance & Repairs <i>(continued)</i>	Repairs & renovation of house / room Paint Housing insurance
	<i>Fuel & Utilities</i>	
	Water Supply	Water tariffs for domestic consumption Water-borne fees
	Refuse Collection	Monthly domestic refuse removal fees
	Sewerage Collection	Sanitary appliances / sewer fees
	Electricity	Electricity tariffs for domestic consumption
	Gas (Including Liquefied Petroleum Gas)	Gas tariffs for domestic consumption of piped gas Liquefied petroleum gas
	HOUSEHOLD DURABLES & SERVICES	
	<i>Household Durables</i>	
	Furniture	Beds Wardrobes Sideboards Tables Chairs Sitting room sets Dining room sets Bedroom sets Kitchen cabinets
	Household Furnishings	Mattresses Ceiling lights Lamps
	Bedding & Bed Linen	Pillows & bolsters Pillows / mattresses / quilt covers

LIST OF ITEMS SELECTED FOR PRICING*(continued)*

Division	Group and Class	Examples of Items Priced
	Bedding & Bed Linen <i>(continued)</i>	Pillows / bolster cases Bedsheets Quilts
	Curtains & Other Furnishing Fabrics	Curtain materials Roller blinds
	Other Household Linens & Textiles	Linenry Door mats / bathroom mats
	Major Household Appliances	Refrigerators Air-conditioners Vacuum cleaners Washing machines / dryers Air purifiers Microwave ovens Water heaters Cookers & burners
	Small Electric Household Appliances	Irons Fans Rice cookers Kettles Coffee makers Blenders Electrical steamboat Air fryers Oven toasters
	Repair of Household Appliances	Repairs & servicing of household appliances
	Glassware, Tableware & Household Utensils	Chinaware / Porcelain Plastic ware / Melamine ware Glassware Forks, spoons & knives Choppers Pots & pans Tiffin carriers

LIST OF ITEMS SELECTED FOR PRICING*(continued)*

Division	Group and Class	Examples of Items Priced
	Glassware, Tableware & Household Utensils <i>(continued)</i>	Kitchen shears Tongs Can openers Ladles Graters Chopping boards Plastic pails Laundry baskets Dustbins Ironing boards
	Small Tools & Miscellaneous Accessories	Electric bulbs / fluorescent tubes Power sockets Electrical extension cords Hand tools Padlocks Batteries
	<i>Household Services & Supplies</i>	
	Soap & Cleansing Preparations	Soap powder Liquid laundry detergents Fabric softeners Fabric bleach Dishwashing detergents Floor cleaners Disinfectants Glass, kitchen & drain pipe cleaners
	Other Non-Durable Household Goods	Brooms, brushes and mops Kitchen towels Disposable cups, plates, forks & spoons Storage bags Aluminium foil Air fresheners Insecticides Joss sticks Joss paper

LIST OF ITEMS SELECTED FOR PRICING*(continued)*

Division	Group and Class	Examples of Items Priced
	Other Non-Durable Household Goods <i>(continued)</i>	Clothes' hangers and pegs Baby feeding accessories Hooks Kitchen lighters Wiper sheets Candles
	Domestic Services	Salaries for foreign domestic maids Government levies on foreign domestic maids Insurance for foreign domestic maids Part-time domestic house cleaning charges Garden maintenance fees Pest extermination services
	Laundry & Cleaning of Household Linens & Textiles	Laundry Dry cleaning
HEALTH CARE		
<i>Medical Products, Appliances & Equipment</i>		
	Pills & Syrup	Pills / tablets / capsules Syrup Lozenges & medicinal sweets
	Vitamins & Health Food / Supplements	Vitamins Caltrates Royal Jelly Manuka honey Cod liver oil Omega-3 fatty acids Evening primrose oil
	Chinese Medicines & Herbs	Dried birds' nest Prepared birds' nest Chinese fine herbs Chinese general herbs Essences / Extracts

LIST OF ITEMS SELECTED FOR PRICING*(continued)*

Division	Group and Class	Examples of Items Priced
	Weight Loss Supplements & Other Pharmaceutical Products	Weight loss powder, soups and drinks
	Medical Products for External Application	Eye drops/lotions Ointments Medicated oil Medicated plasters
	Surgical Dressings	Plasters Cotton wool Bandages
	Other Medical Related Products / Equipment	Blood glucose test kits Digital thermometers
	Corrective Eyeglass & Contact Lenses	Spectacles Contact lens Solution for contact lens
	Other Therapeutic Appliances & Equipment	Blood pressure monitors
	<i>Medical & Dental Treatment</i>	
	Outpatient Medical Fees	Medical fees at polyclinics & general practitioners Medical fees for specialist services Dialysis Radiotherapy / chemotherapy
	Dental Treatment	Tooth extraction Scaling & polishing Filling Root canal treatment Orthodontic (braces) fitting costs Dentures fitting costs Crowning X-ray Teeth whitening Dental consultation fees

LIST OF ITEMS SELECTED FOR PRICING*(continued)*

Division	Group and Class	Examples of Items Priced
	Paramedical Services	X-ray Physiotherapy Chinese physician consultation fees Acupuncture Blood & urine tests Foot reflexology Health screening programmes Pap smear Ultrasound A&E consultation fees
	Hospitalisation Fees	Ward charges Daily treatment fees Surgical operation fees Diagnostic imaging & investigation fees Delivery fees (including maternity packages) Physiotherapy charges
	Intermediate and Long-term Care (ILTC) Services	Inpatient hospice care Nursing homes Home medical and nursing services care Day rehabilitation centres Community hospitals
	Medical Health Insurance	Medical health insurance
TRANSPORT		
<i>Private Road Transport</i>		
	Purchase of Motor Cars	Cars, 1,001 - 1,600cc Cars, 1,601 - 2,000cc Cars, above 2,000cc
	Purchase of Motorcycles & Scooters	Motorcycles & Scooters

LIST OF ITEMS SELECTED FOR PRICING*(continued)*

Division	Group and Class	Examples of Items Priced
	Purchase of Bicycles	Bicycles
	Spare Parts & Accessories	Car tyres Batteries Spark plugs Oil filters Brake shoes Cleaning & Maintenance products
	Fuels & Lubricants	Petrol, 98 Octane Petrol, 95 Octane Petrol, 92 Octane Engine / motor oil Diesel
	General Repairs & Maintenance of Personal Transport Equipment	Repairs & servicing of cars Car wash & grooming Repairs & servicing of motorcycles and scooters Repairs & servicing of bicycles
	Other Services in respect of Personal Transport Equipment	Driving lesson fees Driving test fees Driving licence fees Car inspection fees Parking fees Electronic road pricing charges Road taxes Car rentals Car insurance Motorcycle insurance
	<i>Public Road Transport</i>	
	Train Fares	Train fares
	Bus Fares	Bus fares
	Taxi Fares	Taxi fares

LIST OF ITEMS SELECTED FOR PRICING*(continued)*

Division	Group and Class	Examples of Items Priced
	Commuting Fares	Commuting fares to & from school & office
	Other Land Transport Services	Coach fares
	<i>Other Travel & Transport</i>	
	Air Fares	Airport taxes & air fares
	Sea Fares	Sea fares
	Other Travel & Transport n.e.c.	Moving services / removal charges Travel insurance
COMMUNICATION		
	Postal & Courier Services	Postage for letters Courier / despatch services
	Telecommunication Equipment	Telephones Mobile phones Handsfree / Blue-tooth headsets Mobile Phone chargers & accessories
	Telecommunication Services	Telephone call charges Telephone value added service charges International telephone call charges Mobile phone subscription fees Mobile phone call charges Mobile phone charges for SMS and MMS Mobile phone add-on-services charges Prepaid calling cards Internet subscription fees Internet usage charges Bundled packages for fixed line, mobile and broadband services

LIST OF ITEMS SELECTED FOR PRICING*(continued)*

Division	Group and Class	Examples of Items Priced
RECREATION & CULTURE		
<i>Recreation & Entertainment</i>		
	Audio-visual, Photographic & Information Processing Equipment	Television sets Hi-fi and stereophonic sound systems Digital cameras Camcorders Memory cards Dry cabinets Tripods Personal computers & laptops Tablet computers Printers Monitors Mouse Computer software (including software games) Calculators Sound cards Pre-recorded CDs/ DVDs Thumbdrives General servicing of televisions
	Pets & Other Recreational Goods	Pianos Guitars Violins Tuning of pianos Sports goods Sports wear Indoor games Electronic / video games Toys Potted plants Cut flowers Flower / fruit bouquets Artificial flowers, flower pots/plates Aquarium fishes Food for pets

LIST OF ITEMS SELECTED FOR PRICING*(continued)*

Division	Group and Class	Examples of Items Priced
	Pets & Other Recreational Goods <i>(continued)</i>	Dog's collars Equipment and accessories for fishes Veterinary charges / treatment fees for pets Grooming services for pets
	Recreational & Cultural Services	Admission charges to cinemas Admission charges to concert halls Admission charges to games & sports Admission charges to places of interest Rentals of sports & games & recreational facilities Rentals of facilities for social functions Coin-operated entertainment Subscription fees for country / golfing clubs Rentals of karaoke lounges & packages Fees for recreational, cultural & art lessons Sports lesson fees Subscription fees for Pay-TV Bridal Packages Photo processing
	<i>Newspapers, Books & Stationery</i>	
	Books	Books Comics Dictionaries Travel Guides
	Newspapers	Newspapers (including electronic subscription)
	Magazines	Magazines & periodicals
	Stationery & Art Materials	Exercise books & writing pads Envelopes Copy papers Art papers Pencils(including lead refills) Pens (including refills) Greeting cards

LIST OF ITEMS SELECTED FOR PRICING*(continued)*

Division	Group and Class	Examples of Items Priced
	Stationery & Art Materials <i>(continued)</i>	Files Printer cartridges Highlighters
	<i>Holiday Expenses</i>	
	Hotels	Room charges at overseas hotels Room charges at local hotels
	Other Accommodation Services	Rentals of bungalows & chalets
	Package Holidays (Including Free and Easy Packages)	Packaged and non-packaged tours
EDUCATION		
	<i>Tuition & Other Fees</i>	
	General, Vocational & Higher Education	Playgroup fees Childcare centre fees Kindergarten fees (including nursery) Primary school miscellaneous fees Secondary & junior colleges school & miscellaneous fees Course fees at Institute of Technical Education Polytechnics tuition fees University tuition fees (including Master courses) Course fees at other private institutions Examination fees
	Other Educational Courses	Academic subjects course fees Computer course fees Commercial course fees Enrichment course fees Music course fees (including music theory) English course fees Mandarin course fees Japanese course fees Other language course fees: French, German & Korean)

LIST OF ITEMS SELECTED FOR PRICING*(continued)*

Division	Group and Class	Examples of Items Priced
	<i>School Textbooks & Related Study Guides</i>	
	School Textbooks & Reference Books	School textbooks & reference books
	Assessment Books & Papers	Assessment books / papers
	MISCELLANEOUS GOODS & SERVICES	
	<i>Personal care</i>	
	Hairdressing & Salons	Haircut Hair colouring/ highlighting Permanent wave Hair treatment Rebonding / straightening Hair styling
	Personal Grooming & Beauty Treatment	Facial treatment Slimming treatment Manicure & pedicure Spa treatment (including body massage) Eyebrow shaping Waxing
	Electric Appliances for Personal Care	Electric shavers Hairdryers
	Other Appliances, Articles & Products for Personal Care	Perfumes & colognes Deodorants & body sprays Aromatherapy products Face cream & cleansing products Face powder Eye cream & make-ups Lipsticks Nail polishes & removers Hand & body lotions Suntan lotions & sunblock Talcum powder

LIST OF ITEMS SELECTED FOR PRICING*(continued)*

Division	Group and Class	Examples of Items Priced
	Other Appliances, Articles & Products for Personal Care <i>(continued)</i>	Shampoos Hair cream Hairstyling products Hair dyes & colourants Hair accessories Toilet soaps Shower foams Toothpastes Toothbrushes Dental flosses Razors Sanitary napkins Diapers Toilet papers Tissue papers Facial cottons Nail clippers
	<i>Alcoholic Drinks & Tobacco</i>	
	Spirits	Brandy Whisky Liqueur Tonic wine Vodka
	Wine	Wine
	Beer (Including Stout)	Beer Stout
	Cigarettes	Cigarettes
	<i>Personal Effects</i>	
	Jewellery, Clocks & Watches	Watches Costume jewellery

LIST OF ITEMS SELECTED FOR PRICING*(continued)*

Division	Group and Class	Examples of Items Priced
	Travel Goods & Other Carriers of Personal Effects	Women's handbags Wallets & purses Suitcases Pouches School bags Credit card holders & passport cases
	Articles for Children & Babies	Baby prams & strollers Children's car seats
	Other Personal Articles	Umbrellas Sunglasses
	<i>Other Miscellaneous Expenditure</i>	Student care fees Term-life insurance Loan insurance Bank charges Subscription fees for trade unions, clubs & associations Passport fees Legal service fees Photocopying charges Overdue charges for late return of library books Identity card registration fees

SINGAPORE DEPARTMENT OF STATISTICS INFORMATION DISSEMINATION SERVICES

Statistics Singapore Website

The *Statistics Singapore Website* was launched by the Singapore Department of Statistics (DOS) in January 1995. Internet users can access the website by connecting to:

<http://www.singstat.gov.sg>

Key Singapore statistics are available via the following sections:

- **Statistics**
which provides access to the latest statistical findings of DOS as well as statistics compiled by Research and Statistics Units (RSUs) in ministries and statutory boards.
- **News**
which provides a listing of the news released by DOS and RSUs.
- **Publications**
which presents the latest editions of DOS' publications, papers and articles.
- **Browse by Themes**
which presents official statistics compiled by DOS and RSUs in the various ministries and statutory boards according to themes. Within each theme, relevant statistics and related press releases, publications and references are provided.

Statistical resources are available via:

- **Publication and Papers**
which lists the latest editions of publications released by DOS according to statistical domains at <http://www.singstat.gov.sg/publications/publications-and-papers>. All softcopy DOS publications are available for free downloading. Statistical tables of DOS publications in Excel format are also available.
- **Advance Release Calendar**
which provides a six months ahead advance release calendar of key statistical indicators.

The website also provides a convenient gateway to international statistical websites under the "Methodologies & Standards" section:

- **Guide to International Statistics**
which provides hyperlinks to international databases and classifications, as well as websites of international bodies and other national statistical offices.
- **IMF Dissemination Standards Bulletin Board**
which provides metadata about Singapore's key indicators in the real, fiscal, financial and external sectors, including dissemination practices and information about pre-release access of current indicators.

SingStat Express

SingStat Express is a personalised data delivery service which sends the latest press releases, notices of publication, newsletter, occasional and information papers to subscribers via email. SMS alert service is also available to local users. Subscription details are available from the *Statistics Singapore Website* (<http://www.singstat.gov.sg/express>).

SINGAPORE DEPARTMENT OF STATISTICS
INFORMATION DISSEMINATION SERVICES (*cont'd*)

Really Simple Syndication

Really Simple Syndication (RSS) is an easy way to stay updated on the latest statistical news released via the *Statistics Singapore Website*. The SingStat RSS feed delivers statistical news highlights and hyperlinks to the source documents whenever the updates are posted. More information is available at [http://www.singstat.gov.sg/services/really-simple-syndication-\(rss\)](http://www.singstat.gov.sg/services/really-simple-syndication-(rss)).

SingStat Mobile App

SingStat Mobile App provides users with ready access to the latest key Singapore official statistics through their mobile devices while on the go. Users may visualize data for the latest periods with some 200 charts of commonly used statistics from 25 data categories. The app is available for downloading in iOS and Android devices. More information is available at <http://www.singstat.gov.sg/services/singstat-mobile-app>.

SingStat Table Builder

The *SingStat Table Builder* contains statistical data series on the Singapore economy and population for users to create customised data tables, plot graphs and charts and export them in different file formats. Explore data trends with this e-service at <http://www.singstat.gov.sg/tablebuilder>.


E-survey

The *E-survey* enables business organisations to complete and submit their survey forms through the internet. Using secured encryption protocols, the *E-survey* ensures that the information transmitted through the net is secured and protected. The system features online helps and validation checks to assist respondents in completing their survey forms. With the *E-survey*, respondents do away with the tedious paper work and manual tasks of mailing or faxing their survey returns to the Department.

Statistical Enquiries and Feedback

If you have any statistical enquiries or comment or suggestions on our statistical publications and electronic services, you are welcomed to:

 E-mail us at **info@singstat.gov.sg**

 Fax to us at **(65) 6332-7689**

 Call us at **1800-3238118* (local callers)**

(65) 6332-7738 (overseas callers)

* Calls from mobile telephone lines to 1800 local toll free number may be subject to mobile airtime charges as imposed by the relevant mobile service provider.