



DEPARTMENT OF STATISTICS, SINGAPORE
PRESS RELEASE

**Retail Sales Index
Catering Trade Index
Apr 2008**

Highlights

Retail Sales

Retail sales in Apr 2008 fell by 4.0% over the previous month. Excluding motor vehicles, the sales declined by 7.7%.

After seasonal adjustment, retail sales rose by 4.0% over the previous month. Excluding motor vehicles, the sales declined by 3.4%.

On a year-on-year basis, retail sales rose by 7.5% over a year ago. Excluding motor vehicles, the sales rose by 7.7%. Adjusted for prices, the overall sales volume rose by 1.7%.

Chart 1 Retail Sales Index at Current Prices
(2005=100)

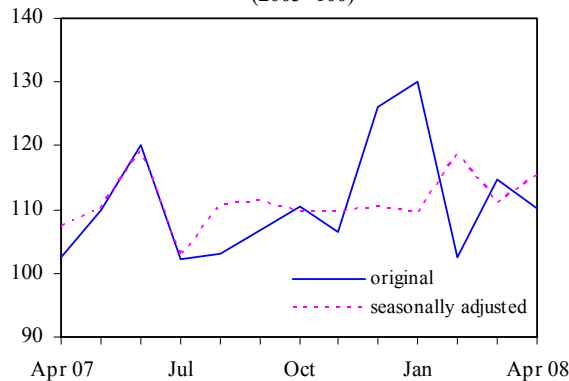


Chart 2 Retail Sales Index at Constant Prices
(2005=100)

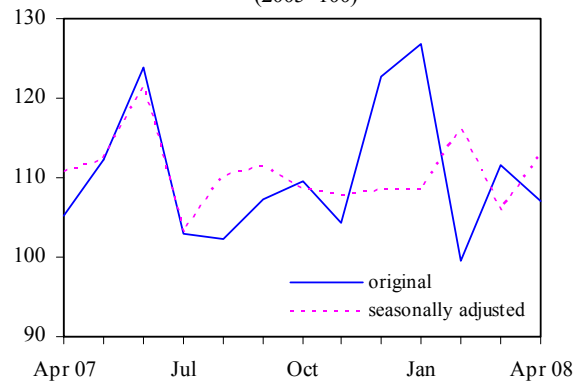


Chart 3 Retail Sales Index at Current Prices
(excl Motor Vehicles) (2005=100)

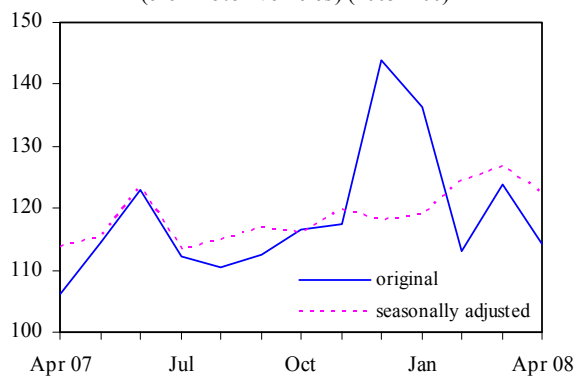
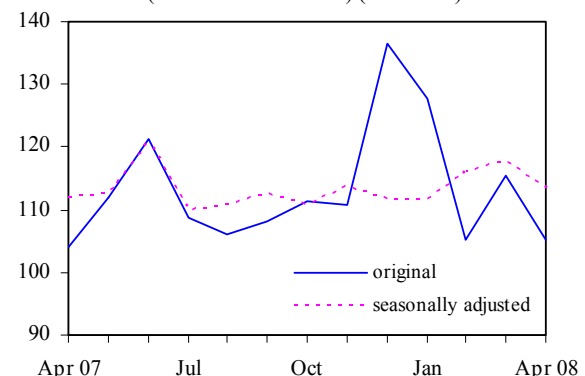


Chart 4 Retail Sales Index at Constant Prices
(excl Motor Vehicles) (2005=100)



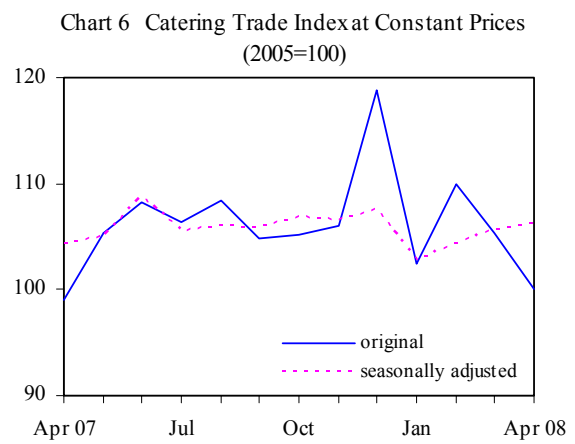
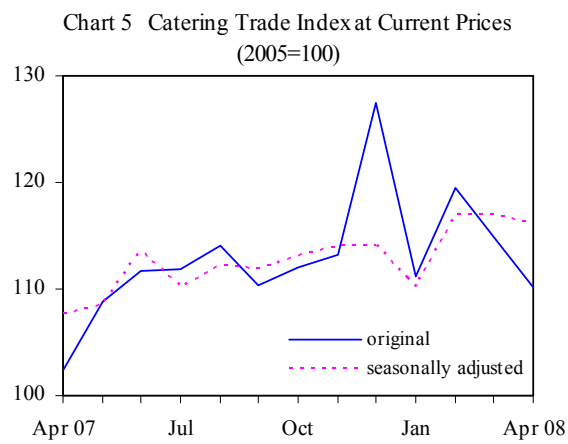
Highlights

Catering Trade

Catering trade fell by 4.2% in Apr 2008 over Mar 2008 with lower receipts in all sectors.

After seasonal adjustment, catering trade declined marginally by 0.7% over the previous month.

On a year-on-year basis, catering trade increased by 7.7% over a year ago. After removing price effect, the catering trade rose by 1.0%.



Retail sales

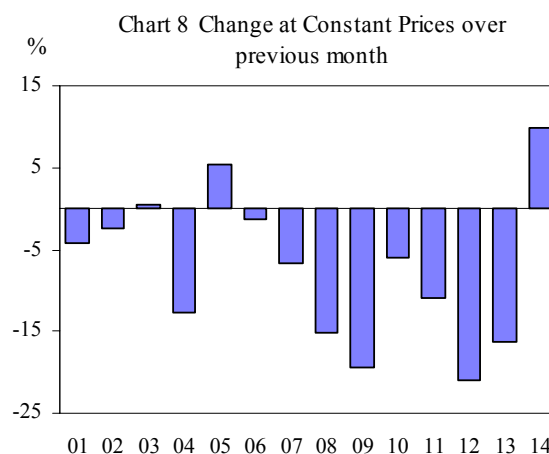
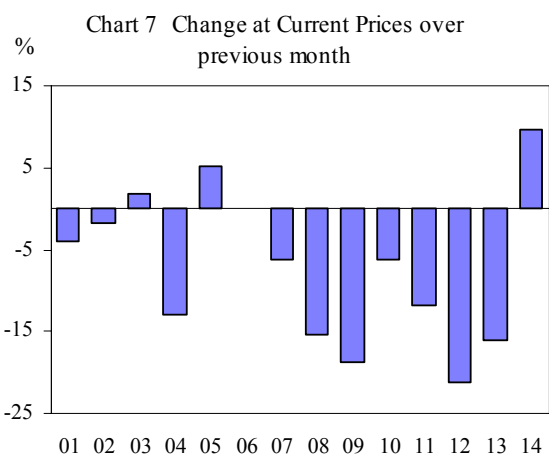
Change over previous month

Most of the retail sectors reported lower activities in Apr 2008 compared to Mar 2008.

Sales of telecommunications apparatus & computers, furniture & household equipment, optical goods & books and wearing apparel & footwear declined by 15.5% to 21.1% after their strong growths in the previous month. Food & beverages, watches & jewellery, medical goods & toiletries and recreational goods also reported lower receipts of 6.2% to 12.8%.

In contrast, sales of motor vehicles and provision & sundry shops rose by 5.1% and 1.8% respectively while petrol service stations held its level.

The total retail sales value in Apr 2008 was estimated at \$2,778.3 million compared to \$2,894.4 million in Mar 2008.



- | | |
|-------------------------------|------------------------------------|
| 01 Department stores | 08 Wearing apparel & footwear |
| 02 Supermarkets | 09 Furniture & household equipment |
| 03 Provision & sundry shops | 10 Recreational goods |
| 04 Food & beverages | 11 Watches & jewellery |
| 05 Motor vehicles | 12 Telecomm app & computers |
| 06 Petrol service stations | 13 Optical goods & books |
| 07 Medical goods & toiletries | 14 Others |

- | | |
|-------------------------------|------------------------------------|
| 01 Department stores | 08 Wearing apparel & footwear |
| 02 Supermarkets | 09 Furniture & household equipment |
| 03 Provision & sundry shops | 10 Recreational goods |
| 04 Food & beverages | 11 Watches & jewellery |
| 05 Motor vehicles | 12 Telecomm app & computers |
| 06 Petrol service stations | 13 Optical goods & books |
| 07 Medical goods & toiletries | 14 Others |

Retail Sales

Change over corresponding month of previous year

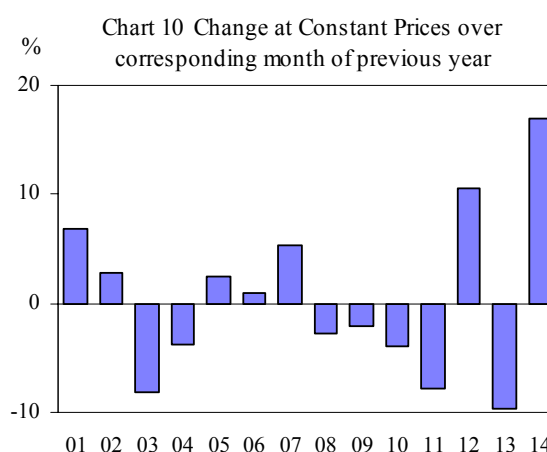
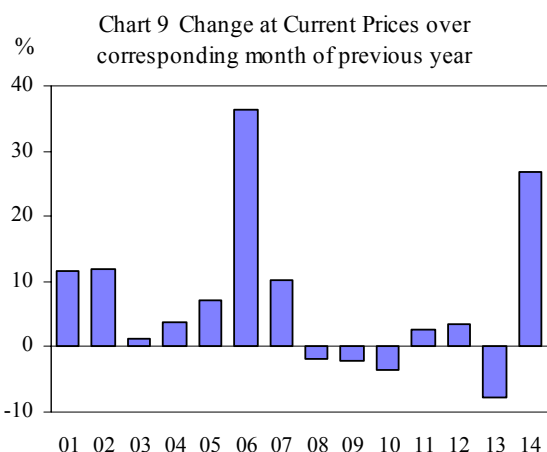
Compared to Apr 2007, sales of supermarkets, department stores and medical goods & toiletries enjoyed double-digit growths while food & beverages, telecommunications apparatus & computers and watches & jewellery rose between 2.7% and 3.7%.

Petrol service stations continued to grow strongly at 36.3%, mainly attributable to higher petrol prices. Adjusted for prices, there was only marginal growth in its sales volume over a year ago.

Motor vehicles rose by 7.1% in Apr 2008 over a year ago, reversing its downward trend since Oct 2007.

In contrast, optical goods & books, recreational goods, furniture & household equipment and wearing apparel & footwear recorded lower sales over a year ago.

After removing price effect, the volume of retail sales rose by 1.7% over a year ago. Excluding motor vehicles, the volume rose by 1.2%.



- | | |
|-------------------------------|------------------------------------|
| 01 Department stores | 08 Wearing apparel & footwear |
| 02 Supermarkets | 09 Furniture & household equipment |
| 03 Provision & sundry shops | 10 Recreational goods |
| 04 Food & beverages | 11 Watches & jewellery |
| 05 Motor vehicles | 12 Telecomm app & computers |
| 06 Petrol service stations | 13 Optical goods & books |
| 07 Medical goods & toiletries | 14 Others |

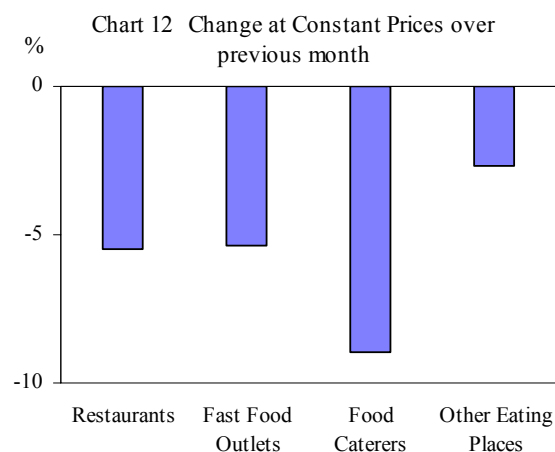
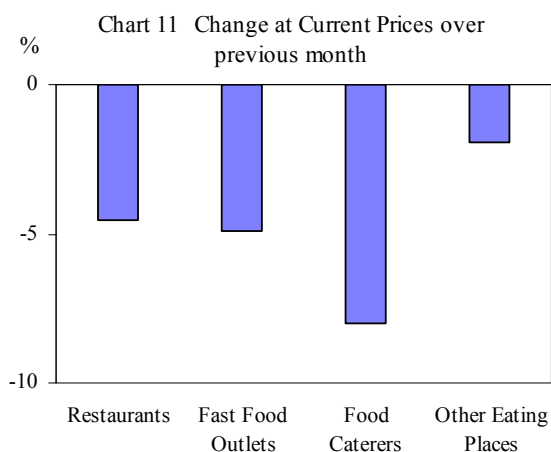
- | | |
|-------------------------------|------------------------------------|
| 01 Department stores | 08 Wearing apparel & footwear |
| 02 Supermarkets | 09 Furniture & household equipment |
| 03 Provision & sundry shops | 10 Recreational goods |
| 04 Food & beverages | 11 Watches & jewellery |
| 05 Motor vehicles | 12 Telecomm app & computers |
| 06 Petrol service stations | 13 Optical goods & books |
| 07 Medical goods & toiletries | 14 Others |

Catering Trade

Change over previous month

Turnover at restaurants and fast food outlets declined by 4.5% and 4.9% respectively in Apr 2008 compared to the previous month. Food caterers and other eating places (such as cafes and canteens) also reported lower sales of 8.0% and 2.0%.

Total value of catering trade in Apr 2008 was estimated at \$390.1 million compared to \$406.7 million in the previous month.



Change over corresponding month of previous year

On a year-on-year basis, receipts of restaurants and fast food outlets rose by 10.5% and 6.9% respectively. Sales of food caterers rose by 9.4% while those of other eating places rose by 4.9%. The increase was partly due to higher food prices.

After removing the price effect, the volume of catering trade rose by 1.0%.

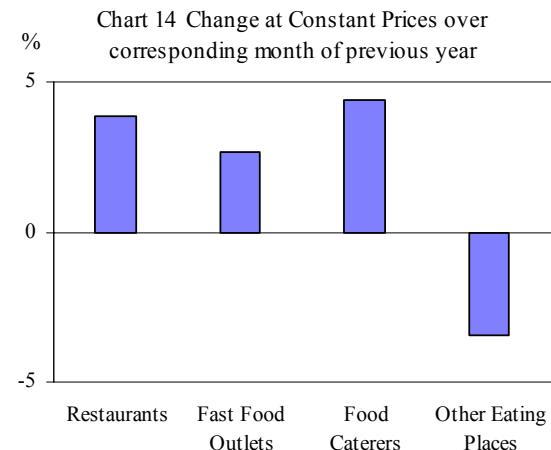
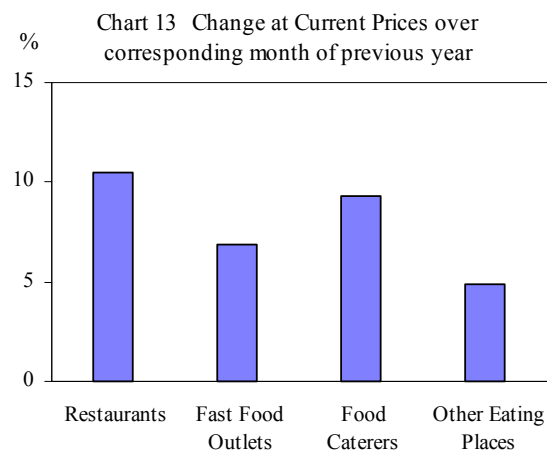


Chart 15 Retail Sales Index by Retail Sectors

Index at Current Prices

Index at Constant Prices



— original
- - - seasonally adjusted

— original
- - - seasonally adjusted

Chart 15 (Cont'd) Retail Sales Index by Retail Sectors

Index at Current Prices

Index at Constant Prices



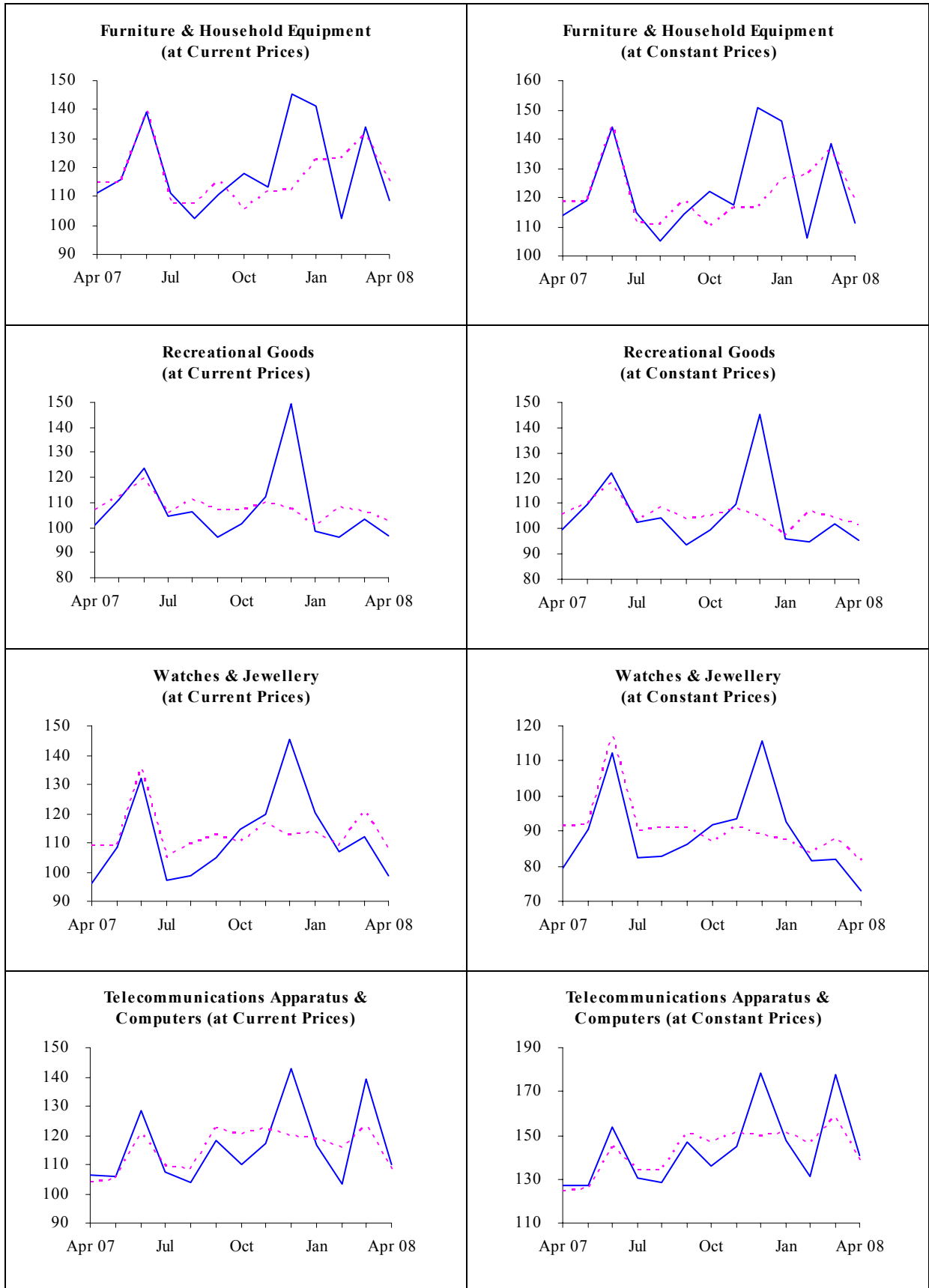
— original
- - - seasonally adjusted

— original
- - - seasonally adjusted

Chart 15 (Cont'd) Retail Sales Index by Retail Sectors

Index at Current Prices

Index at Constant Prices



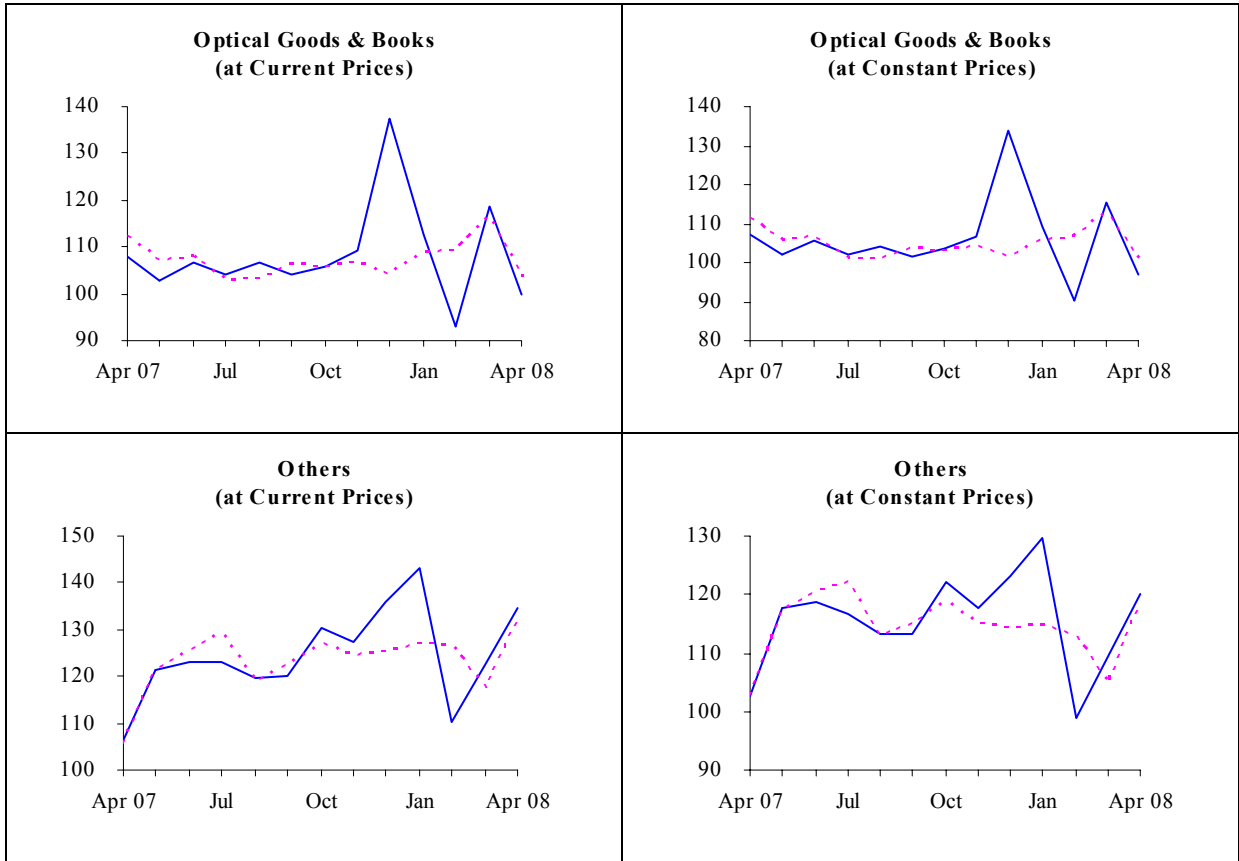
— original
- - - seasonally adjusted

— original
- - - seasonally adjusted

Chart 15 (Cont'd) Retail Sales Index by Retail Sectors

Index at Current Prices

Index at Constant Prices



— original
- - - seasonally adjusted

— original
- - - seasonally adjusted

Chart 16 Catering Trade Index by Catering Sectors

Index at Current Prices

Index at Constant Prices



— original
 seasonally adjusted

— original
 seasonally adjusted

Table 1 Retail Sales Index (2005=100)

Activity	Weights	Index at Current Prices			% Change at Current Prices		% Change at Constant Prices	
		Apr 07	Mar 08	Apr 08	Apr 08 / Apr 07	Apr 08 / Mar 08	Apr 08 / Apr 07	Apr 08 / Mar 08
Total	10,000	102.4	114.7	110.1	7.5	-4.0	1.7	-4.1
Total (excl Motor Vehicles)	6,551	106.0	123.8	114.2	7.7	-7.7	1.2	-8.7
Department Stores	1,322	103.8	120.7	115.9	11.7	-4.0	6.9	-4.3
Supermarkets	411	115.0	130.9	128.6	11.8	-1.8	2.8	-2.4
Provision & Sundry Shops	536	113.8	113.0	115.0	1.1	1.8	-8.2	0.5
Food & Beverages	200	95.1	113.2	98.7	3.7	-12.8	-3.8	-12.8
Motor Vehicles	3,449	95.6	97.4	102.4	7.1	5.1	2.6	5.4
Petrol Service Stations	456	107.6	146.5	146.7	36.3	0.1	0.9	-1.3
Medical Goods & Toiletries	332	100.5	118.3	110.8	10.2	-6.3	5.4	-6.8
Wearing Apparel & Footwear	574	107.3	124.7	105.4	-1.7	-15.5	-2.8	-15.2
Furniture & Household Equipment	755	111.1	133.7	108.7	-2.2	-18.7	-2.1	-19.3
Recreational Goods	190	100.7	103.5	97.0	-3.7	-6.2	-3.9	-6.1
Watches & Jewellery	607	96.1	111.8	98.7	2.7	-11.7	-7.9	-10.9
Telecommunications Apparatus & Computers	366	106.2	139.2	109.8	3.4	-21.1	10.5	-20.9
Optical Goods & Books	344	108.0	118.7	99.7	-7.7	-16.0	-9.7	-16.2
Others	458	106.2	122.6	134.6	26.7	9.7	17.0	9.8

Table 2 Catering Trade Index (2005=100)

Activity	Weights	Index at Current Prices			% Change at Current Prices		% Change at Constant Prices	
		Apr 07	Mar 08	Apr 08	Apr 08 / Apr 07	Apr 08 / Mar 08	Apr 08 / Apr 07	Apr 08 / Mar 08
Total	1,000	102.3	114.9	110.2	7.7	-4.2	1.0	-5.0
Restaurants	360	96.2	111.3	106.3	10.5	-4.5	3.8	-5.5
Fast Food Outlets	136	103.3	116.1	110.4	6.9	-4.9	2.6	-5.4
Food Caterers	148	97.1	115.4	106.2	9.4	-8.0	4.4	-8.9
Other Eating Places	356	110.3	118.0	115.7	4.9	-2.0	-3.4	-2.7

Explanatory Notes

Introduction

The Retail Sales Index (RSI) and Catering Trade Index (CTI) measure the short-term performance of retail and catering trade industries based on the sales records of retail and catering establishments. Data for the compilation of the indices are primarily obtained from the results of the monthly surveys of retail and catering establishments respectively. Retail establishments refer to those selling merchandise directly to the consumers. Catering establishments are those selling prepared food and drinks for in-premises consumption or on a take-away basis. Hawkers and stallholders selling cooked food and prepared drinks are not considered as catering establishments.

The difference between the index of the current month and that of the preceding month in percentage term indicates the monthly change. To measure the annual change, the index of the current month is compared with that of the same month in the preceding year.

The RSI and CTI are presented at both current prices and constant prices. Changes in the indices at current prices measure the changes of sales values due to changes in both price and quantity. By removing the price effect, the indices at constant prices measure the changes in the volume of economic activity.

Seasonal Adjustment

Seasonal effects are observed in both the RSI and CTI as there are usually intra-year periodic variations that occur during fixed period of time. To better reflect the underlying trend of the monthly sales, both indices are seasonally adjusted to remove the seasonal effects.

Singapore Department of Statistics
13 June 2008

More data are available at SingStat website at <http://www.singstat.gov.sg/pubn/business.html#mrs>
Public inquiries on press release: Miss Tay Boon Shang at tay_boon_shang@singstat.gov.sg