



## **Retail Sales Index Food & Beverage Services Index September 2015**

### **Highlights**

#### **Retail Sales**

- Retail sales (seasonally adjusted) decreased 3.7% in September 2015 over the previous month. Excluding motor vehicles, retail sales declined 4.5%.
- Compared to September 2014, retail sales increased 4.6% in September 2015. Excluding motor vehicles, retail sales contracted by 1.4%.
- The total retail sales value in September 2015 was estimated at \$3.4 billion, higher than the \$3.2 billion in September 2014.

#### **Sales of Food & Beverage Services**

- Sales of food & beverage services (seasonally adjusted) decreased 1.6% in September 2015 over the previous month.
- Compared to the same period last year, sales of food & beverage services declined 2.7% in September 2015.
- The total sales value of food & beverage services in September 2015 was estimated at \$629 million, lower than the \$647 million in September 2014.

*Note: The year-on-year growth rate may differ from that derived using values which are rounded to the nearest billion dollars.*

## Retail Sales Index<sup>1</sup>, September 2015



% Change in Retail Sales		Month-on-Month <sup>2</sup>	Year-on-Year
	Department Stores	↓ 2.3	↑ 3.4
	Supermarkets	↑ 0.8	↑ 3.9
	Mini-marts & Convenience Stores	↓ 2.6	↓ 5.3
	Food & Beverages	↑ 1.7	↓ 0.6
	Motor Vehicles	↑ 1.0	↑ 48.3
	Petrol Service Stations	↓ 4.9	↓ 22.5
	Medical Goods & Toiletries	↓ 7.8	↑ 2.8
	Wearing Apparel & Footwear	↓ 8.8	↓ 7.5
	Furniture & Household Equipment	↓ 3.8	↓ 0.4
	Recreational Goods	↓ 10.2	↓ 8.3
	Watches & Jewellery	↓ 12.3	↓ 0.8
	Telecommunications Apparatus & Computers	↑ 1.3	↓ 1.0
	Optical Goods & Books	↓ 6.8	↓ 9.9

## Food & Beverage Services Index<sup>1</sup>, September 2015



% Change in Sales of F&B Services		Month-on-Month <sup>2</sup>	Year-on-Year
	Restaurants	↓ 1.7	↓ 7.2
	Fast Food Outlets	↑ 0.5	↑ 6.3
	Food Caterers	↓ 6.5	↑ 1.3
	Other Eating Places (e.g. Cafes)	↓ 0.4	↓ 1.9

<sup>1</sup> At current prices

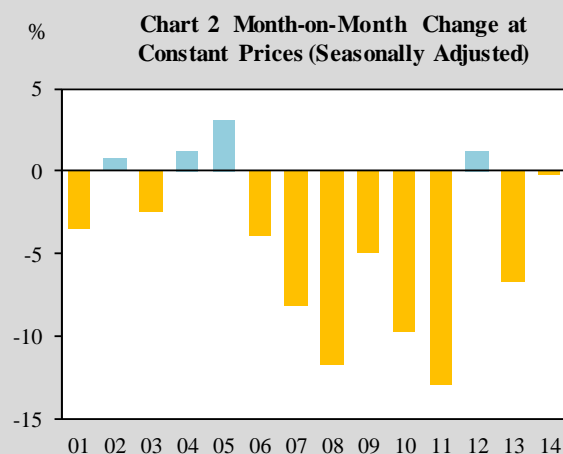
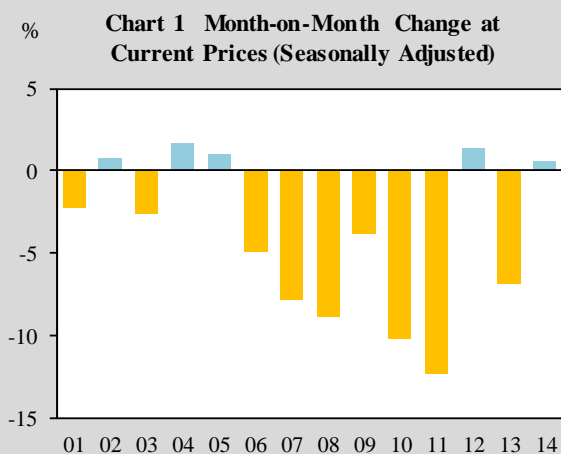
<sup>2</sup> Seasonally adjusted

## Retail Sales by Industry

### Month-on-Month Change (Seasonally Adjusted)

After seasonal adjustment, retail sales of watches & jewellery and recreational goods fell 12.3% and 10.2% respectively in September 2015 compared to August 2015. Retail sales of wearing apparel & footwear, medical goods & toiletries, optical goods & books, petrol service stations, furniture & household equipment, mini-marts & convenience stores and department stores also declined between 2.3% and 8.8% over the same period (Table 1).

In contrast, retail sales of food & beverages, telecommunications apparatus & computers, motor vehicles and supermarkets grew between 0.8% and 1.7% in September 2015 compared to August 2015.



- 01 Department Stores
- 02 Supermarkets
- 03 Mini-marts & Convenience Stores
- 04 Food & Beverages
- 05 Motor Vehicles
- 06 Petrol Service Stations
- 07 Medical Goods & Toiletries

- 08 Wearing Apparel & Footwear
- 09 Furniture & Household Equipment
- 10 Recreational Goods
- 11 Watches & Jewellery
- 12 Telecommunications Apparatus & Computers
- 13 Optical Goods & Books
- 14 Others

## Retail Sales by Industry

### Year-on-Year Change

Retailers of motor vehicles recorded an increase in sales of 48.3% in September 2015 over September 2014. Retail sales of supermarkets, department stores and medical goods & toiletries also grew between 2.8% and 3.9% over the same period.

On the other hand, retail sales of petrol service stations fell 22.5% in September 2015. Retail sales of optical goods & books, recreational goods, wearing apparel & footwear, mini-marts & convenience stores, telecommunications apparatus & computers, watches & jewellery, food & beverages and furniture & household equipment declined between 0.4% and 9.9% compared to September 2014.

Chart 3 Year-on-Year Change at Current Prices

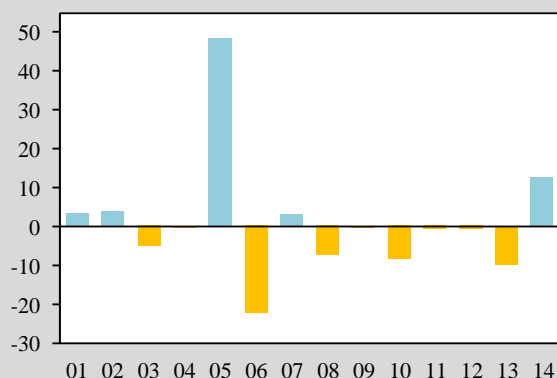
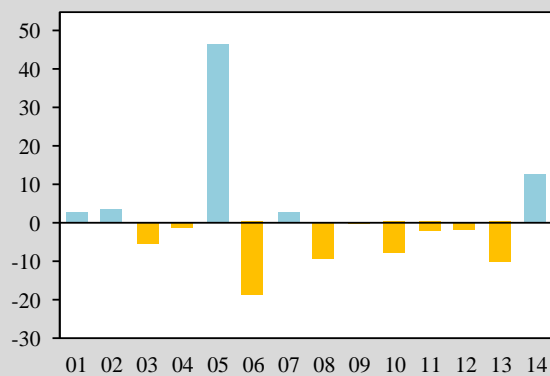


Chart 4 Year-on-Year Change at Constant Prices



01 Department Stores

02 Supermarkets

03 Mini-marts & Convenience Stores

04 Food & Beverages

05 Motor Vehicles

06 Petrol Service Stations

07 Medical Goods & Toiletries

08 Wearing Apparel & Footwear

09 Furniture & Household Equipment

10 Recreational Goods

11 Watches & Jewellery

12 Telecommunications Apparatus & Computers

13 Optical Goods & Books

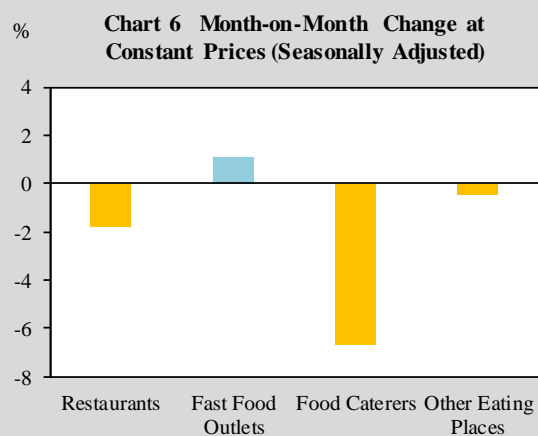
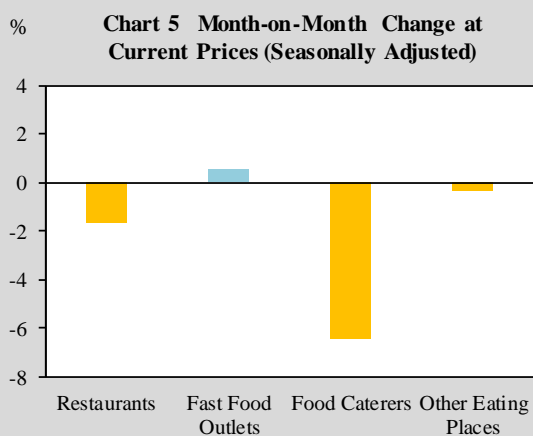
14 Others

## Sales of Food & Beverage Services by Industry

### Month-on-Month Change (Seasonally Adjusted)

After seasonal adjustment, turnover of food caterers, restaurants and other eating places (such as cafes) decreased between 0.4% and 6.5% in September 2015 compared to August 2015 (Table 2).

Conversely, food caterers registered an increase of 0.5% in receipts.

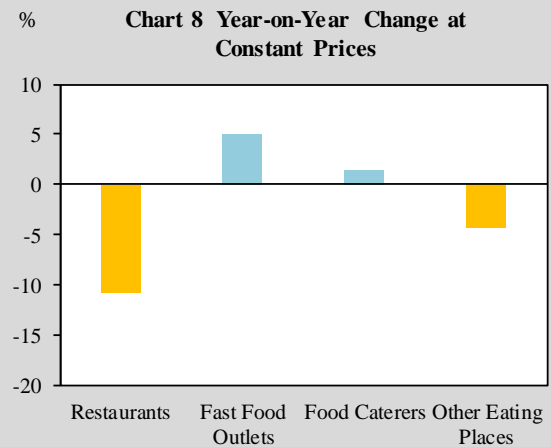
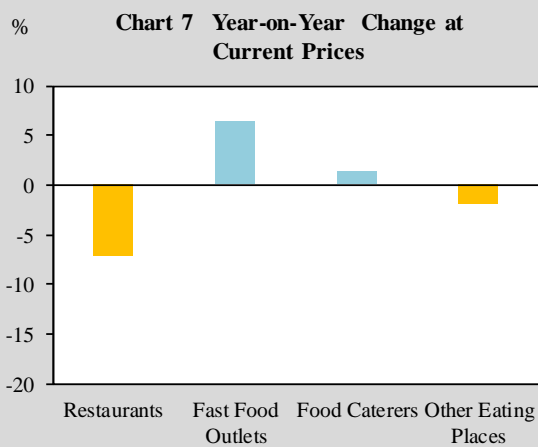


## Sales of Food & Beverage Services by Industry

### Year-on-Year Change

Compared to September 2014, turnover of restaurants and other eating places declined 7.2% and 1.9% respectively in September 2015.

On the other hand, turnover of fast food outlets and food caterers grew by 6.3% and 1.3% respectively during the same period.



## Retail Sales Index and Food &amp; Beverage Services Index, September 2015

<b>Table 1 Percentage Change of Retail Sales Index (2014=100)</b>									
Industry	Month-on-Month Change (Seasonally Adjusted)				Year-on-Year Change				
	at Current Prices		at Constant Prices		at Current Prices		at Constant Prices		
	Aug 15/ Jul 15	Sep 15/ Aug 15	Aug 15/ Jul 15	Sep 15/ Aug 15	Aug 15/ Aug 14	Sep 15/ Sep 14	Aug 15/ Aug 14	Sep 15/ Sep 14	
<b>Total</b>	<b>5.4</b>	<b>-3.7</b>	<b>6.1</b>	<b>-4.1</b>	<b>6.6</b>	<b>4.6</b>	<b>7.2</b>	<b>4.1</b>	
Total (excl Motor Vehicles)	4.2	-4.5	5.1	-5.4	1.9	-1.4	2.6	-1.9	
Department Stores	3.4	-2.3	4.1	-3.5	5.1	3.4	5.5	2.4	
Supermarkets	1.9	0.8	1.4	0.8	3.0	3.9	2.6	3.4	
Mini-marts & Convenience Stores	1.3	-2.6	0.9	-2.5	-3.1	-5.3	-3.8	-5.5	
Food & Beverages	-1.5	1.7	-1.6	1.2	-8.0	-0.6	-8.6	-1.5	
Motor Vehicles	12.1	1.0	11.4	3.1	43.9	48.3	43.8	46.5	
Petrol Service Stations	-3.7	-4.9	-0.8	-3.9	-20.0	-22.5	-17.4	-19.1	
Medical Goods & Toiletries	3.8	-7.8	5.7	-8.2	10.7	2.8	11.4	2.7	
Wearing Apparel & Footwear	11.8	-8.8	12.1	-11.8	1.6	-7.5	3.2	-9.4	
Furniture & Household Equipment	7.1	-3.8	7.2	-4.9	3.2	-0.4	4.5	-0.3	
Recreational Goods	-1.3	-10.2	-0.6	-9.7	0.7	-8.3	0.3	-8.2	
Watches & Jewellery	6.7	-12.3	10.6	-13.0	12.5	-0.8	14.0	-2.3	
Telecommunications Apparatus & Computers	6.4	1.3	5.9	1.2	0.3	-1.0	-0.2	-1.8	
Optical Goods & Books	-0.9	-6.8	-0.9	-6.7	-11.2	-9.9	-11.7	-10.2	
Others	2.9	0.5	3.3	-0.3	6.2	12.7	7.3	12.3	

<b>Table 2 Percentage Change of Food &amp; Beverage Services Index (2014=100)</b>									
Industry	Month-on-Month Change (Seasonally Adjusted)				Year-on-Year Change				
	at Current Prices		at Constant Prices		at Current Prices		at Constant Prices		
	Aug 15/ Jul 15	Sep 15/ Aug 15	Aug 15/ Jul 15	Sep 15/ Aug 15	Aug 15/ Aug 14	Sep 15/ Sep 14	Aug 15/ Aug 14	Sep 15/ Sep 14	
<b>Total</b>	<b>3.0</b>	<b>-1.6</b>	<b>2.8</b>	<b>-1.6</b>	<b>-4.2</b>	<b>-2.7</b>	<b>-6.6</b>	<b>-5.2</b>	
Restaurants	1.6	-1.7	1.4	-1.8	-7.1	-7.2	-10.8	-10.8	
Fast Food Outlets	11.0	0.5	10.4	1.1	6.7	6.3	5.1	4.9	
Food Caterers	4.6	-6.5	4.6	-6.7	-11.3	1.3	-11.1	1.4	
Other Eating Places	1.5	-0.4	1.4	-0.5	-1.7	-1.9	-4.1	-4.3	

## Explanatory Notes

### *Introduction*

The Retail Sales Index (RSI) and Food & Beverage Services Index (FSI) measure the short-term performance of retail and food & beverage (F&B) services industries based on the sales records of retail and F&B services establishments. Sales figure refers to the value of retail goods or food & beverages sold to consumers during the month, excluding taxes on products such as Goods and Services Tax (GST), Additional Registration Fee (ARF) and Certificates of Entitlement (COE).

The RSI and FSI are presented at both current prices and constant prices. The indices at current prices measure the changes of sales values which can result from changes in both price and quantity. By removing the price effect, the indices at constant prices measure the changes in the volume of economic activity.

To reflect changes in the structure of retail trade and F&B services industries, the coverage and weighting patterns of the RSI and FSI series are revised at regular intervals. These two indices have been re-based from reference year 2010 to 2014, the sixth re-basing exercise of the series. The new RSI and FSI series (2014=100) have been released with effect from Jan 2015 report.

### *Data Collection*

Data for the compilation of the indices are primarily obtained from the results of the monthly surveys of retail and F&B services establishments respectively. Retail establishments refer to those selling merchandise directly to the consumers. F&B services establishments are those selling prepared food and drinks for in-premises consumption or on a take-away basis.

### *Index Compilation*

To derive the RSI/FSI at detailed industry level, the monthly sales for that industry is divided by the average monthly sales for the same industry in the base year. The overall RSI/FSI is then computed by combining the sales indices of the detailed industries, using the weights to measure each industry's relative importance in the overall retail/F&B services industry.

To derive the indices at constant prices, the sales indices at current prices at detailed industry level are first deflated by appropriate price indices. These component indices at constant prices are then weighted and aggregated to derive the overall indices at constant prices.

### *Seasonal Adjustment*

Seasonal effects are observed in both the RSI and FSI as there are usually intra-year periodic variations that repeat during the fixed period of time every year. To better reflect the underlying trend of the monthly sales, both indices are seasonally adjusted to remove the seasonal effects.

Singapore Department of Statistics  
13 November 2015

More data are available at SingStat website at <http://www.singstat.gov.sg/publications/publications-and-papers/services/monthly-retail-sales-and-food-beverage-service-indices>

For enquiries, please contact:

Ms Adeline Chia T (+65) 6835 8912 E Adeline\_Chia@singstat.gov.sg

Ms Tess Tan T (+65) 6835 8890 E Tess\_Tan@singstat.gov.sg