










Business Receipts Index

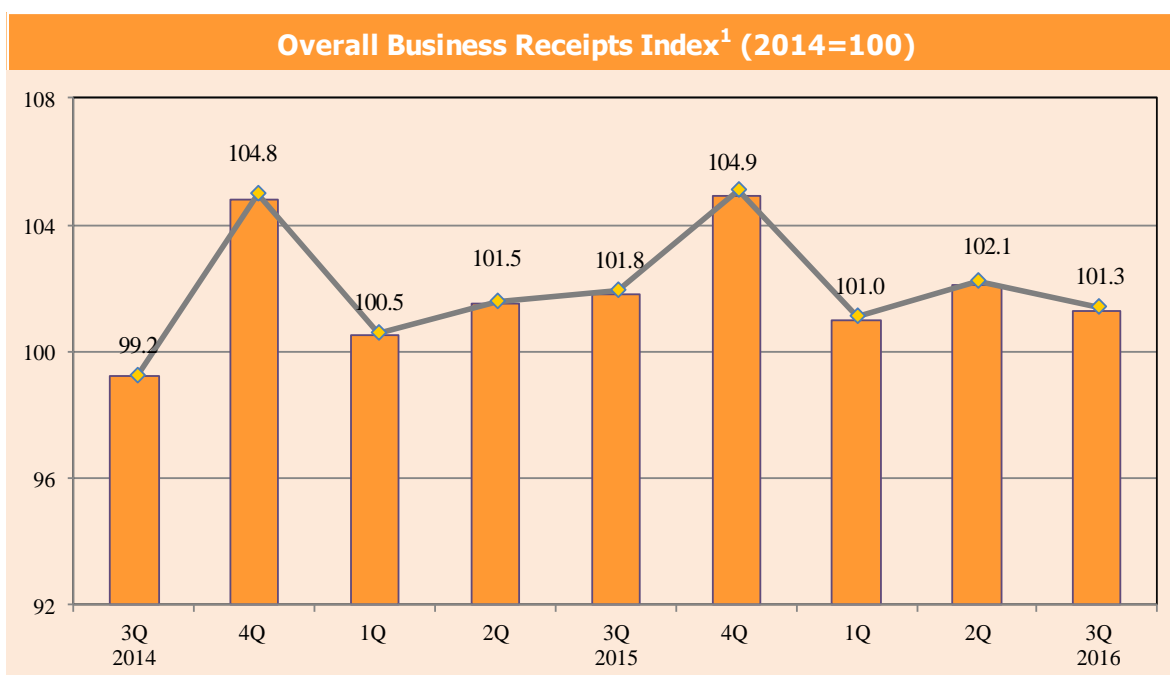
Services Industries¹

THIRD QUARTER 2016

↓ 0.7%
Quarter-on-Quarter
(non-seasonally adjusted)

↓ 0.4%
Year-on-Year

	% Change in Business Receipts	Quarter-on Quarter ²	Year-on-Year
 Transport & Storage		↓ 3.1	↓ 6.6
 Information & Communications		↓ 1.1	↑ 3.3
 Financial & Insurance		↓ 2.7	↓ 0.2
 Business Services		↓ 0.4	↓ 0.7
 Education		↑ 11.3	↑ 2.9
 Health & Social Services		↑ 1.7	↑ 9.0
 Recreation & Personal Services		↑ 2.3	↓ 2.3



¹ Excludes wholesale & retail trade and accommodation & food services

² Non-seasonally adjusted

BUSINESS RECEIPTS BY INDUSTRY

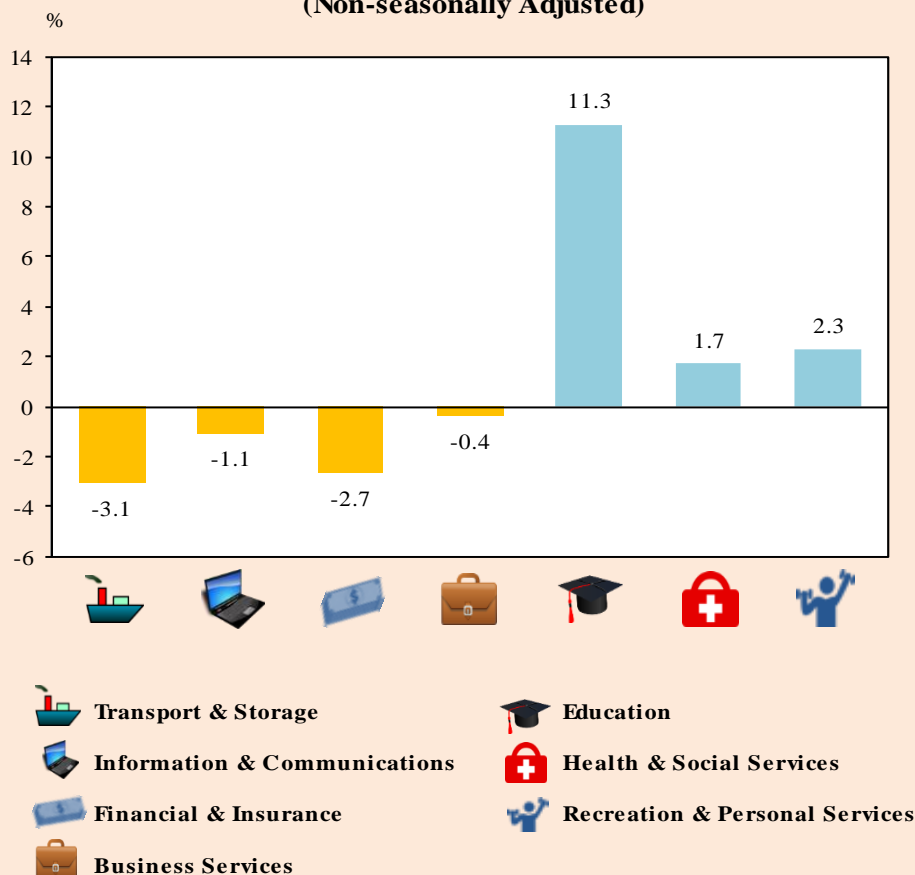
Quarter-on-Quarter Change (Non-seasonally Adjusted)

The overall services industries, excluding wholesale & retail trade and accommodation & food services, experienced a 0.7% decline in revenue in third quarter 2016 over the previous quarter.

The education services industry registered the highest growth in turnover of 11.3% (Table 1). This was followed by recreation & personal services (2.3%) and health & social services (1.7%).

On the other hand, lower turnover was recorded by transport & storage services (-3.1%), financial & insurance services (-2.7%), information & communications services (-1.1%) and business services (-0.4%).

Chart 1 Quarter-on-Quarter Change
(Non-seasonally Adjusted)



BUSINESS RECEIPTS BY INDUSTRY

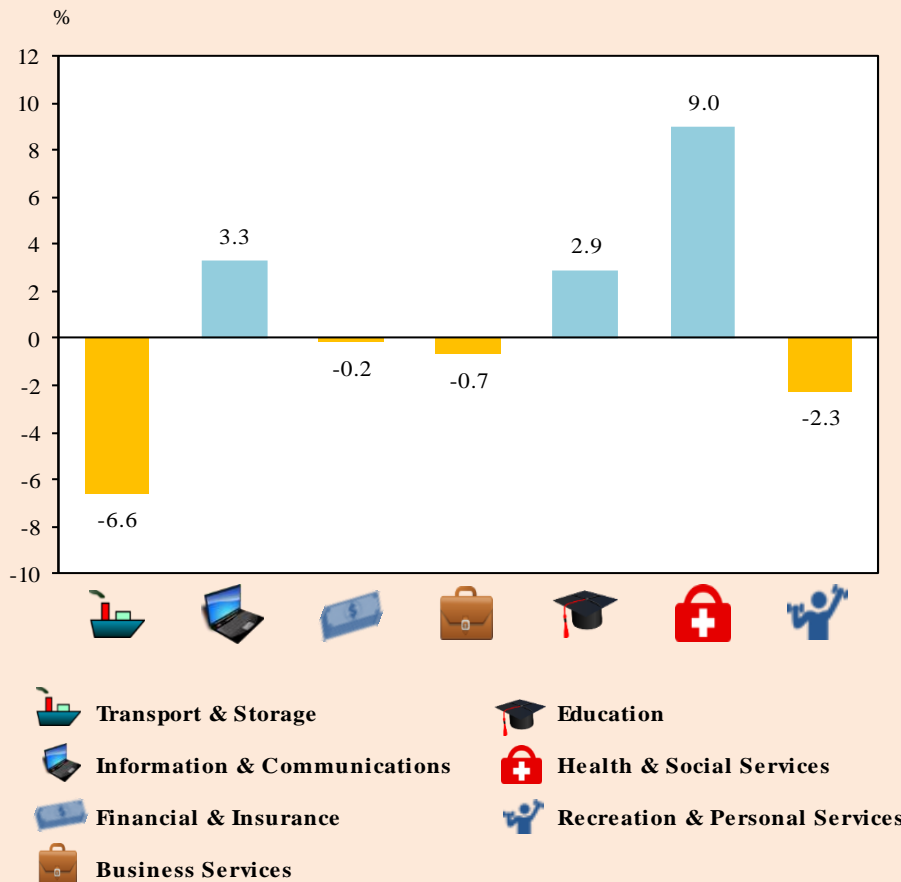
Year-on-Year Change

On a year-on-year basis, the overall business receipts fell 0.4%.

Performance was mixed among the services industries. Turnover of the health & social services grew by 9% followed by the information & communications services (3.3%) and education services industries (2.9%).

On the other hand, turnover of the transport & storage services and recreation & personal services industries declined 6.6% and 2.3% respectively. Likewise, firms in the business services and financial & insurance services industries also recorded lower turnover in third quarter 2016 compared to the same quarter last year.

Chart 2 Year-on-Year Change



Business Receipts Index, Third Quarter 2016

Table 1 Percentage Change of Business Receipts Index at Current Prices (2014=100)				
Industry	Quarter-on-Quarter Change (non-seasonally adjusted)		Year-on-Year Change	
	2Q16/ 1Q16	3Q16/2Q16	2Q16/ 2Q15	3Q16/ 3Q15
Total Services¹	1.1	-0.7	0.5	-0.4
Transport & Storage ²	0.0	-3.1	-2.1	-6.6
Information & Communications	1.1	-1.1	1.5	3.3
Financial & Insurance	-0.3	-2.7	0.4	-0.2
Business Services ³	3.8	-0.4	0.0	-0.7
Education	-9.0	11.3	5.8	2.9
Health & Social Services	1.7	1.7	7.9	9.0
Recreation & Personal Services ⁴	3.9	2.3	-2.5	-2.3

¹ Excluding wholesale & retail trade and accommodation & food services

² Comprises land transport, water transport, air transport, warehousing & support activities for transport and postal & courier activities

³ Comprises real estate activities, professional, scientific & technical and office administrative & support service activities, e.g. legal & accounting activities, activities of head offices, management consultancy activities, architectural, engineering and technical activities, rental & leasing activities, employment activities, travel agencies and security activities

⁴ Comprises arts, entertainment & recreation, membership organisations' activities (e.g. business and professional membership organisations, religious organisations and interest groups), repair of computers, personal, household goods & vehicles and other personal services activities.

Explanatory Notes

Introduction

The Business Receipts Index (BRI) for the services industries (excluding wholesale & retail trade and accommodation & food services) measures the short-term changes in the amount of business or operating receipts on a quarterly basis. The BRI is compiled at current prices.

Business or operating receipts is the income earned from business operations i.e. includes income from services rendered, sale of goods, commission fees as well as rental of premises and machinery & equipment.

To reflect the changes in the structure of the services industries over the years, the weighting pattern of the index series is revised regularly. The BRI series have been re-based from base year 2008 to 2014. The new BRI series (2014=100) has been released with effect from 1Q2015 report.

Data Collection

Data for the compilation of the index is sourced from administrative data as well as the Quarterly Survey of Services (QSS) and Survey of Quarterly National Income Estimates conducted by the department.

The 2014-based BRI is compiled based on survey and administrative records of more than 11,000 enterprises.

Index Compilation

To derive the BRI at detailed industry level, the quarterly business receipts for that industry is divided by the average quarterly business receipts for the same industry in the base year. The overall BRI is then computed by combining the indices of the detailed industries, using weights which measure each industry's relative importance in the overall services sector.

Singapore Department of Statistics

25 Nov 2016

More data are available at SingStat website at

http://www.singstat.gov.sg/publications/publications-and-papers/economy#business_receipts_index

For enquiries, please contact

Miss Loke Jia Xin **T** (+65) 6835 8915 **E** loke_jia_xin@singstat.gov.sg