



Import & Export Price Indices April 2020

IMPORT AND EXPORT PRICE INDICES, April 2020
ISSN 2591-7463

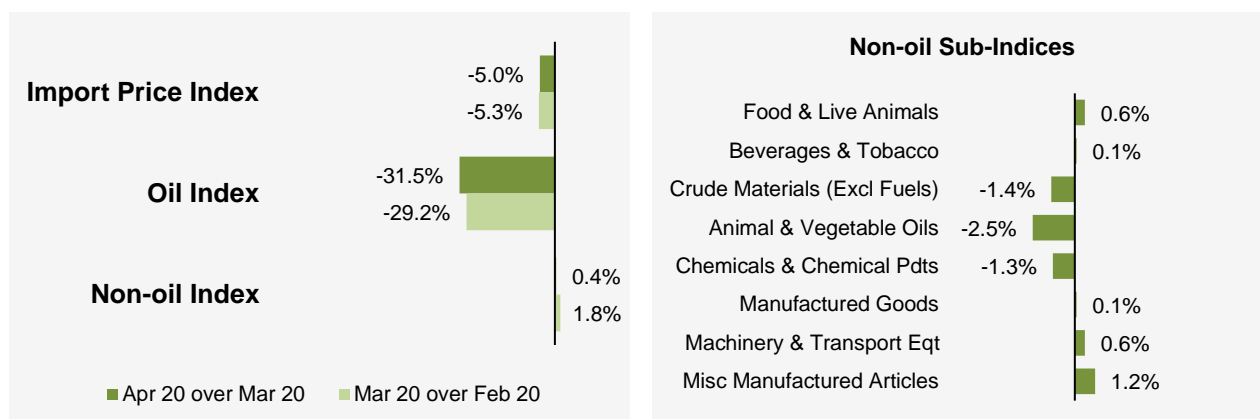
© Department of Statistics, Ministry of Trade & Industry, Republic of Singapore

Reproducing or quoting any part of this publication is permitted, provided this publication is accredited as the source. Please refer to the Statistics Singapore Website Terms of Use (<http://www.singstat.gov.sg/terms-of-use>) for more details on the conditions of use of this publication.

Statistical activities conducted by the Singapore Department of Statistics are governed by the provisions of the Statistics Act (Cap. 317). The Act guarantees the confidentiality of information collected from individuals and companies. It spells out the legislative authority and responsibility of the Chief Statistician. The Act is available in the Department's Website (www.singstat.gov.sg).

Import Price Index (2018 = 100) April 2020

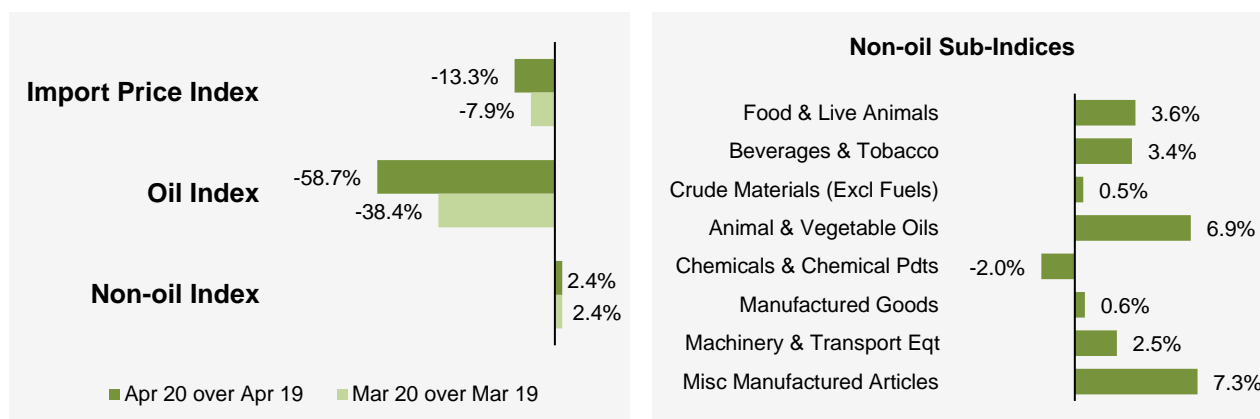
Month-on-Month Change



The Import Price Index fell 5.0% in April 2020, extending the 5.3% decrease in March 2020. The Oil index declined 31.5%, after the 29.2% decrease in the previous month. The Non-oil index rose 0.4%, following the 1.8% increase in March 2020.

For the Non-oil sub-indices, increases were led by the Miscellaneous Manufactured Products (1.2%) index due mainly to higher prices of jewellery, and the Machinery & Transport Equipment (0.6%) index. The increases were partially offset by declines led by the Crude Materials (-1.4%) and Chemicals & Chemical Products (-1.3%) indices, attributed mainly to lower prices of copper scrap and organic chemicals respectively.

Year-on-Year Change

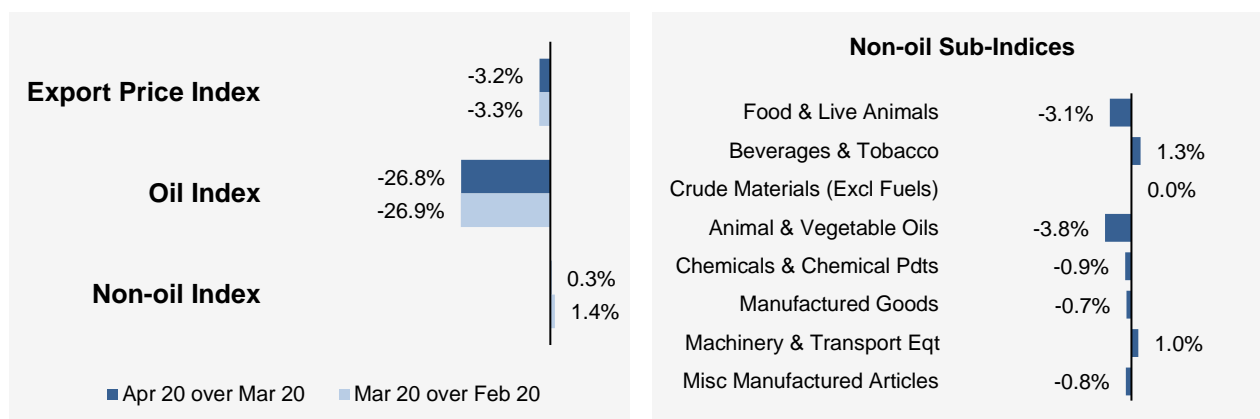


The Import Price Index fell 13.3% in April 2020 from a year ago, extending the 7.9% decrease in March 2020. The Oil index declined 58.7% while the Non-oil index rose 2.4%.

For the Non-oil sub-indices, higher prices of Miscellaneous Manufactured Articles (7.3%), Animal & Vegetable Oils (6.9%), Food & Live Animals (3.6%), Beverages & Tobacco (3.4%), Machinery & Transport Equipment (2.5%), Manufactured Goods (0.6%) and Crude Materials (0.5%) were partially moderated by lower prices of Chemicals & Chemical Products (-2.0%).

Export Price Index (2018 = 100) April 2020

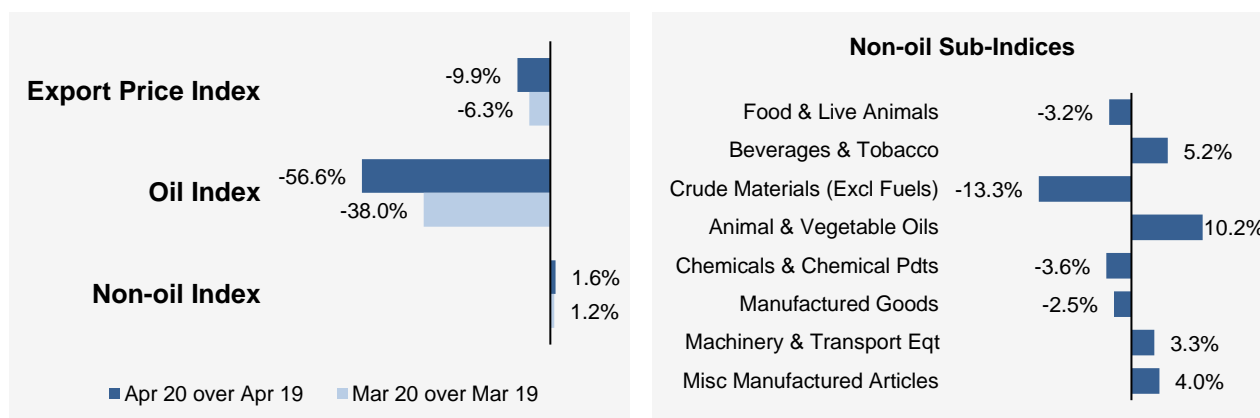
Month-on-Month Change



The Export Price Index declined 3.2% in April 2020, following the 3.3% decrease in March 2020. The Oil index fell 26.8%, extending the 26.9% decrease in the previous month. The Non-oil index increased 0.3%, after the 1.4% rise in March 2020.

For the Non-oil sub-indices, increases led by the Beverages & Tobacco (1.3%) and Machinery & Transport Equipment (1.0%) indices, due mainly to higher prices of alcoholic beverages and integrated circuits respectively, were partially offset by declines led by the Chemicals & Chemical Products (-0.9%) and Miscellaneous Manufactured Articles (-0.8%) indices.

Year-on-Year Change



The Export Price Index fell 9.9% in April 2020 from a year ago, following the 6.3% decrease in March 2020. The Oil index declined 56.6% while the Non-oil index rose 1.6%.

For the Non-oil sub-indices, higher prices of Animal & Vegetable Oils (10.2%), Beverages & Tobacco (5.2%), Miscellaneous Manufactured Articles (4.0%) and Machinery & Transport Equipment (3.3%) were partially moderated by lower prices of Crude Materials (-13.3%), Chemicals & Chemical Products (-3.6%), Food & Live Animals (-3.2%) and Manufactured Goods (-2.5%).

Technical Note

The **Import Price Index (IPI)** is used primarily as an indicator to track the price trends of imported goods into Singapore. Prices of imports, valued at cif (cost, insurance and freight) are obtained monthly from major importers. The weighting pattern of the index is derived from import statistics for 2018.

The **Export Price Index (EPI)** measures changes in the price of all exports of merchandise from Singapore, including re-exports. In general, prices are obtained from major exporters of the selected commodities. Prices used in the index computation, are the prices of goods that physically leave Singapore's main ports of export; also termed as free on board prices. The weights of the index are derived from the distribution of export by commodity in 2018.

Index Formula

The 2018-based series is compiled using the Laspeyres formula where the price and weight reference periods are aligned to the year 2018. The geometric mean formula has been adopted in the computation of unweighted elementary aggregate price indices. The arithmetic mean formula is applied in compiling indices at higher levels of aggregation where weights of specific sub-indices are available.

Measurement of Changes in Price Indices

Change over previous month compares the index of the month with that of the preceding month. Such comparisons measure the change in the price index between two consecutive months. They serve as useful short-term indicators of the price movements.

Change over same period of previous year measures change in the index over a twelve-month period. Such comparisons compare the movement in the price index between similar months in two consecutive years.

Linking the Old 2012-Based Price Index Series to the New 2018-Based Price Index Series

The IPI and EPI have been rebased from base year 2012 to base year 2018. To facilitate comparison of the historical price indices across base years, the old 2012-based series are linked to the new 2018-based series by re-scaling them via a Linked Coefficient. The Linked Coefficient is the ratio of the annual 2018-based index in 2018 to the annual 2012-based index in 2018.

Example : Linking the old Iron & Steel Index series for IPI prior to 2018, to the 2018-based Iron & Steel Index (2018=100)

1) Calculate the linked coefficient

Year	Iron & Steel Index (2012=100)	Iron & Steel Index (2018=100)	Linked Coefficient
2018	93.4	100.0	$100.0 \div 93.4 = 1.071$

2) Re-scaling the old series to the 2018-based series using the Linked Coefficient

Year	Month	Iron & Steel Index (2012=100)	Iron & Steel Index (2018=100)
2016	Dec	84.0	$84.0 \times 1.071 = 90.0$
2017	Jan	85.6	$85.6 \times 1.071 = 91.7$

Linking Method for Maintaining the Old Index Reference Period

To continue the old 2012-based index series going forward in time, re-scale the new 2018-based index series to the old base year 2012 level, via a Linked Coefficient. The Linked Coefficient is the ratio of the annual 2012-based index in 2018 to the annual 2018-based index in 2018.

Example : Linking the new 2018-based Iron & Steel Index series for IPI to the 2012-based Iron & Steel Index (2012=100)

1) Calculate the linked coefficient

Year	Iron & Steel Index (2018=100)	Iron & Steel Index (2012=100)	Linked Coefficient
2018	100.0	93.4	$93.4 \div 100.0 = 0.934$

2) Re-scaling the new series to the 2012-based series using the Linked Coefficient

Year	Month	Iron & Steel Index (2018=100)	Iron & Steel Index (2012=100)
2019	Jan	98.6	$98.6 \times 0.934 = 92.1$
2019	Feb	102.4	$102.4 \times 0.934 = 95.6$

Index Revision

The indices may be revised when late returns and amendments received from respondents are incorporated.

Dissemination of Data

The Import and Export Price Indices are available on the SingStat Website (www.singstat.gov.sg/tablebuilder). Excel tables for this month's report are available at <https://www.singstat.gov.sg/publications/economy/import-export-price-indices> or through the QR code below:



Import Price Index (2018 = 100) April 2020

Chart 1: Index

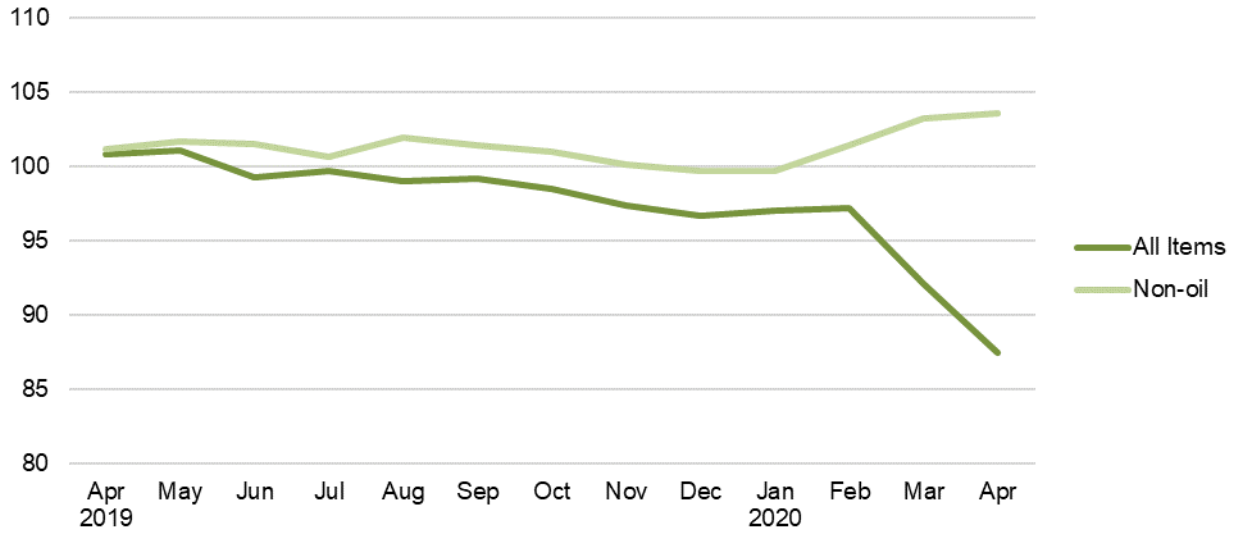


Chart 2: Month-on-Month Change

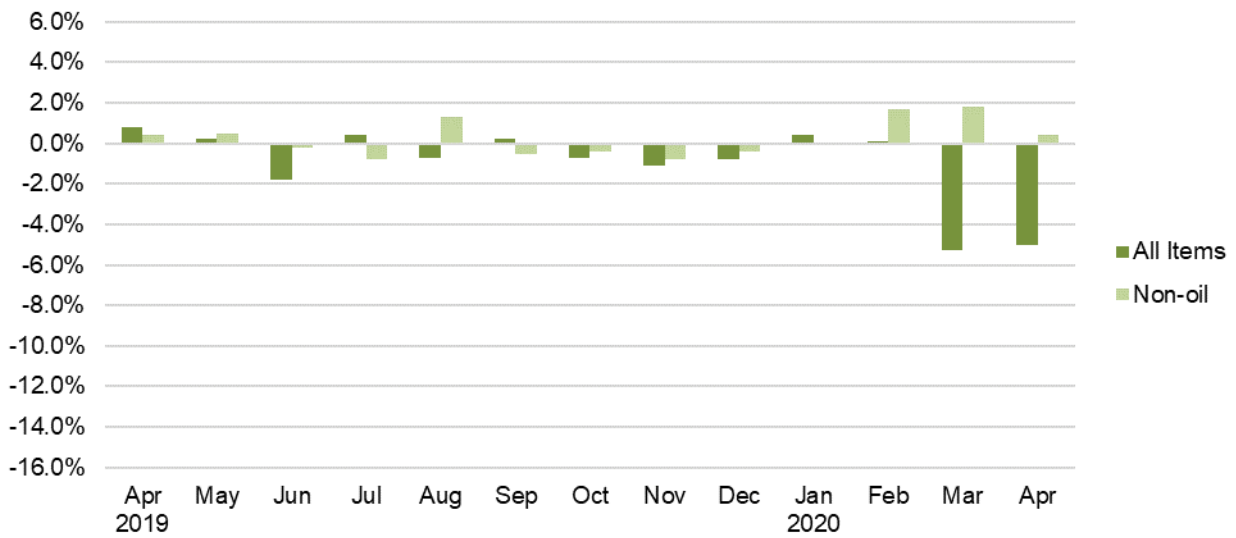
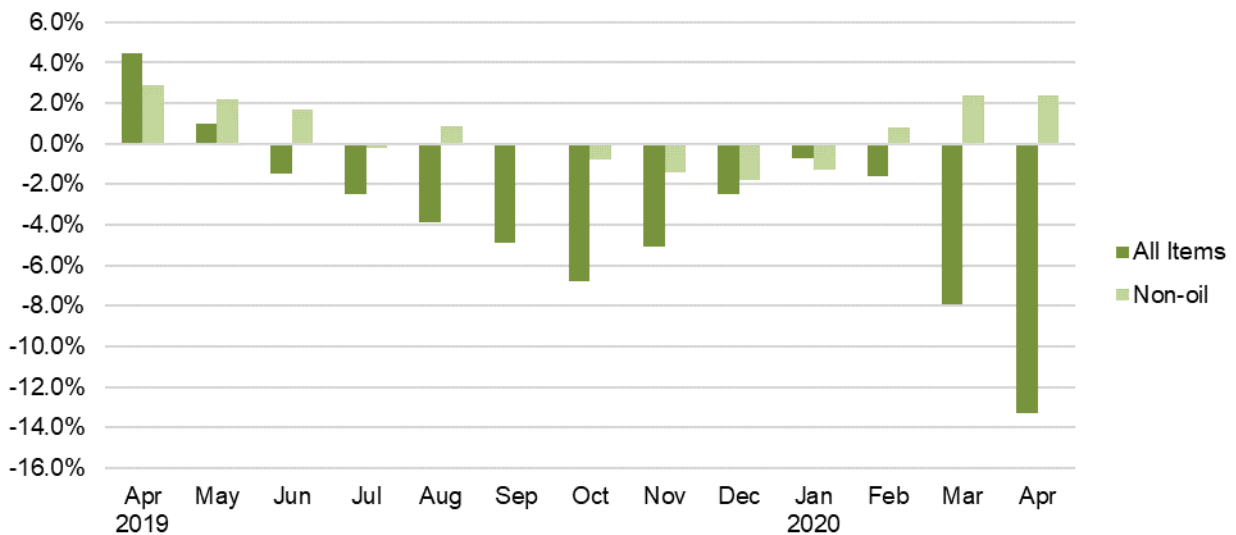


Chart 3: Year-on-Year Change



Export Price Index (2018 = 100) April 2020

Chart 4: Index

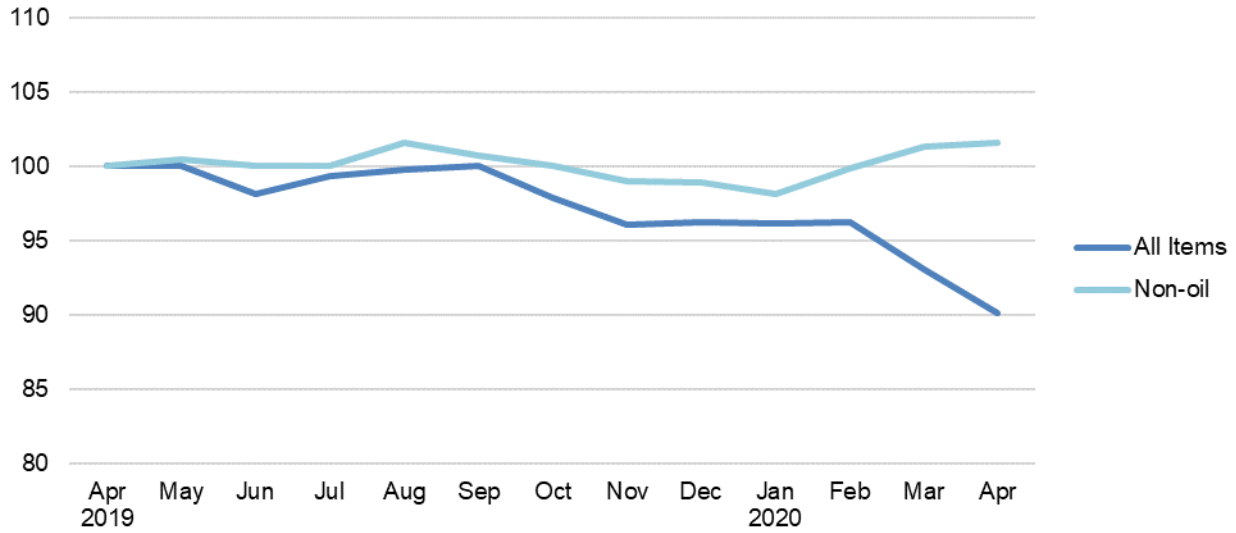


Chart 5: Month-on-Month Change

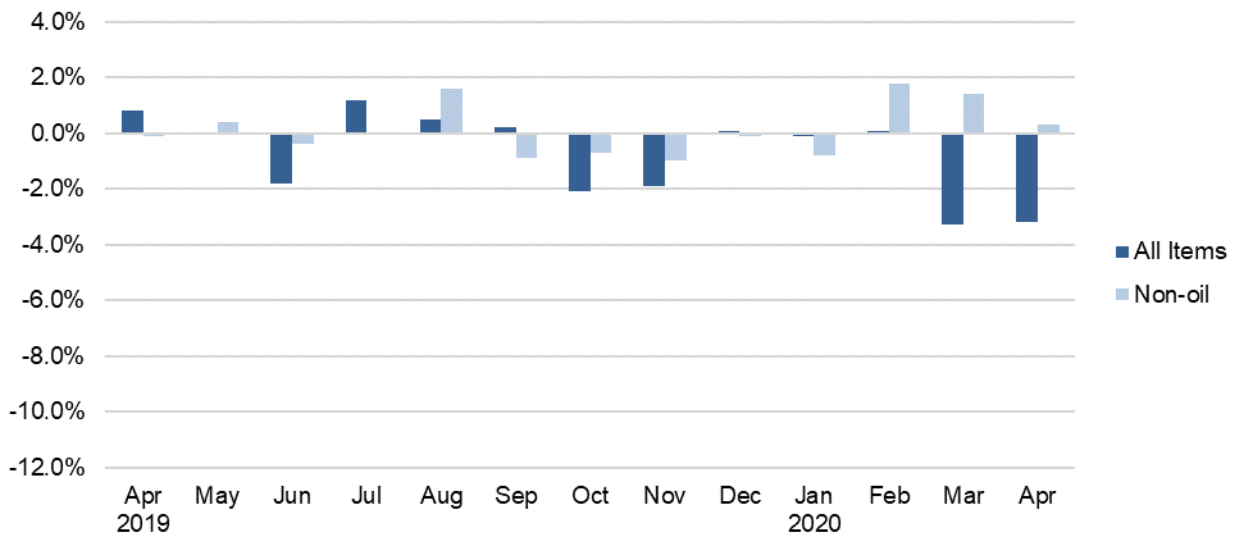


Chart 6: Year-on-Year Change

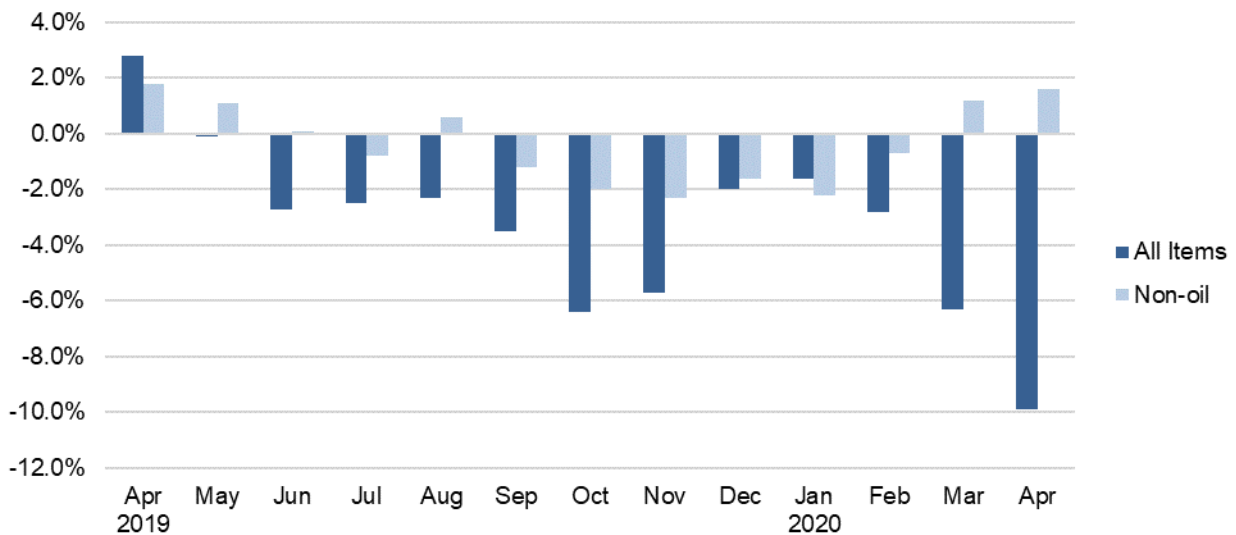


Table 1 Import Price Index

April 2020

Commodity section / division	Weights	Index (2018=100)			% Change		
					Mar 2020	Apr 2020	Apr 2020
		Feb 2020	Mar 2020	Apr 2020	Feb 2020	Mar 2020	Apr 2019
All Items	10,000	97.2	92.0	87.4	-5.3	-5.0	-13.3
Non-oil Items	7,410	101.4	103.2	103.6	1.8	0.4	2.4
Food & Live Animals	247	103.1	103.2	103.8	0.1	0.6	3.6
Live animals	9	99.8	100.6	97.7	0.7	-2.8	1.1
Meat & meat preparations	31	107.9	108.8	109.2	0.9	0.4	11.5
Dairy products & birds' eggs	30	104.8	105.8	113.4	1.0	7.2	11.9
Fish seafood & preparations	34	97.6	97.9	98.1	0.4	0.2	-0.8
Cereals & cereal preparations	24	101.0	101.6	101.9	0.6	0.3	1.4
Vegetables & fruit	48	106.0	106.0	103.7	-	-2.2	2.8
Sugar, sugar preparations & honey	9	101.8	103.8	104.5	2.0	0.7	5.4
Coffee, tea, cocoa, spices & manufactures	28	98.8	95.1	95.2	-3.7	0.1	-4.0
Animal feeding stuff (excl unmilled cereals)	4	98.5	99.6	99.7	1.2	0.1	2.5
Miscellaneous food preparations	31	105.7	106.3	107.0	0.6	0.7	2.6
Beverages & Tobacco	112	102.3	104.0	104.1	1.6	0.1	3.4
Beverages	84	102.4	103.9	103.8	1.4	-0.1	3.4
Tobacco & manufactures	28	102.0	104.1	105.0	2.1	0.8	3.4
Crude Materials (excl fuels)	84	102.7	103.6	102.1	0.8	-1.4	0.5
Oil seeds & oleaginous fruits	2	109.7	110.9	112.0	1.1	1.1	13.3
Crude rubber	19	110.6	112.9	113.5	2.1	0.6	9.3
Cork & wood	3	94.8	93.9	93.9	-0.9	-	-9.2
Crude fertilizers & minerals	30	102.3	102.4	102.1	-	-0.3	1.5
Metalliferous ores & metal scrap	17	94.4	95.7	88.6	1.4	-7.5	-11.7
Crude animal & vegetable materials nes	13	104.4	104.9	104.9	0.5	-	2.6
Mineral Fuels, Lubricants & Related Materials	2,590	85.1	60.3	41.2	-29.2	-31.5	-58.7
Petroleum & products & related materials	2,431	85.6	59.8	40.8	-30.1	-31.8	-59.1
Gas	159	78.6	66.8	47.7	-15.0	-28.6	-53.6
Animal & Vegetable Oils, Fats & Waxes	27	101.6	99.0	96.5	-2.6	-2.5	6.9
Fixed vegetable fats & oils	27	101.6	99.0	96.5	-2.6	-2.5	6.9
Chemicals & Chemical Products	888	98.1	98.9	97.7	0.8	-1.3	-2.0
Organic chemicals	216	94.6	94.3	89.0	-0.3	-5.7	-8.7
Inorganic chemicals	35	97.7	100.7	103.3	3.1	2.6	1.3
Dyeing, tanning & colouring materials	33	105.8	108.6	109.4	2.6	0.8	2.2
Medicinal & pharmaceutical products	101	104.6	105.6	105.9	1.0	0.3	1.7
Essential oils & perfume; toilet cleaning products	147	101.5	101.9	101.8	0.4	-0.1	1.7
Plastics in primary forms	164	87.9	89.2	87.8	1.5	-1.6	-7.5
Plastics in non-primary forms	38	103.2	104.8	105.2	1.5	0.4	3.7
Chemical materials & products nes	154	103.7	104.6	105.2	0.8	0.6	3.5
Manufactured Goods	505	99.9	100.5	100.6	0.6	0.1	0.6
Rubber manufactures nes	25	99.0	101.2	101.6	2.2	0.5	2.7
Paper manufactures	51	93.3	94.1	94.4	0.9	0.3	-3.9
Textile manufactures	26	103.2	103.7	103.9	0.5	0.2	3.9
Non-metal mineral manufactures nes	60	106.3	105.3	105.4	-1.0	0.1	5.2
Iron & steel	131	98.6	99.6	100.0	1.0	0.4	-1.3
Non-ferrous metals	84	100.1	99.3	97.8	-0.8	-1.6	-1.1
Manufactures of metals nes	128	100.2	101.6	102.5	1.4	0.9	2.1
Machinery & Transport Equipment	4,690	101.4	103.6	104.2	2.1	0.6	2.5
Power-generating machinery & equipment	526	111.4	114.2	114.6	2.5	0.4	10.6
Machinery specialized for particular industries	306	103.0	105.0	105.6	1.9	0.6	5.0
Metal working machinery	23	97.8	103.2	105.5	5.5	2.2	6.0
General industrial machinery	281	101.5	103.0	103.8	1.5	0.8	3.9
Office machines & data-processing machines	457	97.2	98.6	98.4	1.4	-0.2	-3.7
Telecommunication apparatus	390	90.6	91.4	91.3	0.9	-0.2	-6.7
Electrical machinery apparatus nes, electrical parts	2,542	101.8	104.3	105.3	2.5	0.9	3.1
Road vehicles	164	98.9	99.3	98.9	0.4	-0.5	-2.3
Miscellaneous Manufactured Articles	857	104.3	106.8	108.1	2.4	1.2	7.3
Prefab building, sanitary plumbing, lighting nes	12	101.8	101.8	101.8	-	-	-4.7
Furniture, bedding, mattresses, cushions & others	26	104.9	106.0	106.2	1.0	0.3	3.2
Travel goods, handbags & similar containers	54	101.7	102.1	102.2	0.3	0.1	-2.4
Articles of apparel & clothing accessories	79	100.0	102.0	102.6	1.9	0.6	2.1
Footwear	24	100.0	100.4	100.5	0.3	0.1	-
Professional scientific & controlling instruments	275	105.4	108.0	108.8	2.4	0.8	7.3
Photographic & optical goods nes; watches & clocks	106	102.2	104.8	105.4	2.5	0.6	5.4
Miscellaneous manufactured articles nes	283	106.0	109.5	112.0	3.3	2.3	13.2

Figures may not sum to total due to rounding.

Table 2 Export Price Index

April 2020

Commodity section / division	Weights	Index (2018=100)			% Change		
					Mar 2020	Apr 2020	Apr 2020
		Feb 2020	Mar 2020	Apr 2020	Feb 2020	Mar 2020	Apr 2019
All Items	10,000	96.2	93.0	90.1	-3.3	-3.2	-9.9
Non-oil Items	8,022	99.9	101.3	101.6	1.4	0.3	1.6
Food & Live Animals	236	97.5	96.1	93.1	-1.4	-3.1	-3.2
Dairy products & birds' eggs	5	102.4	104.3	105.4	1.8	1.1	4.8
Fish seafood & preparations	9	94.1	93.0	91.3	-1.2	-1.8	-6.8
Cereals & cereal preparations	7	98.6	99.6	100.4	0.9	0.9	0.1
Vegetables & fruit	8	90.7	94.0	94.5	3.6	0.6	5.9
Sugar, sugar preparations & honey	3	102.4	102.7	104.1	0.3	1.4	4.3
Coffee, tea, cocoa, spices & manufactures	26	106.4	108.5	107.1	2.0	-1.2	3.7
Animal feeding stuff (excl unmilled cereals)	7	111.2	113.3	113.6	1.9	0.3	6.0
Miscellaneous food preparations	171	95.8	93.3	89.3	-2.6	-4.3	-5.5
Beverages & Tobacco	103	105.5	106.3	107.7	0.8	1.3	5.2
Beverages	75	105.9	106.4	107.9	0.5	1.4	5.5
Tobacco & manufactures	28	104.5	105.9	106.9	1.3	1.0	4.4
Crude Materials (excl fuels)	91	82.2	82.4	82.4	0.3	-	-13.3
Crude rubber	35	91.3	91.4	90.3	0.1	-1.2	-7.7
Pulp and waste paper	26	63.2	67.2	70.6	6.5	5.0	-24.4
Metalliferous ores & metal scrap	26	86.3	83.2	81.3	-3.6	-2.3	-12.2
Crude animal & vegetable materials nes	4	97.9	97.1	96.7	-0.8	-0.4	-0.4
Mineral Fuels, Lubricants & Related Materials	1,978	81.3	59.4	43.5	-26.9	-26.8	-56.6
Petroleum & products & related materials	1,978	81.3	59.4	43.5	-26.9	-26.8	-56.6
Animal & Vegetable Oils, Fats & Waxes	5	105.4	110.8	106.5	5.1	-3.8	10.2
Fixed vegetable fats & oils	5	105.4	110.8	106.5	5.1	-3.8	10.2
Chemicals & Chemical Products	1,525	93.0	93.4	92.6	0.5	-0.9	-3.6
Organic chemicals	428	89.2	87.0	84.0	-2.5	-3.4	-8.3
Inorganic chemicals	14	107.3	106.1	106.4	-1.2	0.3	1.8
Dyeing, tanning & colouring materials	37	98.9	99.5	100.3	0.6	0.8	-3.0
Medicinal & pharmaceutical products	250	96.1	98.6	99.4	2.6	0.8	-0.3
Essential oils & perfume; toilet cleaning products	232	99.9	100.4	100.1	0.5	-0.3	0.6
Plastics in primary forms	355	85.4	86.1	85.5	0.9	-0.7	-8.7
Plastics in non-primary forms	29	106.7	108.8	109.4	2.0	0.5	9.2
Chemical materials & products nes	181	99.0	101.8	102.2	2.9	0.3	3.3
Manufactured Goods	318	97.5	97.3	96.7	-0.2	-0.7	-2.5
Rubber manufactures nes	22	99.6	101.1	101.4	1.5	0.3	4.1
Paper manufactures	41	99.0	99.8	100.3	0.8	0.5	1.2
Textile manufactures	19	100.7	103.1	103.2	2.4	0.1	3.6
Non-metal mineral manufactures nes	14	100.3	102.3	102.8	2.0	0.5	2.4
Iron & steel	66	99.7	99.4	97.6	-0.3	-1.8	-5.3
Non-ferrous metals	67	89.8	84.9	82.9	-5.5	-2.3	-14.8
Manufactures of metals nes	89	99.4	101.1	101.1	1.7	-	3.5
Machinery & Transport Equipment	4,836	102.0	103.7	104.8	1.7	1.0	3.3
Power-generating machinery & equipment	418	102.1	104.2	104.4	2.1	0.2	4.9
Machinery specialized for particular industries	437	107.4	109.5	110.0	2.0	0.5	1.6
Metal working machinery	25	101.8	102.4	106.2	0.6	3.7	5.3
General industrial machinery	212	102.6	104.0	104.3	1.3	0.3	5.8
Office machines & data-processing machines	467	104.9	108.3	108.7	3.2	0.4	9.9
Telecommunication apparatus	366	91.9	92.8	92.7	1.0	-0.1	-3.2
Electrical machinery apparatus nes, electrical parts	2,814	101.8	103.3	104.9	1.5	1.5	2.8
Road vehicles	98	104.4	106.3	106.6	1.8	0.3	5.8
Miscellaneous Manufactured Articles	908	102.7	105.6	104.7	2.8	-0.8	4.0
Prefab building, sanitary plumbing, lighting nes	3	98.6	101.8	101.9	3.3	0.1	3.1
Furniture, bedding, mattresses, cushions & others	5	102.4	103.9	103.9	1.4	0.1	2.9
Travel goods, handbags & similar containers	37	100.5	101.2	100.7	0.7	-0.5	2.4
Articles of apparel & clothing accessories	40	112.3	111.4	113.1	-0.8	1.5	2.1
Footwear	14	101.2	97.7	98.3	-3.4	0.6	-3.3
Professional scientific & controlling instruments	365	96.3	97.7	96.7	1.4	-0.9	-2.2
Photographic & optical goods nes; watches & clocks	98	102.9	104.3	104.4	1.3	0.1	5.3
Miscellaneous manufactured articles nes	345	108.5	114.5	113.0	5.5	-1.3	10.6

Figures may not sum to total due to rounding.

Table 3 Import Price Index

Section	All Items	Non-oil Items	Food & Live Animals	Beverages & Tobacco	Crude Materials	Mineral Fuels	Animal & Vegetable Oils, Fats & Waxes	Chemicals & Chemical Products	Manu- factured Goods	Machinery & Transport Equipment	Misc. Manu- factured Articles
Weights	10,000	7,410	247	112	84	2,590	27	888	505	4,690	857
Index (2018=100)											
2016	90.1	100.4	99.5	99.6	97.8	61.5	110.6	93.8	92.3	102.4	101.8
2017	95.3	101.0	101.2	100.2	100.5	79.7	114.7	96.7	96.4	102.2	101.6
2018	100.0	100.0	100.0	100.0	100.0	100.0	100.0	100.0	100.0	100.0	100.0
2019	99.0	100.9	101.5	100.4	101.2	93.4	90.4	98.6	99.9	101.3	102.0
2019											
Apr	100.8	101.1	100.2	100.6	101.6	99.9	90.3	99.6	100.0	101.7	100.7
May	101.0	101.6	101.0	101.0	102.9	99.3	89.1	99.5	100.4	102.3	101.5
Jun	99.2	101.4	101.8	100.9	102.0	92.8	87.6	99.1	99.6	102.0	102.0
Jul	99.6	100.6	102.3	100.0	101.5	96.9	86.2	98.4	99.2	100.9	102.2
Aug	99.0	101.9	102.6	100.7	102.4	90.6	88.6	98.9	100.0	102.3	104.1
Sep	99.1	101.4	102.6	100.3	101.2	92.7	89.1	98.8	100.5	101.5	103.9
Oct	98.4	100.9	102.5	100.0	100.8	91.4	89.5	98.2	100.0	101.1	103.4
Nov	97.4	100.1	101.6	99.7	100.7	89.5	93.7	97.3	99.6	100.2	102.4
Dec	96.6	99.7	102.2	99.5	101.1	87.8	98.9	96.4	99.5	99.7	102.2
2020											
Jan	97.0	99.6	103.0	101.3	101.7	89.5	102.9	96.2	98.1	99.7	102.3
Feb	97.2	101.4	103.1	102.3	102.7	85.1	101.6	98.1	99.9	101.4	104.3
Mar	92.0	103.2	103.2	104.0	103.6	60.3	99.0	98.9	100.5	103.6	106.8
Apr	87.4	103.6	103.8	104.1	102.1	41.2	96.5	97.7	100.6	104.2	108.1
Percentage Change over same period of previous year (%)											
2017	5.8	0.6	1.7	0.7	2.7	29.5	3.7	3.1	4.5	-0.3	-0.1
2018	4.9	-1.0	-1.2	-0.2	-0.5	25.5	-12.8	3.4	3.7	-2.1	-1.6
2019	-1.0	0.9	1.5	0.4	1.2	-6.6	-9.6	-1.4	-0.1	1.3	2.0
2019											
Apr	4.5	2.9	2.3	1.2	3.7	9.2	-13.5	0.9	0.9	3.9	1.5
May	1.0	2.2	1.9	0.7	3.2	-2.3	-14.0	-0.3	0.1	3.2	1.5
Jun	-1.5	1.7	2.6	0.5	1.5	-10.2	-13.4	-0.9	-1.2	2.5	1.8
Jul	-2.5	-0.2	2.2	-0.8	-	-8.8	-13.7	-2.4	-1.7	-	1.7
Aug	-3.9	0.9	1.7	-0.2	0.8	-16.7	-9.5	-2.1	-0.8	1.2	3.6
Sep	-4.9	-0.1	1.5	-0.6	-	-17.5	-7.3	-2.5	0.1	-0.2	3.2
Oct	-6.8	-0.8	1.3	-0.9	-	-21.7	-5.1	-3.5	-0.6	-1.0	2.6
Nov	-5.1	-1.4	0.8	-1.3	-	-15.3	3.6	-3.7	-0.4	-1.9	2.1
Dec	-2.5	-1.8	1.2	-1.4	0.7	-4.5	9.6	-3.8	-0.6	-2.5	1.8
2020											
Jan	-0.7	-1.3	1.7	0.5	2.0	1.3	12.7	-2.9	-1.3	-1.9	1.4
Feb	-1.6	0.8	2.9	1.7	2.6	-9.2	12.0	-0.6	-0.5	0.5	3.5
Mar	-7.9	2.4	3.0	3.3	3.3	-38.4	10.4	-0.2	-0.1	2.4	6.2
Apr	-13.3	2.4	3.6	3.4	0.5	-58.7	6.9	-2.0	0.6	2.5	7.3

Table 4 Export Price Index

Section	All Items	Non-oil Items	Food & Live Animals	Beverages & Tobacco	Crude Materials	Mineral Fuels	Animal & Vegetable Oils, Fats & Waxes	Chemicals & Chemical Products	Manu-factured Goods	Machinery & Transport Equipment	Misc. Manu-factured Articles
Weights	10,000	8,022	236	103	91	1,978	5	1,525	318	4,836	908
Index (2018=100)											
2016	94.2	101.8	102.2	103.4	88.0	64.7	97.7	96.8	95.6	104.2	100.8
2017	96.9	100.9	100.0	101.7	101.1	81.4	102.8	97.7	98.2	102.0	101.5
2018	100.0	100.0	100.0	100.0	100.0	100.0	100.0	100.0	100.0	100.0	100.0
2019	98.6	100.1	97.6	102.6	90.6	92.4	97.1	94.8	98.7	101.8	101.9
2019											
Apr	100.0	100.0	96.2	102.3	95.1	100.1	96.6	96.0	99.1	101.4	100.7
May	100.0	100.4	97.3	102.5	94.4	98.2	96.9	96.8	98.7	101.6	101.7
Jun	98.1	100.0	97.7	102.3	91.5	90.6	95.0	94.9	98.0	101.7	101.3
Jul	99.3	100.0	98.1	102.2	90.3	96.5	98.8	94.3	98.2	101.9	101.2
Aug	99.8	101.6	97.8	102.6	89.1	92.5	100.4	94.7	99.3	103.9	103.6
Sep	100.0	100.7	97.9	103.2	87.4	97.0	97.6	94.1	99.6	102.7	103.6
Oct	97.9	100.0	97.2	103.3	85.4	89.4	94.3	93.3	98.6	102.0	102.7
Nov	96.1	99.0	97.0	102.4	82.3	84.3	94.9	92.8	97.9	100.8	101.5
Dec	96.2	98.9	95.7	102.9	81.6	85.3	97.9	91.8	97.5	101.1	101.3
2020											
Jan	96.1	98.1	94.9	103.5	82.6	88.0	99.7	91.0	97.0	100.3	100.7
Feb	96.2	99.9	97.5	105.5	82.2	81.3	105.4	93.0	97.5	102.0	102.7
Mar	93.0	101.3	96.1	106.3	82.4	59.4	110.8	93.4	97.3	103.7	105.6
Apr	90.1	101.6	93.1	107.7	82.4	43.5	106.5	92.6	96.7	104.8	104.7
Percentage Change over same period of previous year (%)											
2017	2.9	-0.9	-2.2	-1.7	14.9	25.7	5.2	0.9	2.7	-2.1	0.7
2018	3.2	-0.9	-	-1.7	-1.1	22.9	-2.7	2.3	1.9	-1.9	-1.5
2019	-1.4	0.1	-2.4	2.6	-9.4	-7.6	-2.9	-5.2	-1.3	1.8	1.9
2019											
Apr	2.8	1.8	-2.4	4.0	-1.9	7.1	-3.5	-1.9	-0.8	3.1	3.0
May	-0.1	1.1	-0.4	2.9	-4.1	-4.7	-3.7	-2.7	-2.0	2.3	3.0
Jun	-2.7	0.1	-1.9	2.6	-8.3	-13.4	-5.5	-5.5	-3.3	1.9	2.2
Jul	-2.5	-0.8	-3.2	1.5	-10.0	-9.1	-1.9	-7.4	-2.5	1.4	0.4
Aug	-2.3	0.6	-4.3	2.6	-13.0	-13.3	0.3	-6.9	-0.5	3.0	3.4
Sep	-3.5	-1.2	-3.3	1.9	-14.4	-11.8	-2.6	-8.1	-0.1	0.4	2.9
Oct	-6.4	-2.0	-4.5	1.5	-17.6	-22.2	-5.8	-9.1	-2.2	0.3	-
Nov	-5.7	-2.3	-4.3	-0.1	-20.5	-19.0	-4.7	-8.6	-1.8	-0.1	-1.1
Dec	-2.0	-1.6	-4.5	1.0	-20.9	-3.8	-0.7	-7.4	-1.5	0.6	-0.9
2020											
Jan	-1.6	-2.2	-4.9	1.0	-15.4	1.2	0.6	-5.9	-1.4	-1.1	-1.1
Feb	-2.8	-0.7	-1.7	2.9	-14.8	-11.8	9.1	-3.3	-1.8	-	1.0
Mar	-6.3	1.2	-1.8	4.2	-13.8	-38.0	14.0	-3.0	-2.1	2.5	4.1
Apr	-9.9	1.6	-3.2	5.2	-13.3	-56.6	10.2	-3.6	-2.5	3.3	4.0

NOTATIONS

- nes not elsewhere specified
- nil or negligible

NOTES

The Import and Export Price Indices report contains statistics that are the most recent available at the time of its preparation.

Some statistics, particularly those for the most recent time periods, are provisional and may be subject to revision in later issues.