

# IMPORT & EXPORT PRICE INDICES

August 2018

**IMPORT AND EXPORT PRICE INDICES, August 2018**  
**ISSN 2591-7463**

**© Department of Statistics, Ministry of Trade & Industry, Republic of Singapore**

Reproducing or quoting any part of this publication is permitted, provided this publication is accredited as the source. Please refer to the Statistics Singapore Website Terms of Use (<http://www.singstat.gov.sg/terms-of-use>) for more details on the conditions of use of this publication.

Statistical activities conducted by the Singapore Department of Statistics are governed by the provisions of the Statistics Act (Cap. 317). The Act guarantees the confidentiality of information collected from individuals and companies. It spells out the legislative authority and responsibility of the Chief Statistician. The Act is available in the Department's Website ([www.singstat.gov.sg](http://www.singstat.gov.sg)).

# IMPORT PRICE INDICES (2012 = 100)

**August 2018**

## Import Price Index

### *Change over previous month*

The Import Price Index was unchanged in August 2018, after the 0.4 per cent increase in July 2018. The Oil index increased 0.4 per cent, following the 0.9 per cent rise in the previous month, attributed mainly to higher prices of motor spirits and high speed diesel fuel. The Non-oil index fell 0.1 per cent in August 2018, in contrast to the 0.2 per cent increase in July 2018.

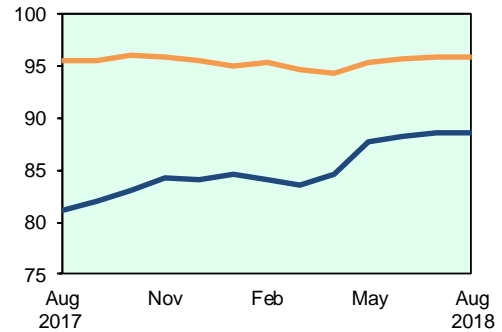
Among the Non-oil sub-indices, decreases led by the Miscellaneous Manufactured Products (-0.3 per cent), Machinery & Equipment (-0.2 per cent) and Chemicals & Chemical Products (-0.1 per cent) indices were partially moderated by increases in the Food & Live Animals (0.6 per cent) and Beverages & Tobacco (0.1 per cent) indices.

### *Change over same period of previous year*

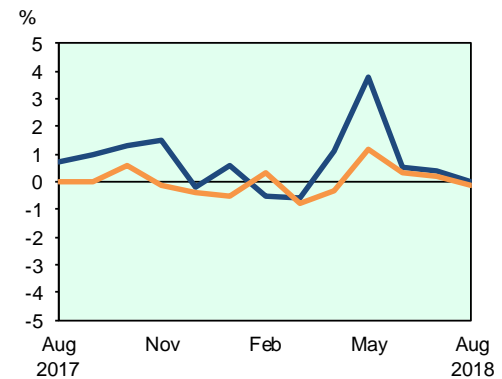
The Import Price Index climbed 9.2 per cent in August 2018 from a year ago, following the 10.0 per cent increase in July 2018. The Oil and Non-oil indices increased 41.9 per cent and 0.3 per cent respectively.

For the Non-oil sub-indices, higher prices of Chemicals & Chemical Products (6.4 per cent), Manufactured Goods (5.4 per cent), Beverages & Tobacco (0.2 per cent) and Food & Live Animals (0.1 per cent) were partially offset by lower prices of Animal & Vegetable Oils (-10.2 per cent), Miscellaneous Manufactured Articles (-1.2 per cent) and Machinery & Transport Equipment (-0.9 per cent).

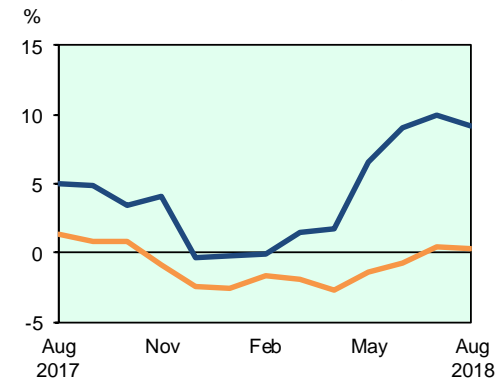
Import Price Index (2012=100) — Overall — Non-oil



Change over previous month



Change over same period of previous year



# EXPORT PRICE INDICES (2012 = 100)

## August 2018

### Export Price Index

#### *Change over previous month*

The Export Price Index rose 0.2 per cent in August 2018, following the 0.6 per cent increase in July. The Oil index went up 0.4 per cent, extending the 1.2 per cent gain in the previous month, due to higher prices of high speed diesel fuel and bunker fuel. The Non-oil index rose 0.2 per cent in August 2018, after the 0.5 per cent increase in July.

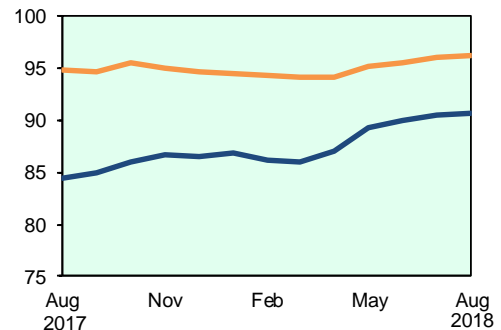
For the Non-oil sub-indices, increases were led by the Food & Live Animals (1.1 per cent) index, due mainly to higher prices of food preparations, and the Machinery & Transport Equipment (0.3 per cent) index. The increases were partially offset by decreases led by the Crude Materials (-2.5 per cent) index, due mainly to lower prices of copper wastes, and the Miscellaneous Manufactured Articles (-0.1 per cent) index.

#### *Change over same period of previous year*

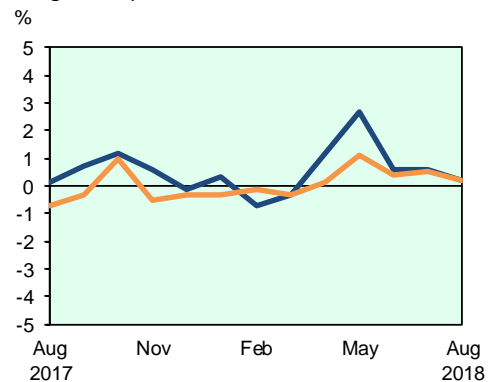
The Export Price Index increased 7.4 per cent in August 2018 over the previous year, following the 7.2 per cent increase in July 2018. The Oil and Non-oil indices rose 36.8 per cent and 1.4 per cent respectively.

Among the Non-oil sub-indices, increases in the Chemicals & Chemical Products (5.8 per cent), Food & Live Animals (2.4 per cent), Manufactured Goods (2.3 per cent), Animal & Vegetable Oils (2.0 per cent) and Machinery & Transport Equipment (0.3 per cent) indices were partially offset by decreases in the Miscellaneous Manufactured Articles (-0.2 per cent) and Crude Materials (-0.1 per cent) indices.

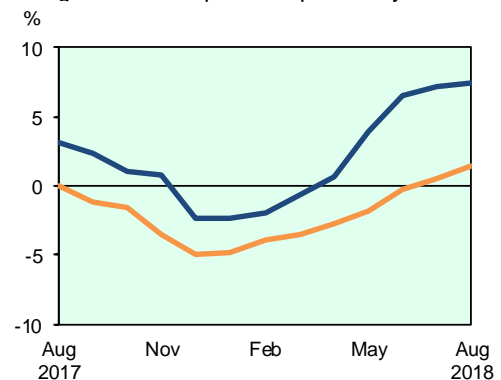
Export Price Index  
(2012=100) — Overall — Non-oil



Change over previous month



Change over same period of previous year



## TECHNICAL NOTE

The *Import Price Index (IPI)* is used primarily as an indicator to track the price trends of imported goods into Singapore. Prices of imports, valued at cif (cost, insurance and freight) are obtained monthly from major importers. The weighting pattern of the index is derived from import statistics for 2012.

The *Export Price Index (EPI)* measures changes in the price of all exports of merchandise from Singapore, including re-exports. In general, prices are obtained from major exporters of the selected commodities. Prices used in the index computation, are the prices of goods that physically leave Singapore's main ports of export; also termed as free on board prices. The weights of the index are derived from the distribution of export by commodity in 2012.

### Index Formula

The 2012-based series is compiled using the Laspeyres formula where the price and weight reference periods are aligned to the year 2012. The geometric mean (GM) formula has been adopted in the computation of unweighted elementary aggregate price indices. The arithmetic mean (AM) formula is applied in compiling indices at higher levels of aggregation where weights of specific sub-indices are available

An Information Paper on the Rebasing of Import and Export Price Indices (2012=100) is available on the department's website at <https://www.singstat.gov.sg/ppi#Producer-and-International-Trade-Prices>.

### Measurement of Changes in Price Indices

*Change over previous month* compares the index of the month with that of the preceding month. Such comparisons measure the change in the price index between two consecutive months. They serve as useful short-term indicators of the price movements. As the price indices are found not to be seasonal, it is not necessary for seasonal adjustment to be carried out.

*Change over same period of previous year* measures change in the index over a twelve-month period. Such comparisons compare the movement in the price index between similar months in two consecutive years.

### Index Revision

The indices may be revised when late returns and amendments received from respondents are incorporated.

### Dissemination of Data

The Import and Export Price Indices are available on the SingStat Website ([www.singstat.gov.sg/tablebuilder](http://www.singstat.gov.sg/tablebuilder)). Excel tables for this month's report are available at <https://www.singstat.gov.sg/publications/economy/import-export-price-indices> or through the QR code below:



**Table 1 Import Price Index**

**August 2018**

Commodity section / division	Weights	Index (2012=100)			% Change		
		Jun 2018	Jul 2018	Aug 2018	Jul 2018	Aug 2018	Aug 2018
					Jun 2018	Jul 2018	Aug 2017
<b>All Items</b>	<b>10,000</b>	<b>88.2</b>	<b>88.6</b>	<b>88.6</b>	<b>0.4</b>	<b>-</b>	<b>9.2</b>
<b>Non-oil Items</b>	<b>6,684</b>	<b>95.7</b>	<b>95.9</b>	<b>95.8</b>	<b>0.2</b>	<b>-0.1</b>	<b>0.3</b>
Food & Live Animals	215	98.6	100.0	100.6	1.4	0.6	0.1
Live animals	9	91.6	96.2	90.6	5.0	-5.9	-6.7
Meat & meat preparations	26	101.0	101.0	99.6	-	-1.3	-7.6
Dairy products & birds' eggs	28	90.9	94.3	98.2	3.6	4.2	3.3
Fish seafood & preparations	28	111.1	111.2	111.5	0.1	0.3	1.0
Cereals & cereal preparations	21	103.0	104.3	104.2	1.3	-0.1	15.1
Vegetables & fruit	37	104.6	106.6	109.6	2.0	2.8	-0.5
Sugar, sugar preparations & honey	12	76.6	79.3	79.7	3.6	0.5	-10.4
Coffee, tea, cocoa, spices & manufactures	28	91.3	90.8	90.6	-0.5	-0.2	-4.9
Animal feeding stuff (excl unmilled cereals)	3	108.1	110.3	109.9	2.0	-0.3	1.2
Miscellaneous food preparations	23	97.8	99.4	99.2	1.6	-0.2	6.9
Beverages & Tobacco	86	105.2	105.7	105.7	0.5	0.1	0.2
Beverages	66	102.3	102.7	102.7	0.4	-	-0.9
Tobacco & manufactures	20	114.5	115.3	115.4	0.7	0.1	3.2
Crude Materials (excl fuels)	83	85.1	83.9	83.0	-1.5	-1.0	-
Hides, skins & furskins raw	1	85.4	85.6	85.6	0.2	0.1	-3.4
Oil seeds & oleaginous fruits	1	95.7	96.4	96.4	0.7	-	1.0
Crude rubber	17	59.6	60.8	60.4	1.9	-0.6	3.0
Cork & w ood	5	91.3	89.4	89.5	-2.1	0.1	0.8
Textile fibres & their w astes	3	89.8	88.7	88.8	-1.2	0.1	-6.1
Crude fertilizers & minerals	26	80.0	80.2	79.7	0.2	-0.5	0.1
Metalliferous ores & metal scrap	21	98.9	93.6	90.7	-5.4	-3.2	-2.7
Crude animal & vegetable materials nes	9	107.5	107.3	108.3	-0.2	1.0	3.6
Mineral Fuels, Lubricants & Related Materials	3,316	73.1	73.8	74.0	0.9	0.4	41.9
Petroleum & products & related materials	3,152	72.0	72.9	73.3	1.3	0.5	42.6
Gas	164	93.0	89.4	88.4	-3.9	-1.0	30.9
Animal & Vegetable Oils, Fats & Waxes	37	70.4	68.7	67.7	-2.5	-1.4	-10.2
Fixed vegetable fats & oils	36	70.0	68.2	67.2	-2.6	-1.4	-10.6
Animal & vegetable oils, fats & w axes nes	1	84.2	83.6	83.7	-0.7	0.1	-0.5
Chemicals & Chemical Products	694	95.0	95.0	94.9	-	-0.1	6.4
Organic chemicals	188	89.3	88.5	89.4	-0.8	1.0	11.8
Inorganic chemicals	34	103.0	97.4	92.7	-5.5	-4.8	6.1
Dyeing, tanning & colouring materials	28	88.6	89.7	90.0	1.3	0.3	1.5
Medicinal & pharmaceutical products	70	86.5	86.6	86.5	0.2	-0.2	5.2
Essential oils & perfume; toilet cleaning products	75	105.4	106.9	105.5	1.3	-1.3	2.9
Plastics in primary forms	147	97.7	99.1	98.2	1.4	-0.9	10.5
Plastics in non-primary forms	31	101.1	101.8	102.1	0.7	0.3	1.2
Chemical materials & products nes	121	96.9	96.7	97.7	-0.2	1.1	0.2
Manufactured Goods	635	96.1	96.4	96.4	0.3	-	5.4
Rubber manufactures nes	32	92.6	93.6	93.8	1.1	0.2	0.4
Paper manufactures	50	107.3	108.8	109.6	1.4	0.7	8.3
Textile manufactures	31	100.1	100.7	101.1	0.6	0.4	0.9
Non-metal mineral manufactures nes	83	94.0	95.1	95.4	1.2	0.3	2.7
Iron & steel	179	94.4	96.0	96.4	1.7	0.4	9.6
Non-ferrous metals	116	95.9	91.3	89.3	-4.7	-2.2	0.8
Manufactures of metals nes	144	95.7	97.2	97.8	1.6	0.6	6.8
Machinery & Transport Equipment	4,205	95.2	95.5	95.3	0.2	-0.2	-0.9
Pow er-generating machinery & equipment	298	125.9	127.2	127.7	1.0	0.4	4.3
Machinery specialized for particular industries	352	93.8	94.8	94.9	1.1	-	2.8
Metal w orking machinery	31	95.1	95.3	95.8	0.2	0.6	-0.1
General industrial machinery	328	99.7	100.3	99.8	0.6	-0.5	-1.6
Office machines & data-processing machines	495	99.4	100.0	100.1	0.7	0.1	0.2
Telecommunication apparatus	422	68.2	68.4	67.7	0.2	-1.0	-3.6
Electrical machinery apparatus nes, electrical parts	2,116	94.3	94.1	93.9	-0.2	-0.2	-2.4
Road vehicles	163	103.0	102.7	103.0	-0.2	0.3	1.1
Miscellaneous Manufactured Articles	729	99.6	99.6	99.3	-	-0.3	-1.2
Prefab building, sanitary plumbing, lighting nes	16	102.2	101.5	101.1	-0.6	-0.4	-0.2
Furniture, bedding, mattresses, cushions & others	25	102.1	102.1	104.2	-0.1	2.1	6.0
Travel goods, handbags & similar containers	25	115.4	116.0	116.0	0.5	0.1	0.8
Articles of apparel & clothing accessories	64	106.3	106.9	106.1	0.6	-0.8	0.5
Footw ear	16	105.3	105.4	105.4	0.1	-	0.8
Professional scientific & controlling instruments	207	110.7	111.5	111.7	0.7	0.2	1.0
Photographic & optical goods nes; w atches & clocks	99	93.2	93.8	94.1	0.6	0.3	-1.0
Miscellaneous manufactured articles nes	277	90.0	89.0	88.0	-1.1	-1.2	-4.9

**Table 2 Export Price Index**

**August 2018**

Commodity section / division	Weights	Index (2012=100)			% Change		
		Jun 2018	Jul 2018	Aug 2018	Jul 2018	Aug 2018	Aug 2018
					Jun 2018	Jul 2018	Aug 2017
<b>All Items</b>	<b>10,000</b>	<b>89.9</b>	<b>90.5</b>	<b>90.7</b>	<b>0.6</b>	<b>0.2</b>	<b>7.4</b>
<b>Non-oil Items</b>	<b>7,395</b>	<b>95.5</b>	<b>96.0</b>	<b>96.1</b>	<b>0.5</b>	<b>0.2</b>	<b>1.4</b>
Food & Live Animals	124	97.0	98.1	99.2	1.1	1.1	2.4
Meat & meat preparations	2	102.2	102.2	102.2	-	-	-2.7
Dairy products & birds' eggs	7	76.7	76.8	75.3	0.2	-2.0	-4.9
Fish seafood & preparations	9	103.9	107.3	110.3	3.3	2.8	6.2
Cereals & cereal preparations	7	112.5	113.0	112.9	0.4	-0.1	3.1
Vegetables & fruit	8	132.2	125.9	121.7	-4.8	-3.3	-12.3
Sugar, sugar preparations & honey	6	93.4	93.6	93.7	0.2	0.1	-1.7
Coffee, tea, cocoa, spices & manufactures	29	94.1	94.3	94.6	0.2	0.3	-3.3
Animal feeding stuff (excl unmilled cereals)	6	102.8	103.4	103.3	0.6	-0.1	0.8
Miscellaneous food preparations	50	92.4	95.2	98.0	2.9	3.0	10.5
Beverages & Tobacco	87	106.1	106.3	106.7	0.2	0.3	-
Beverages	66	101.3	101.2	101.5	-0.2	0.4	-1.0
Tobacco & manufactures	21	121.2	122.6	122.9	1.1	0.3	2.8
Crude Materials (excl fuels)	60	80.5	80.8	78.8	0.4	-2.5	-0.1
Crude rubber	15	49.7	48.1	48.6	-3.2	1.0	-13.4
Cork & w ood	2	102.6	103.5	103.6	1.0	0.1	4.6
Pulp and w aste paper	6	108.3	115.3	113.3	6.4	-1.7	-1.3
Textile fibres & their w astes	3	76.4	81.2	81.2	6.4	-	6.4
Metalliferous ores & metal scrap	29	86.1	85.2	81.7	-1.1	-4.1	3.7
Crude animal & vegetable materials nes	5	96.8	99.1	97.0	2.3	-2.1	1.8
Mineral Fuels, Lubricants & Related Materials	2,605	73.9	74.8	75.1	1.2	0.4	36.8
Petroleum & products & related materials	2,595	74.0	74.9	75.2	1.2	0.4	36.9
Gas	10	59.9	64.5	66.2	7.8	2.6	30.4
Animal & Vegetable Oils, Fats & Waxes	8	85.6	88.1	87.6	2.8	-0.5	2.0
Animal oils & fats	1	96.7	94.7	94.7	-2.0	-	1.8
Fixed vegetable fats & oils	5	77.1	76.8	76.1	-0.4	-0.8	-1.9
Animal & vegetable oils, fats & w axes nes	2	106.2	116.4	116.4	9.6	-	9.6
Chemicals & Chemical Products	1,344	95.9	96.7	96.8	0.8	0.1	5.8
Organic chemicals	498	90.2	90.5	90.3	0.3	-0.3	8.0
Inorganic chemicals	13	94.2	93.3	93.0	-0.9	-0.4	-0.6
Dyeing, tanning & colouring materials	32	96.2	97.5	98.5	1.4	0.9	7.1
Medicinal & pharmaceutical products	228	90.7	91.8	92.0	1.2	0.2	-0.5
Essential oils & perfume; toilet cleaning products	127	110.0	109.9	110.0	-0.1	0.1	-0.9
Plastics in primary forms	289	101.2	102.7	102.9	1.5	0.2	13.7
Plastics in non-primary forms	29	96.9	97.8	99.2	0.9	1.4	2.3
Chemical materials & products nes	128	101.2	102.6	103.1	1.4	0.5	1.6
Manufactured Goods	381	97.8	97.7	97.5	-	-0.2	2.3
Rubber manufactures nes	26	101.2	101.9	102.0	0.7	0.1	1.1
Wood & cork manufactures (excl furniture)	2	120.7	121.5	121.8	0.7	0.3	10.7
Paper manufactures	40	99.8	101.7	102.0	1.9	0.3	2.5
Textile manufactures	20	97.0	97.4	99.6	0.4	2.3	-1.4
Non-metal mineral manufactures nes	31	93.7	94.1	94.4	0.4	0.4	0.4
Iron & steel	96	86.2	88.4	88.4	2.6	-	8.1
Non-ferrous metals	76	109.7	104.2	102.1	-5.0	-2.0	-0.4
Manufactures of metals nes	90	99.2	100.1	100.3	0.9	0.2	1.0
Machinery & Transport Equipment	4,595	94.4	94.7	95.0	0.3	0.3	0.3
Pow er-generating machinery & equipment	188	108.4	107.6	107.7	-0.8	0.1	1.7
Machinery specialized for particular industries	397	93.3	94.1	92.4	0.9	-1.8	-1.0
Metal w orking machinery	28	109.7	111.6	116.3	1.7	4.2	7.3
General industrial machinery	243	102.6	102.7	102.8	0.1	0.1	-0.4
Office machines & data-processing machines	680	96.3	97.1	97.9	0.9	0.8	-1.4
Telecommunication apparatus	336	72.9	73.3	73.6	0.6	0.4	-8.4
Electrical machinery apparatus nes, electrical parts	2,582	93.8	93.9	94.3	0.1	0.5	2.0
Road vehicles	141	115.6	116.0	115.6	0.3	-0.3	-0.8
Miscellaneous Manufactured Articles	796	100.2	101.2	101.1	0.9	-0.1	-0.2
Prefab building, sanitary plumbing, lighting nes	6	138.7	138.2	138.9	-0.4	0.5	13.9
Furniture, bedding, mattresses, cushions & others	5	109.0	112.3	113.7	3.0	1.2	5.5
Travel goods, handbags & similar containers	11	131.3	132.9	136.5	1.2	2.8	9.5
Articles of apparel & clothing accessories	33	103.0	103.8	102.9	0.8	-1.0	-0.2
Footw ear	8	101.7	101.9	101.9	0.2	0.1	0.1
Professional scientific & controlling instruments	264	104.4	105.5	105.8	1.0	0.3	-0.3
Photographic & optical goods nes; w atches & clocks	86	94.1	93.4	93.0	-0.7	-0.4	-1.9
Miscellaneous manufactured articles nes	383	96.8	98.1	97.7	1.3	-0.4	-0.6

**Table 3 Import Price Index**

Section	All Items	Non-oil Items	Food & Live Animals	Beverages & Tobacco	Crude Materials	Mineral Fuels	Animal & Vegetable Oils, Fats & Waxes	Chemicals & Chemical Products	Manufactured Goods	Machinery & Transport Equipment	Misc. Manufactured Articles
Weights	10,000	6,684	215	86	83	3,316	37	694	635	4,205	729
<b>Index (2012=100)</b>											
2014	<b>94.5</b>	<b>97.3</b>	104.2	102.1	93.4	88.8	82.1	97.9	97.7	96.8	97.4
2015	<b>82.5</b>	<b>97.7</b>	101.5	104.7	88.0	52.0	70.1	92.0	94.2	98.7	100.5
2016	<b>78.1</b>	<b>95.7</b>	99.0	104.4	81.8	42.8	76.0	88.1	87.7	97.3	101.3
2017	<b>82.7</b>	<b>96.3</b>	100.6	105.1	84.0	55.4	78.8	90.8	91.6	97.0	101.2
2017											
Aug	<b>81.1</b>	<b>95.5</b>	100.5	105.6	83.0	52.2	75.4	89.2	91.5	96.2	100.6
Sep	<b>82.0</b>	<b>95.5</b>	101.0	105.4	83.7	54.7	77.5	89.9	91.9	95.9	100.7
Oct	<b>83.0</b>	<b>96.0</b>	100.5	104.8	83.8	56.7	77.2	91.2	93.1	96.5	100.8
Nov	<b>84.2</b>	<b>95.9</b>	100.7	104.6	83.7	60.6	75.8	91.0	92.9	96.4	100.5
Dec	<b>84.0</b>	<b>95.6</b>	100.8	104.5	83.3	60.8	72.7	91.7	92.7	96.0	99.6
2018											
Jan	<b>84.6</b>	<b>95.1</b>	99.5	103.8	83.4	63.3	74.0	91.0	92.7	95.4	99.4
Feb	<b>84.1</b>	<b>95.4</b>	99.4	103.9	83.6	61.4	73.7	92.0	93.2	95.7	99.3
Mar	<b>83.6</b>	<b>94.6</b>	97.2	103.8	83.7	61.4	72.7	92.2	93.2	94.6	99.1
Apr	<b>84.5</b>	<b>94.3</b>	97.2	103.9	83.9	64.8	72.3	92.7	93.9	93.9	99.3
May	<b>87.8</b>	<b>95.4</b>	98.2	104.3	84.4	72.3	72.1	93.9	95.6	95.0	99.7
Jun	<b>88.2</b>	<b>95.7</b>	98.6	105.2	85.1	73.1	70.4	95.0	96.1	95.2	99.6
Jul	<b>88.6</b>	<b>95.9</b>	100.0	105.7	83.9	73.8	68.7	95.0	96.4	95.5	99.6
Aug	<b>88.6</b>	<b>95.8</b>	100.6	105.7	83.0	74.0	67.7	94.9	96.4	95.3	99.3
<b>Percentage Change over same period of previous year (%)</b>											
2015	<b>-12.6</b>	<b>0.4</b>	-2.6	2.5	-5.8	-41.5	-14.6	-6.0	-3.6	2.0	3.2
2016	<b>-5.3</b>	<b>-2.0</b>	-2.5	-0.3	-7.1	-17.8	8.5	-4.3	-7.0	-1.4	0.8
2017	<b>5.8</b>	<b>0.6</b>	1.7	0.7	2.7	29.5	3.7	3.1	4.5	-0.3	-0.1
2017											
Aug	<b>5.0</b>	<b>1.4</b>	2.6	2.1	3.1	20.7	-0.6	3.8	5.4	0.8	-0.6
Sep	<b>4.9</b>	<b>0.8</b>	2.2	1.7	4.4	22.6	-1.6	3.2	5.5	-0.1	-0.6
Oct	<b>3.4</b>	<b>0.8</b>	0.4	0.5	3.3	13.5	-0.4	3.0	5.8	-	-1.0
Nov	<b>4.1</b>	<b>-0.9</b>	-0.3	-0.3	0.4	24.3	-6.1	1.6	3.0	-1.7	-1.8
Dec	<b>-0.4</b>	<b>-2.5</b>	-1.4	-1.1	-2.4	6.9	-14.8	-0.2	1.4	-3.4	-2.7
2018											
Jan	<b>-0.2</b>	<b>-2.6</b>	-2.0	-1.9	-2.7	8.2	-14.7	-2.2	1.1	-3.1	-3.2
Feb	<b>-0.1</b>	<b>-1.7</b>	-1.6	-1.6	-3.2	5.4	-13.8	-0.2	1.6	-2.1	-2.8
Mar	<b>1.5</b>	<b>-1.9</b>	-3.2	-1.1	-1.5	13.7	-11.2	0.9	2.0	-2.7	-2.5
Apr	<b>1.7</b>	<b>-2.7</b>	-2.9	-1.0	-1.0	16.9	-8.5	1.8	3.4	-4.2	-2.7
May	<b>6.6</b>	<b>-1.4</b>	-2.1	-0.9	0.7	35.7	-10.3	3.7	5.5	-3.1	-1.7
Jun	<b>9.1</b>	<b>-0.7</b>	-1.8	0.1	3.0	47.5	-9.8	5.9	6.2	-2.4	-1.7
Jul	<b>10.0</b>	<b>0.5</b>	-0.5	0.8	1.6	46.1	-9.6	7.2	6.8	-1.1	-0.9
Aug	<b>9.2</b>	<b>0.3</b>	0.1	0.2	-	41.9	-10.2	6.4	5.4	-0.9	-1.2



**Table 4 Export Price Index**

Section	All Items	Non-oil Items	Food & Live Animals	Beverages & Tobacco	Crude Materials	Mineral Fuels	Animal & Vegetable Oils, Fats & Waxes	Chemicals & Chemical Products	Manufactured Goods	Machinery & Transport Equipment	Misc. Manufactured Articles
Weights	10,000	7,395	124	87	60	2,605	8	1,344	381	4,595	796
<b>Index (2012=100)</b>											
2014	95.0	97.3	101.5	100.2	84.0	88.6	90.4	100.3	99.3	96.9	93.6
2015	88.5	99.8	103.6	107.2	74.8	56.3	84.6	97.5	96.3	101.2	97.8
2016	83.7	97.1	100.7	109.4	69.8	45.6	84.6	92.5	92.9	98.2	101.4
2017	86.1	96.2	98.6	107.5	80.2	57.3	89.0	93.3	95.4	96.1	102.0
2017											
Aug	84.4	94.9	96.9	106.7	78.9	54.9	85.9	91.5	95.4	94.6	101.3
Sep	85.0	94.6	96.8	105.9	79.7	57.9	85.8	91.8	95.9	94.1	101.0
Oct	86.1	95.5	98.0	105.9	79.2	59.3	87.0	93.1	96.2	95.1	101.3
Nov	86.6	95.0	98.6	105.7	78.5	62.7	87.1	93.0	95.7	94.5	101.1
Dec	86.5	94.7	98.2	105.2	78.8	63.4	86.6	93.8	95.3	93.9	100.2
2018											
Jan	86.8	94.4	99.1	104.9	79.4	65.2	85.8	94.4	96.2	93.3	99.5
Feb	86.2	94.4	98.0	105.4	79.8	63.1	85.5	94.6	96.7	93.2	99.1
Mar	86.0	94.1	97.6	105.3	79.4	62.8	85.6	94.0	95.9	93.0	99.2
Apr	87.0	94.2	96.7	104.0	79.5	66.7	85.6	94.1	96.8	93.1	99.2
May	89.3	95.2	96.9	105.7	80.6	72.7	86.2	95.3	97.6	94.1	99.8
Jun	89.9	95.5	97.0	106.1	80.5	73.9	85.6	95.9	97.8	94.4	100.2
Jul	90.5	96.0	98.1	106.3	80.8	74.8	88.1	96.7	97.7	94.7	101.2
Aug	90.7	96.1	99.2	106.7	78.8	75.1	87.6	96.8	97.5	95.0	101.1
<b>Percentage Change over same period of previous year (%)</b>											
2015	-6.9	2.6	2.1	7.0	-11.0	-36.4	-6.4	-2.8	-3.0	4.4	4.5
2016	-5.4	-2.7	-2.8	2.0	-6.7	-19.0	-	-5.2	-3.6	-3.0	3.6
2017	2.9	-0.9	-2.2	-1.7	14.9	25.7	5.2	0.9	2.7	-2.1	0.7
2017											
Aug	3.2	-	-1.9	-1.8	14.2	22.2	2.2	1.4	4.0	-0.8	0.2
Sep	2.4	-1.2	-1.6	-2.6	14.9	23.7	0.4	0.9	4.2	-2.5	-0.4
Oct	1.1	-1.5	-2.2	-4.0	10.9	15.1	0.5	2.0	3.7	-3.1	-0.4
Nov	0.8	-3.5	-3.3	-4.6	5.9	25.0	-0.1	-0.2	0.4	-5.3	-1.3
Dec	-2.4	-5.0	-4.3	-5.9	-1.6	10.0	-3.2	-2.1	-1.3	-6.5	-2.9
2018											
Jan	-2.3	-4.8	-0.7	-5.0	-4.4	9.5	-6.6	-0.2	-	-6.6	-4.4
Feb	-2.0	-3.9	-1.6	-4.3	-4.5	7.1	-8.9	-0.4	1.4	-5.3	-4.2
Mar	-0.7	-3.5	-1.0	-3.2	-4.8	13.7	-8.4	-1.0	0.6	-4.7	-3.5
Apr	0.7	-2.8	-3.3	-4.2	-2.5	18.2	-7.0	0.1	1.8	-3.9	-3.5
May	3.9	-1.8	-2.8	-2.0	1.0	32.5	-4.0	1.9	2.6	-3.1	-2.7
Jun	6.5	-0.3	-2.4	-2.3	3.1	42.5	-2.4	3.8	4.0	-1.5	-1.8
Jul	7.2	0.5	0.9	-0.5	4.6	41.5	1.3	5.4	3.2	-0.9	-0.6
Aug	7.4	1.4	2.4	-	-0.1	36.8	2.0	5.8	2.3	0.3	-0.2

### **NOTATIONS**

nes            not elsewhere specified  
-              nil or negligible

### **NOTES**

The Import and Export Price Indices report contains statistics that are the most recent available at the time of its preparation.

Some statistics, particularly those for the most recent time periods, are provisional and may be subject to revision in later issues.