



# Import & Export Price Indices August 2020

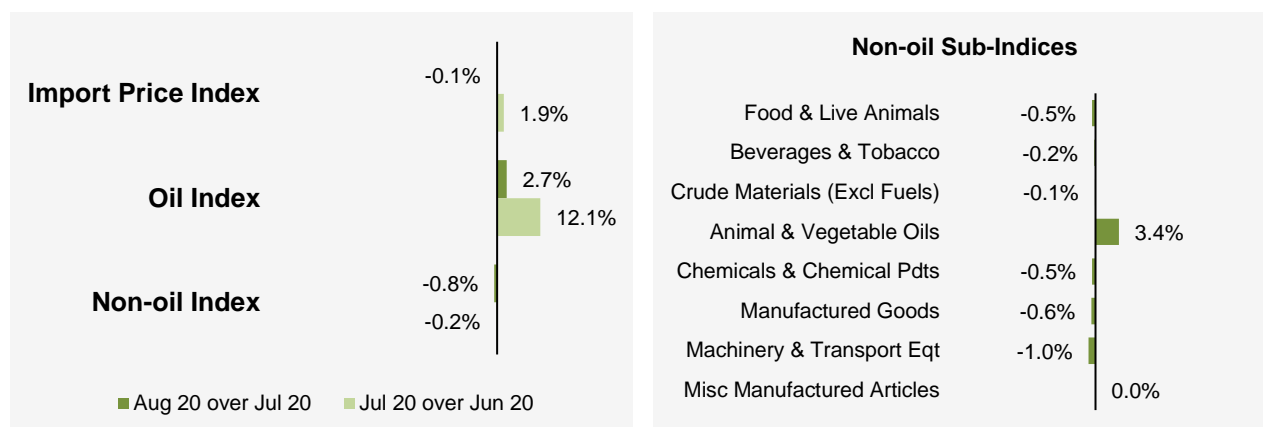
**IMPORT AND EXPORT PRICE INDICES, August 2020**  
**ISSN 2591-7463**

**© Department of Statistics, Ministry of Trade & Industry, Republic of Singapore**

Reproducing or quoting any part of this publication is permitted, provided this publication is accredited as the source. Please refer to the SingStat Website Terms of Use (<http://www.singstat.gov.sg/terms-of-use>) for more details on the conditions of use of this publication.

## Import Price Index (2018 = 100) August 2020

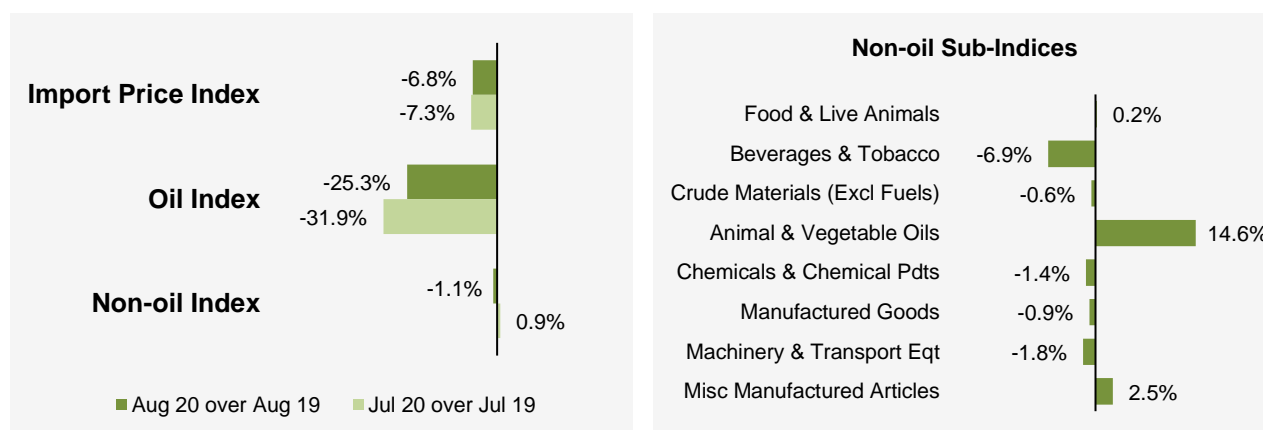
### Month-on-Month Change



The Import Price Index fell 0.1% in August 2020, in contrast to the 1.9% increase in July 2020. The Oil index rose 2.7%, less than the 12.1% increase in the previous month. The Non-oil index fell 0.8%, after the 0.2% decline in July 2020.

Among the Non-oil sub-indices, the declines were led by the Machinery & Transport Equipment (-1.0%) index due mainly to lower prices of integrated circuits, and the Chemicals & Chemical Products (-0.5%) index. The declines were partially moderated by the increase in the Animal & Vegetable Oils (3.4%) index, attributed mainly to higher prices of crude palm oil.

### Year-on-Year Change

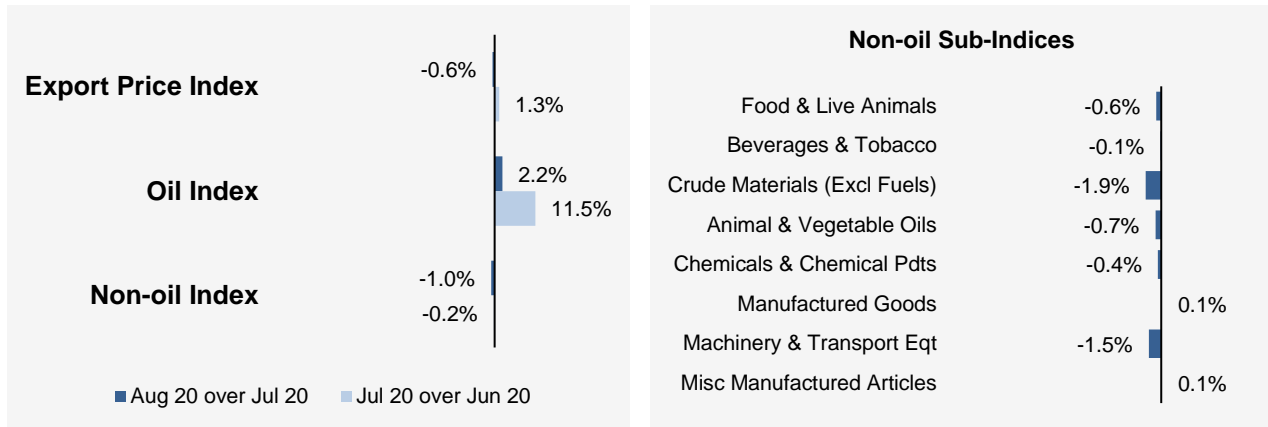


The Import Price Index fell 6.8% in August 2020 from a year ago, extending the 7.3% decline in July 2020. The Oil and Non-oil index declined 25.3% and 1.1% respectively.

For the Non-oil sub-indices, lower prices of Beverages & Tobacco (-6.9%), Machinery & Transport Equipment (-1.8%), Chemicals & Chemical Products (-1.4%), Manufactured Goods (-0.9%) and Crude Materials (-0.6%) were partially moderated by higher prices of Animal & Vegetable Oils (14.6%), Miscellaneous Manufactured Articles (2.5%) and Food & Live Animals (0.2%).

## Export Price Index (2018 = 100) August 2020

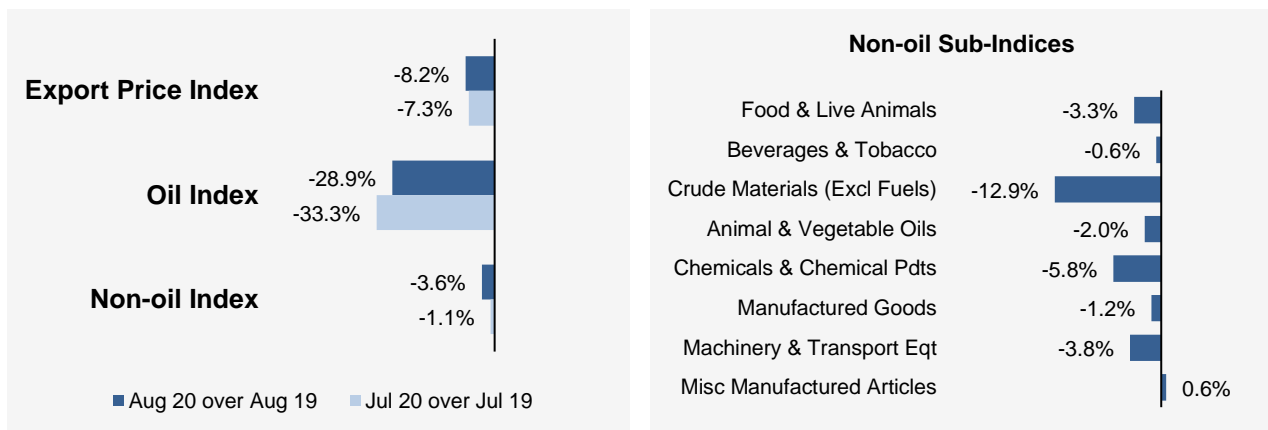
### Month-on-Month Change



The Export Price Index decreased 0.6% in August 2020, against the 1.3% increase in July 2020. The Oil index rose 2.2%, following the 11.5% increase in the previous month. The Non-oil index fell 1.0%, extending the 0.2% decline in July 2020.

Among the Non-oil sub-indices, the decreases led by the Machinery & Transport Equipment (-1.5%) index due mainly to lower prices of integrated circuits, and the Chemicals & Chemical Products (-0.4%) index were partially moderated by increases in the Miscellaneous Manufactured Articles (0.1%) and Manufactured Goods (0.1%) indices.

### Year-on-Year Change



The Export Price Index fell 8.2% in August 2020 from a year ago, following the 7.3% decrease in July 2020. The Oil and Non-oil indices declined 28.9% and 3.6% respectively.

For the Non-oil sub-indices, lower prices of Crude Materials (-12.9%), Chemicals & Chemical Products (-5.8%), Machinery & Transport Equipment (-3.8%), Food & Live Animals (-3.3%), Animal & Vegetable Oils (-2.0%), Manufactured Goods (-1.2%) and Beverages & Tobacco (-0.6%) were partially offset by higher prices of Miscellaneous Manufactured Articles (0.6%).

## Technical Note

The **Import Price Index (IPI)** is used primarily as an indicator to track the price trends of imported goods into Singapore. Prices of imports, valued at cif (cost, insurance and freight) are obtained monthly from major importers. The weighting pattern of the index is derived from import statistics for 2018.

The **Export Price Index (EPI)** measures changes in the price of all exports of merchandise from Singapore, including re-exports. In general, prices are obtained from major exporters of the selected commodities. Prices used in the index computation, are the prices of goods that physically leave Singapore's main ports of export; also termed as free on board prices. The weights of the index are derived from the distribution of export by commodity in 2018.

### Index Formula

The 2018-based series is compiled using the Laspeyres formula where the price and weight reference periods are aligned to the year 2018. The geometric mean formula has been adopted in the computation of unweighted elementary aggregate price indices. The arithmetic mean formula is applied in compiling indices at higher levels of aggregation where weights of specific sub-indices are available.

### Measurement of Changes in Price Indices

*Change over previous month* compares the index of the month with that of the preceding month. Such comparisons measure the change in the price index between two consecutive months. They serve as useful short-term indicators of the price movements.

*Change over same period of previous year* measures change in the index over a twelve-month period. Such comparisons compare the movement in the price index between similar months in two consecutive years.

### Linking the Old 2012-Based Price Index Series to the New 2018-Based Price Index Series

The IPI and EPI have been rebased from base year 2012 to base year 2018. To facilitate comparison of the historical price indices across base years, the old 2012-based series are linked to the new 2018-based series by re-scaling them via a Linked Coefficient. The Linked Coefficient is the ratio of the annual 2018-based index in 2018 to the annual 2012-based index in 2018.

Example : Linking the old Iron & Steel Index series for IPI prior to 2018, to the 2018-based Iron & Steel Index (2018=100)

#### 1) Calculate the linked coefficient

Year	Iron & Steel Index (2012=100)	Iron & Steel Index (2018=100)	Linked Coefficient
2018	93.4	100.0	$100.0 \div 93.4 = 1.071$

#### 2) Re-scaling the old series to the 2018-based series using the Linked Coefficient

Year	Month	Iron & Steel Index (2012=100)	Iron & Steel Index (2018=100)
2016	Dec	84.0	$84.0 \times 1.071 = 90.0$
2017	Jan	85.6	$85.6 \times 1.071 = 91.7$

### Linking Method for Maintaining the Old Index Reference Period

To continue the old 2012-based index series going forward in time, re-scale the new 2018-based index series to the old base year 2012 level, via a Linked Coefficient. The Linked Coefficient is the ratio of the annual 2012-based index in 2018 to the annual 2018-based index in 2018.

Example : Linking the new 2018-based Iron & Steel Index series for IPI to the 2012-based Iron & Steel Index (2012=100)

1) Calculate the linked coefficient

Year	Iron & Steel Index (2018=100)	Iron & Steel Index (2012=100)	Linked Coefficient
2018	100.0	93.4	$93.4 \div 100.0 = 0.934$

2) Re-scaling the new series to the 2012-based series using the Linked Coefficient

Year	Month	Iron & Steel Index (2018=100)	Iron & Steel Index (2012=100)
2019	Jan	98.6	$98.6 \times 0.934 = 92.1$
2019	Feb	102.4	$102.4 \times 0.934 = 95.6$

### Index Revision

The indices may be revised when late returns and amendments received from respondents are incorporated.

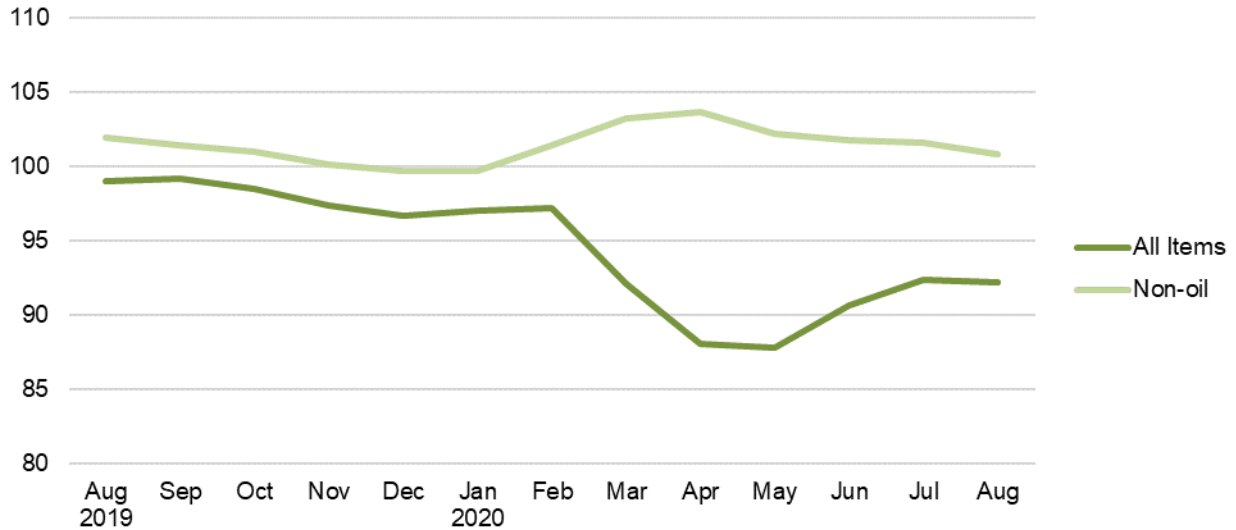
### Dissemination of Data

The Import and Export Price Indices are available on the SingStat Website ([www.singstat.gov.sg/tablebuilder](http://www.singstat.gov.sg/tablebuilder)). Excel tables for this month's report are available at <https://www.singstat.gov.sg/publications/economy/import-export-price-indices> or through the QR code below:

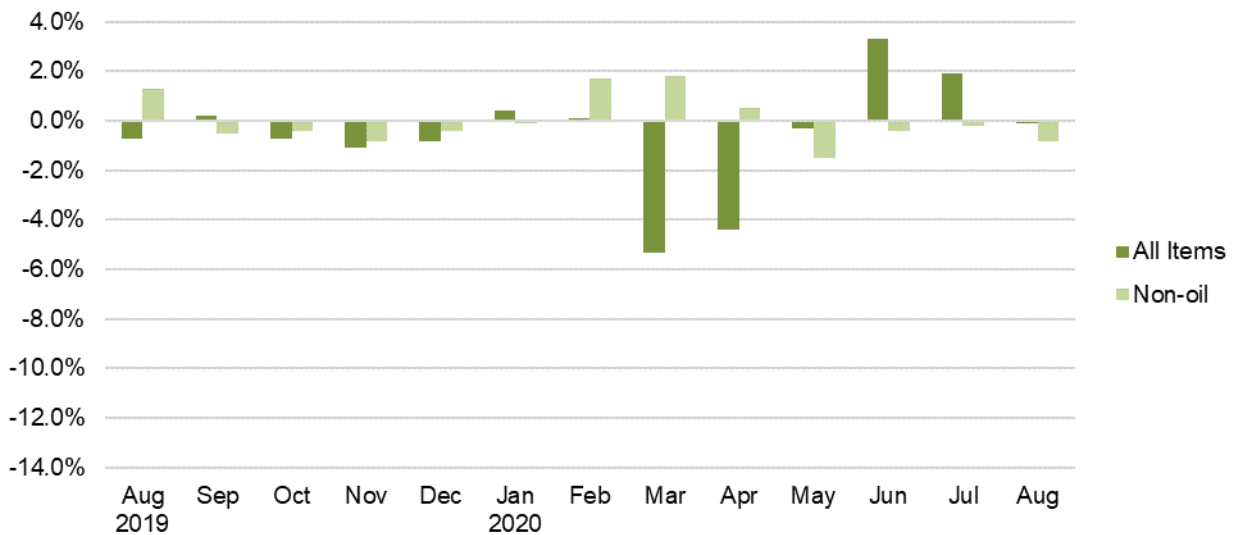


## Import Price Index (2018 = 100) August 2020

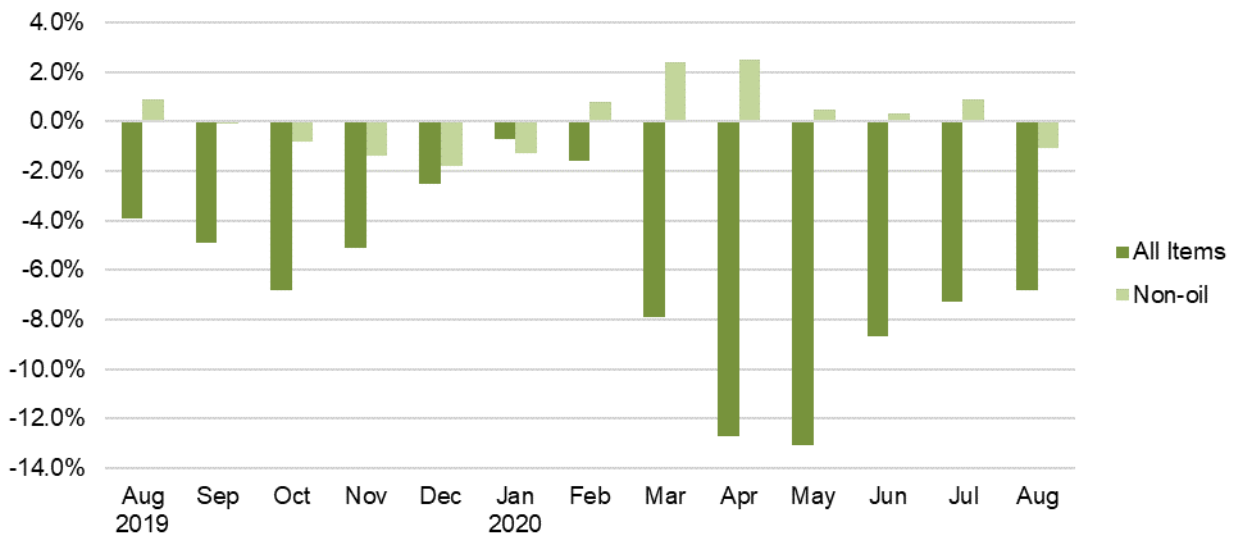
**Chart 1: Index**



**Chart 2: Month-on-Month Change**

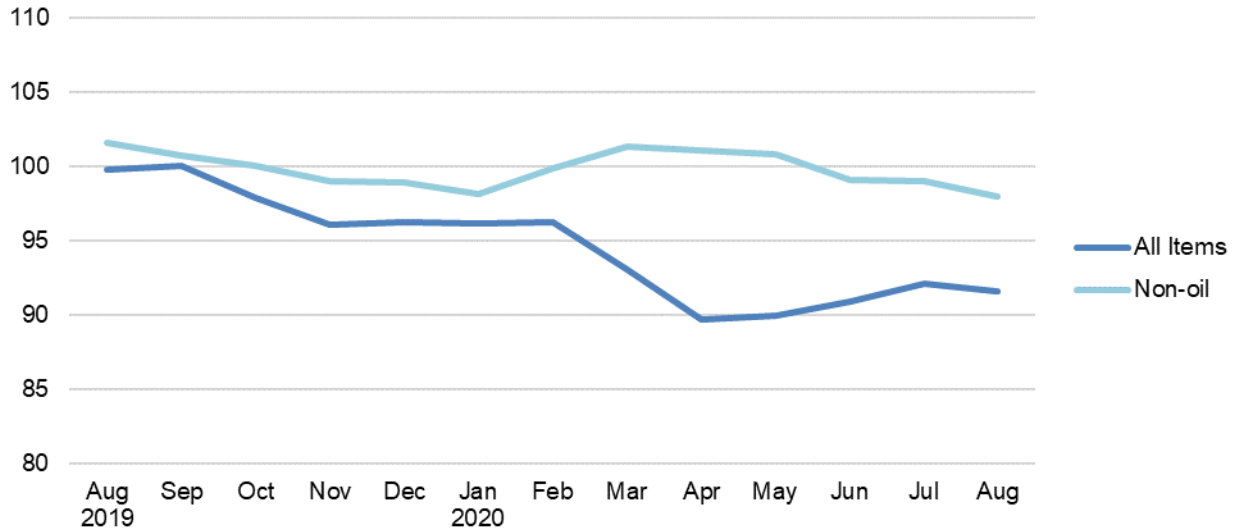


**Chart 3: Year-on-Year Change**

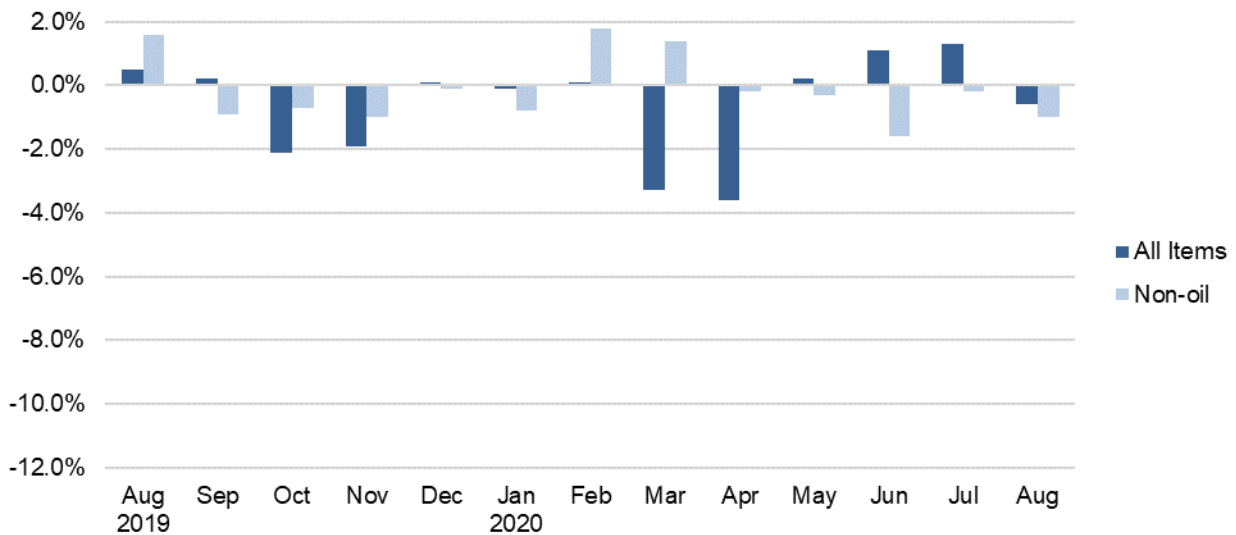


## Export Price Index (2018 = 100) August 2020

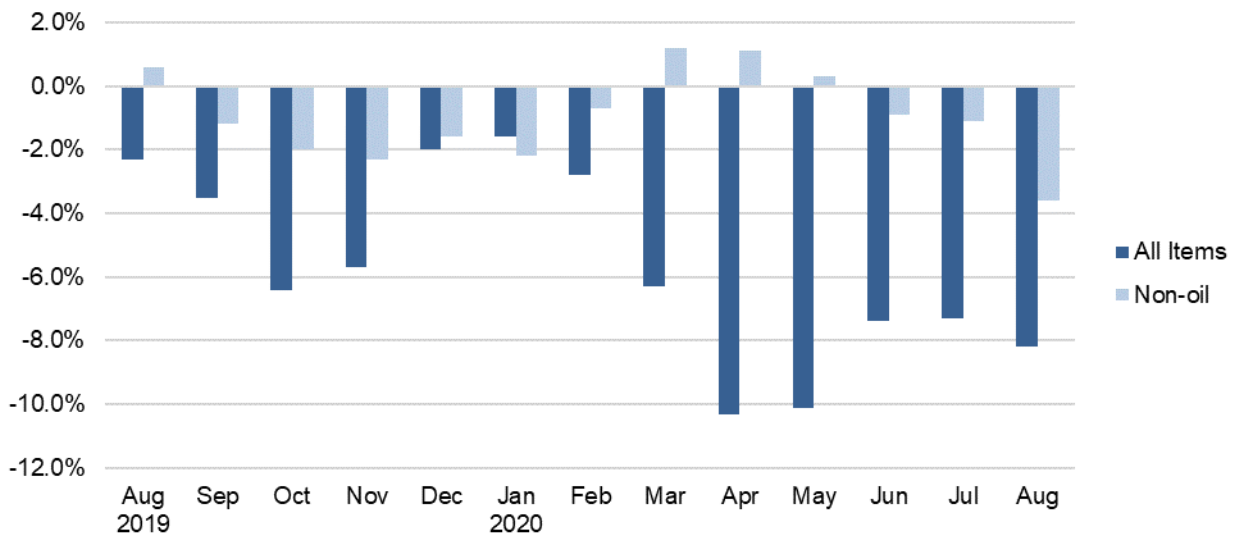
**Chart 4: Index**



**Chart 5: Month-on-Month Change**



**Chart 6: Year-on-Year Change**





**Table 1 Import Price Index**

**August 2020**

Commodity section / division	Weights	Index (2018=100)			% Change		
		Jun 2020	Jul 2020	Aug 2020	Jul 2020	Aug 2020	Aug 2020
					Jun 2020	Jul 2020	Aug 2019
<b>All Items</b>	<b>10,000</b>	<b>90.6</b>	<b>92.3</b>	<b>92.2</b>	<b>1.9</b>	<b>-0.1</b>	<b>-6.8</b>
<b>Non-oil Items</b>	<b>7,410</b>	<b>101.7</b>	<b>101.5</b>	<b>100.8</b>	<b>-0.2</b>	<b>-0.8</b>	<b>-1.1</b>
Food & Live Animals	247	102.9	103.3	102.8	0.4	-0.5	0.2
Live animals	9	101.6	100.0	100.2	-1.5	0.1	-0.1
Meat & meat preparations	31	107.0	107.1	106.5	0.1	-0.6	3.9
Dairy products & birds' eggs	30	110.0	110.2	110.1	0.2	-0.1	1.5
Fish seafood & preparations	34	97.9	95.8	94.1	-2.2	-1.8	-4.0
Cereals & cereal preparations	24	101.6	101.5	100.8	-0.2	-0.7	-0.4
Vegetables & fruit	48	104.5	107.1	106.0	2.6	-1.0	-1.5
Sugar, sugar preparations & honey	9	106.3	106.3	101.6	0.1	-4.5	2.7
Coffee, tea, cocoa, spices & manufactures	28	92.1	93.7	95.8	1.7	2.2	3.2
Animal feeding stuff (excl unmilled cereals)	4	98.6	100.6	100.5	2.0	-0.1	2.6
Miscellaneous food preparations	31	105.6	105.7	105.7	0.1	-	-0.7
Beverages & Tobacco	112	97.0	93.9	93.8	-3.1	-0.2	-6.9
Beverages	84	94.5	94.5	94.4	-	-0.2	-5.5
Tobacco & manufactures	28	104.5	92.1	91.9	-11.9	-0.2	-10.8
Crude Materials (excl fuels)	84	101.4	101.9	101.9	0.5	-0.1	-0.6
Oil seeds & oleaginous fruits	2	116.0	113.0	113.7	-2.6	0.6	9.0
Crude rubber	19	110.7	110.3	108.8	-0.4	-1.3	-1.6
Cork & wood	3	93.1	93.1	93.1	-	-	-5.7
Crude fertilizers & minerals	30	101.8	101.8	101.6	-0.1	-0.2	-0.4
Metalliferous ores & metal scrap	17	88.9	93.1	94.7	4.7	1.7	0.6
Crude animal & vegetable materials nes	13	104.0	102.9	102.8	-1.0	-0.1	-0.6
Mineral Fuels, Lubricants & Related Materials	2,590	58.8	66.0	67.7	12.1	2.7	-25.3
Petroleum & products & related materials	2,431	59.6	66.8	68.5	11.9	2.6	-23.8
Gas	159	46.5	53.7	56.3	15.6	4.9	-45.1
Animal & Vegetable Oils, Fats & Waxes	27	96.6	98.1	101.5	1.6	3.4	14.6
Fixed vegetable fats & oils	27	96.6	98.1	101.5	1.6	3.4	14.6
Chemicals & Chemical Products	888	96.6	98.1	97.6	1.5	-0.5	-1.4
Organic chemicals	216	89.0	90.1	89.2	1.2	-1.0	-5.7
Inorganic chemicals	35	105.0	107.1	107.3	2.0	0.2	2.3
Dyeing, tanning & colouring materials	33	108.0	107.3	106.7	-0.7	-0.5	-2.1
Medicinal & pharmaceutical products	101	102.7	102.7	103.7	-	1.0	0.3
Essential oils & perfume; toilet cleaning products	147	101.6	109.5	108.4	7.8	-1.0	9.2
Plastics in primary forms	164	85.6	85.4	85.4	-0.3	-	-10.0
Plastics in non-primary forms	38	104.5	104.1	103.6	-0.4	-0.5	0.5
Chemical materials & products nes	154	103.7	103.2	102.3	-0.5	-0.9	0.8
Manufactured Goods	505	99.6	99.7	99.1	0.1	-0.6	-0.9
Rubber manufactures nes	25	98.9	103.2	100.6	4.3	-2.6	5.2
Paper manufactures	51	93.0	91.3	90.1	-1.8	-1.4	-7.3
Textile manufactures	26	102.9	102.8	100.3	-	-2.4	-2.2
Non-metal mineral manufactures nes	60	104.7	103.9	103.2	-0.8	-0.7	1.8
Iron & steel	131	97.6	96.8	96.3	-0.8	-0.6	-3.7
Non-ferrous metals	84	99.7	102.7	104.1	3.0	1.4	4.9
Manufactures of metals nes	128	101.1	100.7	99.9	-0.4	-0.8	-1.4
Machinery & Transport Equipment	4,690	102.1	101.6	100.5	-0.5	-1.0	-1.8
Power-generating machinery & equipment	526	112.8	112.4	111.4	-0.3	-0.9	5.0
Machinery specialized for particular industries	306	103.3	102.8	101.5	-0.4	-1.3	-1.2
Metal working machinery	23	104.8	104.6	102.8	-0.1	-1.7	4.2
General industrial machinery	281	103.8	103.3	102.5	-0.4	-0.8	0.7
Office machines & data-processing machines	457	97.2	99.2	96.9	2.0	-2.2	-4.0
Telecommunication apparatus	390	89.4	87.9	87.0	-1.6	-1.1	-10.5
Electrical machinery apparatus nes, electrical parts	2,542	102.6	101.6	100.7	-0.9	-0.9	-2.0
Road vehicles	164	99.3	98.6	99.2	-0.7	0.6	-1.7
Miscellaneous Manufactured Articles	857	106.7	106.7	106.7	-	-	2.5
Prefab building, sanitary plumbing, lighting nes	12	100.6	100.6	100.6	-	-	-0.1
Furniture, bedding, mattresses, cushions & others	26	105.4	106.6	106.0	1.2	-0.6	1.5
Travel goods, handbags & similar containers	54	102.2	102.1	101.9	-0.1	-0.2	-2.7
Articles of apparel & clothing accessories	79	101.8	101.6	101.2	-0.2	-0.4	0.2
Footwear	24	100.3	100.3	99.7	-0.1	-0.6	-
Professional scientific & controlling instruments	275	106.6	106.3	105.1	-0.3	-1.1	-0.9
Photographic & optical goods nes; watches & clocks	106	104.7	105.2	105.0	0.4	-0.2	3.2
Miscellaneous manufactured articles nes	283	110.8	110.9	112.2	0.1	1.2	7.6

Figures may not sum to total due to rounding.

Table 2 Export Price Index

August 2020

Commodity section / division	Weights	Index (2018=100)			% Change		
					Jul 2020	Aug 2020	Aug 2020
		Jun 2020	Jul 2020	Aug 2020	Jun 2020	Jul 2020	Aug 2019
<b>All Items</b>	<b>10,000</b>	<b>90.9</b>	<b>92.1</b>	<b>91.6</b>	<b>1.3</b>	<b>-0.6</b>	<b>-8.2</b>
<b>Non-oil Items</b>	<b>8,022</b>	<b>99.1</b>	<b>98.9</b>	<b>97.9</b>	<b>-0.2</b>	<b>-1.0</b>	<b>-3.6</b>
Food & Live Animals	236	93.9	95.1	94.5	1.3	-0.6	-3.3
Dairy products & birds' eggs	5	104.3	102.9	101.0	-1.3	-1.9	-0.7
Fish seafood & preparations	9	90.2	91.2	89.6	1.1	-1.8	-5.8
Cereals & cereal preparations	7	97.7	97.7	97.3	0.1	-0.5	-2.4
Vegetables & fruit	8	92.8	90.8	90.7	-2.1	-0.2	-2.3
Sugar, sugar preparations & honey	3	102.8	100.9	101.1	-1.8	0.2	-1.1
Coffee, tea, cocoa, spices & manufactures	26	105.9	105.4	104.8	-0.4	-0.6	-0.1
Animal feeding stuff (excl unmilled cereals)	7	116.2	115.7	114.1	-0.4	-1.4	4.7
Miscellaneous food preparations	171	90.8	92.6	92.2	2.0	-0.5	-4.3
Beverages & Tobacco	103	103.8	102.2	102.0	-1.6	-0.1	-0.6
Beverages	75	103.3	101.1	101.4	-2.1	0.4	-0.5
Tobacco & manufactures	28	105.2	105.0	103.6	-0.2	-1.3	-0.8
Crude Materials (excl fuels)	91	82.9	79.2	77.6	-4.6	-1.9	-12.9
Crude rubber	35	87.6	75.1	73.5	-14.3	-2.1	-21.2
Pulp and waste paper	26	76.3	80.9	75.8	6.0	-6.4	-10.6
Metalliferous ores & metal scrap	26	81.4	80.6	82.6	-1.0	2.5	-4.9
Crude animal & vegetable materials nes	4	94.4	94.3	93.9	-0.1	-0.4	-1.6
Mineral Fuels, Lubricants & Related Materials	1,978	57.7	64.4	65.8	11.5	2.2	-28.9
Petroleum & products & related materials	1,978	57.7	64.4	65.8	11.5	2.2	-28.9
Animal & Vegetable Oils, Fats & Waxes	5	102.5	99.1	98.4	-3.3	-0.7	-2.0
Fixed vegetable fats & oils	5	102.5	99.1	98.4	-3.3	-0.7	-2.0
Chemicals & Chemical Products	1,525	89.9	89.6	89.2	-0.3	-0.4	-5.8
Organic chemicals	428	81.5	81.4	80.1	-0.1	-1.5	-10.9
Inorganic chemicals	14	109.4	109.7	111.7	0.3	1.8	6.8
Dyeing, tanning & colouring materials	37	100.3	99.8	97.7	-0.6	-2.0	-5.5
Medicinal & pharmaceutical products	250	98.4	98.5	97.7	-	-0.7	0.9
Essential oils & perfume; toilet cleaning products	232	98.7	98.5	98.3	-0.2	-0.3	-2.1
Plastics in primary forms	355	79.1	78.6	80.2	-0.6	2.0	-12.2
Plastics in non-primary forms	29	108.3	108.2	108.2	-0.1	-	6.5
Chemical materials & products nes	181	101.1	100.1	98.5	-1.0	-1.5	-0.4
Manufactured Goods	318	97.1	98.1	98.2	1.0	0.1	-1.2
Rubber manufactures nes	22	100.0	99.5	98.9	-0.5	-0.6	-1.2
Paper manufactures	41	98.6	98.5	97.4	-0.2	-1.1	-2.8
Textile manufactures	19	102.0	102.1	101.6	0.1	-0.5	-0.7
Non-metal mineral manufactures nes	14	101.0	100.7	99.6	-0.3	-1.0	-0.7
Iron & steel	66	96.2	95.3	95.6	-1.0	0.4	-7.2
Non-ferrous metals	67	89.5	95.6	97.2	6.9	1.6	4.0
Manufactures of metals nes	89	100.3	100.2	100.0	-0.1	-0.1	0.5
Machinery & Transport Equipment	4,836	101.6	101.5	99.9	-0.2	-1.5	-3.8
Power-generating machinery & equipment	418	102.5	102.1	100.9	-0.4	-1.1	-0.5
Machinery specialized for particular industries	437	101.3	102.4	98.5	1.1	-3.7	-15.8
Metal working machinery	25	101.2	101.4	100.5	0.2	-0.9	-1.5
General industrial machinery	212	103.0	102.9	102.4	-0.2	-0.4	1.5
Office machines & data-processing machines	467	104.4	104.1	101.3	-0.3	-2.7	-1.5
Telecommunication apparatus	366	92.3	91.5	89.9	-0.9	-1.8	-6.6
Electrical machinery apparatus nes, electrical parts	2,814	102.1	101.9	100.7	-0.2	-1.1	-2.8
Road vehicles	98	104.6	106.0	105.4	1.3	-0.5	2.0
Miscellaneous Manufactured Articles	908	104.1	104.1	104.2	-0.1	0.1	0.6
Prefab building, sanitary plumbing, lighting nes	3	104.7	105.6	105.0	0.8	-0.6	5.6
Furniture, bedding, mattresses, cushions & others	5	103.1	103.1	102.3	-	-0.8	0.1
Travel goods, handbags & similar containers	37	104.5	96.8	97.5	-7.4	0.8	-0.8
Articles of apparel & clothing accessories	40	114.1	113.6	113.8	-0.5	0.2	2.9
Footwear	14	96.2	95.8	94.5	-0.4	-1.3	-5.9
Professional scientific & controlling instruments	365	94.4	93.9	92.9	-0.5	-1.0	-7.0
Photographic & optical goods nes; watches & clocks	98	103.6	104.0	103.7	0.4	-0.2	1.8
Miscellaneous manufactured articles nes	345	113.7	114.8	116.2	1.0	1.2	7.7

Figures may not sum to total due to rounding.

**Table 3 Import Price Index**

Section	All Items	Non-oil Items	Food & Live Animals	Beverages & Tobacco	Crude Materials	Mineral Fuels	Animal & Vegetable Oils, Fats & Waxes	Chemicals & Chemical Products	Manufactured Goods	Machinery & Transport Equipment	Misc. Manufactured Articles
Weights	<b>10,000</b>	<b>7,410</b>	247	112	84	2,590	27	888	505	4,690	857
<b>Index (2018=100)</b>											
2016	<b>90.1</b>	<b>100.4</b>	99.5	99.6	97.8	61.5	110.6	93.8	92.3	102.4	101.8
2017	<b>95.3</b>	<b>101.0</b>	101.2	100.2	100.5	79.7	114.7	96.7	96.4	102.2	101.6
2018	<b>100.0</b>	<b>100.0</b>	100.0	100.0	100.0	100.0	100.0	100.0	100.0	100.0	100.0
2019	<b>99.0</b>	<b>100.9</b>	101.5	100.4	101.2	93.4	90.4	98.6	99.9	101.3	102.0
2019											
Aug	<b>99.0</b>	<b>101.9</b>	102.6	100.7	102.4	90.6	88.6	98.9	100.0	102.3	104.1
Sep	<b>99.1</b>	<b>101.4</b>	102.6	100.3	101.2	92.7	89.1	98.8	100.5	101.5	103.9
Oct	<b>98.4</b>	<b>100.9</b>	102.5	100.0	100.8	91.4	89.5	98.2	100.0	101.1	103.4
Nov	<b>97.4</b>	<b>100.1</b>	101.6	99.7	100.7	89.5	93.7	97.3	99.6	100.2	102.4
Dec	<b>96.6</b>	<b>99.7</b>	102.2	99.5	101.1	87.8	98.9	96.4	99.5	99.7	102.2
2020											
Jan	<b>97.0</b>	<b>99.6</b>	103.0	101.3	101.7	89.5	102.9	96.2	98.1	99.7	102.3
Feb	<b>97.2</b>	<b>101.4</b>	103.1	102.3	102.7	85.1	101.6	98.1	99.9	101.4	104.3
Mar	<b>92.0</b>	<b>103.2</b>	103.2	104.0	103.6	60.3	99.0	98.9	100.5	103.6	106.8
Apr	<b>88.0</b>	<b>103.7</b>	104.5	104.1	102.0	43.1	96.7	97.6	100.4	104.4	108.0
May	<b>87.7</b>	<b>102.1</b>	104.4	97.0	101.8	46.5	94.2	96.6	100.2	102.4	107.8
Jun	<b>90.6</b>	<b>101.7</b>	102.9	97.0	101.4	58.8	96.6	96.6	99.6	102.1	106.7
Jul	<b>92.3</b>	<b>101.5</b>	103.3	93.9	101.9	66.0	98.1	98.1	99.7	101.6	106.7
Aug	<b>92.2</b>	<b>100.8</b>	102.8	93.8	101.9	67.7	101.5	97.6	99.1	100.5	106.7
<b>Percentage Change over same period of previous year (%)</b>											
2017	<b>5.8</b>	<b>0.6</b>	1.7	0.7	2.7	29.5	3.7	3.1	4.5	-0.3	-0.1
2018	<b>4.9</b>	<b>-1.0</b>	-1.2	-0.2	-0.5	25.5	-12.8	3.4	3.7	-2.1	-1.6
2019	<b>-1.0</b>	<b>0.9</b>	1.5	0.4	1.2	-6.6	-9.6	-1.4	-0.1	1.3	2.0
2019											
Aug	<b>-3.9</b>	<b>0.9</b>	1.7	-0.2	0.8	-16.7	-9.5	-2.1	-0.8	1.2	3.6
Sep	<b>-4.9</b>	<b>-0.1</b>	1.5	-0.6	-	-17.5	-7.3	-2.5	0.1	-0.2	3.2
Oct	<b>-6.8</b>	<b>-0.8</b>	1.3	-0.9	-	-21.7	-5.1	-3.5	-0.6	-1.0	2.6
Nov	<b>-5.1</b>	<b>-1.4</b>	0.8	-1.3	-	-15.3	3.6	-3.7	-0.4	-1.9	2.1
Dec	<b>-2.5</b>	<b>-1.8</b>	1.2	-1.4	0.7	-4.5	9.6	-3.8	-0.6	-2.5	1.8
2020											
Jan	<b>-0.7</b>	<b>-1.3</b>	1.7	0.5	2.0	1.3	12.7	-2.9	-1.3	-1.9	1.4
Feb	<b>-1.6</b>	<b>0.8</b>	2.9	1.7	2.6	-9.2	12.0	-0.6	-0.5	0.5	3.5
Mar	<b>-7.9</b>	<b>2.4</b>	3.0	3.3	3.3	-38.4	10.4	-0.2	-0.1	2.4	6.2
Apr	<b>-12.7</b>	<b>2.5</b>	4.3	3.4	0.4	-56.8	7.2	-2.0	0.4	2.7	7.3
May	<b>-13.1</b>	<b>0.5</b>	3.4	-3.9	-1.1	-53.1	5.7	-2.9	-0.2	0.1	6.2
Jun	<b>-8.7</b>	<b>0.3</b>	1.1	-3.9	-0.6	-36.6	10.3	-2.6	-	0.1	4.7
Jul	<b>-7.3</b>	<b>0.9</b>	1.0	-6.0	0.5	-31.9	13.8	-0.3	0.5	0.7	4.4
Aug	<b>-6.8</b>	<b>-1.1</b>	0.2	-6.9	-0.6	-25.3	14.6	-1.4	-0.9	-1.8	2.5

**Table 4 Export Price Index**

Section	All Items	Non-oil Items	Food & Live Animals	Beverages & Tobacco	Crude Materials	Mineral Fuels	Animal & Vegetable Oils, Fats & Waxes	Chemicals & Chemical Products	Manufactured Goods	Machinery & Transport Equipment	Misc. Manufactured Articles
Weights	<b>10,000</b>	<b>8,022</b>	236	103	91	1,978	5	1,525	318	4,836	908
<b>Index (2018=100)</b>											
2016	<b>94.2</b>	<b>101.8</b>	102.2	103.4	88.0	64.7	97.7	96.8	95.6	104.2	100.8
2017	<b>96.9</b>	<b>100.9</b>	100.0	101.7	101.1	81.4	102.8	97.7	98.2	102.0	101.5
2018	<b>100.0</b>	<b>100.0</b>	100.0	100.0	100.0	100.0	100.0	100.0	100.0	100.0	100.0
2019	<b>98.6</b>	<b>100.1</b>	97.6	102.6	90.6	92.4	97.1	94.8	98.7	101.8	101.9
2019											
Aug	<b>99.8</b>	<b>101.6</b>	97.8	102.6	89.1	92.5	100.4	94.7	99.3	103.9	103.6
Sep	<b>100.0</b>	<b>100.7</b>	97.9	103.2	87.4	97.0	97.6	94.1	99.6	102.7	103.6
Oct	<b>97.9</b>	<b>100.0</b>	97.2	103.3	85.4	89.4	94.3	93.3	98.6	102.0	102.7
Nov	<b>96.1</b>	<b>99.0</b>	97.0	102.4	82.3	84.3	94.9	92.8	97.9	100.8	101.5
Dec	<b>96.2</b>	<b>98.9</b>	95.7	102.9	81.6	85.3	97.9	91.8	97.5	101.1	101.3
2020											
Jan	<b>96.1</b>	<b>98.1</b>	94.9	103.5	82.6	88.0	99.7	91.0	97.0	100.3	100.7
Feb	<b>96.2</b>	<b>99.9</b>	97.5	105.5	82.2	81.3	105.4	93.0	97.5	102.0	102.7
Mar	<b>93.0</b>	<b>101.3</b>	96.1	106.3	82.4	59.4	110.8	93.4	97.3	103.7	105.6
Apr	<b>89.7</b>	<b>101.1</b>	93.0	107.4	82.0	43.5	106.5	92.2	96.7	103.9	105.6
May	<b>89.9</b>	<b>100.7</b>	94.6	106.7	83.5	45.9	105.3	90.6	96.9	103.8	105.4
Jun	<b>90.9</b>	<b>99.1</b>	93.9	103.8	82.9	57.7	102.5	89.9	97.1	101.6	104.1
Jul	<b>92.1</b>	<b>98.9</b>	95.1	102.2	79.2	64.4	99.1	89.6	98.1	101.5	104.1
Aug	<b>91.6</b>	<b>97.9</b>	94.5	102.0	77.6	65.8	98.4	89.2	98.2	99.9	104.2
<b>Percentage Change over same period of previous year (%)</b>											
2017	<b>2.9</b>	<b>-0.9</b>	-2.2	-1.7	14.9	25.7	5.2	0.9	2.7	-2.1	0.7
2018	<b>3.2</b>	<b>-0.9</b>	-	-1.7	-1.1	22.9	-2.7	2.3	1.9	-1.9	-1.5
2019	<b>-1.4</b>	<b>0.1</b>	-2.4	2.6	-9.4	-7.6	-2.9	-5.2	-1.3	1.8	1.9
2019											
Aug	<b>-2.3</b>	<b>0.6</b>	-4.3	2.6	-13.0	-13.3	0.3	-6.9	-0.5	3.0	3.4
Sep	<b>-3.5</b>	<b>-1.2</b>	-3.3	1.9	-14.4	-11.8	-2.6	-8.1	-0.1	0.4	2.9
Oct	<b>-6.4</b>	<b>-2.0</b>	-4.5	1.5	-17.6	-22.2	-5.8	-9.1	-2.2	0.3	-
Nov	<b>-5.7</b>	<b>-2.3</b>	-4.3	-0.1	-20.5	-19.0	-4.7	-8.6	-1.8	-0.1	-1.1
Dec	<b>-2.0</b>	<b>-1.6</b>	-4.5	1.0	-20.9	-3.8	-0.7	-7.4	-1.5	0.6	-0.9
2020											
Jan	<b>-1.6</b>	<b>-2.2</b>	-4.9	1.0	-15.4	1.2	0.6	-5.9	-1.4	-1.1	-1.1
Feb	<b>-2.8</b>	<b>-0.7</b>	-1.7	2.9	-14.8	-11.8	9.1	-3.3	-1.8	-	1.0
Mar	<b>-6.3</b>	<b>1.2</b>	-1.8	4.2	-13.8	-38.0	14.0	-3.0	-2.1	2.5	4.1
Apr	<b>-10.3</b>	<b>1.1</b>	-3.3	5.0	-13.7	-56.6	10.2	-4.0	-2.5	2.5	4.9
May	<b>-10.1</b>	<b>0.3</b>	-2.8	4.1	-11.6	-53.3	8.7	-6.4	-1.9	2.1	3.7
Jun	<b>-7.4</b>	<b>-0.9</b>	-3.9	1.4	-9.4	-36.3	7.9	-5.3	-1.0	-0.1	2.8
Jul	<b>-7.3</b>	<b>-1.1</b>	-3.0	-	-12.4	-33.3	0.4	-5.0	-0.1	-0.4	2.8
Aug	<b>-8.2</b>	<b>-3.6</b>	-3.3	-0.6	-12.9	-28.9	-2.0	-5.8	-1.2	-3.8	0.6

**NOTATIONS**

- nes not elsewhere specified
- nil or negligible

**NOTES**

The Import and Export Price Indices report contains statistics that are the most recent available at the time of its preparation.

Some statistics, particularly those for the most recent time periods, are provisional and may be subject to revision in later issues.