



# Import & Export Price Indices August 2021

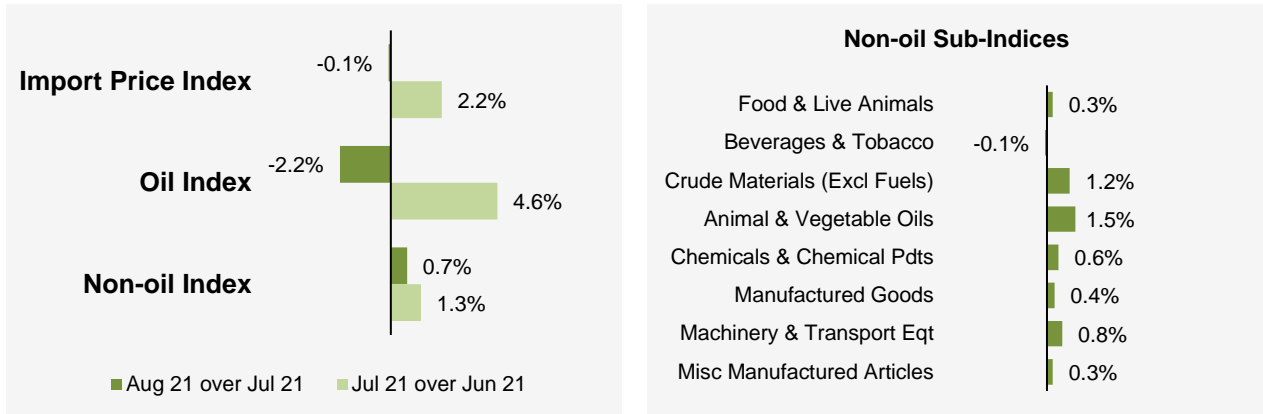
**IMPORT AND EXPORT PRICE INDICES, August 2021**  
**ISSN 2591-7463**

**© Department of Statistics, Ministry of Trade & Industry, Republic of Singapore**

Reproducing or quoting any part of this publication is permitted, provided this publication is accredited as the source. Please refer to the SingStat Website Terms of Use (<http://www.singstat.gov.sg/terms-of-use>) for more details on the conditions of use of this publication.

## Import Price Index (2018 = 100) August 2021

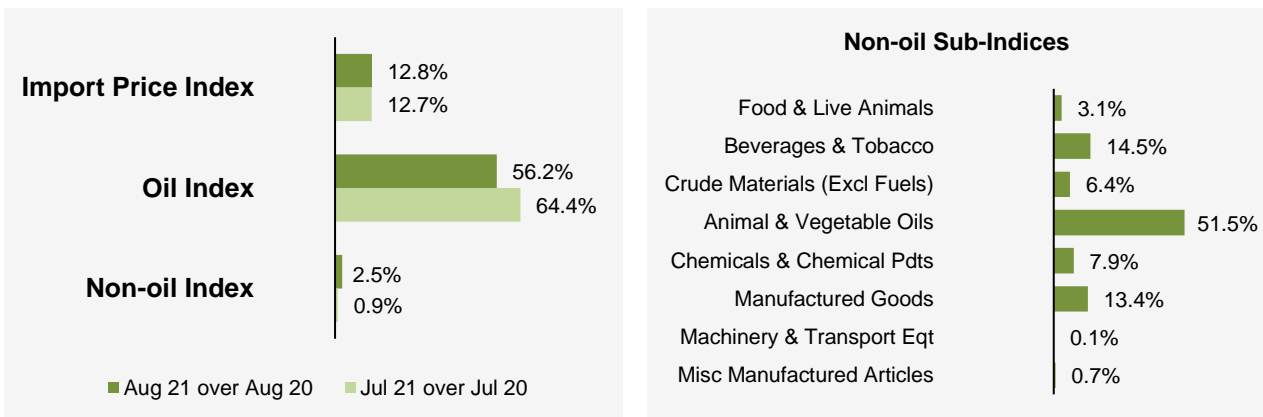
### Month-on-Month Change



The Import Price Index fell 0.1% in August 2021, reversing the 2.2% increase in July 2021. The Oil index dropped 2.2%, in contrast to the 4.6% increase in the previous month. The Non-oil index rose 0.7% in August 2021, extending the 1.3% gain in July 2021.

Among the Non-oil sub-indices, the increases led by the Machinery & Transport Equipment (0.8%), Chemicals & Chemical Products (0.6%) and Miscellaneous Manufactured Articles (0.3%) indices were partially moderated by the decline in the Beverages & Tobacco (-0.1%) index.

### Year-on-Year Change

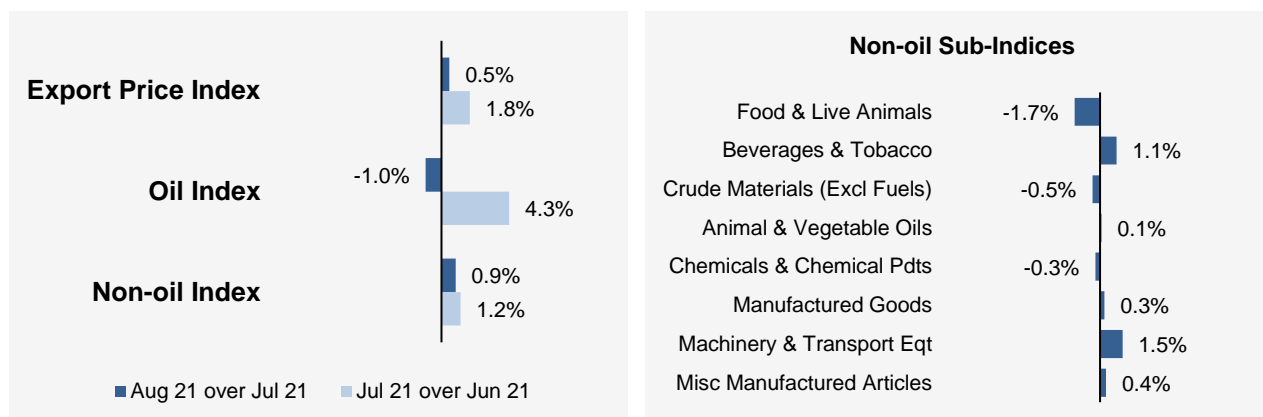


The Import Price Index rose 12.8% in August 2021 from a year ago, extending the 12.7% gain in July 2021. The Oil and Non-oil indices increased 56.2% and 2.5% respectively.

All Non-oil sub-indices rose, registering higher prices of Animal & Vegetable Oils (51.5%), Beverages & Tobacco (14.5%), Manufactured Goods (13.4%), Chemicals & Chemical Products (7.9%), Crude Materials (6.4%), Food & Live Animals (3.1%), Miscellaneous Manufactured Articles (0.7%) and Machinery & Transport Equipment (0.1%).

## Export Price Index (2018 = 100) August 2021

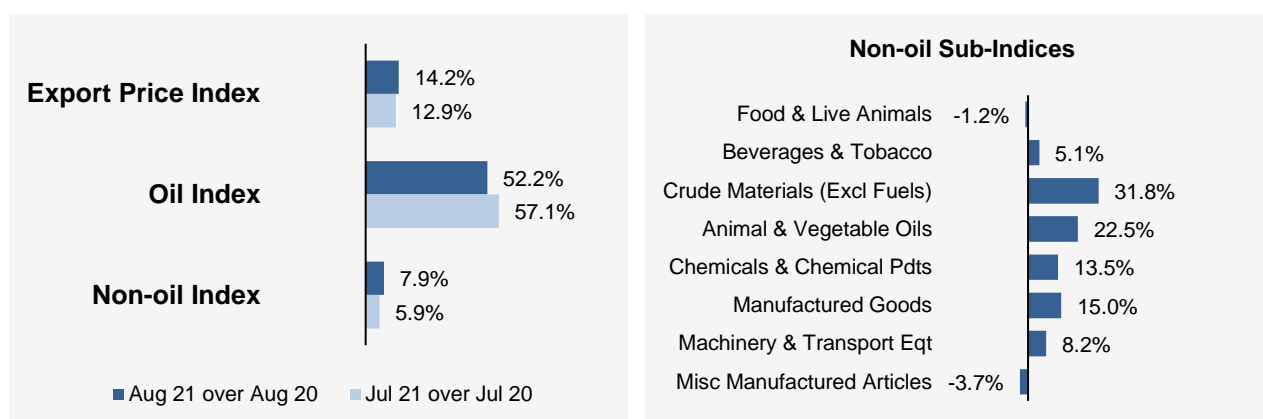
### Month-on-Month Change



The Export Price Index increased 0.5% in August 2021, following the 1.8% rise in July 2021. The Oil index fell 1.0%, against the 4.3% increase in the previous month. The Non-oil index grew by 0.9% in August 2021, extending the 1.2% gain in July 2021.

Among the Non-oil sub-indices, the increases were led by the Machinery & Transport Equipment (1.5%) index, due mainly to higher prices of semiconductor memory, and the Miscellaneous Manufactured Articles (0.4%) index. The increases were partially moderated by declines in the Food & Live Animals (-1.7%) index, due mainly to lower prices of miscellaneous food preparations, and the Chemicals & Chemical Products (-0.3%) index.

### Year-on-Year Change



The Export Price Index increased 14.2% in August 2021 from a year ago, following the 12.9% rise in July 2021. The Oil and Non-oil indices went up 52.2% and 7.9% respectively.

For the Non-oil sub-indices, higher prices of Crude Materials (31.8%), Animal & Vegetable Oils (22.5%), Manufactured Goods (15.0%), Chemicals & Chemical Products (13.5%), Machinery & Transport Equipment (8.2%) and Beverages & Tobacco (5.1%) were partially offset by lower prices of Miscellaneous Manufactured Articles (-3.7%) and Food & Live Animals (-1.2%).

## Technical Note

The **Import Price Index (IPI)** is used primarily as an indicator to track the price trends of imported goods into Singapore. Prices of imports, valued at cif (cost, insurance and freight) are obtained monthly from major importers. The weighting pattern of the index is derived from import statistics for 2018.

The **Export Price Index (EPI)** measures changes in the price of all exports of merchandise from Singapore, including re-exports. In general, prices are obtained from major exporters of the selected commodities. Prices used in the index computation, are the prices of goods that physically leave Singapore's main ports of export; also termed as free on board prices. The weights of the index are derived from the distribution of export by commodity in 2018.

### Index Formula

The 2018-based series is compiled using the Laspeyres formula where the price and weight reference periods are aligned to the year 2018. The geometric mean formula has been adopted in the computation of unweighted elementary aggregate price indices. The arithmetic mean formula is applied in compiling indices at higher levels of aggregation where weights of specific sub-indices are available.

### Measurement of Changes in Price Indices

*Change over previous month* compares the index of the month with that of the preceding month. Such comparisons measure the change in the price index between two consecutive months. They serve as useful short-term indicators of the price movements.

*Change over same period of previous year* measures change in the index over a twelve-month period. Such comparisons compare the movement in the price index between similar months in two consecutive years.

### Linking the Old 2012-Based Price Index Series to the New 2018-Based Price Index Series

The IPI and EPI have been rebased from base year 2012 to base year 2018. To facilitate comparison of the historical price indices across base years, the old 2012-based series are linked to the new 2018-based series by re-scaling them via a Linked Coefficient. The Linked Coefficient is the ratio of the annual 2018-based index in 2018 to the annual 2012-based index in 2018.

Example : Linking the old Iron & Steel Index series for IPI prior to 2018, to the 2018-based Iron & Steel Index (2018=100)

#### 1) Calculate the linked coefficient

Year	Iron & Steel Index (2012=100)	Iron & Steel Index (2018=100)	Linked Coefficient
2018	93.4	100.0	$100.0 \div 93.4 = 1.071$

#### 2) Re-scaling the old series to the 2018-based series using the Linked Coefficient

Year	Month	Iron & Steel Index (2012=100)	Iron & Steel Index (2018=100)
2016	Dec	84.0	$84.0 \times 1.071 = 90.0$
2017	Jan	85.6	$85.6 \times 1.071 = 91.7$

### Linking Method for Maintaining the Old Index Reference Period

To continue the old 2012-based index series going forward in time, re-scale the new 2018-based index series to the old base year 2012 level, via a Linked Coefficient. The Linked Coefficient is the ratio of the annual 2012-based index in 2018 to the annual 2018-based index in 2018.

Example : Linking the new 2018-based Iron & Steel Index series for IPI to the 2012-based Iron & Steel Index (2012=100)

1) Calculate the linked coefficient

Year	Iron & Steel Index (2018=100)	Iron & Steel Index (2012=100)	Linked Coefficient
2018	100.0	93.4	$93.4 \div 100.0 = 0.934$

2) Re-scaling the new series to the 2012-based series using the Linked Coefficient

Year	Month	Iron & Steel Index (2018=100)	Iron & Steel Index (2012=100)
2019	Jan	98.6	$98.6 \times 0.934 = 92.1$
2019	Feb	102.4	$102.4 \times 0.934 = 95.6$

### Index Revision

The indices may be revised when late returns and amendments received from respondents are incorporated.

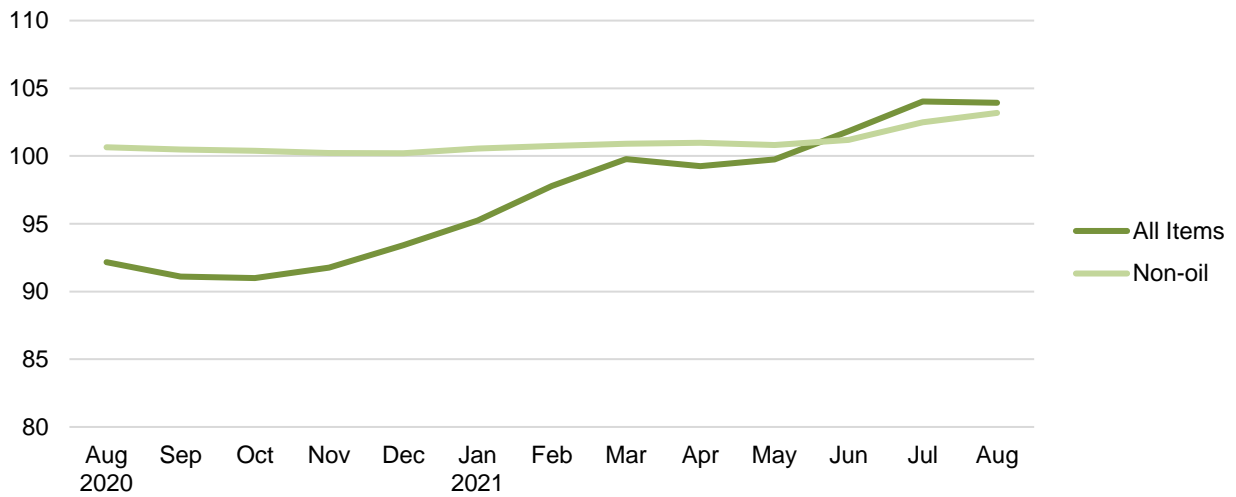
### Dissemination of Data

The Import and Export Price Indices are available on the SingStat Website ([www.singstat.gov.sg/tablebuilder](http://www.singstat.gov.sg/tablebuilder)). Excel tables for this month's report are available at <https://www.singstat.gov.sg/publications/economy/import-export-price-indices> or through the QR code below:

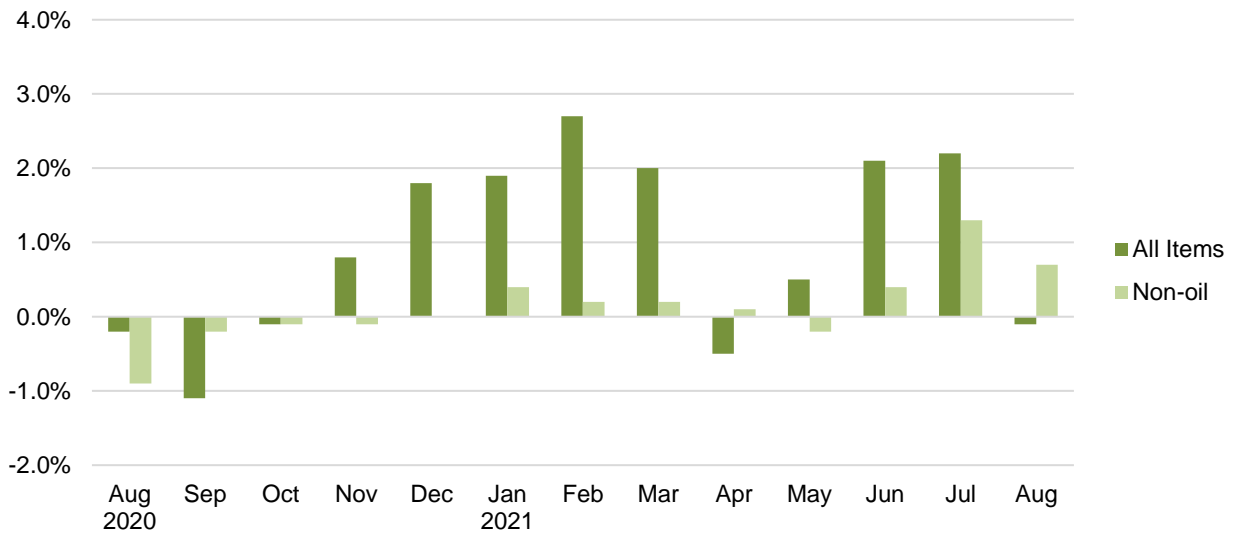


## Import Price Index (2018 = 100) August 2021

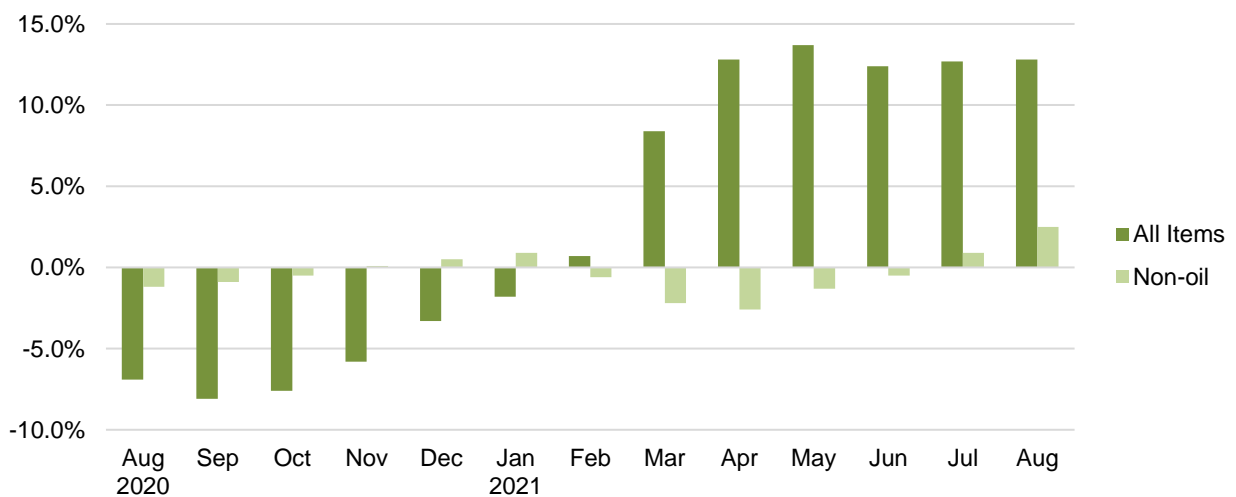
**Chart 1: Index**



**Chart 2: Month-on-Month Change**

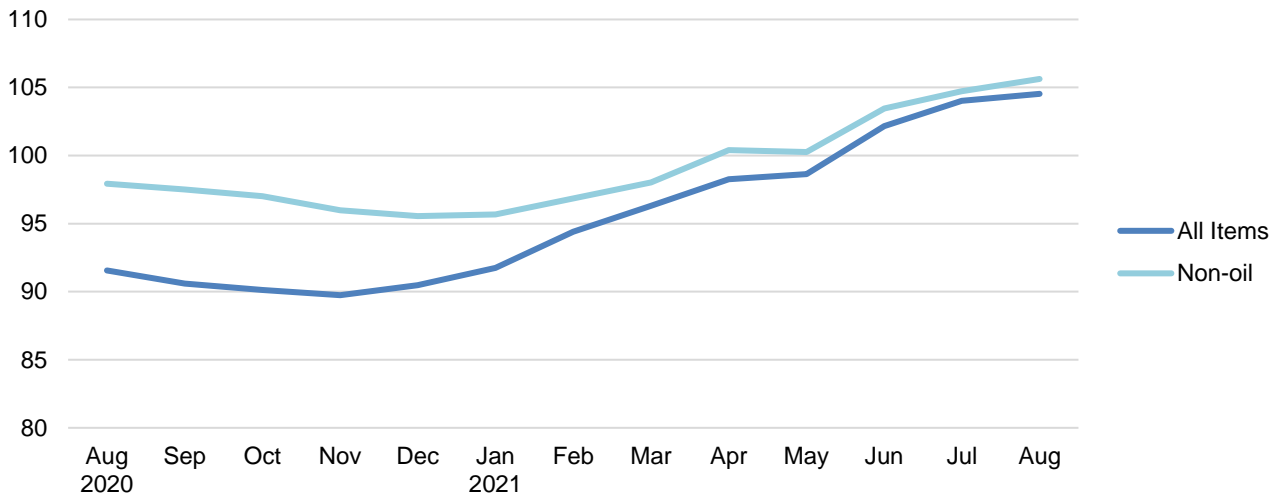


**Chart 3: Year-on-Year Change**

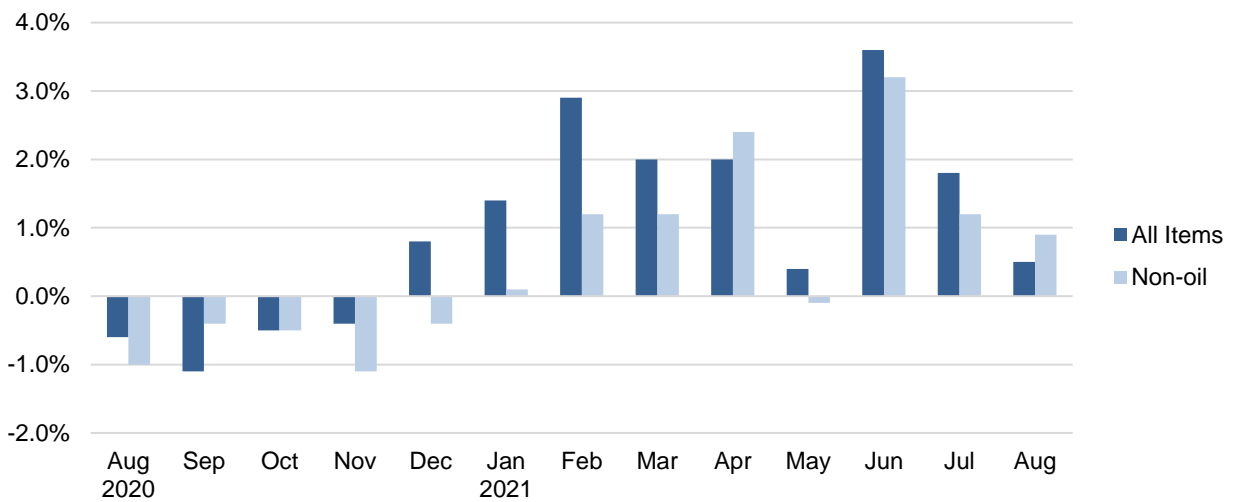


## Export Price Index (2018 = 100) August 2021

**Chart 4: Index**



**Chart 5: Month-on-Month Change**



**Chart 6: Year-on-Year Change**

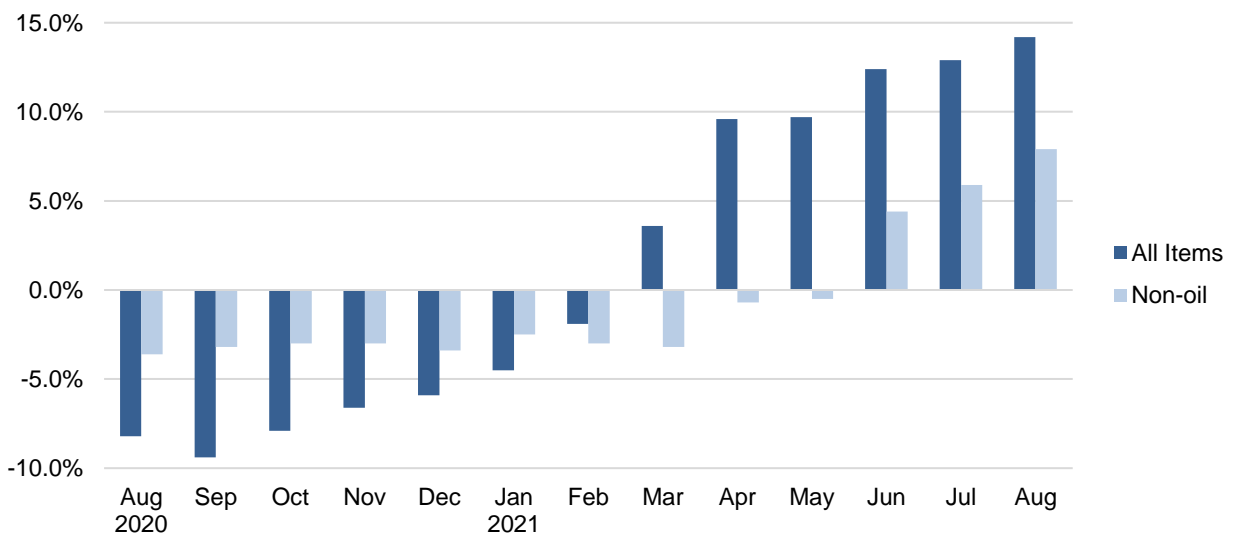




Table 1 Import Price Index

August 2021

Commodity section / division	Weights	Index (2018=100)			% Change		
					Jul 2021	Aug 2021	Aug 2021
		Jun 2021	Jul 2021	Aug 2021	Jun 2021	Jul 2021	Aug 2020
<b>All Items</b>	<b>10,000</b>	<b>101.8</b>	<b>104.0</b>	<b>103.9</b>	<b>2.2</b>	<b>-0.1</b>	<b>12.8</b>
<b>Non-oil Items</b>	<b>7,410</b>	<b>101.2</b>	<b>102.5</b>	<b>103.2</b>	<b>1.3</b>	<b>0.7</b>	<b>2.5</b>
Food & Live Animals	247	105.0	105.6	105.9	0.6	0.3	3.1
Live animals	9	102.1	100.8	101.5	-1.3	0.8	1.3
Meat & meat preparations	31	109.6	110.1	109.9	0.5	-0.2	3.4
Dairy products & birds' eggs	30	114.4	116.5	116.8	1.8	0.3	7.0
Fish seafood & preparations	34	98.0	96.6	96.4	-1.5	-0.2	2.5
Cereals & cereal preparations	24	98.6	98.3	97.8	-0.3	-0.5	-3.0
Vegetables & fruit	48	105.6	108.7	108.8	3.0	0.1	2.0
Sugar, sugar preparations & honey	9	115.1	116.3	116.6	1.0	0.3	14.8
Coffee, tea, cocoa, spices & manufactures	28	100.9	100.9	102.8	-	1.9	7.3
Animal feeding stuff (excl unmilled cereals)	4	103.3	103.7	103.5	0.3	-0.1	3.0
Miscellaneous food preparations	31	104.8	104.2	104.9	-0.5	0.7	-0.8
Beverages & Tobacco	112	107.2	107.6	107.4	0.3	-0.1	14.5
Beverages	84	108.4	108.6	108.5	0.3	-0.2	14.9
Tobacco & manufactures	28	103.6	104.2	104.2	0.6	-	13.4
Crude Materials (excl fuels)	84	105.4	105.6	106.9	0.2	1.2	6.4
Oil seeds & oleaginous fruits	2	117.5	120.7	120.7	2.7	-	6.2
Crude rubber	19	91.9	93.4	93.4	1.6	0.1	-14.1
Cork & wood	3	98.7	98.7	98.7	-	-	6.1
Crude fertilizers & minerals	30	102.2	103.4	103.5	1.2	-	1.8
Metalliferous ores & metal scrap	17	133.0	130.3	135.5	-2.0	4.0	43.1
Crude animal & vegetable materials nes	13	95.0	95.0	95.9	-	1.0	2.1
Mineral Fuels, Lubricants & Related Materials	2,590	103.7	108.4	106.1	4.6	-2.2	56.2
Petroleum & products & related materials	2,431	105.1	109.6	107.0	4.3	-2.4	55.8
Gas	159	82.7	90.4	92.1	9.3	1.9	63.6
Animal & Vegetable Oils, Fats & Waxes	27	148.4	152.1	154.3	2.5	1.5	51.5
Fixed vegetable fats & oils	27	148.4	152.1	154.3	2.5	1.5	51.5
Chemicals & Chemical Products	888	102.8	104.8	105.5	1.9	0.6	7.9
Organic chemicals	216	100.8	102.7	103.1	1.8	0.4	15.5
Inorganic chemicals	35	103.8	104.0	106.8	0.1	2.8	-2.5
Dyeing, tanning & colouring materials	33	105.6	106.7	107.9	1.0	1.2	2.0
Medicinal & pharmaceutical products	101	104.4	105.2	105.1	0.7	-0.1	1.0
Essential oils & perfume; toilet cleaning products	147	108.4	111.7	111.6	3.0	-0.1	4.6
Plastics in primary forms	164	102.9	104.6	105.8	1.7	1.2	22.0
Plastics in non-primary forms	38	102.6	104.6	104.9	2.0	0.2	1.3
Chemical materials & products nes	154	98.5	101.0	102.2	2.5	1.2	-0.8
Manufactured Goods	505	109.6	112.1	112.5	2.3	0.4	13.4
Rubber manufactures nes	25	97.4	98.2	98.6	0.8	0.5	-2.0
Paper manufactures	51	93.0	96.6	96.6	3.8	-	7.2
Textile manufactures	26	99.7	101.0	100.4	1.2	-0.5	0.1
Non-metal mineral manufactures nes	60	104.8	106.8	106.0	1.9	-0.7	2.7
Iron & steel	131	117.5	121.6	123.8	3.5	1.8	28.8
Non-ferrous metals	84	131.4	134.1	134.6	2.0	0.4	29.0
Manufactures of metals nes	128	100.4	101.6	101.0	1.2	-0.6	0.8
Machinery & Transport Equipment	4,690	98.4	99.6	100.4	1.2	0.8	0.1
Power-generating machinery & equipment	526	112.6	114.2	114.4	1.4	0.2	2.7
Machinery specialized for particular industries	306	98.8	100.3	100.4	1.6	0.1	-1.1
Metal working machinery	23	103.2	103.8	104.3	0.5	0.5	1.4
General industrial machinery	281	100.3	101.3	101.6	1.0	0.4	-0.8
Office machines & data-processing machines	457	93.3	94.6	96.1	1.4	1.6	-0.9
Telecommunication apparatus	390	93.2	91.6	91.7	-1.7	0.1	5.4
Electrical machinery apparatus nes, electrical parts	2,542	96.8	98.4	99.6	1.6	1.2	-0.8
Road vehicles	164	98.6	98.8	98.0	0.2	-0.8	-1.3
Miscellaneous Manufactured Articles	857	106.1	106.9	107.2	0.8	0.3	0.7
Prefab building, sanitary plumbing, lighting nes	12	105.7	105.7	105.7	-	-	5.1
Furniture, bedding, mattresses, cushions & others	26	108.1	108.6	108.8	0.5	0.2	2.6
Travel goods, handbags & similar containers	54	106.1	106.4	106.4	0.3	-	4.5
Articles of apparel & clothing accessories	79	101.7	102.2	102.3	0.5	0.1	1.0
Footwear	24	104.7	104.9	104.9	0.2	-	2.9
Professional scientific & controlling instruments	275	101.2	102.6	102.9	1.4	0.3	-1.1
Photographic & optical goods nes; watches & clocks	106	106.9	108.3	107.7	1.3	-0.5	2.6
Miscellaneous manufactured articles nes	283	111.7	112.1	112.8	0.4	0.7	0.5

Figures may not sum to total due to rounding.

**Table 2 Export Price Index**

**August 2021**

Commodity section / division	Weights	Index (2018=100)			% Change		
		Jun 2021	Jul 2021	Aug 2021	Jul 2021	Aug 2021	Aug 2021
					Jun 2021	Jul 2021	Aug 2020
<b>All Items</b>	<b>10,000</b>	<b>102.2</b>	<b>104.0</b>	<b>104.5</b>	<b>1.8</b>	<b>0.5</b>	<b>14.2</b>
<b>Non-oil Items</b>	<b>8,022</b>	<b>103.5</b>	<b>104.7</b>	<b>105.6</b>	<b>1.2</b>	<b>0.9</b>	<b>7.9</b>
Food & Live Animals	236	94.6	95.1	93.5	0.5	-1.7	-1.2
Dairy products & birds' eggs	5	42.0	44.0	44.2	4.9	0.3	-56.3
Fish seafood & preparations	9	84.5	88.4	91.1	4.6	3.1	1.7
Cereals & cereal preparations	7	95.3	96.2	97.3	0.9	1.1	-
Vegetables & fruit	8	95.0	95.9	96.2	1.0	0.2	5.8
Sugar, sugar preparations & honey	3	105.9	108.9	109.5	2.8	0.5	8.3
Coffee, tea, cocoa, spices & manufactures	26	108.6	110.0	111.3	1.4	1.2	6.3
Animal feeding stuff (excl unmilled cereals)	7	111.2	112.9	112.8	1.5	-	-1.1
Miscellaneous food preparations	171	93.6	93.6	90.9	-	-2.9	-1.4
Beverages & Tobacco	103	104.5	106.1	107.2	1.5	1.1	5.1
Beverages	75	105.9	107.6	109.1	1.6	1.4	7.6
Tobacco & manufactures	28	100.9	102.2	102.2	1.2	0.1	-1.3
Crude Materials (excl fuels)	91	96.5	102.8	102.3	6.5	-0.5	31.8
Crude rubber	35	79.6	91.7	91.9	15.2	0.2	24.8
Pulp and waste paper	26	97.7	102.3	101.8	4.7	-0.4	34.4
Metalliferous ores & metal scrap	26	118.5	120.0	119.1	1.3	-0.8	44.3
Crude animal & vegetable materials nes	4	95.2	92.6	88.6	-2.7	-4.4	-5.7
Mineral Fuels, Lubricants & Related Materials	1,978	96.9	101.1	100.1	4.3	-1.0	52.2
Petroleum & products & related materials	1,978	96.9	101.1	100.1	4.3	-1.0	52.2
Animal & Vegetable Oils, Fats & Waxes	5	117.9	120.5	120.6	2.2	0.1	22.5
Fixed vegetable fats & oils	5	117.9	120.5	120.6	2.2	0.1	22.5
Chemicals & Chemical Products	1,525	100.3	102.0	101.6	1.7	-0.3	13.5
Organic chemicals	428	102.5	106.0	105.1	3.3	-0.8	31.1
Inorganic chemicals	14	123.5	130.4	130.3	5.6	-	16.5
Dyeing, tanning & colouring materials	37	98.7	100.7	100.1	2.1	-0.6	2.5
Medicinal & pharmaceutical products	250	97.0	97.8	97.8	0.7	-	0.1
Essential oils & perfume; toilet cleaning products	232	100.2	100.5	100.6	0.3	0.1	2.4
Plastics in primary forms	355	100.5	100.2	99.6	-0.2	-0.6	22.3
Plastics in non-primary forms	29	113.7	114.6	114.4	0.7	-0.2	5.7
Chemical materials & products nes	181	95.6	99.8	100.2	4.4	0.4	1.7
Manufactured Goods	318	110.6	112.5	112.9	1.7	0.3	15.0
Rubber manufactures nes	22	98.4	99.8	99.8	1.4	-	0.8
Paper manufactures	41	98.6	99.7	99.6	1.1	-0.1	2.3
Textile manufactures	19	98.0	99.1	99.3	1.1	0.2	-2.3
Non-metal mineral manufactures nes	14	97.1	98.4	98.5	1.4	0.1	-1.2
Iron & steel	66	115.4	118.0	118.0	2.2	0.1	23.4
Non-ferrous metals	67	138.0	141.7	143.4	2.7	1.1	47.5
Manufactures of metals nes	89	99.9	100.7	100.7	0.8	-	0.7
Machinery & Transport Equipment	4,836	105.3	106.4	108.0	1.1	1.5	8.2
Power-generating machinery & equipment	418	99.2	100.9	100.4	1.7	-0.5	-0.5
Machinery specialized for particular industries	437	103.5	102.6	102.7	-0.9	0.1	5.6
Metal working machinery	25	98.3	99.3	99.5	1.0	0.2	-1.0
General industrial machinery	212	102.4	103.5	103.9	1.1	0.4	1.4
Office machines & data-processing machines	467	100.6	101.9	101.2	1.3	-0.6	-0.1
Telecommunication apparatus	366	90.6	93.0	93.9	2.7	1.0	4.5
Electrical machinery apparatus nes, electrical parts	2,814	109.4	110.6	113.3	1.1	2.4	12.4
Road vehicles	98	105.7	108.9	109.3	2.9	0.4	3.6
Miscellaneous Manufactured Articles	908	99.5	99.9	100.3	0.4	0.4	-3.7
Prefab building, sanitary plumbing, lighting nes	3	117.9	117.7	117.3	-0.2	-0.4	11.7
Furniture, bedding, mattresses, cushions & others	5	105.2	102.0	102.0	-3.1	-	-0.2
Travel goods, handbags & similar containers	37	97.9	98.8	98.4	0.9	-0.4	0.9
Articles of apparel & clothing accessories	40	113.6	112.4	114.1	-1.1	1.5	0.2
Footwear	14	93.0	94.8	94.9	1.9	0.1	0.4
Professional scientific & controlling instruments	365	89.1	90.2	90.3	1.2	0.1	-2.9
Photographic & optical goods nes; watches & clocks	98	103.6	104.3	104.9	0.6	0.6	1.1
Miscellaneous manufactured articles nes	345	107.9	107.7	108.3	-0.1	0.6	-6.8

Figures may not sum to total due to rounding.

**Table 3 Import Price Index**

Section	All Items	Non-oil Items	Food & Live Animals	Beverages & Tobacco	Crude Materials	Mineral Fuels	Animal & Vegetable Oils, Fats & Waxes	Chemicals & Chemical Products	Manufactured Goods	Machinery & Transport Equipment	Misc. Manufactured Articles
Weights	<b>10,000</b>	<b>7,410</b>	247	112	84	2,590	27	888	505	4,690	857
<b>Index (2018=100)</b>											
2017	<b>95.3</b>	<b>101.0</b>	101.2	100.2	100.5	79.7	114.7	96.7	96.4	102.2	101.6
2018	<b>100.0</b>	<b>100.0</b>	100.0	100.0	100.0	100.0	100.0	100.0	100.0	100.0	100.0
2019	<b>99.0</b>	<b>100.9</b>	101.5	100.4	101.2	93.4	90.4	98.6	99.9	101.3	102.0
2020	<b>92.0</b>	<b>101.3</b>	102.9	97.9	101.8	65.6	103.1	97.4	99.8	101.3	106.0
2020											
Aug	<b>92.2</b>	<b>100.6</b>	102.8	93.8	100.5	67.9	101.9	97.8	99.2	100.3	106.5
Sep	<b>91.1</b>	<b>100.5</b>	102.3	94.7	101.2	64.3	104.1	97.3	99.2	100.2	106.3
Oct	<b>91.0</b>	<b>100.4</b>	101.4	95.1	101.8	64.1	108.4	97.3	99.4	100.1	105.8
Nov	<b>91.8</b>	<b>100.2</b>	101.8	95.0	101.5	67.5	113.3	97.4	100.2	99.8	105.4
Dec	<b>93.4</b>	<b>100.2</b>	102.2	96.2	101.5	74.0	120.0	97.6	100.8	99.7	104.8
2021											
Jan	<b>95.2</b>	<b>100.6</b>	103.5	107.2	100.6	80.0	124.7	98.3	101.6	99.5	105.4
Feb	<b>97.8</b>	<b>100.7</b>	104.5	107.0	99.3	89.4	129.8	99.4	103.3	99.3	105.9
Mar	<b>99.8</b>	<b>100.9</b>	103.5	107.1	102.0	96.5	138.2	101.0	104.9	99.2	105.2
Apr	<b>99.3</b>	<b>101.0</b>	103.4	106.9	102.7	94.3	143.3	102.0	105.9	98.9	105.5
May	<b>99.8</b>	<b>100.8</b>	103.9	107.4	103.0	96.8	151.3	102.8	107.4	98.2	105.7
Jun	<b>101.8</b>	<b>101.2</b>	105.0	107.2	105.4	103.7	148.4	102.8	109.6	98.4	106.1
Jul	<b>104.0</b>	<b>102.5</b>	105.6	107.6	105.6	108.4	152.1	104.8	112.1	99.6	106.9
Aug	<b>103.9</b>	<b>103.2</b>	105.9	107.4	106.9	106.1	154.3	105.5	112.5	100.4	107.2
<b>Percentage Change over same period of previous year (%)</b>											
2018	<b>4.9</b>	<b>-1.0</b>	-1.2	-0.2	-0.5	25.5	-12.8	3.4	3.7	-2.1	-1.6
2019	<b>-1.0</b>	<b>0.9</b>	1.5	0.4	1.2	-6.6	-9.6	-1.4	-0.1	1.3	2.0
2020	<b>-7.0</b>	<b>0.3</b>	1.4	-2.5	0.6	-29.8	14.0	-1.2	-0.2	-	3.8
2020											
Aug	<b>-6.9</b>	<b>-1.2</b>	0.2	-6.9	-1.9	-25.1	15.1	-1.1	-0.8	-1.9	2.3
Sep	<b>-8.1</b>	<b>-0.9</b>	-0.4	-5.7	-	-30.6	16.8	-1.6	-1.3	-1.3	2.4
Oct	<b>-7.6</b>	<b>-0.5</b>	-1.0	-5.0	1.0	-29.8	21.2	-0.9	-0.6	-1.0	2.4
Nov	<b>-5.8</b>	<b>0.1</b>	0.2	-4.7	0.8	-24.6	21.0	0.1	0.7	-0.4	2.9
Dec	<b>-3.3</b>	<b>0.5</b>	0.1	-3.3	0.4	-15.7	21.3	1.2	1.3	-0.1	2.6
2021											
Jan	<b>-1.8</b>	<b>0.9</b>	0.5	5.8	-1.0	-10.6	21.2	2.1	3.6	-0.2	3.0
Feb	<b>0.7</b>	<b>-0.6</b>	1.3	4.6	-3.3	5.0	27.7	1.2	3.4	-2.1	1.6
Mar	<b>8.4</b>	<b>-2.2</b>	0.2	3.0	-1.5	60.2	39.7	2.1	4.4	-4.2	-1.5
Apr	<b>12.8</b>	<b>-2.6</b>	-1.1	2.7	0.7	118.5	48.1	4.5	5.4	-5.2	-2.3
May	<b>13.7</b>	<b>-1.3</b>	-0.5	10.6	1.1	107.9	60.6	6.4	7.2	-4.1	-2.0
Jun	<b>12.4</b>	<b>-0.5</b>	2.0	10.5	3.9	76.3	53.6	6.5	10.1	-3.6	-0.6
Jul	<b>12.7</b>	<b>0.9</b>	2.2	14.5	3.6	64.4	55.1	6.9	12.4	-1.9	0.2
Aug	<b>12.8</b>	<b>2.5</b>	3.1	14.5	6.4	56.2	51.5	7.9	13.4	0.1	0.7

**Table 4 Export Price Index**

Section	All Items	Non-oil Items	Food & Live Animals	Beverages & Tobacco	Crude Materials	Mineral Fuels	Animal & Vegetable Oils, Fats & Waxes	Chemicals & Chemical Products	Manufactured Goods	Machinery & Transport Equipment	Misc. Manufactured Articles
Weights	<b>10,000</b>	<b>8,022</b>	236	103	91	1,978	5	1,525	318	4,836	908
<b>Index (2018=100)</b>											
2017	<b>96.9</b>	<b>100.9</b>	100.0	101.7	101.1	81.4	102.8	97.7	98.2	102.0	101.5
2018	<b>100.0</b>	<b>100.0</b>	100.0	100.0	100.0	100.0	100.0	100.0	100.0	100.0	100.0
2019	<b>98.6</b>	<b>100.1</b>	97.6	102.6	90.6	92.4	97.1	94.8	98.7	101.8	101.9
2020	<b>91.7</b>	<b>98.6</b>	94.7	103.4	81.0	63.7	101.9	91.1	97.9	100.6	103.2
2020											
Aug	<b>91.6</b>	<b>97.9</b>	94.6	102.0	77.7	65.8	98.4	89.5	98.2	99.8	104.2
Sep	<b>90.6</b>	<b>97.5</b>	97.0	101.2	79.2	62.6	98.4	89.6	98.3	99.1	103.7
Oct	<b>90.1</b>	<b>97.0</b>	93.3	100.5	79.2	62.1	97.5	90.6	98.3	98.5	101.7
Nov	<b>89.7</b>	<b>96.0</b>	94.0	100.8	79.3	64.5	97.6	91.4	99.1	96.7	100.6
Dec	<b>90.5</b>	<b>95.6</b>	92.1	101.2	81.3	69.9	101.6	92.0	100.8	95.9	99.7
2021											
Jan	<b>91.7</b>	<b>95.7</b>	92.9	102.7	85.4	75.8	106.5	93.0	101.9	95.5	99.6
Feb	<b>94.4</b>	<b>96.8</b>	93.5	105.8	89.3	84.5	109.1	94.6	104.1	96.8	99.0
Mar	<b>96.3</b>	<b>98.0</b>	94.8	102.9	91.1	89.3	112.4	97.8	105.7	97.5	99.3
Apr	<b>98.3</b>	<b>100.4</b>	96.1	105.3	94.2	89.6	116.0	99.4	107.4	100.7	98.9
May	<b>98.6</b>	<b>100.3</b>	95.9	104.6	97.2	92.0	117.8	100.0	111.1	100.0	99.3
Jun	<b>102.2</b>	<b>103.5</b>	94.6	104.5	96.5	96.9	117.9	100.3	110.6	105.3	99.5
Jul	<b>104.0</b>	<b>104.7</b>	95.1	106.1	102.8	101.1	120.5	102.0	112.5	106.4	99.9
Aug	<b>104.5</b>	<b>105.6</b>	93.5	107.2	102.3	100.1	120.6	101.6	112.9	108.0	100.3
<b>Percentage Change over same period of previous year (%)</b>											
2018	<b>3.2</b>	<b>-0.9</b>	-	-1.7	-1.1	22.9	-2.7	2.3	1.9	-1.9	-1.5
2019	<b>-1.4</b>	<b>0.1</b>	-2.4	2.6	-9.4	-7.6	-2.9	-5.2	-1.3	1.8	1.9
2020	<b>-7.0</b>	<b>-1.5</b>	-3.0	0.8	-10.6	-31.0	4.9	-4.0	-0.8	-1.2	1.3
2020											
Aug	<b>-8.2</b>	<b>-3.6</b>	-3.3	-0.6	-12.8	-28.9	-2.0	-5.5	-1.2	-3.9	0.6
Sep	<b>-9.4</b>	<b>-3.2</b>	-0.9	-1.9	-9.3	-35.5	0.8	-4.8	-1.3	-3.5	0.2
Oct	<b>-7.9</b>	<b>-3.0</b>	-4.1	-2.8	-7.3	-30.5	3.4	-2.9	-0.3	-3.4	-1.0
Nov	<b>-6.6</b>	<b>-3.0</b>	-3.1	-1.6	-3.6	-23.5	2.8	-1.5	1.2	-4.1	-0.9
Dec	<b>-5.9</b>	<b>-3.4</b>	-3.8	-1.6	-0.4	-18.1	3.8	0.2	3.3	-5.2	-1.6
2021											
Jan	<b>-4.5</b>	<b>-2.5</b>	-2.1	-0.8	3.4	-13.8	6.8	2.2	5.1	-4.7	-1.1
Feb	<b>-1.9</b>	<b>-3.0</b>	-4.1	0.3	8.6	4.0	3.5	1.8	6.8	-5.1	-3.6
Mar	<b>3.6</b>	<b>-3.2</b>	-1.3	-3.1	10.5	50.3	1.5	4.8	8.6	-6.0	-5.9
Apr	<b>9.6</b>	<b>-0.7</b>	3.3	-2.0	14.9	106.1	8.9	7.8	11.2	-3.1	-6.4
May	<b>9.7</b>	<b>-0.5</b>	1.4	-1.9	16.5	100.7	11.8	10.4	14.7	-3.7	-5.8
Jun	<b>12.4</b>	<b>4.4</b>	0.8	0.7	16.4	67.9	15.0	11.6	14.0	3.6	-4.4
Jul	<b>12.9</b>	<b>5.9</b>	-	3.9	29.9	57.1	21.6	13.9	14.8	4.9	-4.0
Aug	<b>14.2</b>	<b>7.9</b>	-1.2	5.1	31.8	52.2	22.5	13.5	15.0	8.2	-3.7

**NOTATIONS**

- nes not elsewhere specified
- nil or negligible

**NOTES**

The Import and Export Price Indices report contains statistics that are the most recent available at the time of its preparation.

Some statistics, particularly those for the most recent time periods, are provisional and may be subject to revision in later issues.