



# Import & Export Price Indices December 2020

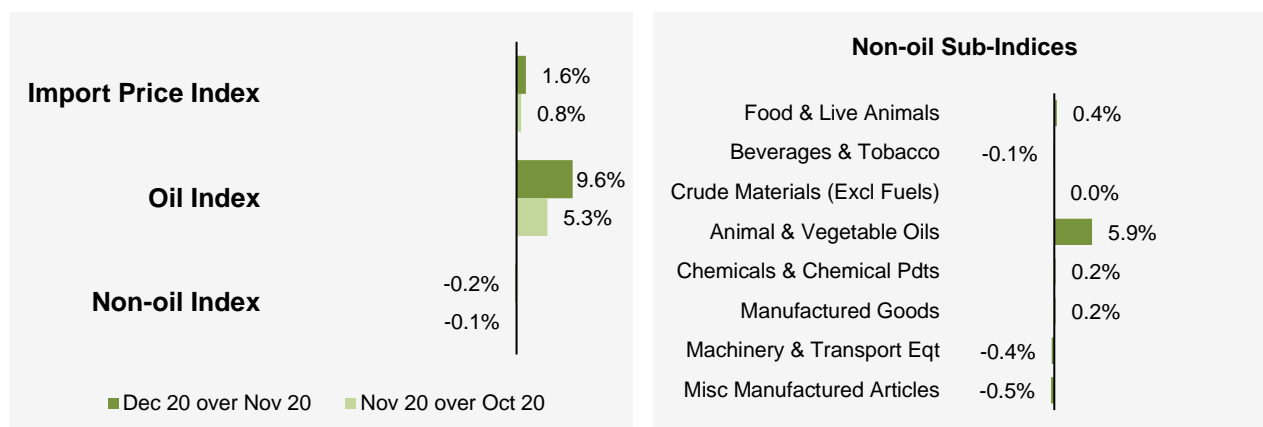
**IMPORT AND EXPORT PRICE INDICES, December 2020**  
**ISSN 2591-7463**

**© Department of Statistics, Ministry of Trade & Industry, Republic of Singapore**

Reproducing or quoting any part of this publication is permitted, provided this publication is accredited as the source. Please refer to the SingStat Website Terms of Use (<http://www.singstat.gov.sg/terms-of-use>) for more details on the conditions of use of this publication.

## Import Price Index (2018 = 100) December 2020

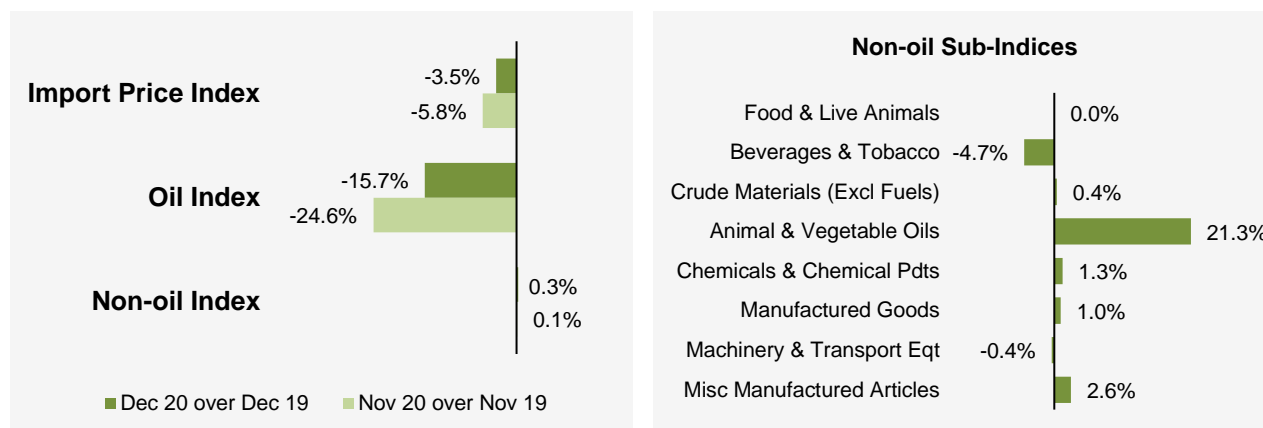
### Month-on-Month Change



The Import Price Index rose 1.6% in December 2020, extending the 0.8% increase in November 2020. The Oil index increased 9.6%, after rising 5.3% in the previous month. The Non-oil index fell 0.2%, continuing the 0.1% decline in November 2020.

Among the Non-oil sub-indices, the declines were led by the Miscellaneous Manufactured Articles (-0.5%) and Machinery & Transport Equipment (-0.4%) indices. The declines were partially moderated by increases in the Animal & Vegetable Oils (5.9%) index due mainly to higher prices of palm oil products, and the Chemicals & Chemical Products (0.2%) index.

### Year-on-Year Change



The Import Price Index fell 3.5% in December 2020 from a year ago, extending the 5.8% decline in November 2020. The Oil index declined 15.7% while the Non-oil index rose 0.3%.

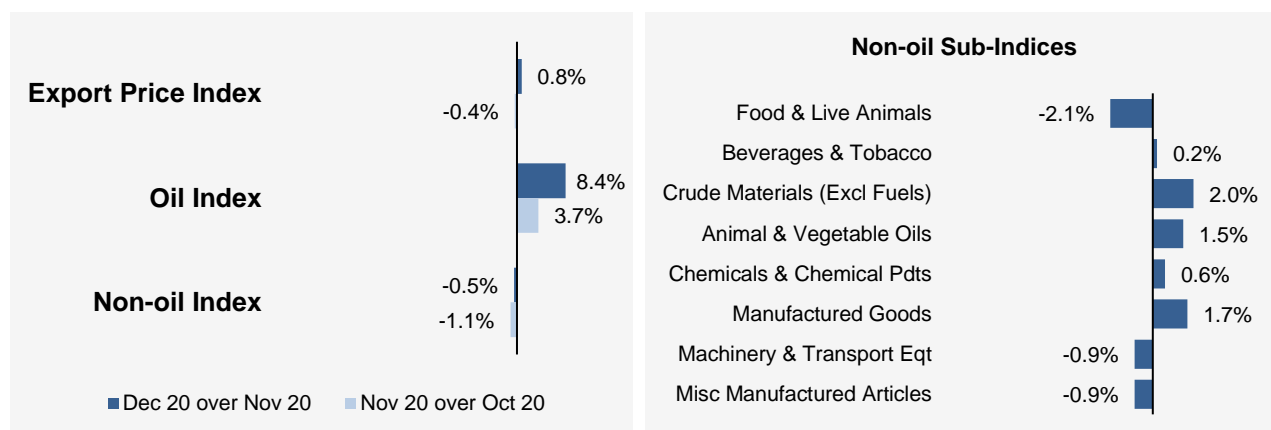
For the Non-oil sub-indices, higher prices of Animal & Vegetable Oils (21.3%), Miscellaneous Manufactured Articles (2.6%), Chemicals & Chemical Products (1.3%), Manufactured Goods (1.0%) and Crude Materials (0.4%) were partially offset by lower prices of Beverages & Tobacco (-4.7%) and Machinery & Transport Equipment (-0.4%).

### Annual Change

The Import Price Index fell 7.0% in 2020 over 2019, following the 1.0% decline in 2019. Lower prices of Oil (-29.8%), Beverages & Tobacco (-2.6%), Chemicals & Chemical Products (-1.2%) and Manufactured Goods (-0.2%) were partially offset by higher prices of Animal & Vegetable Oils (14.0%), Miscellaneous Manufactured Articles (3.8%), Food & Live Animals (1.3%) and Crude Materials (0.6%).

## Export Price Index (2018 = 100) December 2020

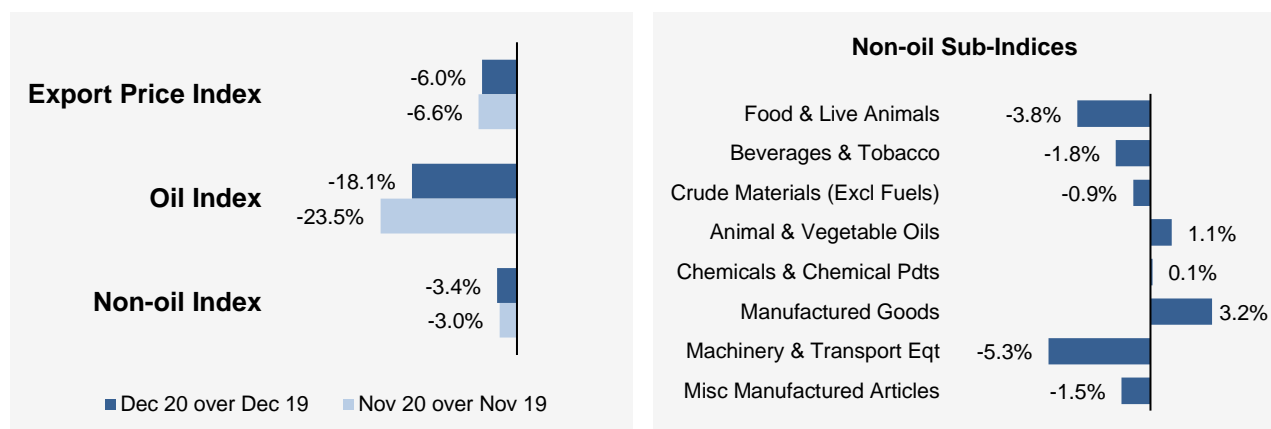
### Month-on-Month Change



The Export Price Index increased 0.8% in December 2020, against the 0.4% decline in November 2020. The Oil index rose 8.4%, following the 3.7% increase in the previous month. The Non-oil index fell 0.5%, continuing the 1.1% decline in November 2020.

Among the Non-oil sub-indices, the declines were led by the Machinery & Transport Equipment (-0.9%) and Miscellaneous Manufactured Articles (-0.9%) indices. The declines were partially moderated by increases in the Manufactured Goods (1.7%) index due mainly to higher prices of copper products, and the Chemicals & Chemical Products (0.6%) index.

### Year-on-Year Change



The Export Price Index fell 6.0% in December 2020 from a year ago, following the 6.6% decrease in November 2020. The Oil and Non-oil indices declined 18.1% and 3.4% respectively.

For the Non-oil sub-indices, lower prices of Machinery & Transport Equipment (-5.3%), Food & Live Animals (-3.8%), Beverages & Tobacco (-1.8%), Miscellaneous Manufactured Articles (-1.5%) and Crude Materials (-0.9%) were partially offset by higher prices of Manufactured Goods (3.2%), Animal & Vegetable Oils (1.1%) and Chemicals & Chemical Products (0.1%).

### Annual Change

The Export Price Index fell 7.0% in 2020 over 2019, after the 1.4% decline in 2019. Lower prices of Oil (-31.0%), Crude Materials (-10.7%), Chemicals & Chemical Products (-4.0%), Food & Live Animals (-3.0%), Machinery & Transport Equipment (-1.2%) and Manufactured Goods (-0.8%) were partially offset by higher prices of Animal & Vegetable Oils (4.7%), Miscellaneous Manufactured Articles (1.3%) and Beverages & Tobacco (0.8%).

## Technical Note

The **Import Price Index (IPI)** is used primarily as an indicator to track the price trends of imported goods into Singapore. Prices of imports, valued at cif (cost, insurance and freight) are obtained monthly from major importers. The weighting pattern of the index is derived from import statistics for 2018.

The **Export Price Index (EPI)** measures changes in the price of all exports of merchandise from Singapore, including re-exports. In general, prices are obtained from major exporters of the selected commodities. Prices used in the index computation, are the prices of goods that physically leave Singapore's main ports of export; also termed as free on board prices. The weights of the index are derived from the distribution of export by commodity in 2018.

### Index Formula

The 2018-based series is compiled using the Laspeyres formula where the price and weight reference periods are aligned to the year 2018. The geometric mean formula has been adopted in the computation of unweighted elementary aggregate price indices. The arithmetic mean formula is applied in compiling indices at higher levels of aggregation where weights of specific sub-indices are available.

### Measurement of Changes in Price Indices

*Change over previous month* compares the index of the month with that of the preceding month. Such comparisons measure the change in the price index between two consecutive months. They serve as useful short-term indicators of the price movements.

*Change over same period of previous year* measures change in the index over a twelve-month period. Such comparisons compare the movement in the price index between similar months in two consecutive years.

### Linking the Old 2012-Based Price Index Series to the New 2018-Based Price Index Series

The IPI and EPI have been rebased from base year 2012 to base year 2018. To facilitate comparison of the historical price indices across base years, the old 2012-based series are linked to the new 2018-based series by re-scaling them via a Linked Coefficient. The Linked Coefficient is the ratio of the annual 2018-based index in 2018 to the annual 2012-based index in 2018.

Example : Linking the old Iron & Steel Index series for IPI prior to 2018, to the 2018-based Iron & Steel Index (2018=100)

#### 1) Calculate the linked coefficient

Year	Iron & Steel Index (2012=100)	Iron & Steel Index (2018=100)	Linked Coefficient
2018	93.4	100.0	$100.0 \div 93.4 = 1.071$

#### 2) Re-scaling the old series to the 2018-based series using the Linked Coefficient

Year	Month	Iron & Steel Index (2012=100)	Iron & Steel Index (2018=100)
2016	Dec	84.0	$84.0 \times 1.071 = 90.0$
2017	Jan	85.6	$85.6 \times 1.071 = 91.7$

### Linking Method for Maintaining the Old Index Reference Period

To continue the old 2012-based index series going forward in time, re-scale the new 2018-based index series to the old base year 2012 level, via a Linked Coefficient. The Linked Coefficient is the ratio of the annual 2012-based index in 2018 to the annual 2018-based index in 2018.

Example : Linking the new 2018-based Iron & Steel Index series for IPI to the 2012-based Iron & Steel Index (2012=100)

1) Calculate the linked coefficient

Year	Iron & Steel Index (2018=100)	Iron & Steel Index (2012=100)	Linked Coefficient
2018	100.0	93.4	$93.4 \div 100.0 = 0.934$

2) Re-scaling the new series to the 2012-based series using the Linked Coefficient

Year	Month	Iron & Steel Index (2018=100)	Iron & Steel Index (2012=100)
2019	Jan	98.6	$98.6 \times 0.934 = 92.1$
2019	Feb	102.4	$102.4 \times 0.934 = 95.6$

### Index Revision

The indices may be revised when late returns and amendments received from respondents are incorporated.

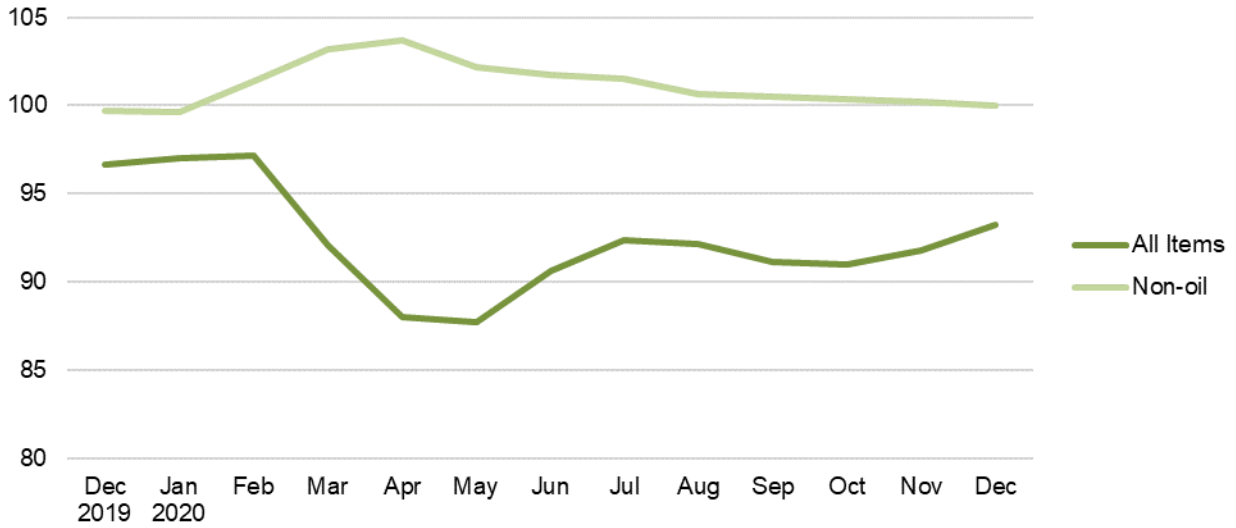
### Dissemination of Data

The Import and Export Price Indices are available on the SingStat Website ([www.singstat.gov.sg/tablebuilder](http://www.singstat.gov.sg/tablebuilder)). Excel tables for this month's report are available at <https://www.singstat.gov.sg/publications/economy/import-export-price-indices> or through the QR code below:

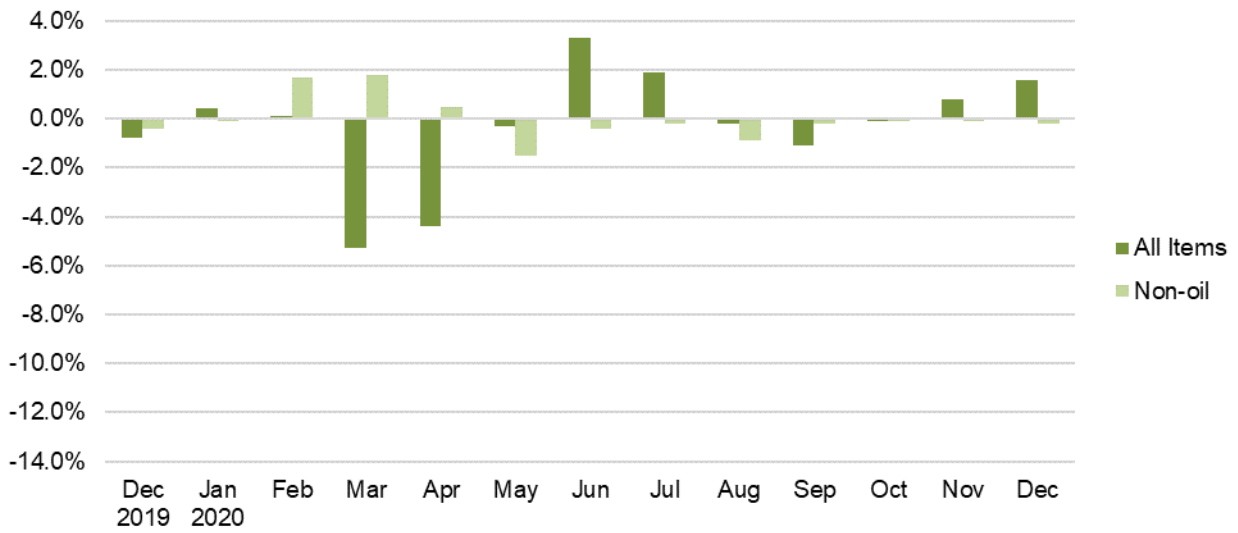


## Import Price Index (2018 = 100) December 2020

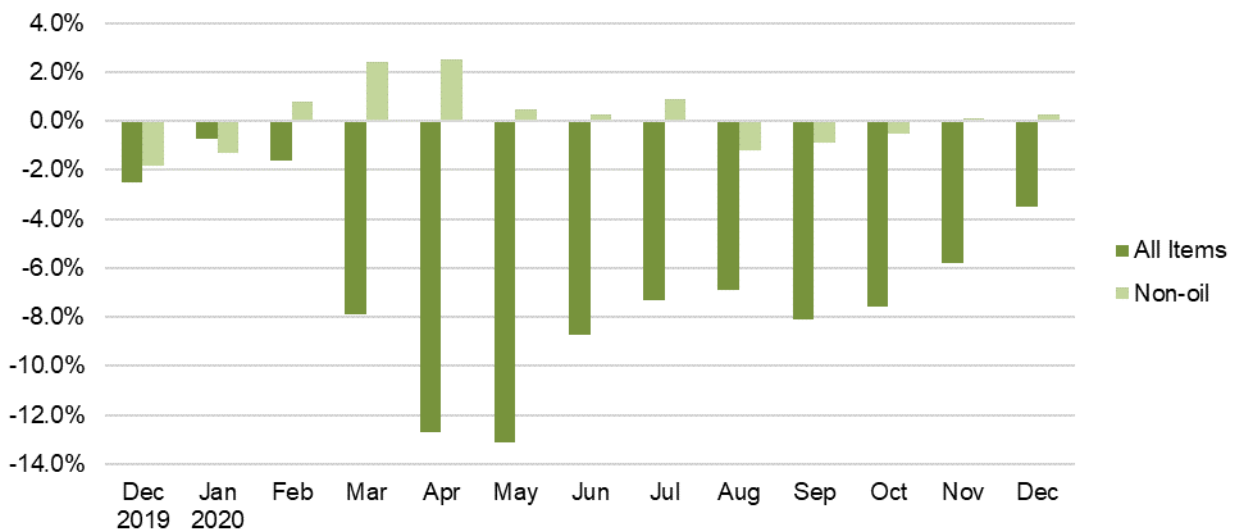
**Chart 1: Index**



**Chart 2: Month-on-Month Change**

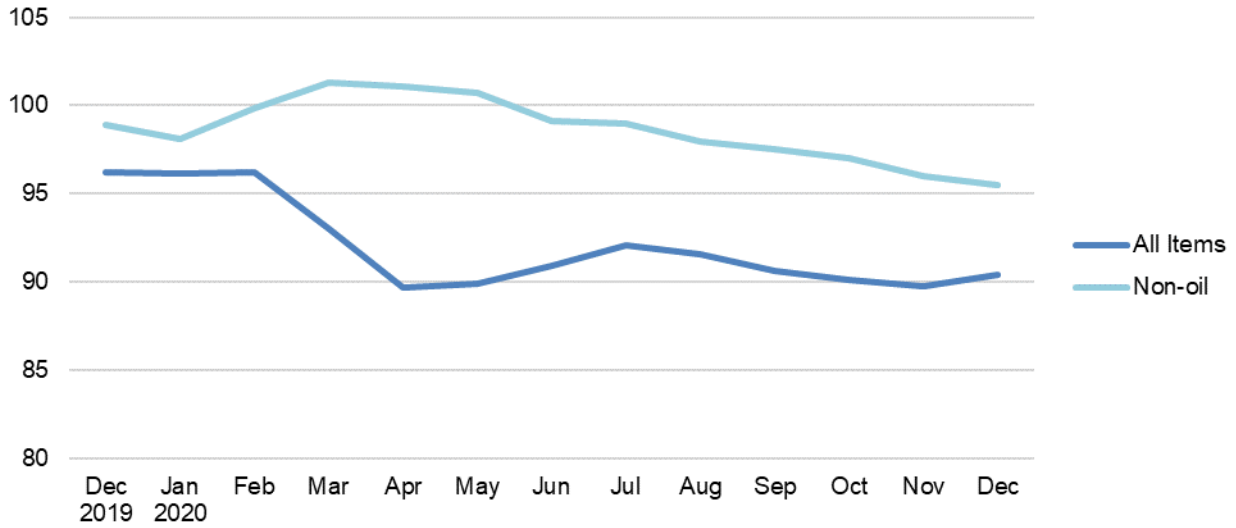


**Chart 3: Year-on-Year Change**

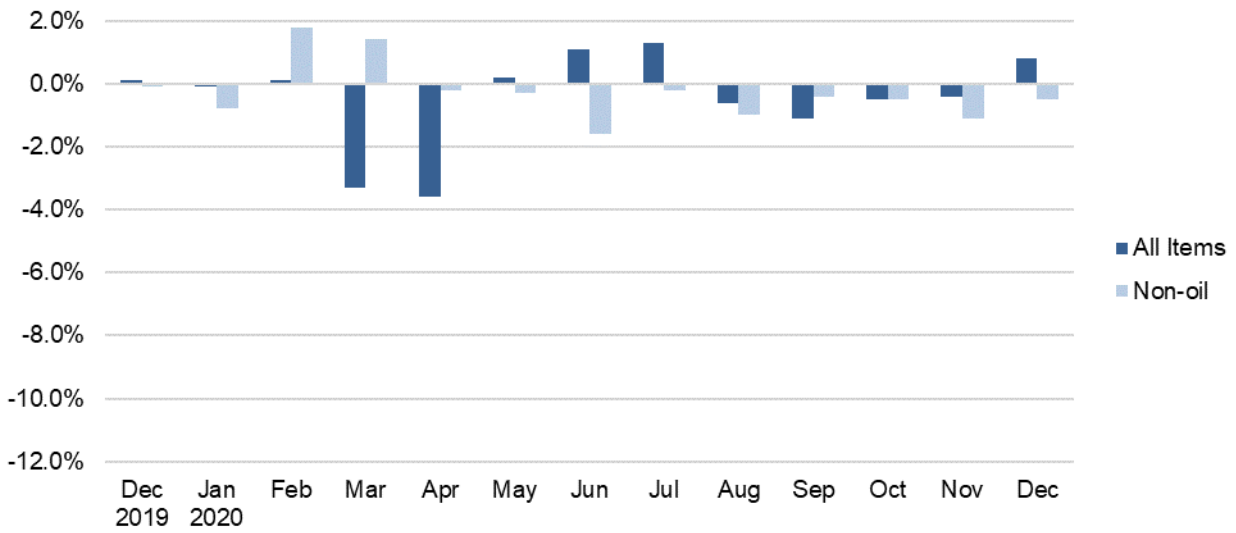


## Export Price Index (2018 = 100) December 2020

**Chart 4: Index**



**Chart 5: Month-on-Month Change**



**Chart 6: Year-on-Year Change**

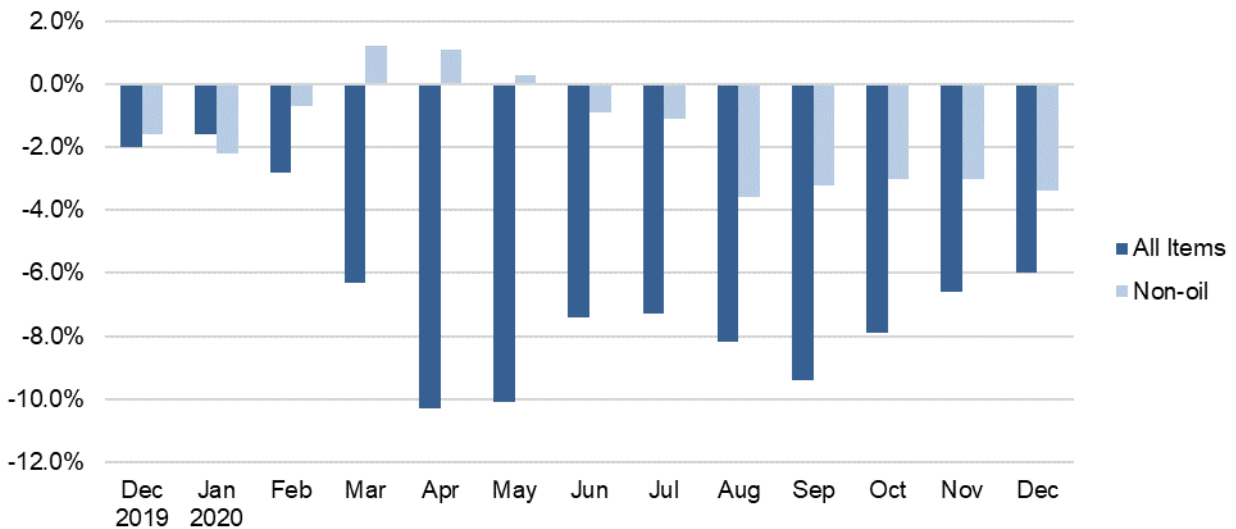




Table 1 Import Price Index

December 2020

Commodity section / division	Weights	Index (2018=100)			% Change		
		Oct 2020	Nov 2020	Dec 2020	Nov 2020	Dec 2020	Dec 2020
					Oct 2020	Nov 2020	Dec 2019
<b>All Items</b>	<b>10,000</b>	<b>91.0</b>	<b>91.8</b>	<b>93.3</b>	<b>0.8</b>	<b>1.6</b>	<b>-3.5</b>
<b>Non-oil Items</b>	<b>7,410</b>	<b>100.4</b>	<b>100.2</b>	<b>100.0</b>	<b>-0.1</b>	<b>-0.2</b>	<b>0.3</b>
Food & Live Animals	247	101.4	101.8	102.2	0.4	0.4	-
Live animals	9	100.0	100.5	99.7	0.5	-0.8	2.2
Meat & meat preparations	31	105.1	106.3	106.1	1.2	-0.2	-0.6
Dairy products & birds' eggs	30	105.7	105.6	106.6	-0.1	0.9	2.7
Fish seafood & preparations	34	93.1	93.1	94.1	-0.1	1.1	-4.1
Cereals & cereal preparations	24	100.1	99.3	98.4	-0.9	-0.9	-1.8
Vegetables & fruit	48	107.4	106.2	108.1	-1.1	1.7	3.0
Sugar, sugar preparations & honey	9	101.5	100.9	101.8	-0.5	0.9	5.7
Coffee, tea, cocoa, spices & manufactures	28	90.8	95.9	94.7	5.6	-1.3	-2.2
Animal feeding stuff (excl unmilled cereals)	4	99.7	99.3	99.7	-0.4	0.4	3.1
Miscellaneous food preparations	31	104.8	104.8	104.8	-0.1	-	-1.6
Beverages & Tobacco	112	95.1	95.0	94.8	-0.1	-0.1	-4.7
Beverages	84	93.8	93.7	93.6	-0.1	-0.1	-5.2
Tobacco & manufactures	28	99.0	98.9	98.7	-0.1	-0.2	-3.2
Crude Materials (excl fuels)	84	101.8	101.5	101.5	-0.3	-	0.4
Oil seeds & oleaginous fruits	2	113.0	112.6	112.2	-0.4	-0.3	2.7
Crude rubber	19	108.0	107.0	105.6	-0.9	-1.4	-2.3
Cork & w ood	3	93.1	93.1	92.2	-	-1.0	-2.7
Crude fertilizers & minerals	30	101.4	101.3	101.1	-0.1	-0.1	-0.7
Metalliferous ores & metal scrap	17	101.3	101.1	102.9	-0.2	1.7	14.2
Crude animal & vegetable materials nes	13	95.3	95.4	95.7	0.1	0.3	-8.7
Mineral Fuels, Lubricants & Related Materials	2,590	64.1	67.5	74.0	5.3	9.6	-15.7
Petroleum & products & related materials	2,431	64.7	68.1	74.8	5.4	9.9	-15.8
Gas	159	56.3	58.3	60.8	3.5	4.2	-13.4
Animal & Vegetable Oils, Fats & Waxes	27	108.4	113.3	120.0	4.6	5.9	21.3
Fixed vegetable fats & oils	27	108.4	113.3	120.0	4.6	5.9	21.3
Chemicals & Chemical Products	888	97.3	97.4	97.6	0.1	0.2	1.3
Organic chemicals	216	89.5	89.9	91.2	0.5	1.4	-2.3
Inorganic chemicals	35	106.3	105.6	107.1	-0.7	1.4	17.3
Dyeing, tanning & colouring materials	33	104.3	103.8	103.7	-0.5	-0.2	-1.0
Medicinal & pharmaceutical products	101	103.7	103.3	102.9	-0.3	-0.5	0.1
Essential oils & perfume; toilet cleaning products	147	106.5	106.4	106.3	-0.1	-0.1	7.3
Plastics in primary forms	164	87.8	89.3	90.1	1.7	0.8	0.9
Plastics in non-primary forms	38	103.6	102.9	102.2	-0.7	-0.7	0.7
Chemical materials & products nes	154	100.2	99.3	98.5	-0.8	-0.9	-1.0
Manufactured Goods	505	99.4	100.2	100.5	0.8	0.2	1.0
Rubber manufactures nes	25	101.6	102.1	99.7	0.6	-2.4	-3.2
Paper manufactures	51	89.5	89.1	88.5	-0.5	-0.7	-7.0
Textile manufactures	26	99.9	99.7	99.2	-0.2	-0.5	-2.3
Non-metal mineral manufactures nes	60	102.4	102.9	102.6	0.5	-0.3	-2.2
Iron & steel	131	95.6	96.5	97.5	1.0	1.0	-0.3
Non-ferrous metals	84	108.4	112.0	114.1	3.3	1.8	14.1
Manufactures of metals nes	128	99.5	99.2	98.8	-0.3	-0.5	-0.3
Machinery & Transport Equipment	4,690	100.1	99.8	99.4	-0.3	-0.4	-0.4
Pow er-generating machinery & equipment	526	110.7	113.2	112.4	2.3	-0.7	7.1
Machinery specialized for particular industries	306	100.7	99.8	98.7	-0.9	-1.1	-1.9
Metal working machinery	23	102.6	102.3	101.9	-0.3	-0.4	5.1
General industrial machinery	281	102.3	102.2	101.6	-0.1	-0.6	1.0
Office machines & data-processing machines	457	98.5	95.9	95.9	-2.6	-0.1	-2.4
Telecommunication apparatus	390	86.7	86.5	86.2	-0.2	-0.4	-3.8
Electrical machinery apparatus nes, electrical parts	2,542	99.9	99.4	99.2	-0.5	-0.2	-1.0
Road vehicles	164	99.4	99.3	98.5	-0.1	-0.8	-2.5
Miscellaneous Manufactured Articles	857	105.8	105.4	104.8	-0.4	-0.5	2.6
Prefab building, sanitary plumbing, lighting nes	12	105.7	105.7	105.7	-	-	5.0
Furniture, bedding, mattresses, cushions & others	26	106.5	106.6	106.4	-	-0.1	1.8
Travel goods, handbags & similar containers	54	102.9	102.8	102.4	-0.1	-0.4	-1.9
Articles of apparel & clothing accessories	79	101.4	101.7	101.4	0.3	-0.3	1.3
Footw ear	24	103.5	103.7	103.7	0.2	-	4.1
Professional scientific & controlling instruments	275	103.6	102.9	102.1	-0.6	-0.8	-1.0
Photographic & optical goods nes; w atches & clocks	106	104.9	104.7	104.6	-0.2	-0.1	4.5
Miscellaneous manufactured articles nes	283	110.2	109.5	108.9	-0.7	-0.5	6.5

Figures may not sum to total due to rounding.

Table 2 Export Price Index

December 2020

Commodity section / division	Weights	Index (2018=100)			% Change		
		Oct 2020	Nov 2020	Dec 2020	Nov 2020	Dec 2020	Dec 2020
					Oct 2020	Nov 2020	Dec 2019
<b>All Items</b>	<b>10,000</b>	<b>90.1</b>	<b>89.7</b>	<b>90.4</b>	<b>-0.4</b>	<b>0.8</b>	<b>-6.0</b>
<b>Non-oil Items</b>	<b>8,022</b>	<b>97.0</b>	<b>96.0</b>	<b>95.5</b>	<b>-1.1</b>	<b>-0.5</b>	<b>-3.4</b>
Food & Live Animals	236	93.3	94.0	92.1	0.8	-2.1	-3.8
Dairy products & birds' eggs	5	73.5	59.5	52.3	-19.1	-12.1	-48.4
Fish seafood & preparations	9	85.9	84.5	83.9	-1.7	-0.7	-11.1
Cereals & cereal preparations	7	96.3	96.4	96.0	0.1	-0.4	-1.5
Vegetables & fruit	8	89.4	88.7	90.6	-0.8	2.2	3.4
Sugar, sugar preparations & honey	3	103.0	104.4	103.7	1.4	-0.6	5.3
Coffee, tea, cocoa, spices & manufactures	26	103.1	103.3	103.2	0.3	-0.2	0.1
Animal feeding stuff (excl unmilled cereals)	7	111.7	110.8	111.0	-0.8	0.2	2.1
Miscellaneous food preparations	171	91.8	93.4	90.9	1.7	-2.7	-3.6
Beverages & Tobacco	103	100.5	100.8	101.0	0.3	0.2	-1.8
Beverages	75	99.6	100.3	101.1	0.8	0.8	-1.7
Tobacco & manufactures	28	102.8	101.9	100.7	-0.9	-1.1	-2.1
Crude Materials (excl fuels)	91	79.2	79.3	80.9	0.1	2.0	-0.9
Crude rubber	35	72.6	71.5	70.8	-1.6	-0.9	-21.8
Pulp and waste paper	26	75.4	77.6	78.5	2.9	1.1	19.2
Metalliferous ores & metal scrap	26	88.6	89.2	94.8	0.7	6.2	14.4
Crude animal & vegetable materials nes	4	101.4	95.0	95.3	-6.3	0.3	-2.6
Mineral Fuels, Lubricants & Related Materials	1,978	62.1	64.5	69.9	3.7	8.4	-18.1
Petroleum & products & related materials	1,978	62.1	64.5	69.9	3.7	8.4	-18.1
Animal & Vegetable Oils, Fats & Waxes	5	97.5	97.6	99.0	0.1	1.5	1.1
Fixed vegetable fats & oils	5	97.5	97.6	99.0	0.1	1.5	1.1
Chemicals & Chemical Products	1,525	90.6	91.4	92.0	0.9	0.6	0.1
Organic chemicals	428	81.5	83.8	85.3	2.7	1.9	-3.1
Inorganic chemicals	14	110.8	112.4	115.9	1.4	3.1	12.1
Dyeing, tanning & colouring materials	37	94.9	93.8	93.7	-1.2	-0.1	-5.8
Medicinal & pharmaceutical products	250	97.6	97.5	97.2	-0.1	-0.3	1.7
Essential oils & perfume; toilet cleaning products	232	99.1	98.9	98.7	-0.2	-0.2	-0.8
Plastics in primary forms	355	84.5	85.9	87.0	1.7	1.3	2.8
Plastics in non-primary forms	29	107.5	106.8	106.9	-0.6	0.1	6.7
Chemical materials & products nes	181	98.3	97.6	97.1	-0.6	-0.6	0.9
Manufactured Goods	318	98.3	99.1	100.7	0.8	1.7	3.2
Rubber manufactures nes	22	99.4	98.9	98.4	-0.5	-0.5	1.0
Paper manufactures	41	96.6	96.1	95.4	-0.5	-0.7	-3.8
Textile manufactures	19	101.6	101.4	101.0	-0.1	-0.4	1.4
Non-metal mineral manufactures nes	14	99.1	98.4	97.5	-0.6	-0.9	-0.8
Iron & steel	66	94.9	95.7	97.5	0.8	1.9	-3.2
Non-ferrous metals	67	99.7	103.3	109.6	3.6	6.2	18.7
Manufactures of metals nes	89	99.3	99.4	99.8	0.1	0.4	2.1
Machinery & Transport Equipment	4,836	98.5	96.7	95.8	-1.9	-0.9	-5.3
Power-generating machinery & equipment	418	100.3	99.6	98.3	-0.7	-1.3	-1.5
Machinery specialized for particular industries	437	97.4	98.0	97.3	0.6	-0.6	-5.3
Metal working machinery	25	99.5	97.3	96.5	-2.3	-0.8	-5.5
General industrial machinery	212	101.9	101.7	101.0	-0.2	-0.7	-0.2
Office machines & data-processing machines	467	100.1	100.5	99.6	0.4	-0.9	-2.4
Telecommunication apparatus	366	86.6	86.4	87.5	-0.2	1.3	-4.4
Electrical machinery apparatus nes, electrical parts	2,814	99.3	96.1	95.0	-3.2	-1.2	-7.0
Road vehicles	98	105.0	104.2	103.9	-0.8	-0.3	1.8
Miscellaneous Manufactured Articles	908	101.7	100.6	99.7	-1.0	-0.9	-1.5
Prefab building, sanitary plumbing, lighting nes	3	107.1	106.8	108.3	-0.2	1.3	9.5
Furniture, bedding, mattresses, cushions & others	5	101.8	101.3	100.5	-0.5	-0.7	-0.3
Travel goods, handbags & similar containers	37	94.6	94.6	95.1	0.1	0.5	-6.1
Articles of apparel & clothing accessories	40	111.7	113.8	111.1	1.9	-2.3	-2.8
Footwear	14	93.8	93.0	91.9	-0.9	-1.1	-6.6
Professional scientific & controlling instruments	365	91.3	90.4	89.4	-1.0	-1.1	-6.4
Photographic & optical goods nes; watches & clocks	98	102.9	102.7	103.1	-0.2	0.4	1.8
Miscellaneous manufactured articles nes	345	112.2	110.3	109.1	-1.6	-1.1	2.9

Figures may not sum to total due to rounding.

**Table 3 Import Price Index**

Section	All Items	Non-oil Items	Food & Live Animals	Beverages & Tobacco	Crude Materials	Mineral Fuels	Animal & Vegetable Oils, Fats & Waxes	Chemicals & Chemical Products	Manufactured Goods	Machinery & Transport Equipment	Misc. Manufactured Articles
Weights	<b>10,000</b>	<b>7,410</b>	247	112	84	2,590	27	888	505	4,690	857
<b>Index (2018=100)</b>											
2017	<b>95.3</b>	<b>101.0</b>	101.2	100.2	100.5	79.7	114.7	96.7	96.4	102.2	101.6
2018	<b>100.0</b>	<b>100.0</b>	100.0	100.0	100.0	100.0	100.0	100.0	100.0	100.0	100.0
2019	<b>99.0</b>	<b>100.9</b>	101.5	100.4	101.2	93.4	90.4	98.6	99.9	101.3	102.0
2020	<b>92.0</b>	<b>101.2</b>	102.9	97.7	101.8	65.6	103.1	97.5	99.7	101.2	106.0
2019											
Dec	<b>96.6</b>	<b>99.7</b>	102.2	99.5	101.1	87.8	98.9	96.4	99.5	99.7	102.2
2020											
Jan	<b>97.0</b>	<b>99.6</b>	103.0	101.3	101.7	89.5	102.9	96.2	98.1	99.7	102.3
Feb	<b>97.2</b>	<b>101.4</b>	103.1	102.3	102.7	85.1	101.6	98.1	99.9	101.4	104.3
Mar	<b>92.0</b>	<b>103.2</b>	103.2	104.0	103.6	60.3	99.0	98.9	100.5	103.6	106.8
Apr	<b>88.0</b>	<b>103.7</b>	104.5	104.1	102.0	43.1	96.7	97.6	100.4	104.4	108.0
May	<b>87.7</b>	<b>102.1</b>	104.4	97.0	101.8	46.5	94.2	96.6	100.2	102.4	107.8
Jun	<b>90.6</b>	<b>101.7</b>	102.9	97.0	101.4	58.8	96.6	96.6	99.6	102.1	106.7
Jul	<b>92.3</b>	<b>101.5</b>	103.3	93.9	101.9	66.0	98.1	98.1	99.7	101.6	106.7
Aug	<b>92.2</b>	<b>100.6</b>	102.8	93.8	100.5	67.9	101.9	97.8	99.2	100.3	106.5
Sep	<b>91.1</b>	<b>100.5</b>	102.3	94.7	101.2	64.3	104.1	97.3	99.2	100.2	106.3
Oct	<b>91.0</b>	<b>100.4</b>	101.4	95.1	101.8	64.1	108.4	97.3	99.4	100.1	105.8
Nov	<b>91.8</b>	<b>100.2</b>	101.8	95.0	101.5	67.5	113.3	97.4	100.2	99.8	105.4
Dec	<b>93.3</b>	<b>100.0</b>	102.2	94.8	101.5	74.0	120.0	97.6	100.5	99.4	104.8
<b>Percentage Change over same period of previous year (%)</b>											
2018	<b>4.9</b>	<b>-1.0</b>	-1.2	-0.2	-0.5	25.5	-12.8	3.4	3.7	-2.1	-1.6
2019	<b>-1.0</b>	<b>0.9</b>	1.5	0.4	1.2	-6.6	-9.6	-1.4	-0.1	1.3	2.0
2020	<b>-7.0</b>	<b>0.3</b>	1.3	-2.6	0.6	-29.8	14.0	-1.2	-0.2	-	3.8
2019											
Dec	<b>-2.5</b>	<b>-1.8</b>	1.2	-1.4	0.7	-4.5	9.6	-3.8	-0.6	-2.5	1.8
2020											
Jan	<b>-0.7</b>	<b>-1.3</b>	1.7	0.5	2.0	1.3	12.7	-2.9	-1.3	-1.9	1.4
Feb	<b>-1.6</b>	<b>0.8</b>	2.9	1.7	2.6	-9.2	12.0	-0.6	-0.5	0.5	3.5
Mar	<b>-7.9</b>	<b>2.4</b>	3.0	3.3	3.3	-38.4	10.4	-0.2	-0.1	2.4	6.2
Apr	<b>-12.7</b>	<b>2.5</b>	4.3	3.4	0.4	-56.8	7.2	-2.0	0.4	2.7	7.3
May	<b>-13.1</b>	<b>0.5</b>	3.4	-3.9	-1.1	-53.1	5.7	-2.9	-0.2	0.1	6.2
Jun	<b>-8.7</b>	<b>0.3</b>	1.1	-3.9	-0.6	-36.6	10.3	-2.6	-	0.1	4.7
Jul	<b>-7.3</b>	<b>0.9</b>	1.0	-6.0	0.5	-31.9	13.8	-0.3	0.5	0.7	4.4
Aug	<b>-6.9</b>	<b>-1.2</b>	0.2	-6.9	-1.9	-25.1	15.1	-1.1	-0.8	-1.9	2.3
Sep	<b>-8.1</b>	<b>-0.9</b>	-0.4	-5.7	-	-30.6	16.8	-1.6	-1.3	-1.3	2.4
Oct	<b>-7.6</b>	<b>-0.5</b>	-1.0	-5.0	1.0	-29.8	21.2	-0.9	-0.6	-1.0	2.4
Nov	<b>-5.8</b>	<b>0.1</b>	0.2	-4.7	0.8	-24.6	21.0	0.1	0.7	-0.4	2.9
Dec	<b>-3.5</b>	<b>0.3</b>	-	-4.7	0.4	-15.7	21.3	1.3	1.0	-0.4	2.6

**Table 4 Export Price Index**

Section	All Items	Non-oil Items	Food & Live Animals	Beverages & Tobacco	Crude Materials	Mineral Fuels	Animal & Vegetable Oils, Fats & Waxes	Chemicals & Chemical Products	Manufactured Goods	Machinery & Transport Equipment	Misc. Manufactured Articles
Weights	<b>10,000</b>	<b>8,022</b>	236	103	91	1,978	5	1,525	318	4,836	908
<b>Index (2018=100)</b>											
2017	<b>96.9</b>	<b>100.9</b>	100.0	101.7	101.1	81.4	102.8	97.7	98.2	102.0	101.5
2018	<b>100.0</b>	<b>100.0</b>	100.0	100.0	100.0	100.0	100.0	100.0	100.0	100.0	100.0
2019	<b>98.6</b>	<b>100.1</b>	97.6	102.6	90.6	92.4	97.1	94.8	98.7	101.8	101.9
2020	<b>91.7</b>	<b>98.6</b>	94.7	103.4	80.9	63.7	101.7	91.1	97.9	100.6	103.2
2019											
Dec	<b>96.2</b>	<b>98.9</b>	95.7	102.9	81.6	85.3	97.9	91.8	97.5	101.1	101.3
2020											
Jan	<b>96.1</b>	<b>98.1</b>	94.9	103.5	82.6	88.0	99.7	91.0	97.0	100.3	100.7
Feb	<b>96.2</b>	<b>99.9</b>	97.5	105.5	82.2	81.3	105.4	93.0	97.5	102.0	102.7
Mar	<b>93.0</b>	<b>101.3</b>	96.1	106.3	82.4	59.4	110.8	93.4	97.3	103.7	105.6
Apr	<b>89.7</b>	<b>101.1</b>	93.0	107.4	82.0	43.5	106.5	92.2	96.7	103.9	105.6
May	<b>89.9</b>	<b>100.7</b>	94.6	106.7	83.5	45.9	105.3	90.6	96.9	103.8	105.4
Jun	<b>90.9</b>	<b>99.1</b>	93.9	103.8	82.9	57.7	102.5	89.9	97.1	101.6	104.1
Jul	<b>92.1</b>	<b>98.9</b>	95.1	102.2	79.2	64.4	99.1	89.6	98.1	101.5	104.1
Aug	<b>91.6</b>	<b>97.9</b>	94.6	102.0	77.7	65.8	98.4	89.5	98.2	99.8	104.2
Sep	<b>90.6</b>	<b>97.5</b>	97.0	101.2	79.2	62.6	98.4	89.6	98.3	99.1	103.7
Oct	<b>90.1</b>	<b>97.0</b>	93.3	100.5	79.2	62.1	97.5	90.6	98.3	98.5	101.7
Nov	<b>89.7</b>	<b>96.0</b>	94.0	100.8	79.3	64.5	97.6	91.4	99.1	96.7	100.6
Dec	<b>90.4</b>	<b>95.5</b>	92.1	101.0	80.9	69.9	99.0	92.0	100.7	95.8	99.7
<b>Percentage Change over same period of previous year (%)</b>											
2018	<b>3.2</b>	<b>-0.9</b>	-	-1.7	-1.1	22.9	-2.7	2.3	1.9	-1.9	-1.5
2019	<b>-1.4</b>	<b>0.1</b>	-2.4	2.6	-9.4	-7.6	-2.9	-5.2	-1.3	1.8	1.9
2020	<b>-7.0</b>	<b>-1.5</b>	-3.0	0.8	-10.7	-31.0	4.7	-4.0	-0.8	-1.2	1.3
2019											
Dec	<b>-2.0</b>	<b>-1.6</b>	-4.5	1.0	-20.9	-3.8	-0.7	-7.4	-1.5	0.6	-0.9
2020											
Jan	<b>-1.6</b>	<b>-2.2</b>	-4.9	1.0	-15.4	1.2	0.6	-5.9	-1.4	-1.1	-1.1
Feb	<b>-2.8</b>	<b>-0.7</b>	-1.7	2.9	-14.8	-11.8	9.1	-3.3	-1.8	-	1.0
Mar	<b>-6.3</b>	<b>1.2</b>	-1.8	4.2	-13.8	-38.0	14.0	-3.0	-2.1	2.5	4.1
Apr	<b>-10.3</b>	<b>1.1</b>	-3.3	5.0	-13.7	-56.6	10.2	-4.0	-2.5	2.5	4.9
May	<b>-10.1</b>	<b>0.3</b>	-2.8	4.1	-11.6	-53.3	8.7	-6.4	-1.9	2.1	3.7
Jun	<b>-7.4</b>	<b>-0.9</b>	-3.9	1.4	-9.4	-36.3	7.9	-5.3	-1.0	-0.1	2.8
Jul	<b>-7.3</b>	<b>-1.1</b>	-3.0	-	-12.4	-33.3	0.4	-5.0	-0.1	-0.4	2.8
Aug	<b>-8.2</b>	<b>-3.6</b>	-3.3	-0.6	-12.8	-28.9	-2.0	-5.5	-1.2	-3.9	0.6
Sep	<b>-9.4</b>	<b>-3.2</b>	-0.9	-1.9	-9.3	-35.5	0.8	-4.8	-1.3	-3.5	0.2
Oct	<b>-7.9</b>	<b>-3.0</b>	-4.1	-2.8	-7.3	-30.5	3.4	-2.9	-0.3	-3.4	-1.0
Nov	<b>-6.6</b>	<b>-3.0</b>	-3.1	-1.6	-3.6	-23.5	2.8	-1.5	1.2	-4.1	-0.9
Dec	<b>-6.0</b>	<b>-3.4</b>	-3.8	-1.8	-0.9	-18.1	1.1	0.1	3.2	-5.3	-1.5

**NOTATIONS**

- nes not elsewhere specified
- nil or negligible

**NOTES**

The Import and Export Price Indices report contains statistics that are the most recent available at the time of its preparation.

Some statistics, particularly those for the most recent time periods, are provisional and may be subject to revision in later issues.