



Import & Export Price Indices January 2019

IMPORT AND EXPORT PRICE INDICES, January 2019
ISSN 2591-7463

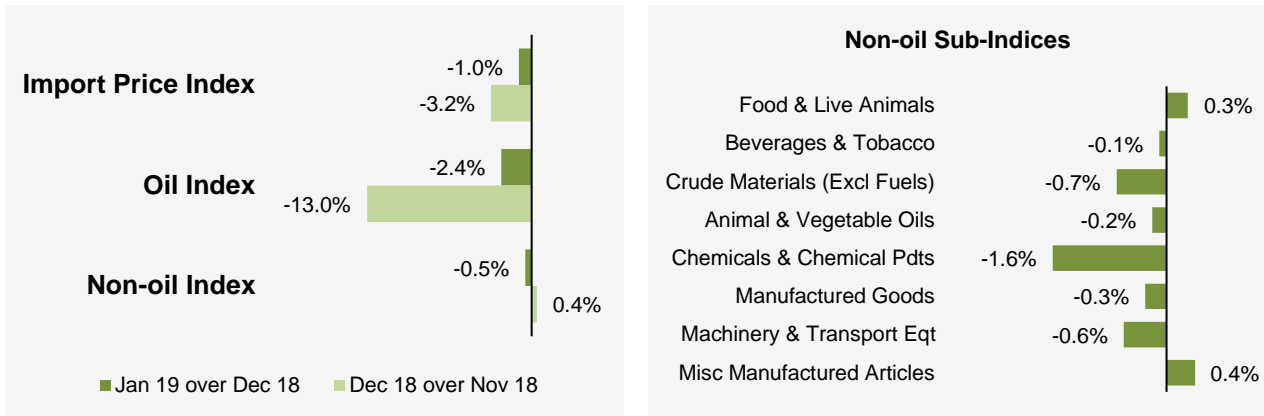
© Department of Statistics, Ministry of Trade & Industry, Republic of Singapore

Reproducing or quoting any part of this publication is permitted, provided this publication is accredited as the source. Please refer to the Statistics Singapore Website Terms of Use (<http://www.singstat.gov.sg/terms-of-use>) for more details on the conditions of use of this publication.

Statistical activities conducted by the Singapore Department of Statistics are governed by the provisions of the Statistics Act (Cap. 317). The Act guarantees the confidentiality of information collected from individuals and companies. It spells out the legislative authority and responsibility of the Chief Statistician. The Act is available in the Department's Website (www.singstat.gov.sg).

Import Price Index (2018 = 100) January 2019

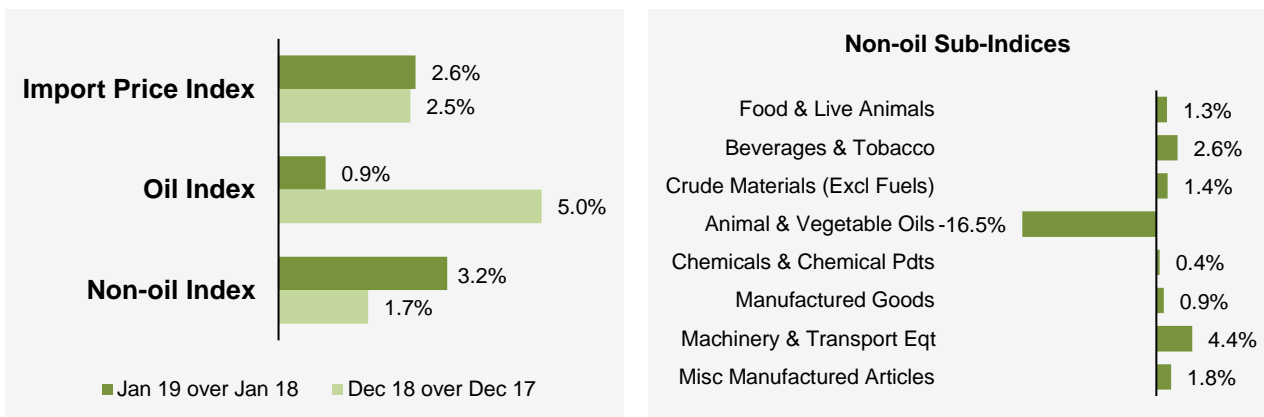
Month-on-Month Change



The Import Price Index fell 1.0% in January 2019, extending the 3.2% decrease in December 2018. The Oil index decreased 2.4%, following the 13.0% decline in the previous month. The Non-oil index fell 0.5% in January 2019, in contrast to the 0.4% increase in December 2018.

Among the Non-oil sub-indices, decreases were led by the Chemicals & Chemical Products (-1.6%) index, due mainly to lower prices of oil additives, and the Machinery & Transport Equipment (-0.6%) index. The declines were partially offset by increases in the Miscellaneous Manufactured Articles (0.4%) and Food & Live Animals (0.3%) indices.

Year-on-Year Change

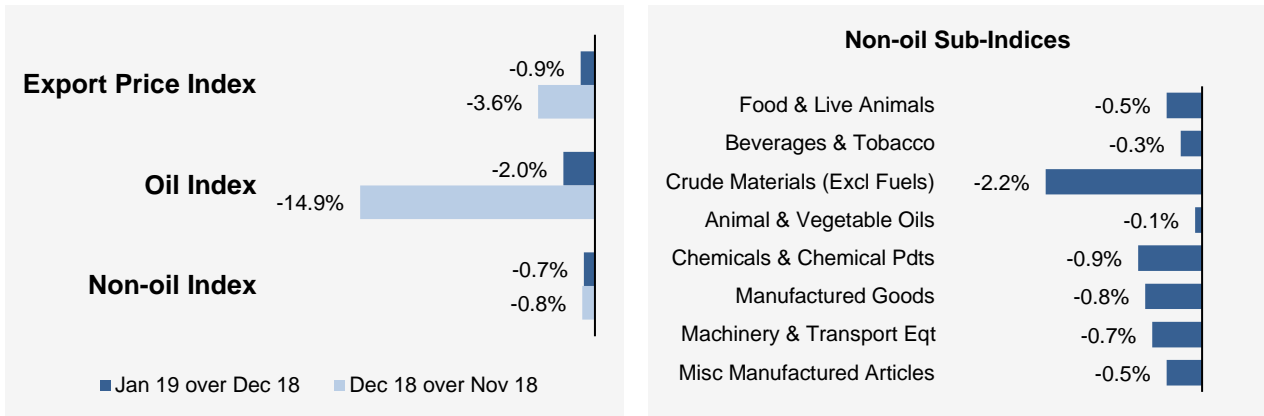


The Import Price Index rose 2.6% in January 2019 from a year ago, following the 2.5% increase in December 2018. The Oil and Non-oil indices increased 0.9% and 3.2% respectively.

All Non-oil sub-indices increased except for the Animal & Vegetable Oils (-16.5%) index. Higher prices were registered for Machinery & Transport Equipment (4.4%), Beverages & Tobacco (2.6%), Miscellaneous Manufactured Articles (1.8%), Crude Materials (1.4%), Food & Live Animals (1.3%), Manufactured Goods (0.9%) and Chemicals & Chemical Products (0.4%).

Export Price Index (2018 = 100) January 2019

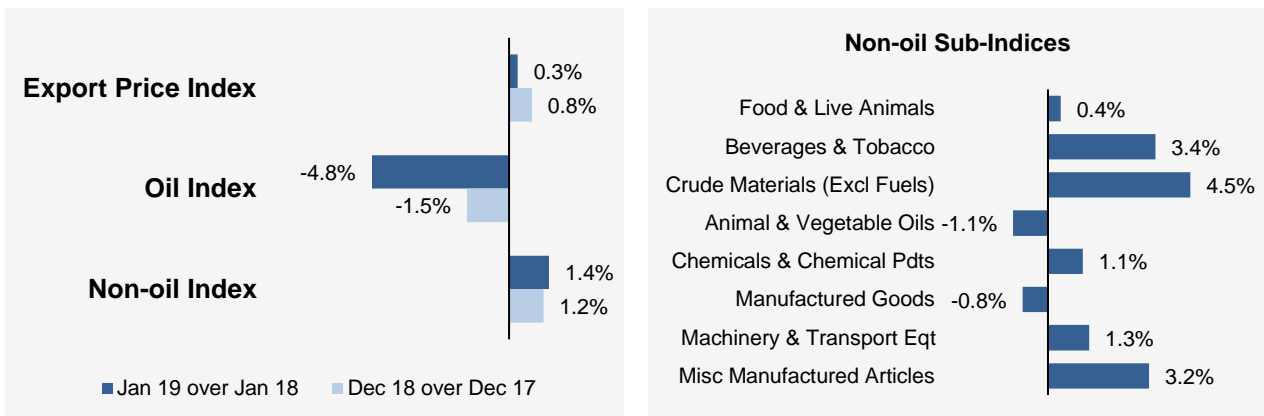
Month-on-Month Change



The Export Price Index declined 0.9% in January 2019, continuing the 3.6% decrease in December 2018. The Oil index slipped 2.0%, extending the 14.9% decrease in the previous month. The Non-oil index decreased 0.7% in January 2019, after falling 0.8% in the previous month.

All Non-oil sub-indices were lower. The decreases were led by the Chemicals & Chemical Products (-0.9%), Machinery & Transport Equipment (-0.7%) and Miscellaneous Manufactured Articles (-0.5%) indices.

Year-on-Year Change



The Export Price Index rose 0.3% in January 2019 over the previous year, after the 0.8% increase in December 2018. The Oil index fell 4.8% while the Non-oil index rose 1.4%.

For the Non-oil sub-indices, increases in the Crude Materials (4.5%), Beverages & Tobacco (3.4%), Miscellaneous Manufactured Articles (3.2%), Machinery & Transport Equipment (1.3%), Chemicals & Chemical Products (1.1%) and Food & Live Animals (0.4%) indices were partially moderated by decreases in the Animal & Vegetable Oils (-1.1%) and Manufactured Goods (-0.8%) indices.

Technical Note

The **Import Price Index (IPI)** is used primarily as an indicator to track the price trends of imported goods into Singapore. Prices of imports, valued at cif (cost, insurance and freight) are obtained monthly from major importers. The weighting pattern of the index is derived from import statistics for 2018.

The **Export Price Index (EPI)** measures changes in the price of all exports of merchandise from Singapore, including re-exports. In general, prices are obtained from major exporters of the selected commodities. Prices used in the index computation, are the prices of goods that physically leave Singapore's main ports of export; also termed as free on board prices. The weights of the index are derived from the distribution of export by commodity in 2018.

2018 Rebasing of the IPI and EPI

The Singapore Department of Statistics (DOS) has completed the rebasing of the Import and Export Price Indices from base year 2012 to 2018. The rebasing exercise is conducted periodically to ensure that the 'basket' of commodities remain relevant to changing imports and exports patterns.

Commodity Section	Import Price Index		Export Price Index	
	2012-based	2018-based	2012-based	2018-based
All items	10,000	10,000	10,000	10,000
Oil	3,316	2,590	2,605	1,978
Non-oil	6,684	7,410	7,395	8,022
Food & Live Animals	215	247	124	236
Beverages & Tobacco	86	112	87	103
Crude Materials (Excl Fuels)	83	84	60	91
Animal & Vegetable Oils Fats & Waxes	37	27	8	5
Chemicals & Chemical Products	694	888	1,344	1,525
Manufactured Goods	635	505	381	318
Machinery & Transport Equipment	4,205	4,690	4,595	4,836
Miscellaneous Manufactured Articles	729	857	796	908

An Information Paper on the Rebasing of Import and Export Price Indices (2018=100) is available on the department's website at <https://www.singstat.gov.sg/ppi#Producer-and-International-Trade-Prices>.

Index Formula

The 2018-based series is compiled using the Laspeyres formula where the price and weight reference periods are aligned to the year 2018. The geometric mean formula has been adopted in the computation of unweighted elementary aggregate price indices. The arithmetic mean formula is applied in compiling indices at higher levels of aggregation where weights of specific sub-indices are available.

Measurement of Changes in Price Indices

Change over previous month compares the index of the month with that of the preceding month. Such comparisons measure the change in the price index between two consecutive months. They serve as useful short-term indicators of the price movements.

Change over same period of previous year measures change in the index over a twelve-month period. Such comparisons compare the movement in the price index between similar months in two consecutive years.

Index Revision

The indices may be revised when late returns and amendments received from respondents are incorporated.

Dissemination of Data

The Import and Export Price Indices are available on the SingStat Website (www.singstat.gov.sg/tablebuilder). Excel tables for this month's report are available at <https://www.singstat.gov.sg/publications/economy/import-export-price-indices> or through the QR code below:



Import Price Index (2018 = 100) January 2019

Chart 1: Index

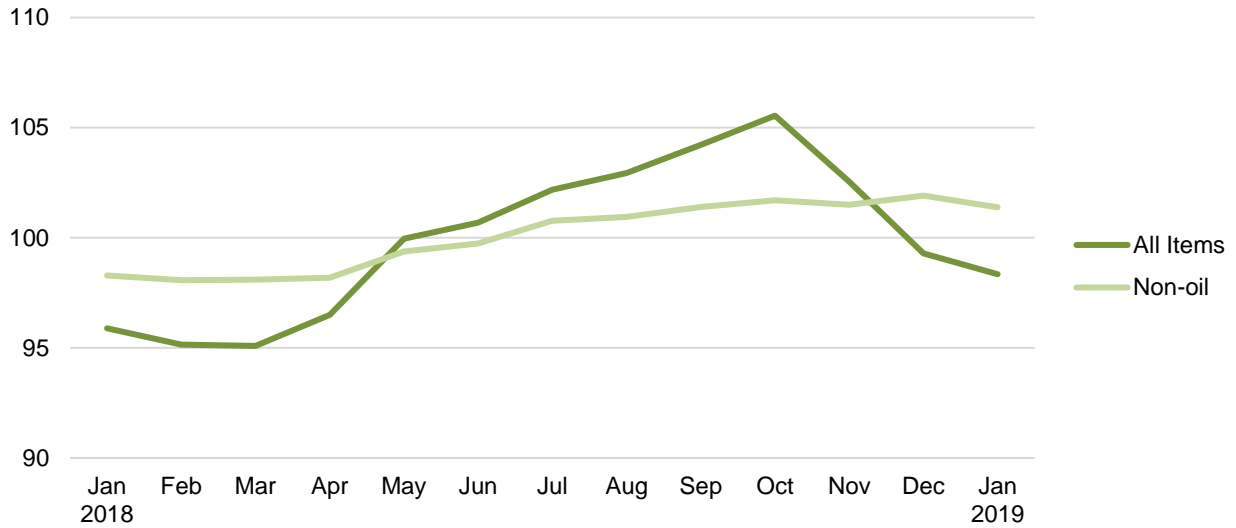


Chart 2: Month-on-Month Change

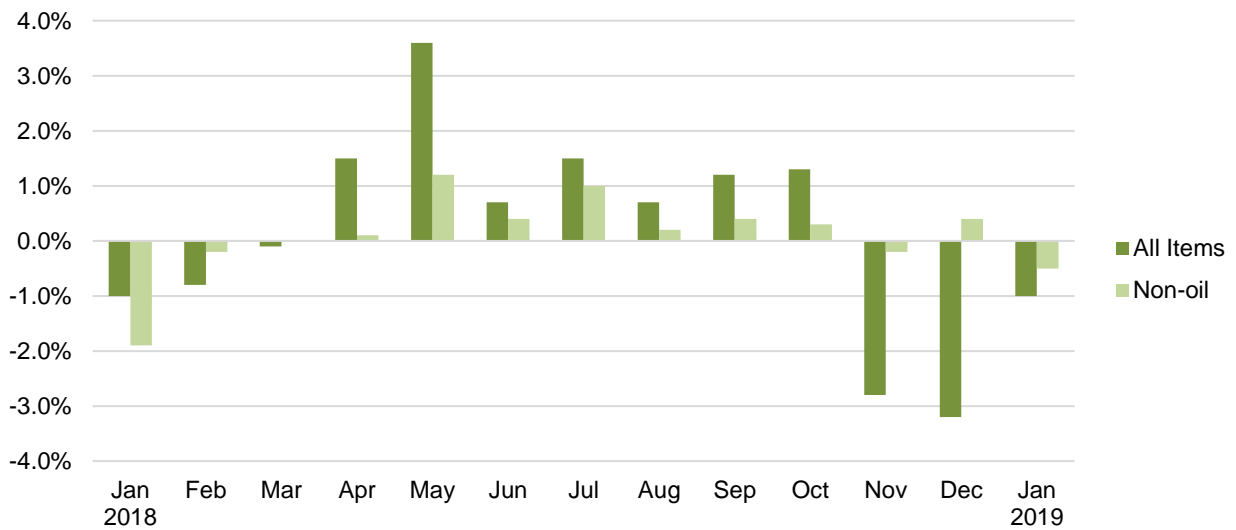
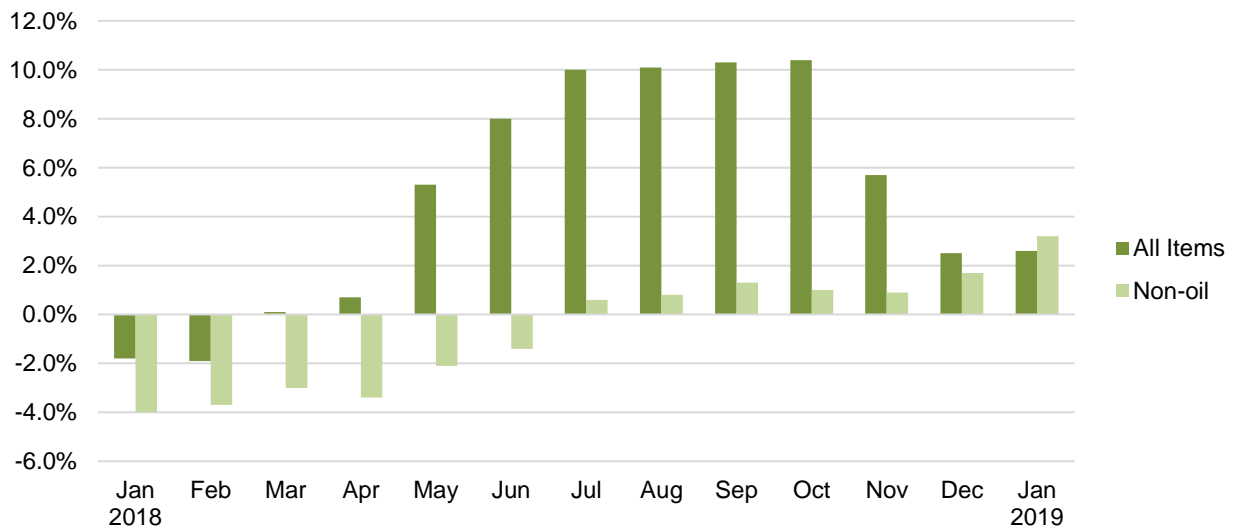


Chart 3: Year-on-Year Change



Export Price Index (2018 = 100) January 2019

Chart 4: Index

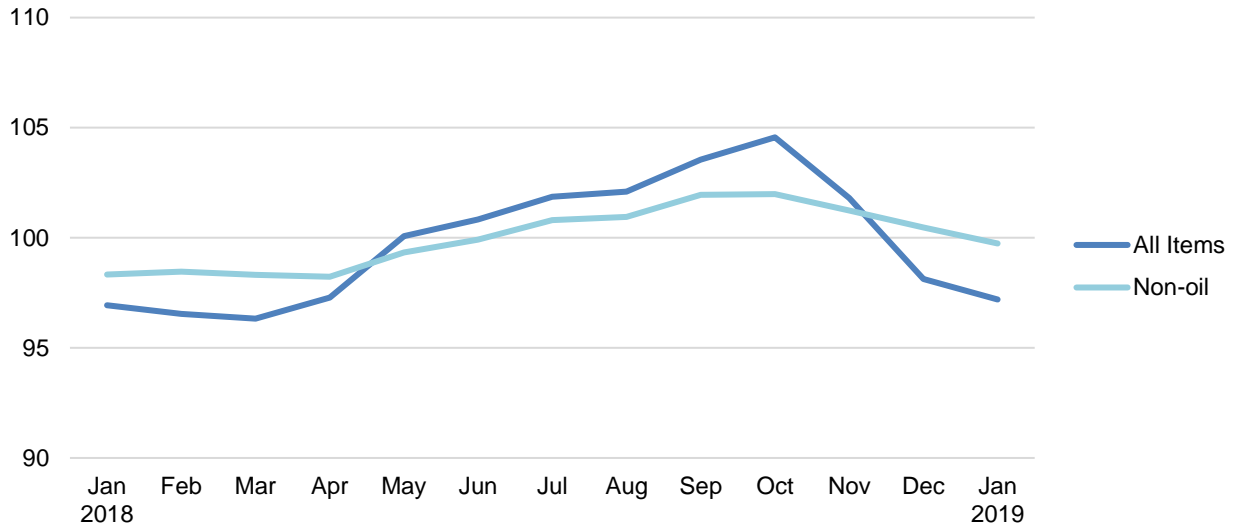


Chart 5: Month-on-Month Change

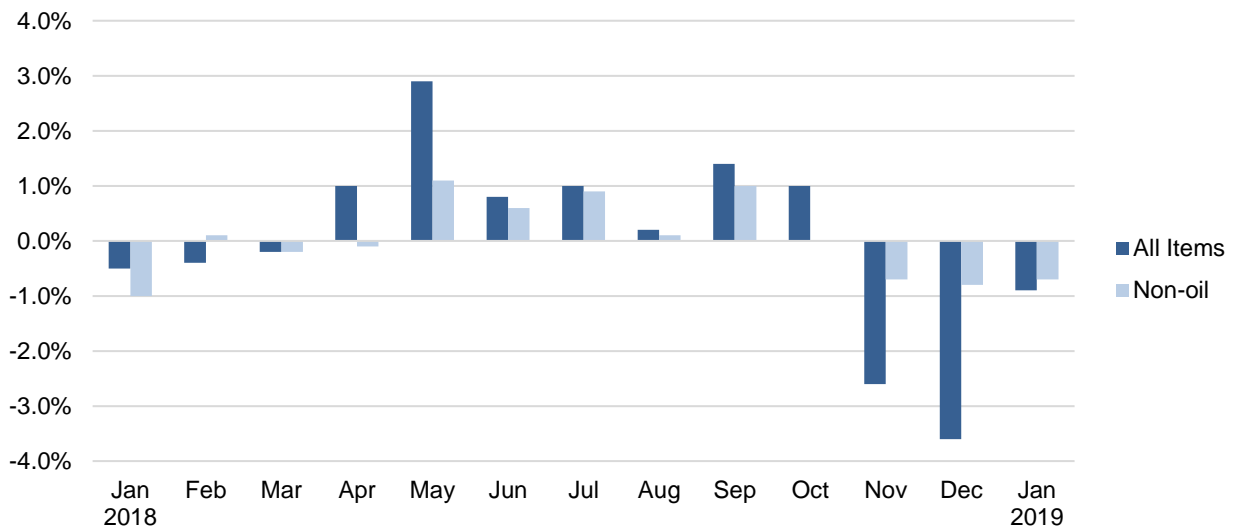


Chart 6: Year-on-Year Change

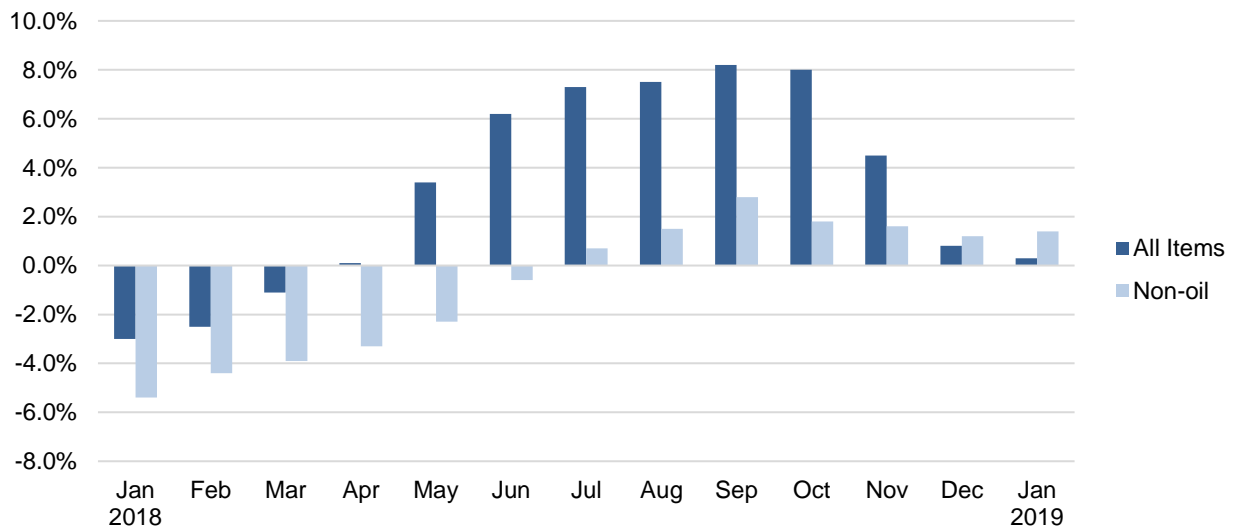


Table 1 Import Price Index

January 2019

Commodity section / division	Weights	Index (2018=100)			% Change		
					Dec 2018	Jan 2019	Jan 2019
		Nov 2018	Dec 2018	Jan 2019	Nov 2018	Dec 2018	Jan 2018
All Items	10,000	102.6	99.3	98.4	-3.2	-1.0	2.6
Non-oil Items	7,410	101.5	101.9	101.4	0.4	-0.5	3.2
Food & Live Animals	247	100.8	101.0	101.3	0.1	0.3	1.3
Live animals	9	97.4	98.2	99.8	0.9	1.6	-0.4
Meat & meat preparations	31	97.6	98.0	97.9	0.3	-0.1	-4.6
Dairy products & birds' eggs	30	102.7	104.4	103.0	1.7	-1.3	2.6
Fish seafood & preparations	34	100.4	99.9	101.3	-0.5	1.4	2.5
Cereals & cereal preparations	24	101.8	101.3	101.1	-0.6	-0.2	4.8
Vegetables & fruit	48	101.9	102.1	103.1	0.2	1.0	0.9
Sugar, sugar preparations & honey	9	101.4	100.3	99.3	-1.1	-1.0	-2.5
Coffee, tea, cocoa, spices & manufactures	28	99.2	99.2	98.4	-	-0.7	-1.1
Animal feeding stuff (excl unmilled cereals)	4	98.8	98.0	100.4	-0.8	2.4	-3.0
Miscellaneous food preparations	31	103.0	103.0	104.2	-	1.2	7.2
Beverages & Tobacco	112	101.0	100.9	100.7	-0.1	-0.1	2.6
Beverages	84	100.4	100.3	100.4	-	-	1.3
Tobacco & manufactures	28	102.9	102.6	101.9	-0.3	-0.7	6.6
Crude Materials (excl fuels)	84	100.7	100.4	99.7	-0.3	-0.7	1.4
Oil seeds & oleaginous fruits	2	101.2	100.0	97.2	-1.2	-2.9	1.0
Crude rubber	19	102.0	101.5	101.3	-0.4	-0.2	2.9
Cork & wood	3	102.0	102.0	104.4	-	2.3	8.3
Crude fertilizers & minerals	30	100.8	100.8	100.6	-0.1	-0.1	1.5
Metalliferous ores & metal scrap	17	95.8	97.7	94.4	2.0	-3.4	-7.0
Crude animal & vegetable materials nes	13	104.8	101.2	101.2	-3.4	-	9.1
Mineral Fuels, Lubricants & Related Materials	2,590	105.7	91.9	89.7	-13.0	-2.4	0.9
Petroleum & products & related materials	2,431	104.9	91.3	89.3	-13.0	-2.2	0.3
Gas	159	116.6	100.5	95.2	-13.8	-5.3	10.7
Animal & Vegetable Oils, Fats & Waxes	27	90.4	90.3	90.1	-0.2	-0.2	-16.5
Fixed vegetable fats & oils	27	90.4	90.3	90.1	-0.2	-0.2	-16.5
Chemicals & Chemical Products	888	101.0	100.2	98.6	-0.8	-1.6	0.4
Organic chemicals	216	100.4	97.1	96.5	-3.2	-0.6	-1.6
Inorganic chemicals	35	92.8	92.9	93.1	0.1	0.2	-12.4
Dyeing, tanning & colouring materials	33	102.0	101.4	101.4	-0.6	0.1	3.2
Medicinal & pharmaceutical products	101	100.7	101.3	103.5	0.7	2.1	4.6
Essential oils & perfume; toilet cleaning products	147	101.2	101.8	101.7	0.6	-0.1	2.9
Plastics in primary forms	164	100.9	99.5	95.2	-1.4	-4.4	-1.0
Plastics in non-primary forms	38	101.3	101.8	101.7	0.5	-0.1	3.3
Chemical materials & products nes	154	103.6	104.0	98.8	0.3	-4.9	1.5
Manufactured Goods	505	100.0	100.1	99.8	0.1	-0.3	0.9
Rubber manufactures nes	25	99.1	100.4	99.1	1.4	-1.3	-1.7
Paper manufactures	51	102.2	101.9	100.7	-0.3	-1.2	5.8
Textile manufactures	26	101.5	101.9	101.3	0.4	-0.6	4.1
Non-metal mineral manufactures nes	60	100.4	100.2	100.1	-0.3	-0.1	1.6
Iron & steel	131	99.8	99.4	99.4	-0.4	-	1.2
Non-ferrous metals	84	97.6	97.9	97.2	0.3	-0.7	-4.2
Manufactures of metals nes	128	100.6	101.0	101.2	0.4	0.2	1.8
Machinery & Transport Equipment	4,690	102.1	102.9	102.3	0.8	-0.6	4.4
Power-generating machinery & equipment	526	101.5	102.9	103.8	1.4	0.9	6.0
Machinery specialized for particular industries	306	102.0	101.6	100.6	-0.4	-1.0	2.6
Metal working machinery	23	100.1	100.0	99.7	-0.1	-0.3	-1.1
General industrial machinery	281	101.5	101.4	101.1	-0.1	-0.3	3.0
Office machines & data-processing machines	457	102.9	103.5	103.2	0.5	-0.2	5.2
Telecommunication apparatus	390	98.2	104.8	103.8	6.8	-1.0	2.0
Electrical machinery apparatus nes, electrical parts	2,542	102.8	102.9	102.0	0.1	-0.9	4.8
Road vehicles	164	101.7	101.8	101.9	0.1	0.2	3.9
Miscellaneous Manufactured Articles	857	100.3	100.3	100.8	-	0.4	1.8
Prefab building, sanitary plumbing, lighting nes	12	100.0	100.0	105.9	-	5.9	5.9
Furniture, bedding, mattresses, cushions & others	26	100.1	99.7	100.0	-0.3	0.3	0.4
Travel goods, handbags & similar containers	54	100.7	100.7	104.6	-0.1	3.9	5.8
Articles of apparel & clothing accessories	79	100.9	100.8	100.6	-0.1	-0.2	2.8
Footwear	24	100.7	100.7	100.2	-	-0.5	0.7
Professional scientific & controlling instruments	275	100.9	100.9	102.0	-	1.2	4.6
Photographic & optical goods nes; watches & clocks	106	100.2	99.5	100.7	-0.7	1.2	1.2
Miscellaneous manufactured articles nes	283	99.7	100.0	98.8	0.3	-1.2	-1.6

Figures may not sum to total due to rounding.

Table 2 Export Price Index

January 2019

Commodity section / division	Weights	Index (2018=100)			% Change		
					Dec 2018	Jan 2019	Jan 2019
		Nov 2018	Dec 2018	Jan 2019	Nov 2018	Dec 2018	Jan 2018
All Items	10,000	101.8	98.1	97.2	-3.6	-0.9	0.3
Non-oil Items	8,022	101.2	100.5	99.7	-0.8	-0.7	1.4
Food & Live Animals	236	101.4	100.2	99.7	-1.2	-0.5	0.4
Dairy products & birds' eggs	5	101.6	102.1	102.1	0.5	-	7.1
Fish seafood & preparations	9	101.2	100.8	100.8	-0.4	-	0.7
Cereals & cereal preparations	7	100.5	100.4	100.4	-0.1	-	2.4
Vegetables & fruit	8	95.3	91.7	90.4	-3.8	-1.4	-11.9
Sugar, sugar preparations & honey	3	100.4	99.8	99.8	-0.5	-	-0.5
Coffee, tea, cocoa, spices & manufactures	26	101.0	101.1	100.6	0.1	-0.5	1.5
Animal feeding stuff (excl unmilled cereals)	7	103.1	102.7	101.7	-0.4	-0.9	5.6
Miscellaneous food preparations	171	101.7	100.2	99.8	-1.4	-0.5	0.4
Beverages & Tobacco	103	102.5	101.8	101.6	-0.7	-0.3	3.4
Beverages	75	101.9	101.1	101.1	-0.7	-	2.7
Tobacco & manufactures	28	104.1	103.6	102.7	-0.5	-0.8	5.2
Crude Materials (excl fuels)	91	103.5	103.2	100.9	-0.3	-2.2	4.5
Crude rubber	35	105.1	105.9	105.1	0.8	-0.7	10.6
Pulp and waste paper	26	108.8	108.2	102.8	-0.6	-4.9	9.3
Metalliferous ores & metal scrap	26	97.6	95.3	93.9	-2.4	-1.5	-5.8
Crude animal & vegetable materials nes	4	92.8	97.6	95.9	5.2	-1.8	-9.4
Mineral Fuels, Lubricants & Related Materials	1,978	104.1	88.6	86.9	-14.9	-2.0	-4.8
Petroleum & products & related materials	1,978	104.1	88.6	86.9	-14.9	-2.0	-4.8
Animal & Vegetable Oils, Fats & Waxes	5	99.6	98.6	98.5	-1.0	-0.1	-1.1
Fixed vegetable fats & oils	5	99.6	98.6	98.5	-1.0	-0.1	-1.1
Chemicals & Chemical Products	1,525	101.6	99.2	98.3	-2.3	-0.9	1.1
Organic chemicals	428	102.1	97.0	95.4	-5.0	-1.7	-
Inorganic chemicals	14	100.6	100.9	100.6	0.3	-0.3	-0.4
Dyeing, tanning & colouring materials	37	102.8	102.5	102.4	-0.3	-0.1	4.0
Medicinal & pharmaceutical products	250	100.0	99.7	98.5	-0.3	-1.3	-1.1
Essential oils & perfume; toilet cleaning products	232	99.8	99.7	99.3	-0.1	-0.3	-0.7
Plastics in primary forms	355	102.6	99.4	99.1	-3.1	-0.3	3.7
Plastics in non-primary forms	29	100.3	100.2	100.0	-0.1	-0.2	0.5
Chemical materials & products nes	181	102.8	101.9	101.1	-0.9	-0.8	3.9
Manufactured Goods	318	99.7	99.1	98.3	-0.6	-0.8	-0.8
Rubber manufactures nes	22	99.3	99.3	96.7	0.1	-2.6	-4.1
Paper manufactures	41	99.8	99.6	98.0	-0.2	-1.6	-0.3
Textile manufactures	19	100.0	100.2	101.1	0.2	0.9	2.7
Non-metal mineral manufactures nes	14	101.5	101.3	100.6	-0.2	-0.6	7.3
Iron & steel	66	103.7	103.1	102.7	-0.5	-0.4	7.5
Non-ferrous metals	67	95.1	93.3	92.4	-1.9	-0.9	-10.2
Manufactures of metals nes	89	99.8	99.5	98.9	-0.3	-0.6	-0.9
Machinery & Transport Equipment	4,836	100.9	100.6	99.9	-0.3	-0.7	1.3
Power-generating machinery & equipment	418	101.2	100.6	99.8	-0.6	-0.8	0.3
Machinery specialized for particular industries	437	96.8	96.6	94.4	-0.2	-2.3	-6.7
Metal working machinery	25	98.7	102.0	87.7	3.4	-14.0	-12.4
General industrial machinery	212	99.8	99.5	100.1	-0.3	0.6	0.8
Office machines & data-processing machines	467	102.0	102.2	101.3	0.2	-0.9	3.1
Telecommunication apparatus	366	99.1	96.7	92.7	-2.4	-4.1	-7.7
Electrical machinery apparatus nes, electrical parts	2,814	101.7	101.5	101.5	-0.2	-	3.8
Road vehicles	98	100.4	100.3	100.9	-	0.5	2.1
Miscellaneous Manufactured Articles	908	102.6	102.2	101.7	-0.5	-0.5	3.2
Prefab building, sanitary plumbing, lighting nes	3	99.6	99.9	99.4	0.2	-0.5	2.2
Furniture, bedding, mattresses, cushions & others	5	102.3	104.3	101.2	1.9	-3.0	3.5
Travel goods, handbags & similar containers	37	101.6	100.2	99.4	-1.4	-0.8	1.5
Articles of apparel & clothing accessories	40	103.9	106.6	106.7	2.7	0.1	14.4
Footwear	14	99.1	102.8	101.8	3.7	-1.0	-4.0
Professional scientific & controlling instruments	365	103.6	102.9	101.9	-0.7	-1.0	3.9
Photographic & optical goods nes; watches & clocks	98	99.4	99.3	98.8	-0.1	-0.6	-2.1
Miscellaneous manufactured articles nes	345	102.7	101.8	102.0	-0.8	0.2	3.4

Figures may not sum to total due to rounding.

Table 3 Import Price Index

Section	All Items	Non-oil Items	Food & Live Animals	Beverages & Tobacco	Crude Materials	Mineral Fuels	Animal & Vegetable Oils, Fats & Waxes	Chemicals & Chemical Products	Manufactured Goods	Machinery & Transport Equipment	Misc. Manufactured Articles
Weights	10,000	7,410	247	112	84	2,590	27	888	505	4,690	857
Index (2018=100)											
2015	82.5	97.7	101.5	104.7	88.0	52.0	70.1	92.0	94.2	98.7	100.5
2016	90.1	100.4	99.5	99.6	97.8	61.5	110.6	93.8	92.3	102.4	101.8
2017	95.3	101.0	101.2	100.2	100.5	79.7	114.7	96.7	96.4	102.2	101.6
2018	100.0	100.0	100.0	100.0	100.0	100.0	100.0	100.0	100.0	100.0	100.0
2018											
Jan	95.9	98.3	100.0	98.2	98.3	88.9	107.9	98.2	98.9	98.0	99.0
Feb	95.1	98.1	99.9	98.2	98.5	86.6	107.8	98.6	99.0	97.5	99.3
Mar	95.1	98.1	98.7	98.2	98.8	86.3	106.4	98.7	99.1	97.5	99.4
Apr	96.5	98.2	98.0	99.4	98.0	91.5	104.3	98.8	99.1	97.8	99.1
May	99.9	99.4	99.1	100.2	99.8	101.6	103.6	99.7	100.3	99.1	100.0
Jun	100.7	99.7	99.2	100.4	100.5	103.4	101.1	100.0	100.8	99.5	100.2
Jul	102.2	100.8	100.1	100.7	101.4	106.3	100.0	100.8	100.9	100.9	100.4
Aug	103.0	100.9	100.8	100.9	101.6	108.7	97.8	101.0	100.8	101.1	100.4
Sep	104.2	101.4	101.1	101.0	101.2	112.4	96.1	101.4	100.4	101.7	100.6
Oct	105.6	101.7	101.2	101.0	100.8	116.7	94.3	101.7	100.6	102.1	100.8
Nov	102.6	101.5	100.8	101.0	100.7	105.7	90.4	101.0	100.0	102.1	100.3
Dec	99.3	101.9	101.0	100.9	100.4	91.9	90.3	100.2	100.1	102.9	100.3
2019											
Jan	98.4	101.4	101.3	100.7	99.7	89.7	90.1	98.6	99.8	102.3	100.8
Percentage Change over same period of previous year (%)											
2016	9.1	2.8	-2.0	-4.9	11.2	18.4	57.8	2.0	-2.1	3.8	1.2
2017	5.8	0.6	1.7	0.7	2.7	29.5	3.7	3.1	4.5	-0.3	-0.1
2018	4.9	-1.0	-1.2	-0.2	-0.5	25.5	-12.8	3.4	3.7	-2.1	-1.6
2018											
Jan	-1.8	-4.0	-2.0	-2.7	-4.1	5.5	-14.5	-0.9	2.4	-5.5	-4.0
Feb	-2.0	-3.7	-1.7	-2.4	-4.6	3.4	-13.4	0.4	2.5	-5.2	-3.2
Mar	0.1	-3.0	-2.2	-2.0	-2.8	11.0	-10.7	1.5	2.9	-4.6	-2.7
Apr	0.7	-3.4	-2.7	-0.7	-3.4	14.7	-9.2	1.8	3.7	-5.2	-3.3
May	5.3	-2.1	-1.7	-0.1	-0.5	32.4	-11.4	3.4	5.1	-4.0	-1.8
Jun	8.0	-1.4	-1.7	0.2	1.7	45.0	-11.1	4.6	5.8	-3.2	-1.6
Jul	10.1	0.6	-0.8	0.8	2.8	46.2	-9.6	6.7	6.2	-0.7	-0.5
Aug	10.1	0.8	-0.2	0.2	2.3	44.8	-10.9	6.3	4.7	-0.2	-0.6
Sep	10.4	1.3	-0.4	0.5	1.1	42.6	-14.7	5.9	3.7	0.7	-0.6
Oct	10.4	1.0	0.2	1.1	0.5	43.1	-16.1	4.7	2.7	0.5	-0.4
Nov	5.7	0.9	-0.4	1.2	0.7	21.1	-18.0	4.3	2.3	0.6	-0.6
Dec	2.5	1.7	-0.3	1.3	0.8	5.0	-14.6	2.6	2.5	1.9	0.3
2019											
Jan	2.6	3.2	1.3	2.6	1.4	0.9	-16.5	0.4	0.9	4.4	1.8

Table 4 Export Price Index

Section	All Items	Non-oil Items	Food & Live Animals	Beverages & Tobacco	Crude Materials	Mineral Fuels	Animal & Vegetable Oils, Fats & Waxes	Chemicals & Chemical Products	Manufactured Goods	Machinery & Transport Equipment	Misc. Manufactured Articles
Weights	10,000	8,022	236	103	91	1,978	5	1,525	318	4,836	908
Index (2018=100)											
2015	88.5	99.8	103.6	107.2	74.8	56.3	84.6	97.5	96.3	101.2	97.8
2016	94.2	101.8	102.2	103.4	88.0	64.7	97.7	96.8	95.6	104.2	100.8
2017	96.9	100.9	100.0	101.7	101.1	81.4	102.8	97.7	98.2	102.0	101.5
2018	100.0	100.0	100.0	100.0	100.0	100.0	100.0	100.0	100.0	100.0	100.0
2018											
Jan	96.9	98.3	99.3	98.2	96.6	91.3	99.6	97.3	99.1	98.6	98.5
Feb	96.5	98.5	98.8	98.4	96.5	88.7	99.7	97.8	99.9	98.6	98.4
Mar	96.3	98.3	98.0	97.5	96.5	88.3	100.0	97.8	99.2	98.5	98.3
Apr	97.3	98.2	98.5	98.4	96.9	93.5	100.2	97.9	99.9	98.3	97.8
May	100.1	99.3	97.7	99.6	98.5	103.1	100.7	99.6	100.8	99.4	98.8
Jun	100.8	99.9	99.5	99.8	99.8	104.6	100.5	100.4	101.4	99.8	99.2
Jul	101.9	100.8	101.3	100.7	100.4	106.1	100.6	101.7	100.7	100.5	100.7
Aug	102.1	100.9	102.2	100.1	102.4	106.8	100.2	101.7	99.8	100.9	100.2
Sep	103.5	101.9	101.2	101.3	102.1	110.0	100.2	102.4	99.7	102.2	100.6
Oct	104.6	102.0	101.8	101.8	103.6	115.0	100.1	102.6	100.8	101.7	102.7
Nov	101.8	101.2	101.4	102.5	103.5	104.1	99.6	101.6	99.7	100.9	102.6
Dec	98.1	100.5	100.2	101.8	103.2	88.6	98.6	99.2	99.1	100.6	102.2
2019											
Jan	97.2	99.7	99.7	101.6	100.9	86.9	98.5	98.3	98.3	99.9	101.7
Percentage Change over same period of previous year (%)											
2016	6.5	2.1	-1.3	-3.6	17.7	15.0	15.5	-0.7	-0.7	2.9	3.1
2017	2.9	-0.9	-2.2	-1.7	14.9	25.7	5.2	0.9	2.7	-2.1	0.7
2018	3.2	-0.9	-	-1.7	-1.1	22.9	-2.7	2.3	1.9	-1.9	-1.5
2018											
Jan	-3.0	-5.4	-2.0	-6.0	-7.9	8.0	-6.1	-1.8	-	-7.0	-4.9
Feb	-2.5	-4.4	-2.1	-5.6	-8.5	6.1	-8.0	-1.7	1.7	-5.6	-4.4
Mar	-1.1	-3.9	-2.0	-5.2	-8.3	12.6	-7.4	-1.7	1.1	-4.9	-3.8
Apr	0.1	-3.3	-2.9	-4.1	-5.7	16.7	-5.7	-0.6	2.1	-4.3	-4.4
May	3.4	-2.3	-3.5	-2.3	-2.2	32.3	-2.9	1.6	2.9	-3.6	-3.1
Jun	6.2	-0.6	-1.4	-2.8	1.3	42.1	-0.8	3.8	4.8	-1.9	-2.3
Jul	7.3	0.7	2.7	-0.3	2.9	41.4	0.3	5.9	3.3	-0.8	-0.4
Aug	7.5	1.5	4.0	-0.8	2.8	37.0	0.9	6.1	1.6	0.5	-0.5
Sep	8.2	2.8	3.0	1.2	1.5	33.8	1.1	6.5	1.0	2.4	0.1
Oct	8.0	1.8	2.5	1.6	3.7	36.7	-0.4	5.2	1.9	0.8	2.0
Nov	4.5	1.6	1.3	2.6	4.6	16.9	-1.0	4.2	1.2	0.7	2.0
Dec	0.8	1.2	0.6	2.4	3.8	-1.5	-1.5	1.0	1.0	0.9	2.5
2019											
Jan	0.3	1.4	0.4	3.4	4.5	-4.8	-1.1	1.1	-0.8	1.3	3.2

NOTATIONS

- nes not elsewhere specified
- nil or negligible

NOTES

The Import and Export Price Indices report contains statistics that are the most recent available at the time of its preparation.

Some statistics, particularly those for the most recent time periods, are provisional and may be subject to revision in later issues.