



Import & Export Price Indices January 2020

IMPORT AND EXPORT PRICE INDICES, January 2020
ISSN 2591-7463

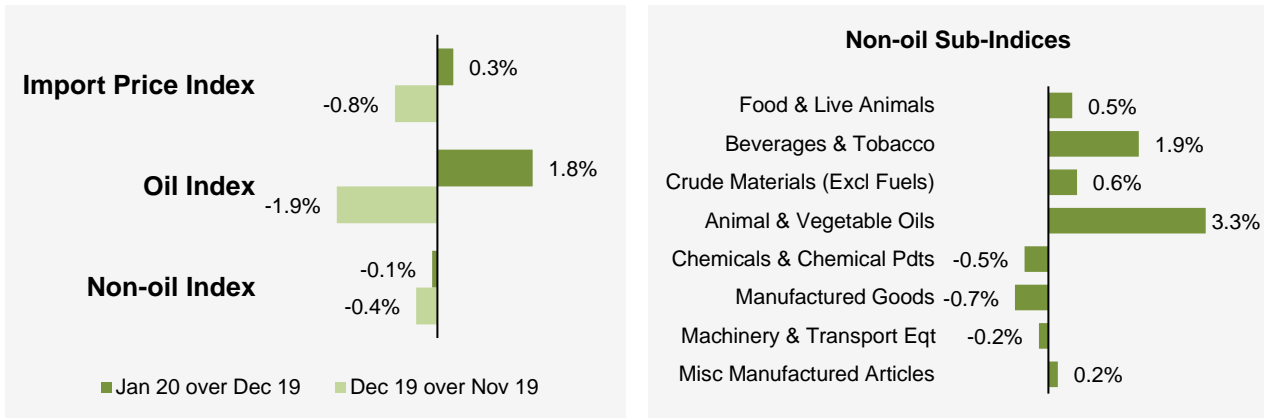
© Department of Statistics, Ministry of Trade & Industry, Republic of Singapore

Reproducing or quoting any part of this publication is permitted, provided this publication is accredited as the source. Please refer to the Statistics Singapore Website Terms of Use (<http://www.singstat.gov.sg/terms-of-use>) for more details on the conditions of use of this publication.

Statistical activities conducted by the Singapore Department of Statistics are governed by the provisions of the Statistics Act (Cap. 317). The Act guarantees the confidentiality of information collected from individuals and companies. It spells out the legislative authority and responsibility of the Chief Statistician. The Act is available in the Department's Website (www.singstat.gov.sg).

Import Price Index (2018 = 100) January 2020

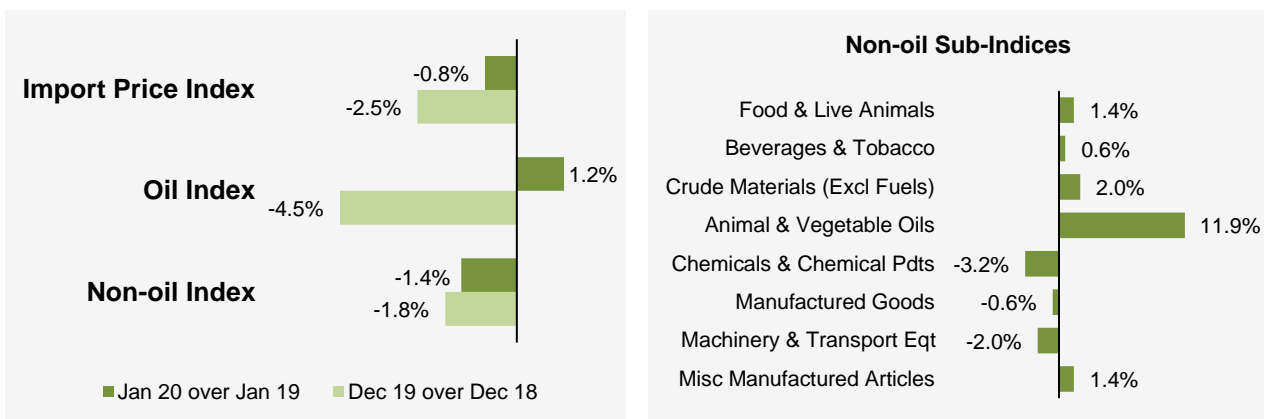
Month-on-Month Change



The Import Price Index rose 0.3% in January 2020, in contrast to the 0.8% decrease in December 2019. The Oil index went up 1.8%, against the 1.9% decrease in the previous month. The Non-oil index fell 0.1%, extending the 0.4% decline in December 2019.

For the Non-oil sub-indices, declines were led by the Chemicals & Chemical Products (-0.5%) and Machinery & Transport Equipment (-0.2%) indices. Increases in the Beverages & Tobacco (1.9%) index, due mainly to higher prices of alcoholic beverages, and the Miscellaneous Manufactured Articles (0.2%) index partially moderated the declines.

Year-on-Year Change

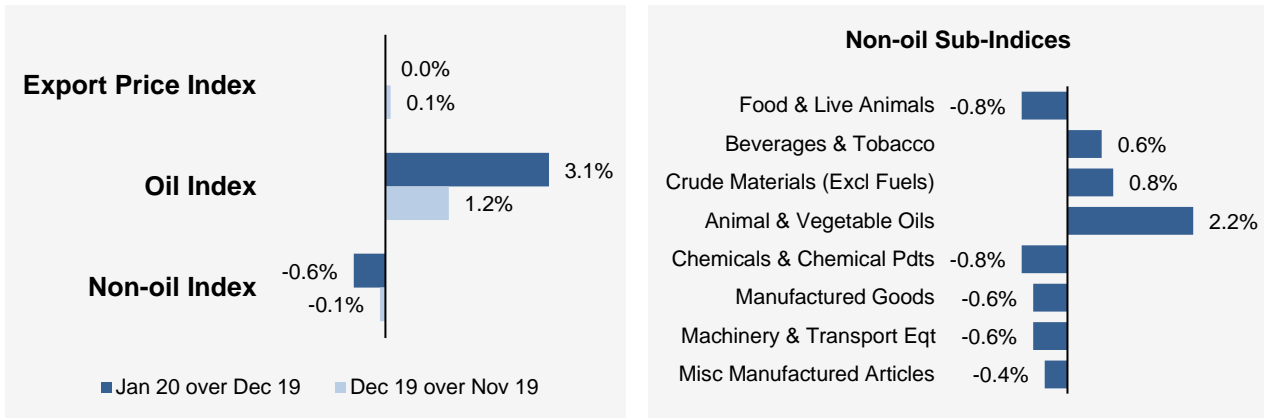


The Import Price Index fell 0.8% in January 2020 from a year ago, extending the 2.5% decrease in December 2019. The Oil index rose 1.2% while the Non-oil index fell 1.4%.

For the Non-oil sub-indices, lower prices of Chemicals & Chemical Products (-3.2%), Machinery & Transport Equipment (-2.0%) and Manufactured Goods (-0.6%) were partially offset by higher prices of Animal & Vegetable Oils (11.9%), Crude Materials (2.0%), Miscellaneous Manufactured Articles (1.4%), Food & Live Animals (1.4%) and Beverages & Tobacco (0.6%).

Export Price Index (2018 = 100) January 2020

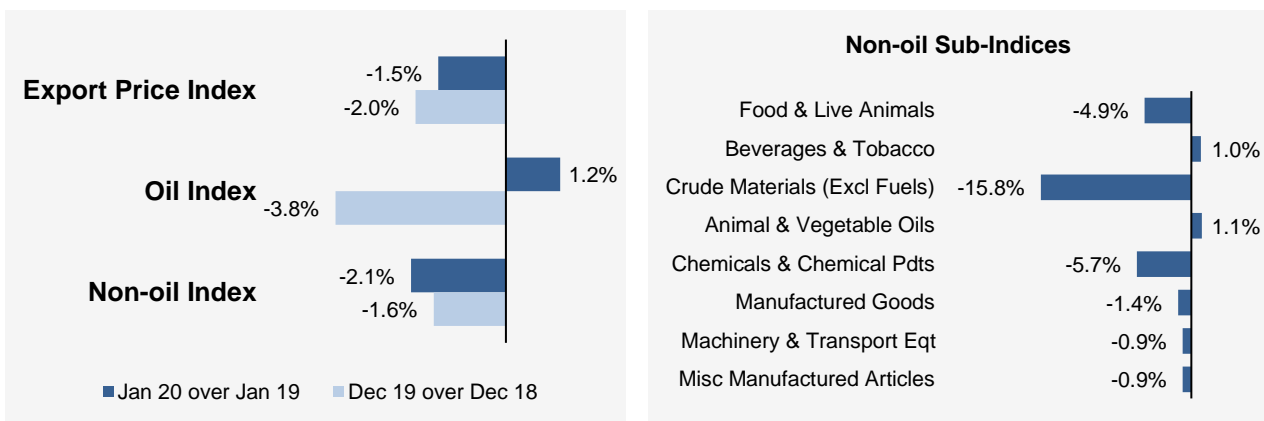
Month-on-Month Change



The Export Price Index was unchanged in January 2020, after increasing 0.1% in December 2019. The Oil index rose 3.1%, extending the 1.2% increase in the previous month. The Non-oil index fell 0.6%, after the 0.1% decline in December 2019.

For the Non-oil sub-indices, declines led by the Chemicals & Chemical Products (-0.8%) and Machinery & Transport Equipment (-0.6%) indices were partially moderated by increases in the Crude Materials (0.8%) and Beverages & Tobacco (0.6%) indices.

Year-on-Year Change



The Export Price Index fell 1.5% in January 2020 from a year ago, following the 2.0% decrease in December 2019. The Oil index rose 1.2% while the Non-oil index fell 2.1%.

For the Non-oil sub-indices, lower prices of Crude Materials (-15.8%), Chemicals & Chemical Products (-5.7%), Food & Live Animals (-4.9%), Manufactured Goods (-1.4%), Machinery & Transport Equipment (-0.9%) and Miscellaneous Manufactured Articles (-0.9%) were partially offset by higher prices of Animal & Vegetable Oils (1.1%) and Beverages & Tobacco (1.0%).

Technical Note

The **Import Price Index (IPI)** is used primarily as an indicator to track the price trends of imported goods into Singapore. Prices of imports, valued at cif (cost, insurance and freight) are obtained monthly from major importers. The weighting pattern of the index is derived from import statistics for 2018.

The **Export Price Index (EPI)** measures changes in the price of all exports of merchandise from Singapore, including re-exports. In general, prices are obtained from major exporters of the selected commodities. Prices used in the index computation, are the prices of goods that physically leave Singapore's main ports of export; also termed as free on board prices. The weights of the index are derived from the distribution of export by commodity in 2018.

Index Formula

The 2018-based series is compiled using the Laspeyres formula where the price and weight reference periods are aligned to the year 2018. The geometric mean formula has been adopted in the computation of unweighted elementary aggregate price indices. The arithmetic mean formula is applied in compiling indices at higher levels of aggregation where weights of specific sub-indices are available.

Measurement of Changes in Price Indices

Change over previous month compares the index of the month with that of the preceding month. Such comparisons measure the change in the price index between two consecutive months. They serve as useful short-term indicators of the price movements.

Change over same period of previous year measures change in the index over a twelve-month period. Such comparisons compare the movement in the price index between similar months in two consecutive years.

Linking the Old 2012-Based Price Index Series to the New 2018-Based Price Index Series

The IPI and EPI have been rebased from base year 2012 to base year 2018. To facilitate comparison of the historical price indices across base years, the old 2012-based series are linked to the new 2018-based series by re-scaling them via a Linked Coefficient. The Linked Coefficient is the ratio of the annual 2018-based index in 2018 to the annual 2012-based index in 2018.

Example : Linking the old Iron & Steel Index series for IPI prior to 2018, to the 2018-based Iron & Steel Index (2018=100)

1) Calculate the linked coefficient

Year	Iron & Steel Index (2012=100)	Iron & Steel Index (2018=100)	Linked Coefficient
2018	93.4	100.0	$100.0 \div 93.4 = 1.071$

2) Re-scaling the old series to the 2018-based series using the Linked Coefficient

Year	Month	Iron & Steel Index (2012=100)	Iron & Steel Index (2018=100)
2016	Dec	84.0	$84.0 \times 1.071 = 90.0$
2017	Jan	85.6	$85.6 \times 1.071 = 91.7$

Linking Method for Maintaining the Old Index Reference Period

To continue the old 2012-based index series going forward in time, re-scale the new 2018-based index series to the old base year 2012 level, via a Linked Coefficient. The Linked Coefficient is the ratio of the annual 2012-based index in 2018 to the annual 2018-based index in 2018.

Example : Linking the new 2018-based Iron & Steel Index series for IPI to the 2012-based Iron & Steel Index (2012=100)

1) Calculate the linked coefficient

Year	Iron & Steel Index (2018=100)	Iron & Steel Index (2012=100)	Linked Coefficient
2018	100.0	93.4	$93.4 \div 100.0 = 0.934$

2) Re-scaling the new series to the 2012-based series using the Linked Coefficient

Year	Month	Iron & Steel Index (2018=100)	Iron & Steel Index (2012=100)
2019	Jan	98.6	$98.6 \times 0.934 = 92.1$
2019	Feb	102.4	$102.4 \times 0.934 = 95.6$

Index Revision

The indices may be revised when late returns and amendments received from respondents are incorporated.

Dissemination of Data

The Import and Export Price Indices are available on the SingStat Website (www.singstat.gov.sg/tablebuilder). Excel tables for this month's report are available at <https://www.singstat.gov.sg/publications/economy/import-export-price-indices> or through the QR code below:



Import Price Index (2018 = 100) January 2020

Chart 1: Index

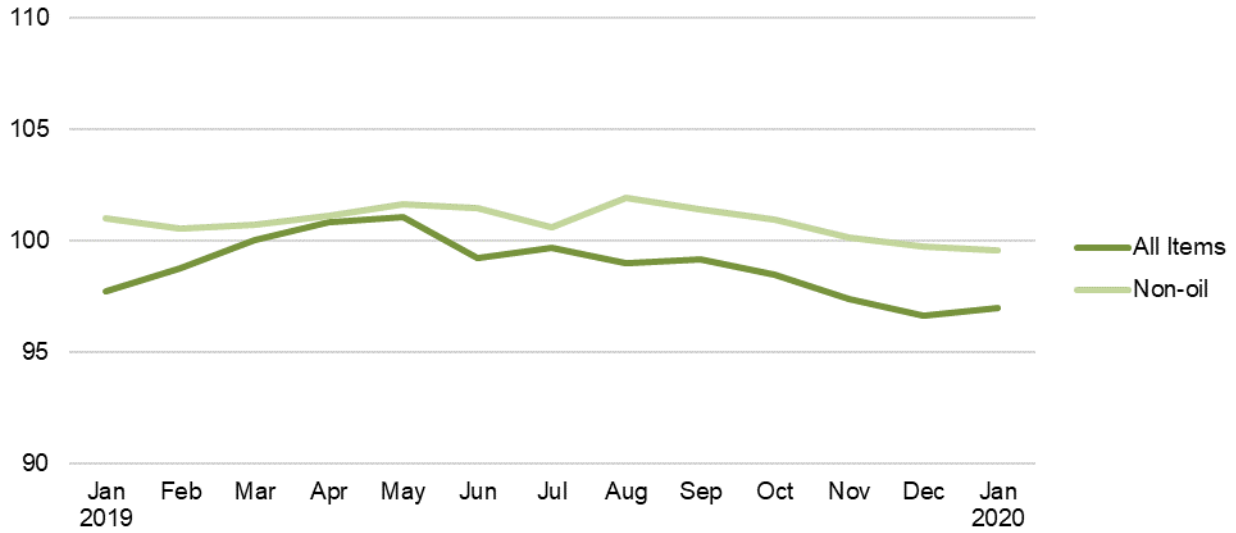


Chart 2: Month-on-Month Change

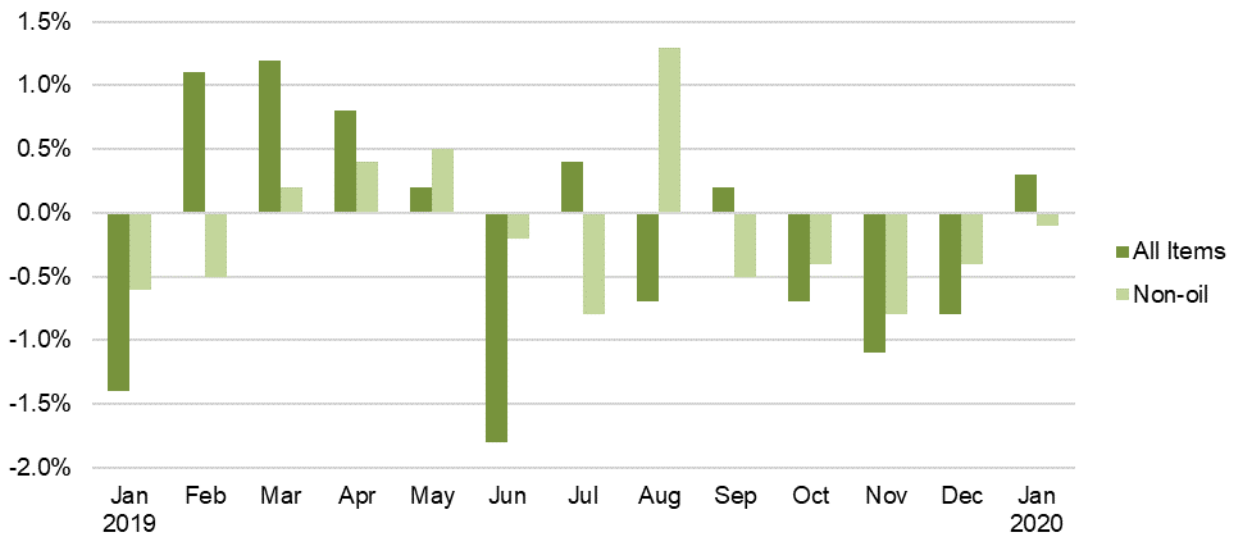
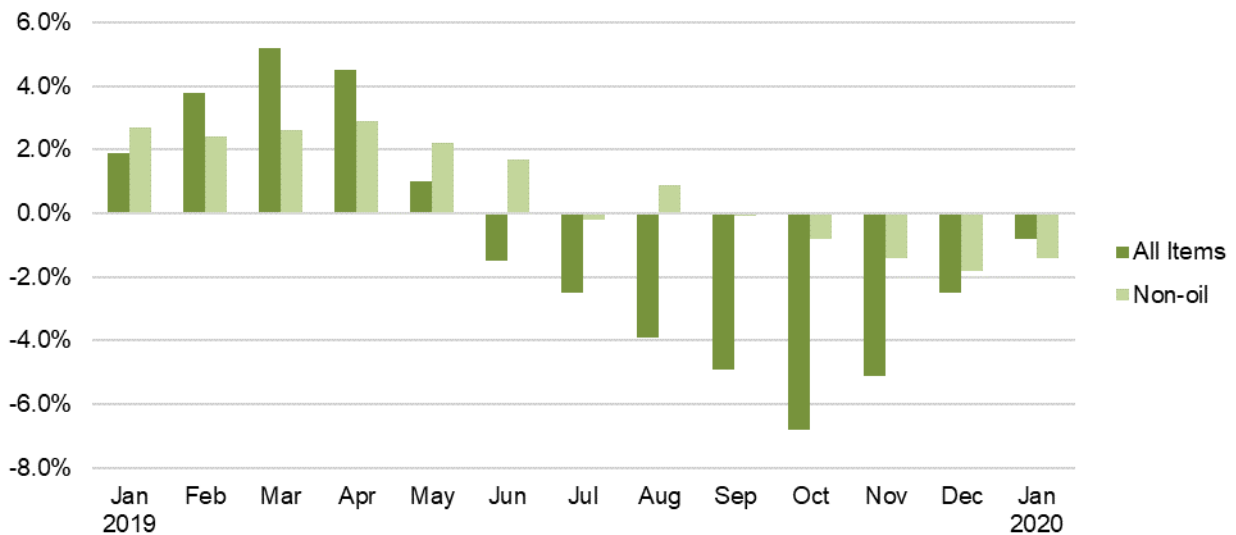


Chart 3: Year-on-Year Change



Export Price Index (2018 = 100) January 2020

Chart 4: Index

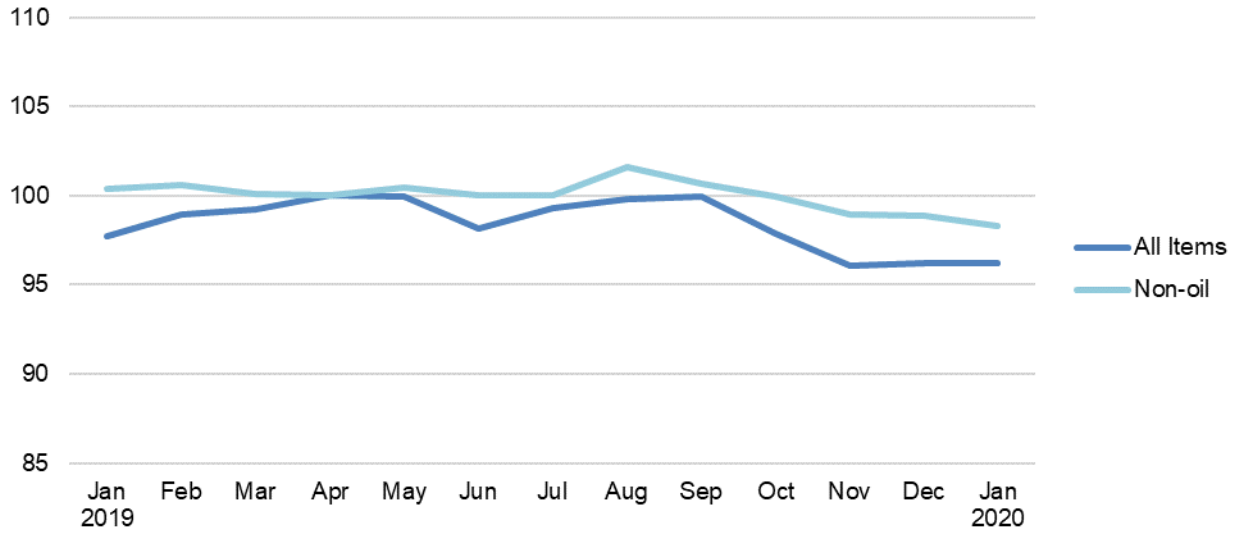


Chart 5: Month-on-Month Change

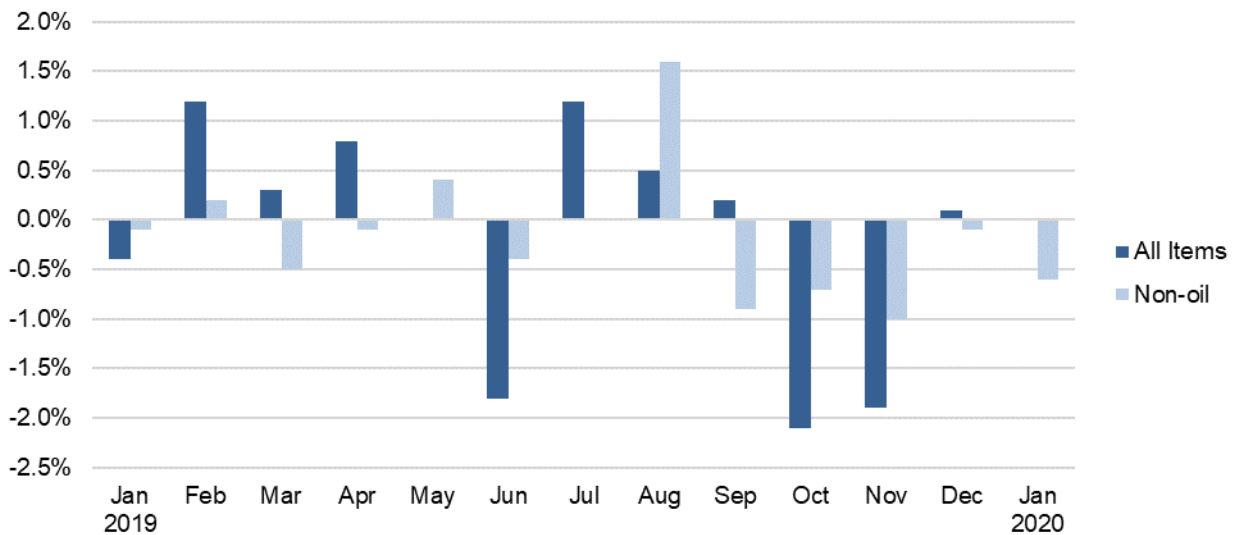


Chart 6: Year-on-Year Change

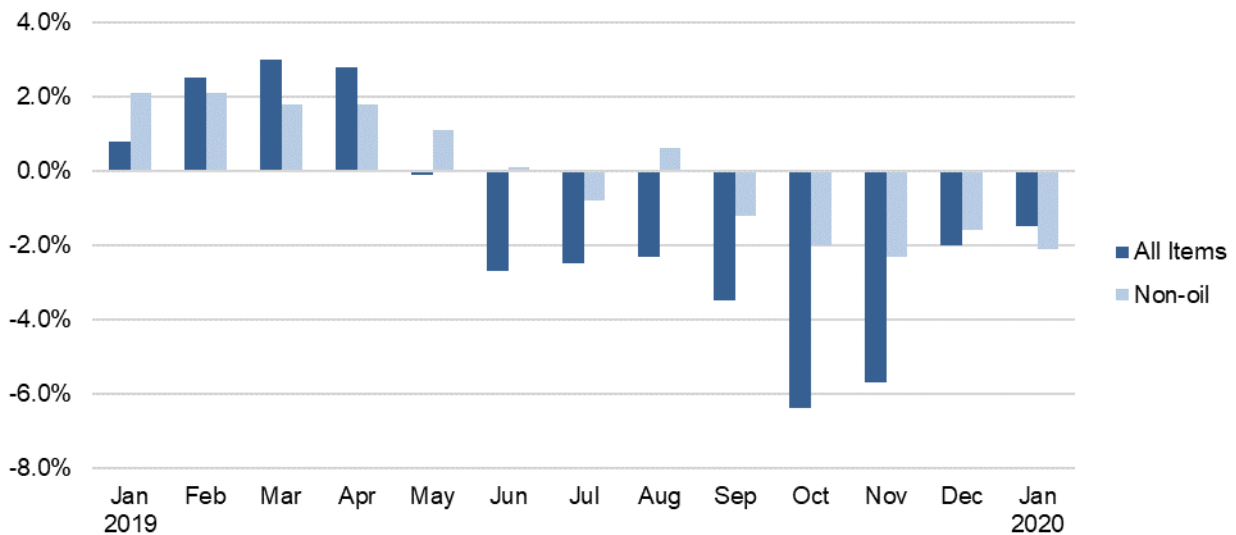


Table 1 Import Price Index

January 2020

Commodity section / division	Weights	Index (2018=100)			% Change		
					Dec 2019	Jan 2020	Jan 2020
		Nov 2019	Dec 2019	Jan 2020	Nov 2019	Dec 2019	Jan 2019
All Items	10,000	97.4	96.6	96.9	-0.8	0.3	-0.8
Non-oil Items	7,410	100.1	99.7	99.6	-0.4	-0.1	-1.4
Food & Live Animals	247	101.6	102.2	102.7	0.6	0.5	1.4
Live animals	9	97.5	97.6	98.6	0.1	1.0	-1.2
Meat & meat preparations	31	105.0	106.8	107.5	1.7	0.6	9.4
Dairy products & birds' eggs	30	105.8	103.8	104.1	-1.9	0.3	0.8
Fish seafood & preparations	34	97.3	98.0	98.9	0.8	0.9	-2.4
Cereals & cereal preparations	24	101.3	100.2	99.5	-1.1	-0.7	-1.6
Vegetables & fruit	48	102.3	104.9	106.4	2.6	1.4	3.7
Sugar, sugar preparations & honey	9	97.4	96.4	97.7	-1.0	1.4	-1.4
Coffee, tea, cocoa, spices & manufactures	28	96.7	96.8	96.7	0.1	-0.1	-1.8
Animal feeding stuff (excl unmilled cereals)	4	96.2	96.7	97.0	0.5	0.3	-3.3
Miscellaneous food preparations	31	105.8	106.4	106.3	0.6	-0.2	2.3
Beverages & Tobacco	112	99.7	99.5	101.4	-0.1	1.9	0.6
Beverages	84	98.8	98.7	101.5	-0.1	2.8	1.1
Tobacco & manufactures	28	102.3	102.0	101.2	-0.3	-0.8	-0.8
Crude Materials (excl fuels)	84	100.7	101.1	101.7	0.4	0.6	2.0
Oil seeds & oleaginous fruits	2	109.3	109.2	109.1	-0.1	-0.2	12.2
Crude rubber	19	108.3	108.0	107.5	-0.3	-0.5	6.1
Cork & wood	3	94.8	94.8	94.8	-	-	-9.2
Crude fertilizers & minerals	30	101.9	101.8	102.1	-	0.3	1.4
Metalliferous ores & metal scrap	17	88.5	90.1	93.6	1.8	3.9	-0.8
Crude animal & vegetable materials nes	13	103.9	104.8	103.9	0.8	-0.8	2.7
Mineral Fuels, Lubricants & Related Materials	2,590	89.5	87.8	89.4	-1.9	1.8	1.2
Petroleum & products & related materials	2,431	89.9	88.9	90.8	-1.1	2.1	3.4
Gas	159	83.3	70.2	66.9	-15.7	-4.7	-29.7
Animal & Vegetable Oils, Fats & Waxes	27	93.7	98.9	102.2	5.6	3.3	11.9
Fixed vegetable fats & oils	27	93.7	98.9	102.2	5.6	3.3	11.9
Chemicals & Chemical Products	888	97.3	96.4	95.9	-1.0	-0.5	-3.2
Organic chemicals	216	93.8	93.4	93.5	-0.4	0.1	-4.2
Inorganic chemicals	35	95.7	91.3	93.0	-4.6	1.8	-4.0
Dyeing, tanning & colouring materials	33	105.4	104.7	104.2	-0.6	-0.5	2.2
Medicinal & pharmaceutical products	101	102.7	102.7	99.6	-	-3.1	-4.2
Essential oils & perfume; toilet cleaning products	147	99.2	99.1	99.5	-0.1	0.4	-1.2
Plastics in primary forms	164	91.6	89.3	88.3	-2.5	-1.2	-6.8
Plastics in non-primary forms	38	101.9	101.5	100.8	-0.4	-0.6	-1.2
Chemical materials & products nes	154	100.6	99.5	99.6	-1.1	-	-0.9
Manufactured Goods	505	99.6	99.5	98.8	-0.1	-0.7	-0.6
Rubber manufactures nes	25	99.2	103.0	97.4	3.8	-5.4	-1.4
Paper manufactures	51	95.6	95.1	95.1	-0.6	-	-4.9
Textile manufactures	26	101.7	101.6	101.7	-0.1	0.1	0.6
Non-metal mineral manufactures nes	60	105.2	104.9	104.2	-0.3	-0.7	4.2
Iron & steel	131	98.5	97.7	97.0	-0.8	-0.7	-1.6
Non-ferrous metals	84	100.0	100.0	99.9	-0.1	-	2.6
Manufactures of metals nes	128	99.0	99.0	98.5	-	-0.6	-2.2
Machinery & Transport Equipment	4,690	100.2	99.7	99.6	-0.5	-0.2	-2.0
Power-generating machinery & equipment	526	105.5	105.0	106.6	-0.5	1.5	2.6
Machinery specialized for particular industries	306	100.9	100.6	100.1	-0.3	-0.5	-0.4
Metal working machinery	23	97.1	97.0	96.8	-0.1	-0.1	-2.9
General industrial machinery	281	100.9	100.6	99.4	-0.3	-1.1	-1.2
Office machines & data-processing machines	457	98.6	98.2	97.1	-0.3	-1.2	-5.8
Telecommunication apparatus	390	92.7	89.6	89.4	-3.3	-0.3	-8.2
Electrical machinery apparatus nes, electrical parts	2,542	100.4	100.2	100.1	-0.2	-0.1	-1.6
Road vehicles	164	101.0	101.0	99.1	-	-1.8	-2.7
Miscellaneous Manufactured Articles	857	102.4	102.2	102.4	-0.2	0.2	1.4
Prefab building, sanitary plumbing, lighting nes	12	100.7	100.7	101.8	-	1.0	-4.7
Furniture, bedding, mattresses, cushions & others	26	104.6	104.6	104.6	-	0.1	4.6
Travel goods, handbags & similar containers	54	104.3	104.3	103.0	-	-1.3	-1.6
Articles of apparel & clothing accessories	79	99.8	100.0	100.1	0.3	0.1	-0.8
Footwear	24	99.7	99.6	99.5	-0.1	-0.1	-0.7
Professional scientific & controlling instruments	275	103.5	103.1	102.6	-0.4	-0.5	0.5
Photographic & optical goods nes; watches & clocks	106	100.5	100.1	100.6	-0.4	0.5	0.1
Miscellaneous manufactured articles nes	283	102.5	102.3	103.4	-0.2	1.1	4.2

Figures may not sum to total due to rounding.

Table 2 Export Price Index

January 2020

Commodity section / division	Weights	Index (2018=100)			% Change		
					Dec 2019	Jan 2020	Jan 2020
		Nov 2019	Dec 2019	Jan 2020	Nov 2019	Dec 2019	Jan 2019
All Items	10,000	96.1	96.2	96.2	0.1	-	-1.5
Non-oil Items	8,022	99.0	98.9	98.3	-0.1	-0.6	-2.1
Food & Live Animals	236	97.0	95.7	94.9	-1.3	-0.8	-4.9
Dairy products & birds' eggs	5	100.5	101.4	101.4	0.9	-	1.1
Fish seafood & preparations	9	94.4	94.4	92.7	-0.1	-1.7	-7.8
Cereals & cereal preparations	7	97.2	97.5	97.4	0.3	-0.1	-2.4
Vegetables & fruit	8	87.1	87.7	87.4	0.7	-0.3	-3.3
Sugar, sugar preparations & honey	3	99.7	98.5	98.0	-1.2	-0.5	-2.0
Coffee, tea, cocoa, spices & manufactures	26	103.1	103.1	103.6	-0.1	0.5	3.5
Animal feeding stuff (excl unmilled cereals)	7	108.9	108.7	108.1	-0.2	-0.6	1.2
Miscellaneous food preparations	171	96.0	94.2	93.2	-1.9	-1.1	-6.6
Beverages & Tobacco	103	102.4	102.9	103.5	0.4	0.6	1.0
Beverages	75	102.1	102.8	103.9	0.7	1.0	1.4
Tobacco & manufactures	28	103.3	102.9	102.5	-0.3	-0.4	-0.2
Crude Materials (excl fuels)	91	82.3	81.6	82.3	-0.8	0.8	-15.8
Crude rubber	35	90.2	90.6	90.6	0.4	0.1	-10.0
Pulp and waste paper	26	70.3	65.8	65.7	-6.3	-0.2	-36.1
Metalliferous ores & metal scrap	26	81.3	82.8	84.9	1.9	2.6	-4.3
Crude animal & vegetable materials nes	4	96.9	97.9	99.3	1.0	1.4	2.8
Mineral Fuels, Lubricants & Related Materials	1,978	84.3	85.3	88.0	1.2	3.1	1.2
Petroleum & products & related materials	1,978	84.3	85.3	88.0	1.2	3.1	1.2
Animal & Vegetable Oils, Fats & Waxes	5	94.9	97.9	100.1	3.2	2.2	1.1
Fixed vegetable fats & oils	5	94.9	97.9	100.1	3.2	2.2	1.1
Chemicals & Chemical Products	1,525	92.8	91.8	91.1	-1.0	-0.8	-5.7
Organic chemicals	428	89.0	88.1	86.9	-1.0	-1.3	-6.6
Inorganic chemicals	14	102.8	103.3	104.8	0.6	1.5	1.2
Dyeing, tanning & colouring materials	37	100.2	99.4	98.4	-0.8	-1.0	-5.1
Medicinal & pharmaceutical products	250	95.5	95.5	95.0	-	-0.6	-4.6
Essential oils & perfume; toilet cleaning products	232	100.1	99.5	99.0	-0.6	-0.5	-
Plastics in primary forms	355	87.1	84.7	83.5	-2.8	-1.4	-13.3
Plastics in non-primary forms	29	100.2	100.1	103.1	-0.1	2.9	3.1
Chemical materials & products nes	181	96.5	96.2	96.5	-0.3	0.3	-0.2
Manufactured Goods	318	97.9	97.5	97.0	-0.3	-0.6	-1.4
Rubber manufactures nes	22	99.2	97.4	97.1	-1.8	-0.3	-0.1
Paper manufactures	41	99.3	99.2	98.9	-0.2	-0.3	1.0
Textile manufactures	19	100.0	99.6	99.1	-0.4	-0.5	-1.8
Non-metal mineral manufactures nes	14	98.6	98.3	97.9	-0.3	-0.4	-2.7
Iron & steel	66	101.2	100.8	99.1	-0.4	-1.7	-3.8
Non-ferrous metals	67	92.5	92.3	91.9	-0.1	-0.5	-0.3
Manufactures of metals nes	89	97.9	97.7	97.7	-0.2	-	-1.2
Machinery & Transport Equipment	4,836	100.8	101.1	100.5	0.3	-0.6	-0.9
Power-generating machinery & equipment	418	100.0	99.8	99.8	-0.2	-	0.2
Machinery specialized for particular industries	437	96.3	102.8	102.7	6.7	-0.1	-
Metal working machinery	25	101.5	102.1	101.5	0.5	-0.5	-0.8
General industrial machinery	212	102.0	101.2	101.1	-0.8	-0.1	0.9
Office machines & data-processing machines	467	102.2	102.1	101.4	-0.1	-0.7	0.6
Telecommunication apparatus	366	93.2	91.5	90.0	-1.8	-1.7	-8.7
Electrical machinery apparatus nes, electrical parts	2,814	102.3	102.1	101.3	-0.1	-0.8	-0.7
Road vehicles	98	102.2	102.1	103.4	-0.2	1.3	1.4
Miscellaneous Manufactured Articles	908	101.5	101.3	100.9	-0.2	-0.4	-0.9
Prefab building, sanitary plumbing, lighting nes	3	99.0	98.9	98.7	-0.1	-0.2	-0.8
Furniture, bedding, mattresses, cushions & others	5	101.0	100.8	100.9	-0.1	0.1	-0.3
Travel goods, handbags & similar containers	37	101.0	101.3	101.9	0.3	0.6	2.6
Articles of apparel & clothing accessories	40	111.9	114.3	111.0	2.1	-2.9	4.0
Footwear	14	98.7	98.4	97.9	-0.3	-0.5	-3.8
Professional scientific & controlling instruments	365	96.4	95.5	94.2	-0.9	-1.4	-7.5
Photographic & optical goods nes; watches & clocks	98	101.3	101.3	101.9	-	0.6	3.1
Miscellaneous manufactured articles nes	345	106.0	106.0	106.5	-	0.4	4.2

Figures may not sum to total due to rounding.

Table 3 Import Price Index

Section	All Items	Non-oil Items	Food & Live Animals	Beverages & Tobacco	Crude Materials	Mineral Fuels	Animal & Vegetable Oils, Fats & Waxes	Chemicals & Chemical Products	Manufactured Goods	Machinery & Transport Equipment	Misc. Manufactured Articles
Weights	10,000	7,410	247	112	84	2,590	27	888	505	4,690	857
Index (2018=100)											
2016	90.1	100.4	99.5	99.6	97.8	61.5	110.6	93.8	92.3	102.4	101.8
2017	95.3	101.0	101.2	100.2	100.5	79.7	114.7	96.7	96.4	102.2	101.6
2018	100.0	100.0	100.0	100.0	100.0	100.0	100.0	100.0	100.0	100.0	100.0
2019	99.0	100.9	101.5	100.4	101.2	93.4	90.4	98.6	99.9	101.3	102.0
2019											
Jan	97.7	101.0	101.2	100.7	99.7	88.3	91.3	99.1	99.4	101.6	100.9
Feb	98.8	100.5	100.2	100.6	100.1	93.8	90.7	98.7	100.4	100.9	100.7
Mar	100.0	100.7	100.2	100.7	100.2	97.9	89.6	99.2	100.6	101.2	100.6
Apr	100.8	101.1	100.2	100.6	101.6	99.9	90.3	99.6	100.0	101.7	100.7
May	101.0	101.6	101.0	101.0	102.9	99.3	89.1	99.5	100.4	102.3	101.5
Jun	99.2	101.4	101.8	100.9	102.0	92.8	87.6	99.1	99.6	102.0	102.0
Jul	99.6	100.6	102.3	100.0	101.5	96.9	86.2	98.4	99.2	100.9	102.2
Aug	99.0	101.9	102.6	100.7	102.4	90.6	88.6	98.9	100.0	102.3	104.1
Sep	99.1	101.4	102.6	100.3	101.2	92.7	89.1	98.8	100.5	101.5	103.9
Oct	98.4	100.9	102.5	100.0	100.8	91.4	89.5	98.2	100.0	101.1	103.4
Nov	97.4	100.1	101.6	99.7	100.7	89.5	93.7	97.3	99.6	100.2	102.4
Dec	96.6	99.7	102.2	99.5	101.1	87.8	98.9	96.4	99.5	99.7	102.2
2020											
Jan	96.9	99.6	102.7	101.4	101.7	89.4	102.2	95.9	98.8	99.6	102.4
Percentage Change over same period of previous year (%)											
2017	5.8	0.6	1.7	0.7	2.7	29.5	3.7	3.1	4.5	-0.3	-0.1
2018	4.9	-1.0	-1.2	-0.2	-0.5	25.5	-12.8	3.4	3.7	-2.1	-1.6
2019	-1.0	0.9	1.5	0.4	1.2	-6.6	-9.6	-1.4	-0.1	1.3	2.0
2019											
Jan	1.9	2.7	1.2	2.6	1.4	-0.6	-15.4	1.0	0.5	3.7	1.9
Feb	3.8	2.4	0.3	2.5	1.6	8.2	-15.8	0.2	1.4	3.4	1.5
Mar	5.2	2.6	1.5	2.6	1.4	13.4	-15.7	0.4	1.6	3.6	1.2
Apr	4.5	2.9	2.3	1.2	3.7	9.2	-13.5	0.9	0.9	3.9	1.5
May	1.0	2.2	1.9	0.7	3.2	-2.3	-14.0	-0.3	0.1	3.2	1.5
Jun	-1.5	1.7	2.6	0.5	1.5	-10.2	-13.4	-0.9	-1.2	2.5	1.8
Jul	-2.5	-0.2	2.2	-0.8	-	-8.8	-13.7	-2.4	-1.7	-	1.7
Aug	-3.9	0.9	1.7	-0.2	0.8	-16.7	-9.5	-2.1	-0.8	1.2	3.6
Sep	-4.9	-0.1	1.5	-0.6	-	-17.5	-7.3	-2.5	0.1	-0.2	3.2
Oct	-6.8	-0.8	1.3	-0.9	-	-21.7	-5.1	-3.5	-0.6	-1.0	2.6
Nov	-5.1	-1.4	0.8	-1.3	-	-15.3	3.6	-3.7	-0.4	-1.9	2.1
Dec	-2.5	-1.8	1.2	-1.4	0.7	-4.5	9.6	-3.8	-0.6	-2.5	1.8
2020											
Jan	-0.8	-1.4	1.4	0.6	2.0	1.2	11.9	-3.2	-0.6	-2.0	1.4

Table 4 Export Price Index

Section	All Items	Non-oil Items	Food & Live Animals	Beverages & Tobacco	Crude Materials	Mineral Fuels	Animal & Vegetable Oils, Fats & Waxes	Chemicals & Chemical Products	Manufactured Goods	Machinery & Transport Equipment	Misc. Manufactured Articles
Weights	10,000	8,022	236	103	91	1,978	5	1,525	318	4,836	908
Index (2018=100)											
2016	94.2	101.8	102.2	103.4	88.0	64.7	97.7	96.8	95.6	104.2	100.8
2017	96.9	100.9	100.0	101.7	101.1	81.4	102.8	97.7	98.2	102.0	101.5
2018	100.0	100.0	100.0	100.0	100.0	100.0	100.0	100.0	100.0	100.0	100.0
2019	98.6	100.1	97.6	102.6	90.6	92.4	97.1	94.8	98.7	101.8	101.9
2019											
Jan	97.7	100.4	99.8	102.5	97.7	86.9	99.0	96.7	98.3	101.4	101.8
Feb	98.9	100.6	99.2	102.5	96.4	92.1	96.6	96.2	99.3	102.0	101.6
Mar	99.2	100.1	97.8	102.0	95.6	95.8	97.1	96.2	99.4	101.2	101.4
Apr	100.0	100.0	96.2	102.3	95.1	100.1	96.6	96.0	99.1	101.4	100.7
May	100.0	100.4	97.3	102.5	94.4	98.2	96.9	96.8	98.7	101.6	101.7
Jun	98.1	100.0	97.7	102.3	91.5	90.6	95.0	94.9	98.0	101.7	101.3
Jul	99.3	100.0	98.1	102.2	90.3	96.5	98.8	94.3	98.2	101.9	101.2
Aug	99.8	101.6	97.8	102.6	89.1	92.5	100.4	94.7	99.3	103.9	103.6
Sep	100.0	100.7	97.9	103.2	87.4	97.0	97.6	94.1	99.6	102.7	103.6
Oct	97.9	100.0	97.2	103.3	85.4	89.4	94.3	93.3	98.6	102.0	102.7
Nov	96.1	99.0	97.0	102.4	82.3	84.3	94.9	92.8	97.9	100.8	101.5
Dec	96.2	98.9	95.7	102.9	81.6	85.3	97.9	91.8	97.5	101.1	101.3
2020											
Jan	96.2	98.3	94.9	103.5	82.3	88.0	100.1	91.1	97.0	100.5	100.9
Percentage Change over same period of previous year (%)											
2017	2.9	-0.9	-2.2	-1.7	14.9	25.7	5.2	0.9	2.7	-2.1	0.7
2018	3.2	-0.9	-	-1.7	-1.1	22.9	-2.7	2.3	1.9	-1.9	-1.5
2019	-1.4	0.1	-2.4	2.6	-9.4	-7.6	-2.9	-5.2	-1.3	1.8	1.9
2019											
Jan	0.8	2.1	0.5	4.4	1.2	-4.8	-0.6	-0.6	-0.8	2.9	3.3
Feb	2.5	2.1	0.4	4.1	-0.1	3.8	-3.1	-1.7	-0.5	3.4	3.3
Mar	3.0	1.8	-0.2	4.6	-0.9	8.6	-2.9	-1.6	0.2	2.8	3.2
Apr	2.8	1.8	-2.4	4.0	-1.9	7.1	-3.5	-1.9	-0.8	3.1	3.0
May	-0.1	1.1	-0.4	2.9	-4.1	-4.7	-3.7	-2.7	-2.0	2.3	3.0
Jun	-2.7	0.1	-1.9	2.6	-8.3	-13.4	-5.5	-5.5	-3.3	1.9	2.2
Jul	-2.5	-0.8	-3.2	1.5	-10.0	-9.1	-1.9	-7.4	-2.5	1.4	0.4
Aug	-2.3	0.6	-4.3	2.6	-13.0	-13.3	0.3	-6.9	-0.5	3.0	3.4
Sep	-3.5	-1.2	-3.3	1.9	-14.4	-11.8	-2.6	-8.1	-0.1	0.4	2.9
Oct	-6.4	-2.0	-4.5	1.5	-17.6	-22.2	-5.8	-9.1	-2.2	0.3	-
Nov	-5.7	-2.3	-4.3	-0.1	-20.5	-19.0	-4.7	-8.6	-1.8	-0.1	-1.1
Dec	-2.0	-1.6	-4.5	1.0	-20.9	-3.8	-0.7	-7.4	-1.5	0.6	-0.9
2020											
Jan	-1.5	-2.1	-4.9	1.0	-15.8	1.2	1.1	-5.7	-1.4	-0.9	-0.9

NOTATIONS

- nes not elsewhere specified
- nil or negligible

NOTES

The Import and Export Price Indices report contains statistics that are the most recent available at the time of its preparation.

Some statistics, particularly those for the most recent time periods, are provisional and may be subject to revision in later issues.