

IMPORT & EXPORT PRICE INDICES

July 2018

IMPORT AND EXPORT PRICE INDICES, July 2018
ISSN 2591-7463

© Department of Statistics, Ministry of Trade & Industry, Republic of Singapore

Reproducing or quoting any part of this publication is permitted, provided this publication is accredited as the source. Please refer to the Statistics Singapore Website Terms of Use (<http://www.singstat.gov.sg/terms-of-use>) for more details on the conditions of use of this publication.

Statistical activities conducted by the Singapore Department of Statistics are governed by the provisions of the Statistics Act (Cap. 317). The Act guarantees the confidentiality of information collected from individuals and companies. It spells out the legislative authority and responsibility of the Chief Statistician. The Act is available in the Department's Website (www.singstat.gov.sg).

IMPORT PRICE INDICES (2012 = 100)

July 2018

Import Price Index

Change over previous month

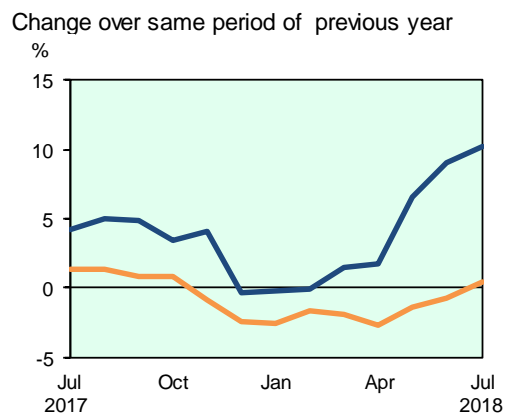
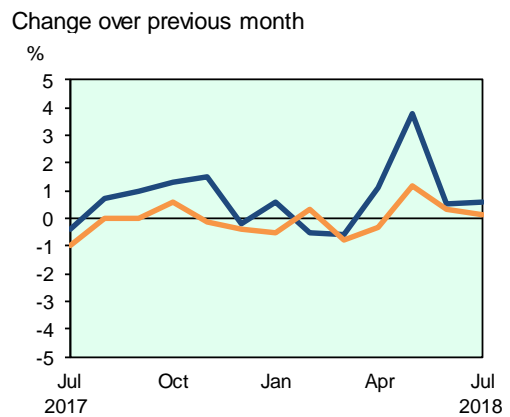
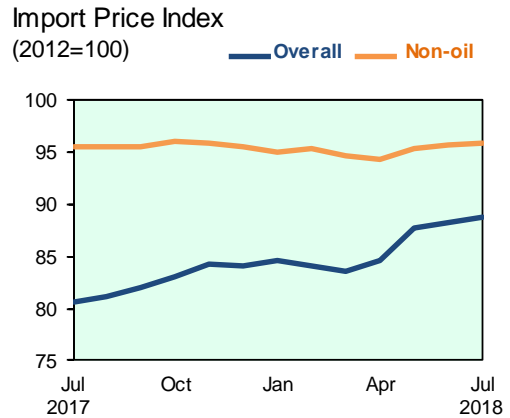
The Import Price Index rose 0.6 per cent in July 2018, following the 0.5 per cent increase in June 2018. The Oil index increased 1.8 per cent, higher than the 1.0 per cent increase in the previous month, attributed to higher prices of diesel fuel & fuel oil and crude petroleum. The Non-oil index rose 0.1 per cent in July 2018, after edging up 0.3 per cent in June.

Among the Non-oil sub-indices, increases were led by the Food & Live Animals (1.3 per cent) index due mainly to pricier eggs and dairy products and the Machinery & Transport Equipment (0.2 per cent) index. The increases were partially offset by declines in the Crude Materials (-1.4 per cent) and Chemicals & Chemical Products (-0.1 per cent) indices.

Change over same period of previous year

The Import Price Index rose 10.2 per cent in July 2018 from a year ago, following the 9.1 per cent increase in June 2018. The Oil and Non-oil indices climbed 47.3 per cent and 0.4 per cent respectively.

For the Non-oil sub-indices, higher prices of Chemicals & Chemical Products (7.0 per cent), Manufactured Goods (6.8 per cent), Crude Materials (1.8 per cent) and Beverages & Tobacco (0.8 per cent) were partially moderated by lower prices of Animal & Vegetable Oils (-9.4 per cent), Machinery & Transport Equipment (-1.2 per cent), Miscellaneous Manufactured Articles (-0.9 per cent) and Food & Live Animals (-0.6 per cent).



EXPORT PRICE INDICES (2012 = 100)

July 2018

Export Price Index

Change over previous month

The Export Price Index rose 0.6 per cent in July 2018, similar to the increase in June 2018. The Oil index rose 1.1 per cent, extending the 1.6 per cent increase in the previous month, due to higher prices of diesel fuel & fuel oil and bunker fuel. The Non-oil index rose 0.4 per cent in July 2018 and June 2018.

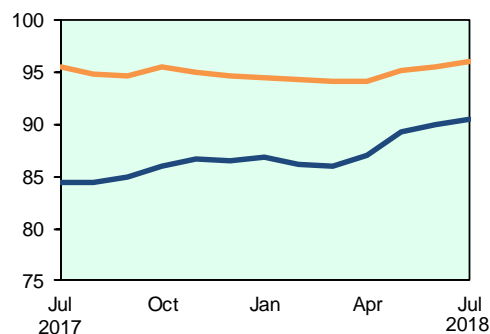
In July 2018, all Non-oil sub-indices increased, except for the Manufactured Goods (0.0 per cent) index. The increases were led by the Miscellaneous Manufactured Articles (0.9 per cent), Chemicals & Chemical Products (0.8 per cent) and Machinery & Transport Equipment (0.3 per cent) indices.

Change over same period of previous year

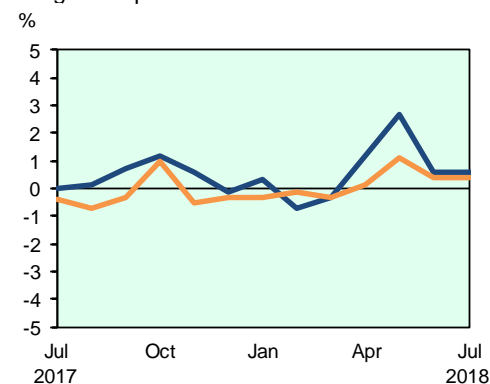
The Export Price Index increased 7.2 per cent in July 2018 over the previous year, following the 6,5 per cent increase in June 2018. The Oil and Non-oil indices climbed 41.4 per cent and 0.5 per cent respectively.

Among the Non-oil sub-indices, increases in the Chemicals & Chemical Products (5.4 per cent), Crude Materials (4.6 per cent), Manufactured Goods (3.2 per cent), Animal & Vegetable Oils (1.4 per cent) and Food & Live Animals (0.9 per cent) indices were partially moderated by declines in the Machinery & Transport Equipment (-0.9 per cent), Miscellaneous Manufactured Articles (-0.6 per cent) and Beverages & Tobacco (-0.5 per cent) indices.

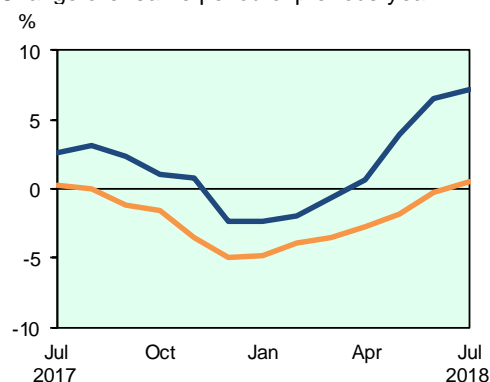
Export Price Index
(2012=100) — Overall — Non-oil



Change over previous month



Change over same period of previous year



TECHNICAL NOTE

The *Import Price Index (IPI)* is used primarily as an indicator to track the price trends of imported goods into Singapore. Prices of imports, valued at cif (cost, insurance and freight) are obtained monthly from major importers. The weighting pattern of the index is derived from import statistics for 2012.

The *Export Price Index (EPI)* measures changes in the price of all exports of merchandise from Singapore, including re-exports. In general, prices are obtained from major exporters of the selected commodities. Prices used in the index computation, are the prices of goods that physically leave Singapore's main ports of export; also termed as free on board prices. The weights of the index are derived from the distribution of export by commodity in 2012.

Index Formula

The 2012-based series is compiled using the Laspeyres formula where the price and weight reference periods are aligned to the year 2012. The geometric mean (GM) formula has been adopted in the computation of unweighted elementary aggregate price indices. The arithmetic mean (AM) formula is applied in compiling indices at higher levels of aggregation where weights of specific sub-indices are available

An Information Paper on the Rebasing of Import and Export Price Indices (2012=100) is available on the department's website at <https://www.singstat.gov.sg/ppi#Producer-and-International-Trade-Prices>.

Measurement of Changes in Price Indices

Change over previous month compares the index of the month with that of the preceding month. Such comparisons measure the change in the price index between two consecutive months. They serve as useful short-term indicators of the price movements. As the price indices are found not to be seasonal, it is not necessary for seasonal adjustment to be carried out.

Change over same period of previous year measures change in the index over a twelve-month period. Such comparisons compare the movement in the price index between similar months in two consecutive years.

Index Revision

The indices may be revised when late returns and amendments received from respondents are incorporated.

Dissemination of Data

The Import and Export Price Indices are available on the SingStat Website (www.singstat.gov.sg/tablebuilder). Excel tables for this month's report are available at <https://www.singstat.gov.sg/publications/economy/import-export-price-indices> or through the QR code below:



Table 1 Import Price Index

July 2018

Commodity section / division	Weights	Index (2012=100)			% Change		
					Jun 2018	Jul 2018	Jul 2018
		May 2018	Jun 2018	Jul 2018	May 2018	Jun 2018	Jul 2017
All Items	10,000	87.8	88.2	88.8	0.5	0.6	10.2
Non-oil Items	6,684	95.4	95.7	95.9	0.3	0.1	0.4
Food & Live Animals	215	98.2	98.6	99.8	0.4	1.3	-0.6
Live animals	9	94.5	91.6	96.2	-3.0	5.0	-6.3
Meat & meat preparations	26	98.6	101.0	101.1	2.4	0.2	-6.3
Dairy products & birds' eggs	28	91.3	90.9	94.3	-0.4	3.6	1.6
Fish seafood & preparations	28	112.6	111.1	111.2	-1.4	0.1	0.2
Cereals & cereal preparations	21	101.4	103.0	104.1	1.5	1.1	14.9
Vegetables & fruit	37	102.8	104.6	105.6	1.7	1.0	-3.1
Sugar, sugar preparations & honey	12	76.7	76.6	79.3	-0.2	3.6	-11.1
Coffee, tea, cocoa, spices & manufactures	28	91.6	91.3	91.2	-0.3	-0.1	-4.8
Animal feeding stuff (excl unmilled cereals)	3	108.4	108.1	110.3	-0.2	2.0	3.3
Miscellaneous food preparations	23	97.4	97.8	99.4	0.5	1.6	6.4
Beverages & Tobacco	86	104.3	105.2	105.7	0.8	0.5	0.8
Beverages	66	101.3	102.3	102.7	1.0	0.4	-0.7
Tobacco & manufactures	20	114.1	114.5	115.3	0.3	0.7	5.6
Crude Materials (excl fuels)	83	84.4	85.1	84.0	0.9	-1.4	1.8
Hides, skins & furskins raw	1	87.0	85.4	85.6	-1.8	0.2	-6.4
Oil seeds & oleaginous fruits	1	95.1	95.7	96.4	0.7	0.7	0.6
Crude rubber	17	58.7	59.6	60.8	1.6	1.9	1.5
Cork & wood	5	91.3	91.3	89.4	-	-2.1	-0.4
Textile fibres & their wastes	3	90.8	89.8	89.9	-1.0	0.1	-5.3
Crude fertilizers & minerals	26	79.6	80.0	80.3	0.6	0.4	0.7
Metalliferous ores & metal scrap	21	97.2	98.9	93.6	1.8	-5.4	3.7
Crude animal & vegetable materials nes	9	107.5	107.5	107.3	-	-0.2	4.0
Mineral Fuels, Lubricants & Related Materials	3,316	72.3	73.1	74.4	1.0	1.8	47.3
Petroleum & products & related materials	3,152	71.6	72.0	73.3	0.6	1.7	47.6
Gas	164	86.6	93.0	96.0	7.4	3.3	43.5
Animal & Vegetable Oils, Fats & Waxes	37	72.1	70.4	68.9	-2.3	-2.2	-9.4
Fixed vegetable fats & oils	36	71.7	70.0	68.4	-2.4	-2.3	-9.7
Animal & vegetable oils, fats & w axes nes	1	84.0	84.2	83.6	0.2	-0.7	-0.9
Chemicals & Chemical Products	694	93.9	95.0	94.9	1.2	-0.1	7.0
Organic chemicals	188	88.6	89.3	88.4	0.7	-1.0	13.1
Inorganic chemicals	34	103.2	103.0	97.4	-0.2	-5.5	12.9
Dyeing, tanning & colouring materials	28	87.6	88.6	89.6	1.1	1.2	2.0
Medicinal & pharmaceutical products	70	86.8	86.5	86.6	-0.4	0.2	4.7
Essential oils & perfume; toilet cleaning products	75	105.1	105.4	106.6	0.3	1.1	4.7
Plastics in primary forms	147	95.9	97.7	98.9	1.9	1.2	10.3
Plastics in non-primary forms	31	101.0	101.1	101.3	0.1	0.2	-0.1
Chemical materials & products nes	121	93.8	96.9	96.7	3.3	-0.2	-0.1
Manufactured Goods	635	95.6	96.1	96.4	0.5	0.3	6.8
Rubber manufactures nes	32	92.3	92.6	93.1	0.3	0.6	-0.1
Paper manufactures	50	106.6	107.3	108.8	0.6	1.4	7.4
Textile manufactures	31	100.1	100.1	100.6	-	0.5	-
Non-metal mineral manufactures nes	83	93.9	94.0	94.9	0.1	0.9	1.6
Iron & steel	179	94.3	94.4	95.8	0.1	1.6	11.5
Non-ferrous metals	116	94.3	95.9	91.6	1.6	-4.4	8.1
Manufactures of metals nes	144	95.4	95.7	97.4	0.3	1.8	6.5
Machinery & Transport Equipment	4,205	95.0	95.2	95.4	0.2	0.2	-1.2
Power-generating machinery & equipment	298	125.4	125.9	127.1	0.3	1.0	3.3
Machinery specialized for particular industries	352	93.1	93.8	94.0	0.8	0.2	0.7
Metal working machinery	31	95.0	95.1	95.3	0.1	0.2	-0.1
General industrial machinery	328	99.5	99.7	100.4	0.2	0.8	-0.5
Office machines & data-processing machines	495	99.0	99.4	100.0	0.4	0.7	-0.4
Telecommunication apparatus	422	68.6	68.2	68.4	-0.5	0.2	-3.6
Electrical machinery apparatus nes, electrical parts	2,116	94.1	94.3	94.1	0.2	-0.2	-2.5
Road vehicles	163	103.1	103.0	103.0	-0.2	-	1.9
Miscellaneous Manufactured Articles	729	99.7	99.6	99.6	-	-	-0.9
Prefab building, sanitary plumbing, lighting nes	16	102.3	102.2	101.5	-0.1	-0.6	0.3
Furniture, bedding, mattresses, cushions & others	25	102.1	102.1	102.1	0.1	-0.1	3.8
Travel goods, handbags & similar containers	25	115.4	115.4	116.0	-0.1	0.5	0.4
Articles of apparel & clothing accessories	64	106.6	106.3	106.9	-0.3	0.6	1.5
Footwear	16	105.0	105.3	105.4	0.3	0.1	0.7
Professional scientific & controlling instruments	207	110.6	110.7	111.7	0.2	0.8	0.1
Photographic & optical goods nes; watches & clocks	99	92.9	93.2	93.8	0.3	0.6	-1.5
Miscellaneous manufactured articles nes	277	90.2	90.0	89.0	-0.3	-1.2	-2.9

Table 2 Export Price Index

July 2018

Commodity section / division	Weights	Index (2012=100)			% Change		
		May 2018	Jun 2018	Jul 2018	Jun 2018	Jul 2018	Jul 2018
					May 2018	Jun 2018	Jul 2017
All Items	10,000	89.3	89.9	90.4	0.6	0.6	7.2
Non-oil Items	7,395	95.2	95.5	96.0	0.4	0.4	0.5
Food & Live Animals	124	96.9	97.0	98.1	0.1	1.2	0.9
Meat & meat preparations	2	102.2	102.2	102.2	-	-	-2.7
Dairy products & birds' eggs	7	76.7	76.7	77.4	-	1.0	-3.3
Fish seafood & preparations	9	103.8	103.9	107.3	0.1	3.3	3.2
Cereals & cereal preparations	7	112.4	112.5	113.0	0.1	0.4	2.7
Vegetables & fruit	8	129.7	132.2	125.9	1.9	-4.8	-8.7
Sugar, sugar preparations & honey	6	93.3	93.4	93.6	0.1	0.2	-3.0
Coffee, tea, cocoa, spices & manufactures	29	92.7	94.1	94.3	1.5	0.3	-4.0
Animal feeding stuff (excl unmilled cereals)	6	102.5	102.8	103.4	0.3	0.6	0.8
Miscellaneous food preparations	50	93.5	92.4	95.2	-1.1	2.9	6.8
Beverages & Tobacco	87	105.7	106.1	106.3	0.4	0.2	-0.5
Beverages	66	101.1	101.3	101.1	0.3	-0.2	-1.4
Tobacco & manufactures	21	120.3	121.2	122.6	0.7	1.1	1.9
Crude Materials (excl fuels)	60	80.6	80.5	80.9	-0.1	0.4	4.6
Crude rubber	15	51.1	49.7	48.1	-2.7	-3.2	-13.2
Cork & w ood	2	102.4	102.6	103.5	0.2	1.0	5.1
Pulp and w aste paper	6	107.8	108.3	115.3	0.5	6.4	-0.3
Textile fibres & their w astes	3	76.4	76.4	81.2	-	6.4	6.4
Metalliferous ores & metal scrap	29	85.5	86.1	85.3	0.7	-1.0	12.5
Crude animal & vegetable materials nes	5	97.5	96.8	99.1	-0.7	2.3	4.5
Mineral Fuels, Lubricants & Related Materials	2,605	72.7	73.9	74.7	1.6	1.1	41.4
Petroleum & products & related materials	2,595	72.8	74.0	74.8	1.6	1.1	41.4
Gas	10	59.3	59.9	64.5	1.0	7.8	47.1
Animal & Vegetable Oils, Fats & Waxes	8	86.2	85.6	88.1	-0.6	2.9	1.4
Animal oils & fats	1	96.7	96.7	94.7	-	-2.0	1.8
Fixed vegetable fats & oils	5	77.8	77.1	76.8	-1.0	-0.4	-3.0
Animal & vegetable oils, fats & w axes nes	2	106.2	106.2	116.4	-	9.6	9.6
Chemicals & Chemical Products	1,344	95.3	95.9	96.7	0.6	0.8	5.4
Organic chemicals	498	89.7	90.2	90.5	0.6	0.3	8.0
Inorganic chemicals	13	93.6	94.2	93.3	0.6	-0.9	1.7
Dyeing, tanning & colouring materials	32	96.0	96.2	96.9	0.2	0.8	7.7
Medicinal & pharmaceutical products	228	90.4	90.7	91.8	0.3	1.2	-1.3
Essential oils & perfume; toilet cleaning products	127	110.1	110.0	109.9	-0.1	-0.1	-1.3
Plastics in primary forms	289	100.1	101.2	102.6	1.1	1.4	15.0
Plastics in non-primary forms	29	95.3	96.9	97.8	1.7	0.9	1.6
Chemical materials & products nes	128	100.4	101.2	102.6	0.8	1.4	-3.2
Manufactured Goods	381	97.6	97.8	97.7	0.2	-	3.2
Rubber manufactures nes	26	100.9	101.2	101.9	0.3	0.7	0.7
Wood & cork manufactures (excl furniture)	2	120.3	120.7	121.5	0.3	0.7	9.3
Paper manufactures	40	98.9	99.8	101.7	1.0	1.9	1.7
Textile manufactures	20	99.1	97.0	97.4	-2.1	0.4	-1.2
Non-metal mineral manufactures nes	31	93.3	93.7	94.1	0.4	0.4	0.2
Iron & steel	96	86.0	86.2	88.4	0.2	2.5	7.6
Non-ferrous metals	76	109.7	109.7	104.2	-0.1	-5.0	5.6
Manufactures of metals nes	90	98.8	99.2	100.1	0.4	0.9	0.6
Machinery & Transport Equipment	4,595	94.1	94.4	94.7	0.3	0.3	-0.9
Pow er-generating machinery & equipment	188	108.0	108.4	107.6	0.3	-0.8	1.4
Machinery specialized for particular industries	397	93.9	93.3	94.1	-0.6	0.9	-
Metal w orking machinery	28	112.6	109.7	111.6	-2.6	1.7	2.7
General industrial machinery	243	102.0	102.6	102.7	0.6	0.1	-0.1
Office machines & data-processing machines	680	95.7	96.3	97.1	0.6	0.9	-2.6
Telecommunication apparatus	336	73.8	72.9	73.3	-1.3	0.6	-9.3
Electrical machinery apparatus nes, electrical parts	2,582	93.3	93.8	93.8	0.6	0.1	-
Road vehicles	141	114.5	115.6	116.0	1.0	0.3	-0.4
Miscellaneous Manufactured Articles	796	99.8	100.2	101.1	0.5	0.9	-0.6
Prefab building, sanitary plumbing, lighting nes	6	137.5	138.7	138.2	0.9	-0.4	14.4
Furniture, bedding, mattresses, cushions & others	5	108.8	109.0	112.3	0.2	3.0	4.1
Travel goods, handbags & similar containers	11	130.7	131.3	132.9	0.4	1.2	9.8
Articles of apparel & clothing accessories	33	102.9	103.0	103.8	0.1	0.8	0.5
Footw ear	8	101.4	101.7	101.9	0.3	0.2	-0.2
Professional scientific & controlling instruments	264	103.7	104.4	105.5	0.7	1.0	-1.5
Photographic & optical goods nes; w atches & clocks	86	94.0	94.1	93.4	0.1	-0.8	-1.4
Miscellaneous manufactured articles nes	383	96.4	96.8	98.0	0.4	1.2	-0.7

Table 3 Import Price Index

Section	All Items	Non-oil Items	Food & Live Animals	Beverages & Tobacco	Crude Materials	Mineral Fuels	Animal & Vegetable Oils, Fats & Waxes	Chemicals & Chemical Products	Manu-factured Goods	Machinery & Transport Equipment	Misc. Manu-factured Articles
Weights	10,000	6,684	215	86	83	3,316	37	694	635	4,205	729
Index (2012=100)											
2014	94.5	97.3	104.2	102.1	93.4	88.8	82.1	97.9	97.7	96.8	97.4
2015	82.5	97.7	101.5	104.7	88.0	52.0	70.1	92.0	94.2	98.7	100.5
2016	78.1	95.7	99.0	104.4	81.8	42.8	76.0	88.1	87.7	97.3	101.3
2017	82.7	96.3	100.6	105.1	84.0	55.4	78.8	90.8	91.6	97.0	101.2
2017											
Jul	80.6	95.5	100.4	104.8	82.5	50.5	76.0	88.7	90.2	96.5	100.5
Aug	81.1	95.5	100.5	105.6	83.0	52.2	75.4	89.2	91.5	96.2	100.6
Sep	82.0	95.5	101.0	105.4	83.7	54.7	77.5	89.9	91.9	95.9	100.7
Oct	83.0	96.0	100.5	104.8	83.8	56.7	77.2	91.2	93.1	96.5	100.8
Nov	84.2	95.9	100.7	104.6	83.7	60.6	75.8	91.0	92.9	96.4	100.5
Dec	84.0	95.6	100.8	104.5	83.3	60.8	72.7	91.7	92.7	96.0	99.6
2018											
Jan	84.6	95.1	99.5	103.8	83.4	63.3	74.0	91.0	92.7	95.4	99.4
Feb	84.1	95.4	99.4	103.9	83.6	61.4	73.7	92.0	93.2	95.7	99.3
Mar	83.6	94.6	97.2	103.8	83.7	61.4	72.7	92.2	93.2	94.6	99.1
Apr	84.5	94.3	97.2	103.9	83.9	64.8	72.3	92.7	93.9	93.9	99.3
May	87.8	95.4	98.2	104.3	84.4	72.3	72.1	93.9	95.6	95.0	99.7
Jun	88.2	95.7	98.6	105.2	85.1	73.1	70.4	95.0	96.1	95.2	99.6
Jul	88.8	95.9	99.8	105.7	84.0	74.4	68.9	94.9	96.4	95.4	99.6
Percentage Change over same period of previous year (%)											
2015	-12.6	0.4	-2.6	2.5	-5.8	-41.5	-14.6	-6.0	-3.6	2.0	3.2
2016	-5.3	-2.0	-2.5	-0.3	-7.1	-17.8	8.5	-4.3	-7.0	-1.4	0.8
2017	5.8	0.6	1.7	0.7	2.7	29.5	3.7	3.1	4.5	-0.3	-0.1
2017											
Jul	4.2	1.3	2.5	1.3	1.6	16.6	5.0	2.6	4.0	1.0	-0.6
Aug	5.0	1.4	2.6	2.1	3.1	20.7	-0.6	3.8	5.4	0.8	-0.6
Sep	4.9	0.8	2.2	1.7	4.4	22.6	-1.6	3.2	5.5	-0.1	-0.6
Oct	3.4	0.8	0.4	0.5	3.3	13.5	-0.4	3.0	5.8	-	-1.0
Nov	4.1	-0.9	-0.3	-0.3	0.4	24.3	-6.1	1.6	3.0	-1.7	-1.8
Dec	-0.4	-2.5	-1.4	-1.1	-2.4	6.9	-14.8	-0.2	1.4	-3.4	-2.7
2018											
Jan	-0.2	-2.6	-2.0	-1.9	-2.7	8.2	-14.7	-2.2	1.1	-3.1	-3.2
Feb	-0.1	-1.7	-1.6	-1.6	-3.2	5.4	-13.8	-0.2	1.6	-2.1	-2.8
Mar	1.5	-1.9	-3.2	-1.1	-1.5	13.7	-11.2	0.9	2.0	-2.7	-2.5
Apr	1.7	-2.7	-2.9	-1.0	-1.0	16.9	-8.5	1.8	3.4	-4.2	-2.7
May	6.6	-1.4	-2.1	-0.9	0.7	35.7	-10.3	3.7	5.5	-3.1	-1.7
Jun	9.1	-0.7	-1.8	0.1	3.0	47.5	-9.8	5.9	6.2	-2.4	-1.7
Jul	10.2	0.4	-0.6	0.8	1.8	47.3	-9.4	7.0	6.8	-1.2	-0.9

Table 4 Export Price Index

Section	All Items	Non-oil Items	Food & Live Animals	Beverages & Tobacco	Crude Materials	Mineral Fuels	Animal & Vegetable Oils, Fats & Waxes	Chemicals & Chemical Products	Manu- factured Goods	Machinery & Transport Equipment	Misc. Manu- factured Articles
Weights	10,000	7,395	124	87	60	2,605	8	1,344	381	4,595	796
Index (2012=100)											
2014	95.0	97.3	101.5	100.2	84.0	88.6	90.4	100.3	99.3	96.9	93.6
2015	88.5	99.8	103.6	107.2	74.8	56.3	84.6	97.5	96.3	101.2	97.8
2016	83.7	97.1	100.7	109.4	69.8	45.6	84.6	92.5	92.9	98.2	101.4
2017	86.1	96.2	98.6	107.5	80.2	57.3	89.0	93.3	95.4	96.1	102.0
2017											
Jul	84.4	95.5	97.2	106.8	77.3	52.9	86.9	91.7	94.7	95.5	101.8
Aug	84.4	94.9	96.9	106.7	78.9	54.9	85.9	91.5	95.4	94.6	101.3
Sep	85.0	94.6	96.8	105.9	79.7	57.9	85.8	91.8	95.9	94.1	101.0
Oct	86.1	95.5	98.0	105.9	79.2	59.3	87.0	93.1	96.2	95.1	101.3
Nov	86.6	95.0	98.6	105.7	78.5	62.7	87.1	93.0	95.7	94.5	101.1
Dec	86.5	94.7	98.2	105.2	78.8	63.4	86.6	93.8	95.3	93.9	100.2
2018											
Jan	86.8	94.4	99.1	104.9	79.4	65.2	85.8	94.4	96.2	93.3	99.5
Feb	86.2	94.4	98.0	105.4	79.8	63.1	85.5	94.6	96.7	93.2	99.1
Mar	86.0	94.1	97.6	105.3	79.4	62.8	85.6	94.0	95.9	93.0	99.2
Apr	87.0	94.2	96.7	104.0	79.5	66.7	85.6	94.1	96.8	93.1	99.2
May	89.3	95.2	96.9	105.7	80.6	72.7	86.2	95.3	97.6	94.1	99.8
Jun	89.9	95.5	97.0	106.1	80.5	73.9	85.6	95.9	97.8	94.4	100.2
Jul	90.4	96.0	98.1	106.3	80.9	74.7	88.1	96.7	97.7	94.7	101.1
Percentage Change over same period of previous year (%)											
2015	-6.9	2.6	2.1	7.0	-11.0	-36.4	-6.4	-2.8	-3.0	4.4	4.5
2016	-5.4	-2.7	-2.8	2.0	-6.7	-19.0	-	-5.2	-3.6	-3.0	3.6
2017	2.9	-0.9	-2.2	-1.7	14.9	25.7	5.2	0.9	2.7	-2.1	0.7
2017											
Jul	2.6	0.3	-1.4	-1.8	13.0	15.8	2.6	1.6	3.6	-0.4	0.9
Aug	3.2	-	-1.9	-1.8	14.2	22.2	2.2	1.4	4.0	-0.8	0.2
Sep	2.4	-1.2	-1.6	-2.6	14.9	23.7	0.4	0.9	4.2	-2.5	-0.4
Oct	1.1	-1.5	-2.2	-4.0	10.9	15.1	0.5	2.0	3.7	-3.1	-0.4
Nov	0.8	-3.5	-3.3	-4.6	5.9	25.0	-0.1	-0.2	0.4	-5.3	-1.3
Dec	-2.4	-5.0	-4.3	-5.9	-1.6	10.0	-3.2	-2.1	-1.3	-6.5	-2.9
2018											
Jan	-2.3	-4.8	-0.7	-5.0	-4.4	9.5	-6.6	-0.2	-	-6.6	-4.4
Feb	-2.0	-3.9	-1.6	-4.3	-4.5	7.1	-8.9	-0.4	1.4	-5.3	-4.2
Mar	-0.7	-3.5	-1.0	-3.2	-4.8	13.7	-8.4	-1.0	0.6	-4.7	-3.5
Apr	0.7	-2.8	-3.3	-4.2	-2.5	18.2	-7.0	0.1	1.8	-3.9	-3.5
May	3.9	-1.8	-2.8	-2.0	1.0	32.5	-4.0	1.9	2.6	-3.1	-2.7
Jun	6.5	-0.3	-2.4	-2.3	3.1	42.5	-2.4	3.8	4.0	-1.5	-1.8
Jul	7.2	0.5	0.9	-0.5	4.6	41.4	1.4	5.4	3.2	-0.9	-0.6

NOTATIONS

nes not elsewhere specified
- nil or negligible

NOTES

The Import and Export Price Indices report contains statistics that are the most recent available at the time of its preparation.

Some statistics, particularly those for the most recent time periods, are provisional and may be subject to revision in later issues.