



Import & Export Price Indices July 2025

www.singstat.gov.sg

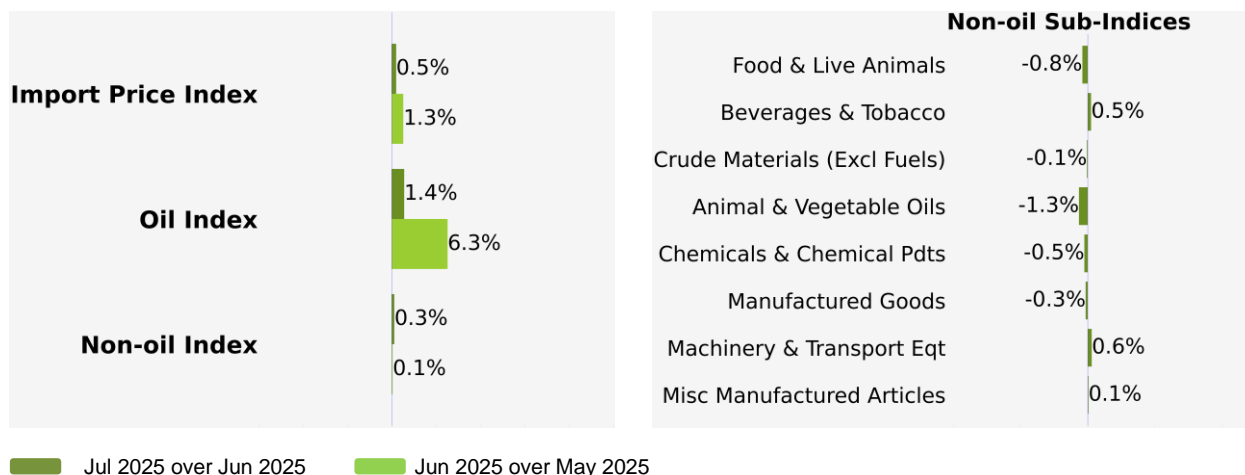
IMPORT AND EXPORT PRICE INDICES, July 2025
ISSN 2591-7463

© Department of Statistics, Ministry of Trade & Industry, Republic of Singapore

Reproducing or quoting any part of this publication is permitted, provided this publication is accredited as the source. Please refer to the SingStat Website Terms of Use (<http://www.singstat.gov.sg/terms-of-use>) for more details on the conditions of use of this publication.

Import Price Index (2023 = 100) July 2025

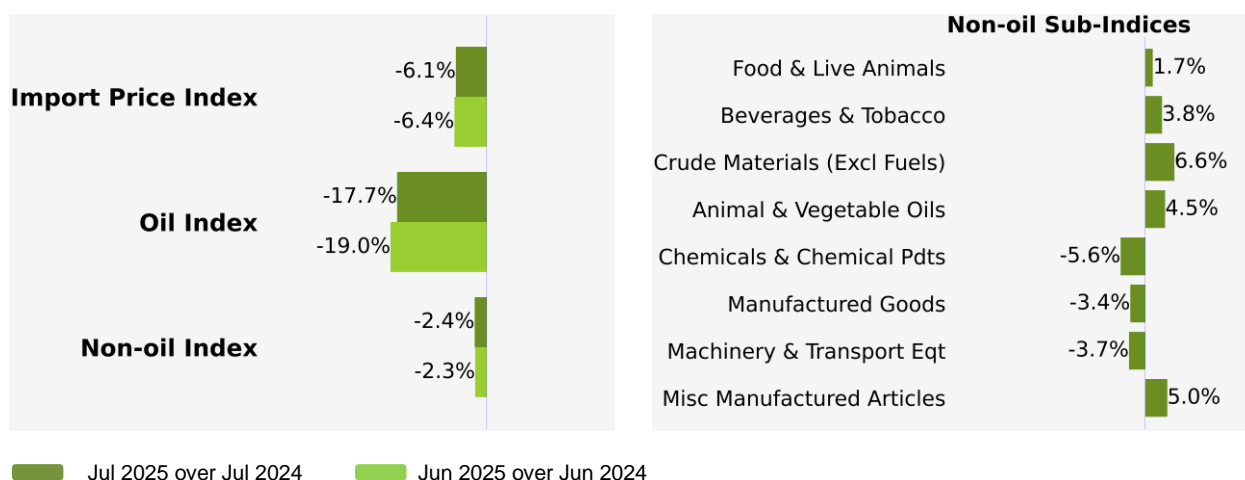
Month-on-Month Change



The Import Price Index rose 0.5% in July 2025, following the 1.3% increase in June 2025. The Oil index gained 1.4%, continuing the 6.3% increase in the previous month. The Non-oil index rose 0.3% in July 2025, after the 0.1% increase in June 2025.

The increase in the Non-oil index was due to the Machinery & Transport Equipment, Miscellaneous Manufactured Articles and Beverages & Tobacco indices. The increases were partially offset by decreases in the Chemicals & Chemical Products, Food & Live Animals, Manufactured Goods, Animal & Vegetable Oils and Crude Materials indices.

Year-on-Year Change



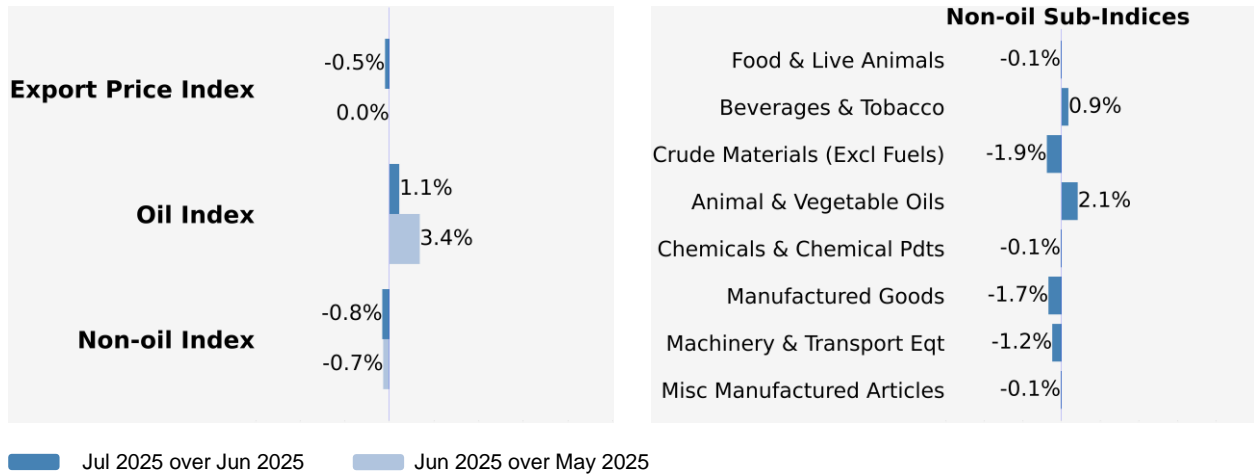
The Import Price Index fell 6.1% in July 2025 from a year ago, extending the 6.4% decrease in June 2025. The Oil index fell 17.7%, mainly due to lower prices of petroleum and products amid the oversupply of oil production¹, while the Non-oil indices fell 2.4%.

Among the Non-oil sub-indices, the decrease was due to the Machinery & Transport Equipment index, attributed to lower prices of electrical machinery apparatus, as well as the Chemicals & Chemical Products and Manufactured Goods indices. The decreases were partially moderated by increases in the Miscellaneous Manufactured Articles, Food & Live Animals, Beverages & Tobacco, Crude Materials and Animal & Vegetable Oils indices.

¹ Oil falls as Opec+ output hike raises glut concerns. (2025, July 7). The Straits Times.
<https://www.straitstimes.com/business/companies-markets/oil-tumbles-as-opec-output-hike-raises-glut-concerns>

Export Price Index (2023 = 100) July 2025

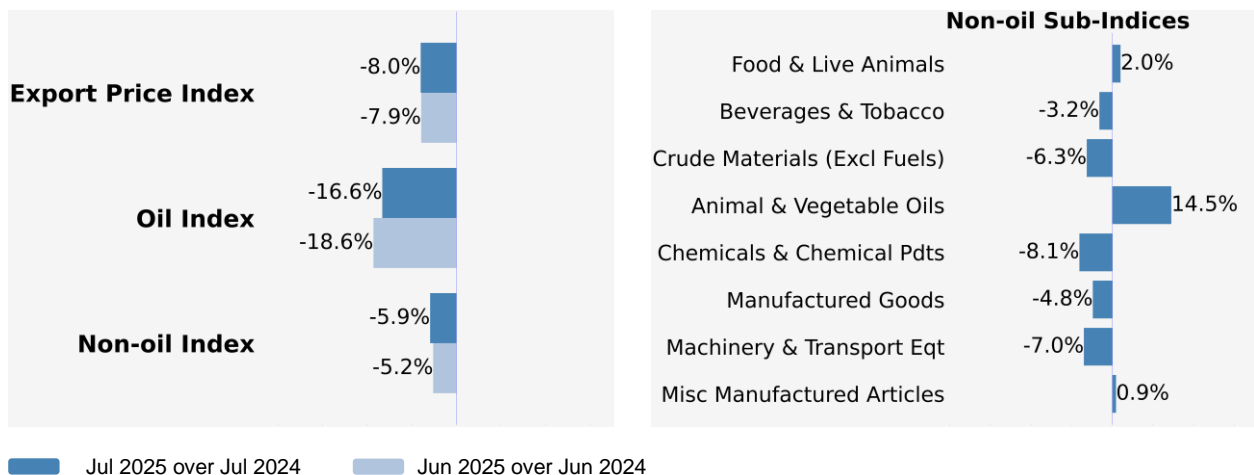
Month-on-Month Change



The Export Price Index fell 0.5% in July 2025, after being unchanged in June 2025. The Oil index gained 1.1%, continuing the 3.4% increase in the previous month. The Non-oil index fell 0.8% in July 2025, following the 0.7% decrease in June 2025.

The decrease in the Non-oil index was due to the Machinery & Transport Equipment index, attributed to lower prices of power-generating machinery & equipment, as well as the Manufactured Goods, Chemicals & Chemical Products, Crude Materials, Miscellaneous Manufactured Articles and Food & Live Animals indices. The decreases were partially offset by increases in the Beverages & Tobacco and Animal & Vegetable Oils indices.

Year-on-Year Change



The Export Price Index fell 8.0% in July 2025 from a year ago, following the 7.9% decrease in June 2025. The Oil and Non-oil indices decreased 16.6% and 5.9% respectively.

Among the Non-oil sub-indices, the decrease was due to the Machinery & Transport Equipment index, attributed to lower prices of electrical machinery apparatus, as well as the Chemicals & Chemical Products, Manufactured Goods, Crude Materials and Beverages & Tobacco indices. The decreases were partially moderated by increases in the Miscellaneous Manufactured Articles, Food & Live Animals and Animal & Vegetable Oils indices.

Technical Note

The **Import Price Index (IPI)** is used primarily as an indicator to track the price trends of imported goods into Singapore. Prices of imports, valued at CIF terms (cost, insurance and freight) are obtained monthly from major importers. The weighting pattern of the index is derived from import statistics for 2023.

The **Export Price Index (EPI)** measures changes in the price of all exports of merchandise from Singapore, including re-exports. In general, prices are obtained from major exporters of the selected commodities. Prices used in the index computation, are the prices of goods that physically leave Singapore's main ports of export; also termed as Free on Board (FOB) prices. The weights of the index are derived from the distribution of export by commodity in 2023.

Index Formula

The 2023-based series is compiled using the Laspeyres formula where the price and weight reference periods are aligned to the year 2023. The geometric mean formula has been adopted in the computation of unweighted elementary aggregate price indices. The arithmetic mean formula is applied in compiling indices at higher levels of aggregation where weights of specific sub-indices are available.

Measurement of Changes in Price Indices

Change over previous month compares the index of the month with that of the preceding month. Such comparisons measure the change in the price index between two consecutive months. They serve as useful short-term indicators of the price movements.

Change over same period of previous year measures change in the index over a twelve-month period. Such comparisons compare the movement in the price index between similar months in two consecutive years.

Linking the Old 2018-Based Price Index Series to the New 2023-Based Price Index Series

The IPI and EPI have been rebased from base year 2018 to base year 2023. To facilitate comparison of the historical price indices across base years, the old 2018-based series are linked to the new 2023-based series by re-scaling them via a Linked Coefficient. The Linked Coefficient is the ratio of the annual 2023-based index in 2023 to the annual 2018-based index in 2023.

Example: Linking the old Iron & Steel Index series for IPI prior to 2023, to the 2023-based Iron & Steel Index (2023=100)

1) Calculate the linked coefficient

Year	Iron & Steel Index (2018=100)	Iron & Steel Index (2023=100)	Linked Coefficient
2023	117.2	100.0	$100.0 \div 117.2 = 0.853$

2) Re-scaling the old series to the 2023-based series using the Linked Coefficient

Year	Month	Iron & Steel Index (2018=100)	Iron & Steel Index (2023=100)
2021	Dec	130.3	$130.3 \times 0.853 = 111.1$
2022	Jan	128.7	$128.7 \times 0.853 = 109.8$

Rescaling the 2023-Based Index Series to Previous Years

To continue the old index series going forward in time, re-scale the new 2023-based index series to the old base year level, via a Rescaling Coefficient. The Rescaling Coefficient is the ratio of the annual 2023-based index in 2023 to the annual 2023-based index in the old base year.

Example: Rescaling the new 2023-based Iron & Steel Index series for IPI to the 2018-based Iron & Steel Index (2018=100)

1) Calculate the rescaling coefficient

Base Year	Annual Iron & Steel Index in 2023	Annual Iron & Steel Index in 2018	Linked Coefficient
2023	100.0	85.3	$100.0 \div 85.3 = 1.172$

2) Re-scaling the new series to the 2018-based series using the Rescaling Coefficient

Year	Month	Iron & Steel Index (2023=100)	Iron & Steel Index (2018=100)
2024	Jan	95.6	$95.6 \times 1.172 = 112.0$
2024	Feb	95.3	$95.3 \times 1.172 = 111.7$

Index Revision

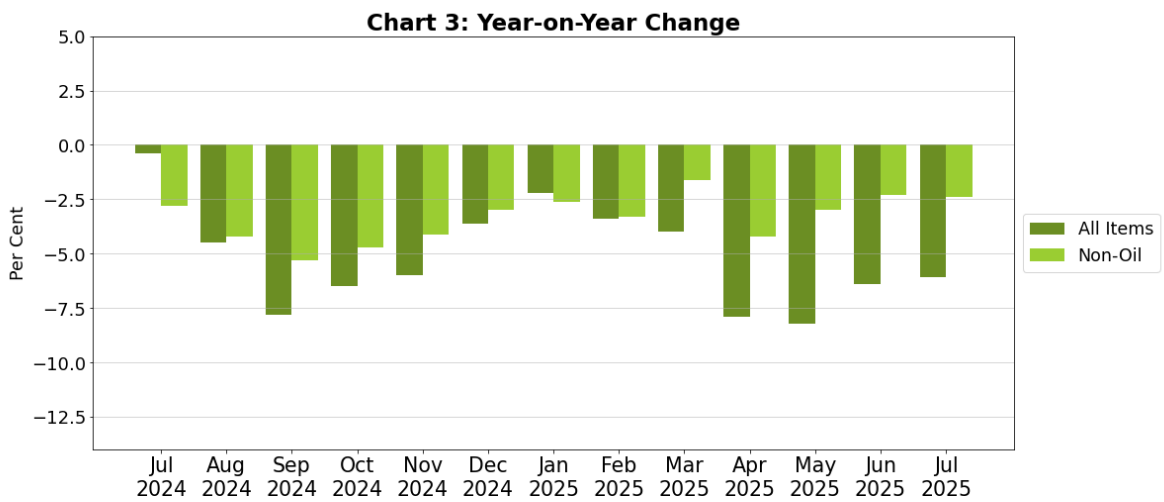
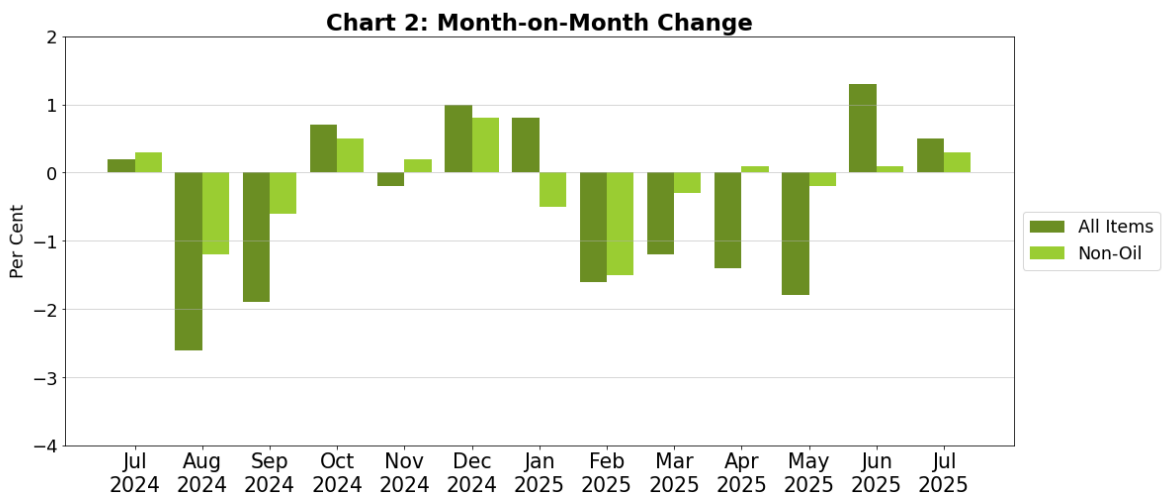
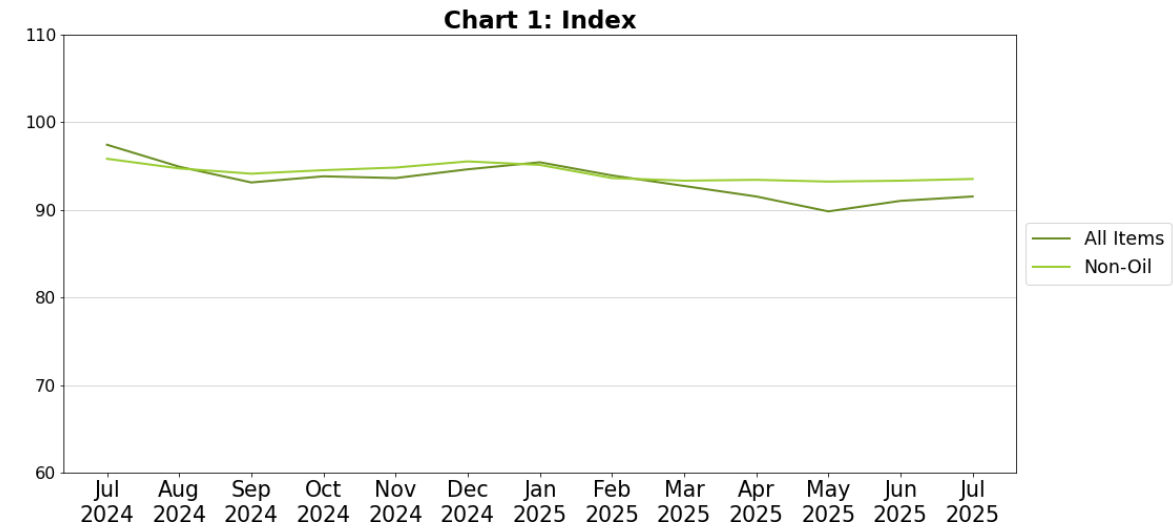
The indices may be revised when late returns and amendments received from respondents are incorporated.

Dissemination of Data

The Import and Export Price Indices are available on the SingStat Website (www.singstat.gov.sg/tablebuilder).

Import Price Index (2023 = 100)

July 2025



Export Price Index (2023 = 100) July 2025

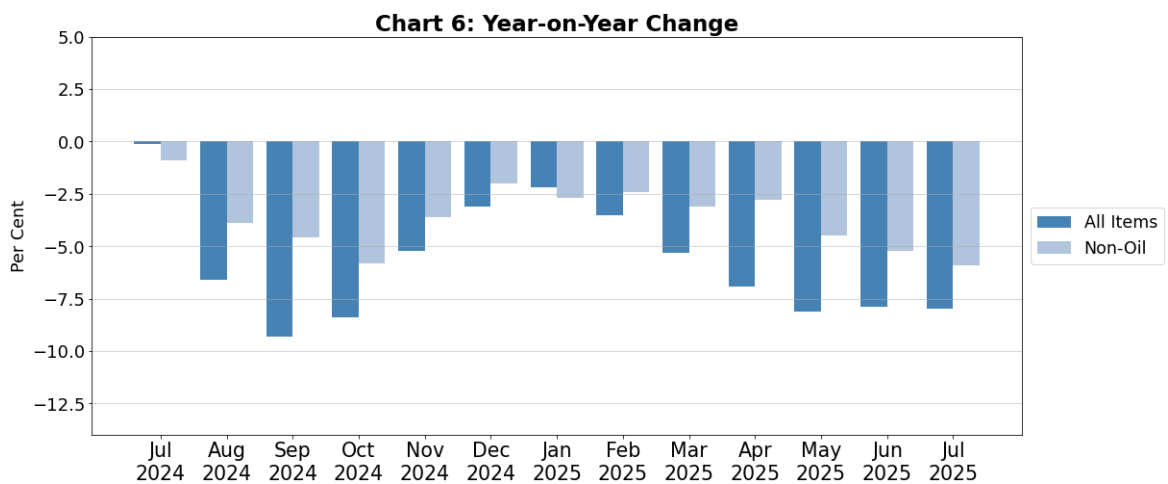
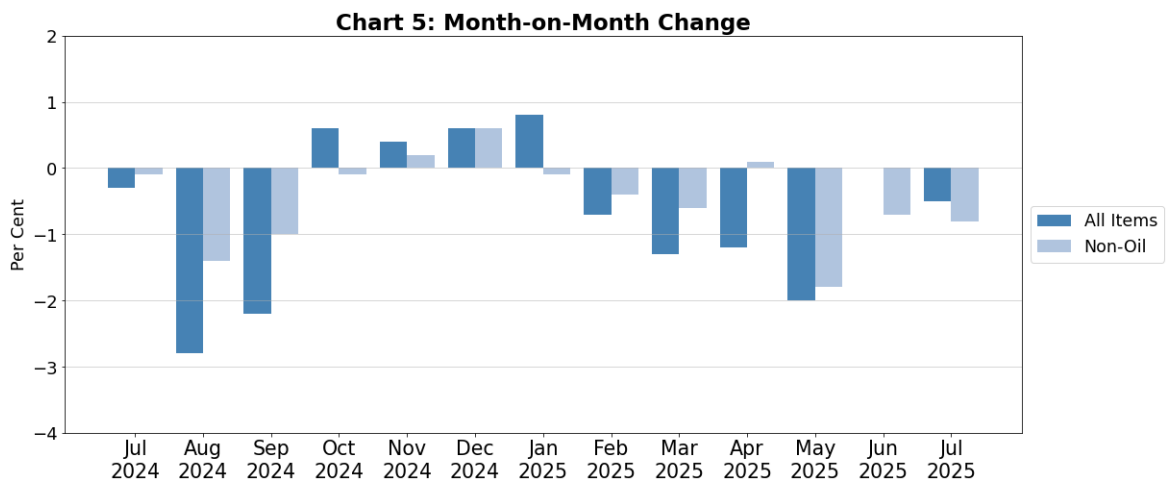
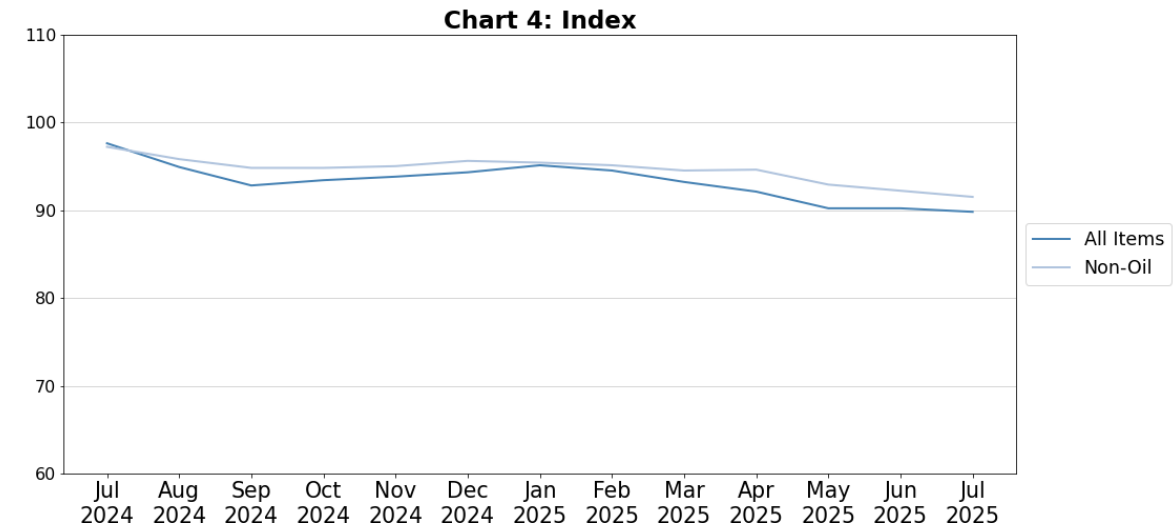


Table 1 Import Price Index

July 2025

Commodity section / division	Weights	Index (2023=100)			% Change		
		May 2025	Jun 2025	Jul 2025	Jun 2025	Jul 2025	Jul 2025
					May 2025	Jun 2025	Jul 2024
All Items	10,000	89.8	91.0	91.5	1.3	0.5	-6.1
Non-oil Items	7,703	93.2	93.3	93.5	0.1	0.3	-2.4
Food & Live Animals	254	107.9	106.1	105.2	-1.7	-0.8	1.7
Live animals	7	92.5	87.1	81.7	-5.9	-6.2	-1.3
Meat & meat preparations	35	104.0	104.5	104.6	0.6	-	1.5
Dairy products & birds' eggs	30	95.9	95.5	95.5	-0.4	-	-1.2
Fish seafood & preparations	31	99.1	99.2	98.0	0.2	-1.2	0.5
Cereals & cereal preparations	26	97.3	96.4	96.8	-0.9	0.4	-3.1
Vegetables & fruit	46	99.0	96.7	96.1	-2.3	-0.6	-3.8
Sugar, sugar preparations & honey	10	93.0	92.5	91.6	-0.6	-0.9	-12.9
Coffee, tea, cocoa, spices & manufactures	28	161.0	155.9	152.7	-3.2	-2.0	13.1
Animal feeding stuff (excl unmilled cereals)	6	102.0	101.3	100.4	-0.7	-0.8	-1.4
Miscellaneous food preparations	35	115.6	111.0	110.6	-4.0	-0.4	9.5
Beverages & Tobacco	110	101.0	101.4	101.9	0.4	0.5	3.8
Beverages	94	100.3	100.9	101.5	0.6	0.6	3.1
Tobacco & manufactures	16	105.1	104.8	104.7	-0.3	-0.1	8.3
Crude Materials (excl fuels)	58	97.9	99.9	99.7	2.0	-0.1	6.6
Hides Skins & Furskins	1	100.0	100.0	100.0	-	-	-
Oil seeds & oleaginous fruits	1	92.0	92.4	92.4	0.4	-	-4.2
Crude rubber	6	92.5	92.0	89.6	-0.6	-2.6	-8.0
Cork & wood	2	92.3	88.1	88.5	-4.5	0.4	-6.4
Textile Fibres	3	101.2	101.2	100.6	-	-0.5	-2.5
Crude fertilizers & minerals	20	111.2	110.9	107.4	-0.3	-3.1	10.4
Metalliferous ores & metal scrap	16	82.8	89.5	94.7	8.1	5.7	16.4
Crude animal & vegetable materials nes	9	100.2	102.8	102.1	2.6	-0.7	1.8
Mineral Fuels, Lubricants & Related Materials	2,297	78.6	83.6	84.7	6.3	1.4	-17.7
Petroleum & products & related materials	2,143	78.3	83.6	84.8	6.7	1.5	-17.8
Gas	155	83.0	84.0	83.7	1.2	-0.3	-16.0
Animal & Vegetable Oils, Fats & Waxes	70	92.3	91.3	90.1	-1.1	-1.3	4.5
Fixed vegetable fats & oils	15	100.0	96.1	96.9	-3.8	0.8	8.9
Inedible Mixtures Of Animal Or Vegetable Fats Or Oils	54	90.1	89.9	88.2	-0.2	-1.9	3.2
Chemicals & Chemical Products	874	94.0	93.3	92.8	-0.8	-0.5	-5.6
Organic chemicals	297	88.0	87.4	87.0	-0.6	-0.5	-10.2
Inorganic chemicals	36	98.2	98.5	97.6	0.3	-0.9	2.4
Dyeing, tanning & colouring materials	23	93.4	92.3	91.5	-1.1	-0.9	-4.1
Medicinal & pharmaceutical products	133	101.4	101.3	100.3	-0.1	-1.0	-3.3
Essential oils & perfume; toilet cleaning products	143	99.9	99.8	99.5	-0.1	-0.3	0.7
Plastics in primary forms	99	87.4	86.4	86.4	-1.1	-	-7.6
Plastics in non-primary forms	31	93.5	93.6	93.9	0.1	0.3	-3.6
Chemical materials & products nes	111	98.5	95.3	94.5	-3.2	-0.8	-6.0
Manufactured Goods	512	94.1	93.8	93.6	-0.3	-0.3	-3.4
Leather Manufactures & Dressed Furskins	1	106.3	105.1	105.1	-1.1	-	2.3
Rubber manufactures nes	22	94.0	93.9	94.0	-0.2	0.1	-5.5
Cork & Wood Manufactures	10	90.7	90.0	89.8	-0.8	-0.2	-2.1
Paper manufactures	36	92.7	92.1	91.8	-0.6	-0.3	-3.7
Textile manufactures	21	96.4	96.5	97.9	0.1	1.5	0.2
Non-metal mineral manufactures nes	70	97.6	97.2	96.5	-0.4	-0.8	-0.5
Iron & steel	113	88.1	86.7	86.6	-1.6	-0.1	-6.5
Non-ferrous metals	105	95.1	96.7	97.0	1.6	0.4	-1.2
Manufactures of metals nes	133	96.8	96.1	95.2	-0.7	-0.9	-4.2
Machinery & Transport Equipment	4,954	89.5	89.9	90.5	0.5	0.6	-3.7
Power-generating machinery & equipment	644	101.4	100.9	100.6	-0.5	-0.3	-1.6
Machinery specialized for particular industries	324	94.8	93.9	93.4	-0.9	-0.5	-3.5
Metal working machinery	15	92.2	98.8	98.4	7.1	-0.4	6.5
General industrial machinery	308	96.6	96.9	96.6	0.3	-0.3	-1.7
Office machines & data-processing machines	368	91.6	88.6	88.9	-3.2	0.3	-9.8
Telecommunication apparatus	412	96.7	97.9	98.4	1.3	0.5	-4.5
Electrical machinery apparatus nes, electrical parts	2,765	83.2	84.3	85.4	1.3	1.3	-3.9
Road vehicles	117	106.5	106.1	106.1	-0.4	-	4.9
Miscellaneous Manufactured Articles	872	107.4	107.1	107.2	-0.3	0.1	5.0
Prefab building, sanitary plumbing, lighting nes	12	89.8	89.2	90.5	-0.6	1.4	-7.0
Furniture, bedding, mattresses, cushions & others	26	101.5	101.7	103.5	0.2	1.8	5.4
Travel goods, handbags & similar containers	66	111.1	112.0	112.3	0.8	0.2	5.2
Articles of apparel & clothing accessories	63	89.4	89.5	89.8	0.1	0.3	-0.2
Footwear	25	104.9	99.6	102.2	-5.0	2.6	0.3
Professional scientific & controlling instruments	256	92.3	91.6	91.3	-0.8	-0.2	-4.2
Photographic & optical goods nes; watches & clocks	104	105.9	105.9	105.5	-	-0.4	1.5
Miscellaneous manufactured articles nes	319	124.1	124.0	124.1	-0.1	0.1	14.2

Figures may not sum to total due to rounding.

Table 2 Export Price Index

July 2025

Commodity section / division	Weights	Index (2023=100)			% Change		
		May 2025	Jun 2025	Jul 2025	Jun 2025	Jul 2025	Jul 2025
					May 2025	Jun 2025	Jul 2024
All Items	10,000	90.2	90.2	89.8	-	-0.5	-8.0
Non-oil Items	8,026	92.9	92.2	91.5	-0.7	-0.8	-5.9
Food & Live Animals	214	104.5	104.9	104.8	0.4	-0.1	2.0
Dairy products & birds' eggs	5	109.1	111.7	113.6	2.4	1.7	11.1
Fish seafood & preparations	6	98.6	98.7	99.1	0.2	0.4	-1.4
Cereals & cereal preparations	8	93.0	92.2	92.0	-0.9	-0.2	-3.7
Vegetables & fruit	5	116.0	120.6	125.9	4.0	4.4	22.3
Sugar, sugar preparations & honey	3	90.9	88.7	89.5	-2.4	0.9	-9.6
Coffee, tea, cocoa, spices & manufactures	25	146.7	150.3	147.5	2.5	-1.9	18.8
Animal feeding stuff (excl unmilled cereals)	7	95.5	94.4	89.5	-1.1	-5.2	-4.8
Miscellaneous food preparations	154	98.5	98.4	98.6	-0.1	0.2	-1.5
Beverages & Tobacco	90	97.6	96.6	97.5	-0.9	0.9	-3.2
Beverages	77	98.1	97.1	98.0	-1.0	1.0	-3.6
Tobacco & manufactures	14	94.4	93.9	94.4	-0.5	0.5	-0.7
Crude Materials (excl fuels)	62	94.0	94.4	92.6	0.4	-1.9	-6.3
Crude rubber	21	98.8	97.1	94.8	-1.7	-2.3	-8.6
Pulp and waste paper	9	104.7	102.7	101.6	-2.0	-1.0	-4.3
Metalliferous ores & metal scrap	30	86.0	88.7	86.9	3.1	-2.0	-6.4
Crude animal & vegetable materials nes	3	108.3	107.6	107.1	-0.6	-0.5	3.9
Mineral Fuels, Lubricants & Related Materials	1,974	79.3	82.0	82.9	3.4	1.1	-16.6
Petroleum & products & related materials	1,974	79.3	82.0	82.9	3.4	1.1	-16.6
Animal & Vegetable Oils, Fats & Waxes	5	116.1	113.9	116.3	-1.9	2.1	14.5
Fixed vegetable fats & oils	4	105.7	102.5	103.1	-3.0	0.6	-
Inedible Mixtures Of Animal Or Vegetable Fats Or Oils	2	136.6	136.4	142.2	-0.2	4.3	43.9
Chemicals & Chemical Products	1,297	87.3	86.3	86.2	-1.1	-0.1	-8.1
Organic chemicals	339	77.2	77.3	77.2	0.1	-0.2	-12.4
Inorganic chemicals	14	90.3	91.4	93.0	1.2	1.8	1.8
Dyeing, tanning & colouring materials	25	93.5	92.8	91.6	-0.8	-1.3	-8.1
Medicinal & pharmaceutical products	296	90.7	88.5	89.9	-2.4	1.5	-2.1
Essential oils & perfume; toilet cleaning products	233	89.9	90.1	89.6	0.2	-0.6	-9.2
Plastics in primary forms	232	91.6	89.6	88.3	-2.2	-1.4	-11.4
Plastics in non-primary forms	24	101.1	100.8	100.8	-0.3	-	-0.1
Chemical materials & products nes	133	89.2	87.9	87.2	-1.5	-0.8	-5.8
Manufactured Goods	277	95.4	95.5	93.9	0.2	-1.7	-4.8
Leather Manufactures & Dressed Furskins	3	95.3	93.8	92.6	-1.6	-1.3	-5.1
Rubber manufactures nes	20	101.1	100.6	99.5	-0.5	-1.1	-2.1
Paper manufactures	35	96.8	96.8	96.4	-	-0.5	-3.5
Textile manufactures	14	96.7	96.5	91.1	-0.2	-5.6	-11.2
Non-metal mineral manufactures nes	18	97.0	99.6	95.5	2.6	-4.1	-5.9
Iron & steel	56	77.0	77.5	75.7	0.7	-2.4	-10.4
Non-ferrous metals	59	109.3	110.2	109.6	0.8	-0.5	2.7
Manufactures of metals nes	73	95.2	94.2	92.4	-1.0	-2.0	-7.5
Machinery & Transport Equipment	5,185	92.0	91.2	90.2	-0.9	-1.2	-7.0
Power-generating machinery & equipment	461	106.3	104.3	97.0	-1.9	-7.0	-4.7
Machinery specialized for particular industries	650	109.2	108.2	109.4	-0.9	1.1	-2.2
Metal working machinery	17	100.5	99.9	99.2	-0.6	-0.7	-1.2
General industrial machinery	207	89.2	87.6	87.6	-1.8	-	-11.5
Office machines & data-processing machines	343	92.1	92.1	91.4	-	-0.7	-2.7
Telecommunication apparatus	426	84.6	82.4	81.4	-2.6	-1.2	-11.5
Electrical machinery apparatus nes, electrical parts	3,007	87.0	86.6	85.9	-0.5	-0.8	-8.5
Road vehicles	73	104.5	104.1	102.4	-0.4	-1.6	1.4
Miscellaneous Manufactured Articles	895	102.2	101.8	101.7	-0.4	-0.1	0.9
Prefab building, sanitary plumbing, lighting nes	3	78.6	77.8	80.3	-0.9	3.2	-18.1
Furniture, bedding, mattresses, cushions & others	6	104.1	104.1	104.1	-	-	-
Travel goods, handbags & similar containers	41	101.9	100.1	101.4	-1.8	1.3	-0.2
Articles of apparel & clothing accessories	32	101.5	103.8	99.9	2.3	-3.8	8.1
Footwear	18	88.5	85.6	83.5	-3.3	-2.4	-11.6
Professional scientific & controlling instruments	400	94.8	92.9	93.3	-2.1	0.5	-5.5
Photographic & optical goods nes; watches & clocks	85	102.6	102.5	102.6	-0.1	0.1	-0.9
Miscellaneous manufactured articles nes	310	112.6	114.3	113.8	1.5	-0.5	9.6

Figures may not sum to total due to rounding.

Table 3 Import Price Index

Section	All Items	Non-oil Items	Food & Live Animals	Beverages & Tobacco	Crude Materials	Mineral Fuels	Animal & Vegetable Oils, Fats & Waxes	Chemicals & Chemical Products	Manu- factured Goods	Machinery & Transport Equipment	Misc. Manu- factured Articles
Weights	10,000	7,703	254	110	58	2,297	70	874	512	4,954	872
Index (2023=100)											
2021	92.6	95.3	91.8	87.2	92.3	85.7	108.2	97.0	97.2	94.9	96.9
2022	105.9	100.6	99.7	89.5	97.9	119.5	126.4	103.1	104.6	100.1	99.3
2023	100.0	100.0	100.0	100.0	100.0	100.0	100.0	100.0	100.0	100.0	100.0
2024	96.1	95.6	103.0	97.3	95.7	97.6	92.3	97.5	96.1	93.9	101.5
2024											
Jul	97.4	95.8	103.4	98.2	93.6	102.9	86.2	98.3	96.8	93.9	102.0
Aug	94.9	94.7	103.6	97.0	97.5	95.8	85.9	96.7	95.2	92.6	101.6
Sep	93.1	94.1	103.3	96.6	93.3	90.0	89.6	95.6	94.3	92.0	101.6
Oct	93.8	94.5	104.1	96.6	95.4	91.3	92.5	95.8	94.4	92.4	102.5
Nov	93.6	94.8	104.9	96.3	94.0	89.8	87.2	96.6	95.2	92.5	103.1
Dec	94.6	95.5	106.1	95.6	93.1	91.4	92.5	97.0	95.8	93.3	103.8
2025											
Jan	95.4	95.1	107.8	99.3	95.4	96.4	94.1	97.2	96.1	92.1	104.7
Feb	93.9	93.6	108.2	99.0	92.4	94.8	91.4	95.9	95.9	90.0	105.6
Mar	92.7	93.3	110.0	100.5	98.1	90.9	91.3	95.9	95.6	89.3	106.2
Apr	91.5	93.4	109.5	101.9	97.8	85.1	92.4	95.4	95.3	89.3	107.5
May	89.8	93.2	107.9	101.0	97.9	78.6	92.3	94.0	94.1	89.5	107.4
Jun	91.0	93.3	106.1	101.4	99.9	83.6	91.3	93.3	93.8	89.9	107.1
Jul	91.5	93.5	105.2	101.9	99.7	84.7	90.1	92.8	93.6	90.5	107.2
Percentage Change over same period of previous year (%)											
2022	14.4	5.5	8.7	2.7	6.0	39.5	16.9	6.4	7.5	5.5	2.5
2023	-5.6	-0.6	0.3	11.7	2.1	-16.3	-20.9	-3.0	-4.4	-0.1	0.7
2024	-3.9	-4.4	3.0	-2.7	-4.3	-2.4	-7.7	-2.5	-3.9	-6.1	1.5
2024											
Jul	-0.4	-2.8	3.3	-3.1	-4.3	8.1	-13.8	-	-2.7	-4.4	1.9
Aug	-4.5	-4.2	2.6	-4.3	-0.2	-5.5	-15.6	-2.3	-3.6	-6.0	2.2
Sep	-7.8	-5.3	2.6	-4.3	-2.1	-15.5	-10.8	-4.7	-4.1	-7.2	1.9
Oct	-6.5	-4.7	3.9	-4.0	-0.6	-12.5	-7.3	-4.6	-4.0	-6.6	3.2
Nov	-6.0	-4.1	5.9	-4.3	-6.1	-12.4	-12.5	-2.3	-2.7	-6.3	4.2
Dec	-3.6	-3.0	6.3	-4.8	-5.6	-5.7	-6.0	-0.9	-2.1	-5.2	5.0
2025											
Jan	-2.2	-2.6	6.3	1.8	-1.4	-0.7	-4.8	-0.8	-1.0	-5.2	5.8
Feb	-3.4	-3.3	6.8	1.3	-5.4	-3.7	-6.1	-2.1	-0.7	-6.1	6.3
Mar	-4.0	-1.6	9.0	2.8	0.1	-11.3	6.4	-1.6	-0.5	-4.0	6.2
Apr	-7.9	-4.2	7.4	4.2	2.5	-19.2	-2.8	-3.2	-1.8	-7.4	5.7
May	-8.2	-3.0	5.2	2.9	-0.8	-24.4	-6.3	-4.6	-3.2	-4.9	5.5
Jun	-6.4	-2.3	3.3	3.2	4.6	-19.0	-7.4	-5.8	-3.6	-3.5	5.6
Jul	-6.1	-2.4	1.7	3.8	6.6	-17.7	4.5	-5.6	-3.4	-3.7	5.0

Table 4 Export Price Index

Section	All Items	Non-oil Items	Food & Live Animals	Beverages & Tobacco	Crude Materials	Mineral Fuels	Animal & Vegetable Oils, Fats & Waxes	Chemicals & Chemical Products	Manu- factured Goods	Machinery & Transport Equipment	Misc. Manu- factured Articles
Weights	10,000	8,026	214	90	62	1,974	5	1,297	277	5,185	895
Index (2023=100)											
2021	93.3	97.3	100.7	91.2	103.7	79.4	93.5	99.7	94.7	96.0	101.4
2022	108.2	105.0	102.9	95.0	113.6	119.3	114.8	108.6	103.5	104.4	103.5
2023	100.0	100.0	100.0	100.0	100.0	100.0	100.0	100.0	100.0	100.0	100.0
2024	96.3	96.5	101.8	99.3	98.2	95.4	101.2	92.7	96.6	96.4	100.7
2024											
Jul	97.6	97.2	102.7	100.7	98.8	99.4	101.6	93.9	98.6	97.0	100.8
Aug	94.9	95.8	101.8	98.0	100.5	91.3	100.5	91.7	96.6	95.7	99.7
Sep	92.8	94.8	101.3	97.6	96.4	84.4	100.0	90.6	95.5	94.5	100.7
Oct	93.4	94.8	103.1	100.3	95.5	87.5	97.3	89.6	96.2	94.5	101.2
Nov	93.8	95.0	104.6	98.2	93.3	88.7	102.0	89.2	97.1	94.7	102.2
Dec	94.3	95.6	104.7	94.1	93.7	89.4	106.1	90.0	97.4	95.2	103.3
2025											
Jan	95.1	95.4	105.3	100.6	95.6	93.8	118.1	90.1	96.9	94.9	102.7
Feb	94.5	95.1	106.1	101.6	93.8	92.1	112.0	90.1	97.4	94.3	102.7
Mar	93.2	94.5	106.8	101.4	94.3	87.9	117.4	89.2	97.8	93.6	103.1
Apr	92.1	94.6	105.6	98.3	95.6	81.7	118.3	89.5	96.9	93.8	102.9
May	90.2	92.9	104.5	97.6	94.0	79.3	116.1	87.3	95.4	92.0	102.2
Jun	90.2	92.2	104.9	96.6	94.4	82.0	113.9	86.3	95.5	91.2	101.8
Jul	89.8	91.5	104.8	97.5	92.6	82.9	116.3	86.2	93.9	90.2	101.7
Percentage Change over same period of previous year (%)											
2022	15.9	7.8	2.1	4.2	9.6	50.3	22.8	8.9	9.3	8.7	2.1
2023	-7.6	-4.7	-2.8	5.3	-12.0	-16.2	-12.9	-7.9	-3.4	-4.2	-3.4
2024	-3.7	-3.5	1.8	-0.7	-1.8	-4.6	1.2	-7.3	-3.4	-3.6	0.7
2024											
Jul	-0.1	-0.9	2.9	0.7	3.4	3.3	8.9	-4.6	-2.2	-0.7	2.2
Aug	-6.6	-3.9	0.9	-1.7	4.3	-16.4	3.7	-7.8	-4.2	-4.1	1.0
Sep	-9.3	-4.6	-	-1.2	-0.2	-26.1	-3.7	-9.8	-4.4	-4.6	1.7
Oct	-8.4	-5.8	2.5	1.0	-1.7	-18.4	-5.2	-10.7	-2.5	-6.5	1.4
Nov	-5.2	-3.6	3.5	0.3	-6.7	-11.7	-0.4	-9.6	-0.9	-3.9	4.5
Dec	-3.1	-2.0	5.6	-4.0	-6.1	-7.7	4.6	-7.3	-0.3	-2.0	3.9
2025											
Jan	-2.2	-2.7	5.4	-1.8	-3.0	-0.4	17.5	-6.2	1.3	-3.3	2.5
Feb	-3.5	-2.4	6.2	0.5	-5.5	-7.8	10.0	-4.2	1.4	-3.5	2.6
Mar	-5.3	-3.1	6.3	3.4	-5.1	-13.7	16.0	-5.5	2.4	-4.5	3.7
Apr	-6.9	-2.8	5.1	-3.0	-2.9	-22.2	16.0	-5.1	0.5	-3.7	2.5
May	-8.1	-4.5	3.1	-3.6	-8.8	-22.1	15.0	-7.8	-1.5	-5.3	2.0
Jun	-7.9	-5.2	3.3	-2.0	-7.4	-18.6	13.4	-8.0	-2.0	-6.3	1.4
Jul	-8.0	-5.9	2.0	-3.2	-6.3	-16.6	14.5	-8.1	-4.8	-7.0	0.9

NOTATIONS

- nes not elsewhere specified
- nil or negligible

NOTES

The Import and Export Price Indices report contains statistics that are the most recent available at the time of its preparation.

Some statistics, particularly those for the most recent time periods, are provisional and may be subject to revision in later issues.



[Latest Data using the SingStat Table Builder](#)



[Our Publications and Methodology](#)



[Visualising Data: Dashboards, Infographics](#)



[Video: What is the Producer Price Index \(PPI\)?](#)



[Import & Export Price Indices Report](#)



[More Info Related to PPI](#)



Singapore Department of Statistics
29 Aug 2025

Find us on:



SINGAPORE DEPARTMENT OF STATISTICS COMMUNICATIONS & INFORMATION SERVICES

The Singapore Department of Statistics (DOS) offers official statistics, data insights, visualisations, and statistical resources through user-friendly platforms.



SingStat Website

Visit this convenient gateway to access latest data and statistical information.

Data across the six major themes of Economy & Prices, Industry, Trade & Investment, Population, Households, and Society covering some 200 topics such as Gross Domestic Product, Consumer Price Index, Retail Sales and Food & Beverage Services Indices, Producer Price Indices, Business Expectations, Business Receipts Index, Trade in Services, Direct Investment, Population Indicators, Household Income, Household Expenditure, Deaths and Life Expectancy, Births and Fertility, Marriages and Divorces, and more.

Publications

- **Statistics Singapore Newsletter** - features articles on latest key statistical activities, recent survey findings, and methodological improvements.
- **Information Papers** - highlight conceptual and methodological changes and improvements in official statistics.
- **Occasional Papers** - present statistical trends and observations on important social and economic issues to stimulate discussion and research.
- **eBook of Statistics** - consolidates latest information and resources on key economic and socio-demographic domains.
- **Singapore in Figures** - allows exploration of key economic and socio-demographic statistics through interactive dashboards.

Visualisations such as infographics and interactive dashboards with latest data, and videos to explain data and statistical concepts.

Businesses Insights Tool for Enterprises (BITE) serves businesses with bite-sized data for big decisions, giving firms insights on their customers, industries, and business performance.

Advance Release Calendar with dates of upcoming data and publication releases in the next six months.



SingStat Table Builder

Access over 2,400 data tables for free across various economic and socio-demographic domains from 70 public sector agencies. Watch the [video](#) to find out how you can easily access and customise data tables.



SingStat Express

Subscribe to receive alerts on the latest press releases, occasional/ information papers, and newsletters.



SingStat Mobile App

Download the app for fast and convenient access to commonly used statistics from your mobile devices.

Over 300 charts are available across over 40 data categories for easy access to visualise data trends.



For statistical enquiries, you may reach us at:

✉ email: info@singstat.gov.sg or submit the [Data Request Form](#)

☎ phone: 1800-323 8118* (Local users) or (65) 6332 7738 (Overseas users)

* Calls from mobile telephone lines to 1800 local toll-free number may be subject to mobile airtime charges as imposed by the relevant mobile service provider.

Find us on social media!



@SingStat



@singstat_dos



@SingStatvideo



@sg-department-of-statistics

DEPARTMENT OF
STATISTICS
SINGAPORE

—Empowering You with Trusted Data—