



Import & Export Price Indices June 2020

IMPORT AND EXPORT PRICE INDICES, June 2020
ISSN 2591-7463

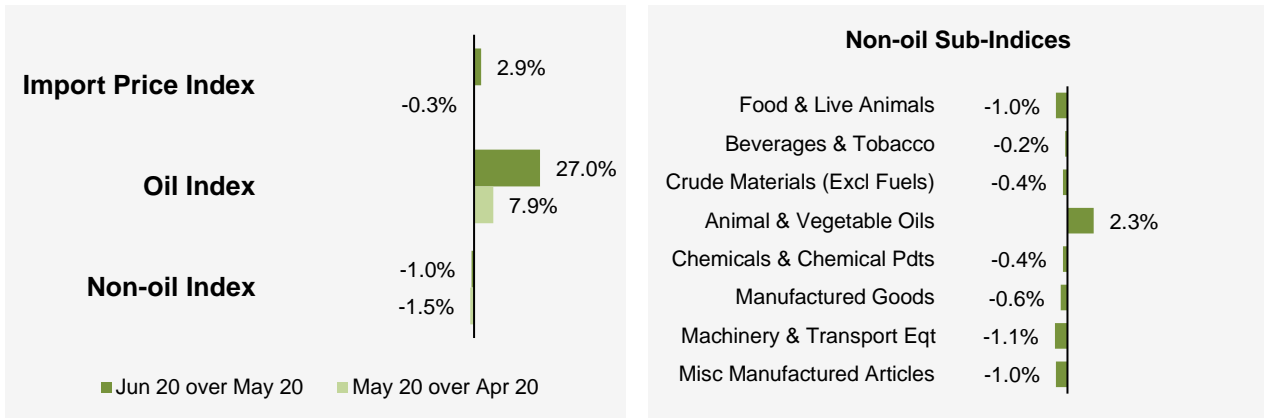
© Department of Statistics, Ministry of Trade & Industry, Republic of Singapore

Reproducing or quoting any part of this publication is permitted, provided this publication is accredited as the source. Please refer to the Statistics Singapore Website Terms of Use (<http://www.singstat.gov.sg/terms-of-use>) for more details on the conditions of use of this publication.

Statistical activities conducted by the Singapore Department of Statistics are governed by the provisions of the Statistics Act (Cap. 317). The Act guarantees the confidentiality of information collected from individuals and companies. It spells out the legislative authority and responsibility of the Chief Statistician. The Act is available in the Department's Website (www.singstat.gov.sg).

Import Price Index (2018 = 100) June 2020

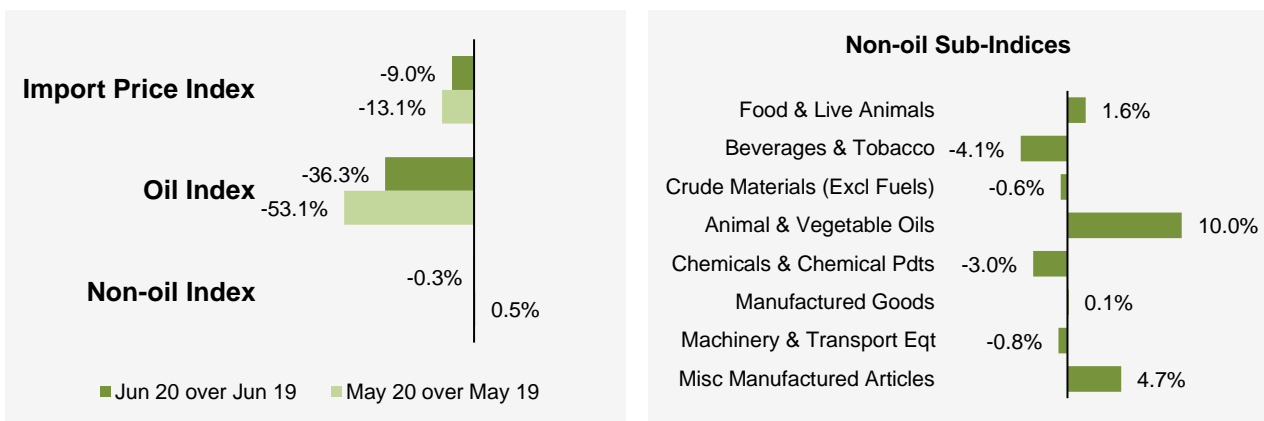
Month-on-Month Change



The Import Price Index rose 2.9% in June 2020, in contrast to the 0.3% decrease in May 2020. The Oil index rose 27.0%, extending the 7.9% increase in the previous month. The Non-oil index fell 1.0%, following the 1.5% decrease in May 2020.

All Non-oil sub-indices were lower except for the Animal & Vegetable Oils index which rose 2.3%. The declines were led by the Machinery & Transport Equipment (-1.1%) and Miscellaneous Manufactured Articles (-1.0%) indices, due mainly to lower prices of memory chips and professional instruments respectively.

Year-on-Year Change

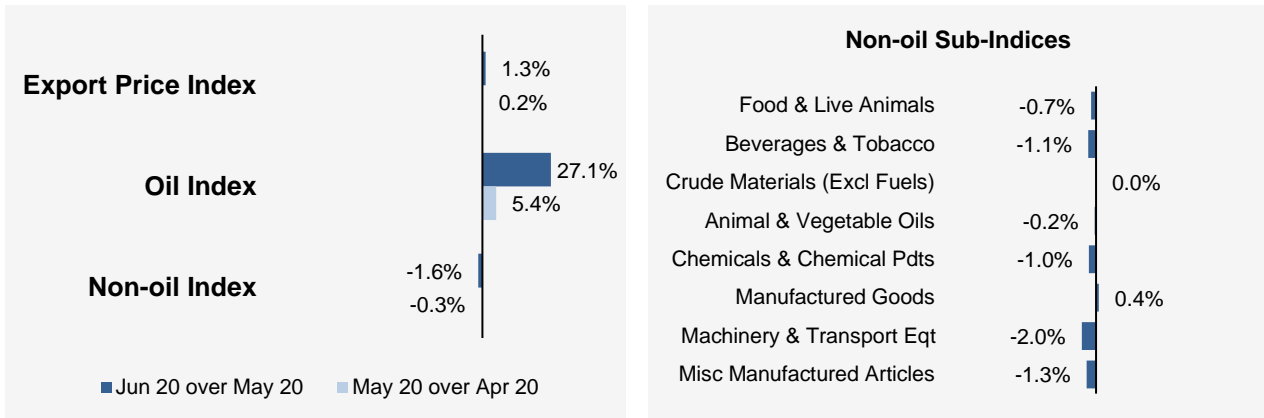


The Import Price Index fell 9.0% in June 2020 from a year ago, extending the 13.1% decline in May 2020. The Oil and Non-oil indices fell 36.3% and 0.3% respectively.

For the Non-oil sub-indices, lower prices of Beverages & Tobacco (-4.1%), Chemicals & Chemical Products (-3.0%), Machinery & Transport Equipment (-0.8%), and Crude Materials (-0.6%) were partially moderated by higher prices of Animal & Vegetable Oils (10.0%), Miscellaneous Manufactured Articles (4.7%), Food & Live Animals (1.6%) and Manufactured Goods (0.1%).

Export Price Index (2018 = 100) June 2020

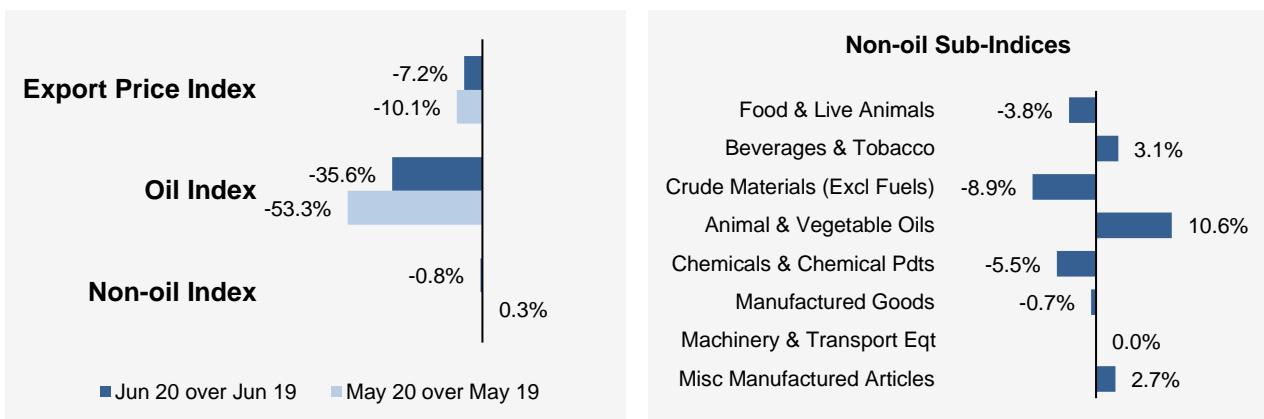
Month-on-Month Change



The Export Price Index increased 1.3% in June 2020, extending the 0.2% increase in May 2020. The Oil index rose 27.1%, following the 5.4% increase in the previous month. The Non-oil index fell 1.6%, after the 0.3% decline in May 2020.

For the Non-oil sub-indices, decreases led by the Machinery & Transport Equipment (-2.0%) and Chemicals & Chemical Products (-1.0%) indices, due mainly to lower prices of integrated circuits and polyethylene products respectively, were partially offset by the increase in the Manufactured Goods (0.4%) index.

Year-on-Year Change



The Export Price Index fell 7.2% in June 2020 from a year ago, following the 10.1% decrease in May 2020. The Oil and Non-oil indices declined 35.6% and 0.8% respectively.

For the Non-oil sub-indices, lower prices of Crude Materials (-8.9%), Chemicals & Chemical Products (-5.5%), Food & Live Animals (-3.8%) and Manufactured Goods (-0.7%) were partially moderated by higher prices of Animal & Vegetable Oils (10.6%), Beverages & Tobacco (3.1%) and Miscellaneous Manufactured Articles (2.7%).

Technical Note

The **Import Price Index (IPI)** is used primarily as an indicator to track the price trends of imported goods into Singapore. Prices of imports, valued at cif (cost, insurance and freight) are obtained monthly from major importers. The weighting pattern of the index is derived from import statistics for 2018.

The **Export Price Index (EPI)** measures changes in the price of all exports of merchandise from Singapore, including re-exports. In general, prices are obtained from major exporters of the selected commodities. Prices used in the index computation, are the prices of goods that physically leave Singapore's main ports of export; also termed as free on board prices. The weights of the index are derived from the distribution of export by commodity in 2018.

Index Formula

The 2018-based series is compiled using the Laspeyres formula where the price and weight reference periods are aligned to the year 2018. The geometric mean formula has been adopted in the computation of unweighted elementary aggregate price indices. The arithmetic mean formula is applied in compiling indices at higher levels of aggregation where weights of specific sub-indices are available.

Measurement of Changes in Price Indices

Change over previous month compares the index of the month with that of the preceding month. Such comparisons measure the change in the price index between two consecutive months. They serve as useful short-term indicators of the price movements.

Change over same period of previous year measures change in the index over a twelve-month period. Such comparisons compare the movement in the price index between similar months in two consecutive years.

Linking the Old 2012-Based Price Index Series to the New 2018-Based Price Index Series

The IPI and EPI have been rebased from base year 2012 to base year 2018. To facilitate comparison of the historical price indices across base years, the old 2012-based series are linked to the new 2018-based series by re-scaling them via a Linked Coefficient. The Linked Coefficient is the ratio of the annual 2018-based index in 2018 to the annual 2012-based index in 2018.

Example : Linking the old Iron & Steel Index series for IPI prior to 2018, to the 2018-based Iron & Steel Index (2018=100)

1) Calculate the linked coefficient

Year	Iron & Steel Index (2012=100)	Iron & Steel Index (2018=100)	Linked Coefficient
2018	93.4	100.0	$100.0 \div 93.4 = 1.071$

2) Re-scaling the old series to the 2018-based series using the Linked Coefficient

Year	Month	Iron & Steel Index (2012=100)	Iron & Steel Index (2018=100)
2016	Dec	84.0	$84.0 \times 1.071 = 90.0$
2017	Jan	85.6	$85.6 \times 1.071 = 91.7$

Linking Method for Maintaining the Old Index Reference Period

To continue the old 2012-based index series going forward in time, re-scale the new 2018-based index series to the old base year 2012 level, via a Linked Coefficient. The Linked Coefficient is the ratio of the annual 2012-based index in 2018 to the annual 2018-based index in 2018.

Example : Linking the new 2018-based Iron & Steel Index series for IPI to the 2012-based Iron & Steel Index (2012=100)

1) Calculate the linked coefficient

Year	Iron & Steel Index (2018=100)	Iron & Steel Index (2012=100)	Linked Coefficient
2018	100.0	93.4	$93.4 \div 100.0 = 0.934$

2) Re-scaling the new series to the 2012-based series using the Linked Coefficient

Year	Month	Iron & Steel Index (2018=100)	Iron & Steel Index (2012=100)
2019	Jan	98.6	$98.6 \times 0.934 = 92.1$
2019	Feb	102.4	$102.4 \times 0.934 = 95.6$

Index Revision

The indices may be revised when late returns and amendments received from respondents are incorporated.

Dissemination of Data

The Import and Export Price Indices are available on the SingStat Website (www.singstat.gov.sg/tablebuilder). Excel tables for this month's report are available at <https://www.singstat.gov.sg/publications/economy/import-export-price-indices> or through the QR code below:



Import Price Index (2018 = 100) June 2020

Chart 1: Index

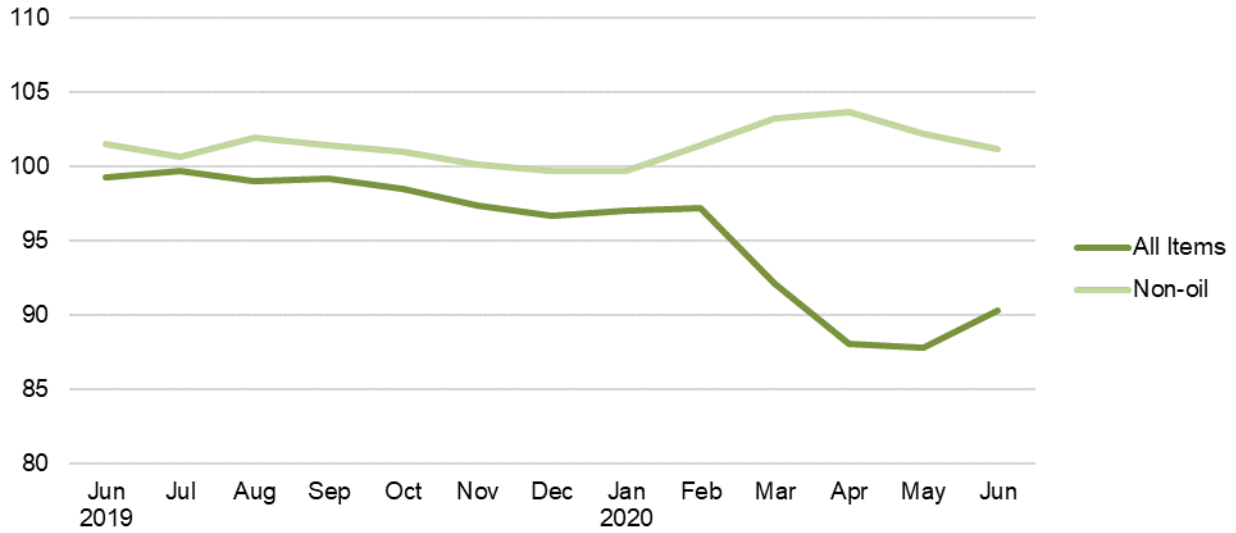


Chart 2: Month-on-Month Change

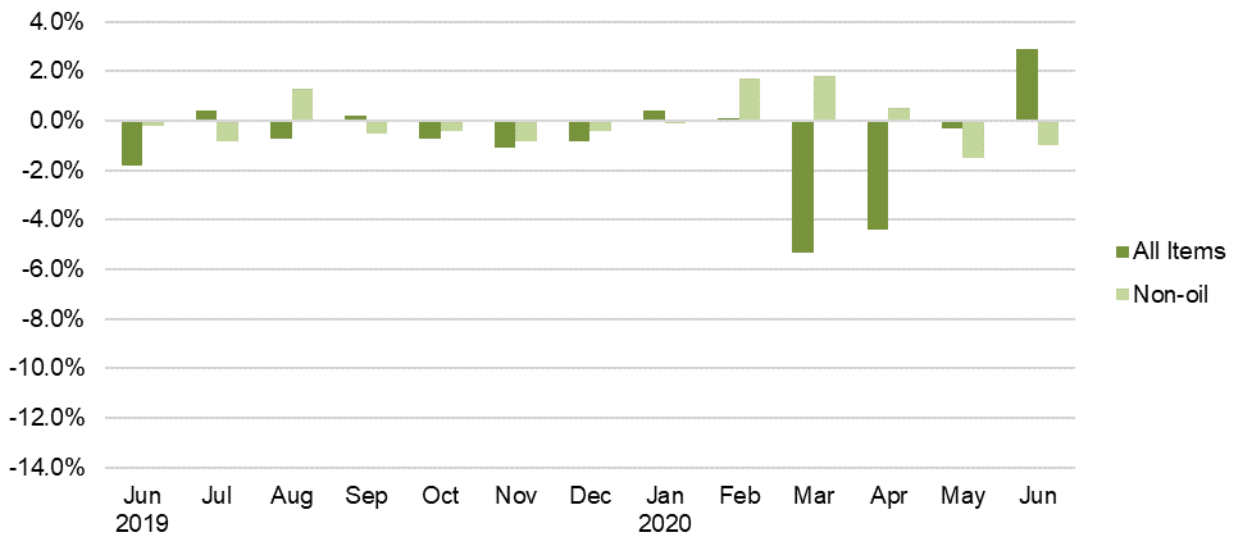
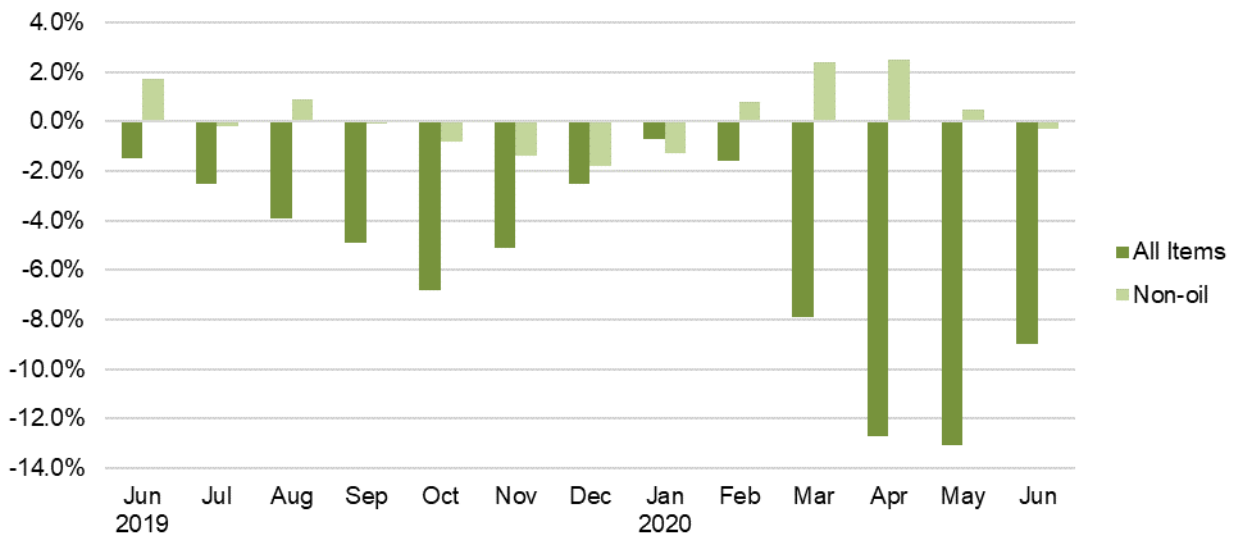


Chart 3: Year-on-Year Change



Export Price Index (2018 = 100) June 2020

Chart 4: Index

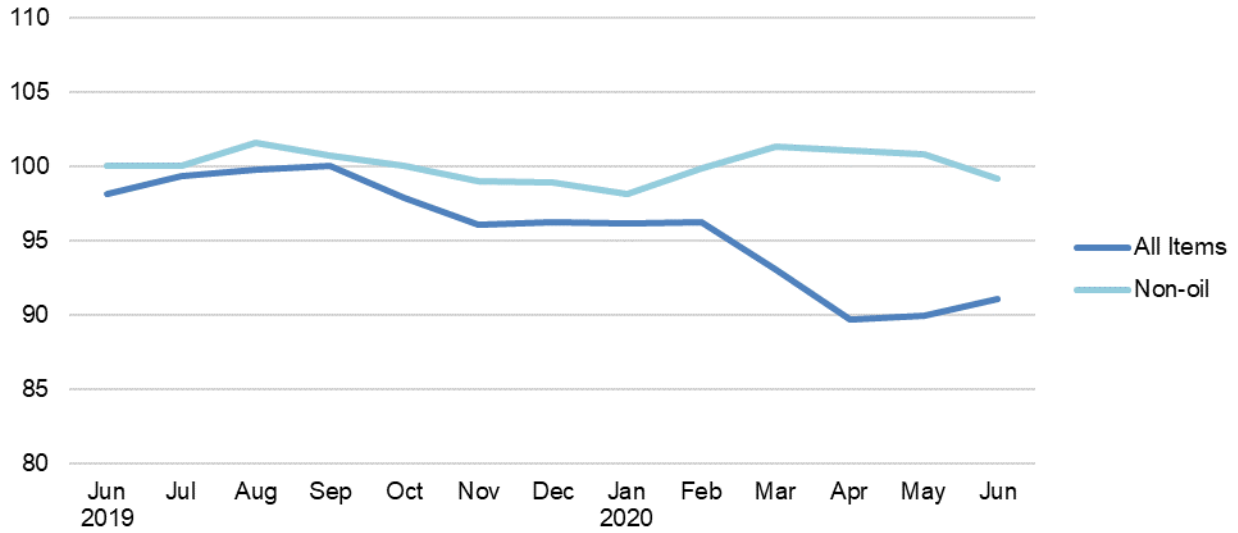


Chart 5: Month-on-Month Change

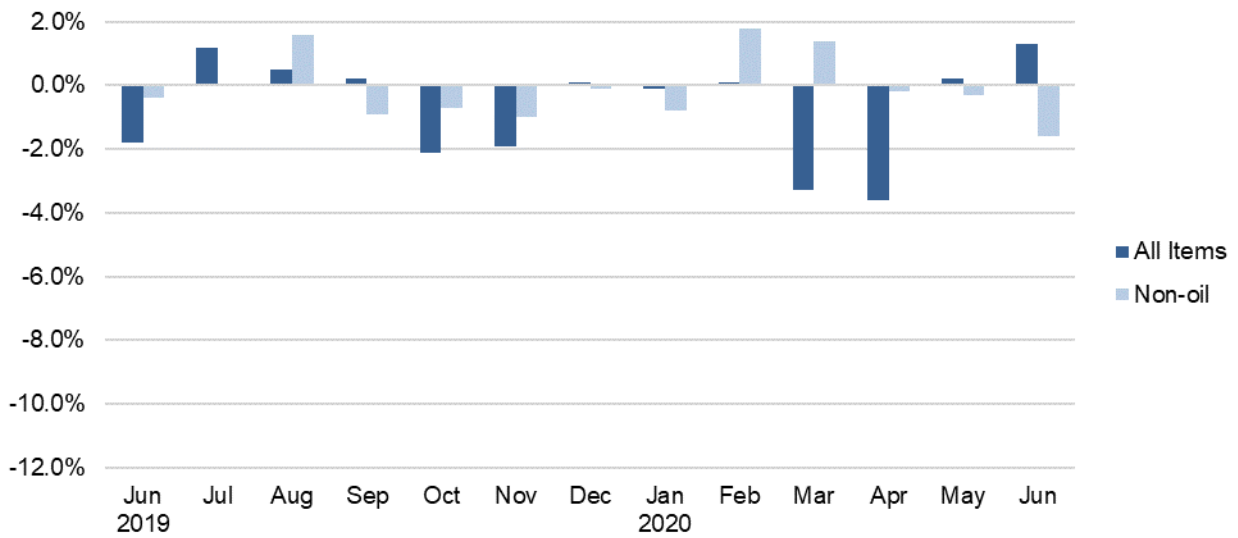


Chart 6: Year-on-Year Change

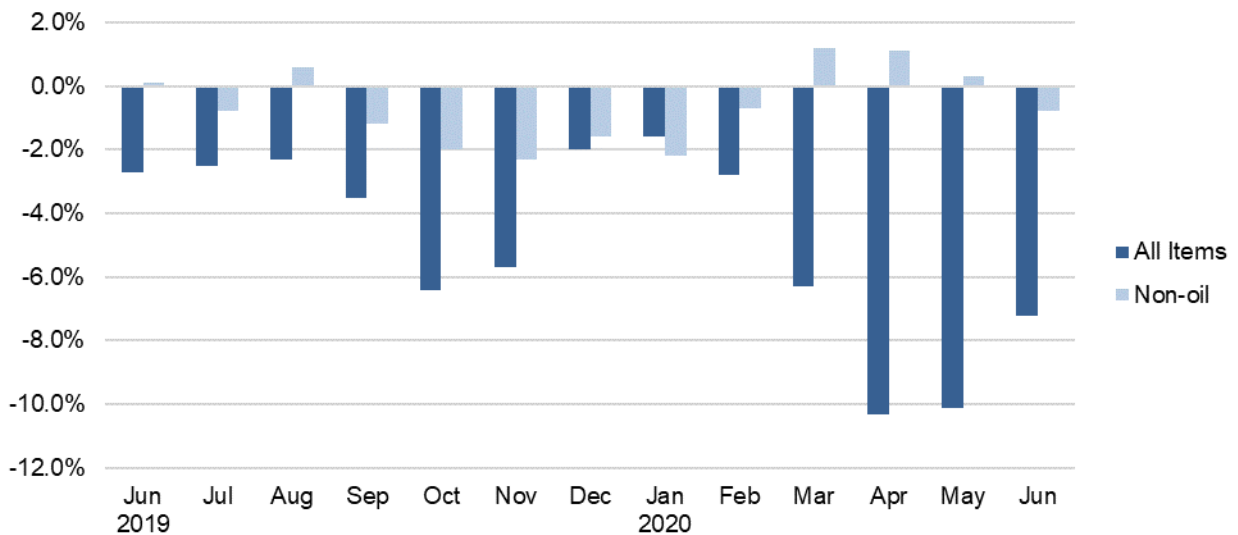


Table 1 Import Price Index

June 2020

Commodity section / division	Weights	Index (2018=100)			% Change		
					May 2020	Jun 2020	Jun 2020
		Apr 2020	May 2020	Jun 2020	Apr 2020	May 2020	Jun 2019
All Items	10,000	88.0	87.7	90.3	-0.3	2.9	-9.0
Non-oil Items	7,410	103.7	102.1	101.1	-1.5	-1.0	-0.3
Food & Live Animals	247	104.5	104.4	103.4	-0.1	-1.0	1.6
Live animals	9	97.7	98.9	101.6	1.3	2.7	4.4
Meat & meat preparations	31	109.2	108.4	107.3	-0.7	-1.0	5.3
Dairy products & birds' eggs	30	113.7	112.0	111.7	-1.5	-0.3	8.0
Fish seafood & preparations	34	98.5	98.7	97.9	0.2	-0.8	-1.0
Cereals & cereal preparations	24	102.0	102.5	101.6	0.5	-0.8	0.8
Vegetables & fruit	48	104.2	105.4	105.6	1.1	0.2	0.6
Sugar, sugar preparations & honey	9	103.6	105.6	106.3	1.9	0.6	7.5
Coffee, tea, cocoa, spices & manufactures	28	99.9	98.5	92.2	-1.4	-6.4	-4.1
Animal feeding stuff (excl unmilled cereals)	4	99.4	98.5	98.6	-0.9	0.1	1.9
Miscellaneous food preparations	31	107.0	106.3	105.6	-0.7	-0.6	-0.9
Beverages & Tobacco	112	104.1	97.0	96.8	-6.8	-0.2	-4.1
Beverages	84	103.8	94.5	94.3	-9.0	-0.2	-6.2
Tobacco & manufactures	28	105.0	104.9	104.5	-0.1	-0.4	2.2
Crude Materials (excl fuels)	84	102.0	101.8	101.4	-0.2	-0.4	-0.6
Oil seeds & oleaginous fruits	2	114.8	116.2	116.0	1.2	-0.2	14.7
Crude rubber	19	113.5	112.6	110.7	-0.8	-1.7	1.8
Cork & wood	3	93.9	93.9	93.1	-	-0.9	-7.4
Crude fertilizers & minerals	30	102.1	102.0	101.8	-0.1	-0.2	0.9
Metalliferous ores & metal scrap	17	88.6	88.5	88.9	-	0.5	-8.1
Crude animal & vegetable materials nes	13	103.9	104.0	104.0	-	-	1.4
Mineral Fuels, Lubricants & Related Materials	2,590	43.1	46.5	59.1	7.9	27.0	-36.3
Petroleum & products & related materials	2,431	42.8	47.0	59.8	9.7	27.2	-35.3
Gas	159	47.7	39.5	48.4	-17.3	22.4	-50.8
Animal & Vegetable Oils, Fats & Waxes	27	96.7	94.2	96.4	-2.6	2.3	10.0
Fixed vegetable fats & oils	27	96.7	94.2	96.4	-2.6	2.3	10.0
Chemicals & Chemical Products	888	97.6	96.6	96.1	-1.1	-0.4	-3.0
Organic chemicals	216	88.5	89.0	90.0	0.6	1.1	-5.4
Inorganic chemicals	35	103.4	104.8	104.6	1.4	-0.2	0.4
Dyeing, tanning & colouring materials	33	109.4	108.7	107.9	-0.6	-0.7	0.5
Medicinal & pharmaceutical products	101	105.7	103.5	102.7	-2.0	-0.8	-
Essential oils & perfume; toilet cleaning products	147	101.8	101.9	101.6	0.1	-0.3	2.4
Plastics in primary forms	164	87.7	84.7	81.9	-3.4	-3.2	-13.7
Plastics in non-primary forms	38	106.0	105.7	104.6	-0.3	-1.0	2.8
Chemical materials & products nes	154	105.6	103.4	103.8	-2.1	0.4	0.7
Manufactured Goods	505	100.4	100.2	99.7	-0.2	-0.6	0.1
Rubber manufactures nes	25	99.3	98.8	98.9	-0.5	0.1	1.0
Paper manufactures	51	94.4	94.2	93.3	-0.3	-1.0	-5.1
Textile manufactures	26	103.8	103.3	102.9	-0.5	-0.5	0.5
Non-metal mineral manufactures nes	60	105.4	104.7	104.7	-0.7	0.1	3.4
Iron & steel	131	100.1	99.4	97.7	-0.7	-1.7	-2.4
Non-ferrous metals	84	97.3	97.8	99.7	0.5	1.9	2.9
Manufactures of metals nes	128	102.4	102.6	101.2	0.2	-1.4	1.0
Machinery & Transport Equipment	4,690	104.4	102.4	101.3	-1.9	-1.1	-0.8
Power-generating machinery & equipment	526	114.7	114.2	112.8	-0.4	-1.3	8.0
Machinery specialized for particular industries	306	105.5	105.0	103.3	-0.5	-1.7	2.2
Metal working machinery	23	105.5	105.4	104.8	-0.2	-0.6	5.1
General industrial machinery	281	105.2	105.0	103.6	-0.2	-1.3	3.6
Office machines & data-processing machines	457	98.4	98.6	97.2	0.1	-1.4	-4.8
Telecommunication apparatus	390	91.2	91.2	89.4	-	-2.0	-9.5
Electrical machinery apparatus nes, electrical parts	2,542	105.4	101.9	101.0	-3.3	-0.9	-1.5
Road vehicles	164	99.0	99.6	99.3	0.6	-0.4	-1.3
Miscellaneous Manufactured Articles	857	108.0	107.8	106.7	-0.2	-1.0	4.7
Prefab building, sanitary plumbing, lighting nes	12	101.8	101.8	100.6	-	-1.2	-5.8
Furniture, bedding, mattresses, cushions & others	26	106.2	106.4	105.4	0.1	-0.9	0.5
Travel goods, handbags & similar containers	54	102.2	102.4	102.2	0.3	-0.3	-2.7
Articles of apparel & clothing accessories	79	102.6	102.4	101.7	-0.2	-0.7	1.1
Footwear	24	100.7	100.6	100.3	-0.1	-0.3	-0.3
Professional scientific & controlling instruments	275	108.8	108.4	106.6	-0.4	-1.7	2.5
Photographic & optical goods nes; watches & clocks	106	105.5	105.3	104.8	-0.2	-0.5	3.9
Miscellaneous manufactured articles nes	283	111.9	111.7	110.8	-0.2	-0.8	10.9

Figures may not sum to total due to rounding.

Table 2 Export Price Index

June 2020

Commodity section / division	Weights	Index (2018=100)			% Change		
					May 2020	Jun 2020	Jun 2020
		Apr 2020	May 2020	Jun 2020	Apr 2020	May 2020	Jun 2019
All Items	10,000	89.7	89.9	91.1	0.2	1.3	-7.2
Non-oil Items	8,022	101.1	100.7	99.2	-0.3	-1.6	-0.8
Food & Live Animals	236	93.0	94.6	93.9	1.7	-0.7	-3.8
Dairy products & birds' eggs	5	105.4	104.5	104.4	-0.9	-0.1	2.4
Fish seafood & preparations	9	91.3	93.1	90.2	1.9	-3.1	-7.7
Cereals & cereal preparations	7	99.0	97.9	97.7	-1.1	-0.3	-2.1
Vegetables & fruit	8	94.5	96.2	92.8	1.8	-3.5	2.2
Sugar, sugar preparations & honey	3	104.1	103.9	102.8	-0.2	-1.1	3.3
Coffee, tea, cocoa, spices & manufactures	26	107.1	106.9	105.9	-0.2	-1.0	1.7
Animal feeding stuff (excl unmilled cereals)	7	113.6	118.0	116.2	3.9	-1.5	7.8
Miscellaneous food preparations	171	89.2	91.1	90.8	2.1	-0.3	-5.7
Beverages & Tobacco	103	107.4	106.7	105.5	-0.7	-1.1	3.1
Beverages	75	107.6	106.7	105.6	-0.8	-1.0	3.6
Tobacco & manufactures	28	106.9	106.5	105.2	-0.4	-1.3	1.8
Crude Materials (excl fuels)	91	82.0	83.5	83.4	1.7	-	-8.9
Crude rubber	35	89.5	89.3	87.6	-0.3	-1.8	-7.3
Pulp and waste paper	26	70.6	76.9	78.0	8.9	1.3	-11.5
Metalliferous ores & metal scrap	26	81.1	80.2	81.5	-1.1	1.6	-9.2
Crude animal & vegetable materials nes	4	96.7	95.8	94.4	-0.9	-1.5	-4.1
Mineral Fuels, Lubricants & Related Materials	1,978	43.5	45.9	58.3	5.4	27.1	-35.6
Petroleum & products & related materials	1,978	43.5	45.9	58.3	5.4	27.1	-35.6
Animal & Vegetable Oils, Fats & Waxes	5	106.5	105.3	105.1	-1.1	-0.2	10.6
Fixed vegetable fats & oils	5	106.5	105.3	105.1	-1.1	-0.2	10.6
Chemicals & Chemical Products	1,525	92.2	90.6	89.7	-1.7	-1.0	-5.5
Organic chemicals	428	82.6	80.3	81.3	-2.7	1.2	-8.4
Inorganic chemicals	14	110.5	108.5	109.4	-1.7	0.8	6.5
Dyeing, tanning & colouring materials	37	100.8	100.7	100.3	-0.1	-0.4	-3.0
Medicinal & pharmaceutical products	250	99.4	99.2	98.4	-0.2	-0.8	0.3
Essential oils & perfume; toilet cleaning products	232	100.0	99.5	98.7	-0.5	-0.9	-1.1
Plastics in primary forms	355	85.5	81.8	78.9	-4.3	-3.6	-15.3
Plastics in non-primary forms	29	109.4	109.1	108.3	-0.2	-0.7	6.9
Chemical materials & products nes	181	102.2	102.6	101.1	0.4	-1.5	2.0
Manufactured Goods	318	96.7	96.9	97.3	0.3	0.4	-0.7
Rubber manufactures nes	22	101.3	101.0	100.0	-0.3	-1.0	2.4
Paper manufactures	41	100.3	99.7	98.6	-0.6	-1.0	-0.6
Textile manufactures	19	103.2	103.3	102.0	0.1	-1.2	1.8
Non-metal mineral manufactures nes	14	102.8	102.5	101.0	-0.3	-1.5	2.2
Iron & steel	66	97.6	97.6	97.2	-	-0.4	-6.1
Non-ferrous metals	67	82.9	85.2	89.5	2.7	5.0	-1.6
Manufactures of metals nes	89	101.1	100.7	100.3	-0.4	-0.5	2.2
Machinery & Transport Equipment	4,836	103.9	103.8	101.7	-0.1	-2.0	-
Power-generating machinery & equipment	418	104.4	103.8	102.5	-0.6	-1.2	2.1
Machinery specialized for particular industries	437	100.7	105.8	104.7	5.1	-1.0	-0.8
Metal working machinery	25	106.2	102.7	101.2	-3.3	-1.5	-2.3
General industrial machinery	212	104.4	103.9	102.8	-0.5	-1.0	4.1
Office machines & data-processing machines	467	108.7	107.5	104.4	-1.1	-2.9	2.4
Telecommunication apparatus	366	92.7	92.6	92.4	-0.1	-0.2	-1.7
Electrical machinery apparatus nes, electrical parts	2,814	104.9	104.3	101.8	-0.6	-2.4	-0.6
Road vehicles	98	106.6	106.3	104.6	-0.2	-1.6	1.7
Miscellaneous Manufactured Articles	908	105.6	105.4	104.1	-0.2	-1.3	2.7
Prefab building, sanitary plumbing, lighting nes	3	102.1	102.9	103.8	0.8	0.8	4.5
Furniture, bedding, mattresses, cushions & others	5	103.9	103.7	103.1	-0.2	-0.5	1.7
Travel goods, handbags & similar containers	37	100.9	103.7	103.4	2.8	-0.3	6.2
Articles of apparel & clothing accessories	40	113.1	114.3	114.1	1.1	-0.1	2.0
Footwear	14	98.3	97.8	96.2	-0.5	-1.7	-2.7
Professional scientific & controlling instruments	365	96.9	96.0	94.4	-0.9	-1.6	-4.4
Photographic & optical goods nes; watches & clocks	98	104.5	104.3	103.5	-0.1	-0.8	3.2
Miscellaneous manufactured articles nes	345	115.2	115.2	113.7	-	-1.3	9.8

Figures may not sum to total due to rounding.

Table 3 Import Price Index

Section	All Items	Non-oil Items	Food & Live Animals	Beverages & Tobacco	Crude Materials	Mineral Fuels	Animal & Vegetable Oils, Fats & Waxes	Chemicals & Chemical Products	Manu- factured Goods	Machinery & Transport Equipment	Misc. Manu- factured Articles
Weights	10,000	7,410	247	112	84	2,590	27	888	505	4,690	857
Index (2018=100)											
2016	90.1	100.4	99.5	99.6	97.8	61.5	110.6	93.8	92.3	102.4	101.8
2017	95.3	101.0	101.2	100.2	100.5	79.7	114.7	96.7	96.4	102.2	101.6
2018	100.0	100.0	100.0	100.0	100.0	100.0	100.0	100.0	100.0	100.0	100.0
2019	99.0	100.9	101.5	100.4	101.2	93.4	90.4	98.6	99.9	101.3	102.0
2019											
Jun	99.2	101.4	101.8	100.9	102.0	92.8	87.6	99.1	99.6	102.0	102.0
Jul	99.6	100.6	102.3	100.0	101.5	96.9	86.2	98.4	99.2	100.9	102.2
Aug	99.0	101.9	102.6	100.7	102.4	90.6	88.6	98.9	100.0	102.3	104.1
Sep	99.1	101.4	102.6	100.3	101.2	92.7	89.1	98.8	100.5	101.5	103.9
Oct	98.4	100.9	102.5	100.0	100.8	91.4	89.5	98.2	100.0	101.1	103.4
Nov	97.4	100.1	101.6	99.7	100.7	89.5	93.7	97.3	99.6	100.2	102.4
Dec	96.6	99.7	102.2	99.5	101.1	87.8	98.9	96.4	99.5	99.7	102.2
2020											
Jan	97.0	99.6	103.0	101.3	101.7	89.5	102.9	96.2	98.1	99.7	102.3
Feb	97.2	101.4	103.1	102.3	102.7	85.1	101.6	98.1	99.9	101.4	104.3
Mar	92.0	103.2	103.2	104.0	103.6	60.3	99.0	98.9	100.5	103.6	106.8
Apr	88.0	103.7	104.5	104.1	102.0	43.1	96.7	97.6	100.4	104.4	108.0
May	87.7	102.1	104.4	97.0	101.8	46.5	94.2	96.6	100.2	102.4	107.8
Jun	90.3	101.1	103.4	96.8	101.4	59.1	96.4	96.1	99.7	101.3	106.7
Percentage Change over same period of previous year (%)											
2017	5.8	0.6	1.7	0.7	2.7	29.5	3.7	3.1	4.5	-0.3	-0.1
2018	4.9	-1.0	-1.2	-0.2	-0.5	25.5	-12.8	3.4	3.7	-2.1	-1.6
2019	-1.0	0.9	1.5	0.4	1.2	-6.6	-9.6	-1.4	-0.1	1.3	2.0
2019											
Jun	-1.5	1.7	2.6	0.5	1.5	-10.2	-13.4	-0.9	-1.2	2.5	1.8
Jul	-2.5	-0.2	2.2	-0.8	-	-8.8	-13.7	-2.4	-1.7	-	1.7
Aug	-3.9	0.9	1.7	-0.2	0.8	-16.7	-9.5	-2.1	-0.8	1.2	3.6
Sep	-4.9	-0.1	1.5	-0.6	-	-17.5	-7.3	-2.5	0.1	-0.2	3.2
Oct	-6.8	-0.8	1.3	-0.9	-	-21.7	-5.1	-3.5	-0.6	-1.0	2.6
Nov	-5.1	-1.4	0.8	-1.3	-	-15.3	3.6	-3.7	-0.4	-1.9	2.1
Dec	-2.5	-1.8	1.2	-1.4	0.7	-4.5	9.6	-3.8	-0.6	-2.5	1.8
2020											
Jan	-0.7	-1.3	1.7	0.5	2.0	1.3	12.7	-2.9	-1.3	-1.9	1.4
Feb	-1.6	0.8	2.9	1.7	2.6	-9.2	12.0	-0.6	-0.5	0.5	3.5
Mar	-7.9	2.4	3.0	3.3	3.3	-38.4	10.4	-0.2	-0.1	2.4	6.2
Apr	-12.7	2.5	4.3	3.4	0.4	-56.8	7.2	-2.0	0.4	2.7	7.3
May	-13.1	0.5	3.4	-3.9	-1.1	-53.1	5.7	-2.9	-0.2	0.1	6.2
Jun	-9.0	-0.3	1.6	-4.1	-0.6	-36.3	10.0	-3.0	0.1	-0.8	4.7

Table 4 Export Price Index

Section	All Items	Non-oil Items	Food & Live Animals	Beverages & Tobacco	Crude Materials	Mineral Fuels	Animal & Vegetable Oils, Fats & Waxes	Chemicals & Chemical Products	Manufactured Goods	Machinery & Transport Equipment	Misc. Manufactured Articles
Weights	10,000	8,022	236	103	91	1,978	5	1,525	318	4,836	908
Index (2018=100)											
2016	94.2	101.8	102.2	103.4	88.0	64.7	97.7	96.8	95.6	104.2	100.8
2017	96.9	100.9	100.0	101.7	101.1	81.4	102.8	97.7	98.2	102.0	101.5
2018	100.0	100.0	100.0	100.0	100.0	100.0	100.0	100.0	100.0	100.0	100.0
2019	98.6	100.1	97.6	102.6	90.6	92.4	97.1	94.8	98.7	101.8	101.9
2019											
Jun	98.1	100.0	97.7	102.3	91.5	90.6	95.0	94.9	98.0	101.7	101.3
Jul	99.3	100.0	98.1	102.2	90.3	96.5	98.8	94.3	98.2	101.9	101.2
Aug	99.8	101.6	97.8	102.6	89.1	92.5	100.4	94.7	99.3	103.9	103.6
Sep	100.0	100.7	97.9	103.2	87.4	97.0	97.6	94.1	99.6	102.7	103.6
Oct	97.9	100.0	97.2	103.3	85.4	89.4	94.3	93.3	98.6	102.0	102.7
Nov	96.1	99.0	97.0	102.4	82.3	84.3	94.9	92.8	97.9	100.8	101.5
Dec	96.2	98.9	95.7	102.9	81.6	85.3	97.9	91.8	97.5	101.1	101.3
2020											
Jan	96.1	98.1	94.9	103.5	82.6	88.0	99.7	91.0	97.0	100.3	100.7
Feb	96.2	99.9	97.5	105.5	82.2	81.3	105.4	93.0	97.5	102.0	102.7
Mar	93.0	101.3	96.1	106.3	82.4	59.4	110.8	93.4	97.3	103.7	105.6
Apr	89.7	101.1	93.0	107.4	82.0	43.5	106.5	92.2	96.7	103.9	105.6
May	89.9	100.7	94.6	106.7	83.5	45.9	105.3	90.6	96.9	103.8	105.4
Jun	91.1	99.2	93.9	105.5	83.4	58.3	105.1	89.7	97.3	101.7	104.1
Percentage Change over same period of previous year (%)											
2017	2.9	-0.9	-2.2	-1.7	14.9	25.7	5.2	0.9	2.7	-2.1	0.7
2018	3.2	-0.9	-	-1.7	-1.1	22.9	-2.7	2.3	1.9	-1.9	-1.5
2019	-1.4	0.1	-2.4	2.6	-9.4	-7.6	-2.9	-5.2	-1.3	1.8	1.9
2019											
Jun	-2.7	0.1	-1.9	2.6	-8.3	-13.4	-5.5	-5.5	-3.3	1.9	2.2
Jul	-2.5	-0.8	-3.2	1.5	-10.0	-9.1	-1.9	-7.4	-2.5	1.4	0.4
Aug	-2.3	0.6	-4.3	2.6	-13.0	-13.3	0.3	-6.9	-0.5	3.0	3.4
Sep	-3.5	-1.2	-3.3	1.9	-14.4	-11.8	-2.6	-8.1	-0.1	0.4	2.9
Oct	-6.4	-2.0	-4.5	1.5	-17.6	-22.2	-5.8	-9.1	-2.2	0.3	-
Nov	-5.7	-2.3	-4.3	-0.1	-20.5	-19.0	-4.7	-8.6	-1.8	-0.1	-1.1
Dec	-2.0	-1.6	-4.5	1.0	-20.9	-3.8	-0.7	-7.4	-1.5	0.6	-0.9
2020											
Jan	-1.6	-2.2	-4.9	1.0	-15.4	1.2	0.6	-5.9	-1.4	-1.1	-1.1
Feb	-2.8	-0.7	-1.7	2.9	-14.8	-11.8	9.1	-3.3	-1.8	-	1.0
Mar	-6.3	1.2	-1.8	4.2	-13.8	-38.0	14.0	-3.0	-2.1	2.5	4.1
Apr	-10.3	1.1	-3.3	5.0	-13.7	-56.6	10.2	-4.0	-2.5	2.5	4.9
May	-10.1	0.3	-2.8	4.1	-11.6	-53.3	8.7	-6.4	-1.9	2.1	3.7
Jun	-7.2	-0.8	-3.8	3.1	-8.9	-35.6	10.6	-5.5	-0.7	-	2.7

NOTATIONS

- nes not elsewhere specified
- nil or negligible

NOTES

The Import and Export Price Indices report contains statistics that are the most recent available at the time of its preparation.

Some statistics, particularly those for the most recent time periods, are provisional and may be subject to revision in later issues.