



# Import & Export Price Indices

## June 2024

[www.singstat.gov.sg](http://www.singstat.gov.sg)

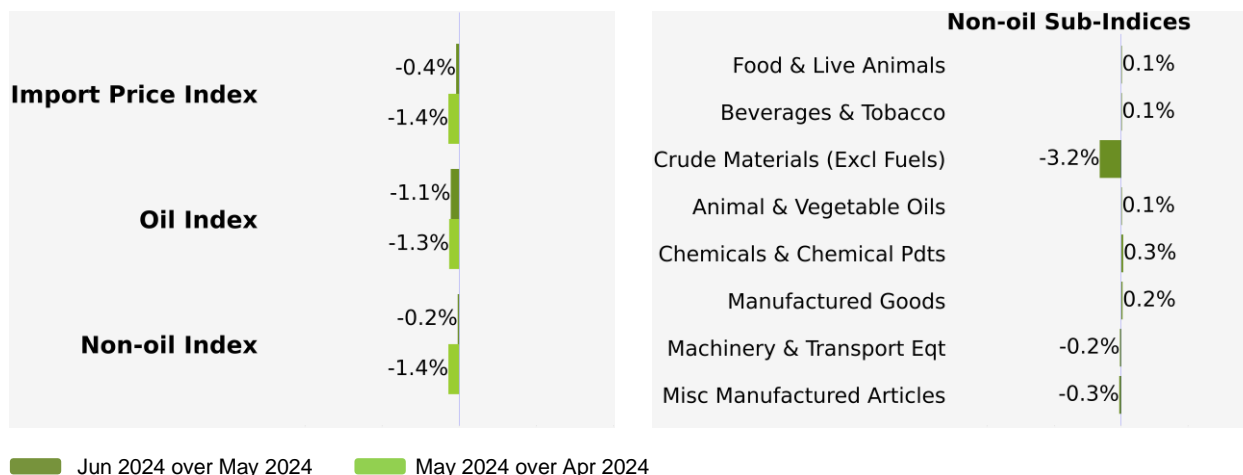
**IMPORT AND EXPORT PRICE INDICES, June 2024**  
**ISSN 2591-7463**

**© Department of Statistics, Ministry of Trade & Industry, Republic of Singapore**

Reproducing or quoting any part of this publication is permitted, provided this publication is accredited as the source. Please refer to the SingStat Website Terms of Use (<http://www.singstat.gov.sg/terms-of-use>) for more details on the conditions of use of this publication.

# Import Price Index (2023 = 100) June 2024

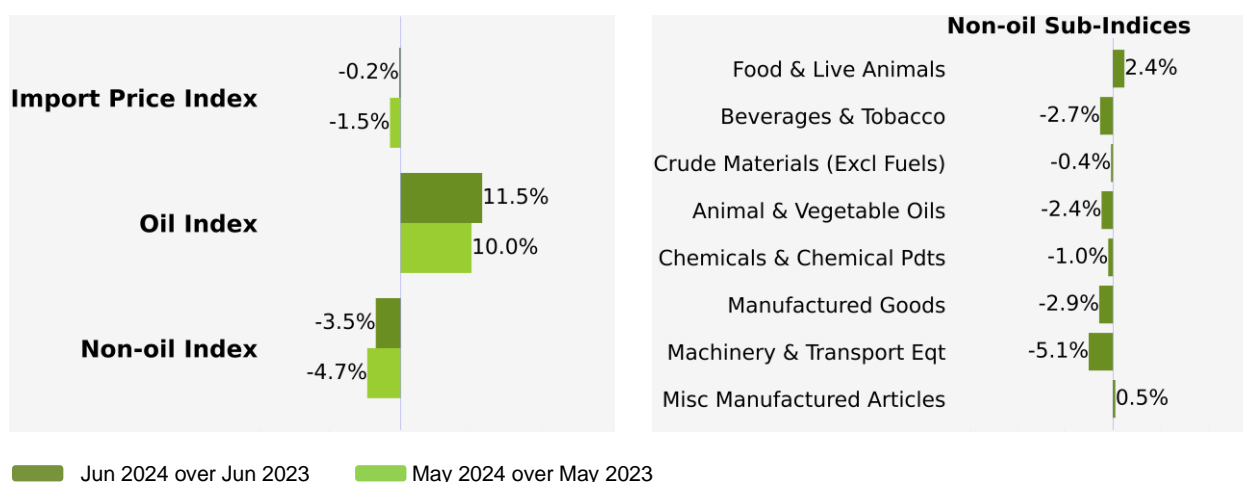
## Month-on-Month Change



The Import Price Index fell 0.4% in June 2024, following the 1.4% decrease in May 2024. The Oil index dropped 1.1%, extending the 1.3% decrease in the previous month. The Non-oil index fell 0.2% in June 2024, continuing the 1.4% decrease in May 2024.

The decrease in the Non-oil index was mainly driven by the Machinery & Transport Equipment index, followed by the Miscellaneous Manufactured Articles and Crude Materials indices. The decreases were partially offset by increases in the Chemicals & Chemical Products, Manufactured Goods, Food & Live Animals, Beverages & Tobacco and Animal & Vegetable Oils indices.

## Year-on-Year Change

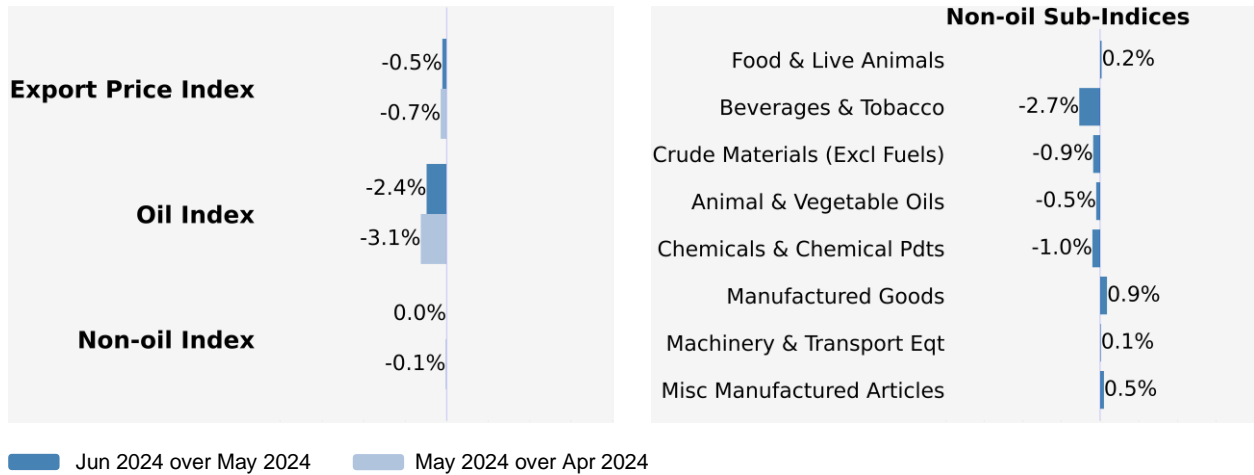


The Import Price Index fell 0.2% in June 2024 from a year ago, following the 1.5% decrease in May 2024. The Oil index rose 11.5% while the Non-oil index declined 3.5%.

For the Non-oil sub-indices, lower prices of Machinery & Transport Equipment (-5.1%), Manufactured Goods (-2.9%), Beverages & Tobacco (-2.7%), Animal & Vegetable Oils (-2.4%), Chemicals & Chemical Products (-1.0%), and Crude Materials (-0.4%) were partially offset by higher prices of Food & Live Animals (2.4%) and Miscellaneous Manufactured Articles (0.5%).

## Export Price Index (2023 = 100) June 2024

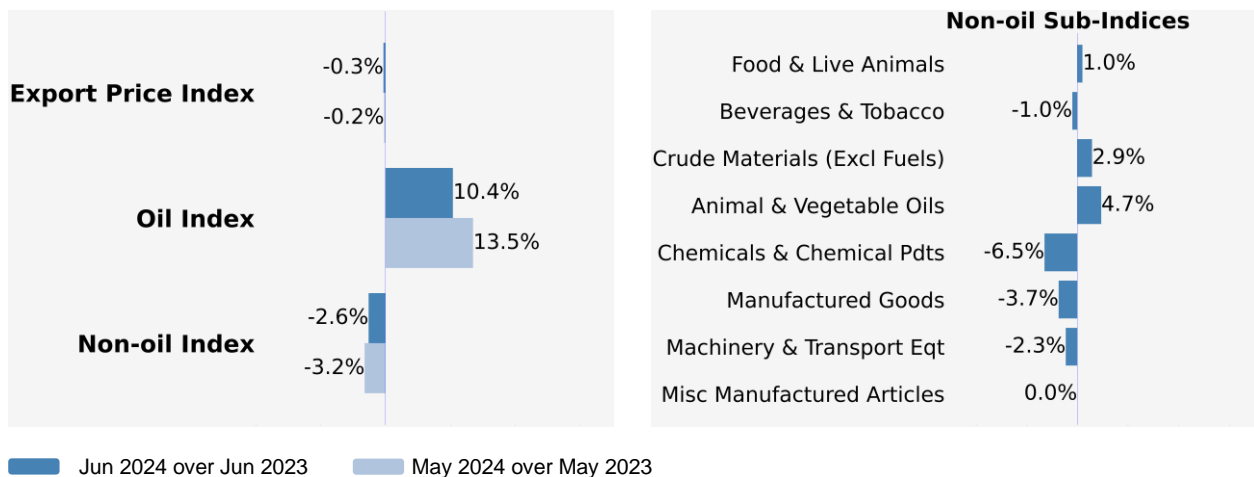
### Month-on-Month Change



The Export Price Index fell 0.5% in June 2024, following the 0.7% decrease in May 2024. The Oil index dropped 2.4%, extending the 3.1% decrease in the previous month. The Non-oil index recorded flat growth in June 2024, after the 0.1% decrease in May 2024.

Among the Non-oil sub-indices, there was a decrease in the Chemicals & Chemical Products index, mainly due to lower prices of medicinal & pharmaceutical products. There were also decreases in the Beverages & Tobacco, Crude Materials and Animal & Vegetable Oils indices. However, the decreases were offset by increases in the Machinery & Transport Equipment, Miscellaneous Manufactured Articles, Manufactured Goods and Food & Live Animals indices.

### Year-on-Year Change



The Export Price Index fell 0.3% in June 2024 from a year ago, following the 0.2% decrease in May 2024. The Oil index rose 10.4% while the Non-oil index decreased 2.6%.

For the Non-oil sub-indices, lower prices of Chemicals & Chemical Products (-6.5%), Manufactured Goods (-3.7%), Machinery & Transport Equipment (-2.3%), and Beverages & Tobacco (-1.0%) were partially offset by higher prices of Animal & Vegetable Oils (4.7%), Crude Materials (2.9%), and Food & Live Animals (1.0%).



## Technical Note

The **Import Price Index (IPI)** is used primarily as an indicator to track the price trends of imported goods into Singapore. Prices of imports, valued at CIF terms (cost, insurance and freight) are obtained monthly from major importers. The weighting pattern of the index is derived from import statistics for 2023.

The **Export Price Index (EPI)** measures changes in the price of all exports of merchandise from Singapore, including re-exports. In general, prices are obtained from major exporters of the selected commodities. Prices used in the index computation, are the prices of goods that physically leave Singapore's main ports of export; also termed as Free on Board (FOB) prices. The weights of the index are derived from the distribution of export by commodity in 2023.

### Index Formula

The 2023-based series is compiled using the Laspeyres formula where the price and weight reference periods are aligned to the year 2023. The geometric mean formula has been adopted in the computation of unweighted elementary aggregate price indices. The arithmetic mean formula is applied in compiling indices at higher levels of aggregation where weights of specific sub-indices are available.

### Measurement of Changes in Price Indices

*Change over previous month* compares the index of the month with that of the preceding month. Such comparisons measure the change in the price index between two consecutive months. They serve as useful short-term indicators of the price movements.

*Change over same period of previous year* measures change in the index over a twelve-month period. Such comparisons compare the movement in the price index between similar months in two consecutive years.

### Linking the Old 2018-Based Price Index Series to the New 2023-Based Price Index Series

The IPI and EPI have been rebased from base year 2018 to base year 2023. To facilitate comparison of the historical price indices across base years, the old 2018-based series are linked to the new 2023-based series by re-scaling them via a Linked Coefficient. The Linked Coefficient is the ratio of the annual 2023-based index in 2023 to the annual 2018-based index in 2023.

Example: Linking the old Iron & Steel Index series for IPI prior to 2023, to the 2023-based Iron & Steel Index (2023=100)

1) Calculate the linked coefficient

Year	Iron & Steel Index (2018=100)	Iron & Steel Index (2023=100)	Linked Coefficient
2023	117.2	100.0	$100.0 \div 117.2 = 0.853$

2) Re-scaling the old series to the 2023-based series using the Linked Coefficient

Year	Month	Iron & Steel Index (2018=100)	Iron & Steel Index (2023=100)
2021	Dec	130.3	$130.3 \times 0.853 = 111.1$
2022	Jan	128.7	$128.7 \times 0.853 = 109.8$

### Rescaling the 2023-Based Index Series to Previous Years

To continue the old index series going forward in time, re-scale the new 2023-based index series to the old base year level, via a Rescaling Coefficient. The Rescaling Coefficient is the ratio of the annual 2023-based index in 2023 to the annual 2023-based index in the old base year.

Example: Rescaling the new 2023-based Iron & Steel Index series for IPI to the 2018-based Iron & Steel Index (2018=100)

1) Calculate the rescaling coefficient

Base Year	Annual Iron & Steel Index in 2023	Annual Iron & Steel Index in 2018	Linked Coefficient
2023	100.0	85.3	$100.0 \div 85.3 = 1.172$

2) Re-scaling the new series to the 2018-based series using the Rescaling Coefficient

Year	Month	Iron & Steel Index (2023=100)	Iron & Steel Index (2018=100)
2024	Jan	95.6	$95.6 \times 1.172 = 112.0$
2024	Feb	95.3	$95.3 \times 1.172 = 111.7$

### Index Revision

The indices may be revised when late returns and amendments received from respondents are incorporated.

### Dissemination of Data

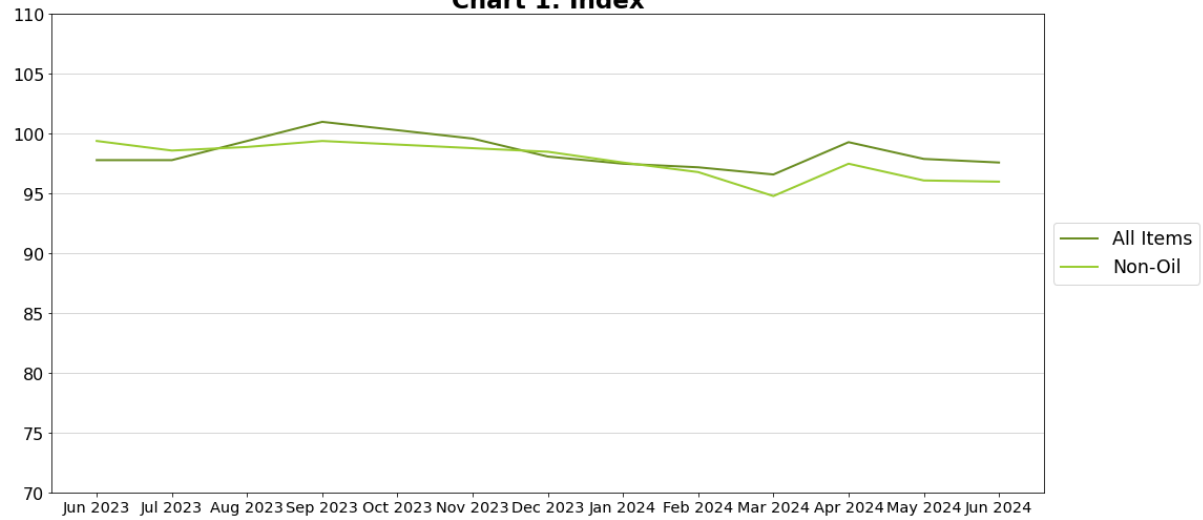
The Import and Export Price Indices are available on the SingStat Website ([www.singstat.gov.sg/tablebuilder](http://www.singstat.gov.sg/tablebuilder)). Excel tables for this month's report are available at <https://www.singstat.gov.sg/publications/economy/import-export-price-indices> or through the QR code below:



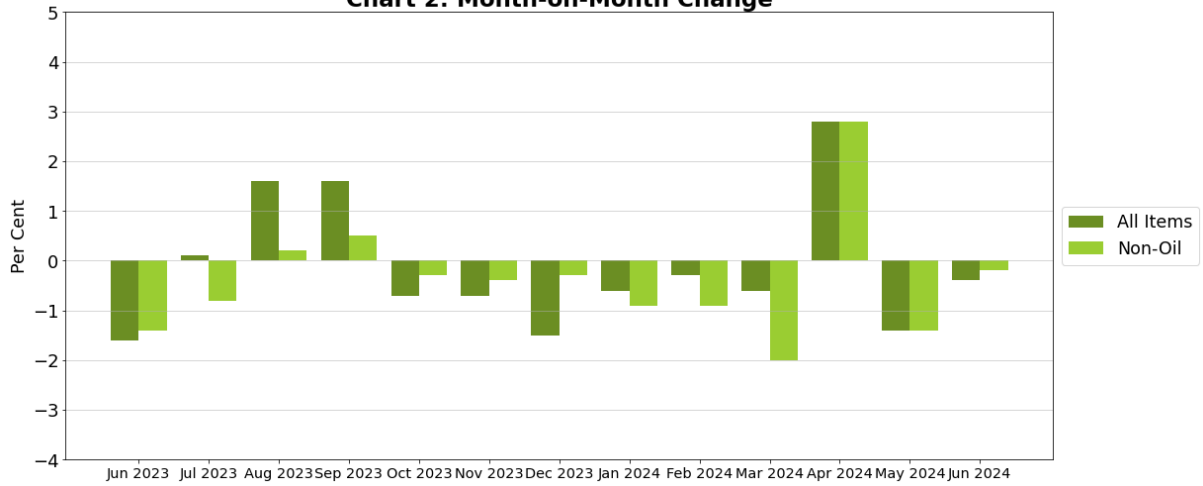
# Import Price Index (2023 = 100)

## June 2024

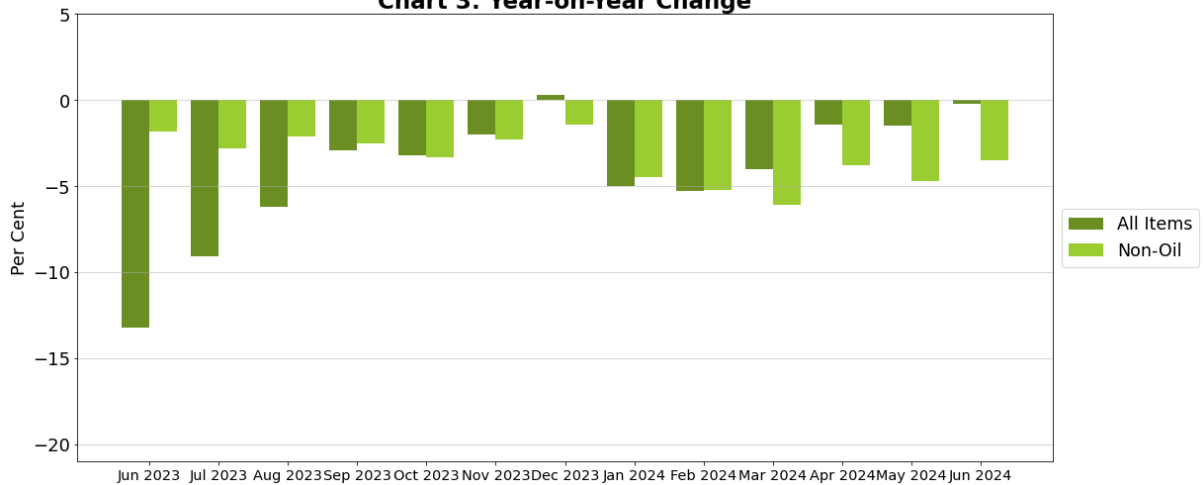
**Chart 1: Index**



**Chart 2: Month-on-Month Change**



**Chart 3: Year-on-Year Change**



## Export Price Index (2023 = 100) June 2024

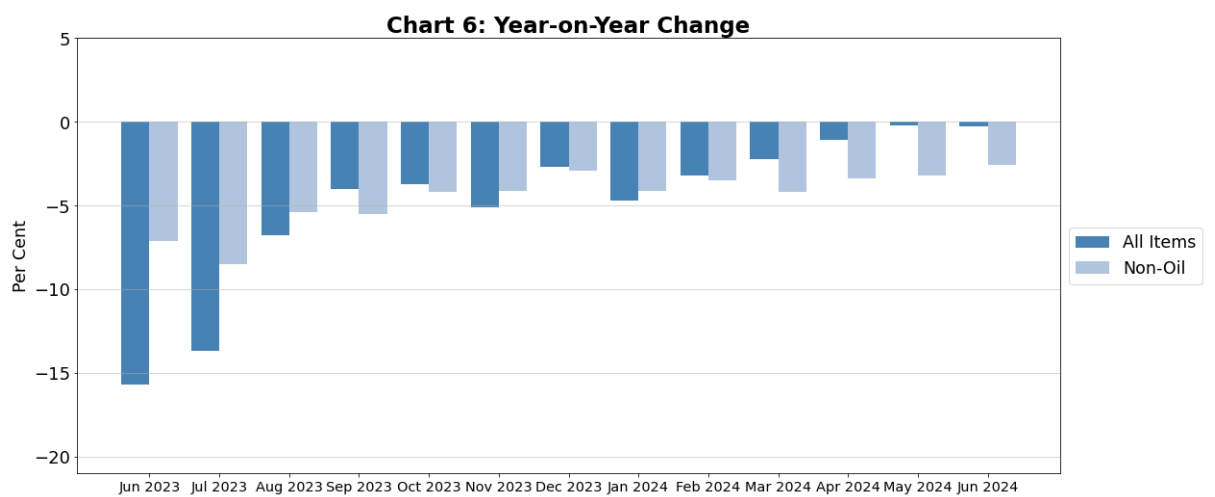
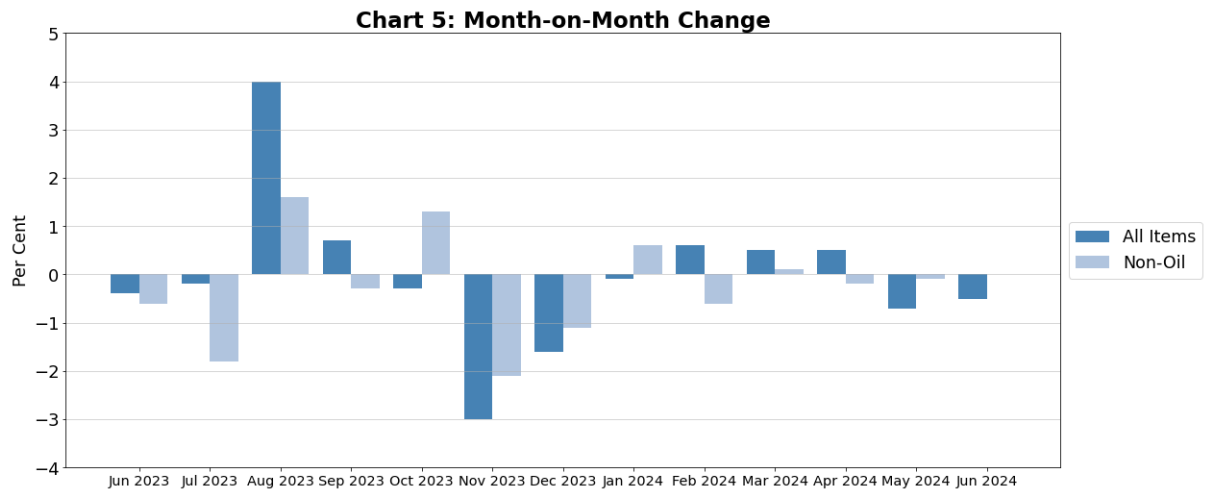
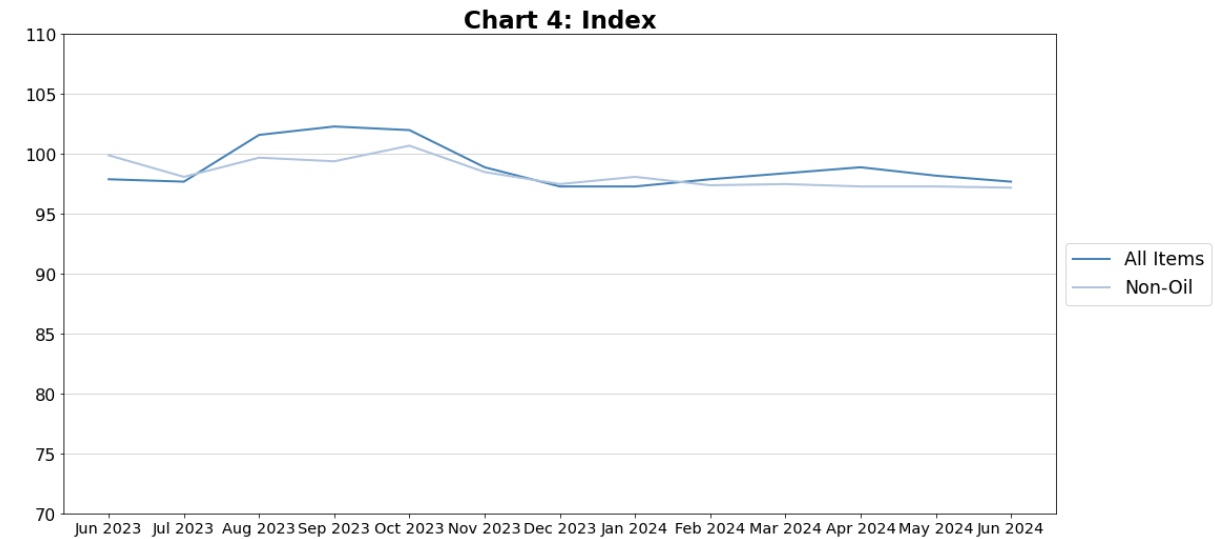




Table 1 Import Price Index

June 2024

Commodity section / division	Weights	Index (2023=100)			% Change		
		Apr 2024	May 2024	Jun 2024	May 2024	Jun 2024	Jun 2024
					Apr 2024	May 2024	Jun 2023
<b>All Items</b>	<b>10,000</b>	<b>99.3</b>	<b>97.9</b>	<b>97.6</b>	<b>-1.4</b>	<b>-0.4</b>	<b>-0.2</b>
<b>Non-oil Items</b>	<b>7,703</b>	<b>97.5</b>	<b>96.1</b>	<b>96.0</b>	<b>-1.4</b>	<b>-0.2</b>	<b>-3.5</b>
Food & Live Animals	254	102.0	102.5	102.6	0.5	0.1	2.4
Live animals	7	85.1	86.7	86.5	1.9	-0.3	-17.1
Meat & meat preparations	35	102.2	103.0	103.0	0.7	-	2.3
Dairy products & birds' eggs	30	95.9	96.8	96.4	0.9	-0.4	-4.0
Fish seafood & preparations	31	102.0	101.2	98.5	-0.8	-2.6	-2.2
Cereals & cereal preparations	26	99.4	99.6	99.1	0.2	-0.5	-1.7
Vegetables & fruit	46	95.9	97.3	97.8	1.4	0.5	-1.3
Sugar, sugar preparations & honey	10	104.8	105.4	105.5	0.5	0.1	5.5
Coffee, tea, cocoa, spices & manufactures	28	126.4	126.5	130.2	-	2.9	29.6
Animal feeding stuff (excl unmilled cereals)	6	100.4	101.5	102.0	1.1	0.5	3.9
Miscellaneous food preparations	35	100.5	101.0	100.8	0.5	-0.2	1.0
Beverages & Tobacco	110	97.8	98.1	98.2	0.3	0.1	-2.7
Beverages	94	97.9	98.3	98.4	0.4	0.1	-2.0
Tobacco & manufactures	16	97.0	96.8	96.8	-0.2	-	-7.0
Crude Materials (excl fuels)	58	95.4	98.7	95.5	3.5	-3.2	-0.4
Hides Skins & Furskins	1	100.0	100.0	100.0	-	-	-
Oil seeds & oleaginous fruits	1	98.2	97.2	97.3	-1.0	0.1	-2.6
Crude rubber	6	95.8	96.6	95.9	0.8	-0.7	-2.7
Cork & wood	2	94.8	95.8	93.8	1.0	-2.1	-5.5
Textile Fibres	3	104.0	103.9	103.6	-1.1	-0.3	3.3
Crude fertilizers & minerals	20	99.2	99.7	99.1	0.5	-0.6	-1.2
Metalliferous ores & metal scrap	16	87.0	97.6	86.6	12.2	-11.3	1.0
Crude animal & vegetable materials nes	9	98.0	98.7	100.2	0.7	1.5	1.0
Mineral Fuels, Lubricants & Related Materials	2,297	105.4	104.0	102.9	-1.3	-1.1	11.5
Petroleum & products & related materials	2,143	105.8	104.2	103.0	-1.6	-1.1	11.8
Gas	155	98.8	101.5	101.4	2.7	-0.1	7.7
Animal & Vegetable Oils, Fats & Waxes	70	95.1	98.5	98.5	3.5	0.1	-2.4
Fixed vegetable fats & oils	15	88.3	87.1	88.0	-1.4	1.0	-11.2
Inedible Mixtures Of Animal Or Vegetable Fats Or Oils	54	97.0	101.6	101.5	4.7	-0.1	-
Chemicals & Chemical Products	874	98.6	98.6	98.9	-	0.3	-1.0
Organic chemicals	297	96.9	97.2	98.4	0.3	1.3	-0.6
Inorganic chemicals	36	95.5	96.5	95.1	1.1	-1.5	-6.0
Dyeing, tanning & colouring materials	23	97.2	97.4	97.7	0.1	0.4	-2.4
Medicinal & pharmaceutical products	133	104.2	104.1	104.0	-	-0.2	3.2
Essential oils & perfume; toilet cleaning products	143	97.8	99.0	98.8	1.2	-0.1	-3.0
Plastics in primary forms	99	93.3	93.5	93.0	0.2	-0.5	-5.9
Plastics in non-primary forms	31	99.6	99.3	99.6	-0.2	0.3	0.6
Chemical materials & products nes	111	102.9	100.4	100.6	-2.4	0.1	1.4
Manufactured Goods	512	97.1	97.2	97.4	0.2	0.2	-2.9
Leather Manufactures & Dressed Furskins	1	102.8	102.8	101.8	-	-0.9	1.6
Rubber manufactures nes	22	99.5	100.3	101.9	0.8	1.6	-1.1
Cork & Wood Manufactures	10	92.8	92.0	91.9	-0.9	-0.1	-6.2
Paper manufactures	36	97.0	97.0	96.9	-	-0.1	-3.7
Textile manufactures	21	99.1	99.0	98.9	-0.1	-0.1	-0.4
Non-metal mineral manufactures nes	70	98.4	97.7	97.1	-0.7	-0.5	-2.7
Iron & steel	113	94.5	92.2	92.8	-2.5	0.7	-6.8
Non-ferrous metals	105	96.4	99.5	99.5	3.2	-	-1.7
Manufactures of metals nes	133	98.8	99.2	99.5	0.5	0.2	-0.9
Machinery & Transport Equipment	4,954	96.4	94.1	93.9	-2.4	-0.2	-5.1
Power-generating machinery & equipment	644	99.4	97.4	96.5	-2.1	-0.9	-3.8
Machinery specialized for particular industries	324	99.1	97.6	97.4	-1.5	-0.2	-1.6
Metal working machinery	15	91.7	92.8	95.7	1.2	3.1	0.7
General industrial machinery	308	98.8	98.1	98.2	-0.6	-	-2.2
Office machines & data-processing machines	368	96.1	98.1	97.2	2.1	-0.9	-10.8
Telecommunication apparatus	412	102.7	104.1	102.6	1.3	-1.4	3.2
Electrical machinery apparatus nes, electrical parts	2,765	94.0	90.2	90.3	-4.1	0.2	-6.8
Road vehicles	117	101.6	101.6	102.1	0.1	0.4	0.8
Miscellaneous Manufactured Articles	872	101.7	101.8	101.4	0.1	-0.3	0.5
Prefab building, sanitary plumbing, lighting nes	12	96.8	96.8	97.6	-	0.8	-3.1
Furniture, bedding, mattresses, cushions & others	26	98.1	98.2	98.7	0.1	0.6	-0.1
Travel goods, handbags & similar containers	66	106.7	106.7	106.7	-	-	6.3
Articles of apparel & clothing accessories	63	88.3	87.8	88.3	-0.5	0.6	-14.8
Footwear	25	99.5	101.6	101.6	2.1	0.1	-2.3
Professional scientific & controlling instruments	256	97.0	96.5	95.5	-0.5	-1.0	-5.1
Photographic & optical goods nes; watches & clocks	104	102.9	103.0	104.0	-	1.0	3.3
Miscellaneous manufactured articles nes	319	107.3	107.9	107.2	0.6	-0.6	6.4

Figures may not sum to total due to rounding.

Table 2 Export Price Index

June 2024

Commodity section / division	Weights	Index (2023=100)			% Change		
					May 2024	Jun 2024	Jun 2024
		Apr 2024	May 2024	Jun 2024	Apr 2024	May 2024	Jun 2023
<b>All Items</b>	<b>10,000</b>	<b>98.9</b>	<b>98.2</b>	<b>97.7</b>	<b>-0.7</b>	<b>-0.5</b>	<b>-0.3</b>
<b>Non-oil Items</b>	<b>8,026</b>	<b>97.3</b>	<b>97.3</b>	<b>97.2</b>	<b>-0.1</b>	<b>-</b>	<b>-2.6</b>
Food & Live Animals	214	100.5	101.3	101.6	0.9	0.2	1.0
Dairy products & birds' eggs	5	95.2	98.3	98.9	3.3	0.6	-0.5
Fish seafood & preparations	6	100.4	100.2	100.4	-0.2	0.2	-0.8
Cereals & cereal preparations	8	94.1	94.5	94.7	0.5	0.2	-5.1
Vegetables & fruit	5	101.3	101.7	99.9	0.4	-1.8	-1.9
Sugar, sugar preparations & honey	3	101.1	102.0	99.1	0.9	-2.9	-3.3
Coffee, tea, cocoa, spices & manufactures	25	115.5	117.0	119.3	1.3	2.0	21.8
Animal feeding stuff (excl unmilled cereals)	7	94.3	94.0	91.9	-0.4	-2.3	-8.2
Miscellaneous food preparations	154	98.8	99.6	99.7	0.8	0.1	-1.3
Beverages & Tobacco	90	101.3	101.2	98.5	-0.2	-2.7	-1.0
Beverages	77	100.5	102.3	99.0	1.8	-3.1	-0.2
Tobacco & manufactures	14	106.3	95.2	95.2	-10.4	-	-5.5
Crude Materials (excl fuels)	62	98.4	103.0	102.1	4.7	-0.9	2.9
Crude rubber	21	98.0	100.7	101.9	2.8	1.2	1.2
Pulp and waste paper	9	105.0	106.7	110.0	1.6	3.1	13.7
Metalliferous ores & metal scrap	30	96.6	103.8	99.8	7.5	-3.8	1.2
Crude animal & vegetable materials nes	3	101.1	101.1	103.0	-	1.8	1.7
Mineral Fuels, Lubricants & Related Materials	1,974	105.1	101.8	99.4	-3.1	-2.4	10.4
Petroleum & products & related materials	1,974	105.1	101.8	99.4	-3.1	-2.4	10.4
Animal & Vegetable Oils, Fats & Waxes	5	101.9	100.9	100.5	-1.0	-0.5	4.7
Fixed vegetable fats & oils	4	102.5	101.8	102.9	-0.7	1.1	8.0
Inedible Mixtures Of Animal Or Vegetable Fats Or Oils	2	100.8	99.3	95.7	-1.5	-3.6	-1.5
Chemicals & Chemical Products	1,297	94.3	94.7	93.8	0.4	-1.0	-6.5
Organic chemicals	339	89.6	89.3	88.6	-0.3	-0.7	-10.2
Inorganic chemicals	14	92.3	91.6	89.9	-0.7	-1.9	-7.8
Dyeing, tanning & colouring materials	25	99.8	98.9	99.6	-0.9	0.7	-2.2
Medicinal & pharmaceutical products	296	91.7	92.7	90.5	1.2	-2.4	-11.4
Essential oils & perfume; toilet cleaning products	233	99.9	99.3	99.1	-0.6	-0.2	-1.0
Plastics in primary forms	232	99.2	99.8	99.3	0.6	-0.5	-1.6
Plastics in non-primary forms	24	101.4	101.2	100.6	-0.3	-0.6	-
Chemical materials & products nes	133	91.8	94.4	93.3	2.9	-1.1	-6.6
Manufactured Goods	277	96.4	96.8	97.7	0.4	0.9	-3.7
Leather Manufactures & Dressed Furskins	3	104.3	99.2	99.2	-4.9	-	-0.8
Rubber manufactures nes	20	103.9	102.6	102.7	-1.2	0.1	3.1
Paper manufactures	35	100.5	100.2	100.4	-0.4	0.2	-0.2
Textile manufactures	14	101.9	101.0	102.5	-1.0	1.5	4.6
Non-metal mineral manufactures nes	18	101.4	101.0	101.9	-0.4	0.9	-0.9
Iron & steel	56	85.3	82.9	83.5	-2.7	0.7	-20.2
Non-ferrous metals	59	96.4	102.1	103.7	5.9	1.6	2.3
Manufactures of metals nes	73	98.4	98.1	99.2	-0.3	1.1	-1.3
Machinery & Transport Equipment	5,185	97.4	97.1	97.2	-0.3	0.1	-2.3
Power-generating machinery & equipment	461	105.6	109.3	104.0	3.6	-4.8	3.4
Machinery specialized for particular industries	650	106.4	107.0	108.8	0.6	1.6	13.1
Metal working machinery	17	100.8	100.6	100.7	-0.2	0.1	0.4
General industrial machinery	207	99.3	99.5	99.5	0.2	-	-1.4
Office machines & data-processing machines	343	95.8	93.7	94.2	-2.2	0.5	-2.4
Telecommunication apparatus	426	94.8	94.8	94.6	-	-0.1	-5.3
Electrical machinery apparatus nes, electrical parts	3,007	94.5	93.6	94.1	-1.0	0.6	-6.1
Road vehicles	73	101.3	101.3	101.2	-	-0.1	0.3
Miscellaneous Manufactured Articles	895	100.4	100.1	100.6	-0.3	0.5	-
Prefab building, sanitary plumbing, lighting nes	3	94.2	94.4	95.0	0.3	0.6	4.9
Furniture, bedding, mattresses, cushions & others	6	104.1	104.1	104.1	-	-	3.3
Travel goods, handbags & similar containers	41	99.3	99.5	99.0	0.2	-0.5	-0.3
Articles of apparel & clothing accessories	32	93.6	92.3	89.4	-1.3	-3.2	-19.1
Footwear	18	108.3	103.6	100.9	-4.4	-2.6	-1.7
Professional scientific & controlling instruments	400	96.2	96.8	98.9	0.6	2.1	-1.2
Photographic & optical goods nes; watches & clocks	85	105.7	106.4	103.8	0.6	-2.5	2.9
Miscellaneous manufactured articles nes	310	104.7	103.4	103.3	-1.3	-0.1	2.8

Figures may not sum to total due to rounding.

**Table 3 Import Price Index**

Section	All Items	Non-oil Items	Food & Live Animals	Beverages & Tobacco	Crude Materials	Mineral Fuels	Animal & Vegetable Oils, Fats & Waxes	Chemicals & Chemical Products	Manufactured Goods	Machinery & Transport Equipment	Misc. Manufactured Articles
Weights	10,000	7,703	254	110	58	2,297	70	874	512	4,954	872
<b>Index (2023=100)</b>											
2023	100.0	100.0	100.0	100.0	100.0	100.0	100.0	100.0	100.0	100.0	100.0
2023											
Jun	97.8	99.4	100.2	100.9	95.8	92.3	101.0	99.9	100.3	98.9	101.0
Jul	97.8	98.6	100.2	101.4	97.8	95.2	100.0	98.3	99.5	98.2	100.1
Aug	99.4	98.9	101.0	101.4	97.7	101.4	101.7	98.9	98.8	98.6	99.4
Sep	101.0	99.4	100.6	101.0	95.3	106.4	100.5	100.4	98.4	99.2	99.7
Oct	100.3	99.1	100.2	100.6	96.0	104.3	99.8	100.5	98.3	98.9	99.3
Nov	99.6	98.8	99.1	100.7	100.1	102.4	99.7	98.8	97.8	98.7	98.9
Dec	98.1	98.5	99.8	100.5	98.6	96.9	98.4	97.8	97.8	98.4	98.8
2024											
Jan	97.5	97.6	101.4	97.5	96.8	97.1	98.8	98.0	97.0	97.2	98.9
Feb	97.2	96.8	101.3	97.7	97.6	98.4	97.3	98.0	96.6	95.9	99.3
Mar	96.6	94.8	100.9	97.7	97.9	102.5	85.8	97.5	96.2	93.0	100.0
Apr	99.3	97.5	102.0	97.8	95.4	105.4	95.1	98.6	97.1	96.4	101.7
May	97.9	96.1	102.5	98.1	98.7	104.0	98.5	98.6	97.2	94.1	101.8
Jun	97.6	96.0	102.6	98.2	95.5	102.9	98.5	98.9	97.4	93.9	101.4
<b>Percentage Change over same period of previous year (%)</b>											
2024	-	-	-	-	-	-	-	-	-	-	-
2023											
Jun	-13.2	-1.8	0.5	12.4	-2.2	-34.8	-28.0	-5.2	-5.7	-1.3	0.7
Jul	-9.1	-2.8	-0.9	13.7	-0.3	-22.8	-22.7	-6.1	-5.7	-2.7	0.5
Aug	-6.2	-2.1	-0.6	14.5	1.4	-14.7	-17.9	-4.6	-5.0	-2.0	0.3
Sep	-2.9	-2.5	-1.5	13.3	-3.8	-2.6	-15.6	-3.0	-5.5	-2.9	-
Oct	-3.2	-3.3	-2.4	12.5	-3.4	-1.9	-14.9	-2.8	-5.9	-4.0	-0.1
Nov	-2.0	-2.3	-2.3	13.0	-0.7	-0.7	-12.9	-3.4	-5.0	-2.6	0.8
Dec	0.3	-1.4	-1.2	12.9	-0.1	4.5	-11.5	-2.7	-3.9	-1.6	1.4
2024											
Jan	-5.0	-4.5	2.1	0.1	-10.0	-6.8	-2.1	-3.2	-5.0	-5.6	-0.9
Feb	-5.3	-5.2	2.1	0.3	-9.0	-5.5	-3.7	-3.3	-5.6	-6.8	-0.5
Mar	-4.0	-6.1	0.6	-0.9	-7.5	3.2	-15.2	-3.9	-5.1	-7.9	-0.5
Apr	-1.4	-3.8	1.8	-1.8	-3.2	6.7	-3.1	-2.5	-4.5	-5.0	0.4
May	-1.5	-4.7	2.8	-2.4	-0.7	10.0	0.9	-1.8	-4.3	-6.7	0.4
Jun	-0.2	-3.5	2.4	-2.7	-0.4	11.5	-2.4	-1.0	-2.9	-5.1	0.5

**Table 4 Export Price Index**

Section	All Items	Non-oil Items	Food & Live Animals	Beverages & Tobacco	Crude Materials	Mineral Fuels	Animal & Vegetable Oils, Fats & Waxes	Chemicals & Chemical Products	Manufactured Goods	Machinery & Transport Equipment	Misc. Manufactured Articles
Weights	<b>10,000</b>	<b>8,026</b>	214	90	62	1,974	5	1,297	277	5,185	895
<b>Index (2023=100)</b>											
2023	<b>100.0</b>	<b>100.0</b>	100.0	100.0	100.0	100.0	100.0	100.0	100.0	100.0	100.0
2023											
Jun	<b>97.9</b>	<b>99.9</b>	100.6	99.5	99.2	90.1	95.9	100.3	101.5	99.5	100.6
Jul	<b>97.7</b>	<b>98.1</b>	99.9	100.0	95.5	96.2	93.3	98.3	100.8	97.7	98.7
Aug	<b>101.6</b>	<b>99.7</b>	100.8	99.7	96.3	109.3	97.0	99.5	100.8	99.9	98.7
Sep	<b>102.3</b>	<b>99.4</b>	101.3	98.7	96.6	114.2	103.8	100.5	99.9	99.1	99.1
Oct	<b>102.0</b>	<b>100.7</b>	100.7	99.3	97.2	107.3	102.7	100.3	98.7	101.0	99.8
Nov	<b>98.9</b>	<b>98.5</b>	101.1	98.0	100.0	100.5	102.4	98.6	98.0	98.5	97.8
Dec	<b>97.3</b>	<b>97.5</b>	99.1	98.0	99.8	96.8	101.4	97.1	97.7	97.1	99.5
2024											
Jan	<b>97.3</b>	<b>98.1</b>	99.9	102.4	98.6	94.2	100.5	96.0	95.7	98.2	100.2
Feb	<b>97.9</b>	<b>97.4</b>	99.9	101.1	99.2	99.9	101.9	94.1	96.0	97.7	100.1
Mar	<b>98.4</b>	<b>97.5</b>	100.4	98.1	99.3	101.9	101.2	94.4	95.5	98.0	99.4
Apr	<b>98.9</b>	<b>97.3</b>	100.5	101.3	98.4	105.1	101.9	94.3	96.4	97.4	100.4
May	<b>98.2</b>	<b>97.3</b>	101.3	101.2	103.0	101.8	100.9	94.7	96.8	97.1	100.1
Jun	<b>97.7</b>	<b>97.2</b>	101.6	98.5	102.1	99.4	100.5	93.8	97.7	97.2	100.6
<b>Percentage Change over same period of previous year (%)</b>											
2024	-	-	-	-	-	-	-	-	-	-	-
2023											
Jun	<b>-15.7</b>	<b>-7.1</b>	-2.5	6.4	-13.2	-38.3	-21.1	-11.5	-3.3	-6.7	-4.5
Jul	<b>-13.7</b>	<b>-8.5</b>	-2.7	6.2	-16.2	-28.3	-22.2	-12.5	-0.4	-8.5	-6.4
Aug	<b>-6.8</b>	<b>-5.4</b>	-2.7	5.3	-17.9	-10.0	-18.6	-9.2	-0.7	-4.8	-4.5
Sep	<b>-4.0</b>	<b>-5.5</b>	-2.9	4.5	-17.9	2.5	-14.8	-8.1	-1.2	-5.2	-5.2
Oct	<b>-3.7</b>	<b>-4.2</b>	-4.1	3.3	-15.7	-1.6	-15.2	-7.0	-1.6	-3.6	-3.4
Nov	<b>-5.1</b>	<b>-4.1</b>	-3.3	0.6	-7.7	-8.2	-13.4	-6.6	-2.2	-3.4	-4.3
Dec	<b>-2.7</b>	<b>-2.9</b>	-2.1	6.1	-5.5	-2.1	-8.8	-5.6	-3.1	-2.7	-0.2
2024											
Jan	<b>-4.7</b>	<b>-4.1</b>	1.9	2.0	-8.4	-7.3	-0.5	-3.8	-4.8	-5.0	-0.7
Feb	<b>-3.2</b>	<b>-3.5</b>	1.9	0.7	-3.3	-1.7	0.8	-6.3	-4.3	-3.6	-0.7
Mar	<b>-2.2</b>	<b>-4.2</b>	0.8	-5.1	-2.8	6.5	-1.8	-7.6	-4.4	-3.9	-2.2
Apr	<b>-1.1</b>	<b>-3.4</b>	-	-1.6	-1.6	8.5	0.5	-7.2	-4.6	-2.9	-1.4
May	<b>-0.2</b>	<b>-3.2</b>	0.9	1.5	0.1	13.5	4.2	-6.5	-4.0	-3.0	-0.8
Jun	<b>-0.3</b>	<b>-2.6</b>	1.0	-1.0	2.9	10.4	4.7	-6.5	-3.7	-2.3	-

**NOTATIONS**

- nes not elsewhere specified
- nil or negligible

**NOTES**

The Import and Export Price Indices report contains statistics that are the most recent available at the time of its preparation.

Some statistics, particularly those for the most recent time periods, are provisional and may be subject to revision in later issues.

# SINGAPORE DEPARTMENT OF STATISTICS COMMUNICATIONS & INFORMATION SERVICES

Singapore Department of Statistics (DOS) offers official statistics, data insights, visualisations and statistical resources through user-friendly platforms.



## SingStat Website

Visit this convenient gateway to access latest data and statistical information.

**Data** across the six major themes of Economy, Industry, Trade & Investment, Population, Households and Society, covering some 200 topics such as Gross Domestic Product, Consumer Price Index, Retail Sales and Food & Beverage Services Indices, Producer Price Indices, Business Expectations, Business Receipts Index, Trade in Services, Direct Investment, Population Indicators, Household Income, Household Expenditure, Deaths and Life Expectancy, Births and Fertility, Marriages and Divorces, and more.

## Publications

- Information Papers which highlight conceptual and methodological changes and improvements in official statistics.
- Occasional Papers which present statistical trends and observations on important social and economic issues to stimulate discussion and research.
- eBook of Statistics which consolidates latest information and resources on key economic and socio-demographic domains.
- Singapore in Figures which allows exploration of key economic and socio-demographic statistics through interactive dashboards.
- Statistics Singapore Newsletter which features articles on latest key statistical activities, recent survey findings and methodological improvements.

**Visualisations** such as infographics and interactive dashboards with latest data, and videos to explain data and statistical concepts.

**Data for Businesses** with data tools to empower data-driven business decisions, giving firms insights on their customers, industries and business performance.

**Advance Release Calendar** providing dates of upcoming data releases in the next six months.



## SingStat Table Builder

Access for free over 2,200 data tables across various economic and socio-demographic domains from 70 public sector agencies. Watch the [video](#) to find out how you can easily access and customise data tables.



## SingStat Mobile App

Download the app for fast and convenient access to commonly used statistics from your mobile devices. Over 260 charts are available across 38 data categories for easy access to visualise data trends.



## SingStat Express

Subscribe to receive alerts on the latest press releases, occasional/information papers and newsletters.



For statistical enquiries, you may reach us at:

✉ email: [info@singstat.gov.sg](mailto:info@singstat.gov.sg) or submit the [Data Request Form](#)

☎ phone: 1800-323 8118\* (Local users) or (65) 6332 7738 (Overseas users)

\* Calls from mobile telephone lines to 1800 local toll-free number may be subject to mobile airtime charges as imposed by the relevant mobile service provider.

Find us on social media!



@SingStat



@singstat\_dos



@SingStatvideo



@sg-department-of-statistics