

# IMPORT & EXPORT PRICE INDICES

March 2018

**IMPORT AND EXPORT PRICE INDICES, March 2018**  
**ISSN 2591-7463**

**© Department of Statistics, Ministry of Trade & Industry, Republic of Singapore**

Reproducing or quoting any part of this publication is permitted, provided this publication is accredited as the source. Please refer to the Statistics Singapore Website Terms of Use (<http://www.singstat.gov.sg/terms-of-use>) for more details on the conditions of use of this publication.

Statistical activities conducted by the Singapore Department of Statistics are governed by the provisions of the Statistics Act (Cap. 317). The Act guarantees the confidentiality of information collected from individuals and companies. It spells out the legislative authority and responsibility of the Chief Statistician. The Act is available in the Department's Website ([www.singstat.gov.sg](http://www.singstat.gov.sg)).

# IMPORT PRICE INDICES (2012 = 100)

**March 2018**

## Import Price Index

### *Change over previous month*

The Import Price Index declined 0.7 per cent in March 2018, extending the 0.5 per cent decrease in February 2018. The Oil index went down 0.2 per cent, due mainly to lower prices of crude petroleum and high speed diesel fuel, after the 3.1 per cent decline in the previous month. The Non-oil index slipped 0.8 per cent in March 2018, against the 0.3 per cent increase February.

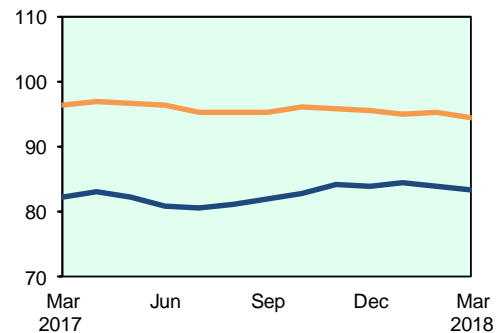
Among the Non-oil sub-indices, declines were led by the Food & Live Animals (-2.2 per cent) and Machinery & Transport Equipment (-1.1 per cent) indices, due mainly to lower prices of vegetables and integrated circuits respectively. Increases in the Chemicals & Chemical Products (0.3 per cent) and Crude Materials (0.1 per cent) indices partially offset the declines.

### *Change over same period of previous year*

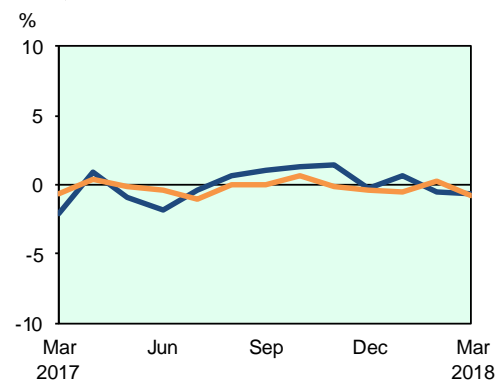
The Import Price Index rose 1.4 per cent in March 2018 from a year ago, after declining 0.1 per cent in February. The Oil index climbed 13.3 per cent, while the Non-oil index slipped 1.9 per cent.

For the Non-oil sub-indices, lower prices of Animal & Vegetable Oils (-11.1 per cent), Food & Live Animals (-3.2 per cent), Machinery & Transport Equipment (-2.7 per cent), Miscellaneous Manufactured Articles (-2.5 per cent), Crude Materials (-1.5 per cent) and Beverages & Tobacco (-1.1 per cent) were partially moderated by higher prices of Manufactured Goods (1.6 per cent) and Chemicals & Chemical Products (0.9 per cent).

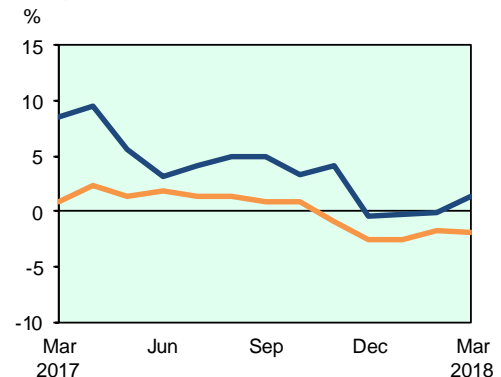
Import Price Index (2012=100) — Overall — Non-oil



Change over previous month



Change over same period of previous year



# EXPORT PRICE INDICES (2012 = 100)

**March 2018**

## Export Price Index

### *Change over previous month*

The Export Price Index decreased 0.3 per cent in March 2018, following the 0.7 per cent decline in February 2018. The Oil index fell 0.4 per cent, extending the 3.2 per cent decrease in the previous month, due to lower prices of bunker fuel and diesel fuel & fuel oils. The Non-oil index fell 0.3 per cent, following the 0.1 per cent decline in February.

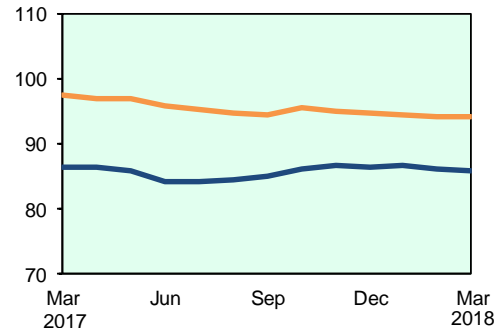
For the Non-oil sub-indices, declines led by the Chemicals & Chemical Products (-0.5 per cent) and Machinery & Transport Equipment (-0.2 per cent) indices were partially offset by increases in the Miscellaneous Manufactured Articles (0.1 per cent) and Animal & Vegetable Oils (0.1 per cent) indices.

### *Change over same period of previous year*

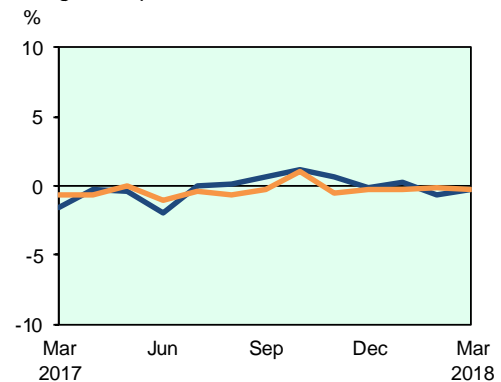
The Export Price Index dropped 0.7 per cent in March 2018 over the previous year, following the 2.0 per cent decline in February 2018. The Oil index rose 13.7 per cent while the Non-oil index slipped 3.5 per cent.

All Non-oil sub-indices, except for the Manufactured Goods (0.6 per cent) index, fell. Lower prices were observed for the Animal & Vegetable Oils (-8.4 per cent), Crude Materials (-4.8 per cent), Machinery & Transport Equipment (-4.7 per cent), Miscellaneous Manufactured Articles (-3.5 per cent), Beverages & Tobacco (-3.2 per cent), Food & Live Animals (-1.0 per cent) and Chemicals & Chemical Products (-0.9 per cent).

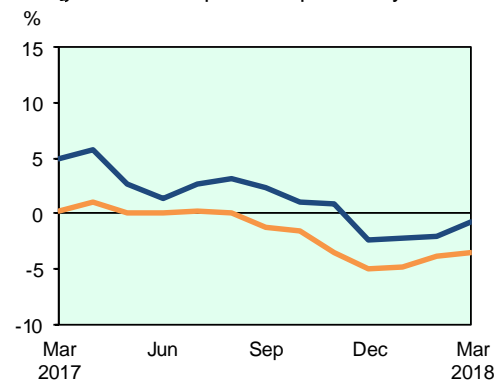
Export Price Index  
(2012=100) — Overall — Non-oil



Change over previous month



Change over same period of previous year



## TECHNICAL NOTE

The *Import Price Index (IPI)* is used primarily as an indicator to track the price trends of imported goods into Singapore. Prices of imports, valued at cif (cost, insurance and freight) are obtained monthly from major importers. The weighting pattern of the index is derived from import statistics for 2012.

The *Export Price Index (EPI)* measures changes in the price of all exports of merchandise from Singapore, including re-exports. In general, prices are obtained from major exporters of the selected commodities. Prices used in the index computation, are the prices of goods that physically leave Singapore's main ports of export; also termed as free on board prices. The weights of the index are derived from the distribution of export by commodity in 2012.

### Index Formula

The 2012-based series is compiled using the Laspeyres formula where the price and weight reference periods are aligned to the year 2012. The geometric mean (GM) formula has been adopted in the computation of unweighted elementary aggregate price indices. The arithmetic mean (AM) formula is applied in compiling indices at higher levels of aggregation where weights of specific sub-indices are available

An Information Paper on the Rebasings of Import and Export Price Indices (2012=100) is available on the department's website at <http://www.singstat.gov.sg/publications/publications-and-papers/economy#prices>.

### Measurement of Changes in Price Indices

*Change over previous month* compares the index of the month with that of the preceding month. Such comparisons measure the change in the price index between two consecutive months. They serve as useful short-term indicators of the price movements. As the price indices are found not to be seasonal, it is not necessary for seasonal adjustment to be carried out.

*Change over same period of previous year* measures change in the index over a twelve-month period. Such comparisons compare the movement in the price index between similar months in two consecutive years.

### Dissemination of Data

The Import and Export Price Indices are published in the Monthly Digest of Statistics.

**Table 1 Import Price Index**

**March 2018**

Commodity section / division	Weights	Index (2012=100)			% Change		
		Jan 2018	Feb 2018	Mar 2018	Feb 2018	Mar 2018	Mar 2018
					Jan 2018	Feb 2018	Mar 2017
<b>All Items</b>	<b>10,000</b>	<b>84.6</b>	<b>84.1</b>	<b>83.5</b>	<b>-0.5</b>	<b>-0.7</b>	<b>1.4</b>
<b>Non-oil Items</b>	<b>6,684</b>	<b>95.1</b>	<b>95.4</b>	<b>94.6</b>	<b>0.3</b>	<b>-0.8</b>	<b>-1.9</b>
Food & Live Animals	215	99.5	99.4	97.2	-0.1	-2.2	-3.2
Live animals	9	96.7	99.9	94.6	3.3	-5.3	-6.2
Meat & meat preparations	26	99.0	99.4	96.7	0.4	-2.7	-6.6
Dairy products & birds' eggs	28	96.6	91.6	89.3	-5.2	-2.5	-3.6
Fish seafood & preparations	28	109.5	111.7	111.8	2.0	0.1	1.2
Cereals & cereal preparations	21	96.8	97.7	99.4	0.9	1.7	7.5
Vegetables & fruit	37	109.6	110.8	102.7	1.1	-7.3	-3.3
Sugar, sugar preparations & honey	12	82.7	81.5	78.7	-1.5	-3.5	-22.7
Coffee, tea, cocoa, spices & manufactures	28	92.2	91.3	91.3	-1.0	0.1	-8.9
Animal feeding stuff (excl unmilled cereals)	3	108.0	108.2	108.4	0.2	0.1	3.1
Miscellaneous food preparations	23	94.9	95.2	95.2	0.3	-	5.0
Beverages & Tobacco	86	103.8	103.9	103.8	-	-	-1.1
Beverages	66	101.9	101.9	101.9	-	-	-1.3
Tobacco & manufactures	20	110.1	110.2	109.9	0.1	-0.3	-0.6
Crude Materials (excl fuels)	83	83.4	83.6	83.7	0.3	0.1	-1.5
Hides, skins & furskins raw	1	86.0	85.1	85.1	-1.1	-0.1	-7.3
Oil seeds & oleaginous fruits	1	93.6	92.3	92.7	-1.3	0.4	-5.2
Crude rubber	17	56.0	56.5	58.7	0.8	4.0	-19.1
Cork & w ood	5	88.5	90.3	90.2	2.0	-0.1	0.8
Textile fibres & their w astes	3	92.5	90.1	90.0	-2.6	-0.1	-9.9
Crude fertilizers & minerals	26	80.0	79.8	79.4	-0.2	-0.5	0.1
Metalliferous ores & metal scrap	21	96.5	96.5	95.6	-	-0.9	6.7
Crude animal & vegetable materials nes	9	105.1	106.9	107.0	1.7	-	3.1
Mineral Fuels, Lubricants & Related Materials	3,316	63.3	61.4	61.2	-3.1	-0.2	13.3
Petroleum & products & related materials	3,152	62.6	60.6	60.4	-3.3	-0.2	13.4
Gas	164	77.1	76.8	75.7	-0.4	-1.4	12.2
Animal & Vegetable Oils, Fats & Waxes	37	74.0	73.7	72.7	-0.4	-1.3	-11.1
Fixed vegetable fats & oils	36	73.7	73.4	72.4	-0.4	-1.4	-11.4
Animal & vegetable oils, fats & w axes nes	1	83.7	83.7	83.6	-	-0.1	-2.8
Chemicals & Chemical Products	694	91.0	92.0	92.2	1.0	0.3	0.9
Organic chemicals	188	85.8	86.4	86.7	0.7	0.3	4.1
Inorganic chemicals	34	98.0	98.7	99.0	0.7	0.3	15.5
Dyeing, tanning & colouring materials	28	87.1	87.6	88.0	0.5	0.5	1.2
Medicinal & pharmaceutical products	70	85.8	87.5	87.3	2.0	-0.2	0.1
Essential oils & perfume; toilet cleaning products	75	104.3	105.6	106.0	1.2	0.4	3.5
Plastics in primary forms	147	91.1	93.0	94.1	2.2	1.1	-0.9
Plastics in non-primary forms	31	98.7	99.5	99.3	0.7	-0.1	-0.5
Chemical materials & products nes	121	90.9	90.8	90.1	-0.1	-0.7	-5.7
Manufactured Goods	635	92.7	93.2	92.9	0.5	-0.3	1.6
Rubber manufactures nes	32	92.3	92.2	91.9	-0.1	-0.3	-3.2
Paper manufactures	50	103.1	103.8	103.9	0.6	0.1	2.8
Textile manufactures	31	98.9	98.9	99.0	-0.1	0.2	-2.9
Non-metal mineral manufactures nes	83	92.5	92.9	93.2	0.4	0.4	-3.1
Iron & steel	179	88.3	88.7	89.2	0.5	0.6	3.5
Non-ferrous metals	116	92.5	93.9	91.8	1.4	-2.2	5.1
Manufactures of metals nes	144	93.8	93.7	93.2	-	-0.5	1.5
Machinery & Transport Equipment	4,205	95.4	95.7	94.6	0.3	-1.1	-2.7
Pow er-generating machinery & equipment	298	123.9	123.9	123.7	-	-0.2	-1.1
Machinery specialized for particular industries	352	93.4	92.2	92.8	-1.3	0.6	-2.8
Metal w orking machinery	31	93.6	94.5	95.0	1.0	0.5	-1.1
General industrial machinery	328	99.6	100.0	99.5	0.4	-0.5	-1.5
Office machines & data-processing machines	495	98.3	98.1	97.9	-0.2	-0.2	-3.3
Telecommunication apparatus	422	69.4	69.1	68.6	-0.5	-0.7	-4.8
Electrical machinery apparatus nes, electrical parts	2,116	95.0	95.8	93.8	0.8	-2.1	-3.1
Road vehicles	163	101.8	101.8	102.5	-	0.6	2.4
Miscellaneous Manufactured Articles	729	99.4	99.3	99.1	-0.1	-0.2	-2.5
Prefab building, sanitary plumbing, lighting nes	16	101.2	101.8	101.5	0.5	-0.2	-0.5
Furniture, bedding, mattresses, cushions & others	25	101.5	101.5	101.7	-	0.2	3.4
Travel goods, handbags & similar containers	25	115.7	115.7	115.6	-	-0.1	0.1
Articles of apparel & clothing accessories	64	106.5	106.7	106.8	0.2	0.1	1.5
Footw ear	16	105.2	105.2	105.2	-0.1	-	0.6
Professional scientific & controlling instruments	207	109.0	108.8	108.2	-0.2	-0.5	-4.8
Photographic & optical goods nes; w atches & clocks	99	92.9	93.2	93.2	0.3	-	-2.8
Miscellaneous manufactured articles nes	277	90.8	90.6	90.5	-0.3	-0.1	-2.6

**Table 2 Export Price Index**

**March 2018**

Commodity section / division	Weights	Index (2012=100)			% Change		
		Jan 2018	Feb 2018	Mar 2018	Feb 2018	Mar 2018	Mar 2018
					Jan 2018	Feb 2018	Mar 2017
<b>All Items</b>	<b>10,000</b>	<b>86.8</b>	<b>86.2</b>	<b>86.0</b>	<b>-0.7</b>	<b>-0.3</b>	<b>-0.7</b>
<b>Non-oil Items</b>	<b>7,395</b>	<b>94.4</b>	<b>94.4</b>	<b>94.1</b>	<b>-0.1</b>	<b>-0.3</b>	<b>-3.5</b>
Food & Live Animals	124	99.1	98.0	97.6	-1.1	-0.3	-1.0
Meat & meat preparations	2	105.0	104.2	104.2	-0.7	-	-0.6
Dairy products & birds' eggs	7	74.1	69.2	73.0	-6.6	5.4	-10.3
Fish seafood & preparations	9	103.7	104.0	103.7	0.3	-0.3	-0.4
Cereals & cereal preparations	7	115.2	114.9	114.8	-0.3	-0.1	6.7
Vegetables & fruit	8	141.7	137.2	136.4	-3.2	-0.5	-0.6
Sugar, sugar preparations & honey	6	96.2	96.1	94.4	-	-1.8	-8.0
Coffee, tea, cocoa, spices & manufactures	29	94.2	93.3	92.2	-0.9	-1.2	-11.0
Animal feeding stuff (excl unmilled cereals)	6	102.1	102.1	101.6	0.1	-0.5	-6.7
Miscellaneous food preparations	50	95.7	94.8	94.6	-0.9	-0.3	7.3
Beverages & Tobacco	87	104.9	105.4	105.3	0.5	-0.1	-3.2
Beverages	66	100.4	101.0	100.9	0.6	-0.1	-3.5
Tobacco & manufactures	21	119.1	119.5	119.1	0.3	-0.3	-2.4
Crude Materials (excl fuels)	60	79.4	79.8	79.4	0.5	-0.5	-4.8
Crude rubber	15	51.1	50.8	50.4	-0.7	-0.8	-34.2
Cork & w ood	2	101.4	102.0	101.9	0.6	-0.1	2.1
Pulp and w aste paper	6	111.1	110.2	108.2	-0.8	-1.8	-4.0
Textile fibres & their w astes	3	76.4	76.4	76.4	-	-	-2.2
Metalliferous ores & metal scrap	29	82.6	83.5	83.6	1.2	0.1	7.1
Crude animal & vegetable materials nes	5	97.0	97.9	96.8	1.0	-1.1	1.9
Mineral Fuels, Lubricants & Related Materials	2,605	65.2	63.1	62.8	-3.2	-0.4	13.7
Petroleum & products & related materials	2,595	65.2	63.1	62.9	-3.2	-0.4	13.8
Gas	10	57.1	50.9	49.4	-10.8	-3.0	-7.2
Animal & Vegetable Oils, Fats & Waxes	8	85.8	85.5	85.6	-0.3	0.1	-8.4
Animal oils & fats	1	96.0	96.7	96.7	0.7	-	12.7
Fixed vegetable fats & oils	5	77.4	76.9	77.0	-0.6	0.1	-11.0
Animal & vegetable oils, fats & w axes nes	2	106.2	106.2	106.2	-	-	-5.8
Chemicals & Chemical Products	1,344	94.4	94.6	94.1	0.2	-0.5	-0.9
Organic chemicals	498	91.1	91.0	89.2	-0.1	-2.0	1.8
Inorganic chemicals	13	94.6	93.5	93.9	-1.1	0.5	-0.4
Dyeing, tanning & colouring materials	32	94.7	93.1	94.5	-1.7	1.5	2.2
Medicinal & pharmaceutical products	228	89.9	89.6	89.3	-0.3	-0.4	-5.5
Essential oils & perfume; toilet cleaning products	127	110.4	110.7	110.2	0.3	-0.4	-1.5
Plastics in primary forms	289	94.5	95.8	96.8	1.4	1.0	2.3
Plastics in non-primary forms	29	94.9	95.6	97.7	0.7	2.3	-0.7
Chemical materials & products nes	128	98.4	98.6	98.9	0.2	0.3	-8.5
Manufactured Goods	381	96.2	96.7	95.9	0.5	-0.8	0.6
Rubber manufactures nes	26	100.5	100.5	100.3	-	-0.2	1.2
Wood & cork manufactures (excl furniture)	2	108.2	112.6	112.4	4.1	-0.2	-0.4
Paper manufactures	40	99.1	98.3	98.0	-0.9	-0.2	-0.6
Textile manufactures	20	101.1	101.3	99.6	0.2	-1.7	-1.9
Non-metal mineral manufactures nes	31	92.7	93.3	93.5	0.6	0.2	-2.3
Iron & steel	96	83.9	84.1	84.8	0.3	0.8	2.3
Non-ferrous metals	76	105.6	108.0	104.1	2.3	-3.6	3.3
Manufactures of metals nes	90	98.7	98.5	98.3	-0.2	-0.3	-1.3
Machinery & Transport Equipment	4,595	93.3	93.2	93.0	-0.1	-0.2	-4.7
Pow er-generating machinery & equipment	188	106.1	105.1	103.3	-1.0	-1.7	-3.3
Machinery specialized for particular industries	397	93.7	93.2	93.7	-0.6	0.6	4.4
Metal w orking machinery	28	105.5	108.3	108.7	2.6	0.4	-0.8
General industrial machinery	243	102.0	101.8	101.8	-0.2	-	-2.3
Office machines & data-processing machines	680	95.4	95.2	94.6	-0.2	-0.7	-8.6
Telecommunication apparatus	336	76.4	75.2	74.3	-1.5	-1.3	-13.7
Electrical machinery apparatus nes, electrical parts	2,582	91.7	91.9	92.0	0.1	0.2	-4.5
Road vehicles	141	116.3	116.4	113.4	-	-2.6	-1.4
Miscellaneous Manufactured Articles	796	99.5	99.1	99.2	-0.4	0.1	-3.5
Prefab building, sanitary plumbing, lighting nes	6	121.5	130.3	136.9	7.3	5.0	17.0
Furniture, bedding, mattresses, cushions & others	5	108.5	108.6	108.3	0.1	-0.2	0.1
Travel goods, handbags & similar containers	11	121.8	119.9	121.9	-1.6	1.7	-1.0
Articles of apparel & clothing accessories	33	102.9	103.3	103.4	0.4	0.1	1.2
Footw ear	8	101.7	101.5	101.5	-0.1	-	-0.9
Professional scientific & controlling instruments	264	103.2	102.8	102.7	-0.4	-0.1	-5.6
Photographic & optical goods nes; w atches & clocks	86	94.2	94.2	94.1	-	-0.1	-0.7
Miscellaneous manufactured articles nes	383	96.7	96.0	96.2	-0.7	0.2	-3.5

**Table 3 Import Price Index**

Section	All Items	Non-oil Items	Food & Live Animals	Beverages & Tobacco	Crude Materials	Mineral Fuels	Animal & Vegetable Oils, Fats & Waxes	Chemicals & Chemical Products	Manufactured Goods	Machinery & Transport Equipment	Misc. Manufactured Articles
Weights	10,000	6,684	215	86	83	3,316	37	694	635	4,205	729
<b>Index (2012=100)</b>											
2014	94.5	97.3	104.2	102.1	93.4	88.8	82.1	97.9	97.7	96.8	97.4
2015	82.5	97.7	101.5	104.7	88.0	52.0	70.1	92.0	94.2	98.7	100.5
2016	78.1	95.7	99.0	104.4	81.8	42.8	76.0	88.1	87.7	97.3	101.3
2017	82.7	96.3	100.6	105.1	84.0	55.4	78.8	90.8	91.6	97.0	101.2
2017											
Mar	82.4	96.5	100.4	105.0	85.0	54.0	81.9	91.4	91.4	97.2	101.7
Apr	83.1	96.9	100.2	105.0	84.8	55.4	78.9	91.1	90.8	98.0	102.0
May	82.4	96.8	100.3	105.2	83.8	53.3	80.4	90.5	90.7	98.0	101.4
Jun	80.9	96.4	100.4	105.1	82.7	49.5	78.1	89.7	90.5	97.6	101.4
Jul	80.6	95.5	100.4	104.8	82.5	50.5	76.0	88.7	90.2	96.5	100.5
Aug	81.1	95.5	100.5	105.6	83.0	52.2	75.4	89.2	91.5	96.2	100.6
Sep	82.0	95.5	101.0	105.4	83.7	54.7	77.5	89.9	91.9	95.9	100.7
Oct	83.0	96.0	100.5	104.8	83.8	56.7	77.2	91.2	93.1	96.5	100.8
Nov	84.2	95.9	100.7	104.6	83.7	60.6	75.8	91.0	92.9	96.4	100.5
Dec	84.0	95.6	100.8	104.5	83.3	60.8	72.7	91.7	92.7	96.0	99.6
2018											
Jan	84.6	95.1	99.5	103.8	83.4	63.3	74.0	91.0	92.7	95.4	99.4
Feb	84.1	95.4	99.4	103.9	83.6	61.4	73.7	92.0	93.2	95.7	99.3
Mar	83.5	94.6	97.2	103.8	83.7	61.2	72.7	92.2	92.9	94.6	99.1
<b>Percentage Change over same period of previous year (%)</b>											
2015	-12.6	0.4	-2.6	2.5	-5.8	-41.5	-14.6	-6.0	-3.6	2.0	3.2
2016	-5.3	-2.0	-2.5	-0.3	-7.1	-17.8	8.5	-4.3	-7.0	-1.4	0.8
2017	5.8	0.6	1.7	0.7	2.7	29.5	3.7	3.1	4.5	-0.3	-0.1
2017											
Mar	8.6	0.8	1.9	0.3	4.1	50.3	11.5	4.9	4.5	-0.5	0.8
Apr	9.5	2.3	2.4	1.0	3.9	45.8	2.4	4.3	4.9	1.6	2.6
May	5.6	1.4	3.1	1.4	2.8	24.3	4.6	2.8	5.0	0.8	0.3
Jun	3.2	1.8	2.9	1.4	2.4	9.0	4.6	2.9	5.1	1.3	0.6
Jul	4.2	1.3	2.5	1.3	1.6	16.6	5.0	2.6	4.0	1.0	-0.6
Aug	5.0	1.4	2.6	2.1	3.1	20.7	-0.6	3.8	5.4	0.8	-0.6
Sep	4.9	0.8	2.2	1.7	4.4	22.6	-1.6	3.2	5.5	-0.1	-0.6
Oct	3.4	0.8	0.4	0.5	3.3	13.5	-0.4	3.0	5.8	-	-1.0
Nov	4.1	-0.9	-0.3	-0.3	0.4	24.3	-6.1	1.6	3.0	-1.7	-1.8
Dec	-0.4	-2.5	-1.4	-1.1	-2.4	6.9	-14.8	-0.2	1.4	-3.4	-2.7
2018											
Jan	-0.2	-2.6	-2.0	-1.9	-2.7	8.2	-14.7	-2.2	1.1	-3.1	-3.2
Feb	-0.1	-1.7	-1.6	-1.6	-3.2	5.4	-13.8	-0.2	1.6	-2.1	-2.8
Mar	1.4	-1.9	-3.2	-1.1	-1.5	13.3	-11.1	0.9	1.6	-2.7	-2.5



**Table 4 Export Price Index**

Section	All Items	Non-oil Items	Food & Live Animals	Beverages & Tobacco	Crude Materials	Mineral Fuels	Animal & Vegetable Oils, Fats & Waxes	Chemicals & Chemical Products	Manufactured Goods	Machinery & Transport Equipment	Misc. Manufactured Articles
Weights	10,000	7,395	124	87	60	2,605	8	1,344	381	4,595	796
<b>Index (2012=100)</b>											
2014	95.0	97.3	101.5	100.2	84.0	88.6	90.4	100.3	99.3	96.9	93.6
2015	88.5	99.8	103.6	107.2	74.8	56.3	84.6	97.5	96.3	101.2	97.8
2016	83.7	97.1	100.7	109.4	69.8	45.6	84.6	92.5	92.9	98.2	101.4
2017	86.1	96.2	98.6	107.5	80.2	57.3	89.0	93.3	95.4	96.1	102.0
2017											
Mar	86.5	97.6	98.6	108.8	83.4	55.2	93.5	95.0	95.3	97.6	102.8
Apr	86.4	96.9	100.0	108.5	81.5	56.4	92.0	94.0	95.1	96.8	102.8
May	86.0	97.0	99.7	107.8	79.8	54.9	89.7	93.6	95.1	97.1	102.5
Jun	84.4	95.9	99.4	108.5	78.1	51.9	87.7	92.4	94.0	95.9	102.0
Jul	84.4	95.5	97.2	106.8	77.3	52.9	86.9	91.7	94.7	95.5	101.8
Aug	84.4	94.9	96.9	106.7	78.9	54.9	85.9	91.5	95.4	94.6	101.3
Sep	85.0	94.6	96.8	105.9	79.7	57.9	85.8	91.8	95.9	94.1	101.0
Oct	86.1	95.5	98.0	105.9	79.2	59.3	87.0	93.1	96.2	95.1	101.3
Nov	86.6	95.0	98.6	105.7	78.5	62.7	87.1	93.0	95.7	94.5	101.1
Dec	86.5	94.7	98.2	105.2	78.8	63.4	86.6	93.8	95.3	93.9	100.2
2018											
Jan	86.8	94.4	99.1	104.9	79.4	65.2	85.8	94.4	96.2	93.3	99.5
Feb	86.2	94.4	98.0	105.4	79.8	63.1	85.5	94.6	96.7	93.2	99.1
Mar	86.0	94.1	97.6	105.3	79.4	62.8	85.6	94.1	95.9	93.0	99.2
<b>Percentage Change over same period of previous year (%)</b>											
2015	-6.9	2.6	2.1	7.0	-11.0	-36.4	-6.4	-2.8	-3.0	4.4	4.5
2016	-5.4	-2.7	-2.8	2.0	-6.7	-19.0	-	-5.2	-3.6	-3.0	3.6
2017	2.9	-0.9	-2.2	-1.7	14.9	25.7	5.2	0.9	2.7	-2.1	0.7
2017											
Mar	5.0	0.3	-3.3	0.3	26.1	37.9	14.2	2.8	2.5	-1.0	1.6
Apr	5.8	1.1	0.3	0.4	19.6	36.3	10.3	2.1	4.3	0.1	3.3
May	2.7	0.1	-0.5	-0.9	14.5	17.8	5.8	0.3	3.5	-0.6	1.7
Jun	1.4	-	-0.5	0.1	14.2	9.5	4.3	0.7	2.7	-0.7	1.2
Jul	2.6	0.3	-1.4	-1.8	13.0	15.8	2.6	1.6	3.6	-0.4	0.9
Aug	3.2	-	-1.9	-1.8	14.2	22.2	2.2	1.4	4.0	-0.8	0.2
Sep	2.4	-1.2	-1.6	-2.6	14.9	23.7	0.4	0.9	4.2	-2.5	-0.4
Oct	1.1	-1.5	-2.2	-4.0	10.9	15.1	0.5	2.0	3.7	-3.1	-0.4
Nov	0.8	-3.5	-3.3	-4.6	5.9	25.0	-0.1	-0.2	0.4	-5.3	-1.3
Dec	-2.4	-5.0	-4.3	-5.9	-1.6	10.0	-3.2	-2.1	-1.3	-6.5	-2.9
2018											
Jan	-2.3	-4.8	-0.7	-5.0	-4.4	9.5	-6.6	-0.2	-	-6.6	-4.4
Feb	-2.0	-3.9	-1.6	-4.3	-4.5	7.1	-8.9	-0.4	1.4	-5.3	-4.2
Mar	-0.7	-3.5	-1.0	-3.2	-4.8	13.7	-8.4	-0.9	0.6	-4.7	-3.5

### **NOTATIONS**

nes            not elsewhere specified  
-                nil or negligible

### **NOTES**

The Import and Export Price Indices report contains statistics that are the most recent available at the time of its preparation.

Some statistics, particularly those for the most recent time periods, are provisional and may be subject to revision in later issues.