



Import & Export Price Indices

March 2022

www.singstat.gov.sg

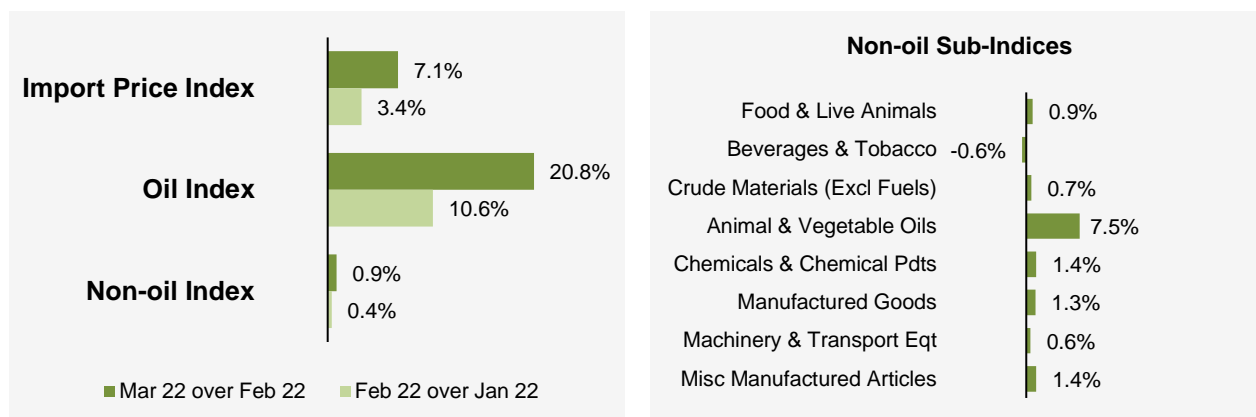
IMPORT AND EXPORT PRICE INDICES, March 2022
ISSN 2591-7463

© Department of Statistics, Ministry of Trade & Industry, Republic of Singapore

Reproducing or quoting any part of this publication is permitted, provided this publication is accredited as the source. Please refer to the SingStat Website Terms of Use (<http://www.singstat.gov.sg/terms-of-use>) for more details on the conditions of use of this publication.

Import Price Index (2018 = 100) March 2022

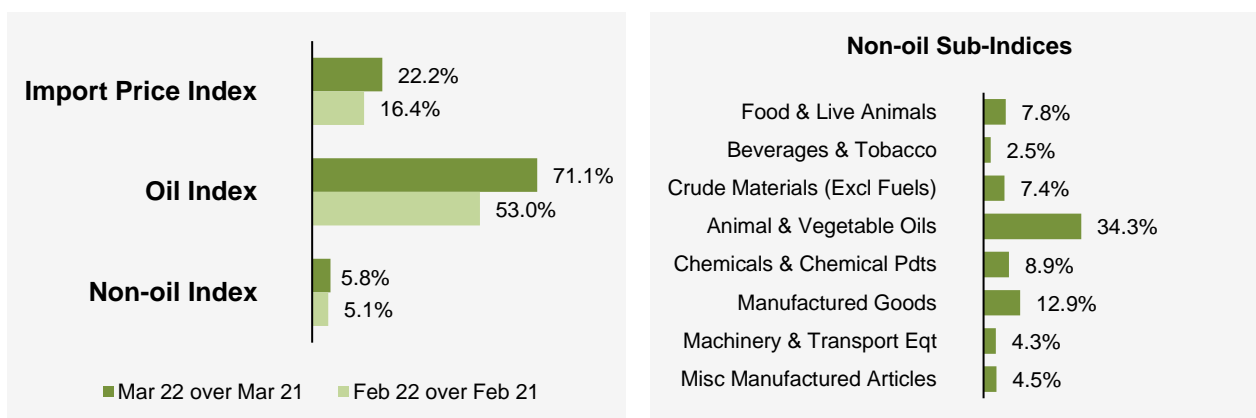
Month-on-Month Change



The Import Price Index rose 7.1% in March 2022, following the 3.4% increase in February 2022. The Oil index increased 20.8%, after the 10.6% rise in the previous month. The Non-oil index rose 0.9% in March 2022, after the 0.4% gain in February 2022.

Among the Non-oil sub-indices, increases were led by the Miscellaneous Manufactured Articles (1.4%) and Chemicals & Chemical Products (1.4%) indices, due primarily to higher prices of jewellery and organic chemicals respectively, and the Machinery & Transport Equipment (0.6%) index. The increases were partially moderated by decreases in the Beverages & Tobacco (-0.6%) index.

Year-on-Year Change

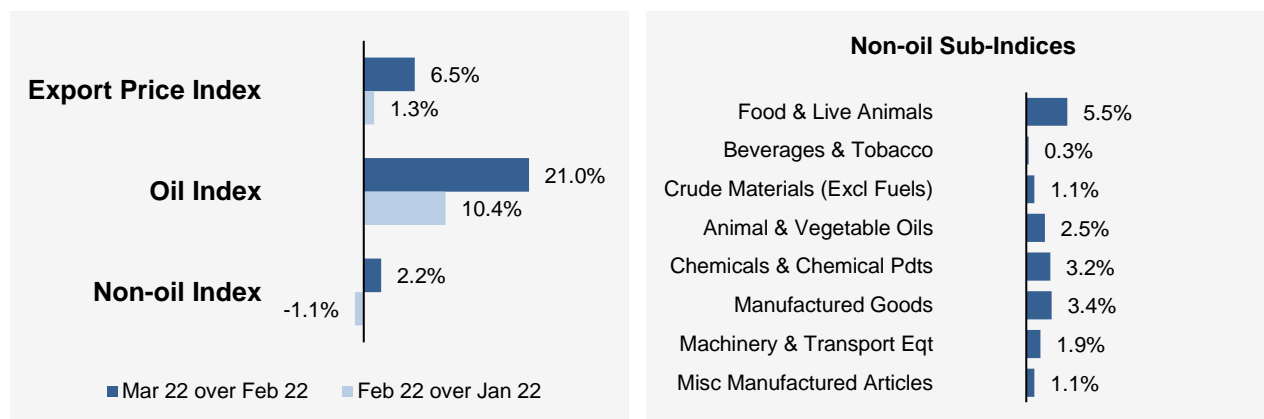


The Import Price Index rose 22.2% in March 2022 from a year ago, after the 16.4% increase in February 2022. The Oil and Non-oil indices increased 71.1% and 5.8% respectively.

All Non-oil sub-indices increased. Higher prices were registered for Animal & Vegetable Oils (34.3%), Manufactured Goods (12.9%), Chemicals & Chemical Products (8.9%), Food & Live Animals (7.8%), Crude Materials (7.4%), Miscellaneous Manufactured Articles (4.5%), Machinery & Transport Equipment (4.3%) and Beverages & Tobacco (2.5%).

Export Price Index (2018 = 100) March 2022

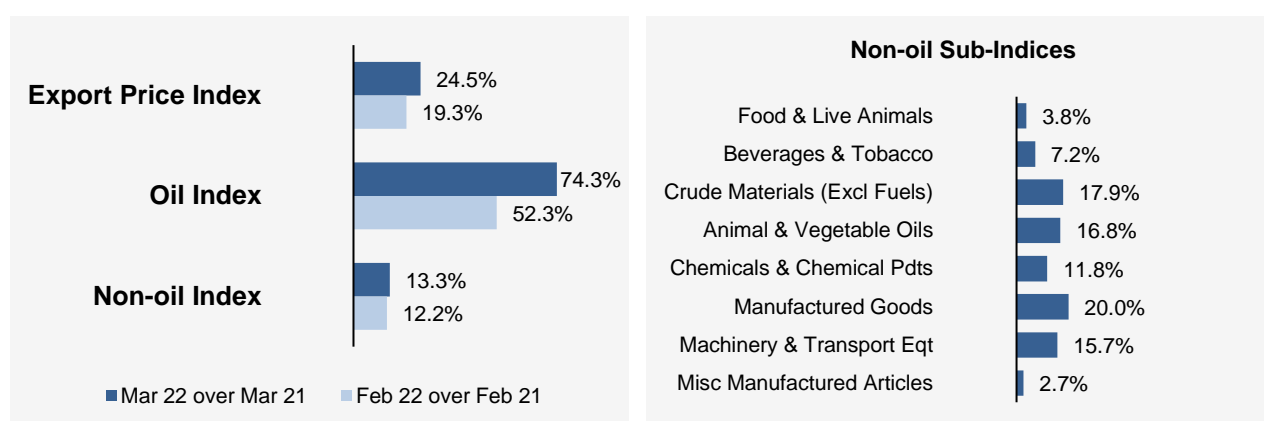
Month-on-Month Change



The Export Price Index increased 6.5% in March 2022, following the 1.3% rise in February 2022. The Oil index rose 21.0%, after the 10.4% increase in the previous month. The Non-oil index rose 2.2% in March 2022, reversing the 1.1% decrease in February 2022.

All Non-oil sub-indices rose. The increases were led by the Manufactured Goods (3.4%), Chemicals & Chemical Products (3.2%) and Machinery & Transport Equipment (1.9%) indices due mainly to higher prices of non-ferrous metals and organic chemicals, and electrical machinery apparatus respectively.

Year-on-Year Change



The Export Price Index increased 24.5% in March 2022 from a year ago, following the 19.3% gain in February 2022. The Oil and Non-oil indices went up 74.3% and 13.3% respectively.

All Non-oil sub-indices increased. Higher prices were registered for Manufactured Goods (20.0%), Crude Materials (17.9%), Animal & Vegetable Oils (16.8%), Machinery & Transport Equipment (15.7%), Chemicals & Chemical Products (11.8%), Beverages & Tobacco (7.2%), Food & Live Animals (3.8%) and Miscellaneous Manufactured Articles (2.7%).

Technical Note

The **Import Price Index (IPI)** is used primarily as an indicator to track the price trends of imported goods into Singapore. Prices of imports, valued at cif (cost, insurance and freight) are obtained monthly from major importers. The weighting pattern of the index is derived from import statistics for 2018.

The **Export Price Index (EPI)** measures changes in the price of all exports of merchandise from Singapore, including re-exports. In general, prices are obtained from major exporters of the selected commodities. Prices used in the index computation, are the prices of goods that physically leave Singapore's main ports of export; also termed as free on board prices. The weights of the index are derived from the distribution of export by commodity in 2018.

Index Formula

The 2018-based series is compiled using the Laspeyres formula where the price and weight reference periods are aligned to the year 2018. The geometric mean formula has been adopted in the computation of unweighted elementary aggregate price indices. The arithmetic mean formula is applied in compiling indices at higher levels of aggregation where weights of specific sub-indices are available.

Measurement of Changes in Price Indices

Change over previous month compares the index of the month with that of the preceding month. Such comparisons measure the change in the price index between two consecutive months. They serve as useful short-term indicators of the price movements.

Change over same period of previous year measures change in the index over a twelve-month period. Such comparisons compare the movement in the price index between similar months in two consecutive years.

Linking the Old 2012-Based Price Index Series to the New 2018-Based Price Index Series

The IPI and EPI have been rebased from base year 2012 to base year 2018. To facilitate comparison of the historical price indices across base years, the old 2012-based series are linked to the new 2018-based series by re-scaling them via a Linked Coefficient. The Linked Coefficient is the ratio of the annual 2018-based index in 2018 to the annual 2012-based index in 2018.

Example : Linking the old Iron & Steel Index series for IPI prior to 2018, to the 2018-based Iron & Steel Index (2018=100)

1) Calculate the linked coefficient

Year	Iron & Steel Index (2012=100)	Iron & Steel Index (2018=100)	Linked Coefficient
2018	93.4	100.0	$100.0 \div 93.4 = 1.071$

2) Re-scaling the old series to the 2018-based series using the Linked Coefficient

Year	Month	Iron & Steel Index (2012=100)	Iron & Steel Index (2018=100)
2016	Dec	84.0	$84.0 \times 1.071 = 90.0$
2017	Jan	85.6	$85.6 \times 1.071 = 91.7$

Linking Method for Maintaining the Old Index Reference Period

To continue the old 2012-based index series going forward in time, re-scale the new 2018-based index series to the old base year 2012 level, via a Linked Coefficient. The Linked Coefficient is the ratio of the annual 2012-based index in 2018 to the annual 2018-based index in 2018.

Example : Linking the new 2018-based Iron & Steel Index series for IPI to the 2012-based Iron & Steel Index (2012=100)

1) Calculate the linked coefficient

Year	Iron & Steel Index (2018=100)	Iron & Steel Index (2012=100)	Linked Coefficient
2018	100.0	93.4	$93.4 \div 100.0 = 0.934$

2) Re-scaling the new series to the 2012-based series using the Linked Coefficient

Year	Month	Iron & Steel Index (2018=100)	Iron & Steel Index (2012=100)
2019	Jan	98.6	$98.6 \times 0.934 = 92.1$
2019	Feb	102.4	$102.4 \times 0.934 = 95.6$

Index Revision

The indices may be revised when late returns and amendments received from respondents are incorporated.

Dissemination of Data

The Import and Export Price Indices are available on the SingStat Website (www.singstat.gov.sg/tablebuilder). Excel tables for this month's report are available at <https://www.singstat.gov.sg/publications/economy/import-export-price-indices> or through the QR code below:



Import Price Index (2018 = 100) March 2022

Chart 1: Index

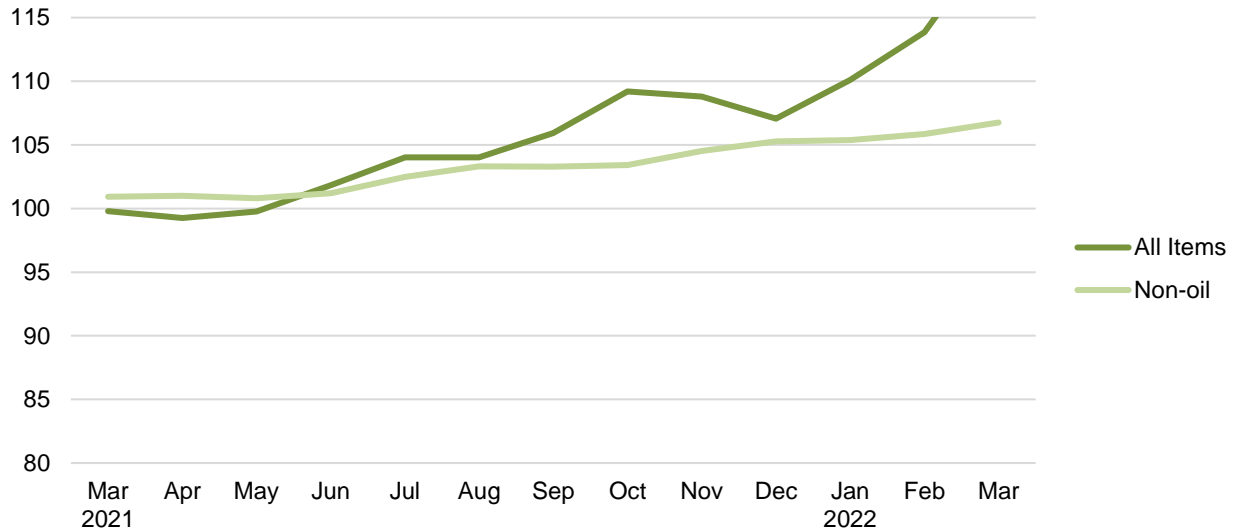


Chart 2: Month-on-Month Change

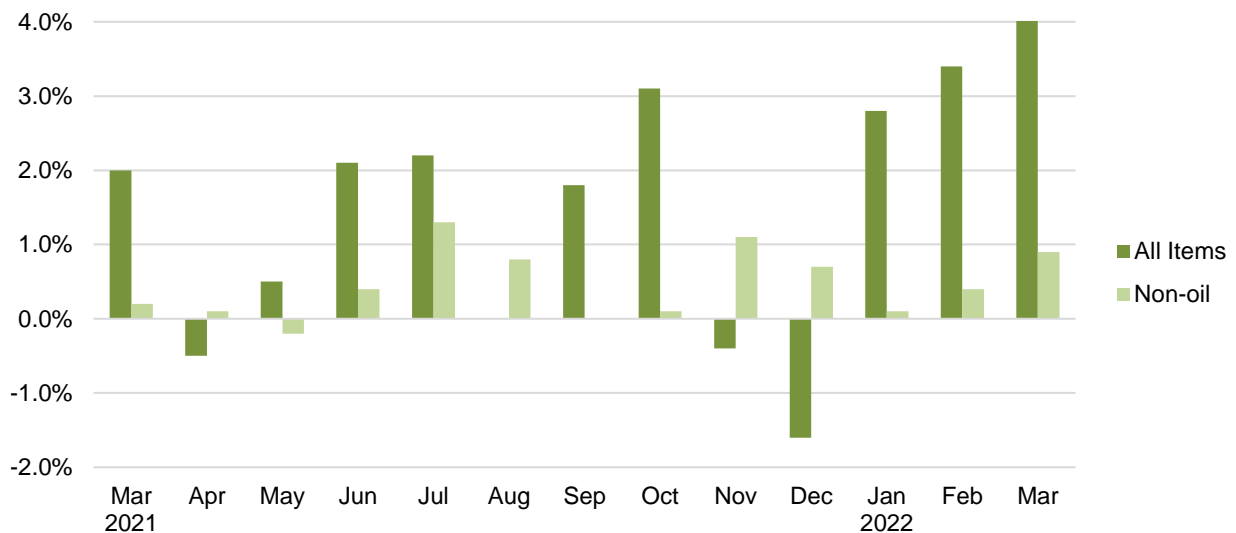
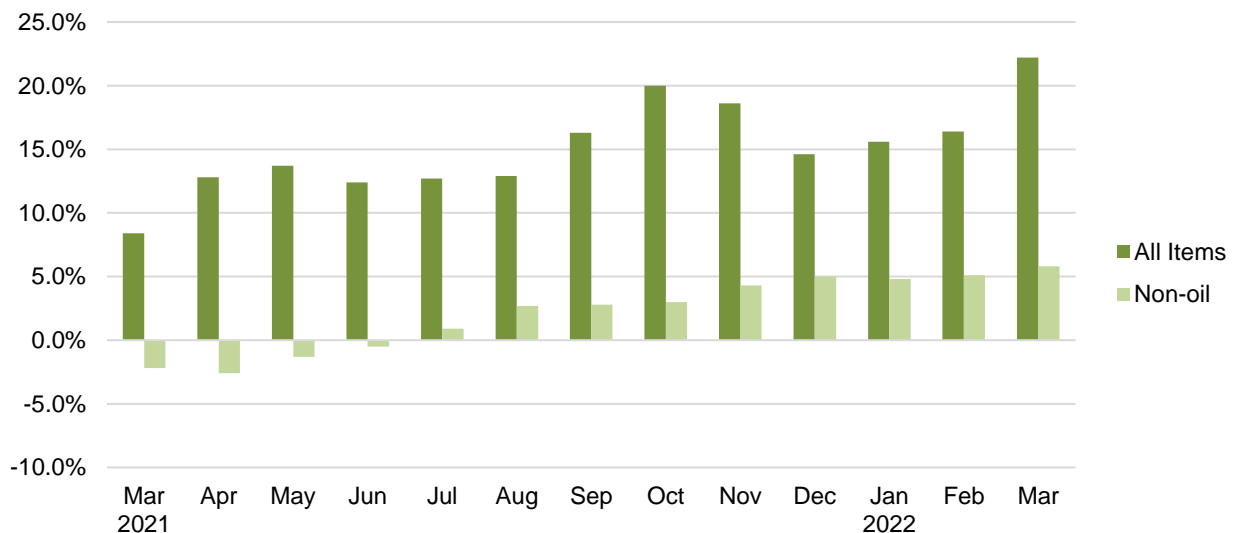


Chart 3: Year-on-Year Change



Export Price Index (2018 = 100) March 2022

Chart 4: Index

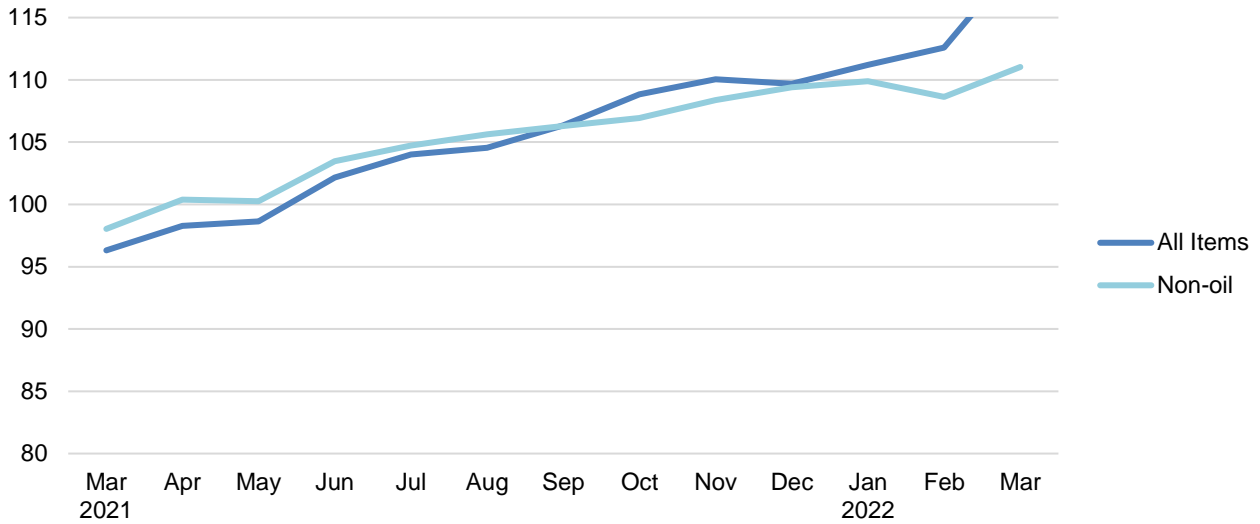


Chart 5: Month-on-Month Change

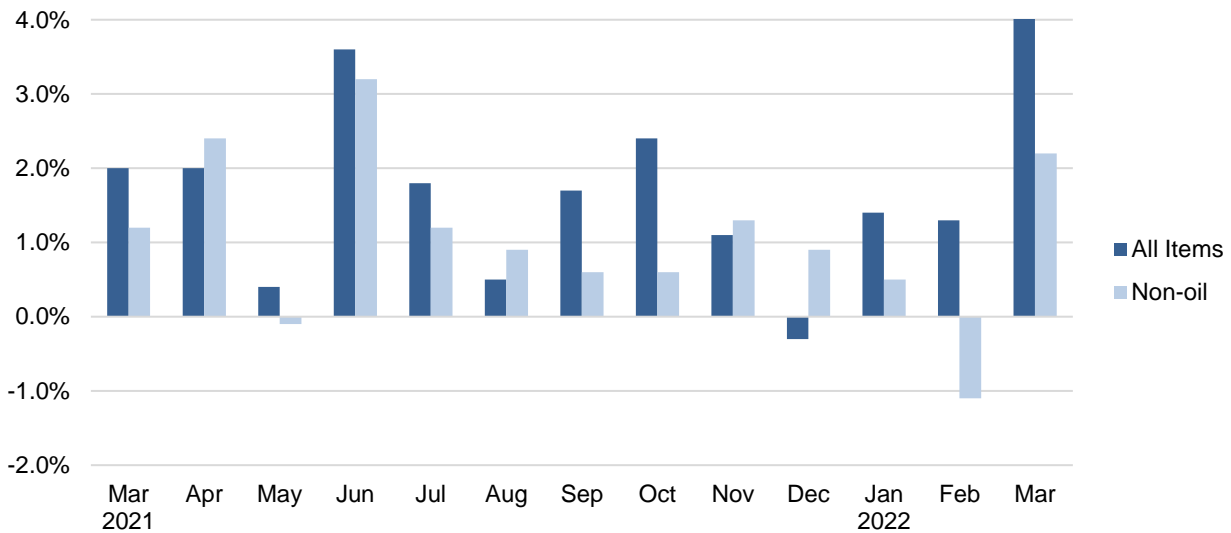


Chart 6: Year-on-Year Change

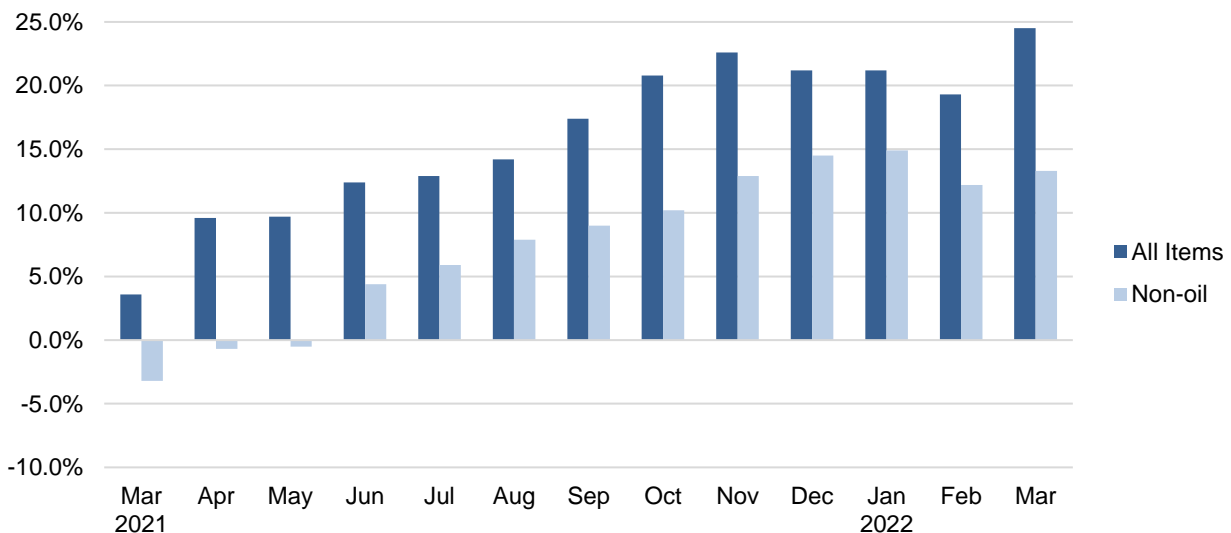


Table 1 Import Price Index

March 2022

Commodity section / division	Weights	Index (2018=100)			% Change		
					Feb 2022	Mar 2022	Mar 2022
		Jan 2022	Feb 2022	Mar 2022	Jan 2022	Feb 2022	Mar 2021
All Items	10,000	110.1	113.8	121.9	3.4	7.1	22.2
Non-oil Items	7,410	105.4	105.8	106.8	0.4	0.9	5.8
Food & Live Animals	247	110.4	110.5	111.5	0.1	0.9	7.8
Live animals	9	111.2	113.0	117.9	1.6	4.4	16.2
Meat & meat preparations	31	114.1	113.0	112.9	-1.0	-0.1	2.9
Dairy products & birds' eggs	30	122.8	125.2	131.1	1.9	4.7	23.1
Fish seafood & preparations	34	106.4	106.5	107.1	0.1	0.6	10.5
Cereals & cereal preparations	24	99.8	99.3	100.3	-0.5	1.0	0.8
Vegetables & fruit	48	112.7	112.7	110.4	-	-2.1	2.9
Sugar, sugar preparations & honey	9	119.3	122.7	124.8	2.9	1.7	14.6
Coffee, tea, cocoa, spices & manufactures	28	104.4	103.2	105.8	-1.1	2.5	9.7
Animal feeding stuff (excl unmilled cereals)	4	105.5	105.0	109.1	-0.4	3.9	6.6
Miscellaneous food preparations	31	106.9	106.6	106.4	-0.3	-0.2	2.2
Beverages & Tobacco	112	110.3	110.3	109.7	-	-0.6	2.5
Beverages	84	111.1	111.1	110.0	-	-1.0	1.8
Tobacco & manufactures	28	108.1	108.0	108.6	-0.1	0.6	4.4
Crude Materials (excl fuels)	84	108.5	108.9	109.6	0.4	0.7	7.4
Oil seeds & oleaginous fruits	2	120.4	120.3	124.3	-0.1	3.3	5.2
Crude rubber	19	93.5	93.1	93.7	-0.5	0.6	1.2
Cork & wood	3	118.5	123.3	128.0	4.0	3.8	35.4
Crude fertilizers & minerals	30	103.7	103.6	103.8	-0.1	0.2	1.9
Metalliferous ores & metal scrap	17	135.3	137.0	138.3	1.3	1.0	17.7
Crude animal & vegetable materials nes	13	100.9	101.1	101.1	0.2	-	5.9
Mineral Fuels, Lubricants & Related Materials	2,590	123.6	136.7	165.2	10.6	20.8	71.1
Petroleum & products & related materials	2,431	125.6	138.6	168.2	10.4	21.3	72.3
Gas	159	93.8	107.4	120.0	14.6	11.7	49.7
Animal & Vegetable Oils, Fats & Waxes	27	164.2	172.7	185.7	5.2	7.5	34.3
Fixed vegetable fats & oils	27	164.2	172.7	185.7	5.2	7.5	34.3
Chemicals & Chemical Products	888	108.1	108.4	109.9	0.3	1.4	8.9
Organic chemicals	216	106.2	107.3	110.2	1.0	2.7	11.9
Inorganic chemicals	35	109.3	111.3	112.8	1.9	1.3	10.3
Dyeing, tanning & colouring materials	33	108.4	109.3	109.6	0.8	0.3	5.5
Medicinal & pharmaceutical products	101	104.9	105.3	105.5	0.4	0.3	0.7
Essential oils & perfume; toilet cleaning products	147	110.7	111.2	111.7	0.4	0.4	4.0
Plastics in primary forms	164	112.5	111.1	112.4	-1.2	1.2	13.9
Plastics in non-primary forms	38	108.0	107.6	107.7	-0.4	0.1	5.7
Chemical materials & products nes	154	105.1	105.9	108.0	0.8	2.0	11.3
Manufactured Goods	505	116.3	117.0	118.5	0.5	1.3	12.9
Rubber manufactures nes	25	98.2	99.2	97.8	1.0	-1.4	-4.6
Paper manufactures	51	98.3	98.2	99.0	-	0.8	10.8
Textile manufactures	26	101.7	102.1	103.7	0.4	1.5	2.8
Non-metal mineral manufactures nes	60	112.4	113.1	113.9	0.6	0.7	9.3
Iron & steel	131	128.7	129.4	130.0	0.6	0.5	22.7
Non-ferrous metals	84	140.3	142.1	148.0	1.2	4.2	19.4
Manufactures of metals nes	128	103.4	103.3	104.1	-	0.7	5.0
Machinery & Transport Equipment	4,690	102.5	102.9	103.5	0.4	0.6	4.3
Power-generating machinery & equipment	526	119.6	119.9	120.3	0.2	0.3	6.4
Machinery specialized for particular industries	306	100.1	99.8	101.1	-0.3	1.3	1.6
Metal working machinery	23	107.0	106.9	107.3	-0.1	0.3	3.7
General industrial machinery	281	103.2	103.3	104.1	0.1	0.8	2.2
Office machines & data-processing machines	457	95.2	94.0	94.7	-1.2	0.7	0.8
Telecommunication apparatus	390	89.7	89.9	89.5	0.3	-0.4	3.7
Electrical machinery apparatus nes, electrical parts	2,542	102.6	103.6	104.2	0.9	0.6	5.4
Road vehicles	164	98.2	98.4	98.7	0.2	0.3	0.2
Miscellaneous Manufactured Articles	857	107.8	108.3	109.9	0.5	1.4	4.5
Prefab building, sanitary plumbing, lighting nes	12	105.7	105.7	105.7	-	-	-
Furniture, bedding, mattresses, cushions & others	26	109.6	109.8	110.2	0.2	0.4	1.3
Travel goods, handbags & similar containers	54	113.4	116.9	117.2	3.1	0.2	10.1
Articles of apparel & clothing accessories	79	105.5	105.7	106.5	0.2	0.8	5.4
Footwear	24	104.6	104.6	104.7	-	0.2	0.2
Professional scientific & controlling instruments	275	101.8	101.5	102.1	-0.2	0.5	-0.4
Photographic & optical goods nes; watches & clocks	106	110.7	111.0	111.2	0.3	0.2	4.8
Miscellaneous manufactured articles nes	283	112.4	113.3	117.1	0.8	3.4	8.4

Figures may not sum to total due to rounding.

Table 2 Export Price Index

March 2022

Commodity section / division	Weights	Index (2018=100)			% Change		
					Feb 2022	Mar 2022	Mar 2022
		Jan 2022	Feb 2022	Mar 2022	Jan 2022	Feb 2022	Mar 2021
All Items	10,000	111.2	112.6	119.9	1.3	6.5	24.5
Non-oil Items	8,022	109.9	108.6	111.0	-1.1	2.2	13.3
Food & Live Animals	236	96.6	93.3	98.5	-3.3	5.5	3.8
Dairy products & birds' eggs	5	47.5	48.1	47.9	1.3	-0.4	11.4
Fish seafood & preparations	9	96.0	97.4	102.1	1.5	4.8	22.3
Cereals & cereal preparations	7	99.1	101.0	101.6	2.0	0.6	7.0
Vegetables & fruit	8	99.3	98.7	97.5	-0.6	-1.3	5.8
Sugar, sugar preparations & honey	3	112.1	109.0	108.7	-2.8	-0.2	2.6
Coffee, tea, cocoa, spices & manufactures	26	113.4	113.3	115.1	-0.1	1.6	4.9
Animal feeding stuff (excl unmilled cereals)	7	91.8	93.4	94.1	1.7	0.8	-16.1
Miscellaneous food preparations	171	95.1	90.6	97.1	-4.8	7.3	3.5
Beverages & Tobacco	103	109.0	110.0	110.3	0.9	0.3	7.2
Beverages	75	111.7	113.2	113.3	1.3	0.1	9.4
Tobacco & manufactures	28	101.9	101.6	102.5	-0.3	0.9	1.3
Crude Materials (excl fuels)	91	105.3	106.3	107.5	0.9	1.1	17.9
Crude rubber	35	84.9	83.8	84.8	-1.4	1.3	10.6
Pulp and waste paper	26	107.0	110.6	110.7	3.4	0.1	21.1
Metalliferous ores & metal scrap	26	132.1	133.3	135.3	0.9	1.5	23.8
Crude animal & vegetable materials nes	4	100.4	100.1	105.0	-0.3	5.0	6.9
Mineral Fuels, Lubricants & Related Materials	1,978	116.5	128.7	155.7	10.4	21.0	74.3
Petroleum & products & related materials	1,978	116.5	128.7	155.7	10.4	21.0	74.3
Animal & Vegetable Oils, Fats & Waxes	5	132.0	127.9	131.2	-3.1	2.5	16.8
Fixed vegetable fats & oils	5	132.0	127.9	131.2	-3.1	2.5	16.8
Chemicals & Chemical Products	1,525	105.7	106.0	109.4	0.2	3.2	11.8
Organic chemicals	428	109.5	111.3	118.4	1.6	6.4	21.4
Inorganic chemicals	14	142.2	147.4	153.9	3.7	4.4	28.0
Dyeing, tanning & colouring materials	37	103.5	105.8	109.7	2.3	3.7	15.8
Medicinal & pharmaceutical products	250	96.3	96.0	96.0	-0.3	-	-1.1
Essential oils & perfume; toilet cleaning products	232	100.9	101.5	102.2	0.7	0.7	2.0
Plastics in primary forms	355	107.9	106.6	111.2	-1.2	4.3	15.8
Plastics in non-primary forms	29	112.0	111.9	113.9	-0.1	1.8	7.5
Chemical materials & products nes	181	108.3	107.6	108.2	-0.7	0.5	10.7
Manufactured Goods	318	120.1	122.6	126.8	2.1	3.4	20.0
Rubber manufactures nes	22	100.6	100.4	102.9	-0.2	2.5	4.2
Paper manufactures	41	104.4	102.3	102.2	-2.0	-0.1	4.8
Textile manufactures	19	97.1	96.8	95.8	-0.3	-1.0	-3.4
Non-metal mineral manufactures nes	14	97.5	97.2	97.7	-0.3	0.5	-
Iron & steel	66	136.5	142.9	147.6	4.7	3.3	43.0
Non-ferrous metals	67	158.5	165.6	180.1	4.5	8.8	42.6
Manufactures of metals nes	89	99.6	99.5	99.6	-0.1	0.1	-0.6
Machinery & Transport Equipment	4,836	112.9	110.7	112.9	-1.9	1.9	15.7
Power-generating machinery & equipment	418	99.8	99.6	100.7	-0.2	1.1	1.2
Machinery specialized for particular industries	437	106.5	106.3	106.9	-0.2	0.6	13.2
Metal working machinery	25	99.0	99.5	99.6	0.5	0.1	0.6
General industrial machinery	212	103.7	103.7	103.8	-	0.1	1.3
Office machines & data-processing machines	467	101.3	101.5	102.1	0.2	0.6	7.4
Telecommunication apparatus	366	93.4	92.5	91.0	-0.9	-1.6	1.1
Electrical machinery apparatus nes, electrical parts	2,814	121.2	117.6	121.2	-3.0	3.0	23.2
Road vehicles	98	109.5	109.2	107.8	-0.2	-1.3	2.2
Miscellaneous Manufactured Articles	908	101.2	100.9	102.0	-0.3	1.1	2.7
Prefab building, sanitary plumbing, lighting nes	3	114.2	114.7	114.9	0.4	0.2	-2.9
Furniture, bedding, mattresses, cushions & others	5	104.6	104.4	105.7	-0.2	1.2	-
Travel goods, handbags & similar containers	37	98.5	103.5	104.6	5.1	1.1	4.5
Articles of apparel & clothing accessories	40	114.4	111.3	109.7	-2.7	-1.4	-0.5
Footwear	14	114.1	113.4	114.5	-0.6	0.9	24.3
Professional scientific & controlling instruments	365	92.0	91.9	92.4	-0.1	0.6	3.1
Photographic & optical goods nes; watches & clocks	98	106.0	106.0	105.6	0.1	-0.4	2.9
Miscellaneous manufactured articles nes	345	107.6	106.9	109.2	-0.7	2.2	1.9

Figures may not sum to total due to rounding.

Table 3 Import Price Index

Section	All Items	Non-oil Items	Food & Live Animals	Beverages & Tobacco	Crude Materials	Mineral Fuels	Animal & Vegetable Oils, Fats & Waxes	Chemicals & Chemical Products	Manufactured Goods	Machinery & Transport Equipment	Misc. Manufactured Articles
Weights	10,000	7,410	247	112	84	2,590	27	888	505	4,690	857
Index (2018=100)											
2018	100.0	100.0	100.0	100.0	100.0	100.0	100.0	100.0	100.0	100.0	100.0
2019	99.0	100.9	101.5	100.4	101.2	93.4	90.4	98.6	99.9	101.3	102.0
2020	92.0	101.3	102.9	97.9	101.8	65.6	103.1	97.4	99.8	101.3	106.0
2021	102.7	102.3	105.4	106.4	104.7	104.0	149.6	103.6	109.9	99.9	106.4
2021											
Mar	99.8	100.9	103.5	107.1	102.0	96.5	138.2	101.0	104.9	99.2	105.2
Apr	99.3	101.0	103.4	106.9	102.7	94.3	143.3	102.0	105.9	98.9	105.5
May	99.8	100.8	103.9	107.4	103.0	96.8	151.3	102.8	107.4	98.2	105.7
Jun	101.8	101.2	105.0	107.2	105.4	103.7	148.4	102.8	109.6	98.4	106.1
Jul	104.0	102.5	105.6	107.6	105.6	108.4	152.1	104.8	112.1	99.6	106.9
Aug	104.0	103.3	106.1	107.4	107.0	106.1	154.3	105.5	112.6	100.6	107.2
Sep	105.9	103.3	105.8	107.0	106.4	113.4	155.6	105.5	113.6	100.5	106.9
Oct	109.2	103.4	106.7	104.3	106.4	125.7	162.8	106.6	114.9	100.3	106.9
Nov	108.8	104.5	107.5	103.8	108.0	121.0	167.1	107.5	115.9	101.7	107.1
Dec	107.1	105.3	109.6	103.7	110.5	112.2	167.1	107.4	116.7	102.5	107.9
2022											
Jan	110.1	105.4	110.4	110.3	108.5	123.6	164.2	108.1	116.3	102.5	107.8
Feb	113.8	105.8	110.5	110.3	108.9	136.7	172.7	108.4	117.0	102.9	108.3
Mar	121.9	106.8	111.5	109.7	109.6	165.2	185.7	109.9	118.5	103.5	109.9
Percentage Change over same period of previous year (%)											
2019	-1.0	0.9	1.5	0.4	1.2	-6.6	-9.6	-1.4	-0.1	1.3	2.0
2020	-7.0	0.3	1.4	-2.5	0.6	-29.8	14.0	-1.2	-0.2	-	3.8
2021	11.6	1.0	2.4	8.7	2.9	58.5	45.1	6.3	10.1	-1.4	0.4
2021											
Mar	8.4	-2.2	0.2	3.0	-1.5	60.2	39.7	2.1	4.4	-4.2	-1.5
Apr	12.8	-2.6	-1.1	2.7	0.7	118.5	48.1	4.5	5.4	-5.2	-2.3
May	13.7	-1.3	-0.5	10.6	1.1	107.9	60.6	6.4	7.2	-4.1	-2.0
Jun	12.4	-0.5	2.0	10.5	3.9	76.3	53.6	6.5	10.1	-3.6	-0.6
Jul	12.7	0.9	2.2	14.5	3.6	64.4	55.1	6.9	12.4	-1.9	0.2
Aug	12.9	2.7	3.2	14.5	6.5	56.2	51.5	8.0	13.5	0.2	0.7
Sep	16.3	2.8	3.4	13.0	5.1	76.4	49.5	8.5	14.5	0.4	0.5
Oct	20.0	3.0	5.2	9.7	4.5	96.0	50.2	9.6	15.5	0.2	1.1
Nov	18.6	4.3	5.6	9.3	6.4	79.1	47.4	10.4	15.6	2.0	1.6
Dec	14.6	5.0	7.2	7.8	8.9	51.6	39.2	10.1	15.9	2.8	3.0
2022											
Jan	15.6	4.8	6.6	2.9	7.8	54.6	31.6	9.9	14.5	2.9	2.3
Feb	16.4	5.1	5.8	3.1	9.6	53.0	33.0	9.1	13.2	3.7	2.3
Mar	22.2	5.8	7.8	2.5	7.4	71.1	34.3	8.9	12.9	4.3	4.5

Table 4 Export Price Index

Section	All Items	Non-oil Items	Food & Live Animals	Beverages & Tobacco	Crude Materials	Mineral Fuels	Animal & Vegetable Oils, Fats & Waxes	Chemicals & Chemical Products	Manu- factured Goods	Machinery & Transport Equipment	Misc. Manu- factured Articles
Weights	10,000	8,022	236	103	91	1,978	5	1,525	318	4,836	908
Index (2018=100)											
2018	100.0	100.0	100.0	100.0	100.0	100.0	100.0	100.0	100.0	100.0	100.0
2019	98.6	100.1	97.6	102.6	90.6	92.4	97.1	94.8	98.7	101.8	101.9
2020	91.7	98.6	94.7	103.4	81.0	63.7	101.9	91.1	97.9	100.6	103.2
2021	102.1	103.0	95.1	105.4	98.9	98.3	119.4	100.3	110.5	104.4	99.7
2021											
Mar	96.3	98.0	94.8	102.9	91.1	89.3	112.4	97.8	105.7	97.5	99.3
Apr	98.3	100.4	96.1	105.3	94.2	89.6	116.0	99.4	107.4	100.7	98.9
May	98.6	100.3	95.9	104.6	97.2	92.0	117.8	100.0	111.1	100.0	99.3
Jun	102.2	103.5	94.6	104.5	96.5	96.9	117.9	100.3	110.6	105.3	99.5
Jul	104.0	104.7	95.1	106.1	102.8	101.1	120.5	102.0	112.5	106.4	99.9
Aug	104.5	105.6	93.5	107.2	103.1	100.1	120.6	101.6	113.0	108.0	100.3
Sep	106.3	106.3	95.9	105.7	102.7	106.5	124.6	101.9	113.2	109.2	99.0
Oct	108.8	106.9	95.6	105.6	106.7	116.5	126.7	103.1	115.2	109.5	99.7
Nov	110.0	108.4	97.4	107.7	108.2	116.7	127.6	104.4	115.4	111.1	101.1
Dec	109.7	109.4	95.2	106.8	109.2	110.9	133.7	105.0	115.8	112.6	101.2
2022											
Jan	111.2	109.9	96.6	109.0	105.3	116.5	132.0	105.7	120.1	112.9	101.2
Feb	112.6	108.6	93.3	110.0	106.3	128.7	127.9	106.0	122.6	110.7	100.9
Mar	119.9	111.0	98.5	110.3	107.5	155.7	131.2	109.4	126.8	112.9	102.0
Percentage Change over same period of previous year (%)											
2019	-1.4	0.1	-2.4	2.6	-9.4	-7.6	-2.9	-5.2	-1.3	1.8	1.9
2020	-7.0	-1.5	-3.0	0.8	-10.6	-31.0	4.9	-4.0	-0.8	-1.2	1.3
2021	11.3	4.5	0.4	1.9	22.1	54.3	17.2	10.1	12.9	3.8	-3.3
2021											
Mar	3.6	-3.2	-1.3	-3.1	10.5	50.3	1.5	4.8	8.6	-6.0	-5.9
Apr	9.6	-0.7	3.3	-2.0	14.9	106.1	8.9	7.8	11.2	-3.1	-6.4
May	9.7	-0.5	1.4	-1.9	16.5	100.7	11.8	10.4	14.7	-3.7	-5.8
Jun	12.4	4.4	0.8	0.7	16.4	67.9	15.0	11.6	14.0	3.6	-4.4
Jul	12.9	5.9	-	3.9	29.9	57.1	21.6	13.9	14.8	4.9	-4.0
Aug	14.2	7.9	-1.2	5.1	32.7	52.2	22.5	13.5	15.1	8.2	-3.7
Sep	17.4	9.0	-1.1	4.5	29.7	70.3	26.7	13.7	15.1	10.2	-4.5
Oct	20.8	10.2	2.5	5.2	34.7	87.5	29.9	13.8	17.3	11.2	-1.9
Nov	22.6	12.9	3.6	6.9	36.4	81.1	30.7	14.3	16.5	14.9	0.4
Dec	21.2	14.5	3.4	5.6	34.3	58.7	31.6	14.2	14.9	17.5	1.5
2022											
Jan	21.2	14.9	3.9	6.1	23.3	53.7	24.0	13.7	17.9	18.2	1.6
Feb	19.3	12.2	-0.2	4.0	19.0	52.3	17.3	12.1	17.8	14.4	1.9
Mar	24.5	13.3	3.8	7.2	17.9	74.3	16.8	11.8	20.0	15.7	2.7

NOTATIONS

- nes not elsewhere specified
- nil or negligible

NOTES

The Import and Export Price Indices report contains statistics that are the most recent available at the time of its preparation.

Some statistics, particularly those for the most recent time periods, are provisional and may be subject to revision in later issues.

SINGAPORE DEPARTMENT OF STATISTICS COMMUNICATIONS & INFORMATION SERVICES

Singapore Department of Statistics (DOS) offers official statistics, data insights, visualisations and statistical resources through user-friendly platforms.



SingStat Website

Visit this convenient gateway to access latest data and statistical information.

Data across the six major themes of Economy, Industry, Trade & Investment, Population, Households and Society, covering some 200 topics such as Gross Domestic Product, Consumer Price Index, Retail Sales and Food & Beverage Services Indices, Producer Price Indices, Business Expectations, Business Receipts Index, Trade in Services, Direct Investment, Population Indicators, Household Income, Household Expenditure, Deaths and Life Expectancy, Births and Fertility, Marriages and Divorces, and more.

Publications

- Information Papers which highlight conceptual and methodological changes and improvements in official statistics.
- Occasional Papers which present statistical trends and observations on important social and economic issues to stimulate discussion and research.
- eBook of Statistics** which consolidates latest information and resources on key economic and socio-demographic domains.
- Singapore in Figures** which allows exploration of key economic and socio-demographic statistics through interactive dashboards.
- Statistics Singapore Newsletter** which features articles on latest key statistical activities, recent survey findings and methodological improvements.

Visualisations such as infographics and interactive dashboards with latest data, and videos to explain data and statistical concepts.

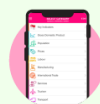
Data for Businesses with data tools to empower data-driven business decisions, giving firms insights on their customers, industries and business performance.

Advance Release Calendar providing dates of upcoming data releases in the next six months.



SingStat Table Builder

Access for free over 2,000 data tables across various economic and socio-demographic domains from 70 public sector agencies. Watch the [video](#) to find out how you can easily access and customise data tables.



SingStat Mobile App

Download the free app for fast and convenient access to commonly used statistics from your mobile devices. More than 200 charts are available across 28 data categories for easy access to visualise data trends.



SingStat Express

Subscribe to receive alerts on the latest press releases, occasional/ information papers and newsletters.



Find us on social media!



Telegram



YouTube



LinkedIn

For statistical enquiries, you may reach us at:

✉ email: info@singstat.gov.sg or submit the [Data Request Form](#)

☎ phone: 1800-323 8118* (Local users) or (65) 6332 7738 (Overseas users)

* Calls from mobile telephone lines to 1800 local toll-free number may be subject to mobile airtime charges as imposed by the relevant mobile service provider.