

# IMPORT & EXPORT PRICE INDICES

May 2018

**IMPORT AND EXPORT PRICE INDICES, May 2018**  
**ISSN 2591-7463**

**© Department of Statistics, Ministry of Trade & Industry, Republic of Singapore**

Reproducing or quoting any part of this publication is permitted, provided this publication is accredited as the source. Please refer to the Statistics Singapore Website Terms of Use (<http://www.singstat.gov.sg/terms-of-use>) for more details on the conditions of use of this publication.

Statistical activities conducted by the Singapore Department of Statistics are governed by the provisions of the Statistics Act (Cap. 317). The Act guarantees the confidentiality of information collected from individuals and companies. It spells out the legislative authority and responsibility of the Chief Statistician. The Act is available in the Department's Website ([www.singstat.gov.sg](http://www.singstat.gov.sg)).

# IMPORT PRICE INDICES (2012 = 100)

**May 2018**

## Import Price Index

### *Change over previous month*

The Import Price Index rose 3.8 per cent in May 2018, extending the 1.1 per cent increase in April 2018. The Oil index climbed 12.0 per cent, after the 5.5 per cent increase in the previous month, due mainly to higher prices of diesel fuel & fuel oils and crude petroleum. The Non-oil index rose 1.1 per cent in May 2018, in contrast to the 0.3 per cent decline in April.

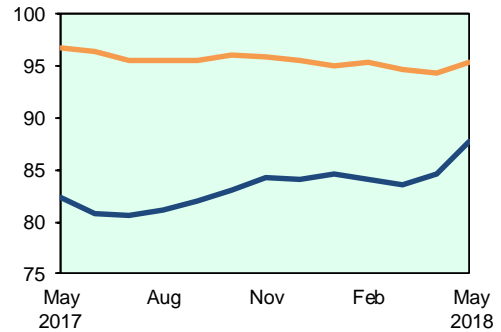
Among the Non-oil sub-indices, increases were led by the Manufactured Goods (1.7 per cent) and Machinery & Transport Equipment (1.2 per cent) indices, attributed mainly to higher prices of iron & steel products and processors respectively. The increases were partially offset by the decline in the Animal & Vegetable Oils (-0.1 per cent) index.

### *Change over same period of previous year*

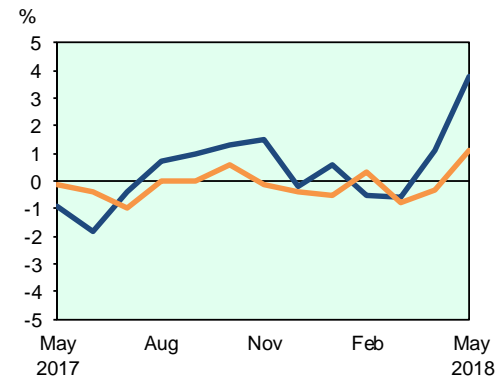
The Import Price Index rose 6.6 per cent in May 2018 from a year ago, following the 1.7 per cent increase in April 2018. The Oil index climbed 36.2 per cent, while the Non-oil index declined 1.5 per cent.

For the Non-oil sub-indices, lower prices of Animal & Vegetable Oils (-10.2 per cent), Machinery & Transport Equipment (-3.1 per cent), Food & Live Animals (-2.2 per cent), Miscellaneous Manufactured Articles (-1.5 per cent) and Beverages & Tobacco (-1.0 per cent) were partially moderated by higher prices of Manufactured Goods (5.3 per cent), Chemicals & Chemical Products (3.2 per cent) and Crude Materials (0.7 per cent).

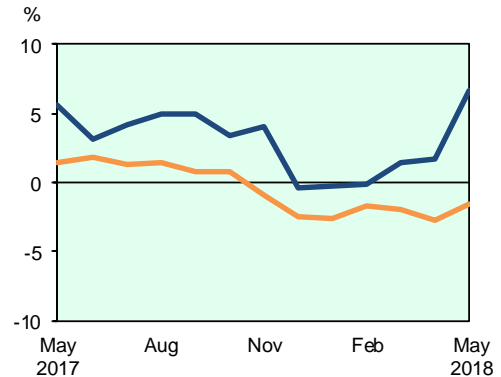
Import Price Index (2012=100) — Overall — Non-oil



Change over previous month



Change over same period of previous year



# EXPORT PRICE INDICES (2012 = 100)

May 2018

## Export Price Index

### *Change over previous month*

The Export Price Index rose 2.6 per cent in May 2018, following the 1.2 per cent increase in April 2018. The Oil index rose 9.2 per cent, extending the 6.1 per cent increase in the previous month, due to higher prices of bunker fuel and high speed diesel fuel. The Non-oil index rose 0.9 per cent, after the 0.1 per cent increase in April 2018.

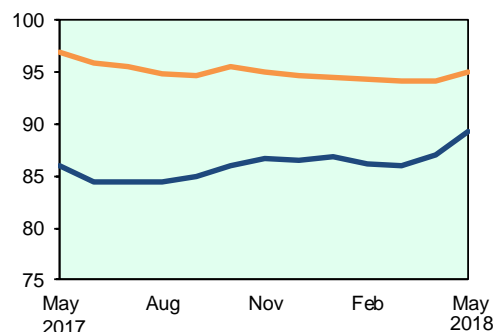
All Non-oil sub-indices were higher. Leading the increases were the Chemicals & Chemical Products (1.1 per cent) and Machinery & Transport Equipment (1.0 per cent) indices, due mainly to higher prices of polycarbonates and integrated circuits respectively.

### *Change over same period of previous year*

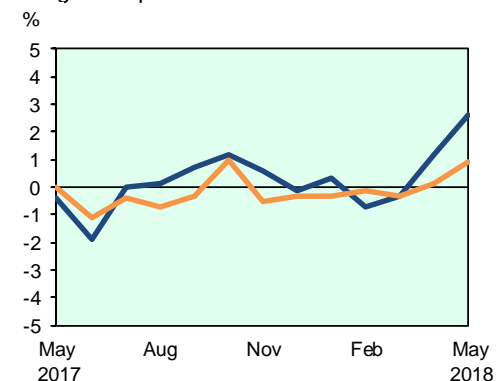
The Export Price Index increased 3.8 per cent in May 2018 over the previous year, following the 0.7 per cent increase in April 2018. The Oil index climbed 32.7 per cent while the Non-oil index fell 2.0 per cent.

Among the Non-oil sub-indices, declines in the Animal & Vegetable Oils (-4.0 per cent), Machinery & Transport Equipment (-3.2 per cent), Food & Live Animals (-2.8 per cent), Miscellaneous Manufactured Articles (-2.8 per cent) and Beverages & Tobacco (-2.0 per cent) indices were partially moderated by increases in the Manufactured Goods (2.6 per cent), Chemicals & Chemical Products (1.6 per cent) and Crude Materials (0.6 per cent) indices.

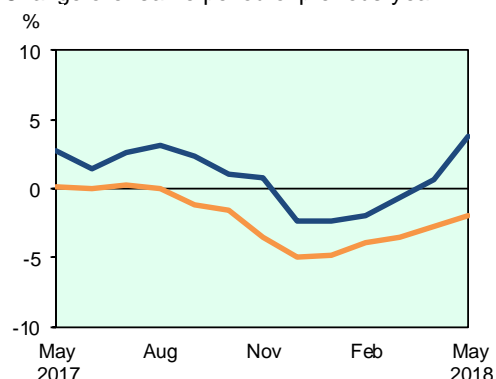
Export Price Index  
(2012=100) — Overall — Non-oil



Change over previous month



Change over same period of previous year



## TECHNICAL NOTE

The *Import Price Index (IPI)* is used primarily as an indicator to track the price trends of imported goods into Singapore. Prices of imports, valued at cif (cost, insurance and freight) are obtained monthly from major importers. The weighting pattern of the index is derived from import statistics for 2012.

The *Export Price Index (EPI)* measures changes in the price of all exports of merchandise from Singapore, including re-exports. In general, prices are obtained from major exporters of the selected commodities. Prices used in the index computation, are the prices of goods that physically leave Singapore's main ports of export; also termed as free on board prices. The weights of the index are derived from the distribution of export by commodity in 2012.

### Index Formula

The 2012-based series is compiled using the Laspeyres formula where the price and weight reference periods are aligned to the year 2012. The geometric mean (GM) formula has been adopted in the computation of unweighted elementary aggregate price indices. The arithmetic mean (AM) formula is applied in compiling indices at higher levels of aggregation where weights of specific sub-indices are available

An Information Paper on the Rebasing of Import and Export Price Indices (2012=100) is available on the department's website at <https://www.singstat.gov.sg/ppi#Producer-and-International-Trade-Prices>.

### Measurement of Changes in Price Indices

*Change over previous month* compares the index of the month with that of the preceding month. Such comparisons measure the change in the price index between two consecutive months. They serve as useful short-term indicators of the price movements. As the price indices are found not to be seasonal, it is not necessary for seasonal adjustment to be carried out.

*Change over same period of previous year* measures change in the index over a twelve-month period. Such comparisons compare the movement in the price index between similar months in two consecutive years.

### Dissemination of Data

The Import and Export Price Indices are available on the SingStat Website ([www.singstat.gov.sg/tablebuilder](http://www.singstat.gov.sg/tablebuilder)).

**Table 1 Import Price Index**

**May 2018**

Commodity section / division	Weights	Index (2012=100)			% Change		
		Mar 2018	Apr 2018	May 2018	Apr 2018	May 2018	May 2018
					Mar 2018	Apr 2018	May 2017
<b>All Items</b>	<b>10,000</b>	<b>83.6</b>	<b>84.5</b>	<b>87.8</b>	<b>1.1</b>	<b>3.8</b>	<b>6.6</b>
<b>Non-oil Items</b>	<b>6,684</b>	<b>94.6</b>	<b>94.3</b>	<b>95.3</b>	<b>-0.3</b>	<b>1.1</b>	<b>-1.5</b>
Food & Live Animals	215	97.2	97.2	98.1	-	0.8	-2.2
Live animals	9	94.6	94.7	95.7	0.2	1.0	-3.4
Meat & meat preparations	26	96.7	98.4	98.7	1.8	0.3	-7.0
Dairy products & birds' eggs	28	89.3	88.5	91.3	-0.9	3.2	-3.6
Fish seafood & preparations	28	111.8	111.8	112.6	-	0.7	1.9
Cereals & cereal preparations	21	99.5	100.2	101.5	0.7	1.3	10.3
Vegetables & fruit	37	102.7	101.2	102.4	-1.4	1.2	-2.6
Sugar, sugar preparations & honey	12	78.7	78.1	76.7	-0.8	-1.8	-21.9
Coffee, tea, cocoa, spices & manufactures	28	91.3	90.6	90.7	-0.8	0.1	-6.1
Animal feeding stuff (excl unmilled cereals)	3	108.4	108.1	108.4	-0.3	0.3	2.9
Miscellaneous food preparations	23	95.2	97.3	97.4	2.2	0.1	4.5
Beverages & Tobacco	86	103.8	103.9	104.2	-	0.3	-1.0
Beverages	66	101.9	101.1	101.1	-0.9	0.1	-2.4
Tobacco & manufactures	20	109.9	113.0	114.1	2.8	1.0	3.3
Crude Materials (excl fuels)	83	83.7	83.9	84.4	0.3	0.5	0.7
Hides, skins & furskins raw	1	85.1	85.1	87.0	-	2.2	-5.1
Oil seeds & oleaginous fruits	1	92.7	92.7	95.1	0.1	2.5	-1.8
Crude rubber	17	58.7	58.6	58.7	-0.2	0.3	-11.8
Cork & w ood	5	90.2	90.9	91.3	0.7	0.5	0.9
Textile fibres & their w astes	3	90.0	90.2	90.8	0.2	0.7	-10.8
Crude fertilizers & minerals	26	79.4	79.7	79.6	0.4	-0.2	-1.0
Metalliferous ores & metal scrap	21	95.6	95.9	97.2	0.3	1.4	10.2
Crude animal & vegetable materials nes	9	107.0	107.4	107.5	0.4	0.1	4.0
Mineral Fuels, Lubricants & Related Materials	3,316	61.4	64.8	72.5	5.5	12.0	36.2
Petroleum & products & related materials	3,152	60.7	64.1	71.8	5.6	12.0	37.0
Gas	164	75.7	78.0	86.6	3.0	11.0	24.3
Animal & Vegetable Oils, Fats & Waxes	37	72.7	72.3	72.2	-0.6	-0.1	-10.2
Fixed vegetable fats & oils	36	72.3	71.9	71.8	-0.6	-0.1	-10.5
Animal & vegetable oils, fats & w axes nes	1	83.6	83.6	84.0	-	0.5	-2.5
Chemicals & Chemical Products	694	92.2	92.7	93.4	0.6	0.8	3.2
Organic chemicals	188	85.9	87.6	88.7	2.0	1.2	9.7
Inorganic chemicals	34	100.2	102.9	103.6	2.7	0.7	22.8
Dyeing, tanning & colouring materials	28	87.9	88.0	87.6	0.2	-0.5	-0.6
Medicinal & pharmaceutical products	70	87.2	87.1	86.9	-0.2	-0.2	1.3
Essential oils & perfume; toilet cleaning products	75	106.0	105.1	105.0	-0.9	-0.1	2.4
Plastics in primary forms	147	94.8	94.4	95.8	-0.4	1.5	3.2
Plastics in non-primary forms	31	100.2	100.3	100.9	0.1	0.7	0.1
Chemical materials & products nes	121	89.7	90.4	91.1	0.8	0.8	-6.9
Manufactured Goods	635	93.2	93.9	95.5	0.7	1.7	5.3
Rubber manufactures nes	32	91.8	91.6	92.3	-0.2	0.8	-1.9
Paper manufactures	50	104.1	105.4	106.5	1.2	1.1	5.0
Textile manufactures	31	99.0	99.2	100.0	0.2	0.8	-1.5
Non-metal mineral manufactures nes	83	93.3	93.1	93.9	-0.2	0.8	-1.5
Iron & steel	179	89.9	91.4	93.9	1.6	2.8	8.6
Non-ferrous metals	116	92.0	92.5	93.9	0.6	1.6	10.7
Manufactures of metals nes	144	93.6	93.9	95.4	0.4	1.6	4.8
Machinery & Transport Equipment	4,205	94.6	93.9	94.9	-0.8	1.2	-3.1
Pow er-generating machinery & equipment	298	123.7	123.7	125.4	-	1.5	0.7
Machinery specialized for particular industries	352	92.8	92.3	93.1	-0.5	0.8	-1.8
Metal w orking machinery	31	95.0	94.6	95.0	-0.4	0.4	-0.6
General industrial machinery	328	99.5	99.3	99.5	-0.2	0.1	-1.8
Office machines & data-processing machines	495	97.9	97.9	98.8	-	0.9	-2.0
Telecommunication apparatus	422	68.6	67.8	68.6	-1.2	1.2	-4.0
Electrical machinery apparatus nes, electrical parts	2,116	93.8	92.6	94.0	-1.3	1.4	-5.0
Road vehicles	163	102.5	102.3	103.1	-0.2	0.8	3.5
Miscellaneous Manufactured Articles	729	99.1	99.3	99.8	0.2	0.6	-1.5
Prefab building, sanitary plumbing, lighting nes	16	101.5	101.6	102.3	0.1	0.7	0.7
Furniture, bedding, mattresses, cushions & others	25	101.7	101.9	102.1	0.2	0.2	3.2
Travel goods, handbags & similar containers	25	115.4	115.4	115.6	-	0.2	0.1
Articles of apparel & clothing accessories	64	106.8	106.2	106.6	-0.5	0.4	1.1
Footw ear	16	105.2	105.2	105.0	0.1	-0.2	0.2
Professional scientific & controlling instruments	207	108.2	108.3	110.7	0.1	2.2	-2.0
Photographic & optical goods nes; w atches & clocks	99	93.2	92.9	92.9	-0.3	0.1	-2.7
Miscellaneous manufactured articles nes	277	90.5	91.1	90.6	0.7	-0.6	-2.2

**Table 2 Export Price Index**

**May 2018**

Commodity section / division	Weights	Index (2012=100)			% Change		
		Mar 2018	Apr 2018	May 2018	Apr 2018	May 2018	May 2018
					Mar 2018	Apr 2018	May 2017
<b>All Items</b>	<b>10,000</b>	<b>86.0</b>	<b>87.0</b>	<b>89.3</b>	<b>1.2</b>	<b>2.6</b>	<b>3.8</b>
<b>Non-oil Items</b>	<b>7,395</b>	<b>94.1</b>	<b>94.2</b>	<b>95.1</b>	<b>0.1</b>	<b>0.9</b>	<b>-2.0</b>
Food & Live Animals	124	97.6	96.7	97.0	-1.0	0.3	-2.8
Meat & meat preparations	2	104.2	102.2	102.2	-2.0	-	-2.7
Dairy products & birds' eggs	7	73.0	74.9	76.7	2.6	2.5	-5.1
Fish seafood & preparations	9	103.7	103.4	103.8	-0.3	0.4	0.3
Cereals & cereal preparations	7	114.6	113.4	112.4	-1.1	-0.9	1.5
Vegetables & fruit	8	136.4	134.0	129.7	-1.8	-3.2	-7.2
Sugar, sugar preparations & honey	6	94.4	93.7	94.0	-0.8	0.3	-6.7
Coffee, tea, cocoa, spices & manufactures	29	92.2	91.7	92.7	-0.6	1.1	-9.6
Animal feeding stuff (excl unmilled cereals)	6	101.6	101.3	102.5	-0.3	1.2	-5.0
Miscellaneous food preparations	50	94.6	93.1	93.5	-1.5	0.4	2.4
Beverages & Tobacco	87	105.3	104.0	105.7	-1.3	1.6	-2.0
Beverages	66	100.9	99.3	101.1	-1.6	1.8	-2.4
Tobacco & manufactures	21	119.1	118.8	120.3	-0.3	1.3	-0.9
Crude Materials (excl fuels)	60	79.4	79.5	80.3	-	1.0	0.6
Crude rubber	15	50.4	49.8	51.1	-1.2	2.7	-18.0
Cork & w ood	2	101.9	101.9	102.4	-	0.4	1.9
Pulp and w aste paper	6	108.2	106.4	107.8	-1.6	1.3	-3.6
Textile fibres & their w astes	3	76.4	76.4	76.4	-	-	-2.2
Metalliferous ores & metal scrap	29	83.6	84.0	84.9	0.5	1.0	9.4
Crude animal & vegetable materials nes	5	96.8	98.5	97.5	1.7	-1.0	0.9
Mineral Fuels, Lubricants & Related Materials	2,605	62.8	66.7	72.8	6.1	9.2	32.7
Petroleum & products & related materials	2,595	62.9	66.7	72.8	6.1	9.2	32.7
Gas	10	49.4	50.9	59.3	3.1	16.3	31.9
Animal & Vegetable Oils, Fats & Waxes	8	85.6	85.6	86.2	-	0.7	-4.0
Animal oils & fats	1	96.7	96.7	96.7	-	-	12.7
Fixed vegetable fats & oils	5	77.0	77.0	77.8	-	1.1	-6.9
Animal & vegetable oils, fats & w axes nes	2	106.2	106.2	106.2	-	-	-
Chemicals & Chemical Products	1,344	94.0	94.1	95.1	0.1	1.1	1.6
Organic chemicals	498	89.2	89.2	89.7	-	0.5	4.7
Inorganic chemicals	13	93.9	93.3	93.6	-0.7	0.3	-0.4
Dyeing, tanning & colouring materials	32	94.5	95.3	96.0	0.9	0.8	4.3
Medicinal & pharmaceutical products	228	89.3	89.3	90.4	-	1.2	-4.0
Essential oils & perfume; toilet cleaning products	127	110.2	109.9	110.1	-0.2	0.2	-2.2
Plastics in primary forms	289	96.1	96.8	99.0	0.8	2.3	7.8
Plastics in non-primary forms	29	97.7	95.9	95.3	-1.9	-0.6	-1.9
Chemical materials & products nes	128	98.9	99.0	100.4	0.1	1.4	-6.6
Manufactured Goods	381	95.9	96.8	97.6	0.9	0.8	2.6
Rubber manufactures nes	26	100.3	100.2	100.9	-	0.7	-0.3
Wood & cork manufactures (excl furniture)	2	112.4	115.7	120.3	2.9	4.0	7.7
Paper manufactures	40	98.0	98.6	98.9	0.6	0.3	0.5
Textile manufactures	20	99.6	98.4	99.0	-1.2	0.7	-1.5
Non-metal mineral manufactures nes	31	93.5	93.1	93.3	-0.4	0.2	-2.5
Iron & steel	96	84.8	85.5	86.0	0.9	0.6	4.5
Non-ferrous metals	76	104.1	107.8	109.7	3.6	1.8	9.8
Manufactures of metals nes	90	98.3	98.1	98.8	-0.1	0.7	-1.0
Machinery & Transport Equipment	4,595	93.0	93.1	94.0	0.1	1.0	-3.2
Pow er-generating machinery & equipment	188	103.3	104.3	106.1	1.0	1.7	-0.8
Machinery specialized for particular industries	397	93.7	93.0	93.9	-0.8	1.0	1.9
Metal w orking machinery	28	108.7	109.3	112.6	0.5	3.1	3.6
General industrial machinery	243	101.8	101.6	102.1	-0.2	0.5	-2.2
Office machines & data-processing machines	680	94.6	94.5	95.7	-0.1	1.2	-5.6
Telecommunication apparatus	336	74.3	73.7	73.8	-0.8	0.2	-10.6
Electrical machinery apparatus nes, electrical parts	2,582	92.1	92.3	93.3	0.3	1.0	-3.0
Road vehicles	141	113.4	113.5	113.5	0.1	-	-1.3
Miscellaneous Manufactured Articles	796	99.2	99.2	99.7	-	0.4	-2.8
Prefab building, sanitary plumbing, lighting nes	6	136.9	138.1	137.5	0.9	-0.4	15.5
Furniture, bedding, mattresses, cushions & others	5	108.3	108.3	108.8	-0.1	0.5	0.5
Travel goods, handbags & similar containers	11	121.9	128.1	130.7	5.1	2.0	5.3
Articles of apparel & clothing accessories	33	103.4	103.1	102.9	-0.3	-0.2	-0.2
Footw ear	8	101.5	101.5	101.4	-0.1	-	-0.8
Professional scientific & controlling instruments	264	102.7	102.6	103.3	-0.1	0.7	-4.5
Photographic & optical goods nes; w atches & clocks	86	94.1	93.8	94.0	-0.4	0.2	-0.6
Miscellaneous manufactured articles nes	383	96.2	96.1	96.4	-0.1	0.3	-3.0

**Table 3 Import Price Index**

Section	All Items	Non-oil Items	Food & Live Animals	Beverages & Tobacco	Crude Materials	Mineral Fuels	Animal & Vegetable Oils, Fats & Waxes	Chemicals & Chemical Products	Manufactured Goods	Machinery & Transport Equipment	Misc. Manufactured Articles
Weights	10,000	6,684	215	86	83	3,316	37	694	635	4,205	729
<b>Index (2012=100)</b>											
2014	<b>94.5</b>	<b>97.3</b>	104.2	102.1	93.4	88.8	82.1	97.9	97.7	96.8	97.4
2015	<b>82.5</b>	<b>97.7</b>	101.5	104.7	88.0	52.0	70.1	92.0	94.2	98.7	100.5
2016	<b>78.1</b>	<b>95.7</b>	99.0	104.4	81.8	42.8	76.0	88.1	87.7	97.3	101.3
2017	<b>82.7</b>	<b>96.3</b>	100.6	105.1	84.0	55.4	78.8	90.8	91.6	97.0	101.2
2017											
May	<b>82.4</b>	<b>96.8</b>	100.3	105.2	83.8	53.3	80.4	90.5	90.7	98.0	101.4
Jun	<b>80.9</b>	<b>96.4</b>	100.4	105.1	82.7	49.5	78.1	89.7	90.5	97.6	101.4
Jul	<b>80.6</b>	<b>95.5</b>	100.4	104.8	82.5	50.5	76.0	88.7	90.2	96.5	100.5
Aug	<b>81.1</b>	<b>95.5</b>	100.5	105.6	83.0	52.2	75.4	89.2	91.5	96.2	100.6
Sep	<b>82.0</b>	<b>95.5</b>	101.0	105.4	83.7	54.7	77.5	89.9	91.9	95.9	100.7
Oct	<b>83.0</b>	<b>96.0</b>	100.5	104.8	83.8	56.7	77.2	91.2	93.1	96.5	100.8
Nov	<b>84.2</b>	<b>95.9</b>	100.7	104.6	83.7	60.6	75.8	91.0	92.9	96.4	100.5
Dec	<b>84.0</b>	<b>95.6</b>	100.8	104.5	83.3	60.8	72.7	91.7	92.7	96.0	99.6
2018											
Jan	<b>84.6</b>	<b>95.1</b>	99.5	103.8	83.4	63.3	74.0	91.0	92.7	95.4	99.4
Feb	<b>84.1</b>	<b>95.4</b>	99.4	103.9	83.6	61.4	73.7	92.0	93.2	95.7	99.3
Mar	<b>83.6</b>	<b>94.6</b>	97.2	103.8	83.7	61.4	72.7	92.2	93.2	94.6	99.1
Apr	<b>84.5</b>	<b>94.3</b>	97.2	103.9	83.9	64.8	72.3	92.7	93.9	93.9	99.3
May	<b>87.8</b>	<b>95.3</b>	98.1	104.2	84.4	72.5	72.2	93.4	95.5	94.9	99.8
<b>Percentage Change over same period of previous year (%)</b>											
2015	<b>-12.6</b>	<b>0.4</b>	-2.6	2.5	-5.8	-41.5	-14.6	-6.0	-3.6	2.0	3.2
2016	<b>-5.3</b>	<b>-2.0</b>	-2.5	-0.3	-7.1	-17.8	8.5	-4.3	-7.0	-1.4	0.8
2017	<b>5.8</b>	<b>0.6</b>	1.7	0.7	2.7	29.5	3.7	3.1	4.5	-0.3	-0.1
2017											
May	<b>5.6</b>	<b>1.4</b>	3.1	1.4	2.8	24.3	4.6	2.8	5.0	0.8	0.3
Jun	<b>3.2</b>	<b>1.8</b>	2.9	1.4	2.4	9.0	4.6	2.9	5.1	1.3	0.6
Jul	<b>4.2</b>	<b>1.3</b>	2.5	1.3	1.6	16.6	5.0	2.6	4.0	1.0	-0.6
Aug	<b>5.0</b>	<b>1.4</b>	2.6	2.1	3.1	20.7	-0.6	3.8	5.4	0.8	-0.6
Sep	<b>4.9</b>	<b>0.8</b>	2.2	1.7	4.4	22.6	-1.6	3.2	5.5	-0.1	-0.6
Oct	<b>3.4</b>	<b>0.8</b>	0.4	0.5	3.3	13.5	-0.4	3.0	5.8	-	-1.0
Nov	<b>4.1</b>	<b>-0.9</b>	-0.3	-0.3	0.4	24.3	-6.1	1.6	3.0	-1.7	-1.8
Dec	<b>-0.4</b>	<b>-2.5</b>	-1.4	-1.1	-2.4	6.9	-14.8	-0.2	1.4	-3.4	-2.7
2018											
Jan	<b>-0.2</b>	<b>-2.6</b>	-2.0	-1.9	-2.7	8.2	-14.7	-2.2	1.1	-3.1	-3.2
Feb	<b>-0.1</b>	<b>-1.7</b>	-1.6	-1.6	-3.2	5.4	-13.8	-0.2	1.6	-2.1	-2.8
Mar	<b>1.5</b>	<b>-1.9</b>	-3.2	-1.1	-1.5	13.7	-11.2	0.9	2.0	-2.7	-2.5
Apr	<b>1.7</b>	<b>-2.7</b>	-2.9	-1.0	-1.0	16.9	-8.5	1.8	3.4	-4.2	-2.7
May	<b>6.6</b>	<b>-1.5</b>	-2.2	-1.0	0.7	36.2	-10.2	3.2	5.3	-3.1	-1.5



**Table 4 Export Price Index**

Section	All Items	Non-oil Items	Food & Live Animals	Beverages & Tobacco	Crude Materials	Mineral Fuels	Animal & Vegetable Oils, Fats & Waxes	Chemicals & Chemical Products	Manufactured Goods	Machinery & Transport Equipment	Misc. Manufactured Articles
Weights	10,000	7,395	124	87	60	2,605	8	1,344	381	4,595	796
<b>Index (2012=100)</b>											
2014	95.0	97.3	101.5	100.2	84.0	88.6	90.4	100.3	99.3	96.9	93.6
2015	88.5	99.8	103.6	107.2	74.8	56.3	84.6	97.5	96.3	101.2	97.8
2016	83.7	97.1	100.7	109.4	69.8	45.6	84.6	92.5	92.9	98.2	101.4
2017	86.1	96.2	98.6	107.5	80.2	57.3	89.0	93.3	95.4	96.1	102.0
2017											
May	86.0	97.0	99.7	107.8	79.8	54.9	89.7	93.6	95.1	97.1	102.5
Jun	84.4	95.9	99.4	108.5	78.1	51.9	87.7	92.4	94.0	95.9	102.0
Jul	84.4	95.5	97.2	106.8	77.3	52.9	86.9	91.7	94.7	95.5	101.8
Aug	84.4	94.9	96.9	106.7	78.9	54.9	85.9	91.5	95.4	94.6	101.3
Sep	85.0	94.6	96.8	105.9	79.7	57.9	85.8	91.8	95.9	94.1	101.0
Oct	86.1	95.5	98.0	105.9	79.2	59.3	87.0	93.1	96.2	95.1	101.3
Nov	86.6	95.0	98.6	105.7	78.5	62.7	87.1	93.0	95.7	94.5	101.1
Dec	86.5	94.7	98.2	105.2	78.8	63.4	86.6	93.8	95.3	93.9	100.2
2018											
Jan	86.8	94.4	99.1	104.9	79.4	65.2	85.8	94.4	96.2	93.3	99.5
Feb	86.2	94.4	98.0	105.4	79.8	63.1	85.5	94.6	96.7	93.2	99.1
Mar	86.0	94.1	97.6	105.3	79.4	62.8	85.6	94.0	95.9	93.0	99.2
Apr	87.0	94.2	96.7	104.0	79.5	66.7	85.6	94.1	96.8	93.1	99.2
May	89.3	95.1	97.0	105.7	80.3	72.8	86.2	95.1	97.6	94.0	99.7
<b>Percentage Change over same period of previous year (%)</b>											
2015	-6.9	2.6	2.1	7.0	-11.0	-36.4	-6.4	-2.8	-3.0	4.4	4.5
2016	-5.4	-2.7	-2.8	2.0	-6.7	-19.0	-	-5.2	-3.6	-3.0	3.6
2017	2.9	-0.9	-2.2	-1.7	14.9	25.7	5.2	0.9	2.7	-2.1	0.7
2017											
May	2.7	0.1	-0.5	-0.9	14.5	17.8	5.8	0.3	3.5	-0.6	1.7
Jun	1.4	-	-0.5	0.1	14.2	9.5	4.3	0.7	2.7	-0.7	1.2
Jul	2.6	0.3	-1.4	-1.8	13.0	15.8	2.6	1.6	3.6	-0.4	0.9
Aug	3.2	-	-1.9	-1.8	14.2	22.2	2.2	1.4	4.0	-0.8	0.2
Sep	2.4	-1.2	-1.6	-2.6	14.9	23.7	0.4	0.9	4.2	-2.5	-0.4
Oct	1.1	-1.5	-2.2	-4.0	10.9	15.1	0.5	2.0	3.7	-3.1	-0.4
Nov	0.8	-3.5	-3.3	-4.6	5.9	25.0	-0.1	-0.2	0.4	-5.3	-1.3
Dec	-2.4	-5.0	-4.3	-5.9	-1.6	10.0	-3.2	-2.1	-1.3	-6.5	-2.9
2018											
Jan	-2.3	-4.8	-0.7	-5.0	-4.4	9.5	-6.6	-0.2	-	-6.6	-4.4
Feb	-2.0	-3.9	-1.6	-4.3	-4.5	7.1	-8.9	-0.4	1.4	-5.3	-4.2
Mar	-0.7	-3.5	-1.0	-3.2	-4.8	13.7	-8.4	-1.0	0.6	-4.7	-3.5
Apr	0.7	-2.8	-3.3	-4.2	-2.5	18.2	-7.0	0.1	1.8	-3.9	-3.5
May	3.8	-2.0	-2.8	-2.0	0.6	32.7	-4.0	1.6	2.6	-3.2	-2.8

### **NOTATIONS**

nes            not elsewhere specified  
-                nil or negligible

### **NOTES**

The Import and Export Price Indices report contains statistics that are the most recent available at the time of its preparation.

Some statistics, particularly those for the most recent time periods, are provisional and may be subject to revision in later issues.