



Import & Export Price Indices May 2021

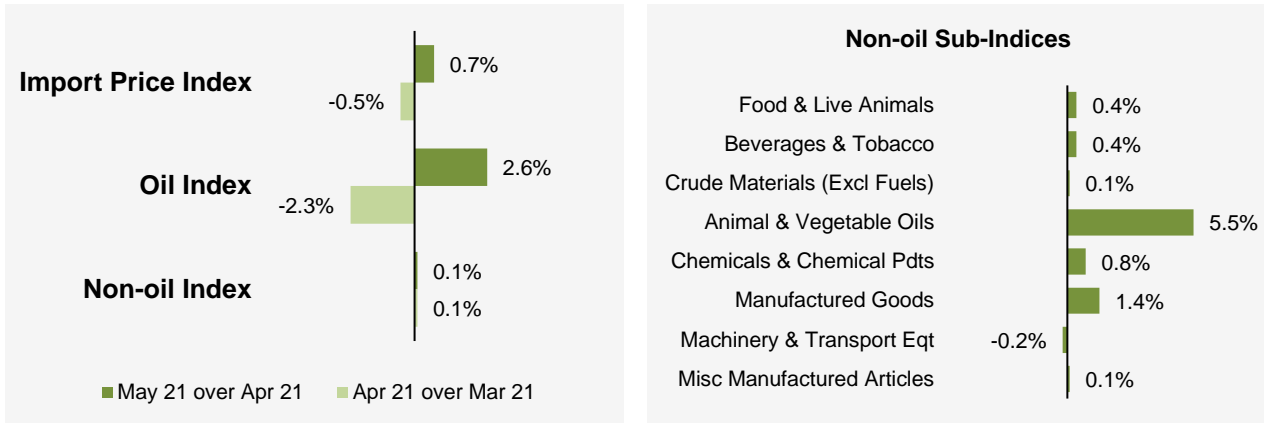
IMPORT AND EXPORT PRICE INDICES, May 2021
ISSN 2591-7463

© Department of Statistics, Ministry of Trade & Industry, Republic of Singapore

Reproducing or quoting any part of this publication is permitted, provided this publication is accredited as the source. Please refer to the SingStat Website Terms of Use (<http://www.singstat.gov.sg/terms-of-use>) for more details on the conditions of use of this publication.

Import Price Index (2018 = 100) May 2021

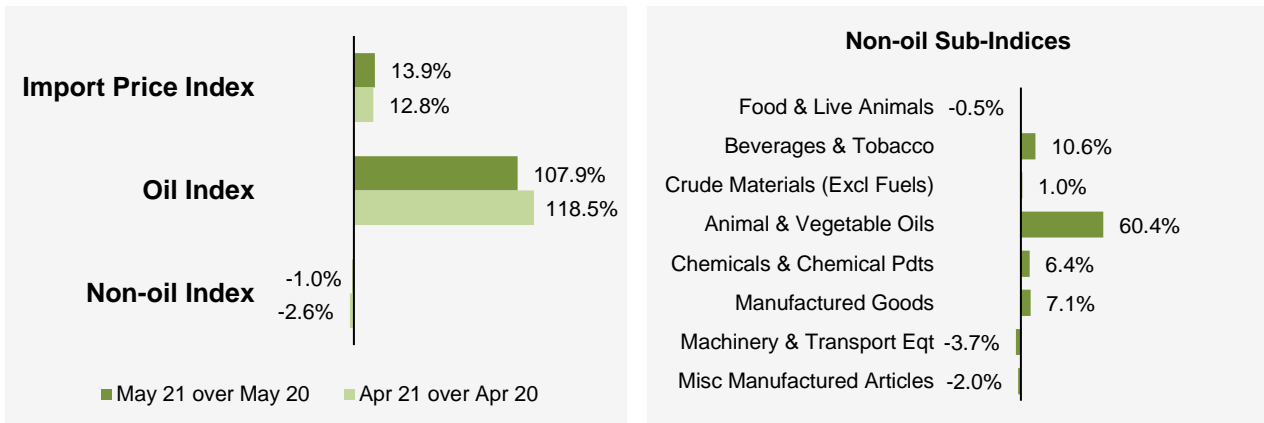
Month-on-Month Change



The Import Price Index rose 0.7% in May 2021, in contrast to the 0.5% decrease in April 2021. The Oil index increased 2.6%, after falling 2.3% in the previous month. The Non-oil index rose 0.1% in May 2021, at the same rate as April 2021.

Among the Non-oil sub-indices, the increases were led by the Manufactured Goods (1.4%) index, due mainly to higher prices of iron & steel products, and the Chemicals & Chemical Products (0.8%) index. The increases were partially moderated by the decline in the Machinery & Transport Equipment (-0.2%) index.

Year-on-Year Change

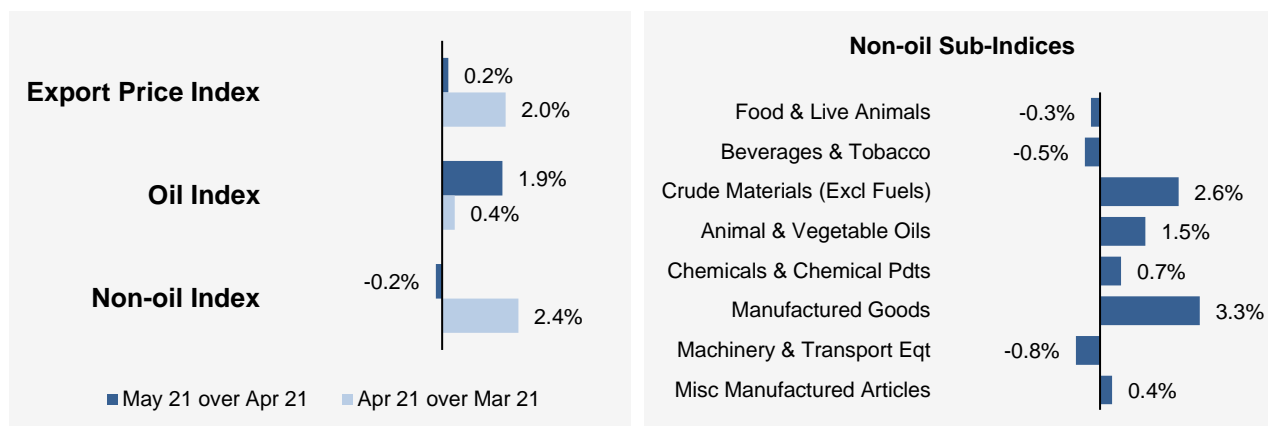


The Import Price Index rose 13.9% in May 2021 from a year ago, extending the 12.8% increase in April 2021. The Oil index increased 107.9% while the Non-oil index dropped 1.0%.

For the Non-oil sub-indices, lower prices of Machinery & Transport Equipment (-3.7%), Miscellaneous Manufactured Articles (-2.0%) and Food & Live Animals (-0.5%) were partially offset by higher prices of Animal & Vegetable Oils (60.4%), Beverages & Tobacco (10.6%), Manufactured Goods (7.1%), Chemicals & Chemical Products (6.4%) and Crude Materials (1.0%).

Export Price Index (2018 = 100) May 2021

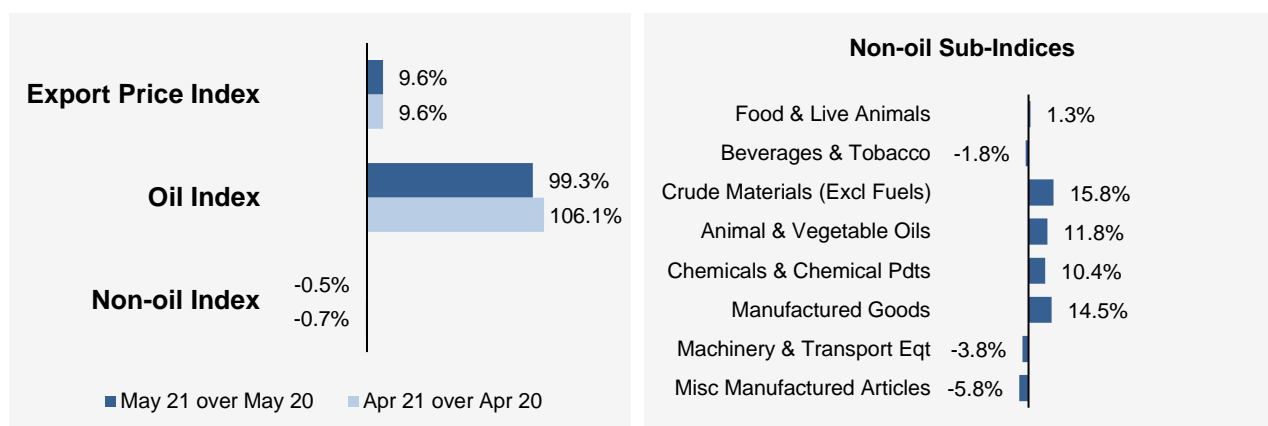
Month-on-Month Change



The Export Price Index increased 0.2% in May 2021, following the 2.0% rise in April 2021. The Oil index rose 1.9%, extending the 0.4% increase in the previous month. The Non-oil index fell 0.2% in May 2021, in contrast to the 2.4% rise in April 2021.

Among the Non-oil sub-indices, the decreases led by the Machinery & Transport Equipment (-0.8%) and Food & Live Animals (-0.3%) indices were partially moderated by the increases led by the Manufactured Goods (3.3%) index, due mainly to higher prices of non-ferrous metal products, and the Chemicals & Chemical Products (0.7%) index.

Year-on-Year Change



The Export Price Index increased 9.6% in May 2021 from a year ago, at the same rate of increase as in April 2021. The Oil index went up 99.3% while the Non-oil index dropped 0.5%.

For the Non-oil sub-indices, lower prices of Miscellaneous Manufactured Articles (-5.8%), Machinery & Transport Equipment (-3.8%) and Beverages & Tobacco (-1.8%) were partially offset by higher prices of Crude Materials (15.8%), Manufactured Goods (14.5%), Animal & Vegetable Oils (11.8%), Chemicals & Chemical Products (10.4%) and Food & Live Animals (1.3%).

Technical Note

The **Import Price Index (IPI)** is used primarily as an indicator to track the price trends of imported goods into Singapore. Prices of imports, valued at cif (cost, insurance and freight) are obtained monthly from major importers. The weighting pattern of the index is derived from import statistics for 2018.

The **Export Price Index (EPI)** measures changes in the price of all exports of merchandise from Singapore, including re-exports. In general, prices are obtained from major exporters of the selected commodities. Prices used in the index computation, are the prices of goods that physically leave Singapore's main ports of export; also termed as free on board prices. The weights of the index are derived from the distribution of export by commodity in 2018.

Index Formula

The 2018-based series is compiled using the Laspeyres formula where the price and weight reference periods are aligned to the year 2018. The geometric mean formula has been adopted in the computation of unweighted elementary aggregate price indices. The arithmetic mean formula is applied in compiling indices at higher levels of aggregation where weights of specific sub-indices are available.

Measurement of Changes in Price Indices

Change over previous month compares the index of the month with that of the preceding month. Such comparisons measure the change in the price index between two consecutive months. They serve as useful short-term indicators of the price movements.

Change over same period of previous year measures change in the index over a twelve-month period. Such comparisons compare the movement in the price index between similar months in two consecutive years.

Linking the Old 2012-Based Price Index Series to the New 2018-Based Price Index Series

The IPI and EPI have been rebased from base year 2012 to base year 2018. To facilitate comparison of the historical price indices across base years, the old 2012-based series are linked to the new 2018-based series by re-scaling them via a Linked Coefficient. The Linked Coefficient is the ratio of the annual 2018-based index in 2018 to the annual 2012-based index in 2018.

Example : Linking the old Iron & Steel Index series for IPI prior to 2018, to the 2018-based Iron & Steel Index (2018=100)

1) Calculate the linked coefficient

Year	Iron & Steel Index (2012=100)	Iron & Steel Index (2018=100)	Linked Coefficient
2018	93.4	100.0	$100.0 \div 93.4 = 1.071$

2) Re-scaling the old series to the 2018-based series using the Linked Coefficient

Year	Month	Iron & Steel Index (2012=100)	Iron & Steel Index (2018=100)
2016	Dec	84.0	$84.0 \times 1.071 = 90.0$
2017	Jan	85.6	$85.6 \times 1.071 = 91.7$

Linking Method for Maintaining the Old Index Reference Period

To continue the old 2012-based index series going forward in time, re-scale the new 2018-based index series to the old base year 2012 level, via a Linked Coefficient. The Linked Coefficient is the ratio of the annual 2012-based index in 2018 to the annual 2018-based index in 2018.

Example : Linking the new 2018-based Iron & Steel Index series for IPI to the 2012-based Iron & Steel Index (2012=100)

1) Calculate the linked coefficient

Year	Iron & Steel Index (2018=100)	Iron & Steel Index (2012=100)	Linked Coefficient
2018	100.0	93.4	$93.4 \div 100.0 = 0.934$

2) Re-scaling the new series to the 2012-based series using the Linked Coefficient

Year	Month	Iron & Steel Index (2018=100)	Iron & Steel Index (2012=100)
2019	Jan	98.6	$98.6 \times 0.934 = 92.1$
2019	Feb	102.4	$102.4 \times 0.934 = 95.6$

Index Revision

The indices may be revised when late returns and amendments received from respondents are incorporated.

Dissemination of Data

The Import and Export Price Indices are available on the SingStat Website (www.singstat.gov.sg/tablebuilder). Excel tables for this month's report are available at <https://www.singstat.gov.sg/publications/economy/import-export-price-indices> or through the QR code below:



Import Price Index (2018 = 100) May 2021

Chart 1: Index

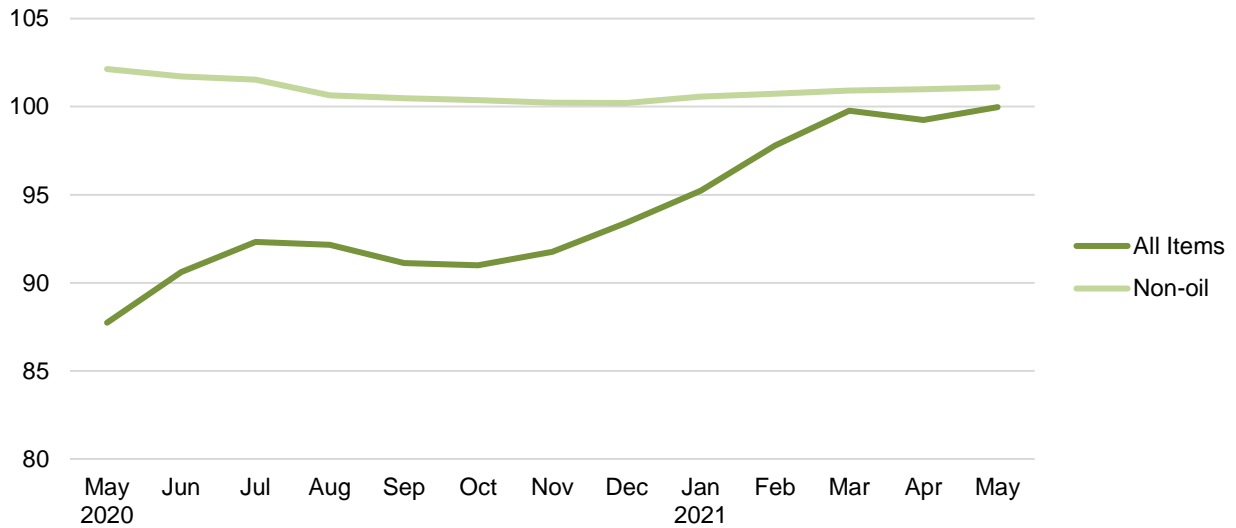


Chart 2: Month-on-Month Change

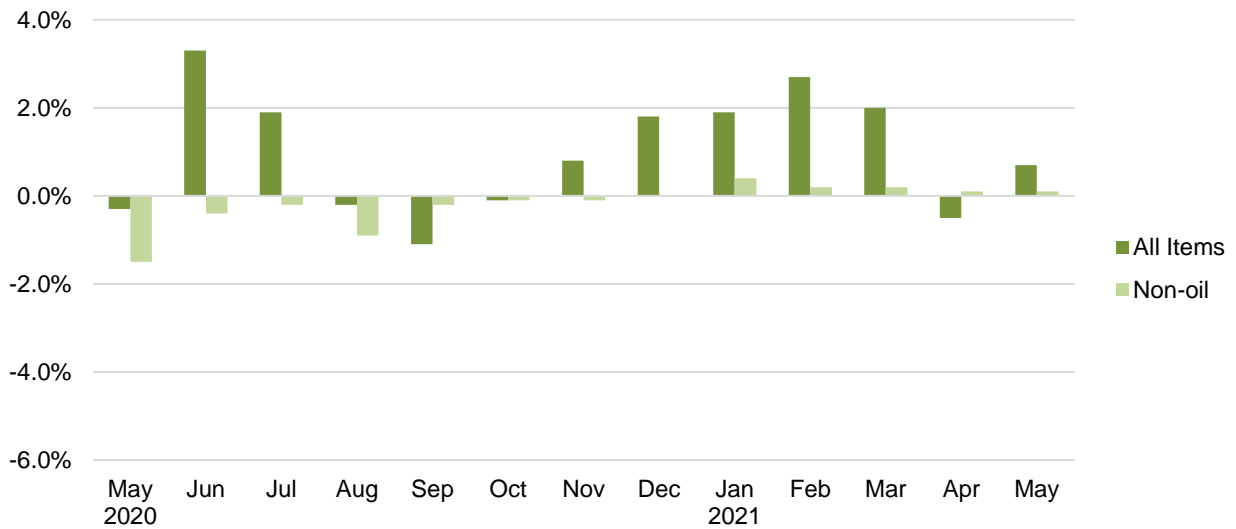
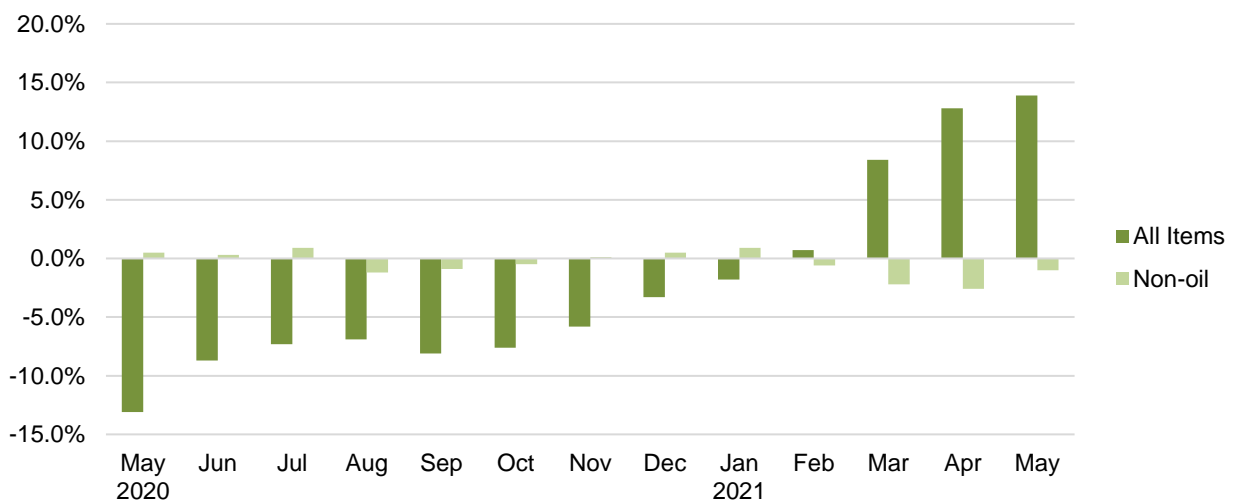


Chart 3: Year-on-Year Change



Export Price Index (2018 = 100) May 2021

Chart 4: Index

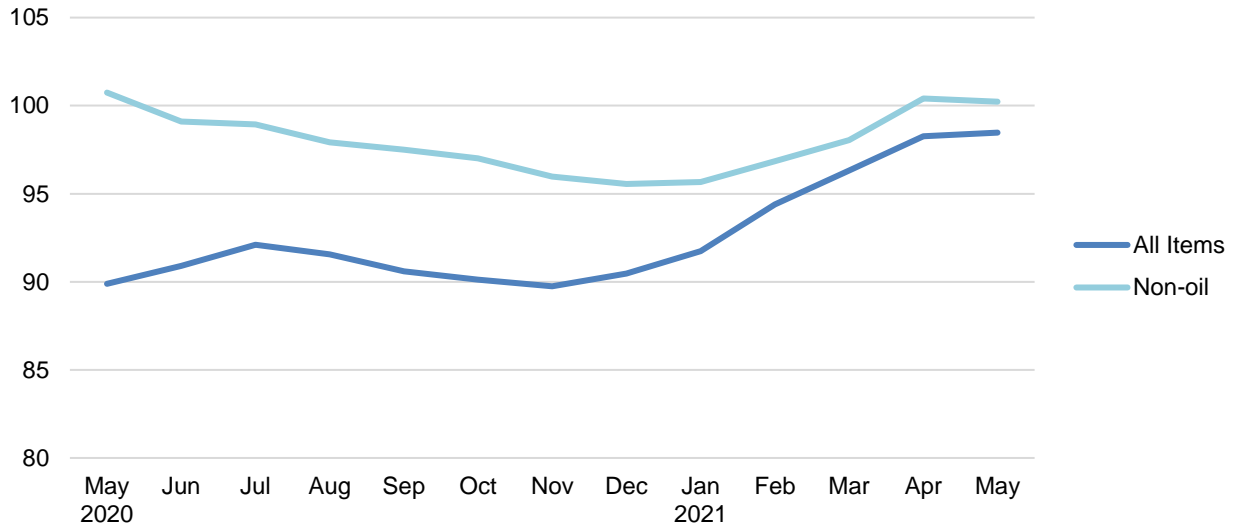


Chart 5: Month-on-Month Change

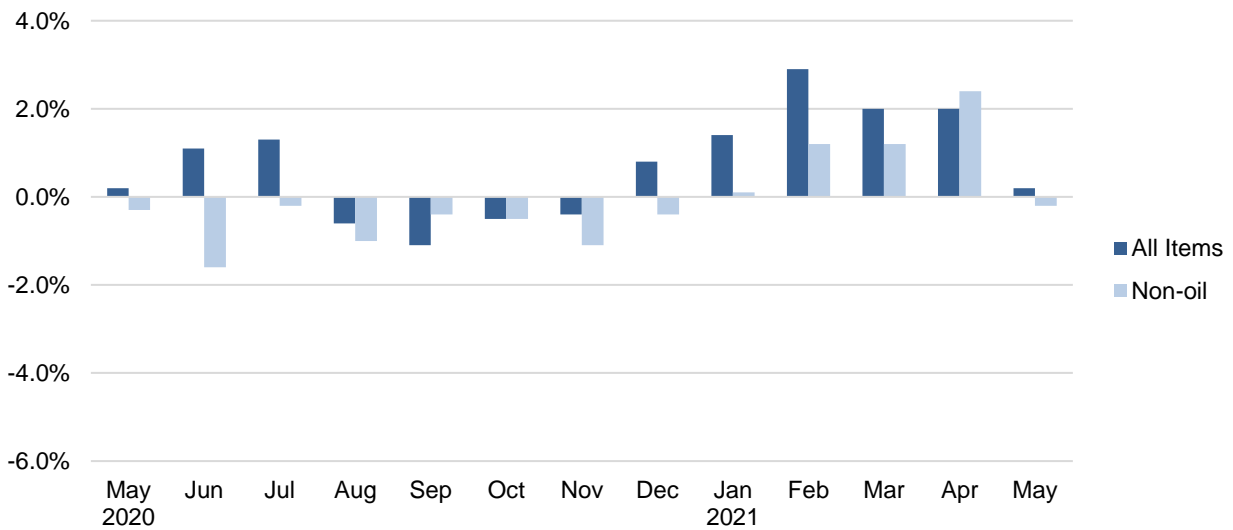


Chart 6: Year-on-Year Change

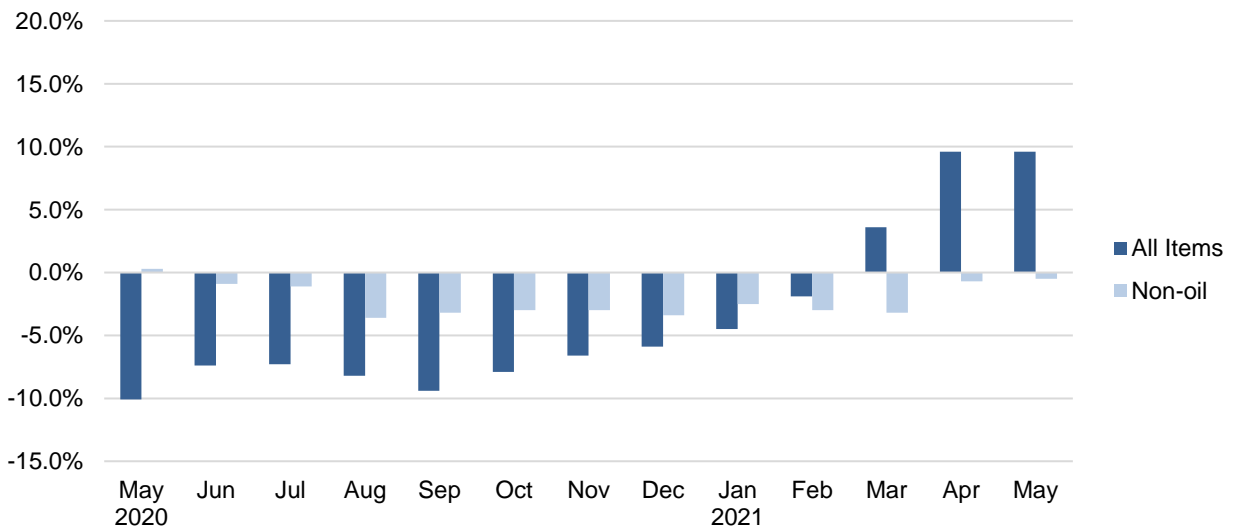


Table 1 Import Price Index

May 2021

Commodity section / division	Weights	Index (2018=100)			% Change		
					Apr 2021	May 2021	May 2021
		Mar 2021	Apr 2021	May 2021	Mar 2021	Apr 2021	May 2020
All Items	10,000	99.8	99.3	100.0	-0.5	0.7	13.9
Non-oil Items	7,410	100.9	101.0	101.1	0.1	0.1	-1.0
Food & Live Animals	247	103.5	103.4	103.9	-	0.4	-0.5
Live animals	9	101.4	102.1	102.8	0.7	0.7	3.9
Meat & meat preparations	31	109.7	110.0	108.0	0.3	-1.9	-0.4
Dairy products & birds' eggs	30	106.4	110.9	113.6	4.1	2.5	1.4
Fish seafood & preparations	34	97.0	97.3	98.0	0.4	0.7	-0.7
Cereals & cereal preparations	24	99.5	99.2	98.8	-0.3	-0.3	-3.6
Vegetables & fruit	48	107.2	103.8	102.9	-3.3	-0.9	-2.4
Sugar, sugar preparations & honey	9	109.0	111.3	113.2	2.1	1.8	7.2
Coffee, tea, cocoa, spices & manufactures	28	96.4	95.9	98.6	-0.5	2.8	0.1
Animal feeding stuff (excl unmilled cereals)	4	102.4	102.0	102.8	-0.3	0.8	4.3
Miscellaneous food preparations	31	104.1	104.1	104.7	-	0.6	-1.5
Beverages & Tobacco	112	107.1	106.9	107.4	-0.1	0.4	10.6
Beverages	84	108.0	108.0	108.6	-0.1	0.6	15.0
Tobacco & manufactures	28	104.1	103.7	103.6	-0.3	-0.2	-1.2
Crude Materials (excl fuels)	84	102.0	102.7	102.8	0.7	0.1	1.0
Oil seeds & oleaginous fruits	2	118.1	120.6	121.3	2.1	0.5	4.3
Crude rubber	19	92.5	92.0	91.7	-0.6	-0.3	-18.6
Cork & w ood	3	94.6	95.5	98.7	0.9	3.4	5.1
Crude fertilizers & minerals	30	101.8	101.7	101.6	-0.1	-0.1	-0.4
Metalliferous ores & metal scrap	17	117.5	120.3	120.6	2.4	0.3	36.3
Crude animal & vegetable materials nes	13	95.4	96.5	96.5	1.1	-	-7.2
Mineral Fuels, Lubricants & Related Materials	2,590	96.5	94.3	96.7	-2.3	2.6	107.9
Petroleum & products & related materials	2,431	97.6	95.0	97.8	-2.7	2.9	108.0
Gas	159	80.2	83.4	81.1	4.0	-2.7	105.3
Animal & Vegetable Oils, Fats & Waxes	27	138.2	143.3	151.1	3.7	5.5	60.4
Fixed vegetable fats & oils	27	138.2	143.3	151.1	3.7	5.5	60.4
Chemicals & Chemical Products	888	101.0	102.0	102.7	1.0	0.8	6.4
Organic chemicals	216	98.5	100.5	100.4	2.0	-	12.8
Inorganic chemicals	35	102.2	101.8	103.8	-0.4	2.0	-0.9
Dyeing, tanning & colouring materials	33	103.9	103.9	104.7	-	0.8	-3.7
Medicinal & pharmaceutical products	101	104.8	104.7	104.3	-0.1	-0.4	0.7
Essential oils & perfume; toilet cleaning products	147	107.4	107.8	108.4	0.4	0.6	6.4
Plastics in primary forms	164	98.7	101.3	103.8	2.7	2.5	22.6
Plastics in non-primary forms	38	101.9	101.6	102.2	-0.3	0.5	-3.3
Chemical materials & products nes	154	97.0	97.1	97.9	-	0.8	-5.3
Manufactured Goods	505	104.9	105.9	107.4	0.9	1.4	7.1
Rubber manufactures nes	25	102.6	99.2	99.8	-3.3	0.5	1.0
Paper manufactures	51	89.4	91.3	91.8	2.2	0.6	-2.5
Textile manufactures	26	100.8	100.2	100.1	-0.6	-0.2	-3.2
Non-metal mineral manufactures nes	60	104.2	104.0	103.8	-0.2	-0.2	-0.8
Iron & steel	131	106.0	109.0	111.9	2.8	2.7	12.6
Non-ferrous metals	84	123.9	124.5	128.9	0.5	3.5	31.8
Manufactures of metals nes	128	99.1	99.5	99.3	0.3	-0.2	-3.3
Machinery & Transport Equipment	4,690	99.2	98.9	98.7	-0.3	-0.2	-3.7
Pow er-generating machinery & equipment	526	113.1	112.6	112.4	-0.4	-0.2	-1.5
Machinery specialized for particular industries	306	99.4	98.9	98.6	-0.6	-0.3	-6.2
Metal working machinery	23	103.5	103.3	103.2	-0.2	-0.1	-2.1
General industrial machinery	281	101.9	101.1	100.9	-0.7	-0.3	-3.9
Office machines & data-processing machines	457	94.0	96.0	92.8	2.2	-3.3	-5.8
Telecommunication apparatus	390	86.3	86.4	86.2	-	-0.2	-5.5
Electrical machinery apparatus nes, electrical parts	2,542	98.9	98.3	98.5	-0.6	0.3	-3.3
Road vehicles	164	98.5	98.6	98.5	0.1	-0.1	-1.1
Miscellaneous Manufactured Articles	857	105.2	105.5	105.6	0.4	0.1	-2.0
Prefab building, sanitary plumbing, lighting nes	12	105.7	105.7	105.7	-	-	3.9
Furniture, bedding, mattresses, cushions & others	26	108.8	107.9	107.7	-0.8	-0.2	1.2
Travel goods, handbags & similar containers	54	106.4	106.3	106.3	-0.1	-0.1	3.7
Articles of apparel & clothing accessories	79	101.0	100.8	100.8	-0.3	-	-1.6
Footw ear	24	104.6	104.1	104.1	-0.4	-0.1	3.4
Professional scientific & controlling instruments	275	102.5	101.6	101.2	-0.8	-0.3	-6.6
Photographic & optical goods nes; w atches & clocks	106	106.1	105.9	106.3	-0.2	0.3	0.9
Miscellaneous manufactured articles nes	283	108.0	110.3	110.8	2.1	0.5	-0.8

Figures may not sum to total due to rounding.

Table 2 Export Price Index

May 2021

Commodity section / division	Weights	Index (2018=100)			% Change		
					Apr 2021	May 2021	May 2021
		Mar 2021	Apr 2021	May 2021	Mar 2021	Apr 2021	May 2020
All Items	10,000	96.3	98.3	98.5	2.0	0.2	9.6
Non-oil Items	8,022	98.0	100.4	100.2	2.4	-0.2	-0.5
Food & Live Animals	236	94.8	96.1	95.8	1.3	-0.3	1.3
Dairy products & birds' eggs	5	43.0	40.7	41.0	-5.5	0.9	-60.7
Fish seafood & preparations	9	83.5	83.9	84.8	0.5	1.0	-8.9
Cereals & cereal preparations	7	95.0	95.4	95.2	0.4	-0.2	-2.8
Vegetables & fruit	8	92.1	91.7	91.8	-0.5	0.1	-4.6
Sugar, sugar preparations & honey	3	105.9	105.3	104.5	-0.6	-0.7	0.6
Coffee, tea, cocoa, spices & manufactures	26	109.7	108.5	109.0	-1.1	0.5	1.9
Animal feeding stuff (excl unmilled cereals)	7	112.2	111.3	110.9	-0.9	-0.3	-6.0
Miscellaneous food preparations	171	93.8	95.9	95.4	2.2	-0.5	4.7
Beverages & Tobacco	103	102.9	105.3	104.8	2.3	-0.5	-1.8
Beverages	75	103.6	106.9	106.3	3.2	-0.6	-0.4
Tobacco & manufactures	28	101.2	101.0	100.8	-0.3	-0.2	-5.4
Crude Materials (excl fuels)	91	91.1	94.2	96.7	3.4	2.6	15.8
Crude rubber	35	76.7	79.4	80.1	3.5	0.9	-10.3
Pulp and waste paper	26	91.4	96.9	98.6	6.0	1.8	28.2
Metalliferous ores & metal scrap	26	109.3	111.3	117.6	1.8	5.7	46.6
Crude animal & vegetable materials nes	4	98.3	97.2	94.0	-1.0	-3.4	-1.9
Mineral Fuels, Lubricants & Related Materials	1,978	89.3	89.6	91.4	0.4	1.9	99.3
Petroleum & products & related materials	1,978	89.3	89.6	91.4	0.4	1.9	99.3
Animal & Vegetable Oils, Fats & Waxes	5	112.4	116.0	117.8	3.2	1.5	11.8
Fixed vegetable fats & oils	5	112.4	116.0	117.8	3.2	1.5	11.8
Chemicals & Chemical Products	1,525	97.8	99.4	100.0	1.6	0.7	10.4
Organic chemicals	428	97.6	100.6	101.5	3.1	0.9	26.3
Inorganic chemicals	14	120.2	121.5	123.9	1.0	2.0	14.2
Dyeing, tanning & colouring materials	37	94.8	95.6	97.6	0.9	2.1	-3.2
Medicinal & pharmaceutical products	250	97.1	96.7	96.7	-0.4	-	-2.5
Essential oils & perfume; toilet cleaning products	232	100.2	99.5	100.1	-0.6	0.5	0.6
Plastics in primary forms	355	96.0	100.4	101.1	4.5	0.8	23.6
Plastics in non-primary forms	29	106.0	106.6	113.9	0.6	6.9	4.4
Chemical materials & products nes	181	97.7	95.9	95.6	-1.9	-0.3	-6.9
Manufactured Goods	318	105.7	107.4	111.0	1.7	3.3	14.5
Rubber manufactures nes	22	98.8	98.4	98.3	-0.4	-0.1	-2.7
Paper manufactures	41	97.5	97.3	98.3	-0.2	1.1	-1.3
Textile manufactures	19	99.1	98.6	98.3	-0.6	-0.3	-4.8
Non-metal mineral manufactures nes	14	97.7	97.1	96.8	-0.7	-0.3	-5.6
Iron & steel	66	103.2	107.9	113.1	4.6	4.8	15.9
Non-ferrous metals	67	126.3	130.1	141.0	3.0	8.4	65.5
Manufactures of metals nes	89	100.2	100.5	100.7	0.3	0.2	-
Machinery & Transport Equipment	4,836	97.5	100.7	99.9	3.3	-0.8	-3.8
Power-generating machinery & equipment	418	99.5	99.2	98.9	-0.3	-0.4	-4.7
Machinery specialized for particular industries	437	94.4	94.4	95.8	-	1.5	-9.4
Metal working machinery	25	98.9	97.9	98.0	-1.0	0.1	-4.6
General industrial machinery	212	102.5	102.5	102.5	-	-	-1.3
Office machines & data-processing machines	467	95.1	102.3	102.1	7.7	-0.3	-5.1
Telecommunication apparatus	366	90.1	90.1	88.7	-	-1.6	-4.2
Electrical machinery apparatus nes, electrical parts	2,814	98.4	102.8	101.4	4.5	-1.4	-2.7
Road vehicles	98	105.5	104.7	105.3	-0.7	0.6	-0.9
Miscellaneous Manufactured Articles	908	99.3	98.9	99.3	-0.4	0.4	-5.8
Prefab building, sanitary plumbing, lighting nes	3	118.3	117.8	118.8	-0.4	0.9	15.4
Furniture, bedding, mattresses, cushions & others	5	105.7	105.3	105.1	-0.4	-0.2	1.4
Travel goods, handbags & similar containers	37	100.1	99.9	99.6	-0.2	-0.4	-4.0
Articles of apparel & clothing accessories	40	110.3	111.2	112.0	0.8	0.8	-2.0
Footwear	14	92.1	91.4	93.8	-0.8	2.7	-4.0
Professional scientific & controlling instruments	365	89.6	89.2	89.0	-0.5	-0.2	-7.3
Photographic & optical goods nes; watches & clocks	98	102.7	103.6	102.9	1.0	-0.7	-1.3
Miscellaneous manufactured articles nes	345	107.2	106.4	107.5	-0.7	1.1	-6.7

Figures may not sum to total due to rounding.

Table 3 Import Price Index

Section	All Items	Non-oil Items	Food & Live Animals	Beverages & Tobacco	Crude Materials	Mineral Fuels	Animal & Vegetable Oils, Fats & Waxes	Chemicals & Chemical Products	Manufactured Goods	Machinery & Transport Equipment	Misc. Manufactured Articles
Weights	10,000	7,410	247	112	84	2,590	27	888	505	4,690	857
Index (2018=100)											
2017	95.3	101.0	101.2	100.2	100.5	79.7	114.7	96.7	96.4	102.2	101.6
2018	100.0	100.0	100.0	100.0	100.0	100.0	100.0	100.0	100.0	100.0	100.0
2019	99.0	100.9	101.5	100.4	101.2	93.4	90.4	98.6	99.9	101.3	102.0
2020	92.0	101.3	102.9	97.9	101.8	65.6	103.1	97.4	99.8	101.3	106.0
2020											
May	87.7	102.1	104.4	97.0	101.8	46.5	94.2	96.6	100.2	102.4	107.8
Jun	90.6	101.7	102.9	97.0	101.4	58.8	96.6	96.6	99.6	102.1	106.7
Jul	92.3	101.5	103.3	93.9	101.9	66.0	98.1	98.1	99.7	101.6	106.7
Aug	92.2	100.6	102.8	93.8	100.5	67.9	101.9	97.8	99.2	100.3	106.5
Sep	91.1	100.5	102.3	94.7	101.2	64.3	104.1	97.3	99.2	100.2	106.3
Oct	91.0	100.4	101.4	95.1	101.8	64.1	108.4	97.3	99.4	100.1	105.8
Nov	91.8	100.2	101.8	95.0	101.5	67.5	113.3	97.4	100.2	99.8	105.4
Dec	93.4	100.2	102.2	96.2	101.5	74.0	120.0	97.6	100.8	99.7	104.8
2021											
Jan	95.2	100.6	103.5	107.2	100.6	80.0	124.7	98.3	101.6	99.5	105.4
Feb	97.8	100.7	104.5	107.0	99.3	89.4	129.8	99.4	103.3	99.3	105.9
Mar	99.8	100.9	103.5	107.1	102.0	96.5	138.2	101.0	104.9	99.2	105.2
Apr	99.3	101.0	103.4	106.9	102.7	94.3	143.3	102.0	105.9	98.9	105.5
May	100.0	101.1	103.9	107.4	102.8	96.7	151.1	102.7	107.4	98.7	105.6
Percentage Change over same period of previous year (%)											
2018	4.9	-1.0	-1.2	-0.2	-0.5	25.5	-12.8	3.4	3.7	-2.1	-1.6
2019	-1.0	0.9	1.5	0.4	1.2	-6.6	-9.6	-1.4	-0.1	1.3	2.0
2020	-7.0	0.3	1.4	-2.5	0.6	-29.8	14.0	-1.2	-0.2	-	3.8
2020											
May	-13.1	0.5	3.4	-3.9	-1.1	-53.1	5.7	-2.9	-0.2	0.1	6.2
Jun	-8.7	0.3	1.1	-3.9	-0.6	-36.6	10.3	-2.6	-	0.1	4.7
Jul	-7.3	0.9	1.0	-6.0	0.5	-31.9	13.8	-0.3	0.5	0.7	4.4
Aug	-6.9	-1.2	0.2	-6.9	-1.9	-25.1	15.1	-1.1	-0.8	-1.9	2.3
Sep	-8.1	-0.9	-0.4	-5.7	-	-30.6	16.8	-1.6	-1.3	-1.3	2.4
Oct	-7.6	-0.5	-1.0	-5.0	1.0	-29.8	21.2	-0.9	-0.6	-1.0	2.4
Nov	-5.8	0.1	0.2	-4.7	0.8	-24.6	21.0	0.1	0.7	-0.4	2.9
Dec	-3.3	0.5	0.1	-3.3	0.4	-15.7	21.3	1.2	1.3	-0.1	2.6
2021											
Jan	-1.8	0.9	0.5	5.8	-1.0	-10.6	21.2	2.1	3.6	-0.2	3.0
Feb	0.7	-0.6	1.3	4.6	-3.3	5.0	27.7	1.2	3.4	-2.1	1.6
Mar	8.4	-2.2	0.2	3.0	-1.5	60.2	39.7	2.1	4.4	-4.2	-1.5
Apr	12.8	-2.6	-1.1	2.7	0.7	118.5	48.1	4.5	5.4	-5.2	-2.3
May	13.9	-1.0	-0.5	10.6	1.0	107.9	60.4	6.4	7.1	-3.7	-2.0

Table 4 Export Price Index

Section	All Items	Non-oil Items	Food & Live Animals	Beverages & Tobacco	Crude Materials	Mineral Fuels	Animal & Vegetable Oils, Fats & Waxes	Chemicals & Chemical Products	Manu- factured Goods	Machinery & Transport Equipment	Misc. Manu- factured Articles
Weights	10,000	8,022	236	103	91	1,978	5	1,525	318	4,836	908
Index (2018=100)											
2017	96.9	100.9	100.0	101.7	101.1	81.4	102.8	97.7	98.2	102.0	101.5
2018	100.0	100.0	100.0	100.0	100.0	100.0	100.0	100.0	100.0	100.0	100.0
2019	98.6	100.1	97.6	102.6	90.6	92.4	97.1	94.8	98.7	101.8	101.9
2020	91.7	98.6	94.7	103.4	81.0	63.7	101.9	91.1	97.9	100.6	103.2
2020											
May	89.9	100.7	94.6	106.7	83.5	45.9	105.3	90.6	96.9	103.8	105.4
Jun	90.9	99.1	93.9	103.8	82.9	57.7	102.5	89.9	97.1	101.6	104.1
Jul	92.1	98.9	95.1	102.2	79.2	64.4	99.1	89.6	98.1	101.5	104.1
Aug	91.6	97.9	94.6	102.0	77.7	65.8	98.4	89.5	98.2	99.8	104.2
Sep	90.6	97.5	97.0	101.2	79.2	62.6	98.4	89.6	98.3	99.1	103.7
Oct	90.1	97.0	93.3	100.5	79.2	62.1	97.5	90.6	98.3	98.5	101.7
Nov	89.7	96.0	94.0	100.8	79.3	64.5	97.6	91.4	99.1	96.7	100.6
Dec	90.5	95.6	92.1	101.2	81.3	69.9	101.6	92.0	100.8	95.9	99.7
2021											
Jan	91.7	95.7	92.9	102.7	85.4	75.8	106.5	93.0	101.9	95.5	99.6
Feb	94.4	96.8	93.5	105.8	89.3	84.5	109.1	94.6	104.1	96.8	99.0
Mar	96.3	98.0	94.8	102.9	91.1	89.3	112.4	97.8	105.7	97.5	99.3
Apr	98.3	100.4	96.1	105.3	94.2	89.6	116.0	99.4	107.4	100.7	98.9
May	98.5	100.2	95.8	104.8	96.7	91.4	117.8	100.0	111.0	99.9	99.3
Percentage Change over same period of previous year (%)											
2018	3.2	-0.9	-	-1.7	-1.1	22.9	-2.7	2.3	1.9	-1.9	-1.5
2019	-1.4	0.1	-2.4	2.6	-9.4	-7.6	-2.9	-5.2	-1.3	1.8	1.9
2020	-7.0	-1.5	-3.0	0.8	-10.6	-31.0	4.9	-4.0	-0.8	-1.2	1.3
2020											
May	-10.1	0.3	-2.8	4.1	-11.6	-53.3	8.7	-6.4	-1.9	2.1	3.7
Jun	-7.4	-0.9	-3.9	1.4	-9.4	-36.3	7.9	-5.3	-1.0	-0.1	2.8
Jul	-7.3	-1.1	-3.0	-	-12.4	-33.3	0.4	-5.0	-0.1	-0.4	2.8
Aug	-8.2	-3.6	-3.3	-0.6	-12.8	-28.9	-2.0	-5.5	-1.2	-3.9	0.6
Sep	-9.4	-3.2	-0.9	-1.9	-9.3	-35.5	0.8	-4.8	-1.3	-3.5	0.2
Oct	-7.9	-3.0	-4.1	-2.8	-7.3	-30.5	3.4	-2.9	-0.3	-3.4	-1.0
Nov	-6.6	-3.0	-3.1	-1.6	-3.6	-23.5	2.8	-1.5	1.2	-4.1	-0.9
Dec	-5.9	-3.4	-3.8	-1.6	-0.4	-18.1	3.8	0.2	3.3	-5.2	-1.6
2021											
Jan	-4.5	-2.5	-2.1	-0.8	3.4	-13.8	6.8	2.2	5.1	-4.7	-1.1
Feb	-1.9	-3.0	-4.1	0.3	8.6	4.0	3.5	1.8	6.8	-5.1	-3.6
Mar	3.6	-3.2	-1.3	-3.1	10.5	50.3	1.5	4.8	8.6	-6.0	-5.9
Apr	9.6	-0.7	3.3	-2.0	14.9	106.1	8.9	7.8	11.2	-3.1	-6.4
May	9.6	-0.5	1.3	-1.8	15.8	99.3	11.8	10.4	14.5	-3.8	-5.8

NOTATIONS

- nes not elsewhere specified
- nil or negligible

NOTES

The Import and Export Price Indices report contains statistics that are the most recent available at the time of its preparation.

Some statistics, particularly those for the most recent time periods, are provisional and may be subject to revision in later issues.