



Import & Export Price Indices May 2022

www.singstat.gov.sg

IMPORT AND EXPORT PRICE INDICES, May 2022
ISSN 2591-7463

© Department of Statistics, Ministry of Trade & Industry, Republic of Singapore

Reproducing or quoting any part of this publication is permitted, provided this publication is accredited as the source. Please refer to the SingStat Website Terms of Use (<http://www.singstat.gov.sg/terms-of-use>) for more details on the conditions of use of this publication.

Import Price Index (2018 = 100) May 2022

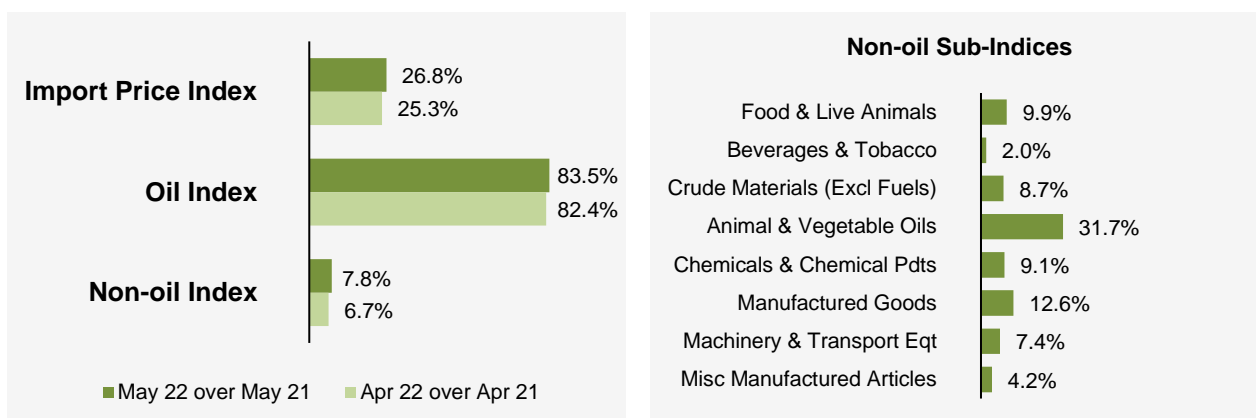
Month-on-Month Change



The Import Price Index rose 1.7% in May 2022, following the 2.2% increase in April 2022. The Oil index went up 3.2%, continuing from the 4.1% gain in the previous month. The Non-oil index increased 0.8% in May 2022, after the 1.2% rise in April 2022.

Among the Non-oil sub-indices, increases were led by the Chemicals & Chemical Products (1.6%) index, mainly on account of higher prices of organic chemicals, and the Machinery & Transport Equipment (0.9%) index. The increases were slightly moderated by the decrease in the Miscellaneous Manufactured Articles (-0.1%) index.

Year-on-Year Change

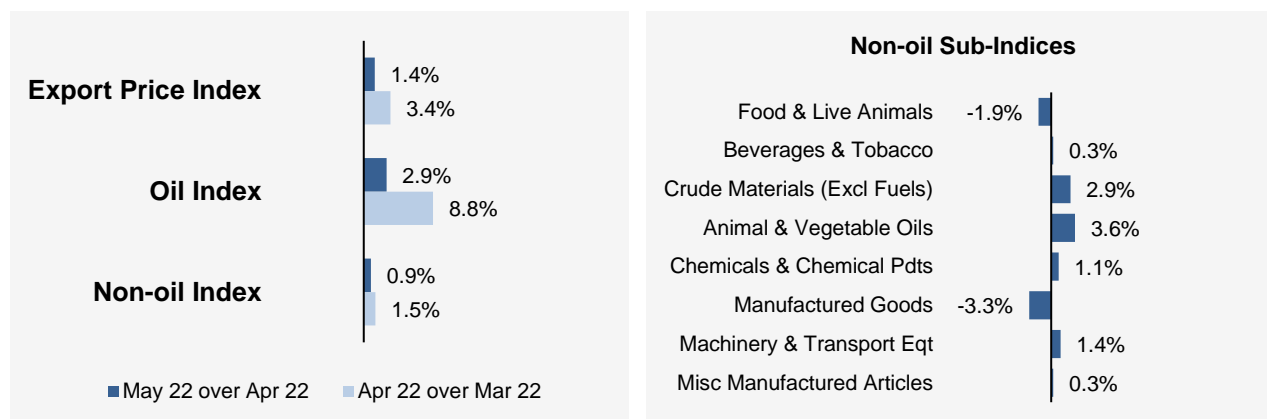


The Import Price Index rose 26.8% in May 2022 from a year ago, extending the 25.3% increase in April 2022. The Oil and Non-oil indices grew by 83.5% and 7.8% respectively.

All Non-oil sub-indices increased. Higher prices were registered for Animal & Vegetable Oils (31.7%), Manufactured Goods (12.6%), Food & Live Animals (9.9%), Chemicals & Chemical Products (9.1%), Crude Materials (8.7%), Machinery & Transport Equipment (7.4%), Miscellaneous Manufactured Articles (4.2%) and Beverages & Tobacco (2.0%).

Export Price Index (2018 = 100) May 2022

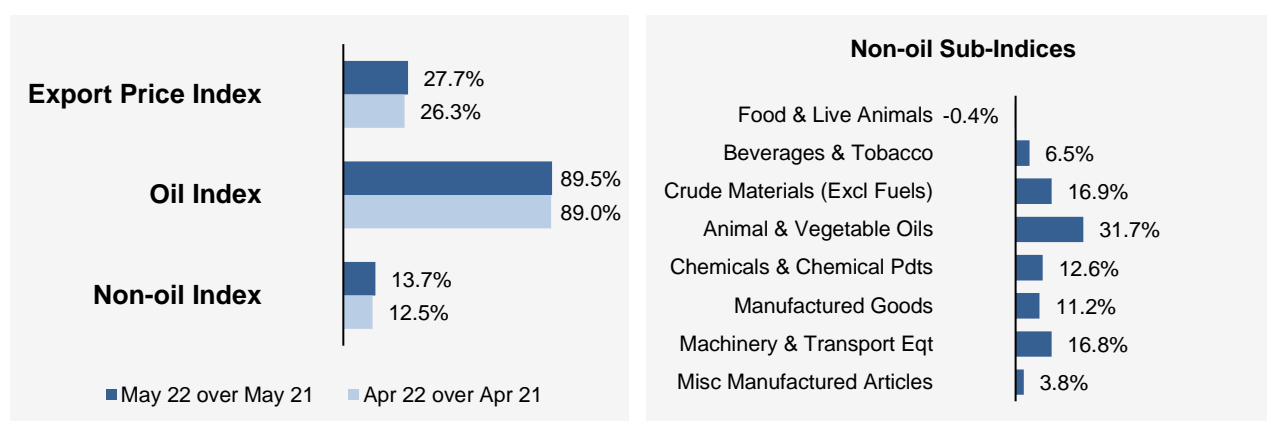
Month-on-Month Change



The Export Price Index increased 1.4% in May 2022, following the 3.4% rise in April 2022. The Oil index rose 2.9%, after the 8.8% increase in the previous month. The Non-oil index rose 0.9% in May 2022, adding to the 1.5% increase in April 2022.

Except for Manufactured Goods and Food & Live Animals, all Non-oil sub-indices rose. The increases were led by the Machinery & Transport Equipment (1.4%) and Chemicals & Chemical Products (1.1%) indices due primarily to higher prices of electrical machinery apparatus and organic chemicals respectively. The increases were partially offset by decreases in the Manufactured Goods (-3.3%) and Food & Live Animals (-1.9%) indices attributed mainly to lower prices of non-ferrous metals and miscellaneous food preparation respectively.

Year-on-Year Change



The Export Price Index increased 27.7% in May 2022 from a year ago, after the 26.3% gain in April 2022. The Oil and Non-oil indices went up 89.5% and 13.7% respectively.

Higher prices of Animal & Vegetable Oils (31.7%), Crude Materials (16.9%), Machinery & Transport Equipment (16.8%), Chemicals & Chemical Products (12.6%), Manufactured Goods (11.2%), Beverages & Tobacco (6.5%) and Miscellaneous Manufactured Articles (3.8%) were partially offset by lower prices of Food & Live Animals (-0.4%).

Technical Note

The **Import Price Index (IPI)** is used primarily as an indicator to track the price trends of imported goods into Singapore. Prices of imports, valued at CIF terms (cost, insurance and freight) are obtained monthly from major importers. The weighting pattern of the index is derived from import statistics for 2018.

The **Export Price Index (EPI)** measures changes in the price of all exports of merchandise from Singapore, including re-exports. In general, prices are obtained from major exporters of the selected commodities. Prices used in the index computation, are the prices of goods that physically leave Singapore's main ports of export; also termed as Free On Board (FOB) prices. The weights of the index are derived from the distribution of export by commodity in 2018.

Index Formula

The 2018-based series is compiled using the Laspeyres formula where the price and weight reference periods are aligned to the year 2018. The geometric mean formula has been adopted in the computation of unweighted elementary aggregate price indices. The arithmetic mean formula is applied in compiling indices at higher levels of aggregation where weights of specific sub-indices are available.

Measurement of Changes in Price Indices

Change over previous month compares the index of the month with that of the preceding month. Such comparisons measure the change in the price index between two consecutive months. They serve as useful short-term indicators of the price movements.

Change over same period of previous year measures change in the index over a twelve-month period. Such comparisons compare the movement in the price index between similar months in two consecutive years.

Linking the Old 2012-Based Price Index Series to the New 2018-Based Price Index Series

The IPI and EPI have been rebased from base year 2012 to base year 2018. To facilitate comparison of the historical price indices across base years, the old 2012-based series are linked to the new 2018-based series by re-scaling them via a Linked Coefficient. The Linked Coefficient is the ratio of the annual 2018-based index in 2018 to the annual 2012-based index in 2018.

Example : Linking the old Iron & Steel Index series for IPI prior to 2018, to the 2018-based Iron & Steel Index (2018=100)

1) Calculate the linked coefficient

Year	Iron & Steel Index (2012=100)	Iron & Steel Index (2018=100)	Linked Coefficient
2018	93.4	100.0	$100.0 \div 93.4 = 1.071$

2) Re-scaling the old series to the 2018-based series using the Linked Coefficient

Year	Month	Iron & Steel Index (2012=100)	Iron & Steel Index (2018=100)
2016	Dec	84.0	$84.0 \times 1.071 = 90.0$
2017	Jan	85.6	$85.6 \times 1.071 = 91.7$

Linking Method for Maintaining the Old Index Reference Period

To continue the old 2012-based index series going forward in time, re-scale the new 2018-based index series to the old base year 2012 level, via a Linked Coefficient. The Linked Coefficient is the ratio of the annual 2012-based index in 2018 to the annual 2018-based index in 2018.

Example : Linking the new 2018-based Iron & Steel Index series for IPI to the 2012-based Iron & Steel Index (2012=100)

1) Calculate the linked coefficient

Year	Iron & Steel Index (2018=100)	Iron & Steel Index (2012=100)	Linked Coefficient
2018	100.0	93.4	$93.4 \div 100.0 = 0.934$

2) Re-scaling the new series to the 2012-based series using the Linked Coefficient

Year	Month	Iron & Steel Index (2018=100)	Iron & Steel Index (2012=100)
2019	Jan	98.6	$98.6 \times 0.934 = 92.1$
2019	Feb	102.4	$102.4 \times 0.934 = 95.6$

Index Revision

The indices may be revised when late returns and amendments received from respondents are incorporated.

Dissemination of Data

The Import and Export Price Indices are available on the SingStat Website (www.singstat.gov.sg/tablebuilder). Excel tables for this month's report are available at <https://www.singstat.gov.sg/publications/economy/import-export-price-indices> or through the QR code below:



Import Price Index (2018 = 100) May 2022

Chart 1: Index

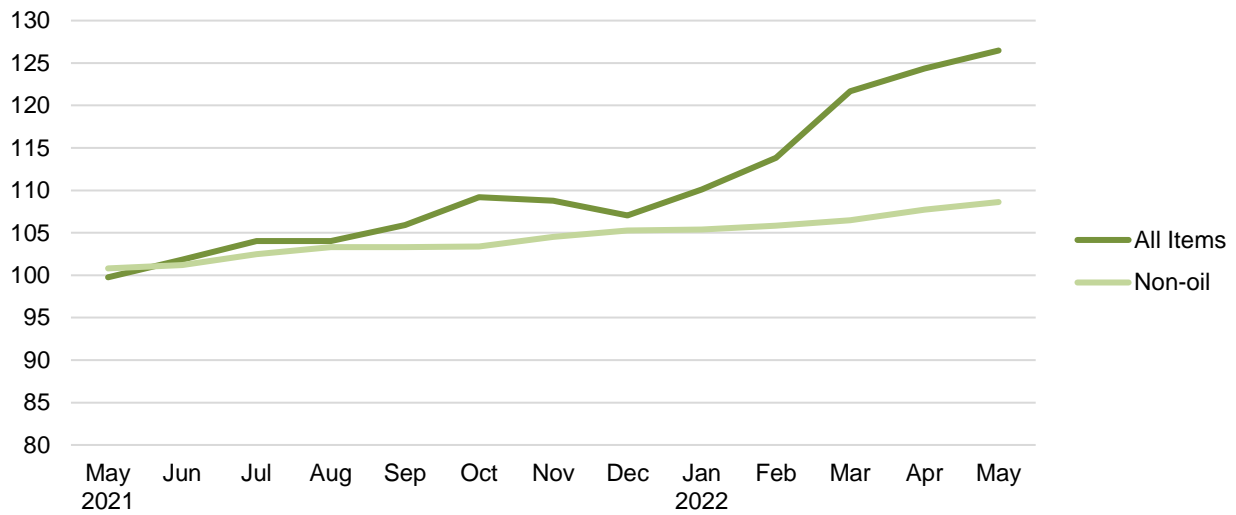


Chart 2: Month-on-Month Change

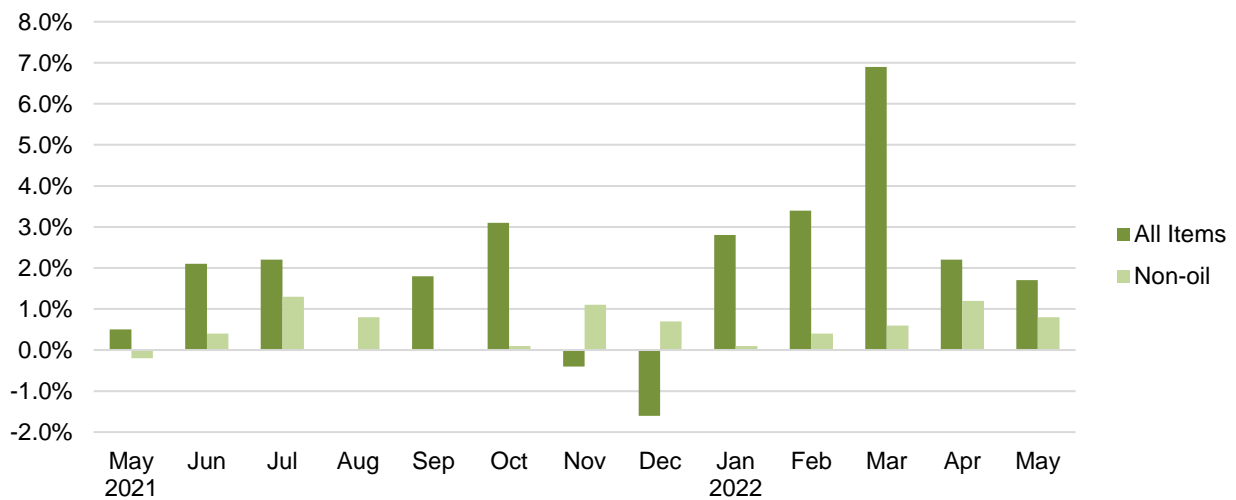
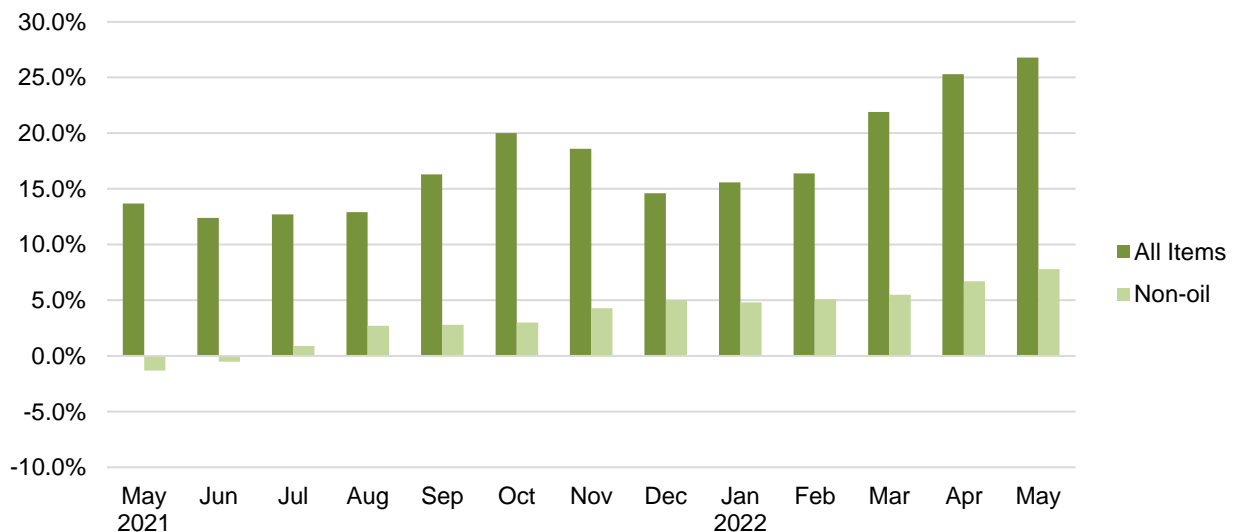


Chart 3: Year-on-Year Change



Export Price Index (2018 = 100) May 2022

Chart 4: Index

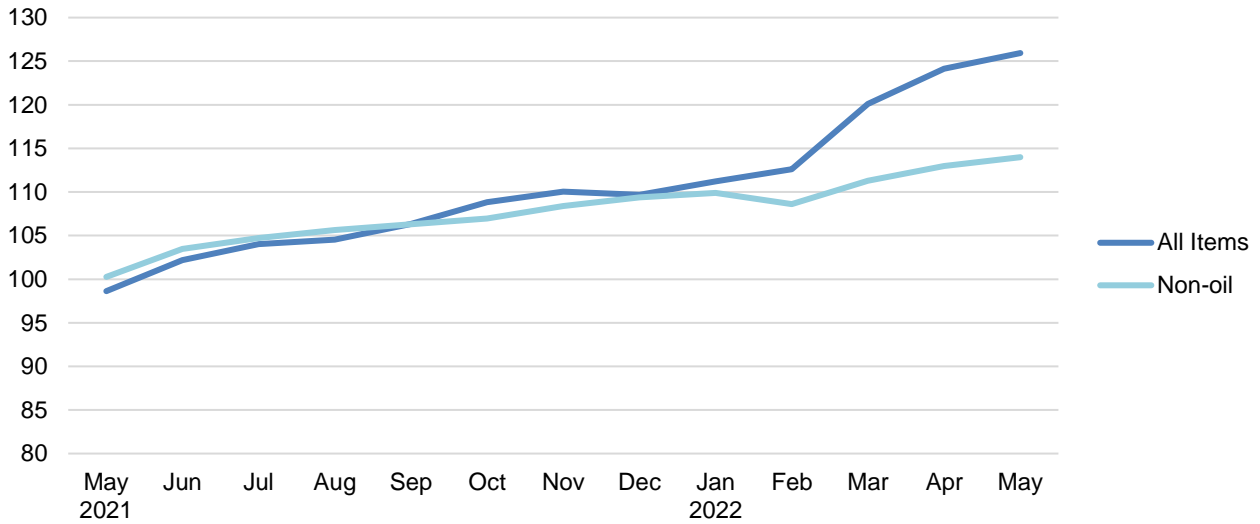


Chart 5: Month-on-Month Change

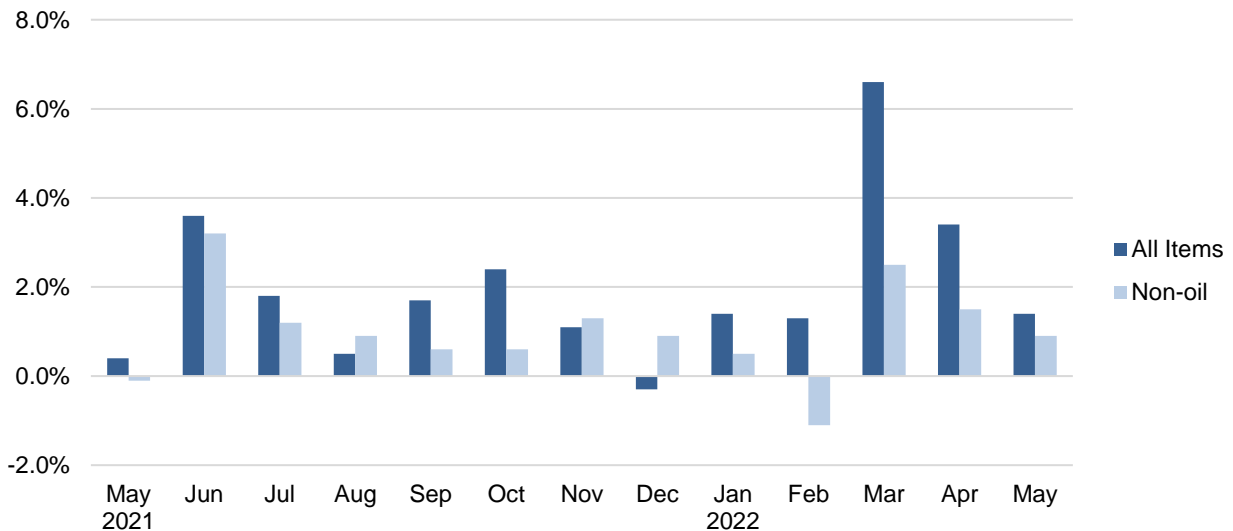


Chart 6: Year-on-Year Change

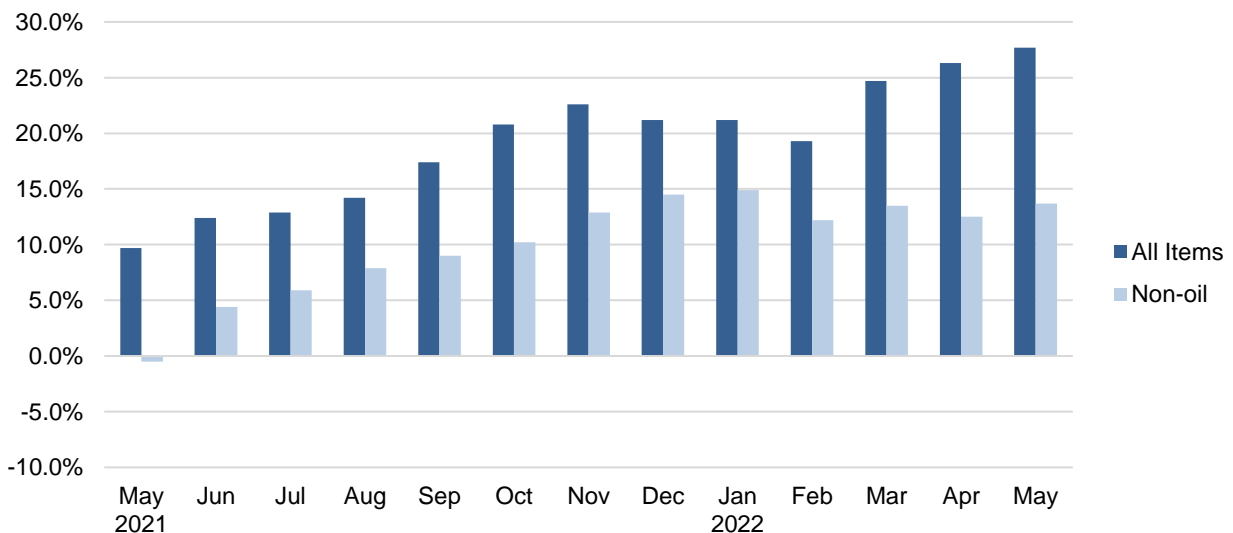


Table 1 Import Price Index

May 2022

Commodity section / division	Weights	Index (2018=100)			% Change		
		Mar 2022	Apr 2022	May 2022	Apr 2022	May 2022	May 2022
					Mar 2022	Apr 2022	May 2021
All Items	10,000	121.7	124.4	126.5	2.2	1.7	26.8
Non-oil Items	7,410	106.5	107.7	108.6	1.2	0.8	7.8
Food & Live Animals	247	111.7	112.9	114.2	1.1	1.1	9.9
Live animals	9	117.9	122.8	122.6	4.1	-0.1	19.3
Meat & meat preparations	31	112.9	115.1	114.5	1.9	-0.5	5.7
Dairy products & birds' eggs	30	130.8	132.8	137.8	1.5	3.8	21.3
Fish seafood & preparations	34	107.0	110.0	111.1	2.8	1.0	13.3
Cereals & cereal preparations	24	100.3	100.8	102.2	0.5	1.4	3.4
Vegetables & fruit	48	111.0	112.6	113.4	1.4	0.8	10.5
Sugar, sugar preparations & honey	9	124.8	124.5	125.9	-0.2	1.1	11.2
Coffee, tea, cocoa, spices & manufactures	28	106.4	104.3	106.2	-1.9	1.7	7.7
Animal feeding stuff (excl unmilled cereals)	4	109.1	113.0	113.2	3.5	0.2	10.2
Miscellaneous food preparations	31	106.4	106.5	106.4	0.1	-	1.7
Beverages & Tobacco	112	109.7	109.5	109.5	-0.2	-	2.0
Beverages	84	110.0	109.8	109.4	-0.2	-0.3	0.7
Tobacco & manufactures	28	108.6	108.6	110.0	-	1.2	6.2
Crude Materials (excl fuels)	84	109.9	110.2	111.9	0.2	1.6	8.7
Oil seeds & oleaginous fruits	2	124.3	124.4	130.3	0.1	4.7	7.4
Crude rubber	19	93.7	94.1	95.2	0.5	1.2	3.8
Cork & wood	3	128.0	130.5	130.5	1.9	-	32.1
Crude fertilizers & minerals	30	103.8	103.8	105.7	0.1	1.8	3.5
Metalliferous ores & metal scrap	17	138.3	138.3	141.7	-	2.4	17.4
Crude animal & vegetable materials nes	13	103.1	103.2	103.3	0.1	0.1	7.4
Mineral Fuels, Lubricants & Related Materials	2,590	165.2	172.0	177.6	4.1	3.2	83.5
Petroleum & products & related materials	2,431	168.2	173.7	179.0	3.3	3.1	83.1
Gas	159	120.0	145.9	155.4	21.6	6.5	91.6
Animal & Vegetable Oils, Fats & Waxes	27	185.7	193.2	199.2	4.0	3.1	31.7
Fixed vegetable fats & oils	27	185.7	193.2	199.2	4.0	3.1	31.7
Chemicals & Chemical Products	888	110.0	110.4	112.1	0.3	1.6	9.1
Organic chemicals	216	110.3	111.1	114.8	0.8	3.3	14.2
Inorganic chemicals	35	112.8	110.8	109.7	-1.8	-1.0	5.4
Dyeing, tanning & colouring materials	33	109.3	110.6	111.5	1.2	0.8	6.5
Medicinal & pharmaceutical products	101	105.6	105.4	105.7	-0.2	0.3	1.4
Essential oils & perfume; toilet cleaning products	147	111.7	111.6	111.7	-0.1	0.1	3.1
Plastics in primary forms	164	112.4	113.8	117.4	1.2	3.2	13.1
Plastics in non-primary forms	38	109.0	110.1	110.6	1.1	0.4	8.2
Chemical materials & products nes	154	108.0	107.6	108.2	-0.4	0.6	10.5
Manufactured Goods	505	119.0	120.6	120.9	1.3	0.3	12.6
Rubber manufactures nes	25	97.1	98.9	102.3	1.8	3.4	2.5
Paper manufactures	51	99.0	101.6	102.7	2.6	1.1	11.7
Textile manufactures	26	103.8	105.1	106.3	1.2	1.1	6.2
Non-metal mineral manufactures nes	60	113.6	116.1	119.1	2.1	2.6	14.7
Iron & steel	131	130.5	133.3	133.4	2.2	0.1	19.2
Non-ferrous metals	84	150.2	151.0	147.4	0.6	-2.4	14.1
Manufactures of metals nes	128	104.4	104.4	105.4	-0.1	0.9	6.1
Machinery & Transport Equipment	4,690	103.0	104.5	105.5	1.5	0.9	7.4
Power-generating machinery & equipment	526	120.3	120.8	121.8	0.4	0.8	8.3
Machinery specialized for particular industries	306	101.1	101.5	102.7	0.5	1.2	4.2
Metal working machinery	23	107.3	107.4	107.9	0.2	0.4	4.5
General industrial machinery	281	104.2	105.2	106.3	1.0	1.1	5.4
Office machines & data-processing machines	457	94.7	94.9	96.4	0.2	1.6	3.9
Telecommunication apparatus	390	89.5	89.8	90.6	0.2	0.9	5.1
Electrical machinery apparatus nes, electrical parts	2,542	103.3	105.8	106.7	2.5	0.8	9.3
Road vehicles	164	98.7	98.9	98.6	0.2	-0.4	-
Miscellaneous Manufactured Articles	857	109.8	110.2	110.1	0.4	-0.1	4.2
Prefab building, sanitary plumbing, lighting nes	12	105.7	105.7	105.7	-	-	-
Furniture, bedding, mattresses, cushions & others	26	110.2	109.6	109.8	-0.5	0.2	2.0
Travel goods, handbags & similar containers	54	117.2	117.2	117.7	-	0.5	10.8
Articles of apparel & clothing accessories	79	106.5	106.6	106.7	0.1	-	5.9
Footwear	24	104.7	104.6	103.9	-0.2	-0.6	-0.4
Professional scientific & controlling instruments	275	102.1	102.6	102.9	0.5	0.3	1.7
Photographic & optical goods nes; watches & clocks	106	111.2	110.8	111.0	-0.4	0.2	4.4
Miscellaneous manufactured articles nes	283	116.7	117.7	117.0	0.8	-0.6	5.4

Figures may not sum to total due to rounding.

Table 2 Export Price Index

May 2022

Commodity section / division	Weights	Index (2018=100)			% Change		
					Apr 2022	May 2022	May 2022
		Mar 2022	Apr 2022	May 2022	Mar 2022	Apr 2022	May 2021
All Items	10,000	120.1	124.1	125.9	3.4	1.4	27.7
Non-oil Items	8,022	111.3	113.0	114.0	1.5	0.9	13.7
Food & Live Animals	236	98.5	97.4	95.6	-1.1	-1.9	-0.4
Dairy products & birds' eggs	5	47.9	49.9	50.0	4.2	0.2	21.9
Fish seafood & preparations	9	102.1	102.2	103.4	0.1	1.1	22.0
Cereals & cereal preparations	7	101.6	102.9	102.8	1.3	-0.1	8.0
Vegetables & fruit	8	97.5	100.6	101.8	3.2	1.2	10.9
Sugar, sugar preparations & honey	3	108.7	108.8	108.7	0.1	-	4.0
Coffee, tea, cocoa, spices & manufactures	26	115.1	114.6	115.3	-0.4	0.6	5.2
Animal feeding stuff (excl unmilled cereals)	7	94.2	91.3	93.1	-3.1	2.0	-16.0
Miscellaneous food preparations	171	97.2	95.6	92.8	-1.7	-2.9	-2.8
Beverages & Tobacco	103	110.3	111.1	111.3	0.6	0.3	6.5
Beverages	75	113.3	114.1	114.1	0.7	-	7.6
Tobacco & manufactures	28	102.5	103.0	104.2	0.5	1.2	3.4
Crude Materials (excl fuels)	91	108.3	110.5	113.6	2.0	2.9	16.9
Crude rubber	35	86.8	87.7	99.6	1.1	13.5	24.0
Pulp and waste paper	26	110.7	115.0	114.2	3.9	-0.7	14.2
Metalliferous ores & metal scrap	26	135.5	137.7	133.8	1.6	-2.8	13.5
Crude animal & vegetable materials nes	4	105.0	104.4	103.0	-0.6	-1.4	9.6
Mineral Fuels, Lubricants & Related Materials	1,978	155.7	169.5	174.4	8.8	2.9	89.5
Petroleum & products & related materials	1,978	155.7	169.5	174.4	8.8	2.9	89.5
Animal & Vegetable Oils, Fats & Waxes	5	131.2	149.7	155.1	14.1	3.6	31.7
Fixed vegetable fats & oils	5	131.2	149.7	155.1	14.1	3.6	31.7
Chemicals & Chemical Products	1,525	109.4	111.5	112.7	1.9	1.1	12.6
Organic chemicals	428	118.4	120.4	122.6	1.6	1.9	20.8
Inorganic chemicals	14	153.9	164.1	168.4	6.6	2.6	35.8
Dyeing, tanning & colouring materials	37	109.1	111.1	110.8	1.8	-0.2	13.6
Medicinal & pharmaceutical products	250	96.0	95.5	95.6	-0.5	0.1	-1.2
Essential oils & perfume; toilet cleaning products	232	102.2	103.4	104.5	1.2	1.0	4.4
Plastics in primary forms	355	111.2	115.8	116.7	4.1	0.8	15.4
Plastics in non-primary forms	29	113.9	114.4	113.1	0.5	-1.2	-0.8
Chemical materials & products nes	181	108.2	109.7	111.2	1.4	1.3	16.3
Manufactured Goods	318	126.8	127.8	123.5	0.8	-3.3	11.2
Rubber manufactures nes	22	102.9	103.8	104.3	0.8	0.5	6.1
Paper manufactures	41	102.2	104.3	100.7	2.1	-3.4	2.4
Textile manufactures	19	95.8	93.1	92.8	-2.8	-0.3	-5.6
Non-metal mineral manufactures nes	14	97.7	97.9	99.0	0.2	1.1	2.3
Iron & steel	66	147.6	151.6	152.2	2.7	0.4	33.8
Non-ferrous metals	67	180.1	180.0	160.5	-0.1	-10.8	13.8
Manufactures of metals nes	89	99.6	99.6	100.0	-	0.4	-0.7
Machinery & Transport Equipment	4,836	113.3	115.2	116.8	1.7	1.4	16.8
Power-generating machinery & equipment	418	100.7	101.2	102.3	0.5	1.0	3.4
Machinery specialized for particular industries	437	105.9	114.9	115.7	8.5	0.7	20.7
Metal working machinery	25	99.5	99.5	99.7	-0.1	0.2	1.7
General industrial machinery	212	103.8	104.2	104.3	0.4	0.1	1.8
Office machines & data-processing machines	467	102.0	102.6	104.0	0.6	1.3	1.9
Telecommunication apparatus	366	91.0	92.0	91.9	1.1	-0.1	3.6
Electrical machinery apparatus nes, electrical parts	2,814	122.1	123.6	125.8	1.2	1.8	23.9
Road vehicles	98	107.8	107.8	108.2	-0.1	0.4	2.7
Miscellaneous Manufactured Articles	908	102.0	102.7	103.0	0.7	0.3	3.8
Prefab building, sanitary plumbing, lighting nes	3	114.9	113.0	113.8	-1.6	0.8	-4.2
Furniture, bedding, mattresses, cushions & others	5	105.7	106.0	106.9	0.3	0.9	1.7
Travel goods, handbags & similar containers	37	104.6	105.7	103.6	1.0	-1.9	4.1
Articles of apparel & clothing accessories	40	109.7	112.8	111.3	2.8	-1.3	-0.6
Footwear	14	114.5	115.0	122.3	0.5	6.4	30.4
Professional scientific & controlling instruments	365	92.4	93.0	93.8	0.6	1.0	5.5
Photographic & optical goods nes; watches & clocks	98	105.6	105.3	105.9	-0.3	0.6	2.9
Miscellaneous manufactured articles nes	345	109.2	110.2	109.9	0.9	-0.2	2.2

Figures may not sum to total due to rounding.

Table 3 Import Price Index

Section	All Items	Non-oil Items	Food & Live Animals	Beverages & Tobacco	Crude Materials	Mineral Fuels	Animal & Vegetable Oils, Fats & Waxes	Chemicals & Chemical Products	Manu- factured Goods	Machinery & Transport Equipment	Misc. Manu- factured Articles
Weights	10,000	7,410	247	112	84	2,590	27	888	505	4,690	857
Index (2018=100)											
2018	100.0	100.0	100.0	100.0	100.0	100.0	100.0	100.0	100.0	100.0	100.0
2019	99.0	100.9	101.5	100.4	101.2	93.4	90.4	98.6	99.9	101.3	102.0
2020	92.0	101.3	102.9	97.9	101.8	65.6	103.1	97.4	99.8	101.3	106.0
2021	102.7	102.3	105.4	106.4	104.7	104.0	149.6	103.6	109.9	99.9	106.4
2021											
May	99.8	100.8	103.9	107.4	103.0	96.8	151.3	102.8	107.4	98.2	105.7
Jun	101.8	101.2	105.0	107.2	105.4	103.7	148.4	102.8	109.6	98.4	106.1
Jul	104.0	102.5	105.6	107.6	105.6	108.4	152.1	104.8	112.1	99.6	106.9
Aug	104.0	103.3	106.1	107.4	107.0	106.1	154.3	105.5	112.6	100.6	107.2
Sep	105.9	103.3	105.8	107.0	106.4	113.4	155.6	105.5	113.6	100.5	106.9
Oct	109.2	103.4	106.7	104.3	106.4	125.7	162.8	106.6	114.9	100.3	106.9
Nov	108.8	104.5	107.5	103.8	108.0	121.0	167.1	107.5	115.9	101.7	107.1
Dec	107.1	105.3	109.6	103.7	110.5	112.2	167.1	107.4	116.7	102.5	107.9
2022											
Jan	110.1	105.4	110.4	110.3	108.5	123.6	164.2	108.1	116.3	102.5	107.8
Feb	113.8	105.8	110.5	110.3	108.9	136.7	172.7	108.4	117.0	102.9	108.3
Mar	121.7	106.5	111.7	109.7	109.9	165.2	185.7	110.0	119.0	103.0	109.8
Apr	124.4	107.7	112.9	109.5	110.2	172.0	193.2	110.4	120.6	104.5	110.2
May	126.5	108.6	114.2	109.5	111.9	177.6	199.2	112.1	120.9	105.5	110.1
Percentage Change over same period of previous year (%)											
2019	-1.0	0.9	1.5	0.4	1.2	-6.6	-9.6	-1.4	-0.1	1.3	2.0
2020	-7.0	0.3	1.4	-2.5	0.6	-29.8	14.0	-1.2	-0.2	-	3.8
2021	11.6	1.0	2.4	8.7	2.9	58.5	45.1	6.3	10.1	-1.4	0.4
2021											
May	13.7	-1.3	-0.5	10.6	1.1	107.9	60.6	6.4	7.2	-4.1	-2.0
Jun	12.4	-0.5	2.0	10.5	3.9	76.3	53.6	6.5	10.1	-3.6	-0.6
Jul	12.7	0.9	2.2	14.5	3.6	64.4	55.1	6.9	12.4	-1.9	0.2
Aug	12.9	2.7	3.2	14.5	6.5	56.2	51.5	8.0	13.5	0.2	0.7
Sep	16.3	2.8	3.4	13.0	5.1	76.4	49.5	8.5	14.5	0.4	0.5
Oct	20.0	3.0	5.2	9.7	4.5	96.0	50.2	9.6	15.5	0.2	1.1
Nov	18.6	4.3	5.6	9.3	6.4	79.1	47.4	10.4	15.6	2.0	1.6
Dec	14.6	5.0	7.2	7.8	8.9	51.6	39.2	10.1	15.9	2.8	3.0
2022											
Jan	15.6	4.8	6.6	2.9	7.8	54.6	31.6	9.9	14.5	2.9	2.3
Feb	16.4	5.1	5.8	3.1	9.6	53.0	33.0	9.1	13.2	3.7	2.3
Mar	21.9	5.5	7.9	2.5	7.7	71.1	34.3	8.9	13.4	3.8	4.4
Apr	25.3	6.7	9.2	2.4	7.3	82.4	34.8	8.2	13.9	5.7	4.4
May	26.8	7.8	9.9	2.0	8.7	83.5	31.7	9.1	12.6	7.4	4.2

Table 4 Export Price Index

Section	All Items	Non-oil Items	Food & Live Animals	Beverages & Tobacco	Crude Materials	Mineral Fuels	Animal & Vegetable Oils, Fats & Waxes	Chemicals & Chemical Products	Manu- factured Goods	Machinery & Transport Equipment	Misc. Manu- factured Articles
Weights	10,000	8,022	236	103	91	1,978	5	1,525	318	4,836	908
Index (2018=100)											
2018	100.0	100.0	100.0	100.0	100.0	100.0	100.0	100.0	100.0	100.0	100.0
2019	98.6	100.1	97.6	102.6	90.6	92.4	97.1	94.8	98.7	101.8	101.9
2020	91.7	98.6	94.7	103.4	81.0	63.7	101.9	91.1	97.9	100.6	103.2
2021	102.1	103.0	95.1	105.4	98.9	98.3	119.4	100.3	110.5	104.4	99.7
2021											
May	98.6	100.3	95.9	104.6	97.2	92.0	117.8	100.0	111.1	100.0	99.3
Jun	102.2	103.5	94.6	104.5	96.5	96.9	117.9	100.3	110.6	105.3	99.5
Jul	104.0	104.7	95.1	106.1	102.8	101.1	120.5	102.0	112.5	106.4	99.9
Aug	104.5	105.6	93.5	107.2	103.1	100.1	120.6	101.6	113.0	108.0	100.3
Sep	106.3	106.3	95.9	105.7	102.7	106.5	124.6	101.9	113.2	109.2	99.0
Oct	108.8	106.9	95.6	105.6	106.7	116.5	126.7	103.1	115.2	109.5	99.7
Nov	110.0	108.4	97.4	107.7	108.2	116.7	127.6	104.4	115.4	111.1	101.1
Dec	109.7	109.4	95.2	106.8	109.2	110.9	133.7	105.0	115.8	112.6	101.2
2022											
Jan	111.2	109.9	96.6	109.0	105.3	116.5	132.0	105.7	120.1	112.9	101.2
Feb	112.6	108.6	93.3	110.0	106.3	128.7	127.9	106.0	122.6	110.7	100.9
Mar	120.1	111.3	98.5	110.3	108.3	155.7	131.2	109.4	126.8	113.3	102.0
Apr	124.1	113.0	97.4	111.1	110.5	169.5	149.7	111.5	127.8	115.2	102.7
May	125.9	114.0	95.6	111.3	113.6	174.4	155.1	112.7	123.5	116.8	103.0
Percentage Change over same period of previous year (%)											
2019	-1.4	0.1	-2.4	2.6	-9.4	-7.6	-2.9	-5.2	-1.3	1.8	1.9
2020	-7.0	-1.5	-3.0	0.8	-10.6	-31.0	4.9	-4.0	-0.8	-1.2	1.3
2021	11.3	4.5	0.4	1.9	22.1	54.3	17.2	10.1	12.9	3.8	-3.3
2021											
May	9.7	-0.5	1.4	-1.9	16.5	100.7	11.8	10.4	14.7	-3.7	-5.8
Jun	12.4	4.4	0.8	0.7	16.4	67.9	15.0	11.6	14.0	3.6	-4.4
Jul	12.9	5.9	-	3.9	29.9	57.1	21.6	13.9	14.8	4.9	-4.0
Aug	14.2	7.9	-1.2	5.1	32.7	52.2	22.5	13.5	15.1	8.2	-3.7
Sep	17.4	9.0	-1.1	4.5	29.7	70.3	26.7	13.7	15.1	10.2	-4.5
Oct	20.8	10.2	2.5	5.2	34.7	87.5	29.9	13.8	17.3	11.2	-1.9
Nov	22.6	12.9	3.6	6.9	36.4	81.1	30.7	14.3	16.5	14.9	0.4
Dec	21.2	14.5	3.4	5.6	34.3	58.7	31.6	14.2	14.9	17.5	1.5
2022											
Jan	21.2	14.9	3.9	6.1	23.3	53.7	24.0	13.7	17.9	18.2	1.6
Feb	19.3	12.2	-0.2	4.0	19.0	52.3	17.3	12.1	17.8	14.4	1.9
Mar	24.7	13.5	3.9	7.2	18.9	74.3	16.8	11.8	20.0	16.2	2.7
Apr	26.3	12.5	1.3	5.5	17.2	89.0	29.1	12.2	18.9	14.3	3.9
May	27.7	13.7	-0.4	6.5	16.9	89.5	31.7	12.6	11.2	16.8	3.8

NOTATIONS

- nes not elsewhere specified
- nil or negligible

NOTES

The Import and Export Price Indices report contains statistics that are the most recent available at the time of its preparation.

Some statistics, particularly those for the most recent time periods, are provisional and may be subject to revision in later issues.

SINGAPORE DEPARTMENT OF STATISTICS COMMUNICATIONS & INFORMATION SERVICES

Singapore Department of Statistics (DOS) offers official statistics, data insights, visualisations and statistical resources through user-friendly platforms.



SingStat Website

Visit this convenient gateway to access latest data and statistical information.

Data across the six major themes of Economy, Industry, Trade & Investment, Population, Households and Society, covering some 200 topics such as Gross Domestic Product, Consumer Price Index, Retail Sales and Food & Beverage Services Indices, Producer Price Indices, Business Expectations, Business Receipts Index, Trade in Services, Direct Investment, Population Indicators, Household Income, Household Expenditure, Deaths and Life Expectancy, Births and Fertility, Marriages and Divorces, and more.

Publications

- Information Papers which highlight conceptual and methodological changes and improvements in official statistics.
- Occasional Papers which present statistical trends and observations on important social and economic issues to stimulate discussion and research.
- eBook of Statistics** which consolidates latest information and resources on key economic and socio-demographic domains.
- Singapore in Figures** which allows exploration of key economic and socio-demographic statistics through interactive dashboards.
- Statistics Singapore Newsletter** which features articles on latest key statistical activities, recent survey findings and methodological improvements.

Visualisations such as infographics and interactive dashboards with latest data, and videos to explain data and statistical concepts.

Data for Businesses with data tools to empower data-driven business decisions, giving firms insights on their customers, industries and business performance.

Advance Release Calendar providing dates of upcoming data releases in the next six months.



SingStat Table Builder

Access for free over 2,000 data tables across various economic and socio-demographic domains from 70 public sector agencies. Watch the [video](#) to find out how you can easily access and customise data tables.



SingStat Mobile App

Download the free app for fast and convenient access to commonly used statistics from your mobile devices. More than 200 charts are available across 28 data categories for easy access to visualise data trends.



SingStat Express

Subscribe to receive alerts on the latest press releases, occasional/ information papers and newsletters.



Find us on social media!



Telegram



YouTube



LinkedIn

For statistical enquiries, you may reach us at:

✉ email: info@singstat.gov.sg or submit the [Data Request Form](#)

☎ phone: 1800-323 8118* (Local users) or (65) 6332 7738 (Overseas users)

* Calls from mobile telephone lines to 1800 local toll-free number may be subject to mobile airtime charges as imposed by the relevant mobile service provider.