

IMPORT & EXPORT PRICE INDICES

November 2018

IMPORT AND EXPORT PRICE INDICES, November 2018
ISSN 2591-7463

© Department of Statistics, Ministry of Trade & Industry, Republic of Singapore

Reproducing or quoting any part of this publication is permitted, provided this publication is accredited as the source. Please refer to the Statistics Singapore Website Terms of Use (<http://www.singstat.gov.sg/terms-of-use>) for more details on the conditions of use of this publication.

Statistical activities conducted by the Singapore Department of Statistics are governed by the provisions of the Statistics Act (Cap. 317). The Act guarantees the confidentiality of information collected from individuals and companies. It spells out the legislative authority and responsibility of the Chief Statistician. The Act is available in the Department's Website (www.singstat.gov.sg).

IMPORT PRICE INDICES (2012 = 100)

November 2018

Import Price Index

Change over previous month

The Import Price Index fell 4.1 per cent in November 2018, in contrast to the 1.7 per cent increase in October 2018. The Oil index decreased 12.9 per cent, reversing the 5.5 per cent rise in the previous month, attributed mainly to lower prices of crude petroleum and diesel fuel & fuel oils. The Non-oil index declined 0.4 per cent in November 2018, in contrast to the 0.2 per cent increase in October 2018.

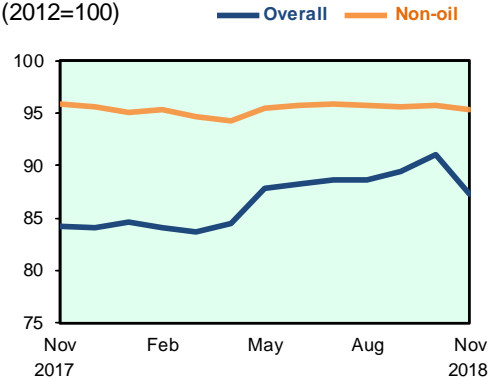
All Non-oil sub-indices registered declines except for the Beverages & Tobacco index which was unchanged. The decreases were led by the Chemicals & Chemical Products (-0.9 per cent), Manufactured Goods (-0.9 per cent) and Machinery & Transport Equipment (-0.2 per cent) indices.

Change over same period of previous year

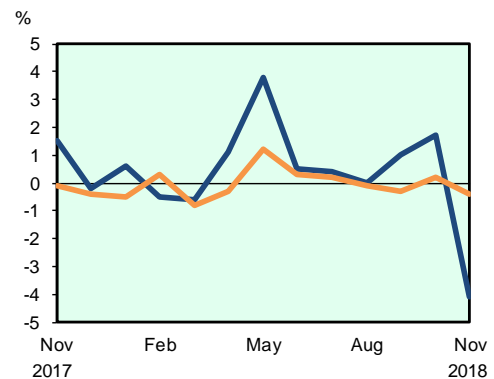
The Import Price Index rose 3.6 per cent in November 2018 from a year ago, following the 9.7 per cent increase in October 2018. The Oil index increased 17.0 per cent, while the Non-oil index fell 0.6 per cent.

For the Non-oil sub-indices, lower prices of Animal & Vegetable Oils (-19.9 per cent), Machinery & Transport Equipment (-1.6 per cent), Crude Materials (-1.0 per cent) and Miscellaneous Manufactured Articles (-0.8 per cent) were partially offset by higher prices of Chemicals & Chemical Products (4.2 per cent), Manufactured Goods (2.5 per cent), Beverages & Tobacco (0.9 per cent) and Food & Live Animals (0.2 per cent).

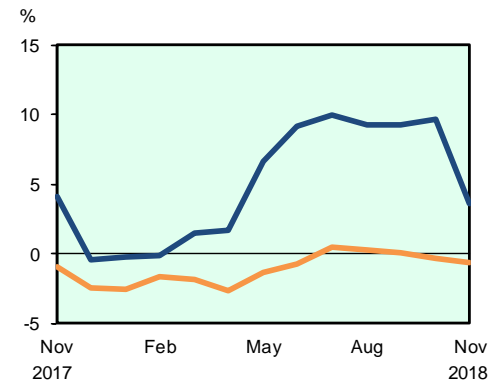
Import Price Index
(2012=100)



Change over previous month



Change over same period of previous year



EXPORT PRICE INDICES (2012 = 100)

November 2018

Export Price Index

Change over previous month

The Export Price Index decreased 2.7 per cent in November 2018, in contrast to the 1.4 per cent increase in October 2018. The Oil index declined 10.1 per cent, reversing the 4.2 per cent gain in the previous month, due to lower prices of bunker fuel and diesel fuel & fuel oils. The Non-oil index decreased 0.5 per cent in November 2018, after rising 0.7 per cent in the previous month.

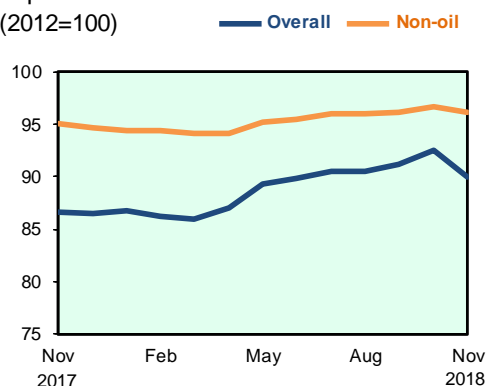
For the Non-oil sub-indices, declines led by the Chemicals & Chemical Products (-1.2 per cent) index, due mainly to lower prices of organic chemicals, and the Machinery & Transport Equipment (-0.6 per cent) index were partially moderated by increases in the Miscellaneous Manufactured Articles (0.7 per cent) and Beverages & Tobacco (0.4 per cent) indices.

Change over same period of previous year

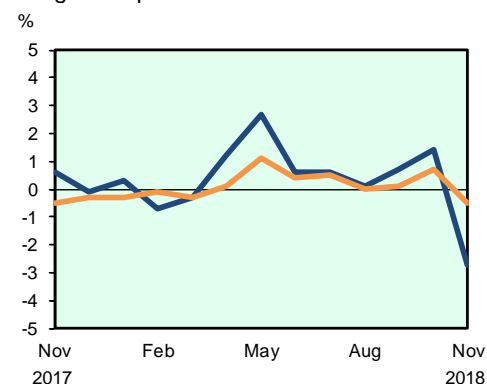
The Export Price Index rose 3.9 per cent in November 2018 over the previous year, after the 7.5 per cent increase in October 2018. The Oil and Non-oil indices rose 15.3 per cent and 1.2 per cent respectively.

Among the Non-oil sub-indices, increases in the Chemicals & Chemical Products (3.1 per cent), Manufactured Goods (1.7 per cent), Food & Live Animals (1.7 per cent), Miscellaneous Manufactured Articles (1.2 per cent), Beverages & Tobacco (0.8 per cent), Machinery & Transport Equipment (0.7 per cent) and Animal & Vegetable Oils (0.3 per cent) indices were partially offset by the decline in the Crude Materials (-0.5 per cent) index.

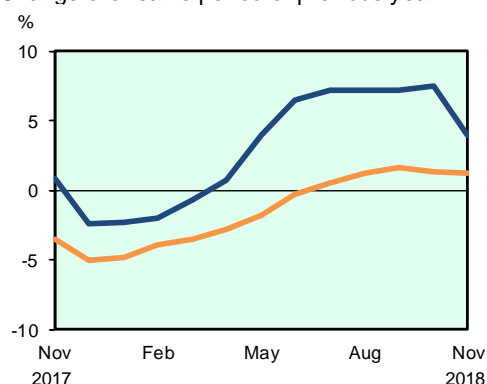
Export Price Index
(2012=100)



Change over previous month



Change over same period of previous year



TECHNICAL NOTE

The *Import Price Index (IPI)* is used primarily as an indicator to track the price trends of imported goods into Singapore. Prices of imports, valued at cif (cost, insurance and freight) are obtained monthly from major importers. The weighting pattern of the index is derived from import statistics for 2012.

The *Export Price Index (EPI)* measures changes in the price of all exports of merchandise from Singapore, including re-exports. In general, prices are obtained from major exporters of the selected commodities. Prices used in the index computation, are the prices of goods that physically leave Singapore's main ports of export; also termed as free on board prices. The weights of the index are derived from the distribution of export by commodity in 2012.

Index Formula

The 2012-based series is compiled using the Laspeyres formula where the price and weight reference periods are aligned to the year 2012. The geometric mean (GM) formula has been adopted in the computation of unweighted elementary aggregate price indices. The arithmetic mean (AM) formula is applied in compiling indices at higher levels of aggregation where weights of specific sub-indices are available

An Information Paper on the Rebasing of Import and Export Price Indices (2012=100) is available on the department's website at <https://www.singstat.gov.sg/ppi#Producer-and-International-Trade-Prices>.

Measurement of Changes in Price Indices

Change over previous month compares the index of the month with that of the preceding month. Such comparisons measure the change in the price index between two consecutive months. They serve as useful short-term indicators of the price movements.

Change over same period of previous year measures change in the index over a twelve-month period. Such comparisons compare the movement in the price index between similar months in two consecutive years.

Index Revision

The indices may be revised when late returns and amendments received from respondents are incorporated.

Dissemination of Data

The Import and Export Price Indices are available on the SingStat Website (www.singstat.gov.sg/tablebuilder). Excel tables for this month's report are available at <https://www.singstat.gov.sg/publications/economy/import-export-price-indices> or through the QR code below:



Table 1 Import Price Index

November 2018

Commodity section / division	Weights	Index (2012=100)			% Change		
		Sep 2018	Oct 2018	Nov 2018	Oct 2018	Nov 2018	Nov 2018
					Sep 2018	Oct 2018	Nov 2017
All Items	10,000	89.5	91.0	87.3	1.7	-4.1	3.6
Non-oil Items	6,684	95.6	95.8	95.4	0.2	-0.4	-0.6
Food & Live Animals	215	100.6	101.1	100.9	0.5	-0.2	0.2
Live animals	9	86.8	89.5	88.7	3.1	-0.9	-8.6
Meat & meat preparations	26	99.0	98.9	98.5	-0.2	-0.4	-3.9
Dairy products & birds' eggs	28	100.0	98.9	96.9	-1.0	-2.0	-2.2
Fish seafood & preparations	28	111.7	112.7	112.6	0.9	-0.2	1.1
Cereals & cereal preparations	21	103.3	104.2	103.1	0.8	-1.0	9.1
Vegetables & fruit	37	109.1	109.5	110.3	0.4	0.7	2.5
Sugar, sugar preparations & honey	12	79.1	82.1	80.7	3.8	-1.7	-6.0
Coffee, tea, cocoa, spices & manufactures	28	90.6	90.1	91.5	-0.6	1.6	-5.0
Animal feeding stuff (excl unmilled cereals)	3	110.7	110.3	109.6	-0.3	-0.6	1.3
Miscellaneous food preparations	23	100.8	101.9	102.4	1.0	0.5	7.2
Beverages & Tobacco	86	105.7	105.6	105.6	-0.1	-	0.9
Beverages	66	102.8	102.5	102.5	-0.3	0.1	-0.8
Tobacco & manufactures	20	115.4	115.8	115.4	0.3	-0.3	6.2
Crude Materials (excl fuels)	83	83.2	83.8	82.8	0.8	-1.2	-1.0
Hides, skins & furskins raw	1	86.3	87.6	87.5	1.5	-	0.3
Oil seeds & oleaginous fruits	1	96.2	96.5	96.4	0.3	-0.1	1.3
Crude rubber	17	60.4	60.4	58.6	-	-2.9	2.3
Cork & wood	5	91.1	91.0	89.9	-0.1	-1.2	1.2
Textile fibres & their wastes	3	88.8	88.8	89.4	-	0.6	-5.9
Crude fertilizers & minerals	26	79.9	81.0	80.5	1.4	-0.6	1.0
Metalliferous ores & metal scrap	21	90.5	92.3	91.1	1.9	-1.3	-5.5
Crude animal & vegetable materials nes	9	108.6	107.0	105.9	-1.5	-1.0	0.4
Mineral Fuels, Lubricants & Related Materials	3,316	77.3	81.5	71.0	5.5	-12.9	17.0
Petroleum & products & related materials	3,152	76.7	80.8	69.8	5.4	-13.7	16.5
Gas	164	89.0	94.0	93.2	5.6	-0.9	25.7
Animal & Vegetable Oils, Fats & Waxes	37	66.7	64.8	60.7	-2.8	-6.3	-19.9
Fixed vegetable fats & oils	36	66.1	64.2	60.0	-3.0	-6.6	-20.6
Animal & vegetable oils, fats & waxes nes	1	83.7	83.5	83.5	-0.2	-0.1	-1.0
Chemicals & Chemical Products	694	95.2	95.6	94.8	0.4	-0.9	4.2
Organic chemicals	188	90.8	90.3	86.7	-0.5	-4.0	2.7
Inorganic chemicals	34	93.9	92.0	95.4	-2.0	3.7	2.0
Dyeing, tanning & colouring materials	28	90.4	91.5	90.1	1.2	-1.6	4.1
Medicinal & pharmaceutical products	70	86.6	86.5	86.3	-0.2	-0.2	5.4
Essential oils & perfume; toilet cleaning products	75	105.5	106.0	106.1	0.4	0.1	3.2
Plastics in primary forms	147	97.4	96.9	95.3	-0.5	-1.7	2.3
Plastics in non-primary forms	31	102.2	101.9	102.6	-0.3	0.7	2.5
Chemical materials & products nes	121	97.8	101.7	103.5	3.9	1.8	9.6
Manufactured Goods	635	96.2	96.0	95.2	-0.1	-0.9	2.5
Rubber manufactures nes	32	93.8	94.1	93.8	0.3	-0.3	-
Paper manufactures	50	110.1	110.1	108.8	-0.1	-1.1	6.3
Textile manufactures	31	101.2	101.4	101.1	0.2	-0.3	1.0
Non-metal mineral manufactures nes	83	95.3	95.3	95.4	-	0.1	2.1
Iron & steel	179	96.9	95.5	94.6	-1.5	-0.9	5.3
Non-ferrous metals	116	87.5	88.6	86.6	1.2	-2.3	-3.9
Manufactures of metals nes	144	97.4	97.6	97.0	0.3	-0.6	3.8
Machinery & Transport Equipment	4,205	94.9	95.0	94.8	0.1	-0.2	-1.6
Power-generating machinery & equipment	298	127.8	128.3	127.9	0.4	-0.3	4.8
Machinery specialized for particular industries	352	95.0	95.0	94.8	-	-0.2	2.6
Metal working machinery	31	95.7	97.3	96.9	1.7	-0.3	2.3
General industrial machinery	328	100.0	99.9	99.9	-0.1	-	0.2
Office machines & data-processing machines	495	100.3	100.6	100.4	0.3	-0.1	0.8
Telecommunication apparatus	422	67.1	67.1	67.3	-	0.4	-4.1
Electrical machinery apparatus nes, electrical parts	2,116	93.2	93.2	92.9	0.1	-0.3	-4.2
Road vehicles	163	102.5	102.4	102.6	-	0.2	1.1
Miscellaneous Manufactured Articles	729	99.4	100.1	99.7	0.8	-0.4	-0.8
Prefab building, sanitary plumbing, lighting nes	16	101.2	101.9	101.6	0.7	-0.3	0.3
Furniture, bedding, mattresses, cushions & others	25	103.0	102.9	102.9	-	-0.1	1.9
Travel goods, handbags & similar containers	25	116.4	115.9	115.8	-0.5	-	0.7
Articles of apparel & clothing accessories	64	108.9	109.0	108.4	0.1	-0.6	2.1
Footwear	16	105.2	105.1	105.2	-	-	0.6
Professional scientific & controlling instruments	207	111.1	112.5	112.2	1.2	-0.3	1.0
Photographic & optical goods nes; watches & clocks	99	94.3	94.1	93.7	-0.2	-0.5	-0.9
Miscellaneous manufactured articles nes	277	87.9	89.0	88.5	1.2	-0.5	-3.7

Table 2 Export Price Index

November 2018

Commodity section / division	Weights	Index (2012=100)			% Change		
		Sep 2018	Oct 2018	Nov 2018	Oct 2018	Nov 2018	Nov 2018
					Sep 2018	Oct 2018	Nov 2017
All Items	10,000	91.2	92.5	90.0	1.4	-2.7	3.9
Non-oil Items	7,395	96.1	96.7	96.2	0.7	-0.5	1.2
Food & Live Animals	124	99.5	100.2	100.3	0.8	0.1	1.7
Meat & meat preparations	2	102.2	102.2	99.3	-	-2.8	-5.4
Dairy products & birds' eggs	7	75.8	75.0	75.1	-1.0	0.1	-5.4
Fish seafood & preparations	9	110.8	112.8	113.8	1.9	0.9	9.2
Cereals & cereal preparations	7	113.7	113.8	114.1	0.1	0.2	-0.8
Vegetables & fruit	8	120.1	119.8	118.3	-0.2	-1.3	-22.0
Sugar, sugar preparations & honey	6	92.9	93.1	93.1	0.2	-0.1	-2.8
Coffee, tea, cocoa, spices & manufactures	29	94.0	96.5	96.0	2.6	-0.5	0.9
Animal feeding stuff (excl unmilled cereals)	6	103.1	103.5	103.5	0.3	-	-
Miscellaneous food preparations	50	99.1	99.3	99.9	0.2	0.7	9.3
Beverages & Tobacco	87	106.2	106.1	106.6	-0.1	0.4	0.8
Beverages	66	100.9	100.6	101.3	-0.3	0.7	-0.1
Tobacco & manufactures	21	123.1	123.6	123.4	0.4	-0.2	3.4
Crude Materials (excl fuels)	60	78.2	78.3	78.0	0.1	-0.3	-0.5
Crude rubber	15	48.3	47.4	45.6	-1.8	-3.8	-11.2
Cork & wood	2	103.7	102.4	102.4	-1.2	-0.1	1.2
Pulp and waste paper	6	116.2	121.1	123.7	4.1	2.2	12.7
Textile fibres & their wastes	3	81.2	81.2	81.2	-	-	6.4
Metalliferous ores & metal scrap	29	79.9	79.5	79.3	-0.5	-0.2	-2.2
Crude animal & vegetable materials nes	5	96.5	97.4	97.4	0.9	-	2.3
Mineral Fuels, Lubricants & Related Materials	2,605	77.2	80.4	72.3	4.2	-10.1	15.3
Petroleum & products & related materials	2,595	77.2	80.5	72.4	4.2	-10.1	15.4
Gas	10	71.9	67.3	59.7	-6.4	-11.3	-3.7
Animal & Vegetable Oils, Fats & Waxes	8	87.4	87.2	87.3	-0.2	0.1	0.3
Animal oils & fats	1	92.5	92.2	105.2	-0.3	14.0	9.6
Fixed vegetable fats & oils	5	75.9	75.6	75.0	-0.4	-0.8	-5.2
Animal & vegetable oils, fats & waxes nes	2	116.4	116.4	116.4	-	-	9.6
Chemicals & Chemical Products	1,344	97.0	97.1	95.9	0.1	-1.2	3.1
Organic chemicals	498	91.1	91.3	89.2	0.3	-2.4	3.4
Inorganic chemicals	13	92.6	93.6	93.8	1.1	0.3	-
Dyeing, tanning & colouring materials	32	98.7	96.9	96.0	-1.9	-0.9	2.7
Medicinal & pharmaceutical products	228	92.2	92.6	92.3	0.4	-0.4	0.1
Essential oils & perfume; toilet cleaning products	127	109.8	109.9	109.7	0.1	-0.2	-1.2
Plastics in primary forms	289	101.7	101.7	100.1	-	-1.6	6.6
Plastics in non-primary forms	29	101.1	99.1	97.4	-1.9	-1.8	2.2
Chemical materials & products nes	128	103.9	104.2	105.5	0.3	1.2	4.9
Manufactured Goods	381	97.2	98.2	97.3	1.0	-0.9	1.7
Rubber manufactures nes	26	102.2	102.4	102.1	0.2	-0.3	1.4
Wood & cork manufactures (excl furniture)	2	122.0	122.4	123.3	0.3	0.7	11.0
Paper manufactures	40	101.3	101.7	101.5	0.4	-0.2	2.3
Textile manufactures	20	99.6	99.6	100.5	-	0.9	0.8
Non-metal mineral manufactures nes	31	94.4	94.5	94.1	0.1	-0.4	0.6
Iron & steel	96	88.6	91.2	90.6	2.9	-0.6	9.3
Non-ferrous metals	76	100.2	101.4	98.2	1.1	-3.1	-4.0
Manufactures of metals nes	90	100.5	100.5	100.2	-	-0.3	-
Machinery & Transport Equipment	4,595	94.9	95.7	95.1	0.8	-0.6	0.7
Power-generating machinery & equipment	188	108.0	107.8	107.3	-0.1	-0.5	0.6
Machinery specialized for particular industries	397	94.6	94.9	93.2	0.4	-1.8	-0.7
Metal working machinery	28	111.6	111.5	109.2	-0.1	-2.1	0.2
General industrial machinery	243	102.2	102.3	102.4	0.1	-	-
Office machines & data-processing machines	680	98.1	98.8	98.8	0.8	-	1.8
Telecommunication apparatus	336	73.7	73.8	73.8	0.1	0.1	-8.9
Electrical machinery apparatus nes, electrical parts	2,582	93.9	95.0	94.3	1.1	-0.7	1.9
Road vehicles	141	116.0	115.8	115.7	-0.2	-0.1	-0.9
Miscellaneous Manufactured Articles	796	100.7	101.7	102.4	1.1	0.7	1.2
Prefab building, sanitary plumbing, lighting nes	6	139.4	137.7	136.9	-1.2	-0.6	13.3
Furniture, bedding, mattresses, cushions & others	5	114.0	114.1	113.7	0.1	-0.3	5.4
Travel goods, handbags & similar containers	11	134.8	136.8	138.7	1.5	1.4	12.5
Articles of apparel & clothing accessories	33	102.8	105.1	106.2	2.3	1.0	2.9
Footwear	8	102.0	101.9	102.0	-	0.1	0.3
Professional scientific & controlling instruments	264	105.9	108.8	111.1	2.8	2.1	4.6
Photographic & optical goods nes; watches & clocks	86	92.5	92.6	92.6	0.1	-	-2.2
Miscellaneous manufactured articles nes	383	96.9	96.8	96.5	-	-0.3	-1.4

Table 3 Import Price Index

Section	All Items	Non-oil Items	Food & Live Animals	Beverages & Tobacco	Crude Materials	Mineral Fuels	Animal & Vegetable Oils, Fats & Waxes	Chemicals & Chemical Products	Manufactured Goods	Machinery & Transport Equipment	Misc. Manufactured Articles
Weights	10,000	6,684	215	86	83	3,316	37	694	635	4,205	729
Index (2012=100)											
2014	94.5	97.3	104.2	102.1	93.4	88.8	82.1	97.9	97.7	96.8	97.4
2015	82.5	97.7	101.5	104.7	88.0	52.0	70.1	92.0	94.2	98.7	100.5
2016	78.1	95.7	99.0	104.4	81.8	42.8	76.0	88.1	87.7	97.3	101.3
2017	82.7	96.3	100.6	105.1	84.0	55.4	78.8	90.8	91.6	97.0	101.2
2017											
Nov	84.2	95.9	100.7	104.6	83.7	60.6	75.8	91.0	92.9	96.4	100.5
Dec	84.0	95.6	100.8	104.5	83.3	60.8	72.7	91.7	92.7	96.0	99.6
2018											
Jan	84.6	95.1	99.5	103.8	83.4	63.3	74.0	91.0	92.7	95.4	99.4
Feb	84.1	95.4	99.4	103.9	83.6	61.4	73.7	92.0	93.2	95.7	99.3
Mar	83.6	94.6	97.2	103.8	83.7	61.4	72.7	92.2	93.2	94.6	99.1
Apr	84.5	94.3	97.2	103.9	83.9	64.8	72.3	92.7	93.9	93.9	99.3
May	87.8	95.4	98.2	104.3	84.4	72.3	72.1	93.9	95.6	95.0	99.7
Jun	88.2	95.7	98.6	105.2	85.1	73.1	70.4	95.0	96.1	95.2	99.6
Jul	88.6	95.9	100.0	105.7	83.9	73.8	68.7	95.0	96.4	95.5	99.6
Aug	88.6	95.8	100.8	105.7	83.0	74.1	67.6	94.8	96.4	95.3	99.5
Sep	89.5	95.6	100.6	105.7	83.2	77.3	66.7	95.2	96.2	94.9	99.4
Oct	91.0	95.8	101.1	105.6	83.8	81.5	64.8	95.6	96.0	95.0	100.1
Nov	87.3	95.4	100.9	105.6	82.8	71.0	60.7	94.8	95.2	94.8	99.7
Percentage Change over same period of previous year (%)											
2015	-12.6	0.4	-2.6	2.5	-5.8	-41.5	-14.6	-6.0	-3.6	2.0	3.2
2016	-5.3	-2.0	-2.5	-0.3	-7.1	-17.8	8.5	-4.3	-7.0	-1.4	0.8
2017	5.8	0.6	1.7	0.7	2.7	29.5	3.7	3.1	4.5	-0.3	-0.1
2017											
Nov	4.1	-0.9	-0.3	-0.3	0.4	24.3	-6.1	1.6	3.0	-1.7	-1.8
Dec	-0.4	-2.5	-1.4	-1.1	-2.4	6.9	-14.8	-0.2	1.4	-3.4	-2.7
2018											
Jan	-0.2	-2.6	-2.0	-1.9	-2.7	8.2	-14.7	-2.2	1.1	-3.1	-3.2
Feb	-0.1	-1.7	-1.6	-1.6	-3.2	5.4	-13.8	-0.2	1.6	-2.1	-2.8
Mar	1.5	-1.9	-3.2	-1.1	-1.5	13.7	-11.2	0.9	2.0	-2.7	-2.5
Apr	1.7	-2.7	-2.9	-1.0	-1.0	16.9	-8.5	1.8	3.4	-4.2	-2.7
May	6.6	-1.4	-2.1	-0.9	0.7	35.7	-10.3	3.7	5.5	-3.1	-1.7
Jun	9.1	-0.7	-1.8	0.1	3.0	47.5	-9.8	5.9	6.2	-2.4	-1.7
Jul	10.0	0.5	-0.5	0.8	1.6	46.1	-9.6	7.2	6.8	-1.1	-0.9
Aug	9.2	0.3	0.3	0.2	-	41.9	-10.3	6.3	5.4	-0.9	-1.1
Sep	9.2	0.1	-0.4	0.3	-0.7	41.1	-13.9	6.0	4.6	-1.0	-1.4
Oct	9.7	-0.3	0.6	0.8	-	43.8	-16.0	4.8	3.2	-1.5	-0.6
Nov	3.6	-0.6	0.2	0.9	-1.0	17.0	-19.9	4.2	2.5	-1.6	-0.8

Table 4 Export Price Index

Section	All Items	Non-oil Items	Food & Live Animals	Beverages & Tobacco	Crude Materials	Mineral Fuels	Animal & Vegetable Oils, Fats & Waxes	Chemicals & Chemical Products	Manufactured Goods	Machinery & Transport Equipment	Misc. Manufactured Articles
Weights	10,000	7,395	124	87	60	2,605	8	1,344	381	4,595	796
Index (2012=100)											
2014	95.0	97.3	101.5	100.2	84.0	88.6	90.4	100.3	99.3	96.9	93.6
2015	88.5	99.8	103.6	107.2	74.8	56.3	84.6	97.5	96.3	101.2	97.8
2016	83.7	97.1	100.7	109.4	69.8	45.6	84.6	92.5	92.9	98.2	101.4
2017	86.1	96.2	98.6	107.5	80.2	57.3	89.0	93.3	95.4	96.1	102.0
2017											
Nov	86.6	95.0	98.6	105.7	78.5	62.7	87.1	93.0	95.7	94.5	101.1
Dec	86.5	94.7	98.2	105.2	78.8	63.4	86.6	93.8	95.3	93.9	100.2
2018											
Jan	86.8	94.4	99.1	104.9	79.4	65.2	85.8	94.4	96.2	93.3	99.5
Feb	86.2	94.4	98.0	105.4	79.8	63.1	85.5	94.6	96.7	93.2	99.1
Mar	86.0	94.1	97.6	105.3	79.4	62.8	85.6	94.0	95.9	93.0	99.2
Apr	87.0	94.2	96.7	104.0	79.5	66.7	85.6	94.1	96.8	93.1	99.2
May	89.3	95.2	96.9	105.7	80.6	72.7	86.2	95.3	97.6	94.1	99.8
Jun	89.9	95.5	97.0	106.1	80.5	73.9	85.6	95.9	97.8	94.4	100.2
Jul	90.5	96.0	98.1	106.3	80.8	74.8	88.1	96.7	97.7	94.7	101.2
Aug	90.5	96.0	99.2	106.7	78.8	75.2	87.6	96.7	97.6	94.7	100.8
Sep	91.2	96.1	99.5	106.2	78.2	77.2	87.4	97.0	97.2	94.9	100.7
Oct	92.5	96.7	100.2	106.1	78.3	80.4	87.2	97.1	98.2	95.7	101.7
Nov	90.0	96.2	100.3	106.6	78.0	72.3	87.3	95.9	97.3	95.1	102.4
Percentage Change over same period of previous year (%)											
2015	-6.9	2.6	2.1	7.0	-11.0	-36.4	-6.4	-2.8	-3.0	4.4	4.5
2016	-5.4	-2.7	-2.8	2.0	-6.7	-19.0	-	-5.2	-3.6	-3.0	3.6
2017	2.9	-0.9	-2.2	-1.7	14.9	25.7	5.2	0.9	2.7	-2.1	0.7
2017											
Nov	0.8	-3.5	-3.3	-4.6	5.9	25.0	-0.1	-0.2	0.4	-5.3	-1.3
Dec	-2.4	-5.0	-4.3	-5.9	-1.6	10.0	-3.2	-2.1	-1.3	-6.5	-2.9
2018											
Jan	-2.3	-4.8	-0.7	-5.0	-4.4	9.5	-6.6	-0.2	-	-6.6	-4.4
Feb	-2.0	-3.9	-1.6	-4.3	-4.5	7.1	-8.9	-0.4	1.4	-5.3	-4.2
Mar	-0.7	-3.5	-1.0	-3.2	-4.8	13.7	-8.4	-1.0	0.6	-4.7	-3.5
Apr	0.7	-2.8	-3.3	-4.2	-2.5	18.2	-7.0	0.1	1.8	-3.9	-3.5
May	3.9	-1.8	-2.8	-2.0	1.0	32.5	-4.0	1.9	2.6	-3.1	-2.7
Jun	6.5	-0.3	-2.4	-2.3	3.1	42.5	-2.4	3.8	4.0	-1.5	-1.8
Jul	7.2	0.5	0.9	-0.5	4.6	41.5	1.3	5.4	3.2	-0.9	-0.6
Aug	7.2	1.2	2.4	-	-0.2	36.8	2.0	5.8	2.3	0.1	-0.5
Sep	7.2	1.6	2.7	0.3	-1.9	33.3	1.9	5.6	1.4	0.9	-0.4
Oct	7.5	1.3	2.3	0.2	-1.2	35.7	0.2	4.3	2.1	0.5	0.5
Nov	3.9	1.2	1.7	0.8	-0.5	15.3	0.3	3.1	1.7	0.7	1.2

NOTATIONS

nes not elsewhere specified
- nil or negligible

NOTES

The Import and Export Price Indices report contains statistics that are the most recent available at the time of its preparation.

Some statistics, particularly those for the most recent time periods, are provisional and may be subject to revision in later issues.