



# Import & Export Price Indices November 2019

**IMPORT AND EXPORT PRICE INDICES, November 2019**  
**ISSN 2591-7463**

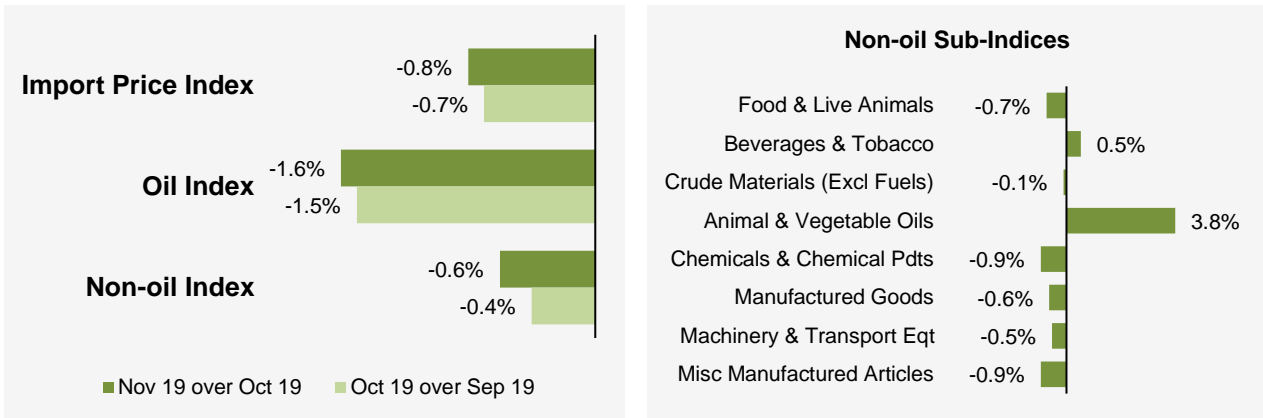
© Department of Statistics, Ministry of Trade & Industry, Republic of Singapore

Reproducing or quoting any part of this publication is permitted, provided this publication is accredited as the source. Please refer to the Statistics Singapore Website Terms of Use (<http://www.singstat.gov.sg/terms-of-use>) for more details on the conditions of use of this publication.

Statistical activities conducted by the Singapore Department of Statistics are governed by the provisions of the Statistics Act (Cap. 317). The Act guarantees the confidentiality of information collected from individuals and companies. It spells out the legislative authority and responsibility of the Chief Statistician. The Act is available in the Department's Website ([www.singstat.gov.sg](http://www.singstat.gov.sg)).

# Import Price Index (2018 = 100) November 2019

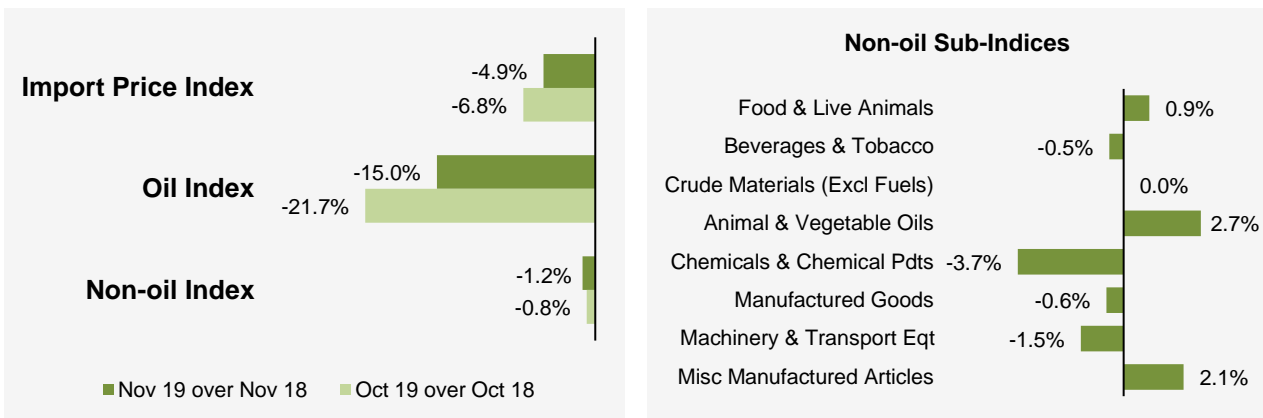
## Month-on-Month Change



The Import Price Index fell 0.8% in November 2019, extending the 0.7% decrease in October 2019. The Oil index declined 1.6%, following the 1.5% decrease in the previous month. The Non-oil index fell 0.6%, after the 0.4% decline in October 2019.

For the Non-oil sub-indices, declines were led by the Miscellaneous Manufactured Articles (-0.9%) and Machinery & Transport Equipment (-0.5%) indices. The decreases were partially offset by increases in the Animal & Vegetable Oils (3.8%) index, attributed mainly to higher crude palm oil prices, and the Beverages & Tobacco (0.5%) index.

## Year-on-Year Change

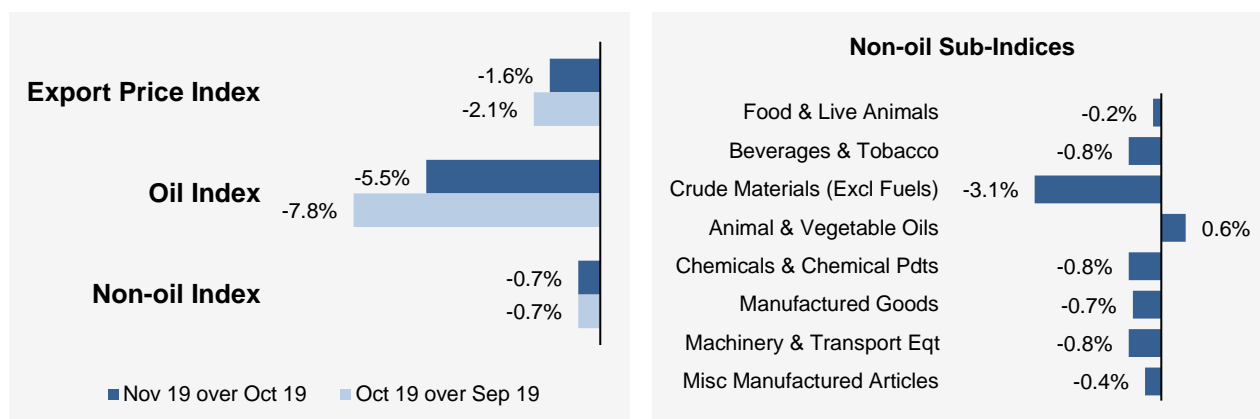


The Import Price Index fell 4.9% in November 2019 from a year ago, extending the 6.8% decrease in October 2019. The Oil and Non-oil indices fell 15.0% and 1.2% respectively.

For the Non-oil sub-indices, lower prices of Chemicals & Chemical Products (-3.7%), Machinery & Transport Equipment (-1.5%), Manufactured Goods (-0.6%), and Beverages & Tobacco (-0.5%) were partially offset by higher prices of Animal & Vegetable Oils (2.7%), Miscellaneous Manufactured Articles (2.1%) and Food & Live Animals (0.9%).

## Export Price Index (2018 = 100) November 2019

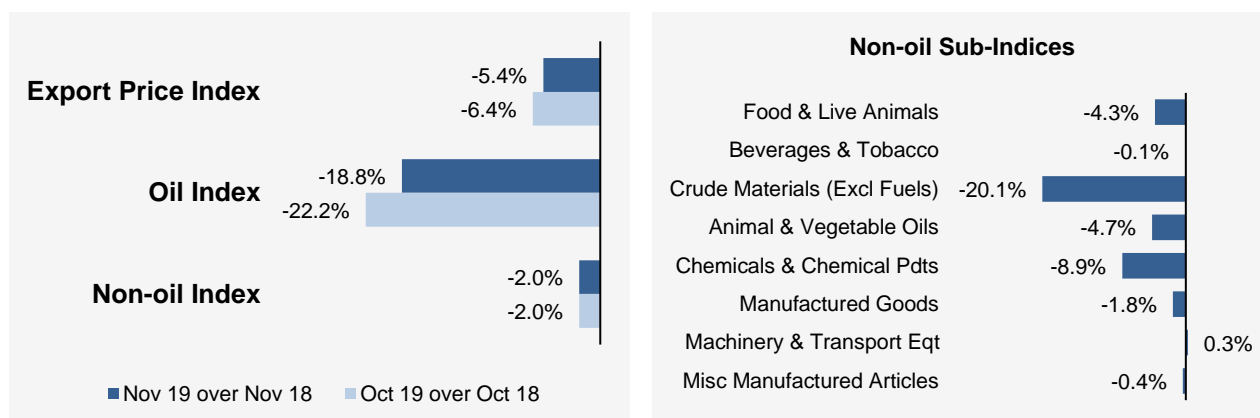
### Month-on-Month Change



The Export Price Index decreased 1.6% in November 2019, following the 2.1% decline in October 2019. The Oil index went down 5.5%, extending the 7.8% decrease in the previous month. The Non-oil index decreased 0.7%, as with the previous month.

Among the Non-oil sub-indices, decreases led by the Machinery & Transport Equipment (-0.8%), Chemicals & Chemical Products (-0.8%) and Miscellaneous Manufactured Articles (-0.4%) indices were partially moderated by the increase in the Animal & Vegetable Oils (0.6%) index.

### Year-on-Year Change



The Export Price Index fell 5.4% in November 2019 over the previous year, following the 6.4% decrease in October 2019. The Oil and Non-oil indices declined 18.8% and 2.0% respectively.

For the Non-oil sub-indices, lower prices of Crude Materials (-20.1%), Chemicals & Chemical Products (-8.9%), Animal & Vegetable Oils (-4.7%), Food & Live Animals (-4.3%), Manufactured Goods (-1.8%), Miscellaneous Manufactured Articles (-0.4%) and Beverages & Tobacco (-0.1%) were partially offset by the higher price of Machinery & Transport Equipment (0.3%).

## Technical Note

The **Import Price Index (IPI)** is used primarily as an indicator to track the price trends of imported goods into Singapore. Prices of imports, valued at cif (cost, insurance and freight) are obtained monthly from major importers. The weighting pattern of the index is derived from import statistics for 2018.

The **Export Price Index (EPI)** measures changes in the price of all exports of merchandise from Singapore, including re-exports. In general, prices are obtained from major exporters of the selected commodities. Prices used in the index computation, are the prices of goods that physically leave Singapore's main ports of export; also termed as free on board prices. The weights of the index are derived from the distribution of export by commodity in 2018.

### Index Formula

The 2018-based series is compiled using the Laspeyres formula where the price and weight reference periods are aligned to the year 2018. The geometric mean formula has been adopted in the computation of unweighted elementary aggregate price indices. The arithmetic mean formula is applied in compiling indices at higher levels of aggregation where weights of specific sub-indices are available.

### Measurement of Changes in Price Indices

*Change over previous month* compares the index of the month with that of the preceding month. Such comparisons measure the change in the price index between two consecutive months. They serve as useful short-term indicators of the price movements.

*Change over same period of previous year* measures change in the index over a twelve-month period. Such comparisons compare the movement in the price index between similar months in two consecutive years.

### Linking the Old 2012-Based Price Index Series to the New 2018-Based Price Index Series

The IPI and EPI have been rebased from base year 2012 to base year 2018. To facilitate comparison of the historical price indices across base years, the old 2012-based series are linked to the new 2018-based series by re-scaling them via a Linked Coefficient. The Linked Coefficient is the ratio of the annual 2018-based index in 2018 to the annual 2012-based index in 2018.

Example : Linking the old Iron & Steel Index series for IPI prior to 2018, to the 2018-based Iron & Steel Index (2018=100)

1) Calculate the linked coefficient

Year	Iron & Steel Index (2012=100)	Iron & Steel Index (2018=100)	Linked Coefficient
2018	93.4	100.0	$100.0 \div 93.4 = 1.071$

2) Re-scaling the old series to the 2018-based series using the Linked Coefficient

Year	Month	Iron & Steel Index (2012=100)	Iron & Steel Index (2018=100)
2016	Dec	84.0	$84.0 \times 1.071 = 90.0$
2017	Jan	85.6	$85.6 \times 1.071 = 91.7$

### Linking Method for Maintaining the Old Index Reference Period

To continue the old 2012-based index series going forward in time, re-scale the new 2018-based index series to the old base year 2012 level, via a Linked Coefficient. The Linked Coefficient is the ratio of the annual 2012-based index in 2018 to the annual 2018-based index in 2018.

Example : Linking the new 2018-based Iron & Steel Index series for IPI to the 2012-based Iron & Steel Index (2012=100)

1) Calculate the linked coefficient

Year	Iron & Steel Index (2018=100)	Iron & Steel Index (2012=100)	Linked Coefficient
2018	100.0	93.4	$93.4 \div 100.0 = 0.934$

2) Re-scaling the new series to the 2012-based series using the Linked Coefficient

Year	Month	Iron & Steel Index (2018=100)	Iron & Steel Index (2012=100)
2019	Jan	98.6	$98.6 \times 0.934 = 92.1$
2019	Feb	102.4	$102.4 \times 0.934 = 95.6$

### Index Revision

The indices may be revised when late returns and amendments received from respondents are incorporated.

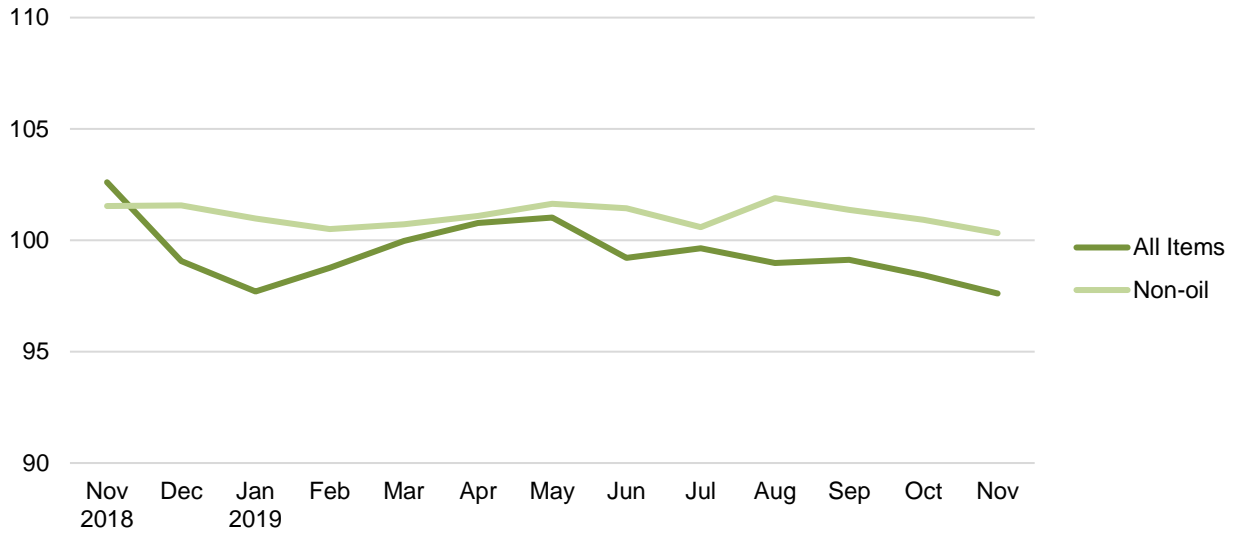
### Dissemination of Data

The Import and Export Price Indices are available on the SingStat Website ([www.singstat.gov.sg/tablebuilder](http://www.singstat.gov.sg/tablebuilder)). Excel tables for this month's report are available at <https://www.singstat.gov.sg/publications/economy/import-export-price-indices> or through the QR code below:

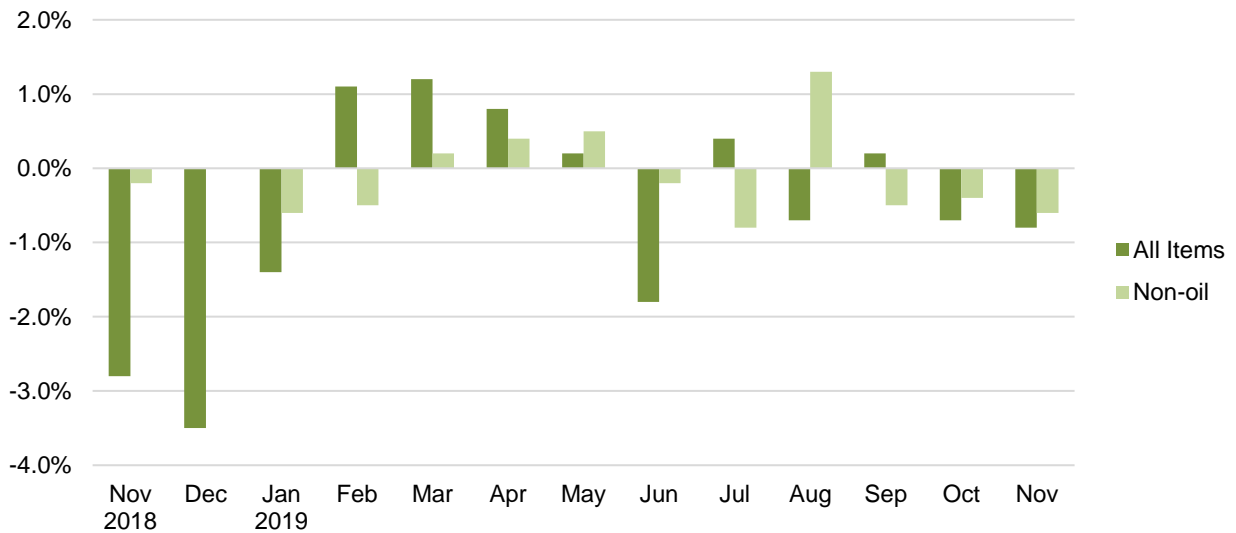


## Import Price Index (2018 = 100) November 2019

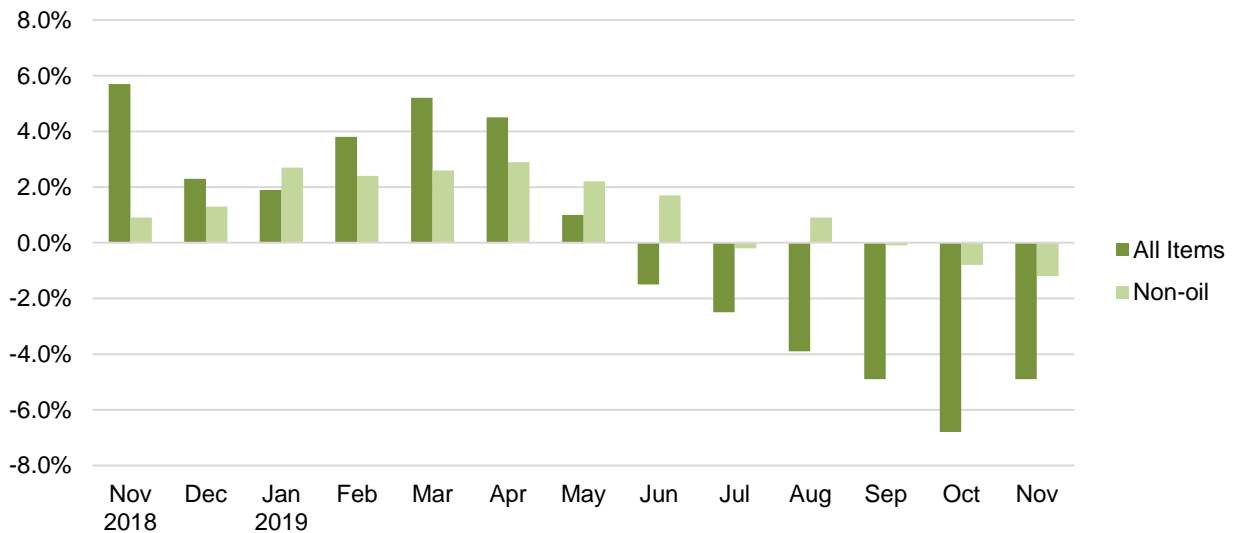
**Chart 1: Index**



**Chart 2: Month-on-Month Change**

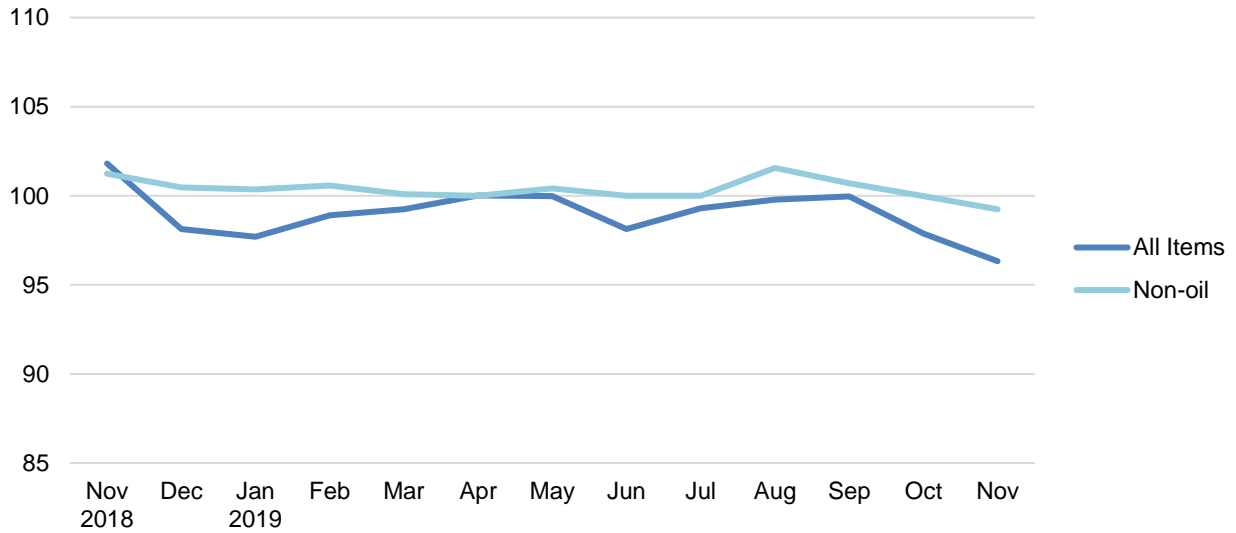


**Chart 3: Year-on-Year Change**

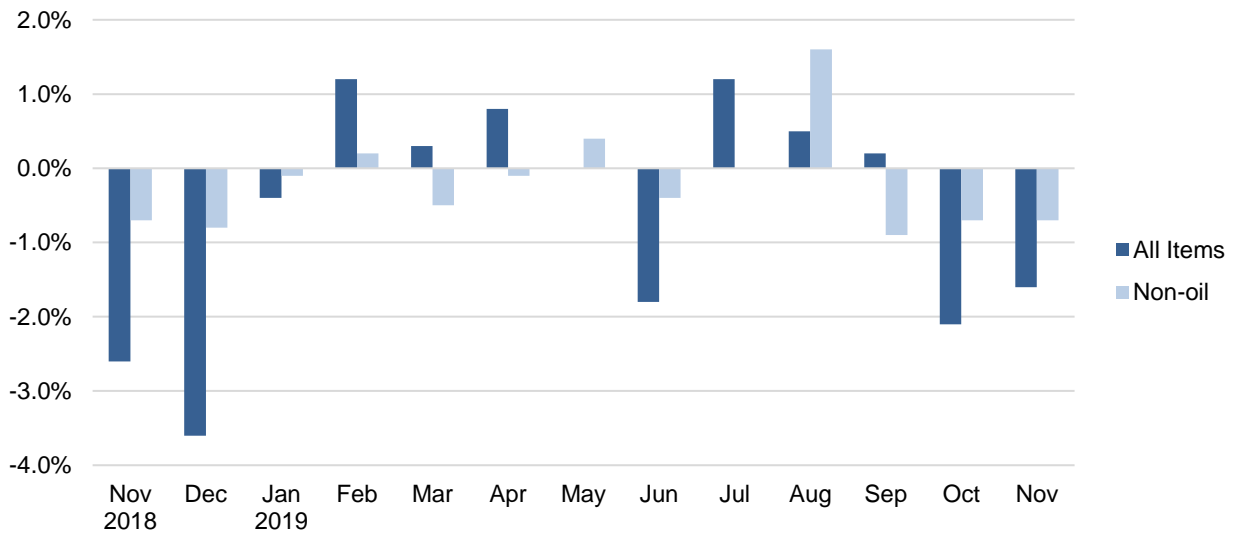


## Export Price Index (2018 = 100) November 2019

**Chart 4: Index**



**Chart 5: Month-on-Month Change**



**Chart 6: Year-on-Year Change**

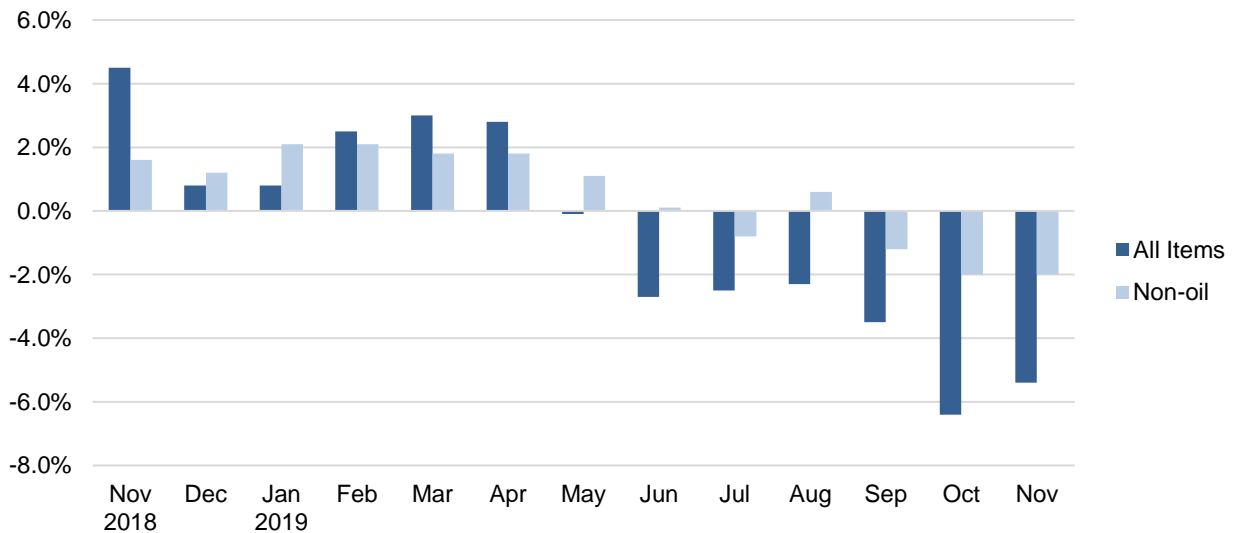




Table 1 Import Price Index

November 2019

Commodity section / division	Weights	Index (2018=100)			% Change		
					Oct 2019	Nov 2019	Nov 2019
		Sep 2019	Oct 2019	Nov 2019	Sep 2019	Oct 2019	Nov 2018
<b>All Items</b>	<b>10,000</b>	<b>99.1</b>	<b>98.4</b>	<b>97.6</b>	<b>-0.7</b>	<b>-0.8</b>	<b>-4.9</b>
<b>Non-oil Items</b>	<b>7,410</b>	<b>101.4</b>	<b>100.9</b>	<b>100.3</b>	<b>-0.4</b>	<b>-0.6</b>	<b>-1.2</b>
Food & Live Animals	247	102.6	102.5	101.7	-0.2	-0.7	0.9
Live animals	9	98.6	98.6	97.5	-0.1	-1.1	0.1
Meat & meat preparations	31	105.2	105.4	104.7	0.2	-0.6	7.3
Dairy products & birds' eggs	30	107.9	107.9	106.0	-	-1.8	3.2
Fish seafood & preparations	34	97.0	97.0	97.3	-	0.3	-3.1
Cereals & cereal preparations	24	101.3	101.5	101.3	0.3	-0.2	-0.5
Vegetables & fruit	48	106.6	104.2	102.8	-2.2	-1.4	0.9
Sugar, sugar preparations & honey	9	98.7	98.5	97.5	-0.1	-1.1	-3.9
Coffee, tea, cocoa, spices & manufactures	28	95.3	97.8	96.7	2.7	-1.2	-2.5
Animal feeding stuff (excl unmilled cereals)	4	97.3	96.9	96.2	-0.4	-0.8	-2.7
Miscellaneous food preparations	31	105.8	105.5	105.8	-0.3	0.3	2.7
Beverages & Tobacco	112	100.3	100.0	100.5	-0.3	0.5	-0.5
Beverages	84	99.5	99.1	99.9	-0.3	0.8	-0.4
Tobacco & manufactures	28	103.0	102.7	102.3	-0.3	-0.4	-0.6
Crude Materials (excl fuels)	84	101.2	100.8	100.7	-0.4	-0.1	-
Oil seeds & oleaginous fruits	2	104.2	103.2	109.3	-0.9	5.9	8.0
Crude rubber	19	109.8	109.1	108.3	-0.6	-0.7	6.2
Cork & wood	3	96.3	94.8	94.8	-1.6	-	-7.1
Crude fertilizers & minerals	30	102.0	102.0	101.9	-0.1	-0.1	1.0
Metalliferous ores & metal scrap	17	90.3	88.7	88.5	-1.7	-0.3	-7.7
Crude animal & vegetable materials nes	13	102.4	103.6	104.0	1.2	0.4	-0.7
Mineral Fuels, Lubricants & Related Materials	2,590	92.7	91.4	89.9	-1.5	-1.6	-15.0
Petroleum & products & related materials	2,431	92.8	91.2	89.9	-1.8	-1.3	-14.3
Gas	159	90.7	94.4	88.8	4.2	-5.9	-23.8
Animal & Vegetable Oils, Fats & Waxes	27	89.1	89.5	92.8	0.4	3.8	2.7
Fixed vegetable fats & oils	27	89.1	89.5	92.8	0.4	3.8	2.7
Chemicals & Chemical Products	888	98.8	98.2	97.3	-0.6	-0.9	-3.7
Organic chemicals	216	94.8	94.2	93.9	-0.6	-0.4	-6.5
Inorganic chemicals	35	103.8	101.3	95.8	-2.4	-5.4	3.2
Dyeing, tanning & colouring materials	33	108.9	107.0	105.5	-1.8	-1.4	3.4
Medicinal & pharmaceutical products	101	103.1	102.9	102.7	-0.2	-0.2	2.0
Essential oils & perfume; toilet cleaning products	147	99.6	99.4	99.2	-0.2	-0.2	-2.0
Plastics in primary forms	164	94.1	92.8	91.4	-1.4	-1.5	-9.4
Plastics in non-primary forms	38	103.0	102.3	101.9	-0.7	-0.4	0.6
Chemical materials & products nes	154	101.7	101.6	100.6	-	-1.0	-2.9
Manufactured Goods	505	100.5	100.0	99.4	-0.5	-0.6	-0.6
Rubber manufactures nes	25	101.6	102.6	99.2	1.0	-3.3	-
Paper manufactures	51	96.8	96.2	95.6	-0.6	-0.6	-6.4
Textile manufactures	26	103.2	102.1	101.7	-1.0	-0.5	0.2
Non-metal mineral manufactures nes	60	101.2	102.8	103.3	1.6	0.5	2.9
Iron & steel	131	99.4	98.9	98.6	-0.5	-0.3	-1.2
Non-ferrous metals	84	102.0	101.1	100.1	-0.9	-1.0	2.5
Manufactures of metals nes	128	101.1	99.6	99.0	-1.4	-0.6	-1.6
Machinery & Transport Equipment	4,690	101.5	101.1	100.6	-0.4	-0.5	-1.5
Power-generating machinery & equipment	526	105.6	104.9	105.5	-0.6	0.5	3.9
Machinery specialized for particular industries	306	102.3	101.7	100.9	-0.6	-0.7	-1.0
Metal working machinery	23	98.5	97.3	97.1	-1.3	-0.2	-3.1
General industrial machinery	281	102.0	101.7	100.9	-0.3	-0.8	-0.6
Office machines & data-processing machines	457	100.5	99.8	98.5	-0.8	-1.3	-4.4
Telecommunication apparatus	390	96.6	95.8	94.7	-0.8	-1.2	-4.1
Electrical machinery apparatus nes, electrical parts	2,542	101.5	101.3	100.7	-0.2	-0.5	-2.0
Road vehicles	164	101.3	101.0	101.0	-0.3	-	-0.7
Miscellaneous Manufactured Articles	857	103.9	103.4	102.4	-0.5	-0.9	2.1
Prefab building, sanitary plumbing, lighting nes	12	100.7	100.7	100.7	-	-	0.7
Furniture, bedding, mattresses, cushions & others	26	105.1	104.9	104.6	-0.2	-0.3	4.5
Travel goods, handbags & similar containers	54	104.8	104.7	104.3	-0.1	-0.3	3.6
Articles of apparel & clothing accessories	79	100.3	100.1	100.0	-0.1	-0.1	-0.9
Footwear	24	99.6	99.8	99.7	0.2	-0.1	-1.1
Professional scientific & controlling instruments	275	105.6	104.7	103.5	-0.8	-1.1	2.6
Photographic & optical goods nes; watches & clocks	106	100.9	100.6	100.5	-0.3	-0.1	0.3
Miscellaneous manufactured articles nes	283	104.5	104.0	102.5	-0.5	-1.4	2.9

Figures may not sum to total due to rounding.

Table 2 Export Price Index

November 2019

Commodity section / division	Weights	Index (2018=100)			% Change		
					Oct 2019	Nov 2019	Nov 2019
		Sep 2019	Oct 2019	Nov 2019	Sep 2019	Oct 2019	Nov 2018
<b>All Items</b>	<b>10,000</b>	<b>100.0</b>	<b>97.9</b>	<b>96.3</b>	<b>-2.1</b>	<b>-1.6</b>	<b>-5.4</b>
<b>Non-oil Items</b>	<b>8,022</b>	<b>100.7</b>	<b>100.0</b>	<b>99.2</b>	<b>-0.7</b>	<b>-0.7</b>	<b>-2.0</b>
Food & Live Animals	236	97.9	97.2	97.0	-0.7	-0.2	-4.3
Dairy products & birds' eggs	5	101.8	101.2	100.5	-0.6	-0.8	-1.1
Fish seafood & preparations	9	95.2	94.6	94.4	-0.6	-0.2	-6.7
Cereals & cereal preparations	7	100.0	99.2	97.3	-0.8	-1.9	-3.2
Vegetables & fruit	8	90.6	88.8	87.1	-2.0	-2.0	-8.6
Sugar, sugar preparations & honey	3	103.1	102.7	102.1	-0.4	-0.6	1.7
Coffee, tea, cocoa, spices & manufactures	26	104.6	104.0	103.1	-0.6	-0.8	2.1
Animal feeding stuff (excl unmilled cereals)	7	110.4	109.7	108.9	-0.7	-0.7	5.6
Miscellaneous food preparations	171	96.5	95.9	96.0	-0.6	0.1	-5.6
Beverages & Tobacco	103	103.2	103.3	102.4	0.1	-0.8	-0.1
Beverages	75	102.8	103.1	102.1	0.3	-1.0	0.2
Tobacco & manufactures	28	104.2	103.8	103.3	-0.4	-0.5	-0.8
Crude Materials (excl fuels)	91	87.4	85.4	82.7	-2.2	-3.1	-20.1
Crude rubber	35	93.0	91.2	90.2	-1.9	-1.1	-14.2
Pulp and waste paper	26	81.3	78.8	71.8	-3.0	-8.9	-34.0
Metalliferous ores & metal scrap	26	84.6	82.4	81.4	-2.6	-1.3	-16.7
Crude animal & vegetable materials nes	4	95.4	96.6	96.9	1.3	0.3	4.4
Mineral Fuels, Lubricants & Related Materials	1,978	97.0	89.4	84.5	-7.8	-5.5	-18.8
Petroleum & products & related materials	1,978	97.0	89.4	84.5	-7.8	-5.5	-18.8
Animal & Vegetable Oils, Fats & Waxes	5	97.6	94.3	94.9	-3.4	0.6	-4.7
Fixed vegetable fats & oils	5	97.6	94.3	94.9	-3.4	0.6	-4.7
Chemicals & Chemical Products	1,525	94.1	93.3	92.5	-0.9	-0.8	-8.9
Organic chemicals	428	90.7	88.9	88.3	-2.0	-0.6	-13.5
Inorganic chemicals	14	103.9	103.9	102.8	-	-1.1	2.2
Dyeing, tanning & colouring materials	37	102.3	101.3	100.3	-1.0	-1.0	-2.5
Medicinal & pharmaceutical products	250	96.4	95.8	95.5	-0.7	-0.3	-4.5
Essential oils & perfume; toilet cleaning products	232	100.6	100.8	100.1	0.2	-0.7	0.3
Plastics in primary forms	355	88.5	88.1	86.5	-0.5	-1.7	-15.6
Plastics in non-primary forms	29	101.5	100.6	100.2	-0.9	-0.4	-
Chemical materials & products nes	181	97.7	97.2	96.6	-0.5	-0.7	-6.1
Manufactured Goods	318	99.6	98.6	97.9	-1.0	-0.7	-1.8
Rubber manufactures nes	22	100.0	99.6	99.2	-0.4	-0.5	-0.1
Paper manufactures	41	100.2	99.8	99.3	-0.4	-0.5	-0.5
Textile manufactures	19	101.5	100.7	100.0	-0.7	-0.8	-
Non-metal mineral manufactures nes	14	99.9	99.3	98.6	-0.6	-0.7	-2.8
Iron & steel	66	102.5	101.0	101.3	-1.5	0.3	-2.3
Non-ferrous metals	67	96.5	94.6	92.5	-1.9	-2.3	-2.8
Manufactures of metals nes	89	99.0	98.3	97.9	-0.6	-0.5	-2.0
Machinery & Transport Equipment	4,836	102.7	102.0	101.2	-0.6	-0.8	0.3
Power-generating machinery & equipment	418	101.2	100.8	100.2	-0.5	-0.6	-1.0
Machinery specialized for particular industries	437	110.3	100.8	100.4	-8.6	-0.4	3.7
Metal working machinery	25	103.8	102.1	101.5	-1.6	-0.6	2.9
General industrial machinery	212	102.4	102.3	102.0	-0.1	-0.3	2.2
Office machines & data-processing machines	467	103.2	103.8	103.2	0.6	-0.5	1.2
Telecommunication apparatus	366	95.9	94.6	93.2	-1.3	-1.5	-5.9
Electrical machinery apparatus nes, electrical parts	2,814	102.5	103.0	102.2	0.5	-0.8	0.5
Road vehicles	98	103.1	102.7	102.2	-0.4	-0.4	1.9
Miscellaneous Manufactured Articles	908	103.6	102.7	102.2	-0.9	-0.4	-0.4
Prefab building, sanitary plumbing, lighting nes	3	99.2	99.2	99.0	-	-0.2	-0.7
Furniture, bedding, mattresses, cushions & others	5	101.7	101.4	101.0	-0.3	-0.4	-1.4
Travel goods, handbags & similar containers	37	97.4	97.7	101.0	0.3	3.3	-0.6
Articles of apparel & clothing accessories	40	108.9	111.2	111.9	2.1	0.7	7.8
Footwear	14	100.0	99.4	98.7	-0.6	-0.7	-0.4
Professional scientific & controlling instruments	365	99.9	98.3	96.6	-1.6	-1.8	-6.8
Photographic & optical goods nes; watches & clocks	98	101.8	101.2	101.2	-0.6	-	1.8
Miscellaneous manufactured articles nes	345	108.2	107.4	107.7	-0.7	0.3	4.9

Figures may not sum to total due to rounding.

**Table 3 Import Price Index**

Section	All Items	Non-oil Items	Food & Live Animals	Beverages & Tobacco	Crude Materials	Mineral Fuels	Animal & Vegetable Oils, Fats & Waxes	Chemicals & Chemical Products	Manu- factured Goods	Machinery & Transport Equipment	Misc. Manu- factured Articles
Weights	<b>10,000</b>	<b>7,410</b>	247	112	84	2,590	27	888	505	4,690	857
<b>Index (2018=100)</b>											
2015	<b>95.1</b>	<b>102.4</b>	102.0	99.8	105.3	74.8	102.0	98.0	99.2	103.9	101.0
2016	<b>90.1</b>	<b>100.4</b>	99.5	99.6	97.8	61.5	110.6	93.8	92.3	102.4	101.8
2017	<b>95.3</b>	<b>101.0</b>	101.2	100.2	100.5	79.7	114.7	96.7	96.4	102.2	101.6
2018	<b>100.0</b>	<b>100.0</b>	100.0	100.0	100.0	100.0	100.0	100.0	100.0	100.0	100.0
2018											
Nov	<b>102.6</b>	<b>101.5</b>	100.8	101.0	100.7	105.7	90.4	101.0	100.0	102.1	100.3
Dec	<b>99.1</b>	<b>101.6</b>	101.0	100.9	100.4	91.9	90.3	100.2	100.1	102.3	100.3
2019											
Jan	<b>97.7</b>	<b>101.0</b>	101.2	100.7	99.7	88.3	91.3	99.1	99.4	101.6	100.9
Feb	<b>98.8</b>	<b>100.5</b>	100.2	100.6	100.1	93.8	90.7	98.7	100.4	100.9	100.7
Mar	<b>100.0</b>	<b>100.7</b>	100.2	100.7	100.2	97.9	89.6	99.2	100.6	101.2	100.6
Apr	<b>100.8</b>	<b>101.1</b>	100.2	100.6	101.6	99.9	90.3	99.6	100.0	101.7	100.7
May	<b>101.0</b>	<b>101.6</b>	101.0	101.0	102.9	99.3	89.1	99.5	100.4	102.3	101.5
Jun	<b>99.2</b>	<b>101.4</b>	101.8	100.9	102.0	92.8	87.6	99.1	99.6	102.0	102.0
Jul	<b>99.6</b>	<b>100.6</b>	102.3	100.0	101.5	96.9	86.2	98.4	99.2	100.9	102.2
Aug	<b>99.0</b>	<b>101.9</b>	102.6	100.7	102.4	90.6	88.6	98.9	100.0	102.3	104.1
Sep	<b>99.1</b>	<b>101.4</b>	102.6	100.3	101.2	92.7	89.1	98.8	100.5	101.5	103.9
Oct	<b>98.4</b>	<b>100.9</b>	102.5	100.0	100.8	91.4	89.5	98.2	100.0	101.1	103.4
Nov	<b>97.6</b>	<b>100.3</b>	101.7	100.5	100.7	89.9	92.8	97.3	99.4	100.6	102.4
<b>Percentage Change over same period of previous year (%)</b>											
2016	<b>-5.3</b>	<b>-2.0</b>	-2.5	-0.3	-7.1	-17.8	8.5	-4.3	-7.0	-1.4	0.8
2017	<b>5.8</b>	<b>0.6</b>	1.7	0.7	2.7	29.5	3.7	3.1	4.5	-0.3	-0.1
2018	<b>4.9</b>	<b>-1.0</b>	-1.2	-0.2	-0.5	25.5	-12.8	3.4	3.7	-2.1	-1.6
2018											
Nov	<b>5.7</b>	<b>0.9</b>	-0.4	1.2	0.7	21.1	-18.0	4.3	2.3	0.6	-0.6
Dec	<b>2.3</b>	<b>1.3</b>	-0.3	1.3	0.8	5.0	-14.6	2.6	2.5	1.3	0.3
2019											
Jan	<b>1.9</b>	<b>2.7</b>	1.2	2.6	1.4	-0.6	-15.4	1.0	0.5	3.7	1.9
Feb	<b>3.8</b>	<b>2.4</b>	0.3	2.5	1.6	8.2	-15.8	0.2	1.4	3.4	1.5
Mar	<b>5.2</b>	<b>2.6</b>	1.5	2.6	1.4	13.4	-15.7	0.4	1.6	3.6	1.2
Apr	<b>4.5</b>	<b>2.9</b>	2.3	1.2	3.7	9.2	-13.5	0.9	0.9	3.9	1.5
May	<b>1.0</b>	<b>2.2</b>	1.9	0.7	3.2	-2.3	-14.0	-0.3	0.1	3.2	1.5
Jun	<b>-1.5</b>	<b>1.7</b>	2.6	0.5	1.5	-10.2	-13.4	-0.9	-1.2	2.5	1.8
Jul	<b>-2.5</b>	<b>-0.2</b>	2.2	-0.8	-	-8.8	-13.7	-2.4	-1.7	-	1.7
Aug	<b>-3.9</b>	<b>0.9</b>	1.7	-0.2	0.8	-16.7	-9.5	-2.1	-0.8	1.2	3.6
Sep	<b>-4.9</b>	<b>-0.1</b>	1.5	-0.6	-	-17.5	-7.3	-2.5	0.1	-0.2	3.2
Oct	<b>-6.8</b>	<b>-0.8</b>	1.3	-0.9	-	-21.7	-5.1	-3.5	-0.6	-1.0	2.6
Nov	<b>-4.9</b>	<b>-1.2</b>	0.9	-0.5	-	-15.0	2.7	-3.7	-0.6	-1.5	2.1

**Table 4 Export Price Index**

Section	All Items	Non-oil Items	Food & Live Animals	Beverages & Tobacco	Crude Materials	Mineral Fuels	Animal & Vegetable Oils, Fats & Waxes	Chemicals & Chemical Products	Manu-factured Goods	Machinery & Transport Equipment	Misc. Manu-factured Articles
Weights	<b>10,000</b>	<b>8,022</b>	236	103	91	1,978	5	1,525	318	4,836	908
<b>Index (2018=100)</b>											
2015	<b>99.5</b>	<b>104.6</b>	105.1	101.4	94.4	79.9	97.8	102.2	99.1	107.4	97.3
2016	<b>94.2</b>	<b>101.8</b>	102.2	103.4	88.0	64.7	97.7	96.8	95.6	104.2	100.8
2017	<b>96.9</b>	<b>100.9</b>	100.0	101.7	101.1	81.4	102.8	97.7	98.2	102.0	101.5
2018	<b>100.0</b>	<b>100.0</b>	100.0	100.0	100.0	100.0	100.0	100.0	100.0	100.0	100.0
2018											
Nov	<b>101.8</b>	<b>101.2</b>	101.4	102.5	103.5	104.1	99.6	101.6	99.7	100.9	102.6
Dec	<b>98.1</b>	<b>100.5</b>	100.2	101.8	103.2	88.6	98.6	99.2	99.1	100.6	102.2
2019											
Jan	<b>97.7</b>	<b>100.4</b>	99.8	102.5	97.7	86.9	99.0	96.7	98.3	101.4	101.8
Feb	<b>98.9</b>	<b>100.6</b>	99.2	102.5	96.4	92.1	96.6	96.2	99.3	102.0	101.6
Mar	<b>99.2</b>	<b>100.1</b>	97.8	102.0	95.6	95.8	97.1	96.2	99.4	101.2	101.4
Apr	<b>100.0</b>	<b>100.0</b>	96.2	102.3	95.1	100.1	96.6	96.0	99.1	101.4	100.7
May	<b>100.0</b>	<b>100.4</b>	97.3	102.5	94.4	98.2	96.9	96.8	98.7	101.6	101.7
Jun	<b>98.1</b>	<b>100.0</b>	97.7	102.3	91.5	90.6	95.0	94.9	98.0	101.7	101.3
Jul	<b>99.3</b>	<b>100.0</b>	98.1	102.2	90.3	96.5	98.8	94.3	98.2	101.9	101.2
Aug	<b>99.8</b>	<b>101.6</b>	97.8	102.6	89.1	92.5	100.4	94.7	99.3	103.9	103.6
Sep	<b>100.0</b>	<b>100.7</b>	97.9	103.2	87.4	97.0	97.6	94.1	99.6	102.7	103.6
Oct	<b>97.9</b>	<b>100.0</b>	97.2	103.3	85.4	89.4	94.3	93.3	98.6	102.0	102.7
Nov	<b>96.3</b>	<b>99.2</b>	97.0	102.4	82.7	84.5	94.9	92.5	97.9	101.2	102.2
<b>Percentage Change over same period of previous year (%)</b>											
2016	<b>-5.4</b>	<b>-2.7</b>	-2.8	2.0	-6.7	-19.0	-	-5.2	-3.6	-3.0	3.6
2017	<b>2.9</b>	<b>-0.9</b>	-2.2	-1.7	14.9	25.7	5.2	0.9	2.7	-2.1	0.7
2018	<b>3.2</b>	<b>-0.9</b>	-	-1.7	-1.1	22.9	-2.7	2.3	1.9	-1.9	-1.5
2018											
Nov	<b>4.5</b>	<b>1.6</b>	1.3	2.6	4.6	16.9	-1.0	4.2	1.2	0.7	2.0
Dec	<b>0.8</b>	<b>1.2</b>	0.6	2.4	3.8	-1.5	-1.5	1.0	1.0	0.9	2.5
2019											
Jan	<b>0.8</b>	<b>2.1</b>	0.5	4.4	1.2	-4.8	-0.6	-0.6	-0.8	2.9	3.3
Feb	<b>2.5</b>	<b>2.1</b>	0.4	4.1	-0.1	3.8	-3.1	-1.7	-0.5	3.4	3.3
Mar	<b>3.0</b>	<b>1.8</b>	-0.2	4.6	-0.9	8.6	-2.9	-1.6	0.2	2.8	3.2
Apr	<b>2.8</b>	<b>1.8</b>	-2.4	4.0	-1.9	7.1	-3.5	-1.9	-0.8	3.1	3.0
May	<b>-0.1</b>	<b>1.1</b>	-0.4	2.9	-4.1	-4.7	-3.7	-2.7	-2.0	2.3	3.0
Jun	<b>-2.7</b>	<b>0.1</b>	-1.9	2.6	-8.3	-13.4	-5.5	-5.5	-3.3	1.9	2.2
Jul	<b>-2.5</b>	<b>-0.8</b>	-3.2	1.5	-10.0	-9.1	-1.9	-7.4	-2.5	1.4	0.4
Aug	<b>-2.3</b>	<b>0.6</b>	-4.3	2.6	-13.0	-13.3	0.3	-6.9	-0.5	3.0	3.4
Sep	<b>-3.5</b>	<b>-1.2</b>	-3.3	1.9	-14.4	-11.8	-2.6	-8.1	-0.1	0.4	2.9
Oct	<b>-6.4</b>	<b>-2.0</b>	-4.5	1.5	-17.6	-22.2	-5.8	-9.1	-2.2	0.3	-
Nov	<b>-5.4</b>	<b>-2.0</b>	-4.3	-0.1	-20.1	-18.8	-4.7	-8.9	-1.8	0.3	-0.4

**NOTATIONS**

- nes not elsewhere specified
- nil or negligible

**NOTES**

The Import and Export Price Indices report contains statistics that are the most recent available at the time of its preparation.

Some statistics, particularly those for the most recent time periods, are provisional and may be subject to revision in later issues.