



Import & Export Price Indices November 2020

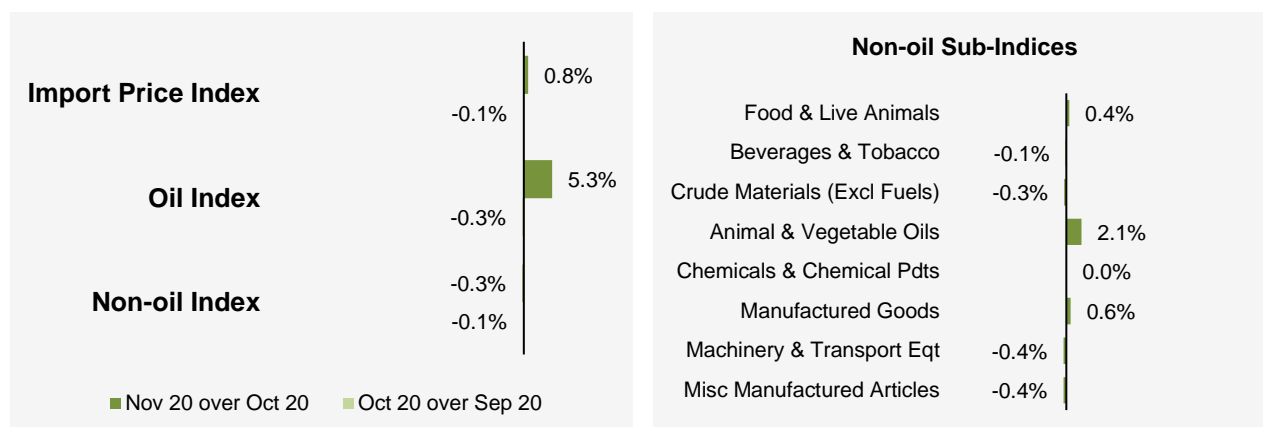
IMPORT AND EXPORT PRICE INDICES, November 2020
ISSN 2591-7463

© Department of Statistics, Ministry of Trade & Industry, Republic of Singapore

Reproducing or quoting any part of this publication is permitted, provided this publication is accredited as the source. Please refer to the SingStat Website Terms of Use (<http://www.singstat.gov.sg/terms-of-use>) for more details on the conditions of use of this publication.

Import Price Index (2018 = 100) November 2020

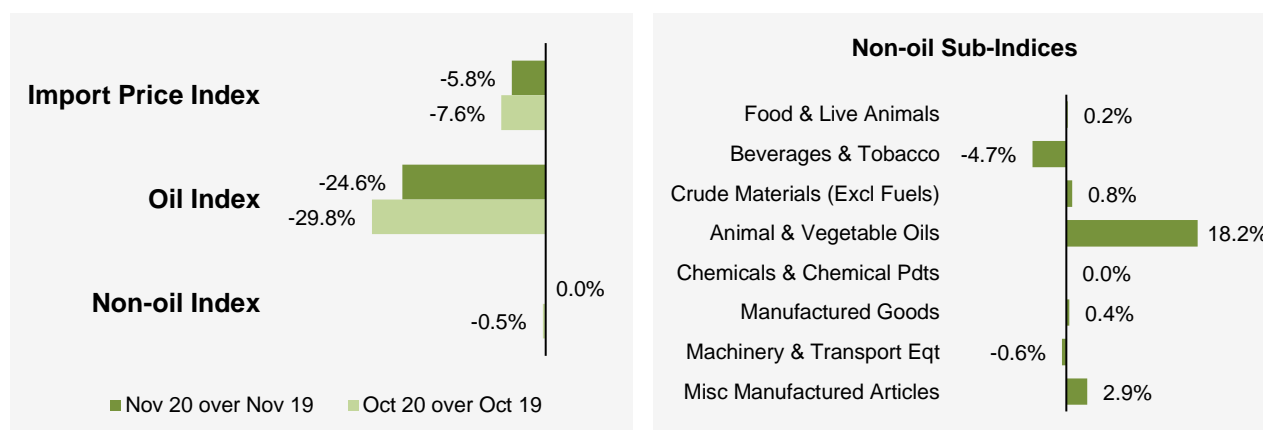
Month-on-Month Change



The Import Price Index rose 0.8% in November 2020, in contrast to the 0.1% decrease in October 2020. The Oil index increased 5.3%, after the 0.3% decrease in the previous month. The Non-oil index fell 0.3%, continuing the 0.1% decline in October 2020.

Among the Non-oil sub-indices, the declines led by the Machinery & Transport Equipment (-0.4%) and Miscellaneous Manufactured Articles (-0.4%) indices were partially moderated by the increases in the Manufactured Goods (0.6%) and Food & Live Animals (0.4%) indices.

Year-on-Year Change

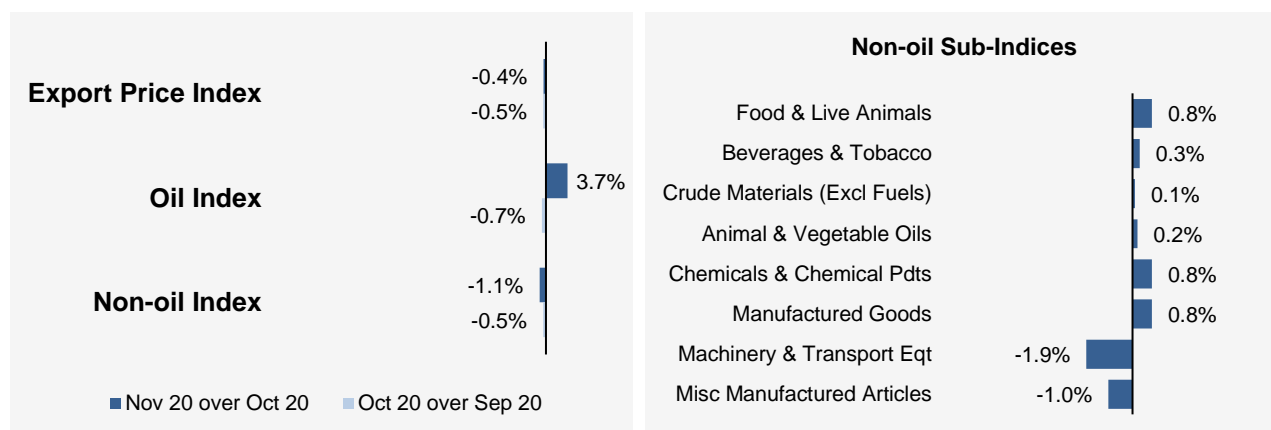


The Import Price Index fell 5.8% in November 2020 from a year ago, extending the 7.6% decline in October 2020. The Oil index declined 24.6% while the Non-oil index remained unchanged.

For the Non-oil sub-indices, higher prices of Animal & Vegetable Oils (18.2%), Miscellaneous Manufactured Articles (2.9%), Crude Materials (0.8%), Manufactured Goods (0.4%) and Food & Live Animals (0.2%) were partially offset by lower prices of Beverages & Tobacco (-4.7%) and Machinery & Transport Equipment (-0.6%).

Export Price Index (2018 = 100) November 2020

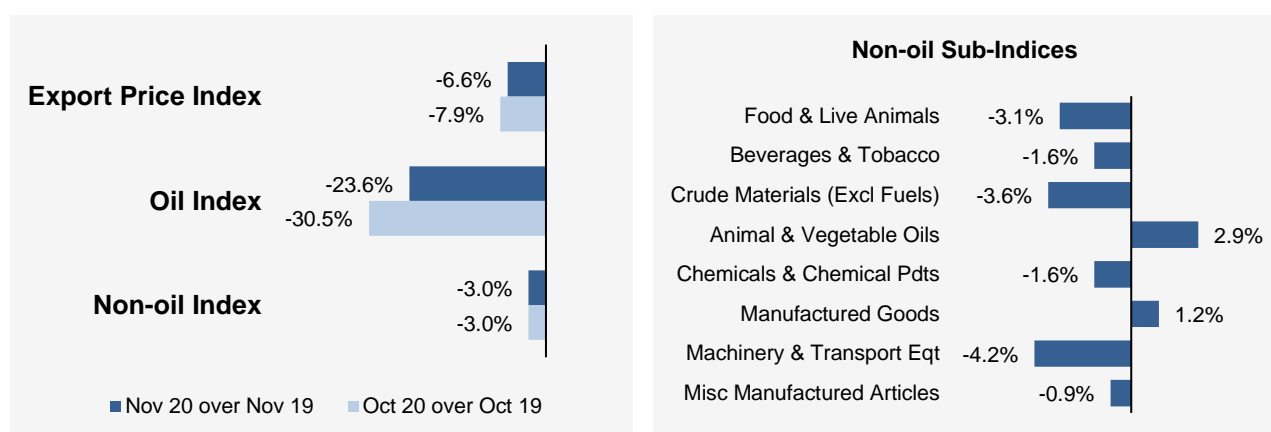
Month-on-Month Change



The Export Price Index decreased 0.4% in November 2020, following the 0.5% decline in October 2020. The Oil index rose 3.7%, in contrast to the 0.7% decrease in the previous month. The Non-oil index fell 1.1%, continuing the 0.5% decline in October 2020.

Among the Non-oil sub-indices, the declines were led by the Machinery & Transport Equipment (-1.9%) and Miscellaneous Manufactured Articles (-1.0%) indices due mainly to lower prices of semiconductor memory and semiconductor media respectively. The declines were partially moderated by increases in the Chemicals & Chemical Products (0.8%) and Manufactured Goods (0.8%) indices.

Year-on-Year Change



The Export Price Index fell 6.6% in November 2020 from a year ago, following the 7.9% decrease in October 2020. The Oil and Non-oil indices declined 23.6% and 3.0% respectively.

For the Non-oil sub-indices, lower prices of Machinery & Transport Equipment (-4.2%), Crude Materials (-3.6%), Food & Live Animals (-3.1%), Beverages & Tobacco (-1.6%), Chemicals & Chemical Products (-1.6%) and Miscellaneous Manufactured Articles (-0.9%) were partially offset by higher prices of Animal & Vegetable Oils (2.9%) and Manufactured Goods (1.2%).

Technical Note

The **Import Price Index (IPI)** is used primarily as an indicator to track the price trends of imported goods into Singapore. Prices of imports, valued at cif (cost, insurance and freight) are obtained monthly from major importers. The weighting pattern of the index is derived from import statistics for 2018.

The **Export Price Index (EPI)** measures changes in the price of all exports of merchandise from Singapore, including re-exports. In general, prices are obtained from major exporters of the selected commodities. Prices used in the index computation, are the prices of goods that physically leave Singapore's main ports of export; also termed as free on board prices. The weights of the index are derived from the distribution of export by commodity in 2018.

Index Formula

The 2018-based series is compiled using the Laspeyres formula where the price and weight reference periods are aligned to the year 2018. The geometric mean formula has been adopted in the computation of unweighted elementary aggregate price indices. The arithmetic mean formula is applied in compiling indices at higher levels of aggregation where weights of specific sub-indices are available.

Measurement of Changes in Price Indices

Change over previous month compares the index of the month with that of the preceding month. Such comparisons measure the change in the price index between two consecutive months. They serve as useful short-term indicators of the price movements.

Change over same period of previous year measures change in the index over a twelve-month period. Such comparisons compare the movement in the price index between similar months in two consecutive years.

Linking the Old 2012-Based Price Index Series to the New 2018-Based Price Index Series

The IPI and EPI have been rebased from base year 2012 to base year 2018. To facilitate comparison of the historical price indices across base years, the old 2012-based series are linked to the new 2018-based series by re-scaling them via a Linked Coefficient. The Linked Coefficient is the ratio of the annual 2018-based index in 2018 to the annual 2012-based index in 2018.

Example : Linking the old Iron & Steel Index series for IPI prior to 2018, to the 2018-based Iron & Steel Index (2018=100)

1) Calculate the linked coefficient

Year	Iron & Steel Index (2012=100)	Iron & Steel Index (2018=100)	Linked Coefficient
2018	93.4	100.0	$100.0 \div 93.4 = 1.071$

2) Re-scaling the old series to the 2018-based series using the Linked Coefficient

Year	Month	Iron & Steel Index (2012=100)	Iron & Steel Index (2018=100)
2016	Dec	84.0	$84.0 \times 1.071 = 90.0$
2017	Jan	85.6	$85.6 \times 1.071 = 91.7$

Linking Method for Maintaining the Old Index Reference Period

To continue the old 2012-based index series going forward in time, re-scale the new 2018-based index series to the old base year 2012 level, via a Linked Coefficient. The Linked Coefficient is the ratio of the annual 2012-based index in 2018 to the annual 2018-based index in 2018.

Example : Linking the new 2018-based Iron & Steel Index series for IPI to the 2012-based Iron & Steel Index (2012=100)

1) Calculate the linked coefficient

Year	Iron & Steel Index (2018=100)	Iron & Steel Index (2012=100)	Linked Coefficient
2018	100.0	93.4	$93.4 \div 100.0 = 0.934$

2) Re-scaling the new series to the 2012-based series using the Linked Coefficient

Year	Month	Iron & Steel Index (2018=100)	Iron & Steel Index (2012=100)
2019	Jan	98.6	$98.6 \times 0.934 = 92.1$
2019	Feb	102.4	$102.4 \times 0.934 = 95.6$

Index Revision

The indices may be revised when late returns and amendments received from respondents are incorporated.

Dissemination of Data

The Import and Export Price Indices are available on the SingStat Website (www.singstat.gov.sg/tablebuilder). Excel tables for this month's report are available at <https://www.singstat.gov.sg/publications/economy/import-export-price-indices> or through the QR code below:



Import Price Index (2018 = 100) November 2020

Chart 1: Index

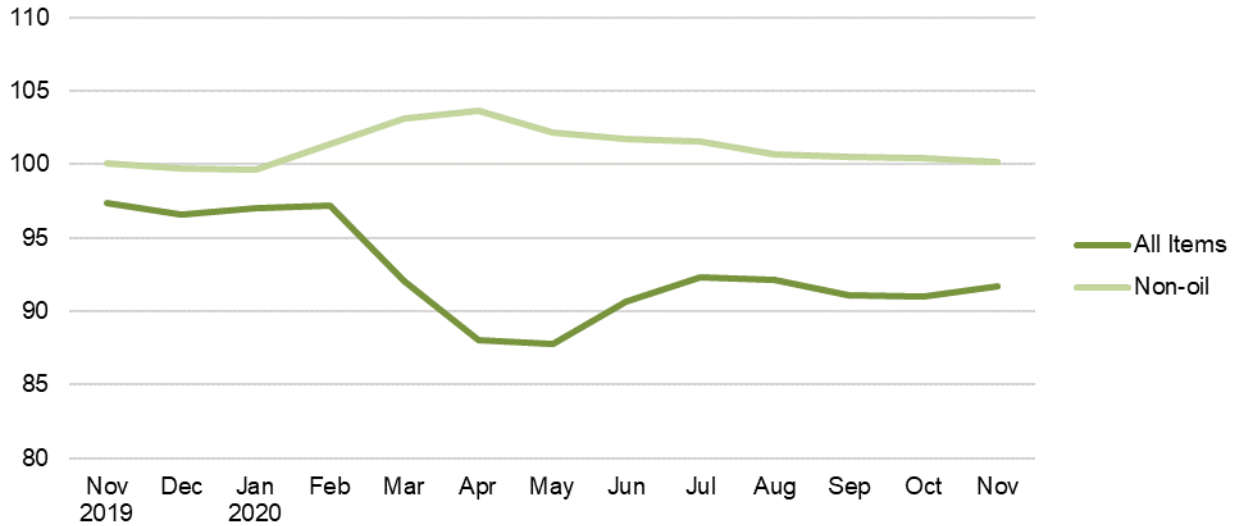


Chart 2: Month-on-Month Change

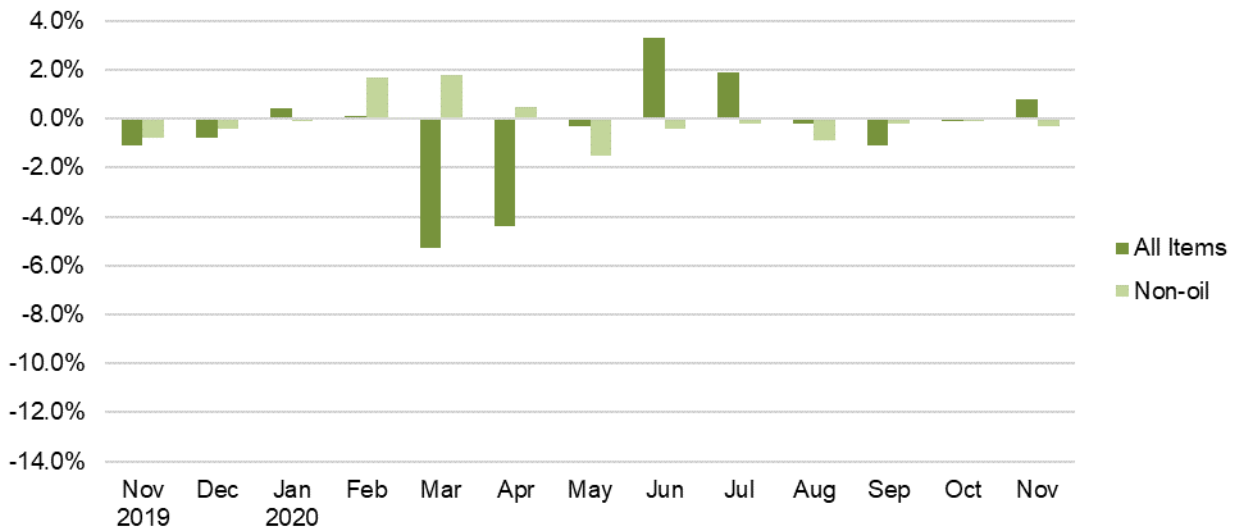
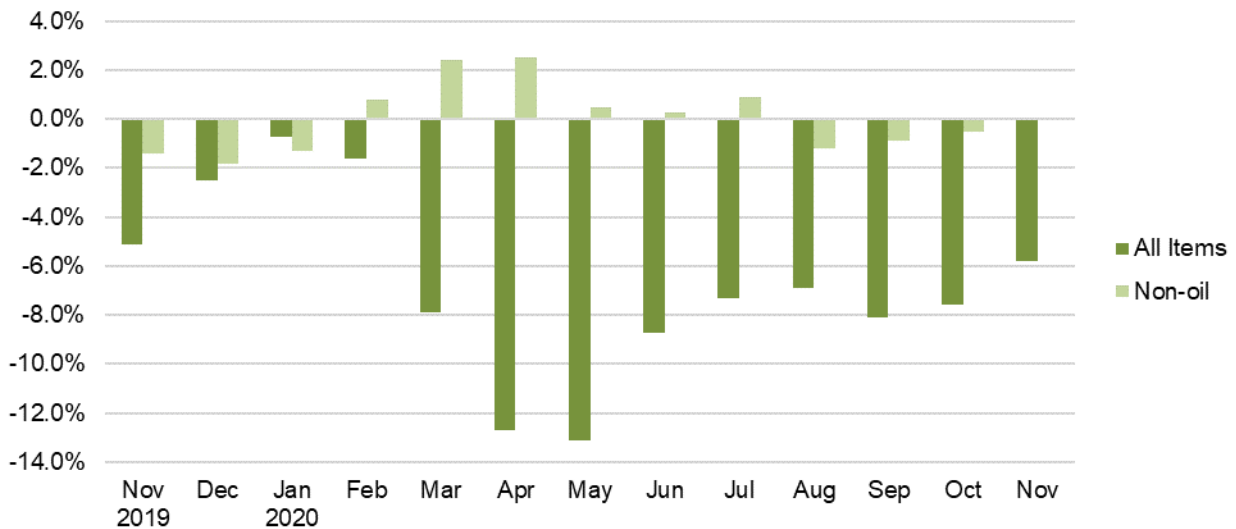


Chart 3: Year-on-Year Change



Export Price Index (2018 = 100) November 2020

Chart 4: Index

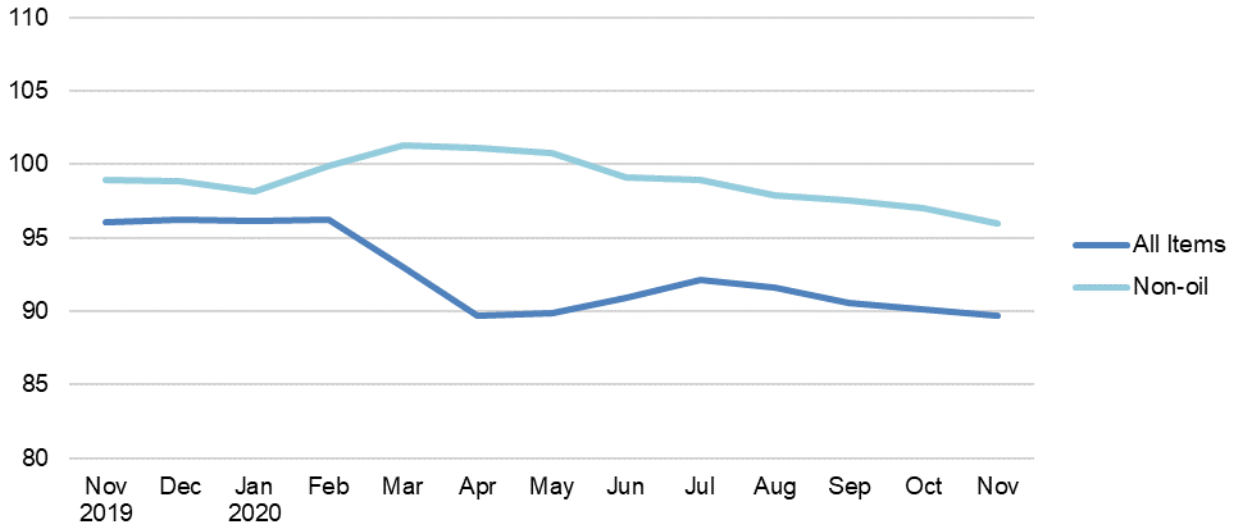


Chart 5: Month-on-Month Change

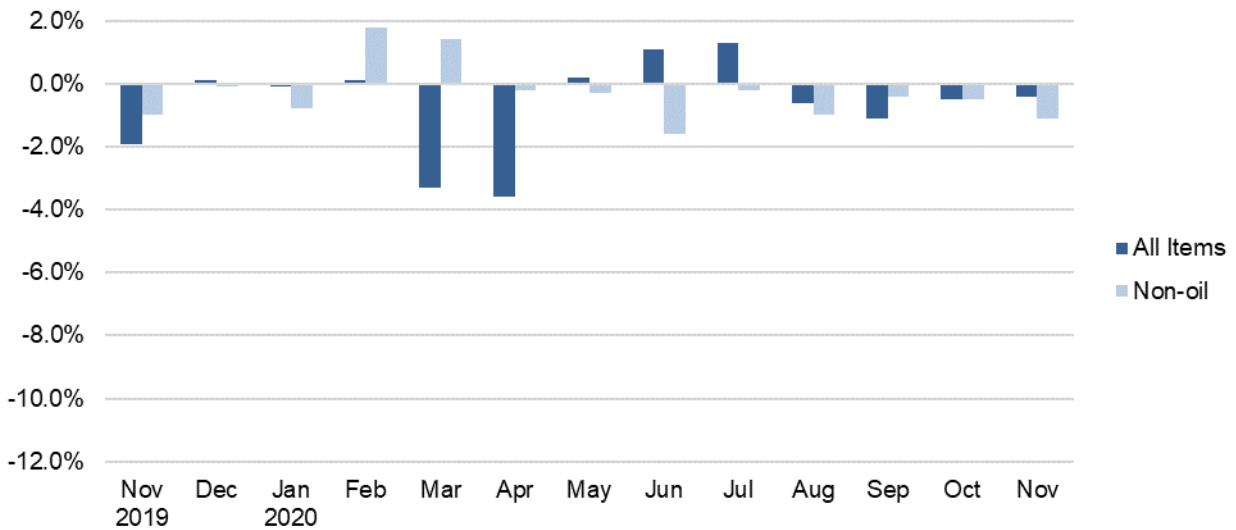


Chart 6: Year-on-Year Change

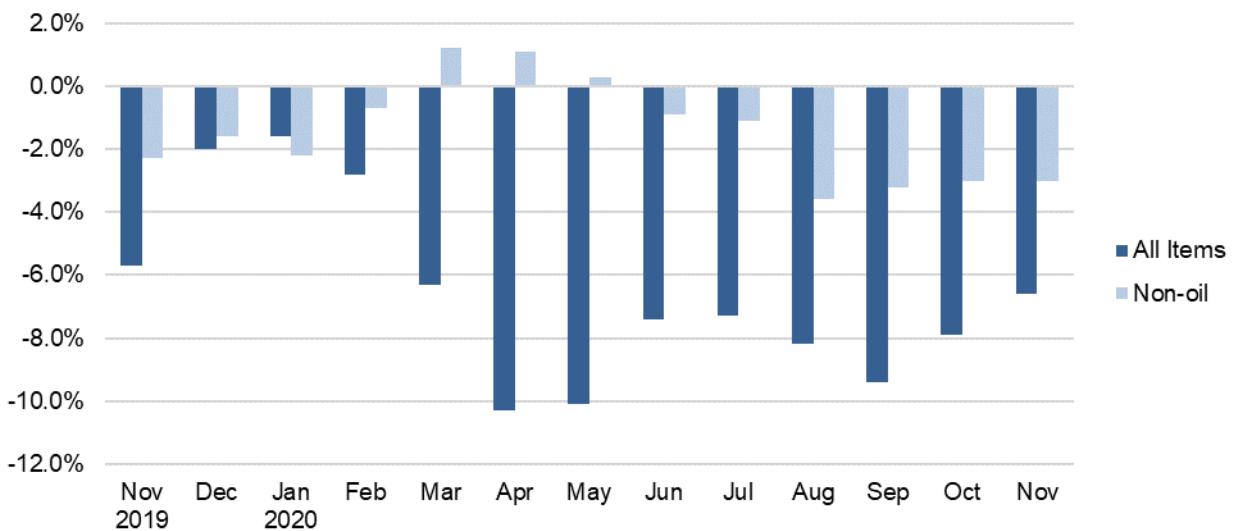


Table 1 Import Price Index

November 2020

Commodity section / division	Weights	Index (2018=100)			% Change		
					Oct 2020	Nov 2020	Nov 2020
		Sep 2020	Oct 2020	Nov 2020	Sep 2020	Oct 2020	Nov 2019
All Items	10,000	91.1	91.0	91.7	-0.1	0.8	-5.8
Non-oil Items	7,410	100.5	100.4	100.1	-0.1	-0.3	-
Food & Live Animals	247	102.3	101.4	101.8	-0.8	0.4	0.2
Live animals	9	100.3	100.0	100.5	-0.3	0.5	3.1
Meat & meat preparations	31	106.3	105.1	106.4	-1.2	1.3	1.3
Dairy products & birds' eggs	30	105.5	105.7	105.6	0.2	-0.1	-0.1
Fish seafood & preparations	34	93.9	93.1	93.3	-0.8	0.2	-4.1
Cereals & cereal preparations	24	100.4	100.1	99.2	-0.3	-0.9	-2.0
Vegetables & fruit	48	107.0	107.4	106.1	0.4	-1.3	3.7
Sugar, sugar preparations & honey	9	101.4	101.5	100.9	0.1	-0.5	3.6
Coffee, tea, cocoa, spices & manufactures	28	96.0	90.8	95.9	-5.4	5.6	-0.8
Animal feeding stuff (excl unmilled cereals)	4	100.3	99.7	99.3	-0.6	-0.4	3.3
Miscellaneous food preparations	31	105.1	104.8	104.8	-0.3	-0.1	-1.0
Beverages & Tobacco	112	94.7	95.1	95.0	0.4	-0.1	-4.7
Beverages	84	94.4	93.8	93.7	-0.6	-0.1	-5.2
Tobacco & manufactures	28	95.6	99.0	98.9	3.6	-0.1	-3.4
Crude Materials (excl fuels)	84	101.2	101.8	101.5	0.6	-0.3	0.8
Oil seeds & oleaginous fruits	2	113.2	113.0	112.6	-0.1	-0.4	3.0
Crude rubber	19	108.4	108.0	107.0	-0.4	-0.9	-1.2
Cork & wood	3	93.1	93.1	93.1	-	-	-1.8
Crude fertilizers & minerals	30	101.4	101.4	101.3	-0.1	-0.1	-0.6
Metalliferous ores & metal scrap	17	98.0	101.3	101.1	3.4	-0.2	14.3
Crude animal & vegetable materials nes	13	95.1	95.3	95.3	0.2	-	-8.3
Mineral Fuels, Lubricants & Related Materials	2,590	64.3	64.1	67.5	-0.3	5.3	-24.6
Petroleum & products & related materials	2,431	64.7	64.7	68.1	-	5.4	-24.2
Gas	159	58.9	56.3	58.2	-4.3	3.4	-30.1
Animal & Vegetable Oils, Fats & Waxes	27	104.1	108.4	110.7	4.2	2.1	18.2
Fixed vegetable fats & oils	27	104.1	108.4	110.7	4.2	2.1	18.2
Chemicals & Chemical Products	888	97.3	97.3	97.3	-	-	-
Organic chemicals	216	89.3	89.5	89.7	0.1	0.2	-4.3
Inorganic chemicals	35	107.1	106.3	105.7	-0.7	-0.6	10.4
Dyeing, tanning & colouring materials	33	105.6	104.3	103.8	-1.2	-0.5	-1.5
Medicinal & pharmaceutical products	101	103.6	103.7	103.3	-	-0.3	0.6
Essential oils & perfume; toilet cleaning products	147	106.5	106.5	106.4	-0.1	-0.1	7.3
Plastics in primary forms	164	87.0	87.8	89.3	0.9	1.6	-2.5
Plastics in non-primary forms	38	102.9	103.6	102.9	0.8	-0.7	0.9
Chemical materials & products nes	154	100.8	100.2	99.3	-0.6	-0.8	-1.3
Manufactured Goods	505	99.2	99.4	100.0	0.2	0.6	0.4
Rubber manufactures nes	25	100.3	101.6	102.1	1.3	0.6	3.0
Paper manufactures	51	89.9	89.5	89.1	-0.4	-0.5	-6.9
Textile manufactures	26	100.2	99.9	99.7	-0.4	-0.2	-2.0
Non-metal mineral manufactures nes	60	102.5	102.4	102.8	-0.1	0.5	-2.3
Iron & steel	131	95.8	95.6	96.5	-0.2	0.9	-2.1
Non-ferrous metals	84	105.9	108.4	110.6	2.3	2.1	10.6
Manufactures of metals nes	128	100.1	99.5	99.2	-0.6	-0.3	0.3
Machinery & Transport Equipment	4,690	100.2	100.1	99.7	-0.1	-0.4	-0.6
Power-generating machinery & equipment	526	111.1	110.7	113.2	-0.3	2.3	7.3
Machinery specialized for particular industries	306	101.2	100.7	99.8	-0.4	-0.9	-1.1
Metal working machinery	23	102.7	102.6	102.3	-0.1	-0.3	5.4
General industrial machinery	281	102.5	102.3	102.2	-0.1	-0.1	1.3
Office machines & data-processing machines	457	96.7	98.5	95.9	1.9	-2.6	-2.6
Telecommunication apparatus	390	87.0	86.7	86.5	-0.3	-0.2	-6.7
Electrical machinery apparatus nes, electrical parts	2,542	100.2	99.9	99.2	-0.3	-0.7	-1.2
Road vehicles	164	99.5	99.4	99.3	-0.1	-0.1	-1.6
Miscellaneous Manufactured Articles	857	106.3	105.8	105.4	-0.5	-0.4	2.9
Prefab building, sanitary plumbing, lighting nes	12	103.3	105.7	105.7	2.4	-	5.0
Furniture, bedding, mattresses, cushions & others	26	105.9	106.5	106.6	0.5	-	1.9
Travel goods, handbags & similar containers	54	103.0	102.9	102.8	-0.1	-0.1	-1.5
Articles of apparel & clothing accessories	79	101.4	101.4	101.8	-	0.4	2.0
Footwear	24	103.0	103.5	103.7	0.5	0.2	4.1
Professional scientific & controlling instruments	275	103.9	103.6	102.9	-0.3	-0.6	-0.6
Photographic & optical goods nes; watches & clocks	106	104.9	104.9	104.7	-	-0.2	4.2
Miscellaneous manufactured articles nes	283	111.7	110.2	109.5	-1.3	-0.7	6.8

Figures may not sum to total due to rounding.

Table 2 Export Price Index

November 2020

Commodity section / division	Weights	Index (2018=100)			% Change		
					Oct 2020	Nov 2020	Nov 2020
		Sep 2020	Oct 2020	Nov 2020	Sep 2020	Oct 2020	Nov 2019
All Items	10,000	90.6	90.1	89.7	-0.5	-0.4	-6.6
Non-oil Items	8,022	97.5	97.0	95.9	-0.5	-1.1	-3.0
Food & Live Animals	236	97.0	93.3	94.0	-3.8	0.8	-3.1
Dairy products & birds' eggs	5	101.0	73.5	57.8	-27.1	-21.5	-42.5
Fish seafood & preparations	9	87.4	85.9	84.0	-1.7	-2.2	-11.1
Cereals & cereal preparations	7	96.6	96.3	96.4	-0.3	0.1	-0.9
Vegetables & fruit	8	89.7	89.4	88.7	-0.4	-0.8	1.8
Sugar, sugar preparations & honey	3	101.6	103.0	104.4	1.3	1.4	4.7
Coffee, tea, cocoa, spices & manufactures	26	103.5	103.1	103.3	-0.4	0.3	0.2
Animal feeding stuff (excl unmilled cereals)	7	112.3	111.7	110.8	-0.5	-0.8	1.7
Miscellaneous food preparations	171	96.0	91.8	93.4	-4.3	1.7	-2.8
Beverages & Tobacco	103	101.2	100.5	100.8	-0.7	0.3	-1.6
Beverages	75	100.4	99.6	100.3	-0.8	0.8	-1.8
Tobacco & manufactures	28	103.2	102.8	101.9	-0.4	-0.9	-1.3
Crude Materials (excl fuels)	91	79.2	79.2	79.3	-	0.1	-3.6
Crude rubber	35	72.5	72.6	71.5	0.2	-1.6	-20.7
Pulp and waste paper	26	78.1	75.4	77.6	-3.5	2.9	10.4
Metalliferous ores & metal scrap	26	87.0	88.6	89.2	1.8	0.7	9.7
Crude animal & vegetable materials nes	4	94.8	101.4	95.5	7.0	-5.8	-1.5
Mineral Fuels, Lubricants & Related Materials	1,978	62.6	62.1	64.4	-0.7	3.7	-23.6
Petroleum & products & related materials	1,978	62.6	62.1	64.4	-0.7	3.7	-23.6
Animal & Vegetable Oils, Fats & Waxes	5	98.4	97.5	97.7	-0.9	0.2	2.9
Fixed vegetable fats & oils	5	98.4	97.5	97.7	-0.9	0.2	2.9
Chemicals & Chemical Products	1,525	89.6	90.6	91.3	1.1	0.8	-1.6
Organic chemicals	428	80.3	81.5	83.7	1.6	2.6	-6.0
Inorganic chemicals	14	110.7	110.8	112.4	0.2	1.4	9.4
Dyeing, tanning & colouring materials	37	95.8	94.9	93.8	-0.9	-1.2	-6.5
Medicinal & pharmaceutical products	250	97.7	97.6	97.5	-	-0.1	2.1
Essential oils & perfume; toilet cleaning products	232	98.2	99.1	98.9	0.9	-0.2	-1.1
Plastics in primary forms	355	82.2	84.5	85.4	2.8	1.1	-2.0
Plastics in non-primary forms	29	107.9	107.5	106.8	-0.4	-0.6	6.6
Chemical materials & products nes	181	98.3	98.3	97.9	-	-0.4	1.5
Manufactured Goods	318	98.3	98.3	99.1	-	0.8	1.2
Rubber manufactures nes	22	98.7	99.4	98.9	0.7	-0.5	-0.3
Paper manufactures	41	96.3	96.6	96.1	0.3	-0.5	-3.3
Textile manufactures	19	101.7	101.6	101.4	-0.1	-0.1	1.5
Non-metal mineral manufactures nes	14	99.4	99.1	98.4	-0.4	-0.6	-0.2
Iron & steel	66	95.4	94.9	95.7	-0.5	0.8	-5.4
Non-ferrous metals	67	99.2	99.7	103.3	0.5	3.6	11.7
Manufactures of metals nes	89	99.7	99.3	99.4	-0.4	0.1	1.5
Machinery & Transport Equipment	4,836	99.1	98.5	96.6	-0.5	-1.9	-4.2
Power-generating machinery & equipment	418	100.6	100.3	99.6	-0.3	-0.7	-0.4
Machinery specialized for particular industries	437	96.9	97.4	98.0	0.5	0.6	1.7
Metal working machinery	25	100.0	99.5	97.3	-0.5	-2.3	-4.2
General industrial machinery	212	101.9	101.9	101.7	-	-0.3	-0.3
Office machines & data-processing machines	467	100.4	100.1	100.5	-0.3	0.4	-1.7
Telecommunication apparatus	366	88.3	86.6	86.4	-2.0	-0.2	-7.3
Electrical machinery apparatus nes, electrical parts	2,814	99.9	99.3	96.0	-0.7	-3.3	-6.1
Road vehicles	98	105.3	105.0	104.2	-0.3	-0.8	1.9
Miscellaneous Manufactured Articles	908	103.7	101.7	100.7	-2.0	-1.0	-0.9
Prefab building, sanitary plumbing, lighting nes	3	107.0	107.1	106.8	0.1	-0.2	7.9
Furniture, bedding, mattresses, cushions & others	5	102.1	101.8	101.3	-0.3	-0.5	0.3
Travel goods, handbags & similar containers	37	96.4	94.6	94.6	-1.9	0.1	-6.3
Articles of apparel & clothing accessories	40	113.6	111.7	113.8	-1.7	1.9	1.6
Footwear	14	94.2	93.8	93.0	-0.4	-0.9	-5.8
Professional scientific & controlling instruments	365	92.1	91.3	90.4	-0.9	-1.0	-6.2
Photographic & optical goods nes; watches & clocks	98	102.8	102.9	102.8	0.2	-0.2	1.5
Miscellaneous manufactured articles nes	345	116.4	112.2	110.3	-3.6	-1.7	4.0

Figures may not sum to total due to rounding.

Table 3 Import Price Index

Section	All Items	Non-oil Items	Food & Live Animals	Beverages & Tobacco	Crude Materials	Mineral Fuels	Animal & Vegetable Oils, Fats & Waxes	Chemicals & Chemical Products	Manu-factured Goods	Machinery & Transport Equipment	Misc. Manu-factured Articles
Weights	10,000	7,410	247	112	84	2,590	27	888	505	4,690	857
Index (2018=100)											
2016	90.1	100.4	99.5	99.6	97.8	61.5	110.6	93.8	92.3	102.4	101.8
2017	95.3	101.0	101.2	100.2	100.5	79.7	114.7	96.7	96.4	102.2	101.6
2018	100.0	100.0	100.0	100.0	100.0	100.0	100.0	100.0	100.0	100.0	100.0
2019	99.0	100.9	101.5	100.4	101.2	93.4	90.4	98.6	99.9	101.3	102.0
2019											
Nov	97.4	100.1	101.6	99.7	100.7	89.5	93.7	97.3	99.6	100.2	102.4
Dec	96.6	99.7	102.2	99.5	101.1	87.8	98.9	96.4	99.5	99.7	102.2
2020											
Jan	97.0	99.6	103.0	101.3	101.7	89.5	102.9	96.2	98.1	99.7	102.3
Feb	97.2	101.4	103.1	102.3	102.7	85.1	101.6	98.1	99.9	101.4	104.3
Mar	92.0	103.2	103.2	104.0	103.6	60.3	99.0	98.9	100.5	103.6	106.8
Apr	88.0	103.7	104.5	104.1	102.0	43.1	96.7	97.6	100.4	104.4	108.0
May	87.7	102.1	104.4	97.0	101.8	46.5	94.2	96.6	100.2	102.4	107.8
Jun	90.6	101.7	102.9	97.0	101.4	58.8	96.6	96.6	99.6	102.1	106.7
Jul	92.3	101.5	103.3	93.9	101.9	66.0	98.1	98.1	99.7	101.6	106.7
Aug	92.2	100.6	102.8	93.8	100.5	67.9	101.9	97.8	99.2	100.3	106.5
Sep	91.1	100.5	102.3	94.7	101.2	64.3	104.1	97.3	99.2	100.2	106.3
Oct	91.0	100.4	101.4	95.1	101.8	64.1	108.4	97.3	99.4	100.1	105.8
Nov	91.7	100.1	101.8	95.0	101.5	67.5	110.7	97.3	100.0	99.7	105.4
Percentage Change over same period of previous year (%)											
2017	5.8	0.6	1.7	0.7	2.7	29.5	3.7	3.1	4.5	-0.3	-0.1
2018	4.9	-1.0	-1.2	-0.2	-0.5	25.5	-12.8	3.4	3.7	-2.1	-1.6
2019	-1.0	0.9	1.5	0.4	1.2	-6.6	-9.6	-1.4	-0.1	1.3	2.0
2019											
Nov	-5.1	-1.4	0.8	-1.3	-	-15.3	3.6	-3.7	-0.4	-1.9	2.1
Dec	-2.5	-1.8	1.2	-1.4	0.7	-4.5	9.6	-3.8	-0.6	-2.5	1.8
2020											
Jan	-0.7	-1.3	1.7	0.5	2.0	1.3	12.7	-2.9	-1.3	-1.9	1.4
Feb	-1.6	0.8	2.9	1.7	2.6	-9.2	12.0	-0.6	-0.5	0.5	3.5
Mar	-7.9	2.4	3.0	3.3	3.3	-38.4	10.4	-0.2	-0.1	2.4	6.2
Apr	-12.7	2.5	4.3	3.4	0.4	-56.8	7.2	-2.0	0.4	2.7	7.3
May	-13.1	0.5	3.4	-3.9	-1.1	-53.1	5.7	-2.9	-0.2	0.1	6.2
Jun	-8.7	0.3	1.1	-3.9	-0.6	-36.6	10.3	-2.6	-	0.1	4.7
Jul	-7.3	0.9	1.0	-6.0	0.5	-31.9	13.8	-0.3	0.5	0.7	4.4
Aug	-6.9	-1.2	0.2	-6.9	-1.9	-25.1	15.1	-1.1	-0.8	-1.9	2.3
Sep	-8.1	-0.9	-0.4	-5.7	-	-30.6	16.8	-1.6	-1.3	-1.3	2.4
Oct	-7.6	-0.5	-1.0	-5.0	1.0	-29.8	21.2	-0.9	-0.6	-1.0	2.4
Nov	-5.8	-	0.2	-4.7	0.8	-24.6	18.2	-	0.4	-0.6	2.9

Table 4 Export Price Index

Section	All Items	Non-oil Items	Food & Live Animals	Beverages & Tobacco	Crude Materials	Mineral Fuels	Animal & Vegetable Oils, Fats & Waxes	Chemicals & Chemical Products	Manufactured Goods	Machinery & Transport Equipment	Misc. Manufactured Articles
Weights	10,000	8,022	236	103	91	1,978	5	1,525	318	4,836	908
Index (2018=100)											
2016	94.2	101.8	102.2	103.4	88.0	64.7	97.7	96.8	95.6	104.2	100.8
2017	96.9	100.9	100.0	101.7	101.1	81.4	102.8	97.7	98.2	102.0	101.5
2018	100.0	100.0	100.0	100.0	100.0	100.0	100.0	100.0	100.0	100.0	100.0
2019	98.6	100.1	97.6	102.6	90.6	92.4	97.1	94.8	98.7	101.8	101.9
2019											
Nov	96.1	99.0	97.0	102.4	82.3	84.3	94.9	92.8	97.9	100.8	101.5
Dec	96.2	98.9	95.7	102.9	81.6	85.3	97.9	91.8	97.5	101.1	101.3
2020											
Jan	96.1	98.1	94.9	103.5	82.6	88.0	99.7	91.0	97.0	100.3	100.7
Feb	96.2	99.9	97.5	105.5	82.2	81.3	105.4	93.0	97.5	102.0	102.7
Mar	93.0	101.3	96.1	106.3	82.4	59.4	110.8	93.4	97.3	103.7	105.6
Apr	89.7	101.1	93.0	107.4	82.0	43.5	106.5	92.2	96.7	103.9	105.6
May	89.9	100.7	94.6	106.7	83.5	45.9	105.3	90.6	96.9	103.8	105.4
Jun	90.9	99.1	93.9	103.8	82.9	57.7	102.5	89.9	97.1	101.6	104.1
Jul	92.1	98.9	95.1	102.2	79.2	64.4	99.1	89.6	98.1	101.5	104.1
Aug	91.6	97.9	94.6	102.0	77.7	65.8	98.4	89.5	98.2	99.8	104.2
Sep	90.6	97.5	97.0	101.2	79.2	62.6	98.4	89.6	98.3	99.1	103.7
Oct	90.1	97.0	93.3	100.5	79.2	62.1	97.5	90.6	98.3	98.5	101.7
Nov	89.7	95.9	94.0	100.8	79.3	64.4	97.7	91.3	99.1	96.6	100.7
Percentage Change over same period of previous year (%)											
2017	2.9	-0.9	-2.2	-1.7	14.9	25.7	5.2	0.9	2.7	-2.1	0.7
2018	3.2	-0.9	-	-1.7	-1.1	22.9	-2.7	2.3	1.9	-1.9	-1.5
2019	-1.4	0.1	-2.4	2.6	-9.4	-7.6	-2.9	-5.2	-1.3	1.8	1.9
2019											
Nov	-5.7	-2.3	-4.3	-0.1	-20.5	-19.0	-4.7	-8.6	-1.8	-0.1	-1.1
Dec	-2.0	-1.6	-4.5	1.0	-20.9	-3.8	-0.7	-7.4	-1.5	0.6	-0.9
2020											
Jan	-1.6	-2.2	-4.9	1.0	-15.4	1.2	0.6	-5.9	-1.4	-1.1	-1.1
Feb	-2.8	-0.7	-1.7	2.9	-14.8	-11.8	9.1	-3.3	-1.8	-	1.0
Mar	-6.3	1.2	-1.8	4.2	-13.8	-38.0	14.0	-3.0	-2.1	2.5	4.1
Apr	-10.3	1.1	-3.3	5.0	-13.7	-56.6	10.2	-4.0	-2.5	2.5	4.9
May	-10.1	0.3	-2.8	4.1	-11.6	-53.3	8.7	-6.4	-1.9	2.1	3.7
Jun	-7.4	-0.9	-3.9	1.4	-9.4	-36.3	7.9	-5.3	-1.0	-0.1	2.8
Jul	-7.3	-1.1	-3.0	-	-12.4	-33.3	0.4	-5.0	-0.1	-0.4	2.8
Aug	-8.2	-3.6	-3.3	-0.6	-12.8	-28.9	-2.0	-5.5	-1.2	-3.9	0.6
Sep	-9.4	-3.2	-0.9	-1.9	-9.3	-35.5	0.8	-4.8	-1.3	-3.5	0.2
Oct	-7.9	-3.0	-4.1	-2.8	-7.3	-30.5	3.4	-2.9	-0.3	-3.4	-1.0
Nov	-6.6	-3.0	-3.1	-1.6	-3.6	-23.6	2.9	-1.6	1.2	-4.2	-0.9

NOTATIONS

- nes not elsewhere specified
- nil or negligible

NOTES

The Import and Export Price Indices report contains statistics that are the most recent available at the time of its preparation.

Some statistics, particularly those for the most recent time periods, are provisional and may be subject to revision in later issues.