



# IMPORT & EXPORT PRICE INDICES

October 2018

**IMPORT AND EXPORT PRICE INDICES, October 2018**  
**ISSN 2591-7463**

**© Department of Statistics, Ministry of Trade & Industry, Republic of Singapore**

Reproducing or quoting any part of this publication is permitted, provided this publication is accredited as the source. Please refer to the Statistics Singapore Website Terms of Use (<http://www.singstat.gov.sg/terms-of-use>) for more details on the conditions of use of this publication.

Statistical activities conducted by the Singapore Department of Statistics are governed by the provisions of the Statistics Act (Cap. 317). The Act guarantees the confidentiality of information collected from individuals and companies. It spells out the legislative authority and responsibility of the Chief Statistician. The Act is available in the Department's Website ([www.singstat.gov.sg](http://www.singstat.gov.sg)).

# IMPORT PRICE INDICES (2012 = 100)

**October 2018**

## Import Price Index

### *Change over previous month*

The Import Price Index rose 1.4 per cent in October 2018, extending the 1.0 per cent increase in September 2018. The Oil index climbed 4.5 per cent, following the 4.3 per cent rise in the previous month, attributed mainly to higher prices of diesel fuel & fuel oils and crude petroleum. The Non-oil index rose 0.2 per cent in October 2018, in contrast to the 0.3 per cent decrease in September 2018.

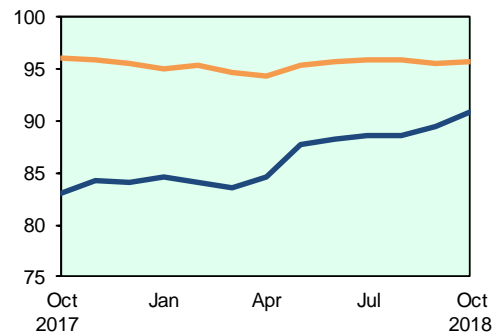
Among the Non-oil sub-indices, increases were led by the Miscellaneous Manufactured Articles (0.8 per cent) and Machinery & Transport Equipment (0.1 per cent) indices. Declines in the Animal & Vegetable Oils (-2.7 per cent) index, due mainly to lower prices of crude palm oil, and the Beverages & Tobacco (-0.1 per cent) index partially moderated the increases.

### *Change over same period of previous year*

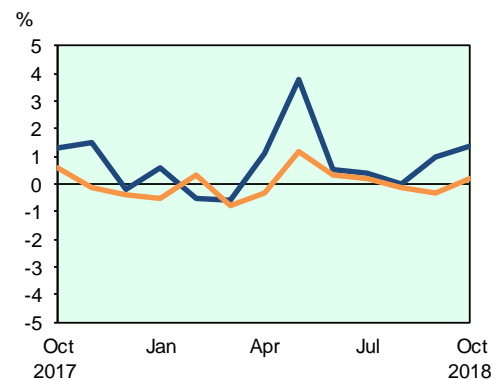
The Import Price Index rose 9.4 per cent in October 2018 from a year ago, following the 9.2 per cent increase in September 2018. The Oil index increased 42.6 per cent, while the Non-oil index fell 0.3 per cent.

For the Non-oil sub-indices, lower prices of Animal & Vegetable Oils (-15.9 per cent), Machinery & Transport Equipment (-1.5 per cent) and Miscellaneous Manufactured Articles (-0.6 per cent) were partially offset by higher prices of Chemicals & Chemical Products (4.8 per cent), Manufactured Goods (3.3 per cent), Beverages & Tobacco (0.8 per cent) and Food & Live Animals (0.6 per cent).

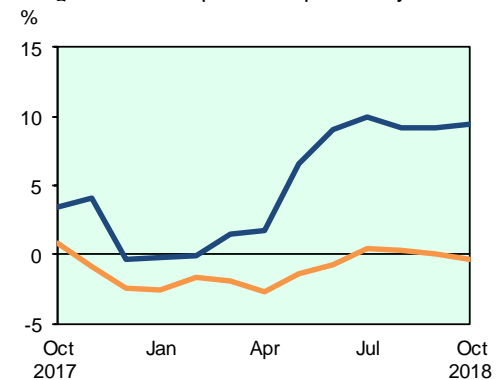
Import Price Index (2012=100) — Overall — Non-oil



Change over previous month



Change over same period of previous year



# EXPORT PRICE INDICES (2012 = 100)

**October 2018**

## Export Price Index

### *Change over previous month*

The Export Price Index rose 1.3 per cent in October 2018, following the 0.7 per cent increase in September 2018. The Oil index climbed 4.1 per cent, extending the 2.8 per cent gain in the previous month, due to higher prices of bunker fuel and diesel fuel & fuel oils. The Non-oil index rose 0.6 per cent in October 2018, after the 0.1 per cent increase in September 2018.

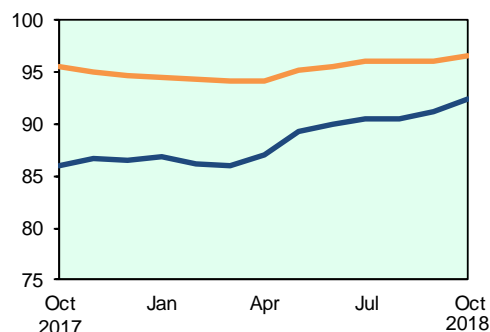
For the Non-oil sub-indices, increases led by the Manufactured Goods (0.9 per cent) and Machinery & Transport Equipment (0.8 per cent) indices were partially moderated by decreases in the Crude Materials (-0.2 per cent) and Beverages & Tobacco (-0.1 per cent) indices.

### *Change over same period of previous year*

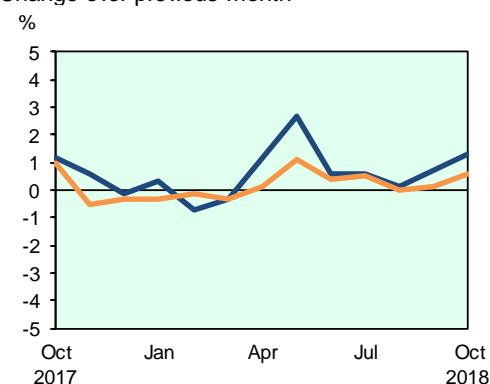
The Export Price Index rose 7.4 per cent in October 2018 over the previous year, after the 7.2 per cent increase in September 2018. The Oil and Non-oil indices rose 35.6 per cent and 1.2 per cent respectively.

Among the Non-oil sub-indices, increases in the Chemicals & Chemical Products (4.3 per cent), Food & Live Animals (2.3 per cent), Manufactured Goods (2.0 per cent), Machinery & Transport Equipment (0.6 per cent), Beverages & Tobacco (0.2 per cent) and Animal & Vegetable Oils (0.2 per cent) indices were partially offset by decreases in the Crude Materials (-1.5 per cent) and Miscellaneous Manufactured Articles (-0.5 per cent) indices.

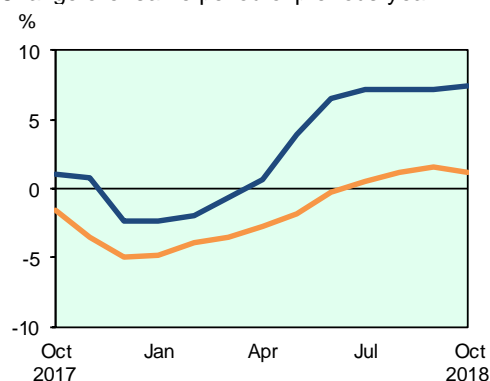
Export Price Index  
(2012=100) — Overall — Non-oil



Change over previous month



Change over same period of previous year



## TECHNICAL NOTE

The *Import Price Index (IPI)* is used primarily as an indicator to track the price trends of imported goods into Singapore. Prices of imports, valued at cif (cost, insurance and freight) are obtained monthly from major importers. The weighting pattern of the index is derived from import statistics for 2012.

The *Export Price Index (EPI)* measures changes in the price of all exports of merchandise from Singapore, including re-exports. In general, prices are obtained from major exporters of the selected commodities. Prices used in the index computation, are the prices of goods that physically leave Singapore's main ports of export; also termed as free on board prices. The weights of the index are derived from the distribution of export by commodity in 2012.

### Index Formula

The 2012-based series is compiled using the Laspeyres formula where the price and weight reference periods are aligned to the year 2012. The geometric mean (GM) formula has been adopted in the computation of unweighted elementary aggregate price indices. The arithmetic mean (AM) formula is applied in compiling indices at higher levels of aggregation where weights of specific sub-indices are available

An Information Paper on the Rebasing of Import and Export Price Indices (2012=100) is available on the department's website at <https://www.singstat.gov.sg/ppi#Producer-and-International-Trade-Prices>.

### Measurement of Changes in Price Indices

*Change over previous month* compares the index of the month with that of the preceding month. Such comparisons measure the change in the price index between two consecutive months. They serve as useful short-term indicators of the price movements. As the price indices are found not to be seasonal, it is not necessary for seasonal adjustment to be carried out.

*Change over same period of previous year* measures change in the index over a twelve-month period. Such comparisons compare the movement in the price index between similar months in two consecutive years.

### Index Revision

The indices may be revised when late returns and amendments received from respondents are incorporated.

### Dissemination of Data

The Import and Export Price Indices are available on the SingStat Website ([www.singstat.gov.sg/tablebuilder](http://www.singstat.gov.sg/tablebuilder)). Excel tables for this month's report are available at <https://www.singstat.gov.sg/publications/economy/import-export-price-indices> or through the QR code below:



**Table 1 Import Price Index**

**October 2018**

Commodity section / division	Weights	Index (2012=100)			% Change		
					Sep 2018	Oct 2018	Oct 2018
		Aug 2018	Sep 2018	Oct 2018	Aug 2018	Sep 2018	Oct 2017
<b>All Items</b>	<b>10,000</b>	<b>88.6</b>	<b>89.5</b>	<b>90.8</b>	<b>1.0</b>	<b>1.4</b>	<b>9.4</b>
<b>Non-oil Items</b>	<b>6,684</b>	<b>95.8</b>	<b>95.6</b>	<b>95.8</b>	<b>-0.3</b>	<b>0.2</b>	<b>-0.3</b>
Food & Live Animals	215	100.8	100.6	101.1	-0.2	0.5	0.6
Live animals	9	90.6	86.8	89.5	-4.1	3.1	-6.9
Meat & meat preparations	26	99.8	99.0	98.9	-0.7	-0.2	-4.0
Dairy products & birds' eggs	28	98.2	100.0	100.1	1.8	0.1	1.2
Fish seafood & preparations	28	111.6	111.7	112.6	0.1	0.8	2.1
Cereals & cereal preparations	21	103.6	103.3	104.2	-0.3	0.8	11.1
Vegetables & fruit	37	109.9	109.1	109.1	-0.7	-	1.7
Sugar, sugar preparations & honey	12	79.7	79.1	82.1	-0.8	3.8	-5.4
Coffee, tea, cocoa, spices & manufactures	28	91.2	90.6	90.1	-0.6	-0.6	-7.2
Animal feeding stuff (excl unmilled cereals)	3	109.9	110.7	110.3	0.7	-0.3	1.8
Miscellaneous food preparations	23	100.1	100.8	101.9	0.8	1.0	7.3
Beverages & Tobacco	86	105.7	105.7	105.6	-	-0.1	0.8
Beverages	66	102.7	102.8	102.5	0.1	-0.3	-1.0
Tobacco & manufactures	20	115.4	115.4	115.8	-0.1	0.3	6.5
Crude Materials (excl fuels)	83	83.0	83.2	83.8	0.2	0.8	-
Hides, skins & furskins raw	1	85.6	86.3	87.6	0.8	1.5	0.3
Oil seeds & oleaginous fruits	1	96.4	96.2	96.5	-0.2	0.3	1.3
Crude rubber	17	60.4	60.4	60.4	-	-	5.1
Cork & w ood	5	89.5	91.1	91.0	1.8	-0.1	1.7
Textile fibres & their w astes	3	88.8	88.8	88.8	-	-	-6.1
Crude fertilizers & minerals	26	79.7	79.9	81.0	0.2	1.5	1.8
Metalliferous ores & metal scrap	21	90.7	90.5	92.3	-0.2	1.9	-4.8
Crude animal & vegetable materials nes	9	108.3	108.6	107.1	0.3	-1.4	1.7
Mineral Fuels, Lubricants & Related Materials	3,316	74.1	77.3	80.8	4.3	4.5	42.6
Petroleum & products & related materials	3,152	73.3	76.7	80.1	4.6	4.5	43.5
Gas	164	88.4	89.0	94.0	0.7	5.6	28.6
Animal & Vegetable Oils, Fats & Waxes	37	67.6	66.7	64.9	-1.4	-2.7	-15.9
Fixed vegetable fats & oils	36	67.1	66.1	64.2	-1.4	-2.9	-16.5
Animal & vegetable oils, fats & w axes nes	1	83.7	83.7	83.8	0.1	0.2	-0.7
Chemicals & Chemical Products	694	94.8	95.2	95.6	0.4	0.4	4.8
Organic chemicals	188	89.7	90.8	90.4	1.2	-0.3	8.5
Inorganic chemicals	34	93.6	93.9	93.2	0.3	-0.7	2.0
Dyeing, tanning & colouring materials	28	90.0	90.4	90.7	0.4	0.4	3.6
Medicinal & pharmaceutical products	70	86.5	86.6	86.5	0.1	-0.2	6.0
Essential oils & perfume; toilet cleaning products	75	105.3	105.5	105.1	0.2	-0.4	1.9
Plastics in primary forms	147	97.3	97.4	97.1	0.1	-0.3	4.5
Plastics in non-primary forms	31	102.1	102.2	102.0	0.1	-0.2	1.7
Chemical materials & products nes	121	97.7	97.8	101.6	0.1	3.8	3.4
Manufactured Goods	635	96.4	96.2	96.1	-0.2	-	3.3
Rubber manufactures nes	32	93.6	93.8	94.1	0.2	0.3	0.1
Paper manufactures	50	109.8	110.1	110.0	0.3	-0.1	8.1
Textile manufactures	31	101.1	101.2	101.4	-	0.2	1.2
Non-metal mineral manufactures nes	83	95.4	95.3	95.4	-0.2	0.1	1.9
Iron & steel	179	96.1	96.9	95.7	0.8	-1.2	5.7
Non-ferrous metals	116	89.3	87.5	88.6	-2.0	1.2	-2.8
Manufactures of metals nes	144	97.8	97.4	97.7	-0.5	0.3	5.4
Machinery & Transport Equipment	4,205	95.3	94.9	95.0	-0.4	0.1	-1.5
Pow er-generating machinery & equipment	298	127.5	127.8	128.3	0.2	0.4	4.8
Machinery specialized for particular industries	352	94.9	95.0	95.0	0.1	-	3.1
Metal w orking machinery	31	95.8	95.7	97.3	-0.2	1.7	2.6
General industrial machinery	328	99.8	100.0	99.9	0.3	-0.1	0.1
Office machines & data-processing machines	495	100.1	100.3	100.6	0.1	0.3	0.7
Telecommunication apparatus	422	67.7	67.1	66.9	-1.0	-0.3	-4.8
Electrical machinery apparatus nes, electrical parts	2,116	93.9	93.2	93.2	-0.8	0.1	-4.0
Road vehicles	163	103.0	102.5	102.4	-0.5	-	1.0
Miscellaneous Manufactured Articles	729	99.5	99.4	100.1	-0.1	0.8	-0.6
Prefab building, sanitary plumbing, lighting nes	16	101.1	101.2	101.9	0.1	0.7	0.4
Furniture, bedding, mattresses, cushions & others	25	104.2	103.0	102.9	-1.2	-	1.9
Travel goods, handbags & similar containers	25	116.4	116.4	115.9	-	-0.5	0.6
Articles of apparel & clothing accessories	64	107.3	108.9	109.0	1.5	0.1	2.7
Footw ear	16	105.4	105.2	105.1	-0.2	-	0.6
Professional scientific & controlling instruments	207	111.9	111.1	112.5	-0.7	1.2	1.7
Photographic & optical goods nes; w atches & clocks	99	94.1	94.3	94.1	0.2	-0.2	-0.4
Miscellaneous manufactured articles nes	277	88.0	87.9	88.9	-0.1	1.2	-4.2

**Table 2 Export Price Index**

**October 2018**

Commodity section / division	Weights	Index (2012=100)			% Change		
					Sep 2018	Oct 2018	Oct 2018
		Aug 2018	Sep 2018	Oct 2018	Aug 2018	Sep 2018	Oct 2017
<b>All Items</b>	<b>10,000</b>	<b>90.5</b>	<b>91.2</b>	<b>92.4</b>	<b>0.7</b>	<b>1.3</b>	<b>7.4</b>
<b>Non-oil Items</b>	<b>7,395</b>	<b>96.0</b>	<b>96.1</b>	<b>96.6</b>	<b>0.1</b>	<b>0.6</b>	<b>1.2</b>
Food & Live Animals	124	99.2	99.5	100.2	0.3	0.8	2.3
Meat & meat preparations	2	102.2	102.2	102.2	-	-	-2.7
Dairy products & birds' eggs	7	75.3	75.8	75.0	0.6	-1.0	-5.0
Fish seafood & preparations	9	110.3	110.8	112.8	0.4	1.9	8.0
Cereals & cereal preparations	7	112.9	113.7	113.8	0.8	0.1	0.8
Vegetables & fruit	8	121.7	120.1	119.8	-1.3	-0.2	-20.8
Sugar, sugar preparations & honey	6	93.7	92.9	93.1	-0.8	0.2	-2.4
Coffee, tea, cocoa, spices & manufactures	29	94.6	94.0	96.5	-0.6	2.6	1.1
Animal feeding stuff (excl unmilled cereals)	6	103.3	103.1	103.5	-0.2	0.3	1.1
Miscellaneous food preparations	50	98.0	99.1	99.3	1.1	0.2	10.0
Beverages & Tobacco	87	106.7	106.2	106.1	-0.4	-0.1	0.2
Beverages	66	101.5	100.9	100.6	-0.6	-0.3	-1.0
Tobacco & manufactures	21	122.9	123.1	123.6	0.1	0.4	3.3
Crude Materials (excl fuels)	60	78.8	78.2	78.0	-0.8	-0.2	-1.5
Crude rubber	15	48.6	48.3	47.4	-0.6	-1.8	-10.6
Cork & w ood	2	103.6	103.7	102.4	-	-1.2	1.1
Pulp and w aste paper	6	112.4	116.2	118.5	3.4	2.0	6.1
Textile fibres & their w astes	3	81.2	81.2	81.2	-	-	6.4
Metalliferous ores & metal scrap	29	81.7	79.9	79.5	-2.2	-0.5	-2.2
Crude animal & vegetable materials nes	5	97.0	96.5	97.4	-0.5	0.9	1.2
Mineral Fuels, Lubricants & Related Materials	2,605	75.2	77.2	80.4	2.8	4.1	35.6
Petroleum & products & related materials	2,595	75.2	77.2	80.4	2.7	4.1	35.7
Gas	10	66.2	71.9	67.3	8.6	-6.4	9.7
Animal & Vegetable Oils, Fats & Waxes	8	87.6	87.4	87.2	-0.3	-0.2	0.2
Animal oils & fats	1	94.7	92.5	92.2	-2.3	-0.3	-3.9
Fixed vegetable fats & oils	5	76.1	75.9	75.6	-0.3	-0.4	-4.4
Animal & vegetable oils, fats & w axes nes	2	116.4	116.4	116.4	-	-	9.6
Chemicals & Chemical Products	1,344	96.7	97.0	97.1	0.2	0.1	4.3
Organic chemicals	498	90.3	91.1	91.3	0.9	0.3	6.2
Inorganic chemicals	13	93.0	92.6	93.6	-0.4	1.1	-0.3
Dyeing, tanning & colouring materials	32	98.5	98.7	96.9	0.3	-1.9	4.0
Medicinal & pharmaceutical products	228	92.0	92.2	92.6	0.3	0.4	0.1
Essential oils & perfume; toilet cleaning products	127	110.0	109.8	109.9	-0.2	0.1	-1.3
Plastics in primary forms	289	102.6	101.7	101.6	-0.9	-0.1	8.2
Plastics in non-primary forms	29	99.1	101.1	99.1	2.0	-1.9	2.3
Chemical materials & products nes	128	103.1	103.9	104.2	0.8	0.3	3.6
Manufactured Goods	381	97.6	97.2	98.1	-0.3	0.9	2.0
Rubber manufactures nes	26	102.0	102.2	102.4	0.2	0.2	1.5
Wood & cork manufactures (excl furniture)	2	121.8	122.0	122.4	0.1	0.3	10.0
Paper manufactures	40	102.3	101.3	101.7	-1.0	0.4	2.2
Textile manufactures	20	99.6	99.6	99.6	-	-	1.4
Non-metal mineral manufactures nes	31	94.4	94.4	94.5	-	0.1	1.0
Iron & steel	96	88.3	88.6	91.1	0.4	2.8	9.6
Non-ferrous metals	76	102.1	100.2	101.4	-1.8	1.1	-3.3
Manufactures of metals nes	90	100.3	100.5	100.5	0.2	-	0.5
Machinery & Transport Equipment	4,595	94.7	94.9	95.7	0.2	0.8	0.6
Pow er-generating machinery & equipment	188	107.7	108.0	108.0	0.3	0.1	2.1
Machinery specialized for particular industries	397	92.4	94.6	94.9	2.3	0.4	2.6
Metal w orking machinery	28	116.3	111.6	111.5	-4.0	-0.1	2.2
General industrial machinery	243	102.4	102.2	102.4	-0.1	0.2	-0.3
Office machines & data-processing machines	680	97.9	98.1	98.8	0.2	0.8	1.5
Telecommunication apparatus	336	74.0	73.7	73.8	-0.4	0.2	-10.5
Electrical machinery apparatus nes, electrical parts	2,582	93.9	93.9	95.0	0.1	1.1	1.3
Road vehicles	141	115.6	116.0	115.8	0.3	-0.2	-0.6
Miscellaneous Manufactured Articles	796	100.8	100.7	100.8	-0.2	0.1	-0.5
Prefab building, sanitary plumbing, lighting nes	6	138.9	139.4	137.7	0.3	-1.2	13.9
Furniture, bedding, mattresses, cushions & others	5	113.7	114.0	114.1	0.2	0.1	5.5
Travel goods, handbags & similar containers	11	136.5	134.8	136.8	-1.3	1.5	13.2
Articles of apparel & clothing accessories	33	102.9	102.8	105.1	-0.1	2.3	2.3
Footw ear	8	101.9	102.0	101.9	-	-	0.2
Professional scientific & controlling instruments	264	105.8	105.9	106.2	0.1	0.3	-0.1
Photographic & optical goods nes; w atches & clocks	86	93.0	92.5	92.6	-0.5	0.1	-2.3
Miscellaneous manufactured articles nes	383	97.2	96.9	96.6	-0.3	-0.3	-1.5

**Table 3 Import Price Index**

Section	All Items	Non-oil Items	Food & Live Animals	Beverages & Tobacco	Crude Materials	Mineral Fuels	Animal & Vegetable Oils, Fats & Waxes	Chemicals & Chemical Products	Manufactured Goods	Machinery & Transport Equipment	Misc. Manufactured Articles
Weights	10,000	6,684	215	86	83	3,316	37	694	635	4,205	729
<b>Index (2012=100)</b>											
2014	<b>94.5</b>	<b>97.3</b>	104.2	102.1	93.4	88.8	82.1	97.9	97.7	96.8	97.4
2015	<b>82.5</b>	<b>97.7</b>	101.5	104.7	88.0	52.0	70.1	92.0	94.2	98.7	100.5
2016	<b>78.1</b>	<b>95.7</b>	99.0	104.4	81.8	42.8	76.0	88.1	87.7	97.3	101.3
2017	<b>82.7</b>	<b>96.3</b>	100.6	105.1	84.0	55.4	78.8	90.8	91.6	97.0	101.2
2017											
Oct	<b>83.0</b>	<b>96.0</b>	100.5	104.8	83.8	56.7	77.2	91.2	93.1	96.5	100.8
Nov	<b>84.2</b>	<b>95.9</b>	100.7	104.6	83.7	60.6	75.8	91.0	92.9	96.4	100.5
Dec	<b>84.0</b>	<b>95.6</b>	100.8	104.5	83.3	60.8	72.7	91.7	92.7	96.0	99.6
2018											
Jan	<b>84.6</b>	<b>95.1</b>	99.5	103.8	83.4	63.3	74.0	91.0	92.7	95.4	99.4
Feb	<b>84.1</b>	<b>95.4</b>	99.4	103.9	83.6	61.4	73.7	92.0	93.2	95.7	99.3
Mar	<b>83.6</b>	<b>94.6</b>	97.2	103.8	83.7	61.4	72.7	92.2	93.2	94.6	99.1
Apr	<b>84.5</b>	<b>94.3</b>	97.2	103.9	83.9	64.8	72.3	92.7	93.9	93.9	99.3
May	<b>87.8</b>	<b>95.4</b>	98.2	104.3	84.4	72.3	72.1	93.9	95.6	95.0	99.7
Jun	<b>88.2</b>	<b>95.7</b>	98.6	105.2	85.1	73.1	70.4	95.0	96.1	95.2	99.6
Jul	<b>88.6</b>	<b>95.9</b>	100.0	105.7	83.9	73.8	68.7	95.0	96.4	95.5	99.6
Aug	<b>88.6</b>	<b>95.8</b>	100.8	105.7	83.0	74.1	67.6	94.8	96.4	95.3	99.5
Sep	<b>89.5</b>	<b>95.6</b>	100.6	105.7	83.2	77.3	66.7	95.2	96.2	94.9	99.4
Oct	<b>90.8</b>	<b>95.8</b>	101.1	105.6	83.8	80.8	64.9	95.6	96.1	95.0	100.1
<b>Percentage Change over same period of previous year (%)</b>											
2015	<b>-12.6</b>	<b>0.4</b>	-2.6	2.5	-5.8	-41.5	-14.6	-6.0	-3.6	2.0	3.2
2016	<b>-5.3</b>	<b>-2.0</b>	-2.5	-0.3	-7.1	-17.8	8.5	-4.3	-7.0	-1.4	0.8
2017	<b>5.8</b>	<b>0.6</b>	1.7	0.7	2.7	29.5	3.7	3.1	4.5	-0.3	-0.1
2017											
Oct	<b>3.4</b>	<b>0.8</b>	0.4	0.5	3.3	13.5	-0.4	3.0	5.8	-	-1.0
Nov	<b>4.1</b>	<b>-0.9</b>	-0.3	-0.3	0.4	24.3	-6.1	1.6	3.0	-1.7	-1.8
Dec	<b>-0.4</b>	<b>-2.5</b>	-1.4	-1.1	-2.4	6.9	-14.8	-0.2	1.4	-3.4	-2.7
2018											
Jan	<b>-0.2</b>	<b>-2.6</b>	-2.0	-1.9	-2.7	8.2	-14.7	-2.2	1.1	-3.1	-3.2
Feb	<b>-0.1</b>	<b>-1.7</b>	-1.6	-1.6	-3.2	5.4	-13.8	-0.2	1.6	-2.1	-2.8
Mar	<b>1.5</b>	<b>-1.9</b>	-3.2	-1.1	-1.5	13.7	-11.2	0.9	2.0	-2.7	-2.5
Apr	<b>1.7</b>	<b>-2.7</b>	-2.9	-1.0	-1.0	16.9	-8.5	1.8	3.4	-4.2	-2.7
May	<b>6.6</b>	<b>-1.4</b>	-2.1	-0.9	0.7	35.7	-10.3	3.7	5.5	-3.1	-1.7
Jun	<b>9.1</b>	<b>-0.7</b>	-1.8	0.1	3.0	47.5	-9.8	5.9	6.2	-2.4	-1.7
Jul	<b>10.0</b>	<b>0.5</b>	-0.5	0.8	1.6	46.1	-9.6	7.2	6.8	-1.1	-0.9
Aug	<b>9.2</b>	<b>0.3</b>	0.3	0.2	-	41.9	-10.3	6.3	5.4	-0.9	-1.1
Sep	<b>9.2</b>	<b>0.1</b>	-0.4	0.3	-0.7	41.1	-13.9	6.0	4.6	-1.0	-1.4
Oct	<b>9.4</b>	<b>-0.3</b>	0.6	0.8	-	42.6	-15.9	4.8	3.3	-1.5	-0.6



**Table 4 Export Price Index**

Section	All Items	Non-oil Items	Food & Live Animals	Beverages & Tobacco	Crude Materials	Mineral Fuels	Animal & Vegetable Oils, Fats & Waxes	Chemicals & Chemical Products	Manufactured Goods	Machinery & Transport Equipment	Misc. Manufactured Articles
Weights	10,000	7,395	124	87	60	2,605	8	1,344	381	4,595	796
<b>Index (2012=100)</b>											
2014	95.0	97.3	101.5	100.2	84.0	88.6	90.4	100.3	99.3	96.9	93.6
2015	88.5	99.8	103.6	107.2	74.8	56.3	84.6	97.5	96.3	101.2	97.8
2016	83.7	97.1	100.7	109.4	69.8	45.6	84.6	92.5	92.9	98.2	101.4
2017	86.1	96.2	98.6	107.5	80.2	57.3	89.0	93.3	95.4	96.1	102.0
2017											
Oct	86.1	95.5	98.0	105.9	79.2	59.3	87.0	93.1	96.2	95.1	101.3
Nov	86.6	95.0	98.6	105.7	78.5	62.7	87.1	93.0	95.7	94.5	101.1
Dec	86.5	94.7	98.2	105.2	78.8	63.4	86.6	93.8	95.3	93.9	100.2
2018											
Jan	86.8	94.4	99.1	104.9	79.4	65.2	85.8	94.4	96.2	93.3	99.5
Feb	86.2	94.4	98.0	105.4	79.8	63.1	85.5	94.6	96.7	93.2	99.1
Mar	86.0	94.1	97.6	105.3	79.4	62.8	85.6	94.0	95.9	93.0	99.2
Apr	87.0	94.2	96.7	104.0	79.5	66.7	85.6	94.1	96.8	93.1	99.2
May	89.3	95.2	96.9	105.7	80.6	72.7	86.2	95.3	97.6	94.1	99.8
Jun	89.9	95.5	97.0	106.1	80.5	73.9	85.6	95.9	97.8	94.4	100.2
Jul	90.5	96.0	98.1	106.3	80.8	74.8	88.1	96.7	97.7	94.7	101.2
Aug	90.5	96.0	99.2	106.7	78.8	75.2	87.6	96.7	97.6	94.7	100.8
Sep	91.2	96.1	99.5	106.2	78.2	77.2	87.4	97.0	97.2	94.9	100.7
Oct	92.4	96.6	100.2	106.1	78.0	80.4	87.2	97.1	98.1	95.7	100.8
<b>Percentage Change over same period of previous year (%)</b>											
2015	-6.9	2.6	2.1	7.0	-11.0	-36.4	-6.4	-2.8	-3.0	4.4	4.5
2016	-5.4	-2.7	-2.8	2.0	-6.7	-19.0	-	-5.2	-3.6	-3.0	3.6
2017	2.9	-0.9	-2.2	-1.7	14.9	25.7	5.2	0.9	2.7	-2.1	0.7
2017											
Oct	1.1	-1.5	-2.2	-4.0	10.9	15.1	0.5	2.0	3.7	-3.1	-0.4
Nov	0.8	-3.5	-3.3	-4.6	5.9	25.0	-0.1	-0.2	0.4	-5.3	-1.3
Dec	-2.4	-5.0	-4.3	-5.9	-1.6	10.0	-3.2	-2.1	-1.3	-6.5	-2.9
2018											
Jan	-2.3	-4.8	-0.7	-5.0	-4.4	9.5	-6.6	-0.2	-	-6.6	-4.4
Feb	-2.0	-3.9	-1.6	-4.3	-4.5	7.1	-8.9	-0.4	1.4	-5.3	-4.2
Mar	-0.7	-3.5	-1.0	-3.2	-4.8	13.7	-8.4	-1.0	0.6	-4.7	-3.5
Apr	0.7	-2.8	-3.3	-4.2	-2.5	18.2	-7.0	0.1	1.8	-3.9	-3.5
May	3.9	-1.8	-2.8	-2.0	1.0	32.5	-4.0	1.9	2.6	-3.1	-2.7
Jun	6.5	-0.3	-2.4	-2.3	3.1	42.5	-2.4	3.8	4.0	-1.5	-1.8
Jul	7.2	0.5	0.9	-0.5	4.6	41.5	1.3	5.4	3.2	-0.9	-0.6
Aug	7.2	1.2	2.4	-	-0.2	36.8	2.0	5.8	2.3	0.1	-0.5
Sep	7.2	1.6	2.7	0.3	-1.9	33.3	1.9	5.6	1.4	0.9	-0.4
Oct	7.4	1.2	2.3	0.2	-1.5	35.6	0.2	4.3	2.0	0.6	-0.5

### **NOTATIONS**

nes            not elsewhere specified  
-                nil or negligible

### **NOTES**

The Import and Export Price Indices report contains statistics that are the most recent available at the time of its preparation.

Some statistics, particularly those for the most recent time periods, are provisional and may be subject to revision in later issues.