



Import & Export Price Indices October 2020



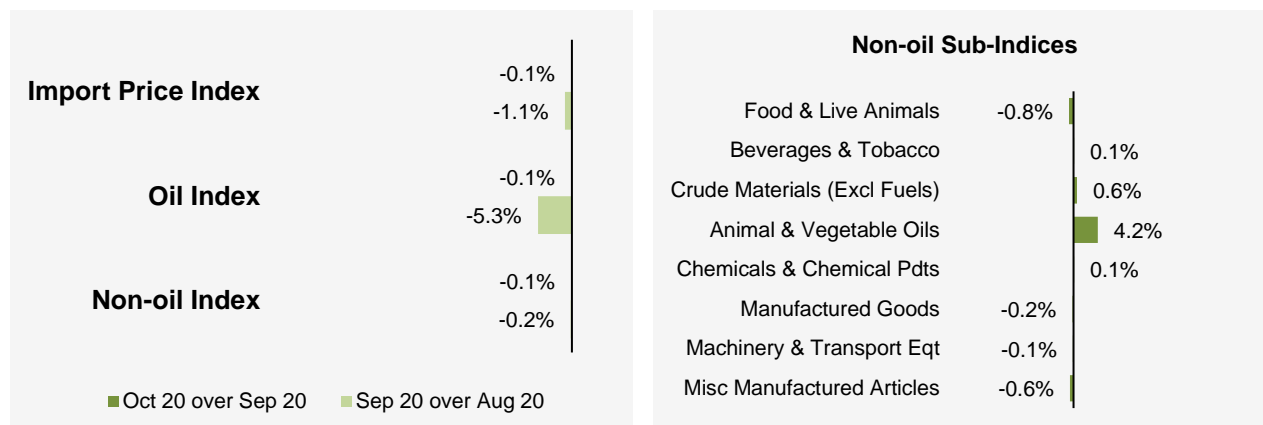
IMPORT AND EXPORT PRICE INDICES, October 2020
ISSN 2591-7463

© Department of Statistics, Ministry of Trade & Industry, Republic of Singapore

Reproducing or quoting any part of this publication is permitted, provided this publication is accredited as the source. Please refer to the SingStat Website Terms of Use (<http://www.singstat.gov.sg/terms-of-use>) for more details on the conditions of use of this publication.

Import Price Index (2018 = 100) October 2020

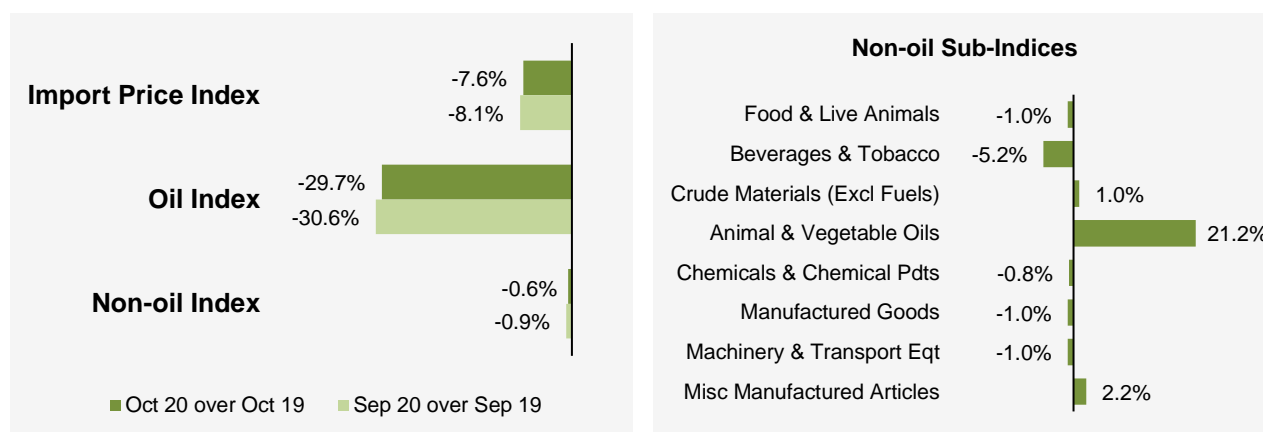
Month-on-Month Change



The Import Price Index fell 0.1% in October 2020, following the 1.1% decrease in September 2020. The Oil index declined 0.1%, after the 5.3% decrease in the previous month. The Non-oil index fell 0.1%, continuing the 0.2% decline in September 2020.

Among the Non-oil sub-indices, the declines led by the Miscellaneous Manufactured Articles (-0.6%) and Machinery & Transport Equipment (-0.1%) indices were partially moderated by the increases led by the Crude Materials (0.6%) and Chemicals & Chemical Products (0.1%) indices.

Year-on-Year Change

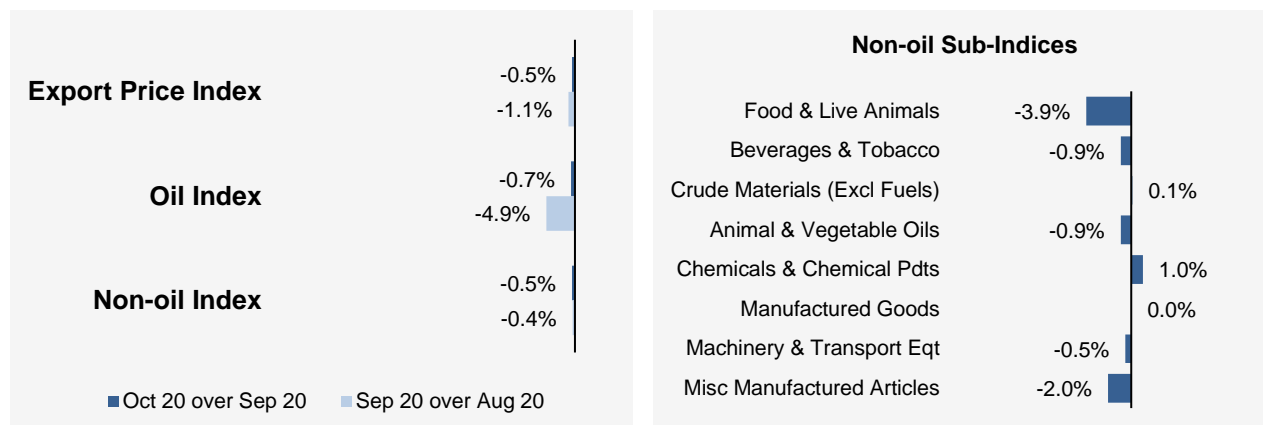


The Import Price Index fell 7.6% in October 2020 from a year ago, extending the 8.1% decline in September 2020. The Oil and Non-oil indices declined 29.7% and 0.6% respectively.

For the Non-oil sub-indices, lower prices of Beverages & Tobacco (-5.2%), Machinery & Transport Equipment (-1.0%), Manufactured Goods (-1.0%), Food & Live Animals (-1.0%) and Chemicals & Chemical Products (-0.8%) were partially offset by higher prices of Animal & Vegetable Oils (21.2%), Miscellaneous Manufactured Articles (2.2%) and Crude Materials (1.0%).

Export Price Index (2018 = 100) October 2020

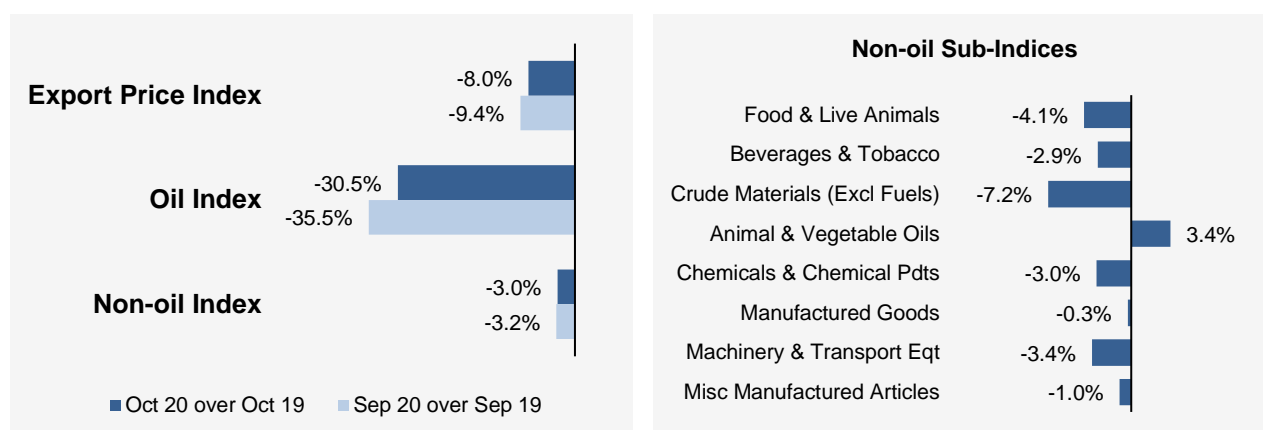
Month-on-Month Change



The Export Price Index decreased 0.5% in October 2020, following the 1.1% decline in September 2020. The Oil index fell 0.7%, after the 4.9% decrease in the previous month. The Non-oil index fell 0.5%, continuing the 0.4% decline in September 2020.

Among the Non-oil sub-indices, the declines were led by the Miscellaneous Manufactured Articles (-2.0%) index, due mainly to lower prices of semiconductor media, and the Machinery & Transport Equipment (-0.5%) index. The declines were partially moderated by increases in the Chemicals & Chemical Products (1.0%) index, due mainly to higher prices of polymer products, and the Crude Materials (0.1%) index.

Year-on-Year Change



The Export Price Index fell 8.0% in October 2020 from a year ago, following the 9.4% decrease in September 2020. The Oil and Non-oil indices declined 30.5% and 3.0% respectively.

For the Non-oil sub-indices, lower prices of Crude Materials (-7.2%), Food & Live Animals (-4.1%), Machinery & Transport Equipment (-3.4%), Chemicals & Chemical Products (-3.0%), Beverages & Tobacco (-2.9%), Miscellaneous Manufactured Articles (-1.0%) and Manufactured Goods (-0.3%) were partially offset by higher prices of Animal & Vegetable Oils (3.4%).

Technical Note

The **Import Price Index (IPI)** is used primarily as an indicator to track the price trends of imported goods into Singapore. Prices of imports, valued at cif (cost, insurance and freight) are obtained monthly from major importers. The weighting pattern of the index is derived from import statistics for 2018.

The **Export Price Index (EPI)** measures changes in the price of all exports of merchandise from Singapore, including re-exports. In general, prices are obtained from major exporters of the selected commodities. Prices used in the index computation, are the prices of goods that physically leave Singapore's main ports of export; also termed as free on board prices. The weights of the index are derived from the distribution of export by commodity in 2018.

Index Formula

The 2018-based series is compiled using the Laspeyres formula where the price and weight reference periods are aligned to the year 2018. The geometric mean formula has been adopted in the computation of unweighted elementary aggregate price indices. The arithmetic mean formula is applied in compiling indices at higher levels of aggregation where weights of specific sub-indices are available.

Measurement of Changes in Price Indices

Change over previous month compares the index of the month with that of the preceding month. Such comparisons measure the change in the price index between two consecutive months. They serve as useful short-term indicators of the price movements.

Change over same period of previous year measures change in the index over a twelve-month period. Such comparisons compare the movement in the price index between similar months in two consecutive years.

Linking the Old 2012-Based Price Index Series to the New 2018-Based Price Index Series

The IPI and EPI have been rebased from base year 2012 to base year 2018. To facilitate comparison of the historical price indices across base years, the old 2012-based series are linked to the new 2018-based series by re-scaling them via a Linked Coefficient. The Linked Coefficient is the ratio of the annual 2018-based index in 2018 to the annual 2012-based index in 2018.

Example : Linking the old Iron & Steel Index series for IPI prior to 2018, to the 2018-based Iron & Steel Index (2018=100)

1) Calculate the linked coefficient

Year	Iron & Steel Index (2012=100)	Iron & Steel Index (2018=100)	Linked Coefficient
2018	93.4	100.0	$100.0 \div 93.4 = 1.071$

2) Re-scaling the old series to the 2018-based series using the Linked Coefficient

Year	Month	Iron & Steel Index (2012=100)	Iron & Steel Index (2018=100)
2016	Dec	84.0	$84.0 \times 1.071 = 90.0$
2017	Jan	85.6	$85.6 \times 1.071 = 91.7$

Linking Method for Maintaining the Old Index Reference Period

To continue the old 2012-based index series going forward in time, re-scale the new 2018-based index series to the old base year 2012 level, via a Linked Coefficient. The Linked Coefficient is the ratio of the annual 2012-based index in 2018 to the annual 2018-based index in 2018.

Example : Linking the new 2018-based Iron & Steel Index series for IPI to the 2012-based Iron & Steel Index (2012=100)

1) Calculate the linked coefficient

Year	Iron & Steel Index (2018=100)	Iron & Steel Index (2012=100)	Linked Coefficient
2018	100.0	93.4	$93.4 \div 100.0 = 0.934$

2) Re-scaling the new series to the 2012-based series using the Linked Coefficient

Year	Month	Iron & Steel Index (2018=100)	Iron & Steel Index (2012=100)
2019	Jan	98.6	$98.6 \times 0.934 = 92.1$
2019	Feb	102.4	$102.4 \times 0.934 = 95.6$

Index Revision

The indices may be revised when late returns and amendments received from respondents are incorporated.

Dissemination of Data

The Import and Export Price Indices are available on the SingStat Website (www.singstat.gov.sg/tablebuilder). Excel tables for this month's report are available at <https://www.singstat.gov.sg/publications/economy/import-export-price-indices> or through the QR code below:



Import Price Index (2018 = 100) October 2020

Chart 1: Index

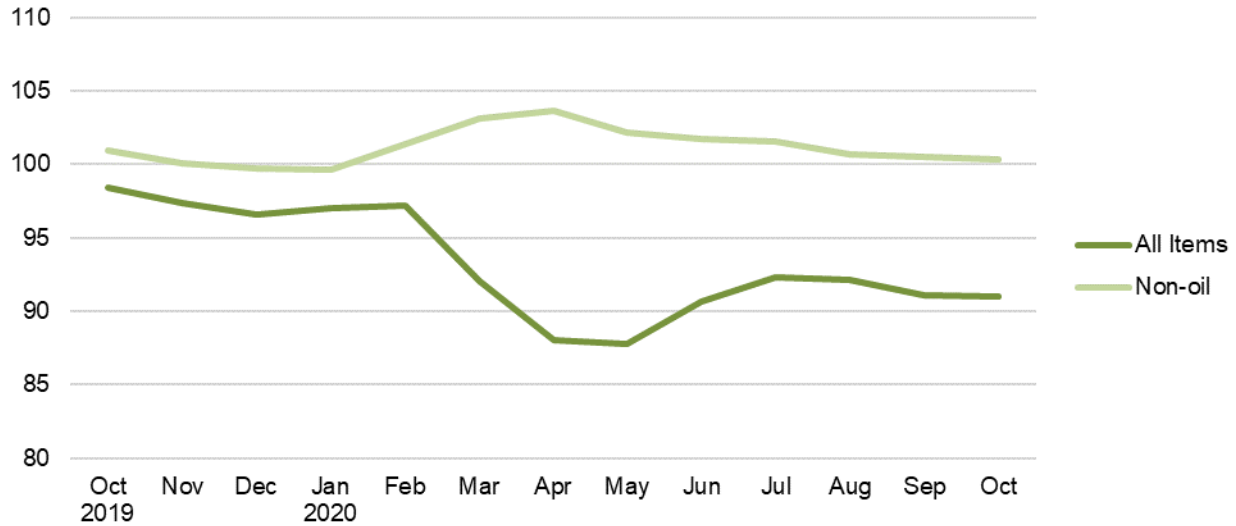


Chart 2: Month-on-Month Change

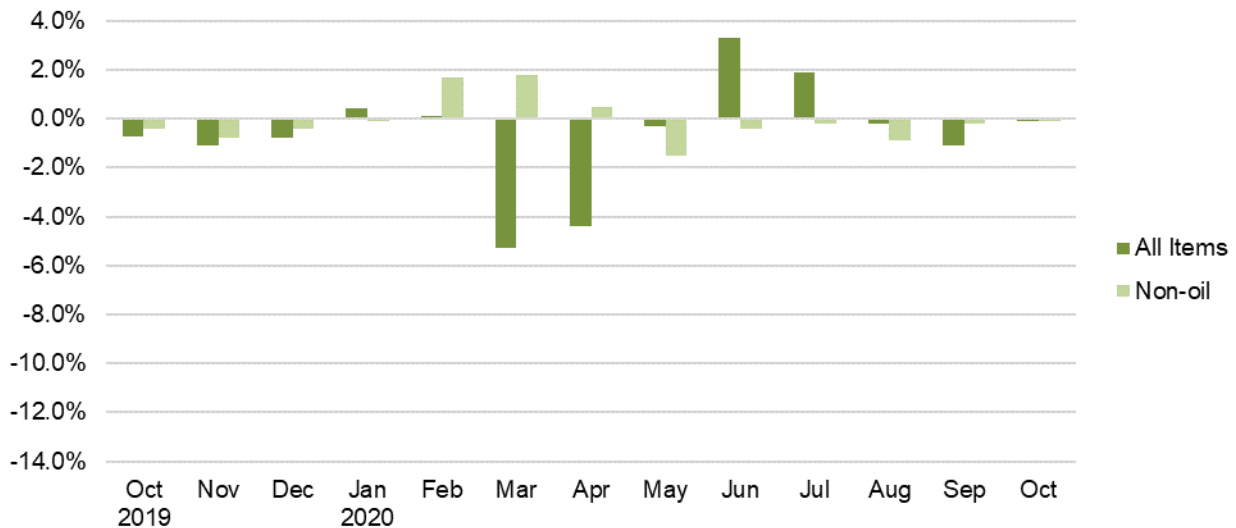
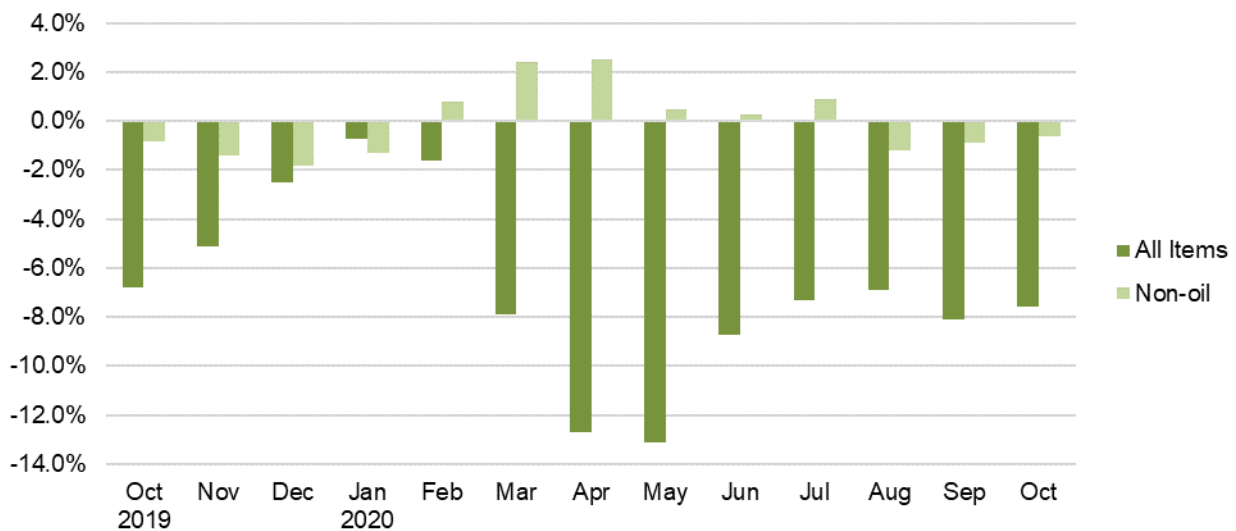


Chart 3: Year-on-Year Change



Export Price Index (2018 = 100) October 2020

Chart 4: Index

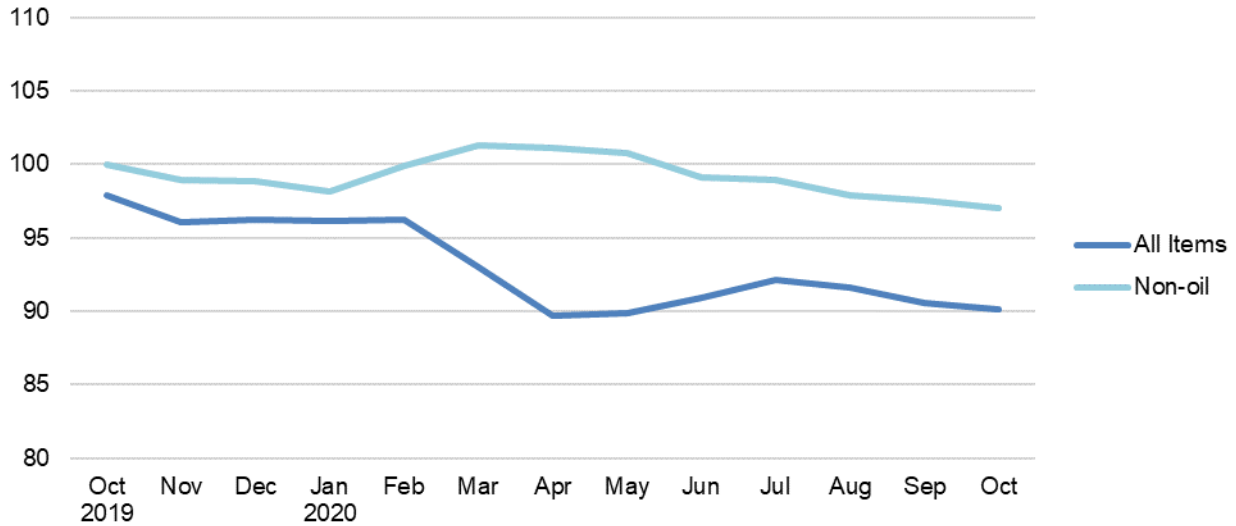


Chart 5: Month-on-Month Change

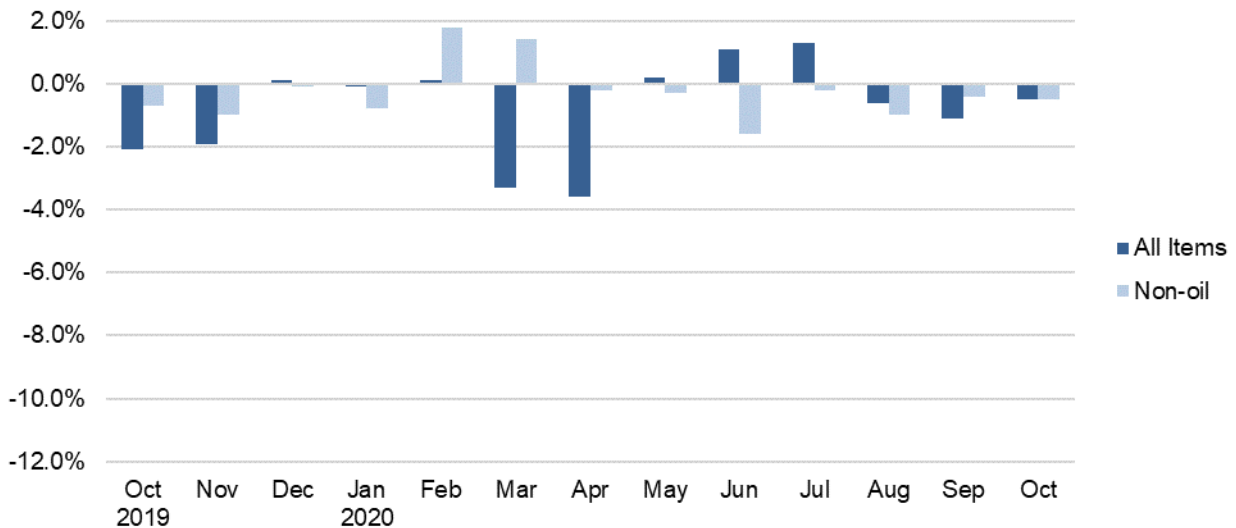


Chart 6: Year-on-Year Change

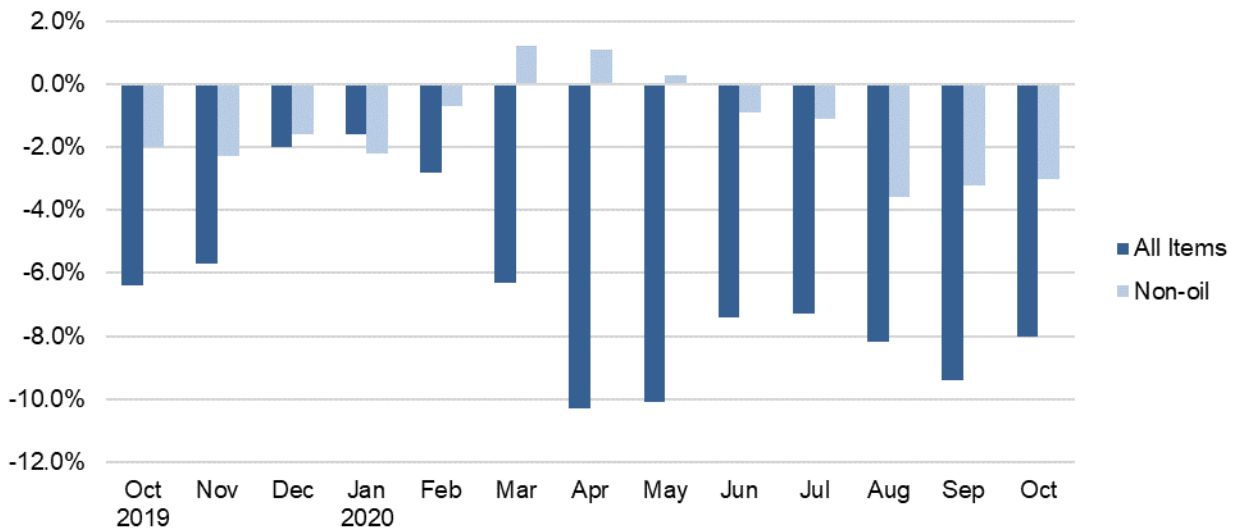


Table 1 Import Price Index

October 2020

Commodity section / division	Weights	Index (2018=100)			% Change		
		Aug 2020	Sep 2020	Oct 2020	Sep 2020	Oct 2020	Oct 2020
					Aug 2020	Sep 2020	Oct 2019
All Items	10,000	92.2	91.1	91.0	-1.1	-0.1	-7.6
Non-oil Items	7,410	100.6	100.5	100.4	-0.2	-0.1	-0.6
Food & Live Animals	247	102.8	102.3	101.5	-0.5	-0.8	-1.0
Live animals	9	100.2	100.3	100.0	0.2	-0.3	1.5
Meat & meat preparations	31	106.3	106.3	106.0	-	-0.3	0.6
Dairy products & birds' eggs	30	109.1	105.5	104.8	-3.3	-0.7	-2.9
Fish seafood & preparations	34	94.1	93.9	93.4	-0.2	-0.5	-3.7
Cereals & cereal preparations	24	100.8	100.4	100.1	-0.4	-0.3	-1.4
Vegetables & fruit	48	106.7	107.0	107.3	0.2	0.3	2.9
Sugar, sugar preparations & honey	9	101.6	101.4	101.5	-0.2	0.1	3.0
Coffee, tea, cocoa, spices & manufactures	28	95.8	96.0	90.9	0.3	-5.4	-7.1
Animal feeding stuff (excl unmilled cereals)	4	100.5	100.3	99.7	-0.2	-0.6	2.9
Miscellaneous food preparations	31	105.7	105.1	105.1	-0.6	-	-0.4
Beverages & Tobacco	112	93.8	94.7	94.8	0.9	0.1	-5.2
Beverages	84	94.4	94.4	93.4	-	-1.0	-5.8
Tobacco & manufactures	28	91.9	95.6	99.0	4.0	3.6	-3.6
Crude Materials (excl fuels)	84	100.5	101.2	101.8	0.7	0.6	1.0
Oil seeds & oleaginous fruits	2	113.7	113.2	113.0	-0.4	-0.1	9.5
Crude rubber	19	108.8	108.4	108.0	-0.3	-0.4	-1.0
Cork & w ood	3	93.1	93.1	93.1	-	-	-1.8
Crude fertilizers & minerals	30	101.6	101.4	101.4	-0.2	-0.1	-0.6
Metalliferous ores & metal scrap	17	94.7	98.0	101.3	3.5	3.4	14.2
Crude animal & vegetable materials nes	13	93.9	95.1	95.3	1.3	0.2	-8.0
Mineral Fuels, Lubricants & Related Materials	2,590	67.9	64.3	64.3	-5.3	-0.1	-29.7
Petroleum & products & related materials	2,431	68.6	64.7	64.7	-5.8	-	-29.1
Gas	159	56.3	58.9	58.2	4.5	-1.2	-38.4
Animal & Vegetable Oils, Fats & Waxes	27	101.9	104.1	108.4	2.1	4.2	21.2
Fixed vegetable fats & oils	27	101.9	104.1	108.4	2.1	4.2	21.2
Chemicals & Chemical Products	888	97.8	97.3	97.4	-0.5	0.1	-0.8
Organic chemicals	216	89.2	89.3	89.8	0.2	0.5	-4.7
Inorganic chemicals	35	109.6	107.1	106.3	-2.3	-0.7	5.0
Dyeing, tanning & colouring materials	33	105.8	105.6	104.3	-0.2	-1.2	-2.5
Medicinal & pharmaceutical products	101	104.0	103.6	103.7	-0.4	-	0.7
Essential oils & perfume; toilet cleaning products	147	106.7	106.5	106.5	-0.1	-	7.2
Plastics in primary forms	164	86.8	87.0	87.8	0.3	0.9	-5.3
Plastics in non-primary forms	38	103.6	102.9	103.7	-0.7	0.8	1.3
Chemical materials & products nes	154	103.0	100.8	100.2	-2.1	-0.6	-1.4
Manufactured Goods	505	99.2	99.2	99.0	-	-0.2	-1.0
Rubber manufactures nes	25	100.6	100.3	101.6	-0.3	1.3	-1.0
Paper manufactures	51	90.1	89.9	89.5	-0.2	-0.4	-6.9
Textile manufactures	26	100.3	100.2	99.9	-0.1	-0.4	-2.2
Non-metal mineral manufactures nes	60	103.2	102.5	102.4	-0.7	-0.1	-0.5
Iron & steel	131	96.1	95.8	95.6	-0.3	-0.2	-3.4
Non-ferrous metals	84	104.3	105.9	105.9	1.5	-	4.7
Manufactures of metals nes	128	100.2	100.1	99.5	-0.1	-0.6	-0.1
Machinery & Transport Equipment	4,690	100.3	100.2	100.1	-0.2	-0.1	-1.0
Pow er-generating machinery & equipment	526	111.4	111.1	110.7	-0.3	-0.3	5.5
Machinery specialized for particular industries	306	101.5	101.2	100.7	-0.3	-0.4	-0.9
Metal w orking machinery	23	102.8	102.7	102.6	-0.1	-0.1	5.5
General industrial machinery	281	102.5	102.5	102.4	-	-	0.7
Office machines & data-processing machines	457	96.9	96.7	98.5	-0.3	1.9	-1.3
Telecommunication apparatus	390	87.0	87.0	86.7	0.1	-0.3	-9.5
Electrical machinery apparatus nes, electrical parts	2,542	100.4	100.2	99.9	-0.2	-0.3	-1.3
Road vehicles	164	99.3	99.5	99.4	0.2	-0.1	-1.6
Miscellaneous Manufactured Articles	857	106.5	106.3	105.6	-0.1	-0.6	2.2
Prefab building, sanitary plumbing, lighting nes	12	100.6	103.3	105.7	2.7	2.4	5.0
Furniture, bedding, mattresses, cushions & others	26	106.0	105.9	106.5	-0.1	0.5	1.5
Travel goods, handbags & similar containers	54	101.9	103.0	102.9	1.1	-0.1	-1.7
Articles of apparel & clothing accessories	79	101.2	101.4	101.4	0.1	-	1.2
Footw ear	24	101.9	103.0	103.5	1.0	0.5	3.7
Professional scientific & controlling instruments	275	104.0	103.9	103.6	-0.2	-0.3	-1.1
Photographic & optical goods nes; w atches & clocks	106	105.0	104.9	104.9	-0.1	-	4.2
Miscellaneous manufactured articles nes	283	112.3	111.7	109.7	-0.6	-1.7	5.5

Figures may not sum to total due to rounding.

Table 2 Export Price Index

October 2020

Commodity section / division	Weights	Index (2018=100)			% Change		
		Aug 2020	Sep 2020	Oct 2020	Sep 2020	Oct 2020	Oct 2020
					Aug 2020	Sep 2020	Oct 2019
All Items	10,000	91.6	90.6	90.1	-1.1	-0.5	-8.0
Non-oil Items	8,022	97.9	97.5	97.0	-0.4	-0.5	-3.0
Food & Live Animals	236	94.6	97.0	93.2	2.6	-3.9	-4.1
Dairy products & birds' eggs	5	101.0	101.0	73.3	-0.1	-27.4	-27.6
Fish seafood & preparations	9	89.6	87.4	85.9	-2.4	-1.7	-9.2
Cereals & cereal preparations	7	97.3	96.6	96.3	-0.7	-0.3	-2.9
Vegetables & fruit	8	90.9	89.7	89.4	-1.3	-0.4	0.6
Sugar, sugar preparations & honey	3	101.1	101.6	103.0	0.5	1.3	0.3
Coffee, tea, cocoa, spices & manufactures	26	104.8	103.5	102.8	-1.2	-0.7	-1.1
Animal feeding stuff (excl unmilled cereals)	7	114.1	112.3	111.7	-1.6	-0.5	1.9
Miscellaneous food preparations	171	92.2	96.0	91.8	4.1	-4.3	-4.2
Beverages & Tobacco	103	102.0	101.2	100.3	-0.8	-0.9	-2.9
Beverages	75	101.4	100.4	99.3	-1.0	-1.1	-3.7
Tobacco & manufactures	28	103.6	103.2	102.8	-0.3	-0.4	-1.0
Crude Materials (excl fuels)	91	77.7	79.2	79.3	2.0	0.1	-7.2
Crude rubber	35	73.6	72.5	72.9	-1.5	0.5	-20.1
Pulp and waste paper	26	75.8	78.1	75.4	3.1	-3.5	-4.3
Metalliferous ores & metal scrap	26	82.6	87.0	88.6	5.4	1.8	7.5
Crude animal & vegetable materials nes	4	93.9	94.8	101.4	0.9	7.0	4.9
Mineral Fuels, Lubricants & Related Materials	1,978	65.8	62.6	62.1	-4.9	-0.7	-30.5
Petroleum & products & related materials	1,978	65.8	62.6	62.1	-4.9	-0.7	-30.5
Animal & Vegetable Oils, Fats & Waxes	5	98.4	98.4	97.5	-	-0.9	3.4
Fixed vegetable fats & oils	5	98.4	98.4	97.5	-	-0.9	3.4
Chemicals & Chemical Products	1,525	89.5	89.6	90.5	0.1	1.0	-3.0
Organic chemicals	428	80.2	80.3	81.5	0.2	1.6	-8.3
Inorganic chemicals	14	111.8	110.7	110.8	-1.1	0.2	6.7
Dyeing, tanning & colouring materials	37	97.7	95.8	94.8	-2.0	-1.0	-6.4
Medicinal & pharmaceutical products	250	97.7	97.7	97.6	-0.1	-	1.9
Essential oils & perfume; toilet cleaning products	232	98.3	98.2	99.1	-	0.9	-1.7
Plastics in primary forms	355	81.4	82.2	84.1	0.9	2.3	-4.5
Plastics in non-primary forms	29	108.2	107.9	107.5	-0.2	-0.4	6.8
Chemical materials & products nes	181	98.5	98.3	98.3	-0.3	-	1.1
Manufactured Goods	318	98.2	98.3	98.3	0.1	-	-0.3
Rubber manufactures nes	22	98.9	98.7	99.4	-0.2	0.7	-0.2
Paper manufactures	41	97.4	96.3	96.6	-1.1	0.3	-3.3
Textile manufactures	19	101.6	101.7	101.6	-	-0.1	0.8
Non-metal mineral manufactures nes	14	99.6	99.4	99.1	-0.2	-0.4	-0.3
Iron & steel	66	95.6	95.4	94.9	-0.2	-0.5	-6.0
Non-ferrous metals	67	97.2	99.2	99.7	2.1	0.5	5.4
Manufactures of metals nes	89	100.0	99.7	99.4	-0.3	-0.3	1.1
Machinery & Transport Equipment	4,836	99.8	99.1	98.5	-0.8	-0.5	-3.4
Power-generating machinery & equipment	418	100.9	100.6	100.3	-0.4	-0.3	-0.5
Machinery specialized for particular industries	437	97.2	96.9	97.3	-0.4	0.5	-3.4
Metal working machinery	25	100.5	100.0	99.5	-0.5	-0.5	-2.5
General industrial machinery	212	102.4	101.9	101.9	-0.5	-	-0.3
Office machines & data-processing machines	467	101.3	100.4	100.1	-0.9	-0.2	-3.5
Telecommunication apparatus	366	89.9	88.3	86.6	-1.8	-2.0	-8.5
Electrical machinery apparatus nes, electrical parts	2,814	100.7	99.9	99.3	-0.8	-0.7	-3.6
Road vehicles	98	105.4	105.3	105.0	-0.1	-0.3	2.3
Miscellaneous Manufactured Articles	908	104.2	103.7	101.7	-0.4	-2.0	-1.0
Prefab building, sanitary plumbing, lighting nes	3	105.0	107.0	107.1	2.0	0.1	7.9
Furniture, bedding, mattresses, cushions & others	5	102.3	102.1	101.8	-0.2	-0.3	0.4
Travel goods, handbags & similar containers	37	97.5	96.4	94.6	-1.2	-1.9	-3.2
Articles of apparel & clothing accessories	40	113.8	113.6	111.7	-0.2	-1.7	0.5
Footwear	14	94.5	94.2	93.8	-0.3	-0.4	-5.7
Professional scientific & controlling instruments	365	92.9	92.1	91.3	-0.9	-0.9	-7.2
Photographic & optical goods nes; watches & clocks	98	103.7	102.8	102.9	-0.9	0.2	1.7
Miscellaneous manufactured articles nes	345	116.2	116.4	112.2	0.2	-3.6	4.5

Figures may not sum to total due to rounding.

Table 3 Import Price Index

Section	All Items	Non-oil Items	Food & Live Animals	Beverages & Tobacco	Crude Materials	Mineral Fuels	Animal & Vegetable Oils, Fats & Waxes	Chemicals & Chemical Products	Manufactured Goods	Machinery & Transport Equipment	Misc. Manufactured Articles
Weights	10,000	7,410	247	112	84	2,590	27	888	505	4,690	857
Index (2018=100)											
2016	90.1	100.4	99.5	99.6	97.8	61.5	110.6	93.8	92.3	102.4	101.8
2017	95.3	101.0	101.2	100.2	100.5	79.7	114.7	96.7	96.4	102.2	101.6
2018	100.0	100.0	100.0	100.0	100.0	100.0	100.0	100.0	100.0	100.0	100.0
2019	99.0	100.9	101.5	100.4	101.2	93.4	90.4	98.6	99.9	101.3	102.0
2019											
Oct	98.4	100.9	102.5	100.0	100.8	91.4	89.5	98.2	100.0	101.1	103.4
Nov	97.4	100.1	101.6	99.7	100.7	89.5	93.7	97.3	99.6	100.2	102.4
Dec	96.6	99.7	102.2	99.5	101.1	87.8	98.9	96.4	99.5	99.7	102.2
2020											
Jan	97.0	99.6	103.0	101.3	101.7	89.5	102.9	96.2	98.1	99.7	102.3
Feb	97.2	101.4	103.1	102.3	102.7	85.1	101.6	98.1	99.9	101.4	104.3
Mar	92.0	103.2	103.2	104.0	103.6	60.3	99.0	98.9	100.5	103.6	106.8
Apr	88.0	103.7	104.5	104.1	102.0	43.1	96.7	97.6	100.4	104.4	108.0
May	87.7	102.1	104.4	97.0	101.8	46.5	94.2	96.6	100.2	102.4	107.8
Jun	90.6	101.7	102.9	97.0	101.4	58.8	96.6	96.6	99.6	102.1	106.7
Jul	92.3	101.5	103.3	93.9	101.9	66.0	98.1	98.1	99.7	101.6	106.7
Aug	92.2	100.6	102.8	93.8	100.5	67.9	101.9	97.8	99.2	100.3	106.5
Sep	91.1	100.5	102.3	94.7	101.2	64.3	104.1	97.3	99.2	100.2	106.3
Oct	91.0	100.4	101.5	94.8	101.8	64.3	108.4	97.4	99.0	100.1	105.6
Percentage Change over same period of previous year (%)											
2017	5.8	0.6	1.7	0.7	2.7	29.5	3.7	3.1	4.5	-0.3	-0.1
2018	4.9	-1.0	-1.2	-0.2	-0.5	25.5	-12.8	3.4	3.7	-2.1	-1.6
2019	-1.0	0.9	1.5	0.4	1.2	-6.6	-9.6	-1.4	-0.1	1.3	2.0
2019											
Oct	-6.8	-0.8	1.3	-0.9	-	-21.7	-5.1	-3.5	-0.6	-1.0	2.6
Nov	-5.1	-1.4	0.8	-1.3	-	-15.3	3.6	-3.7	-0.4	-1.9	2.1
Dec	-2.5	-1.8	1.2	-1.4	0.7	-4.5	9.6	-3.8	-0.6	-2.5	1.8
2020											
Jan	-0.7	-1.3	1.7	0.5	2.0	1.3	12.7	-2.9	-1.3	-1.9	1.4
Feb	-1.6	0.8	2.9	1.7	2.6	-9.2	12.0	-0.6	-0.5	0.5	3.5
Mar	-7.9	2.4	3.0	3.3	3.3	-38.4	10.4	-0.2	-0.1	2.4	6.2
Apr	-12.7	2.5	4.3	3.4	0.4	-56.8	7.2	-2.0	0.4	2.7	7.3
May	-13.1	0.5	3.4	-3.9	-1.1	-53.1	5.7	-2.9	-0.2	0.1	6.2
Jun	-8.7	0.3	1.1	-3.9	-0.6	-36.6	10.3	-2.6	-	0.1	4.7
Jul	-7.3	0.9	1.0	-6.0	0.5	-31.9	13.8	-0.3	0.5	0.7	4.4
Aug	-6.9	-1.2	0.2	-6.9	-1.9	-25.1	15.1	-1.1	-0.8	-1.9	2.3
Sep	-8.1	-0.9	-0.4	-5.7	-	-30.6	16.8	-1.6	-1.3	-1.3	2.4
Oct	-7.6	-0.6	-1.0	-5.2	1.0	-29.7	21.2	-0.8	-1.0	-1.0	2.2

Table 4 Export Price Index

Section	All Items	Non-oil Items	Food & Live Animals	Beverages & Tobacco	Crude Materials	Mineral Fuels	Animal & Vegetable Oils, Fats & Waxes	Chemicals & Chemical Products	Manu- factured Goods	Machinery & Transport Equipment	Misc. Manu- factured Articles
Weights	10,000	8,022	236	103	91	1,978	5	1,525	318	4,836	908
Index (2018=100)											
2016	94.2	101.8	102.2	103.4	88.0	64.7	97.7	96.8	95.6	104.2	100.8
2017	96.9	100.9	100.0	101.7	101.1	81.4	102.8	97.7	98.2	102.0	101.5
2018	100.0	100.0	100.0	100.0	100.0	100.0	100.0	100.0	100.0	100.0	100.0
2019	98.6	100.1	97.6	102.6	90.6	92.4	97.1	94.8	98.7	101.8	101.9
2019											
Oct	97.9	100.0	97.2	103.3	85.4	89.4	94.3	93.3	98.6	102.0	102.7
Nov	96.1	99.0	97.0	102.4	82.3	84.3	94.9	92.8	97.9	100.8	101.5
Dec	96.2	98.9	95.7	102.9	81.6	85.3	97.9	91.8	97.5	101.1	101.3
2020											
Jan	96.1	98.1	94.9	103.5	82.6	88.0	99.7	91.0	97.0	100.3	100.7
Feb	96.2	99.9	97.5	105.5	82.2	81.3	105.4	93.0	97.5	102.0	102.7
Mar	93.0	101.3	96.1	106.3	82.4	59.4	110.8	93.4	97.3	103.7	105.6
Apr	89.7	101.1	93.0	107.4	82.0	43.5	106.5	92.2	96.7	103.9	105.6
May	89.9	100.7	94.6	106.7	83.5	45.9	105.3	90.6	96.9	103.8	105.4
Jun	90.9	99.1	93.9	103.8	82.9	57.7	102.5	89.9	97.1	101.6	104.1
Jul	92.1	98.9	95.1	102.2	79.2	64.4	99.1	89.6	98.1	101.5	104.1
Aug	91.6	97.9	94.6	102.0	77.7	65.8	98.4	89.5	98.2	99.8	104.2
Sep	90.6	97.5	97.0	101.2	79.2	62.6	98.4	89.6	98.3	99.1	103.7
Oct	90.1	97.0	93.2	100.3	79.3	62.1	97.5	90.5	98.3	98.5	101.7
Percentage Change over same period of previous year (%)											
2017	2.9	-0.9	-2.2	-1.7	14.9	25.7	5.2	0.9	2.7	-2.1	0.7
2018	3.2	-0.9	-	-1.7	-1.1	22.9	-2.7	2.3	1.9	-1.9	-1.5
2019	-1.4	0.1	-2.4	2.6	-9.4	-7.6	-2.9	-5.2	-1.3	1.8	1.9
2019											
Oct	-6.4	-2.0	-4.5	1.5	-17.6	-22.2	-5.8	-9.1	-2.2	0.3	-
Nov	-5.7	-2.3	-4.3	-0.1	-20.5	-19.0	-4.7	-8.6	-1.8	-0.1	-1.1
Dec	-2.0	-1.6	-4.5	1.0	-20.9	-3.8	-0.7	-7.4	-1.5	0.6	-0.9
2020											
Jan	-1.6	-2.2	-4.9	1.0	-15.4	1.2	0.6	-5.9	-1.4	-1.1	-1.1
Feb	-2.8	-0.7	-1.7	2.9	-14.8	-11.8	9.1	-3.3	-1.8	-	1.0
Mar	-6.3	1.2	-1.8	4.2	-13.8	-38.0	14.0	-3.0	-2.1	2.5	4.1
Apr	-10.3	1.1	-3.3	5.0	-13.7	-56.6	10.2	-4.0	-2.5	2.5	4.9
May	-10.1	0.3	-2.8	4.1	-11.6	-53.3	8.7	-6.4	-1.9	2.1	3.7
Jun	-7.4	-0.9	-3.9	1.4	-9.4	-36.3	7.9	-5.3	-1.0	-0.1	2.8
Jul	-7.3	-1.1	-3.0	-	-12.4	-33.3	0.4	-5.0	-0.1	-0.4	2.8
Aug	-8.2	-3.6	-3.3	-0.6	-12.8	-28.9	-2.0	-5.5	-1.2	-3.9	0.6
Sep	-9.4	-3.2	-0.9	-1.9	-9.3	-35.5	0.8	-4.8	-1.3	-3.5	0.2
Oct	-8.0	-3.0	-4.1	-2.9	-7.2	-30.5	3.4	-3.0	-0.3	-3.4	-1.0

NOTATIONS

- nes not elsewhere specified
- nil or negligible

NOTES

The Import and Export Price Indices report contains statistics that are the most recent available at the time of its preparation.

Some statistics, particularly those for the most recent time periods, are provisional and may be subject to revision in later issues.