



Import & Export Price Indices September 2021

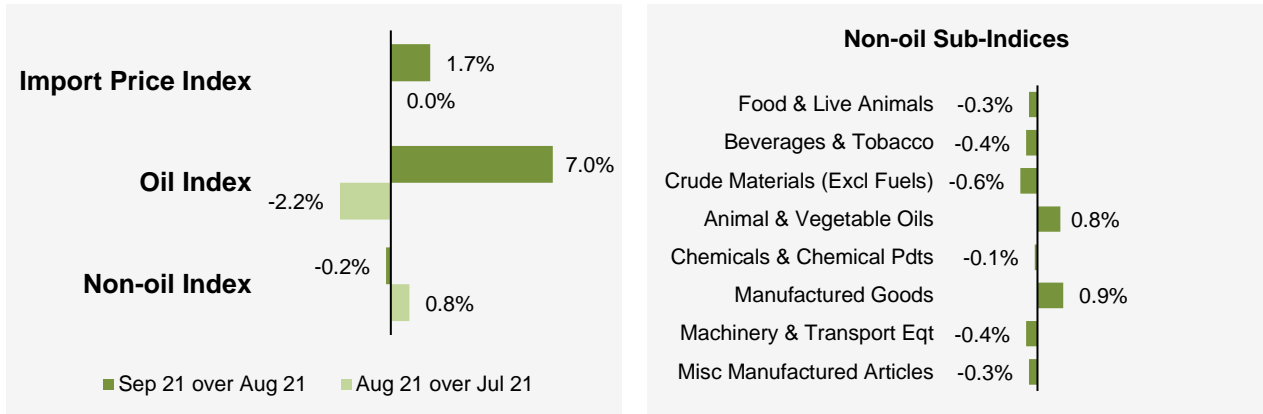
IMPORT AND EXPORT PRICE INDICES, September 2021
ISSN 2591-7463

© Department of Statistics, Ministry of Trade & Industry, Republic of Singapore

Reproducing or quoting any part of this publication is permitted, provided this publication is accredited as the source. Please refer to the SingStat Website Terms of Use (<http://www.singstat.gov.sg/terms-of-use>) for more details on the conditions of use of this publication.

Import Price Index (2018 = 100) September 2021

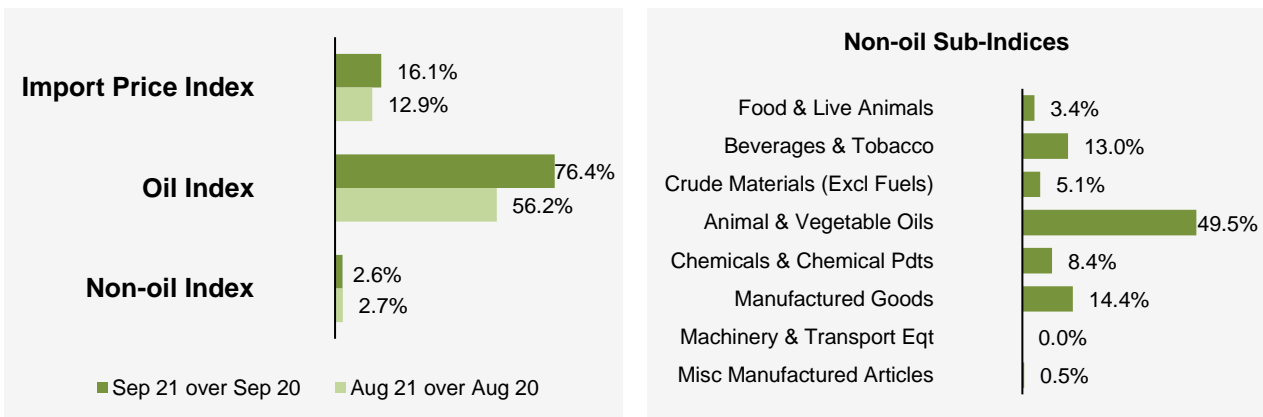
Month-on-Month Change



The Import Price Index rose 1.7% in September 2021. It was unchanged in August 2021. The Oil index gained 7.0%, reversing the 2.2% decrease in the previous month. The Non-oil index fell 0.2% in September 2021, in contrast to the 0.8% gain in August 2021.

Among the Non-oil sub-indices, the decreases led by the Machinery & Transport Equipment (-0.4%) and Miscellaneous Manufactured Articles (-0.3%) indices were partially moderated by increases in the Manufactured Goods (0.9%) and Animal & Vegetable Oils (0.8%) indices.

Year-on-Year Change

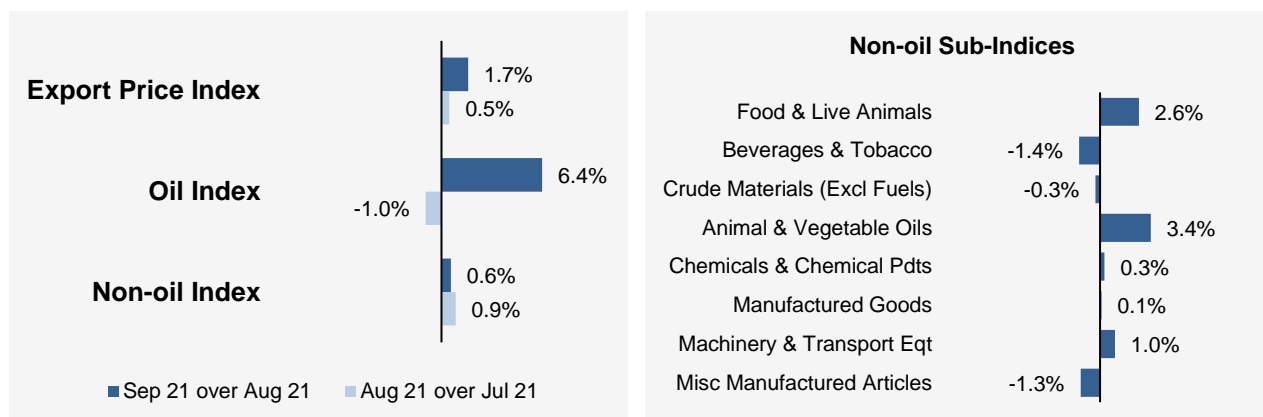


The Import Price Index rose 16.1% in September 2021 from a year ago, extending the 12.9% gain in August 2021. The Oil and Non-oil indices increased 76.4% and 2.6% respectively.

All Non-oil sub-indices rose except for the Machinery & Transport Equipment index which was unchanged. Higher prices of Animal & Vegetable Oils (49.5%), Manufactured Goods (14.4%), Beverages & Tobacco (13.0%), Chemicals & Chemical Products (8.4%), Crude Materials (5.1%), Food & Live Animals (3.4%) and Miscellaneous Manufactured Articles (0.5%) were registered.

Export Price Index (2018 = 100) September 2021

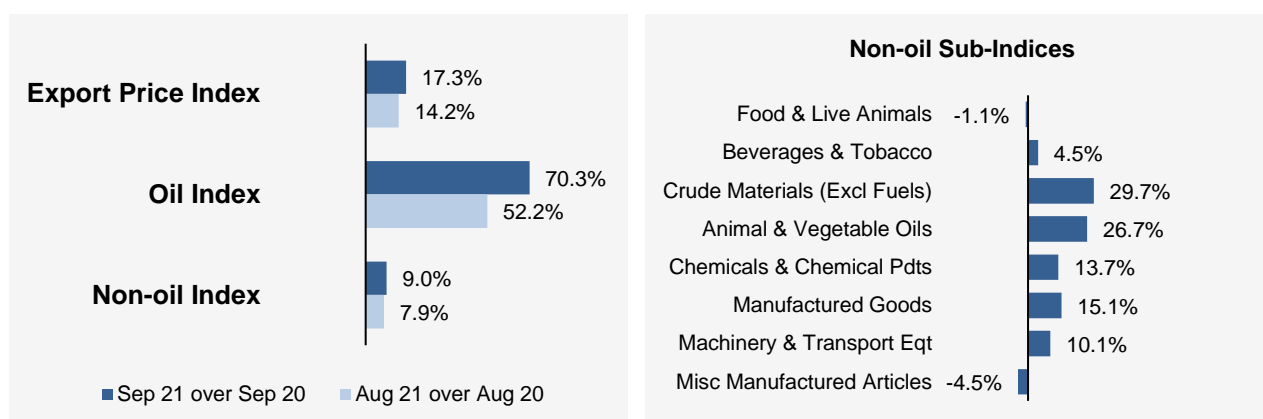
Month-on-Month Change



The Export Price Index increased 1.7% in September 2021, following the 0.5% rise in August 2021. The Oil index rose 6.4%, reversing the 1.0% decrease in the previous month. The Non-oil index grew by 0.6% in September 2021, extending the 0.9% gain in August 2021.

Among the Non-oil sub-indices, the increases were led by the Food & Live Animals (2.6%) and Machinery & Transport Equipment (1.0%) indices, due mainly to higher prices of miscellaneous food preparations and integrated circuits respectively. The increases were partially moderated by declines in the Beverages & Tobacco (-1.4%) and Miscellaneous Manufactured Articles (-1.3%) indices, due mainly to lower prices of alcoholic beverages and smart cards respectively.

Year-on-Year Change



The Export Price Index increased 17.3% in September 2021 from a year ago, following the 14.2% rise in August 2021. The Oil and Non-oil indices went up 70.3% and 9.0% respectively.

For the Non-oil sub-indices, higher prices of Crude Materials (29.7%), Animal & Vegetable Oils (26.7%), Manufactured Goods (15.1%), Chemicals & Chemical Products (13.7%), Machinery & Transport Equipment (10.1%) and Beverages & Tobacco (4.5%) were partially offset by lower prices of Miscellaneous Manufactured Articles (-4.5%) and Food & Live Animals (-1.1%).

Technical Note

The **Import Price Index (IPI)** is used primarily as an indicator to track the price trends of imported goods into Singapore. Prices of imports, valued at cif (cost, insurance and freight) are obtained monthly from major importers. The weighting pattern of the index is derived from import statistics for 2018.

The **Export Price Index (EPI)** measures changes in the price of all exports of merchandise from Singapore, including re-exports. In general, prices are obtained from major exporters of the selected commodities. Prices used in the index computation, are the prices of goods that physically leave Singapore's main ports of export; also termed as free on board prices. The weights of the index are derived from the distribution of export by commodity in 2018.

Index Formula

The 2018-based series is compiled using the Laspeyres formula where the price and weight reference periods are aligned to the year 2018. The geometric mean formula has been adopted in the computation of unweighted elementary aggregate price indices. The arithmetic mean formula is applied in compiling indices at higher levels of aggregation where weights of specific sub-indices are available.

Measurement of Changes in Price Indices

Change over previous month compares the index of the month with that of the preceding month. Such comparisons measure the change in the price index between two consecutive months. They serve as useful short-term indicators of the price movements.

Change over same period of previous year measures change in the index over a twelve-month period. Such comparisons compare the movement in the price index between similar months in two consecutive years.

Linking the Old 2012-Based Price Index Series to the New 2018-Based Price Index Series

The IPI and EPI have been rebased from base year 2012 to base year 2018. To facilitate comparison of the historical price indices across base years, the old 2012-based series are linked to the new 2018-based series by re-scaling them via a Linked Coefficient. The Linked Coefficient is the ratio of the annual 2018-based index in 2018 to the annual 2012-based index in 2018.

Example : Linking the old Iron & Steel Index series for IPI prior to 2018, to the 2018-based Iron & Steel Index (2018=100)

1) Calculate the linked coefficient

Year	Iron & Steel Index (2012=100)	Iron & Steel Index (2018=100)	Linked Coefficient
2018	93.4	100.0	$100.0 \div 93.4 = 1.071$

2) Re-scaling the old series to the 2018-based series using the Linked Coefficient

Year	Month	Iron & Steel Index (2012=100)	Iron & Steel Index (2018=100)
2016	Dec	84.0	$84.0 \times 1.071 = 90.0$
2017	Jan	85.6	$85.6 \times 1.071 = 91.7$

Linking Method for Maintaining the Old Index Reference Period

To continue the old 2012-based index series going forward in time, re-scale the new 2018-based index series to the old base year 2012 level, via a Linked Coefficient. The Linked Coefficient is the ratio of the annual 2012-based index in 2018 to the annual 2018-based index in 2018.

Example : Linking the new 2018-based Iron & Steel Index series for IPI to the 2012-based Iron & Steel Index (2012=100)

1) Calculate the linked coefficient

Year	Iron & Steel Index (2018=100)	Iron & Steel Index (2012=100)	Linked Coefficient
2018	100.0	93.4	$93.4 \div 100.0 = 0.934$

2) Re-scaling the new series to the 2012-based series using the Linked Coefficient

Year	Month	Iron & Steel Index (2018=100)	Iron & Steel Index (2012=100)
2019	Jan	98.6	$98.6 \times 0.934 = 92.1$
2019	Feb	102.4	$102.4 \times 0.934 = 95.6$

Index Revision

The indices may be revised when late returns and amendments received from respondents are incorporated.

Dissemination of Data

The Import and Export Price Indices are available on the SingStat Website (www.singstat.gov.sg/tablebuilder). Excel tables for this month's report are available at <https://www.singstat.gov.sg/publications/economy/import-export-price-indices> or through the QR code below:



Import Price Index (2018 = 100) September 2021

Chart 1: Index

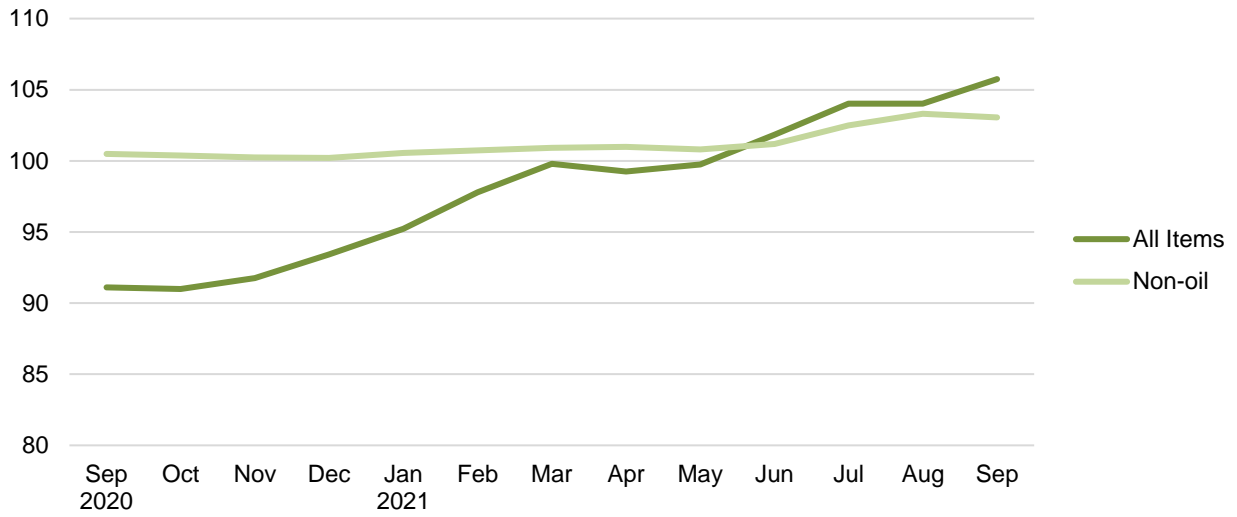


Chart 2: Month-on-Month Change

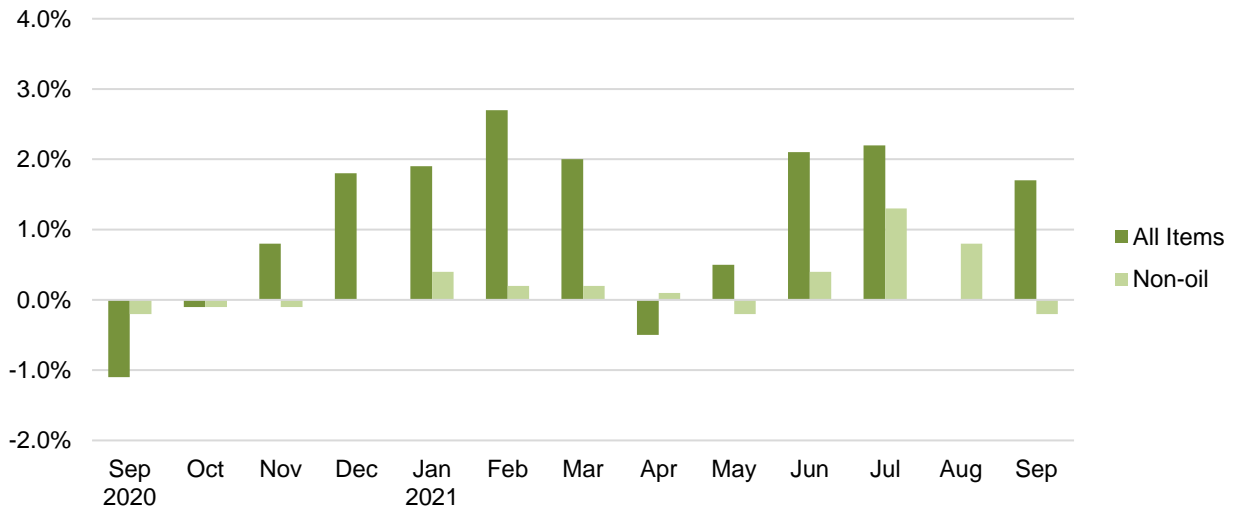
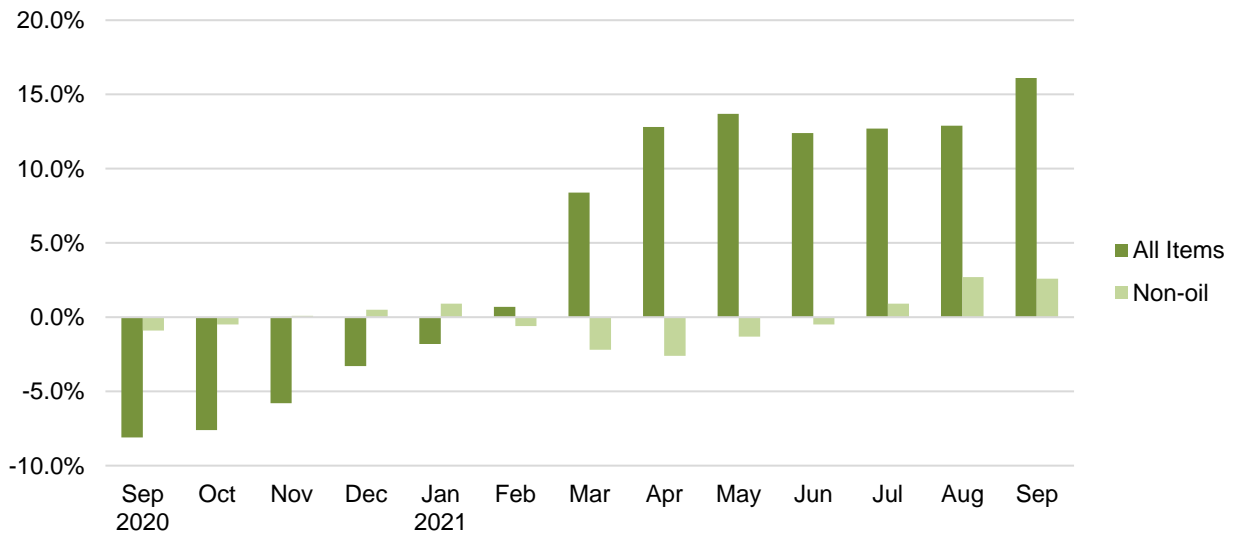


Chart 3: Year-on-Year Change



Export Price Index (2018 = 100) September 2021

Chart 4: Index

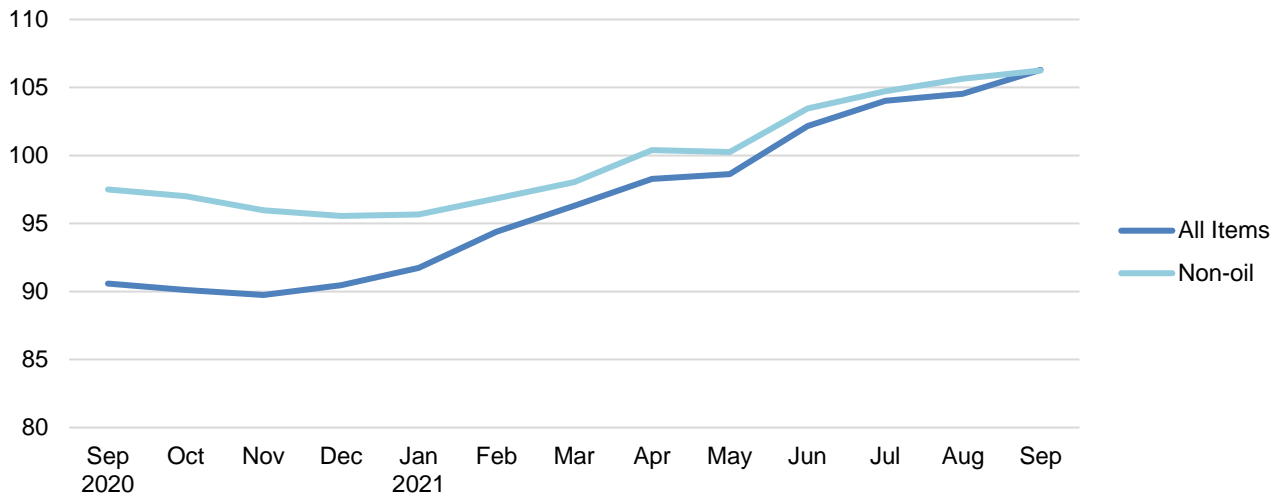


Chart 5: Month-on-Month Change

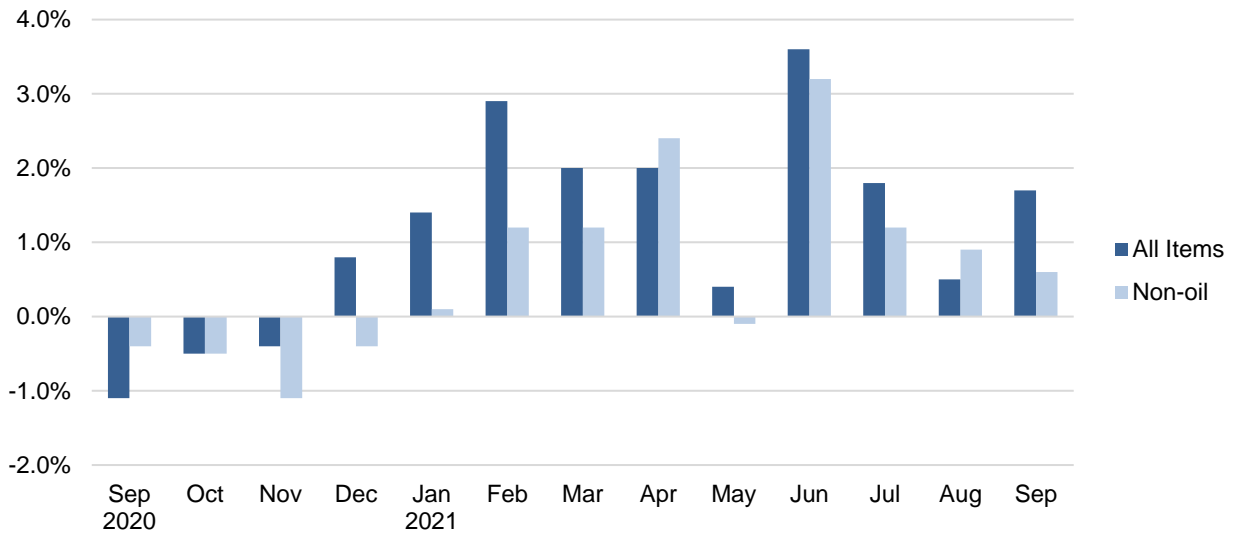


Chart 6: Year-on-Year Change

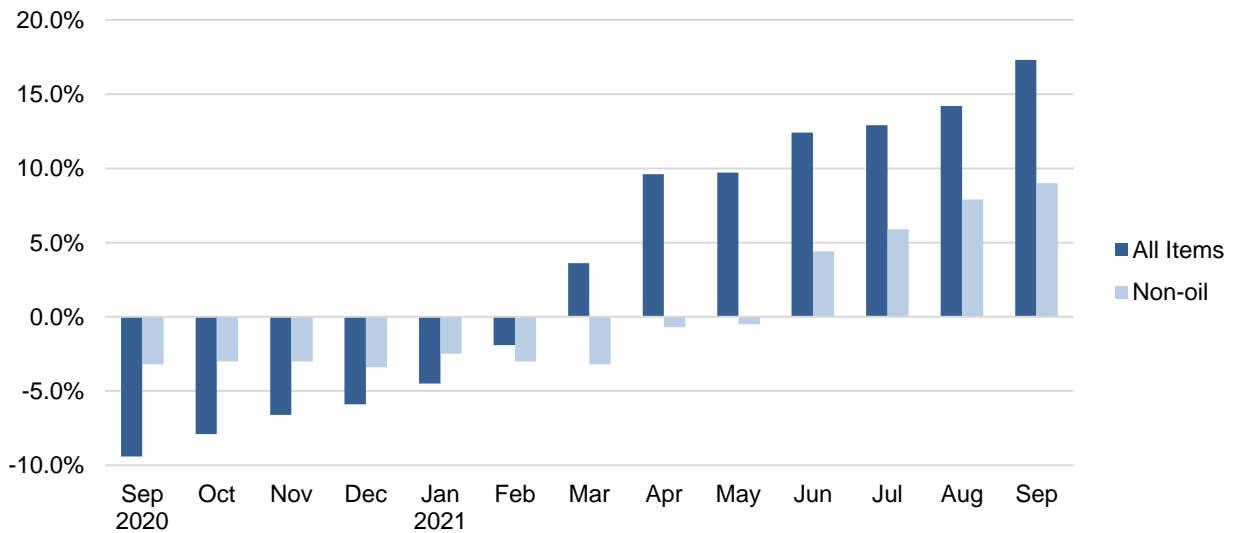


Table 1 Import Price Index

September 2021

Commodity section / division	Weights	Index (2018=100)			% Change		
					Aug 2021	Sep 2021	Sep 2021
		Jul 2021	Aug 2021	Sep 2021	Jul 2021	Aug 2021	Sep 2020
All Items	10,000	104.0	104.0	105.7	-	1.7	16.1
Non-oil Items	7,410	102.5	103.3	103.1	0.8	-0.2	2.6
Food & Live Animals	247	105.6	106.1	105.7	0.4	-0.3	3.4
Live animals	9	100.8	101.5	105.0	0.8	3.4	4.6
Meat & meat preparations	31	110.1	110.5	110.8	0.3	0.3	4.2
Dairy products & birds' eggs	30	116.5	116.8	116.0	0.3	-0.6	10.0
Fish seafood & preparations	34	96.6	96.4	96.5	-0.2	0.1	2.8
Cereals & cereal preparations	24	98.3	98.2	97.9	-0.1	-0.3	-2.5
Vegetables & fruit	48	108.7	108.9	106.3	0.1	-2.4	-0.6
Sugar, sugar preparations & honey	9	116.3	116.6	115.6	0.3	-0.9	14.0
Coffee, tea, cocoa, spices & manufactures	28	100.9	102.9	105.1	2.0	2.1	9.4
Animal feeding stuff (excl unmilled cereals)	4	103.7	103.5	102.8	-0.1	-0.7	2.5
Miscellaneous food preparations	31	104.2	104.9	104.0	0.7	-0.8	-1.0
Beverages & Tobacco	112	107.6	107.4	107.0	-0.1	-0.4	13.0
Beverages	84	108.6	108.5	108.0	-0.2	-0.4	14.4
Tobacco & manufactures	28	104.2	104.2	104.1	-	-0.1	8.9
Crude Materials (excl fuels)	84	105.6	107.0	106.4	1.3	-0.6	5.1
Oil seeds & oleaginous fruits	2	120.7	120.7	120.5	-	-0.2	6.4
Crude rubber	19	93.4	93.4	93.1	0.1	-0.4	-14.2
Cork & wood	3	98.7	98.7	111.4	-	12.9	19.7
Crude fertilizers & minerals	30	103.4	103.5	103.5	-	0.1	2.1
Metalliferous ores & metal scrap	17	130.3	135.5	130.5	4.0	-3.7	33.1
Crude animal & vegetable materials nes	13	95.0	96.7	96.7	1.8	-	1.7
Mineral Fuels, Lubricants & Related Materials	2,590	108.4	106.1	113.4	-2.2	7.0	76.4
Petroleum & products & related materials	2,431	109.6	107.0	114.8	-2.4	7.3	77.5
Gas	159	90.4	92.2	92.3	1.9	0.2	56.8
Animal & Vegetable Oils, Fats & Waxes	27	152.1	154.3	155.6	1.5	0.8	49.5
Fixed vegetable fats & oils	27	152.1	154.3	155.6	1.5	0.8	49.5
Chemicals & Chemical Products	888	104.8	105.5	105.5	0.7	-0.1	8.4
Organic chemicals	216	102.7	103.2	102.5	0.5	-0.7	14.7
Inorganic chemicals	35	104.0	106.9	102.9	2.8	-3.7	-3.9
Dyeing, tanning & colouring materials	33	106.7	107.9	107.5	1.2	-0.4	1.8
Medicinal & pharmaceutical products	101	105.2	105.1	104.3	-0.1	-0.8	0.6
Essential oils & perfume; toilet cleaning products	147	111.7	111.6	111.5	-0.1	-0.1	4.7
Plastics in primary forms	164	104.6	106.0	108.3	1.4	2.1	24.4
Plastics in non-primary forms	38	104.6	104.9	104.9	0.2	-	2.0
Chemical materials & products nes	154	101.0	102.2	102.0	1.2	-0.2	1.1
Manufactured Goods	505	112.1	112.6	113.5	0.4	0.9	14.4
Rubber manufactures nes	25	98.2	98.6	98.6	0.5	-	-1.6
Paper manufactures	51	96.6	96.8	96.6	0.2	-0.2	7.4
Textile manufactures	26	101.0	100.4	100.6	-0.5	0.2	0.4
Non-metal mineral manufactures nes	60	106.8	106.0	107.3	-0.7	1.2	4.6
Iron & steel	131	121.6	123.9	126.5	1.9	2.1	32.1
Non-ferrous metals	84	134.1	134.5	135.3	0.3	0.6	27.8
Manufactures of metals nes	128	101.6	101.0	101.1	-0.6	0.1	1.0
Machinery & Transport Equipment	4,690	99.6	100.6	100.2	1.0	-0.4	-
Power-generating machinery & equipment	526	114.2	114.4	113.6	0.2	-0.8	2.2
Machinery specialized for particular industries	306	100.3	100.4	99.8	0.1	-0.6	-1.3
Metal working machinery	23	103.8	104.3	104.1	0.5	-0.2	1.3
General industrial machinery	281	101.3	101.6	101.1	0.4	-0.5	-1.3
Office machines & data-processing machines	457	94.6	96.1	94.8	1.6	-1.3	-1.9
Telecommunication apparatus	390	91.6	91.7	91.4	0.1	-0.3	5.0
Electrical machinery apparatus nes, electrical parts	2,542	98.4	99.9	99.7	1.5	-0.2	-0.4
Road vehicles	164	98.8	97.9	98.3	-0.9	0.3	-1.3
Miscellaneous Manufactured Articles	857	106.9	107.2	106.8	0.3	-0.3	0.5
Prefab building, sanitary plumbing, lighting nes	12	105.7	105.7	105.7	-	-	2.4
Furniture, bedding, mattresses, cushions & others	26	108.6	108.8	108.6	0.2	-0.2	2.5
Travel goods, handbags & similar containers	54	106.4	106.4	106.4	-	-	3.3
Articles of apparel & clothing accessories	79	102.2	102.3	102.2	0.1	-	0.9
Footwear	24	104.9	104.9	104.8	-	-	1.8
Professional scientific & controlling instruments	275	102.6	102.9	102.2	0.3	-0.6	-1.6
Photographic & optical goods nes; watches & clocks	106	108.3	107.7	107.7	-0.5	-0.1	2.6
Miscellaneous manufactured articles nes	283	112.1	112.9	112.4	0.7	-0.4	0.7

Figures may not sum to total due to rounding.

Table 2 Export Price Index

September 2021

Commodity section / division	Weights	Index (2018=100)			% Change		
					Aug 2021	Sep 2021	Sep 2021
		Jul 2021	Aug 2021	Sep 2021	Jul 2021	Aug 2021	Sep 2020
All Items	10,000	104.0	104.5	106.3	0.5	1.7	17.3
Non-oil Items	8,022	104.7	105.6	106.2	0.9	0.6	9.0
Food & Live Animals	236	95.1	93.5	95.9	-1.7	2.6	-1.1
Dairy products & birds' eggs	5	44.0	44.2	44.1	0.3	-0.1	-56.3
Fish seafood & preparations	9	88.4	91.1	88.6	3.1	-2.7	1.4
Cereals & cereal preparations	7	96.2	97.3	97.2	1.1	-	0.7
Vegetables & fruit	8	95.9	96.2	98.0	0.2	1.9	9.2
Sugar, sugar preparations & honey	3	108.9	109.5	113.9	0.5	4.0	12.0
Coffee, tea, cocoa, spices & manufactures	26	110.0	111.3	110.3	1.2	-0.9	6.6
Animal feeding stuff (excl unmilled cereals)	7	112.9	113.0	110.6	0.1	-2.1	-1.5
Miscellaneous food preparations	171	93.6	90.9	94.5	-2.9	4.0	-1.5
Beverages & Tobacco	103	106.1	107.2	105.7	1.1	-1.4	4.5
Beverages	75	107.6	109.1	107.3	1.4	-1.7	6.9
Tobacco & manufactures	28	102.2	102.2	101.6	0.1	-0.6	-1.5
Crude Materials (excl fuels)	91	102.8	103.1	102.7	0.3	-0.3	29.7
Crude rubber	35	91.7	92.1	84.5	0.4	-8.2	16.6
Pulp and waste paper	26	102.3	103.2	106.8	0.9	3.5	36.7
Metalliferous ores & metal scrap	26	120.0	119.1	123.8	-0.8	3.9	42.3
Crude animal & vegetable materials nes	4	92.6	95.4	99.9	2.9	4.7	5.4
Mineral Fuels, Lubricants & Related Materials	1,978	101.1	100.1	106.5	-1.0	6.4	70.3
Petroleum & products & related materials	1,978	101.1	100.1	106.5	-1.0	6.4	70.3
Animal & Vegetable Oils, Fats & Waxes	5	120.5	120.6	124.6	0.1	3.4	26.7
Fixed vegetable fats & oils	5	120.5	120.6	124.6	0.1	3.4	26.7
Chemicals & Chemical Products	1,525	102.0	101.6	101.9	-0.3	0.3	13.7
Organic chemicals	428	106.0	105.1	106.3	-0.8	1.1	32.4
Inorganic chemicals	14	130.4	130.3	128.0	-	-1.7	15.7
Dyeing, tanning & colouring materials	37	100.7	100.1	99.4	-0.6	-0.7	3.8
Medicinal & pharmaceutical products	250	97.8	97.8	97.6	-	-0.2	-0.1
Essential oils & perfume; toilet cleaning products	232	100.5	100.6	101.2	0.1	0.7	3.1
Plastics in primary forms	355	100.2	99.6	99.6	-0.6	-	21.2
Plastics in non-primary forms	29	114.6	114.4	114.1	-0.2	-0.2	5.7
Chemical materials & products nes	181	99.8	100.2	99.7	0.4	-0.5	1.4
Manufactured Goods	318	112.5	113.0	113.1	0.4	0.1	15.1
Rubber manufactures nes	22	99.8	98.2	97.8	-1.6	-0.4	-0.9
Paper manufactures	41	99.7	99.6	100.5	-0.1	0.9	4.4
Textile manufactures	19	99.1	99.3	98.8	0.2	-0.5	-2.8
Non-metal mineral manufactures nes	14	98.4	98.5	98.0	0.1	-0.5	-1.4
Iron & steel	66	118.0	119.1	119.3	0.9	0.2	25.0
Non-ferrous metals	67	141.7	143.4	144.3	1.1	0.7	45.4
Manufactures of metals nes	89	100.7	100.7	100.1	-	-0.5	0.5
Machinery & Transport Equipment	4,836	106.4	108.0	109.1	1.5	1.0	10.1
Power-generating machinery & equipment	418	100.9	100.4	99.8	-0.5	-0.6	-0.7
Machinery specialized for particular industries	437	102.6	102.7	102.4	0.1	-0.2	5.8
Metal working machinery	25	99.3	98.6	98.7	-0.7	0.1	-1.3
General industrial machinery	212	103.5	103.8	103.4	0.3	-0.4	1.4
Office machines & data-processing machines	467	101.9	101.2	101.7	-0.6	0.5	1.4
Telecommunication apparatus	366	93.0	93.9	93.4	1.0	-0.6	5.8
Electrical machinery apparatus nes, electrical parts	2,814	110.6	113.3	115.2	2.4	1.8	15.3
Road vehicles	98	108.9	109.3	109.3	0.4	-	3.8
Miscellaneous Manufactured Articles	908	99.9	100.3	99.0	0.4	-1.3	-4.5
Prefab building, sanitary plumbing, lighting nes	3	117.7	117.3	117.0	-0.4	-0.3	9.3
Furniture, bedding, mattresses, cushions & others	5	102.0	102.0	101.6	-	-0.4	-0.5
Travel goods, handbags & similar containers	37	98.8	98.4	97.5	-0.4	-0.9	1.2
Articles of apparel & clothing accessories	40	112.4	114.1	112.0	1.5	-1.8	-1.4
Footwear	14	94.8	94.9	94.3	0.1	-0.6	0.1
Professional scientific & controlling instruments	365	90.2	90.3	89.8	0.2	-0.5	-2.4
Photographic & optical goods nes; watches & clocks	98	104.3	104.9	104.9	0.6	-	2.1
Miscellaneous manufactured articles nes	345	107.7	108.3	105.7	0.6	-2.4	-9.2

Figures may not sum to total due to rounding.

Table 3 Import Price Index

Section	All Items	Non-oil Items	Food & Live Animals	Beverages & Tobacco	Crude Materials	Mineral Fuels	Animal & Vegetable Oils, Fats & Waxes	Chemicals & Chemical Products	Manufactured Goods	Machinery & Transport Equipment	Misc. Manufactured Articles
Weights	10,000	7,410	247	112	84	2,590	27	888	505	4,690	857
Index (2018=100)											
2017	95.3	101.0	101.2	100.2	100.5	79.7	114.7	96.7	96.4	102.2	101.6
2018	100.0	100.0	100.0	100.0	100.0	100.0	100.0	100.0	100.0	100.0	100.0
2019	99.0	100.9	101.5	100.4	101.2	93.4	90.4	98.6	99.9	101.3	102.0
2020	92.0	101.3	102.9	97.9	101.8	65.6	103.1	97.4	99.8	101.3	106.0
2020											
Sep	91.1	100.5	102.3	94.7	101.2	64.3	104.1	97.3	99.2	100.2	106.3
Oct	91.0	100.4	101.4	95.1	101.8	64.1	108.4	97.3	99.4	100.1	105.8
Nov	91.8	100.2	101.8	95.0	101.5	67.5	113.3	97.4	100.2	99.8	105.4
Dec	93.4	100.2	102.2	96.2	101.5	74.0	120.0	97.6	100.8	99.7	104.8
2021											
Jan	95.2	100.6	103.5	107.2	100.6	80.0	124.7	98.3	101.6	99.5	105.4
Feb	97.8	100.7	104.5	107.0	99.3	89.4	129.8	99.4	103.3	99.3	105.9
Mar	99.8	100.9	103.5	107.1	102.0	96.5	138.2	101.0	104.9	99.2	105.2
Apr	99.3	101.0	103.4	106.9	102.7	94.3	143.3	102.0	105.9	98.9	105.5
May	99.8	100.8	103.9	107.4	103.0	96.8	151.3	102.8	107.4	98.2	105.7
Jun	101.8	101.2	105.0	107.2	105.4	103.7	148.4	102.8	109.6	98.4	106.1
Jul	104.0	102.5	105.6	107.6	105.6	108.4	152.1	104.8	112.1	99.6	106.9
Aug	104.0	103.3	106.1	107.4	107.0	106.1	154.3	105.5	112.6	100.6	107.2
Sep	105.7	103.1	105.7	107.0	106.4	113.4	155.6	105.5	113.5	100.2	106.8
Percentage Change over same period of previous year (%)											
2018	4.9	-1.0	-1.2	-0.2	-0.5	25.5	-12.8	3.4	3.7	-2.1	-1.6
2019	-1.0	0.9	1.5	0.4	1.2	-6.6	-9.6	-1.4	-0.1	1.3	2.0
2020	-7.0	0.3	1.4	-2.5	0.6	-29.8	14.0	-1.2	-0.2	-	3.8
2020											
Sep	-8.1	-0.9	-0.4	-5.7	-	-30.6	16.8	-1.6	-1.3	-1.3	2.4
Oct	-7.6	-0.5	-1.0	-5.0	1.0	-29.8	21.2	-0.9	-0.6	-1.0	2.4
Nov	-5.8	0.1	0.2	-4.7	0.8	-24.6	21.0	0.1	0.7	-0.4	2.9
Dec	-3.3	0.5	0.1	-3.3	0.4	-15.7	21.3	1.2	1.3	-0.1	2.6
2021											
Jan	-1.8	0.9	0.5	5.8	-1.0	-10.6	21.2	2.1	3.6	-0.2	3.0
Feb	0.7	-0.6	1.3	4.6	-3.3	5.0	27.7	1.2	3.4	-2.1	1.6
Mar	8.4	-2.2	0.2	3.0	-1.5	60.2	39.7	2.1	4.4	-4.2	-1.5
Apr	12.8	-2.6	-1.1	2.7	0.7	118.5	48.1	4.5	5.4	-5.2	-2.3
May	13.7	-1.3	-0.5	10.6	1.1	107.9	60.6	6.4	7.2	-4.1	-2.0
Jun	12.4	-0.5	2.0	10.5	3.9	76.3	53.6	6.5	10.1	-3.6	-0.6
Jul	12.7	0.9	2.2	14.5	3.6	64.4	55.1	6.9	12.4	-1.9	0.2
Aug	12.9	2.7	3.2	14.5	6.5	56.2	51.5	8.0	13.5	0.2	0.7
Sep	16.1	2.6	3.4	13.0	5.1	76.4	49.5	8.4	14.4	-	0.5

Table 4 Export Price Index

Section	All Items	Non-oil Items	Food & Live Animals	Beverages & Tobacco	Crude Materials	Mineral Fuels	Animal & Vegetable Oils, Fats & Waxes	Chemicals & Chemical Products	Manufactured Goods	Machinery & Transport Equipment	Misc. Manufactured Articles
Weights	10,000	8,022	236	103	91	1,978	5	1,525	318	4,836	908
Index (2018=100)											
2017	96.9	100.9	100.0	101.7	101.1	81.4	102.8	97.7	98.2	102.0	101.5
2018	100.0	100.0	100.0	100.0	100.0	100.0	100.0	100.0	100.0	100.0	100.0
2019	98.6	100.1	97.6	102.6	90.6	92.4	97.1	94.8	98.7	101.8	101.9
2020	91.7	98.6	94.7	103.4	81.0	63.7	101.9	91.1	97.9	100.6	103.2
2020											
Sep	90.6	97.5	97.0	101.2	79.2	62.6	98.4	89.6	98.3	99.1	103.7
Oct	90.1	97.0	93.3	100.5	79.2	62.1	97.5	90.6	98.3	98.5	101.7
Nov	89.7	96.0	94.0	100.8	79.3	64.5	97.6	91.4	99.1	96.7	100.6
Dec	90.5	95.6	92.1	101.2	81.3	69.9	101.6	92.0	100.8	95.9	99.7
2021											
Jan	91.7	95.7	92.9	102.7	85.4	75.8	106.5	93.0	101.9	95.5	99.6
Feb	94.4	96.8	93.5	105.8	89.3	84.5	109.1	94.6	104.1	96.8	99.0
Mar	96.3	98.0	94.8	102.9	91.1	89.3	112.4	97.8	105.7	97.5	99.3
Apr	98.3	100.4	96.1	105.3	94.2	89.6	116.0	99.4	107.4	100.7	98.9
May	98.6	100.3	95.9	104.6	97.2	92.0	117.8	100.0	111.1	100.0	99.3
Jun	102.2	103.5	94.6	104.5	96.5	96.9	117.9	100.3	110.6	105.3	99.5
Jul	104.0	104.7	95.1	106.1	102.8	101.1	120.5	102.0	112.5	106.4	99.9
Aug	104.5	105.6	93.5	107.2	103.1	100.1	120.6	101.6	113.0	108.0	100.3
Sep	106.3	106.2	95.9	105.7	102.7	106.5	124.6	101.9	113.1	109.1	99.0
Percentage Change over same period of previous year (%)											
2018	3.2	-0.9	-	-1.7	-1.1	22.9	-2.7	2.3	1.9	-1.9	-1.5
2019	-1.4	0.1	-2.4	2.6	-9.4	-7.6	-2.9	-5.2	-1.3	1.8	1.9
2020	-7.0	-1.5	-3.0	0.8	-10.6	-31.0	4.9	-4.0	-0.8	-1.2	1.3
2020											
Sep	-9.4	-3.2	-0.9	-1.9	-9.3	-35.5	0.8	-4.8	-1.3	-3.5	0.2
Oct	-7.9	-3.0	-4.1	-2.8	-7.3	-30.5	3.4	-2.9	-0.3	-3.4	-1.0
Nov	-6.6	-3.0	-3.1	-1.6	-3.6	-23.5	2.8	-1.5	1.2	-4.1	-0.9
Dec	-5.9	-3.4	-3.8	-1.6	-0.4	-18.1	3.8	0.2	3.3	-5.2	-1.6
2021											
Jan	-4.5	-2.5	-2.1	-0.8	3.4	-13.8	6.8	2.2	5.1	-4.7	-1.1
Feb	-1.9	-3.0	-4.1	0.3	8.6	4.0	3.5	1.8	6.8	-5.1	-3.6
Mar	3.6	-3.2	-1.3	-3.1	10.5	50.3	1.5	4.8	8.6	-6.0	-5.9
Apr	9.6	-0.7	3.3	-2.0	14.9	106.1	8.9	7.8	11.2	-3.1	-6.4
May	9.7	-0.5	1.4	-1.9	16.5	100.7	11.8	10.4	14.7	-3.7	-5.8
Jun	12.4	4.4	0.8	0.7	16.4	67.9	15.0	11.6	14.0	3.6	-4.4
Jul	12.9	5.9	-	3.9	29.9	57.1	21.6	13.9	14.8	4.9	-4.0
Aug	14.2	7.9	-1.2	5.1	32.7	52.2	22.5	13.5	15.1	8.2	-3.7
Sep	17.3	9.0	-1.1	4.5	29.7	70.3	26.7	13.7	15.1	10.1	-4.5

NOTATIONS

- nes not elsewhere specified
- nil or negligible

NOTES

The Import and Export Price Indices report contains statistics that are the most recent available at the time of its preparation.

Some statistics, particularly those for the most recent time periods, are provisional and may be subject to revision in later issues.