



# Import & Export Price Indices September 2023

[www.singstat.gov.sg](http://www.singstat.gov.sg)

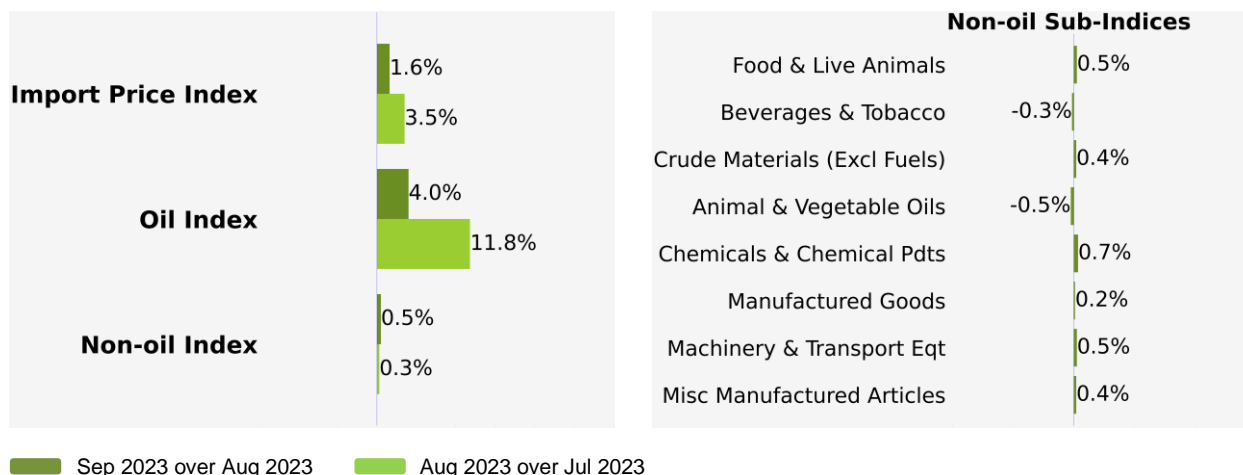
**IMPORT AND EXPORT PRICE INDICES, September 2023**  
**ISSN 2591-7463**

**© Department of Statistics, Ministry of Trade & Industry, Republic of Singapore**

Reproducing or quoting any part of this publication is permitted, provided this publication is accredited as the source. Please refer to the SingStat Website Terms of Use (<http://www.singstat.gov.sg/terms-of-use>) for more details on the conditions of use of this publication.

# Import Price Index (2018 = 100) September 2023

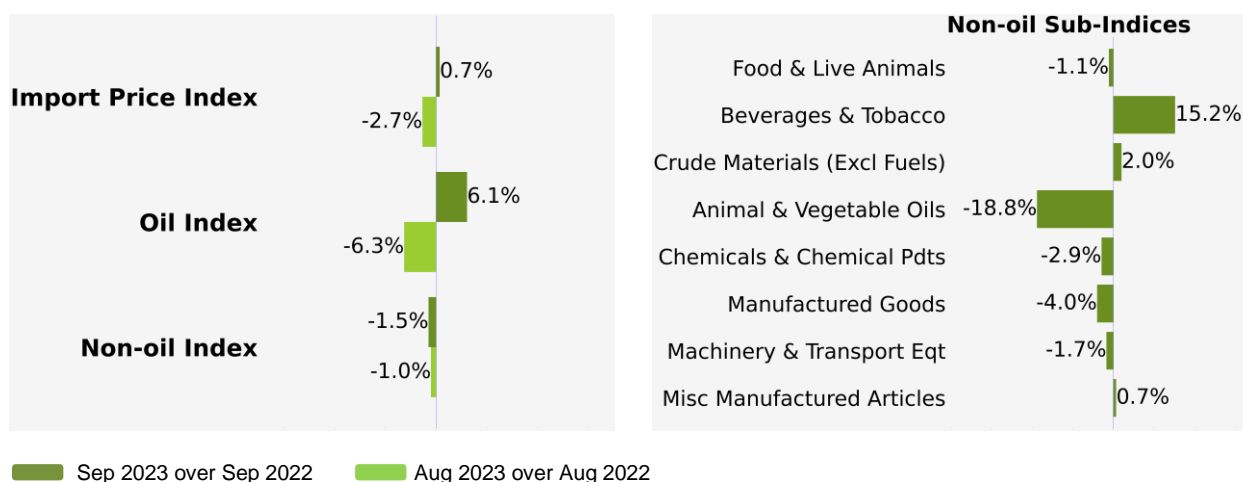
## Month-on-Month Change



The Import Price Index rose 1.6% in September 2023, following the 3.5% increase in August 2023. The Oil index gained 4.0%, following the 11.8% increase in the previous month. The Non-oil index gained 0.5% in September 2023, extending the 0.3% increase in August 2023.

Among the Non-oil sub-indices, the increases were led by the Chemicals & Chemical Products (0.7%) and Machinery & Transport Equipment (0.5%) indices. The increases were partially offset by decreases in the Animal & Vegetable Oils (-0.5%) and Beverages & Tobacco (-0.3%) indices.

## Year-on-Year Change

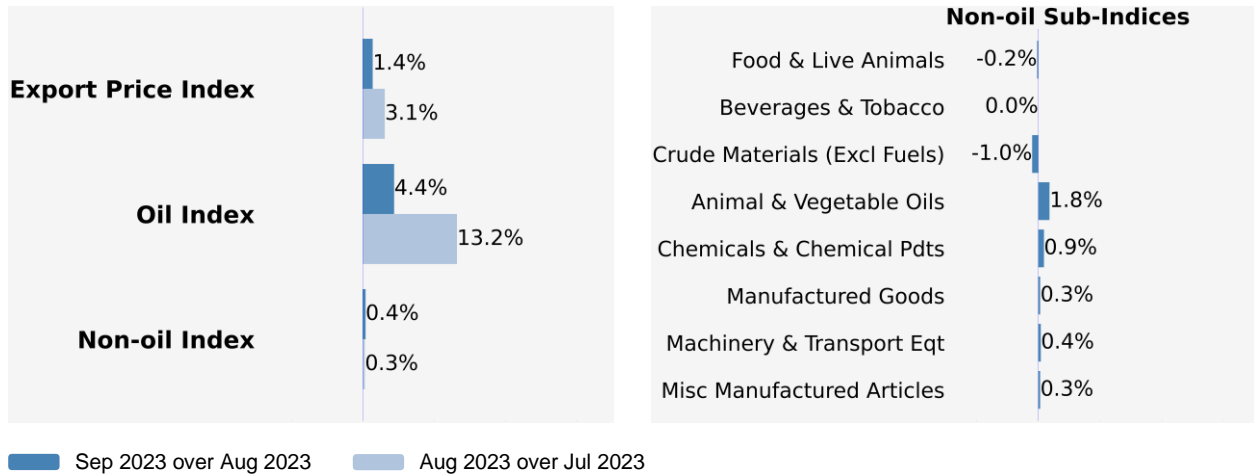


The Import Price Index rose 0.7% in September 2023 from a year ago, in contrast to the 2.7% decrease in August 2023. The Oil index rose 6.1% while the Non-oil index fell 1.5%.

For the Non-oil sub-indices, lower prices of Animal & Vegetable Oils (-18.8%), Manufactured Goods (-4.0%), Chemicals & Chemical Products (-2.9%), Machinery & Transport Equipment (-1.7%) and Food & Live Animals (-1.1%) were partially offset by higher prices of Beverages & Tobacco (15.2%), Crude Materials (2.0%) and Miscellaneous Manufactured Articles (0.7%).

## Export Price Index (2018 = 100) September 2023

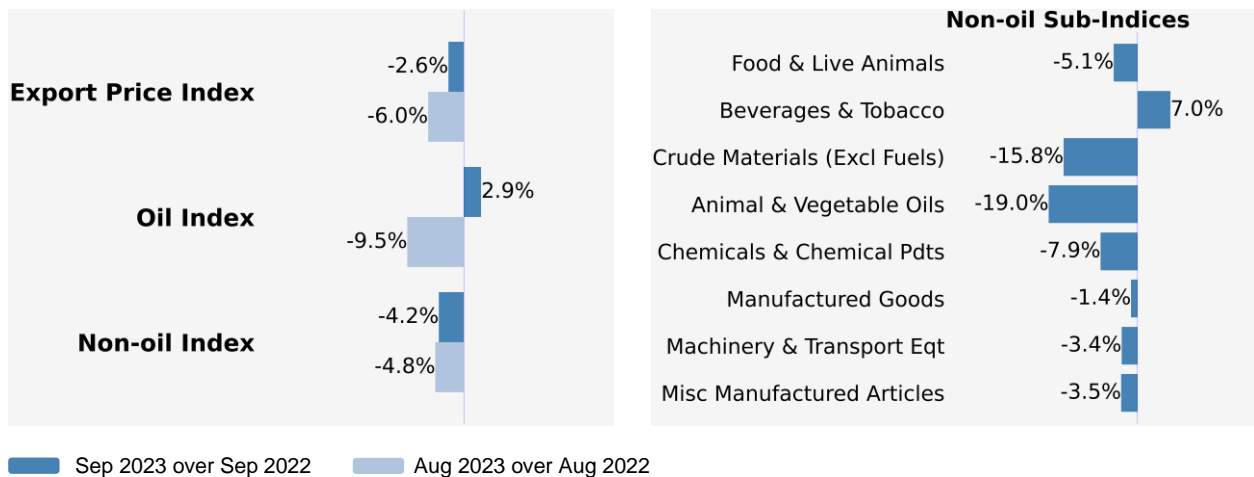
### Month-on-Month Change



The Export Price Index rose 1.4% in September 2023, extending the 3.1% increase in August 2023. The Oil index climbed 4.4%, following the 13.2% increase in the previous month. The Non-oil index rose 0.4% in September 2023, continuing the 0.3% increase in August 2023.

Among the Non-oil sub-indices, the increases were led by the Chemicals & Chemical Products (0.9%) and Machinery & Transport Equipment (0.4%) indices. The increases were partially offset by decreases in the Crude Materials (-1.0%) index, mainly due to lower prices of pulp and waste paper, and the Food & Live Animals (-0.2%) index.

### Year-on-Year Change



The Export Price Index fell 2.6% in September 2023 from a year ago, following the 6.0% decrease in August 2023. The Oil index rose 2.9% while the Non-oil index declined 4.2%.

For the Non-oil sub-indices, lower prices of Animal & Vegetable Oils (-19.0%), Crude Materials (-15.8%), Chemicals & Chemical Products (-7.9%), Food & Live Animals (-5.1%), Miscellaneous Manufactured Articles (-3.5%), Machinery & Transport Equipment (-3.4%) and Manufactured Goods (-1.4%) were partially offset by higher prices of Beverages & Tobacco (7.0%).



## Technical Note

The **Import Price Index (IPI)** is used primarily as an indicator to track the price trends of imported goods into Singapore. Prices of imports, valued at CIF terms (cost, insurance and freight) are obtained monthly from major importers. The weighting pattern of the index is derived from import statistics for 2018.

The **Export Price Index (EPI)** measures changes in the price of all exports of merchandise from Singapore, including re-exports. In general, prices are obtained from major exporters of the selected commodities. Prices used in the index computation, are the prices of goods that physically leave Singapore's main ports of export; also termed as Free on Board (FOB) prices. The weights of the index are derived from the distribution of export by commodity in 2018.

### Index Formula

The 2018-based series is compiled using the Laspeyres formula where the price and weight reference periods are aligned to the year 2018. The geometric mean formula has been adopted in the computation of unweighted elementary aggregate price indices. The arithmetic mean formula is applied in compiling indices at higher levels of aggregation where weights of specific sub-indices are available.

### Measurement of Changes in Price Indices

*Change over previous month* compares the index of the month with that of the preceding month. Such comparisons measure the change in the price index between two consecutive months. They serve as useful short-term indicators of the price movements.

*Change over same period of previous year* measures change in the index over a twelve-month period. Such comparisons compare the movement in the price index between similar months in two consecutive years.

### Linking the Old 2012-Based Price Index Series to the New 2018-Based Price Index Series

The IPI and EPI have been rebased from base year 2012 to base year 2018. To facilitate comparison of the historical price indices across base years, the old 2012-based series are linked to the new 2018-based series by re-scaling them via a Linked Coefficient. The Linked Coefficient is the ratio of the annual 2018-based index in 2018 to the annual 2012-based index in 2018.

Example: Linking the old Iron & Steel Index series for IPI prior to 2018, to the 2018-based Iron & Steel Index (2018=100)

#### 1) Calculate the linked coefficient

Year	Iron & Steel Index (2012=100)	Iron & Steel Index (2018=100)	Linked Coefficient
2018	93.4	100.0	$100.0 \div 93.4 = 1.071$

#### 2) Re-scaling the old series to the 2018-based series using the Linked Coefficient

Year	Month	Iron & Steel Index (2012=100)	Iron & Steel Index (2018=100)
2016	Dec	84.0	$84.0 \times 1.071 = 90.0$
2017	Jan	85.6	$85.6 \times 1.071 = 91.7$

### Linking Method for Maintaining the Old Index Reference Period

To continue the old 2012-based index series going forward in time, re-scale the new 2018-based index series to the old base year 2012 level, via a Linked Coefficient. The Linked Coefficient is the ratio of the annual 2012-based index in 2018 to the annual 2018-based index in 2018.

Example: Linking the new 2018-based Iron & Steel Index series for IPI to the 2012-based Iron & Steel Index (2012=100)

#### 1) Calculate the linked coefficient

Year	Iron & Steel Index (2018=100)	Iron & Steel Index (2012=100)	Linked Coefficient
2018	100.0	93.4	$93.4 \div 100.0 = 0.934$

#### 2) Re-scaling the new series to the 2012-based series using the Linked Coefficient

Year	Month	Iron & Steel Index (2018=100)	Iron & Steel Index (2012=100)
2019	Jan	98.6	$98.6 \times 0.934 = 92.1$
2019	Feb	102.4	$102.4 \times 0.934 = 95.6$

### Index Revision

The indices may be revised when late returns and amendments received from respondents are incorporated.

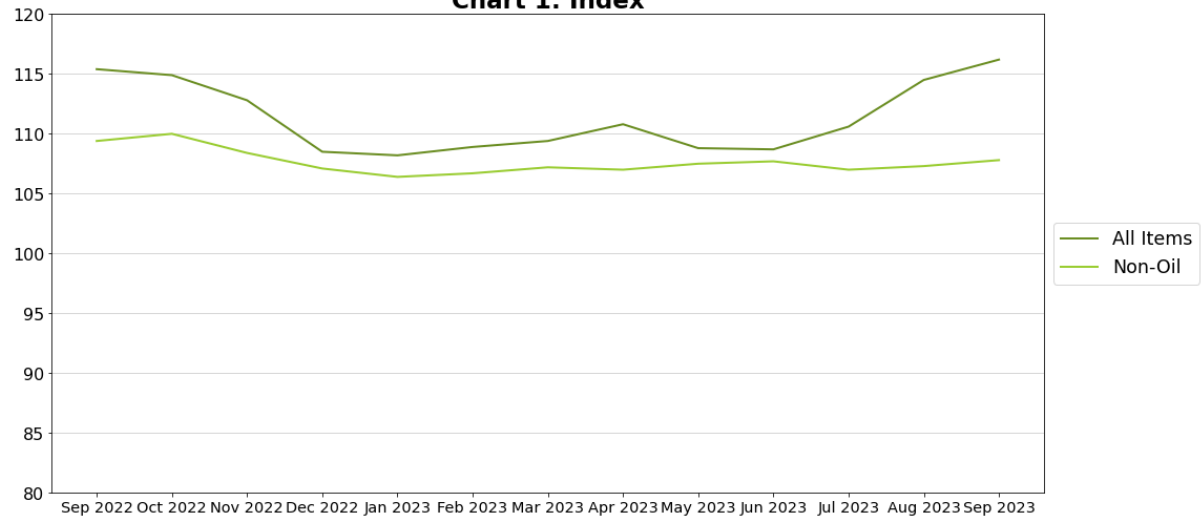
### Dissemination of Data

The Import and Export Price Indices are available on the SingStat Website ([www.singstat.gov.sg/tablebuilder](http://www.singstat.gov.sg/tablebuilder)). Excel tables for this month's report are available at <https://www.singstat.gov.sg/publications/economy/import-export-price-indices> or through the QR code below:

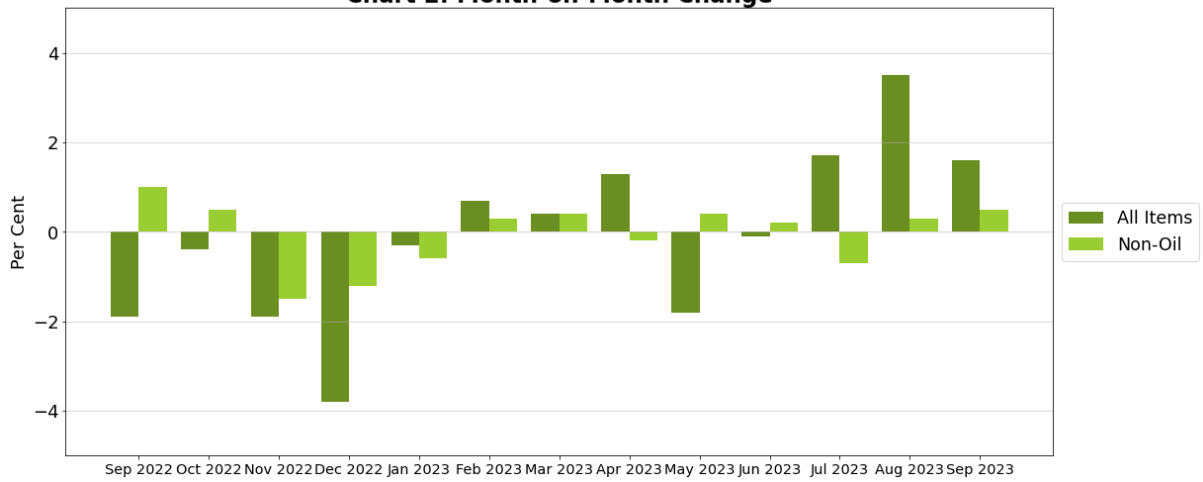


# Import Price Index (2018 = 100) September 2023

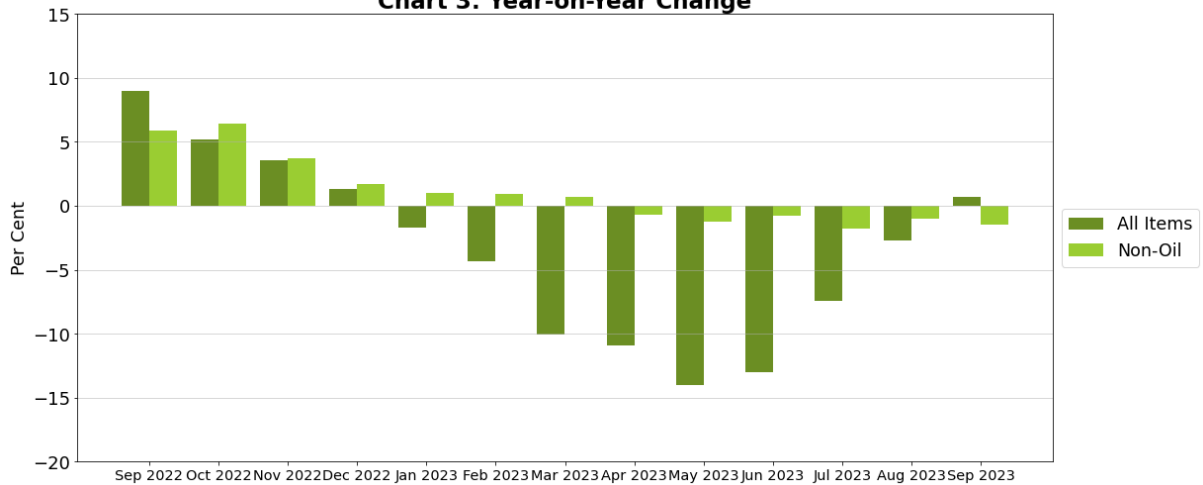
**Chart 1: Index**



**Chart 2: Month-on-Month Change**

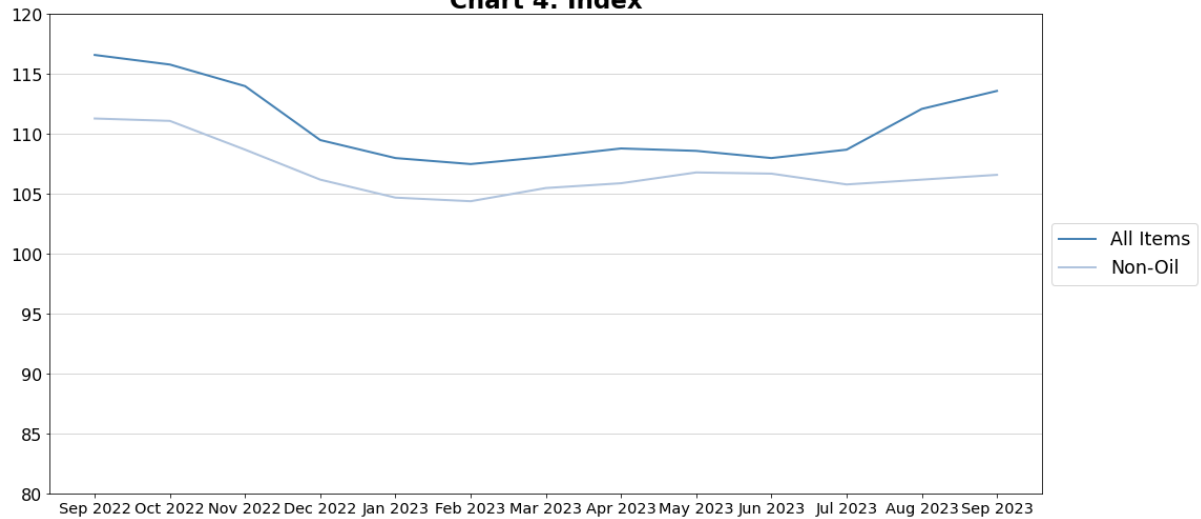


**Chart 3: Year-on-Year Change**

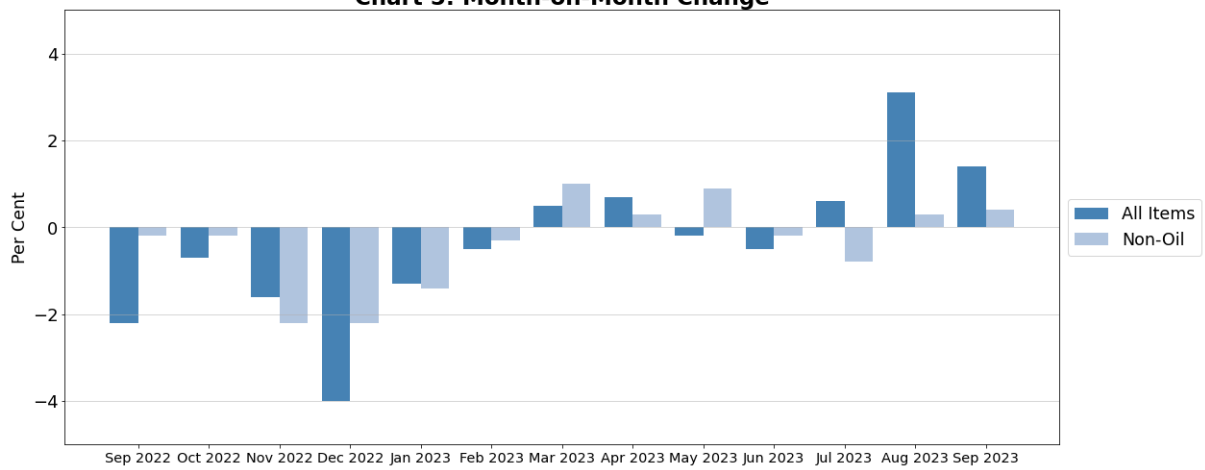


## Export Price Index (2018 = 100) September 2023

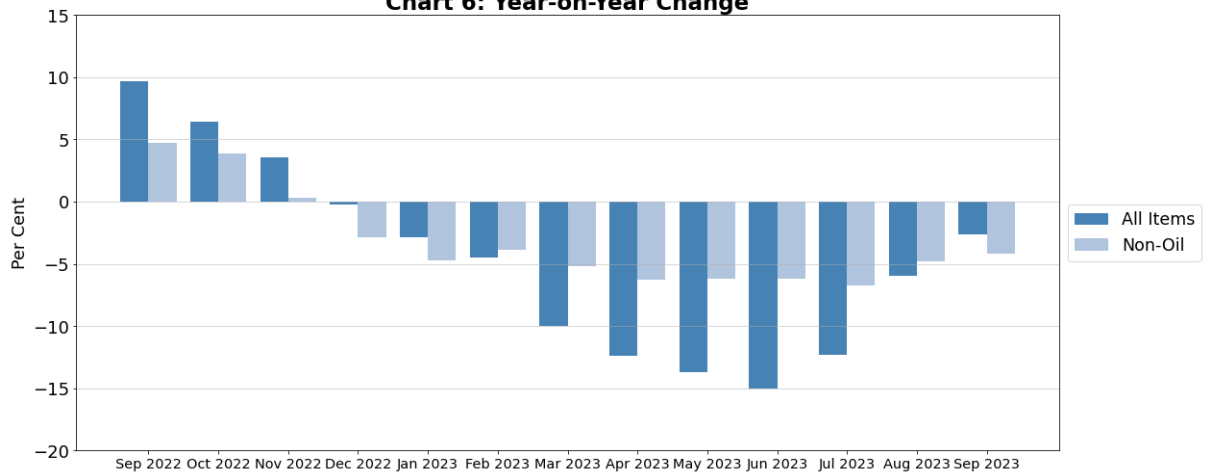
**Chart 4: Index**



**Chart 5: Month-on-Month Change**



**Chart 6: Year-on-Year Change**





**Table 1 Import Price Index  
September 2023**

Commodity section / division	Weights	Index (2018=100)			% Change		
		Jul 2023	Aug 2023	Sep 2023	Aug 2023 Jul 2023	Sep 2023 Aug 2023	Sep 2023 Sep 2022
<b>All Items</b>	<b>10,000</b>	<b>110.6</b>	<b>114.5</b>	<b>116.2</b>	<b>3.5</b>	<b>1.6</b>	<b>0.7</b>
<b>Non-oil Items</b>	<b>7,410</b>	<b>107.0</b>	<b>107.3</b>	<b>107.8</b>	<b>0.3</b>	<b>0.5</b>	<b>-1.5</b>
Food & Live Animals	247	115.0	115.5	116.1	0.4	0.5	-1.1
Live Animals	9	130.2	130.0	129.9	-0.1	-0.1	-7.6
Meat & meat preparations	31	110.6	111.6	110.6	0.9	-0.9	-10.8
Dairy products & birds' eggs	30	133.5	134.3	134.3	0.6	-	-3.7
Fish seafood & preparations	34	108.1	106.0	104.7	-1.9	-1.3	-4.5
Cereals & cereal preparations	24	107.7	108.0	108.6	0.2	0.6	0.8
Vegetables & fruit	48	114.9	115.0	115.6	0.1	0.5	-2.0
Sugar, sugar preparations & honey	9	143.1	146.0	147.4	2.0	1.0	12.0
Coffee, tea, cocoa, spices & manufactures	28	109.8	112.1	118.1	2.1	5.4	14.7
Animal feeding stuff (excl unmilled cereals)	4	113.4	113.9	112.2	0.4	-1.5	2.8
Miscellaneous food preparations	31	107.7	108.4	108.5	0.7	0.1	0.3
Beverages & Tobacco	112	125.5	125.7	125.3	0.2	-0.3	15.2
Beverages	84	119.0	119.1	118.4	-	-0.6	9.4
Tobacco & manufactures	28	145.2	146.0	146.3	0.5	0.3	32.2
Crude Materials (excl fuels)	84	113.8	114.1	114.6	0.3	0.4	2.0
Oil seeds & oleaginous fruits	2	137.3	137.9	137.9	0.5	-	-0.7
Crude rubber	19	100.6	101.8	102.8	1.2	1.0	5.2
Cork & wood	3	109.7	109.7	109.7	-	-	-11.8
Crude fertilizers & minerals	30	115.8	115.5	116.0	-0.3	0.5	4.2
Metalliferous ores & metal scrap	17	133.7	134.9	135.5	0.9	0.4	3.0
Crude animal & vegetable materials nes	13	99.7	99.3	98.7	-0.5	-0.6	-4.5
Mineral Fuels, Lubricants & Related Materials	2,590	120.9	135.1	140.5	11.8	4.0	6.1
Petroleum & products & related materials	2,431	123.0	137.4	142.6	11.7	3.8	6.5
Gas	159	89.7	100.7	109.5	12.3	8.8	-1.5
Animal & Vegetable Oils, Fats & Waxes	27	135.5	134.4	133.7	-0.8	-0.5	-18.8
Fixed vegetable fats & oils	27	135.5	134.4	133.7	-0.8	-0.5	-18.8
Chemicals & Chemical Products	888	106.4	106.7	107.5	0.3	0.7	-2.9
Organic chemicals	216	102.1	102.4	102.9	0.3	0.5	-7.8
Inorganic chemicals	35	109.0	108.4	108.5	-0.5	-	4.8
Dyeing, tanning & colouring materials	33	109.4	109.5	110.0	0.1	0.5	-1.8
Medicinal & pharmaceutical products	101	105.9	106.1	106.4	0.2	0.4	0.3
Essential oils & perfume; toilet cleaning products	147	116.8	116.9	117.6	0.1	0.6	3.0
Plastics in primary forms	164	99.7	100.2	100.7	0.4	0.6	-7.2
Plastics in non-primary forms	38	107.5	107.3	108.0	-0.2	0.6	-2.7
Chemical materials & products nes	154	108.5	109.4	111.1	0.9	1.5	-0.9
Manufactured Goods	505	112.5	112.7	112.9	0.2	0.2	-4.0
Rubber manufactures nes	25	103.9	104.4	102.7	0.5	-1.7	0.7
Paper manufactures	51	99.9	100.6	101.0	0.7	0.4	-6.5
Textile manufactures	26	103.1	104.0	104.4	0.8	0.4	-2.1
Non-metal mineral manufactures nes	60	116.9	117.9	116.7	0.8	-1.0	-4.5
Iron & steel	131	117.1	116.3	116.8	-0.8	0.5	-6.5
Non-ferrous metals	84	131.5	130.7	131.4	-0.6	0.5	-2.4
Manufactures of metals nes	128	101.8	103.0	103.5	1.2	0.4	-2.4
Machinery & Transport Equipment	4,690	104.9	105.1	105.7	0.3	0.5	-1.7
Power-generating machinery & equipment	526	119.9	121.0	121.9	0.9	0.7	-1.3
Machinery specialized for particular industries	306	99.2	100.4	101.4	1.2	1.0	-3.5
Metal working machinery	23	128.7	128.6	129.0	-0.1	0.3	16.7
General industrial machinery	281	104.7	105.0	104.8	0.2	-0.1	-1.1
Office machines & data-processing machines	457	98.6	97.9	96.1	-0.7	-1.9	-4.2
Telecommunication apparatus	390	84.4	85.1	85.8	0.7	0.9	-3.5
Electrical machinery apparatus nes, electrical parts	2,542	107.0	107.2	108.0	0.1	0.8	-1.3
Road vehicles	164	96.5	96.3	98.2	-0.2	2.0	-0.2
Miscellaneous Manufactured Articles	857	109.4	109.9	110.3	0.5	0.4	0.7
Prefab building, sanitary plumbing, lighting nes	12	107.9	107.9	107.9	-	-	0.4
Furniture, bedding, mattresses, cushions & others	26	121.3	121.2	121.2	-0.1	-	9.9
Travel goods, handbags & similar containers	54	137.6	140.0	140.2	1.8	0.1	16.1
Articles of apparel & clothing accessories	79	101.2	101.4	101.9	0.2	0.5	-3.8
Footwear	24	101.2	101.1	101.6	-0.1	0.5	-1.2
Professional scientific & controlling instruments	275	100.8	101.5	102.0	0.7	0.5	-1.2
Photographic & optical goods nes; watches & clocks	106	113.9	114.5	114.2	0.5	-0.2	1.9
Miscellaneous manufactured articles nes	283	112.6	112.8	113.4	0.2	0.5	-0.6

Figures may not sum to total due to rounding.

**Table 2 Export Price Index  
September 2023**

Commodity section / division	Weights	Index (2018=100)			% Change		
		Jul 2023	Aug 2023	Sep 2023	Aug 2023 Jul 2023	Sep 2023 Aug 2023	Sep 2023 Sep 2022
<b>All Items</b>	<b>10,000</b>	<b>108.7</b>	<b>112.1</b>	<b>113.6</b>	<b>3.1</b>	<b>1.4</b>	<b>-2.6</b>
<b>Non-oil Items</b>	<b>8,022</b>	<b>105.8</b>	<b>106.2</b>	<b>106.6</b>	<b>0.3</b>	<b>0.4</b>	<b>-4.2</b>
Food & Live Animals	236	94.7	93.6	93.4	-1.2	-0.2	-5.1
Dairy products & birds' eggs	5	50.2	49.8	52.7	-0.8	5.8	-3.5
Fish seafood & preparations	9	100.9	100.8	100.6	-0.1	-0.2	-4.2
Cereals & cereal preparations	7	107.9	108.4	108.0	0.5	-0.4	5.9
Vegetables & fruit	8	94.0	94.3	95.9	0.4	1.7	-5.9
Sugar, sugar preparations & honey	3	117.6	117.9	118.8	0.3	0.8	2.7
Coffee, tea, cocoa, spices & manufactures	26	113.9	116.1	118.8	2.0	2.3	-0.7
Animal feeding stuff (excl unmilled cereals)	7	91.5	93.5	94.1	2.1	0.7	-3.6
Miscellaneous food preparations	171	92.0	90.0	89.2	-2.1	-1.0	-6.7
Beverages & Tobacco	103	116.0	116.8	116.8	0.8	-	7.0
Beverages	75	117.8	118.5	118.0	0.6	-0.4	7.2
Tobacco & manufactures	28	111.2	112.5	113.7	1.2	1.0	6.6
Crude Materials (excl fuels)	91	95.0	95.5	94.5	0.5	-1.0	-15.8
Crude rubber	35	93.6	94.7	94.7	1.2	-0.1	-12.7
Pulp and waste paper	26	76.4	74.8	71.1	-2.1	-4.9	-38.7
Metalliferous ores & metal scrap	26	116.5	117.8	117.5	1.2	-0.3	0.3
Crude animal & vegetable materials nes	4	88.2	90.7	96.6	2.9	6.5	7.0
Mineral Fuels, Lubricants & Related Materials	1,978	120.2	136.0	142.0	13.2	4.4	2.9
Petroleum & products & related materials	1,978	120.2	136.0	142.0	13.2	4.4	2.9
Animal & Vegetable Oils, Fats & Waxes	5	123.8	123.9	126.1	0.1	1.8	-19.0
Fixed vegetable fats & oils	5	123.8	123.9	126.1	0.1	1.8	-19.0
Chemicals & Chemical Products	1,525	99.7	100.3	101.3	0.6	0.9	-7.9
Organic chemicals	428	97.1	98.9	101.7	1.9	2.8	-9.6
Inorganic chemicals	14	161.6	162.6	163.0	0.6	0.2	1.8
Dyeing, tanning & colouring materials	37	103.5	102.8	101.3	-0.7	-1.5	-13.1
Medicinal & pharmaceutical products	250	90.1	90.4	90.5	0.4	0.1	-4.7
Essential oils & perfume; toilet cleaning products	232	104.7	104.7	105.2	0.1	0.4	-3.4
Plastics in primary forms	355	96.6	96.0	96.4	-0.6	0.3	-12.0
Plastics in non-primary forms	29	127.5	126.8	126.9	-0.5	0.1	-3.0
Chemical materials & products nes	181	109.2	110.6	111.0	1.3	0.4	-6.4
Manufactured Goods	318	116.2	115.9	116.3	-0.3	0.3	-1.4
Rubber manufactures nes	22	109.2	109.6	106.9	0.3	-2.5	2.5
Paper manufactures	41	98.9	100.5	98.6	1.7	-1.9	-5.3
Textile manufactures	19	90.6	90.2	89.9	-0.5	-0.3	-2.7
Non-metal mineral manufactures nes	14	102.4	103.2	114.8	0.7	11.3	6.7
Iron & steel	66	146.3	145.6	145.3	-0.4	-0.2	-2.6
Non-ferrous metals	67	128.2	125.4	125.1	-2.2	-0.3	-2.7
Manufactures of metals nes	89	102.2	102.8	104.4	0.6	1.6	0.8
Machinery & Transport Equipment	4,836	109.0	109.3	109.7	0.3	0.4	-3.4
Power-generating machinery & equipment	418	103.7	104.7	105.8	1.0	1.0	0.6
Machinery specialized for particular industries	437	101.8	102.8	98.4	0.9	-4.2	-8.2
Metal working machinery	25	100.0	101.4	102.1	1.3	0.7	-1.6
General industrial machinery	212	107.6	108.3	109.4	0.7	1.1	4.5
Office machines & data-processing machines	467	102.0	100.0	102.8	-1.9	2.8	-0.4
Telecommunication apparatus	366	82.3	84.1	82.6	2.2	-1.7	-9.2
Electrical machinery apparatus nes, electrical parts	2,814	115.7	116.0	116.8	0.2	0.7	-3.8
Road vehicles	98	107.3	108.4	108.9	1.0	0.5	1.2
Miscellaneous Manufactured Articles	908	98.5	98.9	99.2	0.5	0.3	-3.5
Prefab building, sanitary plumbing, lighting nes	3	118.6	118.0	117.3	-0.5	-0.6	3.3
Furniture, bedding, mattresses, cushions & others	5	107.2	107.2	107.2	-	-	-0.8
Travel goods, handbags & similar containers	37	103.6	101.7	93.0	-1.8	-8.6	-11.0
Articles of apparel & clothing accessories	40	114.7	117.4	119.8	2.4	2.0	2.1
Footwear	14	116.1	117.5	118.6	1.2	1.0	-3.9
Professional scientific & controlling instruments	365	82.2	82.9	83.5	0.9	0.7	-9.1
Photographic & optical goods nes; watches & clocks	98	107.1	107.2	107.1	0.1	-0.1	0.8
Miscellaneous manufactured articles nes	345	109.7	110.0	110.7	0.3	0.6	0.3

Figures may not sum to total due to rounding.

**Table 3 Import Price Index**

Section	All Items	Non-oil Items	Food & Live Animals	Beverages & Tobacco	Crude Materials	Mineral Fuels	Animal & Vegetable Oils, Fats & Waxes	Chemicals & Chemical Products	Manufactured Goods	Machinery & Transport Equipment	Misc Manufactured Articles
Weights	10,000	7,410	247	112	84	2,590	27	888	505	4,690	857
Index (2018=100)											
2018	100.0	100.0	100.0	100.0	100.0	100.0	100.0	100.0	100.0	100.0	100.0
2019	99.0	100.9	101.5	100.4	101.2	93.4	90.4	98.6	99.9	101.3	102.0
2020	92.0	101.3	102.9	97.9	101.8	65.6	103.1	97.4	99.8	101.3	106.0
2021	102.7	102.3	105.4	106.4	104.7	104.0	149.6	103.6	109.9	99.9	106.4
2022	117.5	107.9	114.6	109.3	111.0	145.0	174.8	110.2	118.2	105.3	109.0
Sep 2022	115.4	109.4	117.4	108.8	112.3	132.5	164.6	110.6	117.6	107.5	109.5
Oct 2022	114.9	110.0	117.9	109.2	112.7	128.9	162.1	110.5	118.0	108.5	109.2
Nov 2022	112.8	108.4	116.6	108.8	114.3	125.2	158.3	109.3	116.4	106.7	107.7
Dec 2022	108.5	107.1	116.0	108.6	112.1	112.5	153.7	107.5	115.0	105.3	107.0
Jan 2023	108.2	106.4	115.5	116.5	111.0	113.3	149.3	105.8	114.0	104.5	107.4
Feb 2023	108.9	106.7	114.8	116.5	112.7	115.0	147.0	106.3	113.8	104.9	108.0
Mar 2023	109.4	107.2	114.7	117.1	113.0	115.6	147.7	106.8	113.7	105.2	109.5
Apr 2023	110.8	107.0	114.1	117.8	112.3	121.8	146.0	107.0	113.7	104.7	110.4
May 2023	108.8	107.5	114.2	122.8	114.6	112.7	140.8	107.0	113.8	105.2	110.8
Jun 2023	108.7	107.7	115.2	125.1	114.4	111.6	134.4	106.9	113.7	105.7	110.2
Jul 2023	110.6	107.0	115.0	125.5	113.8	120.9	135.5	106.4	112.5	104.9	109.4
Aug 2023	114.5	107.3	115.5	125.7	114.1	135.1	134.4	106.7	112.7	105.1	109.9
Sep 2023	116.2	107.8	116.1	125.3	114.6	140.5	133.7	107.5	112.9	105.7	110.3
Percentage Change over same period of previous year (%)											
2019	-1.0	0.9	1.5	0.4	1.2	-6.6	-9.6	-1.4	-0.1	1.3	2.0
2020	-7.0	0.3	1.4	-2.5	0.6	-29.8	14.0	-1.2	-0.2	-	3.8
2021	11.6	1.0	2.4	8.7	2.9	58.5	45.1	6.3	10.1	-1.4	0.4
2022	14.4	5.5	8.7	2.7	6.0	39.5	16.9	6.4	7.5	5.5	2.5
Sep 2022	9.0	5.9	11.0	1.7	5.6	16.8	5.8	4.8	3.5	7.0	2.4
Oct 2022	5.2	6.4	10.5	4.7	6.0	2.5	-0.4	3.6	2.7	8.1	2.1
Nov 2022	3.6	3.7	8.4	4.8	5.8	3.5	-5.3	1.7	0.4	4.9	0.6
Dec 2022	1.3	1.7	5.8	4.7	1.4	0.2	-8.0	0.1	-1.5	2.8	-0.9
Jan 2023	-1.7	1.0	4.6	5.6	2.3	-8.4	-9.1	-2.1	-2.0	1.9	-0.4
Feb 2023	-4.3	0.9	3.8	5.6	3.5	-15.8	-14.9	-2.0	-2.7	1.9	-0.3
Mar 2023	-10.1	0.7	2.7	6.8	2.8	-30.0	-20.5	-2.9	-4.4	2.2	-0.2
Apr 2023	-10.9	-0.7	1.0	7.6	1.9	-29.2	-24.4	-3.1	-5.7	0.1	0.2
May 2023	-14.0	-1.2	-0.1	12.1	2.4	-36.5	-29.3	-5.0	-5.9	-0.3	0.3
Jun 2023	-13.0	-0.8	0.6	14.1	2.9	-35.0	-30.7	-5.1	-5.5	0.3	0.2
Jul 2023	-7.4	-1.8	-0.9	15.3	2.2	-19.2	-24.3	-4.8	-5.7	-1.3	-
Aug 2023	-2.7	-1.0	-1.1	16.3	4.4	-6.3	-21.5	-3.7	-4.1	-0.7	0.9
Sep 2023	0.7	-1.5	-1.1	15.2	2.0	6.1	-18.8	-2.9	-4.0	-1.7	0.7

**Table 4 Export Price Index**

Section	All Items	Non-oil Items	Food & Live Animals	Beverages & Tobacco	Crude Materials	Mineral Fuels	Animal & Vegetable Oils, Fats & Waxes	Chemicals & Chemical Products	Manufactured Goods	Machinery & Transport Equipment	Misc Manufactured Articles
Weights	<b>10,000</b>	<b>8,022</b>	236	103	91	1,978	5	1,525	318	4,836	908
<b>Index (2018=100)</b>											
2018	<b>100.0</b>	<b>100.0</b>	100.0	100.0	100.0	100.0	100.0	100.0	100.0	100.0	100.0
2019	<b>98.6</b>	<b>100.1</b>	97.6	102.6	90.6	92.4	97.1	94.8	98.7	101.8	101.9
2020	<b>91.7</b>	<b>98.6</b>	94.7	103.4	81.0	63.7	101.9	91.1	97.9	100.6	103.2
2021	<b>102.1</b>	<b>103.0</b>	95.1	105.4	98.9	98.3	119.4	100.3	110.5	104.4	99.7
2022	<b>118.3</b>	<b>111.1</b>	97.1	109.8	108.3	147.8	146.7	109.2	120.8	113.4	101.9
Sep 2022	<b>116.6</b>	<b>111.3</b>	98.4	109.2	112.2	138.0	155.6	110.0	118.0	113.6	102.8
Oct 2022	<b>115.8</b>	<b>111.1</b>	99.0	111.2	110.0	135.0	154.8	108.5	117.0	113.9	101.7
Nov 2022	<b>114.0</b>	<b>108.7</b>	98.6	112.5	103.3	135.5	151.0	106.2	116.9	110.9	100.5
Dec 2022	<b>109.5</b>	<b>106.2</b>	95.6	106.9	100.7	122.5	142.2	103.4	117.6	108.5	98.0
Jan 2023	<b>108.0</b>	<b>104.7</b>	94.2	111.6	97.7	121.3	129.4	99.3	118.3	107.3	98.2
Feb 2023	<b>107.5</b>	<b>104.4</b>	94.2	113.4	96.7	120.0	129.6	100.2	118.3	106.9	95.7
Mar 2023	<b>108.1</b>	<b>105.5</b>	94.9	113.9	96.5	118.5	131.8	101.7	116.6	107.9	97.8
Apr 2023	<b>108.8</b>	<b>105.9</b>	94.9	115.6	96.8	120.7	131.1	101.4	118.5	108.3	98.3
May 2023	<b>108.6</b>	<b>106.8</b>	95.2	115.6	96.7	115.6	131.7	101.7	117.4	109.8	98.7
Jun 2023	<b>108.0</b>	<b>106.7</b>	95.1	117.7	95.4	113.4	132.2	100.9	118.0	109.7	98.8
Jul 2023	<b>108.7</b>	<b>105.8</b>	94.7	116.0	95.0	120.2	123.8	99.7	116.2	109.0	98.5
Aug 2023	<b>112.1</b>	<b>106.2</b>	93.6	116.8	95.5	136.0	123.9	100.3	115.9	109.3	98.9
Sep 2023	<b>113.6</b>	<b>106.6</b>	93.4	116.8	94.5	142.0	126.1	101.3	116.3	109.7	99.2
<b>Percentage Change over same period of previous year (%)</b>											
2019	<b>-1.4</b>	<b>0.1</b>	-2.4	2.6	-9.4	-7.6	-2.9	-5.2	-1.3	1.8	1.9
2020	<b>-7.0</b>	<b>-1.5</b>	-3.0	0.8	-10.6	-31.0	4.9	-4.0	-0.8	-1.2	1.3
2021	<b>11.3</b>	<b>4.5</b>	0.4	1.9	22.1	54.3	17.2	10.1	12.9	3.8	-3.3
2022	<b>15.9</b>	<b>7.8</b>	2.1	4.2	9.6	50.3	22.8	8.9	9.3	8.7	2.1
Sep 2022	<b>9.7</b>	<b>4.7</b>	2.6	3.3	9.3	29.6	24.8	7.9	4.3	4.0	3.8
Oct 2022	<b>6.4</b>	<b>3.9</b>	3.5	5.2	3.0	15.8	22.1	5.3	1.6	4.0	1.9
Nov 2022	<b>3.6</b>	<b>0.3</b>	1.2	4.5	-4.5	16.1	18.4	1.7	1.3	-0.2	-0.5
Dec 2022	<b>-0.2</b>	<b>-2.9</b>	0.4	-	-7.7	10.5	6.3	-1.6	1.6	-3.6	-3.1
Jan 2023	<b>-2.9</b>	<b>-4.7</b>	-2.4	2.4	-7.3	4.1	-1.9	-6.1	-1.5	-5.0	-3.0
Feb 2023	<b>-4.5</b>	<b>-3.9</b>	0.9	3.1	-9.0	-6.7	1.3	-5.5	-3.5	-3.4	-5.2
Mar 2023	<b>-10.0</b>	<b>-5.2</b>	-3.6	3.3	-10.9	-23.9	0.4	-7.1	-8.0	-4.8	-4.1
Apr 2023	<b>-12.4</b>	<b>-6.3</b>	-2.5	4.1	-12.4	-28.8	-12.5	-9.0	-7.3	-5.9	-4.3
May 2023	<b>-13.7</b>	<b>-6.2</b>	-0.3	3.8	-15.0	-33.7	-15.1	-9.9	-5.2	-5.6	-4.4
Jun 2023	<b>-15.0</b>	<b>-6.2</b>	-2.3	8.9	-12.5	-37.3	-14.8	-11.5	-3.6	-5.4	-4.7
Jul 2023	<b>-12.3</b>	<b>-6.7</b>	-2.2	6.6	-12.7	-27.6	-19.2	-11.7	-1.6	-6.1	-5.1
Aug 2023	<b>-6.0</b>	<b>-4.8</b>	-4.3	6.8	-14.7	-9.5	-18.6	-9.0	-2.1	-4.1	-2.7
Sep 2023	<b>-2.6</b>	<b>-4.2</b>	-5.1	7.0	-15.8	2.9	-19.0	-7.9	-1.4	-3.4	-3.5

**NOTATIONS**

- nes not elsewhere specified
- nil or negligible

**NOTES**

The Import and Export Price Indices report contains statistics that are the most recent available at the time of its preparation.

Some statistics, particularly those for the most recent time periods, are provisional and may be subject to revision in later issues.

# SINGAPORE DEPARTMENT OF STATISTICS COMMUNICATIONS & INFORMATION SERVICES

Singapore Department of Statistics (DOS) offers official statistics, data insights, visualisations and statistical resources through user-friendly platforms.



## SingStat Website

Visit this convenient gateway to access latest data and statistical information.

**Data** across the six major themes of Economy & Prices, Industry, Trade & Investment, Population, Households and Society, covering some 200 topics such as Gross Domestic Product, Consumer Price Index, Retail Sales and Food & Beverage Services Indices, Producer Price Indices, Business Expectations, Business Receipts Index, Trade in Services, Direct Investment, Population Indicators, Household Income, Household Expenditure, Deaths and Life Expectancy, Births and Fertility, Marriages and Divorces, and more.

## Publications

- Information Papers which highlight conceptual and methodological changes and improvements in official statistics.
- Occasional Papers which present statistical trends and observations on important social and economic issues to stimulate discussion and research.
- eBook of Statistics which consolidates latest information and resources on key economic and socio-demographic domains.
- Singapore in Figures which allows exploration of key economic and socio-demographic statistics through interactive dashboards.
- Statistics Singapore Newsletter which features articles on latest key statistical activities, recent survey findings and methodological improvements.

**Visualisations** such as infographics and interactive dashboards with latest data, and videos to explain data and statistical concepts.

**Data for Businesses** with data tools to empower data-driven business decisions, giving firms insights on their customers, industries and business performance.

**Advance Release Calendar** providing dates of upcoming data releases in the next six months.



## SingStat Table Builder

Access for free over 2,200 data tables across various economic and socio-demographic domains from 70 public sector agencies. Watch the [video](#) to find out how you can easily access and customise data tables.



## SingStat Mobile App

Download the app for fast and convenient access to commonly referenced statistics via your mobile devices. Over 260 charts are available across 38 data categories for easy visualisation of data trends.



## SingStat Express

Subscribe to receive alerts on the latest press releases, occasional/information papers and newsletters.



For statistical enquiries, you may reach us at:

email: [info@singstat.gov.sg](mailto:info@singstat.gov.sg) or submit the [Data Request Form](#)

phone: 1800-323 8118\* (Local users) or (65) 6332 7738 (Overseas users)

\* Calls from mobile telephone lines to 1800 local toll-free number may be subject to mobile airtime charges as imposed by the relevant mobile service provider.

Find us on social media!

- @SingStat
- @singstat\_dos
- @SingStatvideo
- @sg-department-of-statistics