



SINGAPORE MANUFACTURED PRODUCTS & DOMESTIC SUPPLY PRICE INDICES

April 2018

**SINGAPORE MANUFACTURED PRODUCTS &
DOMESTIC SUPPLY PRICE INDICES, April 2018**
ISSN 2591-7447

© Department of Statistics, Ministry of Trade & Industry, Republic of Singapore

Reproducing or quoting any part of this publication is permitted, provided this publication is accredited as the source. Please refer to the Statistics Singapore Website Terms of Use (<http://www.singstat.gov.sg/terms-of-use>) for more details on the conditions of use of this publication.

Statistical activities conducted by the Singapore Department of Statistics are governed by the provisions of the Statistics Act (Cap. 317). The Act guarantees the confidentiality of information collected from individuals and companies. It spells out the legislative authority and responsibility of the Chief Statistician. The Act is available in the Department's Website (www.singstat.gov.sg).

SINGAPORE MANUFACTURED PRODUCTS PRICE INDEX (2012 = 100)

April 2018

Singapore Manufactured Products Price Index

Change over previous month

The Singapore Manufactured Products Price Index fell 2.1 per cent in April 2018, in contrast to the 1.5 per cent increase in March 2018. The Oil index rose 4.5 per cent against the 0.5 per cent decrease in March 2018, due mainly to pricier diesel fuel & fuel oils and power kerosene. The Non-oil index slipped 3.4 per cent in April 2018, after rising 2.0 per cent in the previous month.

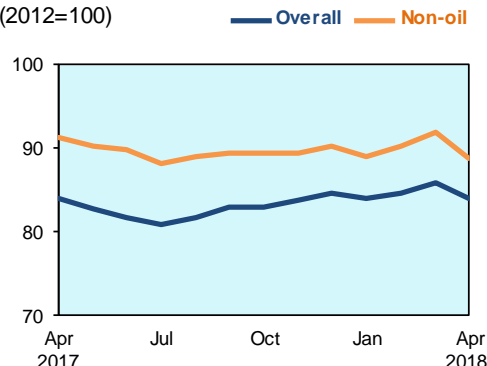
Declines in the Non-oil sub-indices were led by the Chemicals & Chemical Products (-11.6 per cent) index, due mainly to lower price of organic chemicals, and the Manufactured Goods (-0.2 per cent) index. The declines were partially offset by increases in the Machinery & Transport Equipment (1.3 per cent) index, due mainly to higher prices of integrated circuits, and the Animal & Vegetable Oils (0.4 per cent) index.

Change over same period of previous year

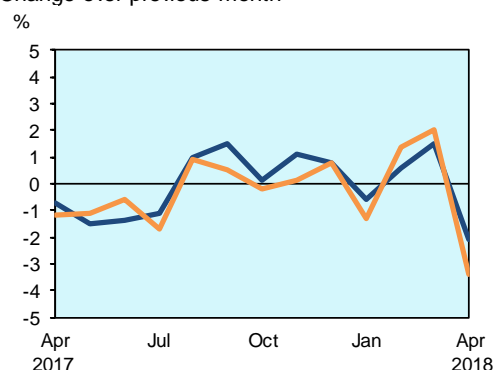
The Singapore Manufactured Products Price Index was unchanged in April 2018 over the previous year, compared to the 1.4 per cent increase in March 2018. The Oil index rose 15.0 per cent while the Non-oil index fell 2.8 per cent.

Among the Non-oil sub-indices, lower prices of Animal & Vegetable Oils (-13.2 per cent), Machinery & Transport Equipment (-5.6 per cent), Chemicals & Chemical Products (-1.3 per cent) and Food & Live Animals (-1.0 per cent) were partially moderated by higher prices of Crude Materials (6.7 per cent), Miscellaneous Manufactured Articles (2.8 per cent), Manufactured Goods (2.4 per cent) and Beverages & Tobacco (0.7 per cent).

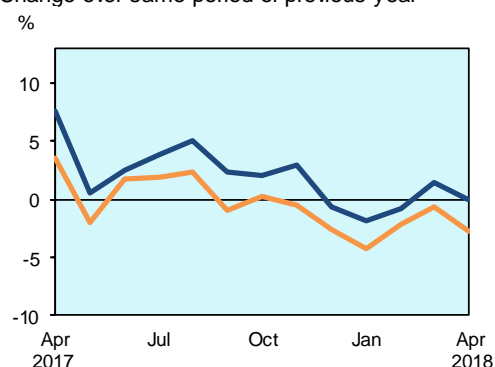
Singapore Manufactured Products Price Index (2012=100)



Change over previous month



Change over same period of previous year



DOMESTIC SUPPLY PRICE INDEX (2012 = 100)

April 2018

Domestic Supply Price Index

Change over previous month

The Domestic Supply Price Index rose 1.5 per cent in April 2018, compared to the 0.2 per cent decline in the previous month. The Oil index went up 5.8 per cent in April 2018, attributed mainly to higher prices of crude petroleum and diesel fuel & fuel oils. It was unchanged in March 2018. The Non-oil index fell 0.2 per cent, extending the 0.3 per cent decline in the previous month.

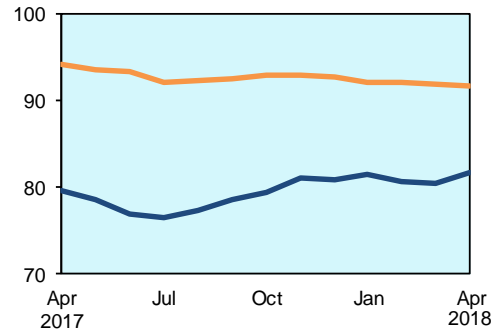
Declines in the Non-oil sub-indices led by the Chemicals & Chemical Products (-3.4 per cent) index, due mainly to lower prices of organic chemicals, and the Manufactured Goods (-0.1 per cent) index were partially moderated by increases in the Machinery & Transport Equipment (0.8 per cent) and Miscellaneous Manufactured Articles (0.1 per cent) indices.

Change over same period of previous year

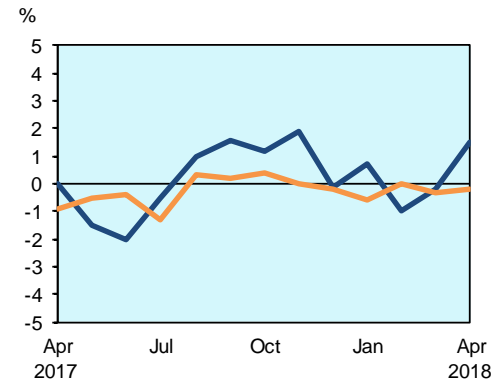
The Domestic Supply Price Index rose 2.5 per cent in April 2018 from a year ago, following the 1.0 per cent increase from the previous month. The Oil index rose 17.4 per cent while the Non-oil index declined 2.6 per cent.

For the Non-oil sub-indices, decreases in the Animal & Vegetable Oils (-8.9 per cent), Machinery & Transport Equipment (-4.4 per cent), Miscellaneous Manufactured Articles (-2.9 per cent), Food & Live Animals (-2.5 per cent) and Chemicals & Chemical Products (-0.5 per cent) indices were partially offset by increases in the Manufactured Goods (2.6 per cent), Crude Materials (1.9 per cent) and Beverages & Tobacco (0.6 per cent) indices.

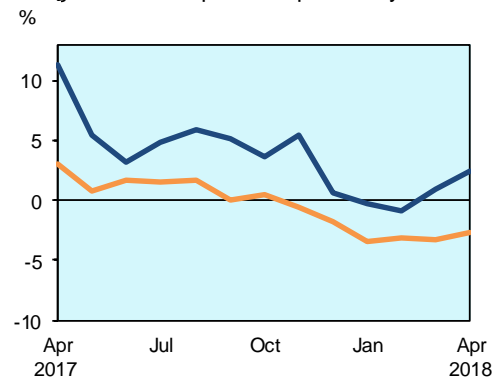
Domestic Supply Price Index
(2012=100) — Overall — Non-oil



Change over previous month



Change over same period of previous year



TECHNICAL NOTE

The *Singapore Manufactured Products Price Index (SMPPI)* monitors price changes of locally manufactured commodities. The weights of the index are derived from the distribution of local production by commodity in 2011. Ex-factory prices are obtained from principal manufacturers of the items concerned.

The *Domestic Supply Price Index (DSPI)* is designed to measure the changes in the price level of goods manufactured locally or imported which are retained for use in the domestic economy by the government, business or household sectors. For imported products, the prices refer to those paid by importers in bringing the goods into Singapore, commonly referred to as c.i.f. prices. In the case of Singapore manufactured products, the quotations used are ex-factory prices. The weight for each commodity item is proportional to the value of its total supply or availability in the domestic market in 2011.

Index Formula

The 2012-based series is compiled using the 'modified Laspeyres' formula where the weight reference period of 2011 preceded the price reference period of 2012. The geometric mean (GM) formula has been adopted in the computation of unweighted elementary aggregate price indices. The arithmetic mean (AM) formula is applied in compiling indices at higher levels of aggregation where weights of specific sub-indices are available.

An Information Paper on the Rebasing of Singapore Manufactured Products and Domestic Supply Price Indices (2012=100) is available on the department's website at <https://www.singstat.gov.sg/ppi#Producer-and-International-Trade-Prices>.

Measurement of Changes in Price Indices

Change over previous month compares the index of the month with that of the preceding month. Such comparisons measure the change in the price index between two consecutive months. They serve as useful short-term indicators of the price movements. As the price indices are found not to be seasonal, it is not necessary for seasonal adjustment to be carried out.

Change over same period of previous year measures change in the index over a twelve-month period. Such comparisons compare the movement in the price index between similar months in two consecutive years.

Dissemination of Data

The Singapore Manufactured Products and Domestic Supply Price Indices are available on the SingStat Website (www.singstat.gov.sg/tablebuilder).

Table 1 Singapore Manufactured Products Price Index

April 2018

Commodity section / division	Weights	Index (2012=100)			% Change		
					Mar 2018	Apr 2018	Apr 2018
		Feb 2018	Mar 2018	Apr 2018	Feb 2018	Mar 2018	Apr 2017
All Items	10,000	84.6	85.9	84.1	1.5	-2.1	-
Non-oil Items	7,782	90.2	92.0	88.9	2.0	-3.4	-2.8
Food & Live Animals	266	102.0	102.1	102.1	-	-	-1.0
Meat & meat preparations	22	100.3	100.1	100.1	-0.2	-	0.2
Dairy products & birds' eggs	58	95.1	95.0	94.7	-0.1	-0.3	-2.9
Fish seafood & preparations	7	119.2	119.2	119.1	-	-	-0.8
Cereals & cereal preparations	44	108.0	108.6	109.3	0.5	0.6	-
Vegetables & fruit	4	104.3	104.3	104.3	-	-	-
Sugar, sugar preparations & honey	2	101.3	102.6	102.2	1.3	-0.4	1.6
Coffee, tea, cocoa, spices & manufactures	31	98.5	99.3	100.3	0.7	1.1	-0.2
Animal feeding stuff (excl unmilled cereals)	9	106.9	106.9	106.4	-	-0.5	1.8
Miscellaneous food preparations	89	103.3	103.0	102.7	-0.3	-0.3	-1.2
Beverages & Tobacco	54	98.4	98.1	98.2	-0.2	-	0.7
Beverages	27	96.0	96.0	96.0	-	-	-1.8
Tobacco & manufactures	27	100.6	100.2	100.2	-0.5	0.1	3.0
Crude Materials (excl fuels)	7	115.5	115.6	115.5	0.1	-0.1	6.7
Cork & wood	1	124.8	125.2	125.3	0.3	0.1	1.4
Crude fertilizers & minerals	3	132.0	132.3	132.0	0.2	-0.2	13.6
Metalliferous ores & metal scrap	3	98.1	98.1	98.1	-	-	-
Mineral Fuels, Lubricants & Related Materials	2,218	64.9	64.5	67.4	-0.5	4.5	15.0
Petroleum & products & related materials	2,187	64.9	64.7	67.6	-0.4	4.5	15.3
Gas	31	61.1	55.9	56.1	-8.4	0.3	-5.2
Animal & Vegetable Oils, Fats & Waxes	28	90.6	89.5	89.8	-1.2	0.4	-13.2
Fixed vegetable fats & oils	16	109.0	107.6	107.9	-1.3	0.3	-14.4
Animal & vegetable oils, fats & waxes nes	12	66.5	65.9	66.2	-1.0	0.6	-10.7
Chemicals & Chemical Products	2,335	96.8	103.8	91.7	7.2	-11.6	-1.3
Organic chemicals	1,402	99.8	110.6	90.6	10.8	-18.2	-0.1
Inorganic chemicals	56	83.8	84.4	84.4	0.8	-	0.8
Dyeing, tanning & colouring materials	33	94.6	94.5	93.4	-0.1	-1.1	-0.3
Medicinal & pharmaceutical products	157	99.2	99.0	99.0	-0.1	-	-2.3
Essential oils & perfume; toilet cleaning products	64	110.2	109.5	109.6	-0.6	0.1	2.1
Plastics in primary forms	323	92.6	96.1	96.1	3.7	-	2.0
Plastics in non-primary forms	38	91.9	91.9	92.0	-	0.1	-6.0
Chemical materials & products nes	262	84.6	84.9	85.0	0.4	-	-11.4
Manufactured Goods	439	97.7	97.7	97.5	-	-0.2	2.4
Leather manufactures nes	5	140.8	140.8	140.8	-	-	11.8
Rubber manufactures nes	18	111.9	111.6	111.6	-0.2	-	3.5
Wood & cork manufactures (excl furniture)	8	103.8	103.8	103.8	-	-	-
Paper manufactures	44	98.2	98.2	98.2	-	-	-3.4
Textile manufactures	10	104.3	104.3	104.3	-	-	2.0
Non-metal mineral manufactures nes	77	97.3	97.3	97.3	0.1	-	1.3
Iron & steel	63	75.6	75.1	74.3	-0.7	-1.1	3.9
Non-ferrous metals	31	104.8	105.0	104.9	0.2	-0.1	5.7
Manufactures of metals nes	183	101.1	101.3	101.1	0.2	-0.2	3.0
Machinery & Transport Equipment	3,900	83.3	82.6	83.7	-0.7	1.3	-5.6
Power-generating machinery & equipment	33	96.1	96.0	96.0	-0.2	-	5.6
Machinery specialized for particular industries	376	90.6	91.6	90.8	1.1	-0.9	-0.7
Metal working machinery	21	96.5	96.5	96.5	-	-	-0.3
General industrial machinery	167	99.4	99.3	98.9	-0.1	-0.4	-3.4
Office machines & data-processing machines	1,143	75.2	75.0	75.0	-0.3	-	-7.5
Telecommunication apparatus	49	97.8	97.8	97.7	-	-0.1	-3.2
Electrical machinery apparatus nes, electrical parts	2,076	83.8	82.6	84.7	-1.4	2.6	-6.3
Road vehicles	35	116.8	116.3	116.7	-0.4	0.4	2.4
Miscellaneous Manufactured Articles	753	96.4	96.3	96.2	-0.1	-0.1	2.8
Furniture, bedding, mattresses, cushions & others	31	118.2	118.2	118.2	-	-	1.0
Travel goods, handbags & similar containers	1	110.2	110.1	110.1	-	-	-3.2
Articles of apparel & clothing accessories	27	94.1	94.0	94.0	-0.1	-	-4.1
Professional scientific & controlling instruments	327	91.2	90.7	90.7	-0.5	-	-5.6
Photographic & optical goods nes; watches & clocks	21	81.1	81.0	80.9	-0.1	-0.1	-0.2
Miscellaneous manufactured articles nes	346	100.4	100.6	100.5	0.2	-0.2	12.5

Table 2 Domestic Supply Price Index

April 2018

Commodity section / division	Weights	Index (2012=100)			% Change		
		Feb 2018	Mar 2018	Apr 2018	Mar 2018	Apr 2018	Apr 2018
					Feb 2018	Mar 2018	Apr 2017
All Items	10,000	80.7	80.5	81.7	-0.2	1.5	2.5
Non-oil Items	6,300	92.2	91.9	91.7	-0.3	-0.2	-2.6
Food & Live Animals	327	100.3	98.8	98.8	-1.5	-	-2.5
Live animals	14	100.2	95.2	95.0	-5.0	-0.2	-4.0
Meat & meat preparations	44	99.3	97.3	97.4	-2.0	0.1	-5.3
Dairy products & birds' eggs	72	94.3	92.8	92.9	-1.6	0.1	-3.3
Fish seafood & preparations	23	111.1	112.0	112.2	0.8	0.2	1.0
Cereals & cereal preparations	49	103.8	105.0	105.7	1.2	0.7	3.9
Vegetables & fruit	26	112.1	102.3	101.0	-8.7	-1.3	-3.7
Sugar, sugar preparations & honey	13	82.7	79.8	79.1	-3.4	-0.9	-19.9
Coffee, tea, cocoa, spices & manufactures	27	93.7	93.6	93.3	-0.1	-0.4	-6.9
Animal feeding stuff (excl unmilled cereals)	4	108.4	108.6	108.2	0.2	-0.4	3.1
Miscellaneous food preparations	55	102.3	102.1	102.5	-0.2	0.4	0.3
Beverages & Tobacco	44	100.1	99.9	99.9	-0.2	-	0.6
Beverages	31	98.3	98.1	98.1	-0.2	-	-0.1
Tobacco & manufactures	13	104.5	104.1	104.2	-0.4	0.1	2.1
Crude Materials (excl fuels)	59	88.2	88.0	88.2	-0.3	0.3	1.9
Hides, skins & furskins raw	2	85.1	85.1	85.1	-0.1	-	-7.2
Oil seeds & oleaginous fruits	1	91.5	92.0	92.0	0.5	0.1	-5.4
Crude rubber	2	85.7	85.4	85.4	-0.4	-	-5.8
Cork & wood	5	92.7	92.7	93.4	-	0.7	2.2
Textile fibres & their wastes	1	97.8	97.7	97.7	-0.1	-	-11.2
Crude fertilizers & minerals	31	81.1	81.0	81.1	-0.2	0.2	2.4
Metalliferous ores & metal scrap	11	96.7	95.9	96.0	-0.9	0.1	5.8
Crude animal & vegetable materials nes	6	105.3	105.3	105.9	-	0.6	0.4
Mineral Fuels, Lubricants & Related Materials	3,700	61.2	61.2	64.8	-	5.8	17.4
Petroleum & products & related materials	3,527	60.6	60.6	64.2	0.1	5.9	17.9
Gas	173	75.2	73.7	75.8	-1.9	2.8	10.7
Animal & Vegetable Oils, Fats & Waxes	44	74.6	73.5	73.4	-1.5	-0.2	-8.9
Fixed vegetable fats & oils	32	76.9	75.6	75.3	-1.7	-0.5	-8.6
Animal & vegetable oils, fats & waxes nes	12	68.2	67.6	68.0	-0.9	0.5	-9.8
Chemicals & Chemical Products	1,181	89.2	91.1	88.0	2.1	-3.4	-0.5
Organic chemicals	612	90.0	93.4	87.0	3.7	-6.8	2.7
Inorganic chemicals	64	90.8	91.7	93.0	0.9	1.4	11.7
Dyeing, tanning & colouring materials	17	90.1	90.2	89.8	0.1	-0.4	-0.6
Medicinal & pharmaceutical products	102	80.0	79.8	79.4	-0.2	-0.5	-2.3
Essential oils & perfume; toilet cleaning products	30	98.4	98.1	98.0	-0.2	-0.2	0.9
Plastics in primary forms	92	89.8	92.8	93.2	3.3	0.5	1.3
Plastics in non-primary forms	24	97.2	97.5	97.5	0.3	-	-1.3
Chemical materials & products nes	240	88.4	87.9	88.7	-0.5	0.8	-10.2
Manufactured Goods	668	94.3	94.3	94.1	-	-0.1	2.6
Leather manufactures nes	2	140.8	140.8	140.8	-	-	11.8
Rubber manufactures nes	18	94.3	93.6	93.6	-0.7	-	-3.6
Wood & cork manufactures (excl furniture)	7	104.2	104.2	104.2	-	-	-
Paper manufactures	67	100.6	100.8	101.3	0.2	0.5	2.5
Textile manufactures	11	97.1	97.4	97.9	0.3	0.5	-2.6
Non-metal mineral manufactures nes	130	95.3	95.6	95.4	0.2	-0.1	-0.7
Iron & steel	148	84.5	85.4	84.8	1.1	-0.7	7.2
Non-ferrous metals	118	96.1	94.2	94.1	-2.0	-0.1	3.4
Manufactures of metals nes	167	97.2	97.6	97.5	0.4	-0.1	2.4
Machinery & Transport Equipment	3,229	90.9	89.8	90.6	-1.2	0.8	-4.4
Power-generating machinery & equipment	176	128.3	128.0	128.0	-0.2	-	-0.8
Machinery specialized for particular industries	188	93.2	93.7	93.3	0.5	-0.5	-3.2
Metal working machinery	6	100.4	100.6	100.3	0.2	-0.3	-1.0
General industrial machinery	149	101.0	100.5	100.5	-0.5	-	-1.9
Office machines & data-processing machines	234	96.7	96.6	96.6	-0.1	-	-2.3
Telecommunication apparatus	233	67.8	67.4	66.5	-0.7	-1.2	-4.5
Electrical machinery apparatus nes, electrical parts	2,176	88.2	86.7	88.0	-1.8	1.5	-5.6
Road vehicles	67	109.3	110.4	110.4	1.0	-0.1	2.7
Miscellaneous Manufactured Articles	748	97.9	97.7	97.8	-0.2	0.1	-2.9
Prefab building, sanitary plumbing, lighting nes	10	101.1	100.9	101.0	-0.2	0.1	-0.1
Furniture, bedding, mattresses, cushions & others	51	111.0	111.0	111.1	0.1	0.1	2.0
Travel goods, handbags & similar containers	22	118.0	117.6	117.6	-0.3	-	-0.3
Articles of apparel & clothing accessories	24	107.6	107.7	107.1	0.1	-0.6	0.8
Footwear	14	105.8	105.8	105.8	-	-	0.6
Professional scientific & controlling instruments	312	97.8	97.2	97.3	-0.6	-	-5.6
Photographic & optical goods nes; watches & clocks	93	94.7	94.7	94.2	-	-0.5	-1.9
Miscellaneous manufactured articles nes	222	92.6	92.7	93.3	0.1	0.7	-1.6

Table 3 Singapore Manufactured Products Price Index

Section	All Items	Non-oil Items	Food & Live Animals	Beverages & Tobacco	Crude Materials	Mineral Fuels	Animal & Vegetable Oils, Fats & Waxes	Chemicals & Chemical Products	Manufactured Goods	Machinery & Transport Equipment	Misc. Manufactured Articles
Weights	10,000	7,782	266	54	7	2,218	28	2,335	439	3,900	753
Index (2012=100)											
2014	93.6	94.8	104.9	100.6	104.2	89.6	94.3	99.1	98.9	90.6	96.4
2015	85.0	92.7	103.5	101.4	104.9	58.3	90.1	88.1	98.0	93.7	93.8
2016	80.4	89.8	102.6	101.8	109.0	47.1	95.2	86.4	94.3	89.7	92.8
2017	83.4	90.4	102.5	97.3	108.8	58.9	99.9	90.8	95.9	87.8	94.6
2017											
Apr	84.1	91.4	103.1	97.5	108.3	58.6	103.6	92.9	95.2	88.7	93.5
May	82.8	90.4	102.7	97.6	108.1	56.5	102.7	89.5	95.0	88.7	93.2
Jun	81.7	89.8	102.5	97.5	107.8	53.4	101.8	88.0	94.8	88.6	93.0
Jul	80.8	88.3	102.0	97.4	109.6	54.7	101.2	87.0	95.4	86.3	92.2
Aug	81.7	89.1	101.6	97.7	109.3	55.7	98.4	89.8	95.5	85.7	94.8
Sep	82.9	89.5	101.6	97.7	109.3	59.8	97.1	90.4	97.0	85.7	97.0
Oct	83.0	89.4	101.7	96.6	109.1	60.6	97.0	89.2	97.2	86.1	97.1
Nov	83.9	89.5	101.9	96.6	109.2	64.3	96.6	89.6	97.4	86.0	97.0
Dec	84.6	90.2	101.9	96.7	108.9	64.9	95.4	93.5	97.1	85.2	96.9
2018											
Jan	84.1	89.0	102.0	97.8	115.7	66.9	91.6	91.4	97.4	84.1	96.2
Feb	84.6	90.2	102.0	98.4	115.5	64.9	90.6	96.8	97.7	83.3	96.4
Mar	85.9	92.0	102.1	98.1	115.6	64.5	89.5	103.8	97.7	82.6	96.3
Apr	84.1	88.9	102.1	98.2	115.5	67.4	89.8	91.7	97.5	83.7	96.2
Percentage Change over same period of previous year (%)											
2015	-9.2	-2.2	-1.3	0.8	0.6	-35.0	-4.4	-11.1	-0.9	3.4	-2.6
2016	-5.5	-3.1	-0.9	0.4	3.8	-19.2	5.6	-2.0	-3.8	-4.3	-1.1
2017	3.8	0.7	-0.2	-4.4	-0.1	25.0	5.0	5.1	1.6	-2.2	1.9
2017											
Apr	7.6	3.6	0.9	-4.8	-1.0	35.9	8.3	9.3	1.0	1.4	1.1
May	0.5	-2.0	0.4	-4.6	-0.9	17.1	7.1	-5.5	0.1	-0.7	0.3
Jun	2.5	1.7	0.7	-4.5	-1.1	7.5	5.5	5.6	-0.3	-0.1	1.3
Jul	3.9	1.9	0.1	-4.7	0.7	17.0	5.6	8.7	1.6	-1.5	1.2
Aug	5.0	2.4	-0.4	-4.4	0.5	22.2	3.8	11.4	2.2	-2.5	3.6
Sep	2.3	-1.0	-0.6	-4.4	0.7	23.9	1.5	1.8	3.8	-4.4	5.0
Oct	2.1	0.2	-1.6	-4.4	0.9	13.0	1.9	4.9	3.6	-3.6	4.7
Nov	2.9	-0.5	-1.4	-4.3	0.9	23.3	-1.5	5.9	3.5	-5.2	3.8
Dec	-0.6	-2.6	-1.8	-4.3	0.7	10.7	-6.2	2.6	2.6	-7.4	3.1
2018											
Jan	-1.9	-4.3	-1.6	0.3	6.4	10.9	-10.2	-2.1	2.3	-8.1	2.7
Feb	-0.8	-2.2	-1.6	0.9	6.4	6.5	-10.7	4.4	2.7	-7.9	2.9
Mar	1.4	-0.6	-1.1	0.6	6.6	12.9	-12.5	11.2	2.5	-8.9	3.1
Apr	-	-2.8	-1.0	0.7	6.7	15.0	-13.2	-1.3	2.4	-5.6	2.8

Table 4 Domestic Supply Price Index

Section	All Items	Non-oil Items	Food & Live Animals	Beverages & Tobacco	Crude Materials	Mineral Fuels	Animal & Vegetable Oils, Fats & Waxes	Chemicals & Chemical Products	Manufactured Goods	Machinery & Transport Equipment	Misc. Manufactured Articles
Weights	10,000	6,300	327	44	59	3,700	44	1,181	668	3,229	748
Index (2012=100)											
2014	94.1	97.2	104.8	101.0	100.5	88.7	84.2	98.8	96.7	95.9	98.0
2015	79.7	95.9	101.7	101.9	96.5	52.1	74.2	86.2	94.8	98.6	98.5
2016	74.1	92.6	99.7	101.5	87.9	42.6	78.0	82.4	89.1	95.1	99.0
2017	79.4	93.6	101.6	99.8	87.1	55.2	79.9	87.0	92.5	94.2	99.6
2017											
Apr	79.7	94.2	101.3	99.3	86.5	55.1	80.5	88.4	91.8	94.8	100.7
May	78.6	93.7	101.4	99.7	86.9	52.9	81.4	86.2	91.8	94.8	100.1
Jun	77.0	93.4	101.3	99.8	86.6	49.1	79.0	84.4	91.6	94.9	100.0
Jul	76.6	92.1	101.1	99.8	86.9	50.2	77.8	83.3	91.4	93.2	98.9
Aug	77.4	92.4	101.1	100.2	87.0	51.8	77.2	85.5	92.2	92.8	98.8
Sep	78.6	92.6	101.9	100.2	87.2	54.7	78.1	86.4	92.9	92.6	98.8
Oct	79.5	93.0	101.5	99.6	87.5	56.6	78.0	86.4	93.8	93.2	98.9
Nov	81.0	93.0	101.7	99.5	87.6	60.7	77.0	86.6	94.0	93.1	98.8
Dec	81.0	92.8	101.8	99.4	87.4	60.9	74.0	88.3	93.8	92.4	98.1
2018											
Jan	81.5	92.2	100.4	99.9	88.1	63.3	74.3	87.8	94.0	91.5	97.7
Feb	80.7	92.2	100.3	100.1	88.2	61.2	74.6	89.2	94.3	90.9	97.9
Mar	80.5	91.9	98.8	99.9	88.0	61.2	73.5	91.1	94.3	89.8	97.7
Apr	81.7	91.7	98.8	99.9	88.2	64.8	73.4	88.0	94.1	90.6	97.8
Percentage Change over same period of previous year (%)											
2015	-15.3	-1.4	-3.0	0.9	-4.0	-41.3	-11.9	-12.8	-2.0	2.9	0.5
2016	-6.9	-3.4	-2.0	-0.4	-8.9	-18.2	5.1	-4.4	-6.0	-3.6	0.5
2017	7.0	1.0	1.9	-1.7	-0.9	29.4	2.4	5.7	3.8	-1.0	0.6
2017											
Apr	11.3	3.0	2.7	-2.4	-1.9	45.1	2.3	8.1	3.7	1.5	3.1
May	5.5	0.8	3.1	-1.9	-0.9	23.3	3.2	1.4	3.6	-0.4	1.5
Jun	3.2	1.7	3.0	-1.5	-0.7	8.3	2.4	4.4	3.5	0.5	1.9
Jul	4.8	1.5	2.3	-1.4	-0.5	16.6	3.7	5.3	3.5	-	0.9
Aug	5.9	1.7	2.3	-1.0	0.1	21.1	-0.7	7.7	4.7	-0.5	0.5
Sep	5.2	0.1	2.4	-1.1	0.8	23.4	-2.4	3.9	5.3	-2.3	-0.2
Oct	3.6	0.5	0.8	-1.4	0.8	13.5	-0.9	3.7	5.8	-1.4	-0.6
Nov	5.4	-0.5	0.2	-1.6	0.1	25.0	-5.5	4.6	4.2	-2.9	-1.5
Dec	0.7	-1.8	-0.7	-1.8	-0.4	7.8	-13.9	1.2	2.5	-3.5	-2.1
2018											
Jan	-0.2	-3.5	-1.9	-0.1	0.7	8.9	-14.5	-2.1	1.8	-5.3	-2.8
Feb	-0.9	-3.2	-1.8	0.2	1.0	5.5	-12.9	-0.9	1.9	-5.3	-2.9
Mar	1.0	-3.3	-2.9	-	1.4	13.9	-11.3	2.1	2.1	-6.5	-2.7
Apr	2.5	-2.6	-2.5	0.6	1.9	17.4	-8.9	-0.5	2.6	-4.4	-2.9

NOTATIONS

nes not elsewhere specified
- nil or negligible

NOTES

The Singapore Manufactured Products and Domestic Supply Price Indices report contains statistics that are the most recent available at the time of its preparation.

Some statistics, particularly those for the most recent time periods, are provisional and may be subject to revision in later issues.