



# SINGAPORE MANUFACTURED PRODUCTS & DOMESTIC SUPPLY PRICE INDICES

August 2018

**SINGAPORE MANUFACTURED PRODUCTS &  
DOMESTIC SUPPLY PRICE INDICES, August 2018**  
**ISSN 2591-7447**

© Department of Statistics, Ministry of Trade & Industry, Republic of Singapore

Reproducing or quoting any part of this publication is permitted, provided this publication is accredited as the source. Please refer to the Statistics Singapore Website Terms of Use (<http://www.singstat.gov.sg/terms-of-use>) for more details on the conditions of use of this publication.

Statistical activities conducted by the Singapore Department of Statistics are governed by the provisions of the Statistics Act (Cap. 317). The Act guarantees the confidentiality of information collected from individuals and companies. It spells out the legislative authority and responsibility of the Chief Statistician. The Act is available in the Department's Website ([www.singstat.gov.sg](http://www.singstat.gov.sg)).

# SINGAPORE MANUFACTURED PRODUCTS PRICE INDEX (2012 = 100)

**August 2018**

## Singapore Manufactured Products Price Index

### *Change over previous month*

The Singapore Manufactured Products Price Index rose 0.2 per cent in August 2018, following the 1.7 per cent increase in July 2018. The Oil index went up 1.3 per cent, extending the 1.4 per cent gain in July 2018, due mainly to higher prices of diesel fuel & fuel oil and motor spirits. The Non-oil index fell 0.1 per cent in August 2018, in contrast to the 1.8 per cent increase in the previous month.

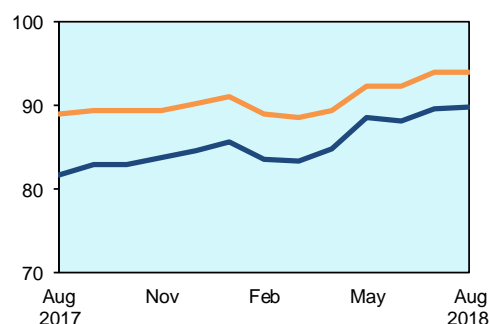
For the Non-oil sub-indices, the decreases were led by the Chemicals & Chemical Products (-2.3 per cent) index, due mainly to lower prices of organic chemicals, and the Manufactured Goods (-0.1 per cent) index. The declines were partially moderated by increases led by the Machinery & Transport Equipment (1.3 per cent) index, due to higher prices of integrated circuits, and the Miscellaneous Manufactured Articles (0.7 per cent) index.

### *Change over same period of previous year*

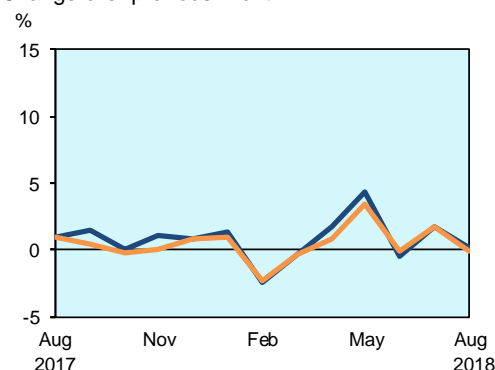
The Singapore Manufactured Products Price Index increased 9.9 per cent in August 2018 over the previous year, extending the 10.9 per cent increase in July 2018. The Oil and Non-Oil indices rose 35.2 per cent and 5.4 per cent respectively.

All Non-oil sub-indices were higher, except for the Animal & Vegetable Oils (-16.8 per cent) index. Higher prices were registered for Chemicals & Chemical Products (11.7 per cent), Crude Materials (4.8 per cent), Miscellaneous Manufactured Articles (3.5 per cent), Machinery & Transport Equipment (2.8 per cent), Manufactured Goods (2.8 per cent), Food & Live Animals (2.3 per cent) and Beverages & Tobacco (1.6 per cent).

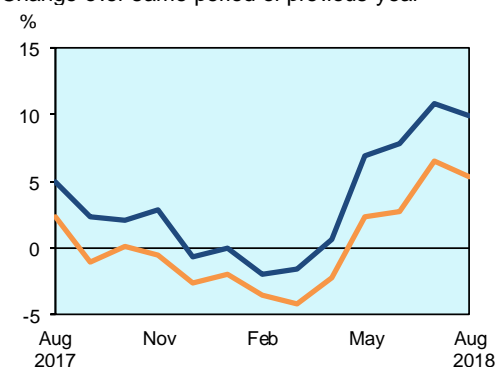
Singapore  
Manufactured Products Price Index  
(2012=100)



Change over previous month



Change over same period of previous year



# DOMESTIC SUPPLY PRICE INDEX (2012 = 100)

## August 2018

### Domestic Supply Price Index

#### *Change over previous month*

The Domestic Supply Price Index rose 0.3 per cent in August 2018, following the 1.1 per cent increase in the previous month. The Oil index edged up 0.3 per cent in August 2018, continuing the 1.3 per cent increase in July 2018, due mainly to higher prices of high speed diesel fuel and diesel fuel & fuel oil. The Non-oil index rose 0.3 per cent, after increasing 1.0 per cent in the previous month.

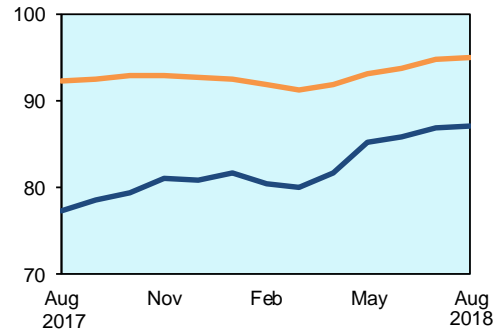
Among the Non-oil sub-indices, increases led by the Machinery & Transport Equipment (0.7 per cent) and Miscellaneous Manufactured Articles (0.2 per cent) indices were partially offset by decreases led by the Chemicals & Chemical Products (-0.4 per cent) and Animal & Vegetable Oils (-0.4 per cent) indices.

#### *Change over same period of previous year*

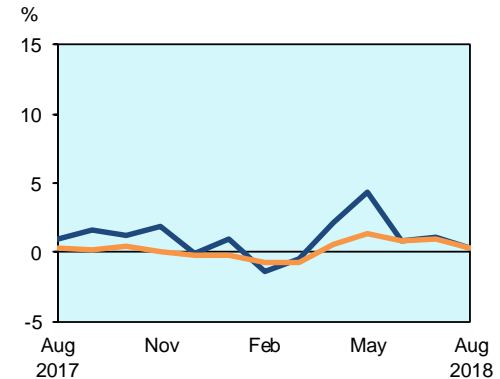
The Domestic Supply Price Index rose 12.7 per cent in August 2018 over the previous year, following the 13.5 per cent increase in July 2018. The Oil and Non-Oil indices increased 42.5 per cent and 3.0 per cent respectively in August 2018.

Among the Non-oil sub-indices, higher prices of Chemicals & Chemical Products (9.5 per cent), Manufactured Goods (4.6 per cent), Machinery & Transport Equipment (1.7 per cent), Beverages & Tobacco (1.3 per cent), Crude Materials (1.1 per cent) and Food & Live Animals (0.5 per cent) were partially offset by lower prices of Animals & Vegetable Oils (-10.1 per cent) and Miscellaneous Manufactured Articles (-0.2 per cent).

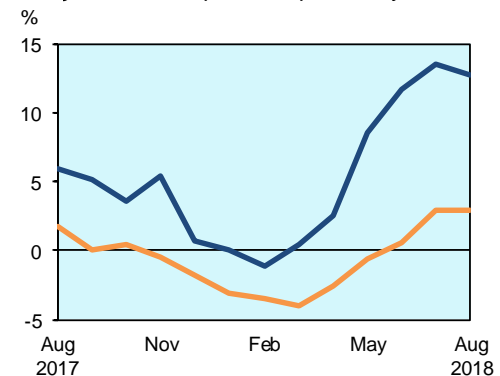
Domestic Supply Price Index (2012=100) — Overall — Non-oil



Change over previous month %



Change over same period of previous year %



## TECHNICAL NOTE

The *Singapore Manufactured Products Price Index (SMPPPI)* monitors price changes of locally manufactured commodities. The weights of the index are derived from the distribution of local production by commodity in 2011. Ex-factory prices are obtained from principal manufacturers of the items concerned.

The *Domestic Supply Price Index (DSPI)* is designed to measure the changes in the price level of goods manufactured locally or imported which are retained for use in the domestic economy by the government, business or household sectors. For imported products, the prices refer to those paid by importers in bringing the goods into Singapore, commonly referred to as c.i.f. prices. In the case of Singapore manufactured products, the quotations used are ex-factory prices. The weight for each commodity item is proportional to the value of its total supply or availability in the domestic market in 2011.

### Index Formula

The 2012-based series is compiled using the 'modified Laspeyres' formula where the weight reference period of 2011 preceded the price reference period of 2012. The geometric mean (GM) formula has been adopted in the computation of unweighted elementary aggregate price indices. The arithmetic mean (AM) formula is applied in compiling indices at higher levels of aggregation where weights of specific sub-indices are available.

An Information Paper on the Rebasement of Singapore Manufactured Products and Domestic Supply Price Indices (2012=100) is available on the department's website at <https://www.singstat.gov.sg/ppi#Producer-and-International-Trade-Prices>.

### Measurement of Changes in Price Indices

*Change over previous month* compares the index of the month with that of the preceding month. Such comparisons measure the change in the price index between two consecutive months. They serve as useful short-term indicators of the price movements. As the price indices are found not to be seasonal, it is not necessary for seasonal adjustment to be carried out.

*Change over same period of previous year* measures change in the index over a twelve-month period. Such comparisons compare the movement in the price index between similar months in two consecutive years.

### Index Revision

The indices may be revised when late returns and amendments received from respondents are incorporated.

### Dissemination of Data

The Singapore Manufactured Products and Domestic Supply Price Indices are available on the SingStat Website ([www.singstat.gov.sg/tablebuilder](http://www.singstat.gov.sg/tablebuilder)). Excel tables for this month's report are available at <https://www.singstat.gov.sg/publications/economy/producer-price-indices> or through the QR code below:



**Table 1 Singapore Manufactured Products Price Index**

**August 2018**

Commodity section / division	Weights	Index (2012=100)			% Change		
		Jun 2018	Jul 2018	Aug 2018	Jul 2018	Aug 2018	Aug 2018
					Jun 2018	Jul 2018	Aug 2017
<b>All Items</b>	<b>10,000</b>	<b>88.1</b>	<b>89.6</b>	<b>89.8</b>	<b>1.7</b>	<b>0.2</b>	<b>9.9</b>
<b>Non-oil Items</b>	<b>7,782</b>	<b>92.3</b>	<b>94.0</b>	<b>93.9</b>	<b>1.8</b>	<b>-0.1</b>	<b>5.4</b>
Food & Live Animals	266	102.9	103.5	103.9	0.6	0.3	2.3
Meat & meat preparations	22	100.1	99.4	98.5	-0.7	-0.8	-1.9
Dairy products & birds' eggs	58	95.3	96.4	96.5	1.1	0.1	0.5
Fish seafood & preparations	7	115.9	116.2	116.2	0.2	-	-2.7
Cereals & cereal preparations	44	109.6	110.2	110.2	0.5	-	1.1
Vegetables & fruit	4	104.3	104.3	104.3	-	-	-
Sugar, sugar preparations & honey	2	106.2	101.9	102.9	-4.0	0.9	4.0
Coffee, tea, cocoa, spices & manufactures	31	103.8	101.4	104.1	-2.3	2.6	8.1
Animal feeding stuff (excl unmilled cereals)	9	104.5	104.3	104.3	-0.2	-	2.5
Miscellaneous food preparations	89	103.6	105.6	105.9	2.0	0.2	3.5
Beverages & Tobacco	54	99.0	99.2	99.2	0.2	-	1.6
Beverages	27	96.0	96.3	96.3	0.3	-	-0.1
Tobacco & manufactures	27	101.9	102.1	102.0	0.2	-	3.2
Crude Materials (excl fuels)	7	114.8	114.6	114.5	-0.2	-0.1	4.8
Cork & wood	1	125.7	125.7	125.7	-	-	1.2
Crude fertilizers & minerals	3	130.4	129.9	129.7	-0.4	-0.2	9.6
Metalliferous ores & metal scrap	3	98.1	98.1	98.1	-	-	-
Mineral Fuels, Lubricants & Related Materials	2,218	73.3	74.3	75.3	1.4	1.3	35.2
Petroleum & products & related materials	2,187	73.4	74.4	75.3	1.4	1.3	35.1
Gas	31	68.3	69.6	72.9	1.9	4.7	42.9
Animal & Vegetable Oils, Fats & Waxes	28	83.3	80.5	81.8	-3.4	1.6	-16.8
Fixed vegetable fats & oils	16	95.8	91.3	92.7	-4.7	1.5	-22.7
Animal & vegetable oils, fats & waxes nes	12	66.9	66.4	67.6	-0.8	1.8	-3.9
Chemicals & Chemical Products	2,335	99.0	102.6	100.2	3.6	-2.3	11.7
Organic chemicals	1,402	101.6	106.7	102.8	5.0	-3.7	17.7
Inorganic chemicals	56	84.4	85.0	84.6	0.7	-0.4	-0.3
Dyeing, tanning & colouring materials	33	92.0	93.0	93.1	1.2	0.1	1.3
Medicinal & pharmaceutical products	157	100.0	100.4	100.6	0.5	0.2	0.2
Essential oils & perfume; toilet cleaning products	64	110.5	110.6	110.9	0.2	0.2	2.8
Plastics in primary forms	323	99.1	101.6	101.9	2.5	0.3	17.9
Plastics in non-primary forms	38	92.0	92.0	92.0	-	-	-4.2
Chemical materials & products nes	262	86.1	87.5	86.9	1.6	-0.6	-9.4
Manufactured Goods	439	98.5	98.2	98.2	-0.2	-0.1	2.8
Leather manufactures nes	5	140.8	140.8	140.8	-	-	5.2
Rubber manufactures nes	18	113.0	113.6	113.9	0.6	0.2	6.7
Wood & cork manufactures (excl furniture)	8	103.8	103.8	103.8	-	-	-
Paper manufactures	44	99.1	99.9	100.0	0.8	0.1	-0.4
Textile manufactures	10	104.3	104.3	104.3	-	-	-
Non-metal mineral manufactures nes	77	97.2	97.4	97.4	0.2	0.1	1.5
Iron & steel	63	77.9	78.3	79.4	0.5	1.3	13.4
Non-ferrous metals	31	106.6	105.4	105.1	-1.1	-0.3	4.5
Manufactures of metals nes	183	101.6	100.8	100.3	-0.8	-0.5	1.1
Machinery & Transport Equipment	3,900	86.0	87.0	88.1	1.2	1.3	2.8
Power-generating machinery & equipment	33	96.0	95.8	95.9	-0.2	0.2	7.1
Machinery specialized for particular industries	376	91.2	90.5	90.6	-0.8	0.1	1.2
Metal working machinery	21	96.5	96.5	96.5	-	-	-
General industrial machinery	167	99.1	98.3	98.4	-0.8	0.1	-2.0
Office machines & data-processing machines	1,143	77.1	77.7	78.3	0.8	0.8	-
Telecommunication apparatus	49	98.4	98.0	98.1	-0.4	0.1	-1.4
Electrical machinery apparatus nes, electrical parts	2,076	87.8	89.6	91.3	2.0	2.0	5.0
Road vehicles	35	116.7	117.3	115.7	0.6	-1.3	-0.1
Miscellaneous Manufactured Articles	753	96.9	97.5	98.2	0.6	0.7	3.5
Furniture, bedding, mattresses, cushions & others	31	117.5	117.5	117.5	-	-	-0.6
Travel goods, handbags & similar containers	1	112.7	113.5	113.6	0.7	0.1	-1.4
Articles of apparel & clothing accessories	27	94.5	94.8	94.9	0.3	0.1	-0.1
Professional scientific & controlling instruments	327	91.4	93.1	94.0	1.9	0.9	1.0
Photographic & optical goods nes; watches & clocks	21	79.6	79.1	79.1	-0.5	-0.1	-3.0
Miscellaneous manufactured articles nes	346	101.5	101.1	101.8	-0.4	0.7	7.0

**Table 2 Domestic Supply Price Index**

**August 2018**

Commodity section / division	Weights	Index (2012=100)			% Change		
		Jun 2018	Jul 2018	Aug 2018	Jul 2018	Aug 2018	Aug 2018
					Jun 2018	Jul 2018	Aug 2017
<b>All Items</b>	<b>10,000</b>	<b>86.0</b>	<b>86.9</b>	<b>87.2</b>	<b>1.1</b>	<b>0.3</b>	<b>12.7</b>
<b>Non-oil Items</b>	<b>6,300</b>	<b>93.9</b>	<b>94.8</b>	<b>95.1</b>	<b>1.0</b>	<b>0.3</b>	<b>3.0</b>
Food & Live Animals	327	99.9	101.2	101.6	1.3	0.4	0.5
Live animals	14	92.7	97.3	91.7	5.0	-5.8	-5.7
Meat & meat preparations	44	100.5	100.3	99.1	-0.2	-1.2	-6.0
Dairy products & birds' eggs	72	93.9	96.1	98.5	2.4	2.5	2.5
Fish seafood & preparations	23	111.5	111.4	111.8	-	0.3	0.8
Cereals & cereal preparations	49	107.2	108.4	108.3	1.1	-0.1	7.1
Vegetables & fruit	26	103.9	106.0	109.0	2.0	2.9	-0.4
Sugar, sugar preparations & honey	13	77.6	80.3	80.7	3.5	0.4	-10.0
Coffee, tea, cocoa, spices & manufactures	27	94.7	94.7	94.6	-	-0.1	-2.3
Animal feeding stuff (excl unmilled cereals)	4	107.4	108.6	108.4	1.1	-0.1	2.1
Miscellaneous food preparations	55	103.3	104.2	104.3	0.8	0.1	2.9
Beverages & Tobacco	44	100.8	101.5	101.5	0.7	-	1.3
Beverages	31	98.4	99.2	99.2	0.8	-	0.5
Tobacco & manufactures	13	106.6	107.0	107.0	0.3	-	3.0
Crude Materials (excl fuels)	59	89.1	88.3	87.9	-0.9	-0.4	1.1
Hides, skins & furskins raw	2	85.4	85.6	85.6	0.2	0.1	-3.4
Oil seeds & oleaginous fruits	1	95.6	96.2	96.1	0.7	-0.1	1.2
Crude rubber	2	91.6	97.9	98.4	7.0	0.4	6.4
Cork & wood	5	93.8	91.7	91.8	-2.2	0.1	0.9
Textile fibres & their wastes	1	98.3	98.3	98.4	-	0.1	-6.0
Crude fertilizers & minerals	31	81.2	81.0	80.9	-0.3	-0.1	1.7
Metalliferous ores & metal scrap	11	98.8	95.2	93.3	-3.6	-2.0	0.3
Crude animal & vegetable materials nes	6	106.0	105.7	105.9	-0.3	0.2	0.4
Mineral Fuels, Lubricants & Related Materials	3,700	72.5	73.5	73.7	1.3	0.3	42.5
Petroleum & products & related materials	3,527	71.7	72.8	73.1	1.6	0.4	43.1
Gas	173	90.5	87.4	86.9	-3.5	-0.6	31.9
Animal & Vegetable Oils, Fats & Waxes	44	71.4	69.6	69.3	-2.5	-0.4	-10.1
Fixed vegetable fats & oils	32	72.4	70.1	69.4	-3.1	-1.1	-12.3
Animal & vegetable oils, fats & waxes nes	12	68.6	68.1	69.2	-0.8	1.6	-3.4
Chemicals & Chemical Products	1,181	92.7	93.9	93.6	1.3	-0.4	9.5
Organic chemicals	612	94.3	96.1	95.5	1.9	-0.6	19.2
Inorganic chemicals	64	92.9	90.2	87.5	-2.9	-3.0	2.2
Dyeing, tanning & colouring materials	17	89.0	89.7	89.9	0.8	0.2	0.5
Medicinal & pharmaceutical products	102	79.3	79.6	80.5	0.4	1.2	1.2
Essential oils & perfume; toilet cleaning products	30	98.5	99.6	97.9	1.1	-1.7	1.4
Plastics in primary forms	92	96.3	99.0	99.0	2.8	-	16.5
Plastics in non-primary forms	24	98.1	98.3	98.6	0.2	0.3	-0.4
Chemical materials & products nes	240	91.8	92.7	93.1	1.0	0.4	-5.8
Manufactured Goods	668	96.3	96.5	96.5	0.1	-	4.6
Leather manufactures nes	2	140.8	140.8	140.8	-	-	5.2
Rubber manufactures nes	18	94.9	96.1	96.3	1.2	0.3	0.6
Wood & cork manufactures (excl furniture)	7	104.2	104.2	104.2	-	-	-
Paper manufactures	67	103.0	104.4	104.8	1.3	0.4	6.0
Textile manufactures	11	98.6	99.1	99.5	0.5	0.5	0.6
Non-metal mineral manufactures nes	130	96.0	96.7	96.9	0.8	0.2	2.3
Iron & steel	148	89.5	90.8	91.8	1.5	1.1	13.4
Non-ferrous metals	118	97.1	93.4	91.3	-3.8	-2.3	-1.8
Manufactures of metals nes	167	98.7	99.4	99.6	0.7	0.2	4.4
Machinery & Transport Equipment	3,229	92.6	93.7	94.3	1.2	0.7	1.7
Power-generating machinery & equipment	176	130.5	131.9	132.4	1.1	0.4	4.8
Machinery specialized for particular industries	188	94.6	95.5	95.5	0.9	-	1.9
Metal working machinery	6	100.9	101.1	101.3	0.2	0.2	-
General industrial machinery	149	100.8	100.8	100.4	-	-0.4	-1.7
Office machines & data-processing machines	234	97.7	98.2	98.2	0.5	-	0.1
Telecommunication apparatus	233	66.7	66.7	66.0	-	-1.1	-4.0
Electrical machinery apparatus nes, electrical parts	2,176	90.3	91.8	92.7	1.6	1.1	2.1
Road vehicles	67	113.2	111.9	113.8	-1.1	1.7	3.8
Miscellaneous Manufactured Articles	748	98.1	98.4	98.6	0.4	0.2	-0.2
Prefab building, sanitary plumbing, lighting nes	10	101.5	101.0	100.6	-0.5	-0.4	-
Furniture, bedding, mattresses, cushions & others	51	110.9	110.8	111.9	-	1.0	2.5
Travel goods, handbags & similar containers	22	117.7	118.5	118.6	0.7	0.1	0.6
Articles of apparel & clothing accessories	24	107.2	107.8	107.0	0.6	-0.8	0.5
Footwear	14	106.2	106.2	106.3	-	-	1.1
Professional scientific & controlling instruments	312	98.4	99.8	100.4	1.4	0.6	0.6
Photographic & optical goods nes; watches & clocks	93	94.6	95.2	95.5	0.6	0.3	-
Miscellaneous manufactured articles nes	222	92.5	91.4	90.8	-1.2	-0.7	-2.6

**Table 3 Singapore Manufactured Products Price Index**

Section	All Items	Non-oil Items	Food & Live Animals	Beverages & Tobacco	Crude Materials	Mineral Fuels	Animal & Vegetable Oils, Fats & Waxes	Chemicals & Chemical Products	Manufactured Goods	Machinery & Transport Equipment	Misc. Manufactured Articles
Weights	<b>10,000</b>	<b>7,782</b>	266	54	7	2,218	28	2,335	439	3,900	753
<b>Index (2012=100)</b>											
2014	<b>93.6</b>	<b>94.8</b>	104.9	100.6	104.2	89.6	94.3	99.1	98.9	90.6	96.4
2015	<b>85.0</b>	<b>92.7</b>	103.5	101.4	104.9	58.3	90.1	88.1	98.0	93.7	93.8
2016	<b>80.4</b>	<b>89.8</b>	102.6	101.8	109.0	47.1	95.2	86.4	94.3	89.7	92.8
2017	<b>83.4</b>	<b>90.4</b>	102.5	97.3	108.8	58.9	99.9	90.8	95.9	87.8	94.6
2017											
Aug	<b>81.7</b>	<b>89.1</b>	101.6	97.7	109.3	55.7	98.4	89.8	95.5	85.7	94.8
Sep	<b>82.9</b>	<b>89.5</b>	101.6	97.7	109.3	59.8	97.1	90.4	97.0	85.7	97.0
Oct	<b>83.0</b>	<b>89.4</b>	101.7	96.6	109.1	60.6	97.0	89.2	97.2	86.1	97.1
Nov	<b>83.9</b>	<b>89.5</b>	101.9	96.6	109.2	64.3	96.6	89.6	97.4	86.0	97.0
Dec	<b>84.6</b>	<b>90.2</b>	101.9	96.7	108.9	64.9	95.4	93.5	97.1	85.2	96.9
2018											
Jan	<b>85.7</b>	<b>91.1</b>	102.0	97.8	115.7	66.9	91.6	98.6	97.4	84.1	96.2
Feb	<b>83.7</b>	<b>89.0</b>	102.0	98.4	115.5	64.9	90.6	92.8	97.7	83.3	96.4
Mar	<b>83.3</b>	<b>88.7</b>	102.1	98.1	115.6	64.5	89.5	92.8	97.7	82.6	96.3
Apr	<b>84.8</b>	<b>89.4</b>	102.1	98.9	115.2	68.4	89.8	93.8	97.6	83.5	96.2
May	<b>88.5</b>	<b>92.4</b>	102.6	99.0	115.4	74.8	89.1	101.9	98.0	84.4	97.2
Jun	<b>88.1</b>	<b>92.3</b>	102.9	99.0	114.8	73.3	83.3	99.0	98.5	86.0	96.9
Jul	<b>89.6</b>	<b>94.0</b>	103.5	99.2	114.6	74.3	80.5	102.6	98.2	87.0	97.5
Aug	<b>89.8</b>	<b>93.9</b>	103.9	99.2	114.5	75.3	81.8	100.2	98.2	88.1	98.2
<b>Percentage Change over same period of previous year (%)</b>											
2015	<b>-9.2</b>	<b>-2.2</b>	-1.3	0.8	0.6	-35.0	-4.4	-11.1	-0.9	3.4	-2.6
2016	<b>-5.5</b>	<b>-3.1</b>	-0.9	0.4	3.8	-19.2	5.6	-2.0	-3.8	-4.3	-1.1
2017	<b>3.8</b>	<b>0.7</b>	-0.2	-4.4	-0.1	25.0	5.0	5.1	1.6	-2.2	1.9
2017											
Aug	<b>5.0</b>	<b>2.4</b>	-0.4	-4.4	0.5	22.2	3.8	11.4	2.2	-2.5	3.6
Sep	<b>2.3</b>	<b>-1.0</b>	-0.6	-4.4	0.7	23.9	1.5	1.8	3.8	-4.4	5.0
Oct	<b>2.1</b>	<b>0.2</b>	-1.6	-4.4	0.9	13.0	1.9	4.9	3.6	-3.6	4.7
Nov	<b>2.9</b>	<b>-0.5</b>	-1.4	-4.3	0.9	23.3	-1.5	5.9	3.5	-5.2	3.8
Dec	<b>-0.6</b>	<b>-2.6</b>	-1.8	-4.3	0.7	10.7	-6.2	2.6	2.6	-7.4	3.1
2018											
Jan	<b>-</b>	<b>-2.0</b>	-1.6	0.3	6.4	10.9	-10.2	5.6	2.3	-8.1	2.7
Feb	<b>-1.9</b>	<b>-3.5</b>	-1.6	0.9	6.4	6.5	-10.7	0.1	2.7	-7.9	2.9
Mar	<b>-1.6</b>	<b>-4.2</b>	-1.1	0.6	6.6	12.9	-12.5	-0.6	2.5	-8.9	3.1
Apr	<b>0.7</b>	<b>-2.2</b>	-1.1	1.4	6.4	16.7	-13.2	0.9	2.4	-5.8	2.8
May	<b>6.9</b>	<b>2.3</b>	-0.1	1.4	6.8	32.5	-13.2	13.8	3.2	-4.9	4.4
Jun	<b>7.8</b>	<b>2.8</b>	0.4	1.5	6.5	37.4	-18.2	12.5	3.9	-2.9	4.3
Jul	<b>10.9</b>	<b>6.5</b>	1.5	1.9	4.6	36.0	-20.4	17.9	3.0	0.9	5.7
Aug	<b>9.9</b>	<b>5.4</b>	2.3	1.6	4.8	35.2	-16.8	11.7	2.8	2.8	3.5



**Table 4 Domestic Supply Price Index**

Section	All Items	Non-oil Items	Food & Live Animals	Beverages & Tobacco	Crude Materials	Mineral Fuels	Animal & Vegetable Oils, Fats & Waxes	Chemicals & Chemical Products	Manufactured Goods	Machinery & Transport Equipment	Misc. Manufactured Articles
Weights	10,000	6,300	327	44	59	3,700	44	1,181	668	3,229	748
<b>Index (2012=100)</b>											
2014	94.1	97.2	104.8	101.0	100.5	88.7	84.2	98.8	96.7	95.9	98.0
2015	79.7	95.9	101.7	101.9	96.5	52.1	74.2	86.2	94.8	98.6	98.5
2016	74.1	92.6	99.7	101.5	87.9	42.6	78.0	82.4	89.1	95.1	99.0
2017	79.4	93.6	101.6	99.8	87.1	55.2	79.9	87.0	92.5	94.2	99.6
2017											
Aug	77.4	92.4	101.1	100.2	87.0	51.8	77.2	85.5	92.2	92.8	98.8
Sep	78.6	92.6	101.9	100.2	87.2	54.7	78.1	86.4	92.9	92.6	98.8
Oct	79.5	93.0	101.5	99.6	87.5	56.6	78.0	86.4	93.8	93.2	98.9
Nov	81.0	93.0	101.7	99.5	87.6	60.7	77.0	86.6	94.0	93.1	98.8
Dec	81.0	92.8	101.8	99.4	87.4	60.9	74.0	88.3	93.8	92.4	98.1
2018											
Jan	81.8	92.6	100.4	99.9	88.1	63.3	74.3	90.0	94.0	91.5	97.7
Feb	80.6	92.0	100.3	100.1	88.2	61.2	74.6	88.0	94.3	90.9	97.9
Mar	80.1	91.3	98.8	99.9	88.0	61.2	73.5	87.8	94.3	89.8	97.7
Apr	81.8	91.8	98.8	100.4	88.2	64.8	73.4	88.6	94.6	90.6	97.8
May	85.3	93.1	99.7	100.6	88.7	72.1	73.2	92.3	95.8	91.3	98.3
Jun	86.0	93.9	99.9	100.8	89.1	72.5	71.4	92.7	96.3	92.6	98.1
Jul	86.9	94.8	101.2	101.5	88.3	73.5	69.6	93.9	96.5	93.7	98.4
Aug	87.2	95.1	101.6	101.5	87.9	73.7	69.3	93.6	96.5	94.3	98.6
<b>Percentage Change over same period of previous year (%)</b>											
2015	-15.3	-1.4	-3.0	0.9	-4.0	-41.3	-11.9	-12.8	-2.0	2.9	0.5
2016	-6.9	-3.4	-2.0	-0.4	-8.9	-18.2	5.1	-4.4	-6.0	-3.6	0.5
2017	7.0	1.0	1.9	-1.7	-0.9	29.4	2.4	5.7	3.8	-1.0	0.6
2017											
Aug	5.9	1.7	2.3	-1.0	0.1	21.1	-0.7	7.7	4.7	-0.5	0.5
Sep	5.2	0.1	2.4	-1.1	0.8	23.4	-2.4	3.9	5.3	-2.3	-0.2
Oct	3.6	0.5	0.8	-1.4	0.8	13.5	-0.9	3.7	5.8	-1.4	-0.6
Nov	5.4	-0.5	0.2	-1.6	0.1	25.0	-5.5	4.6	4.2	-2.9	-1.5
Dec	0.7	-1.8	-0.7	-1.8	-0.4	7.8	-13.9	1.2	2.5	-3.5	-2.1
2018											
Jan	0.1	-3.1	-1.9	-0.1	0.7	8.9	-14.5	0.4	1.8	-5.3	-2.8
Feb	-1.1	-3.5	-1.8	0.2	1.0	5.5	-12.9	-2.2	1.9	-5.3	-2.9
Mar	0.5	-4.0	-2.9	-	1.4	13.9	-11.3	-1.6	2.1	-6.5	-2.7
Apr	2.6	-2.5	-2.5	1.1	2.0	17.5	-8.9	0.2	3.1	-4.5	-2.9
May	8.6	-0.6	-1.6	0.9	2.0	36.4	-10.1	7.1	4.4	-3.7	-1.8
Jun	11.7	0.6	-1.3	1.1	2.8	47.6	-9.7	9.8	5.2	-2.5	-1.9
Jul	13.5	2.9	0.1	1.8	1.6	46.5	-10.5	12.7	5.6	0.6	-0.5
Aug	12.7	3.0	0.5	1.3	1.1	42.5	-10.1	9.5	4.6	1.7	-0.2

### **NOTATIONS**

nes            not elsewhere specified  
-                nil or negligible

### **NOTES**

The Singapore Manufactured Products and Domestic Supply Price Indices report contains statistics that are the most recent available at the time of its preparation.

Some statistics, particularly those for the most recent time periods, are provisional and may be subject to revision in later issues.