



Singapore Manufactured Products & Domestic Supply Price Indices August 2021

www.singstat.gov.sg

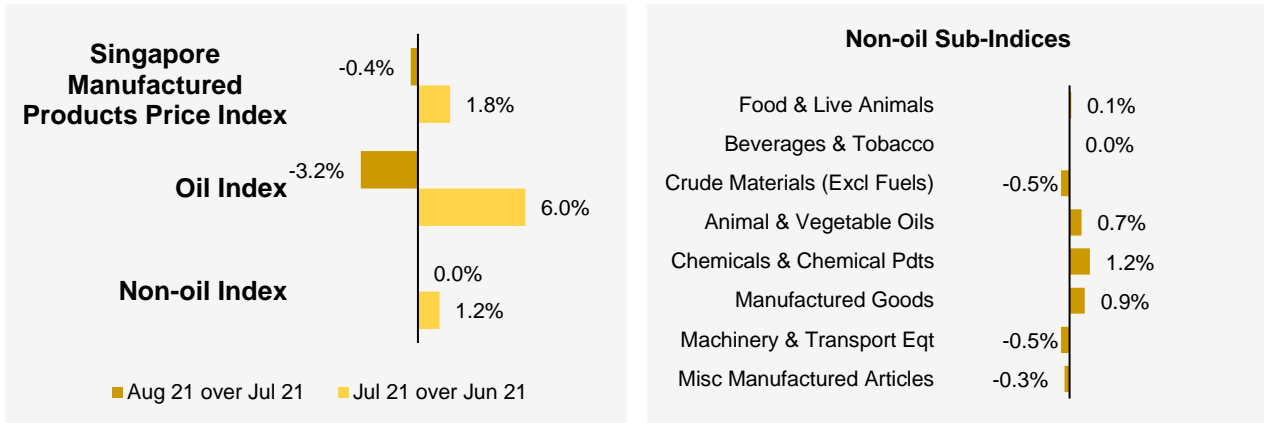
**SINGAPORE MANUFACTURED PRODUCTS &
DOMESTIC SUPPLY PRICE INDICES, August 2021
ISSN 2591-7447**

© Department of Statistics, Ministry of Trade & Industry, Republic of Singapore

Reproducing or quoting any part of this publication is permitted, provided this publication is accredited as the source. Please refer to the SingStat Website Terms of Use (<http://www.singstat.gov.sg/terms-of-use>) for more details on the conditions of use of this publication.

Singapore Manufactured Products Price Index (2018 = 100) August 2021

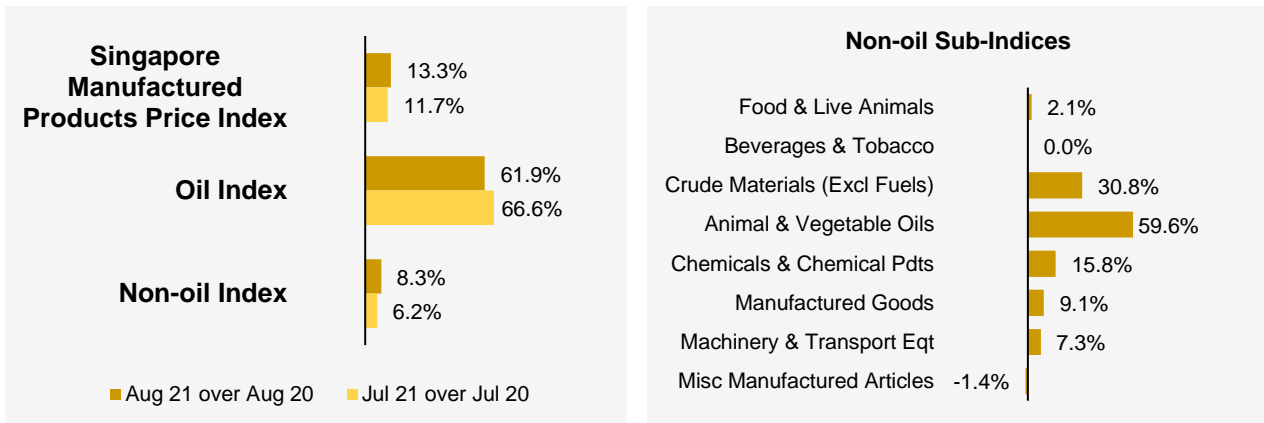
Month-on-Month Change



The Singapore Manufactured Products Price Index fell 0.4% in August 2021, following the 1.8% increase in July 2021. The Oil index dropped 3.2%, in contrast to the 6.0% rise in the previous month. The Non-oil index was unchanged in August 2021 after increasing 1.2% in July 2021.

Among the Non-oil sub-indices, increases were led by the Chemicals & Chemical Products (1.2%) index, due mainly to higher prices of organic chemicals, and the Manufactured Goods (0.9%) index. The increases were partially moderated by decreases led by the Machinery & Transport Equipment (-0.5%) and the Miscellaneous Manufactured Articles (-0.3%) indices.

Year-on-Year Change

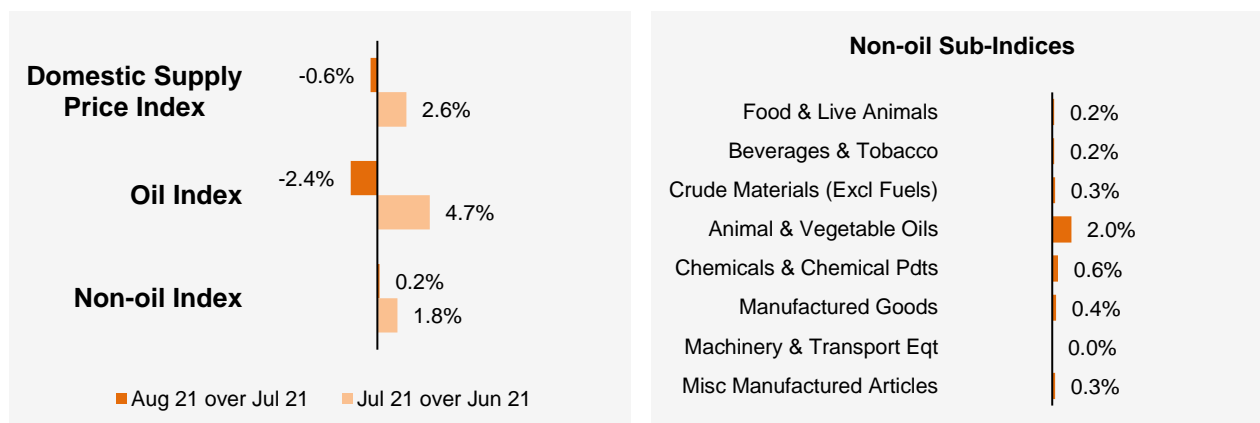


The Singapore Manufactured Products Price Index rose 13.3% in August 2021 from a year ago, extending the 11.7% gain in July 2021. The Oil and Non-oil indices increased 61.9% and 8.3% respectively.

For the Non-oil sub-indices, higher prices of Animal & Vegetable Oils (59.6%), Crude Materials (30.8%), Chemicals & Chemical Products (15.8%), Manufactured Goods (9.1%), Machinery & Transport Equipment (7.3%) and Food & Live Animals (2.1%) were partially offset by lower prices of Miscellaneous Manufactured Articles (-1.4%). Prices of Beverages & Tobacco were unchanged.

Domestic Supply Price Index (2018 = 100) August 2021

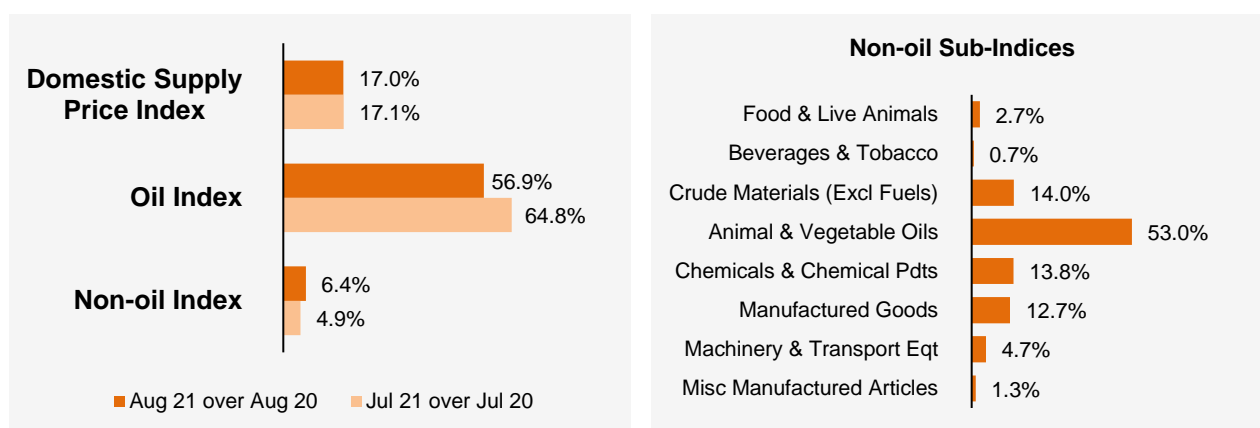
Month-on-Month Change



The Domestic Supply Price Index fell 0.6% in August 2021, following the 2.6% increase in the previous month. The Oil index decreased 2.4%, in contrast to the 4.7% gain in the previous month. The Non-oil index went up 0.2% in August 2021, extending the 1.8% increase in July 2021.

All Non-oil sub-indices rose except for the Machinery & Transport Equipment index which was unchanged. The increases were led by the Chemicals & Chemical Products (0.6%), Manufactured Goods (0.4%) and Miscellaneous Manufactured Articles (0.3%) indices.

Year-on-Year Change



The Domestic Supply Price Index rose 17.0% in August 2021 from a year ago, extending the 17.1% increase in July 2021. The Oil and Non-oil indices grew by 56.9% and 6.4% respectively.

All Non-oil sub-indices rose, registering higher prices of Animal & Vegetable Oils (53.0%), Crude Materials (14.0%), Chemicals & Chemical Products (13.8%), Manufactured Goods (12.7%), Machinery & Transport Equipment (4.7%), Food & Live Animals (2.7%), Miscellaneous Manufactured Articles (1.3%) and Beverages & Tobacco (0.7%).

Technical Note

The **Singapore Manufactured Products Price Index (SMPPI)** monitors price changes of locally manufactured commodities. The weights of the index are derived from the distribution of local production by commodity in 2018. Ex-factory prices are obtained from principal manufacturers of the items concerned.

The **Domestic Supply Price Index (DSPI)** is designed to measure the changes in the price level of goods manufactured locally or imported which are retained for use in the domestic economy by the government, business or household sectors. For imported products, the prices refer to those paid by importers in bringing the goods into Singapore, commonly referred to as c.i.f. prices. In the case of Singapore manufactured products, the quotations used are ex-factory prices. The weight for each commodity item is proportional to the value of its total supply or availability in the domestic market in 2018.

Index Formula

The 2018-based series is compiled using the 'modified Laspeyres' formula where the weight reference period of 2017 preceded the price reference period of 2018. The geometric mean formula has been adopted in the computation of unweighted elementary aggregate price indices. The arithmetic mean formula is applied in compiling indices at higher levels of aggregation where weights of specific sub-indices are available.

Measurement of Changes in Price Indices

Change over previous month compares the index of the month with that of the preceding month. Such comparisons measure the change in the price index between two consecutive months. They serve as useful short-term indicators of the price movements.

Change over same period of previous year measures change in the index over a twelve-month period. Such comparisons compare the movement in the price index between similar months in two consecutive years.

Linking the Old 2012-Based Price Index Series to the New 2018-Based Price Index Series

The SMPPI and DSPI have been rebased from base year 2012 to base year 2018. To facilitate comparison of the historical price indices across base years, the old 2012-based series are linked to the new 2018-based series by re-scaling them via a Linked Coefficient. The Linked Coefficient is the ratio of the annual 2018-based index in 2018 to the annual 2012-based index in 2018.

Example : Linking the old Iron & Steel Index series for SMPPI prior to 2018, to the 2018-based Iron & Steel Index (2018=100)

1) Calculate the linked coefficient

Year	Iron & Steel Index (2012=100)	Iron & Steel Index (2018=100)	Linked Coefficient
2018	78.0	100.0	$100.0 \div 78.0 = 1.282$

2) Re-scaling the old series to the 2018-based series using the Linked Coefficient

Year	Month	Iron & Steel Index (2012=100)	Iron & Steel Index (2018=100)
2016	Dec	70.8	$70.8 \times 1.282 = 90.8$
2017	Jan	71.4	$71.4 \times 1.282 = 91.5$

Linking Method for Maintaining the Old Index Reference Period

To continue the old 2012-based index series going forward in time, re-scale the new 2018-based index series to the old base year 2012 level, via a Linked Coefficient. The Linked Coefficient is the ratio of the annual 2012-based index in 2018 to the annual 2018-based index in 2018.

Example : Linking the new 2018-based Iron & Steel Index series for SMPPI to the 2012-based Iron & Steel Index (2012=100)

1) Calculate the linked coefficient

Year	Iron & Steel Index (2018=100)	Iron & Steel Index (2012=100)	Linked Coefficient
2018	100.0	78.0	$78.0 \div 100.0 = 0.780$

2) Re-scaling the new series to the 2012-based series using the Linked Coefficient

Year	Month	Iron & Steel Index (2018=100)	Iron & Steel Index (2012=100)
2019	Jan	105.6	$105.6 \times 0.780 = 82.4$
2019	Feb	104.7	$104.7 \times 0.780 = 81.7$

Index Revision

The indices may be revised when late returns and amendments received from respondents are incorporated.

Dissemination of Data

The Singapore Manufactured Products and Domestic Supply Price Indices are available on the SingStat Website (www.singstat.gov.sg/tablebuilder). Excel tables for this month's report are available at <https://www.singstat.gov.sg/publications/economy/producer-price-indices> or through the QR code below:



Singapore Manufactured Products Price Index (2018 = 100) August 2021

Chart 1: Index

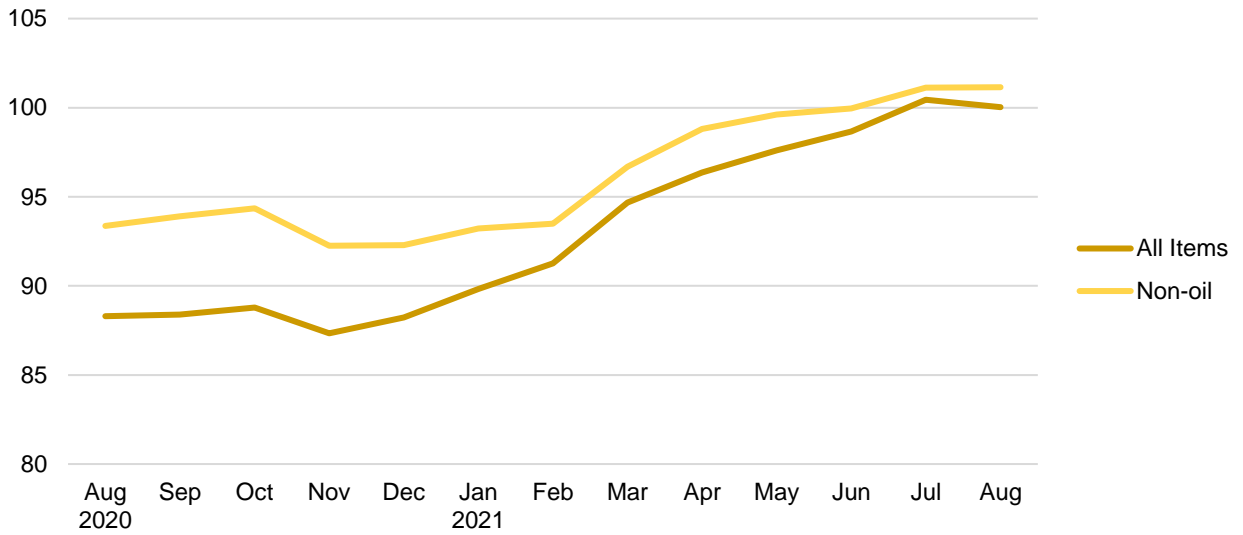


Chart 2: Month-on-Month Change

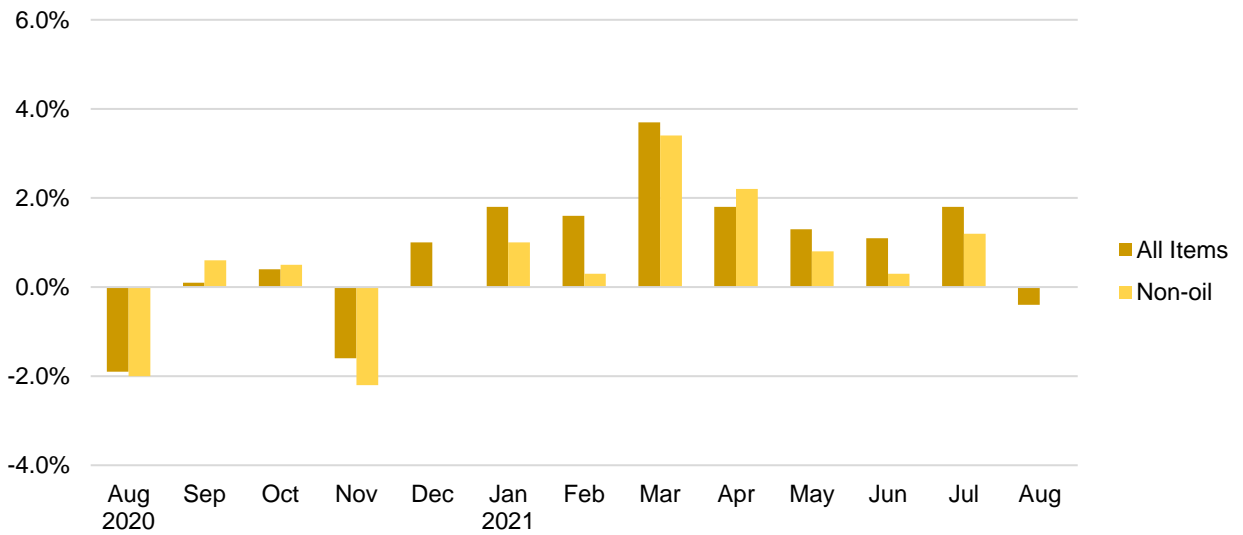
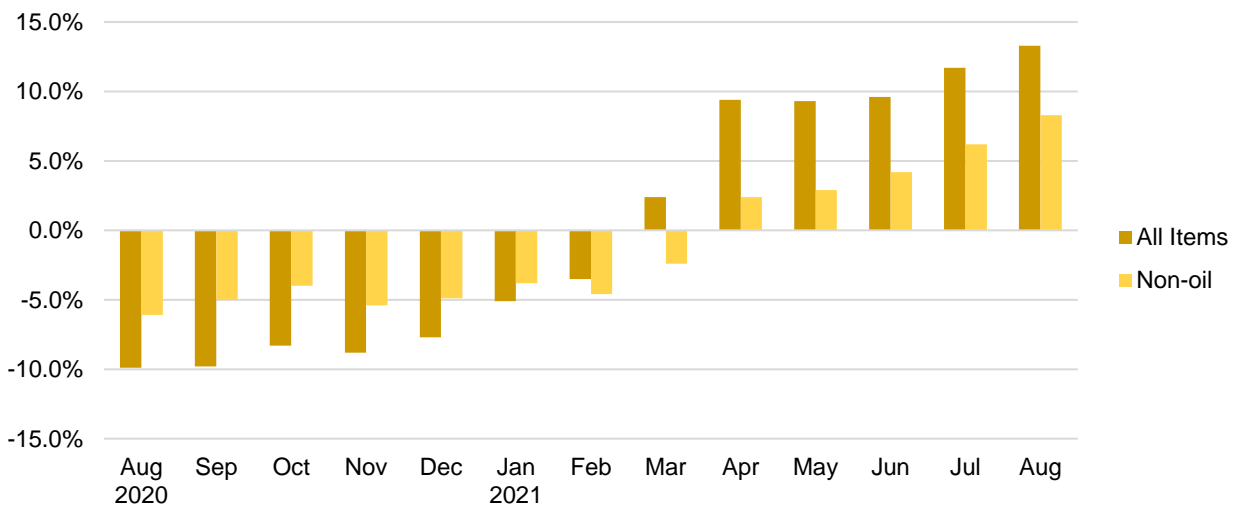


Chart 3: Year-on-Year Change



Domestic Supply Price Index (2018 = 100) August 2021

Chart 4: Index

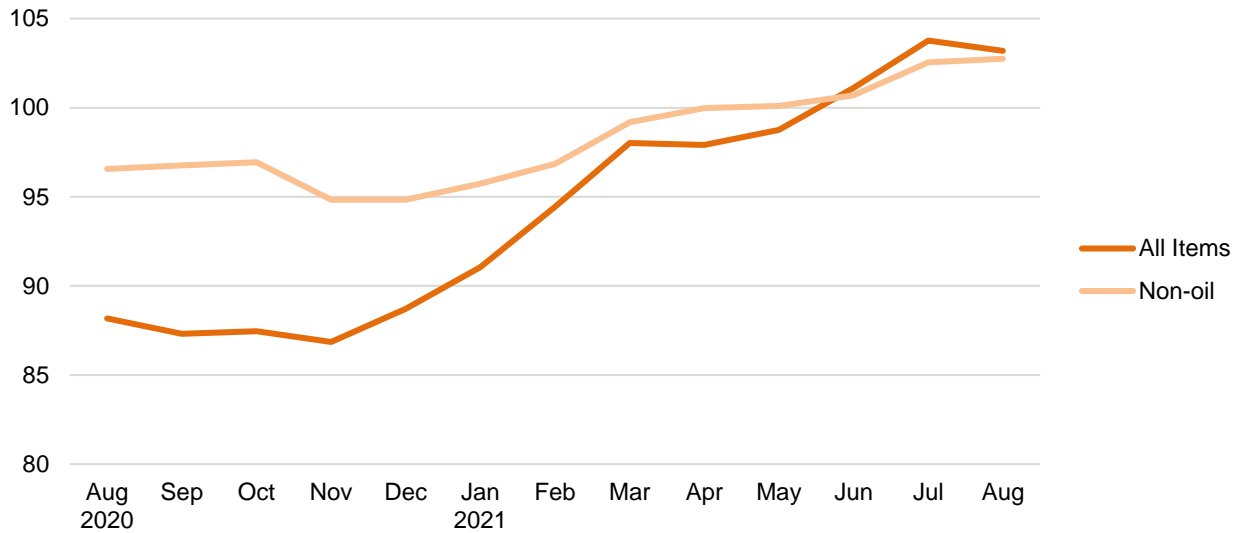


Chart 5: Month-on-Month Change

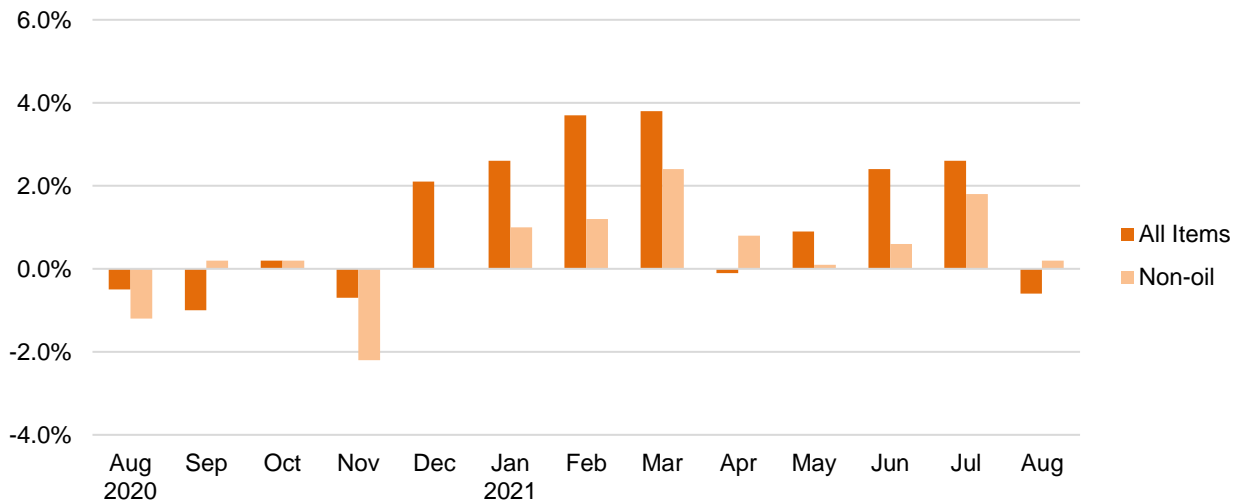


Chart 6: Year-on-Year Change

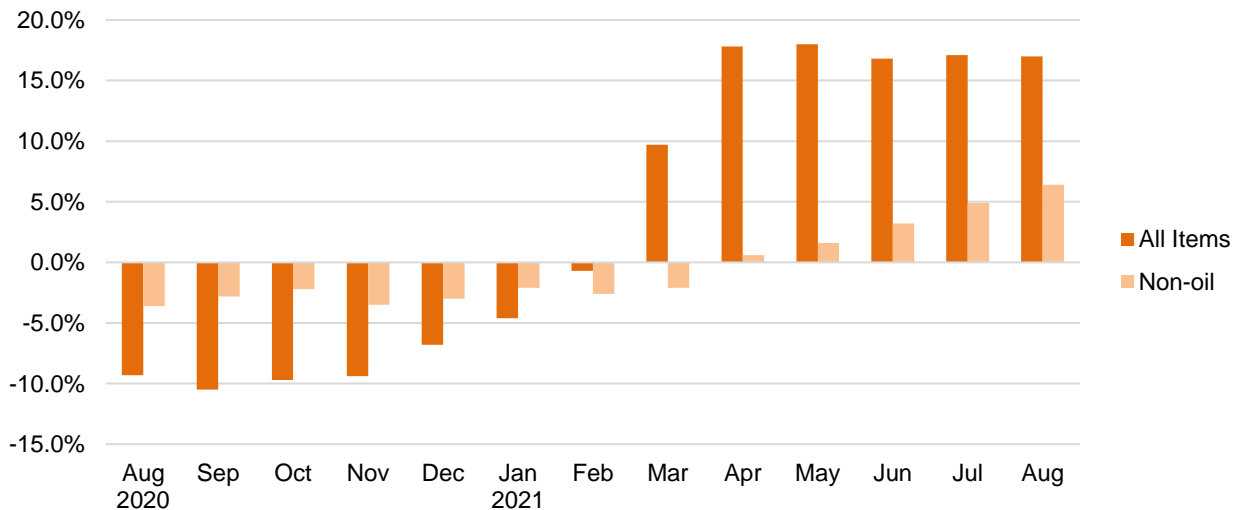


Table 1 Singapore Manufactured Products Price Index

August 2021

Commodity section / division	Weights	Index (2018=100)			% Change		
		Jun 2021	Jul 2021	Aug 2021	Jul 2021	Aug 2021	Aug 2021
					Jun 2021	Jul 2021	Aug 2020
All Items	10,000	98.7	100.4	100.0	1.8	-0.4	13.3
Non-oil Items	8,586	100.0	101.1	101.1	1.2	-	8.3
Food & Live Animals	256	102.5	102.8	102.9	0.3	0.1	2.1
Meat & meat preparations	20	107.9	108.6	108.4	0.6	-0.1	0.8
Dairy products & birds' eggs	15	148.5	153.8	156.5	3.5	1.8	48.7
Fish seafood & preparations	5	95.8	95.8	95.9	-	0.1	0.3
Cereals & cereal preparations	42	104.3	104.3	104.3	-	-	0.1
Vegetables & fruit	3	100.2	100.2	100.2	-	-	0.3
Coffee, tea, cocoa, spices & manufactures	28	95.8	97.5	98.0	1.8	0.4	2.5
Animal feeding stuff (excl unmilled cereals)	6	95.6	101.1	101.8	5.7	0.7	12.7
Miscellaneous food preparations	135	97.9	97.2	96.9	-0.8	-0.2	-3.0
Beverages & Tobacco	31	103.6	103.6	103.6	-	-	-
Beverages	31	103.6	103.6	103.6	-	-	-
Crude Materials (excl fuels)	56	98.8	105.1	104.6	6.4	-0.5	30.8
Crude rubber	50	97.8	104.8	104.4	7.2	-0.4	35.1
Cork & wood	1	102.3	102.3	102.3	-	-	1.4
Crude fertilizers & minerals	2	103.2	103.2	100.2	-	-2.9	-8.0
Metalliferous ores & metal scrap	4	110.1	110.6	110.6	0.4	-	10.2
Mineral Fuels, Lubricants & Related Materials	1,414	90.9	96.3	93.2	6.0	-3.2	61.9
Petroleum & products & related materials	1,386	91.0	96.2	92.9	5.7	-3.4	61.5
Gas	28	85.6	102.1	108.6	19.4	6.4	82.3
Animal & Vegetable Oils, Fats & Waxes	14	134.4	143.2	144.3	6.6	0.7	59.6
Fixed vegetable fats & oils	14	134.4	143.2	144.3	6.6	0.7	59.6
Chemicals & Chemical Products	2,165	94.1	94.6	95.8	0.6	1.2	15.8
Organic chemicals	1,012	89.0	89.7	93.3	0.8	4.1	28.6
Inorganic chemicals	40	86.7	87.6	89.0	1.1	1.6	-14.2
Dyeing, tanning & colouring materials	22	105.7	107.8	110.3	2.0	2.3	8.1
Medicinal & pharmaceutical products	232	92.6	91.5	88.6	-1.1	-3.1	2.1
Essential oils & perfume; toilet cleaning products	133	114.7	116.3	115.8	1.4	-0.4	13.8
Plastics in primary forms	372	99.5	99.8	98.4	0.2	-1.4	15.9
Plastics in non-primary forms	34	109.8	110.7	110.8	0.8	0.1	13.2
Chemical materials & products nes	320	94.7	95.8	95.9	1.1	0.1	0.1
Manufactured Goods	284	112.1	113.5	114.5	1.2	0.9	9.1
Rubber manufactures nes	23	101.6	102.4	102.5	0.8	-	1.2
Wood & cork manufactures (excl furniture)	8	98.8	99.8	99.8	0.9	-	1.6
Paper manufactures	34	100.5	100.8	101.7	0.3	0.9	5.8
Non-metal mineral manufactures nes	45	104.7	106.1	107.5	1.2	1.4	7.5
Iron & steel	53	114.0	117.0	119.7	2.6	2.3	12.6
Non-ferrous metals	20	113.9	113.6	113.2	-0.2	-0.4	18.1
Manufactures of metals nes	99	121.7	123.1	123.6	1.1	0.5	9.6
Machinery & Transport Equipment	4,897	101.8	103.3	102.8	1.5	-0.5	7.3
Power-generating machinery & equipment	8	85.4	85.9	87.0	0.5	1.3	2.3
Machinery specialized for particular industries	571	96.5	99.6	99.5	3.2	-	1.2
Metal working machinery	18	106.9	107.1	106.3	0.1	-0.7	-1.2
General industrial machinery	85	101.5	102.6	102.7	1.1	0.1	0.8
Office machines & data-processing machines	880	114.8	113.1	113.1	-1.5	-	8.0
Telecommunication apparatus	45	92.1	97.3	97.2	5.6	-0.1	1.9
Electrical machinery apparatus nes, electrical parts	3,271	99.4	101.4	100.7	2.1	-0.7	8.6
Road vehicles	20	99.0	100.5	99.8	1.4	-0.7	0.7
Miscellaneous Manufactured Articles	883	98.9	99.6	99.3	0.7	-0.3	-1.4
Furniture, bedding, mattresses, cushions & others	16	101.6	101.6	101.6	-	-	1.4
Travel goods, handbags & similar containers	1	99.1	99.8	100.6	0.7	0.9	1.3
Professional scientific & controlling instruments	516	98.4	98.9	99.1	0.5	0.2	-0.1
Photographic & optical goods nes; watches & clocks	48	96.4	97.1	97.1	0.7	-	-1.6
Miscellaneous manufactured articles nes	303	100.2	101.1	100.0	0.9	-1.1	-3.6

Figures may not sum to total due to rounding.

Table 2 Domestic Supply Price Index

August 2021

Commodity section / division	Weights	Index (2018=100)			% Change		
		Jun 2021	Jul 2021	Aug 2021	Jul 2021	Aug 2021	Aug 2021
					Jun 2021	Jul 2021	Aug 2020
All Items	10,000	101.1	103.8	103.2	2.6	-0.6	17.0
Non-oil Items	7,212	100.7	102.6	102.7	1.8	0.2	6.4
Food & Live Animals	319	105.2	105.8	106.0	0.6	0.2	2.7
Live animals	10	102.1	100.8	101.5	-1.3	0.7	1.4
Meat & meat preparations	56	110.1	110.5	110.4	0.4	-0.2	3.2
Dairy products & birds' eggs	43	115.0	117.0	117.4	1.7	0.3	7.3
Fish seafood & preparations	42	98.3	96.6	96.5	-1.8	-0.1	2.2
Cereals & cereal preparations	51	102.0	101.9	101.7	-0.1	-0.2	-1.3
Vegetables & fruit	40	106.7	110.0	110.1	3.1	0.1	2.7
Sugar, sugar preparations & honey	13	115.5	116.7	117.0	1.0	0.3	15.0
Coffee, tea, cocoa, spices & manufactures	27	100.8	101.9	103.8	1.1	1.8	3.5
Animal feeding stuff (excl unmilled cereals)	3	106.9	107.2	107.1	0.3	-0.1	5.7
Miscellaneous food preparations	35	96.4	96.6	96.8	0.1	0.2	-3.2
Beverages & Tobacco	30	104.4	105.2	105.4	0.8	0.2	0.7
Beverages	28	104.5	105.3	105.5	0.8	0.2	-
Tobacco & manufactures	2	103.0	103.7	103.7	0.7	-0.1	10.5
Crude Materials (excl fuels)	85	103.2	106.3	106.6	3.0	0.3	14.0
Oil seeds & oleaginous fruits	3	117.7	120.9	120.9	2.7	-	6.1
Crude rubber	31	97.3	103.8	103.4	6.7	-0.4	30.8
Cork & w ood	3	99.3	99.3	99.3	-	-	5.3
Crude fertilizers & minerals	34	103.9	105.9	105.9	2.0	-	2.8
Metalliferous ores & metal scrap	5	133.0	130.3	135.5	-2.0	4.0	43.1
Crude animal & vegetable materials nes	10	101.5	101.5	103.0	-	1.5	3.4
Mineral Fuels, Lubricants & Related Materials	2,788	102.2	106.9	104.3	4.7	-2.4	56.9
Petroleum & products & related materials	2,669	103.0	107.6	104.8	4.4	-2.6	56.5
Gas	119	83.2	92.4	94.8	11.0	2.7	66.8
Animal & Vegetable Oils, Fats & Waxes	42	148.0	153.1	156.2	3.5	2.0	53.0
Fixed vegetable fats & oils	42	148.0	153.1	156.2	3.5	2.0	53.0
Chemicals & Chemical Products	1,142	94.9	97.5	98.1	2.7	0.6	13.8
Organic chemicals	459	86.7	91.0	92.0	5.0	1.1	33.5
Inorganic chemicals	54	95.5	95.7	98.3	0.2	2.8	-8.8
Dyeing, tanning & colouring materials	20	108.7	110.3	111.9	1.4	1.5	3.3
Medicinal & pharmaceutical products	95	102.5	102.5	101.3	-	-1.1	1.3
Essential oils & perfume; toilet cleaning products	62	119.3	122.5	121.1	2.7	-1.1	18.9
Plastics in primary forms	158	100.1	101.5	101.9	1.4	0.4	15.8
Plastics in non-primary forms	32	104.5	106.1	106.5	1.6	0.3	4.1
Chemical materials & products nes	263	95.3	97.1	97.8	1.9	0.7	-0.9
Manufactured Goods	490	111.4	113.8	114.3	2.1	0.4	12.7
Rubber manufactures nes	15	98.3	99.0	98.8	0.7	-0.2	-2.9
Wood & cork manufactures (excl furniture)	6	98.9	99.7	99.7	0.8	-	1.5
Paper manufactures	53	99.8	100.5	100.9	0.7	0.4	6.1
Textile manufactures	15	100.1	101.1	100.5	1.0	-0.6	0.2
Non-metal mineral manufactures nes	123	104.7	106.7	106.5	1.9	-0.2	3.9
Iron & steel	110	117.4	121.9	124.1	3.9	1.8	24.0
Non-ferrous metals	80	131.1	133.6	133.7	1.9	0.1	27.8
Manufactures of metals nes	86	107.6	109.4	109.3	1.7	-0.1	6.0
Machinery & Transport Equipment	4,302	99.4	101.2	101.2	1.8	-	4.7
Pow er-generating machinery & equipment	205	113.4	115.2	115.3	1.6	0.1	2.8
Machinery specialized for particular industries	189	97.5	99.3	99.4	1.9	-	-0.5
Metal w orking machinery	6	105.2	105.4	105.5	0.1	0.1	1.1
General industrial machinery	90	98.1	99.1	99.5	1.0	0.5	-1.3
Office machines & data-processing machines	192	95.2	96.6	97.2	1.4	0.6	-2.2
Telecommunication apparatus	53	91.9	89.8	90.0	-2.2	0.2	7.4
Electrical machinery apparatus nes, electrical parts	3,456	99.0	101.0	100.9	2.0	-	5.8
Road vehicles	111	102.0	101.6	101.5	-0.3	-0.1	-0.4
Miscellaneous Manufactured Articles	802	104.5	105.4	105.7	0.9	0.3	1.3
Prefab building, sanitary plumbing, lighting nes	7	105.6	105.6	105.6	-	-	7.5
Furniture, bedding, mattresses, cushions & others	23	107.1	107.5	107.7	0.4	0.2	2.4
Travel goods, handbags & similar containers	39	105.2	105.4	105.4	0.3	-	6.4
Articles of apparel & clothing accessories	25	101.2	101.8	101.8	0.6	-	0.8
Footw ear	14	104.8	105.1	105.1	0.2	-	2.6
Professional scientific & controlling instruments	409	100.2	101.4	101.6	1.2	0.2	0.7
Photographic & optical goods nes; w atches & clocks	75	105.5	107.3	107.2	1.8	-0.1	0.3
Miscellaneous manufactured articles nes	211	112.4	112.7	113.5	0.2	0.7	1.5

Figures may not sum to total due to rounding.

Table 3 Singapore Manufactured Products Price Index

Section	All Items	Non-oil Items	Food & Live Animals	Beverages & Tobacco	Crude Materials	Mineral Fuels	Animal & Vegetable Oils, Fats & Waxes	Chemicals & Chemical Products	Manufactured Goods	Machinery & Transport Equipment	Misc. Manufactured Articles
Weights	10,000	8,586	256	31	56	1,414	14	2,165	284	4,897	883
Index (2018=100)											
2017	95.8	98.6	99.5	98.4	94.7	83.0	119.3	92.5	97.8	103.0	97.2
2018	100.0	100.0	100.0	100.0	100.0	100.0	100.0	100.0	100.0	100.0	100.0
2019	96.7	97.6	99.8	103.5	94.5	91.3	88.5	95.3	102.2	97.8	100.2
2020	90.0	95.4	101.3	103.6	89.2	57.3	95.8	87.3	105.7	97.1	100.6
2020											
Aug	88.3	93.4	100.8	103.6	80.0	57.5	90.4	82.7	104.9	95.8	100.7
Sep	88.4	93.9	100.5	103.6	82.9	54.9	94.5	84.5	104.7	96.0	100.4
Oct	88.8	94.3	100.2	103.6	86.2	55.0	95.4	84.8	105.3	96.7	99.8
Nov	87.3	92.3	100.0	103.6	88.2	57.5	95.7	86.2	105.4	92.4	99.4
Dec	88.2	92.3	101.8	103.6	91.1	63.5	101.5	87.6	105.0	92.0	98.2
2021											
Jan	89.8	93.2	102.0	103.6	96.8	69.2	107.0	88.6	106.8	93.0	97.9
Feb	91.3	93.5	101.6	103.6	98.1	77.8	109.0	87.2	107.1	94.0	98.4
Mar	94.7	96.7	102.0	103.6	98.8	82.5	120.2	91.1	108.0	97.6	99.4
Apr	96.4	98.8	102.4	103.6	98.4	81.5	123.0	94.7	109.6	99.6	99.5
May	97.6	99.6	102.5	103.6	98.6	85.4	127.5	96.7	110.8	100.2	98.8
Jun	98.7	100.0	102.5	103.6	98.8	90.9	134.4	94.1	112.1	101.8	98.9
Jul	100.4	101.1	102.8	103.6	105.1	96.3	143.2	94.6	113.5	103.3	99.6
Aug	100.0	101.1	102.9	103.6	104.6	93.2	144.3	95.8	114.5	102.8	99.3
Percentage Change over same period of previous year (%)											
2018	4.4	1.4	0.5	1.6	5.6	20.5	-16.2	8.1	2.3	-2.9	2.9
2019	-3.3	-2.4	-0.2	3.5	-5.5	-8.7	-11.5	-4.7	2.2	-2.2	0.2
2020	-6.9	-2.2	1.5	0.1	-5.6	-37.2	8.2	-8.3	3.5	-0.7	0.4
2020											
Aug	-9.9	-6.1	1.2	-0.4	-15.1	-35.6	2.5	-13.4	2.9	-4.9	-0.6
Sep	-9.8	-5.0	0.5	-0.4	-12.0	-40.5	9.3	-11.3	1.5	-3.9	-0.7
Oct	-8.3	-4.0	-0.4	-0.4	-8.7	-37.8	9.4	-10.2	1.3	-2.5	-0.6
Nov	-8.8	-5.4	-1.0	-0.4	-6.1	-32.4	9.6	-8.1	0.3	-5.9	-0.2
Dec	-7.7	-4.9	0.6	-0.4	-2.3	-26.9	14.7	-5.2	-0.8	-6.2	-1.1
2021											
Jan	-5.1	-3.8	0.7	-	3.2	-14.4	13.8	-5.1	-0.5	-4.5	-1.0
Feb	-3.5	-4.6	-	-	3.6	5.6	11.7	-5.7	-0.5	-5.4	-1.9
Mar	2.4	-2.4	-0.5	-	3.7	58.5	19.2	1.8	1.3	-4.5	-2.4
Apr	9.4	2.4	0.2	-	6.1	121.8	24.2	10.8	3.7	0.1	-2.8
May	9.3	2.9	0.5	-	7.2	94.5	27.2	10.1	4.5	1.1	-3.2
Jun	9.6	4.2	0.9	-	8.0	66.2	47.7	6.9	6.9	4.4	-2.8
Jul	11.7	6.2	1.6	-	27.9	66.6	61.1	10.4	8.0	5.8	-1.9
Aug	13.3	8.3	2.1	-	30.8	61.9	59.6	15.8	9.1	7.3	-1.4

Table 4 Domestic Supply Price Index

Section	All Items	Non-oil Items	Food & Live Animals	Beverages & Tobacco	Crude Materials	Mineral Fuels	Animal & Vegetable Oils, Fats & Waxes	Chemicals & Chemical Products	Manufactured Goods	Machinery & Transport Equipment	Misc. Manufactured Articles
Weights	10,000	7,212	319	30	85	2,788	42	1,142	490	4,302	802
Index (2018=100)											
2017	94.0	100.2	101.0	98.9	98.8	79.7	114.1	95.5	96.8	102.2	101.3
2018	100.0	100.0	100.0	100.0	100.0	100.0	100.0	100.0	100.0	100.0	100.0
2019	96.7	98.2	101.3	102.1	98.4	93.0	90.9	94.1	101.5	98.2	101.0
2020	88.4	97.6	103.6	104.1	97.2	64.4	103.6	87.7	102.2	98.0	104.0
2020											
Aug	88.2	96.6	103.2	104.6	93.5	66.5	102.1	86.2	101.4	96.7	104.4
Sep	87.3	96.8	102.8	104.9	94.9	62.8	104.2	86.3	101.3	97.1	104.1
Oct	87.4	96.9	102.2	103.4	96.3	62.9	108.2	86.5	101.8	97.4	103.7
Nov	86.9	94.8	102.8	103.4	96.9	66.2	113.1	86.9	102.6	93.6	103.2
Dec	88.7	94.8	103.2	102.2	97.8	72.9	119.6	88.4	102.8	93.2	102.4
2021											
Jan	91.1	95.7	104.4	103.8	99.9	78.9	124.7	89.2	104.0	94.2	102.8
Feb	94.4	96.9	105.4	103.8	100.6	88.2	129.5	90.1	105.7	95.3	103.4
Mar	98.0	99.2	104.3	104.1	102.0	95.0	138.3	93.5	106.7	98.1	103.7
Apr	97.9	100.0	104.1	104.3	102.2	92.6	142.7	95.3	107.6	98.7	104.2
May	98.8	100.1	104.6	104.3	102.6	95.2	150.6	95.5	109.2	98.6	104.3
Jun	101.1	100.7	105.2	104.4	103.2	102.2	148.0	94.9	111.4	99.4	104.5
Jul	103.8	102.6	105.8	105.2	106.3	106.9	153.1	97.5	113.8	101.2	105.4
Aug	103.2	102.7	106.0	105.4	106.6	104.3	156.2	98.1	114.3	101.2	105.7
Percentage Change over same period of previous year (%)											
2018	6.4	-0.2	-1.0	1.1	1.2	25.5	-12.4	4.7	3.3	-2.1	-1.3
2019	-3.3	-1.8	1.3	2.1	-1.6	-7.0	-9.1	-5.9	1.5	-1.8	1.0
2020	-8.7	-0.6	2.2	2.0	-1.1	-30.7	13.9	-6.8	0.7	-0.2	2.9
2020											
Aug	-9.3	-3.6	1.3	1.7	-5.6	-25.9	14.2	-8.6	-	-4.2	1.8
Sep	-10.5	-2.8	0.6	2.0	-3.8	-31.9	16.4	-8.7	-0.8	-2.9	1.6
Oct	-9.7	-2.2	-0.6	1.0	-2.2	-30.8	20.3	-7.6	-0.4	-2.1	1.7
Nov	-9.4	-3.5	0.5	1.1	-1.6	-26.0	20.2	-6.1	0.3	-5.0	1.9
Dec	-6.8	-3.0	0.5	0.1	-0.7	-17.7	20.7	-2.2	0.5	-5.0	1.4
2021											
Jan	-4.6	-2.1	0.8	1.0	1.1	-11.6	20.6	-2.3	2.2	-3.8	1.7
Feb	-0.7	-2.6	1.7	0.1	1.1	5.2	26.3	-2.6	2.6	-4.6	0.8
Mar	9.7	-2.1	0.3	-0.1	1.9	62.2	37.8	3.0	3.5	-4.8	-1.2
Apr	17.8	0.6	-0.9	-0.5	3.6	125.3	45.6	11.2	4.9	-2.1	-1.7
May	18.0	1.6	-0.3	-0.5	4.4	109.5	57.2	12.2	6.8	-1.1	-1.4
Jun	16.8	3.2	1.6	-0.8	5.4	76.1	52.6	9.9	9.5	1.3	-0.3
Jul	17.1	4.9	2.0	0.5	12.7	64.8	55.7	12.7	11.6	2.7	0.7
Aug	17.0	6.4	2.7	0.7	14.0	56.9	53.0	13.8	12.7	4.7	1.3

NOTATIONS

- nes not elsewhere specified
- nil or negligible

NOTES

The Singapore Manufactured Products and Domestic Supply Price Indices report contains statistics that are the most recent available at the time of its preparation.

Some statistics, particularly those for the most recent time periods, are provisional and may be subject to revision in later issues.