



Singapore Manufactured Products & Domestic Supply Price Indices August 2024

www.singstat.gov.sg

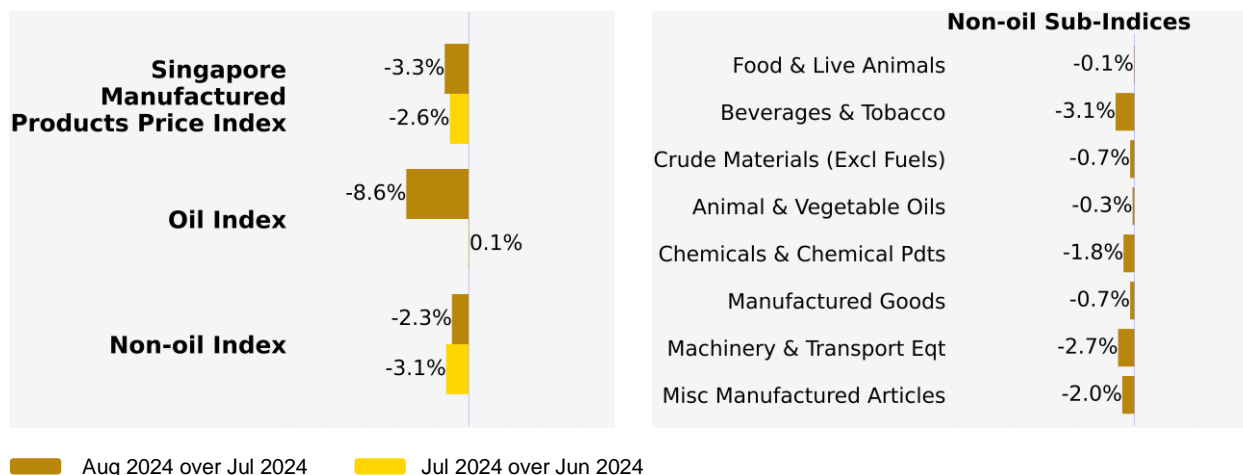
**SINGAPORE MANUFACTURED PRODUCTS &
DOMESTIC SUPPLY PRICE INDICES, August 2024
ISSN 2591-7447**

© Department of Statistics, Ministry of Trade & Industry, Republic of Singapore

Reproducing or quoting any part of this publication is permitted, provided this publication is accredited as the source. Please refer to the SingStat Website Terms of Use (<http://www.singstat.gov.sg/terms-of-use>) for more details on the conditions of use of this publication.

Singapore Manufactured Products Price Index (2023 = 100) August 2024

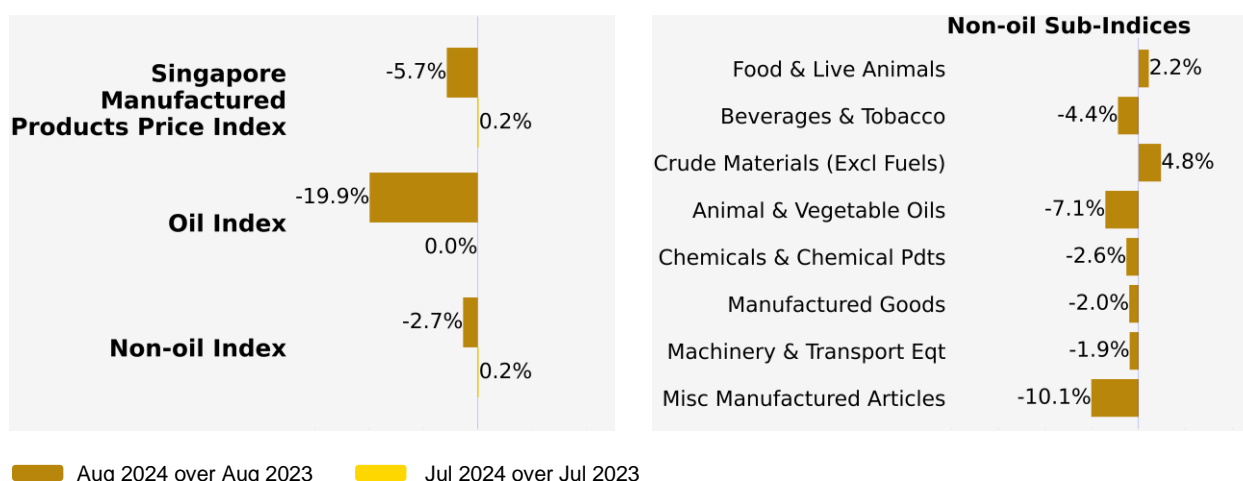
Month-on-Month Change



The Singapore Manufactured Products Price Index fell 3.3% in August 2024, extending the 2.6% decrease in July 2024. The Oil index dropped 8.6%, reversing the 0.1% increase in the previous month. The Non-oil index fell 2.3% in August 2024, after the 3.1% decrease in July 2024.

The decline in the Non-oil index was mainly driven by the Machinery & Transport Equipment index, attributed to lower prices of electrical machinery apparatus, followed by the Chemicals & Chemical Products, Miscellaneous Manufactured Articles, Manufactured Goods, Beverages & Tobacco, Crude Materials, Food & Live Animals, and Animal & Vegetable Oils indices.

Year-on-Year Change

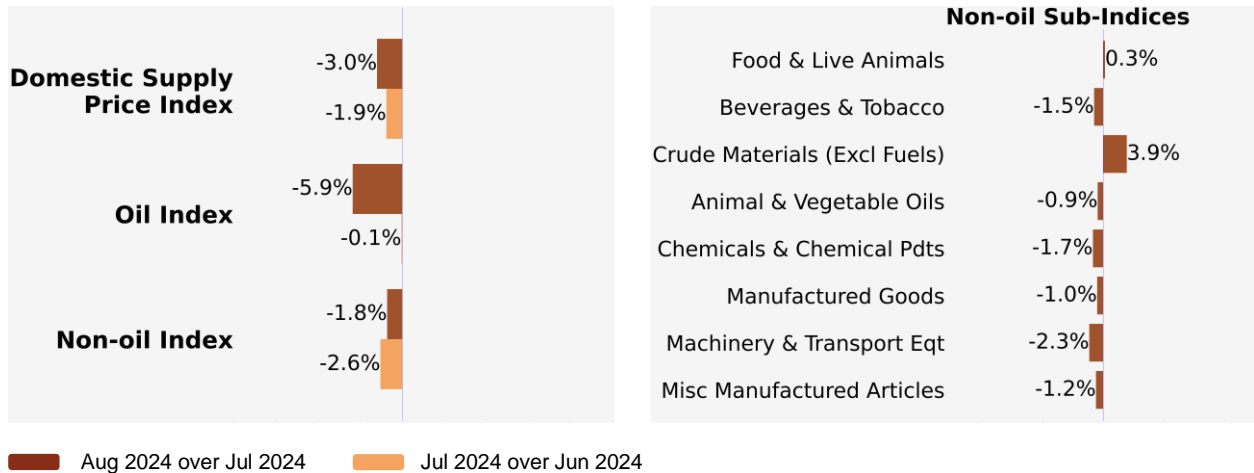


The Singapore Manufactured Products Price Index fell 5.7% in August 2024 from a year ago, reversing the 0.2% increase in July 2024. The Oil and Non-oil indices dipped 19.9% and 2.7% respectively.

Among the Non-oil sub-indices, the decreases were mainly led by the Machinery & Transport Equipment index, due to lower prices of electrical machinery apparatus, followed by the Miscellaneous Manufactured Articles, Chemicals & Chemical Products, Manufactured Goods, Animal & Vegetable Oils, and Beverages & Tobacco indices. The decreases were partially moderated by increases in the Food & Live Animals and Crude Materials indices.

Domestic Supply Price Index (2023 = 100) August 2024

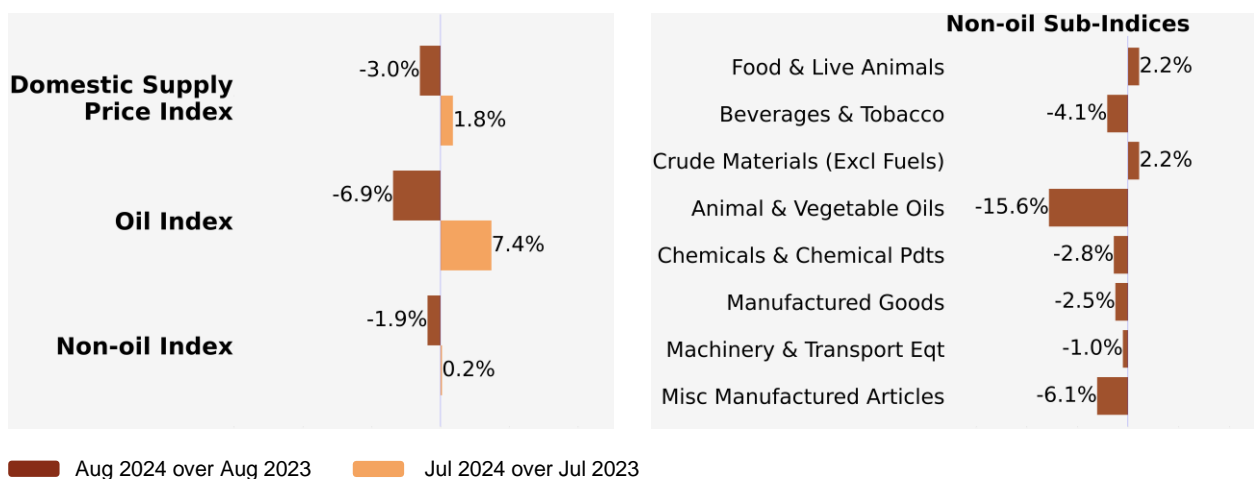
Month-on-Month Change



The Domestic Supply Price Index fell 3.0% in August 2024, following the 1.9% decrease in July 2024. The Oil index dropped 5.9%, continuing the 0.1% decrease in the previous month. The Non-oil index fell 1.8% in August 2024, following the 2.6% decrease in July 2024.

The decrease in the Non-oil index was mainly driven by the Machinery & Transport Equipment index, attributed to lower prices of electrical machinery apparatus, followed by the Chemicals & Chemical Products, Miscellaneous Manufactured Articles, Manufactured Goods, Animal & Vegetable Oils, and Beverages & Tobacco indices. The decreases were partially offset by increases in the Crude Materials and Food & Live Animals indices.

Year-on-Year Change



The Domestic Supply Price Index fell 3.0% in August 2024 from a year ago, in contrast to the 1.8% increase in July 2024. The Oil and Non-oil indices decreased 6.9% and 1.9% respectively.

Among the Non-oil sub-indices, the decreases were mainly led by the Miscellaneous Manufactured Articles index, reflecting lower prices of professional scientific & controlling instruments, followed by the Machinery & Transport Equipment, Chemicals & Chemical Products, Animal & Vegetable Oils, Manufactured Goods, and Beverages & Tobacco indices. The decreases were partially offset by increases in the Food & Live Animals and Crude Materials indices.

Technical Note

The **Singapore Manufactured Products Price Index (SMPPI)** monitors price changes of locally manufactured commodities. The weights of the index are derived from the distribution of local production by commodity in 2023. Ex-factory prices are obtained from principal manufacturers of the items concerned.

The **Domestic Supply Price Index (DSPI)** is designed to measure the changes in the price level of goods manufactured locally or imported which are retained for use in the domestic economy by the government, business or household sectors. For imported products, the prices refer to those paid by importers in bringing the goods into Singapore, commonly referred to as c.i.f. prices. In the case of Singapore manufactured products, the quotations used are ex-factory prices. The weight for each commodity item is proportional to the value of its total supply or availability in the domestic market in 2023.

Index Formula

The 2023-based series is compiled using the 'modified Laspeyres' formula where the weight reference period of 2022 preceded the price reference period of 2023. The geometric mean formula has been adopted in the computation of unweighted elementary aggregate price indices. The arithmetic mean formula is applied in compiling indices at higher levels of aggregation where weights of specific sub-indices are available.

Measurement of Changes in Price Indices

Change over previous month compares the index of the month with that of the preceding month. Such comparisons measure the change in the price index between two consecutive months. They serve as useful short-term indicators of the price movements.

Change over same period of previous year measures change in the index over a twelve-month period. Such comparisons compare the movement in the price index between similar months in two consecutive years.

Linking the Old 2018-Based Price Index Series to the New 2023-Based Price Index Series

The SMPPI and DSPI have been rebased from base year 2018 to base year 2023. To facilitate comparison of the historical price indices across base years, the old 2018-based series are linked to the new 2023-based series by re-scaling them via a Linked Coefficient. The Linked Coefficient is the ratio of the annual 2023-based index in 2023 to the annual 2018-based index in 2023.

Example: Linking the old Iron & Steel Index series for SMPPI prior to 2023, to the 2023-based Iron & Steel Index (2023=100)

1) Calculate the linked coefficient

Year	Iron & Steel Index (2018=100)	Iron & Steel Index (2023=100)	Linked Coefficient
2023	135.6	100.0	$100.0 \div 135.6 = 0.737$

2) Re-scaling the old series to the 2023-based series using the Linked Coefficient

Year	Month	Iron & Steel Index (2018=100)	Iron & Steel Index (2023=100)
2021	Dec	125.6	$125.6 \times 0.737 = 92.6$
2022	Jan	127.2	$127.2 \times 0.737 = 93.7$

Rescaling the 2023-Based Index Series to Previous Years

To continue the old 2018-based index series going forward in time, re-scale the new 2023-based index series to the old base year 2018 level, via a Rescaling Coefficient. The Rescaling Coefficient is the ratio of the annual 2023-based index in 2023 to the annual 2023-based index in 2018.

Example: Rescaling the new 2023-based Iron & Steel Index series for SMPPI to the 2018-based Iron & Steel Index (2018=100)

1) Calculate the rescaling coefficient

Year	Annual Iron & Steel Index in 2023	Annual Iron & Steel Index in 2018	Rescaling Coefficient
2023	100.0	73.7	$100.0 \div 73.7 = 1.357$

2) Re-scaling the new series to the 2018-based series using the Rescaling Coefficient

Year	Month	Iron & Steel Index (2023=100)	Iron & Steel Index (2018=100)
2024	Jan	100.0	$100.0 \times 1.357 = 135.7$
2024	Feb	100.6	$100.6 \times 1.357 = 136.5$

Index Revision

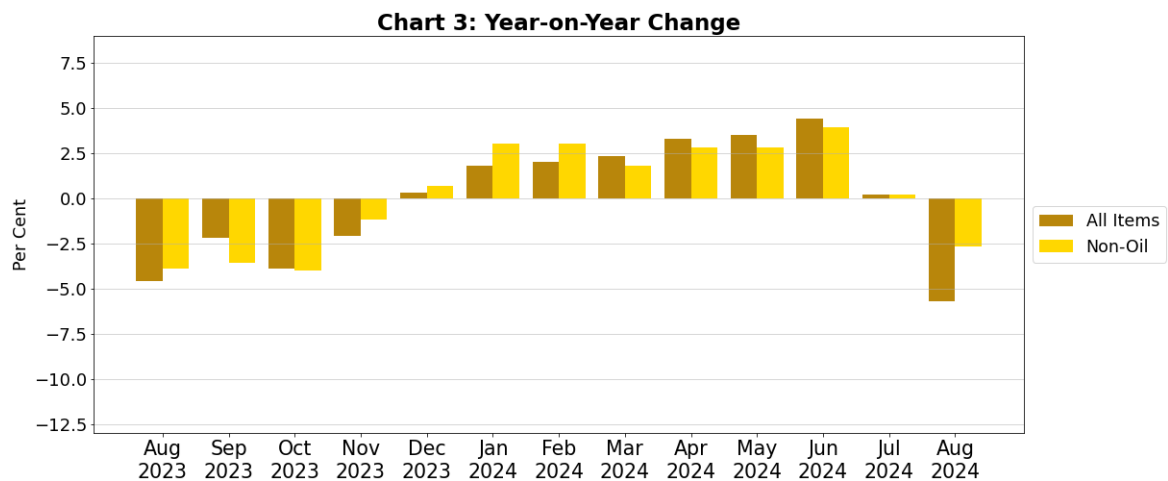
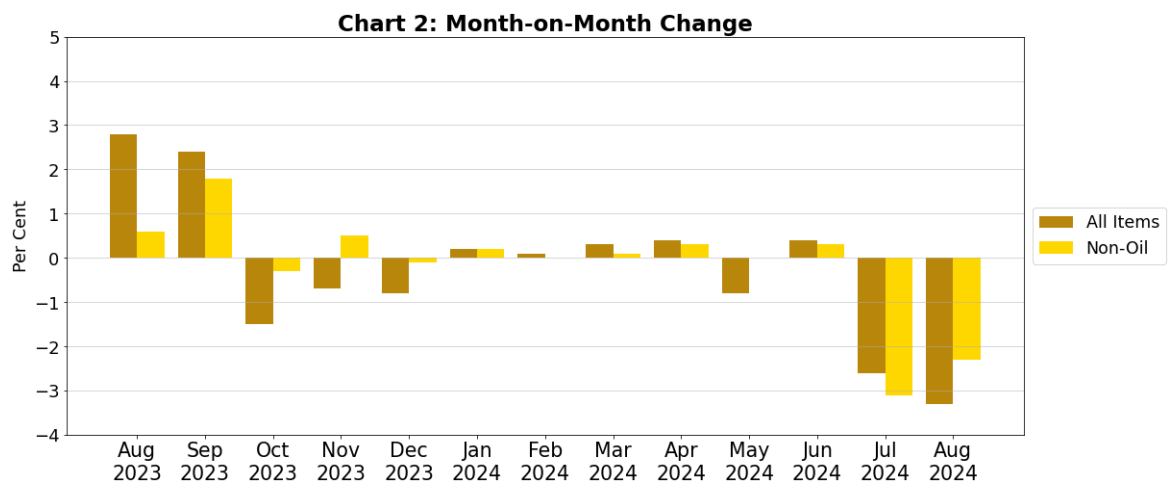
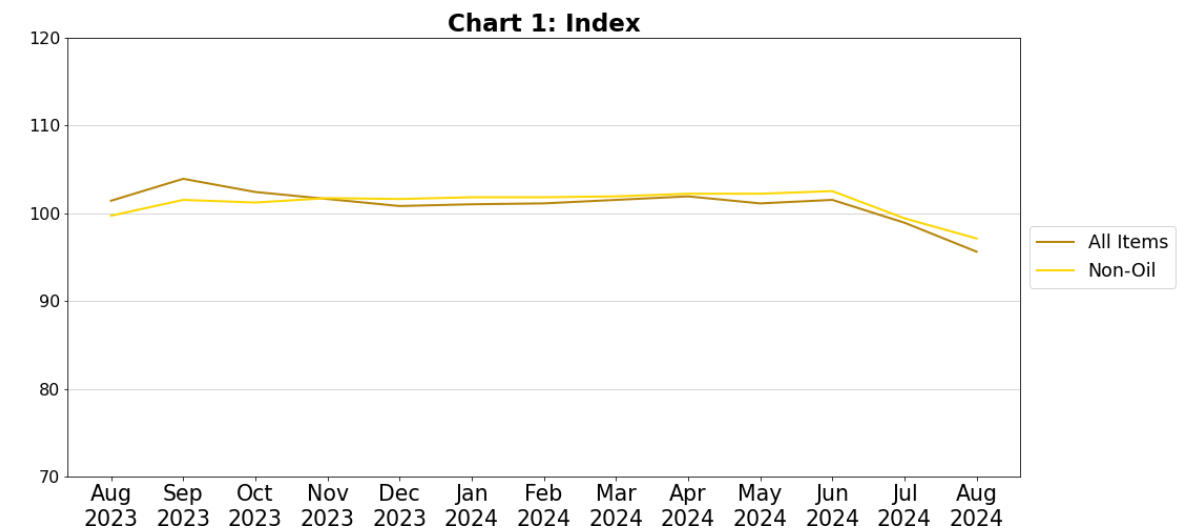
The indices may be revised when late returns and amendments received from respondents are incorporated.

Dissemination of Data

The Singapore Manufactured Products and Domestic Supply Price Indices are available on the SingStat Website (www.singstat.gov.sg/tablebuilder). Excel tables for this month's report are available at <https://www.singstat.gov.sg/publications/economy/producer-price-indices> or through the QR code below:



Singapore Manufactured Products Price Index (2023 = 100) August 2024



Domestic Supply Price Index (2023 = 100)

August 2024

Chart 4: Index

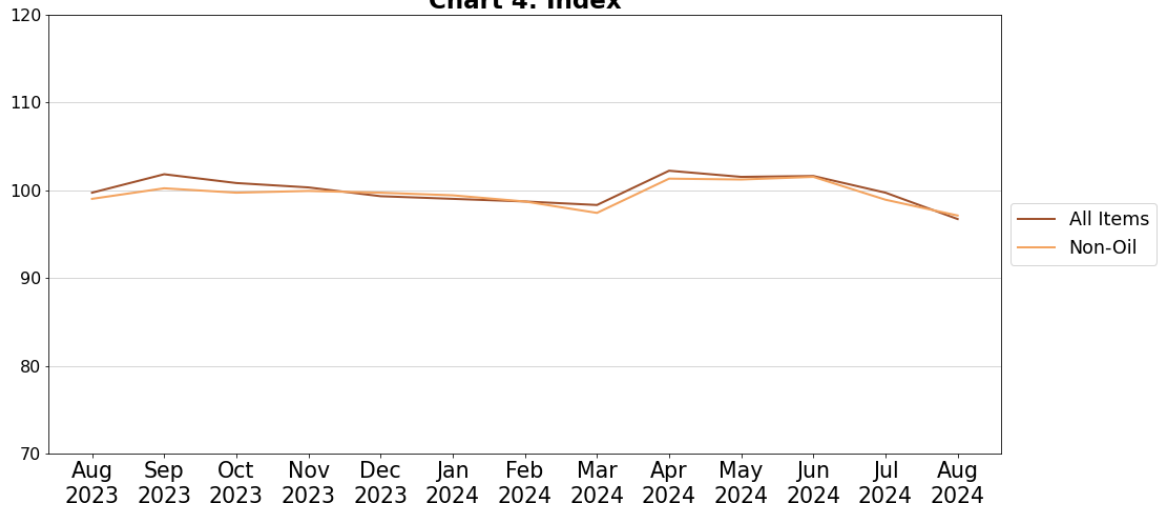


Chart 5: Month-on-Month Change

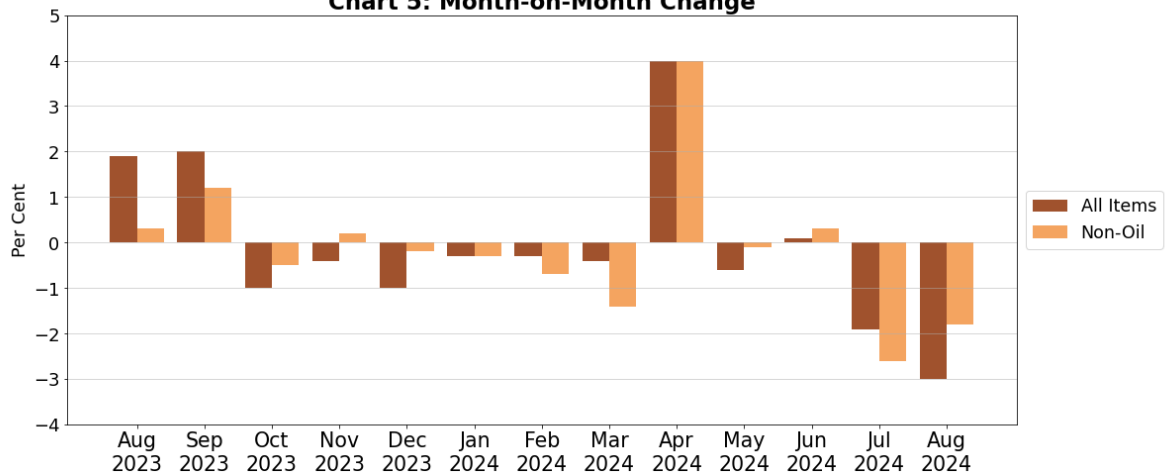


Chart 6: Year-on-Year Change

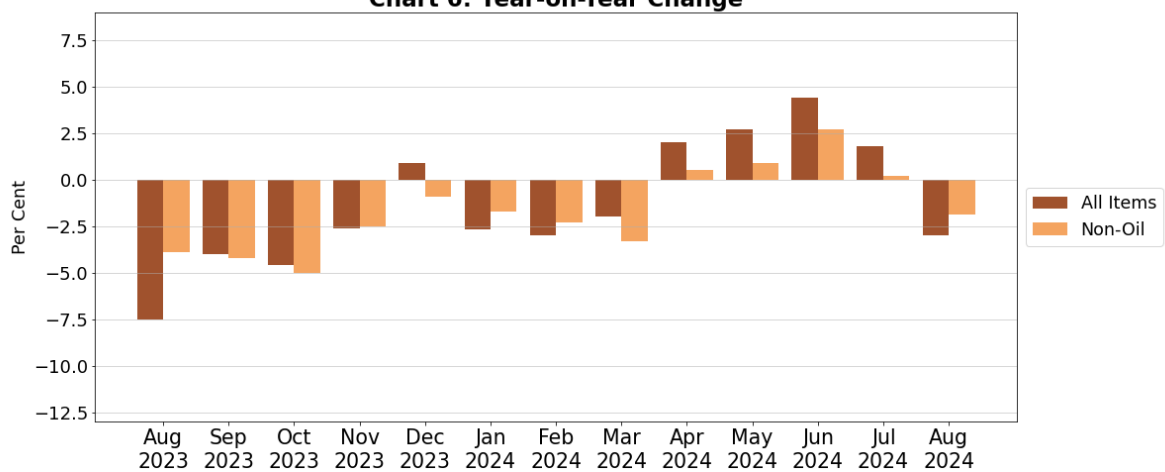


Table 1 Singapore Manufactured Products Price Index

August 2024

Commodity section / division	Weights	Index (2023=100)			% Change		
		Jun 2024	Jul 2024	Aug 2024	Jul 2024	Aug 2024	Aug 2024
					Jun 2024	Jul 2024	Aug 2023
All Items	10,000	101.5	98.9	95.6	-2.6	-3.3	-5.7
Non-oil Items	8,369	102.5	99.4	97.1	-3.1	-2.3	-2.7
Food & Live Animals	220	104.5	102.6	102.5	-1.9	-0.1	2.2
Meat & meat preparations	22	98.8	98.8	98.8	-	-	-2.7
Dairy products & birds' eggs	11	108.5	106.9	106.4	-1.5	-0.5	7.1
Fish seafood & preparations	8	104.2	104.2	104.2	-	-	0.8
Cereals & cereal preparations	34	101.0	101.0	101.0	-	-	1.0
Vegetables & fruit	2	100.0	100.0	100.0	-	-	-
Coffee, tea, cocoa, spices & manufactures	17	137.2	137.8	137.6	0.4	-0.1	37.3
Animal feeding stuff (excl unmilled cereals)	9	93.3	93.1	92.5	-0.2	-0.7	-5.9
Miscellaneous food preparations	116	102.5	98.9	98.8	-3.5	-0.1	-1.4
Beverages & Tobacco	14	98.5	98.5	95.4	-	-3.1	-4.4
Beverages	14	98.5	98.5	95.4	-	-3.1	-4.4
Crude Materials (excl fuels)	40	102.2	104.4	103.6	2.1	-0.7	4.8
Crude rubber	34	101.7	104.3	103.8	2.5	-0.5	5.4
Cork & wood	2	102.3	102.3	102.3	-	-	1.3
Crude fertilizers & minerals	2	99.8	99.8	99.8	-	-	-0.4
Metalliferous ores & metal scrap	3	109.4	108.8	104.9	-0.5	-3.6	3.0
Mineral Fuels, Lubricants & Related Materials	1,631	96.5	96.6	88.3	0.1	-8.6	-19.9
Petroleum & products & related materials	1,617	96.4	96.5	88.2	0.2	-8.7	-20.1
Gas	14	108.5	100.8	98.5	-7.1	-2.3	7.4
Animal & Vegetable Oils, Fats & Waxes	9	95.0	94.4	94.2	-0.5	-0.3	-7.1
Fixed vegetable fats & oils	9	95.0	94.4	94.2	-0.5	-0.3	-7.1
Chemicals & Chemical Products	1,795	98.7	98.3	96.6	-0.3	-1.8	-2.6
Organic chemicals	767	101.1	101.4	99.0	0.2	-2.3	0.1
Inorganic chemicals	45	99.8	100.1	100.9	0.3	0.8	-3.4
Dyeing, tanning & colouring materials	15	100.0	101.6	100.1	1.6	-1.5	-2.2
Medicinal & pharmaceutical products	253	101.5	101.7	100.9	0.2	-0.7	1.3
Essential oils & perfume; toilet cleaning products	141	99.3	99.0	98.7	-0.3	-0.3	-1.8
Plastics in primary forms	272	98.0	98.6	95.4	0.6	-3.2	-1.9
Plastics in non-primary forms	18	100.1	100.1	100.1	-	-	-0.3
Chemical materials & products nes	284	89.4	86.1	85.2	-3.7	-1.1	-14.5
Manufactured Goods	255	98.7	98.8	98.1	0.1	-0.7	-2.0
Rubber manufactures nes	11	102.6	104.5	102.9	1.8	-1.5	5.7
Wood & cork manufactures (excl furniture)	7	89.0	87.9	87.7	-1.3	-0.2	-11.1
Paper manufactures	31	95.6	95.6	95.6	-	-	-3.4
Textile Yarn Fabrics Made-Up Articles Nes	7	103.8	102.0	100.3	-1.7	-1.7	0.7
Non-metal mineral manufactures nes	45	96.7	96.6	96.7	-0.1	0.1	-3.4
Iron & steel	48	100.6	100.3	98.3	-0.3	-2.0	-2.5
Non-ferrous metals	17	101.8	103.1	101.2	1.3	-1.8	-0.8
Manufactures of metals nes	88	99.2	99.4	99.0	0.2	-0.4	-1.2
Machinery & Transport Equipment	5,266	105.3	100.6	97.8	-4.5	-2.7	-1.9
Machinery specialized for particular industries	661	98.9	98.3	97.4	-0.6	-0.9	-2.9
Metal working machinery	17	99.8	99.4	97.1	-0.3	-2.3	-3.5
General industrial machinery	65	103.2	102.9	102.0	-0.3	-1.0	0.5
Office machines & data-processing machines	589	101.8	98.1	99.5	-3.6	1.4	-5.4
Telecommunication apparatus	79	102.5	102.3	100.1	-0.3	-2.1	-2.6
Electrical machinery apparatus nes, electrical parts	3,856	107.1	101.3	97.6	-5.5	-3.6	-1.1
Miscellaneous Manufactured Articles	772	92.9	92.7	90.9	-0.2	-2.0	-10.1
Furniture, bedding, mattresses, cushions & others	16	102.9	103.0	103.8	0.1	0.8	2.5
Travel goods, handbags & similar containers	0	100.0	100.0	100.0	-	-	-
Professional scientific & controlling instruments	455	88.7	88.2	85.3	-0.5	-3.4	-16.6
Photographic & optical goods nes; watches & clocks	42	98.7	98.8	96.8	0.1	-2.0	-3.7
Miscellaneous manufactured articles nes	259	98.7	98.9	98.9	0.1	0.1	-0.2

Figures may not sum to total due to rounding.

Table 2 Domestic Supply Price Index

August 2024

Commodity section / division	Weights	Index (2023=100)			% Change		
		Jun 2024	Jul 2024	Aug 2024	Jul 2024	Aug 2024	Aug 2024
					Jun 2024	Jul 2024	Aug 2023
All Items	10,000	101.6	99.7	96.7	-1.9	-3.0	-3.0
Non-oil Items	7,196	101.5	98.9	97.1	-2.6	-1.8	-1.9
Food & Live Animals	274	102.1	102.8	103.1	0.7	0.3	2.2
Live animals	6	88.3	83.9	83.2	-5.1	-0.8	-16.4
Meat & meat preparations	45	101.1	101.2	101.2	0.1	-	0.1
Dairy products & birds' eggs	34	98.3	98.3	97.9	-	-0.4	-2.2
Fish seafood & preparations	30	99.1	98.2	97.9	-1.0	-0.3	-1.1
Cereals & cereal preparations	42	99.8	100.2	100.0	0.4	-0.2	-0.1
Vegetables & fruit	37	98.0	100.2	97.8	2.3	-2.4	-1.8
Sugar, sugar preparations & honey	7	104.7	104.4	100.9	-0.2	-3.4	-5.9
Coffee, tea, cocoa, spices & manufactures	22	134.0	139.9	152.5	4.4	9.0	45.4
Animal feeding stuff (excl unmilled cereals)	7	99.4	99.2	99.2	-0.2	-	-0.4
Miscellaneous food preparations	44	99.9	100.0	99.3	0.2	-0.8	-1.5
Beverages & Tobacco	26	99.1	98.7	97.2	-0.4	-1.5	-4.1
Beverages	23	99.4	98.9	97.6	-0.4	-1.3	-3.3
Tobacco & manufactures	3	96.8	96.7	94.2	-0.1	-2.6	-9.3
Crude Materials (excl fuels)	75	97.1	96.2	100.0	-0.9	3.9	2.2
Hides Skins & Furskins	1	100.0	100.0	100.0	-	-	-
Oil seeds & oleaginous fruits	1	97.0	96.2	94.3	-0.9	-1.9	-6.1
Crude rubber	26	101.5	103.9	103.9	2.3	-	5.6
Cork & wood	3	97.2	97.8	97.3	0.6	-0.4	-2.1
Crude fertilizers & minerals	18	100.0	99.2	101.5	-0.8	2.3	2.0
Metalliferous ores & metal scrap	21	88.6	83.2	95.2	-6.1	14.4	0.2
Crude animal & vegetable materials nes	6	97.9	97.9	97.0	0.1	-0.9	-0.5
Mineral Fuels, Lubricants & Related Materials	2,804	101.8	101.7	95.7	-0.1	-5.9	-6.9
Petroleum & products & related materials	2,624	101.8	101.8	95.6	-	-6.1	-7.1
Gas	180	102.5	100.6	97.8	-1.9	-2.8	-3.2
Animal & Vegetable Oils, Fats & Waxes	67	97.4	86.6	85.8	-11.1	-0.9	-15.6
Fixed vegetable fats & oils	21	88.6	89.1	88.1	0.6	-1.1	-10.7
Inedible Mixtures Of Animal Or Vegetable Fats Or Oils	46	101.5	85.5	84.8	-15.8	-0.8	-17.6
Chemicals & Chemical Products	1,225	98.2	97.9	96.2	-0.3	-1.7	-2.8
Organic chemicals	573	99.1	99.1	97.3	-	-1.8	-0.8
Inorganic chemicals	56	97.0	97.5	97.5	0.4	0.1	-4.0
Dyeing, tanning & colouring materials	42	99.7	99.3	97.7	-0.4	-1.6	-2.9
Medicinal & pharmaceutical products	100	104.5	104.4	102.9	-0.1	-1.5	4.3
Essential oils & perfume; toilet cleaning products	77	97.3	97.4	96.7	-	-0.6	-2.6
Plastics in primary forms	141	97.0	97.4	94.2	0.4	-3.3	-3.5
Plastics in non-primary forms	33	99.1	97.7	97.0	-1.4	-0.7	-3.4
Chemical materials & products nes	204	93.4	91.7	90.1	-1.9	-1.7	-10.9
Manufactured Goods	416	97.9	97.8	96.8	-0.1	-1.0	-2.5
Rubber manufactures nes	7	100.8	99.0	97.2	-1.7	-1.9	-5.0
Wood & cork manufactures (excl furniture)	14	90.8	90.3	90.1	-0.5	-0.2	-7.6
Paper manufactures	34	94.9	94.9	94.9	-	-	-5.7
Textile manufactures	13	99.7	99.0	97.9	-0.7	-1.1	-3.6
Non-metal mineral manufactures nes	83	96.8	96.6	96.2	-0.1	-0.5	-3.3
Iron & steel	97	95.7	95.3	94.4	-0.4	-0.9	-3.7
Non-ferrous metals	47	105.4	105.4	102.8	-	-2.4	6.4
Manufactures of metals nes	120	98.8	99.0	98.0	0.2	-1.0	-2.8
Machinery & Transport Equipment	4,316	104.1	100.0	97.7	-3.9	-2.3	-1.0
Power-generating machinery & equipment	120	105.4	104.9	102.7	-0.5	-2.1	1.6
Machinery specialized for particular industries	415	97.1	96.8	96.6	-0.2	-0.2	-3.2
Metal working machinery	18	96.8	93.6	89.6	-3.4	-4.2	-7.3
General industrial machinery	156	99.0	99.2	98.3	0.2	-0.9	-2.4
Office machines & data-processing machines	495	101.1	98.2	99.7	-2.9	1.6	-2.8
Telecommunication apparatus	115	100.0	99.8	98.2	-0.2	-1.5	-7.4
Electrical machinery apparatus nes, electrical parts	2,950	106.1	100.6	97.3	-5.1	-3.4	-0.3
Road vehicles	47	100.5	99.6	99.5	-0.8	-0.1	0.8
Miscellaneous Manufactured Articles	797	95.3	95.4	94.3	-	-1.2	-6.1
Prefab building, sanitary plumbing, lighting nes	6	98.4	98.3	95.6	-0.1	-2.7	-5.8
Furniture, bedding, mattresses, cushions & others	30	99.9	99.9	99.9	0.1	-	-
Travel goods, handbags & similar containers	20	105.9	105.9	105.9	-	-	6.3
Articles of apparel & clothing accessories	27	88.1	89.9	87.3	2.1	-2.9	-11.3
Footwear	6	101.8	101.9	97.4	0.1	-4.4	-0.6
Professional scientific & controlling instruments	387	89.0	88.5	86.9	-0.5	-1.8	-13.9
Photographic & optical goods nes; watches & clocks	59	102.7	103.2	102.8	0.5	-0.4	2.3
Miscellaneous manufactured articles nes	261	102.3	102.7	102.3	0.4	-0.4	2.5

Figures may not sum to total due to rounding.

Table 3 Singapore Manufactured Products Price Index

Section	All Items	Non-oil Items	Food & Live Animals	Beverages & Tobacco	Crude Materials	Mineral Fuels	Animal & Vegetable Oils, Fats & Waxes	Chemicals & Chemical Products	Manufactured Goods	Machinery & Transport Equipment	Misc. Manufactured Articles
Weights	10,000	8,369	220	14	40	1,631	9	1,795	255	5,266	772
Index (2023=100)											
2020	83.2	89.4	87.4	91.8	73.9	48.8	73.3	93.1	89.7	86.8	98.8
2021	91.1	93.6	88.5	91.8	85.5	77.4	102.0	100.7	95.4	90.5	97.5
2022	104.7	102.8	96.0	95.6	102.2	115.0	128.3	108.4	102.2	101.5	100.4
2023	100.0	100.0	100.0	100.0	100.0	100.0	100.0	100.0	100.0	100.0	100.0
2023											
Aug	101.4	99.7	100.3	99.8	98.9	110.2	101.3	99.2	100.1	99.7	101.1
Sep	103.9	101.5	100.7	100.1	100.4	116.3	97.9	101.1	100.1	101.6	102.3
Oct	102.4	101.2	101.3	100.1	95.9	108.5	98.3	101.7	100.0	101.0	102.2
Nov	101.6	101.7	100.5	100.1	95.4	101.2	92.3	99.9	99.7	102.7	100.4
Dec	100.8	101.6	100.0	100.1	95.4	97.2	91.6	97.9	99.0	103.1	101.2
2024											
Jan	101.0	101.8	99.7	98.5	98.9	97.1	93.1	97.3	99.3	104.0	99.2
Feb	101.1	101.8	101.5	98.5	100.3	97.7	93.6	99.4	99.0	103.4	97.9
Mar	101.5	101.9	101.1	98.5	99.2	99.4	91.5	100.7	98.7	103.3	96.5
Apr	101.9	102.2	103.0	98.5	102.5	100.5	91.6	100.9	99.1	103.7	95.6
May	101.1	102.2	103.1	98.5	100.6	95.7	91.9	100.2	99.3	104.1	94.5
Jun	101.5	102.5	104.5	98.5	102.2	96.5	95.0	98.7	98.7	105.3	92.9
Jul	98.9	99.4	102.6	98.5	104.4	96.6	94.4	98.3	98.8	100.6	92.7
Aug	95.6	97.1	102.5	95.4	103.6	88.3	94.2	96.6	98.1	97.8	90.9
Percentage Change over same period of previous year (%)											
2021	9.5	4.6	1.3	-	15.8	58.7	39.2	8.1	6.4	4.3	-1.4
2022	14.9	9.9	8.4	4.1	19.5	48.5	25.8	7.7	7.1	12.1	3.0
2023	-4.5	-2.7	4.2	4.5	-2.2	-13.0	-22.1	-7.7	-2.1	-1.5	-0.4
2023											
Aug	-4.6	-3.9	2.8	3.7	-9.7	-8.5	-26.4	-8.0	-3.0	-3.2	0.4
Sep	-2.2	-3.6	2.4	4.0	-13.4	3.8	-29.8	-7.0	-3.0	-3.1	0.7
Oct	-3.9	-4.0	1.1	4.0	-12.4	-3.9	-18.0	-5.7	-2.4	-4.2	-0.3
Nov	-2.1	-1.2	0.3	3.9	-14.2	-7.0	-16.4	-5.2	-2.1	0.3	-0.9
Dec	0.3	0.7	0.5	4.0	-12.0	-1.2	-13.0	-4.8	-1.9	2.7	1.5
2024											
Jan	1.8	3.0	0.3	-1.9	-2.1	-3.7	-8.5	-2.9	-0.9	5.6	1.6
Feb	2.0	3.0	2.0	-1.9	-0.7	-3.1	-7.9	-0.9	-1.2	5.1	0.3
Mar	2.3	1.8	1.5	-1.3	-2.9	4.6	-10.1	-2.6	-1.9	4.5	-3.4
Apr	3.3	2.8	3.7	-1.3	-0.3	6.1	-12.5	-1.1	-1.4	5.2	-2.2
May	3.5	2.8	3.0	-1.3	-3.7	7.7	-11.9	-0.3	-1.1	5.1	-4.0
Jun	4.4	3.9	4.7	-1.3	-2.9	7.3	-7.9	1.4	-1.3	6.7	-7.3
Jul	0.2	0.2	3.2	-1.3	7.0	-	-6.8	2.1	-0.5	0.8	-8.4
Aug	-5.7	-2.7	2.2	-4.4	4.8	-19.9	-7.1	-2.6	-2.0	-1.9	-10.1

Table 4 Domestic Supply Price Index

Section	All Items	Non-oil Items	Food & Live Animals	Beverages & Tobacco	Crude Materials	Mineral Fuels	Animal & Vegetable Oils, Fats & Waxes	Chemicals & Chemical Products	Manufactured Goods	Machinery & Transport Equipment	Misc. Manufactured Articles
Weights	10,000	7,196	274	26	75	2,804	67	1,225	416	4,316	797
Index (2023=100)											
2020	78.4	89.2	89.1	87.5	82.2	53.2	74.4	88.7	88.6	88.8	94.4
2021	90.4	92.8	91.0	88.0	88.9	84.6	107.7	97.1	96.8	90.9	95.2
2022	107.2	102.1	98.5	96.4	99.2	119.2	126.9	106.0	104.0	101.6	99.1
2023	100.0	100.0	100.0	100.0	100.0	100.0	100.0	100.0	100.0	100.0	100.0
2023											
Aug	99.7	99.0	100.9	101.4	97.8	102.8	101.7	99.0	99.3	98.7	100.3
Sep	101.8	100.2	100.7	100.9	95.9	108.3	100.2	101.0	99.2	100.0	100.8
Oct	100.8	99.7	100.5	100.5	95.2	105.2	99.6	101.4	99.1	99.3	100.2
Nov	100.3	99.9	99.6	100.6	98.7	102.3	98.9	99.5	98.5	100.2	99.1
Dec	99.3	99.7	99.9	100.4	97.7	97.7	97.7	98.0	98.1	100.2	99.6
2024											
Jan	99.0	99.4	101.0	98.0	97.0	97.1	98.3	98.0	97.8	99.9	98.8
Feb	98.7	98.7	101.1	98.3	97.9	98.5	96.7	99.0	97.7	98.8	98.3
Mar	98.3	97.4	101.0	98.2	97.8	101.8	86.2	99.5	97.4	96.9	97.9
Apr	102.2	101.3	101.6	97.8	97.1	104.5	94.1	100.1	97.8	102.8	97.5
May	101.5	101.2	102.0	98.6	99.3	102.3	96.9	99.2	98.1	102.9	96.8
Jun	101.6	101.5	102.1	99.1	97.1	101.8	97.4	98.2	97.9	104.1	95.3
Jul	99.7	98.9	102.8	98.7	96.2	101.7	86.6	97.9	97.8	100.0	95.4
Aug	96.7	97.1	103.1	97.2	100.0	95.7	85.8	96.2	96.8	97.7	94.3
Percentage Change over same period of previous year (%)											
2021	15.2	4.0	2.1	0.5	8.1	59.2	44.9	9.5	9.3	2.4	0.9
2022	18.6	10.0	8.2	9.5	11.6	40.8	17.8	9.2	7.5	11.7	4.0
2023	-6.7	-2.1	1.5	3.8	0.8	-16.1	-21.2	-5.7	-3.9	-1.6	1.0
2023											
Aug	-7.5	-3.9	0.8	3.8	-3.7	-13.7	-18.8	-6.3	-4.6	-4.1	1.1
Sep	-4.0	-4.2	-	2.6	-9.5	-1.1	-17.0	-5.5	-4.8	-4.8	0.8
Oct	-4.6	-5.0	-1.0	1.1	-8.3	-1.7	-15.3	-4.2	-5.0	-6.2	-0.1
Nov	-2.6	-2.5	-1.1	1.7	-5.2	-2.0	-13.3	-3.7	-4.2	-2.5	-
Dec	0.9	-0.9	-0.2	2.3	-4.7	4.5	-11.4	-3.5	-3.6	-0.4	1.8
2024											
Jan	-2.7	-1.7	1.9	0.4	-9.2	-6.9	-2.9	-2.3	-3.3	-1.7	-0.3
Feb	-3.0	-2.3	1.9	0.8	-8.2	-5.6	-4.5	-1.3	-3.5	-2.7	-0.9
Mar	-2.0	-3.3	1.1	-0.4	-7.4	3.3	-15.0	-3.4	-3.4	-3.4	-2.3
Apr	2.0	0.5	1.8	-1.8	-2.2	6.9	-4.8	-2.0	-3.4	2.1	-2.3
May	2.7	0.9	2.1	-1.9	-1.4	10.1	-1.2	-1.4	-3.1	2.7	-3.5
Jun	4.4	2.7	1.9	-1.9	-1.0	11.6	-3.5	0.2	-2.6	5.6	-5.3
Jul	1.8	0.2	2.6	-2.6	-1.3	7.4	-13.5	1.1	-2.0	1.4	-5.3
Aug	-3.0	-1.9	2.2	-4.1	2.2	-6.9	-15.6	-2.8	-2.5	-1.0	-6.1

NOTATIONS

- nes not elsewhere specified
- nil or negligible

NOTES

The Singapore Manufactured Products and Domestic Supply Price Indices report contains statistics that are the most recent available at the time of its preparation.

Some statistics, particularly those for the most recent time periods, are provisional and may be subject to revision in later issues.

SINGAPORE DEPARTMENT OF STATISTICS COMMUNICATIONS & INFORMATION SERVICES

Singapore Department of Statistics (DOS) offers official statistics, data insights, visualisations and statistical resources through user-friendly platforms.



SingStat Website

Visit this convenient gateway to access latest data and statistical information.

Data across the six major themes of Economy, Industry, Trade & Investment, Population, Households and Society, covering some 200 topics such as Gross Domestic Product, Consumer Price Index, Retail Sales and Food & Beverage Services Indices, Producer Price Indices, Business Expectations, Business Receipts Index, Trade in Services, Direct Investment, Population Indicators, Household Income, Household Expenditure, Deaths and Life Expectancy, Births and Fertility, Marriages and Divorces, and more.

Publications

- Information Papers which highlight conceptual and methodological changes and improvements in official statistics.
- Occasional Papers which present statistical trends and observations on important social and economic issues to stimulate discussion and research.
- eBook of Statistics which consolidates latest information and resources on key economic and socio-demographic domains.
- Singapore in Figures which allows exploration of key economic and socio-demographic statistics through interactive dashboards.
- Statistics Singapore Newsletter which features articles on latest key statistical activities, recent survey findings and methodological improvements.

Visualisations such as infographics and interactive dashboards with latest data, and videos to explain data and statistical concepts.

Data for Businesses with data tools to empower data-driven business decisions, giving firms insights on their customers, industries and business performance.

Advance Release Calendar providing dates of upcoming data releases in the next six months.



SingStat Table Builder

Access for free over 2,200 data tables across various economic and socio-demographic domains from 70 public sector agencies. Watch the [video](#) to find out how you can easily access and customise data tables.



SingStat Mobile App

Download the app for fast and convenient access to commonly used statistics from your mobile devices. Over 260 charts are available across 38 data categories for easy access to visualise data trends.



SingStat Express

Subscribe to receive alerts on the latest press releases, occasional/information papers and newsletters.



For statistical enquiries, you may reach us at:

✉ email: info@singstat.gov.sg or submit the [Data Request Form](#)

☎ phone: 1800-323 8118* (Local users) or (65) 6332 7738 (Overseas users)

* Calls from mobile telephone lines to 1800 local toll-free number may be subject to mobile airtime charges as imposed by the relevant mobile service provider.

Find us on social media!



@SingStat



@singstat_dos



@SingStatvideo



@sg-department-of-statistics