



# Singapore Manufactured Products & Domestic Supply Price Indices December 2020

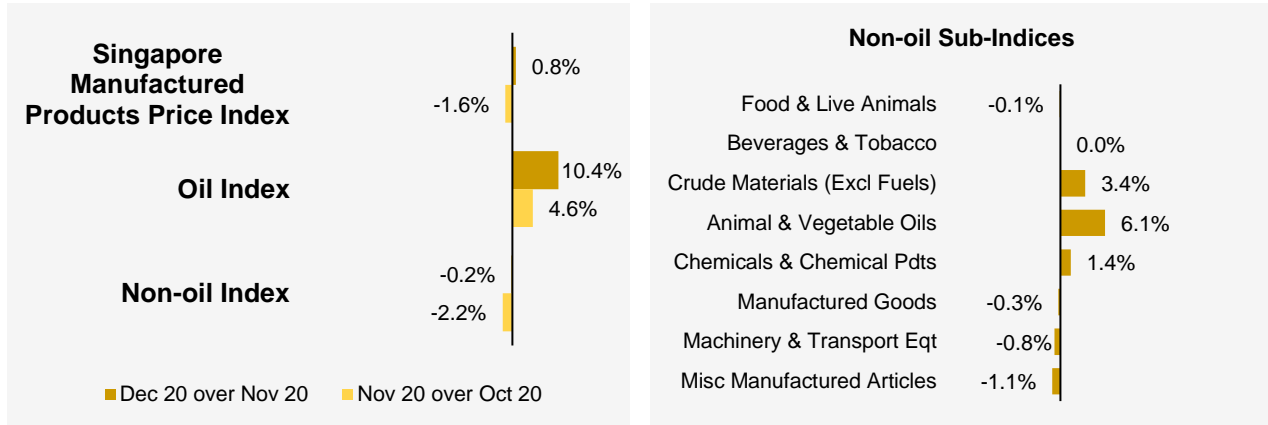
**SINGAPORE MANUFACTURED PRODUCTS &  
DOMESTIC SUPPLY PRICE INDICES, December 2020  
ISSN 2591-7447**

**© Department of Statistics, Ministry of Trade & Industry, Republic of Singapore**

Reproducing or quoting any part of this publication is permitted, provided this publication is accredited as the source. Please refer to the SingStat Website Terms of Use (<http://www.singstat.gov.sg/terms-of-use>) for more details on the conditions of use of this publication.

# Singapore Manufactured Products Price Index (2018 = 100) December 2020

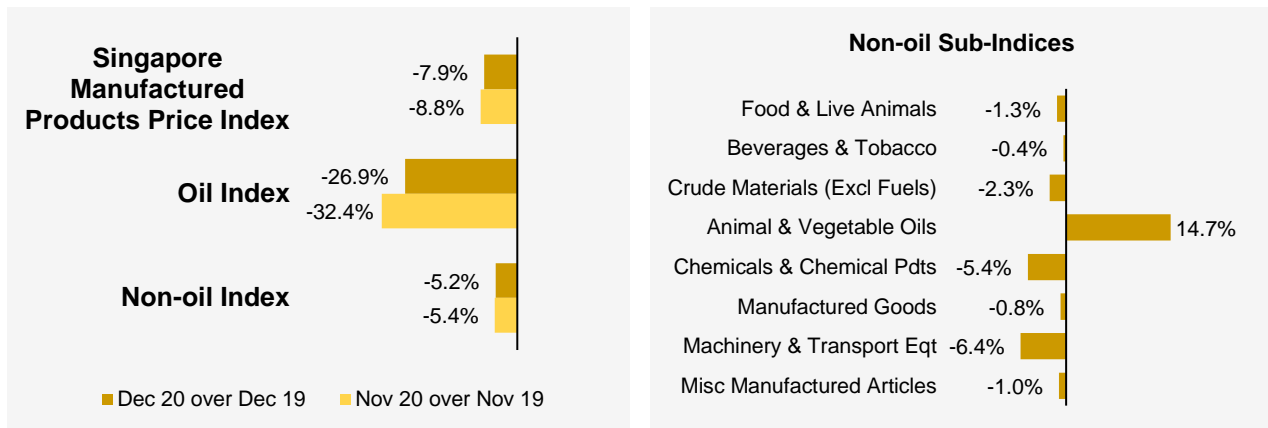
## Month-on-Month Change



The Singapore Manufactured Products Price Index rose 0.8% in December 2020, in contrast to the 1.6% decrease in November 2020. The Oil index rose 10.4%, after the 4.6% increase in the previous month. The Non-oil index fell 0.2%, following the 2.2% decrease in November 2020.

For the Non-oil sub-indices, the decreases were led by the Miscellaneous Manufactured Articles (-1.1%) index due mainly to lower prices of scientific equipment, and the Machinery & Transport Equipment (-0.8%) index. The declines were partially moderated by increases in the Crude Materials (3.4%) and Chemicals & Chemical Products (1.4%) indices, attributed mainly to higher prices of rubber products and hydrocarbon derivatives respectively.

## Year-on-Year Change



The Singapore Manufactured Products Price Index fell 7.9% in December 2020 from a year ago, following the 8.8% decrease in November 2020. The Oil and Non-oil indices fell 26.9% and 5.2% respectively.

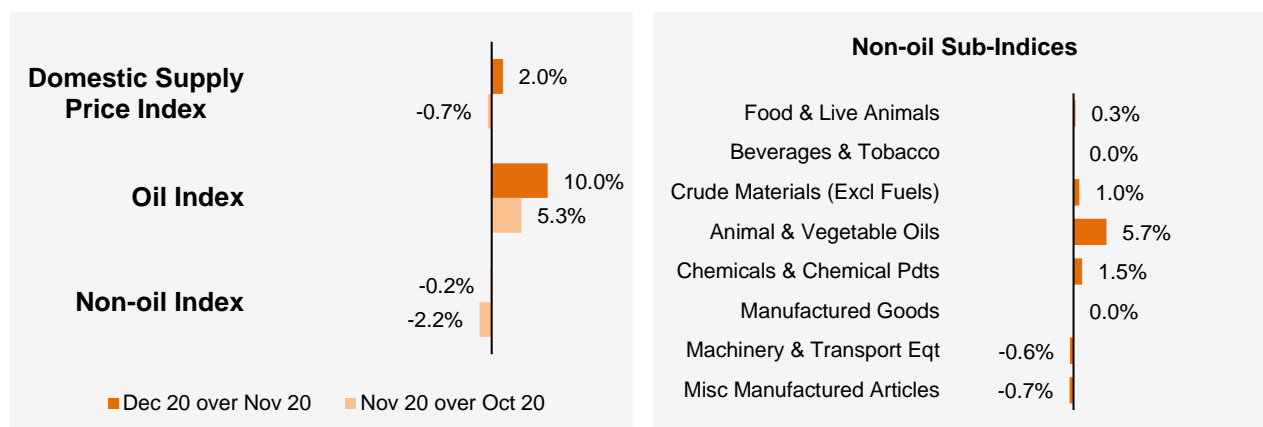
For the Non-oil sub-indices, lower prices of Machinery & Transport Equipment (-6.4%), Chemicals & Chemical Products (-5.4%), Crude Materials (-2.3%), Food & Live Animals (-1.3%), Miscellaneous Manufactured Articles (-1.0%), Manufactured Goods (-0.8%) and Beverages & Tobacco (-0.4%) were partially offset by higher prices of Animal & Vegetable Oils (14.7%).

## Annual Change

The Singapore Manufactured Products Price Index fell 6.9% in 2020 over 2019, following the 3.3% decline in 2019. Lower prices of Oil (-37.2%), Chemicals & Chemical Products (-8.3%), Crude Materials (-5.6%) and Machinery & Transport Equipment (-0.7%) were partially offset by higher prices of Animal & Vegetable Oils (8.2%), Manufactured Goods (3.5%), Food & Live Animals (1.3%), Miscellaneous Manufactured Articles (0.4%) and Beverages & Tobacco (0.1%).

## Domestic Supply Price Index (2018 = 100) December 2020

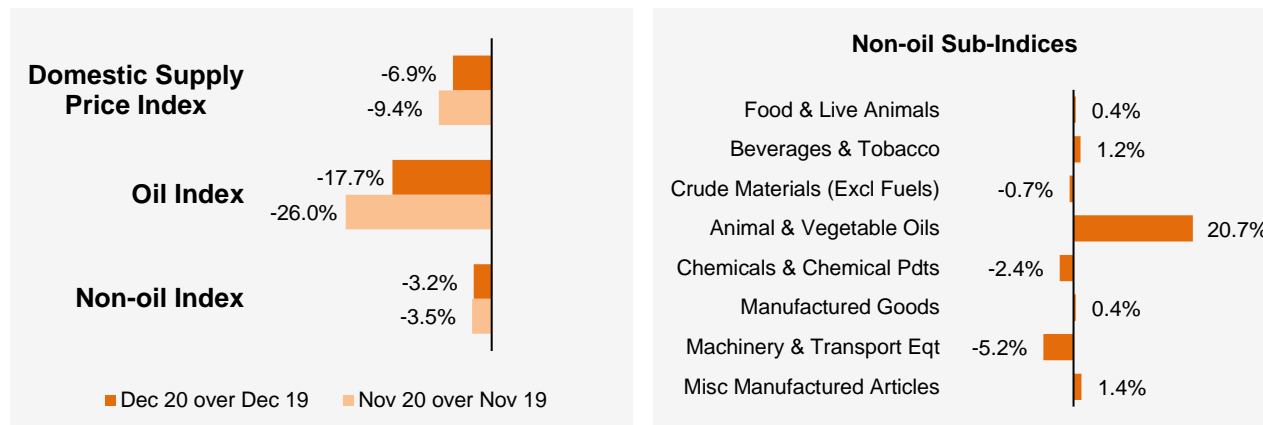
### Month-on-Month Change



The Domestic Supply Price Index increased 2.0% in December 2020, in contrast to the 0.7% decrease in November 2020. The Oil index increased 10.0%, following the 5.3% increase in the previous month. The Non-oil index declined 0.2%, following the 2.2% decrease in November 2020.

Among the Non-oil sub-indices, the declines were led by the Miscellaneous Manufactured Articles (-0.7%) and Machinery & Transport Equipment (-0.6%) indices. The declines were partially moderated by increases in the Animal & Vegetable Oils (5.7%) and Chemicals & Chemical Products (1.5%) indices, attributed mainly to higher prices of palm oil products and hydrocarbon derivatives respectively.

### Year-on-Year Change



The Domestic Supply Price Index fell 6.9% in December 2020 from a year ago, following the 9.4% decrease in November 2020. The Oil and Non-oil indices declined 17.7% and 3.2% respectively.

For the Non-oil sub-indices, lower prices of Machinery & Transport Equipment (-5.2%), Chemicals & Chemical Products (-2.4%) and Crude Materials (-0.7%) were partially offset by higher prices of Animal & Vegetable Oils (20.7%), Miscellaneous Manufactured Articles (1.4%), Beverages & Tobacco (1.2%), Manufactured Goods (0.4%) and Food & Live Animals (0.4%).

### Annual Change

The Domestic Supply Price Index fell 8.7% in 2020 over 2019, following the 3.3% decline in 2019. Lower prices of Oil (-30.7%), Chemicals & Chemical Products (-6.9%), Crude Materials (-1.1%) and Machinery & Transport Equipment (-0.2%) were partially offset by higher prices of Animal & Vegetable Oils (13.9%), Miscellaneous Manufactured Articles (2.9%), Food & Live Animals (2.2%), Beverages & Tobacco (2.1%) and Manufactured Goods (0.7%).

## Technical Note

The **Singapore Manufactured Products Price Index (SMPPI)** monitors price changes of locally manufactured commodities. The weights of the index are derived from the distribution of local production by commodity in 2018. Ex-factory prices are obtained from principal manufacturers of the items concerned.

The **Domestic Supply Price Index (DSPI)** is designed to measure the changes in the price level of goods manufactured locally or imported which are retained for use in the domestic economy by the government, business or household sectors. For imported products, the prices refer to those paid by importers in bringing the goods into Singapore, commonly referred to as c.i.f. prices. In the case of Singapore manufactured products, the quotations used are ex-factory prices. The weight for each commodity item is proportional to the value of its total supply or availability in the domestic market in 2018.

### Index Formula

The 2018-based series is compiled using the 'modified Laspeyres' formula where the weight reference period of 2017 preceded the price reference period of 2018. The geometric mean formula has been adopted in the computation of unweighted elementary aggregate price indices. The arithmetic mean formula is applied in compiling indices at higher levels of aggregation where weights of specific sub-indices are available.

### Measurement of Changes in Price Indices

*Change over previous month* compares the index of the month with that of the preceding month. Such comparisons measure the change in the price index between two consecutive months. They serve as useful short-term indicators of the price movements.

*Change over same period of previous year* measures change in the index over a twelve-month period. Such comparisons compare the movement in the price index between similar months in two consecutive years.

### Linking the Old 2012-Based Price Index Series to the New 2018-Based Price Index Series

The SMPPI and DSPI have been rebased from base year 2012 to base year 2018. To facilitate comparison of the historical price indices across base years, the old 2012-based series are linked to the new 2018-based series by re-scaling them via a Linked Coefficient. The Linked Coefficient is the ratio of the annual 2018-based index in 2018 to the annual 2012-based index in 2018.

Example : Linking the old Iron & Steel Index series for SMPPI prior to 2018, to the 2018-based Iron & Steel Index (2018=100)

1) Calculate the linked coefficient

Year	Iron & Steel Index (2012=100)	Iron & Steel Index (2018=100)	Linked Coefficient
2018	78.0	100.0	$100.0 \div 78.0 = 1.282$

2) Re-scaling the old series to the 2018-based series using the Linked Coefficient

Year	Month	Iron & Steel Index (2012=100)	Iron & Steel Index (2018=100)
2016	Dec	70.8	$70.8 \times 1.282 = 90.8$
2017	Jan	71.4	$71.4 \times 1.282 = 91.5$

### Linking Method for Maintaining the Old Index Reference Period

To continue the old 2012-based index series going forward in time, re-scale the new 2018-based index series to the old base year 2012 level, via a Linked Coefficient. The Linked Coefficient is the ratio of the annual 2012-based index in 2018 to the annual 2018-based index in 2018.

Example : Linking the new 2018-based Iron & Steel Index series for SMPPI to the 2012-based Iron & Steel Index (2012=100)

1) Calculate the linked coefficient

Year	Iron & Steel Index (2018=100)	Iron & Steel Index (2012=100)	Linked Coefficient
2018	100.0	78.0	$78.0 \div 100.0 = 0.780$

2) Re-scaling the new series to the 2012-based series using the Linked Coefficient

Year	Month	Iron & Steel Index (2018=100)	Iron & Steel Index (2012=100)
2019	Jan	105.6	$105.6 \times 0.780 = 82.4$
2019	Feb	104.7	$104.7 \times 0.780 = 81.7$

### Index Revision

The indices may be revised when late returns and amendments received from respondents are incorporated.

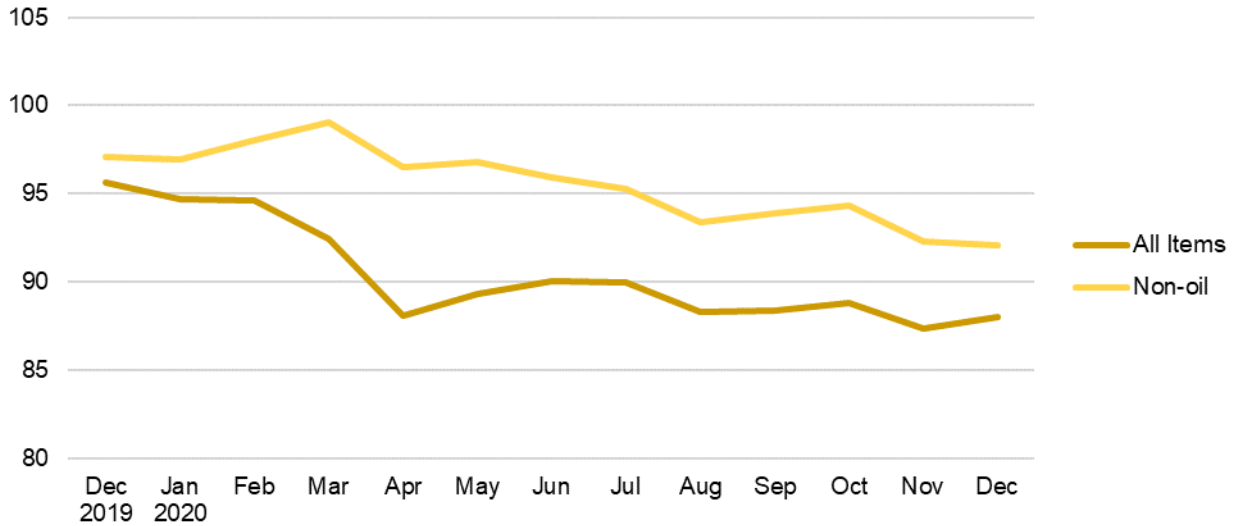
### Dissemination of Data

The Singapore Manufactured Products and Domestic Supply Price Indices are available on the SingStat Website ([www.singstat.gov.sg/tablebuilder](http://www.singstat.gov.sg/tablebuilder)). Excel tables for this month's report are available at <https://www.singstat.gov.sg/publications/economy/producer-price-indices> or through the QR code below:

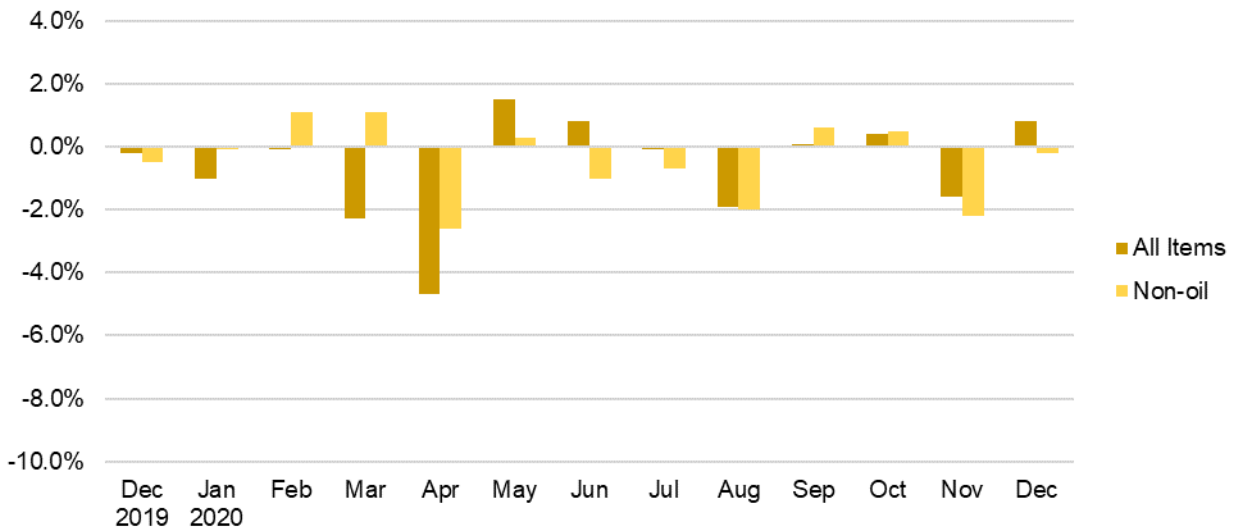


## Singapore Manufactured Products Price Index (2018 = 100) December 2020

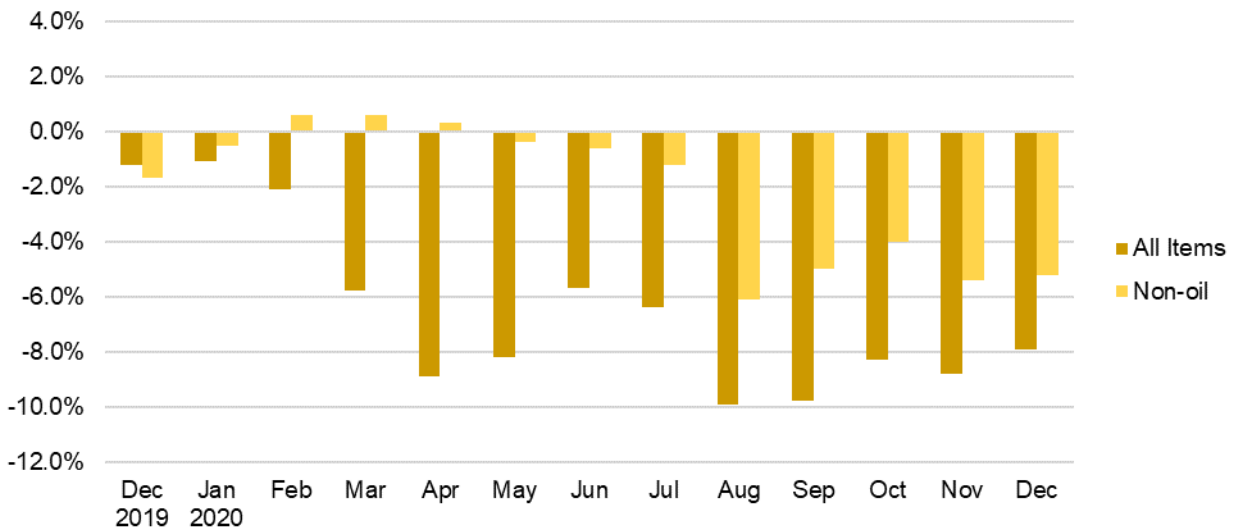
**Chart 1: Index**



**Chart 2: Month-on-Month Change**

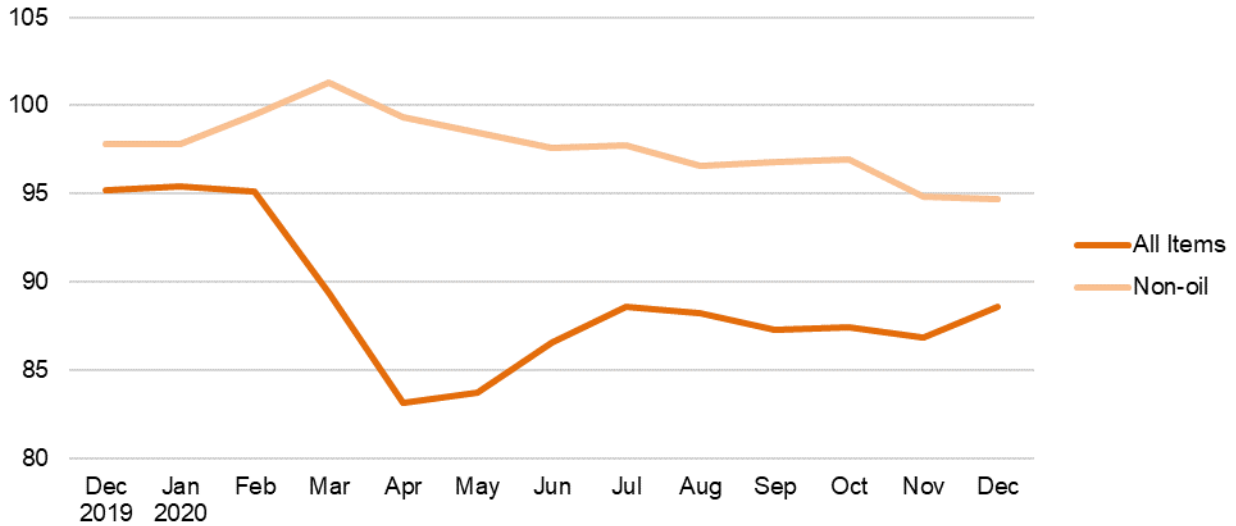


**Chart 3: Year-on-Year Change**

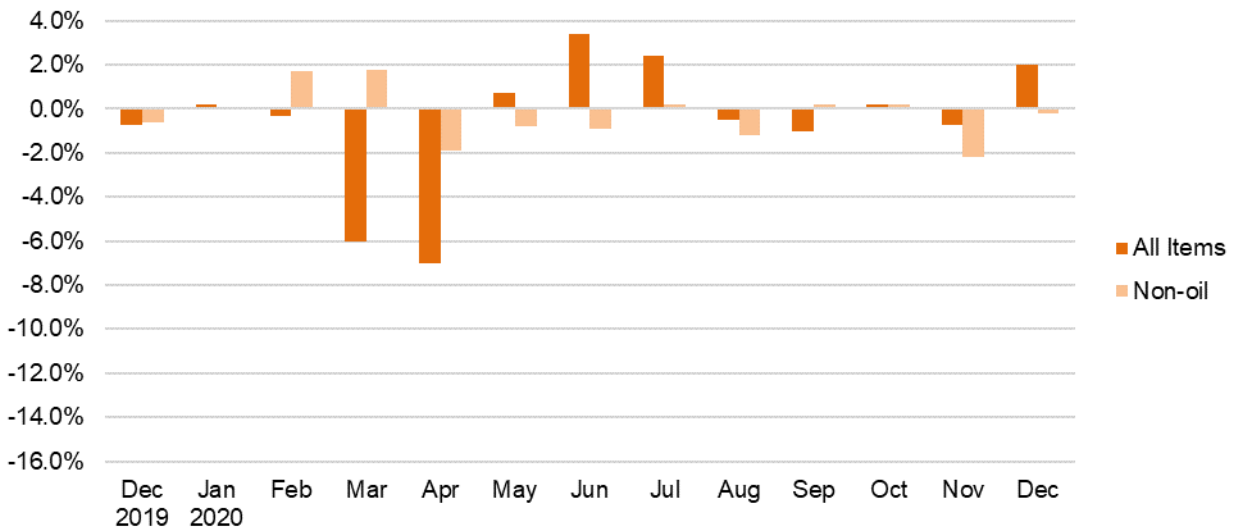


## Domestic Supply Price Index (2018 = 100) December 2020

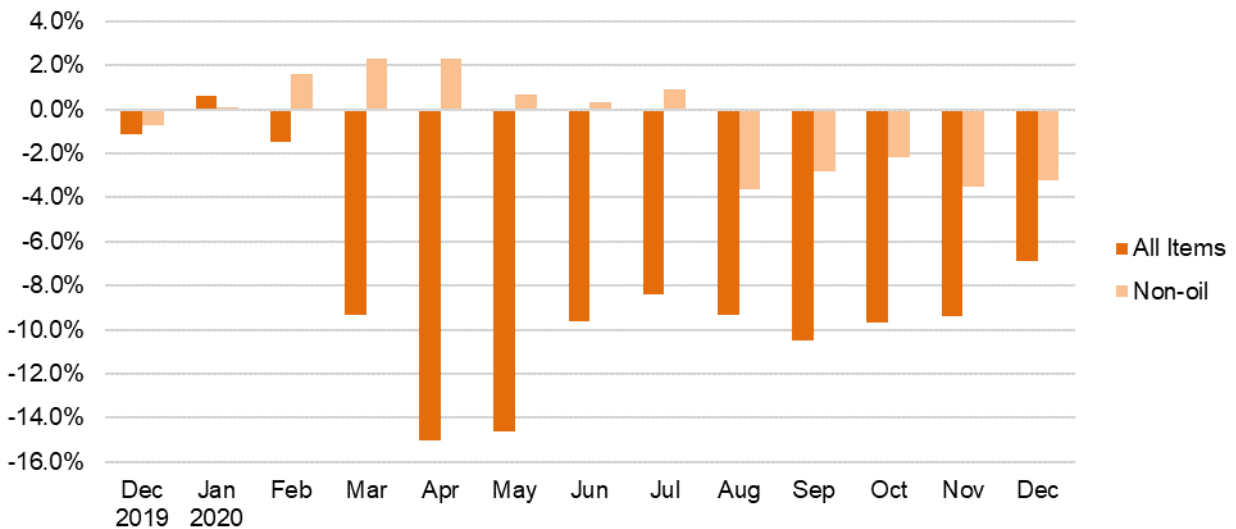
**Chart 4: Index**



**Chart 5: Month-on-Month Change**



**Chart 6: Year-on-Year Change**





**Table 1 Singapore Manufactured Products Price Index**
**December 2020**

Commodity section / division	Weights	Index (2018=100)			% Change		
					Nov 2020	Dec 2020	Dec 2020
		Oct 2020	Nov 2020	Dec 2020	Oct 2020	Nov 2020	Dec 2019
<b>All Items</b>	<b>10,000</b>	<b>88.8</b>	<b>87.3</b>	<b>88.0</b>	<b>-1.6</b>	<b>0.8</b>	<b>-7.9</b>
<b>Non-oil Items</b>	<b>8,586</b>	<b>94.3</b>	<b>92.3</b>	<b>92.0</b>	<b>-2.2</b>	<b>-0.2</b>	<b>-5.2</b>
Food & Live Animals	256	100.2	100.0	99.8	-0.2	-0.1	-1.3
Meat & meat preparations	20	107.3	107.6	107.8	0.3	0.2	1.9
Dairy products & birds' eggs	15	104.9	104.2	103.4	-0.7	-0.7	-1.0
Fish seafood & preparations	5	95.2	95.2	95.5	-0.1	0.3	1.0
Cereals & cereal preparations	42	104.2	104.2	104.1	-	-	0.7
Vegetables & fruit	3	100.0	100.0	100.0	-	-	0.7
Coffee, tea, cocoa, spices & manufactures	28	95.0	94.3	94.8	-0.7	0.5	1.1
Animal feeding stuff (excl unmilled cereals)	6	90.3	90.0	89.7	-0.3	-0.4	-4.1
Miscellaneous food preparations	135	99.1	98.9	98.6	-0.2	-0.3	-3.0
Beverages & Tobacco	31	103.6	103.6	103.6	-	-	-0.4
Beverages	31	103.6	103.6	103.6	-	-	-0.4
Crude Materials (excl fuels)	56	86.2	88.2	91.1	2.3	3.4	-2.3
Crude rubber	50	84.3	86.4	89.6	2.6	3.6	-3.0
Cork & wood	1	100.9	100.9	100.9	-	-	-
Crude fertilizers & minerals	2	103.2	103.2	103.2	-	-	-5.2
Metalliferous ores & metal scrap	4	101.9	102.2	105.0	0.2	2.8	7.2
Mineral Fuels, Lubricants & Related Materials	1,414	55.0	57.5	63.5	4.6	10.4	-26.9
Petroleum & products & related materials	1,386	54.8	57.2	63.3	4.3	10.6	-27.2
Gas	28	63.4	72.3	74.7	14.1	3.3	-10.3
Animal & Vegetable Oils, Fats & Waxes	14	95.4	95.7	101.5	0.3	6.1	14.7
Fixed vegetable fats & oils	14	95.4	95.7	101.5	0.3	6.1	14.7
Chemicals & Chemical Products	2,165	84.8	86.2	87.4	1.7	1.4	-5.4
Organic chemicals	1,012	77.6	80.6	82.9	3.8	2.9	-6.2
Inorganic chemicals	40	88.8	91.1	91.6	2.6	0.6	-7.5
Dyeing, tanning & colouring materials	22	101.2	101.2	100.2	-	-1.1	-
Medicinal & pharmaceutical products	232	86.4	85.5	85.6	-1.0	0.1	-10.5
Essential oils & perfume; toilet cleaning products	133	100.6	101.4	101.7	0.7	0.4	3.6
Plastics in primary forms	372	86.7	87.3	88.5	0.7	1.4	-2.1
Plastics in non-primary forms	34	98.7	98.1	97.4	-0.6	-0.7	-1.6
Chemical materials & products nes	320	94.0	93.9	93.2	-0.2	-0.7	-7.6
Manufactured Goods	284	105.3	105.4	105.0	0.1	-0.3	-0.8
Rubber manufactures nes	23	100.7	100.0	97.9	-0.6	-2.1	-1.2
Wood & cork manufactures (excl furniture)	8	98.2	98.2	98.2	-	-	-1.5
Paper manufactures	34	95.7	96.1	95.5	0.3	-0.5	-5.8
Non-metal mineral manufactures nes	45	100.1	100.1	100.1	0.1	-	-6.2
Iron & steel	53	103.1	103.5	103.5	0.4	-0.1	-2.2
Non-ferrous metals	20	98.9	98.5	99.1	-0.4	0.6	2.2
Manufactures of metals nes	99	115.1	115.2	114.8	0.1	-0.4	3.5
Machinery & Transport Equipment	4,897	96.7	92.4	91.7	-4.4	-0.8	-6.4
Power-generating machinery & equipment	8	85.4	85.0	84.5	-0.4	-0.6	-5.5
Machinery specialized for particular industries	571	98.1	97.1	97.4	-1.0	0.3	-1.5
Metal working machinery	18	107.1	107.1	107.0	-	-0.1	-
General industrial machinery	85	101.4	101.1	100.6	-0.3	-0.5	-2.8
Office machines & data-processing machines	880	104.5	103.4	102.3	-1.0	-1.1	-0.9
Telecommunication apparatus	45	94.8	94.7	95.3	-0.2	0.6	3.0
Electrical machinery apparatus nes, electrical parts	3,271	94.2	88.3	87.5	-6.3	-0.9	-9.2
Road vehicles	20	98.3	97.7	97.6	-0.6	-0.2	-5.3
Miscellaneous Manufactured Articles	883	99.8	99.4	98.4	-0.3	-1.1	-1.0
Furniture, bedding, mattresses, cushions & others	16	100.1	100.1	100.1	-	-	-
Travel goods, handbags & similar containers	1	102.0	101.1	101.8	-0.9	0.7	-1.4
Professional scientific & controlling instruments	516	98.5	98.1	96.9	-0.4	-1.3	-2.4
Photographic & optical goods nes; watches & clocks	48	98.3	97.8	96.4	-0.5	-1.3	-2.1
Miscellaneous manufactured articles nes	303	102.2	101.9	101.1	-0.3	-0.8	1.6

Figures may not sum to total due to rounding.

**Table 2 Domestic Supply Price Index**

**December 2020**

Commodity section / division	Weights	Index (2018=100)			% Change		
		Oct 2020	Nov 2020	Dec 2020	Nov 2020	Dec 2020	Dec 2020
					Oct 2020	Nov 2020	Dec 2019
<b>All Items</b>	<b>10,000</b>	<b>87.4</b>	<b>86.9</b>	<b>88.6</b>	<b>-0.7</b>	<b>2.0</b>	<b>-6.9</b>
<b>Non-oil Items</b>	<b>7,212</b>	<b>96.9</b>	<b>94.8</b>	<b>94.7</b>	<b>-2.2</b>	<b>-0.2</b>	<b>-3.2</b>
Food & Live Animals	319	102.2	102.8	103.1	0.6	0.3	0.4
Live animals	10	100.0	100.5	99.7	0.5	-0.8	2.2
Meat & meat preparations	56	106.4	107.6	107.6	1.2	-	1.3
Dairy products & birds' eggs	43	106.2	106.1	107.0	-0.1	0.8	2.8
Fish seafood & preparations	42	93.4	93.5	94.6	0.2	1.2	-3.2
Cereals & cereal preparations	51	102.7	102.3	101.9	-0.4	-0.4	-0.3
Vegetables & fruit	40	108.4	107.9	109.3	-0.5	1.4	2.4
Sugar, sugar preparations & honey	13	101.8	101.2	102.1	-0.6	0.9	5.8
Coffee, tea, cocoa, spices & manufactures	27	95.0	101.2	99.7	6.5	-1.5	-0.9
Animal feeding stuff (excl unmilled cereals)	3	100.8	101.4	101.7	0.7	0.3	2.8
Miscellaneous food preparations	35	99.9	99.8	99.8	-	-0.1	-3.2
Beverages & Tobacco	30	103.4	103.4	103.4	-	-	1.2
Beverages	28	103.8	103.8	103.8	-	-	1.5
Tobacco & manufactures	2	99.5	99.2	98.9	-0.3	-0.3	-2.9
Crude Materials (excl fuels)	85	96.3	96.9	97.8	0.6	1.0	-0.7
Oil seeds & oleaginous fruits	3	113.3	112.8	112.5	-0.4	-0.3	2.6
Crude rubber	31	85.3	87.1	89.6	2.2	2.8	-3.2
Cork & wood	3	94.3	94.3	93.6	-	-0.8	-2.3
Crude fertilizers & minerals	34	102.7	102.5	102.4	-0.1	-0.2	-1.1
Metalliferous ores & metal scrap	5	101.3	101.1	102.9	-0.2	1.7	14.2
Crude animal & vegetable materials nes	10	101.9	102.1	102.6	0.2	0.4	0.7
Mineral Fuels, Lubricants & Related Materials	2,788	62.9	66.2	72.9	5.3	10.0	-17.7
Petroleum & products & related materials	2,669	63.1	66.5	73.3	5.3	10.3	-17.8
Gas	119	57.5	60.6	63.1	5.4	4.0	-12.8
Animal & Vegetable Oils, Fats & Waxes	42	108.2	113.1	119.6	4.5	5.7	20.7
Fixed vegetable fats & oils	42	108.2	113.1	119.6	4.5	5.7	20.7
Chemicals & Chemical Products	1,142	86.5	86.9	88.2	0.5	1.5	-2.4
Organic chemicals	459	72.2	73.5	76.7	1.8	4.4	-3.1
Inorganic chemicals	54	98.7	99.2	100.3	0.5	1.1	7.3
Dyeing, tanning & colouring materials	20	107.2	107.3	107.0	0.1	-0.3	-0.3
Medicinal & pharmaceutical products	95	99.6	99.1	99.1	-0.5	-	-1.6
Essential oils & perfume; toilet cleaning products	62	100.4	101.4	102.4	1.0	0.9	3.4
Plastics in primary forms	158	88.8	89.0	89.6	0.2	0.6	-3.2
Plastics in non-primary forms	32	102.8	102.0	101.4	-0.7	-0.6	0.4
Chemical materials & products nes	263	96.0	95.4	94.7	-0.6	-0.7	-5.2
Manufactured Goods	490	101.8	102.6	102.7	0.8	-	0.4
Rubber manufactures nes	15	103.2	104.0	101.2	0.8	-2.7	-2.5
Wood & cork manufactures (excl furniture)	6	98.2	98.2	98.2	-	-	-1.4
Paper manufactures	53	94.6	94.5	94.0	-0.1	-0.5	-4.6
Textile manufactures	15	99.5	99.2	98.6	-0.2	-0.7	-3.3
Non-metal mineral manufactures nes	123	101.8	102.2	101.9	0.4	-0.3	-3.0
Iron & steel	110	98.4	99.2	99.9	0.8	0.8	-1.2
Non-ferrous metals	80	109.6	113.3	114.5	3.4	1.0	12.7
Manufactures of metals nes	86	103.8	103.5	102.9	-0.3	-0.6	0.2
Machinery & Transport Equipment	4,302	97.4	93.6	93.1	-3.9	-0.6	-5.2
Power-generating machinery & equipment	205	111.4	114.4	113.2	2.7	-1.0	6.4
Machinery specialized for particular industries	189	99.3	98.3	98.0	-1.0	-0.3	-1.6
Metal working machinery	6	104.3	104.2	104.1	-0.1	-0.1	2.6
General industrial machinery	90	100.6	100.3	99.8	-0.3	-0.5	-
Office machines & data-processing machines	192	99.8	97.9	97.1	-2.0	-0.8	-2.7
Telecommunication apparatus	53	83.5	83.3	82.9	-0.3	-0.5	-4.9
Electrical machinery apparatus nes, electrical parts	3,456	96.3	91.6	91.1	-4.9	-0.6	-6.6
Road vehicles	111	102.3	102.1	102.0	-0.2	-	-
Miscellaneous Manufactured Articles	802	103.7	103.2	102.4	-0.5	-0.7	1.4
Prefab building, sanitary plumbing, lighting nes	7	105.6	105.6	105.6	-	-	7.4
Furniture, bedding, mattresses, cushions & others	23	105.6	105.7	105.6	-	-0.1	1.5
Travel goods, handbags & similar containers	39	101.0	100.8	100.5	-0.1	-0.3	-2.5
Articles of apparel & clothing accessories	25	101.1	101.2	100.7	0.1	-0.4	1.1
Footwear	14	103.9	104.1	104.1	0.2	-	4.8
Professional scientific & controlling instruments	409	100.4	99.7	98.5	-0.7	-1.2	-2.1
Photographic & optical goods nes; watches & clocks	75	106.8	106.6	106.3	-0.1	-0.3	6.4
Miscellaneous manufactured articles nes	211	109.7	109.1	108.7	-0.6	-0.3	6.7

Figures may not sum to total due to rounding.

**Table 3 Singapore Manufactured Products Price Index**

Section	All Items	Non-oil Items	Food & Live Animals	Beverages & Tobacco	Crude Materials	Mineral Fuels	Animal & Vegetable Oils, Fats & Waxes	Chemicals & Chemical Products	Manufactured Goods	Machinery & Transport Equipment	Misc. Manufactured Articles
Weights	<b>10,000</b>	<b>8,586</b>	256	31	56	1,414	14	2,165	284	4,897	883
<b>Index (2018=100)</b>											
2017	<b>95.8</b>	<b>98.6</b>	99.5	98.4	94.7	83.0	119.3	92.5	97.8	103.0	97.2
2018	<b>100.0</b>	<b>100.0</b>	100.0	100.0	100.0	100.0	100.0	100.0	100.0	100.0	100.0
2019	<b>96.7</b>	<b>97.6</b>	99.8	103.5	94.5	91.3	88.5	95.3	102.2	97.8	100.2
2020	<b>90.0</b>	<b>95.4</b>	101.1	103.6	89.2	57.3	95.8	87.3	105.7	97.1	100.6
2019											
Dec	<b>95.6</b>	<b>97.1</b>	101.2	104.0	93.3	86.8	88.4	92.4	105.8	98.0	99.3
2020											
Jan	<b>94.7</b>	<b>96.9</b>	101.2	103.6	93.8	80.8	94.0	93.3	107.4	97.4	99.0
Feb	<b>94.6</b>	<b>98.0</b>	101.6	103.6	94.7	73.7	97.7	92.4	107.7	99.4	100.3
Mar	<b>92.4</b>	<b>99.1</b>	102.5	103.6	95.3	52.1	100.8	89.5	106.6	102.2	101.9
Apr	<b>88.1</b>	<b>96.5</b>	102.2	103.6	92.8	36.8	99.1	85.4	105.7	99.5	102.3
May	<b>89.3</b>	<b>96.8</b>	102.0	103.6	92.0	43.9	100.3	87.8	106.0	99.1	102.0
Jun	<b>90.1</b>	<b>95.9</b>	101.6	103.6	91.5	54.7	91.0	88.0	104.9	97.5	101.8
Jul	<b>90.0</b>	<b>95.3</b>	101.2	103.6	82.2	57.8	88.9	85.7	105.1	97.6	101.5
Aug	<b>88.3</b>	<b>93.4</b>	100.8	103.6	80.0	57.5	90.4	82.7	104.9	95.8	100.7
Sep	<b>88.4</b>	<b>93.9</b>	100.5	103.6	82.9	54.9	94.5	84.5	104.7	96.0	100.4
Oct	<b>88.8</b>	<b>94.3</b>	100.2	103.6	86.2	55.0	95.4	84.8	105.3	96.7	99.8
Nov	<b>87.3</b>	<b>92.3</b>	100.0	103.6	88.2	57.5	95.7	86.2	105.4	92.4	99.4
Dec	<b>88.0</b>	<b>92.0</b>	99.8	103.6	91.1	63.5	101.5	87.4	105.0	91.7	98.4
<b>Percentage Change over same period of previous year (%)</b>											
2018	<b>4.4</b>	<b>1.4</b>	0.5	1.6	5.6	20.5	-16.2	8.1	2.3	-2.9	2.9
2019	<b>-3.3</b>	<b>-2.4</b>	-0.2	3.5	-5.5	-8.7	-11.5	-4.7	2.2	-2.2	0.2
2020	<b>-6.9</b>	<b>-2.3</b>	1.3	0.1	-5.6	-37.2	8.2	-8.3	3.5	-0.7	0.4
2019											
Dec	<b>-1.2</b>	<b>-1.7</b>	0.9	4.0	-8.0	2.0	-3.2	-7.5	4.1	0.5	-1.5
2020											
Jan	<b>-1.1</b>	<b>-0.5</b>	1.7	1.8	-4.6	-5.0	4.4	-4.2	6.2	0.7	-1.1
Feb	<b>-2.1</b>	<b>0.6</b>	2.2	1.8	-2.3	-19.7	9.0	-4.9	6.7	2.6	0.5
Mar	<b>-5.8</b>	<b>0.6</b>	2.8	1.8	-1.0	-45.6	13.2	-7.3	5.2	3.3	2.0
Apr	<b>-8.9</b>	<b>0.3</b>	3.2	-0.6	-0.4	-62.9	10.6	-10.9	5.6	4.4	2.5
May	<b>-8.2</b>	<b>-0.4</b>	2.5	-0.5	-2.2	-55.1	12.3	-8.8	5.6	2.5	1.0
Jun	<b>-5.7</b>	<b>-0.6</b>	2.4	-0.4	-1.7	-38.7	2.5	-6.9	4.2	1.3	1.2
Jul	<b>-6.4</b>	<b>-1.2</b>	2.0	-0.4	-11.4	-39.0	0.7	-8.8	3.5	1.3	1.6
Aug	<b>-9.9</b>	<b>-6.1</b>	1.2	-0.4	-15.1	-35.6	2.5	-13.4	2.9	-4.9	-0.6
Sep	<b>-9.8</b>	<b>-5.0</b>	0.5	-0.4	-12.0	-40.5	9.3	-11.3	1.5	-3.9	-0.7
Oct	<b>-8.3</b>	<b>-4.0</b>	-0.4	-0.4	-8.7	-37.8	9.4	-10.2	1.3	-2.5	-0.6
Nov	<b>-8.8</b>	<b>-5.4</b>	-1.0	-0.4	-6.1	-32.4	9.6	-8.1	0.3	-5.9	-0.2
Dec	<b>-7.9</b>	<b>-5.2</b>	-1.3	-0.4	-2.3	-26.9	14.7	-5.4	-0.8	-6.4	-1.0

**Table 4 Domestic Supply Price Index**

Section	All Items	Non-oil Items	Food & Live Animals	Beverages & Tobacco	Crude Materials	Mineral Fuels	Animal & Vegetable Oils, Fats & Waxes	Chemicals & Chemical Products	Manufactured Goods	Machinery & Transport Equipment	Misc. Manufactured Articles
Weights	<b>10,000</b>	<b>7,212</b>	319	30	85	2,788	42	1,142	490	4,302	802
<b>Index (2018=100)</b>											
2017	<b>94.0</b>	<b>100.2</b>	101.0	98.9	98.8	79.7	114.1	95.5	96.8	102.2	101.3
2018	<b>100.0</b>	<b>100.0</b>	100.0	100.0	100.0	100.0	100.0	100.0	100.0	100.0	100.0
2019	<b>96.7</b>	<b>98.2</b>	101.3	102.1	98.4	93.0	90.9	94.1	101.5	98.2	101.0
2020	<b>88.4</b>	<b>97.6</b>	103.6	104.2	97.2	64.4	103.6	87.7	102.2	98.0	104.0
2019											
Dec	<b>95.2</b>	<b>97.8</b>	102.7	102.2	98.5	88.5	99.0	90.4	102.3	98.2	101.0
2020											
Jan	<b>95.4</b>	<b>97.8</b>	103.6	102.7	98.9	89.3	103.4	91.3	101.7	97.9	101.1
Feb	<b>95.1</b>	<b>99.5</b>	103.7	103.7	99.5	83.9	102.5	92.5	103.0	100.0	102.6
Mar	<b>89.4</b>	<b>101.3</b>	103.9	104.2	100.0	58.6	100.3	90.7	103.1	103.0	104.9
Apr	<b>83.1</b>	<b>99.3</b>	105.1	104.9	98.6	41.1	98.0	85.7	102.5	100.9	106.1
May	<b>83.7</b>	<b>98.5</b>	104.9	104.8	98.3	45.5	95.8	85.1	102.3	99.7	105.8
Jun	<b>86.5</b>	<b>97.6</b>	103.6	105.2	97.9	58.0	97.0	86.4	101.8	98.2	104.8
Jul	<b>88.6</b>	<b>97.8</b>	103.8	104.7	94.4	64.9	98.4	86.5	102.0	98.5	104.7
Aug	<b>88.2</b>	<b>96.6</b>	103.2	104.6	93.5	66.5	102.1	86.2	101.4	96.7	104.4
Sep	<b>87.3</b>	<b>96.8</b>	102.8	104.9	94.9	62.8	104.2	86.3	101.3	97.1	104.1
Oct	<b>87.4</b>	<b>96.9</b>	102.2	103.4	96.3	62.9	108.2	86.5	101.8	97.4	103.7
Nov	<b>86.9</b>	<b>94.8</b>	102.8	103.4	96.9	66.2	113.1	86.9	102.6	93.6	103.2
Dec	<b>88.6</b>	<b>94.7</b>	103.1	103.4	97.8	72.9	119.6	88.2	102.7	93.1	102.4
<b>Percentage Change over same period of previous year (%)</b>											
2018	<b>6.4</b>	<b>-0.2</b>	-1.0	1.1	1.2	25.5	-12.4	4.7	3.3	-2.1	-1.3
2019	<b>-3.3</b>	<b>-1.8</b>	1.3	2.1	-1.6	-7.0	-9.1	-5.9	1.5	-1.8	1.0
2020	<b>-8.7</b>	<b>-0.6</b>	2.2	2.1	-1.1	-30.7	13.9	-6.9	0.7	-0.2	2.9
2019											
Dec	<b>-1.1</b>	<b>-0.7</b>	2.3	2.0	-2.1	-2.4	9.5	-6.2	1.4	-	0.6
2020											
Jan	<b>0.6</b>	<b>0.1</b>	2.9	1.4	-0.3	2.0	13.1	-4.2	1.7	0.5	0.9
Feb	<b>-1.5</b>	<b>1.6</b>	3.8	2.5	1.0	-10.1	12.5	-3.4	2.1	2.4	2.8
Mar	<b>-9.3</b>	<b>2.3</b>	4.2	2.8	1.6	-39.9	11.5	-5.2	1.5	3.5	5.0
Apr	<b>-15.0</b>	<b>2.3</b>	5.0	2.9	1.0	-58.7	8.1	-10.1	1.4	4.8	6.0
May	<b>-14.6</b>	<b>0.7</b>	4.2	2.7	0.1	-54.0	6.7	-10.8	0.7	2.6	4.8
Jun	<b>-9.6</b>	<b>0.3</b>	2.5	3.2	0.2	-36.9	9.7	-7.8	0.6	1.5	3.7
Jul	<b>-8.4</b>	<b>0.9</b>	2.2	2.3	-3.1	-32.5	12.9	-7.0	1.0	2.2	3.7
Aug	<b>-9.3</b>	<b>-3.6</b>	1.3	1.7	-5.6	-25.9	14.2	-8.6	-	-4.2	1.8
Sep	<b>-10.5</b>	<b>-2.8</b>	0.6	2.0	-3.8	-31.9	16.4	-8.7	-0.8	-2.9	1.6
Oct	<b>-9.7</b>	<b>-2.2</b>	-0.6	1.0	-2.2	-30.8	20.3	-7.6	-0.4	-2.1	1.7
Nov	<b>-9.4</b>	<b>-3.5</b>	0.5	1.1	-1.6	-26.0	20.2	-6.1	0.3	-5.0	1.9
Dec	<b>-6.9</b>	<b>-3.2</b>	0.4	1.2	-0.7	-17.7	20.7	-2.4	0.4	-5.2	1.4

**NOTATIONS**

- nes not elsewhere specified
- nil or negligible

**NOTES**

The Singapore Manufactured Products and Domestic Supply Price Indices report contains statistics that are the most recent available at the time of its preparation.

Some statistics, particularly those for the most recent time periods, are provisional and may be subject to revision in later issues.