



SINGAPORE MANUFACTURED PRODUCTS & DOMESTIC SUPPLY PRICE INDICES

January 2019

**SINGAPORE MANUFACTURED PRODUCTS &
DOMESTIC SUPPLY PRICE INDICES, January 2019**
ISSN 2591-7447

© Department of Statistics, Ministry of Trade & Industry, Republic of Singapore

Reproducing or quoting any part of this publication is permitted, provided this publication is accredited as the source. Please refer to the Statistics Singapore Website Terms of Use (<http://www.singstat.gov.sg/terms-of-use>) for more details on the conditions of use of this publication.

Statistical activities conducted by the Singapore Department of Statistics are governed by the provisions of the Statistics Act (Cap. 317). The Act guarantees the confidentiality of information collected from individuals and companies. It spells out the legislative authority and responsibility of the Chief Statistician. The Act is available in the Department's Website (www.singstat.gov.sg).

SINGAPORE MANUFACTURED PRODUCTS PRICE INDEX (2012 = 100)

January 2019

Singapore Manufactured Products Price Index

Change over previous month

The Singapore Manufactured Products Price Index declined 1.4 per cent in January 2019, extending the 2.4 per cent decrease in December 2018. The Oil index declined 0.1 per cent, after the 13.4 per cent fall in December. The Non-oil index fell 1.6 per cent in January 2019, after decreasing 0.1 per cent in the previous month.

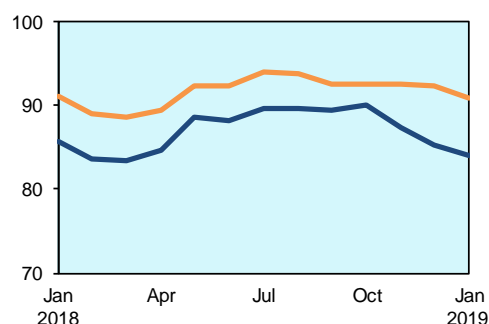
Declines in the Non-oil sub-indices were led by the Chemicals & Chemical Products (-3.7 per cent) and Miscellaneous Manufactured Articles (-1.0 per cent) indices, due mainly to lower prices of organic chemicals and measuring instruments respectively. The declines were partially offset by the increase in the Animal & Vegetable Oils (6.0 per cent) index.

Change over same period of previous year

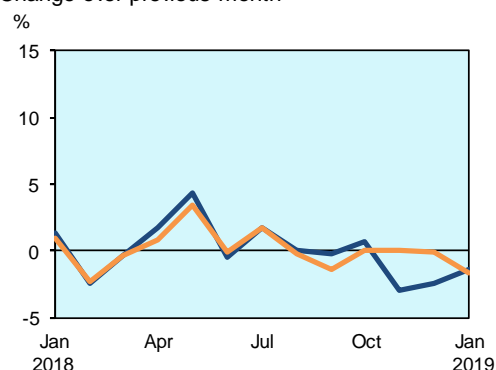
The Singapore Manufactured Products Price Index fell 1.9 per cent in January 2019 over the previous year, in contrast to the 0.8 per cent increase in December 2018. The Oil and Non-oil indices decreased 10.3 per cent and 0.2 per cent respectively.

Decreases in the Animal & Vegetable Oils (-13.0 per cent), Chemicals & Chemical Products (-1.3 per cent) and Crude Materials (-1.3 per cent) indices were partially moderated by increases in the Beverages & Tobacco (1.5 per cent), Food & Live Animals (1.3 per cent), Miscellaneous Manufactured Articles (1.3 per cent), Manufactured Goods (0.4 per cent) and Machinery & Transport Equipment (0.1 per cent) indices.

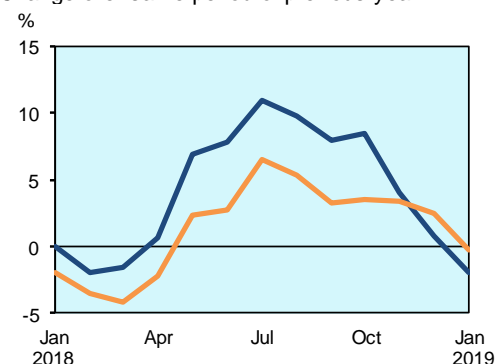
Singapore
Manufactured Products Price Index
(2012=100)



Change over previous month



Change over same period of previous year



DOMESTIC SUPPLY PRICE INDEX (2012 = 100)

January 2019

Domestic Supply Price Index

Change over previous month

The Domestic Supply Price Index declined 0.6 per cent in January 2019 extending the 5.3 per cent decrease in the previous month. The Oil index rose 0.1 per cent in January, in contrast to the 15.4 per cent fall in December 2018. The Non-oil index fell 0.8 per cent, following the 0.9 per cent decline in the previous month.

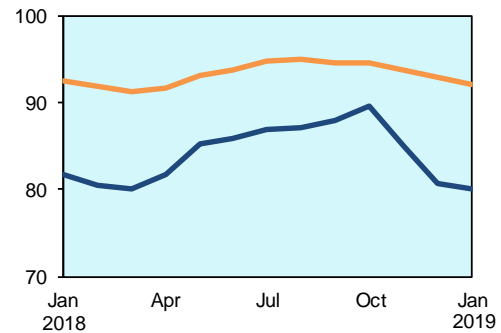
Among the Non-oil sub-indices, decreases were led by the Chemicals & Chemical Products (-2.2 per cent) index, due mainly to lower prices of organic chemicals, and the Machinery & Transport Equipment (-0.5 per cent) index. The declines were partially moderated by the increases in the Animal & Vegetable Oils (4.5 per cent) and Food & Live Animals (0.1 per cent) indices.

Change over same period of previous year

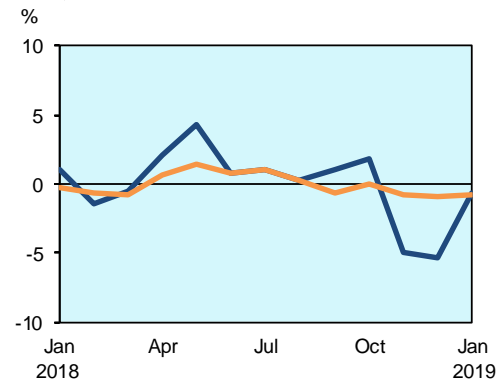
The Domestic Supply Price Index declined 1.9 per cent in January 2019 from a year ago, extending the 0.4 per cent decrease in December 2018. The Oil and Non-oil indices index fell 5.8 per cent and 0.4 per cent respectively.

Lower prices of Animal & Vegetable Oils (-11.7 per cent), Chemicals & Chemical Products (-2.4 per cent), Crude Materials (-0.7 per cent), Machinery & Transport Equipment (-0.2 per cent) and Miscellaneous Manufactured Articles (-0.2 per cent) were partially offset by higher prices of Manufactured Goods (1.5 per cent), Food & Live Animals (1.2 per cent) and Beverages & Tobacco (0.9 per cent).

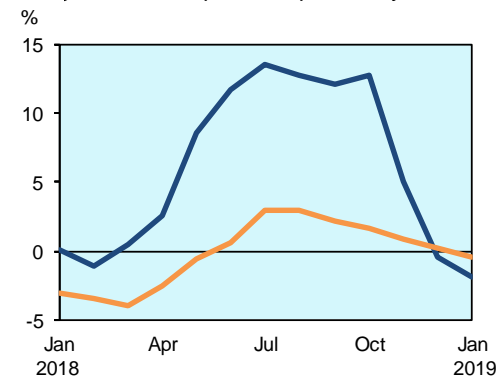
Domestic Supply Price Index (2012=100) — Overall — Non-oil



Change over previous month



Change over same period of previous year



TECHNICAL NOTE

The *Singapore Manufactured Products Price Index (SMPPPI)* monitors price changes of locally manufactured commodities. The weights of the index are derived from the distribution of local production by commodity in 2011. Ex-factory prices are obtained from principal manufacturers of the items concerned.

The *Domestic Supply Price Index (DSPI)* is designed to measure the changes in the price level of goods manufactured locally or imported which are retained for use in the domestic economy by the government, business or household sectors. For imported products, the prices refer to those paid by importers in bringing the goods into Singapore, commonly referred to as c.i.f. prices. In the case of Singapore manufactured products, the quotations used are ex-factory prices. The weight for each commodity item is proportional to the value of its total supply or availability in the domestic market in 2011.

Index Formula

The 2012-based series is compiled using the 'modified Laspeyres' formula where the weight reference period of 2011 preceded the price reference period of 2012. The geometric mean (GM) formula has been adopted in the computation of unweighted elementary aggregate price indices. The arithmetic mean (AM) formula is applied in compiling indices at higher levels of aggregation where weights of specific sub-indices are available.

An Information Paper on the Rebasing of Singapore Manufactured Products and Domestic Supply Price Indices (2012=100) is available on the department's website at <https://www.singstat.gov.sg/ppi#Producer-and-International-Trade-Prices>.

Measurement of Changes in Price Indices

Change over previous month compares the index of the month with that of the preceding month. Such comparisons measure the change in the price index between two consecutive months. They serve as useful short-term indicators of the price movements.

Change over same period of previous year measures change in the index over a twelve-month period. Such comparisons compare the movement in the price index between similar months in two consecutive years.

Index Revision

The indices may be revised when late returns and amendments received from respondents are incorporated.

Dissemination of Data

The Singapore Manufactured Products and Domestic Supply Price Indices are available on the SingStat Website (www.singstat.gov.sg/tablebuilder). Excel tables for this month's report are available at <https://www.singstat.gov.sg/publications/economy/producer-price-indices> or through the QR code below:



Table 1 Singapore Manufactured Products Price Index

January 2019

Commodity section / division	Weights	Index (2012=100)			% Change		
					Dec 2018	Jan 2019	Jan 2019
		Nov 2018	Dec 2018	Jan 2019	Nov 2018	Dec 2018	Jan 2018
All Items	10,000	87.4	85.2	84.1	-2.4	-1.4	-1.9
Non-oil Items	7,782	92.5	92.4	90.9	-0.1	-1.6	-0.2
Food & Live Animals	266	103.7	103.6	103.3	-	-0.3	1.3
Meat & meat preparations	22	97.9	98.0	98.6	0.1	0.7	-0.6
Dairy products & birds' eggs	58	94.7	94.6	94.3	-0.1	-0.4	-0.5
Fish seafood & preparations	7	116.5	116.5	116.4	-	-0.1	-2.4
Cereals & cereal preparations	44	110.7	110.9	110.9	0.2	-	2.7
Vegetables & fruit	4	115.3	115.3	115.3	-	-	10.6
Sugar, sugar preparations & honey	2	107.7	106.7	105.2	-0.9	-1.4	3.6
Coffee, tea, cocoa, spices & manufactures	31	103.6	103.2	100.9	-0.4	-2.3	1.9
Animal feeding stuff (excl unmilled cereals)	9	104.3	104.5	104.4	0.1	-0.1	-1.0
Miscellaneous food preparations	89	105.8	105.7	105.6	-0.1	-0.1	2.0
Beverages & Tobacco	54	99.4	99.4	99.3	-	-0.1	1.5
Beverages	27	96.9	96.9	96.9	-	-	0.9
Tobacco & manufactures	27	101.8	101.8	101.7	-0.1	-0.1	2.1
Crude Materials (excl fuels)	7	114.3	114.4	114.2	0.1	-0.1	-1.3
Cork & wood	1	126.0	126.0	126.0	-	-	1.0
Crude fertilizers & minerals	3	129.1	129.4	129.0	0.2	-0.3	-2.7
Metalliferous ores & metal scrap	3	98.1	98.1	98.1	-	-	-
Mineral Fuels, Lubricants & Related Materials	2,218	69.3	60.0	60.0	-13.4	-0.1	-10.3
Petroleum & products & related materials	2,187	69.4	60.1	60.1	-13.4	-	-10.1
Gas	31	65.8	53.2	52.0	-19.2	-2.2	-24.6
Animal & Vegetable Oils, Fats & Waxes	28	76.8	75.2	79.7	-2.1	6.0	-13.0
Fixed vegetable fats & oils	16	85.6	83.6	92.0	-2.3	10.1	-18.6
Animal & vegetable oils, fats & waxes nes	12	65.3	64.1	63.5	-1.8	-0.9	-
Chemicals & Chemical Products	2,335	98.9	101.1	97.3	2.2	-3.7	-1.3
Organic chemicals	1,402	100.4	105.1	100.1	4.7	-4.7	-2.7
Inorganic chemicals	56	85.4	83.8	82.8	-1.8	-1.3	-1.1
Dyeing, tanning & colouring materials	33	94.8	94.9	94.3	0.1	-0.6	1.2
Medicinal & pharmaceutical products	157	100.8	100.6	102.1	-0.1	1.5	2.9
Essential oils & perfume; toilet cleaning products	64	109.1	108.8	107.0	-0.2	-1.7	-2.5
Plastics in primary forms	323	101.7	96.5	91.9	-5.1	-4.8	0.2
Plastics in non-primary forms	38	92.7	92.2	92.2	-0.5	-	-0.3
Chemical materials & products nes	262	88.4	89.3	88.2	1.0	-1.2	3.0
Manufactured Goods	439	98.3	98.3	97.8	-	-0.5	0.4
Leather manufactures nes	5	140.8	140.8	139.5	-	-0.9	-0.9
Rubber manufactures nes	18	114.1	113.9	113.2	-0.2	-0.6	1.2
Wood & cork manufactures (excl furniture)	8	103.8	103.8	103.8	-	-	-
Paper manufactures	44	101.0	100.7	100.8	-0.3	0.1	2.3
Textile manufactures	10	104.3	104.3	104.3	-	-	-
Non-metal mineral manufactures nes	77	98.0	97.2	97.4	-0.8	0.1	0.4
Iron & steel	63	81.7	82.7	82.3	1.2	-0.5	9.2
Non-ferrous metals	31	104.9	104.4	103.2	-0.5	-1.1	-1.3
Manufactures of metals nes	183	99.3	99.4	98.7	0.2	-0.7	-1.9
Machinery & Transport Equipment	3,900	86.0	84.7	84.2	-1.6	-0.6	0.1
Power-generating machinery & equipment	33	86.7	86.5	85.9	-0.2	-0.7	-15.1
Machinery specialized for particular industries	376	87.2	87.1	86.6	-0.1	-0.6	-5.2
Metal working machinery	21	96.2	97.8	97.8	1.6	-	1.3
General industrial machinery	167	99.3	99.2	99.0	-0.1	-0.2	-0.2
Office machines & data-processing machines	1,143	79.1	78.6	78.3	-0.6	-0.5	3.9
Telecommunication apparatus	49	98.3	98.2	98.4	-0.2	0.3	0.5
Electrical machinery apparatus nes, electrical parts	2,076	87.8	85.5	84.8	-2.6	-0.7	-0.2
Road vehicles	35	108.0	108.2	108.7	0.2	0.5	-6.9
Miscellaneous Manufactured Articles	753	98.5	98.4	97.4	-0.1	-1.0	1.3
Furniture, bedding, mattresses, cushions & others	31	117.5	117.5	117.5	-	-	-0.6
Travel goods, handbags & similar containers	1	118.5	118.3	117.5	-0.2	-0.6	5.8
Articles of apparel & clothing accessories	27	95.0	94.9	94.7	-0.1	-0.2	0.6
Professional scientific & controlling instruments	327	93.4	93.1	91.0	-0.4	-2.3	0.1
Photographic & optical goods nes; watches & clocks	21	79.0	79.0	78.8	-0.1	-0.2	-2.7
Miscellaneous manufactured articles nes	346	102.9	103.1	103.0	0.1	-	2.8

Table 2 Domestic Supply Price Index

January 2019

Commodity section / division	Weights	Index (2012=100)			% Change		
		Nov 2018	Dec 2018	Jan 2019	Dec 2018	Jan 2019	Jan 2019
					Nov 2018	Dec 2018	Jan 2018
All Items	10,000	85.2	80.6	80.2	-5.3	-0.6	-1.9
Non-oil Items	6,300	93.8	93.0	92.2	-0.9	-0.8	-0.4
Food & Live Animals	327	101.3	101.5	101.6	0.3	0.1	1.2
Live animals	14	89.2	91.0	92.9	2.0	2.1	-3.7
Meat & meat preparations	44	97.3	97.6	98.0	0.2	0.4	-0.9
Dairy products & birds' eggs	72	97.0	97.7	97.9	0.7	0.3	0.9
Fish seafood & preparations	23	112.7	113.3	114.3	0.5	0.9	4.2
Cereals & cereal preparations	49	108.1	108.1	108.1	-	-	4.4
Vegetables & fruit	26	109.9	111.0	110.6	1.0	-0.4	-0.2
Sugar, sugar preparations & honey	13	81.4	80.1	80.0	-1.6	-0.2	-4.5
Coffee, tea, cocoa, spices & manufactures	27	95.4	94.8	94.2	-0.6	-0.7	0.8
Animal feeding stuff (excl unmilled cereals)	4	108.3	108.2	107.2	-0.1	-0.9	-0.4
Miscellaneous food preparations	55	105.2	105.1	104.7	-0.1	-0.4	2.3
Beverages & Tobacco	44	101.6	101.4	100.9	-0.1	-0.5	0.9
Beverages	31	99.3	99.2	98.5	-0.1	-0.7	0.2
Tobacco & manufactures	13	106.9	106.8	106.5	-0.1	-0.3	2.6
Crude Materials (excl fuels)	59	87.7	87.6	87.5	-0.2	-0.1	-0.7
Hides, skins & furskins raw	2	87.5	87.9	87.7	0.4	-0.2	2.0
Oil seeds & oleaginous fruits	1	96.1	95.7	94.6	-0.4	-1.1	1.7
Crude rubber	2	100.1	99.8	98.7	-0.4	-1.0	10.5
Cork & wood	5	92.1	92.1	91.9	-	-0.2	1.3
Textile fibres & their wastes	1	98.6	98.5	97.4	-0.2	-1.1	-4.7
Crude fertilizers & minerals	31	81.0	80.8	80.8	-0.1	-	-0.4
Metalliferous ores & metal scrap	11	92.6	92.3	92.7	-0.3	0.5	-3.5
Crude animal & vegetable materials nes	6	104.1	104.1	102.9	-	-1.2	-1.8
Mineral Fuels, Lubricants & Related Materials	3,700	70.4	59.6	59.6	-15.4	0.1	-5.8
Petroleum & products & related materials	3,527	69.4	58.7	59.0	-15.4	0.5	-5.9
Gas	173	90.4	76.7	72.8	-15.2	-5.1	-4.6
Animal & Vegetable Oils, Fats & Waxes	44	63.1	62.7	65.5	-0.5	4.5	-11.7
Fixed vegetable fats & oils	32	61.6	61.5	65.5	-0.1	6.5	-15.3
Animal & vegetable oils, fats & waxes nes	12	67.2	66.1	65.5	-1.6	-0.9	-
Chemicals & Chemical Products	1,181	90.9	89.9	87.8	-1.2	-2.2	-2.4
Organic chemicals	612	88.6	86.7	84.2	-2.0	-2.9	-8.2
Inorganic chemicals	64	89.5	88.1	87.5	-1.6	-0.7	-3.3
Dyeing, tanning & colouring materials	17	92.2	92.3	91.8	0.1	-0.5	3.4
Medicinal & pharmaceutical products	102	82.0	81.9	78.8	-0.1	-3.9	-0.1
Essential oils & perfume; toilet cleaning products	30	98.2	97.6	97.7	-0.5	-	-0.3
Plastics in primary forms	92	98.7	97.1	93.1	-1.6	-4.0	4.9
Plastics in non-primary forms	24	99.1	98.8	98.6	-0.2	-0.2	1.8
Chemical materials & products nes	240	96.4	96.8	96.4	0.5	-0.4	8.2
Manufactured Goods	668	96.1	95.8	95.4	-0.3	-0.4	1.5
Leather manufactures nes	2	140.8	140.8	139.5	-	-0.9	-0.9
Rubber manufactures nes	18	96.5	96.4	95.8	-0.2	-0.5	1.4
Wood & cork manufactures (excl furniture)	7	104.2	104.2	104.2	-	-	-
Paper manufactures	67	105.0	104.6	104.3	-0.4	-0.3	3.9
Textile manufactures	11	99.5	99.5	99.2	-0.1	-0.3	2.0
Non-metal mineral manufactures nes	130	97.4	96.8	96.7	-0.6	-0.1	1.8
Iron & steel	148	91.0	91.2	90.7	0.2	-0.5	8.6
Non-ferrous metals	118	90.6	89.9	89.0	-0.8	-1.0	-8.1
Manufactures of metals nes	167	98.9	98.8	98.6	-0.1	-0.2	1.9
Machinery & Transport Equipment	3,229	93.0	91.8	91.4	-1.3	-0.5	-0.2
Power-generating machinery & equipment	176	132.3	131.8	136.0	-0.4	3.1	5.6
Machinery specialized for particular industries	188	96.5	96.2	95.8	-0.3	-0.4	1.2
Metal working machinery	6	103.1	103.2	103.4	-	0.2	3.5
General industrial machinery	149	100.9	100.9	100.8	-0.1	-0.1	-0.1
Office machines & data-processing machines	234	98.5	98.3	97.8	-0.1	-0.6	0.9
Telecommunication apparatus	233	65.6	65.2	64.8	-0.7	-0.6	-4.8
Electrical machinery apparatus nes, electrical parts	2,176	90.7	89.0	88.2	-1.8	-0.9	-0.9
Road vehicles	67	111.4	112.8	111.0	1.2	-1.6	1.5
Miscellaneous Manufactured Articles	748	98.7	98.7	97.5	-	-1.2	-0.2
Prefab building, sanitary plumbing, lighting nes	10	101.0	101.0	102.4	0.1	1.4	1.8
Furniture, bedding, mattresses, cushions & others	51	111.3	111.3	111.3	-	-	0.3
Travel goods, handbags & similar containers	22	118.5	118.4	119.8	-0.1	1.1	1.5
Articles of apparel & clothing accessories	24	109.2	110.2	109.7	0.9	-0.4	2.2
Footwear	14	106.1	106.1	105.9	-	-0.2	-
Professional scientific & controlling instruments	312	100.1	99.7	97.3	-0.4	-2.4	-0.2
Photographic & optical goods nes; watches & clocks	93	95.2	95.3	95.2	-	-0.1	0.9
Miscellaneous manufactured articles nes	222	91.7	92.1	91.4	0.5	-0.8	-1.2

Table 3 Singapore Manufactured Products Price Index

Section	All Items	Non-oil Items	Food & Live Animals	Beverages & Tobacco	Crude Materials	Mineral Fuels	Animal & Vegetable Oils, Fats & Waxes	Chemicals & Chemical Products	Manu- factured Goods	Machinery & Transport Equipment	Misc. Manu- factured Articles
Weights	10,000	7,782	266	54	7	2,218	28	2,335	439	3,900	753
Index (2012=100)											
2015	85.0	92.7	103.5	101.4	104.9	58.3	90.1	88.1	98.0	93.7	93.8
2016	80.4	89.8	102.6	101.8	109.0	47.1	95.2	86.4	94.3	89.7	92.8
2017	83.4	90.4	102.5	97.3	108.8	58.9	99.9	90.8	95.9	87.8	94.6
2018	87.1	91.7	103.0	98.9	114.9	71.0	83.8	98.1	98.0	85.3	97.3
2018											
Jan	85.7	91.1	102.0	97.8	115.7	66.9	91.6	98.6	97.4	84.1	96.2
Feb	83.7	89.0	102.0	98.4	115.5	64.9	90.6	92.8	97.7	83.3	96.4
Mar	83.3	88.7	102.1	98.1	115.6	64.5	89.5	92.8	97.7	82.6	96.3
Apr	84.8	89.4	102.1	98.9	115.2	68.4	89.8	93.8	97.6	83.5	96.2
May	88.5	92.4	102.6	99.0	115.4	74.8	89.1	101.9	98.0	84.4	97.2
Jun	88.1	92.3	102.9	99.0	114.8	73.3	83.3	99.0	98.5	86.0	96.9
Jul	89.6	94.0	103.5	99.2	114.6	74.3	80.5	102.6	98.2	87.0	97.5
Aug	89.6	93.8	103.7	99.2	114.5	75.2	81.8	100.3	98.2	87.8	98.2
Sep	89.4	92.5	103.6	99.2	114.5	78.7	78.7	97.7	98.2	86.9	97.8
Oct	90.0	92.5	103.6	99.2	114.7	81.2	78.2	97.8	98.3	86.8	98.4
Nov	87.4	92.5	103.7	99.4	114.3	69.3	76.8	98.9	98.3	86.0	98.5
Dec	85.2	92.4	103.6	99.4	114.4	60.0	75.2	101.1	98.3	84.7	98.4
2019											
Jan	84.1	90.9	103.3	99.3	114.2	60.0	79.7	97.3	97.8	84.2	97.4
Percentage Change over same period of previous year (%)											
2016	-5.5	-3.1	-0.9	0.4	3.8	-19.2	5.6	-2.0	-3.8	-4.3	-1.1
2017	3.8	0.7	-0.2	-4.4	-0.1	25.0	5.0	5.1	1.6	-2.2	1.9
2018	4.4	1.4	0.5	1.6	5.6	20.5	-16.2	8.1	2.3	-2.9	2.9
2018											
Jan	-	-2.0	-1.6	0.3	6.4	10.9	-10.2	5.6	2.3	-8.1	2.7
Feb	-1.9	-3.5	-1.6	0.9	6.4	6.5	-10.7	0.1	2.7	-7.9	2.9
Mar	-1.6	-4.2	-1.1	0.6	6.6	12.9	-12.5	-0.6	2.5	-8.9	3.1
Apr	0.7	-2.2	-1.1	1.4	6.4	16.7	-13.2	0.9	2.4	-5.8	2.8
May	6.9	2.3	-0.1	1.4	6.8	32.5	-13.2	13.8	3.2	-4.9	4.4
Jun	7.8	2.8	0.4	1.5	6.5	37.4	-18.2	12.5	3.9	-2.9	4.3
Jul	10.9	6.5	1.5	1.9	4.6	36.0	-20.4	17.9	3.0	0.9	5.7
Aug	9.8	5.3	2.1	1.6	4.8	34.9	-16.8	11.8	2.8	2.4	3.6
Sep	7.9	3.3	2.0	1.5	4.7	31.7	-18.9	8.1	1.3	1.5	0.9
Oct	8.5	3.5	1.9	2.7	5.1	34.0	-19.3	9.7	1.1	0.9	1.3
Nov	4.1	3.4	1.8	2.9	4.7	7.8	-20.5	10.4	0.9	0.1	1.5
Dec	0.8	2.5	1.7	2.8	5.0	-7.4	-21.2	8.1	1.2	-0.6	1.6
2019											
Jan	-1.9	-0.2	1.3	1.5	-1.3	-10.3	-13.0	-1.3	0.4	0.1	1.3

Table 4 Domestic Supply Price Index

Section	All Items	Non-oil Items	Food & Live Animals	Beverages & Tobacco	Crude Materials	Mineral Fuels	Animal & Vegetable Oils, Fats & Waxes	Chemicals & Chemical Products	Manufactured Goods	Machinery & Transport Equipment	Misc. Manufactured Articles
Weights	10,000	6,300	327	44	59	3,700	44	1,181	668	3,229	748
Index (2012=100)											
2015	79.7	95.9	101.7	101.9	96.5	52.1	74.2	86.2	94.8	98.6	98.5
2016	74.1	92.6	99.7	101.5	87.9	42.6	78.0	82.4	89.1	95.1	99.0
2017	79.4	93.6	101.6	99.8	87.1	55.2	79.9	87.0	92.5	94.2	99.6
2018	84.4	93.4	100.6	100.9	88.2	69.2	70.0	91.1	95.6	92.2	98.3
2018											
Jan	81.8	92.6	100.4	99.9	88.1	63.3	74.3	90.0	94.0	91.5	97.7
Feb	80.6	92.0	100.3	100.1	88.2	61.2	74.6	88.0	94.3	90.9	97.9
Mar	80.1	91.3	98.8	99.9	88.0	61.2	73.5	87.8	94.3	89.8	97.7
Apr	81.8	91.8	98.8	100.4	88.2	64.8	73.4	88.6	94.6	90.6	97.8
May	85.3	93.1	99.7	100.6	88.7	72.1	73.2	92.3	95.8	91.3	98.3
Jun	86.0	93.9	99.9	100.8	89.1	72.5	71.4	92.7	96.3	92.6	98.1
Jul	86.9	94.8	101.2	101.5	88.3	73.5	69.6	93.9	96.5	93.7	98.4
Aug	87.2	95.1	101.6	101.5	87.9	73.8	69.3	93.7	96.5	94.3	98.6
Sep	88.1	94.6	101.6	101.4	88.0	77.1	67.9	93.0	96.5	93.5	98.4
Oct	89.7	94.6	101.8	101.4	88.4	81.3	66.8	92.8	96.5	93.5	99.0
Nov	85.2	93.8	101.3	101.6	87.7	70.4	63.1	90.9	96.1	93.0	98.7
Dec	80.6	93.0	101.5	101.4	87.6	59.6	62.7	89.9	95.8	91.8	98.7
2019											
Jan	80.2	92.2	101.6	100.9	87.5	59.6	65.5	87.8	95.4	91.4	97.5
Percentage Change over same period of previous year (%)											
2016	-6.9	-3.4	-2.0	-0.4	-8.9	-18.2	5.1	-4.4	-6.0	-3.6	0.5
2017	7.0	1.0	1.9	-1.7	-0.9	29.4	2.4	5.7	3.8	-1.0	0.6
2018	6.4	-0.2	-1.0	1.1	1.2	25.5	-12.4	4.7	3.3	-2.1	-1.3
2018											
Jan	0.1	-3.1	-1.9	-0.1	0.7	8.9	-14.5	0.4	1.8	-5.3	-2.8
Feb	-1.1	-3.5	-1.8	0.2	1.0	5.5	-12.9	-2.2	1.9	-5.3	-2.9
Mar	0.5	-4.0	-2.9	-	1.4	13.9	-11.3	-1.6	2.1	-6.5	-2.7
Apr	2.6	-2.5	-2.5	1.1	2.0	17.5	-8.9	0.2	3.1	-4.5	-2.9
May	8.6	-0.6	-1.6	0.9	2.0	36.4	-10.1	7.1	4.4	-3.7	-1.8
Jun	11.7	0.6	-1.3	1.1	2.8	47.6	-9.7	9.8	5.2	-2.5	-1.9
Jul	13.5	2.9	0.1	1.8	1.6	46.5	-10.5	12.7	5.6	0.6	-0.5
Aug	12.8	3.0	0.5	1.3	1.1	42.5	-10.2	9.6	4.6	1.7	-0.2
Sep	12.1	2.1	-0.3	1.2	0.9	40.8	-13.0	7.7	3.9	0.9	-0.3
Oct	12.7	1.7	0.3	1.8	1.0	43.6	-14.4	7.4	2.9	0.3	0.1
Nov	5.1	0.9	-0.4	2.1	0.2	16.0	-18.2	5.0	2.3	-0.1	-0.1
Dec	-0.4	0.2	-0.3	2.0	0.2	-2.1	-15.3	1.7	2.2	-0.6	0.6
2019											
Jan	-1.9	-0.4	1.2	0.9	-0.7	-5.8	-11.7	-2.4	1.5	-0.2	-0.2

NOTATIONS

nes not elsewhere specified
- nil or negligible

NOTES

The Singapore Manufactured Products and Domestic Supply Price Indices report contains statistics that are the most recent available at the time of its preparation.

Some statistics, particularly those for the most recent time periods, are provisional and may be subject to revision in later issues.