



# Singapore Manufactured Products & Domestic Supply Price Indices January 2020

**SINGAPORE MANUFACTURED PRODUCTS &  
DOMESTIC SUPPLY PRICE INDICES, January 2020  
ISSN 2591-7447**

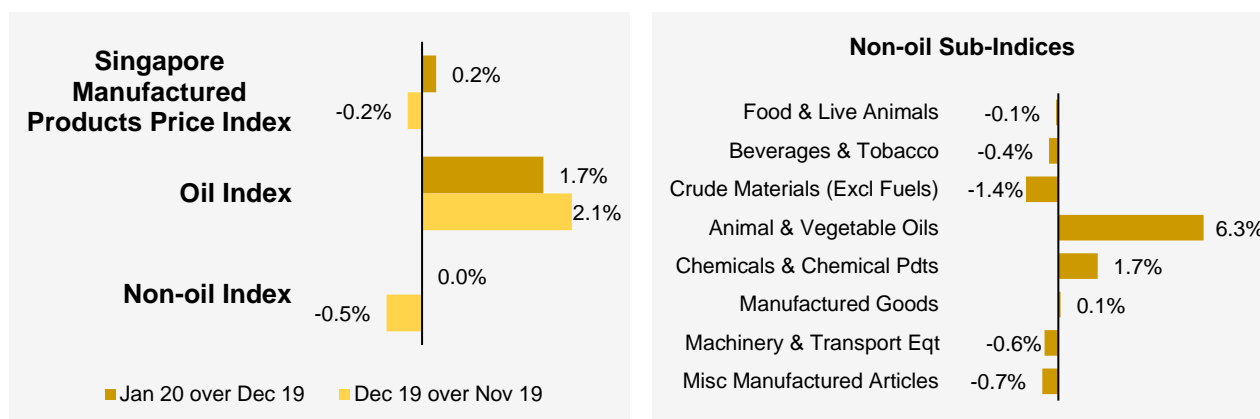
**© Department of Statistics, Ministry of Trade & Industry, Republic of Singapore**

Reproducing or quoting any part of this publication is permitted, provided this publication is accredited as the source. Please refer to the Statistics Singapore Website Terms of Use (<http://www.singstat.gov.sg/terms-of-use>) for more details on the conditions of use of this publication.

Statistical activities conducted by the Singapore Department of Statistics are governed by the provisions of the Statistics Act (Cap. 317). The Act guarantees the confidentiality of information collected from individuals and companies. It spells out the legislative authority and responsibility of the Chief Statistician. The Act is available in the Department's Website ([www.singstat.gov.sg](http://www.singstat.gov.sg)).

# Singapore Manufactured Products Price Index (2018 = 100) January 2020

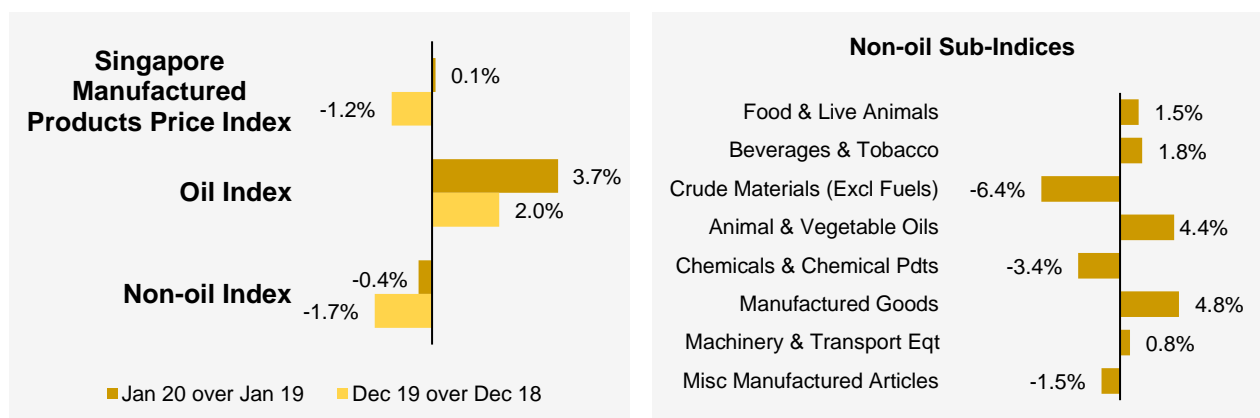
## Month-on-Month Change



The Singapore Manufactured Products Price Index increased 0.2% in January 2020, after decreasing 0.2% in December 2019. The Oil index rose 1.7%, after the 2.1% gain in the previous month. The Non-oil index was unchanged, following the 0.5% decline in December 2019.

For the Non-oil sub-indices, increases led by the Animal & Vegetable Oils (6.3%) and Chemicals & Chemical Products (1.7%) indices, due mainly to higher prices of palm oil and ethylene respectively, were partially moderated by decreases in the Miscellaneous Manufactured Articles (-0.7%) and Machinery & Transport Equipment (-0.6%) indices.

## Year-on-Year Change

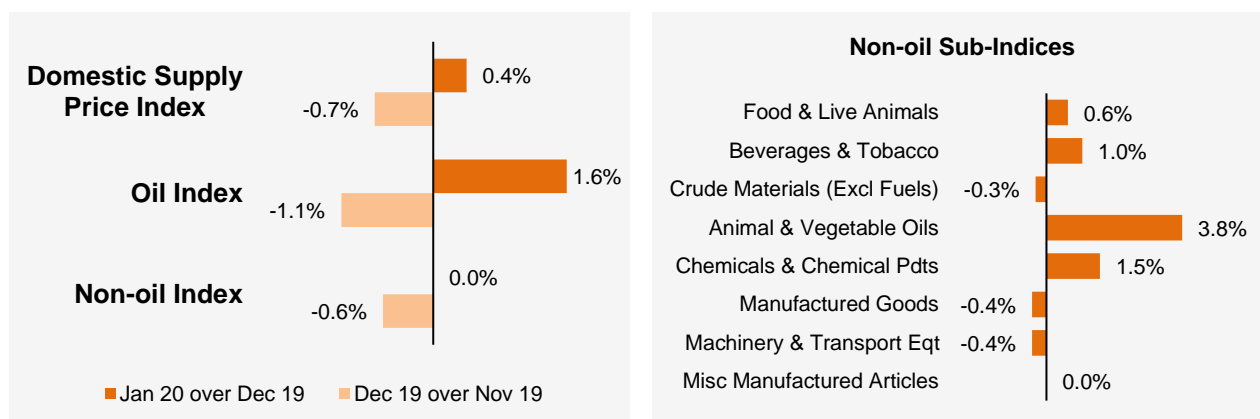


The Singapore Manufactured Products Price Index rose 0.1% in January 2020 from a year ago, in contrast to the 1.2% decrease in December 2019. The Oil index increased 3.7% while the Non-oil index fell 0.4%.

For the Non-oil sub-indices, lower prices of Crude Materials (-6.4%), Chemicals & Chemical Products (-3.4%) and Miscellaneous Manufactured Articles (-1.5%) were partially offset by higher prices of Manufactured Good (4.8%), Animal & Vegetable Oils (4.4%), Beverages & Tobacco (1.8%), Food & Live Animals (1.5%) and Machinery & Transport Equipment (0.8%).

## Domestic Supply Price Index (2018 = 100) January 2020

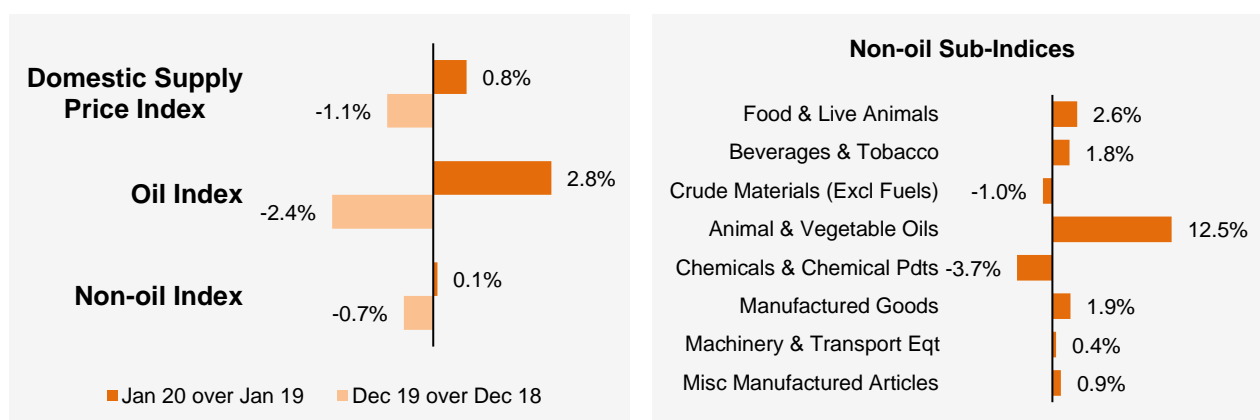
### Month-on-Month Change



The Domestic Supply Price Index increased 0.4% in January 2020, in contrast to the 0.7% decrease in December 2019. The Oil index rose 1.6%, against the 1.1% decrease in the previous month. The Non-oil index was unchanged, following the 0.6% decline in December 2019.

For the Non-oil sub-indices, increases led by the Animal & Vegetable Oils (3.8%) and Chemicals & Chemical Products (1.5%) indices, due mainly to higher prices of palm oil and ethylene respectively, were partially moderated by decreases in the Machinery & Transport Equipment (-0.4%) and Manufactured Goods (-0.4%) indices.

### Year-on-Year Change



The Domestic Supply Price Index rose 0.8% in January 2020 from a year ago, against the 1.1% decrease in December 2019. The Oil and Non-Oil indices rose 2.8% and 0.1% respectively.

For the Non-oil sub-indices, higher prices of Animal & Vegetable Oils (12.5%), Food & Live Animals (2.6%), Manufactured Goods (1.9%), Beverages & Tobacco (1.8%), Miscellaneous Manufactured Articles (0.9%) and Machinery & Transport Equipment (0.4%) were partially offset by lower prices of Chemicals & Chemical Products (-3.7%) and Crude Materials (-1.0%).

## Technical Note

The **Singapore Manufactured Products Price Index (SMPPI)** monitors price changes of locally manufactured commodities. The weights of the index are derived from the distribution of local production by commodity in 2018. Ex-factory prices are obtained from principal manufacturers of the items concerned.

The **Domestic Supply Price Index (DSPI)** is designed to measure the changes in the price level of goods manufactured locally or imported which are retained for use in the domestic economy by the government, business or household sectors. For imported products, the prices refer to those paid by importers in bringing the goods into Singapore, commonly referred to as c.i.f. prices. In the case of Singapore manufactured products, the quotations used are ex-factory prices. The weight for each commodity item is proportional to the value of its total supply or availability in the domestic market in 2018.

### Index Formula

The 2018-based series is compiled using the 'modified Laspeyres' formula where the weight reference period of 2017 preceded the price reference period of 2018. The geometric mean formula has been adopted in the computation of unweighted elementary aggregate price indices. The arithmetic mean formula is applied in compiling indices at higher levels of aggregation where weights of specific sub-indices are available.

### Measurement of Changes in Price Indices

*Change over previous month* compares the index of the month with that of the preceding month. Such comparisons measure the change in the price index between two consecutive months. They serve as useful short-term indicators of the price movements.

*Change over same period of previous year* measures change in the index over a twelve-month period. Such comparisons compare the movement in the price index between similar months in two consecutive years.

### Linking the Old 2012-Based Price Index Series to the New 2018-Based Price Index Series

The SMPPI and DSPI have been rebased from base year 2012 to base year 2018. To facilitate comparison of the historical price indices across base years, the old 2012-based series are linked to the new 2018-based series by re-scaling them via a Linked Coefficient. The Linked Coefficient is the ratio of the annual 2018-based index in 2018 to the annual 2012-based index in 2018.

Example : Linking the old Iron & Steel Index series for SMPPI prior to 2018, to the 2018-based Iron & Steel Index (2018=100)

1) Calculate the linked coefficient

Year	Iron & Steel Index (2012=100)	Iron & Steel Index (2018=100)	Linked Coefficient
2018	78.0	100.0	$100.0 \div 78.0 = 1.282$

2) Re-scaling the old series to the 2018-based series using the Linked Coefficient

Year	Month	Iron & Steel Index (2012=100)	Iron & Steel Index (2018=100)
2016	Dec	70.8	$70.8 \times 1.282 = 90.8$
2017	Jan	71.4	$71.4 \times 1.282 = 91.5$

### Linking Method for Maintaining the Old Index Reference Period

To continue the old 2012-based index series going forward in time, re-scale the new 2018-based index series to the old base year 2012 level, via a Linked Coefficient. The Linked Coefficient is the ratio of the annual 2012-based index in 2018 to the annual 2018-based index in 2018.

Example : Linking the new 2018-based Iron & Steel Index series for SMPPI to the 2012-based Iron & Steel Index (2012=100)

1) Calculate the linked coefficient

Year	Iron & Steel Index (2018=100)	Iron & Steel Index (2012=100)	Linked Coefficient
2018	100.0	78.0	$78.0 \div 100.0 = 0.780$

2) Re-scaling the new series to the 2012-based series using the Linked Coefficient

Year	Month	Iron & Steel Index (2018=100)	Iron & Steel Index (2012=100)
2019	Jan	105.6	$105.6 \times 0.780 = 82.4$
2019	Feb	104.7	$104.7 \times 0.780 = 81.7$

### Index Revision

The indices may be revised when late returns and amendments received from respondents are incorporated.

### Dissemination of Data

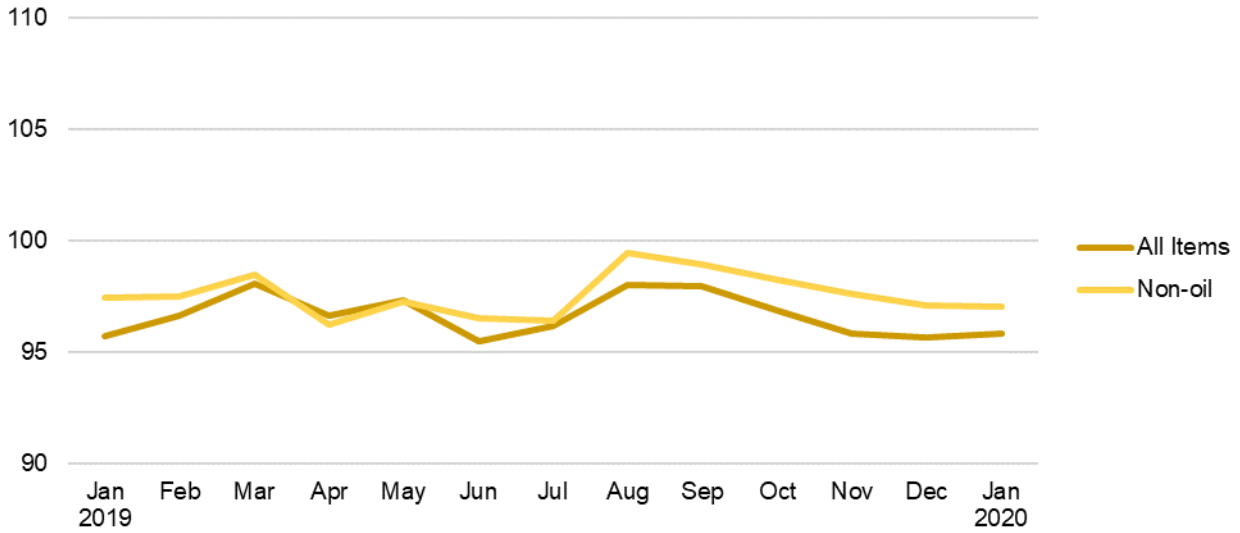
The Singapore Manufactured Products and Domestic Supply Price Indices are available on the SingStat Website ([www.singstat.gov.sg/tablebuilder](http://www.singstat.gov.sg/tablebuilder)). Excel tables for this month's report are available at <https://www.singstat.gov.sg/publications/economy/producer-price-indices> or through the QR code below:



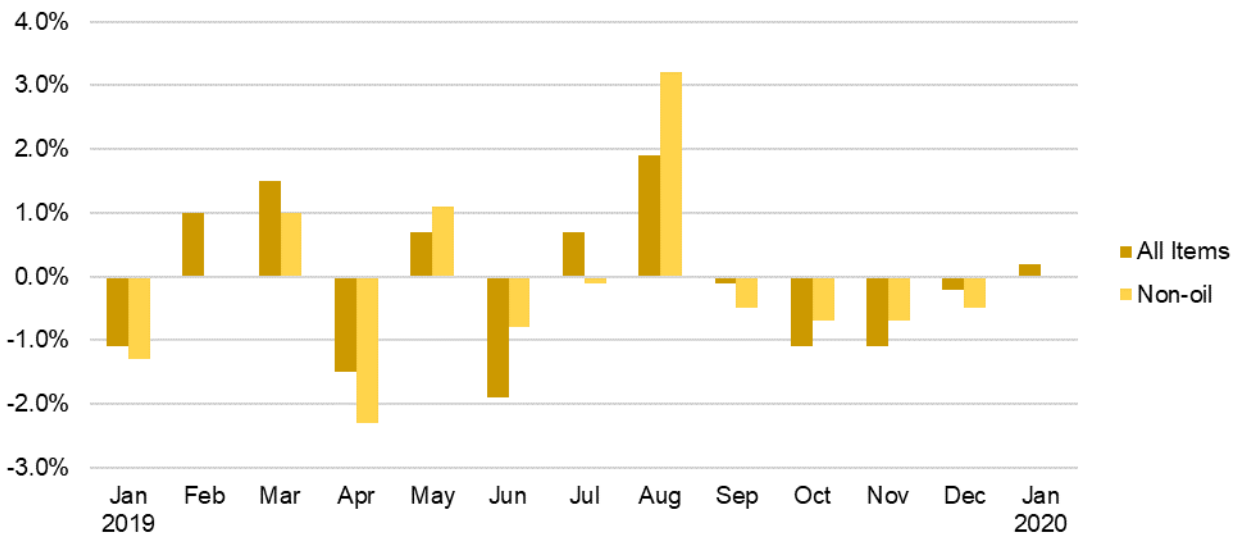


# Singapore Manufactured Products Price Index (2018 = 100) January 2020

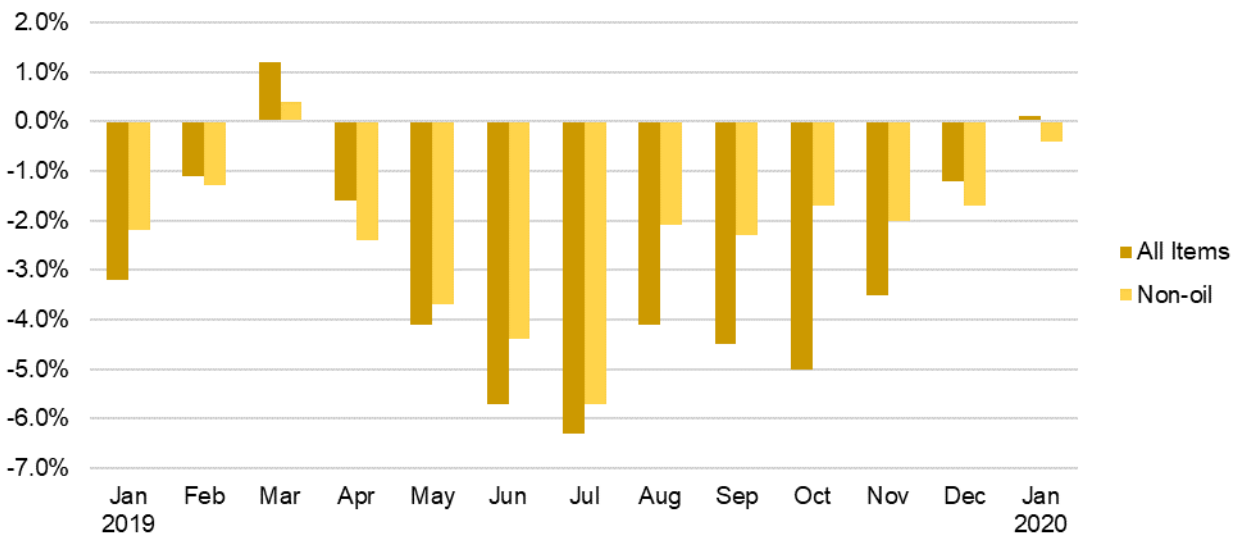
**Chart 1: Index**



**Chart 2: Month-on-Month Change**

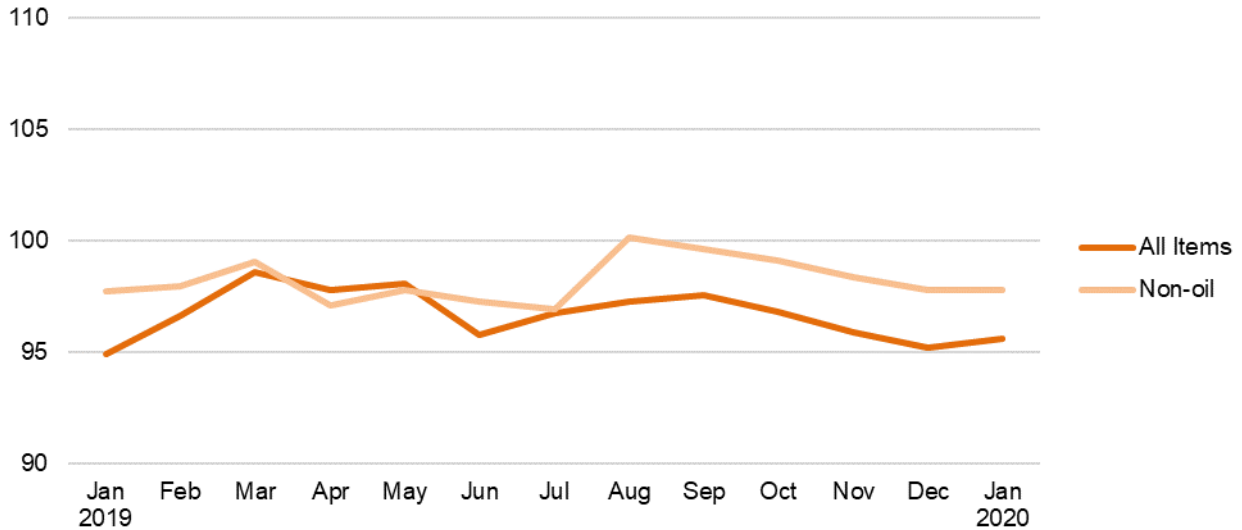


**Chart 3: Year-on-Year Change**

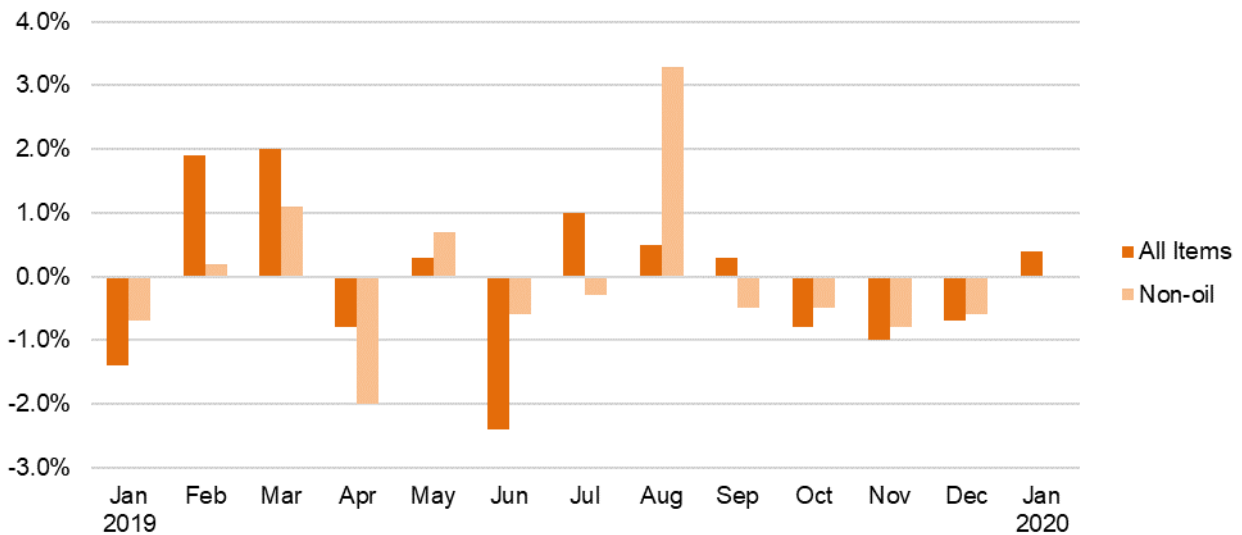


## Domestic Supply Price Index (2018 = 100) January 2020

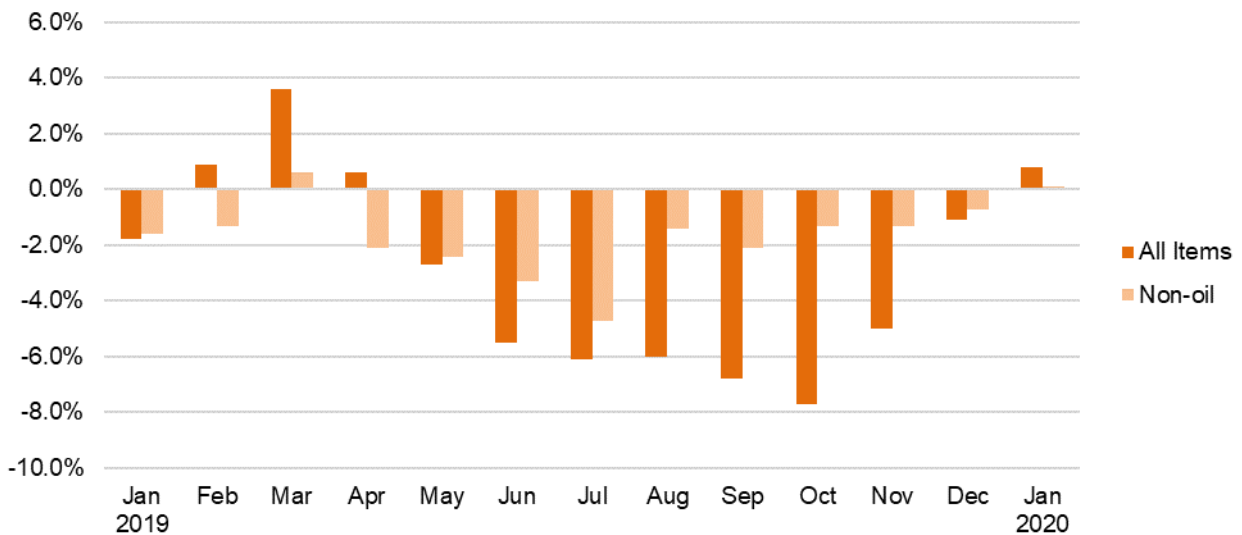
**Chart 4: Index**



**Chart 5: Month-on-Month Change**



**Chart 6: Year-on-Year Change**





**Table 1 Singapore Manufactured Products Price Index**

**January 2020**

Commodity section / division	Weights	Index (2018=100)			% Change		
		Nov 2019	Dec 2019	Jan 2020	Dec 2019	Jan 2020	Jan 2020
					Nov 2019	Dec 2019	Jan 2019
<b>All Items</b>	<b>10,000</b>	<b>95.8</b>	<b>95.6</b>	<b>95.8</b>	<b>-0.2</b>	<b>0.2</b>	<b>0.1</b>
<b>Non-oil Items</b>	<b>8,586</b>	<b>97.6</b>	<b>97.1</b>	<b>97.0</b>	<b>-0.5</b>	<b>-</b>	<b>-0.4</b>
Food & Live Animals	256	100.9	101.2	101.1	0.2	-0.1	1.5
Meat & meat preparations	20	106.0	105.8	106.0	-0.1	0.1	3.6
Dairy products & birds' eggs	15	104.8	104.5	104.3	-0.3	-0.2	4.8
Fish seafood & preparations	5	94.6	94.5	94.5	-	-	-6.3
Cereals & cereal preparations	42	103.4	103.4	103.4	-	-	3.0
Vegetables & fruit	3	99.2	99.2	99.2	-	-	-1.4
Coffee, tea, cocoa, spices & manufactures	28	93.5	93.7	93.4	0.3	-0.3	-3.8
Animal feeding stuff (excl unmilled cereals)	6	93.6	93.5	93.2	-0.1	-0.3	-9.1
Miscellaneous food preparations	135	101.2	101.6	101.5	0.4	-0.1	2.4
Beverages & Tobacco	31	104.0	104.0	103.6	-	-0.4	1.8
Beverages	31	104.0	104.0	103.6	-	-0.4	1.8
Crude Materials (excl fuels)	56	93.9	93.3	92.0	-0.7	-1.4	-6.4
Crude rubber	50	93.1	92.3	90.8	-0.8	-1.7	-7.3
Cork & wood	1	100.9	100.9	100.9	-	-	0.5
Crude fertilizers & minerals	2	108.9	108.9	108.9	-	-	-
Metalliferous ores & metal scrap	4	97.5	98.0	98.8	0.5	0.8	1.3
Mineral Fuels, Lubricants & Related Materials	1,414	85.0	86.8	88.3	2.1	1.7	3.7
Petroleum & products & related materials	1,386	85.1	86.9	88.0	2.1	1.2	3.2
Gas	28	82.2	83.3	106.5	1.3	27.8	34.9
Animal & Vegetable Oils, Fats & Waxes	14	87.3	88.4	94.0	1.3	6.3	4.4
Fixed vegetable fats & oils	14	87.3	88.4	94.0	1.3	6.3	4.4
Chemicals & Chemical Products	2,165	93.8	92.4	94.0	-1.5	1.7	-3.4
Organic chemicals	1,012	91.1	88.4	91.8	-3.0	3.9	-4.4
Inorganic chemicals	40	99.9	99.0	97.9	-0.9	-1.1	1.9
Dyeing, tanning & colouring materials	22	100.2	100.1	100.1	-	-	-1.6
Medicinal & pharmaceutical products	232	95.3	95.6	96.5	0.4	1.0	-1.1
Essential oils & perfume; toilet cleaning products	133	98.3	98.2	98.6	-0.1	0.4	-5.7
Plastics in primary forms	372	90.7	90.4	90.1	-0.3	-0.4	-5.4
Plastics in non-primary forms	34	99.4	99.0	98.8	-0.4	-0.1	-0.9
Chemical materials & products nes	320	101.3	100.8	100.6	-0.5	-0.2	-
Manufactured Goods	284	105.0	105.8	105.9	0.8	0.1	4.8
Rubber manufactures nes	23	99.7	99.1	99.2	-0.6	0.1	-0.9
Wood & cork manufactures (excl furniture)	8	99.7	99.7	99.7	-	-	0.3
Paper manufactures	34	101.4	101.4	101.4	-	-	-0.4
Non-metal mineral manufactures nes	45	106.8	106.8	106.8	-	-	5.9
Iron & steel	53	106.8	105.8	105.9	-0.9	0.1	0.3
Non-ferrous metals	20	96.9	97.0	96.9	0.1	-	-1.4
Manufactures of metals nes	99	107.8	110.9	111.0	2.9	0.1	11.5
Machinery & Transport Equipment	4,897	98.3	98.0	97.4	-0.3	-0.6	0.8
Power-generating machinery & equipment	8	89.9	89.4	85.1	-0.5	-4.9	-9.6
Machinery specialized for particular industries	571	99.0	98.9	98.7	-0.1	-0.2	-0.6
Metal working machinery	18	107.3	107.0	106.4	-0.2	-0.5	6.6
General industrial machinery	85	103.5	103.5	103.0	-	-0.5	4.2
Office machines & data-processing machines	880	103.8	103.2	102.5	-0.5	-0.7	2.4
Telecommunication apparatus	45	92.1	92.5	92.4	0.4	-0.1	-1.5
Electrical machinery apparatus nes, electrical parts	3,271	96.6	96.3	95.6	-0.3	-0.7	0.5
Road vehicles	20	103.0	103.0	102.7	0.1	-0.3	1.3
Miscellaneous Manufactured Articles	883	99.6	99.3	98.6	-0.3	-0.7	-1.5
Furniture, bedding, mattresses, cushions & others	16	100.1	100.1	100.1	-	-	-
Travel goods, handbags & similar containers	1	103.1	103.3	100.3	0.2	-2.9	-3.4
Professional scientific & controlling instruments	516	99.5	99.2	98.3	-0.3	-0.9	-2.5
Photographic & optical goods nes; watches & clocks	48	98.7	98.6	98.2	-0.1	-0.4	-0.7
Miscellaneous manufactured articles nes	303	99.9	99.6	99.1	-0.4	-0.5	0.1

Figures may not sum to total due to rounding.

**Table 2 Domestic Supply Price Index**

**January 2020**

Commodity section / division	Weights	Index (2018=100)			% Change		
		Nov 2019	Dec 2019	Jan 2020	Dec 2019	Jan 2020	Jan 2020
					Nov 2019	Dec 2019	Jan 2019
<b>All Items</b>	<b>10,000</b>	<b>95.9</b>	<b>95.2</b>	<b>95.6</b>	<b>-0.7</b>	<b>0.4</b>	<b>0.8</b>
<b>Non-oil Items</b>	<b>7,212</b>	<b>98.3</b>	<b>97.8</b>	<b>97.8</b>	<b>-0.6</b>	<b>-</b>	<b>0.1</b>
Food & Live Animals	319	102.4	102.7	103.3	0.3	0.6	2.6
Live animals	10	97.5	97.6	98.6	0.1	1.0	-1.2
Meat & meat preparations	56	105.1	106.2	106.9	1.0	0.7	7.9
Dairy products & birds' eggs	43	105.9	104.1	104.5	-1.7	0.4	1.3
Fish seafood & preparations	42	96.9	97.7	98.6	0.9	1.0	-2.5
Cereals & cereal preparations	51	102.7	102.3	102.0	-0.4	-0.2	1.2
Vegetables & fruit	40	103.9	106.7	108.4	2.8	1.6	5.7
Sugar, sugar preparations & honey	13	97.6	96.5	97.8	-1.1	1.3	-1.4
Coffee, tea, cocoa, spices & manufactures	27	100.4	100.6	100.7	0.2	0.1	1.7
Animal feeding stuff (excl unmilled cereals)	3	98.3	98.9	99.4	0.7	0.5	-1.1
Miscellaneous food preparations	35	102.9	103.1	103.5	0.1	0.4	3.5
Beverages & Tobacco	30	102.3	102.2	103.1	-0.1	1.0	1.8
Beverages	28	102.3	102.2	103.3	-0.1	1.1	2.0
Tobacco & manufactures	2	102.1	101.8	101.1	-0.3	-0.7	-0.6
Crude Materials (excl fuels)	85	98.5	98.5	98.2	-	-0.3	-1.0
Oil seeds & oleaginous fruits	3	109.7	109.6	109.4	-0.1	-0.2	12.6
Crude rubber	31	93.2	92.6	91.1	-0.7	-1.5	-7.5
Cork & w ood	3	95.8	95.8	95.8	-	-	-7.7
Crude fertilizers & minerals	34	103.6	103.5	104.0	-	0.5	2.7
Metalliferous ores & metal scrap	5	88.5	90.1	93.6	1.8	3.9	-0.8
Crude animal & vegetable materials nes	10	100.4	101.9	100.4	1.5	-1.4	4.9
Mineral Fuels, Lubricants & Related Materials	2,788	89.5	88.5	90.0	-1.1	1.6	2.8
Petroleum & products & related materials	2,669	89.7	89.2	90.7	-0.6	1.7	3.9
Gas	119	83.1	72.3	73.4	-13.0	1.5	-20.7
Animal & Vegetable Oils, Fats & Waxes	42	94.1	99.0	102.8	5.3	3.8	12.5
Fixed vegetable fats & oils	42	94.1	99.0	102.8	5.3	3.8	12.5
Chemicals & Chemical Products	1,142	92.5	90.4	91.7	-2.3	1.5	-3.7
Organic chemicals	459	83.2	79.1	82.7	-4.9	4.6	-6.5
Inorganic chemicals	54	96.9	93.5	94.2	-3.6	0.8	-2.5
Dyeing, tanning & colouring materials	20	107.4	107.3	106.9	-0.1	-0.3	4.4
Medicinal & pharmaceutical products	95	100.6	100.7	99.1	0.1	-1.6	-2.3
Essential oils & perfume; toilet cleaning products	62	99.2	99.0	99.0	-0.3	-	-7.8
Plastics in primary forms	158	93.1	92.5	92.3	-0.6	-0.2	-3.8
Plastics in non-primary forms	32	101.5	101.0	100.6	-0.5	-0.4	-0.6
Chemical materials & products nes	263	100.8	99.9	99.9	-0.9	-	-0.4
Manufactured Goods	490	102.4	102.3	101.9	-0.1	-0.4	1.9
Rubber manufactures nes	15	99.0	103.8	96.5	4.8	-7.0	-1.7
Wood & cork manufactures (excl furniture)	6	99.6	99.6	99.6	-	-	0.3
Paper manufactures	53	99.1	98.6	98.7	-0.5	-	-2.6
Textile manufactures	15	102.1	101.9	102.1	-0.2	0.2	1.6
Non-metal mineral manufactures nes	123	105.4	105.1	104.8	-0.2	-0.4	4.3
Iron & steel	110	102.2	101.2	100.9	-1.0	-0.3	1.0
Non-ferrous metals	80	101.5	101.6	101.8	0.1	0.2	3.0
Manufactures of metals nes	86	102.0	102.7	102.2	0.7	-0.5	2.0
Machinery & Transport Equipment	4,302	98.6	98.2	97.8	-0.4	-0.4	0.4
Pow er-generating machinery & equipment	205	106.7	106.4	108.2	-0.3	1.7	3.0
Machinery specialized for particular industries	189	99.8	99.6	99.3	-0.2	-0.3	-0.5
Metal w orking machinery	6	101.4	101.4	101.3	-	-	1.3
General industrial machinery	90	100.0	99.8	98.4	-0.2	-1.4	-1.2
Office machines & data-processing machines	192	99.7	99.7	98.7	-	-1.1	-2.6
Telecommunication apparatus	53	90.1	87.2	86.8	-3.2	-0.4	-10.0
Electrical machinery apparatus nes, electrical parts	3,456	97.9	97.5	97.1	-0.4	-0.5	0.7
Road vehicles	111	102.1	102.1	102.0	-0.1	-	-0.8
Miscellaneous Manufactured Articles	802	101.3	101.0	101.0	-0.2	-	0.9
Prefab building, sanitary plumbing, lighting nes	7	98.3	98.3	99.2	-	0.9	-7.3
Furniture, bedding, mattresses, cushions & others	23	104.0	104.0	104.0	-	0.1	4.0
Travel goods, handbags & similar containers	39	103.1	103.1	101.7	-	-1.3	-1.9
Articles of apparel & clothing accessories	25	99.4	99.6	99.6	0.2	-	-1.3
Footw ear	14	99.4	99.3	99.2	-0.1	-0.1	-1.3
Professional scientific & controlling instruments	409	100.8	100.6	100.0	-0.2	-0.6	-0.4
Photographic & optical goods nes; w atches & clocks	75	100.5	99.9	101.0	-0.6	1.1	0.6
Miscellaneous manufactured articles nes	211	102.2	102.0	102.9	-0.2	1.0	4.5

Figures may not sum to total due to rounding.

**Table 3 Singapore Manufactured Products Price Index**

Section	All Items	Non-oil Items	Food & Live Animals	Beverages & Tobacco	Crude Materials	Mineral Fuels	Animal & Vegetable Oils, Fats & Waxes	Chemicals & Chemical Products	Manufactured Goods	Machinery & Transport Equipment	Misc. Manufactured Articles
Weights	<b>10,000</b>	<b>8,586</b>	256	31	56	1,414	14	2,165	284	4,897	883
<b>Index (2018=100)</b>											
2016	<b>92.2</b>	<b>97.9</b>	99.7	103.0	94.8	66.4	113.6	88.0	96.2	105.2	95.4
2017	<b>95.8</b>	<b>98.6</b>	99.5	98.4	94.7	83.0	119.3	92.5	97.8	103.0	97.2
2018	<b>100.0</b>	<b>100.0</b>	100.0	100.0	100.0	100.0	100.0	100.0	100.0	100.0	100.0
2019	<b>96.7</b>	<b>97.6</b>	99.8	103.5	94.5	91.3	88.5	95.3	102.2	97.8	100.2
2019											
Jan	<b>95.7</b>	<b>97.4</b>	99.6	101.8	98.3	85.1	90.0	97.4	101.1	96.6	100.1
Feb	<b>96.6</b>	<b>97.4</b>	99.5	101.8	96.9	91.7	89.6	97.2	100.9	96.8	99.8
Mar	<b>98.1</b>	<b>98.5</b>	99.7	101.8	96.3	95.6	89.1	96.5	101.3	98.9	99.9
Apr	<b>96.6</b>	<b>96.2</b>	99.1	104.3	93.2	99.0	89.5	95.9	100.1	95.4	99.8
May	<b>97.3</b>	<b>97.2</b>	99.5	104.1	94.0	97.8	89.3	96.3	100.4	96.7	101.0
Jun	<b>95.5</b>	<b>96.5</b>	99.2	104.0	93.0	89.2	88.7	94.5	100.7	96.3	100.5
Jul	<b>96.1</b>	<b>96.4</b>	99.2	104.0	92.8	94.8	88.3	93.9	101.6	96.4	100.0
Aug	<b>98.0</b>	<b>99.4</b>	99.5	104.0	94.3	89.4	88.3	95.6	102.0	100.7	101.3
Sep	<b>98.0</b>	<b>98.9</b>	100.1	104.0	94.2	92.3	86.5	95.2	103.1	99.8	101.1
Oct	<b>96.9</b>	<b>98.2</b>	100.7	104.0	94.4	88.4	87.2	94.3	103.9	99.2	100.3
Nov	<b>95.8</b>	<b>97.6</b>	100.9	104.0	93.9	85.0	87.3	93.8	105.0	98.3	99.6
Dec	<b>95.6</b>	<b>97.1</b>	101.2	104.0	93.3	86.8	88.4	92.4	105.8	98.0	99.3
2020											
Jan	<b>95.8</b>	<b>97.0</b>	101.1	103.6	92.0	88.3	94.0	94.0	105.9	97.4	98.6
<b>Percentage Change over same period of previous year (%)</b>											
2017	<b>3.8</b>	<b>0.7</b>	-0.2	-4.4	-0.1	25.0	5.0	5.1	1.6	-2.2	1.9
2018	<b>4.4</b>	<b>1.4</b>	0.5	1.6	5.6	20.5	-16.2	8.1	2.3	-2.9	2.9
2019	<b>-3.3</b>	<b>-2.4</b>	-0.2	3.5	-5.5	-8.7	-11.5	-4.7	2.2	-2.2	0.2
2019											
Jan	<b>-3.2</b>	<b>-2.2</b>	0.1	1.8	8.8	-9.6	-15.7	-1.5	2.8	-3.5	0.5
Feb	<b>-1.1</b>	<b>-1.3</b>	-0.2	1.8	8.1	0.4	-12.9	0.4	2.2	-2.7	0.4
Mar	<b>1.2</b>	<b>0.4</b>	0.2	1.9	4.7	5.8	-13.5	0.1	2.6	0.4	0.7
Apr	<b>-1.6</b>	<b>-2.4</b>	-0.7	4.2	-4.5	3.4	-16.0	-1.1	1.4	-4.0	1.6
May	<b>-4.1</b>	<b>-3.7</b>	-0.9	4.1	-6.8	-6.9	-13.5	-4.5	0.8	-4.6	1.8
Jun	<b>-5.7</b>	<b>-4.4</b>	-1.4	4.0	-9.7	-13.8	-13.3	-6.2	0.9	-4.9	0.7
Jul	<b>-6.3</b>	<b>-5.7</b>	-0.6	4.0	-11.0	-9.9	-12.1	-9.0	1.0	-5.8	-0.4
Aug	<b>-4.1</b>	<b>-2.1</b>	-0.6	4.1	-11.8	-15.8	-10.8	-6.7	1.3	-0.7	0.8
Sep	<b>-4.5</b>	<b>-2.3</b>	-	4.1	-11.7	-16.8	-10.6	-6.2	2.1	-1.3	0.3
Oct	<b>-5.0</b>	<b>-1.7</b>	0.3	4.1	-10.0	-22.8	-8.6	-6.9	2.8	0.2	-0.7
Nov	<b>-3.5</b>	<b>-2.0</b>	1.0	4.0	-8.3	-13.3	-5.4	-7.0	3.7	-0.2	-1.3
Dec	<b>-1.2</b>	<b>-1.7</b>	0.9	4.0	-8.0	2.0	-3.2	-7.5	4.1	0.5	-1.5
2020											
Jan	<b>0.1</b>	<b>-0.4</b>	1.5	1.8	-6.4	3.7	4.4	-3.4	4.8	0.8	-1.5

**Table 4 Domestic Supply Price Index**

Section	All Items	Non-oil Items	Food & Live Animals	Beverages & Tobacco	Crude Materials	Mineral Fuels	Animal & Vegetable Oils, Fats & Waxes	Chemicals & Chemical Products	Manufactured Goods	Machinery & Transport Equipment	Misc. Manufactured Articles
Weights	<b>10,000</b>	<b>7,212</b>	319	30	85	2,788	42	1,142	490	4,302	802
<b>Index (2018=100)</b>											
2016	<b>87.8</b>	<b>99.2</b>	99.2	100.6	99.7	61.6	111.5	90.4	93.2	103.2	100.7
2017	<b>94.0</b>	<b>100.2</b>	101.0	98.9	98.8	79.7	114.1	95.5	96.8	102.2	101.3
2018	<b>100.0</b>	<b>100.0</b>	100.0	100.0	100.0	100.0	100.0	100.0	100.0	100.0	100.0
2019	<b>96.7</b>	<b>98.2</b>	101.3	102.1	98.4	93.0	90.9	94.1	101.5	98.2	101.0
2019											
Jan	<b>94.9</b>	<b>97.7</b>	100.7	101.3	99.2	87.5	91.4	95.3	100.0	97.5	100.2
Feb	<b>96.6</b>	<b>97.9</b>	99.9	101.2	98.6	93.3	91.1	95.8	100.9	97.7	99.9
Mar	<b>98.6</b>	<b>99.0</b>	99.8	101.3	98.4	97.4	89.9	95.6	101.6	99.5	99.9
Apr	<b>97.7</b>	<b>97.1</b>	100.0	101.9	97.6	99.5	90.7	95.4	101.1	96.3	100.1
May	<b>98.1</b>	<b>97.8</b>	100.6	102.1	98.2	98.8	89.8	95.4	101.6	97.2	101.0
Jun	<b>95.7</b>	<b>97.2</b>	101.1	101.9	97.7	91.9	88.4	93.7	101.2	96.8	101.1
Jul	<b>96.7</b>	<b>96.9</b>	101.5	102.3	97.4	96.2	87.1	93.0	101.0	96.5	101.0
Aug	<b>97.2</b>	<b>100.1</b>	101.9	102.9	99.1	89.7	89.4	94.4	101.5	101.0	102.5
Sep	<b>97.6</b>	<b>99.6</b>	102.3	102.8	98.6	92.3	89.6	94.5	102.1	100.0	102.5
Oct	<b>96.8</b>	<b>99.1</b>	102.8	102.5	98.5	90.9	90.0	93.6	102.2	99.4	102.0
Nov	<b>95.9</b>	<b>98.3</b>	102.4	102.3	98.5	89.5	94.1	92.5	102.4	98.6	101.3
Dec	<b>95.2</b>	<b>97.8</b>	102.7	102.2	98.5	88.5	99.0	90.4	102.3	98.2	101.0
2020											
Jan	<b>95.6</b>	<b>97.8</b>	103.3	103.1	98.2	90.0	102.8	91.7	101.9	97.8	101.0
<b>Percentage Change over same period of previous year (%)</b>											
2017	<b>7.0</b>	<b>1.0</b>	1.9	-1.7	-0.9	29.4	2.4	5.7	3.8	-1.0	0.6
2018	<b>6.4</b>	<b>-0.2</b>	-1.0	1.1	1.2	25.5	-12.4	4.7	3.3	-2.1	-1.3
2019	<b>-3.3</b>	<b>-1.8</b>	1.3	2.1	-1.6	-7.0	-9.1	-5.9	1.5	-1.8	1.0
2019											
Jan	<b>-1.8</b>	<b>-1.6</b>	0.3	1.6	4.1	-2.4	-14.6	-3.2	1.4	-2.1	1.0
Feb	<b>0.9</b>	<b>-1.3</b>	-0.5	1.5	3.4	7.1	-14.8	-3.4	1.8	-1.5	0.8
Mar	<b>3.6</b>	<b>0.6</b>	0.4	1.4	2.2	12.3	-14.9	-3.0	2.6	1.5	0.8
Apr	<b>0.6</b>	<b>-2.1</b>	1.4	2.2	-0.5	8.1	-13.0	-3.4	2.0	-3.0	1.3
May	<b>-2.7</b>	<b>-2.4</b>	1.0	2.0	-1.8	-3.3	-13.3	-3.8	1.6	-3.4	1.3
Jun	<b>-5.5</b>	<b>-3.3</b>	1.5	1.8	-3.5	-11.1	-12.9	-7.2	0.9	-3.8	0.9
Jul	<b>-6.1</b>	<b>-4.7</b>	1.7	2.3	-4.7	-9.5	-13.1	-8.7	0.3	-5.5	0.4
Aug	<b>-6.0</b>	<b>-1.4</b>	1.7	2.9	-4.1	-17.3	-9.0	-8.0	0.8	-0.6	1.9
Sep	<b>-6.8</b>	<b>-2.1</b>	1.7	2.6	-4.6	-17.9	-7.3	-7.7	1.6	-1.9	1.7
Oct	<b>-7.7</b>	<b>-1.3</b>	2.1	2.4	-4.0	-22.1	-5.0	-8.2	1.6	-0.4	1.1
Nov	<b>-5.0</b>	<b>-1.3</b>	2.2	2.1	-3.2	-14.3	3.6	-7.0	2.0	-0.7	0.6
Dec	<b>-1.1</b>	<b>-0.7</b>	2.3	2.0	-2.1	-2.4	9.5	-6.2	1.4	-	0.6
2020											
Jan	<b>0.8</b>	<b>0.1</b>	2.6	1.8	-1.0	2.8	12.5	-3.7	1.9	0.4	0.9

**NOTATIONS**

- nes not elsewhere specified
- nil or negligible

**NOTES**

The Singapore Manufactured Products and Domestic Supply Price Indices report contains statistics that are the most recent available at the time of its preparation.

Some statistics, particularly those for the most recent time periods, are provisional and may be subject to revision in later issues.