



Singapore Manufactured Products & Domestic Supply Price Indices

January 2023

www.singstat.gov.sg

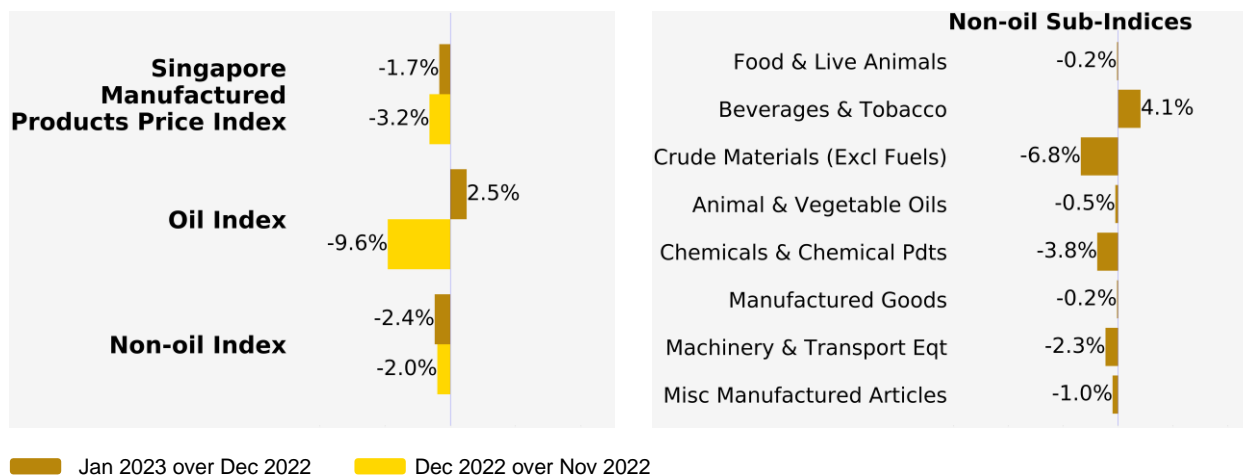
**SINGAPORE MANUFACTURED PRODUCTS &
DOMESTIC SUPPLY PRICE INDICES, January 2023
ISSN 2591-7447**

© Department of Statistics, Ministry of Trade & Industry, Republic of Singapore

Reproducing or quoting any part of this publication is permitted, provided this publication is accredited as the source. Please refer to the SingStat Website Terms of Use (<http://www.singstat.gov.sg/terms-of-use>) for more details on the conditions of use of this publication.

Singapore Manufactured Products Price Index (2018 = 100) January 2023

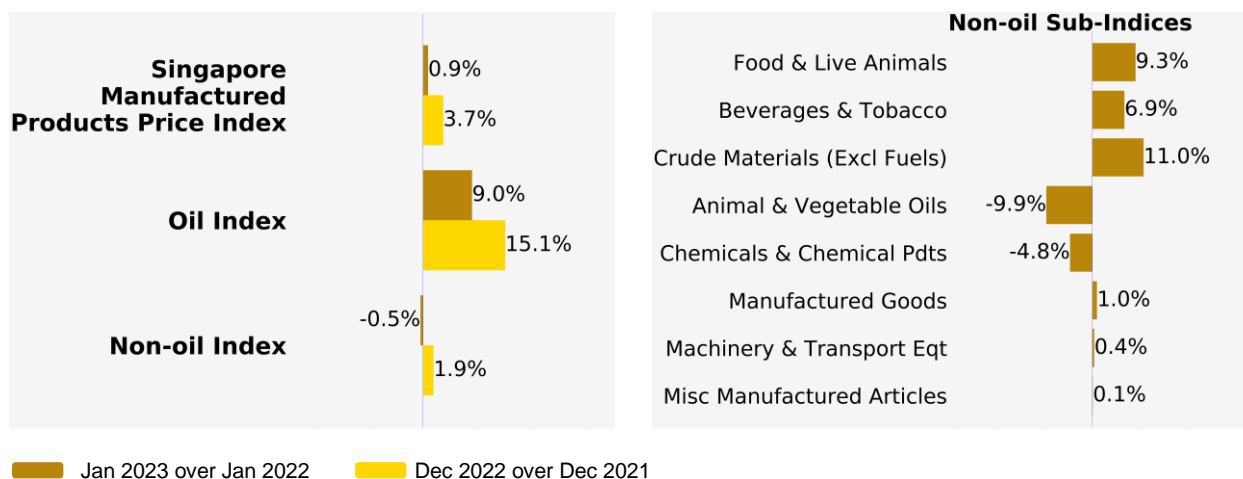
Month-on-Month Change



The Singapore Manufactured Products Price Index fell 1.7% in January 2023, extending the 3.2% decrease in December 2022. The Oil index gained 2.5%, reversing the 9.6% drop in the previous month. The Non-oil index contracted by 2.4% in January 2023, after the 2.0% decrease in December 2022.

Among the Non-oil sub-indices, the declines were led by the Chemicals & Chemical Products (-3.8%) and Machinery & Transport Equipment (-2.3%) indices, due mainly to lower prices of organic chemicals and electrical machinery apparatus respectively. The decreases were partially offset by the increase in the Beverages & Tobacco (4.1%) index, due mainly to higher prices of beverages.

Year-on-Year Change

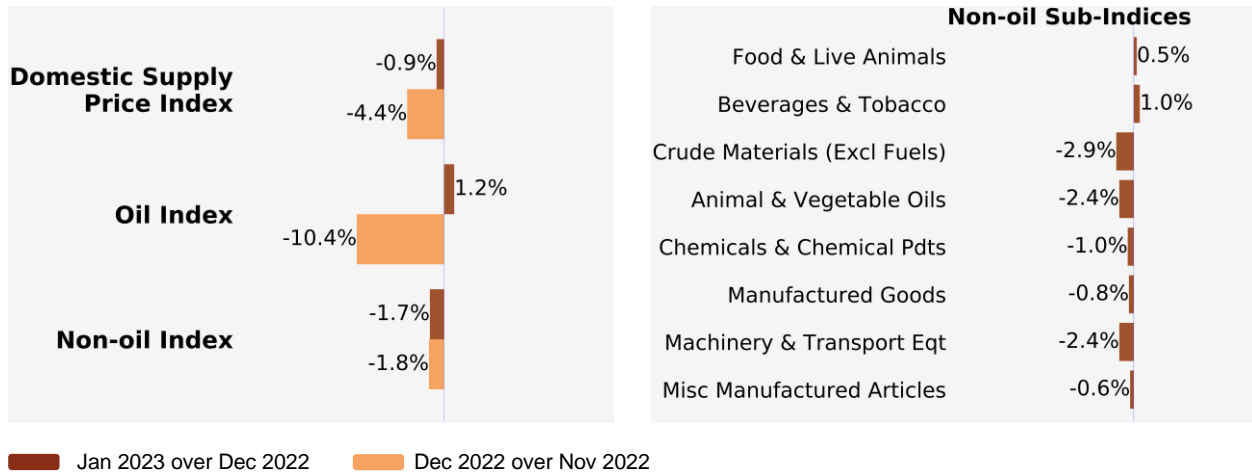


The Singapore Manufactured Products Price Index rose 0.9% in January 2023 from a year ago, following the 3.7% increase in December 2022. The Oil index rose 9.0% while the Non-oil index fell 0.5%.

For the Non-oil sub-indices, lower prices of Animal & Vegetable Oils (-9.9%) and Chemicals & Chemical Products (-4.8%) were partially offset by higher prices of Crude Materials (11.0%), Food & Live Animals (9.3%), Beverages & Tobacco (6.9%), Manufactured Goods (1.0%), Machinery & Transport Equipment (0.4%) and Miscellaneous Manufactured Articles (0.1%).

Domestic Supply Price Index (2018 = 100) January 2023

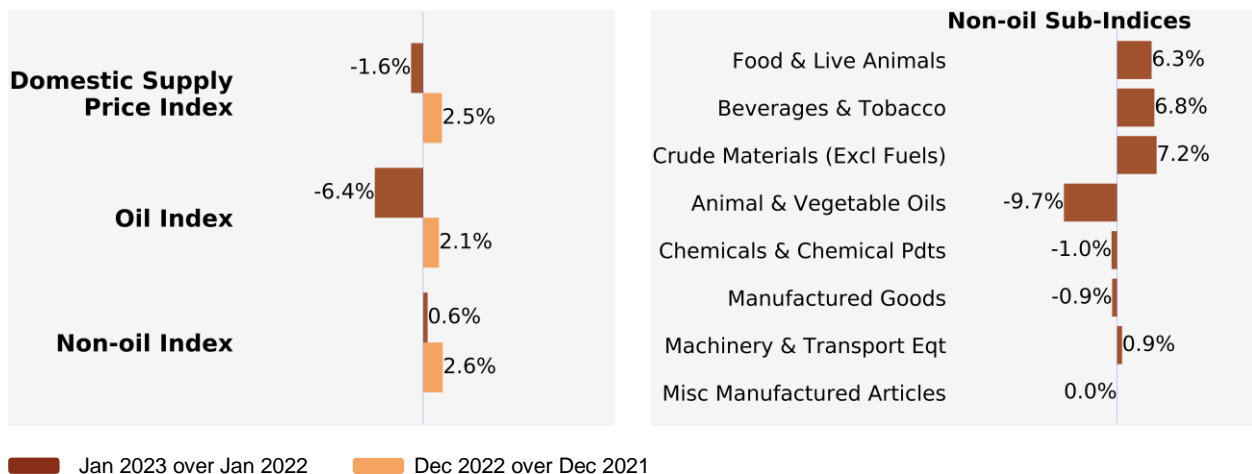
Month-on-Month Change



The Domestic Supply Price Index fell 0.9% in January 2023, following the 4.4% decline in December 2022. The Oil index gained 1.2%, reversing the 10.4% drop in the previous month. The Non-oil index fell 1.7% in January 2023, extending the 1.8% dip in December 2022.

Among the Non-oil sub-indices, the decreases were led by the Machinery & Transport Equipment (-2.4%) and Chemicals & Chemical Products (-1.0%) indices, due mainly to lower prices of electrical machinery apparatus and organic chemicals respectively. The falls were partially offset by the increase in the Beverages & Tobacco (1.0%) index, due mainly to higher prices of beverages, and the Food & Live Animals (0.5%) index.

Year-on-Year Change



The Domestic Supply Price Index fell 1.6% in January 2023 from a year ago, in contrast to the 2.5% increase in December 2022. The Oil index dropped 6.4% while the Non-oil index increased 0.6%.

For the Non-oil sub-indices, higher prices of Crude Materials (7.2%), Beverages & Tobacco (6.8%), Food & Live Animals (6.3%) and Machinery & Transport Equipment (0.9%) were partially offset by lower prices of Animal & Vegetable Oils (-9.7%), Chemicals & Chemical Products (-1.0%) and Manufactured Goods (-0.9%).

Technical Note

The **Singapore Manufactured Products Price Index (SMPPI)** monitors price changes of locally manufactured commodities. The weights of the index are derived from the distribution of local production by commodity in 2018. Ex-factory prices are obtained from principal manufacturers of the items concerned.

The **Domestic Supply Price Index (DSPI)** is designed to measure the changes in the price level of goods manufactured locally or imported which are retained for use in the domestic economy by the government, business or household sectors. For imported products, the prices refer to those paid by importers in bringing the goods into Singapore, commonly referred to as c.i.f. prices. In the case of Singapore manufactured products, the quotations used are ex-factory prices. The weight for each commodity item is proportional to the value of its total supply or availability in the domestic market in 2018.

Index Formula

The 2018-based series is compiled using the 'modified Laspeyres' formula where the weight reference period of 2017 preceded the price reference period of 2018. The geometric mean formula has been adopted in the computation of unweighted elementary aggregate price indices. The arithmetic mean formula is applied in compiling indices at higher levels of aggregation where weights of specific sub-indices are available.

Measurement of Changes in Price Indices

Change over previous month compares the index of the month with that of the preceding month. Such comparisons measure the change in the price index between two consecutive months. They serve as useful short-term indicators of the price movements.

Change over same period of previous year measures change in the index over a twelve-month period. Such comparisons compare the movement in the price index between similar months in two consecutive years.

Linking the Old 2012-Based Price Index Series to the New 2018-Based Price Index Series

The SMPPI and DSPI have been rebased from base year 2012 to base year 2018. To facilitate comparison of the historical price indices across base years, the old 2012-based series are linked to the new 2018-based series by re-scaling them via a Linked Coefficient. The Linked Coefficient is the ratio of the annual 2018-based index in 2018 to the annual 2012-based index in 2018.

Example: Linking the old Iron & Steel Index series for SMPPI prior to 2018, to the 2018-based Iron & Steel Index (2018=100)

1) Calculate the linked coefficient

Year	Iron & Steel Index (2012=100)	Iron & Steel Index (2018=100)	Linked Coefficient
2018	78.0	100.0	$100.0 \div 78.0 = 1.282$

2) Re-scaling the old series to the 2018-based series using the Linked Coefficient

Year	Month	Iron & Steel Index (2012=100)	Iron & Steel Index (2018=100)
2016	Dec	70.8	$70.8 \times 1.282 = 90.8$
2017	Jan	71.4	$71.4 \times 1.282 = 91.5$

Linking Method for Maintaining the Old Index Reference Period

To continue the old 2012-based index series going forward in time, re-scale the new 2018-based index series to the old base year 2012 level, via a Linked Coefficient. The Linked Coefficient is the ratio of the annual 2012-based index in 2018 to the annual 2018-based index in 2018.

Example: Linking the new 2018-based Iron & Steel Index series for SMPPI to the 2012-based Iron & Steel Index (2012=100)

1) Calculate the linked coefficient

Year	Iron & Steel Index (2018=100)	Iron & Steel Index (2012=100)	Linked Coefficient
2018	100.0	78.0	$78.0 \div 100.0 = 0.780$

2) Re-scaling the new series to the 2012-based series using the Linked Coefficient

Year	Month	Iron & Steel Index (2018=100)	Iron & Steel Index (2012=100)
2019	Jan	105.6	$105.6 \times 0.780 = 82.4$
2019	Feb	104.7	$104.7 \times 0.780 = 81.7$

Index Revision

The indices may be revised when late returns and amendments received from respondents are incorporated.

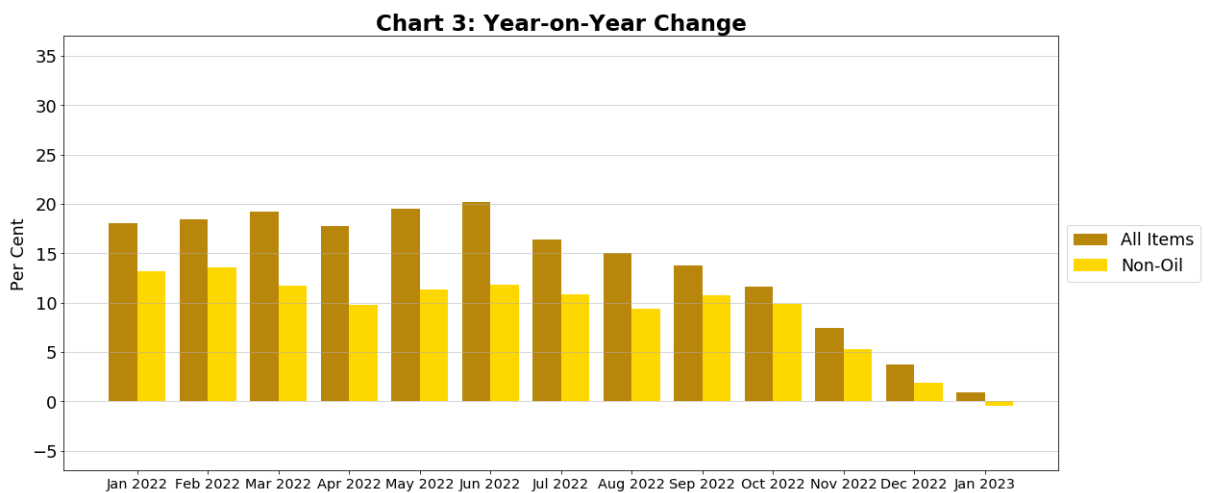
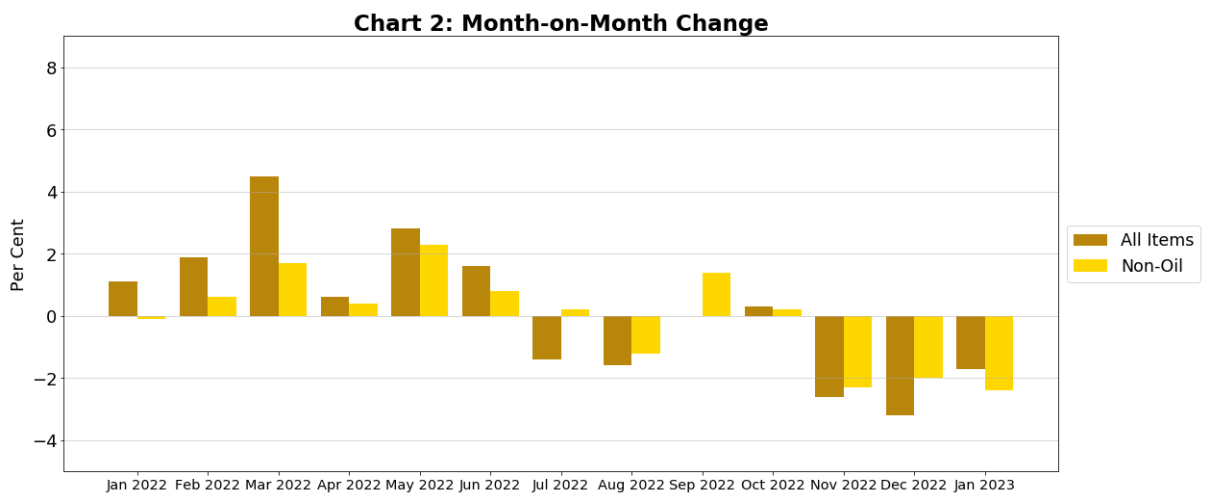
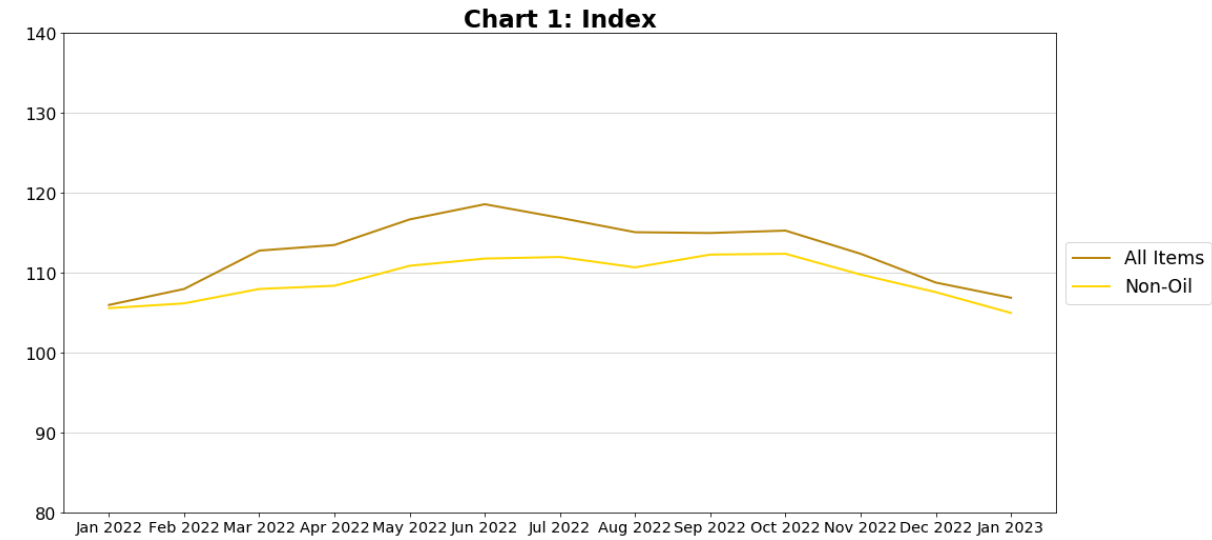
Dissemination of Data

The Singapore Manufactured Products and Domestic Supply Price Indices are available on the SingStat Website (www.singstat.gov.sg/tablebuilder). Excel tables for this month's report are available at <https://www.singstat.gov.sg/publications/economy/producer-price-indices> or through the QR code below:



Singapore Manufactured Products Price Index (2018 = 100)

January 2023



Domestic Supply Price Index (2018 = 100) January 2023

Chart 4: Index

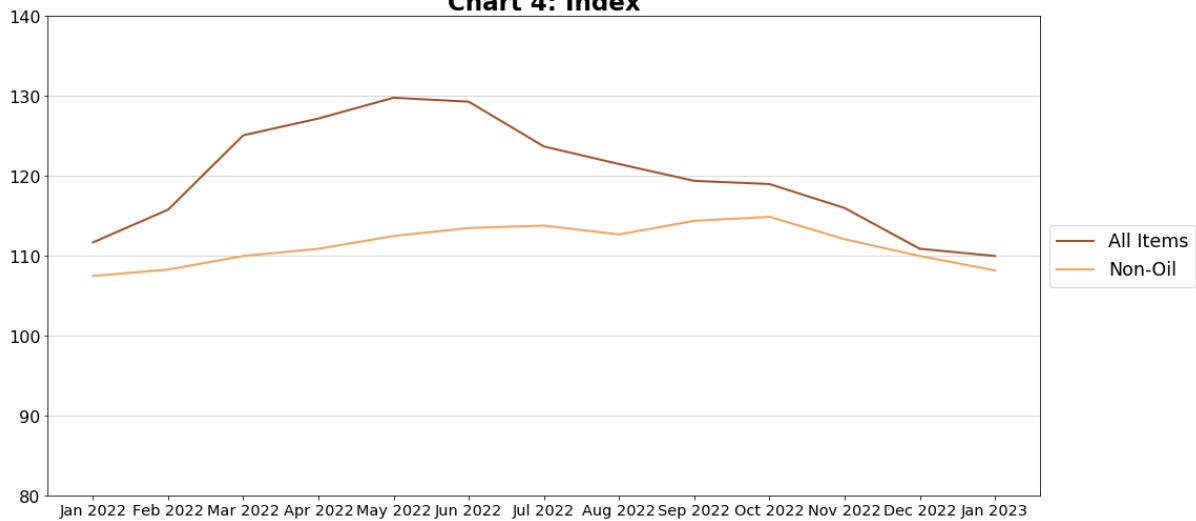


Chart 5: Month-on-Month Change

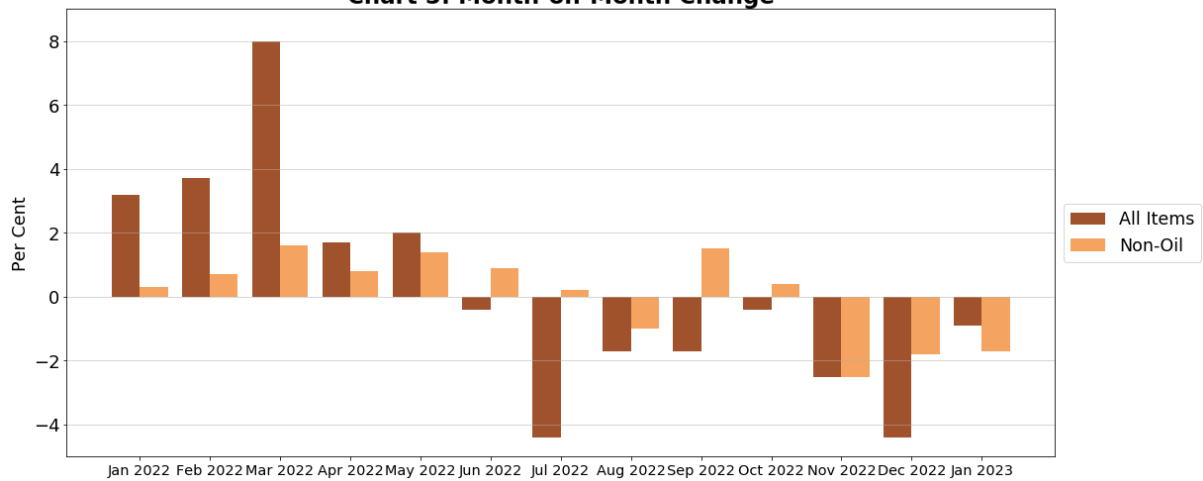


Chart 6: Year-on-Year Change

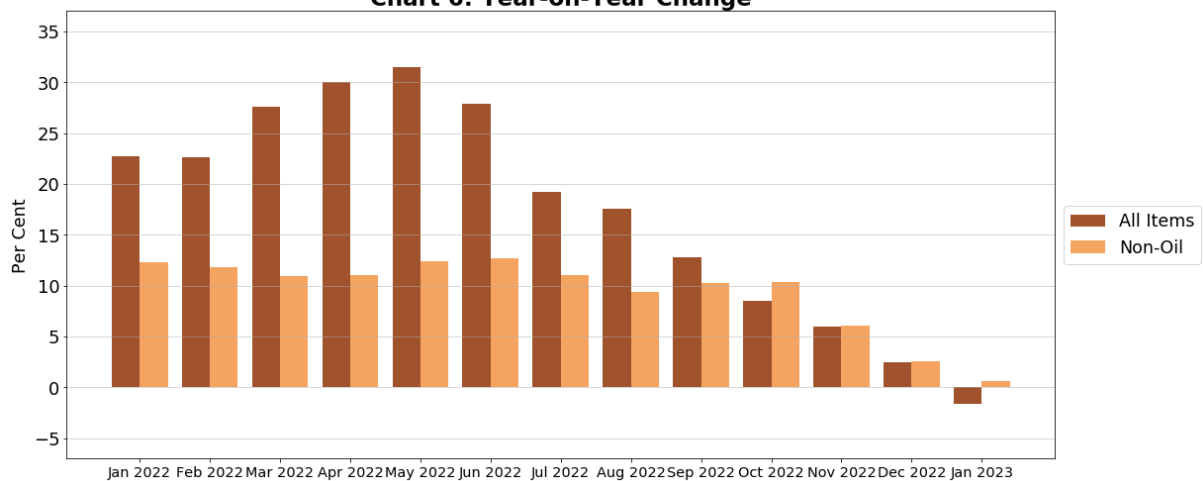


Table 1 Singapore Manufactured Products Price Index
January 2023

Commodity section / division	Weights	Index (2018=100)			% Change		
		Nov 2022	Dec 2022	Jan 2023	Dec 2022 Nov 2022	Jan 2023 Dec 2022	Jan 2023 Jan 2022
All Items	10,000	112.4	108.8	106.9	-3.2	-1.7	0.9
Non-oil Items	8,586	109.8	107.6	105.0	-2.0	-2.4	-0.5
Food & Live Animals	256	116.2	115.3	115.1	-0.7	-0.2	9.3
Meat & meat preparations	20	120.6	120.6	120.6	-	-	10.9
Dairy products & birds' eggs	15	170.2	162.4	161.0	-4.6	-0.9	1.7
Fish seafood & preparations	5	101.0	100.7	99.8	-0.3	-0.9	3.0
Cereals & cereal preparations	42	110.4	110.3	117.6	-0.1	6.6	11.2
Vegetables & fruit	3	106.7	107.7	107.7	0.9	-	6.2
Coffee, tea, cocoa, spices & manufactures	28	109.2	108.5	107.0	-0.6	-1.4	2.7
Animal feeding stuff (excl unmilled cereals)	6	111.4	110.3	107.9	-1.0	-2.1	0.8
Miscellaneous food preparations	135	113.7	113.1	111.0	-0.5	-1.9	12.0
Beverages & Tobacco	31	108.7	108.6	113.1	-	4.1	6.9
Beverages	31	108.7	108.6	113.1	-	4.1	6.9
Crude Materials (excl fuels)	56	134.3	130.9	122.0	-2.5	-6.8	11.0
Crude rubber	50	137.2	133.5	123.6	-2.7	-7.4	12.4
Cork & wood	1	124.7	124.7	124.6	-	-0.1	6.7
Crude fertilizers & minerals	2	94.8	94.8	94.8	-	-	-5.4
Metalliferous ores & metal scrap	4	113.5	113.3	112.7	-0.2	-0.5	-
Mineral Fuels, Lubricants & Related Materials	1,414	127.9	115.7	118.5	-9.6	2.5	9.0
Petroleum & products & related materials	1,386	128.2	115.6	118.7	-9.8	2.7	9.3
Gas	28	114.5	119.3	108.1	4.2	-9.4	-7.5
Animal & Vegetable Oils, Fats & Waxes	14	144.3	137.6	136.8	-4.6	-0.5	-9.9
Fixed vegetable fats & oils	14	144.3	137.6	136.8	-4.6	-0.5	-9.9
Chemicals & Chemical Products	2,165	98.7	96.4	92.7	-2.3	-3.8	-4.8
Organic chemicals	1,012	94.5	90.9	83.1	-3.9	-8.5	-11.3
Inorganic chemicals	40	99.4	98.8	98.7	-0.6	-0.1	14.9
Dyeing, tanning & colouring materials	22	121.9	115.0	109.4	-5.7	-4.9	-5.9
Medicinal & pharmaceutical products	232	82.1	83.5	86.3	1.6	3.4	-2.2
Essential oils & perfume; toilet cleaning products	133	123.6	122.6	123.4	-0.7	0.6	-2.0
Plastics in primary forms	372	100.1	99.0	96.6	-1.1	-2.4	-3.5
Plastics in non-primary forms	34	111.9	110.0	109.1	-1.6	-0.8	-1.3
Chemical materials & products nes	320	108.9	106.3	107.0	-2.4	0.6	7.2
Manufactured Goods	284	119.9	118.9	118.6	-0.9	-0.2	1.0
Rubber manufactures nes	23	104.4	104.7	100.8	0.3	-3.7	-1.3
Wood & cork manufactures (excl furniture)	8	103.6	103.6	103.5	-	-0.1	0.3
Paper manufactures	34	102.8	102.3	102.8	-0.5	0.5	1.3
Non-metal mineral manufactures nes	45	112.5	111.0	111.0	-1.4	-	3.1
Iron & steel	53	140.2	138.4	137.4	-1.3	-0.7	8.0
Non-ferrous metals	20	94.5	93.4	92.2	-1.2	-1.3	-19.8
Manufactures of metals nes	99	128.4	127.4	128.3	-0.7	0.7	0.5
Machinery & Transport Equipment	4,897	114.6	112.3	109.6	-2.1	-2.3	0.4
Power-generating machinery & equipment	8	90.4	95.2	94.8	5.3	-0.4	11.2
Machinery specialized for particular industries	571	109.0	109.3	108.7	0.3	-0.6	4.3
Metal working machinery	18	108.9	108.5	107.6	-0.4	-0.8	0.1
General industrial machinery	85	104.8	104.3	103.9	-0.5	-0.3	-
Office machines & data-processing machines	880	117.4	114.9	112.6	-2.1	-2.0	-1.8
Telecommunication apparatus	45	107.9	108.4	110.1	0.4	1.6	15.9
Electrical machinery apparatus nes, electrical parts	3,271	115.4	112.4	109.2	-2.6	-2.9	0.1
Road vehicles	20	103.5	103.7	104.5	0.2	0.8	2.6
Miscellaneous Manufactured Articles	883	103.2	101.5	100.4	-1.6	-1.0	0.1
Furniture, bedding, mattresses, cushions & others	16	102.5	102.5	102.0	-	-0.4	-0.4
Travel goods, handbags & similar containers	1	94.8	100.7	94.4	6.3	-6.2	-4.1
Professional scientific & controlling instruments	516	104.9	102.5	100.9	-2.3	-1.6	-0.3
Photographic & optical goods nes; watches & clocks	48	98.0	97.1	96.2	-1.0	-0.9	-0.6
Miscellaneous manufactured articles nes	303	101.0	100.4	100.3	-0.6	-0.1	0.8

Figures may not sum to total due to rounding.

Table 2 Domestic Supply Price Index
January 2023

Commodity section / division	Weights	Index (2018=100)			% Change		
		Nov 2022	Dec 2022	Jan 2023	Dec 2022 Nov 2022	Jan 2023 Dec 2022	Jan 2023 Jan 2022
All Items	10,000	116.0	110.9	110.0	-4.4	-0.9	-1.6
Non-oil Items	7,212	112.1	110.0	108.2	-1.8	-1.7	0.6
Food & Live Animals	319	117.0	116.4	117.0	-0.5	0.5	6.3
Live animals	10	140.6	139.8	140.9	-0.5	0.7	26.6
Meat & meat preparations	56	119.2	117.6	116.4	-1.4	-1.0	3.0
Dairy products & birds' eggs	43	138.2	137.1	138.0	-0.8	0.7	12.1
Fish seafood & preparations	42	109.0	108.2	106.6	-0.8	-1.4	1.2
Cereals & cereal preparations	51	109.3	109.4	113.7	0.1	4.0	9.8
Vegetables & fruit	40	119.7	120.3	121.8	0.5	1.2	5.6
Sugar, sugar preparations & honey	13	131.7	131.7	129.7	0.0	-1.5	8.4
Coffee, tea, cocoa, spices & manufactures	27	102.4	101.2	102.5	-1.2	1.3	-3.4
Animal feeding stuff (excl unmilled cereals)	3	116.4	117.8	115.9	1.2	-1.6	5.5
Miscellaneous food preparations	35	104.5	104.4	104.2	-0.1	-0.1	7.0
Beverages & Tobacco	30	117.6	116.8	118.0	-0.6	1.0	6.8
Beverages	28	118.3	117.6	118.4	-0.6	0.7	6.8
Tobacco & manufactures	2	108.3	107.4	113.7	-0.9	5.9	6.4
Crude Materials (excl fuels)	85	123.2	121.3	117.8	-1.6	-2.9	7.2
Oil seeds & oleaginous fruits	3	142.3	141.2	141.0	-0.8	-0.1	16.9
Crude rubber	31	133.4	129.6	120.7	-2.8	-6.9	10.9
Cork & wood	3	124.4	124.4	124.4	-	-	5.2
Crude fertilizers & minerals	34	114.0	113.1	112.7	-0.8	-0.3	6.3
Metalliferous ores & metal scrap	5	134.7	130.9	129.3	-2.8	-1.2	-4.4
Crude animal & vegetable materials nes	10	112.3	112.3	112.3	-	-	3.7
Mineral Fuels, Lubricants & Related Materials	2,788	126.3	113.2	114.6	-10.4	1.2	-6.4
Petroleum & products & related materials	2,669	127.7	114.0	115.7	-10.7	1.5	-6.4
Gas	119	94.4	95.2	89.1	0.8	-6.3	-8.6
Animal & Vegetable Oils, Fats & Waxes	42	158.8	153.5	149.9	-3.3	-2.4	-9.7
Fixed vegetable fats & oils	42	158.8	153.5	149.9	-3.3	-2.4	-9.7
Chemicals & Chemical Products	1,142	102.1	100.3	99.3	-1.8	-1.0	-1.0
Organic chemicals	459	93.9	91.7	90.0	-2.3	-1.9	-3.5
Inorganic chemicals	54	102.9	103.1	103.0	0.1	-	5.3
Dyeing, tanning & colouring materials	20	116.4	114.2	113.2	-2.0	-0.9	0.2
Medicinal & pharmaceutical products	95	103.0	103.2	104.1	0.2	0.9	2.7
Essential oils & perfume; toilet cleaning products	62	128.1	126.4	125.6	-1.4	-0.6	-6.5
Plastics in primary forms	158	103.5	102.5	100.9	-1.0	-1.5	-2.4
Plastics in non-primary forms	32	110.4	109.2	108.8	-1.1	-0.4	-0.3
Chemical materials & products nes	263	107.0	104.3	103.8	-2.6	-0.4	2.8
Manufactured Goods	490	118.7	117.4	116.5	-1.2	-0.8	-0.9
Rubber manufactures nes	15	101.5	100.5	101.6	-0.9	1.1	3.9
Wood & cork manufactures (excl furniture)	6	103.6	103.6	103.5	-	-0.1	0.3
Paper manufactures	53	107.0	105.8	105.1	-1.0	-0.7	2.7
Textile manufactures	15	103.3	101.4	99.7	-1.8	-1.7	-1.4
Non-metal mineral manufactures nes	123	116.2	115.0	113.7	-1.1	-1.2	3.6
Iron & steel	110	126.3	124.0	122.5	-1.8	-1.2	-5.0
Non-ferrous metals	80	131.9	131.2	130.8	-0.6	-0.3	-4.7
Manufactures of metals nes	86	114.5	113.2	112.9	-1.1	-0.3	0.2
Machinery & Transport Equipment	4,302	113.4	111.1	108.4	-2.1	-2.4	0.9
Power-generating machinery & equipment	205	125.2	124.1	121.8	-0.9	-1.9	-0.3
Machinery specialized for particular industries	189	101.9	100.3	98.5	-1.5	-1.8	-1.9
Metal working machinery	6	110.7	113.7	113.5	2.7	-0.2	6.7
General industrial machinery	90	101.7	100.7	101.2	-1.0	0.4	1.2
Office machines & data-processing machines	192	103.2	101.7	99.8	-1.4	-1.9	0.5
Telecommunications apparatus	53	84.4	82.6	81.3	-2.1	-1.6	-6.9
Electrical machinery apparatus nes, electrical parts	3,456	115.1	112.4	109.5	-2.3	-2.6	1.2
Road vehicles	111	100.4	100.8	100.5	0.3	-0.2	-1.2
Miscellaneous Manufactured Articles	802	109.1	107.7	107.1	-1.3	-0.6	-
Prefab building, sanitary plumbing, lighting nes	7	107.1	107.1	106.4	-	-0.6	0.8
Furniture, bedding, mattresses, cushions & others	23	117.1	117.5	117.3	0.4	-0.2	8.2
Travel goods, handbags & similar containers	39	122.0	121.5	124.3	-0.4	2.3	9.2
Articles of apparel & clothing accessories	25	101.2	102.3	102.1	1.0	-0.2	-1.8
Footwear	14	102.5	102.6	102.8	0.1	0.2	-2.3
Professional scientific & controlling instruments	409	106.0	103.6	102.0	-2.3	-1.6	-1.3
Photographic & optical goods nes; watches & clocks	75	108.2	106.3	107.0	-1.7	0.6	-1.4
Miscellaneous manufactured articles nes	211	113.6	113.6	113.6	-	-	0.4

Figures may not sum to total due to rounding.

Table 3 Singapore Manufactured Products Price Index

Section	All Items	Non-oil Items	Food & Live Animals	Beverages & Tobacco	Crude Materials	Mineral Fuels	Animal & Vegetable Oils, Fats & Waxes	Chemicals & Chemical Products	Manufactured Goods	Machinery & Transport Equipment	Misc Manufactured Articles
Weights	10,000	8,586	256	31	56	1,414	14	2,165	284	4,897	883
Index (2018=100)											
2018	100.0	100.0	100.0	100.0	100.0	100.0	100.0	100.0	100.0	100.0	100.0
2019	96.7	97.6	99.8	103.5	94.5	91.3	88.5	95.3	102.2	97.8	100.2
2020	90.0	95.4	101.3	103.6	89.2	57.3	95.8	87.3	105.7	97.1	100.6
2021	98.6	99.8	102.6	103.6	103.3	91.0	133.3	94.4	112.4	101.3	99.2
2022	113.3	109.6	111.3	107.9	123.5	135.2	167.7	101.6	120.4	113.5	102.2
Jan 2022	106.0	105.6	105.3	105.8	110.0	108.8	151.8	97.4	117.5	109.2	100.4
Feb 2022	108.0	106.2	105.5	105.8	110.4	119.0	163.6	99.7	118.1	109.3	100.4
Mar 2022	112.8	108.0	106.2	105.8	110.9	142.1	163.8	103.8	120.5	110.3	101.6
Apr 2022	113.5	108.4	107.6	108.6	111.9	144.2	170.6	104.2	120.7	110.6	102.0
May 2022	116.7	110.9	110.3	108.6	118.0	151.8	176.8	106.4	121.1	113.6	102.2
Jun 2022	118.6	111.8	112.0	108.6	115.8	160.0	182.1	104.9	121.4	115.7	102.2
Jul 2022	116.9	112.0	113.5	108.6	134.7	146.5	202.8	103.9	122.4	116.1	102.8
Aug 2022	115.1	110.7	113.1	108.6	132.3	141.7	180.0	101.1	121.6	115.2	102.5
Sep 2022	115.0	112.3	113.9	108.6	139.9	131.8	182.2	101.9	121.6	117.3	103.4
Oct 2022	115.3	112.4	116.1	108.6	132.3	132.8	156.8	101.2	120.7	117.9	104.3
Nov 2022	112.4	109.8	116.2	108.7	134.3	127.9	144.3	98.7	119.9	114.6	103.2
Dec 2022	108.8	107.6	115.3	108.6	130.9	115.7	137.6	96.4	118.9	112.3	101.5
Jan 2023	106.9	105.0	115.1	113.1	122.0	118.5	136.8	92.7	118.6	109.6	100.4
Percentage Change over same period of previous year (%)											
2019	-3.3	-2.4	-0.2	3.5	-5.5	-8.7	-11.5	-4.7	2.2	-2.2	0.2
2020	-6.9	-2.2	1.5	0.1	-5.6	-37.2	8.2	-8.3	3.5	-0.7	0.4
2021	9.5	4.6	1.3	-	15.8	58.7	39.2	8.1	6.4	4.3	-1.4
2022	14.9	9.9	8.4	4.1	19.5	48.5	25.8	7.7	7.1	12.1	3.0
Jan 2022	18.0	13.2	3.2	2.1	13.6	57.2	41.9	10.0	10.0	17.4	2.5
Feb 2022	18.4	13.6	3.8	2.1	12.5	53.0	50.1	14.3	10.2	16.3	2.1
Mar 2022	19.2	11.7	4.2	2.2	12.2	72.3	36.3	13.9	11.6	13.0	2.2
Apr 2022	17.8	9.8	5.1	4.8	13.7	76.9	38.7	10.0	10.1	11.0	2.6
May 2022	19.5	11.3	7.6	4.8	19.6	77.8	38.6	10.0	9.3	13.4	3.4
Jun 2022	20.2	11.8	9.2	4.8	17.2	76.0	35.6	11.5	8.3	13.7	3.3
Jul 2022	16.4	10.8	10.4	4.8	28.1	52.1	41.6	9.8	7.9	12.4	3.2
Aug 2022	15.0	9.4	9.9	4.8	26.4	52.0	24.7	5.5	6.2	12.1	3.2
Sep 2022	13.8	10.7	10.8	4.8	33.2	33.4	29.3	7.5	5.0	13.1	4.3
Oct 2022	11.6	9.9	12.6	4.8	18.8	21.1	5.7	4.7	3.6	13.1	5.0
Nov 2022	7.4	5.3	12.5	4.9	20.0	20.1	-3.9	-0.6	2.4	7.8	3.2
Dec 2022	3.7	1.9	11.2	4.8	17.0	15.1	-8.8	-2.6	1.2	3.2	1.1
Jan 2023	0.9	-0.5	9.3	6.9	11.0	9.0	-9.9	-4.8	1.0	0.4	0.1

Table 4 Domestic Supply Price Index

Section	All Items	Non-oil Items	Food & Live Animals	Beverages & Tobacco	Crude Materials	Mineral Fuels	Animal & Vegetable Oils, Fats & Waxes	Chemicals & Chemical Products	Manu- factured Goods	Machinery & Transport Equipment	Misc Manu- factured Articles
Weights	10,000	7,212	319	30	85	2,788	42	1,142	490	4,302	802
Index (2018=100)											
2018	100.0	100.0	100.0	100.0	100.0	100.0	100.0	100.0	100.0	100.0	100.0
2019	96.7	98.2	101.3	102.1	98.4	93.0	90.9	94.1	101.5	98.2	101.0
2020	88.4	97.6	103.6	104.1	97.2	64.4	103.6	87.7	102.2	98.0	104.0
2021	101.8	101.6	105.8	104.6	105.2	102.5	150.0	96.0	111.7	100.4	104.9
2022	120.8	111.7	114.5	114.6	117.4	144.3	176.7	104.8	120.1	112.1	109.1
Jan 2022	111.7	107.5	110.0	110.6	109.9	122.5	165.9	100.4	117.6	107.5	107.1
Feb 2022	115.8	108.3	110.3	110.9	110.2	135.4	175.0	102.8	118.2	107.8	107.6
Mar 2022	125.1	110.0	111.5	111.1	111.1	164.1	187.9	107.8	120.4	108.6	109.3
Apr 2022	127.2	110.9	112.8	113.5	111.7	169.4	194.2	108.1	121.5	109.7	109.8
May 2022	129.8	112.5	114.2	113.9	115.7	174.7	201.1	107.8	122.5	112.1	109.7
Jun 2022	129.3	113.5	114.3	113.9	114.8	170.2	195.2	107.4	122.2	114.0	109.5
Jul 2022	123.7	113.8	116.1	115.7	121.8	149.2	182.6	106.2	121.8	114.7	109.6
Aug 2022	121.5	112.7	116.4	116.1	120.3	144.2	174.5	104.4	120.2	113.6	109.4
Sep 2022	119.4	114.4	117.2	117.1	125.5	132.5	168.2	105.6	120.3	115.9	110.2
Oct 2022	119.0	114.9	118.0	118.2	122.9	129.7	163.7	104.6	120.3	116.9	110.5
Nov 2022	116.0	112.1	117.0	117.6	123.2	126.3	158.8	102.1	118.7	113.4	109.1
Dec 2022	110.9	110.0	116.4	116.8	121.3	113.2	153.5	100.3	117.4	111.1	107.7
Jan 2023	110.0	108.2	117.0	118.0	117.8	114.6	149.9	99.3	116.5	108.4	107.1
Percentage Change over same period of previous year (%)											
2019	-3.3	-1.8	1.3	2.1	-1.6	-7.0	-9.1	-5.9	1.5	-1.8	1.0
2020	-8.7	-0.6	2.2	2.0	-1.1	-30.7	13.9	-6.8	0.7	-0.2	2.9
2021	15.2	4.0	2.1	0.5	8.1	59.2	44.9	9.5	9.3	2.4	0.9
2022	18.6	10.0	8.2	9.5	11.6	40.8	17.8	9.2	7.5	11.7	4.0
Jan 2022	22.7	12.3	5.4	6.5	10.0	55.2	33.1	12.6	13.1	14.2	4.2
Feb 2022	22.6	11.8	4.6	6.8	9.6	53.5	35.1	14.2	11.8	13.1	4.0
Mar 2022	27.6	10.9	7.0	6.8	9.0	72.7	35.9	15.3	12.8	10.7	5.4
Apr 2022	30.0	11.0	8.3	8.8	9.3	83.0	36.1	13.4	13.0	11.1	5.3
May 2022	31.5	12.4	9.2	9.3	12.7	83.4	33.6	12.9	12.2	13.7	5.2
Jun 2022	27.9	12.7	8.6	9.1	11.3	66.6	31.9	13.2	9.7	14.7	4.8
Jul 2022	19.2	11.0	9.7	10.0	14.6	39.5	19.2	8.9	7.0	13.3	4.0
Aug 2022	17.6	9.4	9.7	10.2	12.6	38.3	11.7	6.3	5.1	11.8	3.5
Sep 2022	12.8	10.3	10.3	11.3	17.2	18.6	7.4	7.4	4.1	12.9	4.5
Oct 2022	8.5	10.4	10.4	12.6	12.4	4.4	-0.3	5.1	3.6	13.8	4.6
Nov 2022	6.0	6.1	8.9	11.9	11.6	5.7	-5.7	2.3	1.1	8.1	2.8
Dec 2022	2.5	2.6	6.7	11.1	8.7	2.1	-8.8	0.2	-0.6	3.7	0.5
Jan 2023	-1.6	0.6	6.3	6.8	7.2	-6.4	-9.7	-1.0	-0.9	0.9	-

NOTATIONS

- nes not elsewhere specified
- nil or negligible

NOTES

The Singapore Manufactured Products and Domestic Supply Price Indices report contains statistics that are the most recent available at the time of its preparation.

Some statistics, particularly those for the most recent time periods, are provisional and may be subject to revision in later issues.

SINGAPORE DEPARTMENT OF STATISTICS COMMUNICATIONS & INFORMATION SERVICES

Singapore Department of Statistics (DOS) offers official statistics, data insights, visualisations and statistical resources through user-friendly platforms.



SingStat Website

Visit this convenient gateway to access latest data and statistical information.

Data across the six major themes of Economy, Industry, Trade & Investment, Population, Households and Society, covering some 200 topics such as Gross Domestic Product, Consumer Price Index, Retail Sales and Food & Beverage Services Indices, Producer Price Indices, Business Expectations, Business Receipts Index, Trade in Services, Direct Investment, Population Indicators, Household Income, Household Expenditure, Deaths and Life Expectancy, Births and Fertility, Marriages and Divorces, and more.

Publications

- Information Papers which highlight conceptual and methodological changes and improvements in official statistics.
- Occasional Papers which present statistical trends and observations on important social and economic issues to stimulate discussion and research.
- eBook of Statistics which consolidates latest information and resources on key economic and socio-demographic domains.
- Singapore in Figures which allows exploration of key economic and socio-demographic statistics through interactive dashboards.
- Statistics Singapore Newsletter which features articles on latest key statistical activities, recent survey findings and methodological improvements.

Visualisations such as infographics and interactive dashboards with latest data, and videos to explain data and statistical concepts.

Data for Businesses with data tools to empower data-driven business decisions, giving firms insights on their customers, industries and business performance.

Advance Release Calendar providing dates of upcoming data releases in the next six months.



SingStat Table Builder

Access for free over 2,000 data tables across various economic and socio-demographic domains from 70 public sector agencies. Watch the [video](#) to find out how you can easily access and customise data tables.



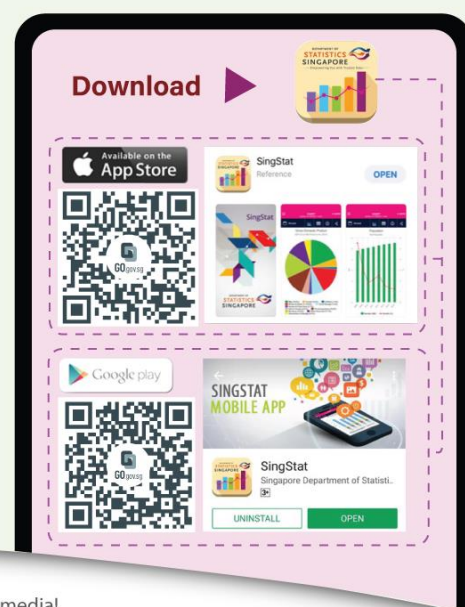
SingStat Mobile App

Download the free app for fast and convenient access to commonly used statistics from your mobile devices. More than 200 charts are available across 28 data categories for easy access to visualise data trends.



SingStat Express

Subscribe to receive alerts on the latest press releases, occasional/ information papers and newsletters.



Find us on social media!



Telegram



YouTube



LinkedIn

For statistical enquiries, you may reach us at:

✉ email: info@singstat.gov.sg or submit the [Data Request Form](#)

☎ phone: 1800-323 8118* (Local users) or (65) 6332 7738 (Overseas users)

* Calls from mobile telephone lines to 1800 local toll-free number may be subject to mobile airtime charges as imposed by the relevant mobile service provider.