



Singapore Manufactured Products & Domestic Supply Price Indices July 2020

**SINGAPORE MANUFACTURED PRODUCTS &
DOMESTIC SUPPLY PRICE INDICES, July 2020
ISSN 2591-7447**

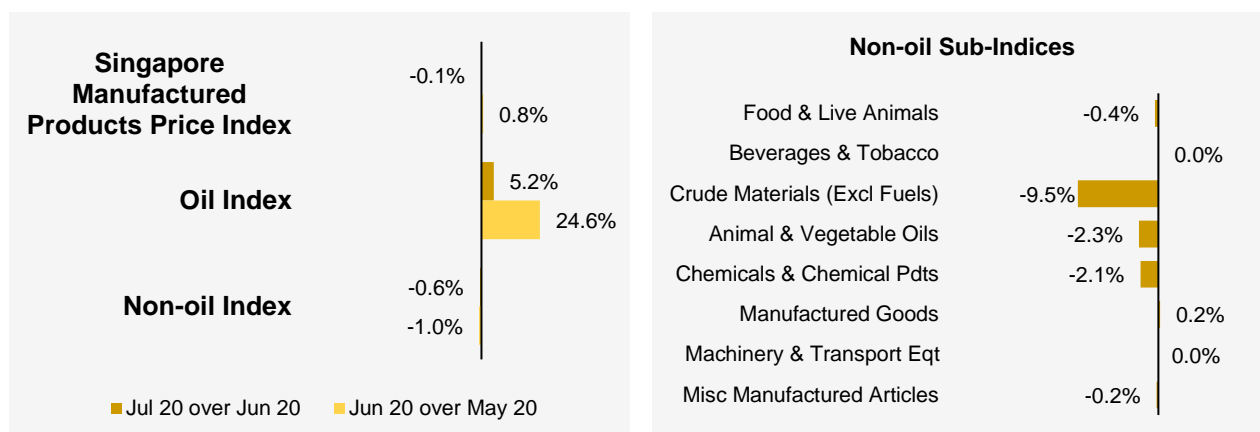
© Department of Statistics, Ministry of Trade & Industry, Republic of Singapore

Reproducing or quoting any part of this publication is permitted, provided this publication is accredited as the source. Please refer to the Statistics Singapore Website Terms of Use (<http://www.singstat.gov.sg/terms-of-use>) for more details on the conditions of use of this publication.

Statistical activities conducted by the Singapore Department of Statistics are governed by the provisions of the Statistics Act (Cap. 317). The Act guarantees the confidentiality of information collected from individuals and companies. It spells out the legislative authority and responsibility of the Chief Statistician. The Act is available in the Department's Website (www.singstat.gov.sg).

Singapore Manufactured Products Price Index (2018 = 100) July 2020

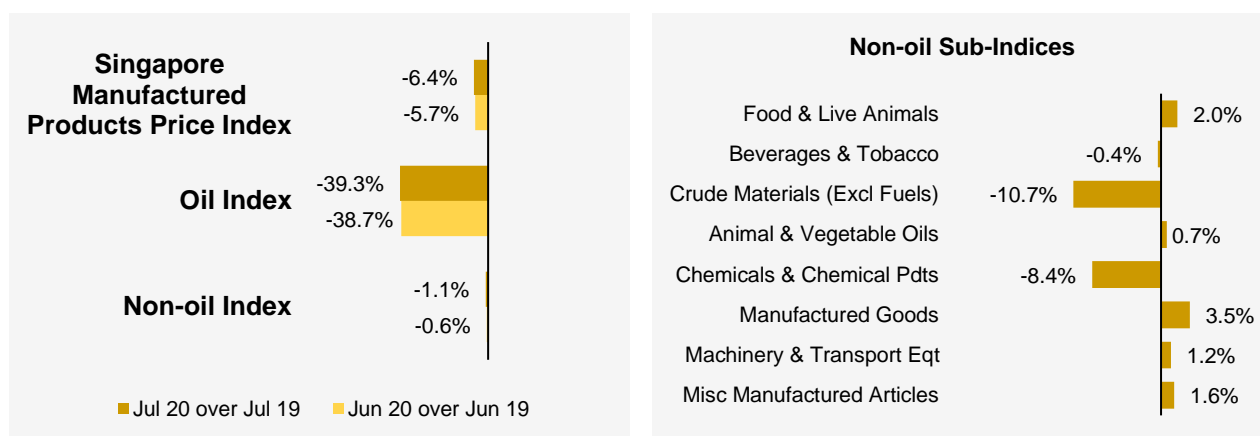
Month-on-Month Change



The Singapore Manufactured Products Price Index fell 0.1% in July 2020, in contrast to the 0.8% increase in June 2020. The Oil index increased 5.2%, extending the 24.6% increase in the previous month. The Non-oil index fell 0.6%, continuing the 1.0% decline in June 2020.

For the Non-oil sub-indices, declines led by the Crude Materials (-9.5%) and Chemicals & Chemical Products (-2.1%) indices due mainly to lower prices of rubber products and organic chemicals respectively, were partially moderated by the increase in the Manufactured Goods (0.2%) index.

Year-on-Year Change

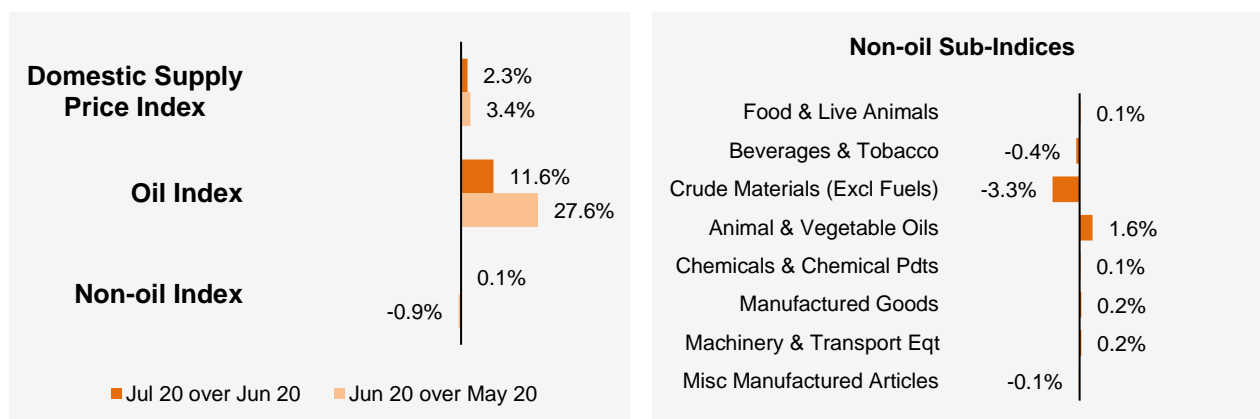


The Singapore Manufactured Products Price Index fell 6.4% in July 2020 from a year ago, following the 5.7% decrease in June 2020. The Oil and Non-oil indices fell 39.3% and 1.1% respectively.

For the Non-oil sub-indices, lower prices of Crude Materials (-10.7%), Chemicals & Chemical Products (-8.4%) and Beverages & Tobacco (-0.4%) were partially offset by higher prices of Manufactured Goods (3.5%), Food & Live Animals (2.0%), Miscellaneous Manufactured Articles (1.6%), Machinery & Transport Equipment (1.2%) and Animal & Vegetable Oils (0.7%).

Domestic Supply Price Index (2018 = 100) July 2020

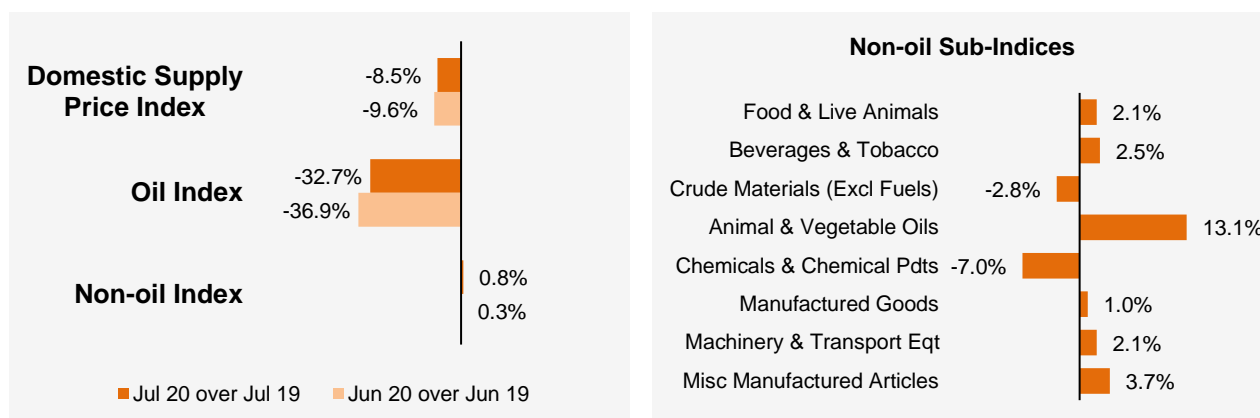
Month-on-Month Change



The Domestic Supply Price Index increased 2.3% in July 2020, following the 3.4% increase in June 2020. The Oil index rose 11.6%, extending the 27.6% increase in the previous month. The Non-oil index rose 0.1%, against the 0.9% decrease in June 2020.

Among the Non-oil sub-indices, increases in the Machinery & Transport Equipment (0.2%) and Chemicals & Chemical Products (0.1%) indices were partially moderated by the decreases led by Crude Materials (-3.3%) index due mainly to lower prices of rubber products, and the Miscellaneous Manufactured Articles (-0.1%) index.

Year-on-Year Change



The Domestic Supply Price Index fell 8.5% in July 2020 from a year ago, following the 9.6% decrease in June 2020. The Oil index decreased 32.7% while the Non-oil index rose 0.8%.

For the Non-oil sub-indices, higher prices of Animal & Vegetable Oils (13.1%), Miscellaneous Manufactured Articles (3.7%), Beverages & Tobacco (2.5%), Machinery & Transport Equipment (2.1%), Food & Live Animals (2.1%) and Manufactured Goods (1.0%) were partially offset by lower prices of Chemicals & Chemical Products (-7.0%) and Crude Materials (-2.8%).

Technical Note

The **Singapore Manufactured Products Price Index (SMPPI)** monitors price changes of locally manufactured commodities. The weights of the index are derived from the distribution of local production by commodity in 2018. Ex-factory prices are obtained from principal manufacturers of the items concerned.

The **Domestic Supply Price Index (DSPI)** is designed to measure the changes in the price level of goods manufactured locally or imported which are retained for use in the domestic economy by the government, business or household sectors. For imported products, the prices refer to those paid by importers in bringing the goods into Singapore, commonly referred to as c.i.f. prices. In the case of Singapore manufactured products, the quotations used are ex-factory prices. The weight for each commodity item is proportional to the value of its total supply or availability in the domestic market in 2018.

Index Formula

The 2018-based series is compiled using the 'modified Laspeyres' formula where the weight reference period of 2017 preceded the price reference period of 2018. The geometric mean formula has been adopted in the computation of unweighted elementary aggregate price indices. The arithmetic mean formula is applied in compiling indices at higher levels of aggregation where weights of specific sub-indices are available.

Measurement of Changes in Price Indices

Change over previous month compares the index of the month with that of the preceding month. Such comparisons measure the change in the price index between two consecutive months. They serve as useful short-term indicators of the price movements.

Change over same period of previous year measures change in the index over a twelve-month period. Such comparisons compare the movement in the price index between similar months in two consecutive years.

Linking the Old 2012-Based Price Index Series to the New 2018-Based Price Index Series

The SMPPI and DSPI have been rebased from base year 2012 to base year 2018. To facilitate comparison of the historical price indices across base years, the old 2012-based series are linked to the new 2018-based series by re-scaling them via a Linked Coefficient. The Linked Coefficient is the ratio of the annual 2018-based index in 2018 to the annual 2012-based index in 2018.

Example : Linking the old Iron & Steel Index series for SMPPI prior to 2018, to the 2018-based Iron & Steel Index (2018=100)

1) Calculate the linked coefficient

Year	Iron & Steel Index (2012=100)	Iron & Steel Index (2018=100)	Linked Coefficient
2018	78.0	100.0	$100.0 \div 78.0 = 1.282$

2) Re-scaling the old series to the 2018-based series using the Linked Coefficient

Year	Month	Iron & Steel Index (2012=100)	Iron & Steel Index (2018=100)
2016	Dec	70.8	$70.8 \times 1.282 = 90.8$
2017	Jan	71.4	$71.4 \times 1.282 = 91.5$

Linking Method for Maintaining the Old Index Reference Period

To continue the old 2012-based index series going forward in time, re-scale the new 2018-based index series to the old base year 2012 level, via a Linked Coefficient. The Linked Coefficient is the ratio of the annual 2012-based index in 2018 to the annual 2018-based index in 2018.

Example : Linking the new 2018-based Iron & Steel Index series for SMPPI to the 2012-based Iron & Steel Index (2012=100)

1) Calculate the linked coefficient

Year	Iron & Steel Index (2018=100)	Iron & Steel Index (2012=100)	Linked Coefficient
2018	100.0	78.0	$78.0 \div 100.0 = 0.780$

2) Re-scaling the new series to the 2012-based series using the Linked Coefficient

Year	Month	Iron & Steel Index (2018=100)	Iron & Steel Index (2012=100)
2019	Jan	105.6	$105.6 \times 0.780 = 82.4$
2019	Feb	104.7	$104.7 \times 0.780 = 81.7$

Index Revision

The indices may be revised when late returns and amendments received from respondents are incorporated.

Dissemination of Data

The Singapore Manufactured Products and Domestic Supply Price Indices are available on the SingStat Website (www.singstat.gov.sg/tablebuilder). Excel tables for this month's report are available at <https://www.singstat.gov.sg/publications/economy/producer-price-indices> or through the QR code below:



Singapore Manufactured Products Price Index (2018 = 100) July 2020

Chart 1: Index

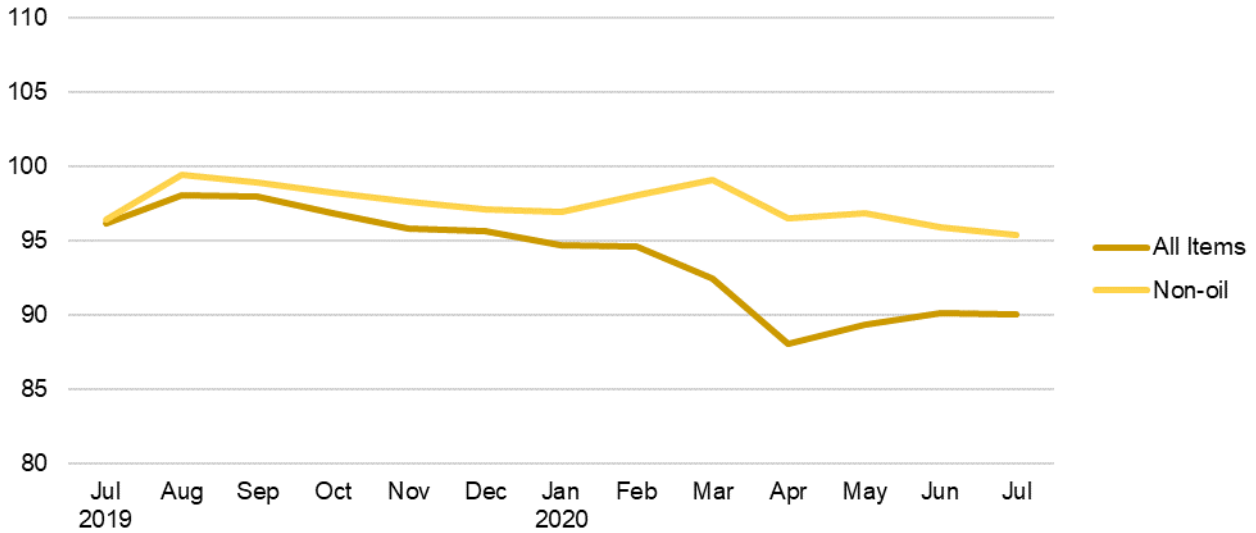


Chart 2: Month-on-Month Change

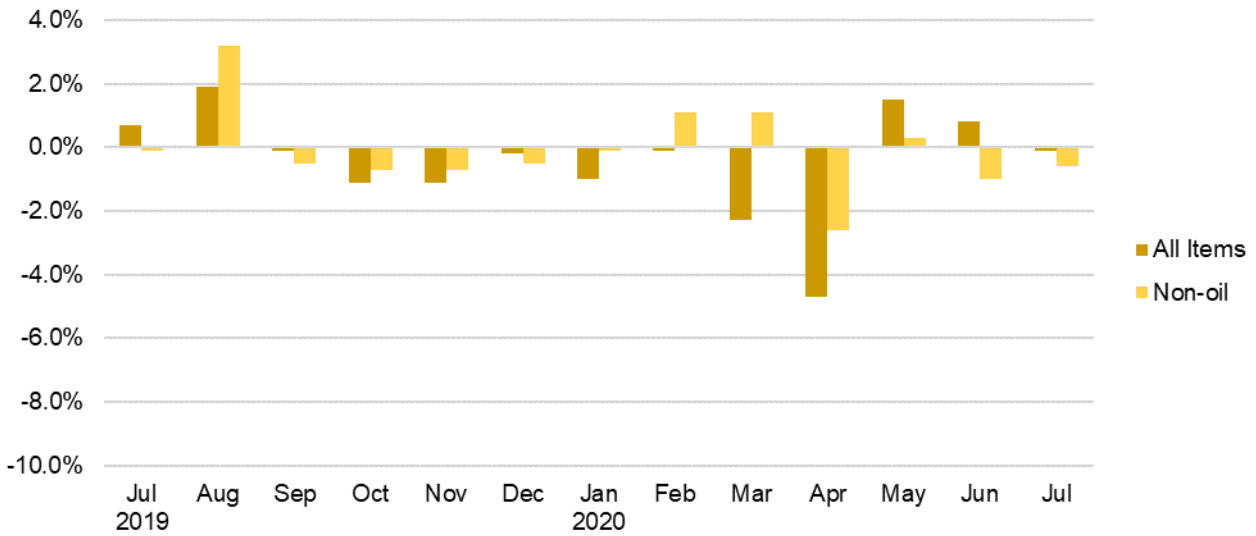
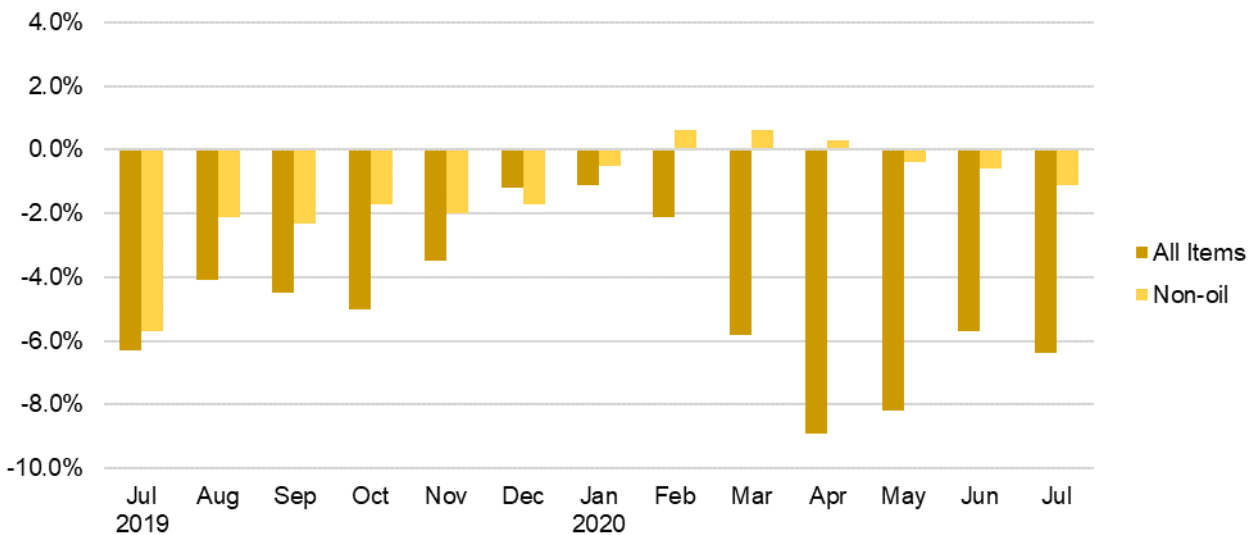


Chart 3: Year-on-Year Change



Domestic Supply Price Index (2018 = 100) July 2020

Chart 4: Index

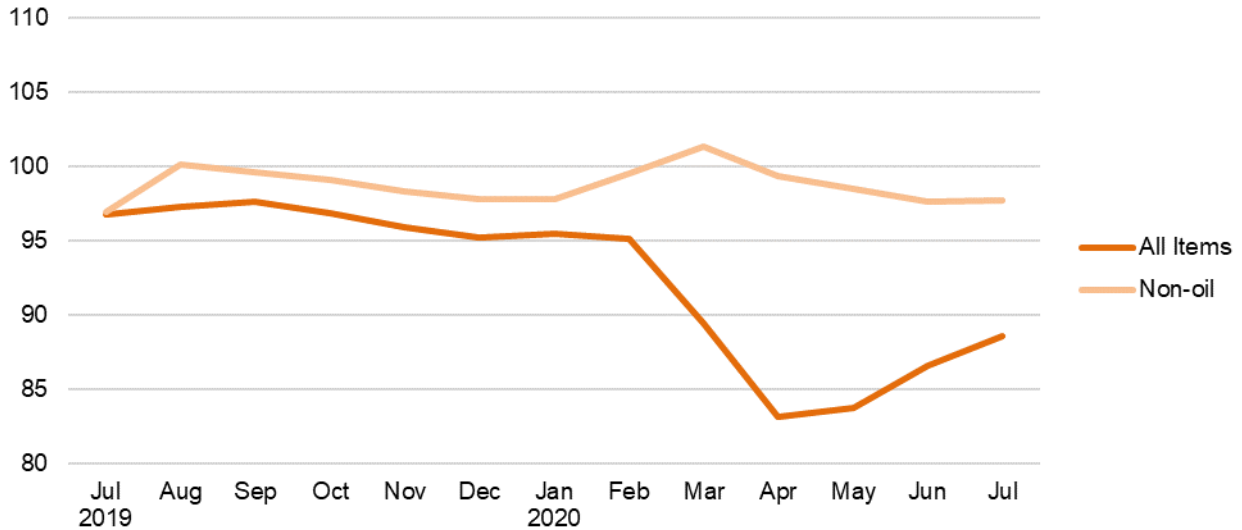


Chart 5: Month-on-Month Change

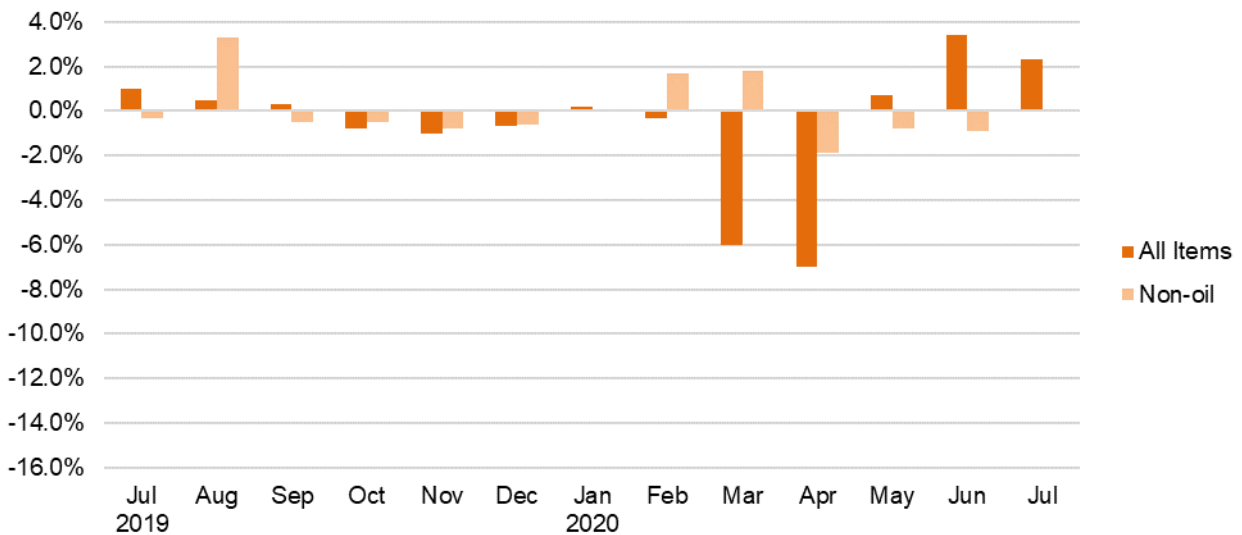


Chart 6: Year-on-Year Change

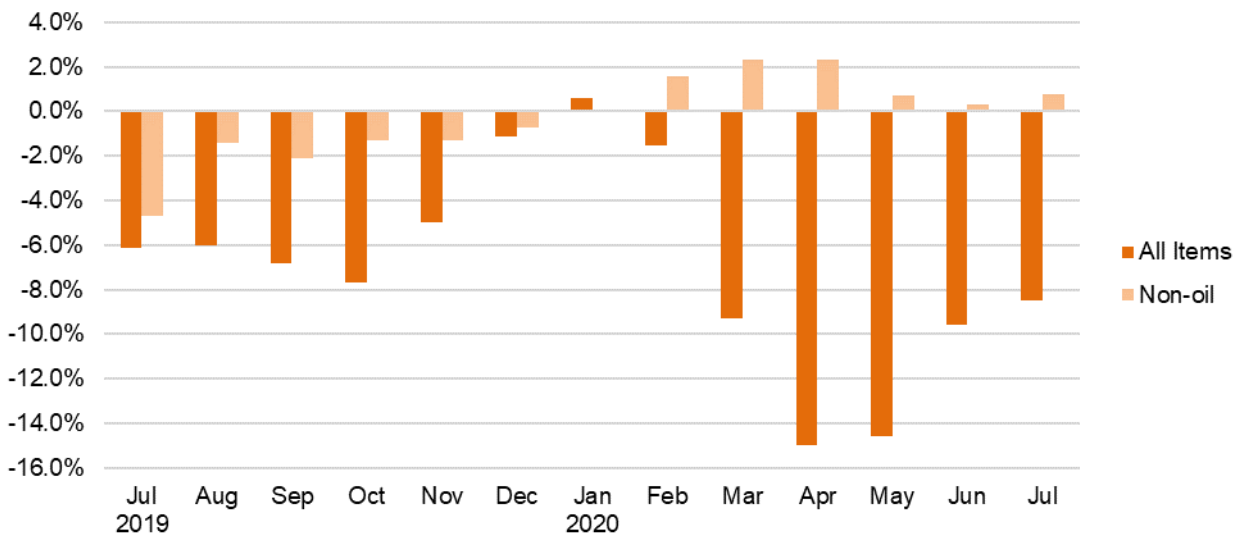


Table 1 Singapore Manufactured Products Price Index
July 2020

Commodity section / division	Weights	Index (2018=100)			% Change		
		May 2020	Jun 2020	Jul 2020	Jun 2020	Jul 2020	Jul 2020
					May 2020	Jun 2020	Jul 2019
All Items	10,000	89.3	90.1	90.0	0.8	-0.1	-6.4
Non-oil Items	8,586	96.8	95.9	95.3	-1.0	-0.6	-1.1
Food & Live Animals	256	102.0	101.6	101.2	-0.4	-0.4	2.0
Meat & meat preparations	20	106.5	108.0	108.1	1.4	0.1	5.0
Dairy products & birds' eggs	15	109.1	108.8	106.8	-0.3	-1.9	2.6
Fish seafood & preparations	5	96.3	96.1	96.0	-0.3	-0.1	3.6
Cereals & cereal preparations	42	104.3	104.3	104.2	-0.1	-0.1	3.4
Vegetables & fruit	3	100.0	100.0	100.0	-	-	0.7
Coffee, tea, cocoa, spices & manufactures	28	99.6	98.2	97.8	-1.3	-0.4	4.3
Animal feeding stuff (excl unmilled cereals)	6	93.6	92.9	90.8	-0.7	-2.3	-11.6
Miscellaneous food preparations	135	100.9	100.3	100.0	-0.6	-0.3	1.3
Beverages & Tobacco	31	103.6	103.6	103.6	-	-	-0.4
Beverages	31	103.6	103.6	103.6	-	-	-0.4
Crude Materials (excl fuels)	56	92.0	91.5	82.8	-0.6	-9.5	-10.7
Crude rubber	50	91.0	90.3	80.4	-0.8	-11.0	-12.4
Cork & wood	1	100.9	100.9	100.9	-	-	0.5
Crude fertilizers & minerals	2	108.9	108.9	108.9	-	-	-
Metalliferous ores & metal scrap	4	95.6	97.6	100.1	2.1	2.6	2.3
Mineral Fuels, Lubricants & Related Materials	1,414	43.9	54.7	57.6	24.6	5.2	-39.3
Petroleum & products & related materials	1,386	43.6	54.6	57.5	25.4	5.3	-39.6
Gas	28	59.6	57.3	59.5	-3.8	3.9	-12.2
Animal & Vegetable Oils, Fats & Waxes	14	100.3	91.0	88.9	-9.3	-2.3	0.7
Fixed vegetable fats & oils	14	100.3	91.0	88.9	-9.3	-2.3	0.7
Chemicals & Chemical Products	2,165	87.8	88.0	86.1	0.2	-2.1	-8.4
Organic chemicals	1,012	81.3	82.5	78.5	1.6	-4.9	-13.8
Inorganic chemicals	40	106.4	110.1	110.0	3.5	-	7.0
Dyeing, tanning & colouring materials	22	102.3	101.8	101.4	-0.5	-0.4	0.9
Medicinal & pharmaceutical products	232	90.7	90.3	89.8	-0.5	-0.5	-3.9
Essential oils & perfume; toilet cleaning products	133	102.7	101.7	101.2	-1.1	-0.5	2.9
Plastics in primary forms	372	85.4	84.2	85.1	-1.4	1.1	-8.7
Plastics in non-primary forms	34	101.4	100.0	98.7	-1.4	-1.3	-0.5
Chemical materials & products nes	320	98.2	97.2	96.9	-1.0	-0.3	-3.5
Manufactured Goods	284	106.0	104.9	105.1	-1.1	0.2	3.5
Rubber manufactures nes	23	101.0	99.7	100.2	-1.3	0.5	0.8
Wood & cork manufactures (excl furniture)	8	98.9	98.9	98.9	-	-	-0.4
Paper manufactures	34	95.9	96.5	96.3	0.6	-0.2	-5.2
Non-metal mineral manufactures nes	45	99.7	99.7	99.7	0.1	-	-5.5
Iron & steel	53	107.0	104.5	105.6	-2.3	1.0	-1.7
Non-ferrous metals	20	95.7	94.6	96.5	-1.2	2.0	-0.9
Manufactures of metals nes	99	115.7	114.1	113.7	-1.4	-0.4	16.0
Machinery & Transport Equipment	4,897	99.1	97.5	97.5	-1.6	-	1.2
Power-generating machinery & equipment	8	85.5	85.5	86.1	-	0.8	-5.0
Machinery specialized for particular industries	571	100.0	100.1	98.7	-	-1.3	-0.7
Metal working machinery	18	107.2	107.5	107.5	0.3	-	0.7
General industrial machinery	85	103.0	102.3	102.2	-0.7	-0.1	2.7
Office machines & data-processing machines	880	105.5	107.1	106.1	1.6	-0.9	1.2
Telecommunication apparatus	45	96.1	96.6	97.1	0.6	0.5	2.5
Electrical machinery apparatus nes, electrical parts	3,271	97.1	94.3	94.9	-2.8	0.6	1.6
Road vehicles	20	103.8	102.2	97.7	-1.5	-4.5	-4.8
Miscellaneous Manufactured Articles	883	102.0	101.8	101.6	-0.3	-0.2	1.6
Furniture, bedding, mattresses, cushions & others	16	100.1	100.1	100.1	-	-	-
Travel goods, handbags & similar containers	1	104.5	100.5	97.9	-3.8	-2.6	-5.3
Professional scientific & controlling instruments	516	101.9	101.3	100.9	-0.6	-0.3	0.6
Photographic & optical goods nes; watches & clocks	48	103.4	101.4	101.1	-1.9	-0.3	2.2
Miscellaneous manufactured articles nes	303	102.0	102.7	102.9	0.7	0.2	3.3

Figures may not sum to total due to rounding.

Table 2 Domestic Supply Price Index

July 2020

Commodity section / division	Weights	Index (2018=100)			% Change		
					Jun 2020	Jul 2020	Jul 2020
		May 2020	Jun 2020	Jul 2020	May 2020	Jun 2020	Jul 2019
All Items	10,000	83.7	86.5	88.5	3.4	2.3	-8.5
Non-oil Items	7,212	98.5	97.6	97.7	-0.9	0.1	0.8
Food & Live Animals	319	104.9	103.6	103.7	-1.3	0.1	2.1
Live animals	10	98.9	101.6	100.0	2.7	-1.5	1.2
Meat & meat preparations	56	108.0	107.4	107.6	-0.5	0.1	4.6
Dairy products & birds' eggs	43	112.3	110.4	110.5	-1.8	0.1	6.1
Fish seafood & preparations	42	98.5	97.8	96.8	-0.7	-1.0	-0.6
Cereals & cereal preparations	51	103.9	103.5	103.4	-0.4	-0.1	2.4
Vegetables & fruit	40	106.6	104.7	107.2	-1.8	2.4	-2.2
Sugar, sugar preparations & honey	13	105.8	106.4	106.5	0.6	-	8.1
Coffee, tea, cocoa, spices & manufactures	27	103.5	95.8	95.8	-7.4	-0.1	1.0
Animal feeding stuff (excl unmilled cereals)	3	100.4	100.4	101.5	-	1.1	2.8
Miscellaneous food preparations	35	100.8	100.5	100.0	-0.3	-0.5	0.1
Beverages & Tobacco	30	104.8	105.2	104.9	0.4	-0.4	2.5
Beverages	28	104.8	105.3	105.5	0.5	0.2	3.2
Tobacco & manufactures	2	105.1	104.5	96.7	-0.6	-7.4	-5.2
Crude Materials (excl fuels)	85	98.3	97.9	94.7	-0.4	-3.3	-2.8
Oil seeds & oleaginous fruits	3	116.6	116.3	113.3	-0.2	-2.6	12.6
Crude rubber	31	91.8	91.0	82.0	-0.9	-9.9	-11.3
Cork & w ood	3	95.1	94.3	94.3	-0.8	-	-5.4
Crude fertilizers & minerals	34	103.6	103.3	103.2	-0.3	-0.1	1.5
Metalliferous ores & metal scrap	5	88.5	88.9	92.6	0.5	4.1	-2.0
Crude animal & vegetable materials nes	10	101.6	101.6	101.0	-	-0.6	3.2
Mineral Fuels, Lubricants & Related Materials	2,788	45.5	58.0	64.7	27.6	11.6	-32.7
Petroleum & products & related materials	2,669	45.6	58.5	65.3	28.3	11.8	-32.2
Gas	119	42.8	48.2	51.5	12.7	6.8	-42.6
Animal & Vegetable Oils, Fats & Waxes	42	95.8	97.0	98.5	1.2	1.6	13.1
Fixed vegetable fats & oils	42	95.8	97.0	98.5	1.2	1.6	13.1
Chemicals & Chemical Products	1,142	85.1	86.4	86.5	1.5	0.1	-7.0
Organic chemicals	459	65.8	68.9	69.2	4.6	0.4	-17.1
Inorganic chemicals	54	106.2	108.0	109.3	1.7	1.2	4.6
Dyeing, tanning & colouring materials	20	110.1	109.3	109.1	-0.7	-0.2	0.5
Medicinal & pharmaceutical products	95	100.3	99.7	99.6	-0.6	-0.1	-0.4
Essential oils & perfume; toilet cleaning products	62	101.7	100.6	100.6	-1.1	-	1.3
Plastics in primary forms	158	88.0	87.6	88.1	-0.4	0.5	-7.1
Plastics in non-primary forms	32	104.8	103.5	103.0	-1.2	-0.5	1.5
Chemical materials & products nes	263	99.1	99.8	99.4	0.6	-0.4	-0.7
Manufactured Goods	490	102.3	101.8	102.0	-0.5	0.2	1.0
Rubber manufactures nes	15	98.7	99.4	104.8	0.7	5.5	11.1
Wood & cork manufactures (excl furniture)	6	98.9	98.9	98.9	-	-	-0.4
Paper manufactures	53	97.1	96.8	96.6	-0.4	-0.2	-3.2
Textile manufactures	15	104.0	103.4	103.3	-0.6	-0.1	1.4
Non-metal mineral manufactures nes	123	103.4	103.3	102.9	-0.1	-0.4	0.4
Iron & steel	110	102.4	100.2	100.3	-2.2	0.1	-2.8
Non-ferrous metals	80	101.2	102.3	103.8	1.1	1.5	4.7
Manufactures of metals nes	86	105.5	104.5	103.9	-0.9	-0.6	4.2
Machinery & Transport Equipment	4,302	99.7	98.2	98.4	-1.5	0.2	2.1
Pow er-generating machinery & equipment	205	115.9	114.1	113.6	-1.6	-0.4	7.8
Machinery specialized for particular industries	189	102.6	101.8	100.8	-0.8	-1.0	0.6
Metal w orking machinery	6	105.9	105.7	105.6	-0.2	-	3.9
General industrial machinery	90	103.4	102.3	101.6	-1.1	-0.6	3.3
Office machines & data-processing machines	192	102.3	100.6	101.1	-1.7	0.5	-0.3
Telecommunication apparatus	53	89.0	86.7	84.9	-2.5	-2.1	-13.6
Electrical machinery apparatus nes, electrical parts	3,456	98.5	96.9	97.3	-1.6	0.4	2.2
Road vehicles	111	102.4	102.2	101.5	-0.3	-0.6	-0.4
Miscellaneous Manufactured Articles	802	105.8	104.8	104.7	-0.9	-0.1	3.7
Prefab building, sanitary plumbing, lighting nes	7	99.2	98.2	98.2	-1.0	-	-4.6
Furniture, bedding, mattresses, cushions & others	23	105.5	104.7	105.7	-0.8	1.0	1.8
Travel goods, handbags & similar containers	39	99.6	99.3	99.3	-0.2	-0.1	-4.1
Articles of apparel & clothing accessories	25	102.5	101.8	101.5	-0.6	-0.3	1.3
Footw ear	14	100.4	100.0	99.9	-0.4	-0.1	1.0
Professional scientific & controlling instruments	409	104.0	102.8	102.4	-1.1	-0.4	1.7
Photographic & optical goods nes; w atches & clocks	75	107.9	106.9	107.2	-0.9	0.3	6.8
Miscellaneous manufactured articles nes	211	110.8	109.9	110.0	-0.7	0.1	9.0

Figures may not sum to total due to rounding.

Table 3 Singapore Manufactured Products Price Index

Section	All Items	Non-oil Items	Food & Live Animals	Beverages & Tobacco	Crude Materials	Mineral Fuels	Animal & Vegetable Oils, Fats & Waxes	Chemicals & Chemical Products	Manufactured Goods	Machinery & Transport Equipment	Misc. Manufactured Articles
Weights	10,000	8,586	256	31	56	1,414	14	2,165	284	4,897	883
Index (2018=100)											
2016	92.2	97.9	99.7	103.0	94.8	66.4	113.6	88.0	96.2	105.2	95.4
2017	95.8	98.6	99.5	98.4	94.7	83.0	119.3	92.5	97.8	103.0	97.2
2018	100.0	100.0	100.0	100.0	100.0	100.0	100.0	100.0	100.0	100.0	100.0
2019	96.7	97.6	99.8	103.5	94.5	91.3	88.5	95.3	102.2	97.8	100.2
2019											
Jul	96.1	96.4	99.2	104.0	92.8	94.8	88.3	93.9	101.6	96.4	100.0
Aug	98.0	99.4	99.5	104.0	94.3	89.4	88.3	95.6	102.0	100.7	101.3
Sep	98.0	98.9	100.1	104.0	94.2	92.3	86.5	95.2	103.1	99.8	101.1
Oct	96.9	98.2	100.7	104.0	94.4	88.4	87.2	94.3	103.9	99.2	100.3
Nov	95.8	97.6	100.9	104.0	93.9	85.0	87.3	93.8	105.0	98.3	99.6
Dec	95.6	97.1	101.2	104.0	93.3	86.8	88.4	92.4	105.8	98.0	99.3
2020											
Jan	94.7	96.9	101.2	103.6	93.8	80.8	94.0	93.3	107.4	97.4	99.0
Feb	94.6	98.0	101.6	103.6	94.7	73.7	97.7	92.4	107.7	99.4	100.3
Mar	92.4	99.1	102.5	103.6	95.3	52.1	100.8	89.5	106.6	102.2	101.9
Apr	88.1	96.5	102.2	103.6	92.8	36.8	99.1	85.4	105.7	99.5	102.3
May	89.3	96.8	102.0	103.6	92.0	43.9	100.3	87.8	106.0	99.1	102.0
Jun	90.1	95.9	101.6	103.6	91.5	54.7	91.0	88.0	104.9	97.5	101.8
Jul	90.0	95.3	101.2	103.6	82.8	57.6	88.9	86.1	105.1	97.5	101.6
Percentage Change over same period of previous year (%)											
2017	3.8	0.7	-0.2	-4.4	-0.1	25.0	5.0	5.1	1.6	-2.2	1.9
2018	4.4	1.4	0.5	1.6	5.6	20.5	-16.2	8.1	2.3	-2.9	2.9
2019	-3.3	-2.4	-0.2	3.5	-5.5	-8.7	-11.5	-4.7	2.2	-2.2	0.2
2019											
Jul	-6.3	-5.7	-0.6	4.0	-11.0	-9.9	-12.1	-9.0	1.0	-5.8	-0.4
Aug	-4.1	-2.1	-0.6	4.1	-11.8	-15.8	-10.8	-6.7	1.3	-0.7	0.8
Sep	-4.5	-2.3	-	4.1	-11.7	-16.8	-10.6	-6.2	2.1	-1.3	0.3
Oct	-5.0	-1.7	0.3	4.1	-10.0	-22.8	-8.6	-6.9	2.8	0.2	-0.7
Nov	-3.5	-2.0	1.0	4.0	-8.3	-13.3	-5.4	-7.0	3.7	-0.2	-1.3
Dec	-1.2	-1.7	0.9	4.0	-8.0	2.0	-3.2	-7.5	4.1	0.5	-1.5
2020											
Jan	-1.1	-0.5	1.7	1.8	-4.6	-5.0	4.4	-4.2	6.2	0.7	-1.1
Feb	-2.1	0.6	2.2	1.8	-2.3	-19.7	9.0	-4.9	6.7	2.6	0.5
Mar	-5.8	0.6	2.8	1.8	-1.0	-45.6	13.2	-7.3	5.2	3.3	2.0
Apr	-8.9	0.3	3.2	-0.6	-0.4	-62.9	10.6	-10.9	5.6	4.4	2.5
May	-8.2	-0.4	2.5	-0.5	-2.2	-55.1	12.3	-8.8	5.6	2.5	1.0
Jun	-5.7	-0.6	2.4	-0.4	-1.7	-38.7	2.5	-6.9	4.2	1.3	1.2
Jul	-6.4	-1.1	2.0	-0.4	-10.7	-39.3	0.7	-8.4	3.5	1.2	1.6

Table 4 Domestic Supply Price Index

Section	All Items	Non-oil Items	Food & Live Animals	Beverages & Tobacco	Crude Materials	Mineral Fuels	Animal & Vegetable Oils, Fats & Waxes	Chemicals & Chemical Products	Manu-factured Goods	Machinery & Transport Equipment	Misc. Manu-factured Articles
Weights	10,000	7,212	319	30	85	2,788	42	1,142	490	4,302	802
Index (2018=100)											
2016	87.8	99.2	99.2	100.6	99.7	61.6	111.5	90.4	93.2	103.2	100.7
2017	94.0	100.2	101.0	98.9	98.8	79.7	114.1	95.5	96.8	102.2	101.3
2018	100.0	100.0	100.0	100.0	100.0	100.0	100.0	100.0	100.0	100.0	100.0
2019	96.7	98.2	101.3	102.1	98.4	93.0	90.9	94.1	101.5	98.2	101.0
2019											
Jul	96.7	96.9	101.5	102.3	97.4	96.2	87.1	93.0	101.0	96.5	101.0
Aug	97.2	100.1	101.9	102.9	99.1	89.7	89.4	94.4	101.5	101.0	102.5
Sep	97.6	99.6	102.3	102.8	98.6	92.3	89.6	94.5	102.1	100.0	102.5
Oct	96.8	99.1	102.8	102.5	98.5	90.9	90.0	93.6	102.2	99.4	102.0
Nov	95.9	98.3	102.4	102.3	98.5	89.5	94.1	92.5	102.4	98.6	101.3
Dec	95.2	97.8	102.7	102.2	98.5	88.5	99.0	90.4	102.3	98.2	101.0
2020											
Jan	95.4	97.8	103.6	102.7	98.9	89.3	103.4	91.3	101.7	97.9	101.1
Feb	95.1	99.5	103.7	103.7	99.5	83.9	102.5	92.5	103.0	100.0	102.6
Mar	89.4	101.3	103.9	104.2	100.0	58.6	100.3	90.7	103.1	103.0	104.9
Apr	83.1	99.3	105.1	104.9	98.6	41.1	98.0	85.7	102.5	100.9	106.1
May	83.7	98.5	104.9	104.8	98.3	45.5	95.8	85.1	102.3	99.7	105.8
Jun	86.5	97.6	103.6	105.2	97.9	58.0	97.0	86.4	101.8	98.2	104.8
Jul	88.5	97.7	103.7	104.9	94.7	64.7	98.5	86.5	102.0	98.4	104.7
Percentage Change over same period of previous year (%)											
2017	7.0	1.0	1.9	-1.7	-0.9	29.4	2.4	5.7	3.8	-1.0	0.6
2018	6.4	-0.2	-1.0	1.1	1.2	25.5	-12.4	4.7	3.3	-2.1	-1.3
2019	-3.3	-1.8	1.3	2.1	-1.6	-7.0	-9.1	-5.9	1.5	-1.8	1.0
2019											
Jul	-6.1	-4.7	1.7	2.3	-4.7	-9.5	-13.1	-8.7	0.3	-5.5	0.4
Aug	-6.0	-1.4	1.7	2.9	-4.1	-17.3	-9.0	-8.0	0.8	-0.6	1.9
Sep	-6.8	-2.1	1.7	2.6	-4.6	-17.9	-7.3	-7.7	1.6	-1.9	1.7
Oct	-7.7	-1.3	2.1	2.4	-4.0	-22.1	-5.0	-8.2	1.6	-0.4	1.1
Nov	-5.0	-1.3	2.2	2.1	-3.2	-14.3	3.6	-7.0	2.0	-0.7	0.6
Dec	-1.1	-0.7	2.3	2.0	-2.1	-2.4	9.5	-6.2	1.4	-	0.6
2020											
Jan	0.6	0.1	2.9	1.4	-0.3	2.0	13.1	-4.2	1.7	0.5	0.9
Feb	-1.5	1.6	3.8	2.5	1.0	-10.1	12.5	-3.4	2.1	2.4	2.8
Mar	-9.3	2.3	4.2	2.8	1.6	-39.9	11.5	-5.2	1.5	3.5	5.0
Apr	-15.0	2.3	5.0	2.9	1.0	-58.7	8.1	-10.1	1.4	4.8	6.0
May	-14.6	0.7	4.2	2.7	0.1	-54.0	6.7	-10.8	0.7	2.6	4.8
Jun	-9.6	0.3	2.5	3.2	0.2	-36.9	9.7	-7.8	0.6	1.5	3.7
Jul	-8.5	0.8	2.1	2.5	-2.8	-32.7	13.1	-7.0	1.0	2.1	3.7

NOTATIONS

- nes not elsewhere specified
- nil or negligible

NOTES

The Singapore Manufactured Products and Domestic Supply Price Indices report contains statistics that are the most recent available at the time of its preparation.

Some statistics, particularly those for the most recent time periods, are provisional and may be subject to revision in later issues.