



Singapore Manufactured Products & Domestic Supply Price Indices July 2023

www.singstat.gov.sg

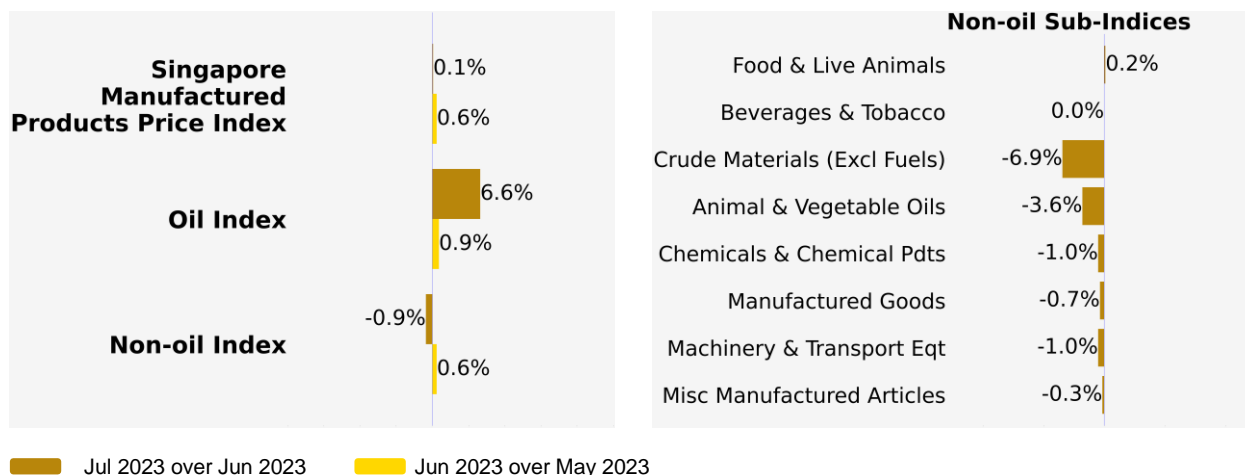
**SINGAPORE MANUFACTURED PRODUCTS &
DOMESTIC SUPPLY PRICE INDICES, July 2023
ISSN 2591-7447**

© Department of Statistics, Ministry of Trade & Industry, Republic of Singapore

Reproducing or quoting any part of this publication is permitted, provided this publication is accredited as the source. Please refer to the SingStat Website Terms of Use (<http://www.singstat.gov.sg/terms-of-use>) for more details on the conditions of use of this publication.

Singapore Manufactured Products Price Index (2018 = 100) July 2023

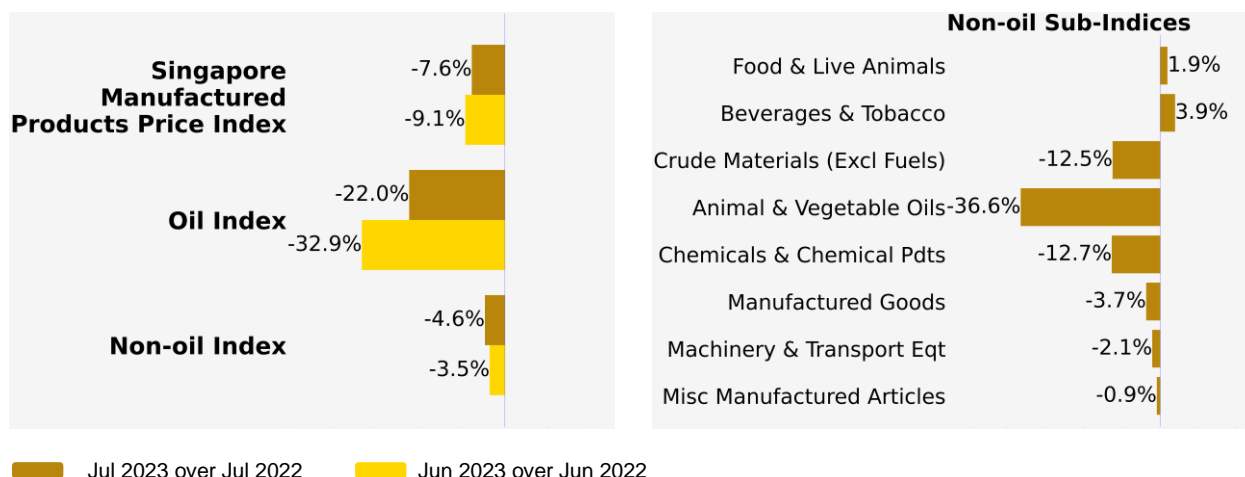
Month-on-Month Change



The Singapore Manufactured Products Price Index rose 0.1% in July 2023, following the 0.6% increase in June 2023. The Oil index gained 6.6%, extending the 0.9% increase in the previous month. The Non-oil index fell 0.9% in July 2023, reversing the 0.6% increase in June 2023.

Among the Non-oil sub-indices, the decreases were led by the Machinery & Transport Equipment (-1.0%) and Chemicals & Chemical Products (-1.0%) indices, due mainly to lower prices of electrical machinery apparatus and organic chemicals respectively. The decreases were partially offset by increases in the Food & Live Animals (0.2%) index.

Year-on-Year Change

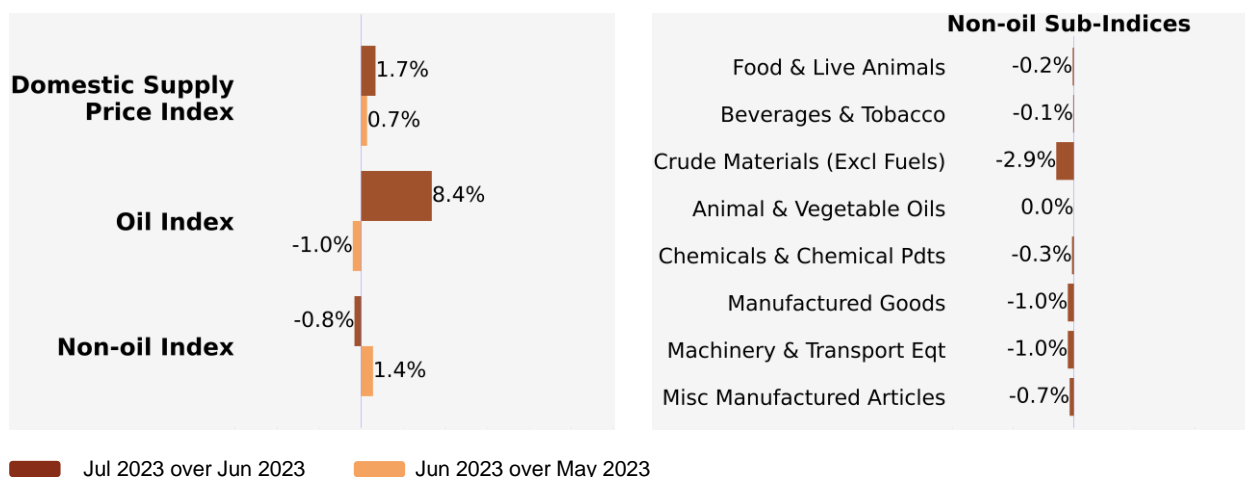


The Singapore Manufactured Products Price Index fell 7.6% in July 2023 from a year ago, following the 9.1% decrease in June 2023. The Oil and Non-oil indices contracted by 22.0% and 4.6% respectively.

For the Non-oil sub-indices, lower prices of Animal & Vegetable Oils (-36.6%), Chemicals & Chemical Products (-12.7%), Crude Materials (-12.5%), Manufactured Goods (-3.7%), Machinery & Transport Equipment (-2.1%) and Miscellaneous Manufactured Articles (-0.9%) were partially offset by higher prices of Beverages & Tobacco (3.9%) and Food & Live Animals (1.9%).

Domestic Supply Price Index (2018 = 100) July 2023

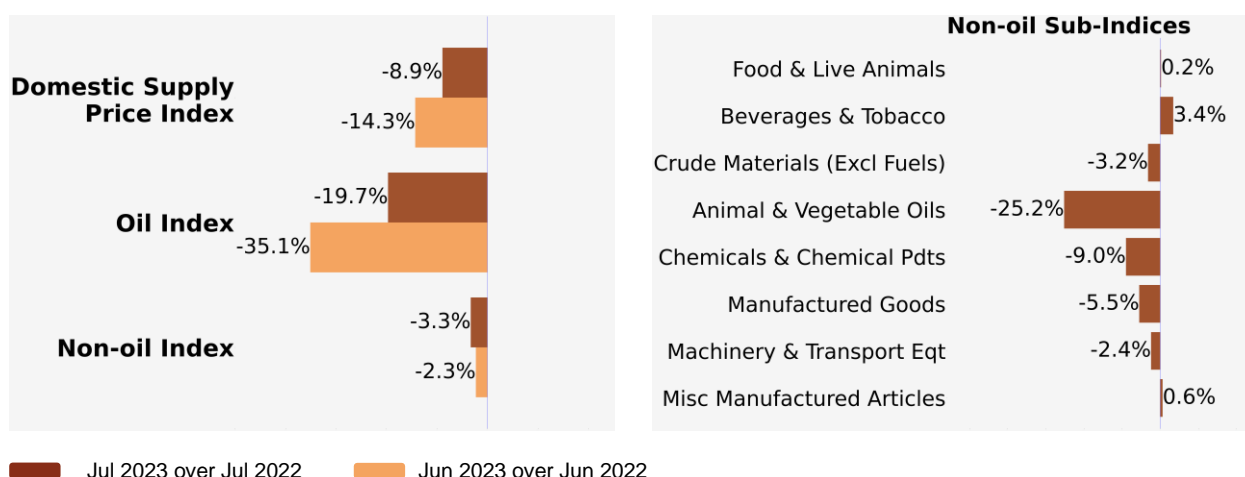
Month-on-Month Change



The Domestic Supply Price Index rose 1.7% in July 2023, following the 0.7% increase in June 2023. The Oil index gained 8.4%, reversing the 1.0% decrease in the previous month. The Non-oil index fell 0.8% in July 2023, in contrast to the 1.4% increase in June 2023.

All the Non-oil sub-indices fell except for Animal & Vegetable Oils. The decreases were led by the Machinery & Transport Equipment (-1.0%) and Manufactured Goods (-1.0%) indices, due mainly to lower prices of electrical machinery apparatus and iron & steel respectively, and the Miscellaneous Manufactured Articles (-0.7%) index.

Year-on-Year Change



The Domestic Supply Price Index fell 8.9% in July 2023 from a year ago, following the 14.3% decrease in June 2023. The Oil and Non-oil indices fell 19.7% and 3.3% respectively.

For the Non-oil sub-indices, lower prices of Animal & Vegetable Oils (-25.2%), Chemicals & Chemical Products (-9.0%), Manufactured Goods (-5.5%), Crude Materials (-3.2%) and Machinery & Transport Equipment (-2.4%) were partially offset by higher prices of Beverages & Tobacco (3.4%), Miscellaneous Manufactured Articles (0.6%) and Food & Live Animals (0.2%).

Technical Note

The **Singapore Manufactured Products Price Index (SMPPI)** monitors price changes of locally manufactured commodities. The weights of the index are derived from the distribution of local production by commodity in 2018. Ex-factory prices are obtained from principal manufacturers of the items concerned.

The **Domestic Supply Price Index (DSPI)** is designed to measure the changes in the price level of goods manufactured locally or imported which are retained for use in the domestic economy by the government, business or household sectors. For imported products, the prices refer to those paid by importers in bringing the goods into Singapore, commonly referred to as c.i.f. prices. In the case of Singapore manufactured products, the quotations used are ex-factory prices. The weight for each commodity item is proportional to the value of its total supply or availability in the domestic market in 2018.

Index Formula

The 2018-based series is compiled using the 'modified Laspeyres' formula where the weight reference period of 2017 preceded the price reference period of 2018. The geometric mean formula has been adopted in the computation of unweighted elementary aggregate price indices. The arithmetic mean formula is applied in compiling indices at higher levels of aggregation where weights of specific sub-indices are available.

Measurement of Changes in Price Indices

Change over previous month compares the index of the month with that of the preceding month. Such comparisons measure the change in the price index between two consecutive months. They serve as useful short-term indicators of the price movements.

Change over same period of previous year measures change in the index over a twelve-month period. Such comparisons compare the movement in the price index between similar months in two consecutive years.

Linking the Old 2012-Based Price Index Series to the New 2018-Based Price Index Series

The SMPPI and DSPI have been rebased from base year 2012 to base year 2018. To facilitate comparison of the historical price indices across base years, the old 2012-based series are linked to the new 2018-based series by re-scaling them via a Linked Coefficient. The Linked Coefficient is the ratio of the annual 2018-based index in 2018 to the annual 2012-based index in 2018.

Example: Linking the old Iron & Steel Index series for SMPPI prior to 2018, to the 2018-based Iron & Steel Index (2018=100)

1) Calculate the linked coefficient

| Year | Iron & Steel Index (2012=100) | Iron & Steel Index (2018=100) | Linked Coefficient |
|------|----------------------------------|----------------------------------|---------------------------|
| 2018 | 78.0 | 100.0 | $100.0 \div 78.0 = 1.282$ |

2) Re-scaling the old series to the 2018-based series using the Linked Coefficient

| Year | Month | Iron & Steel Index (2012=100) | Iron & Steel Index (2018=100) |
|------|-------|----------------------------------|----------------------------------|
| 2016 | Dec | 70.8 | $70.8 \times 1.282 = 90.8$ |
| 2017 | Jan | 71.4 | $71.4 \times 1.282 = 91.5$ |

Linking Method for Maintaining the Old Index Reference Period

To continue the old 2012-based index series going forward in time, re-scale the new 2018-based index series to the old base year 2012 level, via a Linked Coefficient. The Linked Coefficient is the ratio of the annual 2012-based index in 2018 to the annual 2018-based index in 2018.

Example: Linking the new 2018-based Iron & Steel Index series for SMPPI to the 2012-based Iron & Steel Index (2012=100)

1) Calculate the linked coefficient

| Year | Iron & Steel Index (2018=100) | Iron & Steel Index (2012=100) | Linked Coefficient |
|------|----------------------------------|----------------------------------|---------------------------|
| 2018 | 100.0 | 78.0 | $78.0 \div 100.0 = 0.780$ |

2) Re-scaling the new series to the 2012-based series using the Linked Coefficient

| Year | Month | Iron & Steel Index (2018=100) | Iron & Steel Index (2012=100) |
|------|-------|----------------------------------|----------------------------------|
| 2019 | Jan | 105.6 | $105.6 \times 0.780 = 82.4$ |
| 2019 | Feb | 104.7 | $104.7 \times 0.780 = 81.7$ |

Index Revision

The indices may be revised when late returns and amendments received from respondents are incorporated.

Dissemination of Data

The Singapore Manufactured Products and Domestic Supply Price Indices are available on the SingStat Website (www.singstat.gov.sg/tablebuilder). Excel tables for this month's report are available at <https://www.singstat.gov.sg/publications/economy/producer-price-indices> or through the QR code below:



Singapore Manufactured Products Price Index (2018 = 100) July 2023

Chart 1: Index

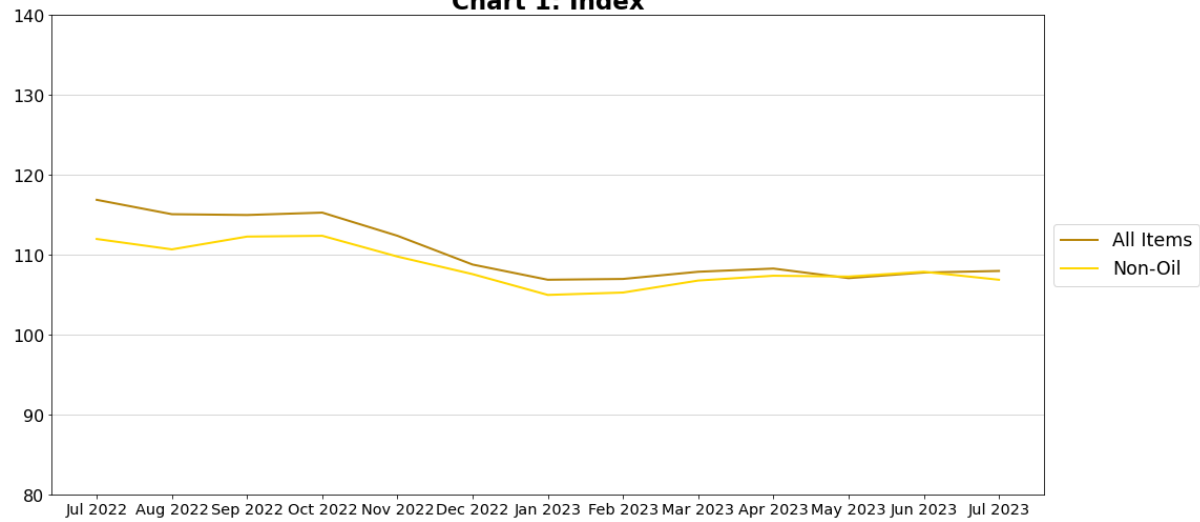


Chart 2: Month-on-Month Change

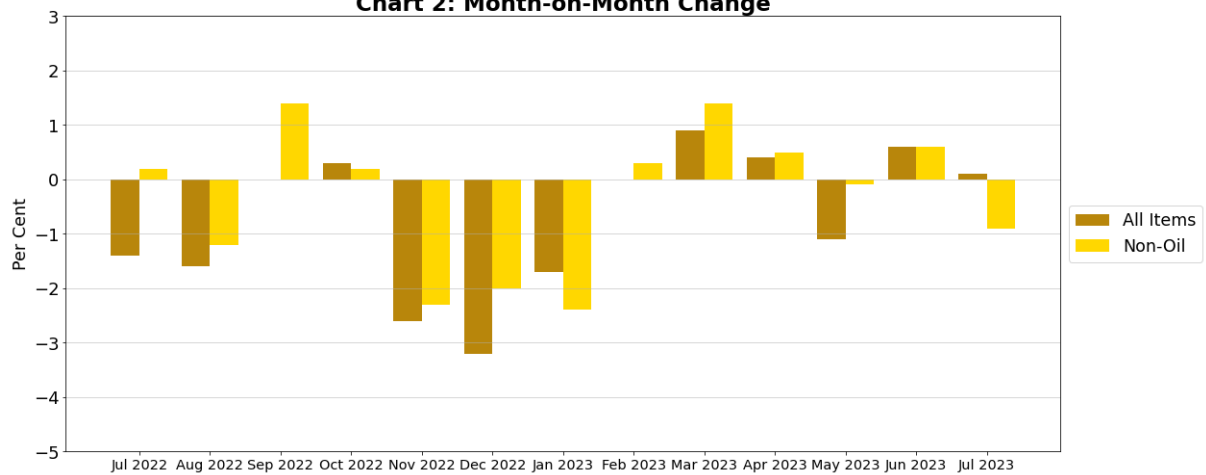
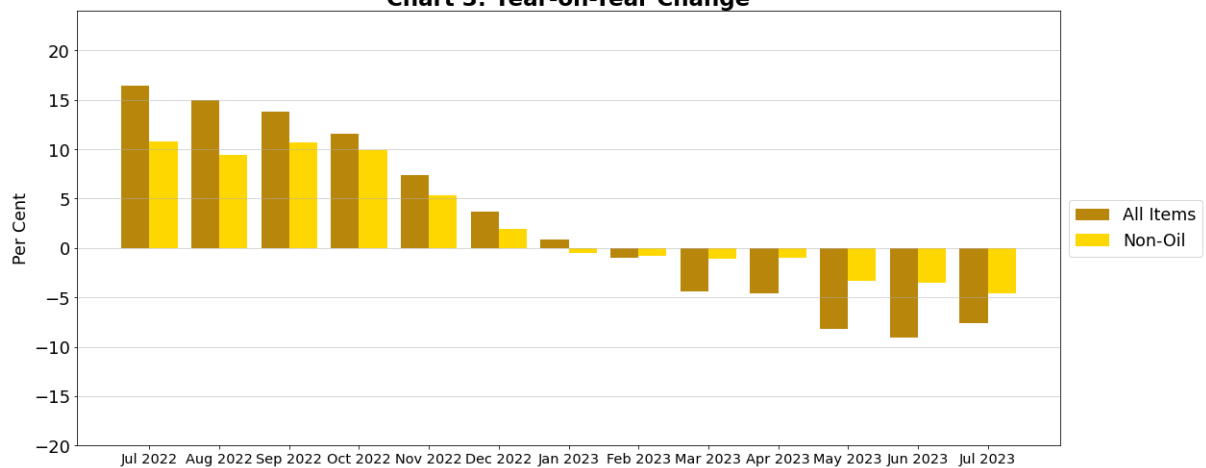


Chart 3: Year-on-Year Change



Domestic Supply Price Index (2018 = 100) July 2023

Chart 4: Index

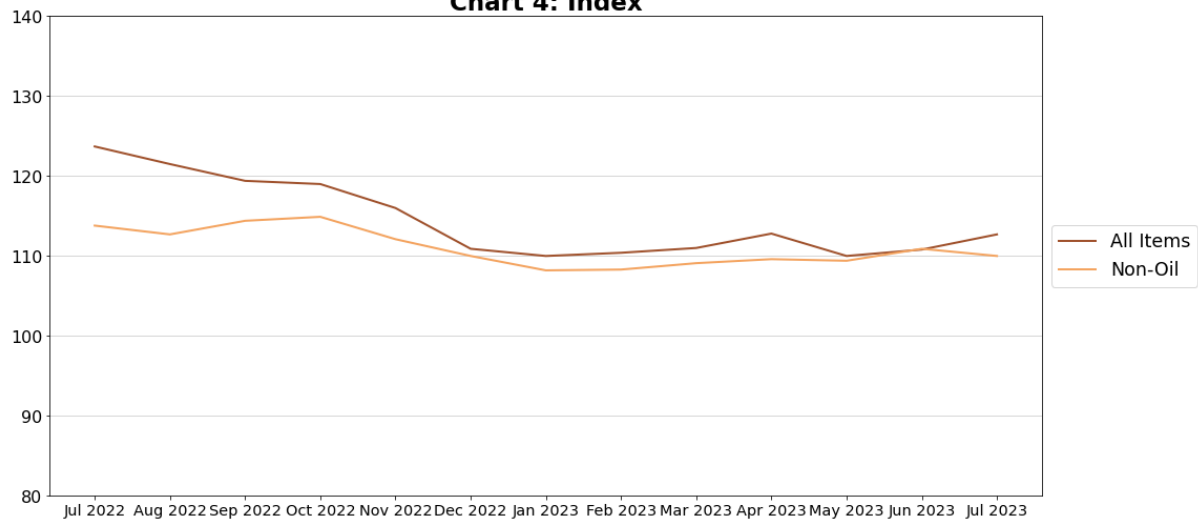


Chart 5: Month-on-Month Change

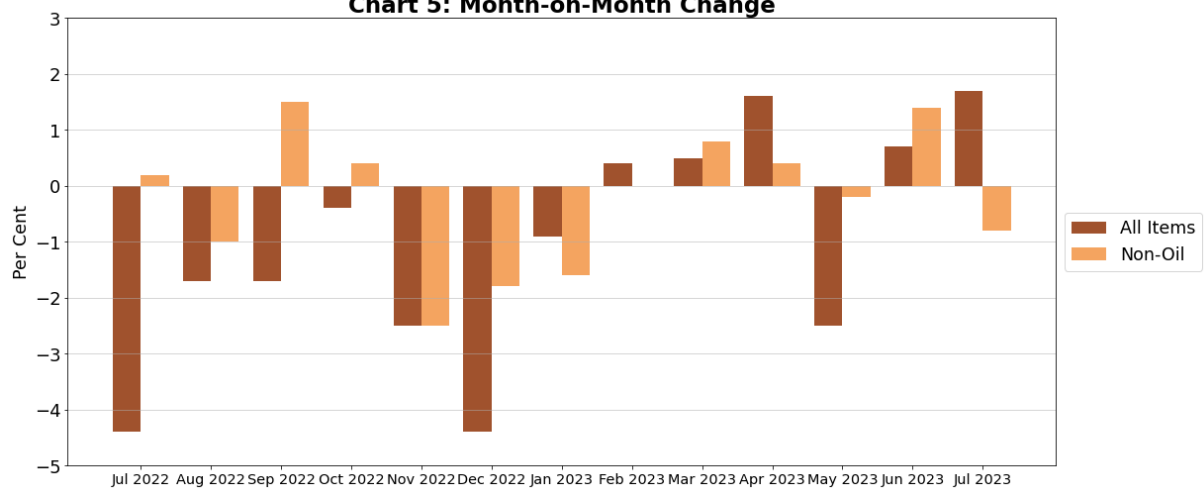


Chart 6: Year-on-Year Change

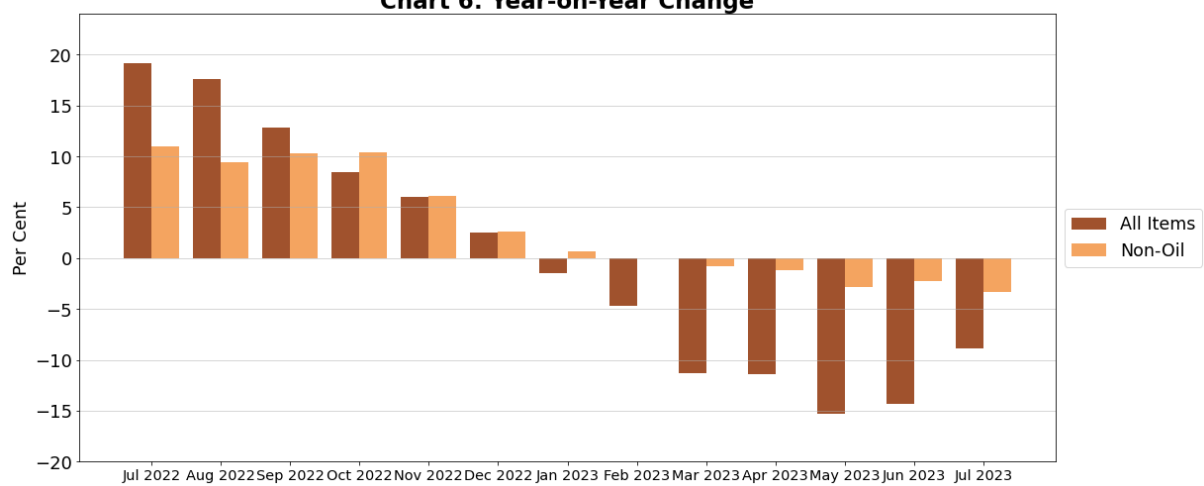


Table 1 Singapore Manufactured Products Price Index
July 2023

| Commodity section / division | Weights | Index (2018=100) | | | % Change | | |
|--|---------------|------------------|--------------|--------------|----------------------|----------------------|----------------------|
| | | May 2023 | Jun 2023 | Jul 2023 | Jun 2023 May 2023 | Jul 2023 Jun 2023 | Jul 2023 Jul 2022 |
| All Items | 10,000 | 107.1 | 107.8 | 108.0 | 0.6 | 0.1 | -7.6 |
| Non-oil Items | 8,586 | 107.3 | 107.9 | 106.9 | 0.6 | -0.9 | -4.6 |
| Food & Live Animals | 256 | 114.9 | 115.4 | 115.7 | 0.4 | 0.2 | 1.9 |
| Meat & meat preparations | 20 | 121.1 | 120.9 | 120.8 | -0.1 | -0.1 | 1.1 |
| Dairy products & birds' eggs | 15 | 158.1 | 158.8 | 158.3 | 0.5 | -0.3 | -8.6 |
| Fish seafood & preparations | 5 | 104.6 | 108.1 | 108.0 | 3.4 | -0.1 | 6.8 |
| Cereals & cereal preparations | 42 | 117.7 | 117.7 | 117.8 | - | 0.1 | 7.7 |
| Vegetables & fruit | 3 | 107.0 | 107.0 | 107.0 | - | - | 0.9 |
| Coffee, tea, cocoa, spices & manufactures | 28 | 108.4 | 110.8 | 111.6 | 2.2 | 0.7 | 2.2 |
| Animal feeding stuff (excl unmilled cereals) | 6 | 103.4 | 102.8 | 100.2 | -0.5 | -2.5 | -12.1 |
| Miscellaneous food preparations | 135 | 110.7 | 110.9 | 111.4 | 0.2 | 0.5 | 2.7 |
| Beverages & Tobacco | 31 | 112.8 | 112.8 | 112.8 | - | - | 3.9 |
| Beverages | 31 | 112.8 | 112.8 | 112.8 | - | - | 3.9 |
| Crude Materials (excl fuels) | 56 | 123.6 | 126.6 | 117.9 | 2.5 | -6.9 | -12.5 |
| Crude rubber | 50 | 125.3 | 128.8 | 118.9 | 2.8 | -7.6 | -13.7 |
| Cork & wood | 1 | 124.6 | 124.6 | 124.6 | - | - | -0.9 |
| Crude fertilizers & minerals | 2 | 94.8 | 94.8 | 94.8 | - | - | -0.1 |
| Metalliferous ores & metal scrap | 4 | 113.0 | 111.7 | 111.8 | -1.1 | 0.1 | 0.7 |
| Mineral Fuels, Lubricants & Related Materials | 1,414 | 106.3 | 107.3 | 114.3 | 0.9 | 6.6 | -22.0 |
| Petroleum & products & related materials | 1,386 | 106.4 | 107.8 | 115.1 | 1.3 | 6.8 | -21.6 |
| Gas | 28 | 101.4 | 81.8 | 74.1 | -19.3 | -9.5 | -41.4 |
| Animal & Vegetable Oils, Fats & Waxes | 14 | 133.6 | 133.4 | 128.6 | -0.2 | -3.6 | -36.6 |
| Fixed vegetable fats & oils | 14 | 133.6 | 133.4 | 128.6 | -0.2 | -3.6 | -36.6 |
| Chemicals & Chemical Products | 2,165 | 97.2 | 91.6 | 90.7 | -5.8 | -1.0 | -12.7 |
| Organic chemicals | 1,012 | 91.9 | 80.1 | 79.5 | -12.8 | -0.8 | -22.2 |
| Inorganic chemicals | 40 | 103.0 | 100.2 | 100.2 | -2.7 | - | -1.3 |
| Dyeing, tanning & colouring materials | 22 | 108.7 | 109.4 | 110.0 | 0.7 | 0.6 | -10.5 |
| Medicinal & pharmaceutical products | 232 | 88.5 | 88.3 | 86.7 | -0.2 | -1.9 | 2.2 |
| Essential oils & perfume; toilet cleaning products | 133 | 122.0 | 125.4 | 122.5 | 2.8 | -2.4 | -5.3 |
| Plastics in primary forms | 372 | 96.3 | 96.1 | 95.1 | -0.2 | -1.1 | -11.5 |
| Plastics in non-primary forms | 34 | 109.2 | 109.2 | 108.7 | - | -0.5 | -2.5 |
| Chemical materials & products nes | 320 | 108.3 | 106.6 | 106.1 | -1.6 | -0.4 | -0.3 |
| Manufactured Goods | 284 | 118.7 | 118.6 | 117.8 | -0.1 | -0.7 | -3.7 |
| Rubber manufactures nes | 23 | 105.2 | 106.3 | 106.1 | 1.0 | -0.2 | 1.5 |
| Wood & cork manufactures (excl furniture) | 8 | 110.7 | 110.8 | 110.8 | 0.1 | - | 7.0 |
| Paper manufactures | 34 | 102.9 | 106.0 | 105.6 | 3.0 | -0.5 | 4.8 |
| Non-metal mineral manufactures nes | 45 | 108.8 | 107.2 | 106.2 | -1.5 | -1.0 | -9.5 |
| Iron & steel | 53 | 138.1 | 138.3 | 135.9 | 0.1 | -1.7 | -5.4 |
| Non-ferrous metals | 20 | 96.4 | 95.0 | 94.7 | -1.5 | -0.3 | -3.6 |
| Manufactures of metals nes | 99 | 126.7 | 126.0 | 125.7 | -0.5 | -0.3 | -4.4 |
| Machinery & Transport Equipment | 4,897 | 111.3 | 114.8 | 113.7 | 3.1 | -1.0 | -2.1 |
| Power-generating machinery & equipment | 8 | 100.9 | 101.1 | 101.0 | 0.2 | -0.1 | 17.6 |
| Machinery specialized for particular industries | 571 | 115.2 | 114.3 | 113.2 | -0.8 | -1.0 | 2.0 |
| Metal working machinery | 18 | 108.3 | 109.8 | 109.8 | 1.4 | -0.1 | 1.7 |
| General industrial machinery | 85 | 106.1 | 107.0 | 106.2 | 0.8 | -0.7 | 1.6 |
| Office machines & data-processing machines | 880 | 113.5 | 113.9 | 113.0 | 0.3 | -0.8 | -3.8 |
| Telecommunication apparatus | 45 | 109.8 | 113.4 | 105.5 | 3.3 | -7.0 | 4.3 |
| Electrical machinery apparatus nes, electrical parts | 3,271 | 110.3 | 115.4 | 114.3 | 4.6 | -0.9 | -2.6 |
| Road vehicles | 20 | 105.4 | 111.6 | 105.2 | 5.9 | -5.7 | 2.6 |
| Miscellaneous Manufactured Articles | 883 | 101.6 | 102.2 | 101.9 | 0.6 | -0.3 | -0.9 |
| Furniture, bedding, mattresses, cushions & others | 16 | 108.0 | 105.4 | 105.4 | -2.5 | - | 2.8 |
| Travel goods, handbags & similar containers | 1 | 98.6 | 104.1 | 104.1 | 5.6 | - | 10.8 |
| Professional scientific & controlling instruments | 516 | 102.1 | 103.1 | 102.5 | 1.0 | -0.6 | -1.8 |
| Photographic & optical goods nes; watches & clocks | 48 | 97.0 | 97.2 | 96.8 | 0.2 | -0.4 | -1.5 |
| Miscellaneous manufactured articles nes | 303 | 101.1 | 101.3 | 101.5 | 0.2 | 0.2 | 0.6 |

Figures may not sum to total due to rounding.

Table 2 Domestic Supply Price Index
July 2023

| Commodity section / division | Weights | Index (2018=100) | | | % Change | | |
|--|---------------|------------------|--------------|--------------|----------------------|----------------------|----------------------|
| | | May 2023 | Jun 2023 | Jul 2023 | Jun 2023 May 2023 | Jul 2023 Jun 2023 | Jul 2023 Jul 2022 |
| All Items | 10,000 | 110.0 | 110.8 | 112.7 | 0.7 | 1.7 | -8.9 |
| Non-oil Items | 7,212 | 109.4 | 110.9 | 110.0 | 1.4 | -0.8 | -3.3 |
| Food & Live Animals | 319 | 115.9 | 116.6 | 116.4 | 0.6 | -0.2 | 0.2 |
| Live animals | 10 | 133.5 | 131.5 | 130.1 | -1.5 | -1.1 | -1.1 |
| Meat & meat preparations | 56 | 115.0 | 114.9 | 113.4 | -0.1 | -1.3 | -5.4 |
| Dairy products & birds' eggs | 43 | 133.2 | 133.5 | 133.4 | 0.2 | -0.1 | -4.2 |
| Fish seafood & preparations | 42 | 110.0 | 108.5 | 107.6 | -1.4 | -0.8 | 0.6 |
| Cereals & cereal preparations | 51 | 113.9 | 113.8 | 114.0 | - | 0.1 | 5.2 |
| Vegetables & fruit | 40 | 113.9 | 117.3 | 117.8 | 3.0 | 0.5 | -0.2 |
| Sugar, sugar preparations & honey | 13 | 135.0 | 140.9 | 144.7 | 4.4 | 2.7 | 10.9 |
| Coffee, tea, cocoa, spices & manufactures | 27 | 106.5 | 109.6 | 109.1 | 2.9 | -0.5 | 4.4 |
| Animal feeding stuff (excl unmilled cereals) | 3 | 122.1 | 123.1 | 122.4 | 0.8 | -0.5 | 3.6 |
| Miscellaneous food preparations | 35 | 103.1 | 103.1 | 103.4 | - | 0.3 | 2.6 |
| Beverages & Tobacco | 30 | 119.1 | 119.7 | 119.6 | 0.5 | -0.1 | 3.4 |
| Beverages | 28 | 118.2 | 118.2 | 118.1 | - | - | 1.6 |
| Tobacco & manufactures | 2 | 130.6 | 137.6 | 137.1 | 5.4 | -0.3 | 25.8 |
| Crude Materials (excl fuels) | 85 | 120.1 | 121.3 | 117.9 | 1.0 | -2.9 | -3.2 |
| Oil seeds & oleaginous fruits | 3 | 134.5 | 137.8 | 137.4 | 2.4 | -0.3 | 2.2 |
| Crude rubber | 31 | 122.3 | 125.5 | 116.6 | 2.6 | -7.1 | -12.9 |
| Cork & wood | 3 | 120.3 | 116.2 | 112.1 | -3.4 | -3.5 | -11.4 |
| Crude fertilizers & minerals | 34 | 116.9 | 117.7 | 117.5 | 0.6 | -0.1 | 6.9 |
| Metalliferous ores & metal scrap | 5 | 136.4 | 134.4 | 133.7 | -1.5 | -0.5 | -2.8 |
| Crude animal & vegetable materials nes | 10 | 112.3 | 111.7 | 111.7 | -0.6 | - | -0.7 |
| Mineral Fuels, Lubricants & Related Materials | 2,788 | 111.6 | 110.5 | 119.7 | -1.0 | 8.4 | -19.7 |
| Petroleum & products & related materials | 2,669 | 112.1 | 111.4 | 121.3 | -0.7 | 8.9 | -19.1 |
| Gas | 119 | 98.7 | 90.5 | 85.1 | -8.3 | -6.0 | -37.0 |
| Animal & Vegetable Oils, Fats & Waxes | 42 | 142.1 | 136.5 | 136.5 | -3.9 | - | -25.2 |
| Fixed vegetable fats & oils | 42 | 142.1 | 136.5 | 136.5 | -3.9 | - | -25.2 |
| Chemicals & Chemical Products | 1,142 | 99.8 | 96.9 | 96.6 | -2.9 | -0.3 | -9.0 |
| Organic chemicals | 459 | 89.4 | 82.7 | 83.1 | -7.5 | 0.5 | -17.9 |
| Inorganic chemicals | 54 | 106.7 | 104.3 | 104.6 | -2.3 | 0.3 | 2.4 |
| Dyeing, tanning & colouring materials | 20 | 113.2 | 112.9 | 112.6 | -0.3 | -0.2 | -4.6 |
| Medicinal & pharmaceutical products | 95 | 106.0 | 105.3 | 103.5 | -0.7 | -1.7 | 0.1 |
| Essential oils & perfume; toilet cleaning products | 62 | 123.4 | 127.1 | 122.0 | 3.0 | -4.0 | -9.6 |
| Plastics in primary forms | 158 | 101.4 | 101.5 | 100.8 | 0.1 | -0.7 | -7.9 |
| Plastics in non-primary forms | 32 | 108.7 | 108.2 | 107.8 | -0.5 | -0.4 | -3.4 |
| Chemical materials & products nes | 263 | 105.7 | 104.7 | 105.1 | -0.9 | 0.3 | -1.1 |
| Manufactured Goods | 490 | 116.6 | 116.2 | 115.1 | -0.3 | -1.0 | -5.5 |
| Rubber manufactures nes | 15 | 107.2 | 106.3 | 105.2 | -0.8 | -1.0 | 7.1 |
| Wood & cork manufactures (excl furniture) | 6 | 110.9 | 111.0 | 111.0 | 0.1 | - | 7.2 |
| Paper manufactures | 53 | 105.3 | 106.7 | 105.0 | 1.3 | -1.6 | -1.1 |
| Textile manufactures | 15 | 100.5 | 100.7 | 100.2 | 0.2 | -0.5 | -5.2 |
| Non-metal mineral manufactures nes | 123 | 111.7 | 110.8 | 110.1 | -0.8 | -0.6 | -5.5 |
| Iron & steel | 110 | 121.9 | 121.8 | 120.3 | -0.1 | -1.2 | -10.0 |
| Non-ferrous metals | 80 | 133.5 | 131.9 | 129.9 | -1.2 | -1.5 | -6.2 |
| Manufactures of metals nes | 86 | 113.0 | 112.9 | 112.4 | -0.1 | -0.4 | -3.4 |
| Machinery & Transport Equipment | 4,302 | 109.7 | 113.1 | 111.9 | 3.0 | -1.0 | -2.4 |
| Power-generating machinery & equipment | 205 | 123.0 | 123.6 | 122.6 | 0.5 | -0.8 | -2.8 |
| Machinery specialized for particular industries | 189 | 102.7 | 102.5 | 101.2 | -0.2 | -1.3 | -2.4 |
| Metal working machinery | 6 | 113.6 | 113.6 | 113.5 | 0.1 | -0.1 | 5.9 |
| General industrial machinery | 90 | 101.1 | 102.0 | 101.2 | 0.9 | -0.7 | -1.7 |
| Office machines & data-processing machines | 192 | 99.3 | 99.4 | 98.8 | 0.2 | -0.6 | -3.3 |
| Telecommunications apparatus | 53 | 81.7 | 81.9 | 80.8 | 0.2 | -1.4 | -6.3 |
| Electrical machinery apparatus nes, electrical parts | 3,456 | 111.0 | 115.0 | 113.8 | 3.6 | -1.0 | -2.3 |
| Road vehicles | 111 | 97.2 | 98.5 | 97.1 | 1.3 | -1.4 | -4.4 |
| Miscellaneous Manufactured Articles | 802 | 110.8 | 111.0 | 110.3 | 0.2 | -0.7 | 0.6 |
| Prefab building, sanitary plumbing, lighting nes | 7 | 106.4 | 106.3 | 107.4 | -0.2 | 1.1 | 0.3 |
| Furniture, bedding, mattresses, cushions & others | 23 | 119.6 | 119.5 | 118.3 | -0.1 | -1.0 | 9.0 |
| Travel goods, handbags & similar containers | 39 | 155.0 | 155.0 | 149.7 | - | -3.4 | 22.9 |
| Articles of apparel & clothing accessories | 25 | 101.5 | 101.3 | 100.7 | -0.3 | -0.6 | -4.6 |
| Footwear | 14 | 102.3 | 101.8 | 101.4 | -0.5 | -0.4 | -2.7 |
| Professional scientific & controlling instruments | 409 | 102.7 | 103.5 | 102.9 | 0.8 | -0.6 | -2.7 |
| Photographic & optical goods nes; watches & clocks | 75 | 111.2 | 111.0 | 111.9 | -0.2 | 0.8 | 3.8 |
| Miscellaneous manufactured articles nes | 211 | 118.9 | 118.4 | 117.7 | -0.4 | -0.6 | 1.0 |

Figures may not sum to total due to rounding.

Table 3 Singapore Manufactured Products Price Index

| Section | All Items | Non-oil Items | Food & Live Animals | Beverages & Tobacco | Crude Materials | Mineral Fuels | Animal & Vegetable Oils, Fats & Waxes | Chemicals & Chemical Products | Manufactured Goods | Machinery & Transport Equipment | Misc Manufactured Articles |
|---|-----------|---------------|---------------------|---------------------|-----------------|---------------|---------------------------------------|-------------------------------|--------------------|---------------------------------|----------------------------|
| Weights | 10,000 | 8,586 | 256 | 31 | 56 | 1,414 | 14 | 2,165 | 284 | 4,897 | 883 |
| Index (2018=100) | | | | | | | | | | | |
| 2018 | 100.0 | 100.0 | 100.0 | 100.0 | 100.0 | 100.0 | 100.0 | 100.0 | 100.0 | 100.0 | 100.0 |
| 2019 | 96.7 | 97.6 | 99.8 | 103.5 | 94.5 | 91.3 | 88.5 | 95.3 | 102.2 | 97.8 | 100.2 |
| 2020 | 90.0 | 95.4 | 101.3 | 103.6 | 89.2 | 57.3 | 95.8 | 87.3 | 105.7 | 97.1 | 100.6 |
| 2021 | 98.6 | 99.8 | 102.6 | 103.6 | 103.3 | 91.0 | 133.3 | 94.4 | 112.4 | 101.3 | 99.2 |
| 2022 | 113.3 | 109.6 | 111.3 | 107.9 | 123.5 | 135.2 | 167.7 | 101.6 | 120.4 | 113.5 | 102.2 |
| Jul 2022 | 116.9 | 112.0 | 113.5 | 108.6 | 134.7 | 146.5 | 202.8 | 103.9 | 122.4 | 116.1 | 102.8 |
| Aug 2022 | 115.1 | 110.7 | 113.1 | 108.6 | 132.3 | 141.7 | 180.0 | 101.1 | 121.6 | 115.2 | 102.5 |
| Sep 2022 | 115.0 | 112.3 | 113.9 | 108.6 | 139.9 | 131.8 | 182.2 | 101.9 | 121.6 | 117.3 | 103.4 |
| Oct 2022 | 115.3 | 112.4 | 116.1 | 108.6 | 132.3 | 132.8 | 156.8 | 101.2 | 120.7 | 117.9 | 104.3 |
| Nov 2022 | 112.4 | 109.8 | 116.2 | 108.7 | 134.3 | 127.9 | 144.3 | 98.7 | 119.9 | 114.6 | 103.2 |
| Dec 2022 | 108.8 | 107.6 | 115.3 | 108.6 | 130.9 | 115.7 | 137.6 | 96.4 | 118.9 | 112.3 | 101.5 |
| Jan 2023 | 106.9 | 105.0 | 115.0 | 113.1 | 121.8 | 118.4 | 136.8 | 92.9 | 118.4 | 109.6 | 100.4 |
| Feb 2023 | 107.0 | 105.3 | 115.3 | 112.7 | 123.0 | 116.9 | 134.5 | 94.6 | 118.1 | 109.3 | 100.8 |
| Mar 2023 | 107.9 | 106.8 | 115.7 | 112.8 | 123.0 | 114.5 | 134.8 | 98.3 | 119.1 | 110.1 | 101.3 |
| Apr 2023 | 108.3 | 107.4 | 114.9 | 112.8 | 122.2 | 114.0 | 134.0 | 98.1 | 119.1 | 111.3 | 100.9 |
| May 2023 | 107.1 | 107.3 | 114.9 | 112.8 | 123.6 | 106.3 | 133.6 | 97.2 | 118.7 | 111.3 | 101.6 |
| Jun 2023 | 107.8 | 107.9 | 115.4 | 112.8 | 126.6 | 107.3 | 133.4 | 91.6 | 118.6 | 114.8 | 102.2 |
| Jul 2023 | 108.0 | 106.9 | 115.7 | 112.8 | 117.9 | 114.3 | 128.6 | 90.7 | 117.8 | 113.7 | 101.9 |
| Percentage Change over same period of previous year (%) | | | | | | | | | | | |
| 2019 | -3.3 | -2.4 | -0.2 | 3.5 | -5.5 | -8.7 | -11.5 | -4.7 | 2.2 | -2.2 | 0.2 |
| 2020 | -6.9 | -2.2 | 1.5 | 0.1 | -5.6 | -37.2 | 8.2 | -8.3 | 3.5 | -0.7 | 0.4 |
| 2021 | 9.5 | 4.6 | 1.3 | - | 15.8 | 58.7 | 39.2 | 8.1 | 6.4 | 4.3 | -1.4 |
| 2022 | 14.9 | 9.9 | 8.4 | 4.1 | 19.5 | 48.5 | 25.8 | 7.7 | 7.1 | 12.1 | 3.0 |
| Jul 2022 | 16.4 | 10.8 | 10.4 | 4.8 | 28.1 | 52.1 | 41.6 | 9.8 | 7.9 | 12.4 | 3.2 |
| Aug 2022 | 15.0 | 9.4 | 9.9 | 4.8 | 26.4 | 52.0 | 24.7 | 5.5 | 6.2 | 12.1 | 3.2 |
| Sep 2022 | 13.8 | 10.7 | 10.8 | 4.8 | 33.2 | 33.4 | 29.3 | 7.5 | 5.0 | 13.1 | 4.3 |
| Oct 2022 | 11.6 | 9.9 | 12.6 | 4.8 | 18.8 | 21.1 | 5.7 | 4.7 | 3.6 | 13.1 | 5.0 |
| Nov 2022 | 7.4 | 5.3 | 12.5 | 4.9 | 20.0 | 20.1 | -3.9 | -0.6 | 2.4 | 7.8 | 3.2 |
| Dec 2022 | 3.7 | 1.9 | 11.2 | 4.8 | 17.0 | 15.1 | -8.8 | -2.6 | 1.2 | 3.2 | 1.1 |
| Jan 2023 | 0.9 | -0.5 | 9.3 | 6.9 | 10.7 | 8.8 | -9.9 | -4.6 | 0.8 | 0.3 | 0.1 |
| Feb 2023 | -1.0 | -0.8 | 9.4 | 6.6 | 11.4 | -1.8 | -17.8 | -5.1 | - | - | 0.4 |
| Mar 2023 | -4.4 | -1.1 | 9.0 | 6.6 | 10.9 | -19.4 | -17.7 | -5.3 | -1.2 | -0.1 | -0.3 |
| Apr 2023 | -4.6 | -1.0 | 6.8 | 3.9 | 9.2 | -21.0 | -21.4 | -5.9 | -1.3 | 0.6 | -1.1 |
| May 2023 | -8.2 | -3.3 | 4.2 | 3.9 | 4.7 | -29.9 | -24.4 | -8.6 | -2.0 | -2.0 | -0.6 |
| Jun 2023 | -9.1 | -3.5 | 3.1 | 3.9 | 9.3 | -32.9 | -26.7 | -12.7 | -2.3 | -0.8 | - |
| Jul 2023 | -7.6 | -4.6 | 1.9 | 3.9 | -12.5 | -22.0 | -36.6 | -12.7 | -3.7 | -2.1 | -0.9 |

Table 4 Domestic Supply Price Index

| Section | All Items | Non-oil Items | Food & Live Animals | Beverages & Tobacco | Crude Materials | Mineral Fuels | Animal & Vegetable Oils, Fats & Waxes | Chemicals & Chemical Products | Manu- factured Goods | Machinery & Transport Equipment | Misc Manu- factured Articles |
|--|---------------|---------------|---------------------|---------------------|-----------------|---------------|---------------------------------------|-------------------------------|----------------------|---------------------------------|------------------------------|
| Weights | 10,000 | 7,212 | 319 | 30 | 85 | 2,788 | 42 | 1,142 | 490 | 4,302 | 802 |
| Index (2018=100) | | | | | | | | | | | |
| 2018 | 100.0 | 100.0 | 100.0 | 100.0 | 100.0 | 100.0 | 100.0 | 100.0 | 100.0 | 100.0 | 100.0 |
| 2019 | 96.7 | 98.2 | 101.3 | 102.1 | 98.4 | 93.0 | 90.9 | 94.1 | 101.5 | 98.2 | 101.0 |
| 2020 | 88.4 | 97.6 | 103.6 | 104.1 | 97.2 | 64.4 | 103.6 | 87.7 | 102.2 | 98.0 | 104.0 |
| 2021 | 101.8 | 101.6 | 105.8 | 104.6 | 105.2 | 102.5 | 150.0 | 96.0 | 111.7 | 100.4 | 104.9 |
| 2022 | 120.8 | 111.7 | 114.5 | 114.6 | 117.4 | 144.3 | 176.7 | 104.8 | 120.1 | 112.1 | 109.1 |
| Jul 2022 | 123.7 | 113.8 | 116.1 | 115.7 | 121.8 | 149.2 | 182.6 | 106.2 | 121.8 | 114.7 | 109.6 |
| Aug 2022 | 121.5 | 112.7 | 116.4 | 116.1 | 120.3 | 144.2 | 174.5 | 104.4 | 120.2 | 113.6 | 109.4 |
| Sep 2022 | 119.4 | 114.4 | 117.2 | 117.1 | 125.5 | 132.5 | 168.2 | 105.6 | 120.3 | 115.9 | 110.2 |
| Oct 2022 | 119.0 | 114.9 | 118.0 | 118.2 | 122.9 | 129.7 | 163.7 | 104.6 | 120.3 | 116.9 | 110.5 |
| Nov 2022 | 116.0 | 112.1 | 117.0 | 117.6 | 123.2 | 126.3 | 158.8 | 102.1 | 118.7 | 113.4 | 109.1 |
| Dec 2022 | 110.9 | 110.0 | 116.4 | 116.8 | 121.3 | 113.2 | 153.5 | 100.3 | 117.4 | 111.1 | 107.7 |
| Jan 2023 | 110.0 | 108.2 | 116.6 | 117.9 | 117.5 | 114.5 | 149.9 | 99.3 | 116.5 | 108.5 | 107.4 |
| Feb 2023 | 110.4 | 108.3 | 116.0 | 117.8 | 118.4 | 115.9 | 148.1 | 100.4 | 116.4 | 108.3 | 107.9 |
| Mar 2023 | 111.0 | 109.1 | 116.0 | 117.8 | 118.4 | 115.8 | 148.5 | 101.3 | 116.6 | 109.1 | 109.3 |
| Apr 2023 | 112.8 | 109.6 | 115.7 | 117.8 | 117.6 | 121.1 | 147.4 | 101.4 | 116.6 | 109.9 | 109.6 |
| May 2023 | 110.0 | 109.4 | 115.9 | 119.1 | 120.1 | 111.6 | 142.1 | 99.8 | 116.6 | 109.7 | 110.8 |
| Jun 2023 | 110.8 | 110.9 | 116.6 | 119.7 | 121.3 | 110.5 | 136.5 | 96.9 | 116.2 | 113.1 | 111.0 |
| Jul 2023 | 112.7 | 110.0 | 116.4 | 119.6 | 117.9 | 119.7 | 136.5 | 96.6 | 115.1 | 111.9 | 110.3 |
| Percentage Change over same period of previous year (%) | | | | | | | | | | | |
| 2019 | -3.3 | -1.8 | 1.3 | 2.1 | -1.6 | -7.0 | -9.1 | -5.9 | 1.5 | -1.8 | 1.0 |
| 2020 | -8.7 | -0.6 | 2.2 | 2.0 | -1.1 | -30.7 | 13.9 | -6.8 | 0.7 | -0.2 | 2.9 |
| 2021 | 15.2 | 4.0 | 2.1 | 0.5 | 8.1 | 59.2 | 44.9 | 9.5 | 9.3 | 2.4 | 0.9 |
| 2022 | 18.6 | 10.0 | 8.2 | 9.5 | 11.6 | 40.8 | 17.8 | 9.2 | 7.5 | 11.7 | 4.0 |
| Jul 2022 | 19.2 | 11.0 | 9.7 | 10.0 | 14.6 | 39.5 | 19.2 | 8.9 | 7.0 | 13.3 | 4.0 |
| Aug 2022 | 17.6 | 9.4 | 9.7 | 10.2 | 12.6 | 38.3 | 11.7 | 6.3 | 5.1 | 11.8 | 3.5 |
| Sep 2022 | 12.8 | 10.3 | 10.3 | 11.3 | 17.2 | 18.6 | 7.4 | 7.4 | 4.1 | 12.9 | 4.5 |
| Oct 2022 | 8.5 | 10.4 | 10.4 | 12.6 | 12.4 | 4.4 | -0.3 | 5.1 | 3.6 | 13.8 | 4.6 |
| Nov 2022 | 6.0 | 6.1 | 8.9 | 11.9 | 11.6 | 5.7 | -5.7 | 2.3 | 1.1 | 8.1 | 2.8 |
| Dec 2022 | 2.5 | 2.6 | 6.7 | 11.1 | 8.7 | 2.1 | -8.8 | 0.2 | -0.6 | 3.7 | 0.5 |
| Jan 2023 | -1.5 | 0.7 | 6.0 | 6.6 | 6.9 | -6.5 | -9.7 | -1.1 | -0.9 | 1.0 | 0.2 |
| Feb 2023 | -4.7 | - | 5.2 | 6.3 | 7.4 | -14.4 | -15.4 | -2.3 | -1.5 | 0.4 | 0.3 |
| Mar 2023 | -11.3 | -0.8 | 4.0 | 6.0 | 6.6 | -29.4 | -21.0 | -6.0 | -3.1 | 0.4 | - |
| Apr 2023 | -11.4 | -1.2 | 2.6 | 3.8 | 5.3 | -28.5 | -24.1 | -6.2 | -4.0 | 0.2 | -0.2 |
| May 2023 | -15.3 | -2.8 | 1.4 | 4.6 | 3.8 | -36.1 | -29.3 | -7.4 | -4.8 | -2.1 | 1.0 |
| Jun 2023 | -14.3 | -2.3 | 2.0 | 5.1 | 5.7 | -35.1 | -30.0 | -9.8 | -4.9 | -0.8 | 1.4 |
| Jul 2023 | -8.9 | -3.3 | 0.2 | 3.4 | -3.2 | -19.7 | -25.2 | -9.0 | -5.5 | -2.4 | 0.6 |

NOTATIONS

- nes not elsewhere specified
- nil or negligible

NOTES

The Singapore Manufactured Products and Domestic Supply Price Indices report contains statistics that are the most recent available at the time of its preparation.

Some statistics, particularly those for the most recent time periods, are provisional and may be subject to revision in later issues.

SINGAPORE DEPARTMENT OF STATISTICS COMMUNICATIONS & INFORMATION SERVICES

Singapore Department of Statistics (DOS) offers official statistics, data insights, visualisations and statistical resources through user-friendly platforms.



SingStat Website

Visit this convenient gateway to access latest data and statistical information.

Data across the six major themes of Economy & Prices, Industry, Trade & Investment, Population, Households and Society, covering some 200 topics such as Gross Domestic Product, Consumer Price Index, Retail Sales and Food & Beverage Services Indices, Producer Price Indices, Business Expectations, Business Receipts Index, Trade in Services, Direct Investment, Population Indicators, Household Income, Household Expenditure, Deaths and Life Expectancy, Births and Fertility, Marriages and Divorces, and more.

Publications

- Information Papers which highlight conceptual and methodological changes and improvements in official statistics.
- Occasional Papers which present statistical trends and observations on important social and economic issues to stimulate discussion and research.
- eBook of Statistics which consolidates latest information and resources on key economic and socio-demographic domains.
- Singapore in Figures which allows exploration of key economic and socio-demographic statistics through interactive dashboards.
- Statistics Singapore Newsletter which features articles on latest key statistical activities, recent survey findings and methodological improvements.

Visualisations such as infographics and interactive dashboards with latest data, and videos to explain data and statistical concepts.

Data for Businesses with data tools to empower data-driven business decisions, giving firms insights on their customers, industries and business performance.

Advance Release Calendar providing dates of upcoming data releases in the next six months.



SingStat Table Builder

Access for free over 2,200 data tables across various economic and socio-demographic domains from 70 public sector agencies. Watch the [video](#) to find out how you can easily access and customise data tables.



SingStat Mobile App

Download the app for fast and convenient access to commonly referenced statistics via your mobile devices. Over 260 charts are available across 38 data categories for easy visualisation of data trends.



SingStat Express

Subscribe to receive alerts on the latest press releases, occasional/information papers and newsletters.



For statistical enquiries, you may reach us at:

✉ email: info@singstat.gov.sg or submit the [Data Request Form](#)

☎ phone: 1800-323 8118* (Local users) or (65) 6332 7738 (Overseas users)

* Calls from mobile telephone lines to 1800 local toll-free number may be subject to mobile airtime charges as imposed by the relevant mobile service provider.

Find us on social media!



@SingStat



@singstat_dos



@SingStatvideo



@sg-department-of-statistics