



Singapore Manufactured Products & Domestic Supply Price Indices

July 2025

www.singstat.gov.sg

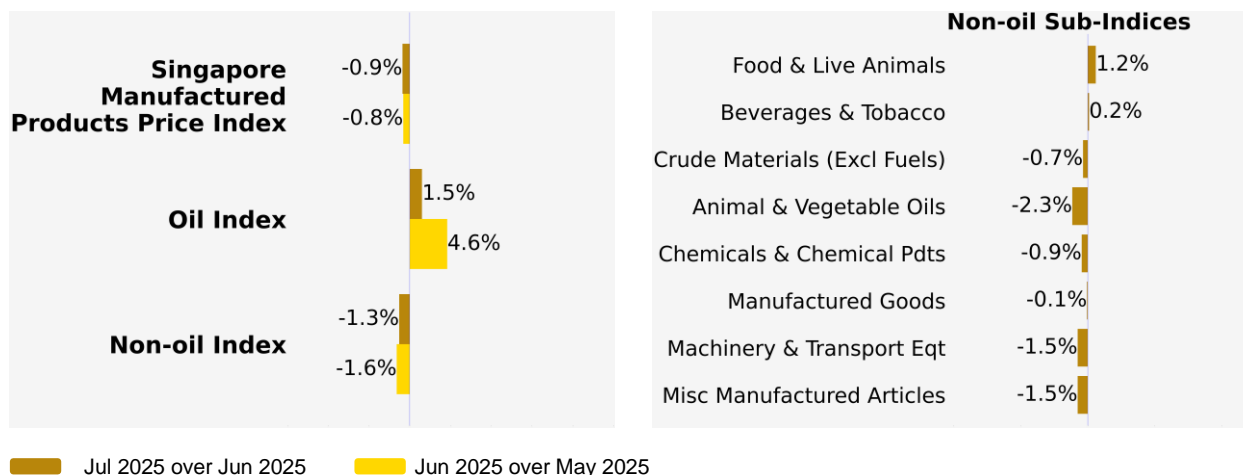
**SINGAPORE MANUFACTURED PRODUCTS &
DOMESTIC SUPPLY PRICE INDICES, July 2025
ISSN 2591-7447**

© Department of Statistics, Ministry of Trade & Industry, Republic of Singapore

Reproducing or quoting any part of this publication is permitted, provided this publication is accredited as the source. Please refer to the SingStat Website Terms of Use (<http://www.singstat.gov.sg/terms-of-use>) for more details on the conditions of use of this publication.

Singapore Manufactured Products Price Index (2023 = 100) July 2025

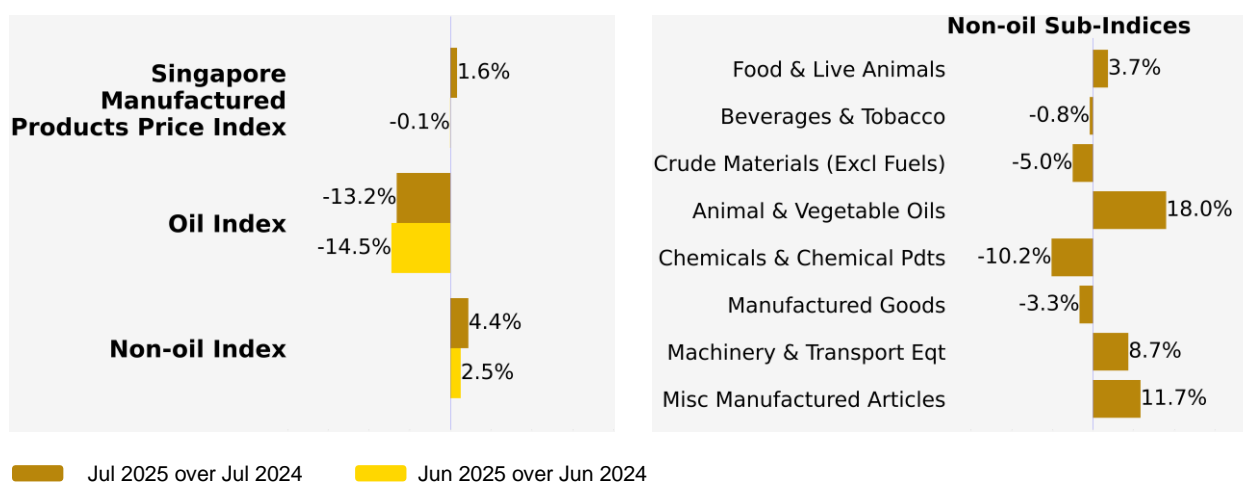
Month-on-Month Change



The Singapore Manufactured Products Price Index fell 0.9% in July 2025, following the 0.8% decrease in June 2025. The Oil index gained 1.5%, extending the 4.6% increase in the previous month. The Non-oil index fell 1.3% in July 2025, following the 1.6% decrease in June 2025.

The decrease in the Non-oil index was due to the Machinery & Transport Equipment index, led by lower prices of electrical machinery apparatus, as well as the Chemicals & Chemical Products, Miscellaneous Manufactured Articles, Crude Materials, Animal & Vegetable Oils and Manufactured Goods indices. The declines were partially offset by gains in the Food & Live Animals and Beverages & Tobacco indices.

Year-on-Year Change

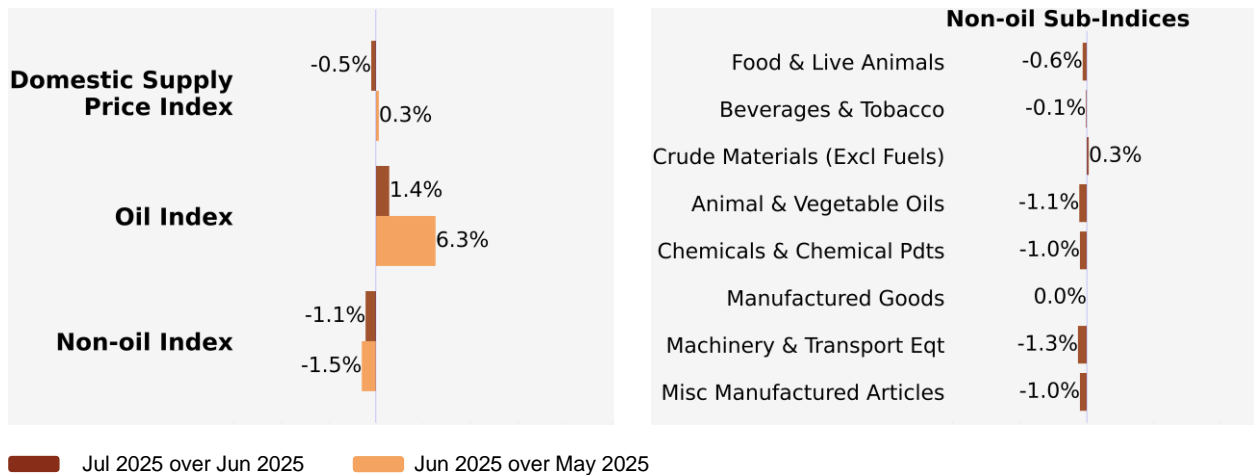


The Singapore Manufactured Products Price Index rose 1.6% in July 2025 from a year ago, against the 0.1% decrease in June 2025. The Oil index dipped 13.2%, while the Non-oil index went up 4.4%.

Among the Non-oil sub-indices, the increase was due to the Machinery & Transport Equipment index, resulting from higher prices of electrical machinery apparatus, as well as the Miscellaneous Manufactured Articles, Food & Live Animals and Animal & Vegetable Oils indices. The increases were partially moderated by declines in the Chemicals & Chemical Products, Manufactured Goods, Crude Materials and Beverages & Tobacco indices.

Domestic Supply Price Index (2023 = 100) July 2025

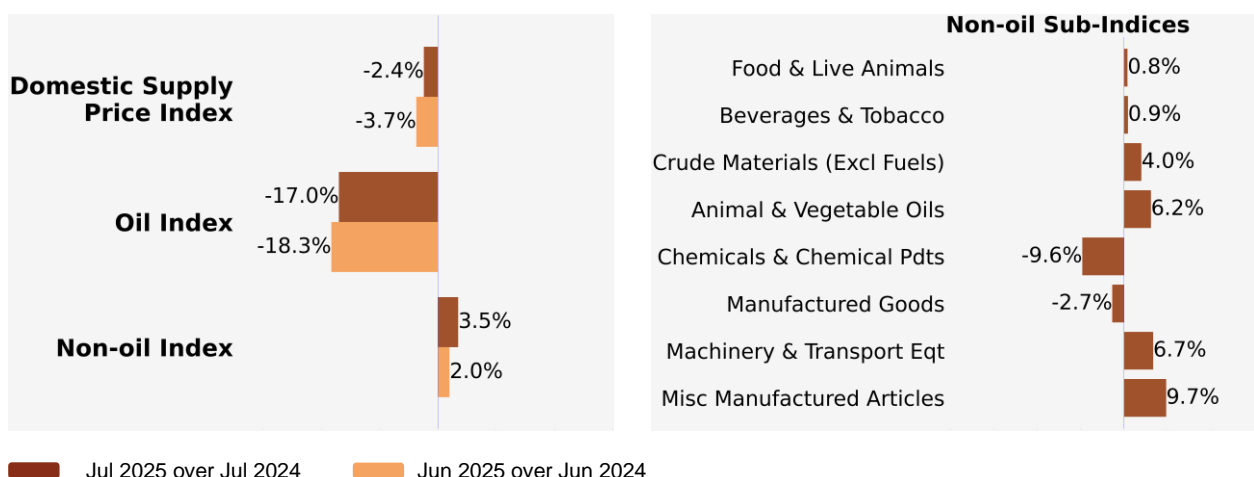
Month-on-Month Change



The Domestic Supply Price Index fell 0.5% in July 2025, after the 0.3% increase in June 2025. The Oil index gained 1.4%, extending the 6.3% increase in the previous month. The Non-oil index fell 1.1% in July 2025, following the 1.5% decrease in June 2025.

The decrease in the Non-oil index was mainly driven by the Machinery & Transport Equipment index, led by lower prices of electrical machinery apparatus, as well as the Chemicals & Chemical Products, Miscellaneous Manufactured Articles, Food & Live Animals, Animal & Vegetable Oils and Beverages & Tobacco indices. The decreases were partially offset by increases in the Crude Materials index.

Year-on-Year Change



The Domestic Supply Price Index fell 2.4% in July 2025 from a year ago, following the 3.7% decrease in June 2025. The Oil index dipped 17.0% while the Non-oil index rose 3.5%.

Among the Non-oil sub-indices, the increase was due to the Machinery & Transport Equipment index, attributed to higher prices of electrical machinery apparatus, as well as the Miscellaneous Manufactured Articles, Animal & Vegetable Oils, Crude Materials, Food & Live Animals and Beverages & Tobacco indices. The increases were partially moderated by declines in the Chemicals & Chemical Products and Manufactured Goods indices.

Technical Note

The **Singapore Manufactured Products Price Index (SMPPI)** monitors price changes of locally manufactured commodities. The weights of the index are derived from the distribution of local production by commodity in 2023. Ex-factory prices are obtained from principal manufacturers of the items concerned.

The **Domestic Supply Price Index (DSPI)** is designed to measure the changes in the price level of either goods manufactured locally or imported, which are retained for use in the domestic economy by the government, business or household sectors. For imported products, the prices refer to those paid by importers in bringing the goods into Singapore, commonly referred to as c.i.f. prices. In the case of Singapore manufactured products, the quotations used are ex-factory prices. The weight for each commodity item is proportional to the value of its total supply or availability in the domestic market in 2023.

Index Formula

The 2023-based series is compiled using the 'modified Laspeyres' formula where the weight reference period of 2022 preceded the price reference period of 2023. The geometric mean formula has been adopted in the computation of unweighted elementary aggregate price indices. The arithmetic mean formula is applied in compiling indices at higher levels of aggregation where weights of specific sub-indices are available.

Measurement of Changes in Price Indices

Change over previous month compares the index of the month with that of the preceding month. Such comparisons measure the change in the price index between two consecutive months. They serve as useful short-term indicators of the price movements.

Change over same period of previous year measures change in the index over a twelve-month period. Such comparisons compare the movement in the price index between similar months in two consecutive years.

Linking the Old 2018-Based Price Index Series to the New 2023-Based Price Index Series

The SMPPI and DSPI have been rebased from base year 2018 to base year 2023. To facilitate comparison of the historical price indices across base years, the old 2018-based series are linked to the new 2023-based series by re-scaling them via a Linked Coefficient. The Linked Coefficient is the ratio of the annual 2023-based index in 2023 to the annual 2018-based index in 2023.

Example: Linking the old Iron & Steel Index series for SMPPI prior to 2023, to the 2023-based Iron & Steel Index (2023=100)

1) Calculate the linked coefficient

Year	Iron & Steel Index (2018=100)	Iron & Steel Index (2023=100)	Linked Coefficient
2023	135.6	100.0	$100.0 \div 135.6 = \mathbf{0.737}$

2) Re-scaling the old series to the 2023-based series using the Linked Coefficient

Year	Month	Iron & Steel Index (2018=100)	Iron & Steel Index (2023=100)
2021	Dec	125.6	$125.6 \times \mathbf{0.737} = \mathbf{92.6}$
2022	Jan	127.2	$127.2 \times \mathbf{0.737} = \mathbf{93.7}$

Rescaling the 2023-Based Index Series to Previous Years

To continue the old 2018-based index series going forward in time, re-scale the new 2023-based index series to the old base year 2018 level, via a Rescaling Coefficient. The Rescaling Coefficient is the ratio of the annual 2023-based index in 2023 to the annual 2023-based index in 2018.

Example: Rescaling the new 2023-based Iron & Steel Index series for SMPPI to the 2018-based Iron & Steel Index (2018=100)

1) Calculate the rescaling coefficient

Year	Annual Iron & Steel Index in 2023	Annual Iron & Steel Index in 2018	Rescaling Coefficient
2023	100.0	73.7	$100.0 \div 73.7 = 1.357$

2) Re-scaling the new series to the 2018-based series using the Rescaling Coefficient

Year	Month	Iron & Steel Index (2023=100)	Iron & Steel Index (2018=100)
2024	Jan	100.0	$100.0 \times 1.357 = 135.7$
2024	Feb	100.6	$100.6 \times 1.357 = 136.5$

Index Revision

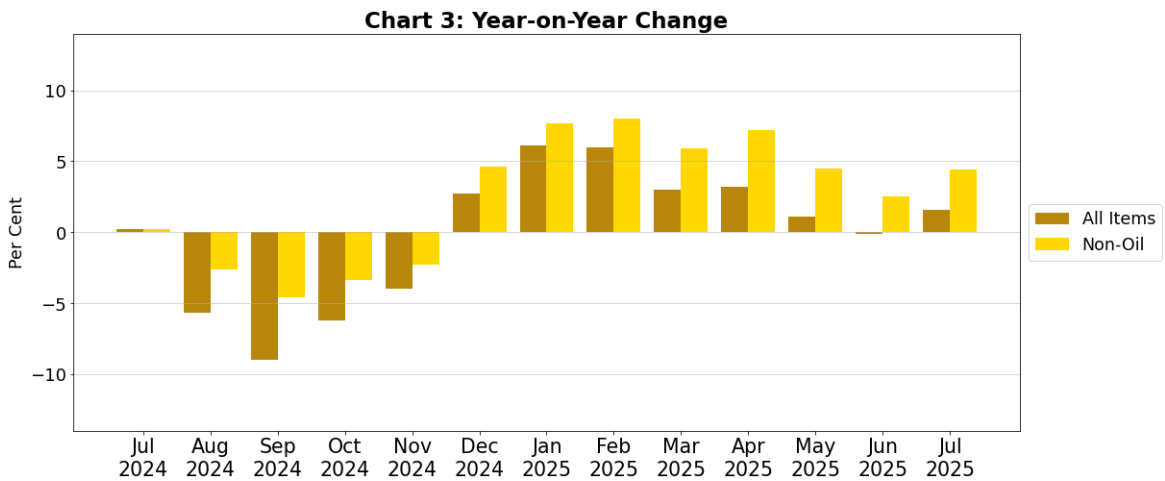
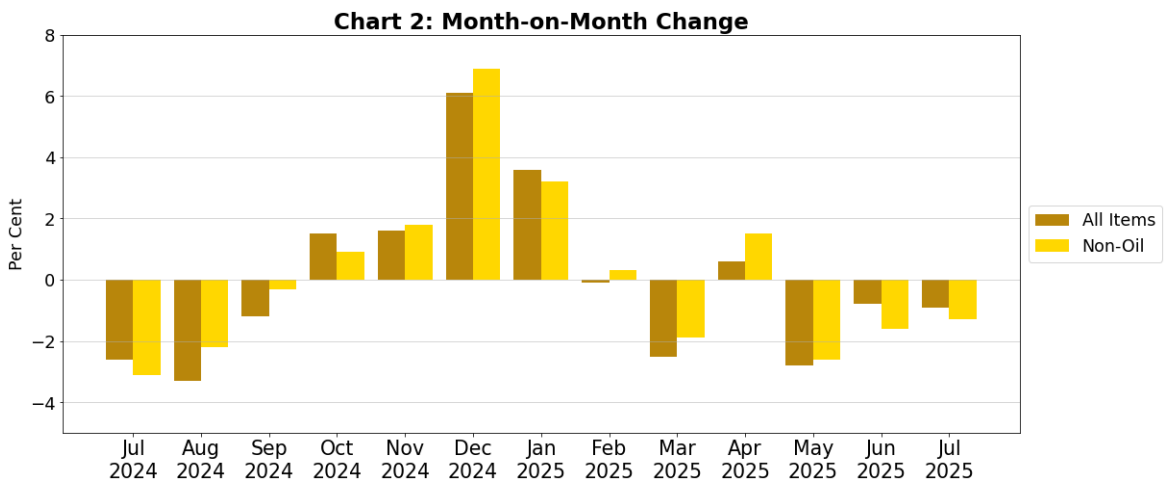
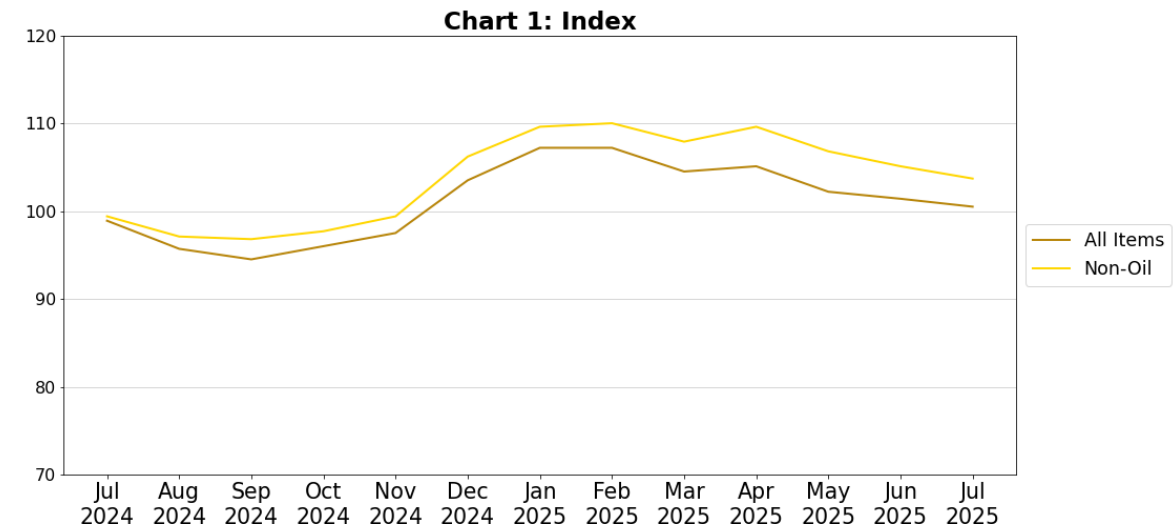
The indices may be revised when late returns and amendments received from respondents are incorporated.

Dissemination of Data

The Singapore Manufactured Products and Domestic Supply Price Indices are available on the SingStat Website (www.singstat.gov.sg/tablebuilder).

Singapore Manufactured Products Price Index (2023 = 100)

July 2025



Domestic Supply Price Index (2023 = 100)

July 2025

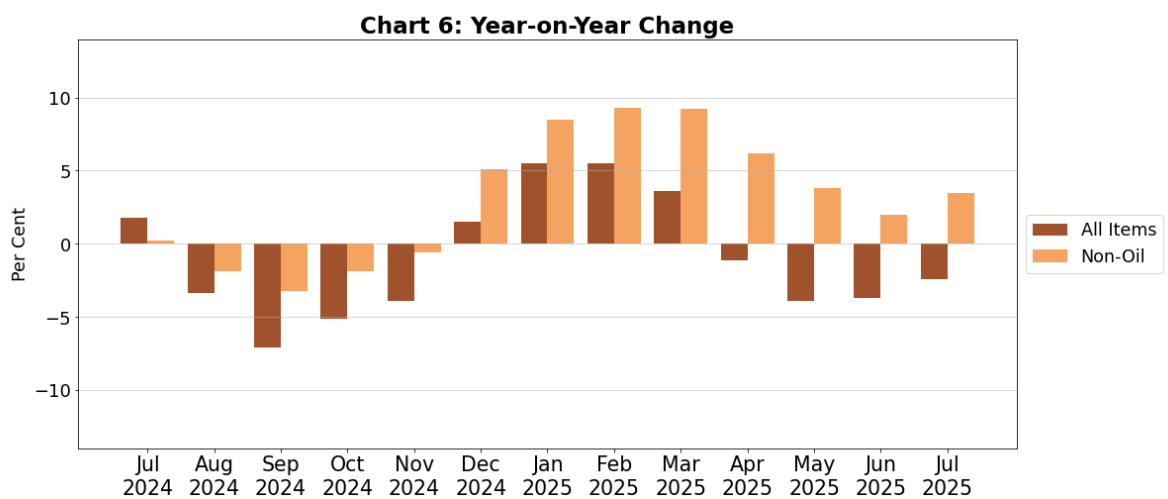
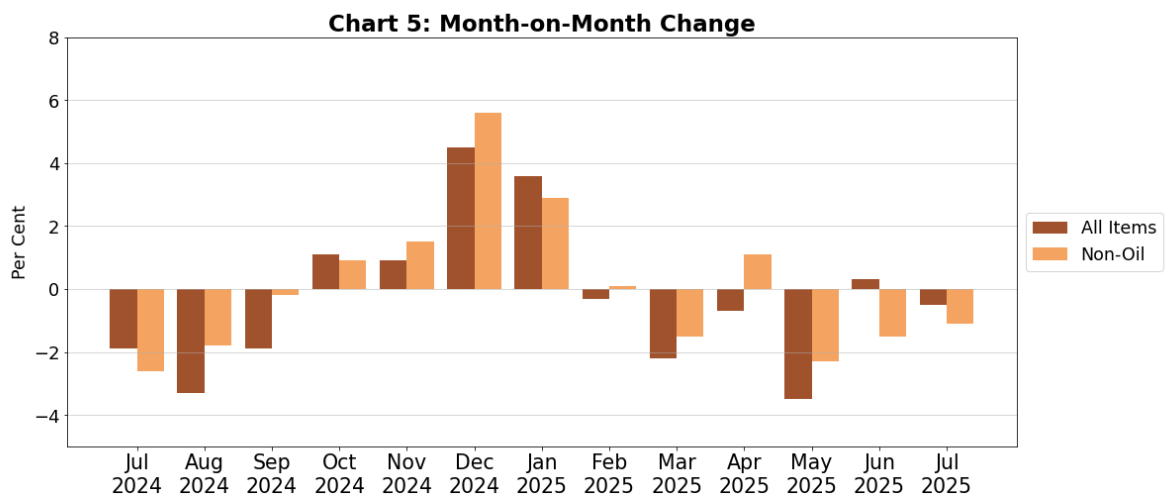
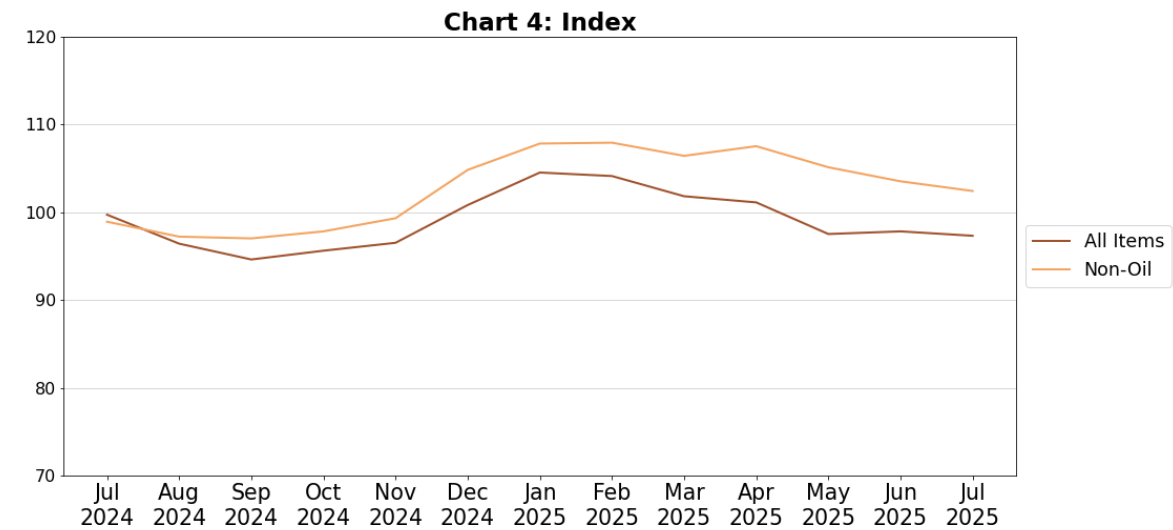


Table 1 Singapore Manufactured Products Price Index

July 2025

Commodity section / division	Weights	Index (2023=100)			% Change		
		May 2025	Jun 2025	Jul 2025	Jun 2025	Jul 2025	Jul 2025
					May 2025	Jun 2025	Jul 2024
All Items	10,000	102.2	101.4	100.5	-0.8	-0.9	1.6
Non-oil Items	8,369	106.8	105.1	103.7	-1.6	-1.3	4.4
Food & Live Animals	220	104.8	105.1	106.4	0.3	1.2	3.7
Meat & meat preparations	22	99.1	99.6	99.1	0.4	-0.4	0.4
Dairy products & birds' eggs	11	107.3	113.0	112.9	5.3	-0.1	5.6
Fish seafood & preparations	8	104.2	104.2	104.2	-	-	-
Cereals & cereal preparations	34	101.2	101.2	101.2	-	-	0.2
Vegetables & fruit	2	100.0	100.0	100.0	-	-	-
Coffee, tea, cocoa, spices & manufactures	17	152.5	154.4	161.5	1.3	4.6	17.2
Animal feeding stuff (excl unmilled cereals)	9	97.0	96.5	93.5	-0.5	-3.1	0.4
Miscellaneous food preparations	116	100.6	100.3	102.0	-0.3	1.7	3.1
Beverages & Tobacco	14	97.5	97.5	97.7	-	0.2	-0.8
Beverages	14	97.5	97.5	97.7	-	0.2	-0.8
Crude Materials (excl fuels)	40	100.0	99.8	99.2	-0.1	-0.7	-5.0
Crude rubber	34	100.0	99.9	98.8	-0.1	-1.1	-5.3
Cork & wood	2	102.3	102.3	102.3	-	-	-
Crude fertilizers & minerals	2	99.3	99.6	100.0	0.4	0.4	0.2
Metalliferous ores & metal scrap	3	97.8	97.0	100.9	-0.7	4.0	-7.3
Mineral Fuels, Lubricants & Related Materials	1,631	78.9	82.5	83.8	4.6	1.5	-13.2
Petroleum & products & related materials	1,617	78.8	82.5	83.8	4.7	1.6	-13.2
Gas	14	88.0	84.4	81.8	-4.0	-3.2	-18.9
Animal & Vegetable Oils, Fats & Waxes	9	115.4	114.1	111.4	-1.2	-2.3	18.0
Fixed vegetable fats & oils	9	115.4	114.1	111.4	-1.2	-2.3	18.0
Chemicals & Chemical Products	1,795	89.8	89.1	88.3	-0.8	-0.9	-10.2
Organic chemicals	767	84.9	84.1	83.4	-0.9	-0.9	-17.7
Inorganic chemicals	45	104.6	104.2	94.5	-0.4	-9.3	-5.6
Dyeing, tanning & colouring materials	15	99.2	98.5	98.4	-0.8	-0.1	-3.2
Medicinal & pharmaceutical products	253	97.5	97.4	97.3	-0.2	-0.1	-4.3
Essential oils & perfume; toilet cleaning products	141	98.8	98.6	97.7	-0.2	-0.9	-1.3
Plastics in primary forms	272	90.9	86.8	86.1	-4.5	-0.8	-12.6
Plastics in non-primary forms	18	92.7	92.7	92.7	-	-	-7.4
Chemical materials & products nes	284	87.4	89.2	88.9	2.0	-0.3	3.2
Manufactured Goods	255	96.1	95.6	95.6	-0.5	-0.1	-3.3
Rubber manufactures nes	11	96.5	96.7	96.9	0.1	0.2	-7.3
Wood & cork manufactures (excl furniture)	7	88.6	88.5	88.5	-0.1	-	0.7
Paper manufactures	31	94.1	94.3	94.1	0.2	-0.3	-1.6
Textile Yarn Fabrics Made-Up Articles Nes	7	91.7	93.1	92.8	1.6	-0.3	-9.0
Non-metal mineral manufactures nes	45	96.4	96.2	96.0	-0.2	-0.2	-0.7
Iron & steel	48	96.4	95.1	94.6	-1.4	-0.5	-5.7
Non-ferrous metals	17	96.5	94.8	97.7	-1.8	3.1	-5.2
Manufactures of metals nes	88	97.3	97.0	96.6	-0.3	-0.4	-2.8
Machinery & Transport Equipment	5,266	113.8	111.0	109.3	-2.4	-1.5	8.7
Machinery specialized for particular industries	661	97.2	97.1	97.0	-0.1	-0.1	-1.3
Metal working machinery	17	95.5	94.8	94.5	-0.7	-0.3	-4.9
General industrial machinery	65	101.6	102.0	101.1	0.4	-0.8	-1.7
Office machines & data-processing machines	589	99.0	98.7	98.6	-0.3	-0.1	0.4
Telecommunication apparatus	79	98.3	97.8	97.5	-0.6	-0.2	-4.6
Electrical machinery apparatus nes, electrical parts	3,856	119.5	115.8	113.5	-3.1	-1.9	12.1
Miscellaneous Manufactured Articles	772	102.7	105.2	103.6	2.4	-1.5	11.7
Furniture, bedding, mattresses, cushions & others	16	104.3	104.2	104.2	-0.1	-	1.2
Travel goods, handbags & similar containers	0	100.0	100.0	100.0	-	-	-
Professional scientific & controlling instruments	455	102.5	107.4	105.4	4.8	-1.9	19.4
Photographic & optical goods nes; watches & clocks	42	96.7	96.1	96.1	-0.6	0.1	-2.7
Miscellaneous manufactured articles nes	259	103.9	102.7	101.5	-1.1	-1.2	2.7

Figures may not sum to total due to rounding.

Table 2 Domestic Supply Price Index

July 2025

Commodity section / division	Weights	Index (2023=100)			% Change		
		May 2025	Jun 2025	Jul 2025	Jun 2025	Jul 2025	Jul 2025
					May 2025	Jun 2025	Jul 2024
All Items	10,000	97.5	97.8	97.3	0.3	-0.5	-2.4
Non-oil Items	7,196	105.1	103.5	102.4	-1.5	-1.1	3.5
Food & Live Animals	274	105.2	104.2	103.6	-1.0	-0.6	0.8
Live animals	6	93.0	87.8	82.8	-5.5	-5.8	-1.3
Meat & meat preparations	45	102.3	102.9	102.8	0.5	-0.1	1.6
Dairy products & birds' eggs	34	97.7	98.1	98.1	0.4	-	-0.2
Fish seafood & preparations	30	99.7	99.8	98.8	0.1	-1.0	0.6
Cereals & cereal preparations	42	99.4	99.1	99.2	-0.3	0.1	-1.0
Vegetables & fruit	37	99.0	96.7	96.2	-2.3	-0.5	-4.0
Sugar, sugar preparations & honey	7	92.9	92.3	91.2	-0.6	-1.2	-12.7
Coffee, tea, cocoa, spices & manufactures	22	165.0	159.0	156.1	-3.7	-1.8	11.6
Animal feeding stuff (excl unmilled cereals)	7	100.3	99.8	98.5	-0.5	-1.3	-0.7
Miscellaneous food preparations	44	103.5	102.4	102.3	-1.0	-0.1	2.2
Beverages & Tobacco	26	99.7	99.6	99.5	-0.1	-0.1	0.9
Beverages	23	98.9	98.9	98.9	-	-0.1	-0.1
Tobacco & manufactures	3	105.1	104.8	104.7	-0.3	-0.1	8.3
Crude Materials (excl fuels)	75	98.0	99.8	100.1	1.8	0.3	4.0
Hides Skins & Furskins	1	100.0	100.0	100.0	-	-	-
Oil seeds & oleaginous fruits	1	91.8	92.2	92.2	0.4	-	-4.1
Crude rubber	26	99.5	99.3	98.0	-0.2	-1.3	-5.6
Cork & wood	3	96.7	94.7	94.9	-2.1	0.3	-2.9
Crude fertilizers & minerals	18	111.8	111.2	109.0	-0.6	-1.9	9.9
Metalliferous ores & metal scrap	21	85.1	92.0	97.1	8.2	5.5	16.6
Crude animal & vegetable materials nes	6	96.9	98.1	96.6	1.3	-1.5	-1.3
Mineral Fuels, Lubricants & Related Materials	2,804	78.2	83.2	84.4	6.3	1.4	-17.0
Petroleum & products & related materials	2,624	77.9	83.1	84.4	6.7	1.5	-17.1
Gas	180	83.7	84.3	84.2	0.7	-0.2	-16.3
Animal & Vegetable Oils, Fats & Waxes	67	94.1	93.1	92.0	-1.1	-1.1	6.2
Fixed vegetable fats & oils	21	102.8	99.9	100.3	-2.8	0.4	12.6
Inedible Mixtures Of Animal Or Vegetable Fats Or Oils	46	90.1	89.9	88.2	-0.2	-1.9	3.2
Chemicals & Chemical Products	1,225	90.5	89.4	88.5	-1.1	-1.0	-9.6
Organic chemicals	573	85.3	84.5	83.5	-1.0	-1.2	-15.8
Inorganic chemicals	56	101.2	101.1	95.9	-0.1	-5.2	-1.6
Dyeing, tanning & colouring materials	42	95.7	94.8	94.3	-1.0	-0.4	-5.0
Medicinal & pharmaceutical products	100	104.5	104.4	103.9	-0.1	-0.5	-0.5
Essential oils & perfume; toilet cleaning products	77	97.8	97.7	97.3	-0.1	-0.4	-0.1
Plastics in primary forms	141	89.7	85.3	84.8	-4.9	-0.6	-13.0
Plastics in non-primary forms	33	92.7	92.7	93.0	-	0.3	-4.8
Chemical materials & products nes	204	91.3	90.8	90.6	-0.5	-0.2	-1.1
Manufactured Goods	416	95.4	95.2	95.2	-0.3	-	-2.7
Rubber manufactures nes	7	94.0	94.1	93.5	0.1	-0.6	-5.5
Wood & cork manufactures (excl furniture)	14	89.9	89.5	89.4	-0.5	-0.2	-1.1
Paper manufactures	34	92.4	92.1	92.4	-0.4	0.3	-2.7
Textile manufactures	13	96.4	96.7	97.9	0.3	1.2	-1.1
Non-metal mineral manufactures nes	83	97.2	96.9	96.3	-0.3	-0.6	-0.4
Iron & steel	97	91.2	89.5	89.2	-1.8	-0.4	-6.3
Non-ferrous metals	47	103.9	106.9	109.5	2.9	2.4	3.9
Manufactures of metals nes	120	95.8	95.2	94.8	-0.6	-0.5	-4.3
Machinery & Transport Equipment	4,316	110.6	108.2	106.7	-2.2	-1.3	6.7
Power-generating machinery & equipment	120	106.0	105.4	105.0	-0.6	-0.3	0.2
Machinery specialized for particular industries	415	96.3	95.8	95.6	-0.5	-0.2	-1.3
Metal working machinery	18	90.6	91.8	91.9	1.3	0.1	-1.8
General industrial machinery	156	97.7	98.0	97.9	0.4	-0.2	-1.3
Office machines & data-processing machines	495	98.2	97.5	97.6	-0.7	0.1	-0.6
Telecommunication apparatus	115	95.3	95.3	95.2	-0.1	-0.1	-4.6
Electrical machinery apparatus nes, electrical parts	2,950	116.4	113.0	110.9	-2.9	-1.8	10.2
Road vehicles	47	102.5	102.2	101.9	-0.3	-0.3	2.3
Miscellaneous Manufactured Articles	797	104.2	105.7	104.7	1.4	-1.0	9.7
Prefab building, sanitary plumbing, lighting nes	6	89.9	89.5	90.6	-0.5	1.3	-7.9
Furniture, bedding, mattresses, cushions & others	30	102.4	102.6	103.9	0.2	1.3	4.0
Travel goods, handbags & similar containers	20	110.0	111.0	111.2	0.9	0.2	5.0
Articles of apparel & clothing accessories	27	89.5	89.5	89.8	0.1	0.2	-0.1
Footwear	6	103.9	99.6	101.7	-4.2	2.1	-0.2
Professional scientific & controlling instruments	387	99.4	103.0	101.2	3.6	-1.8	14.3
Photographic & optical goods nes; watches & clocks	59	102.0	101.6	101.4	-0.4	-0.2	-1.8
Miscellaneous manufactured articles nes	261	113.5	112.8	112.1	-0.6	-0.6	9.1

Figures may not sum to total due to rounding.

Table 3 Singapore Manufactured Products Price Index

Section	All Items	Non-oil Items	Food & Live Animals	Beverages & Tobacco	Crude Materials	Mineral Fuels	Animal & Vegetable Oils, Fats & Waxes	Chemicals & Chemical Products	Manu- factured Goods	Machinery & Transport Equipment	Misc. Manu- factured Articles
Weights	10,000	8,369	220	14	40	1,631	9	1,795	255	5,266	772
Index (2023=100)											
2021	91.1	93.6	88.5	91.8	85.5	77.4	102.0	100.7	95.4	90.5	97.5
2022	104.7	102.8	96.0	95.6	102.2	115.0	128.3	108.4	102.2	101.5	100.4
2023	100.0	100.0	100.0	100.0	100.0	100.0	100.0	100.0	100.0	100.0	100.0
2024	99.5	100.7	102.8	97.2	103.4	93.3	94.1	97.6	98.3	102.9	93.4
2024											
Jul	98.9	99.4	102.6	98.5	104.4	96.6	94.4	98.3	98.8	100.6	92.7
Aug	95.7	97.1	102.5	95.4	104.4	88.2	94.2	96.7	98.1	97.9	90.9
Sep	94.5	96.8	102.0	95.4	105.1	82.8	92.2	94.0	96.9	98.5	90.4
Oct	96.0	97.7	103.5	95.4	106.2	87.2	94.1	94.1	97.0	99.6	91.4
Nov	97.5	99.4	104.6	95.4	107.7	87.9	95.2	94.9	97.0	102.4	88.6
Dec	103.5	106.2	105.3	95.4	109.0	89.6	102.6	95.5	97.3	112.8	90.0
2025											
Jan	107.2	109.6	105.4	96.5	106.3	95.0	105.7	94.8	97.4	118.3	90.9
Feb	107.2	110.0	105.4	96.5	104.1	92.9	106.9	95.2	97.1	118.1	94.9
Mar	104.5	107.9	104.9	96.5	103.1	86.9	105.9	94.0	97.1	114.9	97.3
Apr	105.1	109.6	105.9	96.5	102.2	82.5	106.0	93.2	96.6	117.1	102.1
May	102.2	106.8	104.8	97.5	100.0	78.9	115.4	89.8	96.1	113.8	102.7
Jun	101.4	105.1	105.1	97.5	99.8	82.5	114.1	89.1	95.6	111.0	105.2
Jul	100.5	103.7	106.4	97.7	99.2	83.8	111.4	88.3	95.6	109.3	103.6
Percentage Change over same period of previous year (%)											
2022	14.9	9.9	8.4	4.1	19.5	48.5	25.8	7.7	7.1	12.1	3.0
2023	-4.5	-2.7	4.2	4.5	-2.2	-13.0	-22.1	-7.7	-2.1	-1.5	-0.4
2024	-0.5	0.7	2.8	-2.8	3.4	-6.7	-5.9	-2.4	-1.7	2.9	-6.6
2024											
Jul	0.2	0.2	3.2	-1.3	7.0	-	-6.8	2.1	-0.5	0.8	-8.4
Aug	-5.7	-2.6	2.2	-4.4	5.6	-20.0	-7.1	-2.5	-2.0	-1.8	-10.1
Sep	-9.0	-4.6	1.3	-4.7	4.7	-28.8	-5.8	-7.0	-3.2	-3.1	-11.7
Oct	-6.2	-3.4	2.2	-4.7	10.8	-19.6	-4.3	-7.4	-3.0	-1.4	-10.6
Nov	-4.0	-2.3	4.1	-4.7	12.9	-13.1	3.2	-4.9	-2.6	-0.4	-11.8
Dec	2.7	4.6	5.3	-4.7	14.2	-7.8	11.9	-2.4	-1.7	9.4	-11.1
2025											
Jan	6.1	7.7	5.7	-2.0	7.5	-2.2	13.6	-2.6	-1.9	13.7	-8.4
Feb	6.0	8.0	3.9	-2.0	3.8	-4.9	14.2	-4.2	-1.9	14.2	-3.1
Mar	3.0	5.9	3.8	-2.0	4.0	-12.6	15.8	-6.6	-1.6	11.3	0.9
Apr	3.2	7.2	2.8	-2.0	-0.2	-17.9	15.7	-7.7	-2.5	13.0	6.8
May	1.1	4.5	1.7	-1.0	-0.6	-17.6	25.6	-10.4	-3.3	9.3	8.6
Jun	-0.1	2.5	0.6	-1.0	-2.3	-14.5	20.1	-9.7	-3.1	5.4	13.2
Jul	1.6	4.4	3.7	-0.8	-5.0	-13.2	18.0	-10.2	-3.3	8.7	11.7

Table 4 Domestic Supply Price Index

Section	All Items	Non-oil Items	Food & Live Animals	Beverages & Tobacco	Crude Materials	Mineral Fuels	Animal & Vegetable Oils, Fats & Waxes	Chemicals & Chemical Products	Manu- factured Goods	Machinery & Transport Equipment	Misc. Manu- factured Articles
Weights	10,000	7,196	274	26	75	2,804	67	1,225	416	4,316	797
Index (2023=100)											
2021	90.4	92.8	91.0	88.0	88.9	84.6	107.7	97.1	96.8	90.9	95.2
2022	107.2	102.1	98.5	96.4	99.2	119.2	126.9	106.0	104.0	101.6	99.1
2023	100.0	100.0	100.0	100.0	100.0	100.0	100.0	100.0	100.0	100.0	100.0
2024	98.7	99.5	102.5	97.8	97.5	96.7	92.1	97.3	97.2	101.0	96.0
2024											
Jul	99.7	98.9	102.8	98.7	96.2	101.7	86.6	97.9	97.8	100.0	95.4
Aug	96.4	97.2	103.0	97.2	100.1	94.5	86.3	96.3	96.9	97.7	94.3
Sep	94.6	97.0	102.7	97.5	96.8	88.5	89.4	94.3	95.9	98.1	94.1
Oct	95.6	97.8	103.3	97.1	98.0	90.1	92.2	94.6	95.9	99.1	94.9
Nov	96.5	99.3	104.0	96.5	96.8	89.3	87.8	95.2	96.4	101.6	93.7
Dec	100.8	104.8	104.8	96.3	96.2	90.6	93.0	95.6	97.1	110.4	95.0
2025											
Jan	104.5	107.8	105.8	98.6	97.5	95.8	94.7	95.8	97.5	115.0	95.9
Feb	104.1	107.9	105.7	98.8	94.7	94.3	92.5	95.6	97.0	114.8	99.2
Mar	101.8	106.4	106.8	98.8	99.1	90.1	92.4	94.9	96.7	111.9	101.0
Apr	101.1	107.5	106.1	99.4	98.9	84.5	93.4	93.1	96.5	113.7	104.7
May	97.5	105.1	105.2	99.7	98.0	78.2	94.1	90.5	95.4	110.6	104.2
Jun	97.8	103.5	104.2	99.6	99.8	83.2	93.1	89.4	95.2	108.2	105.7
Jul	97.3	102.4	103.6	99.5	100.1	84.4	92.0	88.5	95.2	106.7	104.7
Percentage Change over same period of previous year (%)											
2022	18.6	10.0	8.2	9.5	11.6	40.8	17.8	9.2	7.5	11.7	4.0
2023	-6.7	-2.1	1.5	3.8	0.8	-16.1	-21.2	-5.7	-3.9	-1.6	1.0
2024	-1.3	-0.5	2.5	-2.2	-2.5	-3.3	-7.9	-2.7	-2.8	1.0	-4.0
2024											
Jul	1.8	0.2	2.6	-2.6	-1.3	7.4	-13.5	1.1	-2.0	1.4	-5.3
Aug	-3.4	-1.9	2.1	-4.1	2.4	-8.1	-15.1	-2.7	-2.4	-1.0	-6.0
Sep	-7.1	-3.2	2.0	-3.4	0.9	-18.3	-10.8	-6.7	-3.3	-1.9	-6.7
Oct	-5.1	-1.9	2.8	-3.4	2.9	-14.3	-7.5	-6.7	-3.3	-0.2	-5.3
Nov	-3.9	-0.6	4.4	-4.0	-1.9	-12.7	-11.2	-4.3	-2.1	1.5	-5.4
Dec	1.5	5.1	4.9	-4.1	-1.5	-7.3	-4.8	-2.5	-1.0	10.2	-4.6
2025											
Jan	5.5	8.5	4.8	0.6	0.4	-1.3	-3.6	-2.3	-0.3	15.2	-2.9
Feb	5.5	9.3	4.6	0.5	-3.3	-4.2	-4.3	-3.5	-0.7	16.2	1.0
Mar	3.6	9.2	5.7	0.6	1.3	-11.5	7.2	-4.7	-0.7	15.5	3.2
Apr	-1.1	6.2	4.4	1.7	1.9	-19.2	-0.8	-7.0	-1.3	10.6	7.4
May	-3.9	3.8	3.1	1.1	-1.3	-23.5	-2.9	-8.8	-2.7	7.4	7.7
Jun	-3.7	2.0	2.1	0.6	2.8	-18.3	-4.5	-8.9	-2.8	3.9	10.9
Jul	-2.4	3.5	0.8	0.9	4.0	-17.0	6.2	-9.6	-2.7	6.7	9.7

NOTATIONS

- nes not elsewhere specified
- nil or negligible

NOTES

The Singapore Manufactured Products and Domestic Supply Price Indices report contains statistics that are the most recent available at the time of its preparation.

Some statistics, particularly those for the most recent time periods, are provisional and may be subject to revision in later issues.



[Latest Data using the SingStat Table Builder](#)



[Our Publications and Methodology](#)



[Visualising Data: Dashboards, Infographics](#)



[Video: What is the Producer Price Index \(PPI\)?](#)



[Singapore Manufactured Products & Domestic Supply Price Indices Report](#)



[More Info Related to PPI](#)



Singapore Department of Statistics
29 Aug 2025

Find us on:



SINGAPORE DEPARTMENT OF STATISTICS COMMUNICATIONS & INFORMATION SERVICES

The Singapore Department of Statistics (DOS) offers official statistics, data insights, visualisations, and statistical resources through user-friendly platforms.



SingStat Website

Visit this convenient gateway to access latest data and statistical information.

Data across the six major themes of Economy & Prices, Industry, Trade & Investment, Population, Households, and Society covering some 200 topics such as Gross Domestic Product, Consumer Price Index, Retail Sales and Food & Beverage Services Indices, Producer Price Indices, Business Expectations, Business Receipts Index, Trade in Services, Direct Investment, Population Indicators, Household Income, Household Expenditure, Deaths and Life Expectancy, Births and Fertility, Marriages and Divorces, and more.

Publications

- **Statistics Singapore Newsletter** - features articles on latest key statistical activities, recent survey findings, and methodological improvements.
- **Information Papers** - highlight conceptual and methodological changes and improvements in official statistics.
- **Occasional Papers** - present statistical trends and observations on important social and economic issues to stimulate discussion and research.
- **eBook of Statistics** - consolidates latest information and resources on key economic and socio-demographic domains.
- **Singapore in Figures** - allows exploration of key economic and socio-demographic statistics through interactive dashboards.

Visualisations such as infographics and interactive dashboards with latest data, and videos to explain data and statistical concepts.

Businesses Insights Tool for Enterprises (BITE) serves businesses with bite-sized data for big decisions, giving firms insights on their customers, industries, and business performance.

Advance Release Calendar with dates of upcoming data and publication releases in the next six months.



SingStat Table Builder

Access over 2,400 data tables for free across various economic and socio-demographic domains from 70 public sector agencies. Watch the [video](#) to find out how you can easily access and customise data tables.



SingStat Express

Subscribe to receive alerts on the latest press releases, occasional/ information papers, and newsletters.



SingStat Mobile App

Download the app for fast and convenient access to commonly used statistics from your mobile devices.

Over 300 charts are available across over 40 data categories for easy access to visualise data trends.



For statistical enquiries, you may reach us at:

✉ email: info@singstat.gov.sg or submit the [Data Request Form](#)

☎ phone: 1800-323 8118* (Local users) or (65) 6332 7738 (Overseas users)

* Calls from mobile telephone lines to 1800 local toll-free number may be subject to mobile airtime charges as imposed by the relevant mobile service provider.

Find us on social media!



@SingStat



@singstat_dos



@SingStatvideo



@sg-department-of-statistics

DEPARTMENT OF
STATISTICS
SINGAPORE

—Empowering You with Trusted Data—