



SINGAPORE MANUFACTURED PRODUCTS & DOMESTIC SUPPLY PRICE INDICES

March 2018

**SINGAPORE MANUFACTURED PRODUCTS &
DOMESTIC SUPPLY PRICE INDICES, March 2018**
ISSN 2591-7447

© Department of Statistics, Ministry of Trade & Industry, Republic of Singapore

Reproducing or quoting any part of this publication is permitted, provided this publication is accredited as the source. Please refer to the Statistics Singapore Website Terms of Use (<http://www.singstat.gov.sg/terms-of-use>) for more details on the conditions of use of this publication.

Statistical activities conducted by the Singapore Department of Statistics are governed by the provisions of the Statistics Act (Cap. 317). The Act guarantees the confidentiality of information collected from individuals and companies. It spells out the legislative authority and responsibility of the Chief Statistician. The Act is available in the Department's Website (www.singstat.gov.sg).

SINGAPORE MANUFACTURED PRODUCTS PRICE INDEX (2012 = 100)

March 2018

Singapore Manufactured Products Price Index

Change over previous month

The Singapore Manufactured Products Price Index rose 1.4 per cent in March 2018, following the 0.6 per cent increase in February 2018. The Oil index went down 0.5 per cent, due mainly to cheaper power kerosene and bitumen, extending the 3.0 per cent decrease in February 2018. The Non-oil index rose 1.8 per cent in March 2018, after rising 1.4 per cent in the previous month.

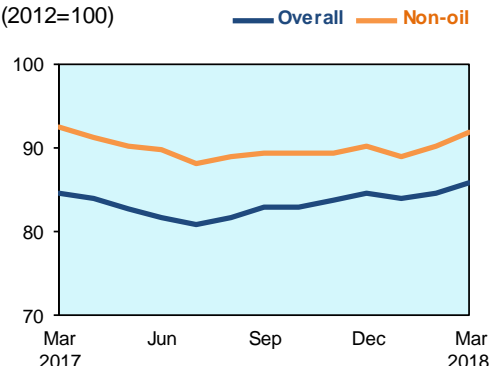
For the Non-oil sub-indices, increases led by the Chemicals & Chemical Products (7.0 per cent) index, due mainly to higher prices of organic chemicals, and the Crude Materials (0.1 per cent) index were partially offset by decreases in the Animal & Vegetable Oils (-1.2 per cent) and Machinery & Transport Equipment (-0.9 per cent) indices.

Change over same period of previous year

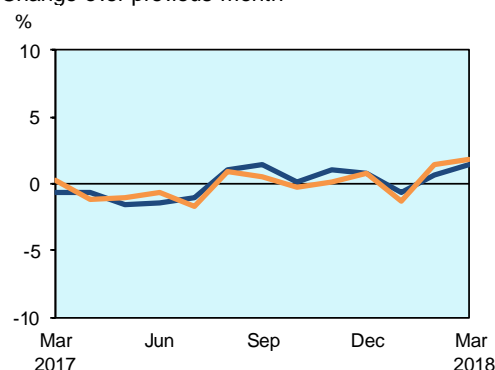
The Singapore Manufactured Products Price Index increased 1.3 per cent in March 2018 over the previous year, against the 0.8 per cent drop in February 2018. The Oil index rose 12.9 per cent while the Non-oil index fell 0.7 per cent.

Among the Non-oil sub-indices, lower prices of Animal & Vegetable Oils (-12.5 per cent), Machinery & Transport Equipment (-9.0 per cent) and Food & Live Animals (-1.1 per cent) were partially moderated by higher prices of Chemicals & Chemical Products (10.9 per cent), Crude Materials (6.6 per cent), Miscellaneous Manufactured Articles (3.2 per cent), Manufactured Goods (2.4 per cent) and Beverages & Tobacco (0.6 per cent).

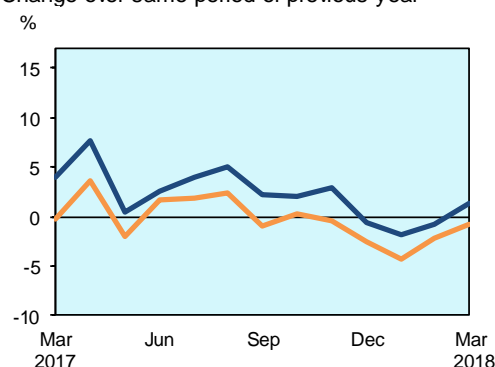
Singapore Manufactured Products Price Index (2012=100)



Change over previous month



Change over same period of previous year



DOMESTIC SUPPLY PRICE INDEX (2012 = 100)

March 2018

Domestic Supply Price Index

Change over previous month

The Domestic Supply Price Index decreased 0.3 per cent in March 2018, after declining 1.0 per cent in the previous month. The Oil index slipped 0.3 per cent in March 2018, owing to lower prices of power kerosene and crude petroleum, following the 3.3 per cent decrease in February 2018. The Non-oil index went down 0.4 per cent, after being unchanged in the previous month.

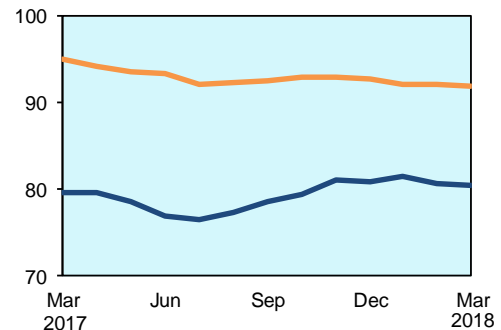
Declines in the Non-oil sub-indices were led by the Food & Live Animals (-1.5 per cent) and Machinery & Transport Equipment (-1.2 per cent), due mainly to lower prices of vegetables and integrated circuits respectively. The increase in the Chemicals & Chemical Products (2.1 per cent) index was attributed mainly to higher prices of organic chemicals.

Change over same period of previous year

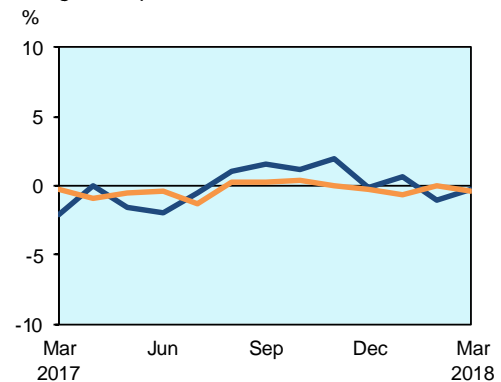
The Domestic Supply Price Index rose 0.9 per cent in March 2018 from a year ago, in contrast to the 0.9 per cent decrease from the previous month. The Oil index rose 13.5 per cent while the Non-oil index declined 3.3 per cent.

For the Non-oil sub-indices, decreases in the Animal & Vegetable Oils (-11.3 per cent), Machinery & Transport Equipment (-6.5 per cent), Food & Live Animals (-2.9 per cent) and Miscellaneous Manufactured Articles (-2.6 per cent) indices were partially moderated by increases in the Chemicals & Chemical Products (2.1 per cent), Manufactured Goods (1.8 per cent) and Crude Materials (1.4 per cent) indices.

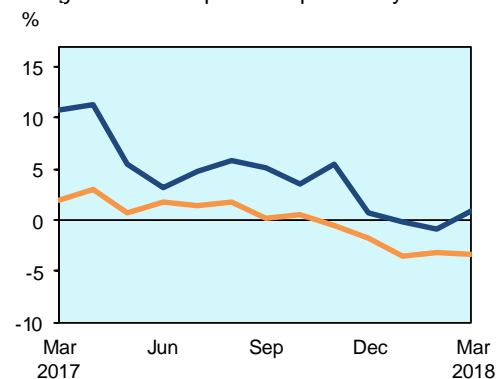
Domestic Supply Price Index
(2012=100) — Overall — Non-oil



Change over previous month



Change over same period of previous year



TECHNICAL NOTE

The *Singapore Manufactured Products Price Index (SMPPPI)* monitors price changes of locally manufactured commodities. The weights of the index are derived from the distribution of local production by commodity in 2011. Ex-factory prices are obtained from principal manufacturers of the items concerned.

The *Domestic Supply Price Index (DSPI)* is designed to measure the changes in the price level of goods manufactured locally or imported which are retained for use in the domestic economy by the government, business or household sectors. For imported products, the prices refer to those paid by importers in bringing the goods into Singapore, commonly referred to as c.i.f. prices. In the case of Singapore manufactured products, the quotations used are ex-factory prices. The weight for each commodity item is proportional to the value of its total supply or availability in the domestic market in 2011.

Index Formula

The 2012-based series is compiled using the 'modified Laspeyres' formula where the weight reference period of 2011 preceded the price reference period of 2012. The geometric mean (GM) formula has been adopted in the computation of unweighted elementary aggregate price indices. The arithmetic mean (AM) formula is applied in compiling indices at higher levels of aggregation where weights of specific sub-indices are available.

An Information Paper on the Rebasing of Singapore Manufactured Products and Domestic Supply Price Indices (2012=100) is available on the department's website at <http://www.singstat.gov.sg/publications/publications-and-papers/economy#prices>.

Measurement of Changes in Price Indices

Change over previous month compares the index of the month with that of the preceding month. Such comparisons measure the change in the price index between two consecutive months. They serve as useful short-term indicators of the price movements. As the price indices are found not to be seasonal, it is not necessary for seasonal adjustment to be carried out.

Change over same period of previous year measures change in the index over a twelve-month period. Such comparisons compare the movement in the price index between similar months in two consecutive years.

Dissemination of Data

The Singapore Manufactured Products and Domestic Supply Price Indices are published in the Monthly Digest of Statistics.

Table 1 Singapore Manufactured Products Price Index

March 2018

| Commodity section / division | Weights | Index (2012=100) | | | % Change | | |
|--|---------------|------------------|-------------|-------------|------------|------------|-------------|
| | | Jan 2018 | Feb 2018 | Mar 2018 | Feb 2018 | Mar 2018 | Mar 2017 |
| | | | | | Jan 2018 | Feb 2018 | Mar 2017 |
| All Items | 10,000 | 84.1 | 84.6 | 85.8 | 0.6 | 1.4 | 1.3 |
| Non-oil Items | 7,782 | 89.0 | 90.2 | 91.9 | 1.4 | 1.8 | -0.7 |
| Food & Live Animals | 266 | 102.0 | 102.0 | 102.1 | 0.1 | - | -1.1 |
| Meat & meat preparations | 22 | 99.3 | 100.3 | 100.1 | 1.1 | -0.2 | 0.5 |
| Dairy products & birds' eggs | 58 | 94.8 | 95.1 | 95.0 | 0.3 | -0.1 | -4.3 |
| Fish seafood & preparations | 7 | 119.2 | 119.2 | 119.2 | - | - | 2.2 |
| Cereals & cereal preparations | 44 | 108.0 | 108.0 | 108.6 | - | 0.5 | -0.6 |
| Vegetables & fruit | 4 | 104.3 | 104.3 | 104.3 | - | - | - |
| Sugar, sugar preparations & honey | 2 | 101.6 | 101.3 | 102.6 | -0.2 | 1.3 | 5.0 |
| Coffee, tea, cocoa, spices & manufactures | 31 | 99.0 | 98.5 | 98.3 | -0.5 | -0.2 | -0.9 |
| Animal feeding stuff (excl unmilled cereals) | 9 | 105.4 | 106.9 | 106.9 | 1.4 | - | 1.6 |
| Miscellaneous food preparations | 89 | 103.5 | 103.3 | 103.3 | -0.2 | - | -0.6 |
| Beverages & Tobacco | 54 | 97.8 | 98.4 | 98.1 | 0.5 | -0.2 | 0.6 |
| Beverages | 27 | 96.0 | 96.0 | 96.0 | - | - | -1.8 |
| Tobacco & manufactures | 27 | 99.6 | 100.6 | 100.2 | 1.0 | -0.5 | 2.9 |
| Crude Materials (excl fuels) | 7 | 115.7 | 115.5 | 115.6 | -0.2 | 0.1 | 6.6 |
| Cork & wood | 1 | 124.8 | 124.8 | 124.8 | - | - | 1.0 |
| Crude fertilizers & minerals | 3 | 132.6 | 132.0 | 132.3 | -0.4 | 0.2 | 13.4 |
| Metalliferous ores & metal scrap | 3 | 98.1 | 98.1 | 98.1 | - | - | - |
| Mineral Fuels, Lubricants & Related Materials | 2,218 | 66.9 | 64.9 | 64.5 | -3.0 | -0.5 | 12.9 |
| Petroleum & products & related materials | 2,187 | 66.9 | 64.9 | 64.7 | -2.9 | -0.4 | 13.5 |
| Gas | 31 | 68.9 | 61.1 | 55.9 | -11.4 | -8.4 | -20.3 |
| Animal & Vegetable Oils, Fats & Waxes | 28 | 91.6 | 90.6 | 89.5 | -1.1 | -1.2 | -12.5 |
| Fixed vegetable fats & oils | 16 | 113.0 | 109.0 | 107.6 | -3.6 | -1.3 | -12.3 |
| Animal & vegetable oils, fats & waxes nes | 12 | 63.5 | 66.5 | 65.9 | 4.7 | -1.0 | -12.9 |
| Chemicals & Chemical Products | 2,335 | 91.4 | 96.8 | 103.6 | 5.8 | 7.0 | 10.9 |
| Organic chemicals | 1,402 | 91.0 | 99.8 | 110.6 | 9.7 | 10.8 | 21.3 |
| Inorganic chemicals | 56 | 83.7 | 83.8 | 84.3 | 0.1 | 0.7 | -0.8 |
| Dyeing, tanning & colouring materials | 33 | 93.2 | 94.6 | 94.5 | 1.5 | -0.1 | 3.7 |
| Medicinal & pharmaceutical products | 157 | 99.2 | 99.2 | 99.0 | -0.1 | -0.1 | 0.9 |
| Essential oils & perfume; toilet cleaning products | 64 | 109.8 | 110.2 | 109.5 | 0.3 | -0.6 | 2.1 |
| Plastics in primary forms | 323 | 91.7 | 92.6 | 94.6 | 1.0 | 2.2 | -1.0 |
| Plastics in non-primary forms | 38 | 92.5 | 91.9 | 91.9 | -0.6 | - | -5.7 |
| Chemical materials & products nes | 262 | 85.6 | 84.6 | 84.9 | -1.2 | 0.3 | -12.6 |
| Manufactured Goods | 439 | 97.4 | 97.7 | 97.6 | 0.3 | - | 2.4 |
| Leather manufactures nes | 5 | 140.8 | 140.8 | 140.8 | - | - | 11.8 |
| Rubber manufactures nes | 18 | 111.9 | 111.9 | 111.6 | - | -0.2 | 3.2 |
| Wood & cork manufactures (excl furniture) | 8 | 103.8 | 103.8 | 103.8 | - | - | - |
| Paper manufactures | 44 | 98.5 | 98.2 | 98.2 | -0.3 | - | -3.3 |
| Textile manufactures | 10 | 104.3 | 104.3 | 104.3 | - | - | 2.0 |
| Non-metal mineral manufactures nes | 77 | 96.9 | 97.3 | 97.3 | 0.3 | 0.1 | 1.2 |
| Iron & steel | 63 | 75.4 | 75.6 | 75.1 | 0.3 | -0.7 | 4.8 |
| Non-ferrous metals | 31 | 104.5 | 104.8 | 105.0 | 0.2 | 0.2 | 5.8 |
| Manufactures of metals nes | 183 | 100.7 | 101.1 | 101.2 | 0.4 | - | 2.9 |
| Machinery & Transport Equipment | 3,900 | 84.1 | 83.3 | 82.5 | -1.0 | -0.9 | -9.0 |
| Power-generating machinery & equipment | 33 | 101.2 | 96.1 | 96.0 | -5.0 | -0.2 | 5.4 |
| Machinery specialized for particular industries | 376 | 91.4 | 90.6 | 90.5 | -0.8 | -0.1 | -1.7 |
| Metal working machinery | 21 | 96.5 | 96.5 | 96.5 | - | - | -0.3 |
| General industrial machinery | 167 | 99.3 | 99.4 | 99.3 | 0.1 | -0.1 | -2.8 |
| Office machines & data-processing machines | 1,143 | 75.4 | 75.2 | 75.0 | -0.2 | -0.3 | -8.0 |
| Telecommunication apparatus | 49 | 97.9 | 97.8 | 97.8 | -0.1 | - | -3.3 |
| Electrical machinery apparatus nes, electrical parts | 2,076 | 85.0 | 83.8 | 82.6 | -1.5 | -1.4 | -12.0 |
| Road vehicles | 35 | 116.8 | 116.8 | 116.7 | - | - | 1.4 |
| Miscellaneous Manufactured Articles | 753 | 96.2 | 96.4 | 96.4 | 0.2 | - | 3.2 |
| Furniture, bedding, mattresses, cushions & others | 31 | 118.2 | 118.2 | 118.2 | - | - | 1.0 |
| Travel goods, handbags & similar containers | 1 | 111.1 | 110.2 | 110.3 | -0.8 | 0.1 | -3.8 |
| Articles of apparel & clothing accessories | 27 | 94.1 | 94.1 | 94.0 | - | -0.1 | -4.5 |
| Professional scientific & controlling instruments | 327 | 90.8 | 91.2 | 91.0 | 0.4 | -0.2 | -5.3 |
| Photographic & optical goods nes; watches & clocks | 21 | 81.0 | 81.1 | 81.0 | 0.2 | -0.1 | -0.2 |
| Miscellaneous manufactured articles nes | 346 | 100.2 | 100.4 | 100.6 | 0.2 | 0.1 | 13.1 |

Table 2 Domestic Supply Price Index

March 2018

| Commodity section / division | Weights | Index (2012=100) | | | % Change | | |
|--|---------------|------------------|-------------|-------------|-------------|-------------|-------------|
| | | Jan 2018 | Feb 2018 | Mar 2018 | Feb 2018 | Mar 2018 | Mar 2018 |
| | | | | | Jan 2018 | Feb 2018 | Mar 2017 |
| All Items | 10,000 | 81.5 | 80.7 | 80.5 | -1.0 | -0.3 | 0.9 |
| Non-oil Items | 6,300 | 92.2 | 92.2 | 91.9 | - | -0.4 | -3.3 |
| Food & Live Animals | 327 | 100.4 | 100.3 | 98.8 | -0.1 | -1.5 | -2.9 |
| Live animals | 14 | 96.5 | 100.2 | 95.2 | 3.9 | -5.0 | -5.7 |
| Meat & meat preparations | 44 | 98.8 | 99.3 | 97.3 | 0.4 | -2.0 | -4.6 |
| Dairy products & birds' eggs | 72 | 97.1 | 94.3 | 92.8 | -2.8 | -1.6 | -3.4 |
| Fish seafood & preparations | 23 | 109.6 | 111.1 | 112.0 | 1.4 | 0.8 | 0.7 |
| Cereals & cereal preparations | 49 | 103.5 | 103.8 | 105.0 | 0.3 | 1.1 | 2.9 |
| Vegetables & fruit | 26 | 110.8 | 112.1 | 102.3 | 1.2 | -8.7 | -3.5 |
| Sugar, sugar preparations & honey | 13 | 83.8 | 82.7 | 79.8 | -1.3 | -3.4 | -22.1 |
| Coffee, tea, cocoa, spices & manufactures | 27 | 93.4 | 93.7 | 93.6 | 0.3 | -0.2 | -9.0 |
| Animal feeding stuff (excl unmilled cereals) | 4 | 107.7 | 108.4 | 108.6 | 0.7 | 0.2 | 2.9 |
| Miscellaneous food preparations | 55 | 102.3 | 102.3 | 102.2 | - | -0.1 | 0.4 |
| Beverages & Tobacco | 44 | 99.9 | 100.1 | 99.9 | 0.2 | -0.2 | - |
| Beverages | 31 | 98.3 | 98.3 | 98.1 | - | -0.2 | -0.8 |
| Tobacco & manufactures | 13 | 103.8 | 104.5 | 104.1 | 0.7 | -0.4 | 1.9 |
| Crude Materials (excl fuels) | 59 | 88.1 | 88.2 | 88.0 | 0.2 | -0.3 | 1.4 |
| Hides, skins & furskins raw | 2 | 86.0 | 85.1 | 85.1 | -1.1 | -0.1 | -7.3 |
| Oil seeds & oleaginous fruits | 1 | 93.0 | 91.5 | 92.0 | -1.7 | 0.5 | -5.7 |
| Crude rubber | 2 | 89.4 | 85.7 | 85.4 | -4.1 | -0.4 | -6.2 |
| Cork & wood | 5 | 90.8 | 92.7 | 92.7 | 2.1 | - | 1.4 |
| Textile fibres & their wastes | 1 | 102.2 | 97.8 | 97.7 | -4.3 | -0.1 | -11.4 |
| Crude fertilizers & minerals | 31 | 81.1 | 81.1 | 81.0 | - | -0.2 | 2.0 |
| Metalliferous ores & metal scrap | 11 | 96.1 | 96.7 | 95.9 | 0.7 | -0.9 | 5.0 |
| Crude animal & vegetable materials nes | 6 | 104.8 | 105.3 | 105.3 | 0.5 | - | -0.1 |
| Mineral Fuels, Lubricants & Related Materials | 3,700 | 63.3 | 61.2 | 61.0 | -3.3 | -0.3 | 13.5 |
| Petroleum & products & related materials | 3,527 | 62.7 | 60.6 | 60.4 | -3.4 | -0.2 | 13.8 |
| Gas | 173 | 76.2 | 75.2 | 73.7 | -1.4 | -1.9 | 8.8 |
| Animal & Vegetable Oils, Fats & Waxes | 44 | 74.3 | 74.6 | 73.6 | 0.5 | -1.4 | -11.3 |
| Fixed vegetable fats & oils | 32 | 77.3 | 76.9 | 75.6 | -0.6 | -1.6 | -11.2 |
| Animal & vegetable oils, fats & w axes nes | 12 | 65.6 | 68.2 | 67.6 | 4.0 | -0.9 | -11.7 |
| Chemicals & Chemical Products | 1,181 | 87.8 | 89.2 | 91.1 | 1.6 | 2.1 | 2.1 |
| Organic chemicals | 612 | 87.6 | 90.0 | 93.7 | 2.7 | 4.1 | 8.9 |
| Inorganic chemicals | 64 | 90.4 | 90.8 | 91.2 | 0.4 | 0.3 | 7.7 |
| Dyeing, tanning & colouring materials | 17 | 88.8 | 90.1 | 90.3 | 1.4 | 0.3 | 2.5 |
| Medicinal & pharmaceutical products | 102 | 78.3 | 80.0 | 79.9 | 2.2 | -0.2 | -3.7 |
| Essential oils & perfume; toilet cleaning products | 30 | 98.0 | 98.4 | 98.1 | 0.4 | -0.2 | - |
| Plastics in primary forms | 92 | 88.8 | 89.8 | 90.5 | 1.1 | 0.8 | -1.2 |
| Plastics in non-primary forms | 24 | 96.8 | 97.2 | 97.1 | 0.4 | -0.1 | -1.4 |
| Chemical materials & products nes | 240 | 89.1 | 88.4 | 88.1 | -0.9 | -0.3 | -10.4 |
| Manufactured Goods | 668 | 94.0 | 94.3 | 94.0 | 0.3 | -0.2 | 1.8 |
| Leather manufactures nes | 2 | 140.8 | 140.8 | 140.8 | - | - | 11.8 |
| Rubber manufactures nes | 18 | 94.5 | 94.3 | 94.1 | -0.2 | -0.3 | -3.0 |
| Wood & cork manufactures (excl furniture) | 7 | 104.2 | 104.2 | 104.2 | - | - | - |
| Paper manufactures | 67 | 100.4 | 100.6 | 100.7 | 0.2 | - | 1.8 |
| Textile manufactures | 11 | 97.2 | 97.1 | 97.3 | -0.1 | 0.2 | -3.2 |
| Non-metal mineral manufactures nes | 130 | 95.0 | 95.3 | 95.5 | 0.4 | 0.2 | -1.2 |
| Iron & steel | 148 | 83.5 | 84.5 | 85.1 | 1.2 | 0.8 | 6.0 |
| Non-ferrous metals | 118 | 96.8 | 96.1 | 94.0 | -0.7 | -2.2 | 2.4 |
| Manufactures of metals nes | 167 | 96.8 | 97.2 | 97.1 | 0.4 | -0.1 | 1.5 |
| Machinery & Transport Equipment | 3,229 | 91.5 | 90.9 | 89.8 | -0.7 | -1.2 | -6.5 |
| Power-generating machinery & equipment | 176 | 128.7 | 128.3 | 128.0 | -0.3 | -0.2 | -1.3 |
| Machinery specialized for particular industries | 188 | 94.6 | 93.2 | 93.6 | -1.5 | 0.4 | -3.4 |
| Metal working machinery | 6 | 99.9 | 100.4 | 100.6 | 0.5 | 0.2 | -0.4 |
| General industrial machinery | 149 | 100.9 | 101.0 | 100.5 | 0.2 | -0.5 | -2.0 |
| Office machines & data-processing machines | 234 | 96.9 | 96.7 | 96.6 | -0.1 | -0.1 | -2.3 |
| Telecommunication apparatus | 233 | 68.1 | 67.8 | 67.4 | -0.5 | -0.7 | -4.0 |
| Electrical machinery apparatus nes, electrical parts | 2,176 | 89.0 | 88.2 | 86.7 | -0.9 | -1.8 | -8.6 |
| Road vehicles | 67 | 109.3 | 109.3 | 110.4 | - | 1.0 | 2.3 |
| Miscellaneous Manufactured Articles | 748 | 97.7 | 97.9 | 97.7 | 0.2 | -0.1 | -2.6 |
| Prefab building, sanitary plumbing, lighting nes | 10 | 100.7 | 101.1 | 100.9 | 0.5 | -0.2 | -0.5 |
| Furniture, bedding, mattresses, cushions & others | 51 | 111.0 | 111.0 | 111.0 | - | 0.1 | 2.2 |
| Travel goods, handbags & similar containers | 22 | 118.0 | 118.0 | 117.9 | - | -0.1 | -0.1 |
| Articles of apparel & clothing accessories | 24 | 107.4 | 107.6 | 107.7 | 0.2 | 0.1 | 1.5 |
| Footwear | 14 | 105.9 | 105.8 | 105.8 | - | - | 0.8 |
| Professional scientific & controlling instruments | 312 | 97.5 | 97.8 | 97.4 | 0.3 | -0.4 | -5.5 |
| Photographic & optical goods nes; watches & clocks | 93 | 94.4 | 94.7 | 94.7 | 0.4 | - | -1.5 |
| Miscellaneous manufactured articles nes | 222 | 92.5 | 92.6 | 92.7 | 0.1 | 0.1 | -0.9 |

Table 3 Singapore Manufactured Products Price Index

| Section | All Items | Non-oil Items | Food & Live Animals | Beverages & Tobacco | Crude Materials | Mineral Fuels | Animal & Vegetable Oils, Fats & Waxes | Chemicals & Chemical Products | Manufactured Goods | Machinery & Transport Equipment | Misc. Manufactured Articles |
|--|---------------|---------------|---------------------|---------------------|-----------------|---------------|---------------------------------------|-------------------------------|--------------------|---------------------------------|-----------------------------|
| Weights | 10,000 | 7,782 | 266 | 54 | 7 | 2,218 | 28 | 2,335 | 439 | 3,900 | 753 |
| Index (2012=100) | | | | | | | | | | | |
| 2014 | 93.6 | 94.8 | 104.9 | 100.6 | 104.2 | 89.6 | 94.3 | 99.1 | 98.9 | 90.6 | 96.4 |
| 2015 | 85.0 | 92.7 | 103.5 | 101.4 | 104.9 | 58.3 | 90.1 | 88.1 | 98.0 | 93.7 | 93.8 |
| 2016 | 80.4 | 89.8 | 102.6 | 101.8 | 109.0 | 47.1 | 95.2 | 86.4 | 94.3 | 89.7 | 92.8 |
| 2017 | 83.4 | 90.4 | 102.5 | 97.3 | 108.8 | 58.9 | 99.9 | 90.8 | 95.9 | 87.8 | 94.6 |
| 2017 | | | | | | | | | | | |
| Mar | 84.7 | 92.5 | 103.2 | 97.5 | 108.5 | 57.2 | 102.3 | 93.3 | 95.4 | 90.7 | 93.4 |
| Apr | 84.1 | 91.4 | 103.1 | 97.5 | 108.3 | 58.6 | 103.6 | 92.9 | 95.2 | 88.7 | 93.5 |
| May | 82.8 | 90.4 | 102.7 | 97.6 | 108.1 | 56.5 | 102.7 | 89.5 | 95.0 | 88.7 | 93.2 |
| Jun | 81.7 | 89.8 | 102.5 | 97.5 | 107.8 | 53.4 | 101.8 | 88.0 | 94.8 | 88.6 | 93.0 |
| Jul | 80.8 | 88.3 | 102.0 | 97.4 | 109.6 | 54.7 | 101.2 | 87.0 | 95.4 | 86.3 | 92.2 |
| Aug | 81.7 | 89.1 | 101.6 | 97.7 | 109.3 | 55.7 | 98.4 | 89.8 | 95.5 | 85.7 | 94.8 |
| Sep | 82.9 | 89.5 | 101.6 | 97.7 | 109.3 | 59.8 | 97.1 | 90.4 | 97.0 | 85.7 | 97.0 |
| Oct | 83.0 | 89.4 | 101.7 | 96.6 | 109.1 | 60.6 | 97.0 | 89.2 | 97.2 | 86.1 | 97.1 |
| Nov | 83.9 | 89.5 | 101.9 | 96.6 | 109.2 | 64.3 | 96.6 | 89.6 | 97.4 | 86.0 | 97.0 |
| Dec | 84.6 | 90.2 | 101.9 | 96.7 | 108.9 | 64.9 | 95.4 | 93.5 | 97.1 | 85.2 | 96.9 |
| 2018 | | | | | | | | | | | |
| Jan | 84.1 | 89.0 | 102.0 | 97.8 | 115.7 | 66.9 | 91.6 | 91.4 | 97.4 | 84.1 | 96.2 |
| Feb | 84.6 | 90.2 | 102.0 | 98.4 | 115.5 | 64.9 | 90.6 | 96.8 | 97.7 | 83.3 | 96.4 |
| Mar | 85.8 | 91.9 | 102.1 | 98.1 | 115.6 | 64.5 | 89.5 | 103.6 | 97.6 | 82.5 | 96.4 |
| Percentage Change over same period of previous year (%) | | | | | | | | | | | |
| 2015 | -9.2 | -2.2 | -1.3 | 0.8 | 0.6 | -35.0 | -4.4 | -11.1 | -0.9 | 3.4 | -2.6 |
| 2016 | -5.5 | -3.1 | -0.9 | 0.4 | 3.8 | -19.2 | 5.6 | -2.0 | -3.8 | -4.3 | -1.1 |
| 2017 | 3.8 | 0.7 | -0.2 | -4.4 | -0.1 | 25.0 | 5.0 | 5.1 | 1.6 | -2.2 | 1.9 |
| 2017 | | | | | | | | | | | |
| Mar | 3.9 | -0.3 | 0.2 | -5.5 | -0.8 | 35.7 | 9.5 | -3.3 | 1.1 | 1.4 | 0.1 |
| Apr | 7.6 | 3.6 | 0.9 | -4.8 | -1.0 | 35.9 | 8.3 | 9.3 | 1.0 | 1.4 | 1.1 |
| May | 0.5 | -2.0 | 0.4 | -4.6 | -0.9 | 17.1 | 7.1 | -5.5 | 0.1 | -0.7 | 0.3 |
| Jun | 2.5 | 1.7 | 0.7 | -4.5 | -1.1 | 7.5 | 5.5 | 5.6 | -0.3 | -0.1 | 1.3 |
| Jul | 3.9 | 1.9 | 0.1 | -4.7 | 0.7 | 17.0 | 5.6 | 8.7 | 1.6 | -1.5 | 1.2 |
| Aug | 5.0 | 2.4 | -0.4 | -4.4 | 0.5 | 22.2 | 3.8 | 11.4 | 2.2 | -2.5 | 3.6 |
| Sep | 2.3 | -1.0 | -0.6 | -4.4 | 0.7 | 23.9 | 1.5 | 1.8 | 3.8 | -4.4 | 5.0 |
| Oct | 2.1 | 0.2 | -1.6 | -4.4 | 0.9 | 13.0 | 1.9 | 4.9 | 3.6 | -3.6 | 4.7 |
| Nov | 2.9 | -0.5 | -1.4 | -4.3 | 0.9 | 23.3 | -1.5 | 5.9 | 3.5 | -5.2 | 3.8 |
| Dec | -0.6 | -2.6 | -1.8 | -4.3 | 0.7 | 10.7 | -6.2 | 2.6 | 2.6 | -7.4 | 3.1 |
| 2018 | | | | | | | | | | | |
| Jan | -1.9 | -4.3 | -1.6 | 0.3 | 6.4 | 10.9 | -10.2 | -2.1 | 2.3 | -8.1 | 2.7 |
| Feb | -0.8 | -2.2 | -1.6 | 0.9 | 6.4 | 6.5 | -10.7 | 4.4 | 2.7 | -7.9 | 2.9 |
| Mar | 1.3 | -0.7 | -1.1 | 0.6 | 6.6 | 12.9 | -12.5 | 10.9 | 2.4 | -9.0 | 3.2 |

Table 4 Domestic Supply Price Index

| Section | All Items | Non-oil Items | Food & Live Animals | Beverages & Tobacco | Crude Materials | Mineral Fuels | Animal & Vegetable Oils, Fats & Waxes | Chemicals & Chemical Products | Manufactured Goods | Machinery & Transport Equipment | Misc. Manufactured Articles |
|--|-----------|---------------|---------------------|---------------------|-----------------|---------------|---------------------------------------|-------------------------------|--------------------|---------------------------------|-----------------------------|
| Weights | 10,000 | 6,300 | 327 | 44 | 59 | 3,700 | 44 | 1,181 | 668 | 3,229 | 748 |
| Index (2012=100) | | | | | | | | | | | |
| 2014 | 94.1 | 97.2 | 104.8 | 101.0 | 100.5 | 88.7 | 84.2 | 98.8 | 96.7 | 95.9 | 98.0 |
| 2015 | 79.7 | 95.9 | 101.7 | 101.9 | 96.5 | 52.1 | 74.2 | 86.2 | 94.8 | 98.6 | 98.5 |
| 2016 | 74.1 | 92.6 | 99.7 | 101.5 | 87.9 | 42.6 | 78.0 | 82.4 | 89.1 | 95.1 | 99.0 |
| 2017 | 79.4 | 93.6 | 101.6 | 99.8 | 87.1 | 55.2 | 79.9 | 87.0 | 92.5 | 94.2 | 99.6 |
| 2017 | | | | | | | | | | | |
| Mar | 79.8 | 95.0 | 101.8 | 99.9 | 86.8 | 53.8 | 82.9 | 89.2 | 92.4 | 96.0 | 100.3 |
| Apr | 79.7 | 94.2 | 101.3 | 99.3 | 86.5 | 55.1 | 80.5 | 88.4 | 91.8 | 94.8 | 100.7 |
| May | 78.6 | 93.7 | 101.4 | 99.7 | 86.9 | 52.9 | 81.4 | 86.2 | 91.8 | 94.8 | 100.1 |
| Jun | 77.0 | 93.4 | 101.3 | 99.8 | 86.6 | 49.1 | 79.0 | 84.4 | 91.6 | 94.9 | 100.0 |
| Jul | 76.6 | 92.1 | 101.1 | 99.8 | 86.9 | 50.2 | 77.8 | 83.3 | 91.4 | 93.2 | 98.9 |
| Aug | 77.4 | 92.4 | 101.1 | 100.2 | 87.0 | 51.8 | 77.2 | 85.5 | 92.2 | 92.8 | 98.8 |
| Sep | 78.6 | 92.6 | 101.9 | 100.2 | 87.2 | 54.7 | 78.1 | 86.4 | 92.9 | 92.6 | 98.8 |
| Oct | 79.5 | 93.0 | 101.5 | 99.6 | 87.5 | 56.6 | 78.0 | 86.4 | 93.8 | 93.2 | 98.9 |
| Nov | 81.0 | 93.0 | 101.7 | 99.5 | 87.6 | 60.7 | 77.0 | 86.6 | 94.0 | 93.1 | 98.8 |
| Dec | 81.0 | 92.8 | 101.8 | 99.4 | 87.4 | 60.9 | 74.0 | 88.3 | 93.8 | 92.4 | 98.1 |
| 2018 | | | | | | | | | | | |
| Jan | 81.5 | 92.2 | 100.4 | 99.9 | 88.1 | 63.3 | 74.3 | 87.8 | 94.0 | 91.5 | 97.7 |
| Feb | 80.7 | 92.2 | 100.3 | 100.1 | 88.2 | 61.2 | 74.6 | 89.2 | 94.3 | 90.9 | 97.9 |
| Mar | 80.5 | 91.9 | 98.8 | 99.9 | 88.0 | 61.0 | 73.6 | 91.1 | 94.0 | 89.8 | 97.7 |
| Percentage Change over same period of previous year (%) | | | | | | | | | | | |
| 2015 | -15.3 | -1.4 | -3.0 | 0.9 | -4.0 | -41.3 | -11.9 | -12.8 | -2.0 | 2.9 | 0.5 |
| 2016 | -6.9 | -3.4 | -2.0 | -0.4 | -8.9 | -18.2 | 5.1 | -4.4 | -6.0 | -3.6 | 0.5 |
| 2017 | 7.0 | 1.0 | 1.9 | -1.7 | -0.9 | 29.4 | 2.4 | 5.7 | 3.8 | -1.0 | 0.6 |
| 2017 | | | | | | | | | | | |
| Mar | 10.8 | 2.0 | 2.2 | -2.4 | -2.2 | 49.1 | 8.8 | 5.3 | 3.4 | 0.9 | 1.7 |
| Apr | 11.3 | 3.0 | 2.7 | -2.4 | -1.9 | 45.1 | 2.3 | 8.1 | 3.7 | 1.5 | 3.1 |
| May | 5.5 | 0.8 | 3.1 | -1.9 | -0.9 | 23.3 | 3.2 | 1.4 | 3.6 | -0.4 | 1.5 |
| Jun | 3.2 | 1.7 | 3.0 | -1.5 | -0.7 | 8.3 | 2.4 | 4.4 | 3.5 | 0.5 | 1.9 |
| Jul | 4.8 | 1.5 | 2.3 | -1.4 | -0.5 | 16.6 | 3.7 | 5.3 | 3.5 | - | 0.9 |
| Aug | 5.9 | 1.7 | 2.3 | -1.0 | 0.1 | 21.1 | -0.7 | 7.7 | 4.7 | -0.5 | 0.5 |
| Sep | 5.2 | 0.1 | 2.4 | -1.1 | 0.8 | 23.4 | -2.4 | 3.9 | 5.3 | -2.3 | -0.2 |
| Oct | 3.6 | 0.5 | 0.8 | -1.4 | 0.8 | 13.5 | -0.9 | 3.7 | 5.8 | -1.4 | -0.6 |
| Nov | 5.4 | -0.5 | 0.2 | -1.6 | 0.1 | 25.0 | -5.5 | 4.6 | 4.2 | -2.9 | -1.5 |
| Dec | 0.7 | -1.8 | -0.7 | -1.8 | -0.4 | 7.8 | -13.9 | 1.2 | 2.5 | -3.5 | -2.1 |
| 2018 | | | | | | | | | | | |
| Jan | -0.2 | -3.5 | -1.9 | -0.1 | 0.7 | 8.9 | -14.5 | -2.1 | 1.8 | -5.3 | -2.8 |
| Feb | -0.9 | -3.2 | -1.8 | 0.2 | 1.0 | 5.5 | -12.9 | -0.9 | 1.9 | -5.3 | -2.9 |
| Mar | 0.9 | -3.3 | -2.9 | - | 1.4 | 13.5 | -11.3 | 2.1 | 1.8 | -6.5 | -2.6 |

NOTATIONS

nes not elsewhere specified
- nil or negligible

NOTES

The Singapore Manufactured Products and Domestic Supply Price Indices report contains statistics that are the most recent available at the time of its preparation.

Some statistics, particularly those for the most recent time periods, are provisional and may be subject to revision in later issues.