



Singapore Manufactured Products & Domestic Supply Price Indices March 2019

**SINGAPORE MANUFACTURED PRODUCTS &
DOMESTIC SUPPLY PRICE INDICES, MARCH 2019
ISSN 2591-7447**

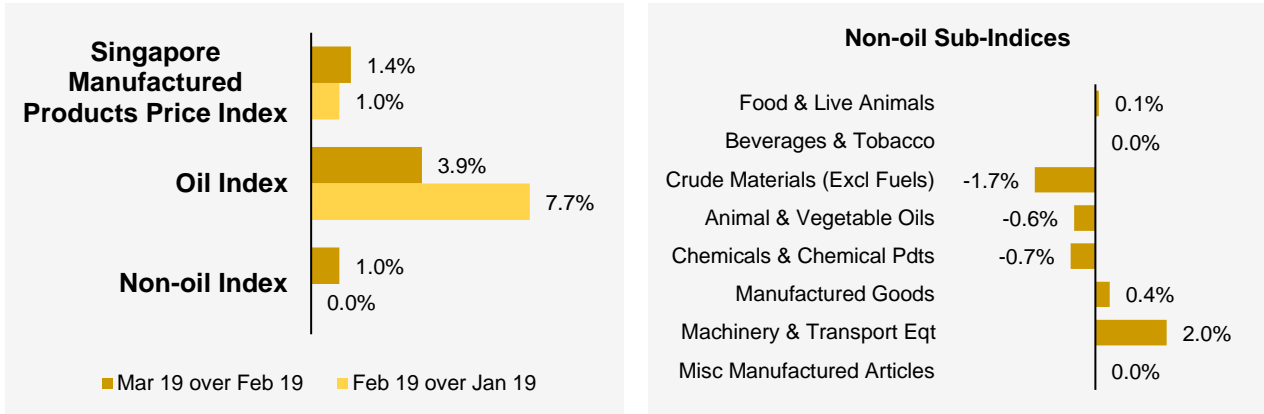
© Department of Statistics, Ministry of Trade & Industry, Republic of Singapore

Reproducing or quoting any part of this publication is permitted, provided this publication is accredited as the source. Please refer to the Statistics Singapore Website Terms of Use (<http://www.singstat.gov.sg/terms-of-use>) for more details on the conditions of use of this publication.

Statistical activities conducted by the Singapore Department of Statistics are governed by the provisions of the Statistics Act (Cap. 317). The Act guarantees the confidentiality of information collected from individuals and companies. It spells out the legislative authority and responsibility of the Chief Statistician. The Act is available in the Department's Website (www.singstat.gov.sg).

Singapore Manufactured Products Price Index (2018 = 100) March 2019

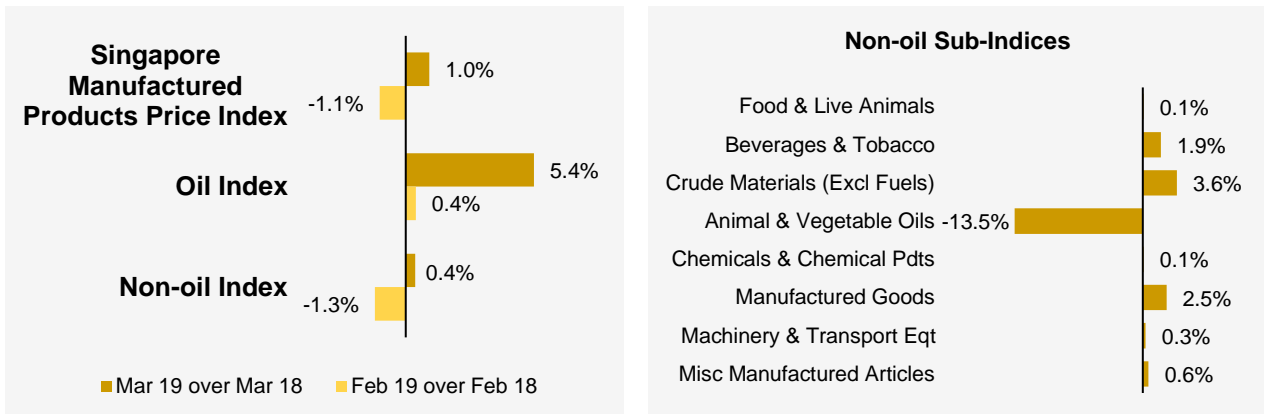
Month-on-Month Change



The Singapore Manufactured Products Price Index rose 1.4% in March 2019, extending the 1.0% gain in February 2019. The Oil index increased 3.9%, moderating from the 7.7% rise in the previous month. The Non-oil index rose 1.0% in March 2019, after remaining unchanged in February 2019.

Among the Non-oil sub-indices, increases were led by the Machinery & Transport Equipment (2.0%) index, due mainly to higher prices of integrated circuits, and the Manufactured Goods (0.4%) index. Decreases in the Crude Materials (-1.7%) index, attributed mainly to lower prices of crude rubber, and the Chemicals & Chemical Products (-0.7%) index partially moderated the increases.

Year-on-Year Change

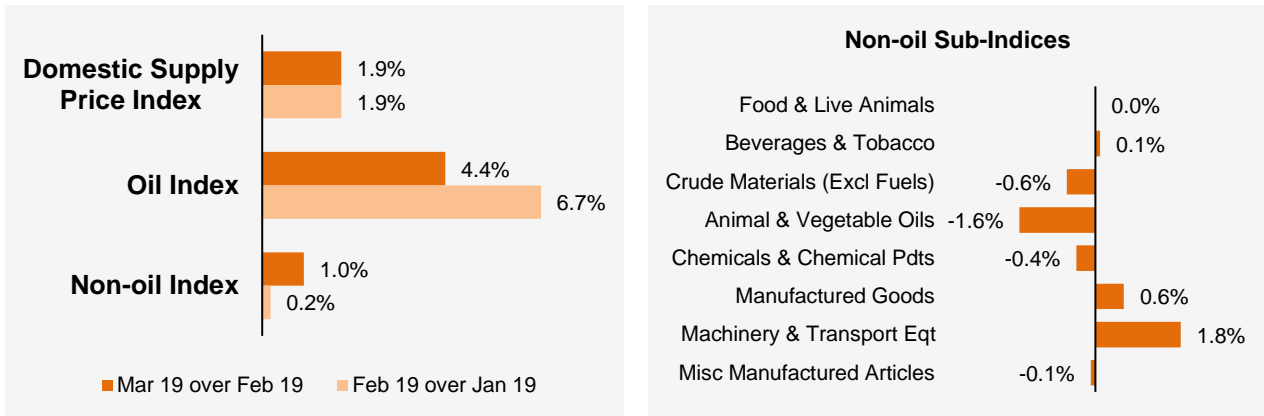


The Singapore Manufactured Products Price Index rose 1.0% in March 2019 from a year ago, in contrast to the 1.1% decline in February 2019. The Oil and Non-oil indices increased 5.4% and 0.4% respectively.

Except for the decrease in the Animals & Vegetable Oils (-13.5%) index, all other Non-oil sub-indices increased. Higher prices were registered for Crude Materials (3.6%), Manufactured Goods (2.5%), Beverages & Tobacco (1.9%), Miscellaneous Manufactured Articles (0.6%), Machinery & Transport Equipment (0.3%), Chemicals & Chemical Products (0.1%) and Food & Live Animals (0.1%).

Domestic Supply Price Index (2018 = 100) March 2019

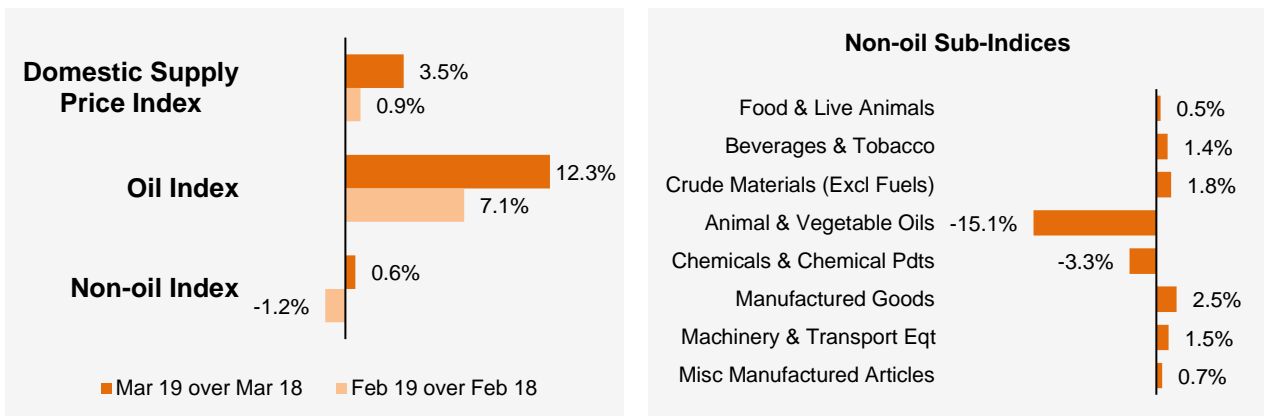
Month-on-Month Change



The Domestic Supply Price Index rose 1.9% in March 2019, after increasing 1.9% in February 2019. The Oil index increased 4.4%, extending the 6.7% gain in the previous month. The Non-oil index advanced 1.0% in March 2019, continuing the 0.2% gain in the previous month.

For the Non-oil sub-indices, increases were led by the Machinery & Transport Equipment (1.8%) index, due mainly to higher prices of integrated circuits, and the Manufactured Goods (0.6%) index. Declines in the Chemicals & Chemical Products (-0.4%) and Miscellaneous Manufactured Articles (-0.1%) indices partially moderated the gains.

Year-on-Year Change



The Domestic Supply Price Index increased 3.5% in March 2019 over the previous year, after rising 0.9% in February 2019. The Oil and Non-oil indices rose 12.3% and 0.6% respectively.

For the Non-oil sub-indices, increases in the Manufactured Goods (2.5%), Crude Materials (1.8%), Machinery & Transport Equipment (1.5%), Beverages & Tobacco (1.4%), Miscellaneous Manufactured Articles (0.7%) and Food & Live Animals (0.5%) indices were partially offset by decreases in the Animal & Vegetable Oils (-15.1%) and Chemicals & Chemical Products (-3.3%) indices.

Technical Note

The **Singapore Manufactured Products Price Index (SMPPI)** monitors price changes of locally manufactured commodities. The weights of the index are derived from the distribution of local production by commodity in 2018. Ex-factory prices are obtained from principal manufacturers of the items concerned.

The **Domestic Supply Price Index (DSPI)** is designed to measure the changes in the price level of goods manufactured locally or imported which are retained for use in the domestic economy by the government, business or household sectors. For imported products, the prices refer to those paid by importers in bringing the goods into Singapore, commonly referred to as c.i.f. prices. In the case of Singapore manufactured products, the quotations used are ex-factory prices. The weight for each commodity item is proportional to the value of its total supply or availability in the domestic market in 2018.

2018 Rebasing of the SMPPI and DSPI

The Singapore Department of Statistics (DOS) has completed the rebasing of the Singapore Manufactured Products and Domestic Supply Price Indices from base year 2012 to 2018. The rebasing exercise is conducted periodically to ensure that the 'basket' of commodities remain relevant to changing production and domestic supply patterns.

Commodity Section	SMPPI		DSPI	
	2012-based	2018-based	2012-based	2018-based
All items	10,000	10,000	10,000	10,000
Oil	2,218	1,414	3,700	2,788
Non-oil	7,782	8,586	6,300	7,212
Food & Live Animals	266	256	327	319
Beverages & Tobacco	54	31	44	30
Crude Materials (Excl Fuels)	7	56	59	85
Animal & Vegetable Oils Fats & Waxes	28	14	44	42
Chemicals & Chemical Products	2,335	2,165	1,181	1,142
Manufactured Goods	439	284	668	490
Machinery & Transport Equipment	3,900	4,897	3,229	4,302
Miscellaneous Manufactured Articles	753	883	748	802

An Information Paper on the Rebasing of Singapore Manufactured Products and Domestic Supply Price Indices (2018=100) is available on the department's website at <https://www.singstat.gov.sg/ppi#Producer-and-International-Trade-Prices>.

Index Formula

The 2018-based series is compiled using the 'modified Laspeyres' formula where the weight reference period of 2017 preceded the price reference period of 2018. The geometric mean formula has been adopted in the computation of unweighted elementary aggregate price indices. The arithmetic mean formula is applied in compiling indices at higher levels of aggregation where weights of specific sub-indices are available.

Measurement of Changes in Price Indices

Change over previous month compares the index of the month with that of the preceding month. Such comparisons measure the change in the price index between two consecutive months. They serve as useful short-term indicators of the price movements.

Change over same period of previous year measures change in the index over a twelve-month period. Such comparisons compare the movement in the price index between similar months in two consecutive years.

Index Revision

The indices may be revised when late returns and amendments received from respondents are incorporated.

Dissemination of Data

The Singapore Manufactured Products and Domestic Supply Price Indices are available on the SingStat Website (www.singstat.gov.sg/tablebuilder). Excel tables for this month's report are available at <https://www.singstat.gov.sg/publications/economy/producer-price-indices> or through the QR code below:



Singapore Manufactured Products Price Index (2018 = 100)

March 2019

Chart 1: Index

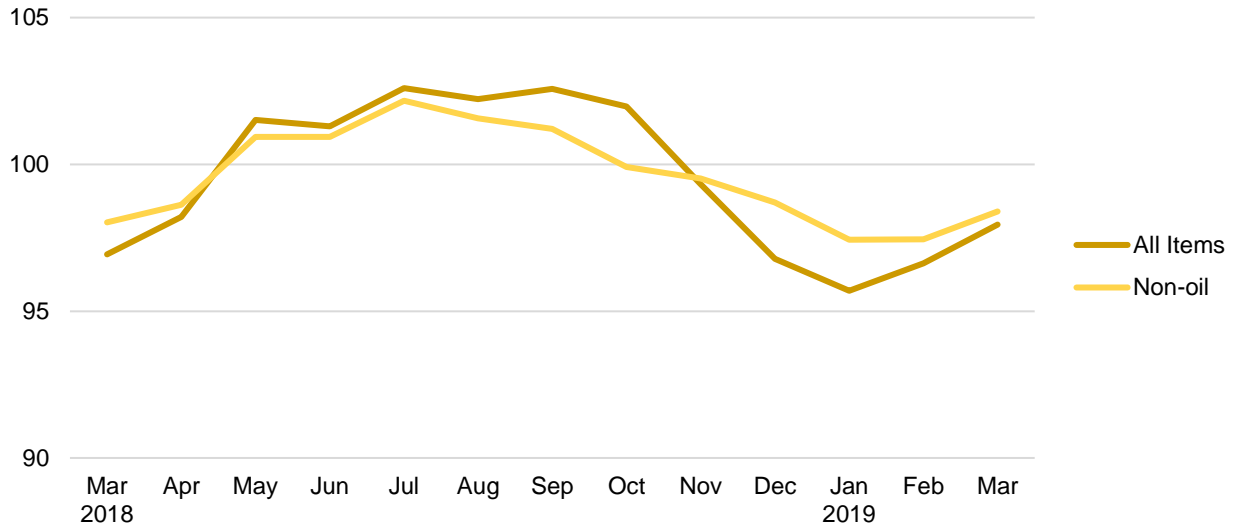


Chart 2: Month-on-month Change

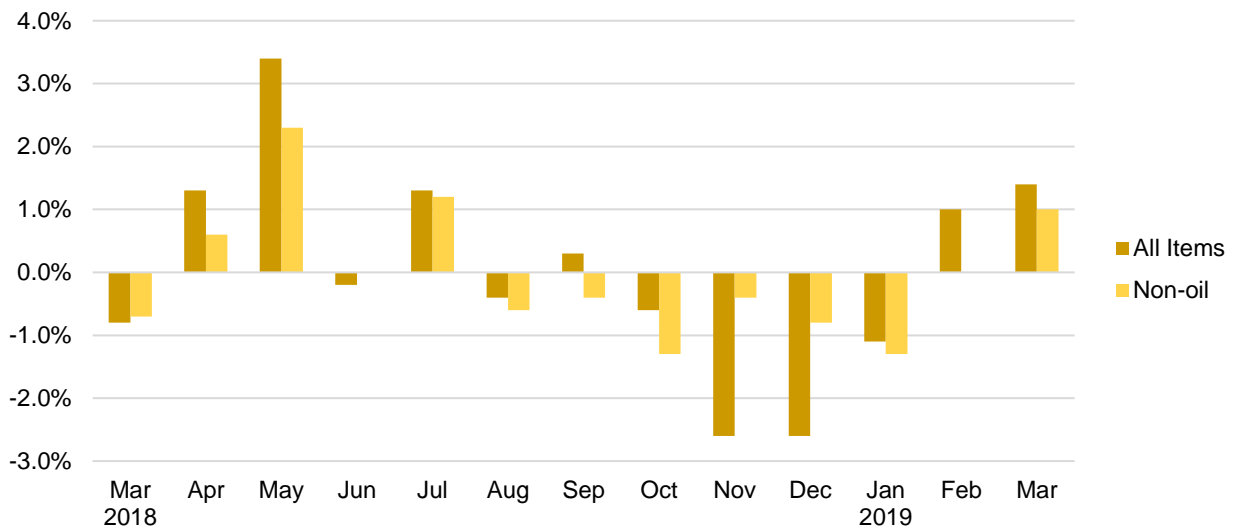
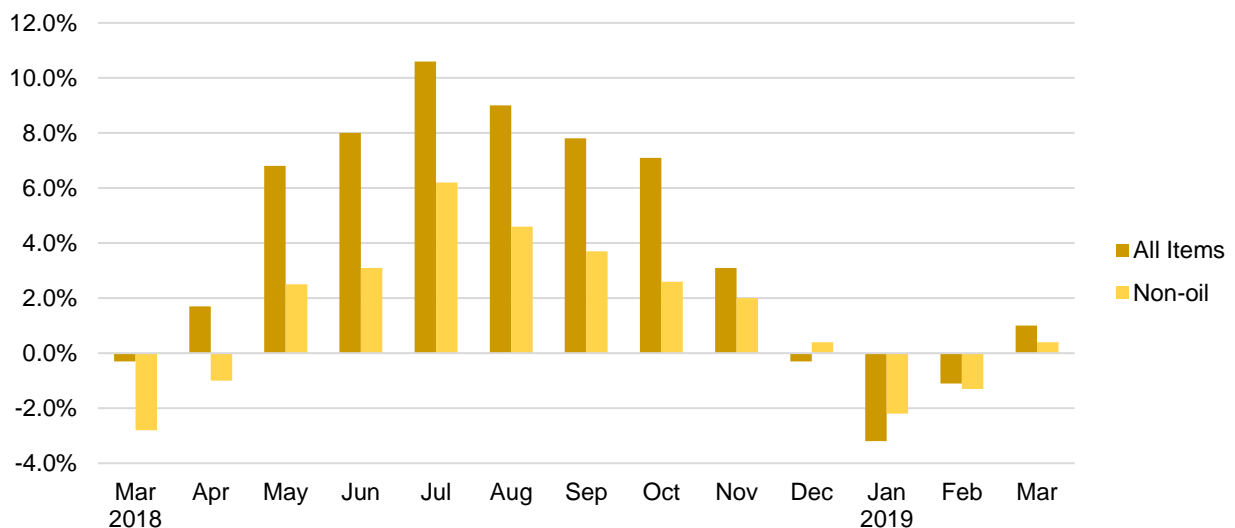


Chart 3: Year-on-year Change



Domestic Supply Price Index (2018 = 100) March 2019

Chart 4: Index

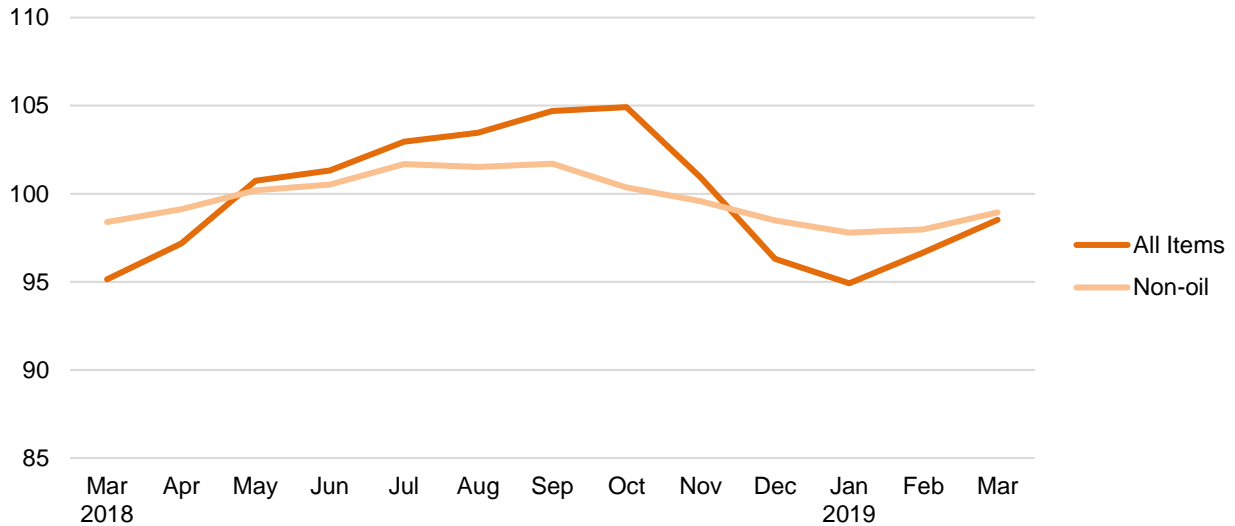


Chart 5: Month-on-month Change

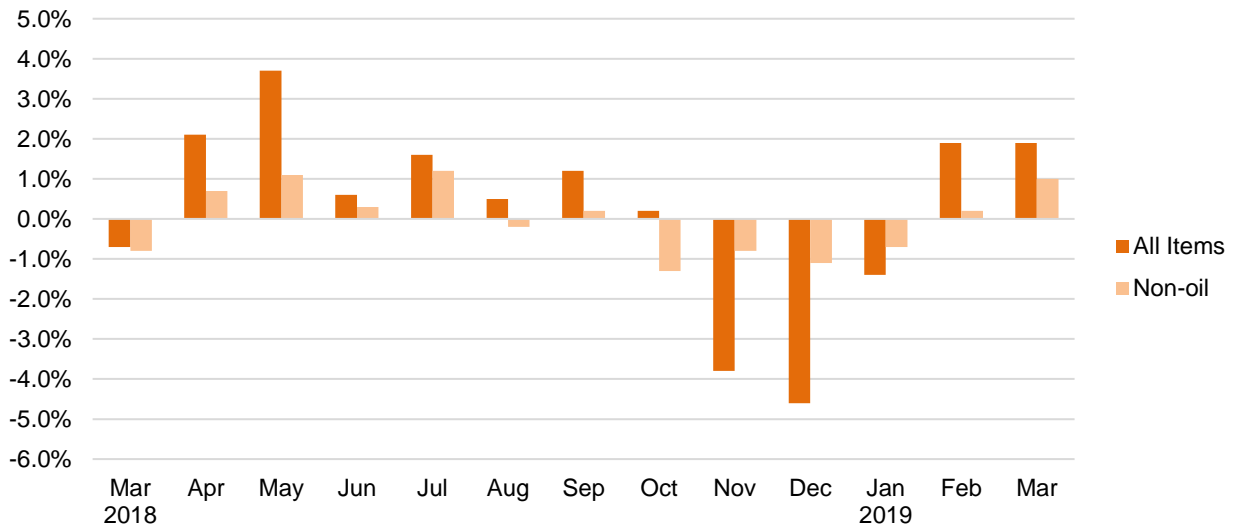


Chart 6: Year-on-year Change

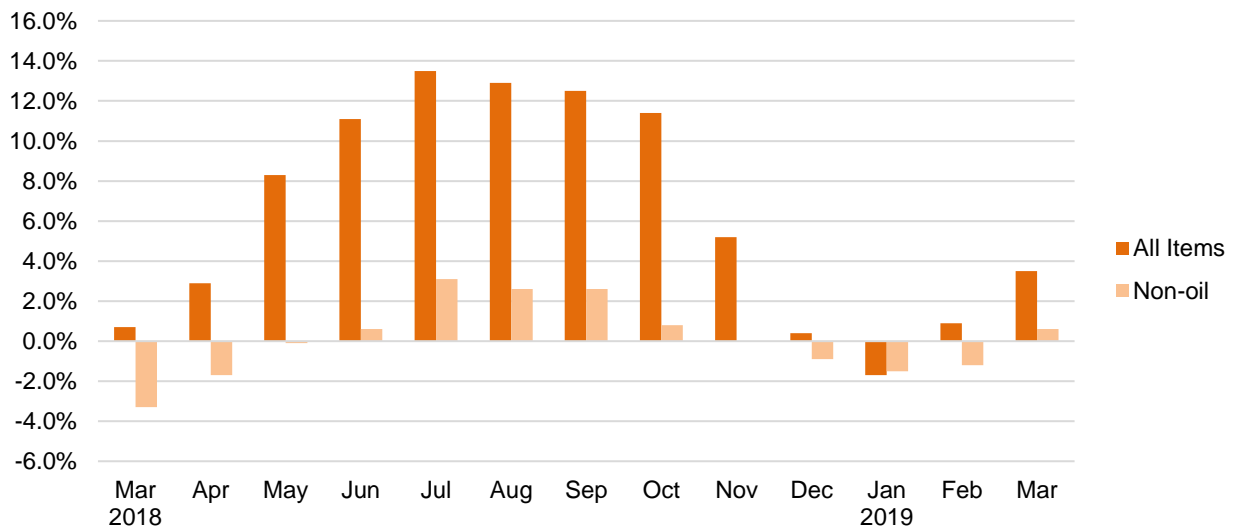


Table 1 Singapore Manufactured Products Price Index

March 2019

Commodity section / division	Weights	Index (2018=100)			% Change		
					Feb 2019	Mar 2019	Mar 2019
		Jan 2019	Feb 2019	Mar 2019	Jan 2019	Feb 2019	Mar 2018
All Items	10,000	95.7	96.6	97.9	1.0	1.4	1.0
Non-oil Items	8,586	97.4	97.4	98.4	-	1.0	0.4
Food & Live Animals	256	99.6	99.5	99.6	-0.1	0.1	0.1
Meat & meat preparations	20	102.3	102.3	102.3	-	-	1.9
Dairy products & birds' eggs	15	99.5	99.3	99.4	-0.2	0.1	0.5
Fish seafood & preparations	5	100.9	100.8	100.8	-	-	1.6
Cereals & cereal preparations	42	100.4	100.4	100.7	-	0.3	1.2
Vegetables & fruit	3	100.7	100.7	100.7	-	-	0.7
Coffee, tea, cocoa, spices & manufactures	28	97.1	97.4	97.4	0.3	-	-1.3
Animal feeding stuff (excl unmilled cereals)	6	102.5	102.4	102.4	-0.1	-	4.5
Miscellaneous food preparations	135	99.2	99.0	99.1	-0.2	-	-0.6
Beverages & Tobacco	31	101.8	101.8	101.8	-	-	1.9
Beverages	31	101.8	101.8	101.8	-	-	1.9
Crude Materials (excl fuels)	56	98.3	96.9	95.3	-1.4	-1.7	3.6
Crude rubber	50	98.0	96.4	94.4	-1.6	-2.0	3.8
Cork & wood	1	100.4	100.4	100.4	-	-	1.0
Crude fertilizers & minerals	2	108.9	108.9	108.9	-	-	9.4
Metalliferous ores & metal scrap	4	97.6	98.7	100.0	1.1	1.3	-0.5
Mineral Fuels, Lubricants & Related Materials	1,414	85.1	91.7	95.2	7.7	3.9	5.4
Petroleum & products & related materials	1,386	85.3	91.8	95.2	7.7	3.7	5.3
Gas	28	78.9	85.1	95.4	7.8	12.2	12.6
Animal & Vegetable Oils, Fats & Waxes	14	90.0	89.6	89.1	-0.5	-0.6	-13.5
Fixed vegetable fats & oils	14	90.0	89.6	89.1	-0.5	-0.6	-13.5
Chemicals & Chemical Products	2,165	97.4	97.2	96.5	-0.2	-0.7	0.1
Organic chemicals	1,012	96.1	97.0	96.2	1.0	-0.8	2.2
Inorganic chemicals	40	96.1	98.4	97.8	2.4	-0.5	-2.4
Dyeing, tanning & colouring materials	22	101.7	100.5	100.5	-1.2	-	1.9
Medicinal & pharmaceutical products	232	97.6	91.8	90.8	-6.0	-1.0	-7.4
Essential oils & perfume; toilet cleaning products	133	104.6	101.8	97.8	-2.6	-3.9	1.5
Plastics in primary forms	372	95.2	94.9	95.1	-0.3	0.2	-3.9
Plastics in non-primary forms	34	99.7	100.7	100.6	1.0	-	1.0
Chemical materials & products nes	320	100.7	101.6	101.6	0.9	-	3.6
Manufactured Goods	284	101.1	100.9	101.3	-0.2	0.4	2.5
Rubber manufactures nes	23	100.1	100.5	100.5	0.4	-	1.5
Wood & cork manufactures (excl furniture)	8	99.4	99.4	99.4	-	-	-1.5
Paper manufactures	34	101.8	101.8	101.9	-	0.1	4.4
Non-metal mineral manufactures nes	45	100.8	100.6	105.2	-0.2	4.5	5.8
Iron & steel	53	105.6	104.7	106.0	-0.8	1.3	10.5
Non-ferrous metals	20	98.3	97.7	97.5	-0.6	-0.2	-2.2
Manufactures of metals nes	99	99.5	99.5	97.8	-	-1.7	-2.2
Machinery & Transport Equipment	4,897	96.6	96.8	98.8	0.2	2.0	0.3
Power-generating machinery & equipment	8	94.1	90.5	90.5	-3.7	-	-9.2
Machinery specialized for particular industries	571	99.3	99.4	99.4	0.1	-	0.3
Metal working machinery	18	99.8	100.6	100.6	0.7	-	1.2
General industrial machinery	85	98.8	99.3	99.3	0.6	-	-0.8
Office machines & data-processing machines	880	100.1	99.6	99.9	-0.5	0.3	2.0
Telecommunication apparatus	45	93.8	96.2	96.1	2.6	-0.1	-2.1
Electrical machinery apparatus nes, electrical parts	3,271	95.2	95.6	98.4	0.4	3.0	-
Road vehicles	20	101.4	101.2	101.7	-0.1	0.4	1.9
Miscellaneous Manufactured Articles	883	100.1	99.8	99.8	-0.3	-	0.6
Furniture, bedding, mattresses, cushions & others	16	100.1	100.1	100.1	-	-	0.3
Travel goods, handbags & similar containers	1	103.8	104.4	104.7	0.6	0.3	8.7
Professional scientific & controlling instruments	516	100.9	100.6	100.6	-0.3	-	2.9
Photographic & optical goods nes; watches & clocks	48	98.8	98.7	98.7	-0.1	-	-1.5
Miscellaneous manufactured articles nes	303	98.9	98.6	98.6	-0.3	-	-2.8

Figures may not sum to total due to rounding.

Table 2 Domestic Supply Price Index

March 2019

Commodity section / division	Weights	Index (2018=100)			% Change		
					Feb 2019	Mar 2019	Mar 2019
		Jan 2019	Feb 2019	Mar 2019	Jan 2019	Feb 2019	Mar 2018
All Items	10,000	94.9	96.7	98.5	1.9	1.9	3.5
Non-oil Items	7,212	97.8	98.0	98.9	0.2	1.0	0.6
Food & Live Animals	319	100.7	99.9	99.9	-0.8	-	0.5
Live animals	10	99.7	100.1	98.5	0.4	-1.6	-1.8
Meat & meat preparations	56	99.1	98.7	97.7	-0.4	-1.1	-3.3
Dairy products & birds' eggs	43	103.1	103.4	102.4	0.3	-1.0	6.5
Fish seafood & preparations	42	101.2	100.8	101.2	-0.4	0.4	0.4
Cereals & cereal preparations	51	100.8	100.7	100.8	-0.1	0.1	2.1
Vegetables & fruit	40	102.6	99.9	100.2	-2.5	0.2	2.3
Sugar, sugar preparations & honey	13	99.2	99.3	97.7	-	-1.6	-1.7
Coffee, tea, cocoa, spices & manufactures	27	99.0	94.4	98.2	-4.6	4.1	-1.3
Animal feeding stuff (excl unmilled cereals)	3	100.5	99.5	99.2	-1.0	-0.3	-0.2
Miscellaneous food preparations	35	100.0	99.9	100.0	-0.1	0.1	-1.4
Beverages & Tobacco	30	101.3	101.2	101.3	-0.1	0.1	1.4
Beverages	28	101.3	101.2	101.3	-0.1	0.2	1.0
Tobacco & manufactures	2	101.7	101.5	101.4	-0.2	-0.1	6.0
Crude Materials (excl fuels)	85	99.2	98.6	98.0	-0.6	-0.6	1.8
Oil seeds & oleaginous fruits	3	97.2	97.1	98.3	-	1.2	0.4
Crude rubber	31	98.5	97.1	95.1	-1.4	-2.0	4.5
Cork & wood	3	103.7	103.7	104.5	-	0.7	4.9
Crude fertilizers & minerals	34	101.3	101.1	101.1	-0.2	-	2.7
Metalliferous ores & metal scrap	5	94.4	93.4	93.8	-1.1	0.5	-7.7
Crude animal & vegetable materials nes	10	95.7	96.0	96.5	0.3	0.5	-4.3
Mineral Fuels, Lubricants & Related Materials	2,788	87.5	93.3	97.4	6.7	4.4	12.3
Petroleum & products & related materials	2,669	87.3	93.4	97.4	7.1	4.3	12.2
Gas	119	92.5	90.4	96.7	-2.3	7.0	13.9
Animal & Vegetable Oils, Fats & Waxes	42	91.4	91.1	89.7	-0.3	-1.6	-15.1
Fixed vegetable fats & oils	42	91.4	91.1	89.7	-0.3	-1.6	-15.1
Chemicals & Chemical Products	1,142	95.3	95.8	95.3	0.5	-0.4	-3.3
Organic chemicals	459	88.4	89.6	89.0	1.3	-0.6	-9.9
Inorganic chemicals	54	96.6	100.5	102.2	4.0	1.7	-1.5
Dyeing, tanning & colouring materials	20	102.5	101.6	101.8	-0.9	0.3	2.9
Medicinal & pharmaceutical products	95	101.5	99.2	99.6	-2.3	0.4	0.3
Essential oils & perfume; toilet cleaning products	62	107.3	105.5	100.7	-1.7	-4.5	5.0
Plastics in primary forms	158	95.9	96.0	95.9	0.1	-0.1	-3.0
Plastics in non-primary forms	32	101.2	101.0	100.9	-0.1	-0.1	1.7
Chemical materials & products nes	263	100.3	100.9	100.8	0.6	-0.1	3.3
Manufactured Goods	490	100.0	100.9	101.5	0.9	0.6	2.5
Rubber manufactures nes	15	98.2	98.3	99.7	0.1	1.5	-0.7
Wood & cork manufactures (excl furniture)	6	99.3	99.3	99.3	-	-	-1.6
Paper manufactures	53	101.3	101.4	101.5	-	0.1	4.8
Textile manufactures	15	100.5	100.2	100.1	-0.3	-0.1	2.9
Non-metal mineral manufactures nes	123	100.4	100.3	102.2	-0.1	1.9	2.5
Iron & steel	110	99.8	104.3	104.5	4.5	0.1	5.8
Non-ferrous metals	80	98.8	98.9	99.7	0.1	0.7	-0.4
Manufactures of metals nes	86	100.2	99.7	99.2	-0.5	-0.5	0.3
Machinery & Transport Equipment	4,302	97.6	97.8	99.5	0.2	1.8	1.5
Power-generating machinery & equipment	205	105.1	104.8	104.9	-0.2	-	7.7
Machinery specialized for particular industries	189	99.8	99.8	99.8	-	-	1.7
Metal working machinery	6	100.0	99.9	99.9	-0.2	-	-0.4
General industrial machinery	90	99.6	99.9	98.7	0.4	-1.2	0.2
Office machines & data-processing machines	192	101.3	101.2	101.3	-0.1	-	4.8
Telecommunication apparatus	53	104.5	104.6	104.5	0.1	-0.1	4.2
Electrical machinery apparatus nes, electrical parts	3,456	96.4	96.7	98.9	0.3	2.3	0.8
Road vehicles	111	102.9	102.9	102.9	-	-	5.0
Miscellaneous Manufactured Articles	802	100.2	99.9	99.8	-0.3	-0.1	0.7
Prefab building, sanitary plumbing, lighting nes	7	107.0	107.0	107.0	-	-	7.0
Furniture, bedding, mattresses, cushions & others	23	100.0	100.1	99.8	-	-0.2	-0.2
Travel goods, handbags & similar containers	39	103.7	103.6	103.6	-	-	4.1
Articles of apparel & clothing accessories	25	100.9	100.6	100.6	-0.3	-	2.0
Footwear	14	100.5	100.5	100.6	-	0.1	1.4
Professional scientific & controlling instruments	409	100.5	100.2	100.1	-0.3	-	2.3
Photographic & optical goods nes; watches & clocks	75	100.4	99.6	99.7	-0.7	0.1	-0.2
Miscellaneous manufactured articles nes	211	98.5	98.3	97.9	-0.2	-0.4	-3.1

Figures may not sum to total due to rounding.

Table 3 Singapore Manufactured Products Price Index

Section	All Items	Non-oil Items	Food & Live Animals	Beverages & Tobacco	Crude Materials	Mineral Fuels	Animal & Vegetable Oils, Fats & Waxes	Chemicals & Chemical Products	Manufactured Goods	Machinery & Transport Equipment	Misc. Manufactured Articles
Weights	10,000	8,586	256	31	56	1,414	14	2,165	284	4,897	883
Index (2018=100)											
2015	97.6	101.0	100.5	102.6	91.3	82.1	107.6	89.8	100.0	109.9	96.4
2016	92.2	97.9	99.7	103.0	94.8	66.4	113.6	88.0	96.2	105.2	95.4
2017	95.8	98.6	99.5	98.4	94.7	83.0	119.3	92.5	97.8	103.0	97.2
2018	100.0	100.0	100.0	100.0	100.0	100.0	100.0	100.0	100.0	100.0	100.0
2018											
Mar	96.9	98.0	99.5	99.9	92.0	90.3	102.9	96.4	98.8	98.5	99.2
Apr	98.2	98.6	99.8	100.1	97.6	95.7	106.6	97.0	98.7	99.4	98.2
May	101.5	100.9	100.5	100.1	100.9	105.0	103.2	100.9	99.6	101.4	99.3
Jun	101.3	100.9	100.6	100.1	103.0	103.5	102.4	100.8	99.7	101.3	99.9
Jul	102.6	102.2	99.8	100.1	104.2	105.2	100.4	103.2	100.5	102.3	100.3
Aug	102.2	101.6	100.1	99.9	106.9	106.2	99.0	102.5	100.7	101.4	100.5
Sep	102.6	101.2	100.1	100.0	106.7	110.9	96.7	101.5	101.0	101.2	100.8
Oct	102.0	99.9	100.3	99.9	104.9	114.5	95.4	101.4	101.1	98.9	101.1
Nov	99.3	99.5	99.9	100.0	102.4	98.1	92.3	100.9	101.3	98.5	100.9
Dec	96.8	98.7	100.3	100.0	101.5	85.1	91.3	100.0	101.7	97.5	100.8
2019											
Jan	95.7	97.4	99.6	101.8	98.3	85.1	90.0	97.4	101.1	96.6	100.1
Feb	96.6	97.4	99.5	101.8	96.9	91.7	89.6	97.2	100.9	96.8	99.8
Mar	97.9	98.4	99.6	101.8	95.3	95.2	89.1	96.5	101.3	98.8	99.8
Percentage Change over same period of previous year (%)											
2016	-5.5	-3.1	-0.9	0.4	3.8	-19.2	5.6	-2.0	-3.8	-4.3	-1.1
2017	3.8	0.7	-0.2	-4.4	-0.1	25.0	5.0	5.1	1.6	-2.2	1.9
2018	4.4	1.4	0.5	1.6	5.6	20.5	-16.2	8.1	2.3	-2.9	2.9
2018											
Mar	-0.3	-2.8	-0.8	1.3	-2.6	12.1	-15.7	1.3	1.5	-7.4	3.4
Apr	1.7	-1.0	-0.4	1.5	3.6	15.9	-13.8	2.4	1.6	-4.5	2.2
May	6.8	2.5	0.7	1.4	7.3	32.0	-15.8	10.5	2.7	-2.6	3.7
Jun	8.0	3.1	1.0	1.4	9.8	37.7	-15.7	12.4	3.2	-2.6	4.6
Jul	10.6	6.2	0.7	1.6	9.3	36.6	-16.9	16.4	3.3	1.0	5.9
Aug	9.0	4.6	1.5	1.2	12.4	35.3	-15.7	12.0	3.4	0.9	3.2
Sep	7.8	3.7	1.4	1.2	12.1	31.7	-16.6	10.2	2.1	0.7	1.2
Oct	7.1	2.6	1.6	2.3	10.5	34.0	-17.6	11.5	1.9	-2.0	1.3
Nov	3.1	2.0	1.0	2.4	7.8	8.3	-19.9	10.4	1.9	-2.3	1.2
Dec	-0.3	0.4	1.3	2.3	7.0	-6.8	-19.8	4.9	2.6	-2.4	1.3
2019											
Jan	-3.2	-2.2	0.1	1.8	8.8	-9.6	-15.7	-1.5	2.8	-3.5	0.5
Feb	-1.1	-1.3	-0.2	1.8	8.1	0.4	-12.9	0.4	2.2	-2.7	0.4
Mar	1.0	0.4	0.1	1.9	3.6	5.4	-13.5	0.1	2.5	0.3	0.6

Table 4 Domestic Supply Price Index

Section	All Items	Non-oil Items	Food & Live Animals	Beverages & Tobacco	Crude Materials	Mineral Fuels	Animal & Vegetable Oils, Fats & Waxes	Chemicals & Chemical Products	Manu- factured Goods	Machinery & Transport Equipment	Misc. Manu- factured Articles
Weights	10,000	7,212	319	30	85	2,788	42	1,142	490	4,302	802
Index (2018=100)											
2015	94.3	102.7	101.2	101.0	109.4	75.2	106.0	94.6	99.1	107.0	100.2
2016	87.8	99.2	99.2	100.6	99.7	61.6	111.5	90.4	93.2	103.2	100.7
2017	94.0	100.2	101.0	98.9	98.8	79.7	114.1	95.5	96.8	102.2	101.3
2018	100.0	100.0	100.0	100.0	100.0	100.0	100.0	100.0	100.0	100.0	100.0
2018											
Mar	95.1	98.4	99.4	99.9	96.3	86.7	105.7	98.6	99.1	98.0	99.1
Apr	97.2	99.1	98.7	99.8	98.1	92.1	104.3	98.8	99.2	99.3	98.8
May	100.7	100.2	99.6	100.0	100.0	102.1	103.5	99.2	100.0	100.6	99.7
Jun	101.3	100.5	99.6	100.1	101.3	103.4	101.5	101.0	100.3	100.5	100.2
Jul	103.0	101.7	99.8	100.0	102.2	106.2	100.3	101.9	100.7	102.1	100.6
Aug	103.5	101.5	100.2	100.0	103.3	108.5	98.3	102.5	100.7	101.6	100.6
Sep	104.7	101.7	100.6	100.2	103.3	112.4	96.6	102.4	100.5	101.9	100.8
Oct	104.9	100.4	100.7	100.1	102.6	116.7	94.8	102.0	100.6	99.8	100.9
Nov	100.9	99.6	100.2	100.2	101.7	104.4	90.8	99.5	100.4	99.3	100.7
Dec	96.3	98.5	100.4	100.2	100.6	90.7	90.4	96.4	100.9	98.3	100.4
2019											
Jan	94.9	97.8	100.7	101.3	99.2	87.5	91.4	95.3	100.0	97.6	100.2
Feb	96.7	98.0	99.9	101.2	98.6	93.3	91.1	95.8	100.9	97.8	99.9
Mar	98.5	98.9	99.9	101.3	98.0	97.4	89.7	95.3	101.5	99.5	99.8
Percentage Change over same period of previous year (%)											
2016	-6.9	-3.4	-2.0	-0.4	-8.9	-18.2	5.1	-4.4	-6.0	-3.6	0.5
2017	7.0	1.0	1.9	-1.7	-0.9	29.4	2.4	5.7	3.8	-1.0	0.6
2018	6.4	-0.2	-1.0	1.1	1.2	25.5	-12.4	4.7	3.3	-2.1	-1.3
2018											
Mar	0.7	-3.3	-1.7	0.9	-2.1	11.7	-10.8	0.8	2.5	-5.9	-2.9
Apr	2.9	-1.7	-2.0	1.3	-0.1	15.7	-9.4	1.8	3.3	-3.5	-3.6
May	8.3	-0.1	-1.2	1.2	1.5	33.8	-11.1	4.9	4.1	-2.1	-2.2
Jun	11.1	0.6	-1.2	1.2	3.1	45.6	-10.1	9.1	4.8	-2.3	-1.5
Jul	13.5	3.1	-0.7	1.1	3.7	46.6	-9.8	11.5	5.3	1.1	-0.1
Aug	12.9	2.6	-0.3	0.7	4.7	45.1	-10.8	9.3	4.4	1.0	0.1
Sep	12.5	2.6	-0.7	0.9	4.5	42.2	-13.4	8.1	3.5	1.5	0.2
Oct	11.4	0.8	-0.2	1.4	3.4	42.8	-15.0	7.6	2.5	-1.3	0.3
Nov	5.2	-	-0.8	1.6	2.4	19.1	-17.5	4.7	2.1	-1.6	0.2
Dec	0.4	-0.9	-0.8	1.6	1.5	3.1	-14.5	-0.6	2.9	-1.9	0.5
2019											
Jan	-1.7	-1.5	0.3	1.6	4.1	-2.4	-14.6	-3.2	1.4	-2.0	1.0
Feb	0.9	-1.2	-0.5	1.5	3.4	7.1	-14.8	-3.4	1.8	-1.3	0.8
Mar	3.5	0.6	0.5	1.4	1.8	12.3	-15.1	-3.3	2.5	1.5	0.7

NOTATIONS

- nes not elsewhere specified
- nil or negligible

NOTES

The Singapore Manufactured Products and Domestic Supply Price Indices report contains statistics that are the most recent available at the time of its preparation.

Some statistics, particularly those for the most recent time periods, are provisional and may be subject to revision in later issues.