



# SINGAPORE MANUFACTURED PRODUCTS & DOMESTIC SUPPLY PRICE INDICES

October 2018

**SINGAPORE MANUFACTURED PRODUCTS &  
DOMESTIC SUPPLY PRICE INDICES, October 2018**  
**ISSN 2591-7447**

© Department of Statistics, Ministry of Trade & Industry, Republic of Singapore

Reproducing or quoting any part of this publication is permitted, provided this publication is accredited as the source. Please refer to the Statistics Singapore Website Terms of Use (<http://www.singstat.gov.sg/terms-of-use>) for more details on the conditions of use of this publication.

Statistical activities conducted by the Singapore Department of Statistics are governed by the provisions of the Statistics Act (Cap. 317). The Act guarantees the confidentiality of information collected from individuals and companies. It spells out the legislative authority and responsibility of the Chief Statistician. The Act is available in the Department's Website ([www.singstat.gov.sg](http://www.singstat.gov.sg)).

# SINGAPORE MANUFACTURED PRODUCTS PRICE INDEX (2012 = 100)

**October 2018**

## Singapore Manufactured Products Price Index

### *Change over previous month*

The Singapore Manufactured Products Price Index rose 0.7 per cent in October 2018, in contrast to the 0.2 per cent decline in September 2018. The Oil index rose 3.2 per cent, extending the 4.7 per cent gain in September 2018, due mainly to higher prices of diesel fuel & fuel oil and power kerosene. The Non-oil index was unchanged in October 2018, following the 1.4 per cent decrease in the previous month.

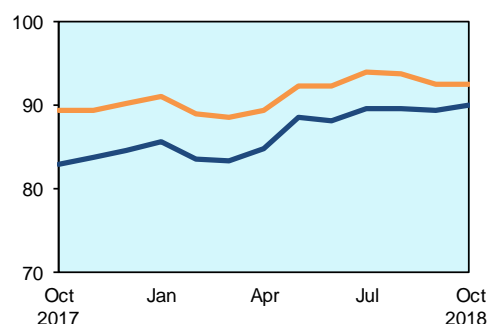
Among the Non-oil sub-indices, increases led by the Miscellaneous Manufactured Articles (0.6 per cent) and Chemicals & Chemical Products (0.1 per cent) indices were partially moderated by decreases in the Animal & Vegetable Oils (-0.6 per cent) and Machinery & Transport Equipment (-0.1 per cent) indices.

### *Change over same period of previous year*

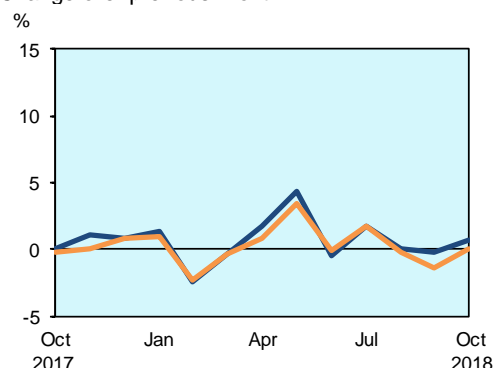
The Singapore Manufactured Products Price Index increased 8.5 per cent in October 2018 over the previous year, following the 7.9 per cent increase in September 2018. The Oil and Non-Oil indices rose 34.0 per cent and 3.5 per cent respectively.

For the Non-oil sub-indices, higher prices of Chemicals & Chemical Products (9.6 per cent), Crude Materials (5.1 per cent), Beverages & Tobacco (2.7 per cent), Food & Live Animals (1.8 per cent), Miscellaneous Manufactured Articles (1.3 per cent), Manufactured Goods (1.0 per cent) and Machinery & Transport Equipment (0.9 per cent) were partially offset by lower prices of Animal & Vegetable Oils (-19.3 per cent).

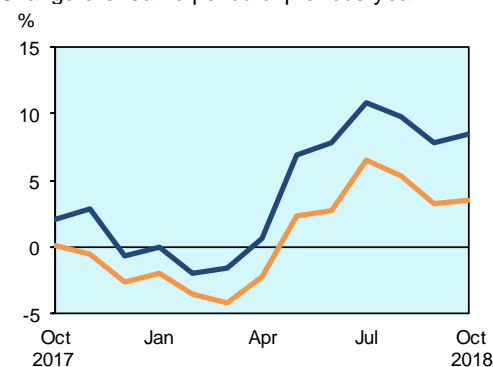
Singapore  
Manufactured Products Price Index  
(2012=100) — Overall — Non-oil



Change over previous month



Change over same period of previous year



# DOMESTIC SUPPLY PRICE INDEX (2012 = 100)

**October 2018**

## Domestic Supply Price Index

### *Change over previous month*

The Domestic Supply Price Index rose 1.5 per cent in October 2018, following the 1.0 per cent increase in the previous month. The Oil index climbed 4.6 per cent, extending the 4.5 per cent increase in September 2018, due mainly to higher prices of diesel fuel & fuel oil and crude petroleum. The Non-oil index was unchanged in October 2018, after the 0.6 per cent decline in September 2018.

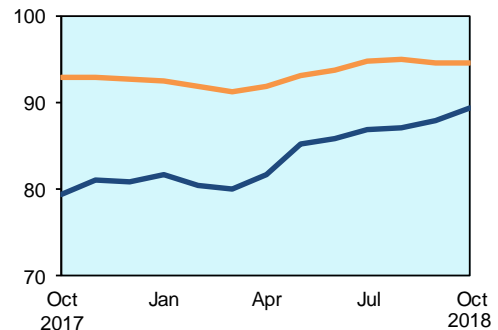
Among the Non-oil sub-indices, increases were led by the Miscellaneous Manufactured Articles (0.6 per cent) and Food & Live Animals (0.2 per cent) indices. Declines in the Animal & Vegetable Oils (-1.7 per cent) index, due mainly to lower prices of crude palm oil, and the Chemicals & Chemical Products (-0.3 per cent) index partially offset the increases.

### *Change over same period of previous year*

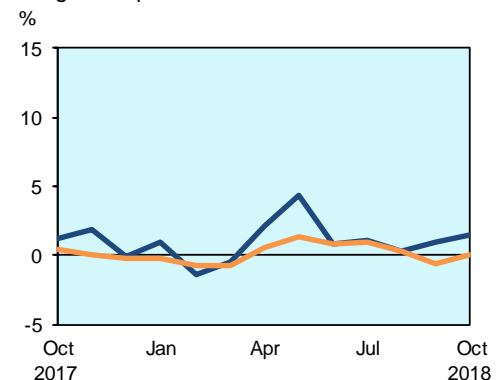
The Domestic Supply Price Index rose 12.4 per cent in October 2018 over the previous year, following the 12.1 per cent increase in September 2018. The Oil and Non-Oil indices increased 42.5 per cent and 1.7 per cent respectively in October 2018.

Among the Non-oil sub-indices, increases in the Chemicals & Chemical Products (7.4 per cent), Manufactured Goods (2.9 per cent), Beverages & Tobacco (1.8 per cent), Crude Materials (1.0 per cent), Machinery & Transport Equipment (0.3 per cent), Food & Live Animals (0.3 per cent) and Miscellaneous Manufactured Articles (0.2 per cent) indices were partially moderated by the decrease in the Animal & Vegetable Oils (-14.3 per cent) index.

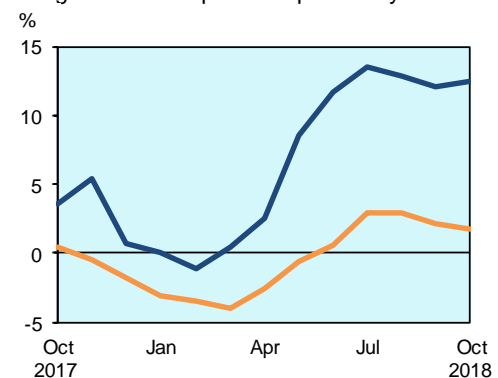
Domestic Supply Price Index (2012=100) — Overall — Non-oil



Change over previous month



Change over same period of previous year



## TECHNICAL NOTE

The *Singapore Manufactured Products Price Index (SMPPPI)* monitors price changes of locally manufactured commodities. The weights of the index are derived from the distribution of local production by commodity in 2011. Ex-factory prices are obtained from principal manufacturers of the items concerned.

The *Domestic Supply Price Index (DSPI)* is designed to measure the changes in the price level of goods manufactured locally or imported which are retained for use in the domestic economy by the government, business or household sectors. For imported products, the prices refer to those paid by importers in bringing the goods into Singapore, commonly referred to as c.i.f. prices. In the case of Singapore manufactured products, the quotations used are ex-factory prices. The weight for each commodity item is proportional to the value of its total supply or availability in the domestic market in 2011.

### Index Formula

The 2012-based series is compiled using the 'modified Laspeyres' formula where the weight reference period of 2011 preceded the price reference period of 2012. The geometric mean (GM) formula has been adopted in the computation of unweighted elementary aggregate price indices. The arithmetic mean (AM) formula is applied in compiling indices at higher levels of aggregation where weights of specific sub-indices are available.

An Information Paper on the Rebasing of Singapore Manufactured Products and Domestic Supply Price Indices (2012=100) is available on the department's website at <https://www.singstat.gov.sg/ppi#Producer-and-International-Trade-Prices>.

### Measurement of Changes in Price Indices

*Change over previous month* compares the index of the month with that of the preceding month. Such comparisons measure the change in the price index between two consecutive months. They serve as useful short-term indicators of the price movements. As the price indices are found not to be seasonal, it is not necessary for seasonal adjustment to be carried out.

*Change over same period of previous year* measures change in the index over a twelve-month period. Such comparisons compare the movement in the price index between similar months in two consecutive years.

### Index Revision

The indices may be revised when late returns and amendments received from respondents are incorporated.

### Dissemination of Data

The Singapore Manufactured Products and Domestic Supply Price Indices are available on the SingStat Website ([www.singstat.gov.sg/tablebuilder](http://www.singstat.gov.sg/tablebuilder)). Excel tables for this month's report are available at <https://www.singstat.gov.sg/publications/economy/producer-price-indices> or through the QR code below:



**Table 1 Singapore Manufactured Products Price Index**

**October 2018**

Commodity section / division	Weights	Index (2012=100)			% Change		
					Sep 2018	Oct 2018	Oct 2018
		Aug 2018	Sep 2018	Oct 2018	Aug 2018	Sep 2018	Oct 2017
<b>All Items</b>	<b>10,000</b>	<b>89.6</b>	<b>89.4</b>	<b>90.0</b>	<b>-0.2</b>	<b>0.7</b>	<b>8.5</b>
<b>Non-oil Items</b>	<b>7,782</b>	<b>93.8</b>	<b>92.5</b>	<b>92.5</b>	<b>-1.4</b>	<b>-</b>	<b>3.5</b>
Food & Live Animals	266	103.7	103.6	103.5	-0.1	-0.1	1.8
Meat & meat preparations	22	98.5	98.4	98.3	-0.1	-0.1	-1.6
Dairy products & birds' eggs	58	95.8	95.8	94.7	-	-1.1	-0.9
Fish seafood & preparations	7	116.2	116.5	116.5	0.2	-	-2.4
Cereals & cereal preparations	44	110.2	110.2	110.2	-	-	1.1
Vegetables & fruit	4	104.3	109.8	115.3	5.3	5.0	10.6
Sugar, sugar preparations & honey	2	102.9	103.4	105.5	0.5	2.0	2.3
Coffee, tea, cocoa, spices & manufactures	31	104.1	102.1	102.6	-1.9	0.5	8.2
Animal feeding stuff (excl unmilled cereals)	9	104.3	104.1	104.3	-0.1	0.2	-1.1
Miscellaneous food preparations	89	105.9	105.9	105.8	0.1	-0.1	2.8
Beverages & Tobacco	54	99.2	99.2	99.2	-0.1	-	2.7
Beverages	27	96.3	96.3	96.3	-	-	-0.1
Tobacco & manufactures	27	102.0	101.9	102.0	-0.1	0.1	5.4
Crude Materials (excl fuels)	7	114.5	114.5	114.7	-	0.1	5.1
Cork & wood	1	125.7	125.9	126.0	0.1	0.1	1.0
Crude fertilizers & minerals	3	129.7	129.7	130.0	-	0.2	10.3
Metalliferous ores & metal scrap	3	98.1	98.1	98.1	-	-	-
Mineral Fuels, Lubricants & Related Materials	2,218	75.2	78.7	81.2	4.7	3.2	34.0
Petroleum & products & related materials	2,187	75.2	78.7	81.2	4.7	3.2	34.3
Gas	31	72.9	77.4	81.8	6.2	5.6	15.4
Animal & Vegetable Oils, Fats & Waxes	28	81.8	78.7	78.2	-3.8	-0.6	-19.3
Fixed vegetable fats & oils	16	92.7	88.8	87.1	-4.2	-1.9	-27.0
Animal & vegetable oils, fats & waxes nes	12	67.6	65.6	66.6	-3.0	1.6	-1.7
Chemicals & Chemical Products	2,335	100.3	97.7	97.8	-2.6	0.1	9.6
Organic chemicals	1,402	103.0	98.2	98.1	-4.6	-0.1	13.1
Inorganic chemicals	56	84.6	85.0	84.2	0.4	-0.9	-0.2
Dyeing, tanning & colouring materials	33	93.1	93.3	94.8	0.2	1.6	2.3
Medicinal & pharmaceutical products	157	100.6	100.7	100.9	0.1	0.2	0.5
Essential oils & perfume; toilet cleaning products	64	110.9	109.2	108.9	-1.5	-0.3	-0.3
Plastics in primary forms	323	101.9	102.3	102.9	0.4	0.6	12.9
Plastics in non-primary forms	38	92.0	92.2	92.2	0.3	-	-2.5
Chemical materials & products nes	262	86.9	88.6	89.2	2.0	0.6	1.0
Manufactured Goods	439	98.2	98.2	98.2	-	0.1	1.0
Leather manufactures nes	5	140.8	140.8	140.8	-	-	5.2
Rubber manufactures nes	18	113.9	113.9	114.3	-	0.3	0.8
Wood & cork manufactures (excl furniture)	8	103.8	103.8	103.8	-	-	-
Paper manufactures	44	100.0	100.0	99.5	-0.1	-0.4	-
Textile manufactures	10	104.3	104.3	104.3	-	-	-
Non-metal mineral manufactures nes	77	97.4	97.7	97.8	0.3	0.1	1.3
Iron & steel	63	79.4	80.0	80.3	0.8	0.3	9.5
Non-ferrous metals	31	105.1	104.7	104.5	-0.4	-0.2	1.3
Manufactures of metals nes	183	100.3	100.0	100.1	-0.3	0.1	-1.0
Machinery & Transport Equipment	3,900	87.8	86.9	86.8	-1.0	-0.1	0.9
Power-generating machinery & equipment	33	93.4	89.1	89.3	-4.5	0.2	-7.6
Machinery specialized for particular industries	376	87.6	90.3	90.9	3.1	0.8	2.6
Metal working machinery	21	96.5	96.5	96.1	-	-0.4	-0.4
General industrial machinery	167	99.3	99.2	99.3	-0.1	0.1	-1.1
Office machines & data-processing machines	1,143	78.3	78.4	78.5	0.2	0.1	1.3
Telecommunication apparatus	49	98.1	98.2	98.3	-	0.1	-1.3
Electrical machinery apparatus nes, electrical parts	2,076	91.3	89.2	88.8	-2.3	-0.4	0.9
Road vehicles	35	111.8	107.8	108.0	-3.6	0.2	-7.2
Miscellaneous Manufactured Articles	753	98.2	97.8	98.4	-0.3	0.6	1.3
Furniture, bedding, mattresses, cushions & others	31	117.5	117.5	117.5	-	-	-0.5
Travel goods, handbags & similar containers	1	116.5	116.1	117.6	-0.3	1.3	4.4
Articles of apparel & clothing accessories	27	94.9	94.9	95.1	-	0.1	0.3
Professional scientific & controlling instruments	327	94.0	93.7	94.2	-0.3	0.5	1.5
Photographic & optical goods nes; watches & clocks	21	79.1	79.2	79.2	0.2	-	-2.8
Miscellaneous manufactured articles nes	346	101.8	101.3	102.0	-0.5	0.7	1.6

**Table 2 Domestic Supply Price Index**

**October 2018**

Commodity section / division	Weights	Index (2012=100)			% Change		
		Aug 2018	Sep 2018	Oct 2018	Sep 2018	Oct 2018	Oct 2018
					Aug 2018	Sep 2018	Oct 2017
<b>All Items</b>	<b>10,000</b>	<b>87.2</b>	<b>88.1</b>	<b>89.4</b>	<b>1.0</b>	<b>1.5</b>	<b>12.4</b>
<b>Non-oil Items</b>	<b>6,300</b>	<b>95.1</b>	<b>94.6</b>	<b>94.6</b>	<b>-0.6</b>	<b>-</b>	<b>1.7</b>
Food & Live Animals	327	101.6	101.6	101.8	-0.1	0.2	0.3
Live animals	14	91.7	87.2	90.6	-4.9	3.9	-5.9
Meat & meat preparations	44	99.2	98.6	98.4	-0.5	-0.2	-3.5
Dairy products & birds' eggs	72	98.2	99.3	98.9	1.1	-0.4	0.5
Fish seafood & preparations	23	111.9	112.3	113.0	0.4	0.6	2.1
Cereals & cereal preparations	49	108.0	107.9	108.3	-0.1	0.3	5.1
Vegetables & fruit	26	109.4	109.3	109.3	-	-	1.9
Sugar, sugar preparations & honey	13	80.7	80.1	82.8	-0.8	3.5	-5.4
Coffee, tea, cocoa, spices & manufactures	27	95.5	94.5	93.6	-1.1	-0.9	-4.9
Animal feeding stuff (excl unmilled cereals)	4	108.4	108.6	108.5	0.2	-0.1	0.6
Miscellaneous food preparations	55	104.5	104.8	105.1	0.2	0.3	2.3
Beverages & Tobacco	44	101.5	101.4	101.4	-0.1	-	1.8
Beverages	31	99.2	99.1	99.0	-0.1	-0.1	0.2
Tobacco & manufactures	13	107.0	106.9	107.1	-0.1	0.2	5.4
Crude Materials (excl fuels)	59	87.9	88.0	88.4	0.1	0.5	1.0
Hides, skins & furskins raw	2	85.6	86.3	87.6	0.8	1.5	0.3
Oil seeds & oleaginous fruits	1	96.1	95.9	96.2	-0.2	0.3	1.5
Crude rubber	2	98.4	98.5	99.1	0.2	0.6	14.0
Cork & wood	5	91.8	93.5	93.0	1.8	-0.5	1.8
Textile fibres & their wastes	1	98.4	98.4	98.5	-	0.1	-5.9
Crude fertilizers & minerals	31	80.9	80.9	81.3	-0.1	0.5	2.0
Metalliferous ores & metal scrap	11	93.3	92.7	94.0	-0.7	1.4	-2.1
Crude animal & vegetable materials nes	6	105.9	106.2	105.4	0.3	-0.8	-0.6
Mineral Fuels, Lubricants & Related Materials	3,700	73.8	77.1	80.6	4.5	4.6	42.5
Petroleum & products & related materials	3,527	73.1	76.5	80.0	4.7	4.6	43.5
Gas	173	86.9	87.9	92.8	1.1	5.6	27.3
Animal & Vegetable Oils, Fats & Waxes	44	69.3	67.9	66.8	-1.9	-1.7	-14.3
Fixed vegetable fats & oils	32	69.3	68.1	66.3	-1.7	-2.7	-18.2
Animal & vegetable oils, fats & waxes nes	12	69.2	67.4	68.4	-2.6	1.4	-1.5
Chemicals & Chemical Products	1,181	93.7	93.0	92.8	-0.7	-0.3	7.4
Organic chemicals	612	95.6	93.8	92.5	-1.9	-1.4	11.1
Inorganic chemicals	64	87.9	88.5	87.7	0.6	-0.9	0.5
Dyeing, tanning & colouring materials	17	89.9	89.9	91.2	-	1.5	2.9
Medicinal & pharmaceutical products	102	80.6	81.6	81.3	1.3	-0.5	3.9
Essential oils & perfume; toilet cleaning products	30	98.0	98.6	98.4	0.6	-0.2	1.4
Plastics in primary forms	92	99.0	98.8	99.2	-0.1	0.3	12.1
Plastics in non-primary forms	24	98.6	98.7	98.9	0.2	0.2	0.5
Chemical materials & products nes	240	93.1	93.7	95.9	0.7	2.3	1.9
Manufactured Goods	668	96.5	96.5	96.5	-	-	2.9
Leather manufactures nes	2	140.8	140.8	140.8	-	-	5.2
Rubber manufactures nes	18	96.3	96.4	96.7	0.1	0.3	0.4
Wood & cork manufactures (excl furniture)	7	104.2	104.2	104.2	-	-	-
Paper manufactures	67	104.9	105.2	105.1	0.3	-0.1	5.7
Textile manufactures	11	99.5	99.6	99.7	0.1	0.2	1.3
Non-metal mineral manufactures nes	130	96.9	97.1	97.2	0.1	0.1	2.0
Iron & steel	148	91.8	92.7	91.4	1.0	-1.4	9.4
Non-ferrous metals	118	91.3	90.7	91.8	-0.6	1.2	-4.6
Manufactures of metals nes	167	99.6	99.2	99.5	-0.5	0.3	3.1
Machinery & Transport Equipment	3,229	94.3	93.5	93.5	-0.9	-	0.3
Power-generating machinery & equipment	176	132.2	132.2	132.9	-	0.5	4.9
Machinery specialized for particular industries	188	95.3	95.6	95.9	0.4	0.3	2.6
Metal working machinery	6	101.3	101.3	103.3	-0.1	2.1	2.6
General industrial machinery	149	100.7	100.8	100.9	0.1	0.1	-0.3
Office machines & data-processing machines	234	98.2	98.3	98.5	0.1	0.2	0.6
Telecommunication apparatus	233	66.0	65.4	65.2	-0.9	-0.2	-5.0
Electrical machinery apparatus nes, electrical parts	2,176	92.7	91.6	91.5	-1.2	-0.1	-0.1
Road vehicles	67	113.5	110.9	110.9	-2.3	-	1.9
Miscellaneous Manufactured Articles	748	98.6	98.4	99.0	-0.2	0.6	0.2
Prefab building, sanitary plumbing, lighting nes	10	100.6	100.7	101.2	0.1	0.5	0.4
Furniture, bedding, mattresses, cushions & others	51	112.0	111.3	111.3	-0.6	-	0.5
Travel goods, handbags & similar containers	22	119.0	119.1	118.4	-	-0.5	0.4
Articles of apparel & clothing accessories	24	108.1	109.6	109.8	1.4	0.1	2.6
Footwear	14	106.3	106.1	106.1	-0.2	-	0.9
Professional scientific & controlling instruments	312	100.4	100.0	100.7	-0.4	0.8	1.1
Photographic & optical goods nes; watches & clocks	93	95.5	95.8	95.5	0.2	-0.2	0.5
Miscellaneous manufactured articles nes	222	90.8	90.6	91.7	-0.2	1.2	-1.9

**Table 3 Singapore Manufactured Products Price Index**

Section	All Items	Non-oil Items	Food & Live Animals	Beverages & Tobacco	Crude Materials	Mineral Fuels	Animal & Vegetable Oils, Fats & Waxes	Chemicals & Chemical Products	Manufactured Goods	Machinery & Transport Equipment	Misc. Manufactured Articles
Weights	<b>10,000</b>	<b>7,782</b>	266	54	7	2,218	28	2,335	439	3,900	753
<b>Index (2012=100)</b>											
2014	<b>93.6</b>	<b>94.8</b>	104.9	100.6	104.2	89.6	94.3	99.1	98.9	90.6	96.4
2015	<b>85.0</b>	<b>92.7</b>	103.5	101.4	104.9	58.3	90.1	88.1	98.0	93.7	93.8
2016	<b>80.4</b>	<b>89.8</b>	102.6	101.8	109.0	47.1	95.2	86.4	94.3	89.7	92.8
2017	<b>83.4</b>	<b>90.4</b>	102.5	97.3	108.8	58.9	99.9	90.8	95.9	87.8	94.6
2017											
Oct	<b>83.0</b>	<b>89.4</b>	101.7	96.6	109.1	60.6	97.0	89.2	97.2	86.1	97.1
Nov	<b>83.9</b>	<b>89.5</b>	101.9	96.6	109.2	64.3	96.6	89.6	97.4	86.0	97.0
Dec	<b>84.6</b>	<b>90.2</b>	101.9	96.7	108.9	64.9	95.4	93.5	97.1	85.2	96.9
2018											
Jan	<b>85.7</b>	<b>91.1</b>	102.0	97.8	115.7	66.9	91.6	98.6	97.4	84.1	96.2
Feb	<b>83.7</b>	<b>89.0</b>	102.0	98.4	115.5	64.9	90.6	92.8	97.7	83.3	96.4
Mar	<b>83.3</b>	<b>88.7</b>	102.1	98.1	115.6	64.5	89.5	92.8	97.7	82.6	96.3
Apr	<b>84.8</b>	<b>89.4</b>	102.1	98.9	115.2	68.4	89.8	93.8	97.6	83.5	96.2
May	<b>88.5</b>	<b>92.4</b>	102.6	99.0	115.4	74.8	89.1	101.9	98.0	84.4	97.2
Jun	<b>88.1</b>	<b>92.3</b>	102.9	99.0	114.8	73.3	83.3	99.0	98.5	86.0	96.9
Jul	<b>89.6</b>	<b>94.0</b>	103.5	99.2	114.6	74.3	80.5	102.6	98.2	87.0	97.5
Aug	<b>89.6</b>	<b>93.8</b>	103.7	99.2	114.5	75.2	81.8	100.3	98.2	87.8	98.2
Sep	<b>89.4</b>	<b>92.5</b>	103.6	99.2	114.5	78.7	78.7	97.7	98.2	86.9	97.8
Oct	<b>90.0</b>	<b>92.5</b>	103.5	99.2	114.7	81.2	78.2	97.8	98.2	86.8	98.4
<b>Percentage Change over same period of previous year (%)</b>											
2015	<b>-9.2</b>	<b>-2.2</b>	-1.3	0.8	0.6	-35.0	-4.4	-11.1	-0.9	3.4	-2.6
2016	<b>-5.5</b>	<b>-3.1</b>	-0.9	0.4	3.8	-19.2	5.6	-2.0	-3.8	-4.3	-1.1
2017	<b>3.8</b>	<b>0.7</b>	-0.2	-4.4	-0.1	25.0	5.0	5.1	1.6	-2.2	1.9
2017											
Oct	<b>2.1</b>	<b>0.2</b>	-1.6	-4.4	0.9	13.0	1.9	4.9	3.6	-3.6	4.7
Nov	<b>2.9</b>	<b>-0.5</b>	-1.4	-4.3	0.9	23.3	-1.5	5.9	3.5	-5.2	3.8
Dec	<b>-0.6</b>	<b>-2.6</b>	-1.8	-4.3	0.7	10.7	-6.2	2.6	2.6	-7.4	3.1
2018											
Jan	-	<b>-2.0</b>	-1.6	0.3	6.4	10.9	-10.2	5.6	2.3	-8.1	2.7
Feb	<b>-1.9</b>	<b>-3.5</b>	-1.6	0.9	6.4	6.5	-10.7	0.1	2.7	-7.9	2.9
Mar	<b>-1.6</b>	<b>-4.2</b>	-1.1	0.6	6.6	12.9	-12.5	-0.6	2.5	-8.9	3.1
Apr	<b>0.7</b>	<b>-2.2</b>	-1.1	1.4	6.4	16.7	-13.2	0.9	2.4	-5.8	2.8
May	<b>6.9</b>	<b>2.3</b>	-0.1	1.4	6.8	32.5	-13.2	13.8	3.2	-4.9	4.4
Jun	<b>7.8</b>	<b>2.8</b>	0.4	1.5	6.5	37.4	-18.2	12.5	3.9	-2.9	4.3
Jul	<b>10.9</b>	<b>6.5</b>	1.5	1.9	4.6	36.0	-20.4	17.9	3.0	0.9	5.7
Aug	<b>9.8</b>	<b>5.3</b>	2.1	1.6	4.8	34.9	-16.8	11.8	2.8	2.4	3.6
Sep	<b>7.9</b>	<b>3.3</b>	2.0	1.5	4.7	31.7	-18.9	8.1	1.3	1.5	0.9
Oct	<b>8.5</b>	<b>3.5</b>	1.8	2.7	5.1	34.0	-19.3	9.6	1.0	0.9	1.3



**Table 4 Domestic Supply Price Index**

Section	All Items	Non-oil Items	Food & Live Animals	Beverages & Tobacco	Crude Materials	Mineral Fuels	Animal & Vegetable Oils, Fats & Waxes	Chemicals & Chemical Products	Manufactured Goods	Machinery & Transport Equipment	Misc. Manufactured Articles
Weights	<b>10,000</b>	<b>6,300</b>	327	44	59	3,700	44	1,181	668	3,229	748
<b>Index (2012=100)</b>											
2014	<b>94.1</b>	<b>97.2</b>	104.8	101.0	100.5	88.7	84.2	98.8	96.7	95.9	98.0
2015	<b>79.7</b>	<b>95.9</b>	101.7	101.9	96.5	52.1	74.2	86.2	94.8	98.6	98.5
2016	<b>74.1</b>	<b>92.6</b>	99.7	101.5	87.9	42.6	78.0	82.4	89.1	95.1	99.0
2017	<b>79.4</b>	<b>93.6</b>	101.6	99.8	87.1	55.2	79.9	87.0	92.5	94.2	99.6
2017											
Oct	<b>79.5</b>	<b>93.0</b>	101.5	99.6	87.5	56.6	78.0	86.4	93.8	93.2	98.9
Nov	<b>81.0</b>	<b>93.0</b>	101.7	99.5	87.6	60.7	77.0	86.6	94.0	93.1	98.8
Dec	<b>81.0</b>	<b>92.8</b>	101.8	99.4	87.4	60.9	74.0	88.3	93.8	92.4	98.1
2018											
Jan	<b>81.8</b>	<b>92.6</b>	100.4	99.9	88.1	63.3	74.3	90.0	94.0	91.5	97.7
Feb	<b>80.6</b>	<b>92.0</b>	100.3	100.1	88.2	61.2	74.6	88.0	94.3	90.9	97.9
Mar	<b>80.1</b>	<b>91.3</b>	98.8	99.9	88.0	61.2	73.5	87.8	94.3	89.8	97.7
Apr	<b>81.8</b>	<b>91.8</b>	98.8	100.4	88.2	64.8	73.4	88.6	94.6	90.6	97.8
May	<b>85.3</b>	<b>93.1</b>	99.7	100.6	88.7	72.1	73.2	92.3	95.8	91.3	98.3
Jun	<b>86.0</b>	<b>93.9</b>	99.9	100.8	89.1	72.5	71.4	92.7	96.3	92.6	98.1
Jul	<b>86.9</b>	<b>94.8</b>	101.2	101.5	88.3	73.5	69.6	93.9	96.5	93.7	98.4
Aug	<b>87.2</b>	<b>95.1</b>	101.6	101.5	87.9	73.8	69.3	93.7	96.5	94.3	98.6
Sep	<b>88.1</b>	<b>94.6</b>	101.6	101.4	88.0	77.1	67.9	93.0	96.5	93.5	98.4
Oct	<b>89.4</b>	<b>94.6</b>	101.8	101.4	88.4	80.6	66.8	92.8	96.5	93.5	99.0
<b>Percentage Change over same period of previous year (%)</b>											
2015	<b>-15.3</b>	<b>-1.4</b>	-3.0	0.9	-4.0	-41.3	-11.9	-12.8	-2.0	2.9	0.5
2016	<b>-6.9</b>	<b>-3.4</b>	-2.0	-0.4	-8.9	-18.2	5.1	-4.4	-6.0	-3.6	0.5
2017	<b>7.0</b>	<b>1.0</b>	1.9	-1.7	-0.9	29.4	2.4	5.7	3.8	-1.0	0.6
2017											
Oct	<b>3.6</b>	<b>0.5</b>	0.8	-1.4	0.8	13.5	-0.9	3.7	5.8	-1.4	-0.6
Nov	<b>5.4</b>	<b>-0.5</b>	0.2	-1.6	0.1	25.0	-5.5	4.6	4.2	-2.9	-1.5
Dec	<b>0.7</b>	<b>-1.8</b>	-0.7	-1.8	-0.4	7.8	-13.9	1.2	2.5	-3.5	-2.1
2018											
Jan	<b>0.1</b>	<b>-3.1</b>	-1.9	-0.1	0.7	8.9	-14.5	0.4	1.8	-5.3	-2.8
Feb	<b>-1.1</b>	<b>-3.5</b>	-1.8	0.2	1.0	5.5	-12.9	-2.2	1.9	-5.3	-2.9
Mar	<b>0.5</b>	<b>-4.0</b>	-2.9	-	1.4	13.9	-11.3	-1.6	2.1	-6.5	-2.7
Apr	<b>2.6</b>	<b>-2.5</b>	-2.5	1.1	2.0	17.5	-8.9	0.2	3.1	-4.5	-2.9
May	<b>8.6</b>	<b>-0.6</b>	-1.6	0.9	2.0	36.4	-10.1	7.1	4.4	-3.7	-1.8
Jun	<b>11.7</b>	<b>0.6</b>	-1.3	1.1	2.8	47.6	-9.7	9.8	5.2	-2.5	-1.9
Jul	<b>13.5</b>	<b>2.9</b>	0.1	1.8	1.6	46.5	-10.5	12.7	5.6	0.6	-0.5
Aug	<b>12.8</b>	<b>3.0</b>	0.5	1.3	1.1	42.5	-10.2	9.6	4.6	1.7	-0.2
Sep	<b>12.1</b>	<b>2.1</b>	-0.3	1.2	0.9	40.8	-13.0	7.7	3.9	0.9	-0.3
Oct	<b>12.4</b>	<b>1.7</b>	0.3	1.8	1.0	42.5	-14.3	7.4	2.9	0.3	0.2

### **NOTATIONS**

nes            not elsewhere specified  
-                nil or negligible

### **NOTES**

The Singapore Manufactured Products and Domestic Supply Price Indices report contains statistics that are the most recent available at the time of its preparation.

Some statistics, particularly those for the most recent time periods, are provisional and may be subject to revision in later issues.