



# Singapore Manufactured Products & Domestic Supply Price Indices October 2020

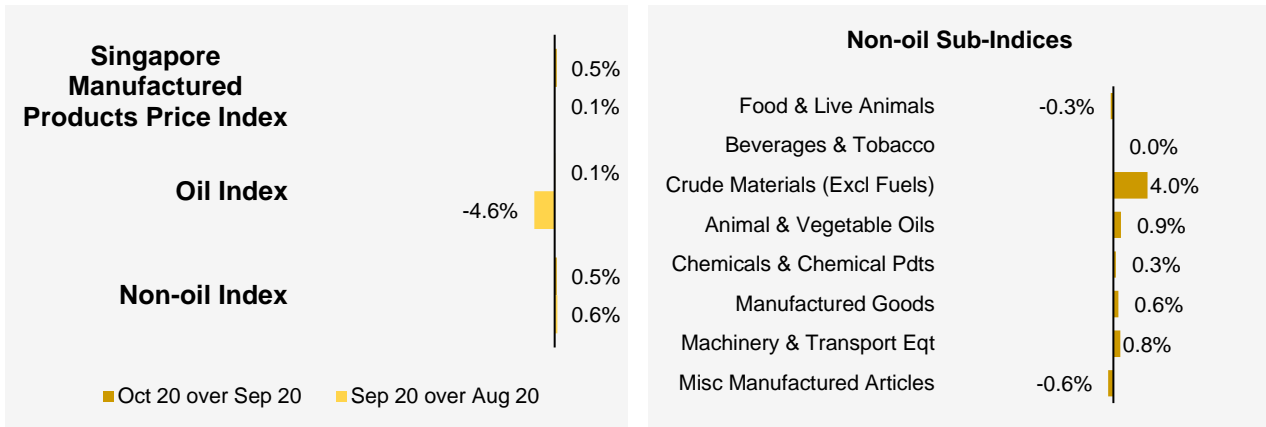
**SINGAPORE MANUFACTURED PRODUCTS &  
DOMESTIC SUPPLY PRICE INDICES, October 2020  
ISSN 2591-7447**

**© Department of Statistics, Ministry of Trade & Industry, Republic of Singapore**

Reproducing or quoting any part of this publication is permitted, provided this publication is accredited as the source. Please refer to the SingStat Website Terms of Use (<http://www.singstat.gov.sg/terms-of-use>) for more details on the conditions of use of this publication.

# Singapore Manufactured Products Price Index (2018 = 100) October 2020

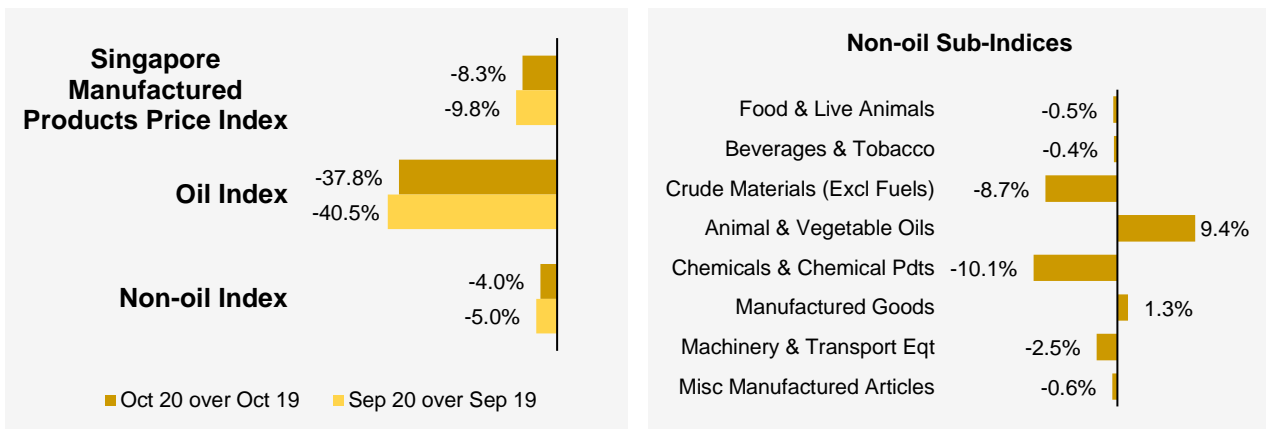
## Month-on-Month Change



The Singapore Manufactured Products Price Index rose 0.5% in October 2020, following the 0.1% increase in September 2020. The Oil index rose 0.1%, in contrast to the 4.6% decrease in the previous month. The Non-oil index rose 0.5%, following the 0.6% increase in September 2020.

For the Non-oil sub-indices, the increases led by the Machinery & Transport Equipment (0.8%) and Chemicals & Chemical Products (0.3%) indices were partially moderated by the declines in the Miscellaneous Manufactured Articles (-0.6%) and Food & Live Animals (-0.3%) indices.

## Year-on-Year Change

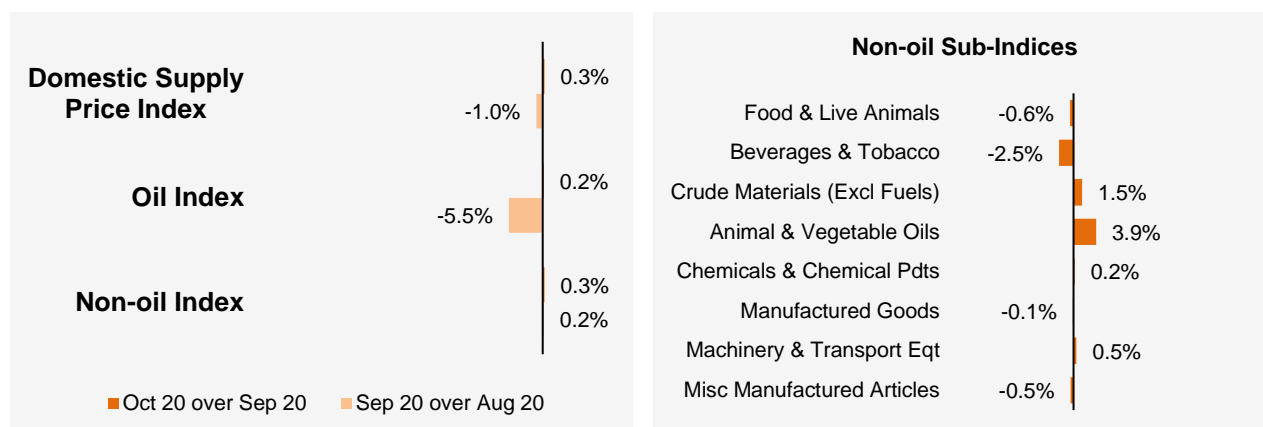


The Singapore Manufactured Products Price Index fell 8.3% in October 2020 from a year ago, following the 9.8% decrease in September 2020. The Oil and Non-oil indices fell 37.8% and 4.0% respectively.

For the Non-oil sub-indices, lower prices of Chemicals & Chemical Products (-10.1%), Crude Material (-8.7%), Machinery & Transport Equipment (-2.5%), Miscellaneous Manufactured Articles (-0.6%), Food & Live Animals (-0.5%) and Beverages & Tobacco (-0.4%) were partially offset by higher prices of Animal & Vegetable Oils (9.4%) and Manufactured Goods (1.3%).

## Domestic Supply Price Index (2018 = 100) October 2020

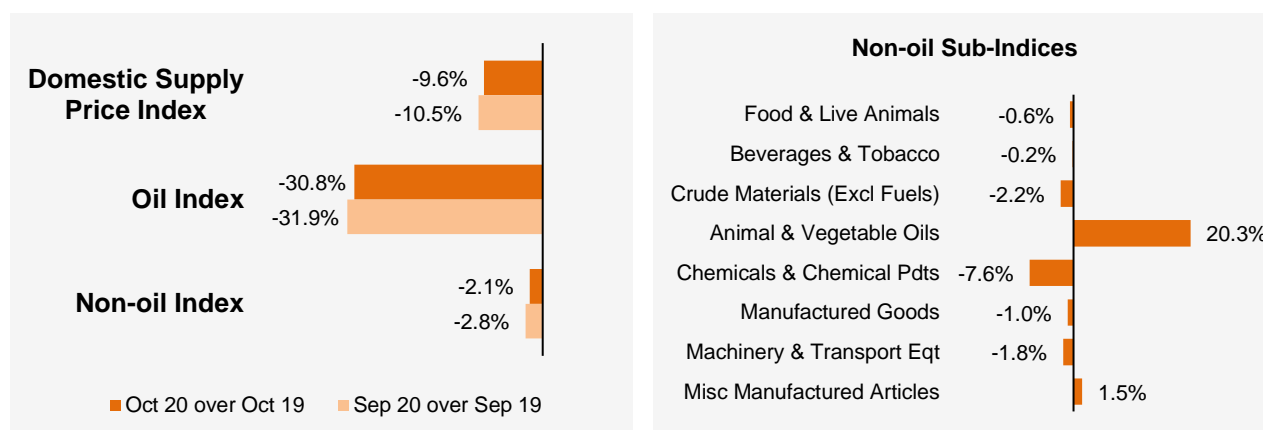
### Month-on-Month Change



The Domestic Supply Price Index rose 0.3% in October 2020, in contrast to the 1.0% decrease in September 2020. The Oil index increased 0.2%, against the 5.5% decrease in the previous month. The Non-oil index rose 0.3%, following the 0.2% increase in September 2020.

Among the Non-oil sub-indices, the increases led by the Machinery & Transport Equipment (0.5%) and Chemicals & Chemical Products (0.2%) indices were partially moderated by declines led by the Food & Live Animals (-0.6%) and Miscellaneous Manufactured Articles (-0.5%) indices.

### Year-on-Year Change



The Domestic Supply Price Index fell 9.6% in October 2020 from a year ago, following the 10.5% decrease in September 2020. The Oil and Non-oil indices declined 30.8% and 2.1% respectively.

For the Non-oil sub-indices, lower prices of Chemicals & Chemical Products (-7.6%), Crude Materials (-2.2%), Machinery & Transport Equipment (-1.8%), Manufactured Goods (-1.0%), Food & Live Animals (-0.6%) and Beverages & Tobacco (-0.2%) were partially offset by higher prices of Animal & Vegetable Oils (20.3%) and Miscellaneous Manufactured Articles (1.5%).

## Technical Note

The **Singapore Manufactured Products Price Index (SMPPI)** monitors price changes of locally manufactured commodities. The weights of the index are derived from the distribution of local production by commodity in 2018. Ex-factory prices are obtained from principal manufacturers of the items concerned.

The **Domestic Supply Price Index (DSPI)** is designed to measure the changes in the price level of goods manufactured locally or imported which are retained for use in the domestic economy by the government, business or household sectors. For imported products, the prices refer to those paid by importers in bringing the goods into Singapore, commonly referred to as c.i.f. prices. In the case of Singapore manufactured products, the quotations used are ex-factory prices. The weight for each commodity item is proportional to the value of its total supply or availability in the domestic market in 2018.

### Index Formula

The 2018-based series is compiled using the 'modified Laspeyres' formula where the weight reference period of 2017 preceded the price reference period of 2018. The geometric mean formula has been adopted in the computation of unweighted elementary aggregate price indices. The arithmetic mean formula is applied in compiling indices at higher levels of aggregation where weights of specific sub-indices are available.

### Measurement of Changes in Price Indices

*Change over previous month* compares the index of the month with that of the preceding month. Such comparisons measure the change in the price index between two consecutive months. They serve as useful short-term indicators of the price movements.

*Change over same period of previous year* measures change in the index over a twelve-month period. Such comparisons compare the movement in the price index between similar months in two consecutive years.

### Linking the Old 2012-Based Price Index Series to the New 2018-Based Price Index Series

The SMPPI and DSPI have been rebased from base year 2012 to base year 2018. To facilitate comparison of the historical price indices across base years, the old 2012-based series are linked to the new 2018-based series by re-scaling them via a Linked Coefficient. The Linked Coefficient is the ratio of the annual 2018-based index in 2018 to the annual 2012-based index in 2018.

Example : Linking the old Iron & Steel Index series for SMPPI prior to 2018, to the 2018-based Iron & Steel Index (2018=100)

1) Calculate the linked coefficient

Year	Iron & Steel Index (2012=100)	Iron & Steel Index (2018=100)	Linked Coefficient
2018	78.0	100.0	$100.0 \div 78.0 = 1.282$

2) Re-scaling the old series to the 2018-based series using the Linked Coefficient

Year	Month	Iron & Steel Index (2012=100)	Iron & Steel Index (2018=100)
2016	Dec	70.8	$70.8 \times 1.282 = 90.8$
2017	Jan	71.4	$71.4 \times 1.282 = 91.5$

### Linking Method for Maintaining the Old Index Reference Period

To continue the old 2012-based index series going forward in time, re-scale the new 2018-based index series to the old base year 2012 level, via a Linked Coefficient. The Linked Coefficient is the ratio of the annual 2012-based index in 2018 to the annual 2018-based index in 2018.

Example : Linking the new 2018-based Iron & Steel Index series for SMPPI to the 2012-based Iron & Steel Index (2012=100)

1) Calculate the linked coefficient

Year	Iron & Steel Index (2018=100)	Iron & Steel Index (2012=100)	Linked Coefficient
2018	100.0	78.0	$78.0 \div 100.0 = 0.780$

2) Re-scaling the new series to the 2012-based series using the Linked Coefficient

Year	Month	Iron & Steel Index (2018=100)	Iron & Steel Index (2012=100)
2019	Jan	105.6	$105.6 \times 0.780 = 82.4$
2019	Feb	104.7	$104.7 \times 0.780 = 81.7$

### Index Revision

The indices may be revised when late returns and amendments received from respondents are incorporated.

### Dissemination of Data

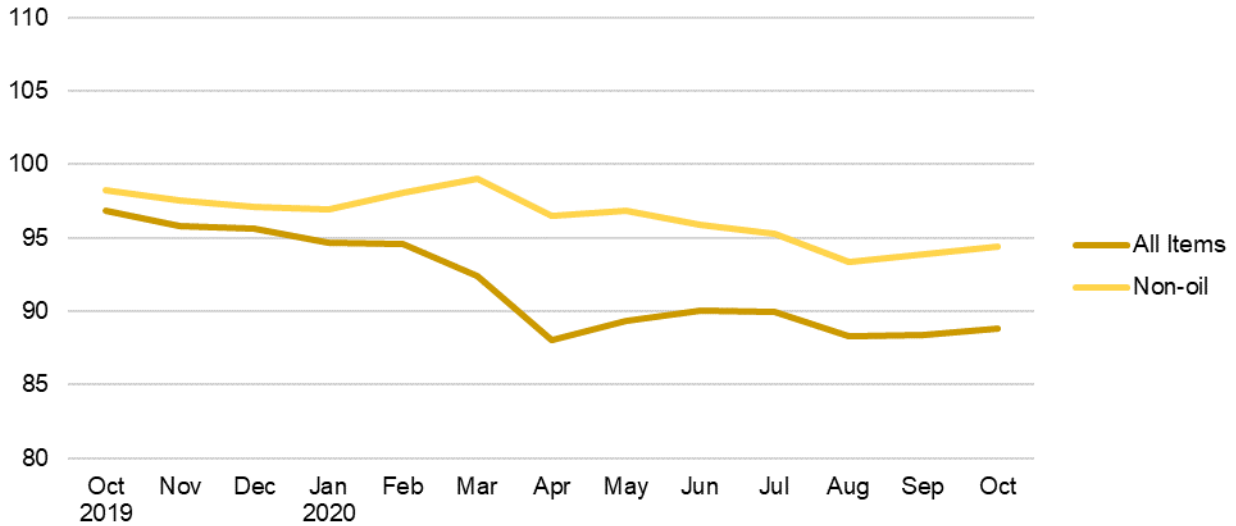
The Singapore Manufactured Products and Domestic Supply Price Indices are available on the SingStat Website ([www.singstat.gov.sg/tablebuilder](http://www.singstat.gov.sg/tablebuilder)). Excel tables for this month's report are available at <https://www.singstat.gov.sg/publications/economy/producer-price-indices> or through the QR code below:



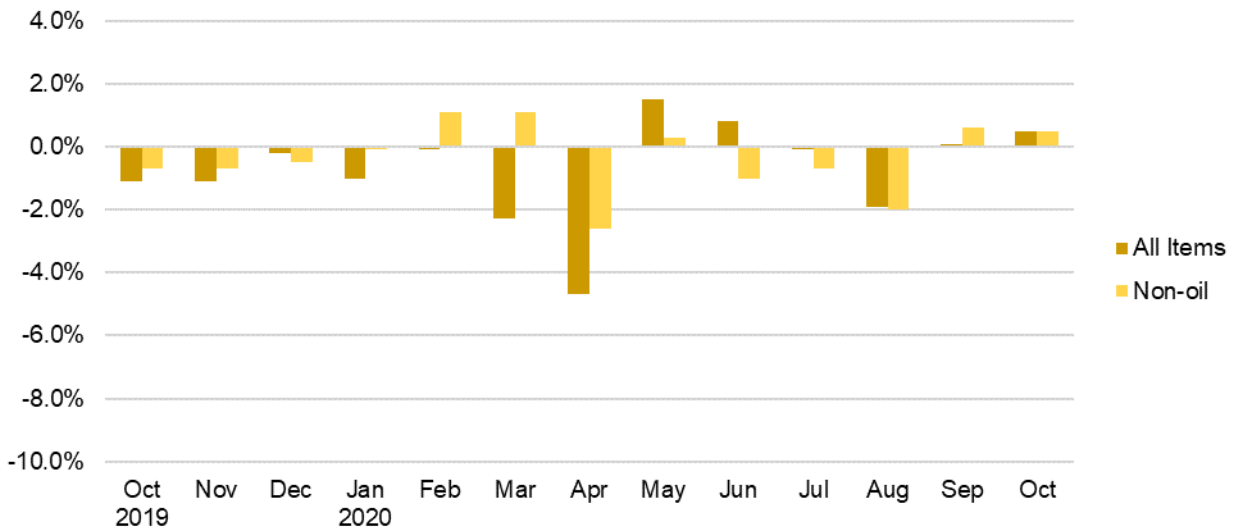


## Singapore Manufactured Products Price Index (2018 = 100) October 2020

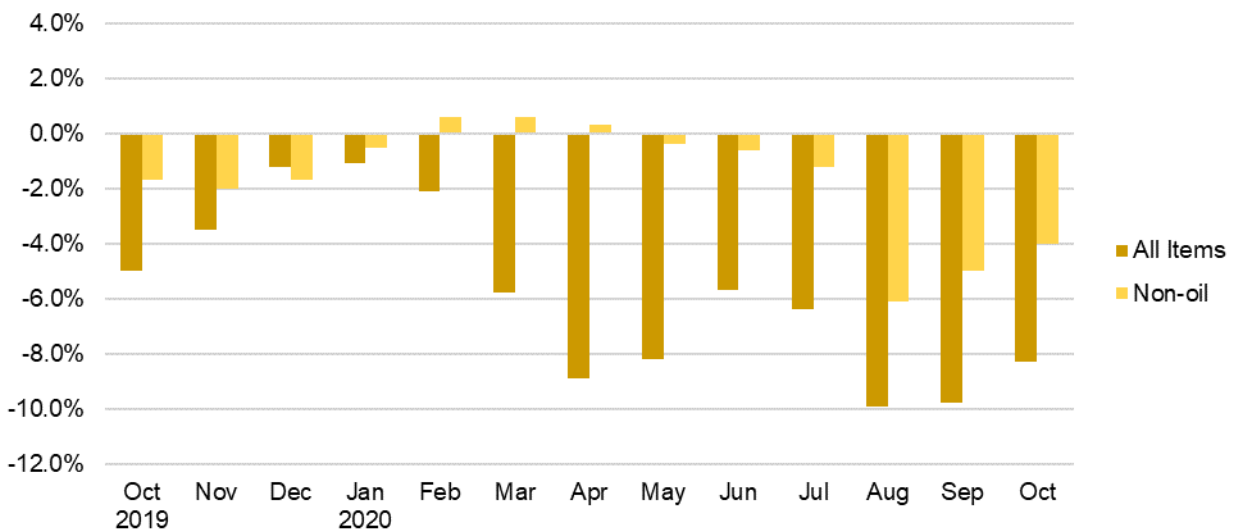
**Chart 1: Index**



**Chart 2: Month-on-Month Change**

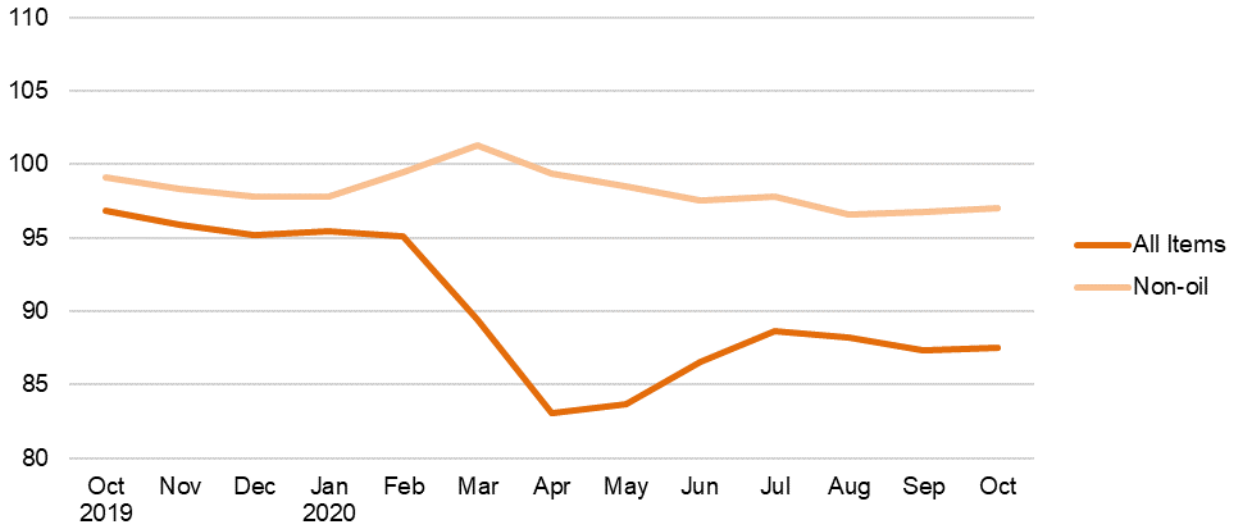


**Chart 3: Year-on-Year Change**

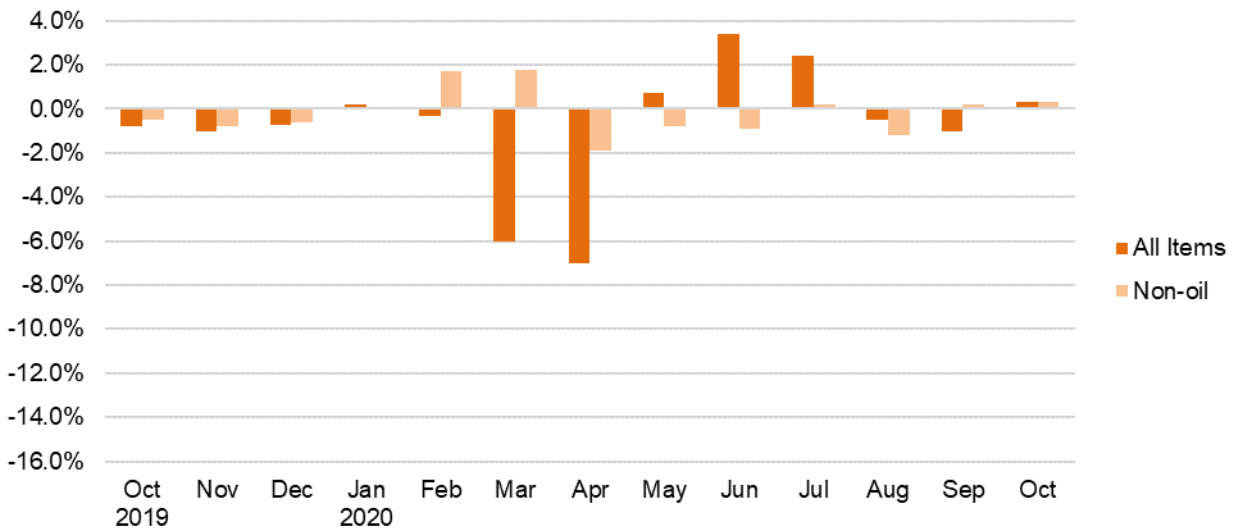


## Domestic Supply Price Index (2018 = 100) October 2020

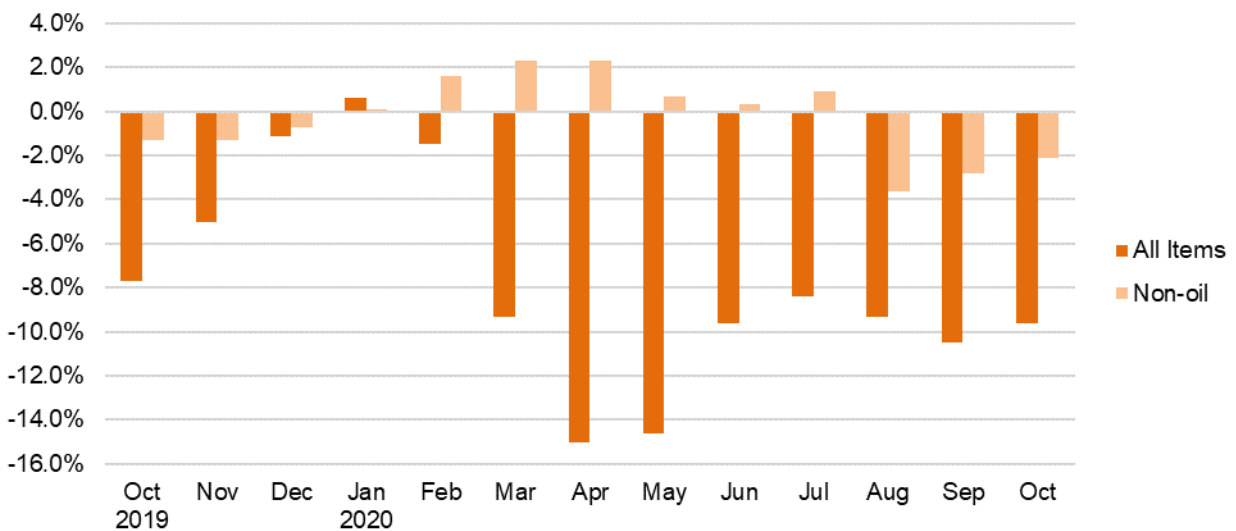
**Chart 4: Index**



**Chart 5: Month-on-Month Change**



**Chart 6: Year-on-Year Change**





**Table 1 Singapore Manufactured Products Price Index**
**October 2020**

Commodity section / division	Weights	Index (2018=100)			% Change		
					Sep 2020	Oct 2020	Oct 2020
		Aug 2020	Sep 2020	Oct 2020	Aug 2020	Sep 2020	Oct 2019
<b>All Items</b>	<b>10,000</b>	<b>88.3</b>	<b>88.4</b>	<b>88.8</b>	<b>0.1</b>	<b>0.5</b>	<b>-8.3</b>
<b>Non-oil Items</b>	<b>8,586</b>	<b>93.4</b>	<b>93.9</b>	<b>94.4</b>	<b>0.6</b>	<b>0.5</b>	<b>-4.0</b>
Food & Live Animals	256	100.8	100.5	100.2	-0.2	-0.3	-0.5
Meat & meat preparations	20	107.5	107.3	107.1	-0.3	-0.2	1.9
Dairy products & birds' eggs	15	105.2	105.3	104.9	0.1	-0.4	-0.2
Fish seafood & preparations	5	95.6	95.0	95.2	-0.7	0.3	0.4
Cereals & cereal preparations	42	104.1	104.1	104.2	-	0.1	2.0
Vegetables & fruit	3	100.0	100.0	100.0	-	-	0.7
Coffee, tea, cocoa, spices & manufactures	28	95.5	96.0	95.0	0.5	-1.0	2.3
Animal feeding stuff (excl unmilled cereals)	6	90.3	90.3	90.2	-	-0.2	-8.1
Miscellaneous food preparations	135	100.0	99.5	99.1	-0.5	-0.4	-1.9
Beverages & Tobacco	31	103.6	103.6	103.6	-	-	-0.4
Beverages	31	103.6	103.6	103.6	-	-	-0.4
Crude Materials (excl fuels)	56	80.0	82.9	86.2	3.6	4.0	-8.7
Crude rubber	50	77.3	80.4	84.3	4.0	4.9	-10.0
Cork & wood	1	100.9	100.9	100.9	-	-	-
Crude fertilizers & minerals	2	108.9	108.9	103.2	-	-5.2	-5.2
Metalliferous ores & metal scrap	4	100.3	101.9	101.9	1.5	-	4.7
Mineral Fuels, Lubricants & Related Materials	1,414	57.5	54.9	55.0	-4.6	0.1	-37.8
Petroleum & products & related materials	1,386	57.5	54.8	54.8	-4.7	-	-38.1
Gas	28	59.6	60.4	63.4	1.4	4.9	-21.7
Animal & Vegetable Oils, Fats & Waxes	14	90.4	94.5	95.4	4.5	0.9	9.4
Fixed vegetable fats & oils	14	90.4	94.5	95.4	4.5	0.9	9.4
Chemicals & Chemical Products	2,165	82.7	84.5	84.8	2.2	0.3	-10.1
Organic chemicals	1,012	72.6	76.6	77.6	5.5	1.3	-16.1
Inorganic chemicals	40	103.8	95.7	88.8	-7.8	-7.2	-10.1
Dyeing, tanning & colouring materials	22	102.0	101.3	101.2	-0.7	-0.1	0.2
Medicinal & pharmaceutical products	232	86.8	86.9	86.4	0.1	-0.6	-6.9
Essential oils & perfume; toilet cleaning products	133	101.7	103.2	100.6	1.4	-2.5	2.4
Plastics in primary forms	372	84.9	85.2	86.7	0.3	1.8	-4.9
Plastics in non-primary forms	34	97.8	97.6	98.7	-0.2	1.1	-1.4
Chemical materials & products nes	320	95.8	95.4	94.5	-0.4	-1.0	-7.1
Manufactured Goods	284	104.9	104.7	105.3	-0.3	0.6	1.3
Rubber manufactures nes	23	101.2	100.7	100.7	-0.5	-	0.6
Wood & cork manufactures (excl furniture)	8	98.2	98.2	98.2	-	-	-1.5
Paper manufactures	34	96.1	96.2	96.1	-	-	-5.3
Non-metal mineral manufactures nes	45	100.0	99.9	99.9	-0.2	-	-6.3
Iron & steel	53	106.3	104.5	103.1	-1.7	-1.3	-2.1
Non-ferrous metals	20	95.9	98.6	98.7	2.9	-	1.8
Manufactures of metals nes	99	112.8	112.6	115.1	-0.2	2.2	9.2
Machinery & Transport Equipment	4,897	95.8	96.0	96.7	0.2	0.8	-2.5
Power-generating machinery & equipment	8	85.0	84.1	84.1	-1.0	-	-6.4
Machinery specialized for particular industries	571	98.3	98.2	98.1	-0.1	-0.2	-1.2
Metal working machinery	18	107.6	107.5	107.1	-0.2	-0.3	-
General industrial machinery	85	101.9	101.7	101.4	-0.1	-0.4	-1.5
Office machines & data-processing machines	880	104.7	103.7	104.5	-1.0	0.8	-0.3
Telecommunication apparatus	45	95.4	95.1	94.8	-0.3	-0.3	2.0
Electrical machinery apparatus nes, electrical parts	3,271	92.7	93.3	94.2	0.7	1.0	-3.5
Road vehicles	20	99.1	97.9	98.3	-1.2	0.4	-4.5
Miscellaneous Manufactured Articles	883	100.7	100.4	99.8	-0.3	-0.6	-0.6
Furniture, bedding, mattresses, cushions & others	16	100.1	100.1	100.1	-	-	-
Travel goods, handbags & similar containers	1	99.3	102.9	102.0	3.6	-0.9	3.3
Professional scientific & controlling instruments	516	99.2	99.0	98.4	-0.2	-0.6	-1.9
Photographic & optical goods nes; watches & clocks	48	98.7	98.5	98.3	-0.2	-0.2	-0.8
Miscellaneous manufactured articles nes	303	103.7	103.1	102.2	-0.6	-0.9	1.6

Figures may not sum to total due to rounding.

**Table 2 Domestic Supply Price Index**

**October 2020**

Commodity section / division	Weights	Index (2018=100)			% Change		
					Sep 2020	Oct 2020	Oct 2020
		Aug 2020	Sep 2020	Oct 2020	Aug 2020	Sep 2020	Oct 2019
<b>All Items</b>	<b>10,000</b>	<b>88.2</b>	<b>87.3</b>	<b>87.5</b>	<b>-1.0</b>	<b>0.3</b>	<b>-9.6</b>
<b>Non-oil Items</b>	<b>7,212</b>	<b>96.6</b>	<b>96.8</b>	<b>97.0</b>	<b>0.2</b>	<b>0.3</b>	<b>-2.1</b>
Food & Live Animals	319	103.2	102.8	102.2	-0.4	-0.6	-0.6
Live animals	10	100.1	100.3	100.0	0.2	-0.3	1.4
Meat & meat preparations	56	106.9	107.1	107.0	0.1	-0.1	1.7
Dairy products & birds' eggs	43	109.4	106.1	105.4	-3.0	-0.6	-2.2
Fish seafood & preparations	42	94.4	94.0	93.6	-0.4	-0.4	-3.0
Cereals & cereal preparations	51	103.0	102.8	102.7	-0.2	-0.1	0.6
Vegetables & fruit	40	107.2	107.9	108.0	0.6	0.1	2.2
Sugar, sugar preparations & honey	13	101.7	101.6	101.8	-0.2	0.2	3.1
Coffee, tea, cocoa, spices & manufactures	27	100.2	100.5	95.1	0.3	-5.4	-4.8
Animal feeding stuff (excl unmilled cereals)	3	101.3	101.2	100.8	-0.1	-0.5	1.9
Miscellaneous food preparations	35	100.0	99.9	99.9	-0.1	-	-3.1
Beverages & Tobacco	30	104.6	104.9	102.3	0.2	-2.5	-0.2
Beverages	28	105.5	105.5	102.5	-	-2.9	0.1
Tobacco & manufactures	2	93.8	96.8	99.5	3.2	2.8	-3.0
Crude Materials (excl fuels)	85	93.5	94.9	96.3	1.4	1.5	-2.2
Oil seeds & oleaginous fruits	3	113.9	113.4	113.3	-0.5	-0.1	9.5
Crude rubber	31	79.0	81.8	85.3	3.5	4.3	-9.0
Cork & wood	3	94.3	94.3	94.3	-	-	-1.5
Crude fertilizers & minerals	34	103.0	102.9	102.7	-0.2	-0.2	-1.0
Metalliferous ores & metal scrap	5	94.7	98.0	101.3	3.5	3.4	14.2
Crude animal & vegetable materials nes	10	99.6	101.7	101.9	2.0	0.3	2.3
Mineral Fuels, Lubricants & Related Materials	2,788	66.5	62.8	62.9	-5.5	0.2	-30.8
Petroleum & products & related materials	2,669	66.9	63.0	63.1	-5.9	0.2	-30.5
Gas	119	56.9	59.1	59.1	4.0	-0.1	-36.0
Animal & Vegetable Oils, Fats & Waxes	42	102.1	104.2	108.2	2.1	3.9	20.3
Fixed vegetable fats & oils	42	102.1	104.2	108.2	2.1	3.9	20.3
Chemicals & Chemical Products	1,142	86.2	86.3	86.5	0.1	0.2	-7.6
Organic chemicals	459	68.9	70.6	72.2	2.4	2.3	-14.9
Inorganic chemicals	54	107.8	102.5	98.7	-4.9	-3.6	-1.4
Dyeing, tanning & colouring materials	20	108.3	108.1	107.2	-0.2	-0.8	-1.5
Medicinal & pharmaceutical products	95	100.0	99.8	99.6	-0.3	-0.2	-0.2
Essential oils & perfume; toilet cleaning products	62	101.8	103.2	100.5	1.3	-2.6	1.1
Plastics in primary forms	158	87.9	87.8	88.8	-0.1	1.2	-5.6
Plastics in non-primary forms	32	102.3	101.6	102.8	-0.7	1.1	0.8
Chemical materials & products nes	263	98.7	97.1	96.0	-1.6	-1.2	-5.5
Manufactured Goods	490	101.4	101.3	101.2	-0.1	-0.1	-1.0
Rubber manufactures nes	15	101.7	101.4	103.2	-0.3	1.8	-0.3
Wood & cork manufactures (excl furniture)	6	98.2	98.2	98.2	-	-	-1.4
Paper manufactures	53	95.0	95.0	94.7	-0.1	-0.3	-4.8
Textile manufactures	15	100.2	100.0	99.5	-0.2	-0.5	-3.0
Non-metal mineral manufactures nes	123	102.4	101.9	101.7	-0.5	-0.2	-2.3
Iron & steel	110	100.1	99.0	98.4	-1.1	-0.6	-3.4
Non-ferrous metals	80	104.6	106.1	106.0	1.5	-0.1	3.7
Manufactures of metals nes	86	103.1	103.3	103.8	0.2	0.5	2.4
Machinery & Transport Equipment	4,302	96.7	97.1	97.6	0.4	0.5	-1.8
Power-generating machinery & equipment	205	112.2	111.8	111.4	-0.3	-0.4	4.9
Machinery specialized for particular industries	189	99.8	99.6	99.3	-0.2	-0.3	-1.0
Metal working machinery	6	104.3	104.3	104.3	-	-	2.8
General industrial machinery	90	100.8	100.8	100.7	-0.1	-0.1	0.1
Office machines & data-processing machines	192	99.3	99.0	99.8	-0.3	0.8	-0.7
Telecommunication apparatus	53	83.8	83.8	83.5	0.1	-0.4	-11.2
Electrical machinery apparatus nes, electrical parts	3,456	95.4	95.9	96.6	0.5	0.7	-2.3
Road vehicles	111	101.9	102.2	102.3	0.3	-	-0.3
Miscellaneous Manufactured Articles	802	104.4	104.1	103.6	-0.2	-0.5	1.5
Prefab building, sanitary plumbing, lighting nes	7	98.2	102.1	105.6	4.0	3.4	7.4
Furniture, bedding, mattresses, cushions & others	23	105.2	105.2	105.6	-0.1	0.4	1.4
Travel goods, handbags & similar containers	39	99.1	101.0	101.0	1.9	-0.1	-2.3
Articles of apparel & clothing accessories	25	101.0	101.0	101.1	-	0.1	1.2
Footwear	14	102.4	103.5	103.9	1.0	0.4	4.4
Professional scientific & controlling instruments	409	100.9	100.5	100.3	-0.4	-0.2	-1.2
Photographic & optical goods nes; watches & clocks	75	106.9	106.7	106.8	-0.2	-	6.2
Miscellaneous manufactured articles nes	211	111.8	111.1	109.2	-0.6	-1.7	5.4

Figures may not sum to total due to rounding.

**Table 3 Singapore Manufactured Products Price Index**

Section	All Items	Non-oil Items	Food & Live Animals	Beverages & Tobacco	Crude Materials	Mineral Fuels	Animal & Vegetable Oils, Fats & Waxes	Chemicals & Chemical Products	Manu- factured Goods	Machinery & Transport Equipment	Misc. Manu- factured Articles
Weights	<b>10,000</b>	<b>8,586</b>	256	31	56	1,414	14	2,165	284	4,897	883
<b>Index (2018=100)</b>											
2016	<b>92.2</b>	<b>97.9</b>	99.7	103.0	94.8	66.4	113.6	88.0	96.2	105.2	95.4
2017	<b>95.8</b>	<b>98.6</b>	99.5	98.4	94.7	83.0	119.3	92.5	97.8	103.0	97.2
2018	<b>100.0</b>	<b>100.0</b>	100.0	100.0	100.0	100.0	100.0	100.0	100.0	100.0	100.0
2019	<b>96.7</b>	<b>97.6</b>	99.8	103.5	94.5	91.3	88.5	95.3	102.2	97.8	100.2
2019											
Oct	<b>96.9</b>	<b>98.2</b>	100.7	104.0	94.4	88.4	87.2	94.3	103.9	99.2	100.3
Nov	<b>95.8</b>	<b>97.6</b>	100.9	104.0	93.9	85.0	87.3	93.8	105.0	98.3	99.6
Dec	<b>95.6</b>	<b>97.1</b>	101.2	104.0	93.3	86.8	88.4	92.4	105.8	98.0	99.3
2020											
Jan	<b>94.7</b>	<b>96.9</b>	101.2	103.6	93.8	80.8	94.0	93.3	107.4	97.4	99.0
Feb	<b>94.6</b>	<b>98.0</b>	101.6	103.6	94.7	73.7	97.7	92.4	107.7	99.4	100.3
Mar	<b>92.4</b>	<b>99.1</b>	102.5	103.6	95.3	52.1	100.8	89.5	106.6	102.2	101.9
Apr	<b>88.1</b>	<b>96.5</b>	102.2	103.6	92.8	36.8	99.1	85.4	105.7	99.5	102.3
May	<b>89.3</b>	<b>96.8</b>	102.0	103.6	92.0	43.9	100.3	87.8	106.0	99.1	102.0
Jun	<b>90.1</b>	<b>95.9</b>	101.6	103.6	91.5	54.7	91.0	88.0	104.9	97.5	101.8
Jul	<b>90.0</b>	<b>95.3</b>	101.2	103.6	82.2	57.8	88.9	85.7	105.1	97.6	101.5
Aug	<b>88.3</b>	<b>93.4</b>	100.8	103.6	80.0	57.5	90.4	82.7	104.9	95.8	100.7
Sep	<b>88.4</b>	<b>93.9</b>	100.5	103.6	82.9	54.9	94.5	84.5	104.7	96.0	100.4
Oct	<b>88.8</b>	<b>94.4</b>	100.2	103.6	86.2	55.0	95.4	84.8	105.3	96.7	99.8
<b>Percentage Change over same period of previous year (%)</b>											
2017	<b>3.8</b>	<b>0.7</b>	-0.2	-4.4	-0.1	25.0	5.0	5.1	1.6	-2.2	1.9
2018	<b>4.4</b>	<b>1.4</b>	0.5	1.6	5.6	20.5	-16.2	8.1	2.3	-2.9	2.9
2019	<b>-3.3</b>	<b>-2.4</b>	-0.2	3.5	-5.5	-8.7	-11.5	-4.7	2.2	-2.2	0.2
2019											
Oct	<b>-5.0</b>	<b>-1.7</b>	0.3	4.1	-10.0	-22.8	-8.6	-6.9	2.8	0.2	-0.7
Nov	<b>-3.5</b>	<b>-2.0</b>	1.0	4.0	-8.3	-13.3	-5.4	-7.0	3.7	-0.2	-1.3
Dec	<b>-1.2</b>	<b>-1.7</b>	0.9	4.0	-8.0	2.0	-3.2	-7.5	4.1	0.5	-1.5
2020											
Jan	<b>-1.1</b>	<b>-0.5</b>	1.7	1.8	-4.6	-5.0	4.4	-4.2	6.2	0.7	-1.1
Feb	<b>-2.1</b>	<b>0.6</b>	2.2	1.8	-2.3	-19.7	9.0	-4.9	6.7	2.6	0.5
Mar	<b>-5.8</b>	<b>0.6</b>	2.8	1.8	-1.0	-45.6	13.2	-7.3	5.2	3.3	2.0
Apr	<b>-8.9</b>	<b>0.3</b>	3.2	-0.6	-0.4	-62.9	10.6	-10.9	5.6	4.4	2.5
May	<b>-8.2</b>	<b>-0.4</b>	2.5	-0.5	-2.2	-55.1	12.3	-8.8	5.6	2.5	1.0
Jun	<b>-5.7</b>	<b>-0.6</b>	2.4	-0.4	-1.7	-38.7	2.5	-6.9	4.2	1.3	1.2
Jul	<b>-6.4</b>	<b>-1.2</b>	2.0	-0.4	-11.4	-39.0	0.7	-8.8	3.5	1.3	1.6
Aug	<b>-9.9</b>	<b>-6.1</b>	1.2	-0.4	-15.1	-35.6	2.5	-13.4	2.9	-4.9	-0.6
Sep	<b>-9.8</b>	<b>-5.0</b>	0.5	-0.4	-12.0	-40.5	9.3	-11.3	1.5	-3.9	-0.7
Oct	<b>-8.3</b>	<b>-4.0</b>	-0.5	-0.4	-8.7	-37.8	9.4	-10.1	1.3	-2.5	-0.6

**Table 4 Domestic Supply Price Index**

Section	All Items	Non-oil Items	Food & Live Animals	Beverages & Tobacco	Crude Materials	Mineral Fuels	Animal & Vegetable Oils, Fats & Waxes	Chemicals & Chemical Products	Manu- factured Goods	Machinery & Transport Equipment	Misc. Manu- factured Articles
Weights	<b>10,000</b>	<b>7,212</b>	319	30	85	2,788	42	1,142	490	4,302	802
<b>Index (2018=100)</b>											
2016	<b>87.8</b>	<b>99.2</b>	99.2	100.6	99.7	61.6	111.5	90.4	93.2	103.2	100.7
2017	<b>94.0</b>	<b>100.2</b>	101.0	98.9	98.8	79.7	114.1	95.5	96.8	102.2	101.3
2018	<b>100.0</b>	<b>100.0</b>	100.0	100.0	100.0	100.0	100.0	100.0	100.0	100.0	100.0
2019	<b>96.7</b>	<b>98.2</b>	101.3	102.1	98.4	93.0	90.9	94.1	101.5	98.2	101.0
2019											
Oct	<b>96.8</b>	<b>99.1</b>	102.8	102.5	98.5	90.9	90.0	93.6	102.2	99.4	102.0
Nov	<b>95.9</b>	<b>98.3</b>	102.4	102.3	98.5	89.5	94.1	92.5	102.4	98.6	101.3
Dec	<b>95.2</b>	<b>97.8</b>	102.7	102.2	98.5	88.5	99.0	90.4	102.3	98.2	101.0
2020											
Jan	<b>95.4</b>	<b>97.8</b>	103.6	102.7	98.9	89.3	103.4	91.3	101.7	97.9	101.1
Feb	<b>95.1</b>	<b>99.5</b>	103.7	103.7	99.5	83.9	102.5	92.5	103.0	100.0	102.6
Mar	<b>89.4</b>	<b>101.3</b>	103.9	104.2	100.0	58.6	100.3	90.7	103.1	103.0	104.9
Apr	<b>83.1</b>	<b>99.3</b>	105.1	104.9	98.6	41.1	98.0	85.7	102.5	100.9	106.1
May	<b>83.7</b>	<b>98.5</b>	104.9	104.8	98.3	45.5	95.8	85.1	102.3	99.7	105.8
Jun	<b>86.5</b>	<b>97.6</b>	103.6	105.2	97.9	58.0	97.0	86.4	101.8	98.2	104.8
Jul	<b>88.6</b>	<b>97.8</b>	103.8	104.7	94.4	64.9	98.4	86.5	102.0	98.5	104.7
Aug	<b>88.2</b>	<b>96.6</b>	103.2	104.6	93.5	66.5	102.1	86.2	101.4	96.7	104.4
Sep	<b>87.3</b>	<b>96.8</b>	102.8	104.9	94.9	62.8	104.2	86.3	101.3	97.1	104.1
Oct	<b>87.5</b>	<b>97.0</b>	102.2	102.3	96.3	62.9	108.2	86.5	101.2	97.6	103.6
<b>Percentage Change over same period of previous year (%)</b>											
2017	<b>7.0</b>	<b>1.0</b>	1.9	-1.7	-0.9	29.4	2.4	5.7	3.8	-1.0	0.6
2018	<b>6.4</b>	<b>-0.2</b>	-1.0	1.1	1.2	25.5	-12.4	4.7	3.3	-2.1	-1.3
2019	<b>-3.3</b>	<b>-1.8</b>	1.3	2.1	-1.6	-7.0	-9.1	-5.9	1.5	-1.8	1.0
2019											
Oct	<b>-7.7</b>	<b>-1.3</b>	2.1	2.4	-4.0	-22.1	-5.0	-8.2	1.6	-0.4	1.1
Nov	<b>-5.0</b>	<b>-1.3</b>	2.2	2.1	-3.2	-14.3	3.6	-7.0	2.0	-0.7	0.6
Dec	<b>-1.1</b>	<b>-0.7</b>	2.3	2.0	-2.1	-2.4	9.5	-6.2	1.4	-	0.6
2020											
Jan	<b>0.6</b>	<b>0.1</b>	2.9	1.4	-0.3	2.0	13.1	-4.2	1.7	0.5	0.9
Feb	<b>-1.5</b>	<b>1.6</b>	3.8	2.5	1.0	-10.1	12.5	-3.4	2.1	2.4	2.8
Mar	<b>-9.3</b>	<b>2.3</b>	4.2	2.8	1.6	-39.9	11.5	-5.2	1.5	3.5	5.0
Apr	<b>-15.0</b>	<b>2.3</b>	5.0	2.9	1.0	-58.7	8.1	-10.1	1.4	4.8	6.0
May	<b>-14.6</b>	<b>0.7</b>	4.2	2.7	0.1	-54.0	6.7	-10.8	0.7	2.6	4.8
Jun	<b>-9.6</b>	<b>0.3</b>	2.5	3.2	0.2	-36.9	9.7	-7.8	0.6	1.5	3.7
Jul	<b>-8.4</b>	<b>0.9</b>	2.2	2.3	-3.1	-32.5	12.9	-7.0	1.0	2.2	3.7
Aug	<b>-9.3</b>	<b>-3.6</b>	1.3	1.7	-5.6	-25.9	14.2	-8.6	-	-4.2	1.8
Sep	<b>-10.5</b>	<b>-2.8</b>	0.6	2.0	-3.8	-31.9	16.4	-8.7	-0.8	-2.9	1.6
Oct	<b>-9.6</b>	<b>-2.1</b>	-0.6	-0.2	-2.2	-30.8	20.3	-7.6	-1.0	-1.8	1.5

**NOTATIONS**

- nes not elsewhere specified
- nil or negligible

**NOTES**

The Singapore Manufactured Products and Domestic Supply Price Indices report contains statistics that are the most recent available at the time of its preparation.

Some statistics, particularly those for the most recent time periods, are provisional and may be subject to revision in later issues.