



SINGAPORE MANUFACTURED PRODUCTS & DOMESTIC SUPPLY PRICE INDICES

September 2018

**SINGAPORE MANUFACTURED PRODUCTS &
DOMESTIC SUPPLY PRICE INDICES, September 2018**
ISSN 2591-7447

© Department of Statistics, Ministry of Trade & Industry, Republic of Singapore

Reproducing or quoting any part of this publication is permitted, provided this publication is accredited as the source. Please refer to the Statistics Singapore Website Terms of Use (<http://www.singstat.gov.sg/terms-of-use>) for more details on the conditions of use of this publication.

Statistical activities conducted by the Singapore Department of Statistics are governed by the provisions of the Statistics Act (Cap. 317). The Act guarantees the confidentiality of information collected from individuals and companies. It spells out the legislative authority and responsibility of the Chief Statistician. The Act is available in the Department's Website (www.singstat.gov.sg).

SINGAPORE MANUFACTURED PRODUCTS PRICE INDEX (2012 = 100)

September 2018

Singapore Manufactured Products Price Index

Change over previous month

The Singapore Manufactured Products Price Index declined 0.3 per cent in September 2018, after remaining unchanged in August 2018. The Oil index went up 4.8 per cent, extending the 1.1 per cent gain in August 2018, due mainly to higher prices of diesel fuel & fuel oil and power kerosene. The Non-oil index fell 1.4 per cent in September 2018, following the 0.2 per cent decrease in the previous month.

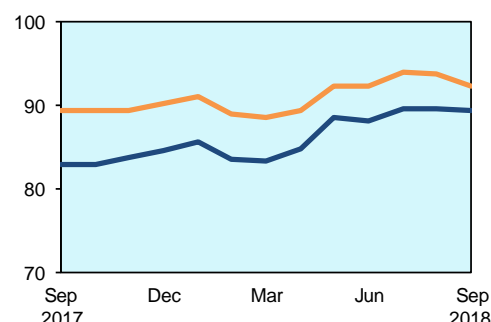
All Non-oil sub-indices were lower, except for the Crude Materials and Manufactured Goods indices which were unchanged. The declines in the Non-oil sub-indices were led by the Chemicals & Chemical Products (-2.8 per cent) and Machinery & Transport Equipment (-1.0 per cent) indices, due mainly to lower prices of organic chemicals and integrated circuits respectively.

Change over same period of previous year

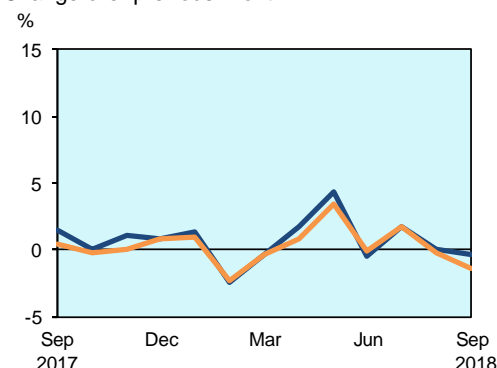
The Singapore Manufactured Products Price Index increased 7.8 per cent in September 2018 over the previous year, extending the 9.8 per cent increase in August 2018. The Oil and Non-Oil indices rose 31.8 per cent and 3.3 per cent respectively.

All Non-oil sub-indices were higher, except for the Animal & Vegetable Oils (-18.1 per cent) index. Higher prices were registered for Chemicals & Chemical Products (7.9 per cent), Crude Materials (4.7 per cent), Food & Live Animals (1.9 per cent), Machinery & Transport Equipment (1.5 per cent), Beverages & Tobacco (1.5 per cent), Manufactured Goods (1.3 per cent) and Miscellaneous Manufactured Articles (0.9 per cent).

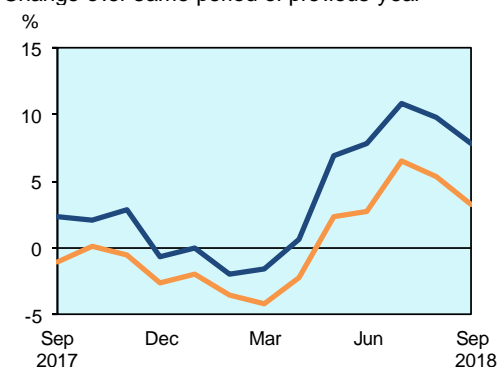
Singapore
Manufactured Products Price Index
(2012=100)



Change over previous month



Change over same period of previous year



DOMESTIC SUPPLY PRICE INDEX (2012 = 100)

September 2018

Domestic Supply Price Index

Change over previous month

The Domestic Supply Price Index rose 1.0 per cent in September 2018, following the 0.3 per cent increase in the previous month. The Oil index climbed 4.5 per cent in September 2018, continuing the 0.3 per cent increase in August 2018, due mainly to higher prices of crude petroleum and diesel fuel & fuel oil. The Non-oil index fell 0.6 per cent, in contrast to the 0.3 per cent increase in the previous month.

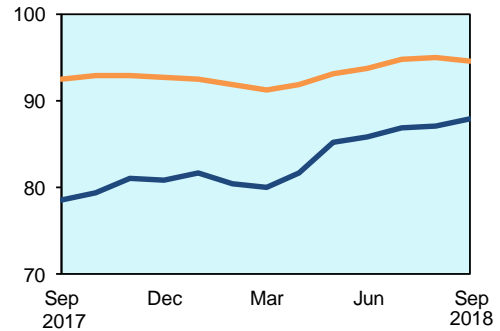
Among the Non-oil sub-indices, decreases led by the Machinery & Transport Equipment (-0.9 per cent), Miscellaneous Manufactured Articles (-0.2 per cent) and Food & Live Animals (-0.2 per cent) indices were partially offset by the increase in the Manufactured Goods (0.2 per cent) index.

Change over same period of previous year

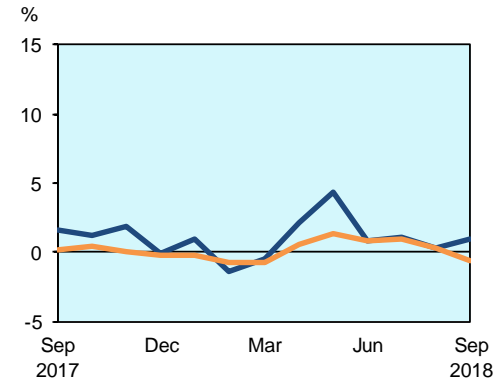
The Domestic Supply Price Index rose 12.1 per cent in September 2018 over the previous year, following the 12.8 per cent increase in August 2018. The Oil and Non-Oil indices increased 40.8 per cent and 2.1 per cent respectively in September 2018.

Among the Non-oil sub-indices, higher prices of Chemicals & Chemical Products (7.6 per cent), Manufactured Goods (4.1 per cent), Beverages & Tobacco (1.2 per cent), Machinery & Transport Equipment (0.9 per cent) and Crude Materials (0.8 per cent) were partially moderated by lower prices of Animal & Vegetable Oils (-12.9 per cent), Food & Live Animals (-0.4 per cent) and Miscellaneous Manufactured Articles (-0.4 per cent).

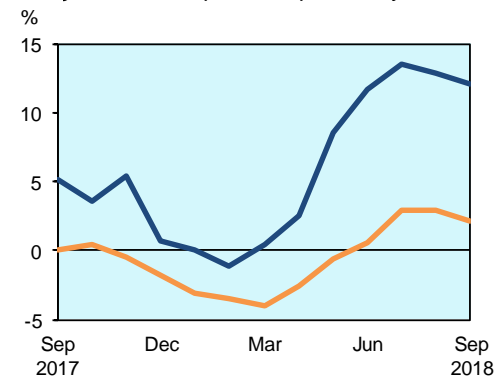
Domestic Supply Price Index (2012=100) — Overall — Non-oil



Change over previous month



Change over same period of previous year



TECHNICAL NOTE

The *Singapore Manufactured Products Price Index (SMPPPI)* monitors price changes of locally manufactured commodities. The weights of the index are derived from the distribution of local production by commodity in 2011. Ex-factory prices are obtained from principal manufacturers of the items concerned.

The *Domestic Supply Price Index (DSPI)* is designed to measure the changes in the price level of goods manufactured locally or imported which are retained for use in the domestic economy by the government, business or household sectors. For imported products, the prices refer to those paid by importers in bringing the goods into Singapore, commonly referred to as c.i.f. prices. In the case of Singapore manufactured products, the quotations used are ex-factory prices. The weight for each commodity item is proportional to the value of its total supply or availability in the domestic market in 2011.

Index Formula

The 2012-based series is compiled using the 'modified Laspeyres' formula where the weight reference period of 2011 preceded the price reference period of 2012. The geometric mean (GM) formula has been adopted in the computation of unweighted elementary aggregate price indices. The arithmetic mean (AM) formula is applied in compiling indices at higher levels of aggregation where weights of specific sub-indices are available.

An Information Paper on the Rebasement of Singapore Manufactured Products and Domestic Supply Price Indices (2012=100) is available on the department's website at <https://www.singstat.gov.sg/ppi#Producer-and-International-Trade-Prices>.

Measurement of Changes in Price Indices

Change over previous month compares the index of the month with that of the preceding month. Such comparisons measure the change in the price index between two consecutive months. They serve as useful short-term indicators of the price movements. As the price indices are found not to be seasonal, it is not necessary for seasonal adjustment to be carried out.

Change over same period of previous year measures change in the index over a twelve-month period. Such comparisons compare the movement in the price index between similar months in two consecutive years.

Index Revision

The indices may be revised when late returns and amendments received from respondents are incorporated.

Dissemination of Data

The Singapore Manufactured Products and Domestic Supply Price Indices are available on the SingStat Website (www.singstat.gov.sg/tablebuilder). Excel tables for this month's report are available at <https://www.singstat.gov.sg/publications/economy/producer-price-indices> or through the QR code below:



Table 1 Singapore Manufactured Products Price Index

September 2018

Commodity section / division	Weights	Index (2012=100)			% Change		
		Jul 2018	Aug 2018	Sep 2018	Aug 2018	Sep 2018	Sep 2018
					Jul 2018	Aug 2018	Sep 2017
All Items	10,000	89.6	89.6	89.4	-	-0.3	7.8
Non-oil Items	7,782	94.0	93.8	92.4	-0.2	-1.4	3.3
Food & Live Animals	266	103.5	103.7	103.5	0.2	-0.2	1.9
Meat & meat preparations	22	99.4	98.5	98.4	-0.8	-0.1	-1.2
Dairy products & birds' eggs	58	96.4	95.8	95.8	-0.6	-	-0.9
Fish seafood & preparations	7	116.2	116.2	116.2	-	-	-2.6
Cereals & cereal preparations	44	110.2	110.2	110.2	-	-	1.2
Vegetables & fruit	4	104.3	104.3	104.3	-	-	-
Sugar, sugar preparations & honey	2	101.9	102.9	103.4	0.9	0.5	4.6
Coffee, tea, cocoa, spices & manufactures	31	101.4	104.1	102.1	2.6	-1.9	6.5
Animal feeding stuff (excl unmilled cereals)	9	104.3	104.3	104.2	-	-0.1	1.8
Miscellaneous food preparations	89	105.6	105.9	105.9	0.2	0.1	3.6
Beverages & Tobacco	54	99.2	99.2	99.2	-	-0.1	1.5
Beverages	27	96.3	96.3	96.3	-	-	-0.1
Tobacco & manufactures	27	102.1	102.0	101.9	-	-0.1	3.1
Crude Materials (excl fuels)	7	114.6	114.5	114.5	-0.1	-	4.7
Cork & wood	1	125.7	125.7	125.9	-	0.1	0.8
Crude fertilizers & minerals	3	129.9	129.7	129.7	-0.2	-	9.6
Metalliferous ores & metal scrap	3	98.1	98.1	98.1	-	-	-
Mineral Fuels, Lubricants & Related Materials	2,218	74.3	75.2	78.7	1.1	4.8	31.8
Petroleum & products & related materials	2,187	74.4	75.2	78.8	1.1	4.8	31.8
Gas	31	69.6	72.9	77.4	4.7	6.2	29.0
Animal & Vegetable Oils, Fats & Waxes	28	80.5	81.8	79.5	1.6	-2.8	-18.1
Fixed vegetable fats & oils	16	91.3	92.7	90.1	1.5	-2.7	-24.9
Animal & vegetable oils, fats & waxes nes	12	66.4	67.6	65.6	1.8	-3.0	-2.4
Chemicals & Chemical Products	2,335	102.6	100.3	97.6	-2.2	-2.8	7.9
Organic chemicals	1,402	106.7	103.0	98.0	-3.5	-4.8	10.7
Inorganic chemicals	56	85.0	84.6	85.0	-0.4	0.4	2.3
Dyeing, tanning & colouring materials	33	93.0	93.1	93.3	-	0.2	1.6
Medicinal & pharmaceutical products	157	100.4	100.6	100.7	0.2	0.1	0.6
Essential oils & perfume; toilet cleaning products	64	110.6	110.9	109.2	0.2	-1.5	0.4
Plastics in primary forms	323	101.6	101.9	102.3	0.3	0.4	14.7
Plastics in non-primary forms	38	92.0	92.0	92.2	-	0.3	-2.4
Chemical materials & products nes	262	87.5	86.9	88.6	-0.6	2.0	-3.9
Manufactured Goods	439	98.2	98.2	98.2	-0.1	-	1.3
Leather manufactures nes	5	140.8	140.8	140.8	-	-	5.2
Rubber manufactures nes	18	113.6	113.9	113.9	0.2	-	7.1
Wood & cork manufactures (excl furniture)	8	103.8	103.8	103.8	-	-	-
Paper manufactures	44	99.9	100.0	100.0	0.1	-0.1	-0.5
Textile manufactures	10	104.3	104.3	104.3	-	-	-
Non-metal mineral manufactures nes	77	97.4	97.4	97.7	0.1	0.3	1.4
Iron & steel	63	78.3	79.4	80.0	1.3	0.8	9.0
Non-ferrous metals	31	105.4	105.1	104.8	-0.3	-0.3	3.4
Manufactures of metals nes	183	100.8	100.3	100.0	-0.5	-0.3	-1.3
Machinery & Transport Equipment	3,900	87.0	87.8	86.9	0.9	-1.0	1.5
Power-generating machinery & equipment	33	95.8	93.4	89.1	-2.5	-4.5	-5.3
Machinery specialized for particular industries	376	90.5	87.6	90.3	-3.3	3.1	0.9
Metal working machinery	21	96.5	96.5	96.5	-	-	-
General industrial machinery	167	98.3	99.3	99.2	1.0	-0.1	-1.2
Office machines & data-processing machines	1,143	77.7	78.3	78.4	0.8	0.2	1.1
Telecommunication apparatus	49	98.0	98.1	98.2	0.1	-	-1.2
Electrical machinery apparatus nes, electrical parts	2,076	89.6	91.3	89.2	2.0	-2.3	2.4
Road vehicles	35	117.3	111.8	107.8	-4.7	-3.6	-7.3
Miscellaneous Manufactured Articles	753	97.5	98.2	97.8	0.7	-0.3	0.9
Furniture, bedding, mattresses, cushions & others	31	117.5	117.5	117.5	0.1	-	-0.5
Travel goods, handbags & similar containers	1	113.5	116.5	116.1	2.6	-0.3	3.5
Articles of apparel & clothing accessories	27	94.8	94.9	94.9	0.1	-	0.2
Professional scientific & controlling instruments	327	93.1	94.0	93.7	0.9	-0.3	1.5
Photographic & optical goods nes; w atches & clocks	21	79.1	79.1	79.2	-0.1	0.2	-2.7
Miscellaneous manufactured articles nes	346	101.1	101.8	101.3	0.7	-0.5	0.7

Table 2 Domestic Supply Price Index

September 2018

Commodity section / division	Weights	Index (2012=100)			% Change		
		Jul 2018	Aug 2018	Sep 2018	Aug 2018	Sep 2018	Sep 2018
					Jul 2018	Aug 2018	Sep 2017
All Items	10,000	86.9	87.2	88.1	0.3	1.0	12.1
Non-oil Items	6,300	94.8	95.1	94.5	0.3	-0.6	2.1
Food & Live Animals	327	101.2	101.6	101.4	0.4	-0.2	-0.4
Live animals	14	97.3	91.7	87.2	-5.8	-4.9	-9.8
Meat & meat preparations	44	100.3	99.2	98.6	-1.1	-0.5	-4.2
Dairy products & birds' eggs	72	96.1	98.2	99.1	2.1	0.9	-0.8
Fish seafood & preparations	23	111.4	111.9	111.8	0.4	-	1.5
Cereals & cereal preparations	49	108.4	108.0	107.8	-0.3	-0.2	6.0
Vegetables & fruit	26	106.0	109.4	108.8	3.2	-0.5	0.7
Sugar, sugar preparations & honey	13	80.3	80.7	80.1	0.4	-0.8	-10.4
Coffee, tea, cocoa, spices & manufactures	27	94.7	95.5	94.5	0.8	-1.1	-6.3
Animal feeding stuff (excl unmilled cereals)	4	108.6	108.4	108.7	-0.1	0.2	2.2
Miscellaneous food preparations	55	104.2	104.5	104.8	0.3	0.2	3.0
Beverages & Tobacco	44	101.5	101.5	101.4	-	-0.1	1.2
Beverages	31	99.2	99.2	99.1	-	-0.1	0.4
Tobacco & manufactures	13	107.0	107.0	106.9	-	-0.1	3.1
Crude Materials (excl fuels)	59	88.3	87.9	87.9	-0.4	-	0.8
Hides, skins & furskins raw	2	85.6	85.6	86.3	0.1	0.8	-1.1
Oil seeds & oleaginous fruits	1	96.2	96.1	95.9	-0.1	-0.2	1.4
Crude rubber	2	97.9	98.4	98.5	0.4	0.2	8.0
Cork & wood	5	91.7	91.8	93.5	0.1	1.8	2.9
Textile fibres & their wastes	1	98.3	98.4	98.4	0.1	-	-6.0
Crude fertilizers & minerals	31	81.0	80.9	80.9	-0.1	-0.1	1.5
Metalliferous ores & metal scrap	11	95.2	93.3	92.5	-2.0	-0.8	-1.8
Crude animal & vegetable materials nes	6	105.7	105.9	106.2	0.2	0.3	0.2
Mineral Fuels, Lubricants & Related Materials	3,700	73.5	73.8	77.1	0.3	4.5	40.8
Petroleum & products & related materials	3,527	72.8	73.1	76.5	0.4	4.7	41.5
Gas	173	87.4	86.9	87.9	-0.6	1.1	29.0
Animal & Vegetable Oils, Fats & Waxes	44	69.6	69.3	68.1	-0.4	-1.8	-12.9
Fixed vegetable fats & oils	32	70.1	69.3	68.3	-1.1	-1.5	-16.1
Animal & vegetable oils, fats & waxes nes	12	68.1	69.2	67.4	1.6	-2.6	-2.1
Chemicals & Chemical Products	1,181	93.9	93.7	92.9	-0.3	-0.8	7.6
Organic chemicals	612	96.1	95.6	93.6	-0.5	-2.1	12.7
Inorganic chemicals	64	90.2	87.9	88.5	-2.5	0.6	4.0
Dyeing, tanning & colouring materials	17	89.7	89.9	89.9	0.2	-	1.7
Medicinal & pharmaceutical products	102	79.6	80.6	81.6	1.3	1.2	4.1
Essential oils & perfume; toilet cleaning products	30	99.6	98.0	98.6	-1.6	0.6	2.0
Plastics in primary forms	92	99.0	99.0	98.8	-	-0.1	14.6
Plastics in non-primary forms	24	98.3	98.6	98.7	0.3	0.1	0.4
Chemical materials & products nes	240	92.7	93.1	93.8	0.4	0.8	-2.4
Manufactured Goods	668	96.5	96.5	96.7	-	0.2	4.1
Leather manufactures nes	2	140.8	140.8	140.8	-	-	5.2
Rubber manufactures nes	18	96.1	96.3	96.4	0.3	0.1	1.2
Wood & cork manufactures (excl furniture)	7	104.2	104.2	104.2	-	-	-
Paper manufactures	67	104.4	104.9	105.2	0.5	0.3	6.6
Textile manufactures	11	99.1	99.5	99.6	0.5	0.1	1.3
Non-metal mineral manufactures nes	130	96.7	96.9	97.1	0.2	0.1	2.3
Iron & steel	148	90.8	91.8	92.7	1.1	1.0	12.8
Non-ferrous metals	118	93.4	91.3	91.0	-2.3	-0.3	-3.6
Manufactures of metals nes	167	99.4	99.6	99.5	0.3	-0.1	3.8
Machinery & Transport Equipment	3,229	93.7	94.3	93.5	0.7	-0.9	0.9
Power-generating machinery & equipment	176	131.9	132.2	132.2	0.2	-	5.3
Machinery specialized for particular industries	188	95.5	95.3	95.4	-0.2	0.2	2.1
Metal working machinery	6	101.1	101.3	101.3	0.2	-0.1	0.4
General industrial machinery	149	100.8	100.7	100.8	-0.2	0.1	-0.6
Office machines & data-processing machines	234	98.2	98.2	98.3	-	0.1	0.6
Telecommunication apparatus	233	66.7	66.0	65.4	-1.1	-0.9	-4.1
Electrical machinery apparatus nes, electrical parts	2,176	91.8	92.7	91.6	1.1	-1.2	0.9
Road vehicles	67	111.9	113.5	110.9	1.4	-2.3	1.6
Miscellaneous Manufactured Articles	748	98.4	98.6	98.4	0.2	-0.2	-0.4
Prefab building, sanitary plumbing, lighting nes	10	101.0	100.6	100.7	-0.4	0.1	-
Furniture, bedding, mattresses, cushions & others	51	110.8	112.0	111.3	1.0	-0.6	0.5
Travel goods, handbags & similar containers	22	118.5	119.0	119.1	0.4	-	1.1
Articles of apparel & clothing accessories	24	107.8	108.1	109.6	0.3	1.4	2.6
Footwear	14	106.2	106.3	106.1	-	-0.2	0.9
Professional scientific & controlling instruments	312	99.8	100.4	100.0	0.6	-0.4	0.9
Photographic & optical goods nes; watches & clocks	93	95.2	95.5	95.8	0.3	0.2	0.6
Miscellaneous manufactured articles nes	222	91.4	90.8	90.6	-0.7	-0.2	-3.5

Table 3 Singapore Manufactured Products Price Index

Section	All Items	Non-oil Items	Food & Live Animals	Beverages & Tobacco	Crude Materials	Mineral Fuels	Animal & Vegetable Oils, Fats & Waxes	Chemicals & Chemical Products	Manu- factured Goods	Machinery & Transport Equipment	Misc. Manu- factured Articles
Weights	10,000	7,782	266	54	7	2,218	28	2,335	439	3,900	753
Index (2012=100)											
2014	93.6	94.8	104.9	100.6	104.2	89.6	94.3	99.1	98.9	90.6	96.4
2015	85.0	92.7	103.5	101.4	104.9	58.3	90.1	88.1	98.0	93.7	93.8
2016	80.4	89.8	102.6	101.8	109.0	47.1	95.2	86.4	94.3	89.7	92.8
2017	83.4	90.4	102.5	97.3	108.8	58.9	99.9	90.8	95.9	87.8	94.6
2017											
Sep	82.9	89.5	101.6	97.7	109.3	59.8	97.1	90.4	97.0	85.7	97.0
Oct	83.0	89.4	101.7	96.6	109.1	60.6	97.0	89.2	97.2	86.1	97.1
Nov	83.9	89.5	101.9	96.6	109.2	64.3	96.6	89.6	97.4	86.0	97.0
Dec	84.6	90.2	101.9	96.7	108.9	64.9	95.4	93.5	97.1	85.2	96.9
2018											
Jan	85.7	91.1	102.0	97.8	115.7	66.9	91.6	98.6	97.4	84.1	96.2
Feb	83.7	89.0	102.0	98.4	115.5	64.9	90.6	92.8	97.7	83.3	96.4
Mar	83.3	88.7	102.1	98.1	115.6	64.5	89.5	92.8	97.7	82.6	96.3
Apr	84.8	89.4	102.1	98.9	115.2	68.4	89.8	93.8	97.6	83.5	96.2
May	88.5	92.4	102.6	99.0	115.4	74.8	89.1	101.9	98.0	84.4	97.2
Jun	88.1	92.3	102.9	99.0	114.8	73.3	83.3	99.0	98.5	86.0	96.9
Jul	89.6	94.0	103.5	99.2	114.6	74.3	80.5	102.6	98.2	87.0	97.5
Aug	89.6	93.8	103.7	99.2	114.5	75.2	81.8	100.3	98.2	87.8	98.2
Sep	89.4	92.4	103.5	99.2	114.5	78.7	79.5	97.6	98.2	86.9	97.8
Percentage Change over same period of previous year (%)											
2015	-9.2	-2.2	-1.3	0.8	0.6	-35.0	-4.4	-11.1	-0.9	3.4	-2.6
2016	-5.5	-3.1	-0.9	0.4	3.8	-19.2	5.6	-2.0	-3.8	-4.3	-1.1
2017	3.8	0.7	-0.2	-4.4	-0.1	25.0	5.0	5.1	1.6	-2.2	1.9
2017											
Sep	2.3	-1.0	-0.6	-4.4	0.7	23.9	1.5	1.8	3.8	-4.4	5.0
Oct	2.1	0.2	-1.6	-4.4	0.9	13.0	1.9	4.9	3.6	-3.6	4.7
Nov	2.9	-0.5	-1.4	-4.3	0.9	23.3	-1.5	5.9	3.5	-5.2	3.8
Dec	-0.6	-2.6	-1.8	-4.3	0.7	10.7	-6.2	2.6	2.6	-7.4	3.1
2018											
Jan	-	-2.0	-1.6	0.3	6.4	10.9	-10.2	5.6	2.3	-8.1	2.7
Feb	-1.9	-3.5	-1.6	0.9	6.4	6.5	-10.7	0.1	2.7	-7.9	2.9
Mar	-1.6	-4.2	-1.1	0.6	6.6	12.9	-12.5	-0.6	2.5	-8.9	3.1
Apr	0.7	-2.2	-1.1	1.4	6.4	16.7	-13.2	0.9	2.4	-5.8	2.8
May	6.9	2.3	-0.1	1.4	6.8	32.5	-13.2	13.8	3.2	-4.9	4.4
Jun	7.8	2.8	0.4	1.5	6.5	37.4	-18.2	12.5	3.9	-2.9	4.3
Jul	10.9	6.5	1.5	1.9	4.6	36.0	-20.4	17.9	3.0	0.9	5.7
Aug	9.8	5.3	2.1	1.6	4.8	34.9	-16.8	11.8	2.8	2.4	3.6
Sep	7.8	3.3	1.9	1.5	4.7	31.8	-18.1	7.9	1.3	1.5	0.9

Table 4 Domestic Supply Price Index

Section	All Items	Non-oil Items	Food & Live Animals	Beverages & Tobacco	Crude Materials	Mineral Fuels	Animal & Vegetable Oils, Fats & Waxes	Chemicals & Chemical Products	Manufactured Goods	Machinery & Transport Equipment	Misc. Manufactured Articles
Weights	10,000	6,300	327	44	59	3,700	44	1,181	668	3,229	748
Index (2012=100)											
2014	94.1	97.2	104.8	101.0	100.5	88.7	84.2	98.8	96.7	95.9	98.0
2015	79.7	95.9	101.7	101.9	96.5	52.1	74.2	86.2	94.8	98.6	98.5
2016	74.1	92.6	99.7	101.5	87.9	42.6	78.0	82.4	89.1	95.1	99.0
2017	79.4	93.6	101.6	99.8	87.1	55.2	79.9	87.0	92.5	94.2	99.6
2017											
Sep	78.6	92.6	101.9	100.2	87.2	54.7	78.1	86.4	92.9	92.6	98.8
Oct	79.5	93.0	101.5	99.6	87.5	56.6	78.0	86.4	93.8	93.2	98.9
Nov	81.0	93.0	101.7	99.5	87.6	60.7	77.0	86.6	94.0	93.1	98.8
Dec	81.0	92.8	101.8	99.4	87.4	60.9	74.0	88.3	93.8	92.4	98.1
2018											
Jan	81.8	92.6	100.4	99.9	88.1	63.3	74.3	90.0	94.0	91.5	97.7
Feb	80.6	92.0	100.3	100.1	88.2	61.2	74.6	88.0	94.3	90.9	97.9
Mar	80.1	91.3	98.8	99.9	88.0	61.2	73.5	87.8	94.3	89.8	97.7
Apr	81.8	91.8	98.8	100.4	88.2	64.8	73.4	88.6	94.6	90.6	97.8
May	85.3	93.1	99.7	100.6	88.7	72.1	73.2	92.3	95.8	91.3	98.3
Jun	86.0	93.9	99.9	100.8	89.1	72.5	71.4	92.7	96.3	92.6	98.1
Jul	86.9	94.8	101.2	101.5	88.3	73.5	69.6	93.9	96.5	93.7	98.4
Aug	87.2	95.1	101.6	101.5	87.9	73.8	69.3	93.7	96.5	94.3	98.6
Sep	88.1	94.5	101.4	101.4	87.9	77.1	68.1	92.9	96.7	93.5	98.4
Percentage Change over same period of previous year (%)											
2015	-15.3	-1.4	-3.0	0.9	-4.0	-41.3	-11.9	-12.8	-2.0	2.9	0.5
2016	-6.9	-3.4	-2.0	-0.4	-8.9	-18.2	5.1	-4.4	-6.0	-3.6	0.5
2017	7.0	1.0	1.9	-1.7	-0.9	29.4	2.4	5.7	3.8	-1.0	0.6
2017											
Sep	5.2	0.1	2.4	-1.1	0.8	23.4	-2.4	3.9	5.3	-2.3	-0.2
Oct	3.6	0.5	0.8	-1.4	0.8	13.5	-0.9	3.7	5.8	-1.4	-0.6
Nov	5.4	-0.5	0.2	-1.6	0.1	25.0	-5.5	4.6	4.2	-2.9	-1.5
Dec	0.7	-1.8	-0.7	-1.8	-0.4	7.8	-13.9	1.2	2.5	-3.5	-2.1
2018											
Jan	0.1	-3.1	-1.9	-0.1	0.7	8.9	-14.5	0.4	1.8	-5.3	-2.8
Feb	-1.1	-3.5	-1.8	0.2	1.0	5.5	-12.9	-2.2	1.9	-5.3	-2.9
Mar	0.5	-4.0	-2.9	-	1.4	13.9	-11.3	-1.6	2.1	-6.5	-2.7
Apr	2.6	-2.5	-2.5	1.1	2.0	17.5	-8.9	0.2	3.1	-4.5	-2.9
May	8.6	-0.6	-1.6	0.9	2.0	36.4	-10.1	7.1	4.4	-3.7	-1.8
Jun	11.7	0.6	-1.3	1.1	2.8	47.6	-9.7	9.8	5.2	-2.5	-1.9
Jul	13.5	2.9	0.1	1.8	1.6	46.5	-10.5	12.7	5.6	0.6	-0.5
Aug	12.8	3.0	0.5	1.3	1.1	42.5	-10.2	9.6	4.6	1.7	-0.2
Sep	12.1	2.1	-0.4	1.2	0.8	40.8	-12.9	7.6	4.1	0.9	-0.4

NOTATIONS

nes not elsewhere specified
- nil or negligible

NOTES

The Singapore Manufactured Products and Domestic Supply Price Indices report contains statistics that are the most recent available at the time of its preparation.

Some statistics, particularly those for the most recent time periods, are provisional and may be subject to revision in later issues.