



# **Singapore Manufactured Products & Domestic Supply Price Indices September 2020**

[www.singstat.gov.sg](http://www.singstat.gov.sg)



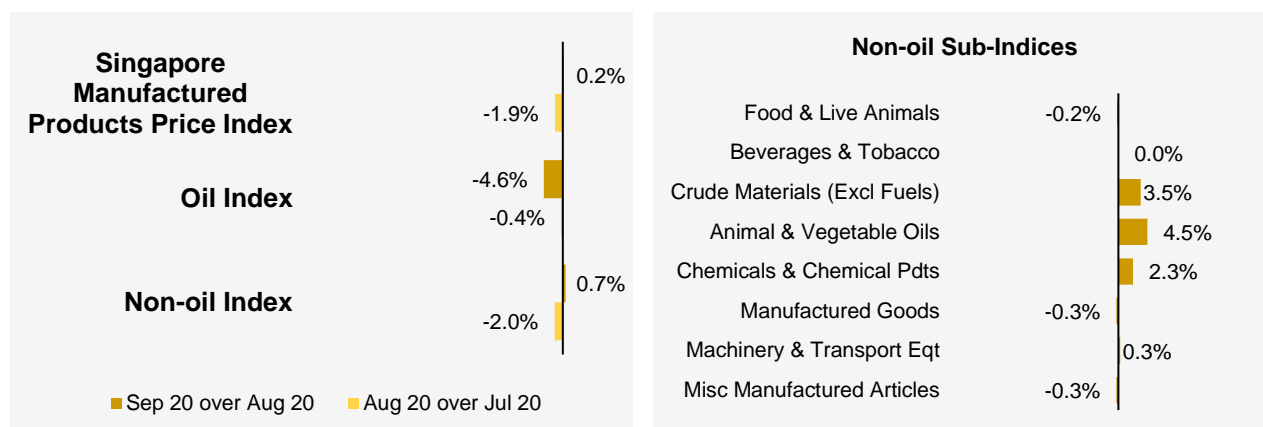
**SINGAPORE MANUFACTURED PRODUCTS &  
DOMESTIC SUPPLY PRICE INDICES, September 2020  
ISSN 2591-7447**

**© Department of Statistics, Ministry of Trade & Industry, Republic of Singapore**

Reproducing or quoting any part of this publication is permitted, provided this publication is accredited as the source. Please refer to the SingStat Website Terms of Use (<http://www.singstat.gov.sg/terms-of-use>) for more details on the conditions of use of this publication.

# Singapore Manufactured Products Price Index (2018 = 100) September 2020

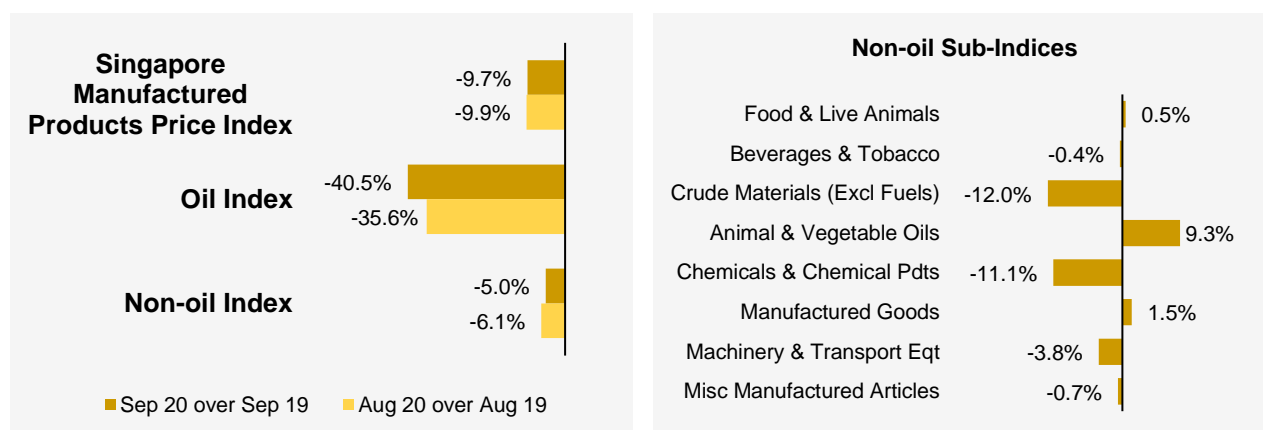
## Month-on-Month Change



The Singapore Manufactured Products Price Index rose 0.2% in September 2020, against the 1.9% decrease in August 2020. The Oil index fell 4.6%, extending the 0.4% decrease in the previous month. The Non-oil index rose 0.7%, in contrast to the 2.0% decline in August 2020.

For the Non-oil sub-indices, the increases were led by the Chemicals & Chemical Products (2.3%) index due mainly to higher prices of organic chemicals, and the Machinery & Transport Equipment (0.3%) index. The increases were partially moderated by the declines in Manufactured Goods (-0.3%) and Miscellaneous Manufactured Articles (-0.3%) indices.

## Year-on-Year Change

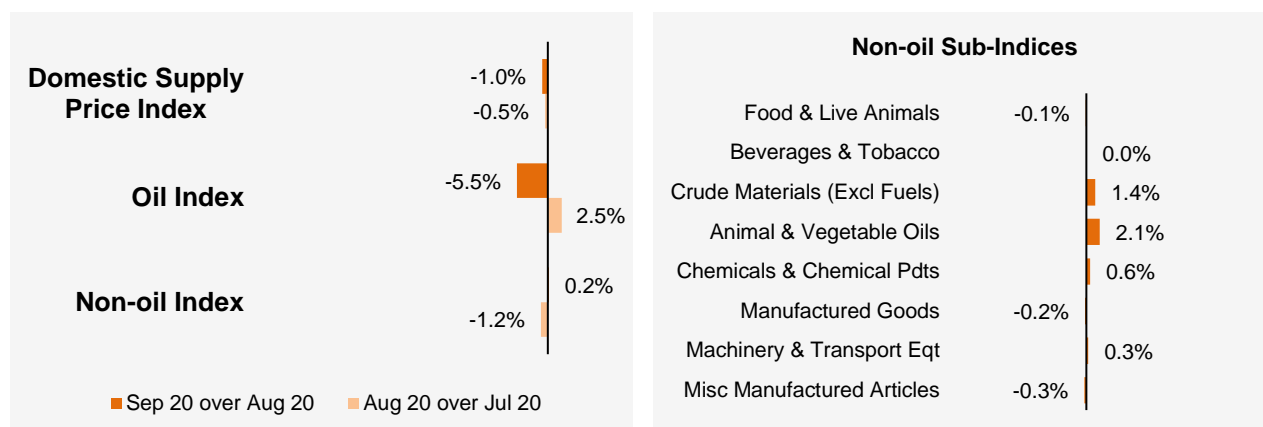


The Singapore Manufactured Products Price Index fell 9.7% in September 2020 from a year ago, following the 9.9% decrease in August 2020. The Oil and Non-oil indices fell 40.5% and 5.0% respectively.

For the Non-oil sub-indices, lower prices of Crude Materials (-12.0%), Chemicals & Chemical Products (-11.1%), Machinery & Transport Equipment (-3.8%), Miscellaneous Manufactured Articles (-0.7%) and Beverages & Tobacco (-0.4%) were partially offset by higher prices of Animal & Vegetable Oils (9.3%), Manufactured Goods (1.5%) and Food & Live Animals (0.5%).

# Domestic Supply Price Index (2018 = 100) September 2020

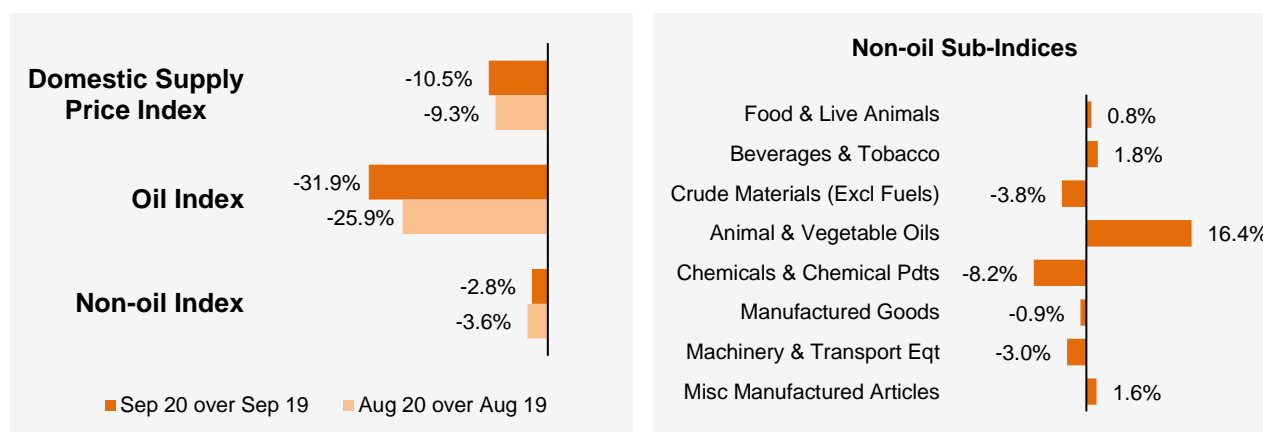
## Month-on-Month Change



The Domestic Supply Price Index fell 1.0% in September 2020, following the 0.5% decrease in August 2020. The Oil index fell 5.5%, in contrast to the 2.5% increase in the previous month. The Non-oil index rose 0.2%, against the 1.2% decrease in August 2020.

Among the Non-oil sub-indices, the increases led by the Chemicals & Chemical Products (0.6%) and Machinery & Transport Equipment (0.3%) indices were partially moderated by the declines in the Miscellaneous Manufactured Articles (-0.3%) and Manufactured Goods (-0.2%) indices.

## Year-on-Year Change



The Domestic Supply Price Index fell 10.5% in September 2020 from a year ago, following the 9.3% decrease in August 2020. The Oil and Non-oil indices declined 31.9% and 2.8% respectively.

For the Non-oil sub-indices, lower prices of Chemicals & Chemical Products (-8.2%), Crude Materials (-3.8%), Machinery & Transport Equipment (-3.0%) and Manufactured Goods (-0.9%) were partially offset by higher prices of Animal & Vegetable Oils (16.4%), Beverages & Tobacco (1.8%), Miscellaneous Manufactured Articles (1.6%) and Food & Live Animals (0.8%).

## Technical Note

The **Singapore Manufactured Products Price Index (SMPPI)** monitors price changes of locally manufactured commodities. The weights of the index are derived from the distribution of local production by commodity in 2018. Ex-factory prices are obtained from principal manufacturers of the items concerned.

The **Domestic Supply Price Index (DSPI)** is designed to measure the changes in the price level of goods manufactured locally or imported which are retained for use in the domestic economy by the government, business or household sectors. For imported products, the prices refer to those paid by importers in bringing the goods into Singapore, commonly referred to as c.i.f. prices. In the case of Singapore manufactured products, the quotations used are ex-factory prices. The weight for each commodity item is proportional to the value of its total supply or availability in the domestic market in 2018.

### Index Formula

The 2018-based series is compiled using the 'modified Laspeyres' formula where the weight reference period of 2017 preceded the price reference period of 2018. The geometric mean formula has been adopted in the computation of unweighted elementary aggregate price indices. The arithmetic mean formula is applied in compiling indices at higher levels of aggregation where weights of specific sub-indices are available.

### Measurement of Changes in Price Indices

*Change over previous month* compares the index of the month with that of the preceding month. Such comparisons measure the change in the price index between two consecutive months. They serve as useful short-term indicators of the price movements.

*Change over same period of previous year* measures change in the index over a twelve-month period. Such comparisons compare the movement in the price index between similar months in two consecutive years.

### Linking the Old 2012-Based Price Index Series to the New 2018-Based Price Index Series

The SMPPI and DSPI have been rebased from base year 2012 to base year 2018. To facilitate comparison of the historical price indices across base years, the old 2012-based series are linked to the new 2018-based series by re-scaling them via a Linked Coefficient. The Linked Coefficient is the ratio of the annual 2018-based index in 2018 to the annual 2012-based index in 2018.

Example : Linking the old Iron & Steel Index series for SMPPI prior to 2018, to the 2018-based Iron & Steel Index (2018=100)

#### 1) Calculate the linked coefficient

Year	Iron & Steel Index (2012=100)	Iron & Steel Index (2018=100)	Linked Coefficient
2018	78.0	100.0	$100.0 \div 78.0 = 1.282$

#### 2) Re-scaling the old series to the 2018-based series using the Linked Coefficient

Year	Month	Iron & Steel Index (2012=100)	Iron & Steel Index (2018=100)
2016	Dec	70.8	$70.8 \times 1.282 = 90.8$
2017	Jan	71.4	$71.4 \times 1.282 = 91.5$

### Linking Method for Maintaining the Old Index Reference Period

To continue the old 2012-based index series going forward in time, re-scale the new 2018-based index series to the old base year 2012 level, via a Linked Coefficient. The Linked Coefficient is the ratio of the annual 2012-based index in 2018 to the annual 2018-based index in 2018.

Example : Linking the new 2018-based Iron & Steel Index series for SMPPI to the 2012-based Iron & Steel Index (2012=100)

1) Calculate the linked coefficient

Year	Iron & Steel Index (2018=100)	Iron & Steel Index (2012=100)	Linked Coefficient
2018	100.0	78.0	$78.0 \div 100.0 = 0.780$

2) Re-scaling the new series to the 2012-based series using the Linked Coefficient

Year	Month	Iron & Steel Index (2018=100)	Iron & Steel Index (2012=100)
2019	Jan	105.6	$105.6 \times 0.780 = 82.4$
2019	Feb	104.7	$104.7 \times 0.780 = 81.7$

### Index Revision

The indices may be revised when late returns and amendments received from respondents are incorporated.

### Dissemination of Data

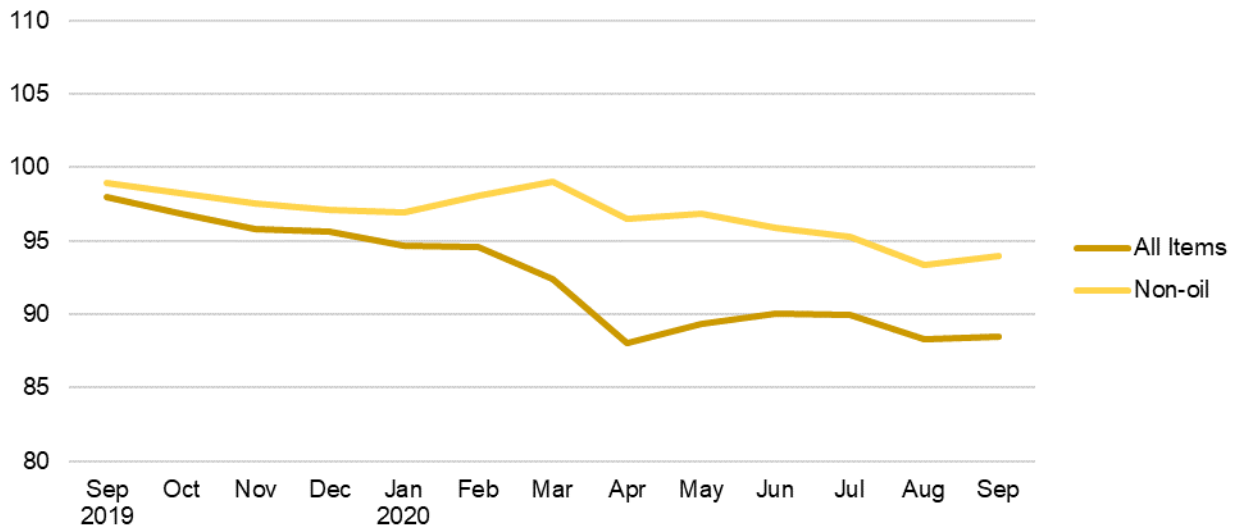
The Singapore Manufactured Products and Domestic Supply Price Indices are available on the SingStat Website ([www.singstat.gov.sg/tablebuilder](http://www.singstat.gov.sg/tablebuilder)). Excel tables for this month's report are available at <https://www.singstat.gov.sg/publications/economy/producer-price-indices> or through the QR code below:



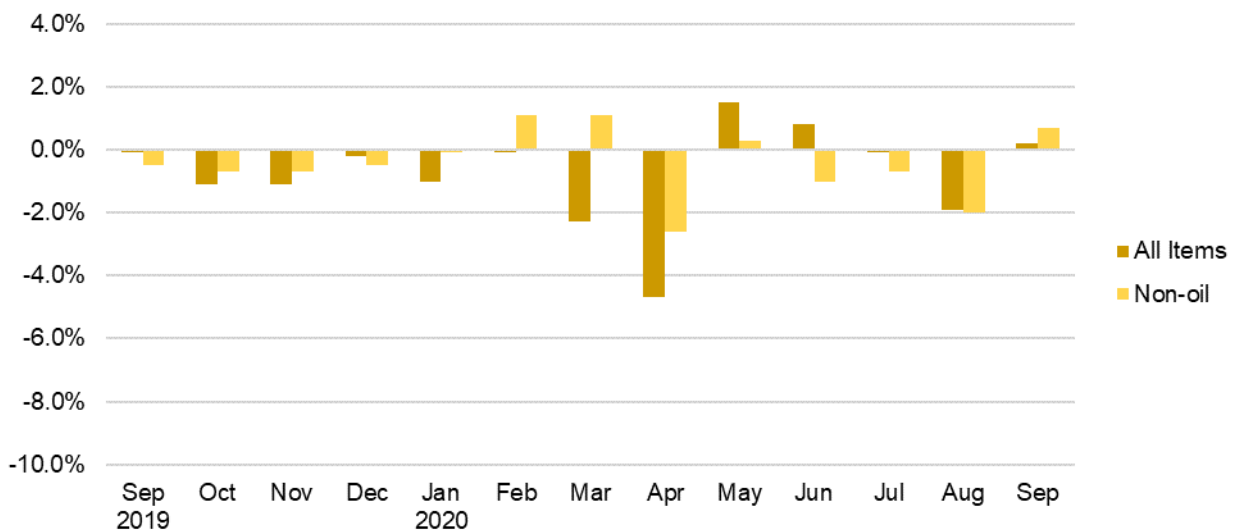


## Singapore Manufactured Products Price Index (2018 = 100) September 2020

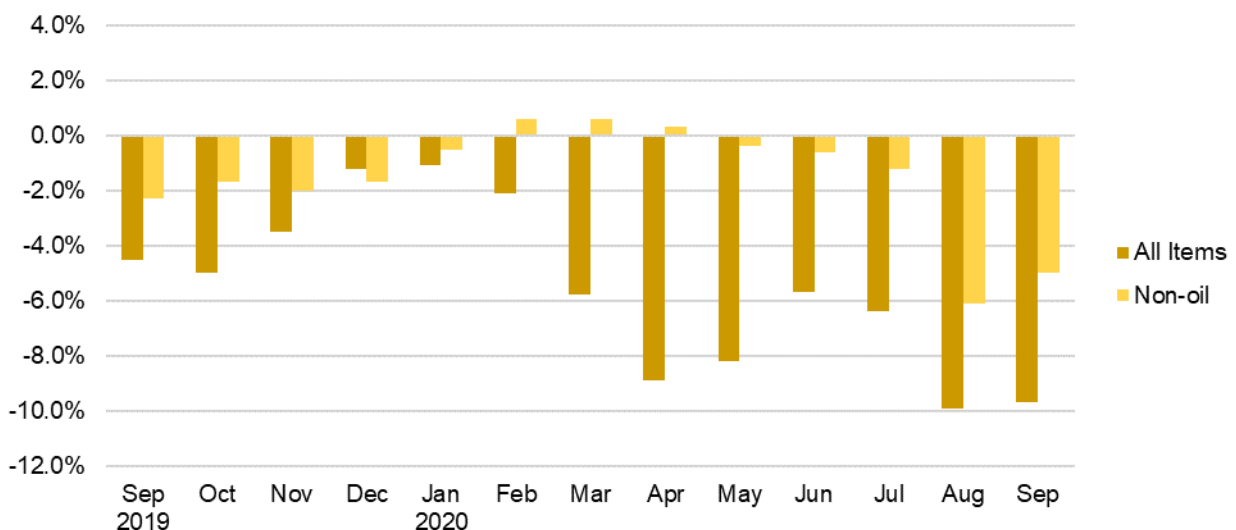
**Chart 1: Index**



**Chart 2: Month-on-Month Change**

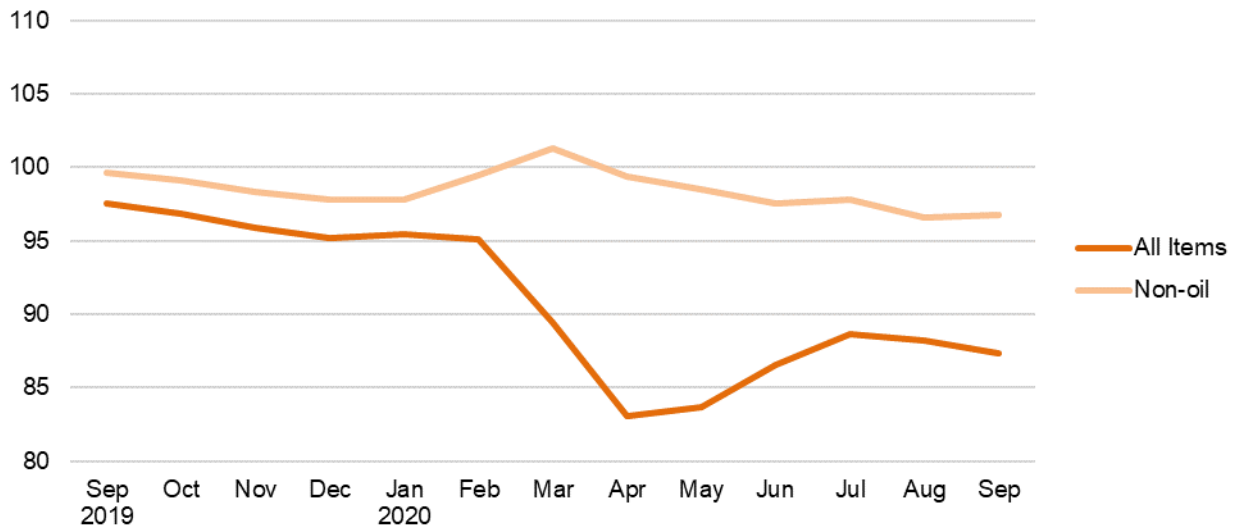


**Chart 3: Year-on-Year Change**

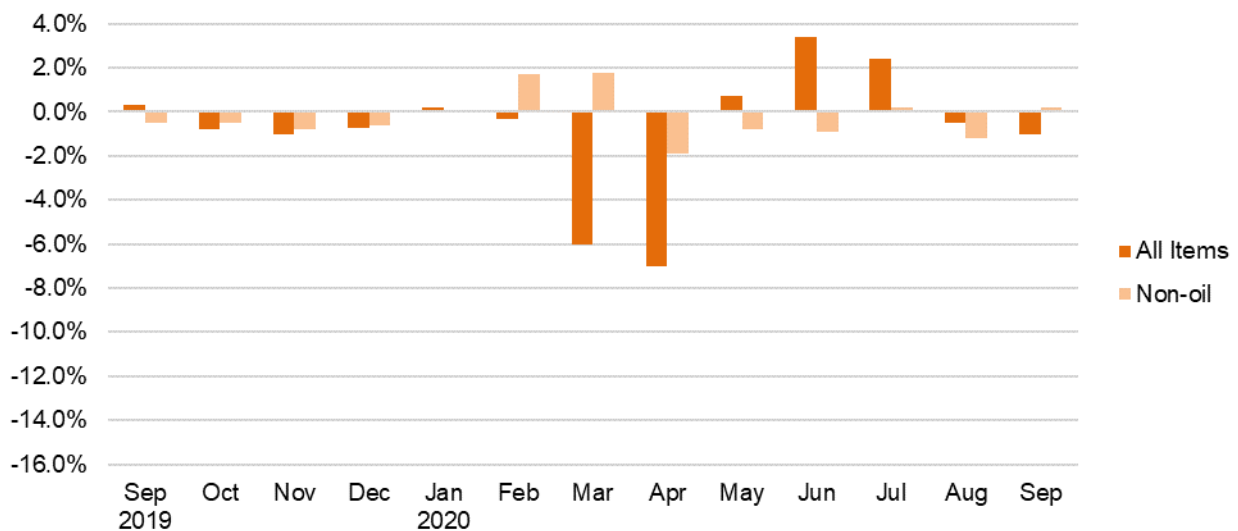


## Domestic Supply Price Index (2018 = 100) September 2020

**Chart 4: Index**



**Chart 5: Month-on-Month Change**



**Chart 6: Year-on-Year Change**

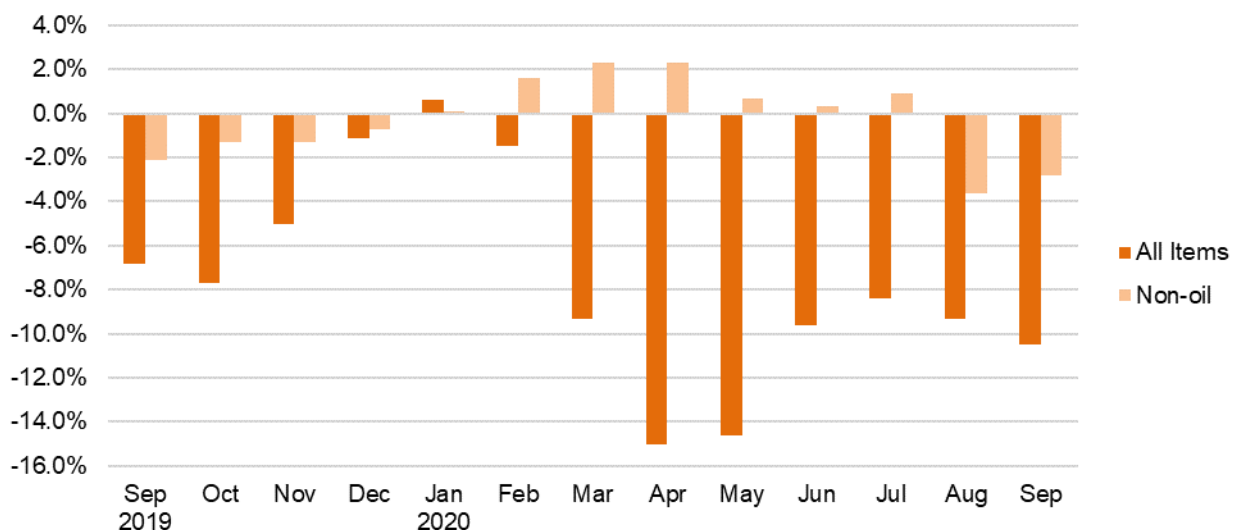




Table 1 Singapore Manufactured Products Price Index

September 2020

Commodity section / division	Weights	Index (2018=100)			% Change		
		Jul 2020	Aug 2020	Sep 2020	Aug 2020	Sep 2020	Sep 2020
					Jul 2020	Aug 2020	Sep 2019
<b>All Items</b>	<b>10,000</b>	<b>90.0</b>	<b>88.3</b>	<b>88.5</b>	<b>-1.9</b>	<b>0.2</b>	<b>-9.7</b>
<b>Non-oil Items</b>	<b>8,586</b>	<b>95.3</b>	<b>93.4</b>	<b>94.0</b>	<b>-2.0</b>	<b>0.7</b>	<b>-5.0</b>
Food & Live Animals	256	101.2	100.8	100.5	-0.4	-0.2	0.5
Meat & meat preparations	20	108.2	107.5	107.3	-0.6	-0.3	3.1
Dairy products & birds' eggs	15	106.4	105.2	105.3	-1.1	0.1	0.6
Fish seafood & preparations	5	95.8	95.6	95.0	-0.1	-0.7	0.1
Cereals & cereal preparations	42	104.2	104.1	104.1	-	-	3.3
Vegetables & fruit	3	100.0	100.0	100.0	-	-	0.7
Coffee, tea, cocoa, spices & manufactures	28	97.4	95.5	96.0	-1.9	0.5	2.8
Animal feeding stuff (excl unmilled cereals)	6	90.8	90.3	90.3	-0.5	-	-8.3
Miscellaneous food preparations	135	100.1	100.0	99.5	-0.2	-0.5	-0.9
Beverages & Tobacco	31	103.6	103.6	103.6	-	-	-0.4
Beverages	31	103.6	103.6	103.6	-	-	-0.4
Crude Materials (excl fuels)	56	82.2	80.0	82.8	-2.7	3.5	-12.0
Crude rubber	50	79.8	77.3	80.3	-3.1	3.9	-14.0
Cork & wood	1	100.9	100.9	100.9	-	-	-
Crude fertilizers & minerals	2	108.9	108.9	108.9	-	-	-
Metalliferous ores & metal scrap	4	100.1	100.3	101.9	0.2	1.5	4.5
Mineral Fuels, Lubricants & Related Materials	1,414	57.8	57.5	54.9	-0.4	-4.6	-40.5
Petroleum & products & related materials	1,386	57.8	57.5	54.8	-0.5	-4.7	-40.9
Gas	28	59.5	59.6	60.4	0.1	1.4	-11.9
Animal & Vegetable Oils, Fats & Waxes	14	88.9	90.4	94.5	1.7	4.5	9.3
Fixed vegetable fats & oils	14	88.9	90.4	94.5	1.7	4.5	9.3
Chemicals & Chemical Products	2,165	85.7	82.7	84.6	-3.5	2.3	-11.1
Organic chemicals	1,012	78.3	72.6	76.5	-7.3	5.4	-18.3
Inorganic chemicals	40	110.0	103.8	103.8	-5.7	-	3.3
Dyeing, tanning & colouring materials	22	101.4	102.0	101.3	0.6	-0.7	0.4
Medicinal & pharmaceutical products	232	87.3	86.8	86.9	-0.5	0.1	-6.5
Essential oils & perfume; toilet cleaning products	133	101.2	101.7	103.2	0.5	1.4	4.9
Plastics in primary forms	372	84.8	84.9	85.0	0.1	0.2	-7.8
Plastics in non-primary forms	34	98.7	97.8	97.6	-0.9	-0.2	-2.9
Chemical materials & products nes	320	96.9	95.8	95.4	-1.2	-0.4	-6.9
Manufactured Goods	284	105.1	104.9	104.6	-0.1	-0.3	1.5
Rubber manufactures nes	23	100.2	101.2	100.7	1.0	-0.5	0.3
Wood & cork manufactures (excl furniture)	8	98.4	98.2	98.2	-0.2	-	-1.5
Paper manufactures	34	96.3	96.1	96.1	-0.2	-	-5.3
Non-metal mineral manufactures nes	45	99.7	100.0	99.8	0.3	-0.2	-5.7
Iron & steel	53	105.6	106.3	104.4	0.7	-1.8	-1.4
Non-ferrous metals	20	96.4	95.9	98.8	-0.6	3.1	0.9
Manufactures of metals nes	99	113.7	112.8	112.6	-0.9	-0.2	9.6
Machinery & Transport Equipment	4,897	97.6	95.8	96.1	-1.9	0.3	-3.8
Power-generating machinery & equipment	8	86.1	85.0	84.1	-1.3	-1.0	-7.2
Machinery specialized for particular industries	571	98.7	98.3	98.2	-0.4	-0.1	-1.2
Metallworking machinery	18	107.7	107.6	107.5	-0.1	-0.2	0.3
General industrial machinery	85	102.2	101.9	101.7	-0.3	-0.2	0.4
Office machines & data-processing machines	880	106.1	104.7	104.4	-1.3	-0.3	-0.8
Telecommunication apparatus	45	97.1	95.4	95.1	-1.8	-0.3	-0.7
Electrical machinery apparatus nes, electrical parts	3,271	94.9	92.7	93.3	-2.4	0.6	-5.2
Road vehicles	20	99.5	99.1	97.9	-0.3	-1.2	-5.1
Miscellaneous Manufactured Articles	883	101.5	100.7	100.4	-0.8	-0.3	-0.7
Furniture, bedding, mattresses, cushions & others	16	100.1	100.1	100.1	-	-	-
Travel goods, handbags & similar containers	1	97.9	99.3	102.9	1.5	3.6	7.6
Professional scientific & controlling instruments	516	101.0	99.2	99.0	-1.8	-0.2	-2.3
Photographic & optical goods nes; watches & clocks	48	99.5	98.7	98.5	-0.8	-0.2	-1.1
Miscellaneous manufactured articles nes	303	102.9	103.7	103.1	0.8	-0.6	2.0

Figures may not sum to total due to rounding.

Table 2 Domestic Supply Price Index

## September 2020

Commodity section / division	Weights	Index (2018=100)			% Change		
		Jul 2020	Aug 2020	Sep 2020	Aug 2020	Sep 2020	Sep 2020
					Jul 2020	Aug 2020	Sep 2019
<b>All Items</b>	<b>10,000</b>	<b>88.6</b>	<b>88.2</b>	<b>87.3</b>	<b>-0.5</b>	<b>-1.0</b>	<b>-10.5</b>
<b>Non-oil Items</b>	<b>7,212</b>	<b>97.8</b>	<b>96.6</b>	<b>96.8</b>	<b>-1.2</b>	<b>0.2</b>	<b>-2.8</b>
Food & Live Animals	319	103.8	103.2	103.1	-0.5	-0.1	0.8
Live animals	10	100.0	100.1	100.3	0.1	0.2	1.7
Meat & meat preparations	56	107.6	106.9	108.3	-0.6	1.3	3.5
Dairy products & birds' eggs	43	110.4	109.4	106.2	-0.9	-2.9	-1.5
Fish seafood & preparations	42	95.8	94.4	94.2	-1.6	-0.2	-2.5
Cereals & cereal preparations	51	103.4	103.0	102.8	-0.3	-0.2	1.7
Vegetables & fruit	40	107.7	107.2	107.9	-0.4	0.7	0.2
Sugar, sugar preparations & honey	13	106.5	101.7	101.3	-4.5	-0.4	2.5
Coffee, tea, cocoa, spices & manufactures	27	97.6	100.2	100.5	2.7	0.3	5.3
Animal feeding stuff (excl unmilled cereals)	3	101.5	101.3	101.2	-0.2	-0.1	1.9
Miscellaneous food preparations	35	99.9	100.0	99.9	-	-0.1	-1.7
Beverages & Tobacco	30	104.7	104.6	104.6	-	-	1.8
Beverages	28	105.5	105.5	105.5	-	-	2.7
Tobacco & manufactures	2	94.2	93.8	93.8	-0.4	-	-8.8
Crude Materials (excl fuels)	85	94.4	93.5	94.8	-0.9	1.4	-3.8
Oil seeds & oleaginous fruits	3	113.3	113.9	113.4	0.6	-0.5	8.6
Crude rubber	31	81.4	79.0	81.7	-2.9	3.4	-12.6
Cork & w ood	3	94.3	94.3	94.3	-	-	-2.8
Crude fertilizers & minerals	34	103.2	103.0	102.9	-0.2	-0.2	-0.9
Metalliferous ores & metal scrap	5	93.1	94.7	98.0	1.7	3.5	8.6
Crude animal & vegetable materials nes	10	99.8	99.6	101.7	-0.1	2.0	2.4
Mineral Fuels, Lubricants & Related Materials	2,788	64.9	66.5	62.8	2.5	-5.5	-31.9
Petroleum & products & related materials	2,669	65.3	66.9	63.0	2.4	-5.9	-31.9
Gas	119	54.6	56.9	59.1	4.1	4.0	-32.1
Animal & Vegetable Oils, Fats & Waxes	42	98.4	102.1	104.2	3.8	2.1	16.4
Fixed vegetable fats & oils	42	98.4	102.1	104.2	3.8	2.1	16.4
Chemicals & Chemical Products	1,142	86.5	86.2	86.7	-0.3	0.6	-8.2
Organic chemicals	459	69.3	68.9	70.4	-0.5	2.1	-18.4
Inorganic chemicals	54	109.2	107.8	106.2	-1.3	-1.5	3.5
Dyeing, tanning & colouring materials	20	109.1	108.3	108.1	-0.7	-0.2	-1.4
Medicinal & pharmaceutical products	95	99.6	100.0	99.8	0.4	-0.3	-0.2
Essential oils & perfume; toilet cleaning products	62	100.6	101.8	103.2	1.3	1.3	3.8
Plastics in primary forms	158	87.8	87.9	87.8	0.1	-0.1	-7.3
Plastics in non-primary forms	32	102.8	102.3	101.6	-0.5	-0.7	-1.0
Chemical materials & products nes	263	99.4	98.7	98.6	-0.7	-0.1	-3.3
Manufactured Goods	490	102.0	101.4	101.3	-0.6	-0.2	-0.9
Rubber manufactures nes	15	104.8	101.7	101.4	-3.0	-0.3	-0.5
Wood & cork manufactures (excl furniture)	6	98.4	98.2	98.2	-0.1	-	-1.4
Paper manufactures	53	96.6	95.0	95.0	-1.6	-0.1	-5.0
Textile manufactures	15	103.3	100.2	100.0	-3.0	-0.2	-3.4
Non-metal mineral manufactures nes	123	102.9	102.4	102.0	-0.4	-0.5	-1.2
Iron & steel	110	100.3	100.1	98.9	-0.3	-1.2	-3.2
Non-ferrous metals	80	103.9	104.6	105.9	0.6	1.3	3.1
Manufactures of metals nes	86	104.0	103.1	103.3	-0.8	0.2	1.9
Machinery & Transport Equipment	4,302	98.5	96.7	97.0	-1.8	0.3	-3.0
Pow er-generating machinery & equipment	205	113.6	112.2	111.8	-1.3	-0.3	4.6
Machinery specialized for particular industries	189	100.8	99.8	99.6	-0.9	-0.2	-1.1
Metal w orking machinery	6	105.6	104.3	104.3	-1.2	-	2.4
General industrial machinery	90	101.6	100.8	100.8	-0.8	-0.1	0.4
Office machines & data-processing machines	192	101.1	99.3	99.0	-1.7	-0.3	-2.4
Telecommunication apparatus	53	84.9	83.8	83.8	-1.3	0.1	-11.8
Electrical machinery apparatus nes, electrical parts	3,456	97.4	95.4	95.8	-2.0	0.4	-3.6
Road vehicles	111	101.8	101.9	101.8	0.2	-0.2	-0.8
Miscellaneous Manufactured Articles	802	104.7	104.4	104.1	-0.3	-0.3	1.6
Prefab building, sanitary plumbing, lighting nes	7	98.2	98.2	98.2	-	-	-0.1
Furniture, bedding, mattresses, cushions & others	23	105.7	105.2	105.2	-0.5	-0.1	0.8
Travel goods, handbags & similar containers	39	99.3	99.1	101.0	-0.2	1.9	-2.4
Articles of apparel & clothing accessories	25	101.5	101.0	100.9	-0.5	-0.1	0.7
Footw ear	14	99.9	102.4	103.5	2.5	1.0	4.3
Professional scientific & controlling instruments	409	102.4	100.9	100.5	-1.5	-0.4	-1.5
Photographic & optical goods nes; w atches & clocks	75	107.3	106.9	106.7	-0.3	-0.2	5.8
Miscellaneous manufactured articles nes	211	110.1	111.8	111.1	1.5	-0.6	6.8

Figures may not sum to total due to rounding.

**Table 3 Singapore Manufactured Products Price Index**

Section	All Items	Non-oil Items	Food & Live Animals	Beverages & Tobacco	Crude Materials	Mineral Fuels	Animal & Vegetable Oils, Fats & Waxes	Chemicals & Chemical Products	Manu- factured Goods	Machinery & Transport Equipment	Misc. Manu- factured Articles
Weights	10,000	8,586	256	31	56	1,414	14	2,165	284	4,897	883
<b>Index (2018=100)</b>											
2016	92.2	97.9	99.7	103.0	94.8	66.4	113.6	88.0	96.2	105.2	95.4
2017	95.8	98.6	99.5	98.4	94.7	83.0	119.3	92.5	97.8	103.0	97.2
2018	100.0	100.0	100.0	100.0	100.0	100.0	100.0	100.0	100.0	100.0	100.0
2019	96.7	97.6	99.8	103.5	94.5	91.3	88.5	95.3	102.2	97.8	100.2
2019											
Sep	98.0	98.9	100.1	104.0	94.2	92.3	86.5	95.2	103.1	99.8	101.1
Oct	96.9	98.2	100.7	104.0	94.4	88.4	87.2	94.3	103.9	99.2	100.3
Nov	95.8	97.6	100.9	104.0	93.9	85.0	87.3	93.8	105.0	98.3	99.6
Dec	95.6	97.1	101.2	104.0	93.3	86.8	88.4	92.4	105.8	98.0	99.3
2020											
Jan	94.7	96.9	101.2	103.6	93.8	80.8	94.0	93.3	107.4	97.4	99.0
Feb	94.6	98.0	101.6	103.6	94.7	73.7	97.7	92.4	107.7	99.4	100.3
Mar	92.4	99.1	102.5	103.6	95.3	52.1	100.8	89.5	106.6	102.2	101.9
Apr	88.1	96.5	102.2	103.6	92.8	36.8	99.1	85.4	105.7	99.5	102.3
May	89.3	96.8	102.0	103.6	92.0	43.9	100.3	87.8	106.0	99.1	102.0
Jun	90.1	95.9	101.6	103.6	91.5	54.7	91.0	88.0	104.9	97.5	101.8
Jul	90.0	95.3	101.2	103.6	82.2	57.8	88.9	85.7	105.1	97.6	101.5
Aug	88.3	93.4	100.8	103.6	80.0	57.5	90.4	82.7	104.9	95.8	100.7
Sep	88.5	94.0	100.5	103.6	82.8	54.9	94.5	84.6	104.6	96.1	100.4
<b>Percentage Change over same period of previous year (%)</b>											
2017	3.8	0.7	-0.2	-4.4	-0.1	25.0	5.0	5.1	1.6	-2.2	1.9
2018	4.4	1.4	0.5	1.6	5.6	20.5	-16.2	8.1	2.3	-2.9	2.9
2019	-3.3	-2.4	-0.2	3.5	-5.5	-8.7	-11.5	-4.7	2.2	-2.2	0.2
2019											
Sep	-4.5	-2.3	-	4.1	-11.7	-16.8	-10.6	-6.2	2.1	-1.3	0.3
Oct	-5.0	-1.7	0.3	4.1	-10.0	-22.8	-8.6	-6.9	2.8	0.2	-0.7
Nov	-3.5	-2.0	1.0	4.0	-8.3	-13.3	-5.4	-7.0	3.7	-0.2	-1.3
Dec	-1.2	-1.7	0.9	4.0	-8.0	2.0	-3.2	-7.5	4.1	0.5	-1.5
2020											
Jan	-1.1	-0.5	1.7	1.8	-4.6	-5.0	4.4	-4.2	6.2	0.7	-1.1
Feb	-2.1	0.6	2.2	1.8	-2.3	-19.7	9.0	-4.9	6.7	2.6	0.5
Mar	-5.8	0.6	2.8	1.8	-1.0	-45.6	13.2	-7.3	5.2	3.3	2.0
Apr	-8.9	0.3	3.2	-0.6	-0.4	-62.9	10.6	-10.9	5.6	4.4	2.5
May	-8.2	-0.4	2.5	-0.5	-2.2	-55.1	12.3	-8.8	5.6	2.5	1.0
Jun	-5.7	-0.6	2.4	-0.4	-1.7	-38.7	2.5	-6.9	4.2	1.3	1.2
Jul	-6.4	-1.2	2.0	-0.4	-11.4	-39.0	0.7	-8.8	3.5	1.3	1.6
Aug	-9.9	-6.1	1.2	-0.4	-15.1	-35.6	2.5	-13.4	2.9	-4.9	-0.6
Sep	-9.7	-5.0	0.5	-0.4	-12.0	-40.5	9.3	-11.1	1.5	-3.8	-0.7

**Table 4 Domestic Supply Price Index**

Section	All Items	Non-oil Items	Food & Live Animals	Beverages & Tobacco	Crude Materials	Mineral Fuels	Animal & Vegetable Oils, Fats & Waxes	Chemicals & Chemical Products	Manu- factured Goods	Machinery & Transport Equipment	Misc. Manu- factured Articles
Weights	10,000	7,212	319	30	85	2,788	42	1,142	490	4,302	802
<b>Index (2018=100)</b>											
2016	87.8	99.2	99.2	100.6	99.7	61.6	111.5	90.4	93.2	103.2	100.7
2017	94.0	100.2	101.0	98.9	98.8	79.7	114.1	95.5	96.8	102.2	101.3
2018	100.0	100.0	100.0	100.0	100.0	100.0	100.0	100.0	100.0	100.0	100.0
2019	96.7	98.2	101.3	102.1	98.4	93.0	90.9	94.1	101.5	98.2	101.0
2019											
Sep	97.6	99.6	102.3	102.8	98.6	92.3	89.6	94.5	102.1	100.0	102.5
Oct	96.8	99.1	102.8	102.5	98.5	90.9	90.0	93.6	102.2	99.4	102.0
Nov	95.9	98.3	102.4	102.3	98.5	89.5	94.1	92.5	102.4	98.6	101.3
Dec	95.2	97.8	102.7	102.2	98.5	88.5	99.0	90.4	102.3	98.2	101.0
2020											
Jan	95.4	97.8	103.6	102.7	98.9	89.3	103.4	91.3	101.7	97.9	101.1
Feb	95.1	99.5	103.7	103.7	99.5	83.9	102.5	92.5	103.0	100.0	102.6
Mar	89.4	101.3	103.9	104.2	100.0	58.6	100.3	90.7	103.1	103.0	104.9
Apr	83.1	99.3	105.1	104.9	98.6	41.1	98.0	85.7	102.5	100.9	106.1
May	83.7	98.5	104.9	104.8	98.3	45.5	95.8	85.1	102.3	99.7	105.8
Jun	86.5	97.6	103.6	105.2	97.9	58.0	97.0	86.4	101.8	98.2	104.8
Jul	88.6	97.8	103.8	104.7	94.4	64.9	98.4	86.5	102.0	98.5	104.7
Aug	88.2	96.6	103.2	104.6	93.5	66.5	102.1	86.2	101.4	96.7	104.4
Sep	87.3	96.8	103.1	104.6	94.8	62.8	104.2	86.7	101.3	97.0	104.1
<b>Percentage Change over same period of previous year (%)</b>											
2017	7.0	1.0	1.9	-1.7	-0.9	29.4	2.4	5.7	3.8	-1.0	0.6
2018	6.4	-0.2	-1.0	1.1	1.2	25.5	-12.4	4.7	3.3	-2.1	-1.3
2019	-3.3	-1.8	1.3	2.1	-1.6	-7.0	-9.1	-5.9	1.5	-1.8	1.0
2019											
Sep	-6.8	-2.1	1.7	2.6	-4.6	-17.9	-7.3	-7.7	1.6	-1.9	1.7
Oct	-7.7	-1.3	2.1	2.4	-4.0	-22.1	-5.0	-8.2	1.6	-0.4	1.1
Nov	-5.0	-1.3	2.2	2.1	-3.2	-14.3	3.6	-7.0	2.0	-0.7	0.6
Dec	-1.1	-0.7	2.3	2.0	-2.1	-2.4	9.5	-6.2	1.4	-	0.6
2020											
Jan	0.6	0.1	2.9	1.4	-0.3	2.0	13.1	-4.2	1.7	0.5	0.9
Feb	-1.5	1.6	3.8	2.5	1.0	-10.1	12.5	-3.4	2.1	2.4	2.8
Mar	-9.3	2.3	4.2	2.8	1.6	-39.9	11.5	-5.2	1.5	3.5	5.0
Apr	-15.0	2.3	5.0	2.9	1.0	-58.7	8.1	-10.1	1.4	4.8	6.0
May	-14.6	0.7	4.2	2.7	0.1	-54.0	6.7	-10.8	0.7	2.6	4.8
Jun	-9.6	0.3	2.5	3.2	0.2	-36.9	9.7	-7.8	0.6	1.5	3.7
Jul	-8.4	0.9	2.2	2.3	-3.1	-32.5	12.9	-7.0	1.0	2.2	3.7
Aug	-9.3	-3.6	1.3	1.7	-5.6	-25.9	14.2	-8.6	-	-4.2	1.8
Sep	-10.5	-2.8	0.8	1.8	-3.8	-31.9	16.4	-8.2	-0.9	-3.0	1.6

### **NOTATIONS**

- nes not elsewhere specified
- nil or negligible

### **NOTES**

The Singapore Manufactured Products and Domestic Supply Price Indices report contains statistics that are the most recent available at the time of its preparation.

Some statistics, particularly those for the most recent time periods, are provisional and may be subject to revision in later issues.