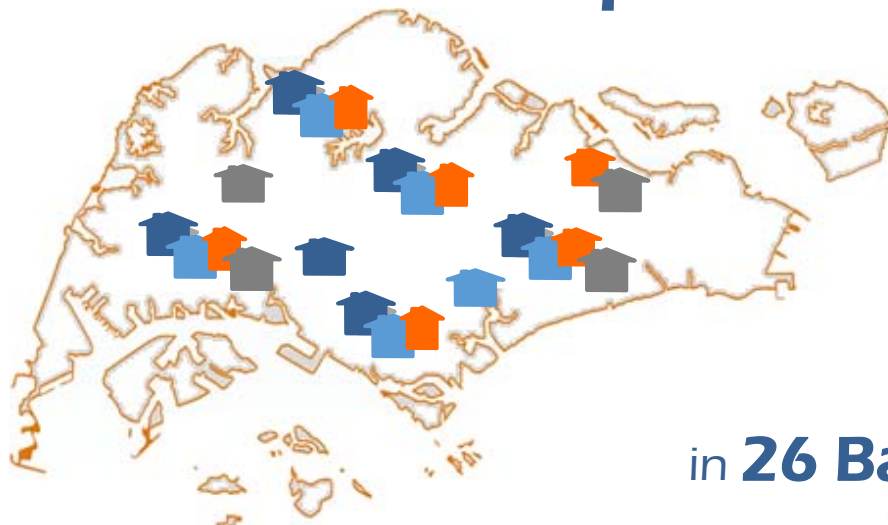


Infographics: Highlights of Household Expenditure Survey 2012/13



Covered **11,050 Dwellings**

in **26 Batches**



Over the course of **1 year**

Oct 2012









Sep 2013



Selected households were surveyed over **2 weeks**

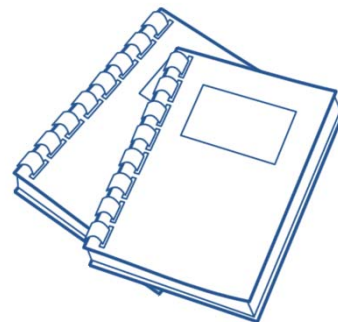
How it compares with other countries...

Singapore's HES of 11,050 dwellings is a relatively large representative sample of the households

| | Singapore | Australia | Canada | Japan | United Kingdom | United States |
|---|---|---|---|--|---|---|
| |  |  |  |  |  |  |
| Population * (Million)  | 5.2 | 22.3 | 34.3 | 127.8 | 63.3 | 311.6 |
| Sample in Latest HES (Number of Households)  | 11,050 | 9,800 | 17,600 | 57,000 | 11,500 | 7,000 |

* Refers to 2011 data.

Data were collected via...

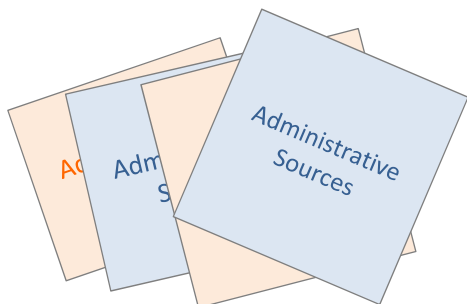


Expenditure
Diary Recording
by respondents

and

Supplemented with...

Administrative Sources



to **Improve Data Quality**
and
Reduce Response Burden

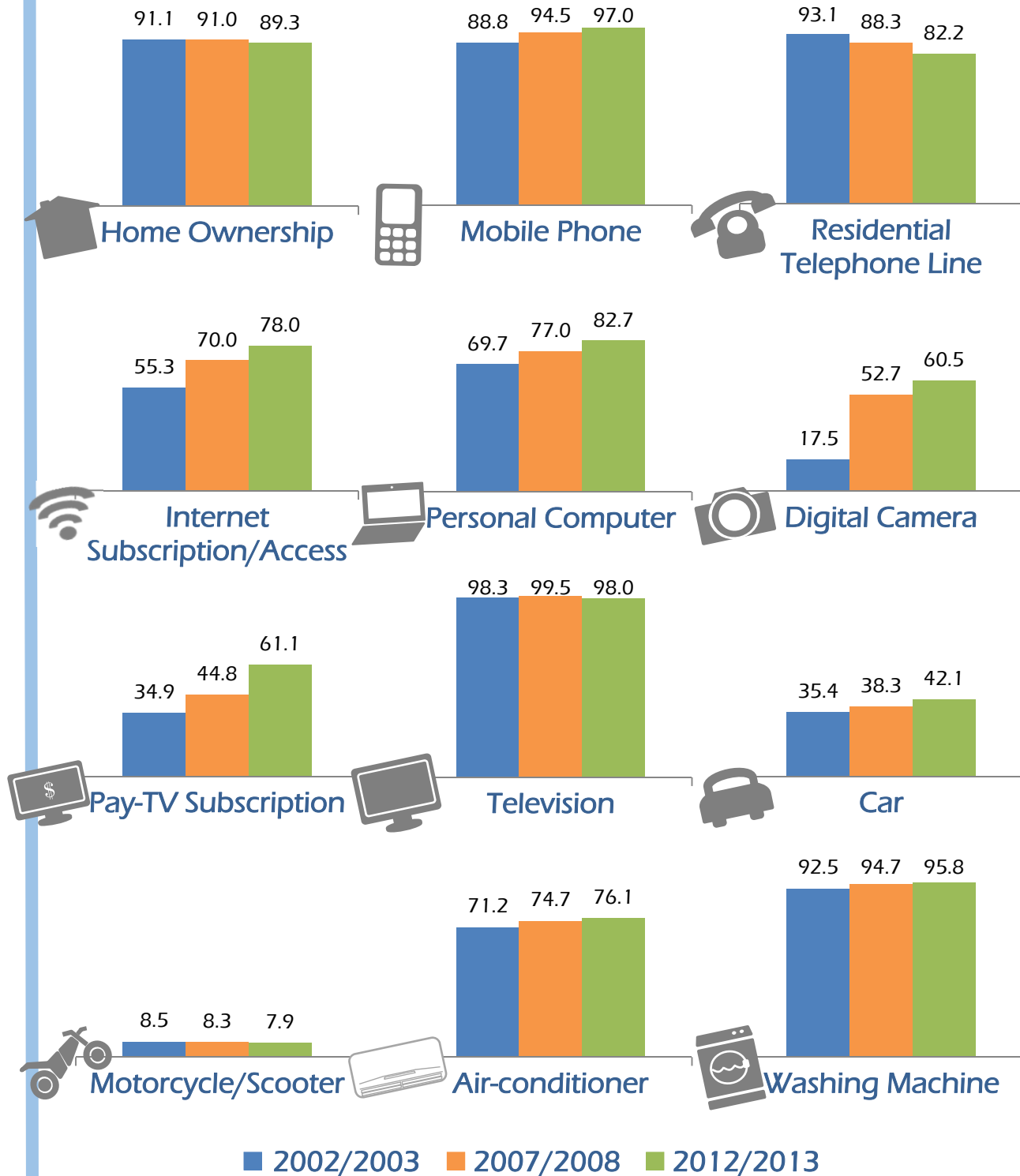


HES 2012/13
Report

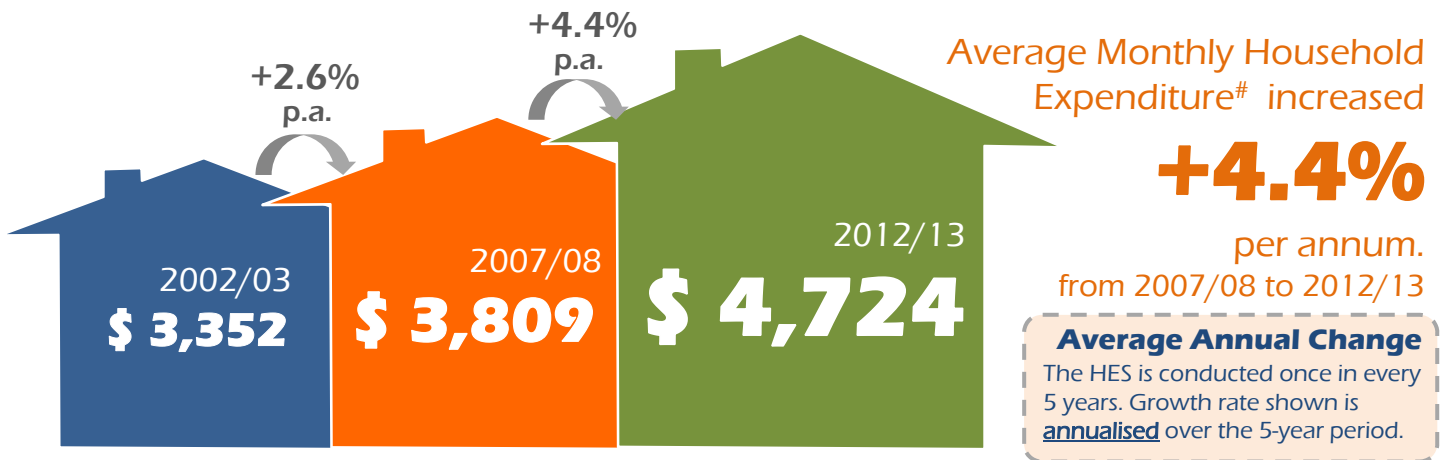


OWNERSHIP of Consumer Durables

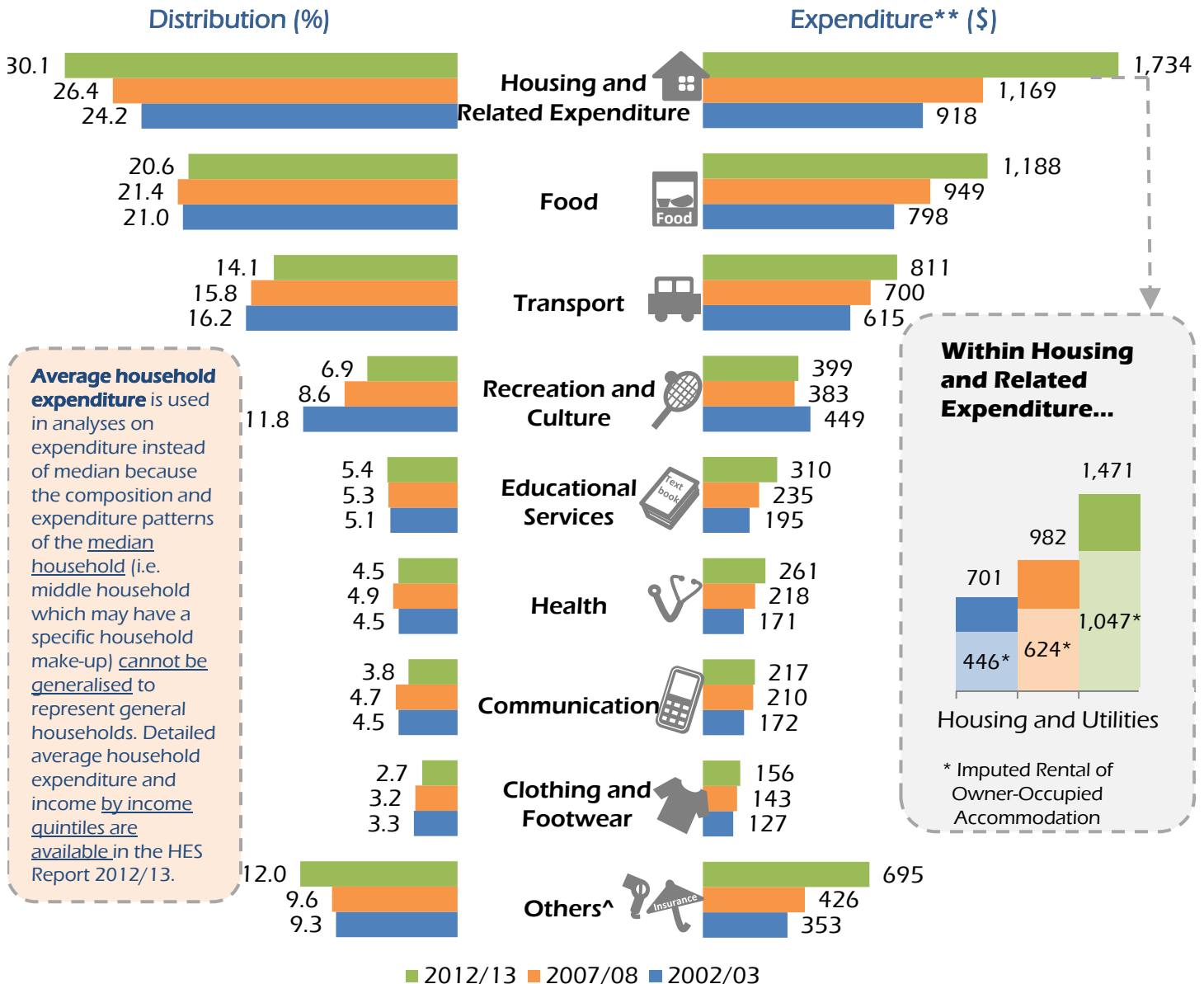
Per Cent



HOUSEHOLD EXPENDITURE



Expenditure excludes imputed rental of owner-occupied accommodation. As it is neither a cash outlay nor income, imputed rent is included only when analysing the detailed share of household expenditure by goods and services.



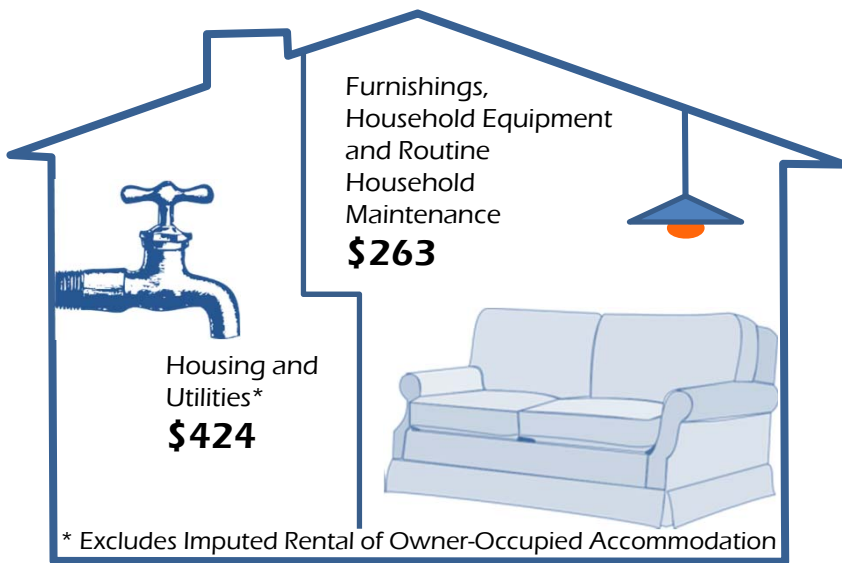
Average household expenditure is used in analyses on expenditure instead of median because the composition and expenditure patterns of the median household (i.e. middle household which may have a specific household make-up) cannot be generalised to represent general households. Detailed average household expenditure and income by income quintiles are available in the HES Report 2012/13.

** Expenditure includes imputed rental of owner-occupied accommodation.

^ Others include expenditure on miscellaneous goods and services, including personal care services such as hairdressing, social support services and insurance, and expenditure on alcoholic beverages and tobacco and accommodation services.

Key **2012/13** Average Monthly Household Expenditure on...

Housing and Related Expenditure



Recreation and Culture

Package Tours and Holiday Expenses **\$154**



Recreational and Cultural Services **\$138**



Educational Services

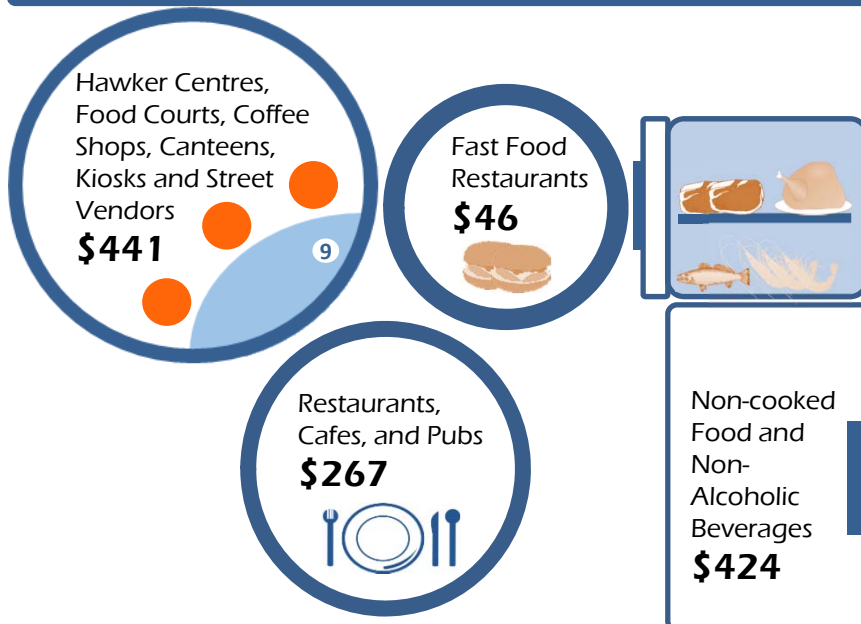
University Education **\$105**



Private Tuition and Other Educational Courses **\$106**



Food



Health

Outpatient Services **\$117**



Medical Products, Appliances and Equipment **\$78**



Communication

Telephone and Telefax Services **\$205**



Clothing and Footwear

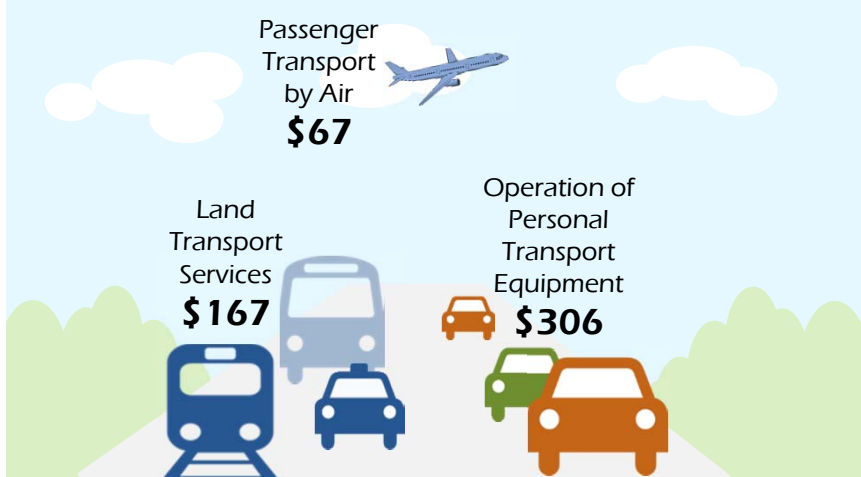
Clothing **\$122**



Footwear **\$34**



Transport



Others

Personal Care **\$138**



Insurance **\$294**



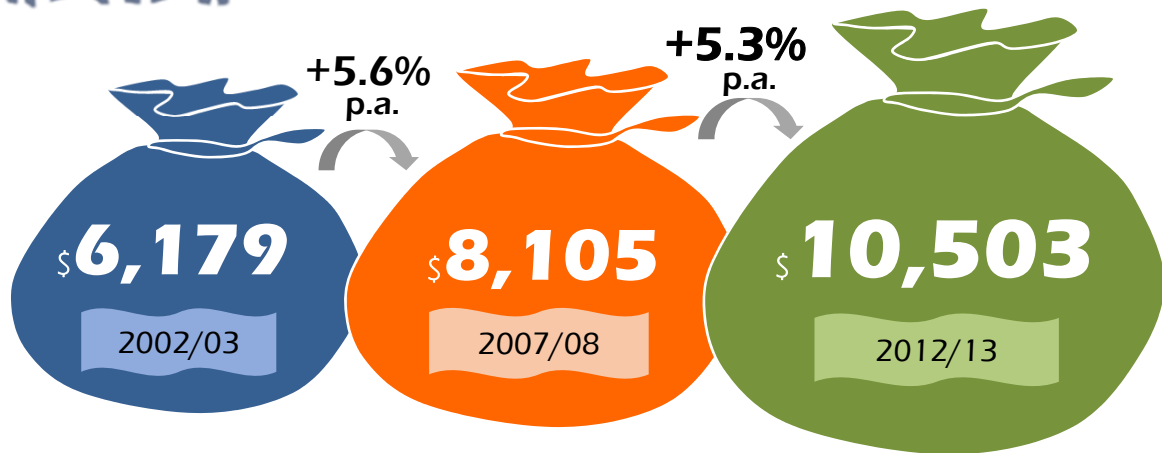
Household Income

from all sources



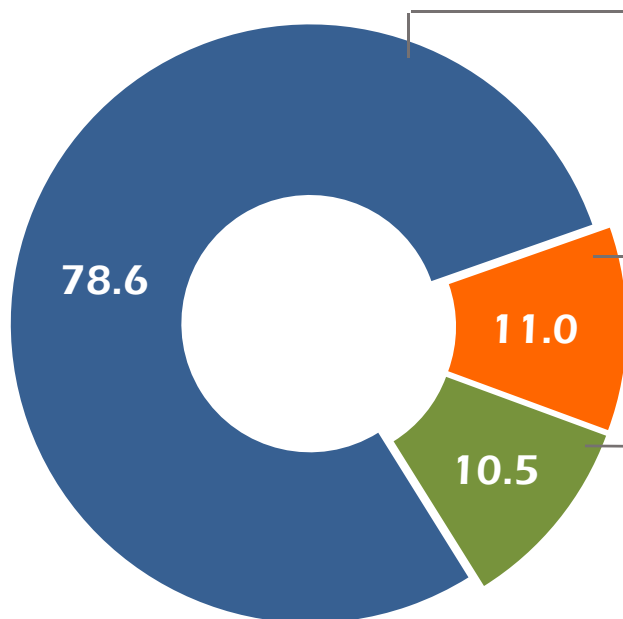
Average Monthly Household Income*

increased **5.3%** per annum from 2007/08 to 2012/13



* While household income is generally compared with household expenditure at the overall household level, income and expenditure on a per member basis provide further insights to the comparison over time where changes could be partly attributed to changes in household size. Both sets of detailed data are [available in the HES 2012/13 Report](#).

Employment Income contributed to **79%** of total household income from all sources



Employment Income

| | | |
|----------------|----------------|----------------|
| \$5,288 | \$6,805 | \$8,251 |
| 2002/03 | 2007/08 | 2012/13 |

Average Annual Growth: **+3.9%**
(2007/08 – 2012/13)

Business Income

| | | |
|--------------|--------------|----------------|
| \$608 | \$892 | \$1,151 |
| 2002/03 | 2007/08 | 2012/13 |

Average Annual Growth: **+5.2%**
(2007/08 – 2012/13)

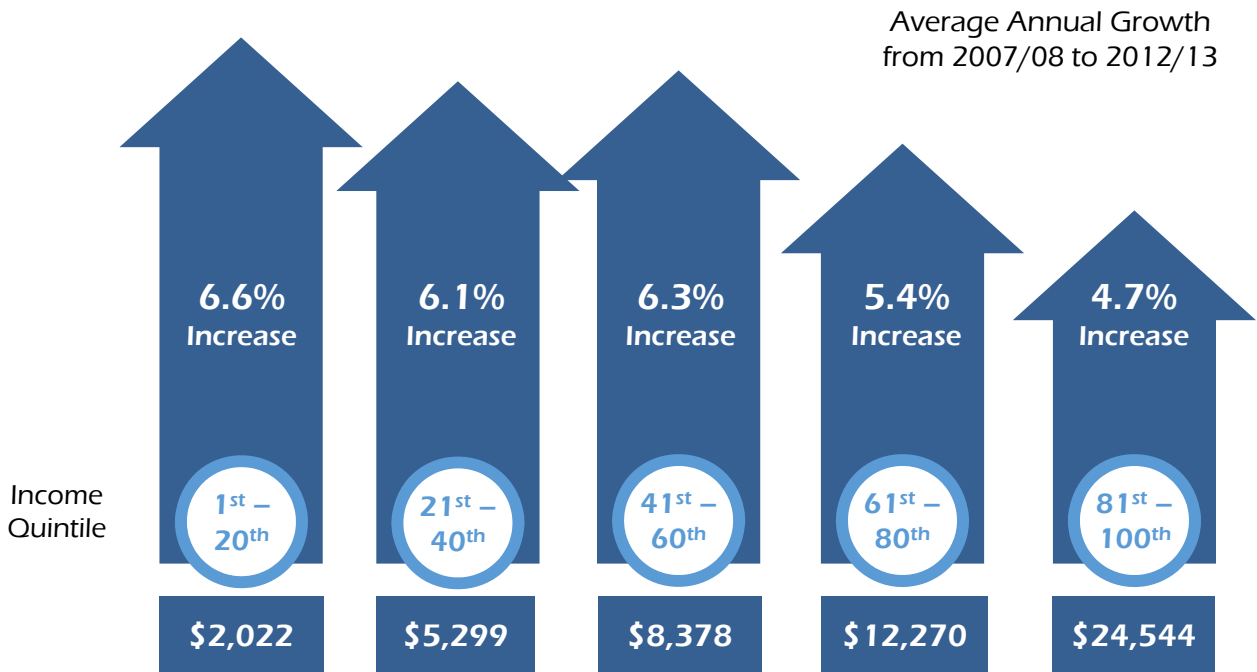
Non-Work Income

| | | |
|--------------|--------------|----------------|
| \$282 | \$408 | \$1,101 |
| 2002/03 | 2007/08 | 2012/13 |

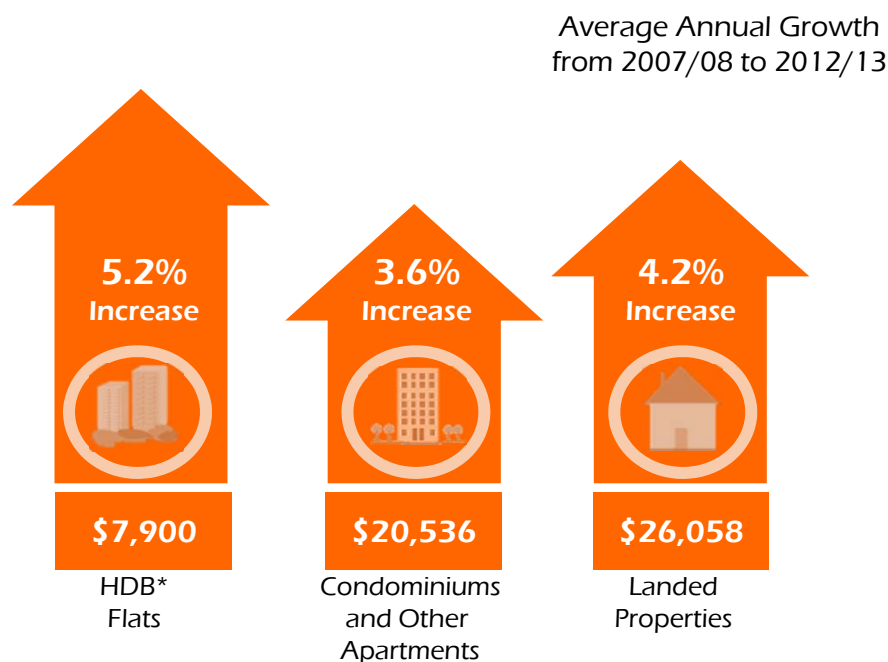
Average Annual Growth: **+22.0%**
(2007/08 – 2012/13)

Over the Last 5 Years...

Growth in Average Monthly Household Income for **All Income Groups**



Higher Income Growth among Households staying in **HDB Flats***

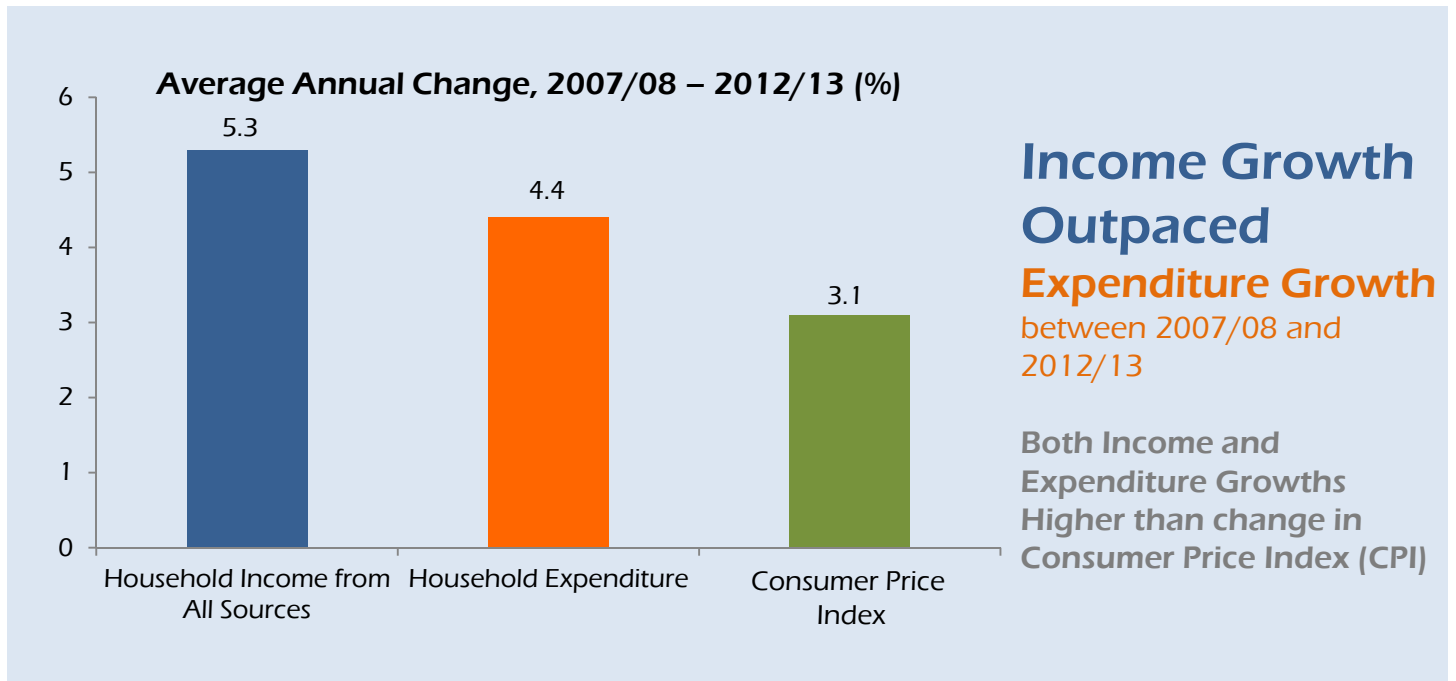


*HDB flats include non-privatised Housing and Urban Development Corporation (HUDC) flats.

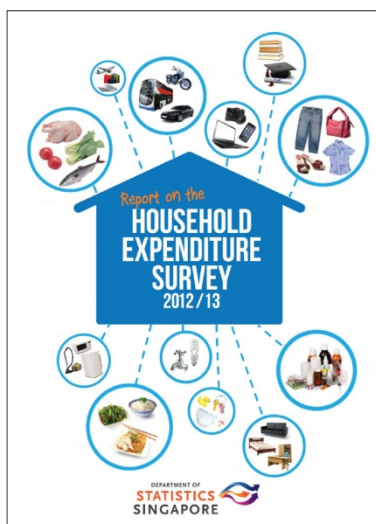
Income and Expenditure Growth

Higher than Inflation

Increase in household expenditure partly reflects lifestyle changes and spending on better quality products and services



Report on the Household Expenditure Survey 2012/13



This report presents the key findings from the Household Expenditure Survey (HES) 2012/13.

Topics covered include household consumption expenditure, households' income, as well as households' socio-economic characteristics and ownership of selected consumer durables.

Changes compared to the results of the previous HES conducted in 2007/08 were highlighted in the analyses. Detailed statistical tables are also included for users who are interested to know more. The full report may be accessed via the [SingStat Website](#).