

information paper
on
business statistics

**RE-BASING OF THE WHOLESALE TRADE INDEX
(2012 = 100)**

Singapore Department of Statistics
May 2013

Papers in this Information Paper Series are intended to inform and clarify conceptual and methodological changes and improvements in official statistics. The views expressed are based on the latest methodological developments in the international statistical community. Statistical estimates presented in the papers are based on new or revised official statistics compiled from the best available data. Comments and suggestions are welcome.

© Singapore Department of Statistics. All rights reserved.

Please direct enquiries on this information paper to:

Wholesale Trade Index Section
Singapore Department of Statistics
Tel : 6332 8058

Email : info@singstat.gov.sg

Application for the copyright owner's written permission to reproduce any part of this publication should be addressed to the Chief Statistician and emailed to the above address.

RE-BASING OF THE WHOLESALE TRADE INDEX

(2012 = 100)

I Introduction

1. Since 1995, the Department of Statistics has been compiling the Wholesale Trade Index (WTI) to measure the quarterly business performance of the wholesale trade sector. The index series consists of the Domestic WTI and Foreign WTI for measuring the wholesale sales in and outside of Singapore. The wholesale trade sector is an important sector in the distribution of merchandise. Wholesalers supply merchandise to manufacturers, commercial and institutional clients for use in production, or to other wholesalers and retailers for resale. Some wholesalers also perform related functions such as sorting, breaking bulk, packing and logistics.

2. The WTI is re-based at regular intervals to reflect changes in the structure of the wholesale trade sector. The coverage and weights are revised and methodology is also reviewed during the re-basing exercise. The WTI series compiled currently by the Department is based on year 2007 and the latest re-basing to year 2012 is the third re-basing of the series.

3. This information paper presents the re-basing of the WTI from reference year 2007 to reference year 2012. Details on the data sources, methodology adopted, formula for index compilation and the comparison of the re-based series and old series are provided in the paper. In addition, detailed weights for activities in the wholesale trade sector as well as the re-based series from 1Q2012 to 4Q2012 are appended in the Annexes.

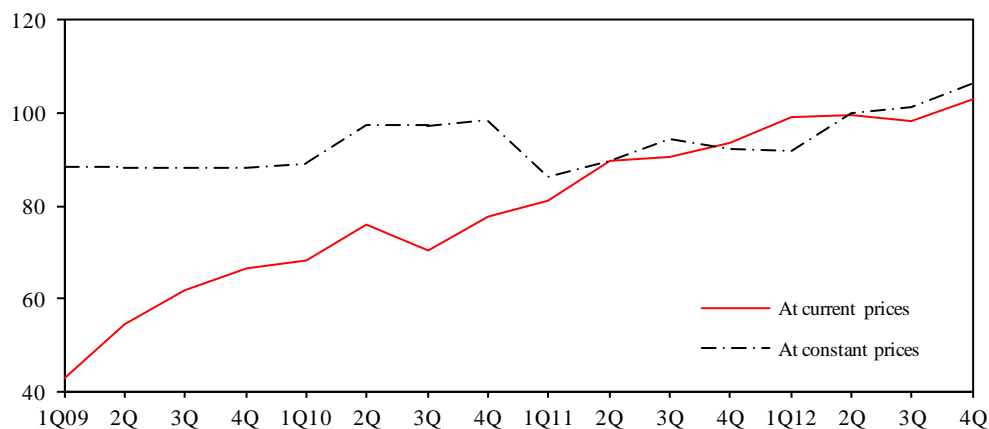
II What Does WTI Measure?

4. The Domestic WTI measures the quarterly wholesale sales within Singapore and the Foreign WTI measures the quarterly wholesale sales outside Singapore (namely domestic exports, re-exports, transshipment cargo and off-shore merchandise¹).

5. The WTI indices are presented in both current prices and constant prices. The indices at current prices measure the changes of sales value which result from changes in both price and quantity. The indices at constant prices measure the changes in sales volume by removing the price effect.

6. For instance, Chart 1 shows the Foreign WTI of petroleum and petroleum products at current prices and constant prices. The index at current prices measures the changes of petroleum sales value from 1Q2009 to 4Q2012 and the changes were largely due to price changes. After removing price changes, the index at constant prices shows that the sales volume was generally stable during the period.

Chart 1: Foreign WTI of Petroleum & Petroleum Products (2012=100)



¹ Transshipment cargo refers to goods that are moved across Singapore in the course of transportation to another country. Off-shore merchandise refers to goods that are billed, transacted or brokered in Singapore, but shipped directly from the source to destination without entering Singapore at all.

7. Seasonal effects are observed in some of the Domestic WTI and Foreign WTI series, due to intra-year periodic variations that repeat in the same quarter every year. For example, overall domestic wholesale sales are usually lower in the first quarter compared to other quarters of the same year. To better reflect the underlying trend, both Domestic WTI and Foreign WTI are seasonally adjusted to remove the seasonal effects.

III Data Sources

8. The data used for the compilation of the WTI are primarily obtained from the Quarterly Wholesale Trade Survey (WTS). The WTS covers wholesale establishments in the two-digit division “46” of the Singapore Standard Industrial Classification 2010 (SSIC 2010). At the end of each reference quarter, questionnaires are sent to a sample of the wholesale establishments to collect their domestic wholesale sales and foreign wholesale sales for the quarter.

IV Index Computation

9. The sales indices at current prices are computed from the sales value using the following formula:

$$I_{0n} = \sum_i W_{io} \frac{V_{in}}{V_{i0}} \times 100$$

where

I_{0n} is the index of the overall wholesale trade sector for the current period n compared to the base period 0 (the base year is 2012);

V_{in} is the sales value of i^{th} industry during the current period n ;

V_{i0} is the sales value of i^{th} industry during the base period 0 ;

W_i is the normalised weight assigned to the i^{th} industry, i.e. its share in terms of wholesale sales with respect to the overall wholesale trade sector;

\sum_i is the summation of all industries in the wholesale trade sector.

10. In other words, the overall sales index at current prices is a weighted average of indices from detailed industry level. To derive the WTI index at detailed industry level, the quarterly wholesale sales for that industry is divided by the average quarterly wholesale sales for the same industry in 2012 (base year). The overall WTI is then computed by combining the sales indices of the detailed industries, using the weights to measure each industry's relative importance in the overall wholesale trade sector.

11. To derive the constant prices indices, the sales indices at current prices at detailed industry level are first deflated by appropriate price indices. These component indices at constant prices are then weighted and aggregated to derive the overall indices at constant prices.

V The Re-based WTI Series

Selection of the New Sample

12. WTS uses a stratified random sampling design to select over 700 establishments for the new sample. The sampling frame is obtained from the Department's Business Register which contains basic information of enterprises and establishments registered in Singapore. The data in the Business Register are primarily sourced from the registration records of the Accounting and Corporate Regulatory Authority (ACRA), which is the agency in charge of the registration of companies and businesses in Singapore.

13. The sampling frame was first stratified by industry group. Each industry group was further stratified by size of operating receipts into three size strata (large, medium and small). All establishments in the large size stratum were selected with certainty whereas establishments in the medium and small size strata were selected randomly. Lavallée-Hidiroglou (1988) algorithm was applied within each industry group to determine the size stratum boundaries and the optimal sample size for a required level of precision.

Weighting Pattern

14. The weight for each industry reflects its relative importance in the overall wholesale trade sector. The weights for Domestic WTI and Foreign WTI are computed based on the domestic wholesale sales and foreign wholesale sales of the respective industries obtained from the Annual Survey of Wholesale Trade for reference year 2011.

15. Table 1 compares the old and new weights for Domestic WTI and Foreign WTI for WTI categories. The largest category is “Petroleum & Petroleum Products” in both domestic and foreign WTI, with Singapore being a global oil trading hub. The share of petrol sales in domestic wholesale sales rose from 44.0 per cent in the 2007-based series to 51.4 per cent in the 2012-based series. Although foreign wholesale sales for petrol also rose during the same period, its share in the total foreign wholesale sales declined slightly from 45.4 per cent in the old series to 44.8 per cent in the re-based series, partly due to a rise in share of other categories such as “Metals, Timber, & Construction Materials” and “General Wholesale Trade”.

Table 1: Weighting Pattern of DWTI and FWTI in 2007- & 2012-Based Series

	Domestic		Foreign	
	2007=100	2012=100	2007=100	2012=100
Total	10,000	10,000	10,000	10,000
1 Food, Beverages & Tobacco	407	380	374	405
2 Household Equipment & Furniture	298	218	287	110
3 Petroleum & Petroleum Products	4,396	5,136	4,544	4,476
4 Chemicals & Chemical Products	406	351	513	492
5 Electronic Components	839	442	1,084	529
6 Industrial & Construction Machinery	285	345	257	227
7 Telecommunications & Computers	567	549	799	790
8 Metals, Timber & Construction Materials*	357	336	186	711
9 General Wholesale Trade	572	396	574	708
10 Ship Chandlers & Bunkering	883	1039	229	234
11 Transport Equipment	190	170	288	230
12 Other Wholesale Trade	800	638	865	1,088

* Previously known as “Timber, Paints & Construction Materials”.

16. “Metals, Timber & Construction Materials” and “General Wholesale Trade” were also among the largest categories in terms of turnover within the wholesale trade sector. Their weights in foreign wholesale sales increased from 1.9 per cent and 5.7 per cent respectively in the 2007-based series to 7.1 per cent in the 2012-based series.

17. In terms of domestic wholesale sales, the relative importance of “Ship Chandlers & Bunkering” increased by 1.6 percentage points to 10.4 per cent in the 2012-based series. This was mainly because of a growth in the ship bunkering sector.

18. Conversely, the weights of “Electronic Components” in domestic and foreign wholesale sales declined by 4.0 percentage points and 5.5 percentage points respectively in the re-based series. The weights of “Household Equipment & Furniture” also declined in both domestic and foreign wholesale sales in the 2012-based series.

VI Linking of Historical Series

19. To facilitate the time series analysis of the WTI series, the 2007-based old series was linked to the 2012-based new series using this approach:

Linked 2012-based index = 2007-based index × Linking Coefficient

where the Linking Coefficient is the ratio of the average value of the 2012-based index in 2012 to the average value of the 2007-based index in 2012.

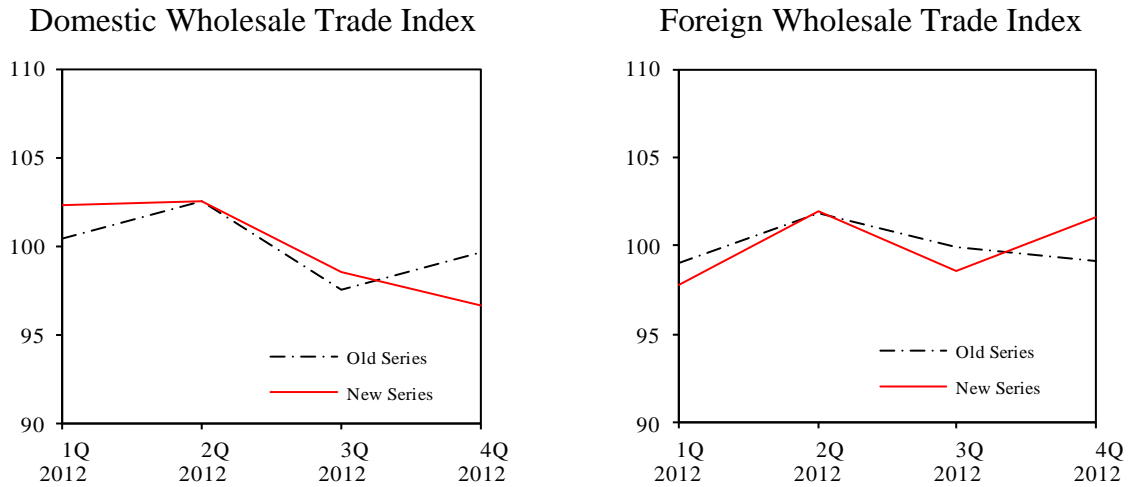
Example:

<i>Average value of the 2007-based index in 2012</i>	<i>= 130.5</i>
<i>Average value of the 2012-based index in 2012</i>	<i>= 100</i>
<i>Linking Coefficient</i>	<i>= 100/130.5</i>
<i>2007-based index in 1Q2011</i>	<i>= 118.3</i>
<i>2012-based index in 1Q2011</i>	<i>= 118.3×(100/130.5)=90.7</i>

VII Comparison of Old and New Series

20. Chart 2 shows a comparison of the overall Domestic WTI and overall Foreign WTI of the 2007-based and 2012-based series at current prices from 1Q2012 to 4Q2012. The old and new series present similar trends in both domestic wholesale sales and foreign wholesale sales except for 4Q2012. The new series shows lower domestic wholesale sales and higher foreign wholesale sales in 4Q2012 compared to the old series.

Chart 2: Wholesale Trade Index at Current Prices (2012=100)



Dissemination

21. The 2012-based series will be released with effect from 1Q2013 report. The quarterly report is available at the SingStat website (<http://www.singstat.gov.sg>). The Domestic WTI and Foreign WTI are also published in the Monthly Digest of Statistics and Yearbook of Statistics. Subscribers to the Department’s Singstat Time Series (STS) may download the historical data electronically.

Singapore Department of Statistics

May 2013

References

1. *Lavallée, P. & Hidiroglou, M. (1988). On the stratification of skewed populations. Survey Methodology 14, 33–43.*
2. *Publication of Quarterly Wholesale Trade Index*, available at SingStat website (http://www.singstat.gov.sg/publications/publications_and_papers/services/whole_sale_trade_index.html).
3. *Re-basing and revision of the Wholesale Trade Index (2007=100)*, available at SingStat website (http://www.singstat.gov.sg/publications/publications_and_papers/services/ip-b20.pdf).
4. *Seasonal adjustment of economic time series*, available at SingStat website (http://www.singstat.gov.sg/publications/publications_and_papers/reference/ip-e32.pdf).
5. *Singapore Standard Industrial Classification 2010*, available at SingStat website (http://www.singstat.gov.sg/methodologies_and_standards/standards_and_classifications/industrial_classification/ssic2010.pdf).
6. *Statistics Singapore Newsletter (March 2008): Improving Sampling Efficiency for the Annual Survey of Services*, available at SingStat website (<http://www.singstat.gov.sg/Publications/newsletter/archive/ssnmar2008.pdf>).

WEIGHTS OF WHOLESALE TRADE CATEGORIES

SSIC 2010	Description of Activity	Total	Domestic	Foreign
46	Total Wholesale Trade	10,000	10,000	10,000
	Total - Exclude Petroleum & Petroleum Products	5,407	4,864	5,524
	Food, Beverages & Tobacco	400	380	405
46301	Fruits and vegetables	10	48	1
46302	Livestock, meat, poultry, eggs and seafood	30	89	17
46303	Cereals, sugar, oils, sauces and dairy products	279	56	327
46304	Confectionery and bakery products	13	16	13
46305	Ice-cream	*	2	*
46306	Health supplements	5	12	4
46307	Liquor and soft drinks	33	65	27
46308	Tobacco products	13	39	8
46309	Food, beverages and tobacco nec	16	53	8
	Household Equipment & Furniture	129	218	110
46431	Furniture (including mattresses, cushions)	13	21	12
46432	Furnishings (including curtains, carpets, wallpaper)	3	11	1
46433	Lighting and lighting accessories	4	17	1
46434	Crockery, cutlery and kitchen utensils	2	8	1
46435	Household electrical appliances and equipment (including household air-conditioners)	29	26	30
46436	Audio and video equipment except electrical and electronic components (e.g. radio and television sets, sound reproducing and recording equipment)	74	125	63
46437	Musical instruments and scores	*	1	*
46439	Furniture, home furnishings and other household equipment nec	3	9	2
	Petroleum & Petroleum Products	4,593	5,136	4,476
46611	Crude petroleum	2,896	2,307	3,022
46612	Mineral fuels and lubricants	1,593	2,791	1,336
46619	Solid, liquid and gaseous fuels and related products nec (e.g. bitumen)	103	39	117
	Chemicals & Chemical Products	467	351	492
46641	Basic industrial chemicals (except fertilizers)	79	79	79
46642	Chemical fertilizers	32	3	39
46643	Petrochemical products	289	213	305
46649	Chemicals and chemical products nec	67	56	69
	Electronic Components	513	442	529
46521	Telecommunications equipment	69	39	75
46522	Electronic components	445	403	453

WEIGHTS OF WHOLESALE TRADE CATEGORIES

SSIC 2010	Description of Activity	Total	Domestic	Foreign
	Industrial & Construction Machinery	248	345	227
46530	Agricultural machinery, equipment and supplies	2	1	3
46541	Industrial machinery and equipment	99	166	84
46542	Construction equipment (e.g. concrete mixer)	88	75	91
46543	Lifts, escalators and industrial and office air-conditioning equipment	5	17	2
46544	Electrical and wiring accessories	41	57	37
46549	Industrial, agricultural, construction and related machinery and equipment nec	13	30	10
	Telecommunications & Computers	747	549	790
46511	Computer hardware and peripheral equipment	611	352	667
46512	Computer software (except games)	49	29	53
46513	Computer accessories (e.g. memory cards, computer cables)	8	20	5
46523	Pagers, handphones and other telecommunications apparatus (e.g. palmtops, smart watches, wearable computer and electronic books)	36	108	20
46591	Office machines and equipment (including accessories)	44	40	45
	Metals, Timber & Construction Materials	645	336	711
46620	Metals and metal ores except general hardware (e.g. steel pipes)	573	144	665
46631	Logs, sawn timber, plywood and related products	23	36	20
46632	General hardware (e.g. locks, hinges)	14	57	5
46633	Structural clay and concrete products (e.g. mosaic tiles, bricks)	4	20	1
46634	Paints (including varnishes and supplies)	3	8	1
46635	Glass	2	2	2
46639	Construction materials, hardware, plumbing and heating equipment and supplies nec (e.g. cement, sand)	26	69	16
	General Wholesale Trade	653	396	708
46900	General wholesale trade (including general importers and exporters)	653	396	708
	Ship Chandlers & Bunkering	376	1,039	234
46661	Ship chandlers	7	16	5
46662	Ship bunkering	369	1023	228
	Transport Equipment	220	170	230
46551	Marine equipment and accessories (including marine navigational equipment and radar)	18	44	13
46552	Aircraft equipment and supplies (including aeronautical equipment)	8	12	7
46559	Transport equipment except motor vehicles and motorcycles nec	2	*	3
46561	Motor vehicles except motorcycles and scooters	17	54	9
46562	Motorcycles and scooters	6	1	7
46563	Parts and accessories for vehicles	168	57	192

WEIGHTS OF WHOLESALE TRADE CATEGORIES

SSIC 2010	Description of Activity	Total	Domestic	Foreign
	Other Wholesale Trade	1,009	638	1,088
	<i>Wholesale On a Fee or Contract Basis</i>			
46100	Wholesale on a fee or contract basis (e.g. commission agents)	*	*	*
	<i>Agricultural Raw Materials and Live Animals except Tropical Produce</i>			
46211	Cut flowers and plants	1	3	*
46212	Aquarium fishes (including food and accessories)	1	2	1
46213	Pet birds and animals (including food and accessories)	3	1	4
46219	Agricultural raw materials and live animals except tropical produce nec	274	31	327
	<i>Tropical Produce</i>			
46221	Rubber (including rubber brokers)	167	33	196
46222	Pepper and other spices	5	7	5
46223	Coffee, cocoa and tea	18	11	20
46224	Coconut	*	1	*
46225	Palm oil	83	21	97
46229	Tropical produce nec	7	2	8
	<i>Textile, Clothing, Footwear and Leather Goods</i>			
46411	Textiles	8	9	8
46412	Wearing apparel for adults	12	12	12
46413	Children and infants' wear (including products and accessories for infants)	1	4	1
46414	Footwear	4	7	3
46415	Bags, luggage and travel accessories	1	5	*
46416	Sewing and clothing accessories (e.g. button, thread, lace, zip)	*	1	*
	<i>Personal Effects</i>			
46421	Jewellery	22	53	15
46422	Costume jewellery	*	1	*
46423	Watches and clocks	14	46	7
46424	Cosmetics and toiletries	42	64	37
46429	Personal effects nec	1	2	*
	<i>Sporting and Other Recreational Goods</i>			
46441	Sporting goods and equipment (including bicycles and healthcare equipment)	7	10	6
46442	Music and video recordings (e.g. record albums, compact discs, VCDs, DVDs)	1	4	*
46443	Toys and games	1	6	*
46444	Computer games (including electronic games and video game consoles)	2	4	2
46449	Sporting and other recreational goods nec	1	2	*

WEIGHTS OF WHOLESALE TRADE CATEGORIES

SSIC 2010	Description of Activity	Total	Domestic	Foreign
	<i>Handicraft & Fancy Goods</i>	*	1	*
46451	Antiques and works of art	1	6	*
46452	Handicrafts and gifts	*	*	*
46453	Artificial flowers and plants	*	1	*
46459	Handicrafts and fancy goods nec			
	<i>Medicinal and Pharmaceutical Products</i>			
46461	Medicinal and pharmaceutical products (Western)	96	62	104
46462	Medicine and herbs (other than Western)	2	8	*
	<i>Paper, Paper and Cellophane Products and Stationery</i>			
46471	Paper and paper products	20	18	21
46472	Packaging materials	5	13	3
46473	Stationery	2	8	*
46474	Books and magazines	3	9	2
46479	Paper, paper and cellophane products and stationery nec	1	2	*
	<i>Other Household Goods</i>			
46491	Optical equipment and supplies (excluding binoculars)	7	8	7
46492	Photographic equipment and supplies (including binoculars)	5	12	4
46499	Other household goods nec	*	1	*
	<i>Other Machinery & Equipment</i>			
46592	Medical, professional, scientific and precision equipment	35	54	31
46593	Commercial food service equipment (e.g. hotel kitchen equipment)	1	3	1
46594	Service establishment equipment and supplies (e.g. beauty salon equipment)	*	1	*
46595	Security and fire-fighting equipment	6	15	4
46599	Other machinery and equipment nec	10	22	7
	<i>Other Intermediate Products, Waste and Scrap</i>			
46651	Scrap, junk and waste dealers	18	14	19
46659	Other intermediate products, waste and scrap nec	2	5	1
	<i>Specific Commodities nec</i>			
46691	Animal feed	95	2	114
46692	Leather and PVC materials	1	1	1
46693	Joss paper, joss sticks and other ceremonial products	*	2	*
46694	Rattan	*	*	*
46695	Industrial ice (dry ice)	*	*	*
46699	Other specific commodities nec	21	29	19

* Weight is insignificant, less than 1.

TABLE 1
DOMESTIC WHOLESALE TRADE INDEX
(2012 = 100)

	Total	Total (excluding petroleum)	Food, Beverages & Tobacco	Household Equipment & Furniture	Petroleum & Petroleum Products	Chemicals & Chemical Products	Electronic Components	Industrial & Construction Machinery	Telecom- munications & Computers	Metals, Timber & Construction Materials	General Wholesale Trade	Ship Chandlers & Bunkering	Transport Equipment	Other Wholesale Trade
Weights Period	10,000	4,864	380	218	5,136	351	442	345	549	336	396	1,039	170	638
At Current Prices														
2009	84.0	86.4	78.4	88.9	81.2	87.8	105.4	87.4	84.9	94.3	61.7	80.6	92.4	101.9
2010	91.5	97.5	84.8	96.0	84.3	99.6	120.9	94.2	95.1	96.7	91.6	85.4	94.9	111.4
2011	102.0	101.2	93.0	90.9	102.8	103.9	104.6	103.0	97.7	99.6	102.9	99.8	99.1	110.0
2012	100.0	100.0	100.0	100.0	100.0	100.0	100.0	100.0	100.0	100.0	100.0	100.0	100.0	100.0
2011 I	97.2	99.1	90.2	90.7	95.0	106.9	110.1	95.7	93.7	90.3	104.3	92.1	95.4	108.9
II	104.0	102.5	89.8	91.9	105.9	115.0	104.2	106.0	92.0	110.2	105.5	99.4	103.8	110.2
III	103.0	100.1	93.6	88.2	106.5	99.8	105.1	100.3	95.0	96.8	104.5	100.1	98.7	106.8
IV	103.5	103.4	98.4	93.0	103.7	94.1	98.8	109.9	110.0	101.0	97.1	107.7	98.6	113.9
2012 I	102.3	98.5	102.4	88.3	105.9	97.1	97.3	101.4	103.0	94.2	79.4	106.8	99.6	96.4
II	102.6	103.7	97.8	100.9	101.5	102.4	100.0	99.3	97.0	101.0	126.9	105.9	108.9	101.7
III	98.5	99.5	98.4	103.1	97.6	102.0	100.6	97.0	94.7	105.5	107.4	96.9	98.8	98.4
IV	96.6	98.3	101.5	107.7	95.0	98.5	102.1	102.4	105.3	99.4	86.4	90.4	92.7	103.6
At Constant Prices														
2009	103.9	90.5	80.3	78.2	125.3	118.1	93.2	76.8	67.8	93.5	70.0	126.6	87.2	106.2
2010	104.0	100.0	85.6	87.8	110.4	118.9	114.0	87.2	81.9	95.3	99.7	111.7	94.2	112.9
2011	102.2	100.3	92.0	88.5	105.2	105.2	104.6	101.1	94.0	96.4	103.3	102.0	99.8	109.3
2012	100.0	100.0	100.0	100.0	100.0	100.0	100.0	100.0	100.0	100.0	100.0	100.0	100.0	100.0
2011 I	99.2	97.9	89.8	82.7	101.4	111.6	108.4	91.5	85.7	87.2	105.9	98.6	95.6	108.4
II	103.2	101.2	89.1	90.4	106.4	114.5	104.3	105.3	89.5	106.3	105.5	99.6	104.7	109.8
III	104.4	100.6	93.0	88.6	110.4	101.3	107.4	102.1	94.2	93.8	106.3	102.9	100.5	106.6
IV	102.1	101.6	96.2	92.1	102.8	93.2	98.4	105.5	106.4	98.2	95.7	107.0	98.3	112.2
2012 I	96.4	95.0	101.0	87.7	97.8	91.3	94.3	100.5	101.3	92.4	75.9	98.6	99.3	94.5
II	102.8	103.4	97.7	100.6	102.3	102.2	98.5	98.7	96.7	100.2	126.2	106.8	108.6	100.6
III	100.4	100.3	98.9	102.9	100.4	104.0	101.0	97.1	94.5	106.3	108.8	98.8	98.8	99.0
IV	100.4	101.3	102.4	108.8	99.5	102.5	106.2	103.8	107.5	101.0	89.2	95.8	93.3	105.8

TABLE 2
PERCENT CHANGE IN DOMESTIC WHOLESALE TRADE INDEX OVER PREVIOUS QUARTER
(2012 = 100)

	Total	Total (excluding petroleum)	Food, Beverages & Tobacco	Household Equipment & Furniture	Petroleum & Petroleum Products	Chemicals & Chemical Products	Electronic Components	Industrial & Construction Machinery	Telecom- munications & Computers	Metals, Timber & Construction Materials	General Wholesale Trade	Ship Chandlers & Bunkering	Transport Equipment	Other Wholesale Trade
Weights Period	10,000	4,864	380	218	5,136	351	442	345	549	336	396	1,039	170	638
At Current Prices														
2011 I	1.7	0.5	-4.3	-14.2	3.2	10.2	-6.4	-1.1	-0.8	-6.5	13.7	11.6	11.3	-7.2
II	7.0	3.4	-0.5	1.3	11.5	7.5	-5.4	10.8	-1.7	22.0	1.2	7.9	8.8	1.2
III	-1.0	-2.3	4.3	-4.1	0.6	-13.2	0.8	-5.4	3.2	-12.2	-0.9	0.7	-5.0	-3.1
IV	0.5	3.2	5.1	5.5	-2.6	-5.7	-6.0	9.6	15.9	4.3	-7.1	7.6	-0.1	6.7
2012 I	-1.2	-4.7	4.0	-5.1	2.1	3.1	-1.6	-7.8	-6.4	-6.8	-18.3	-0.8	1.0	-15.4
II	0.2	5.3	-4.5	14.2	-4.2	5.5	2.9	-2.0	-5.7	7.2	59.8	-0.8	9.3	5.5
III	-4.0	-4.1	0.6	2.2	-3.8	-0.4	0.6	-2.4	-2.4	4.5	-15.4	-8.6	-9.3	-3.2
IV	-1.9	-1.1	3.1	4.5	-2.6	-3.4	1.5	5.6	11.1	-5.8	-19.6	-6.7	-6.1	5.3
At Constant Prices														
2011 I	-7.9	-3.6	-5.7	-15.3	-13.7	-2.5	-5.8	1.3	1.2	-8.4	6.2	-6.7	9.9	-8.0
II	4.0	3.4	-0.7	9.3	5.0	2.6	-3.7	15.1	4.5	21.8	-0.5	1.0	9.5	1.3
III	1.1	-0.6	4.3	-2.1	3.8	-11.5	3.0	-3.1	5.1	-11.7	0.8	3.2	-4.0	-2.9
IV	-2.2	1.0	3.4	4.0	-6.9	-8.0	-8.4	3.4	13.0	4.6	-9.9	4.0	-2.2	5.2
2012 I	-5.5	-6.5	5.0	-4.7	-4.9	-2.1	-4.2	-4.8	-4.8	-5.9	-20.7	-7.9	1.0	-15.7
II	6.6	8.8	-3.2	14.6	4.6	12.0	4.5	-1.8	-4.6	8.5	66.3	8.3	9.4	6.5
III	-2.4	-2.9	1.2	2.4	-1.8	1.7	2.5	-1.6	-2.2	6.1	-13.7	-7.4	-9.1	-1.6
IV	0.0	0.9	3.6	5.7	-0.9	-1.5	5.2	6.9	13.6	-5.0	-18.1	-3.0	-5.5	6.8

TABLE 3
PERCENT CHANGE IN DOMESTIC WHOLESALE TRADE INDEX OVER CORRESPONDING PERIOD OF PREVIOUS YEAR
(2012 = 100)

	Total	Total (excluding petroleum)	Food, Beverages & Tobacco	Household Equipment & Furniture	Petroleum & Petroleum Products	Chemicals & Chemical Products	Electronic Components	Industrial & Construction Machinery	Telecom- munications & Computers	Metals, Timber & Construction Materials	General Wholesale Trade	Ship Chandlers & Bunkering	Transport Equipment	Other Wholesale Trade
Weights Period	10,000	4,864	380	218	5,136	351	442	345	549	336	396	1,039	170	638
At Current Prices														
2009	-19.8	-12.6	0.2	1.9	-27.5	-17.9	-18.8	-7.5	0.0	-11.7	-9.5	-32.3	-11.1	-2.1
2010	8.9	12.9	8.1	8.0	3.8	13.4	14.7	7.9	12.0	2.6	48.5	5.9	2.7	9.4
2011	11.4	3.8	9.7	-5.3	22.0	4.4	-13.5	9.3	2.7	3.0	12.3	16.9	4.5	-1.3
2012	-1.9	-1.2	7.5	10.0	-2.7	-3.8	-4.4	-2.9	2.4	0.4	-2.8	0.2	0.9	-9.1
2011 I	7.2	1.4	9.6	-0.2	15.6	-3.2	-7.4	6.4	-1.2	-0.1	8.7	4.1	-3.3	0.2
II	12.4	3.7	13.3	-1.1	24.5	17.1	-16.1	11.0	-2.8	5.6	11.9	13.4	-1.2	-2.1
III	18.2	5.4	12.2	-6.7	37.0	7.8	-14.5	6.0	-1.7	1.6	23.8	20.9	9.5	-0.4
IV	8.3	4.9	4.4	-12.0	12.7	-3.0	-16.1	13.6	16.6	4.5	5.9	30.4	15.0	-2.9
2012 I	5.2	-0.5	13.5	-2.6	11.5	-9.2	-11.7	5.9	9.9	4.2	-23.9	15.9	4.4	-11.5
II	-1.4	1.2	8.9	9.8	-4.2	-10.9	-4.0	-6.3	5.4	-8.4	20.2	6.6	4.8	-7.7
III	-4.4	-0.6	5.1	16.9	-8.4	2.2	-4.3	-3.3	-0.2	9.0	2.7	-3.2	0.1	-7.9
IV	-6.7	-4.9	3.1	15.8	-8.4	4.7	3.4	-6.9	-4.3	-1.6	-11.1	-16.1	-5.9	-9.1
At Constant Prices														
2009	1.2	-3.2	-0.3	-0.3	6.9	7.6	-19.1	-5.2	0.5	-2.5	5.0	-1.7	-13.3	-1.7
2010	0.0	10.4	6.7	12.4	-11.9	0.6	22.3	13.6	20.7	1.9	42.3	-11.8	8.0	6.3
2011	-1.7	0.4	7.5	0.7	-4.7	-11.5	-8.2	15.9	14.8	1.1	3.7	-8.6	5.9	-3.2
2012	-2.2	-0.3	8.7	13.0	-5.0	-4.9	-4.4	-1.1	6.4	3.8	-3.2	-2.0	0.2	-8.5
2011 I	-2.6	-1.3	7.9	0.0	-4.6	-14.2	-0.9	9.8	7.7	-2.9	2.3	-13.1	-0.3	-2.6
II	-0.8	0.9	11.5	6.7	-3.2	-1.3	-9.4	18.9	12.6	3.9	3.8	-12.0	0.7	-3.2
III	2.0	1.7	10.4	2.7	2.4	-11.9	-7.8	17.9	12.5	-0.1	13.2	-10.0	11.5	-2.0
IV	-5.2	0.1	1.1	-5.6	-12.5	-18.6	-14.4	16.8	25.7	3.1	-4.0	1.2	13.0	-4.8
2012 I	-2.8	-2.9	12.5	6.1	-3.5	-18.2	-13.0	9.8	18.2	5.9	-28.4	0.0	3.9	-12.8
II	-0.4	2.2	9.6	11.2	-3.8	-10.7	-5.6	-6.3	7.9	-5.7	19.6	7.1	3.8	-8.4
III	-3.8	-0.2	6.3	16.2	-9.0	2.7	-6.0	-4.9	0.4	13.4	2.4	-3.9	-1.7	-7.1
IV	-1.7	-0.3	6.5	18.1	-3.2	9.9	7.9	-1.6	1.0	3.0	-6.8	-10.4	-5.1	-5.7

TABLE 4
FOREIGN WHOLESALE TRADE INDEX
(2012 = 100)

	Total	Total (excluding petroleum)	Food, Beverages & Tobacco	Household Equipment & Furniture	Petroleum & Petroleum Products	Chemicals & Chemical Products	Electronic Components	Industrial & Construction Machinery	Telecom- munications & Computers	Metals, Timber & Construction Materials	General Wholesale Trade	Ship Chandlers & Bunkering	Transport Equipment	Other Wholesale Trade
Weights Period	10,000	5,524	405	110	4,476	492	529	227	790	711	708	234	230	1,088
At Current Prices														
2009	64.7	72.9	89.7	86.1	56.3	64.4	86.8	67.2	65.6	56.3	65.5	66.4	70.1	73.2
2010	80.1	87.0	93.5	106.4	73.0	82.4	94.4	86.8	77.5	81.0	81.1	82.3	85.6	91.3
2011	93.2	97.5	101.4	108.3	88.8	98.3	94.8	97.4	86.4	97.0	100.8	97.7	79.8	108.4
2012	100.0	100.0	100.0	100.0	100.0	100.0	100.0	100.0	100.0	100.0	100.0	100.0	100.0	100.0
2011 I	87.1	93.1	95.1	101.2	81.1	95.2	93.8	90.3	78.3	90.3	92.0	91.1	84.8	106.7
II	93.9	97.8	107.0	110.2	89.8	94.2	94.3	91.2	82.7	97.0	104.1	99.3	68.5	115.3
III	95.0	99.2	100.0	120.9	90.7	101.8	95.3	100.7	89.1	99.1	103.8	100.4	89.7	104.6
IV	96.7	99.8	103.5	100.8	93.5	102.1	95.7	107.3	95.5	101.7	103.2	100.0	76.4	106.8
2012 I	97.8	96.5	99.7	97.5	99.3	97.8	94.0	99.1	91.1	96.2	99.0	107.0	91.6	96.4
II	102.0	103.9	107.0	103.2	99.5	100.5	98.6	107.7	105.2	104.4	103.8	108.7	103.1	104.2
III	98.6	98.9	97.3	101.9	98.2	102.9	102.4	101.2	92.2	98.9	101.7	95.4	103.4	98.2
IV	101.7	100.7	96.0	97.5	102.9	98.8	105.0	92.1	111.4	100.5	95.5	88.8	101.9	101.2
At Constant Prices														
2009	77.9	70.9	95.9	70.4	88.3	85.0	77.1	56.3	48.7	57.9	67.2	103.8	64.8	84.9
2010	87.9	82.7	98.1	95.3	95.6	97.3	87.2	83.9	62.7	78.2	82.2	107.3	82.1	86.1
2011	91.7	92.4	101.4	103.3	90.6	99.2	91.4	98.3	83.8	89.6	99.7	99.4	80.1	92.2
2012	100.0	100.0	100.0	100.0	100.0	100.0	100.0	100.0	100.0	100.0	100.0	100.0	100.0	100.0
2011 I	86.1	86.1	95.3	93.5	86.2	99.5	88.9	91.5	71.6	80.2	91.1	97.6	84.0	86.2
II	90.9	91.6	107.6	105.7	89.7	93.0	90.7	93.2	80.7	87.2	102.3	98.1	68.5	96.1
III	95.3	96.1	100.4	117.9	94.3	103.5	94.2	102.5	88.8	93.0	104.5	102.9	91.5	89.5
IV	94.4	95.9	102.2	96.0	92.2	100.8	91.8	106.1	93.8	98.2	100.9	99.0	76.4	97.0
2012 I	92.5	92.9	97.7	95.0	92.0	92.9	92.0	98.8	86.8	90.3	95.9	99.9	90.7	93.0
II	101.3	102.3	105.2	102.3	100.0	99.8	95.9	107.3	102.1	104.1	102.5	108.9	102.7	101.8
III	100.9	100.4	98.7	102.8	101.4	104.5	103.2	101.2	92.9	102.1	102.8	97.2	103.5	100.3
IV	105.4	104.4	98.4	99.8	106.6	102.9	108.8	92.7	118.2	103.4	98.8	94.0	103.1	104.9

TABLE 5
PERCENT CHANGE IN FOREIGN WHOLESALE TRADE INDEX OVER PREVIOUS QUARTER
(2012 = 100)

	Total	Total (excluding petroleum)	Food, Beverages & Tobacco	Household Equipment & Furniture	Petroleum & Petroleum Products	Chemicals & Chemical Products	Electronic Components	Industrial & Construction Machinery	Telecom- munications & Computers	Metals, Timber & Construction Materials	General Wholesale Trade	Ship Chandlers & Bunkering	Transport Equipment	Other Wholesale Trade
Weights Period	10,000	5,524	405	110	4,476	492	529	227	790	711	708	234	230	1,088
At Current Prices														
2011 I	2.8	1.5	-8.3	-8.5	4.4	2.2	2.4	-2.0	-4.3	6.4	7.0	10.0	-6.4	9.5
II	7.7	5.1	12.5	9.0	10.8	-1.1	0.5	1.0	5.7	7.5	13.1	9.1	-19.3	8.0
III	1.2	1.4	-6.5	9.6	1.0	8.1	1.0	10.4	7.7	2.1	-0.2	1.0	30.9	-9.3
IV	1.8	0.6	3.4	-16.6	3.1	0.3	0.4	6.6	7.2	2.6	-0.6	-0.3	-14.8	2.1
2012 I	1.1	-3.3	-3.6	-3.3	6.2	-4.2	-1.8	-7.7	-4.6	-5.4	-4.0	7.0	20.0	-9.7
II	4.3	7.7	7.3	5.8	0.2	2.7	4.9	8.7	15.5	8.5	4.8	1.6	12.6	8.0
III	-3.3	-4.8	-9.1	-1.2	-1.3	2.5	3.8	-6.1	-12.4	-5.3	-2.0	-12.2	0.2	-5.8
IV	3.1	1.8	-1.3	-4.3	4.7	-4.0	2.6	-9.0	20.8	1.6	-6.0	-6.9	-1.4	3.0
At Constant Prices														
2011 I	-6.5	-2.0	-11.3	-8.0	-12.4	-8.4	2.0	-0.7	0.6	2.2	3.4	-6.6	-5.0	-0.8
II	5.5	6.5	12.9	13.0	4.1	-6.5	2.0	1.9	12.7	8.7	12.3	0.5	-18.4	11.5
III	4.9	4.8	-6.6	11.6	5.1	11.3	3.9	10.1	10.0	6.7	2.1	4.9	33.5	-6.9
IV	-1.0	-0.1	1.7	-18.6	-2.2	-2.6	-2.5	3.5	5.6	5.6	-3.4	-3.8	-16.5	8.4
2012 I	-2.1	-3.2	-4.3	-1.0	-0.2	-7.8	0.2	-6.9	-7.4	-8.1	-4.9	0.9	18.7	-4.2
II	9.6	10.2	7.7	7.7	8.8	7.5	4.3	8.6	17.6	15.3	6.9	9.0	13.3	9.5
III	-0.4	-1.9	-6.3	0.5	1.4	4.7	7.6	-5.7	-9.0	-1.9	0.2	-10.7	0.7	-1.5
IV	4.5	4.0	-0.3	-3.0	5.1	-1.5	5.4	-8.4	27.2	1.3	-3.8	-3.4	-0.4	4.6

TABLE 6
PERCENT CHANGE IN FOREIGN WHOLESALE TRADE INDEX OVER CORRESPONDING PERIOD OF PREVIOUS YEAR
(2012 = 100)

	Total	Total (excluding petroleum)	Food, Beverages & Tobacco	Household Equipment & Furniture	Petroleum & Petroleum Products	Chemicals & Chemical Products	Electronic Components	Industrial & Construction Machinery	Telecom- munications & Computers	Metals, Timber & Construction Materials	General Wholesale Trade	Ship Chandlers & Bunkering	Transport Equipment	Other Wholesale Trade
Weights Period	10,000	5,524	405	110	4,476	492	529	227	790	711	708	234	230	1,088
At Current Prices														
2009	-23.0	-16.2	-0.1	-20.7	-30.5	-23.0	-15.3	-25.0	-5.3	-21.7	-26.7	-26.3	-14.4	-16.8
2010	23.8	19.4	4.3	23.7	29.6	27.8	8.7	29.2	18.1	43.7	23.8	23.9	22.1	24.7
2011	16.4	12.1	8.4	1.7	21.6	19.4	0.5	12.2	11.5	19.9	24.2	18.8	-6.7	18.6
2012	7.3	2.6	-1.4	-7.6	12.6	1.7	5.5	2.7	15.7	3.1	-0.8	2.4	25.2	-7.7
2011 I	17.1	15.6	13.7	9.2	18.9	28.8	4.7	16.0	5.3	38.4	15.0	13.3	1.3	31.7
II	15.4	12.7	8.8	3.3	18.5	18.8	-2.3	6.7	9.0	12.7	29.2	23.0	-16.7	27.7
III	19.0	11.5	13.3	4.4	28.7	22.4	-4.4	9.8	14.1	13.1	33.2	17.9	4.8	8.3
IV	14.1	8.9	-0.3	-8.8	20.5	9.6	4.5	16.4	16.8	19.9	20.0	20.9	-15.7	9.7
2012 I	12.2	3.7	4.9	-3.6	22.6	2.7	0.2	9.7	16.4	6.6	7.6	17.6	8.0	-9.6
II	8.6	6.2	0.0	-6.4	10.8	6.7	4.5	18.1	27.2	7.6	-0.3	9.5	50.6	-9.6
III	3.8	-0.3	-2.8	-15.7	8.3	1.1	7.4	0.5	3.5	-0.2	-2.1	-4.9	15.3	-6.1
IV	5.1	0.8	-7.2	-3.3	10.0	-3.2	9.7	-14.2	16.7	-1.2	-7.4	-11.2	33.4	-5.3
At Constant Prices														
2009	-3.5	-9.7	-2.5	-17.7	5.1	1.1	-16.6	-23.4	-2.3	-10.3	-19.7	8.7	-21.1	-4.9
2010	12.8	16.6	2.3	35.3	8.3	14.4	13.2	49.1	28.7	35.1	22.2	3.4	26.7	1.4
2011	4.3	11.8	3.4	8.4	-5.2	2.0	4.8	17.1	33.6	14.6	21.3	-7.4	-2.4	7.1
2012	9.1	8.2	-1.3	-3.2	10.4	0.8	9.4	1.7	19.4	11.6	0.3	0.6	24.8	8.4
2011 I	6.0	13.4	7.0	16.5	-3.2	14.2	9.7	27.1	24.2	23.3	13.6	-7.4	7.6	9.5
II	3.2	12.3	3.6	11.3	-8.0	0.7	2.7	14.1	36.7	3.1	26.9	-5.6	-13.2	12.4
III	5.7	12.5	9.2	13.2	-3.2	2.4	1.9	13.9	41.7	9.6	31.1	-10.8	10.4	-3.9
IV	2.5	9.3	-4.9	-5.6	-6.4	-7.2	5.4	15.2	31.7	25.2	14.5	-5.3	-13.6	11.7
2012 I	7.4	7.9	2.6	1.7	6.7	-6.7	3.5	8.1	21.2	12.6	5.3	2.3	7.9	7.9
II	11.5	11.7	-2.2	-3.2	11.5	7.3	5.8	15.2	26.5	19.5	0.2	11.1	49.9	5.9
III	5.8	4.5	-1.8	-12.8	7.5	1.0	9.6	-1.3	4.6	9.8	-1.7	-5.5	13.2	12.1
IV	11.6	8.8	-3.7	3.9	15.6	2.1	18.5	-12.6	25.9	5.3	-2.1	-5.1	34.9	8.1

SINGAPORE DEPARTMENT OF STATISTICS INFORMATION DISSEMINATION SERVICES

Statistics Singapore Website

The *Statistics Singapore Website* was launched by the Singapore Department of Statistics (DOS) in January 1995. Internet users can access the website by connecting to:

<http://www.singstat.gov.sg>

Key Singapore statistics are available via the following sections:

- **Statistics**
which provides access to the latest statistical findings of DOS as well as statistics compiled by Research and Statistics Units (RSUs) in ministries and statutory boards.
- **News**
which provides a listing of the news released by DOS and RSUs.
- **Publications**
which presents the latest editions of DOS' publications, papers and articles.
- **Browse by Themes**
which presents official statistics compiled by DOS and RSUs in the various ministries and statutory boards according to themes. Within each theme, relevant statistics and related press releases, publications and references are provided.

Statistical resources are available via:

- **Publication and Papers**
which lists the latest editions of publications released by DOS according to statistical domains at http://www.singstat.gov.sg/publications/publications_and_papers.html. All softcopy DOS publications are available for free downloading. Statistical tables of DOS publications in Excel format are also available.
- **Advance Release Calendar**
which provides a six months ahead advance release calendar of key statistical indicators.

The website also provides a convenient gateway to international statistical websites under the "Methodologies & Standards" section:

- **Guide to International Statistics**
which provides hyperlinks to international databases and classifications, as well as websites of international bodies and other national statistical offices.
- **IMF Dissemination Standards Bulletin Board**
which provides metadata about Singapore's key indicators in the real, fiscal, financial and external sectors, including dissemination practices and information about pre-release access of current indicators.

SingStat Express

SingStat Express is a personalised data delivery service which sends the latest press releases, notices of publication, newsletter, occasional and information papers to subscribers via email. SMS alert service is also available to local users. Subscription details are available from the *Statistics Singapore Website* (<http://app.singstat.gov.sg/forms/express/newssubscriberform.aspx>).

SINGAPORE DEPARTMENT OF STATISTICS
INFORMATION DISSEMINATION SERVICES (*cont'd*)

Really Simple Syndication

Really Simple Syndication (RSS) is an easy way to stay updated on the latest statistical news released via the *Statistics Singapore Website*. The SingStat RSS feed delivers statistical news highlights and hyperlinks to the source documents whenever the updates are posted. More information is available at <http://www.singstat.gov.sg/services/RSS.html>.

SingStat Time Series (STS) Online System

The *SingStat Time Series (STS) Online System* is an internet-accessible time series retrieval system. The *STS* includes more than 7,000 historical data series on Singapore society and economy from several domains, including national accounts, balance of payments, investments, finance, labour, prices, business expectations, trade, manufacturing, tourism, demography, health and education.

Besides the usual monthly, quarterly and annual data, *STS* also includes seasonally adjusted data series for key economic indicators providing for a better analysis and understanding of current economic trends. The *STS* offers:

- Web-based search engine that is easy to use;
- “Bookmark” features that enable users to save and organise links in their personalised portals.

Subscription to *STS* is opened to local and overseas users. More information on *STS* is available via *Statistics Singapore Website* (https://app.sts.singstat.gov.sg/dots_index.asp). For enquiries, please contact our Department at **Tel: 6332-7119**.

E-survey

The *E-survey* enables business organisations to complete and submit their survey forms through the internet. Using secured encryption protocols, the *E-survey* ensures that the information transmitted through the net is secured and protected. The system features online helps and validation checks to assist respondents in completing their survey forms. With the *E-survey*, respondents can do away with the tedious paper work and manual tasks of mailing or faxing their survey returns to the Department.

Statistical Enquiries and Feedback

If you have any statistical enquiries or comment or suggestions on our statistical publications and electronic services, you are welcomed to:

- | | | |
|---|----|--|
|  E-mail us | at | info@singstat.gov.sg |
|  Fax to us | at | (65) 6332-7689 |
|  Call us | at | 1800-3238118* (local callers)
(65) 6332-7738 (overseas callers) |

* Calls from mobile telephone lines to 1800 local toll free number may be subject to mobile airtime charges as imposed by the relevant mobile service provider.