



Singapore in Figures

2018

ISSN 2591-7889
www.singstat.gov.sg

DEPARTMENT OF
STATISTICS
SINGAPORE



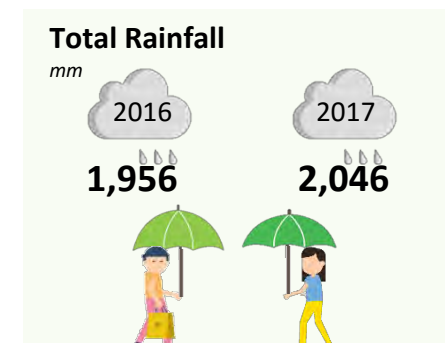
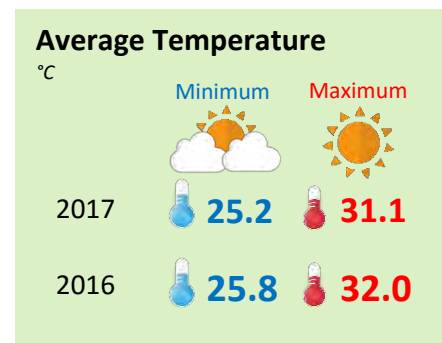
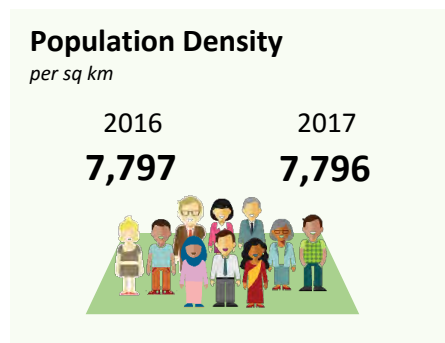
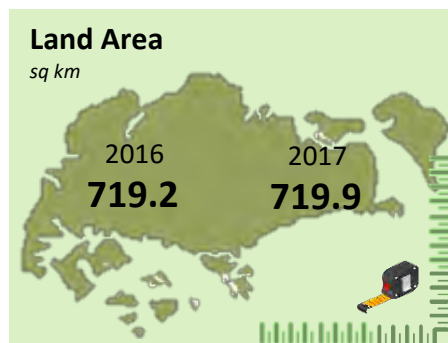
Contents

	1	Top-Line Indicators
	3	Comparison with Selected Countries/ Regions
	4	Population
	6	Labour Force
	8	Income from Work
	9	National Income
	10	Balance of Payments
	11	Investment in Singapore and Abroad
	13	Business Entities
	14	Manufacturing
	15	Research & Development
	15	Utilities
	16	Construction & Real Estate
	17	Services
	17	Merchandise Trade
	19	Transport and Communications
	20	Tourism
	21	Finance
	23	Government Finance
	24	Prices
	25	Consumer Durables
	26	Education
	27	Health
	28	Environment
	29	Culture and Recreation

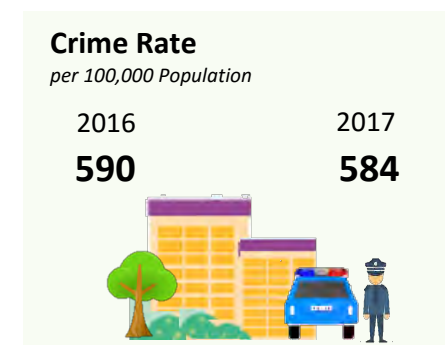
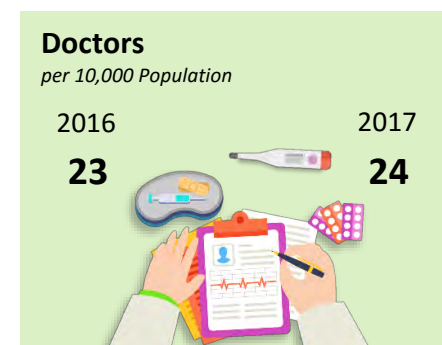
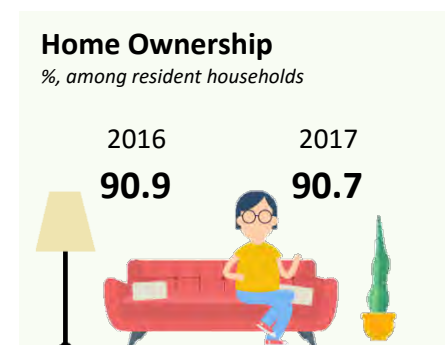
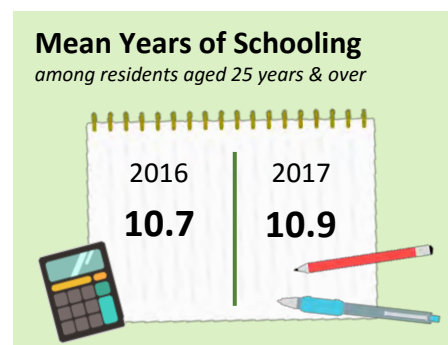
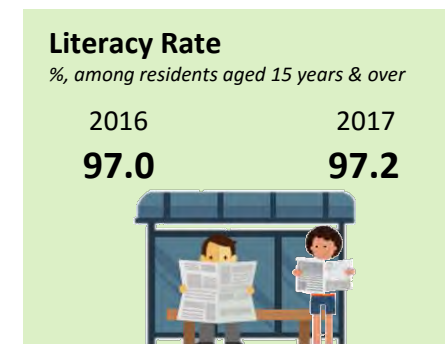
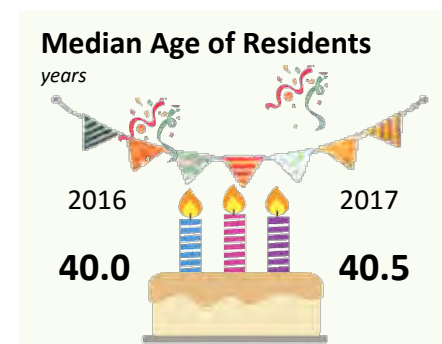
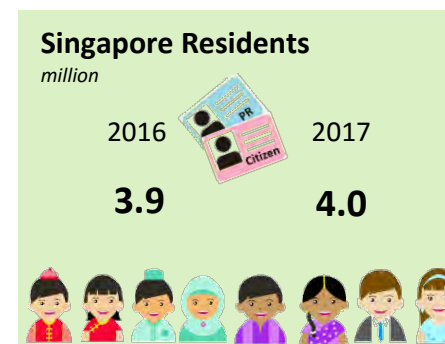
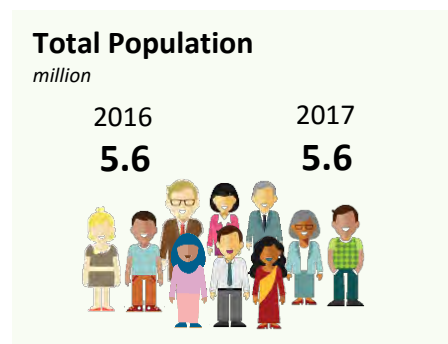


TOP-LINE INDICATORS

About Singapore



Social Indicators





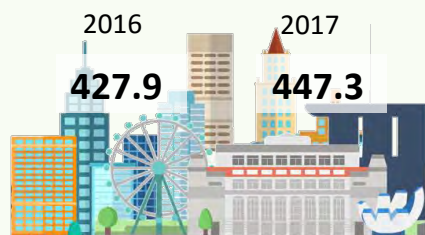
TOP-LINE INDICATORS



Economic Indicators

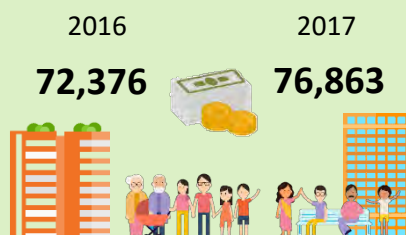
Gross Domestic Product

\$ billion at current market prices



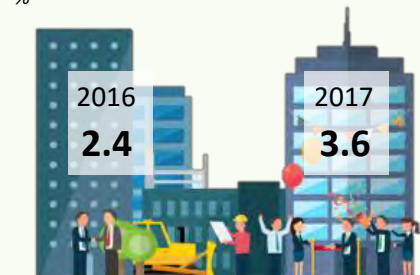
Per Capita Gross National Income

\$ at current market prices



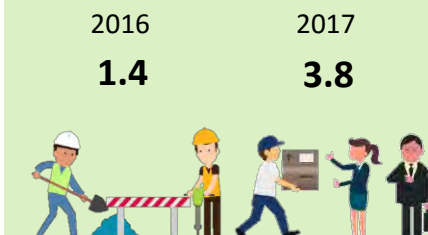
Real Economic Growth

%



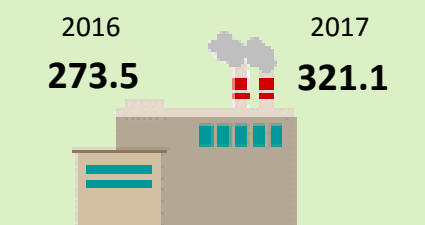
Productivity Growth

%



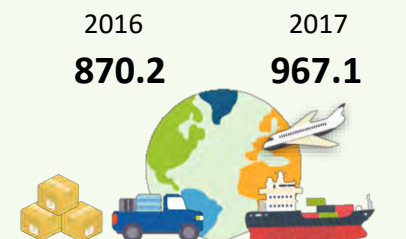
Total Output of Manufacturing Sector

\$ billion



Total Merchandise Trade

\$ billion



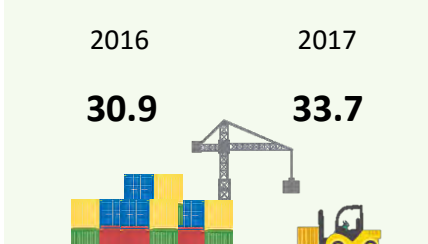
Cargo Handled

million tonnes



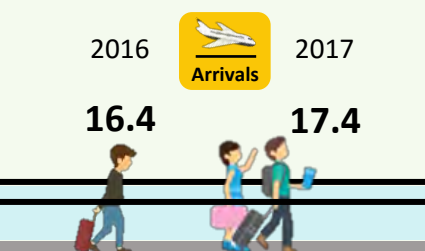
Container Throughput

million Twenty-foot Equivalent Units (TEUs)



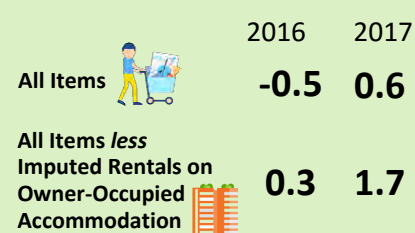
International Visitor Arrivals

million



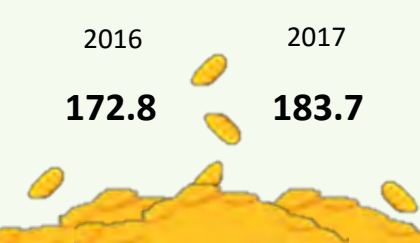
Consumer Price Index

annual percentage change



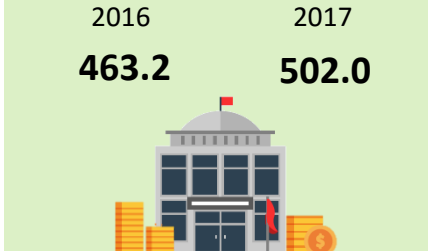
Money Supply (M1) *

\$ billion



Domestic Government Debt *

\$ billion














* Data are as at end of period.



COMPARISON WITH SELECTED COUNTRIES/REGIONS














Selected Economic Indicators, 2015

	Singapore 	Australia 	Canada 	China 	Hong Kong 	Japan 	Korea, Republic of 	Malaysia 	New Zealand 	United Kingdom 	United States 
Real Growth in GDP (%)	2.2	2.7	1.0	6.9	1.8	1.0	2.4	4.8	2.3	2.4	2.8
Per Capita GNI (US\$)	52,867	51,324	42,530	8,005	43,492	35,535	27,405	9,377	37,197	43,148	58,079
Unemployment Rate (%)	1.9	5.8	6.9	4.1	3.3	3.4	3.9	3.1	5.4	5.6	5.3
Labour Force Participation Rate (%)											
Males	77	71	71	na	69	70	74	81	75	69	69
Females	60	59	61	na	55	50	53	54	64	58	57
Inflation Rate (%)	-0.5	1.5	1.1	1.4	3.0	0.8	0.7	2.1	0.3	0.0	0.1

Source: Official statistical publications and websites
UNSD National Accounts Main Aggregates Database

Note: There may be differences in the data definitions or data collection methods among different countries/regions.
Users should refer to official data sources for more information, where necessary.

Selected Social Indicators, 2015

	Singapore 	Australia 	Canada 	China 	Hong Kong 	Japan 	Korea, Republic of 	Malaysia 	New Zealand 	United Kingdom 	United States 
Population (million)	5.5	23.9	35.8	1,374.6	7.3	127.1	51.1	31.2	4.6	65.1	321.0
Life Expectancy at Birth (years)											
Males	80.5	80.4	79.8	73.6	81.4	80.8	79.0	72.5	79.9	79.1	76.3
Females	85.1	84.5	83.9	79.4	87.3	87.0	85.2	77.1	83.4	82.8	81.1
Infant Mortality Rate (per 1,000 live-births)	1.7	3.2	4.5	8.1	1.4	1.9	2.7	6.9	4.1	3.9	5.9
Total Fertility Rate (per female)	1.24	1.79	1.56	1.50-1.60	1.20	1.45	1.24	2.00	1.99	1.80	1.84
Doctors Per 10,000 Population	23	35	25	18	19	24 ¹	23	15	31	28	26 ¹
Home Ownership (%)	90.8	67.5	69.0 ³	85.4 ⁴	50.3	61.5 ²	56.8	55.8 ⁴	63.8	63.6	63.4

Source: Official statistical publications and websites
WHO Global Health Observatory Data Repository

Note: There may be differences in the data definitions or data collection methods among different countries/regions.
Users should refer to official data sources for more information, where necessary.

¹ Refers to 2014 ² Refers to 2013 ³ Refers to 2011 ⁴ Refers to 2010

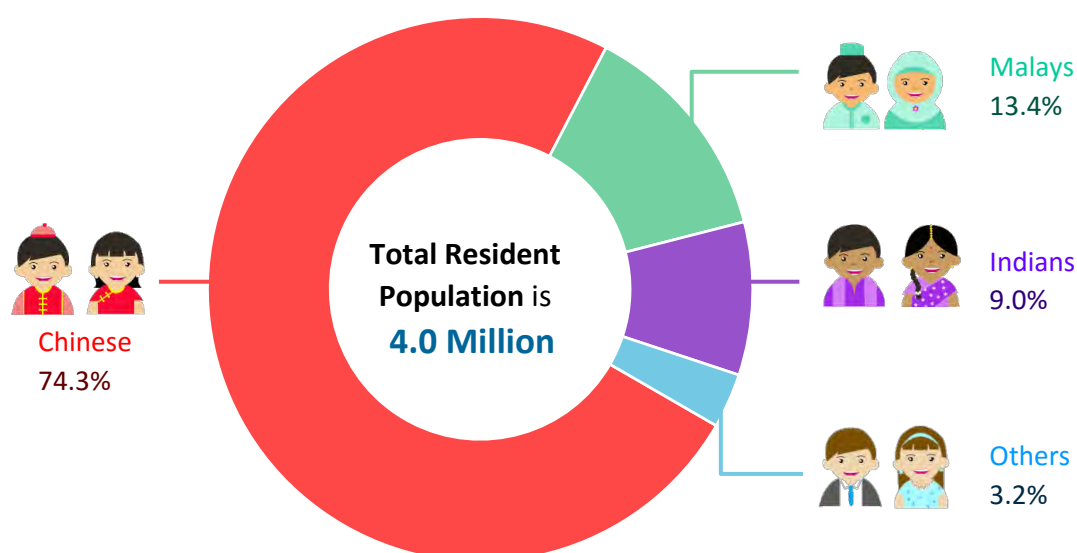


Population and Growth Rate

	Total Population	Resident Population	Total Population Growth	Resident Population Growth
	Thousand		Per Cent	
Census				
1990	3,047.1	2,735.9	2.3	1.7
2000	4,027.9	3,273.4	1.7	1.4
2010	5,076.7	3,771.7	1.8	1.0
Mid-Year Estimates				
2015	5,535.0	3,902.7	1.2	0.8
2016	5,607.3	3,933.6	1.3	0.8
2017	5,612.3	3,965.8	0.1	0.8

Notes : Total population comprises Singapore residents and non-residents.
Singapore resident population comprises Singapore citizens and permanent residents.

Ethnic Composition of the Resident Population, 2017

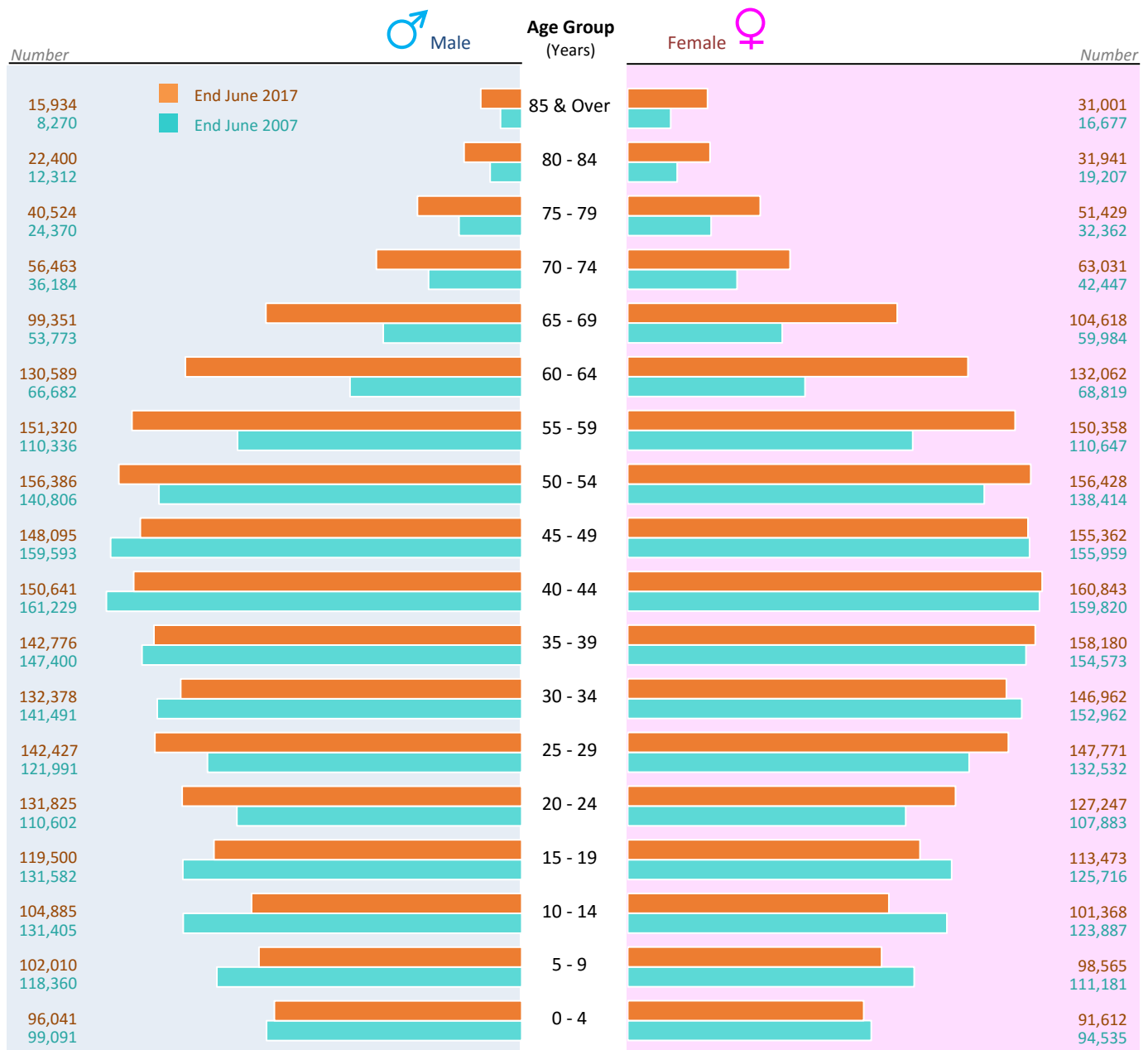


Resident Vital Rates

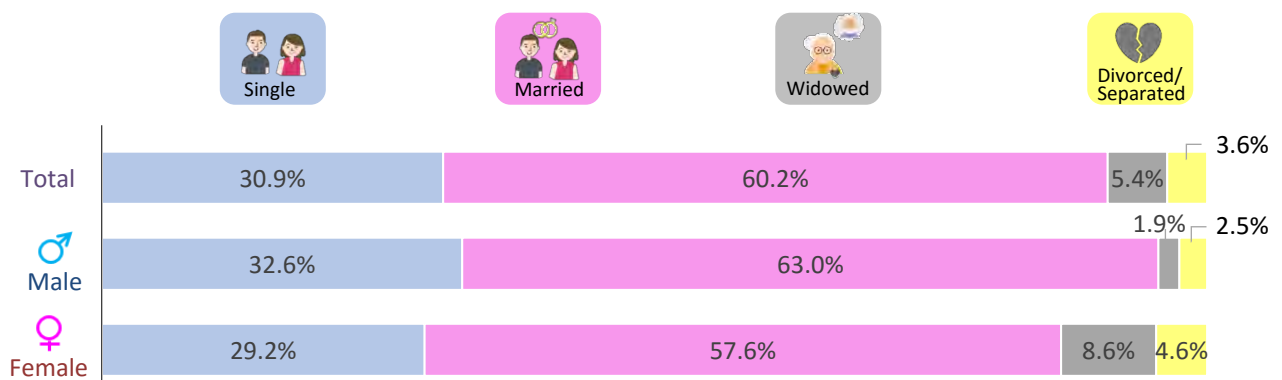
	Crude Birth Rate	Crude Death Rate	Infant Mortality Rate	Total Fertility Rate
	Per 1,000 Residents		Per 1,000 Resident Live-births	Per Female
1990	18.2	4.7	6.6	1.83
2000	13.7	4.5	2.5	1.60
2010	9.3	4.4	2.0	1.15
2015	9.7	4.8	1.7	1.24
2016	9.4	4.8	2.4	1.20
2017	8.9	5.0	2.2	1.16



Age Pyramid of the Resident Population, 2007 and 2017

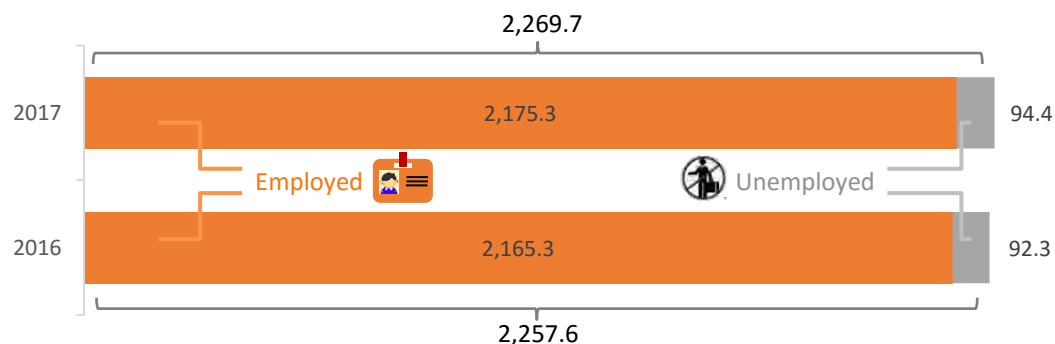


Singapore Residents Aged 15 Years and Over by Marital Status, 2017

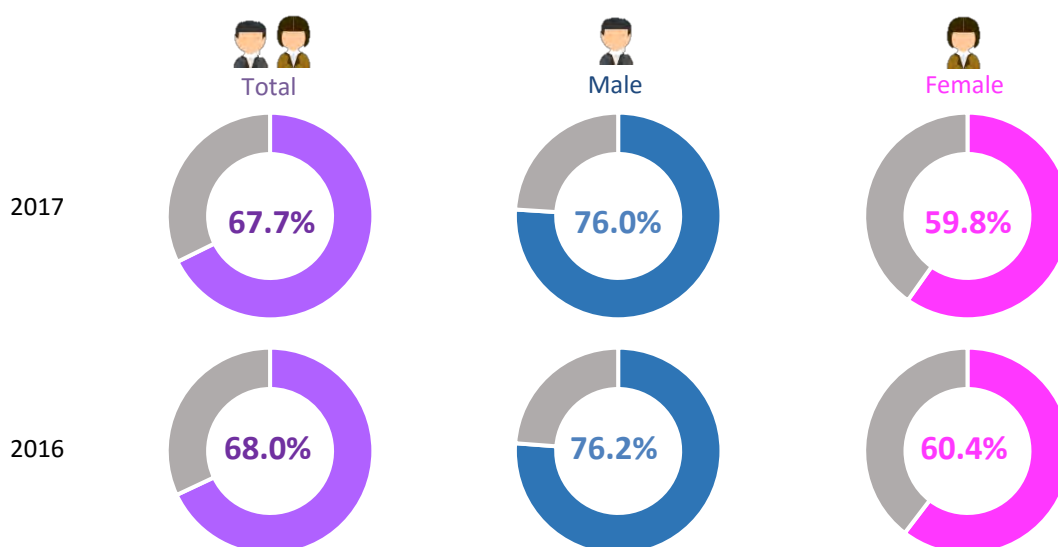




Resident Labour Force ('000) *



Resident Labour Force Participation Rate *

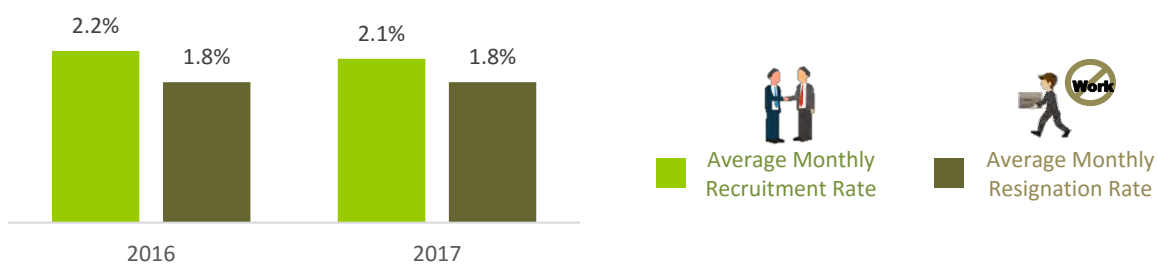


Resident Unemployment Rate (Seasonally Adjusted) *

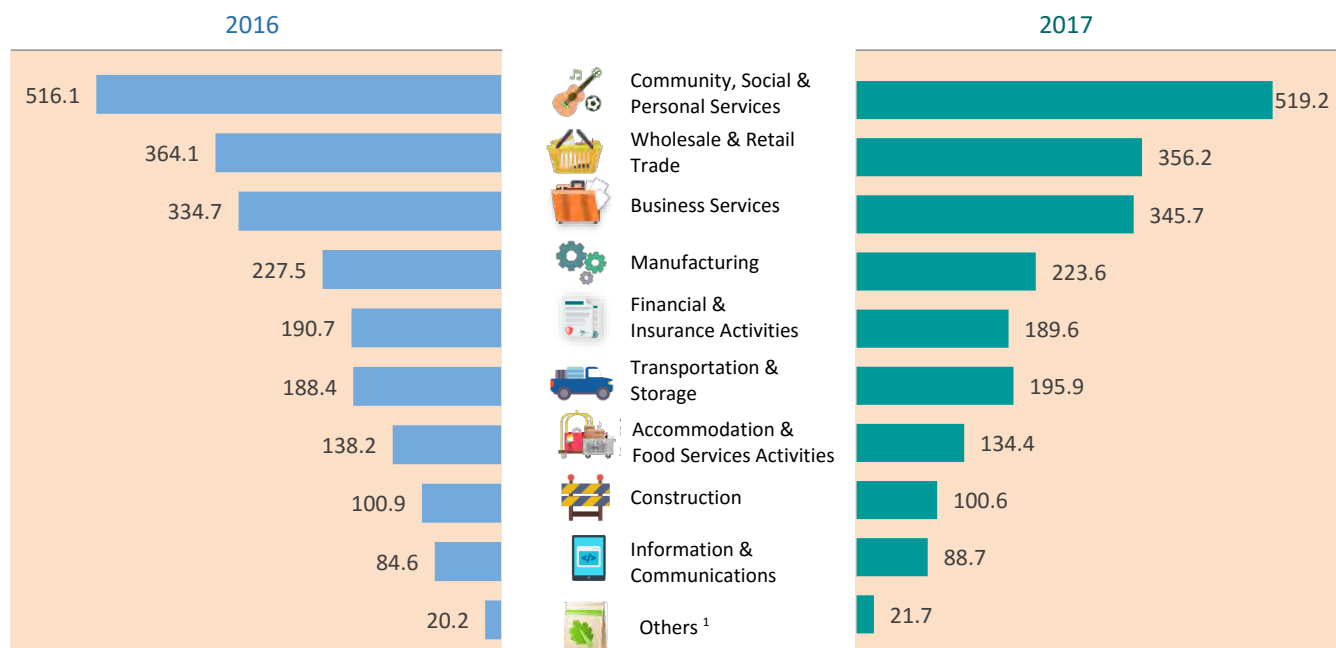


* Data are for mid-year.

Average Monthly Recruitment and Resignation Rates



Employment Structure by Industry ('000) *



* Data are for mid-year.

¹ Includes Agriculture, Fishing, Quarrying, Utilities and Sewage & Waste Management

Occupational Distribution *

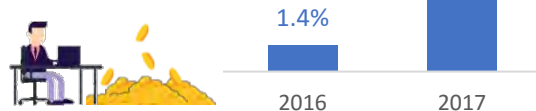
	2016	2017
	<i>Thousand</i>	
Employed Residents ¹	2,165.3	2,175.3
Legislators, Senior Officials & Managers	324.7	333.4
Professionals	412.9	435.7
Associate Professionals & Technicians	455.2	451.0
Clerical Support Workers	241.1	244.2
Service & Sales Workers	267.8	252.1
Production & Related Workers	392.0	390.1

* Data are for mid-year.

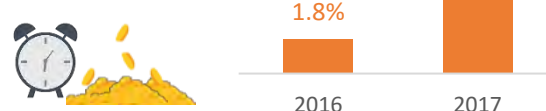
¹ Includes others not separately reflected

Changes in Value Added Per Worker and Per Actual Hour Worked (%)

Changes in Value Added Per Worker



Changes in Value Added Per Actual Hour Worked



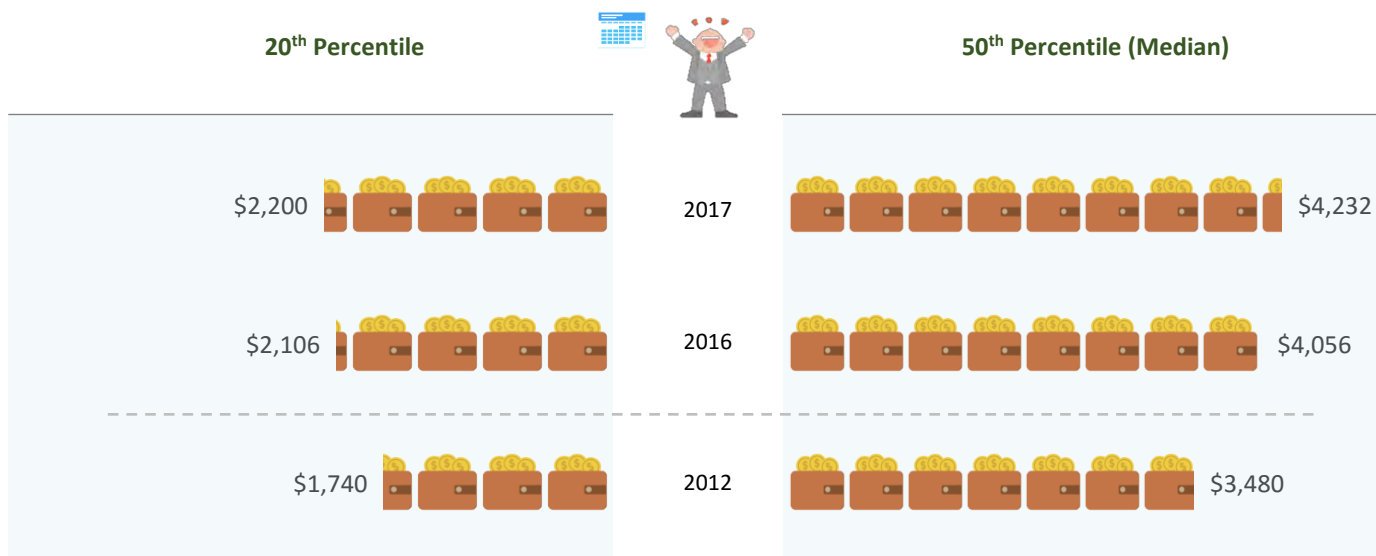
Average Weekly Paid Hours Worked





INCOME FROM WORK

Gross Monthly Income from Work (Including Employer CPF Contributions) of Full-time Employed Residents ¹

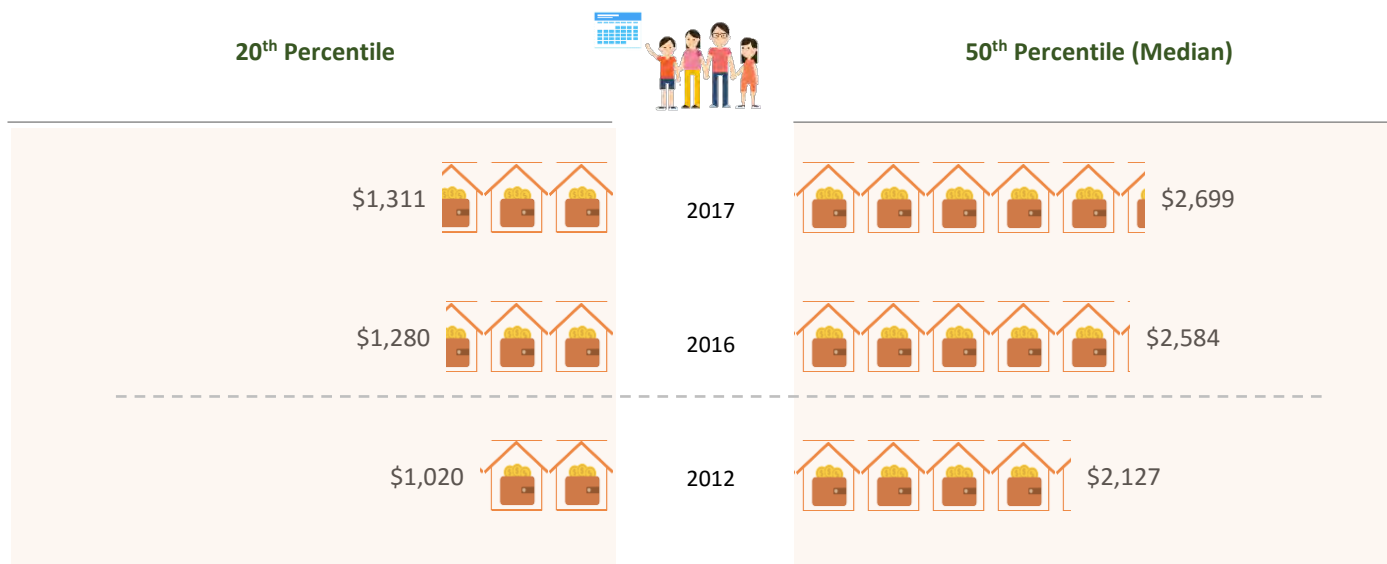


Notes : Data are for mid-year.

As data are obtained from a sample survey, income for the 20th percentile nearer the end of the income spectrum tend to be more volatile over shorter than longer periods.

¹ Refers to income earned from employment. For employees, it refers to the gross wages before deduction of employee CPF and personal income tax. It comprises basic wages, overtime pay, commissions, tips, other allowances and one-twelfth of annual bonuses. For self-employed persons, it refers to the average monthly profits from their business before deduction of income tax. Data exclude full-time National Servicemen.

Monthly Household Income from Work Per Household Member ¹ among Resident Employed Households ²



¹ Refers to the household income from work divided by the total number of members in the household. For example, if there is one person in a household of four who is working, his income is divided by four to derive the income per household member. Household income from work includes employer Central Provident Fund (CPF) contributions.

² A resident employed household refers to a household headed by a Singapore citizen or permanent resident and with at least one working person.



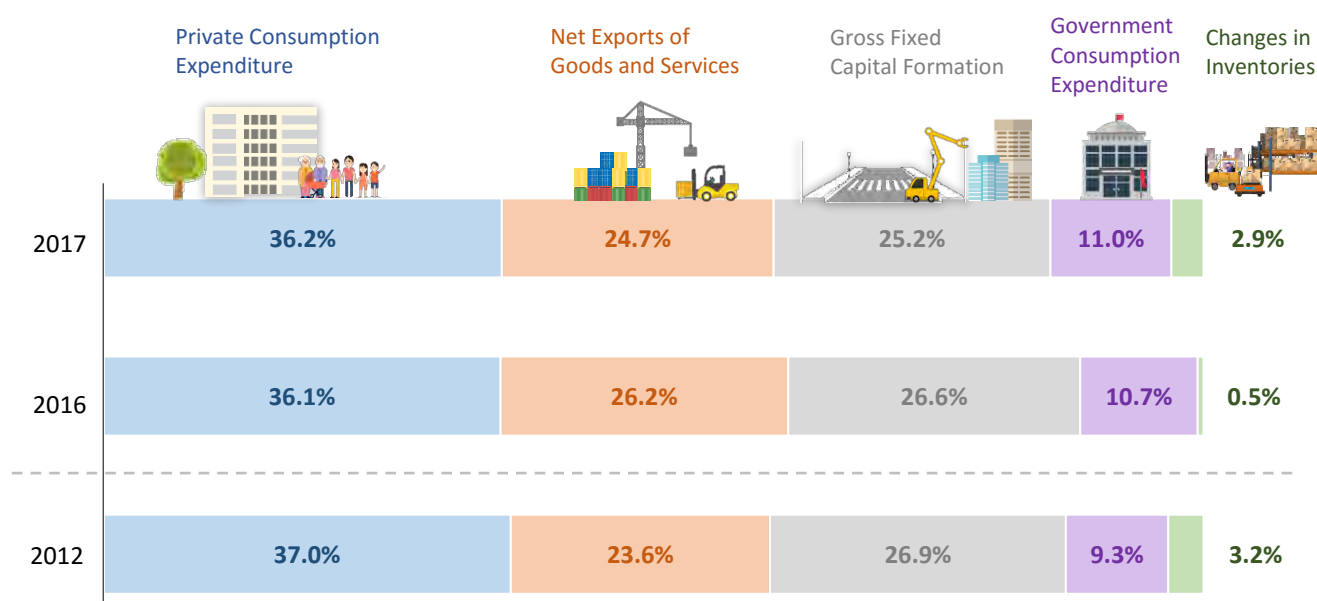
National Income

	Gross National Income (at Current Market Prices)	Per Capita GNI (at Current Market Prices)	Gross National Saving	Gross Domestic Product (at 2010 Market Prices)
	Million Dollars	Dollars		Million Dollars
2013	366,485.3	67,878	179,800.4	375,070.1
2014	385,322.9	70,447	192,767.7	389,637.4
2015	402,296.7	72,682	191,063.4	398,369.4
2016	405,836.5	72,376	196,966.5	407,918.4
2017	431,376.5	76,863	207,849.8	422,679.1

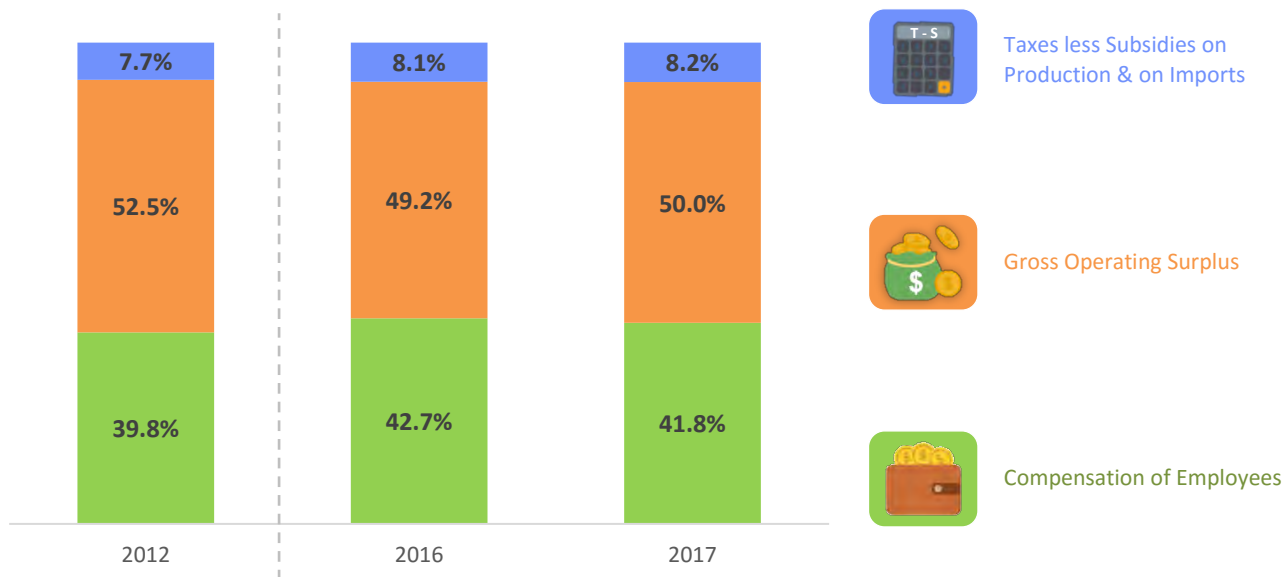
Gross Domestic Product

	Growth in Real GDP		Share of Nominal GDP	
	2016	2017	2016	2017
	Annual Percentage Change		Percentage Share	
Total	2.4	3.6	100.0	100.0
Goods Producing Industries	3.2	5.7	25.3	24.8
Manufacturing	3.7	10.1	18.8	19.2
Construction	1.9	-8.4	5.1	4.3
Services Producing Industries	1.4	2.8	70.5	71.3
Wholesale & Retail Trade	1.0	2.3	17.0	17.6
Transportation & Storage	1.3	4.8	6.9	7.2
Accommodation & Food Services	3.8	1.2	2.2	2.1
Information & Communications	3.6	3.3	4.2	4.2
Finance & Insurance	1.6	4.8	12.8	13.3
Business Services	-0.3	0.6	15.6	14.8

Expenditure Share on Gross Domestic Product (at Current Market Prices)



Income Share of Gross Domestic Product



BALANCE OF PAYMENTS

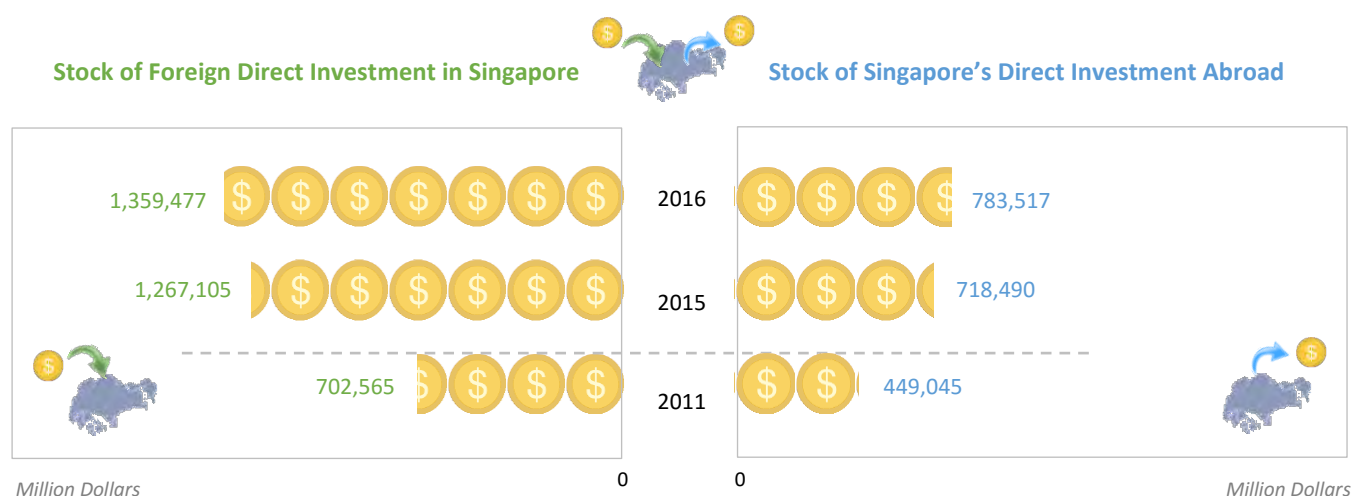
Balance of Payments

	2012	2016	2017
	<i>Million Dollars</i>		
A Current Account Balance	61,765.1	81,296.6	84,220.6
Goods Balance	90,702.8	118,092.3	116,966.3
Exports of Goods	553,391.6	501,563.0	547,934.3
Imports of Goods	462,688.8	383,470.7	430,968.0
Services Balance	-5,598.1	-6,281.2	-8,445.1
Exports of Services	162,428.4	218,195.7	227,410.2
Imports of Services	168,026.5	224,476.9	235,855.3
Primary Income Balance	-14,765.9	-22,102.3	-15,907.0
Secondary Income Balance	-8,573.7	-8,412.2	-8,393.6
B Capital and Financial Account Balance	30,301.6	83,693.7	46,499.8
Financial Account (Net)	30,301.6	83,693.7	46,499.8
Direct Investment	-45,152.5	-64,007.8	-53,789.6
Portfolio Investment	98,467.6	37,428.1	47,356.0
Financial Derivatives	-21,753.3	18,564.7	-18,692.8
Other Investment	-1,260.2	91,708.7	71,626.2
C Net Errors and Omissions	1,142.4	-58.2	120.4
D Overall Balance (A-B+C)	32,605.9	-2,455.3	37,841.2
E Reserve Assets ¹	32,605.9	-2,455.3	37,841.2

¹ Decrease in assets and liabilities, and net inflows in net balances, are indicated by a minus (-) sign.

INVESTMENT IN SINGAPORE AND ABROAD

Stock of Foreign Direct Investment in Singapore * and Singapore's Direct Investment Abroad *



Stock of Foreign Direct Investment in Singapore by Industry *

	2011	2015	2016
	<i>Million Dollars</i>		
Manufacturing	139,869	167,012	169,875
Construction	2,522	3,541	4,374
Wholesale & Retail Trade	122,198	281,616	298,012
Accommodation & Food Service Activities	4,600	6,291	6,473
Transport & Storage	30,339	40,482	28,473
Information & Communications	7,016	20,885	18,390
Financial & Insurance Services	317,893	591,755	674,706
Real Estate Activities	25,642	34,151	37,734
Professional, Scientific & Technical, Administrative & Support Services	42,793	106,095	105,696
Others	9,694	15,278	15,744

Stock of Singapore's Direct Investment Abroad by Industry *

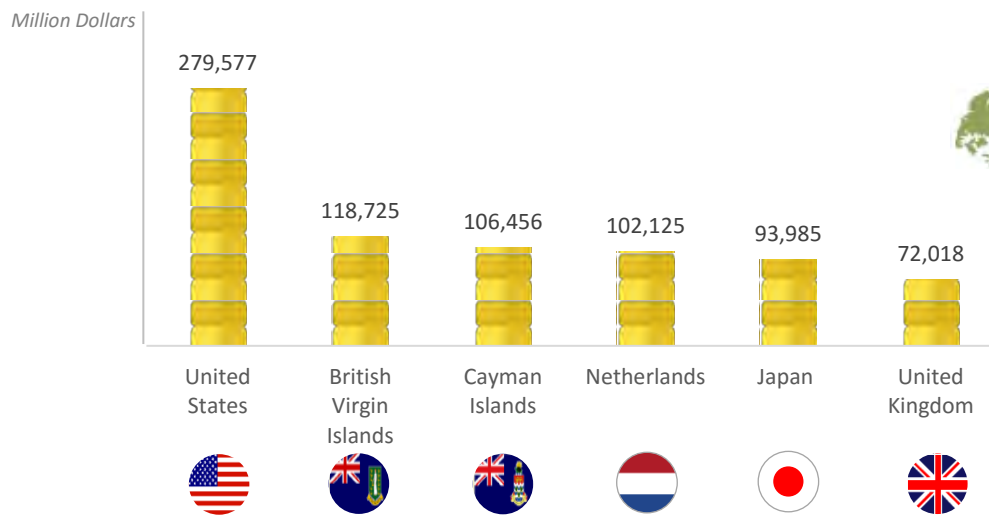
	2011	2015	2016
	<i>Million Dollars</i>		
Manufacturing	90,392	129,255	130,951
Construction	1,298	1,889	2,040
Wholesale & Retail Trade	31,803	62,901	63,863
Accommodation & Food Service Activities	4,380	4,579	4,902
Transport & Storage	11,114	20,932	22,396
Information & Communications	20,921	30,794	34,115
Financial & Insurance Services	211,547	356,757	378,103
Real Estate Activities	38,844	55,514	58,620
Professional, Scientific & Technical, Administrative & Support Services	8,313	21,273	26,041
Others	30,433	34,597	62,487

* Data are as at end of period.

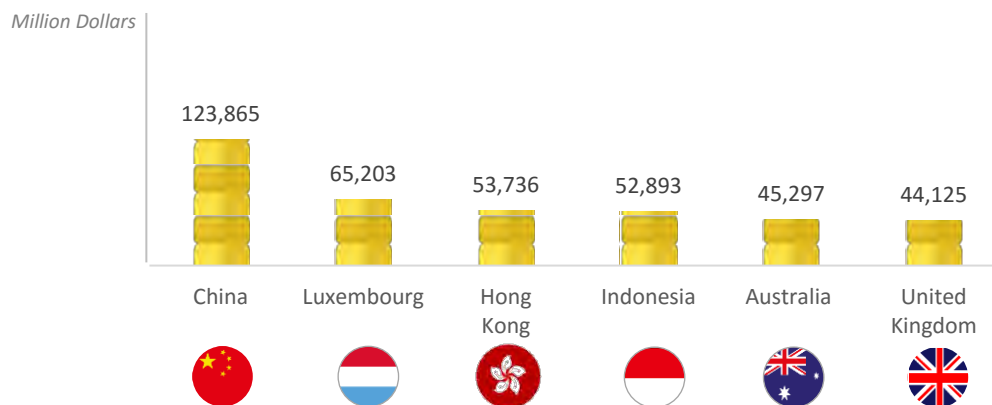
INVESTMENT IN SINGAPORE AND ABROAD



Stock of Foreign Direct Investment in Singapore by Country/Region, 2016 *

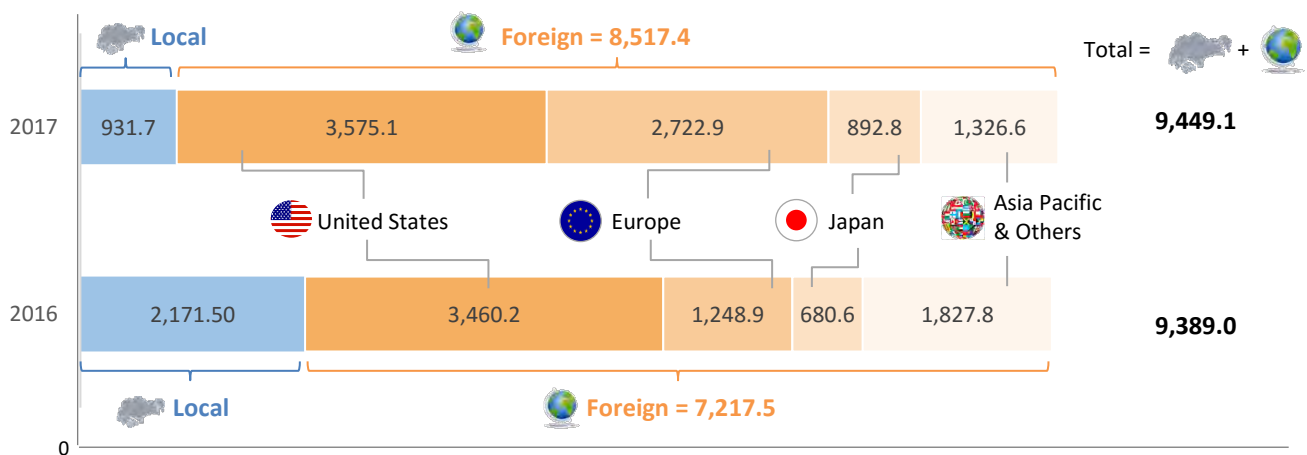


Stock of Singapore's Direct Investment Abroad by Country/Region, 2016 *



* Data are as at end of period.

Investment Commitments in Manufacturing ¹ and Services by Country of Origin



Fixed Asset Investments (Million Dollars)

¹ Includes servicing, engineering and R&D.

Formation and Cessation of Business Entities



Formation of All Business Entities ¹ by Industry

	2012	2016	2017
		<i>Number</i>	
Manufacturing	2,214	2,079	2,013
Construction	3,305	3,031	2,848
Wholesale Trade	10,192	9,388	9,786
Retail Trade	6,047	5,827	5,418
Transportation & Storage	2,280	11,472	7,739
Accommodation	130	83	95
Food & Beverage Service Activities	2,905	2,968	3,298
Information & Communications	4,097	5,209	5,425
Financial & Insurance Activities	5,331	4,526	5,015
Real Estate Activities	1,019	598	747
Professional, Scientific & Technical Activities	9,007	9,347	9,719
Administrative & Support Service Activities	3,154	3,146	2,828
Education, Health & Social Services	3,318	3,325	3,504
Arts, Entertainment, Recreation & Other Service Activities	3,377	3,479	3,324
Others	373	455	354

Cessation of All Business Entities ¹ by Industry

	2012	2016	2017
		<i>Number</i>	
Manufacturing	1,990	2,326	1,761
Construction	2,464	2,649	2,276
Wholesale Trade	8,943	10,769	8,007
Retail Trade	4,804	8,633	5,144
Transportation & Storage	1,771	5,520	7,103
Accommodation	60	83	66
Food & Beverage Service Activities	2,473	2,774	2,116
Information & Communications	2,722	4,643	3,526
Financial & Insurance Activities	2,681	3,318	3,036
Real Estate Activities	806	764	652
Professional, Scientific & Technical Activities	5,839	8,829	6,842
Administrative & Support Service Activities	2,527	3,187	2,293
Education, Health & Social Services	1,951	3,097	2,344
Arts, Entertainment, Recreation & Other Service Activities	3,180	3,840	2,819
Others	219	314	274

¹ Business entities include companies, sole-proprietorships, partnerships, limited liability partnerships, limited partnerships and public accounting firms.



Principal Manufacturing Statistics

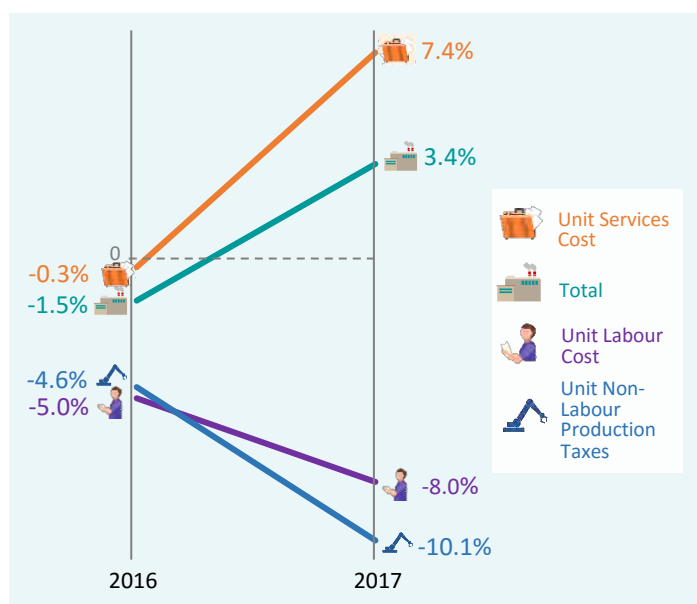
	2012	2016	2017
Establishments (number)	9,577	8,988	na
Workers (number)	424,622	384,726	371,922
Materials (\$ million)	168,685	129,440	154,450
Remuneration (\$ million)	19,694	20,996	21,123
Other Operating Cost (\$ million)	70,676	74,050	na
Manufacturing Output (\$ million)	288,279	259,496	305,351
Total Output (\$ million)	301,551	273,533	321,078
Value Added (\$ million)	62,189	70,044	74,965
Net Operating Surplus (\$ million)	34,475	39,365	na
Direct Exports (\$ million)	192,261	178,613	na
Net Fixed Assets (\$ million)	58,930	68,633	na
Gross Fixed Assets (\$ million)	140,440	179,132	na

Selected Averages and Ratios in the Manufacturing Sector

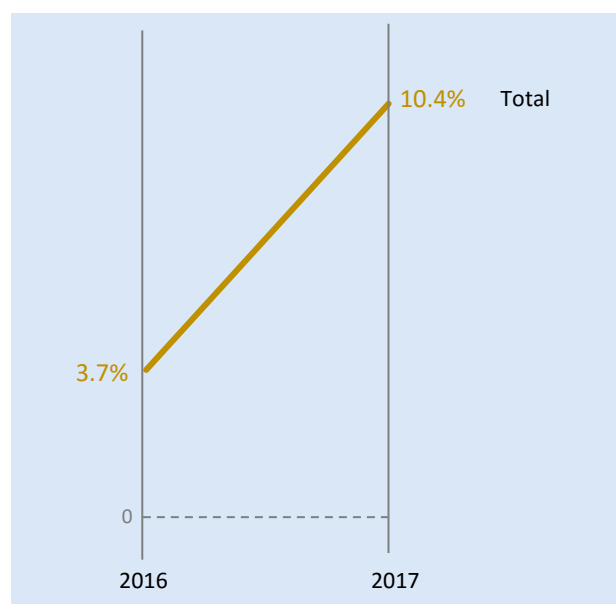
	2012	2016	2017
Remuneration Per Worker (\$'000)	46.4	54.6	56.8
Manufacturing Output Per Worker (\$'000)	678.9	674.5	821.9
Value Added Per Worker (\$'000)	146.5	182.1	201.6
Net Fixed Assets Per Worker (\$'000)	138.8	178.4	na
Remuneration to Total Output (%)	6.5	7.7	6.6
Remuneration to Value Added (%)	31.7	30.0	28.2
Value Added to Total Output (%)	20.6	25.6	23.3
Direct Exports to Manufacturing Output (%)	66.7	68.8	na
Direct Exports to Total Sales (%)	67.0	68.9	na

Indices of Unit Business Cost and Industrial Production (Annual Percentage Change)

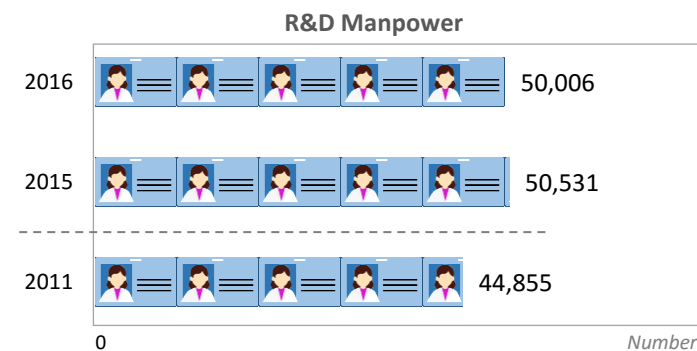
Unit Business Cost Index of Manufacturing (2010 = 100)



Index of Industrial Production (2015 = 100)

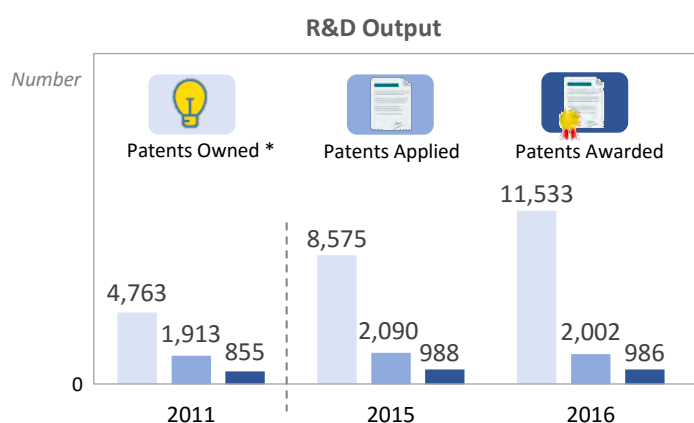
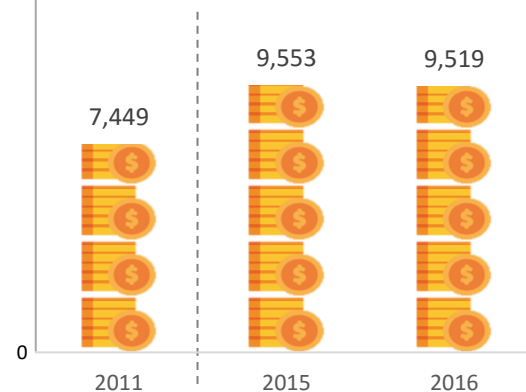


R&D Manpower, Expenditure and Output



Million Dollars

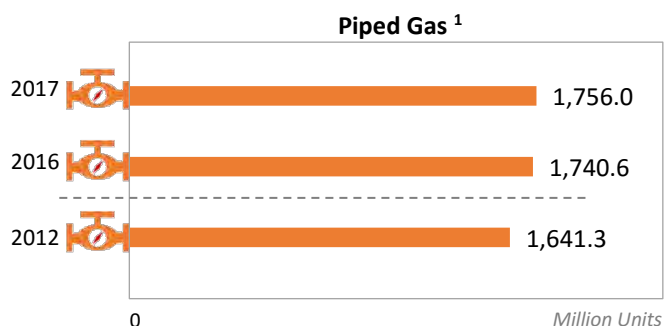
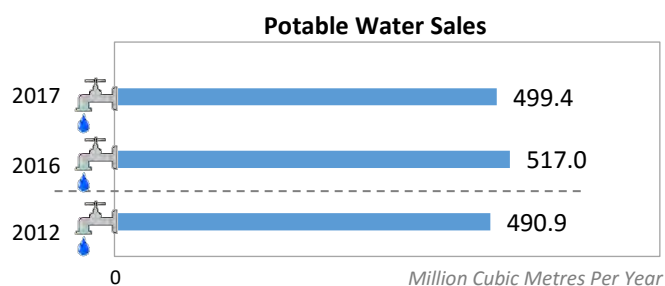
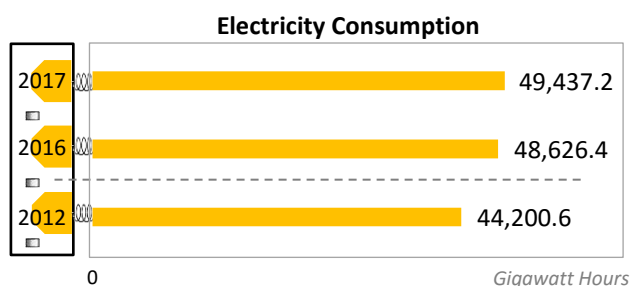
R&D Expenditure



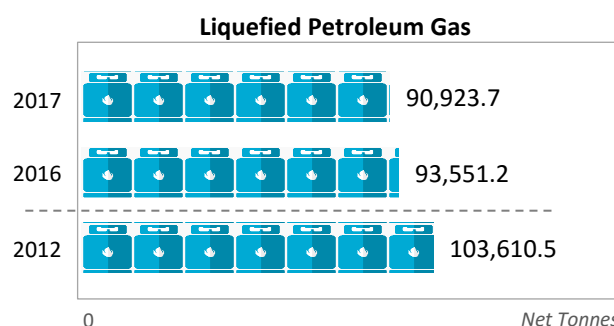
* Data are as at end of period.



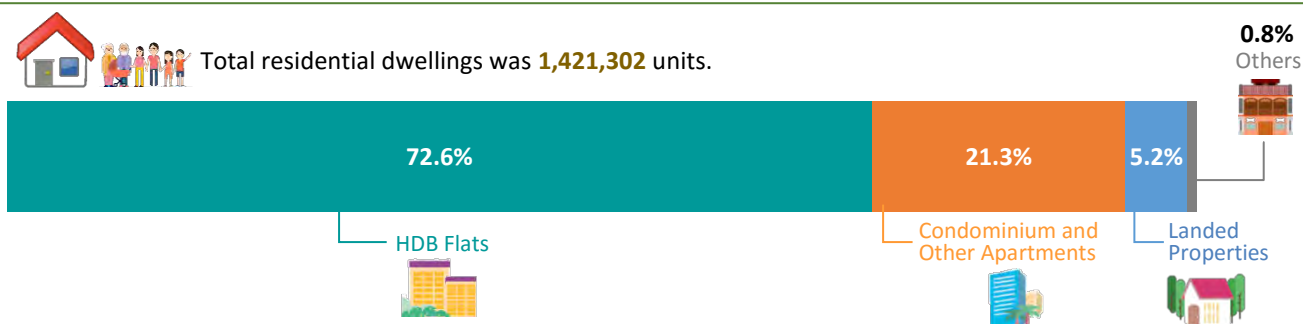
Electricity Consumption, Water and Gas Sales



¹ One Unit is equivalent to one kilowatt hour.



Residential Dwellings, 2017



Building Commencement

	2012	2016	2017
	<i>Number of Units</i>		
Private Residential Properties	21,395	6,918	5,397
	<i>'000 Square Metres Gross</i>		
Commercial Developments			
Office Space	578	154	223
Retail Space	237	132	97
Industrial Developments			
Factory Space	1,640	895	556
Warehouse Space	812	299	309

Stock of Private Residential, Commercial and Industrial Properties *









	2012	2016	2017
	<i>Number of Units</i>		
Private Residential Properties	277,620	348,080	364,295
Landed	70,388	72,595	72,761
Non-landed	207,232	275,485	291,534
	<i>'000 Square Metres Nett</i>		
Commercial Properties			
Office Space	7,270	7,730	7,924
Retail Space	5,579	6,046	6,075
Industrial Properties			
Factory Space	32,056	36,812	37,791
Warehouse Space	7,375	9,470	10,433

Supply of Private Residential, Commercial and Industrial Properties in the Pipeline *

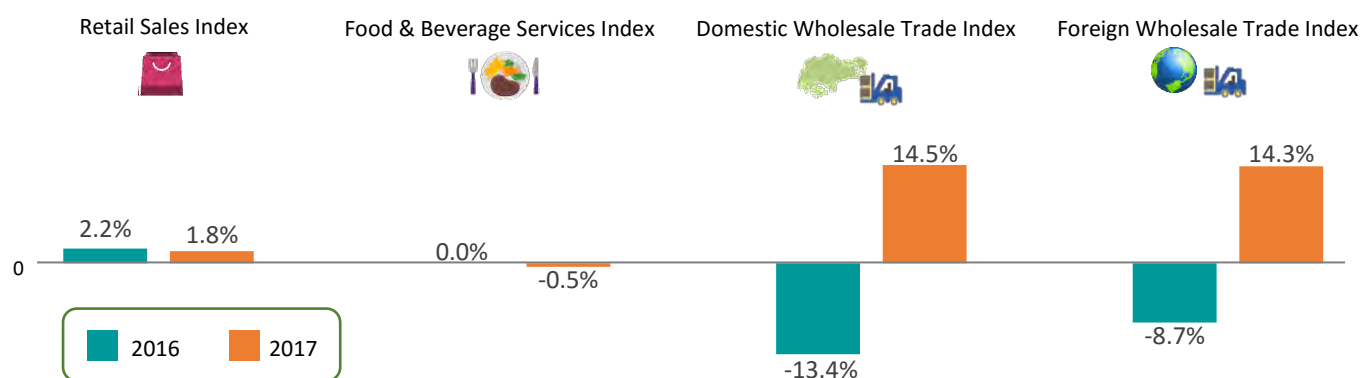
	2012	2016	2017
	<i>Number of Units</i>		
Private Residential Properties	96,230	48,368	50,852
Landed	3,860	1,352	1,234
Non-landed	92,370	47,016	49,618
	<i>'000 Square Metres Gross</i>		
Commercial Properties			
Office Space	1,276	887	785
Retail Space	980	616	555
Industrial Properties			
Factory Space	5,147	3,250	3,071
Warehouse Space	1,320	1,144	741

* Data are as at end of period.

Operating Receipts of the Services Industries

	2011 <i>Million Dollars</i>	2015 <i>Million Dollars</i>	2016 <i>Million Dollars</i>
 Wholesale Trade	1,981,370	2,274,366	2,045,350
 Retail Trade	40,816	46,114	47,677
 Transport & Storage Services	91,857	113,072	104,773
 Accommodation and Food & Beverage Services	12,694	15,406	15,653
 Information & Communications Services	39,748	58,783	63,840
 Business Services	104,164	139,734	147,228
 Recreation, Community & Personal Services	29,284	37,599	39,650
 Total	2,299,934	2,685,073	2,464,170

Annual Percentage Change in Indices of the Services Industries at Current Prices (2017=100)



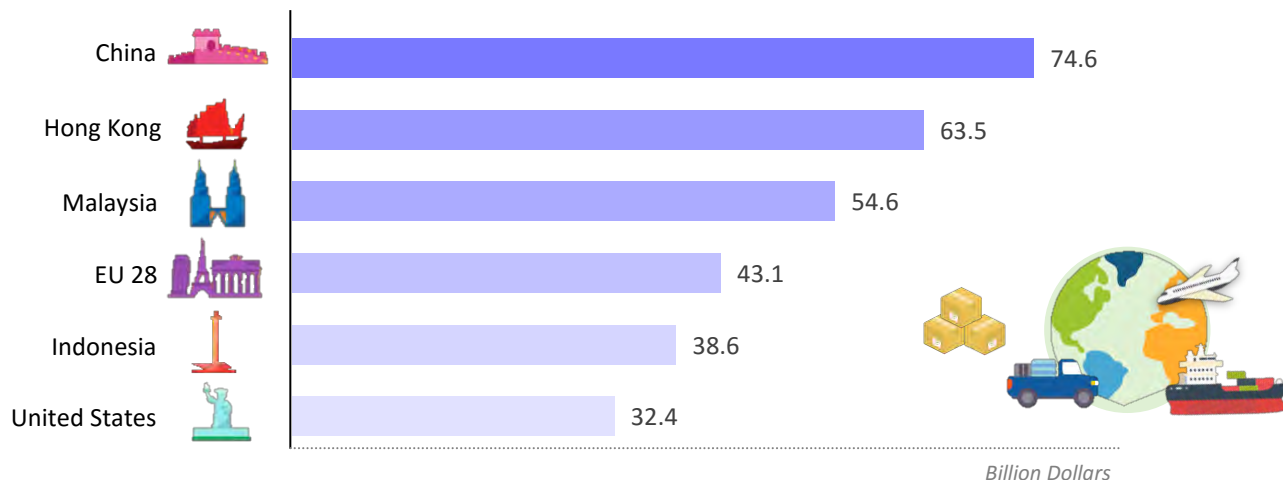
MERCHANDISE TRADE

Total Merchandise Trade

	2012	2016 <i>Million Dollars</i>	2017
Total at Current Prices	1,001,544	870,216	967,102
Merchandise Exports	519,354	466,912	515,001
Domestic Exports	285,169	223,933	259,302
Oil	106,815	63,375	84,566
Non-Oil	178,354	160,558	174,736
Re-Exports	234,185	242,978	255,699
Merchandise Imports	482,190	403,305	452,102
Total at 2012 Prices	1,001,544	1,088,451	1,152,327
Merchandise Exports	519,301	569,707	601,968
Domestic Exports	285,256	306,737	331,169
Oil	109,916	138,440	147,373
Non-Oil	178,340	168,298	183,796
Re-Exports	234,044	262,970	270,799
Merchandise Imports	482,241	518,747	550,360



Major Merchandise Export Markets, 2017



Merchandise Imports

Commodity Section	2012	2016	2017
<i>Million Dollars</i>			
Food	10,036	10,781	10,940
Beverages & Tobacco	4,015	4,427	4,735
Crude Materials	3,881	3,205	3,577
Mineral Fuels & Lubricants	154,804	70,530	99,861
Animal & Vegetable Oils	1,743	1,303	1,418
Chemicals & Chemical Products	32,401	32,135	36,993
Manufactured Goods	29,642	26,482	24,818
Machinery & Equipment	196,288	193,317	207,686
Electronics	115,648	117,229	129,724
Non-electronics	80,640	76,088	77,962
Miscellaneous Manufactures	33,935	37,169	38,438

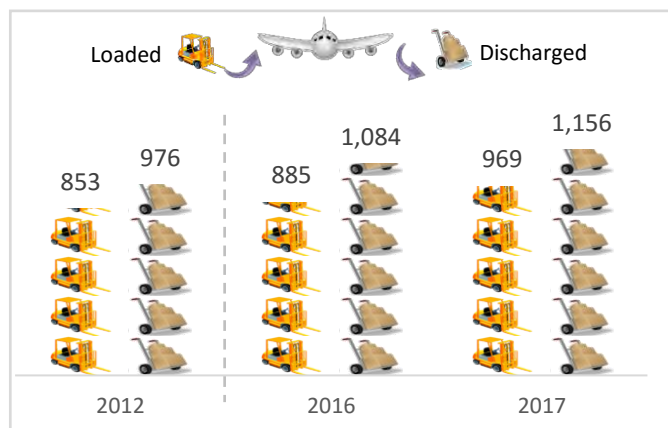
Merchandise Exports

Commodity Section	2012	2016	2017
<i>Million Dollars</i>			
Food	6,230	7,862	8,007
Beverages & Tobacco	4,355	5,349	5,197
Crude Materials	3,031	3,943	4,472
Mineral Fuels & Lubricants	130,901	69,239	90,182
Animal & Vegetable Oils	403	249	262
Chemicals & Chemical Products	67,518	64,507	70,220
Manufactured Goods	19,145	17,948	17,976
Machinery & Equipment	230,885	236,034	252,430
Electronics	153,270	157,766	169,606
Non-electronics	77,615	78,268	82,824
Miscellaneous Manufactures	38,615	42,971	45,846

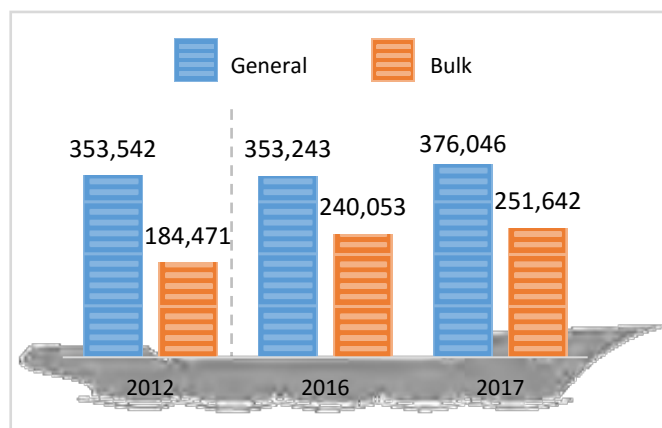


Cargo Handled

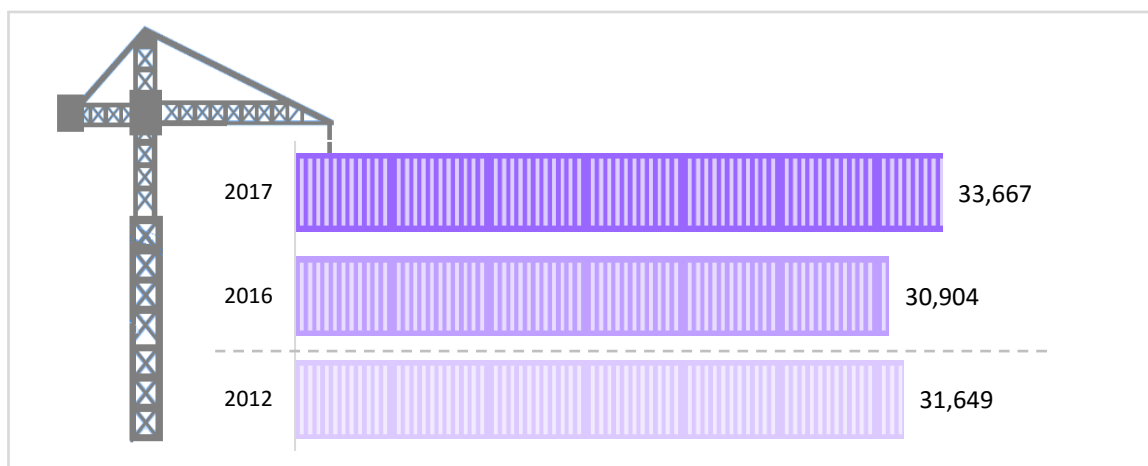
Air Cargo Handled ('000 tonnes)



Sea Cargo Handled ('000 tonnes)



Container Throughput ('000 TEUs)



Postal Articles Handled and Telecommunications

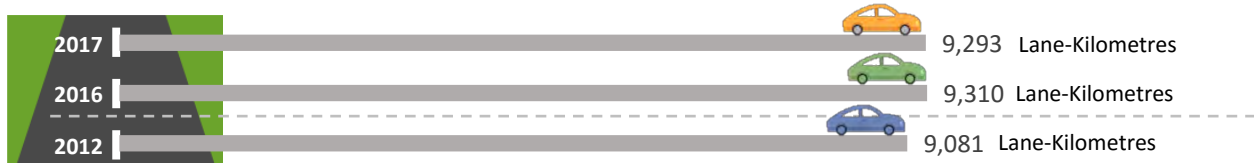
	2012	2016	2017
Postal Articles Handled (million)	2,030	1,897	1,720
Subscriptions* ('000)			
Fixed Line	1,990	2,003	1,983
Residential	1,214	1,296	1,299
Corporate/ Business	775	707	684
Mobile Phone	8,063	8,400	8,463
2G	1,582	132	na
3G	6,481	3,412	2,349
4G	na	4,855	6,114
Broadband	10,195	12,544	13,073
Residential Wired	1,278	1,336	1,343
Corporate Wired	93	119	127
Wireless	8,824	11,089	11,603
Total SMS Messages (million)	24,053	9,780	8,487
International Telephone Call Minutes (million)	13,445	23,639	21,242



Motor Vehicle Population *

		2012	2016	2017
		Number		
	Motor Vehicle Population	969,910	956,430	961,842
	Cars	605,149	552,427	546,706
	Rental Cars	14,862	51,336	68,083
	Taxis	28,210	27,534	23,140
	Buses	17,162	18,804	19,285
	Motorcycles & Scooters	144,110	143,052	141,916
	Goods & Other Vehicles	160,417	163,277	162,712

Length of Public Paved Roads *

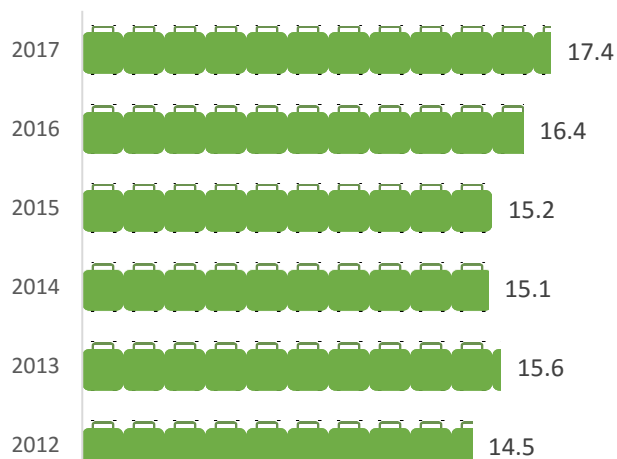


* Data are as at end of period.

TOURISM



International Visitor Arrivals



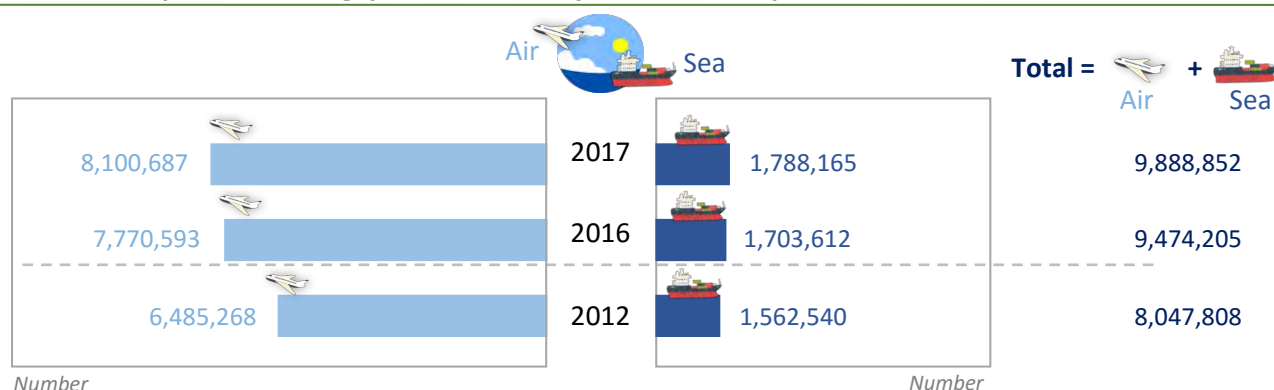
Million

Gazetted Hotel Statistics

	2012	2016	2017
Number of Gazetted Hotels	178	237	246
Available Room Nights ('000)	15,250.5	19,195.2	20,302.3
Standard Average Occupancy Rate (%)	85.7	83.1	84.6
Standard Average Room Rate (\$)	243.5	223.1	215.3
Room Revenue (\$ million)	3,184.3	3,559.1	3,696.9



Outbound Departures of Singapore Residents by Mode of Transport



Money Supply *

	2012	2016	2017
	<i>Million Dollars</i>		
Money Supply (M2)	475,392.5	562,087.4	580,066.5
Money Supply (M1)	140,709.1	172,753.5	183,699.3
Currency in Active Circulation	26,361.3	38,525.0	42,339.7
Demand Deposits	114,347.8	134,228.5	141,359.6
Quasi-Money	334,683.4	389,333.9	396,367.2
Fixed Deposits	175,270.8	189,277.6	186,964.2
Singapore Dollar Negotiable Certificates of Deposit	90.2	327.1	250.7
Savings & Other Deposits	159,322.4	199,729.2	209,152.3

* Data are as at end of period.

Exchange Rates (Average for the Year)

	2012	2016	2017
S\$ Per Unit of :			
Australian Dollar	1.2940	1.0272	1.0585
Chinese Renminbi	0.1981	0.2080	0.2043
Euro	1.6071	1.5286	1.5589
Hong Kong Dollar	0.1611	0.1780	0.1772
Malaysian Ringgit	0.4046	0.3333	0.3212
Pound Sterling	1.9803	1.8726	1.7782
US Dollar	1.2497	1.3815	1.3807
S\$ Per 100 Units of :			
Indian Rupee	2.3442	2.0557	2.1204
Indonesian Rupiah	0.0133	0.0104	0.0103
Japanese Yen	1.5672	1.2727	1.2313
Korean Won	0.1109	0.1190	0.1222
New Taiwan Dollar	4.2262	4.2831	4.5383
Philippine Peso	2.9592	2.9086	2.7396
Thai Baht	4.0199	3.9141	4.0695





Total Assets and Liabilities of Financial Institutions *

	2012	2016	2017
Commercial Banks (\$ million)	911,009.0	1,146,172.7	1,221,932.9
Merchant Banks (\$ million)	92,411.0	95,888.3	102,821.7
Asian Currency Units (US\$ million)	1,093,264.6	1,134,099.6	1,237,921.1

Loans and Advances of Domestic Banking Units to Non-Bank Customers *





	2012	2016	2017
		<i>Million Dollars</i>	
Total	490,706.5	617,347.4	651,931.6
Loans to Businesses	284,173.2	367,008.1	389,648.1
Manufacturing	27,166.3	26,227.6	26,161.2
Building & Construction ¹	78,704.0	121,387.2	120,390.1
General Commerce	57,349.8	63,958.1	68,487.8
Transport, Storage & Communication	13,089.2	20,998.7	22,140.6
Financial Institutions	64,895.1	80,391.2	98,865.6
Professional & Private Individuals	5,920.7	8,930.0	10,001.9
- Business Purposes			
Consumer Loans	206,533.3	250,339.5	262,283.4
Housing & Bridging Loans	152,003.0	192,099.8	200,251.7
Professional & Private Individuals			
Car Loans	12,523.5	7,858.1	8,412.5
Credit Cards	8,963.9	10,795.4	10,974.9

¹ Includes loans to building and building co-operative societies, building developers and real estate agents.

Domestic Interest Rates *

	2012	2016	2017
		<i>Per Cent Per Annum</i>	
Singapore Overnight Rate Average	0.0380	0.4595	0.8605
Prime Lending Rate	5.38	5.35	5.28
3-month Banks' Deposit Rate	0.14	0.19	0.14

Household Sector Balance Sheet *

Assets				Net Worth			
				<i>Million Dollars</i>			
				2012	2016	2017	
				Net Worth	1,378,668.6	1,613,167.3	1,725,040.3
				Liabilities			
				<i>Million Dollars</i>			
				2012	2016	2017	
 Financial Assets	828,370.3	1,060,036.2	1,153,986.9	 Mortgages	193,006.9	233,137.9	242,566.3
 Residential Property Assets	813,189.9	862,224.9	894,540.0	 Personal Loans	69,884.8	75,955.9	80,920.3
Total Assets	1,641,560.2	1,922,261.1	2,048,526.9	Total Liabilities	262,891.6	309,093.8	323,486.6

* End of period.



GOVERNMENT FINANCE



Government Finance

	FY2011	FY2015 <i>Million Dollars</i>	FY2016
Operating Revenue ¹	51,077.2	64,823.2	68,964.4
Corporate Income Tax	12,096.3	13,815.1	13,602.2
Personal Income Tax	6,871.4	9,234.9	10,526.2
Withholding Tax	1,258.0	1,402.0	1,474.1
Statutory Boards' Contributions	353.2	438.3	775.4
Assets Taxes	3,901.9	4,455.0	4,359.5
Customs and Excise Taxes	2,132.8	2,833.0	2,730.0
Goods and Services Tax	8,687.0	10,345.1	11,078.3
Motor Vehicle Taxes	1,919.6	1,759.7	2,148.4
Betting Taxes	2,373.4	2,719.0	2,682.0
Stamp Duty	3,175.1	2,769.0	3,278.5
Other Taxes	3,307.3	5,876.2	6,044.5
Vehicle Quota Premiums	2,112.0	5,424.8	6,550.6
Fees and Charges (Excluding Vehicle Quota Premiums)	2,587.2	3,248.9	3,208.9
Others	302.0	502.2	505.7
Total Expenditure ²	46,563.4	67,447.0	71,044.9
Social Development	21,659.5	31,292.6	33,839.4
Security & External Relations	14,805.7	18,451.6	19,541.0
Economic Development	8,570.2	15,540.7	15,300.5
Government Administration	1,528.0	2,162.2	2,363.9
Primary Surplus/Deficit	4,513.7	-2,623.9	-2,080.4
Special Transfers	8,426.7	10,369.2	6,372.3
Special Transfers Excluding Top-ups to Endowment and Trust Funds	2,909.2	4,369.2	2,772.3
Basic Surplus/Deficit	1,604.5	-6,993.0	-4,852.7
Top-ups to Endowment and Trust Funds	5,517.5	6,000.0	3,600.0
Net Investment Returns Contribution	7,915.6	8,943.3	14,577.5
Overall Budget Surplus/Deficit	4,002.7	-4,049.7	6,124.8





Notes : Data refer to financial year which begins in April of the current year and ends in March of the following year.



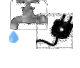




¹ Excludes the repayment of loans and advances, interest income, investment income and capital receipts.

² Comprises Operating Expenditure and Development Expenditure. Development Expenditure excludes loans to statutory boards, industrial and commercial enterprises and land-related expenditure items.



Annual Percentage Change of Consumer Price Index (2014 = 100)

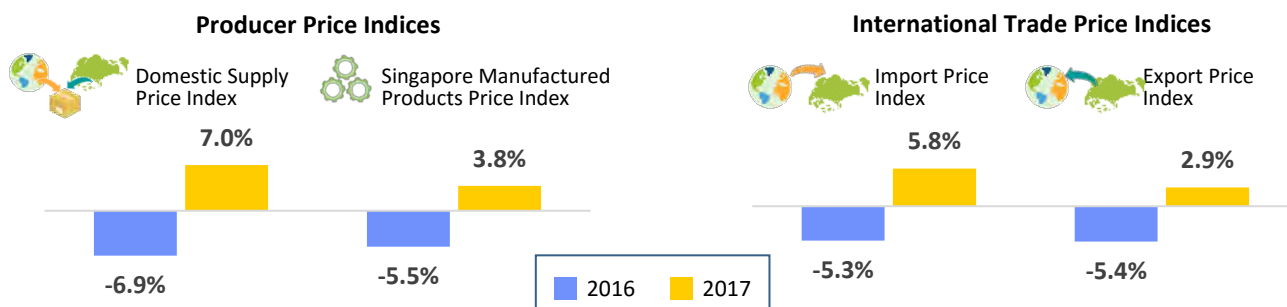
	All Items	
	-0.5%	0.6%
	2016	2017
	All Items less Imputed Rentals on Owner-Occupied Accommodation	
	0.3%	1.7%
	2016	2017
	All Items less Accommodation	
	0.3%	1.8%
	2016	2017
	MAS Core Inflation Measure	
	0.9%	1.5%
	2016	2017

... at Division Level		
	2016	2017
 Food	2.1%	1.4%
 Clothing & Footwear	0.2%	0.6%
 Housing & Utilities	-4.1%	-2.5%
 Household Durables & Services	1.8%	1.1%
 Health Care	1.1%	2.5%
 Transport	-2.4%	2.6%
 Communication	-0.4%	0.6%
 Recreation & Culture	0.9%	0.3%
 Education	3.1%	3.0%
 Miscellaneous Goods & Services	0.3%	0.1%

Consumer Price Index for Households in Different Income Groups, 2017 (2014 = 100)

	General Households	Lowest 20%	Middle 60%	Highest 20%
<i>Annual Percentage Change</i>				
All Items	0.6	-0.1	0.5	0.8
Food	1.4	1.5	1.4	1.3
Clothing & Footwear	0.6	0.8	0.5	0.7
Housing & Utilities	-2.5	-2.6	-2.6	-2.4
Household Durables & Services	1.1	0.8	0.8	1.3
Health Care	2.5	3.2	2.6	2.1
Transport	2.6	1.0	2.3	3.0
Communication	0.6	0.5	0.6	0.5
Recreation & Culture	0.3	0.0	0.2	0.4
Education	3.0	3.1	3.0	3.1
Miscellaneous Goods & Services	0.1	-0.1	-0.1	0.5
All Items less Imputed Rentals on Owner-Occupied Accommodation	1.7	1.8	1.7	1.8

Producer and International Trade Price Indices (2012 = 100)



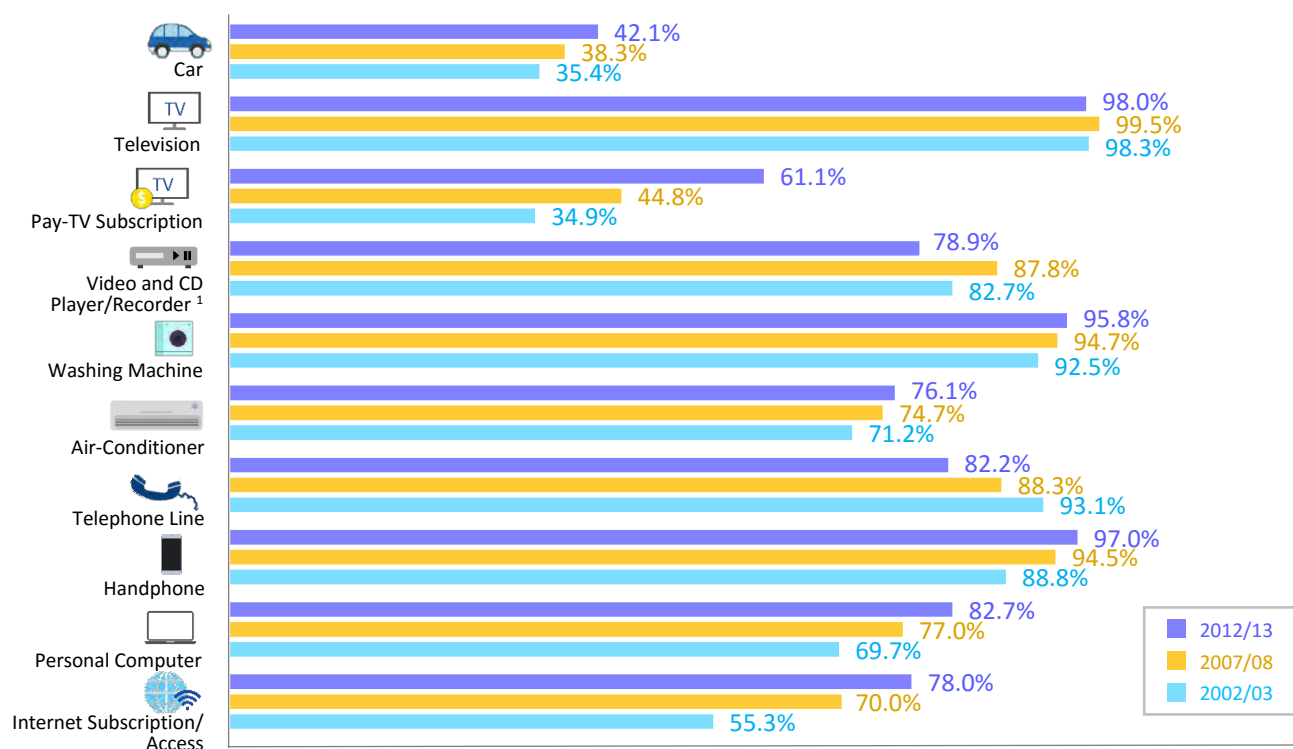
Property Price Index *

	2016	2017
	Annual Percentage Change	
Residential (1st Quarter 2009 = 100)		
Private Residential Properties	-3.1	1.1
Housing & Development Board Resale Flats	-0.1	-1.5
Commercial (4th Quarter 1998 = 100)		
Office Space	-2.8	-2.4
Retail Space	-5.4	-8.8
Industrial (4th Quarter 2012 = 100)	-9.1	-5.7

* Data are as at end of period.

CONSUMER DURABLES

Ownership/Availability of Household Consumer Durables/Services



¹ Comprises player/recorder for Laser Disc, Video Compact Disc, Digital Versatile Disc, Compact Disc and Blu-Ray.

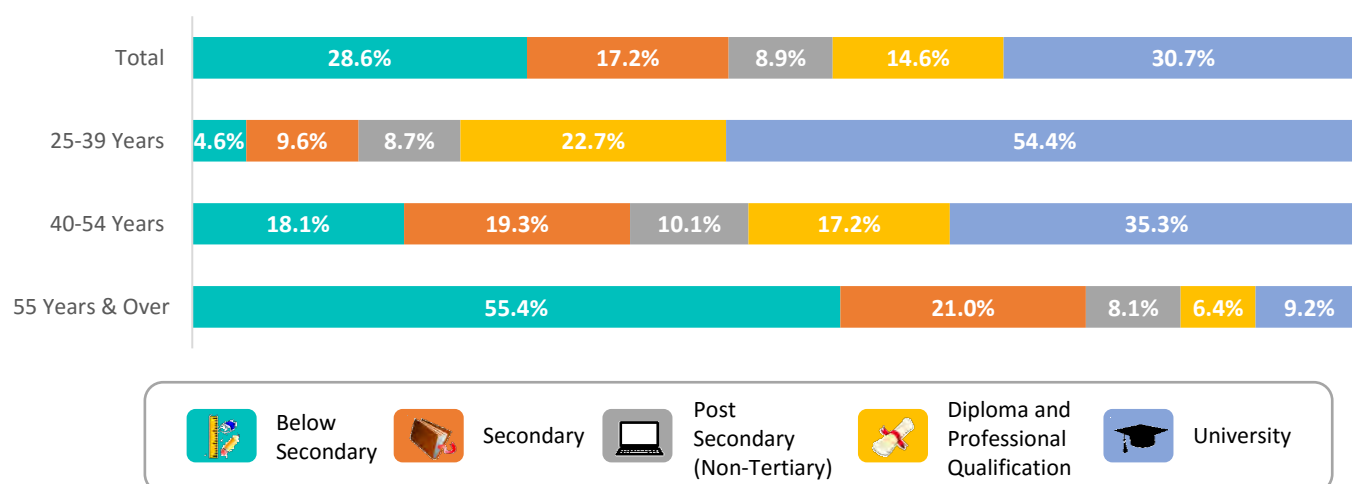
Per Cent of Households



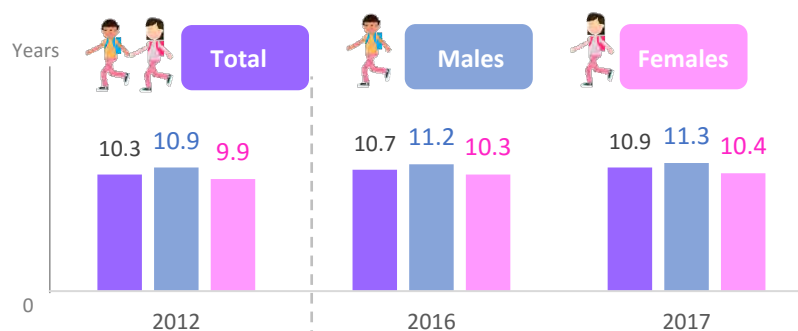
Government Recurrent Expenditure on Education Per Student

	FY2012	FY2016	FY2017
		<i>Dollars</i>	
Primary Schools	7,396	10,596	11,387
Secondary Schools	9,940	13,869	14,744
Junior Colleges	12,806	16,602	18,002
Institute of Technical Education	11,837	13,968	14,585
Polytechnics	14,487	15,934	16,569
Universities	20,777	21,757	21,626

Education Attainment ** of Residents Aged 25 Years & Over, 2017

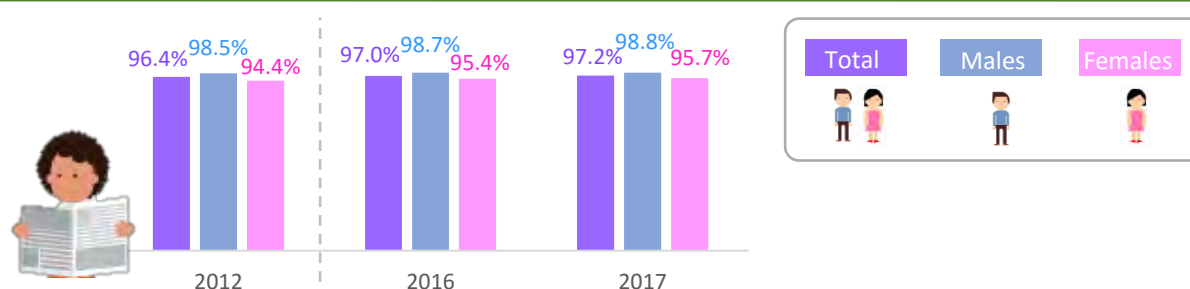


Mean Years of Schooling ** Among Residents Aged 25 Years & Over



** Data pertain to residents who are not attending educational institutions as full-time students.
The data include those who are upgrading their qualifications through part-time courses while working.

Literacy Rate of Residents Aged 15 Years & Over





Hospital Beds & Admissions, Public Sector Outpatient Attendances and Day Surgeries

	2012	2016	2017
	<i>Number</i>		
Hospital Beds			
Acute Hospitals ¹	8,725	10,318	10,340
Psychiatric Hospitals	2,010	1,950	1,950
Community Hospitals	842	1,663	1,663
Hospital Admissions			
Acute Hospitals ¹	459,902	546,256	568,117
Psychiatric Hospitals	8,382	9,028	9,316
Community Hospitals	7,751	13,881	16,355
Public Sector Outpatient Attendances			
Specialist Outpatient Clinics	4,353,385	4,921,017	4,937,001
Accident & Emergency Departments	985,289	1,008,718	993,458
Polyclinics	4,614,038	5,263,999	5,925,787
Dental Clinics	893,058	1,048,220	1,051,515
Day Surgeries	246,313	321,623	334,864

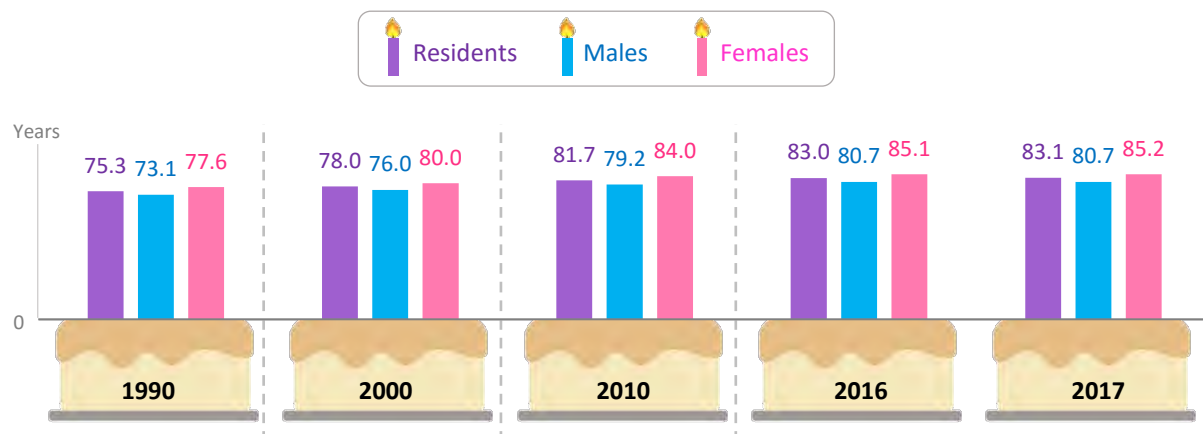
¹ Comprises both general hospitals and specialty centres (excluding Psychiatric Hospitals) with acute care inpatient facilities.

Registered Health Personnel

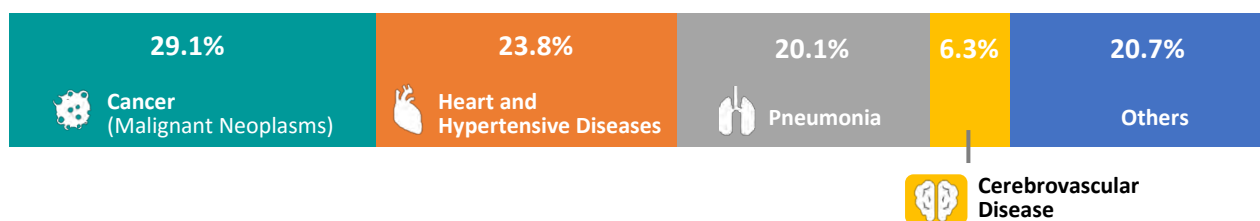
	2012	2016	2017
	<i>Number</i>		
 Doctors	10,225	12,967	13,386
 Dentists	1,699	2,198	2,293
 Pharmacists	2,172	2,875	3,047
 Registered Nurses	25,971	31,615	32,672
 Enrolled Nurses	8,274	8,781	8,631
 Registered Midwives	262	165	137
 Optometrists and Opticians	2,478	2,650	2,605
 Occupational Therapists	na	1,067	1,125
 Physiotherapists	na	1,693	1,814
 Speech Therapists	na	524	595
 Traditional Chinese Medicine (TCM) Physicians	2,538	2,868	2,952
 Acupuncturists	235	247	254




Life Expectancy at Birth



Major Causes of Death, 2017



Air Quality ¹

	2012	2016	2017
	Per Cent		
 Days with 'Good' and 'Moderate' Air Quality	99.0	99.0	99.5
 Days with 'Unhealthy' Air Quality	1.0	1.0	0.5
 Days with 'Very Unhealthy' and 'Hazardous' Air Quality	0.0	0.0	0.0



¹ Measured by Pollutant Standards Index (PSI) which includes Sulphur Dioxide (SO₂), Particulate Matter (PM₁₀ and PM_{2.5}), Nitrogen Dioxide (NO₂), Carbon Monoxide (CO) and Ozone (O₃).







CULTURE AND RECREATION

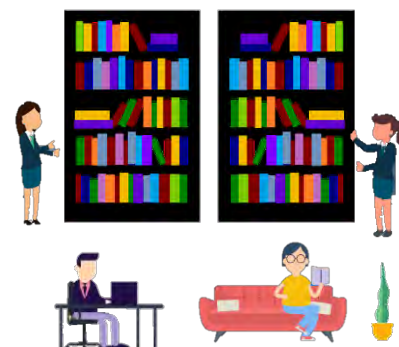


Pay TV Subscribers and Cinema Attendances *

	2012	2016	2017
Pay TV Subscribers ('000)	934	906	859
Cinemas (number of screens)	187	241	249
Seating Capacity ('000)	35	41	42
Attendances ('000)	21,167	21,933	20,382

National Library Membership, Physical Collections and Loan of Physical Library Materials

 National Library Board Singapore	2012	2016	2017
	<i>Million</i>		
 Membership	2.1	2.4	2.4
 Total Physical Collections	8.3	7.5	7.5
 Loan of Physical Library Materials	38.1	32.1	29.3



The Arts

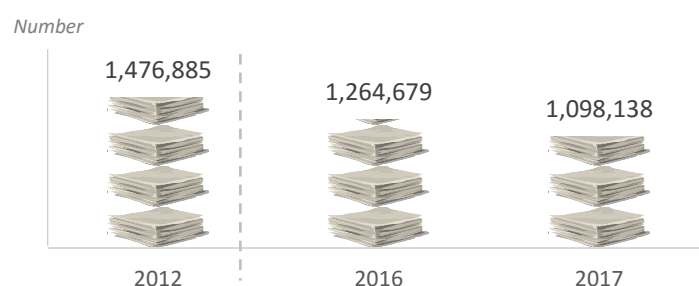
	2011	2015	2016
Performing Arts			
Ticketed Performances (number)	3,416	3,323	3,430
Ticketed Attendances ('000)	2,311.3	1,946.3	1,812.7
Visual Arts Exhibitions (number)	858	1,041	1,114

Utilisation of Sports Facilities

	2012	2016	2017
	<i>Number</i>		
Attendances			
Swimming Pool	7,034,166	7,081,651	7,062,603
Gymnasium	2,298,340	2,451,235	2,477,814
Bookings			
Badminton	538,381	669,217	727,432
Tennis	141,621	155,931	156,807
Table-tennis	86,706	116,237	120,260
Squash	34,479	54,704	54,591
Basketball	27,646	33,978	48,016

* Data are as at end of period.

Daily Newspaper Circulation





SOURCES OF DATA

Most of the data series in this publication are compiled by the Singapore Department of Statistics. A number of key indicators are obtained or computed by the Department based on basic data provided by departments and research and statistics units in various ministries and statutory boards.

Subject Matter	Sources of Data
 Land Area	 Singapore Land Authority
 Labour Force	 Ministry of Manpower
 Business Entities	 Accounting and Corporate Regulatory Authority
 Manufacturing	 Economic Development Board
 Research and Development	 Agency for Science, Technology and Research
 Utilities	 Ministry of the Environment and Water Resources
	 Energy Market Authority
 Construction and Real Estate	 Urban Redevelopment Authority
	 JTC Corporation
 Merchandise Trade	 Enterprise Singapore
 Transport	 Maritime and Port Authority of Singapore
	 Civil Aviation Authority of Singapore
	 Land Transport Authority
 Communications	 Info-communications Media Development Authority of Singapore
 Tourism	 Singapore Tourism Board
	 Immigration & Checkpoints Authority
 Finance	 Monetary Authority of Singapore
 Government Finance	 Accountant-General's Department
 Prices	 Urban Redevelopment Authority
	 JTC Corporation
 Education	 Ministry of Education
 Health	 Ministry of Health
	 Immigration & Checkpoints Authority
 Environment	 National Environment Agency
 Culture and Recreation	 National Library Board
	 National Arts Council
	 People's Association
	 Sport Singapore

Notes and Notation

Figures may not add up to the totals due to rounding. Some figures, particularly those for the most recent time periods, are provisional and may be subject to revision.

- na not available
- nil or negligible
- \$ Singapore Dollars (unless otherwise stated)

Free Access to More Data

Obtain statistical data series providing a comprehensive and current statistical view of Singapore's economic and socio-demographic characteristics through the **SingStat Website** at <https://www.singstat.gov.sg/tablebuilder>.

Create customised data tables, export them in different file formats or download multiple tables at one go. Developer API is also available for ease of data retrieval.

Electronic Services



Download the **SingStat Mobile App** and have the latest key Singapore official statistics at your fingertips! You can choose to receive notifications on updates for preferred indicators, download tables or share charts via social media and perform computation for quick analyses. For more information, visit:

<https://www.singstat.gov.sg/our-services-and-tools/singstat-mobile-app>



Receive notifications of the latest statistical releases via email or SMS! Subscribe to **SingStat Express**. Go to:

<https://www.singstat.gov.sg/whats-new/sign-up-for-alerts>



Receive statistical news highlights and hyperlinks to the source documents whenever the updates are posted with **Really Simple Syndication**. For more information, visit:

<https://www.singstat.gov.sg/whats-new/really-simple-syndication-rss>



**For statistical enquiries or
suggestions, you are welcome to:**



Email us at:
info@singstat.gov.sg



Call us at:
1800 323 8118



Ask Jamie@SingStat

Chat with our
Virtual Assistant at:
www.singstat.gov.sg

Singapore Department of Statistics

100 High Street #05-01

The Treasury

Singapore 179434