

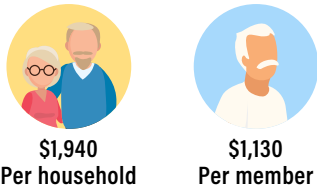
CONSUMER PRICE INDEX (CPI) FOR RETIREE HOUSEHOLDS

Among all resident households in 2020, **7.5 per cent** were households comprising solely non-employed persons aged 65 years and above.

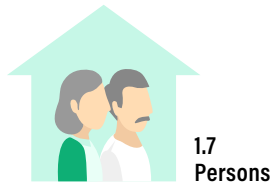


Household Characteristics in 2017/18*

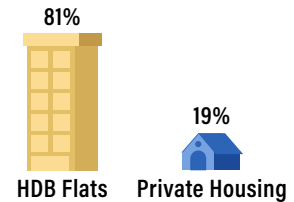
Average Monthly Household Expenditure



Average Household Size



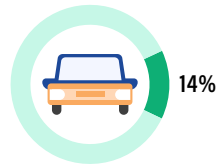
Type of Dwelling



With at Least 1 Employed Person/Full-time Student



Owned at Least 1 Car



Has at Least 1 Foreign Domestic Worker

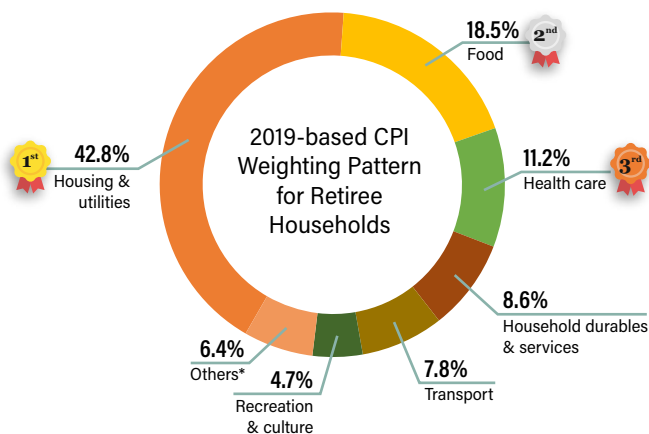


* Based on Household Expenditure Survey 2017/18. View more definitions related to the CPI for retiree households in our glossary.

CPI Weighting Pattern

Retiree households spent most on **housing & utilities**, **food** and **health care**.

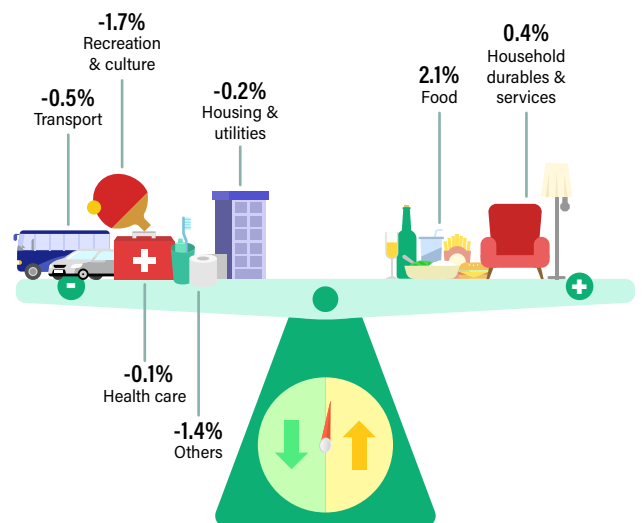
Compared to other household groups, retiree households had the largest expenditure weight share in **household durables & services** and **health care**, reflecting the older age composition of household members.



* Others include Clothing & footwear, Communication, Education, as well as Miscellaneous goods & services.

Inflation Rate in 2020

In 2020, the CPI-All Items for retiree households **marginally rose 0.1 per cent** as higher food prices and cost of accommodation offset the lower costs of electricity and outpatient services.



Check out the interactive dashboard on **"Consumer Price Index by Household Group"** to explore the trends by household group.

CONSUMER PRICE INDEX (CPI) FOR HOUSEHOLDS WITH YOUNG CHILDREN

Among all resident households in 2020, **26.9 per cent** were households with at least one child of household reference person aged below 16 years.



Household Characteristics in 2017/18*

Average Monthly Household Expenditure



\$6,600
Per household



\$1,520
Per member

Average Household Size



4.4
Persons

Type of Dwelling



HDB Flats



Private Housing

76%

24%

With at Least 1 Employed Person/Full-time Student



97%



82%

Owned at Least 1 Car



49%

Has at Least 1 Foreign Domestic Worker



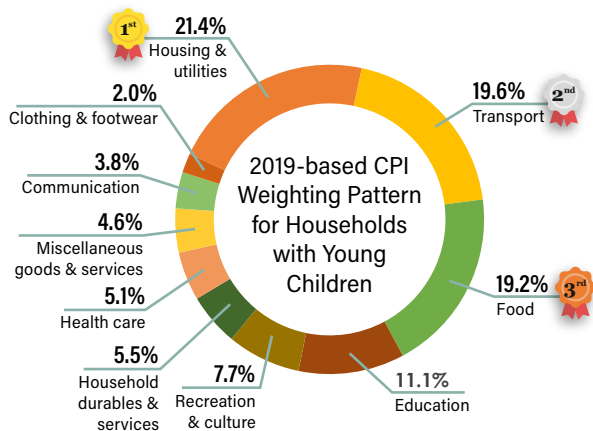
26%

* Based on Household Expenditure Survey 2017/18. View more definitions related to the CPI for households with young children in our glossary.

CPI Weighting Pattern

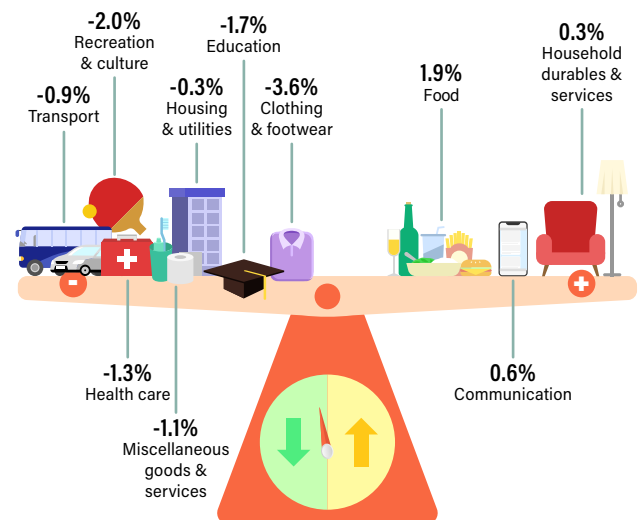
Housing & utilities, transport and **food** were the top three expenditure divisions.

Compared to other household groups, households with young children had the largest expenditure weight share in **education**, given that they had the highest proportion of full-time students among all household groups.



Inflation Rate in 2020

In 2020, the CPI-All Items for households with young children **fell 0.4 per cent** as the lower costs of private transport and education offset higher food prices.



Check out the interactive dashboard on **"Consumer Price Index by Household Group"** to explore the trends by household group.