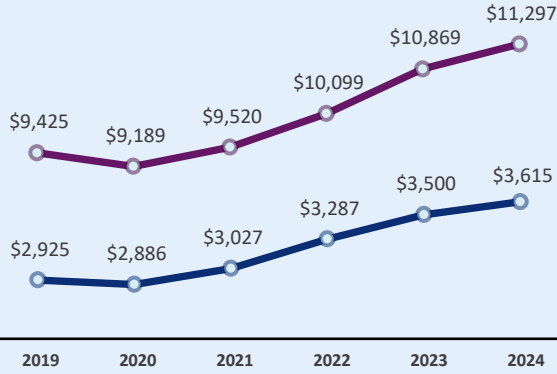


# KEY HOUSEHOLD INCOME TRENDS 2024

## Median Household Employment Income Among Resident Employed Households Grew in 2024



### Change Over the Years After Adjusting for Inflation

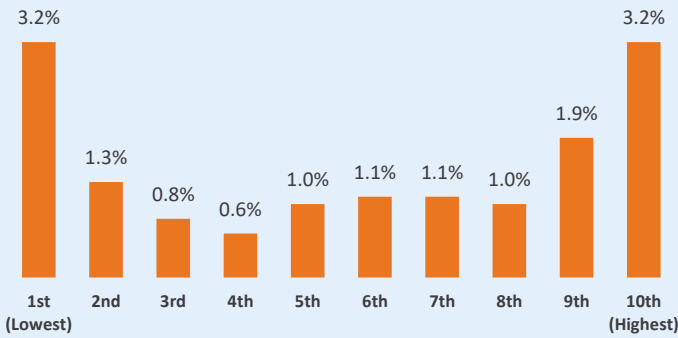
- Per Household**
  - ↑ 1.4% in 2024
  - ↑ 3.6% (0.7% p.a.) from 2019 to 2024
- Per Household Member**
  - ↑ 0.8% in 2024
  - ↑ 6.8% (1.3% p.a.) from 2019 to 2024



Note: The dollar values in the chart are not adjusted for inflation.

## Households Across All Income Deciles Saw Increases in Average Household Employment Income Per Household Member in 2024

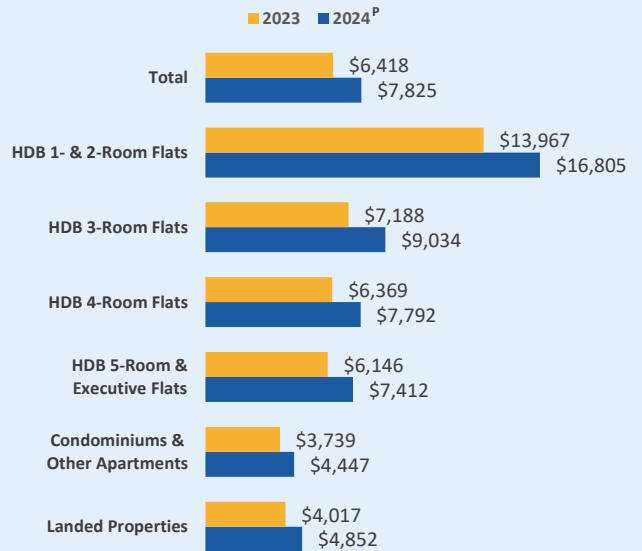
### Change in 2024 After Adjusting for Inflation



It is notable that some resident employed households in the lowest 10% owned a car (14.1%), employed a domestic worker (16.8%), lived in private property (8.5%) or were with household reference persons aged 65 years and over (37.3%) in 2024. Not all households are consistently in the same decile group from one year to the next.

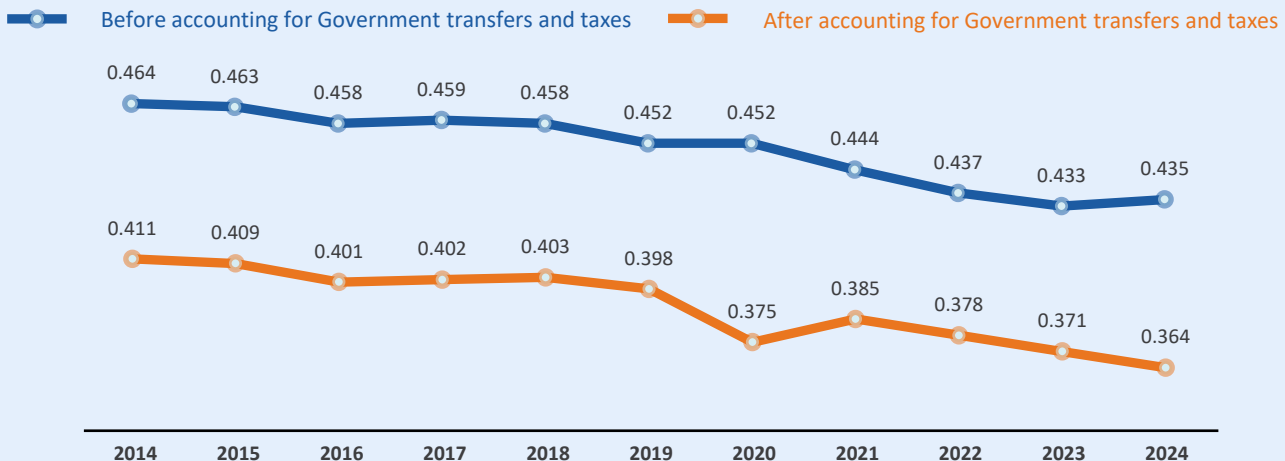
## Households Received More Government Transfers in 2024

### Average Annual Transfers Per Household Member



Households refer to resident households.  
<sup>P</sup>: Government transfers for 2024 are preliminary.

## Household Income Inequality (Gini Coefficient) Fell to Its Lowest Since 2000 After Accounting for Government Transfers and Taxes, Reflecting the Larger Redistributive Effect in 2024



Scan to watch a video on Understanding The Gini Coefficient.



Scan to explore a dashboard on household income.